



# EMERGENCY RESPONSE DEPLOYABLE SOLUTIONS GUIDE

- > FIBER OPTIC DEPLOYMENT & FIXED INSTALLATION CABLES
- > DEPLOYABLE ASSEMBLIES & REELS
- > HARSH ENVIRONMENT CONNECTORS
- > DEPLOYMENT CAPABILITIES
- > ANCILLARY PRODUCTS

# DEPLOYABLE & FIXED INSTALLATION CABLES

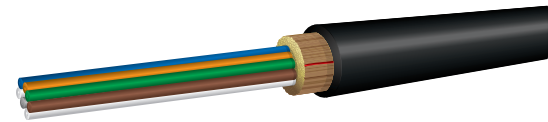
## OCC DEPLOYABLE CABLES

OCC deployable fiber optic cables were designed for use in the harshest environments where deployment and retrieval for re-use are required. With OCC, you'll be deploying the most rugged and advanced network infrastructure ensuring reliable transmission even under the most difficult conditions.

### D-SERIES DISTRIBUTION MIL-TAC CABLES:

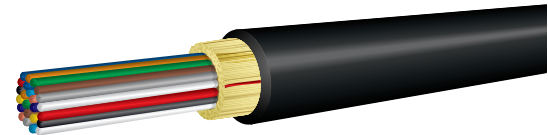
Heavy-duty, fiber optic ground-tactical cable that is ideal for use in harsh environments.

FIBER COUNT	OS2 SINGLE-MODE	OM1	OM3	OM4
2	D-002CSLS5KM	D-002CWST5KM	D-002CALT5KM	D-002CALE5KM
4	D-004CSLS5KM	D-004CWST5KM	D-004CALT5KM	D-004CALE5KM
6	D-006CSLS5KM	D-006CWST5KM	D-006CALT5KM	D-006CALE5KM
12	D-012CSLS5KM	D-012CWST5KM	D-012CALT5KM	D-012CALE5KM
24	D-024CSLS5KM	D-024CWST5KM	D-024CALT5KM	D-024CALE5KM



### DX-SERIES DISTRIBUTION – FIELD BROADCAST CABLES:

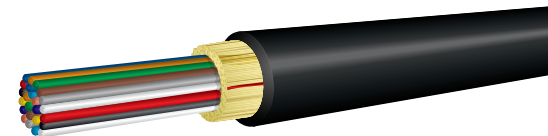
FIBER COUNT	OS2 SINGLE-MODE	OM1	OM3	OM4
6	DX006CSLA9KB	DX006CWLS9KB	DX006CALT9KB	DX006CALE9KB
12	DX012CSLA9KB	DX012CWLS9KB	DX012CALT9KB	DX012CALE9KB
24	DX024CSLA9KB	DX024CWLS9KB	DX024CALT9KB	DX024CALE9KB



### DX-SERIES DISTRIBUTION – RISER RATED CABLES:

DX-Series Riser: Designed with Indoor/Outdoor enhanced mechanical and environmental performance.

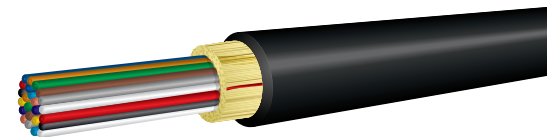
FIBER COUNT	OS2 SINGLE-MODE	OM1	OM3	OM4
2	DX002DSLX9KR	DX002DWLS9KR	DX002DALX9QR	DX002DALE9QR
6	DX006DSLX9KR	DX006DWLS9KR	DX006DALX9QR	DX006DALE9QR
12	DX012DSLX9KR	DX012DWLS9KR	DX012DALX9QR	DX012DALE9QR
24	DX024DSLX9KR	DX024DWLS9KR	DX024DALX9QR	DX024DALE9QR



### DZ-SERIES DISTRIBUTION – PLENUM RATED CABLES:

DZ-Series Indoor/Outdoor Plenum: Manufactured with Indoor/Outdoor low grade smoke PVC for plenum applications.

FIBER COUNT	OS2 SINGLE-MODE	OM1	OM3	OM4
4	DZ004TSLX9YP	DZ004TWLS9OP	DZ004TALT9QP	DZ004TALE9QP
6	DZ006TSLX9YP	DZ006TWLS9OP	DZ006TALT9QP	DZ006TALE9QP
12	DZ012TSLX9YP	DZ012TWLS9OP	DZ012TALT9QP	DZ012TALE9QP
24	DZ024TSLX9YP	DZ024TWLS9OP	DZ024TALT9QP	DZ024TALE9QP

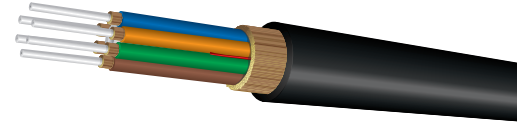


\* Other fiber counts and jacket types, including Interlocking Armored, available upon request. Contact OCC Inside Sales for ordering details.

## B-SERIES BREAKOUT MIL-TAC CABLES

Extremely strong, lightweight, and rugged tight-buffered cables designed for military tactical field use applications.

FIBER COUNT	OS2 SINGLE-MODE	OM1	OM3	OM4
2	B-002CSLS5KM	B-002CWST5KM	B-002CALT5KM	B-002CALE5KM
4	B-004CSLS5KM	B-004CWST5KM	B-004CALT5KM	B-004CALE5KM
6	B-006CSLS5KM	B-006CWST5KM	B-006CALT5KM	B-006CALE5KM
12	B-012CSLS5KM	B-012CWST5KM	B-012CALT5KM	B-012CALE5KM
24	B-024CSLS5KM	B-024CWST5KM	B-024CALT5KM	B-024CALE5KM



## HC-SERIES HIGH-DENSITY FIELD DEPLOYABLE CABLES

OCC's high-capacity cables bundle sub-groups of 12- 250µm fibers into compact, flexible cables of up to 48 total fibers. Features OCC's exclusive tight-buffered fiber unit for best crush and kink resistance with no hollow tubes, no rigid central rod, and with no preferential bend axis. Tactical Polyurethane (C); Flame-Retardant Tactical (V); and Low-Smoke Zero-Halogen (G) outer jacket materials are available.

OCC PART #
CALL OCC SALES FOR MORE INFORMATION



## FIXED INSTALLATION CABLES

OCC offers Aluminum Interlocking Armored (ILA) cables which are ideal for fixed or temporary installations that do not require conduit. Available in 2-24 fiber options these cables can be installed outside and in plenum or riser pathways inside, eliminating the need to transition cable types between environments. Not intended for areas where foot traffic is a consideration.

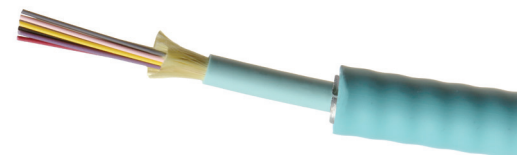
### DZ-SERIES ALUMINUM INTERLOCKING ARMORED (ILA) - PLENUM RATED CABLES:

FIBER COUNT	OS2 SINGLE-MODE	OM1	OM3	OM4
6	DZ006TSLX9YPI8	DZ006TWLS90PI8	DZ006TALT9QPI8	DZ006TALE9QPI8
12	DZ012TSLX9YPI8	DZ012TWLS90PI8	DZ012TALT9QPI8	DZ012TALE9QPI8
24	DZ024TSLX9YPI8	DZ024TWLS90PI8	DZ024TALT9QPI8	DZ024TALE9QPI8



### DX-SERIES ALUMINUM INTERLOCKING ARMORED (ILA) - RISER RATED CABLES:

FIBER COUNT	OS2 SINGLE-MODE	OM1	OM3	OM4
6	DX006DSLX9YRI2	DX006DWLS90RI2	DX006DALD9QRI2	DX006DALE9QRI2
12	DX012DSLX9YRI2	DX012DWLS90RI2	DX012DALD9QRI2	DX012DALE9QRI2
24	DX024DSLX9YRI2	DX024DWLS90RI2	DX024DALD9QRI2	DX024DALE9QRI2



\* Other fiber counts and jacket types, including Interlocking Armored, available upon request. Contact OCC Inside Sales for ordering details.

# DEPLOYABLE REELS & ASSEMBLIES

## FIBER ASSEMBLIES

OCC offers standard and made-to-order tactical assemblies. Harsh environment connectivity options include COTS-M83526, EZ-MATE, Expanded Beam, MHC®-T2, MHC®-T3, Pierside, and L-Jack™ connectors. OCC can assist in designing your end-to-end assembly solution and we also offer swift Repair & Restoration services.

### DEPLOYABLE CABLE ASSEMBLIES WITH DISCRETE CONNECTORS

DESCRIPTION	OCC PART #
LC, SC, ST, FC, MTP-MPO & CUSTOM CONFIGURATIONS	CALL OCC SALES FOR MORE INFORMATION



### DEPLOYABLE IP68 RATED LC ASSEMBLIES & RECEPTACLES

DESCRIPTION	OCC PART #
L-JACK™, 2CH IP68 BLACK ANODIZE LC PLUG/LC PLUG, MARS™ REEL (MM-LC/UPC, SM-LC/APC)	CALL OCC SALES FOR MORE INFORMATION



### HERMAPHRODITIC PLUG & RECEPTACLE CABLE ASSEMBLIES

DESCRIPTION	OCC PART #
CUSTOM CABLES ASSEMBLIES FOR ALL APPLICATIONS USING COTS 83526 (TFOCA-II®), EZ-MATE, MHC®-T2, MHC®-T3, EXPANDED BEAM & MULTIPLE OTHER CONNECTORS. CHANNEL COUNTS RANGE FROM 2-48 CH DEPENDING ON CONNECTOR CHOICE	CALL OCC SALES FOR MORE INFORMATION
RECEPTACLE ASSEMBLIES AVAILABLE TO MATE WITH ABOVE PLUG ASSEMBLIES	CALL OCC SALES FOR MORE INFORMATION



TFOCA-II® is a trademark from Amphenol Fiber Systems International



## HARSH ENVIRONMENT IP68 RATED LC CONNECTORS

### L-JACK™ CONNECTORS

OCC's L-Jack is a robust IP68 rated fiber optic connector that utilizes the small form factor of traditional LCs with the known ruggedness of OCC harsh environment connectors.





## HARSH ENVIRONMENT HERMAPHRODITIC CONNECTORS

These hermaphroditic (genderless) fiber optic connectors offer a wide variety of connectivity solutions suitable for harsh environments. Available from 2-48 channel configurations and multiple plating options. Compatible in all OCC assemblies.



### COTS M83526 (TFOCA-II®) CONNECTORS (UP TO 12 CH)

This tactical fiber optic connector is the standard connector for the US DoD and can be used in any deployable application. Available in either 4- or 12-channel shell size configurations.



### EZ-MATE CONNECTORS (UP TO 24CH)

The OCC EZ-MATE family of connectors provides a comprehensive solution for quick mating in a tactical footprint. Available in 4-, 6-, 12- or 24-channel configurations.



### PIERSIDE CONNECTORS (UP TO 12 CH)

Designed to meet the stringent Pierside performance specifications (NAVSEA drawings 7379171 and 7379172). It provides a genderless mating system perfect for applications requiring single-mode, multimode, or composite configurations in extreme environments. Constructed with hard anodized plating with PTFE for corrosion resistance.



### MHC®-T2 CONNECTOR (UP TO 8 CH)

OCC's MHC-T2 is the next generation in tactical single terminus connectors. Due to the small form factor, it allows for reduced weight and size while maintaining a rugged connection. Available in 2-, 4-, 6-, and 8-channels. Fiber/copper configurations available in 8 channel shell size.



### MHC®-T3 CONNECTOR (UP TO 48 CH)

OCC's patented MHC-T3 is the next generation in compact, high-density, fiber optic connectors. Utilizing MT ferrule technology, the MHC-T3 can deliver up to 48 single-mode or multimode fibers in an environmentally-protected, hermaphroditic connector with a smaller footprint than traditional cylindrical connectors.

## HARSH ENVIRONMENT ETHERNET CONNECTORS



### R-JACK® RUGGEDIZED IP68 RATED RJ-45 SOLUTION

The R-JACK Category 6 Ethernet Connector provides an efficient, comprehensive, and affordable solution for Ethernet connectivity in harsh and environmentally challenging applications. Unlike competitor RJ-45 receptacles, OCC's R-JACK Ethernet receptacles offer a 100% transversely sealed (IP-68) configuration option, preventing dust, water, or moisture penetration, with or without dust-cap or plug engagement. Compatible in OCC's Copper Solutions.

# DEPLOYMENT CAPABILITIES

## MODULAR ADVANCED REEL SYSTEM (MARS™)

OCC's Modular Advanced Reel System (MARS™), the industry's first lightweight cable deployment reel system, is designed specifically for the demanding needs of harsh environment fiber optic installations.

### MARS™ REEL

OCC's Modular Advanced Reel System (MARS) is a lightweight, modular system that is easily transported. It is ideal for applications where cable needs to be deployed, reeled in quickly, and stored efficiently. OCC MARS reels were tested and approved to the US Army CECOM specification A336463A and, have been named as the preferred reel for US Army applications.

DESCRIPTION	OCC PART #
ACR/ AFO 100 METER CAPACITY	CALL OCC SALES FOR MORE INFORMATION
ACR/ AFO 300 METER CAPACITY	CALL OCC SALES FOR MORE INFORMATION
ACR/ AFO 500 METER CAPACITY	CALL OCC SALES FOR MORE INFORMATION
ACR/ AFO 750 METER CAPACITY	CALL OCC SALES FOR MORE INFORMATION
ACR/ AFO 1000 METER CAPACITY	CALL OCC SALES FOR MORE INFORMATION
ACR/ AFO 1250 METER CAPACITY	CALL OCC SALES FOR MORE INFORMATION

All ACR & AFO reels are available to order with multiple color, integrated reel cleaning kit options, and axle types. Contact OCC Sales at 1-877-509-1500 for more information.



### MARS™ TRIPOD

OCC's Tripod Design allows for disassembly into three components for easy shipping and storage. Pin latches are tethered to base and lock into place. Axles are easily interchanged and available in 100M, 300M, and 500M sizes. The axle latch can easily be positioned to retain or remove the reel.

DESCRIPTION	OCC PART #
TRIPOD FOR 100M REEL WITHOUT BRAKE	ART-0100-X-X-Y
TRIPOD FOR 300M REEL WITHOUT BRAKE	ART-0300-X-X-Y
TRIPOD FOR 500M REEL WITHOUT BRAKE	ART-0500-X-X-Y
TRIPOD FOR 100M REEL WITH BRAKE	ATB-0100-X-X-Y
TRIPOD FOR 300M REEL WITH BRAKE	ATB-0300-X-X-Y
TRIPOD FOR 500M REEL WITH BRAKE	ATB-0500-X-X-Y

Replace "Y" with Color Code: B = Black, G = Green, T = Desert Tan

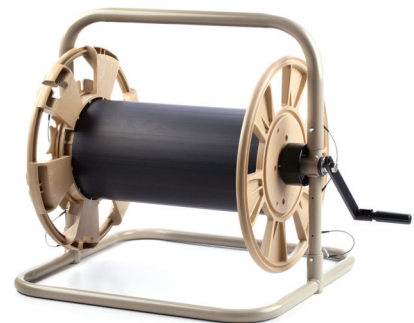


### MARS™ T-FRAME

OCC's T-Frame design contains all benefits of the MARS design. Integrated brake adjusts the drag applied to the reel, which prevents over-spin.

DESCRIPTION	OCC PART #
T-FRAME WITH BRAKE FOR 500M	ABF-0500-X-X-Y
T-FRAME WITH BRAKE FOR 750M	ABF-0750-X-X-Y
T-FRAME WITH BRAKE FOR 1000M	ABF-1000-X-X-Y
T-FRAME, WITHOUT BRAKE FOR 750M	ARA-0750-X-X-Y
T-FRAME, WITHOUT BRAKE FOR 1000M	ARA-1000-X-X-Y
T-FRAME, WITHOUT BRAKE FOR 1250M	ARA-1250-X-X-Y

Replace "Y" with Color Code: B = Black, G = Green, T = Desert Tan



## MARS™ ADVANCED LIGHTWEIGHT REEL STAND (ALRS)

OCC's ALRS series of lightweight reel stands represent a significant advancement in cable deployment and retrieval technology. The ALRS is a highly portable, folding A-frame stand used for paying out and retrieving cable (both copper and fiber optic) in a harsh environment. Designed for quick and easy deployment and operation, the ALRS requires no tools for set up. Additionally, when configured for transport, all pieces are maintained within the unit. Conforms to Army Performance Specification A3354296.



DESCRIPTION	OCC PART #
NSN 8130-01-630-1702	ALRS-2AMG2D1C, CARC GREEN
NSN 8130-01-630-1792	ALRS-2AMT2DIC, CARC TAN

## MARS™ TRANSIT CASE WITH ACQUISITION CRADLE

OCC's MARS Transit Case with Acquisition Cradle is a turn-key transit case with deployable cradle to secure reels. This built-in cradle enables fast deployment without additional set up.

DESCRIPTION	OCC PART #
TRANSIT CASE WITH CRADLE FOR 500M REEL	ACC-0500-X-X-Y
TRANSIT CASE WITH CRADLE FOR 750M REEL	ACC-0750-X-X-Y
TRANSIT CASE WITH CRADLE FOR 1000M REEL	ACC-1000-X-X-Y
TRANSIT CASE WITH CRADLE FOR 1250M REEL	ACC-1250-X-X-Y

Replace "Y" with Color Code: B = Black, G = Green, T = Desert Tan



## MODULAR THROWDOWN BOX

The Modular Throwdown Box provides a way to combine multiple, discrete connections into a multi-fiber trunk cable. Constructed of rugged polymer and designed with a latching lid to protect the optical connections when not in use. In general, each Throwdown Box will have harsh environment multi-fiber receptacle inputs and discrete fiber outputs mounted on OCC standard adapter plates. The Modular Throwdown Box can also be configured for input and output to enable daisy chaining, depending on the specific requirements of the user. Each Modular Throwdown Box is custom designed to meet end-user requirements. Pictured with the MHC®-T3 connector.



# ANCILLARY PRODUCTS

## FIBER OPTIC JUMPERS

### FIBER OPTIC DUPLEX JUMPERS MM 62.5/125 OM1

DESCRIPTION	OCC PART #
F.O. JUMPER, 62.5, ST-ST, 1M, ORANGE, DUPLEX	D6ST-ST-1M
F.O. JUMPER, 62.5, ST-ST, 2M, ORANGE, DUPLEX	D6ST-ST-2M
F.O. JUMPER, 62.5, SC-SC, 1M, ORANGE, DUPLEX	D6SC-SC-1M
F.O. JUMPER, 62.5, SC-SC, 2M, ORANGE, DUPLEX	D6SC-SC-2M
F.O. JUMPER, 62.5, LC-LC, 1M, ORANGE, DUPLEX	D6LC-LC-1M
F.O. JUMPER, 62.5, LC-LC, 2M, ORANGE, DUPLEX	D6LC-LC-2M

### FIBER OPTIC DUPLEX JUMPERS MM 50/125 OM2

DESCRIPTION	OCC PART #
F.O. JUMPER, 50µm, ST-ST, 1M, ORANGE, DUPLEX	D5ST-ST-1M
F.O. JUMPER, 50µm, ST-ST, 2M, ORANGE, DUPLEX	D5ST-ST-2M
F.O. JUMPER, 50µm, SC-SC, 1M, ORANGE, DUPLEX	D5SC-SC-1M
F.O. JUMPER, 50µm, SC-SC, 2M, ORANGE, DUPLEX	D5SC-SC-2M
F.O. JUMPER, 50µm, LC-LC, 1M, ORANGE, DUPLEX	D5LC-LC-1M
F.O. JUMPER, 50µm, LC-LC, 2M, ORANGE, DUPLEX	D5LC-LC-2M

### FIBER OPTIC DUPLEX JUMPERS MM 50/125 OM3

DESCRIPTION	OCC PART #
F.O. JUMPER, 50µm OM3, SC-SC, 1M, AQUA, DUPLEX	D5SC-SC-1MG
F.O. JUMPER, 50µm OM3, SC-SC, 2M, AQUA, DUPLEX	D5SC-SC-2MG
F.O. JUMPER, 50µm OM3, LC-LC, 1M, AQUA, DUPLEX	D5LC-LC-1MG
F.O. JUMPER, 50µm OM3, LC-LC, 2M, AQUA, DUPLEX	D5LC-LC-2MG

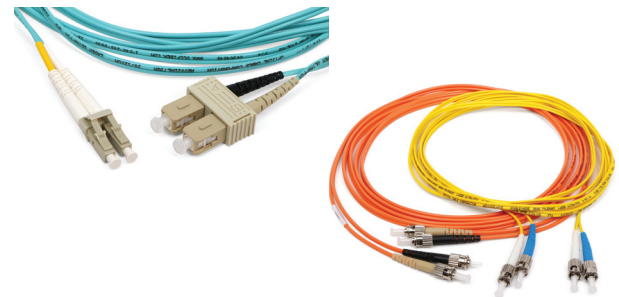
### FIBER OPTIC DUPLEX JUMPERS MM 50/125 OM4

DESCRIPTION	OCC PART #
F.O. JUMPER, 50µm OM4, SC-SC, 1M, AQUA, DUPLEX	D5SC-SC-1MQ
F.O. JUMPER, 50µm OM4, SC-SC, 2M, AQUA, DUPLEX	D5SC-SC-2MQ
F.O. JUMPER, 50µm OM4, LC-LC, 1M, AQUA, DUPLEX	D5LC-LC-1MQ
F.O. JUMPER, 50µm OM4, LC-LC, 2M, AQUA, DUPLEX	D5LC-LC-2MQ

### FIBER OPTIC DUPLEX JUMPERS SINGLE-MODE

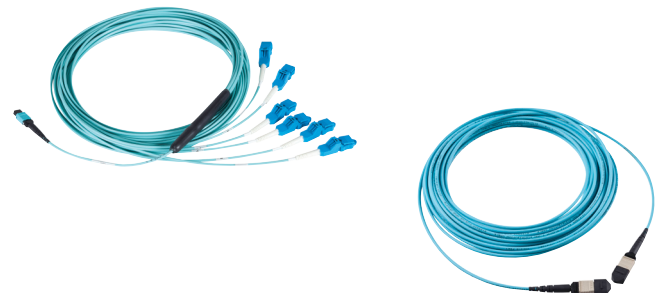
DESCRIPTION	OCC PART #
F.O. JUMPER, SM, ST-ST, 1M, YELLOW, DUPLEX	D8ST-ST-1M
F.O. JUMPER, SM, ST-ST, 2M, YELLOW, DUPLEX	D8ST-ST-2M
F.O. JUMPER, SM, SC-SC, 1M, YELLOW, DUPLEX	D8SC-SC-1M
F.O. JUMPER, SM, SC-SC, 2M, YELLOW, DUPLEX	D8SC-SC-2M
F.O. JUMPER, SM, LC-LC, 1M, YELLOW, DUPLEX	D8LC-LC-1M
F.O. JUMPER, SM, LC-LC, 2M, YELLOW, DUPLEX	D8LC-LC-2M

Multiple connectivity options available including LC, SC, ST, FC, and MTP/MPO. Contact OCC Sales at 800-622-7711 or visit [occfiber.com](http://occfiber.com).



## FIBER OPTIC MPO TRUNK CABLE ASSEMBLIES

DESCRIPTION	OCC PART #
MPO/MPO TRUNK CABLES	CALL OCC SALES FOR MORE INFORMATION
MPO FANOUT TO DISCRETE CONNECTOR TRUNK CABLES	CALL OCC SALES FOR MORE INFORMATION





## NEMA 3 & NEMA 4X ENCLOSURES

DESCRIPTION	OCC PART #
NEMA 3 ENCLOSURE, 6-PORT, HOLDS 1 ADAPTER PLATE	OC06N
NEMA 3 ENCLOSURE, 6-PORT, HOLDS 1 ADAPTER PLATE, 6-SPLICE SPLICE BLOCK	OC06NS
NEMA 3 ENCLOSURE, 12-PORT, HOLDS 1 ADAPTER PLATE	OC012N
NEMA 3 ENCLOSURE, 12-PORT, HOLDS 2 ADAPTER PLATES, 12-SPLICE SPLICE BLOCK	OC012NS



DESCRIPTION	OCC PART #
NEMA 4X ENCLOSURE, 12-PORT, HOLDS 2 ADAPTER PLATES	OC012NX
NEMA 4X ENCLOSURE, 12-PORT PATCH/SPLICE BLOCK	OC012NXSB
NEMA 4X ENCLOSURE, 12-FIBER SPLICE ONLY	OC012NXS
NEMA 4X ENCLOSURE, PATCH AND SPLICE, HOLDS 8 ADAPTER PLATES	OC048NX
NEMA 4X ENCLOSURE, PATCH AND SPLICE, INCLUDES 1-W48S KIT (2-24 FIBER SPLICE TRAYS, TRANSITION TRAYS, MOUNTING HARDWARE, CABLE MANAGEMENT, AND PORT IDENTIFICATION)	OC048NXS



## WALL MOUNT FIBER ENCLOSURES

DESCRIPTION	OCC PART #
WALL MOUNT CABINET, 12- OR 24-PORT, HOLDS UP TO 4 ADAPTER PLATES (2 BLANK PLATES INCLUDED FOR 12-PORT APPLICATIONS), 13"H X 12"W X 3.5"D	WTC12/24B
WALL MOUNT CABINET, 48-PORT, HOLDS UP TO 8 ADAPTER PLATES, 13"H X 17"W X 5.5"D	WTC48B
ZONE DISTRIBUTION ENCLOSURE, 6-PORT (EMPTY) 7"W X 6"H X 1.92"D	ZDMBC1AP
WALL MOUNT SPLICE KIT FOR WTC12/24X CABINET, 24-FIBER SPLICE TRAY	W24PT
WALL MOUNT SPLICE KIT FOR 48-FIBER SPLICES	W48S



## RACK MOUNT FIBER DISTRIBUTION ENCLOSURES

DESCRIPTION	OCC PART #
FIBER ENCLOSURE, RACK MOUNT, 1RU, 3 ADAPTER PLATES, BLACK	RTC1U-3APB
FIBER ENCLOSURE, RACK MOUNT, 2RU, 6 ADAPTER PLATES, BLACK	RTC2U-6APB
FIBER ENCLOSURE, RACK MOUNT, 4RU, 12 ADAPTER PLATES, BLACK	RTC4U-12APB
RACK MOUNT SPLICE TRAY KIT, (2) SPLICE TRAYS, FOR USE WITH RTC/RTS1U	RS1U2T
RACK MOUNT SPLICE TRAY KIT, (4) SPLICE TRAYS, FOR USE WITH RTC/RTS2U	RS2U4T



## DIN RAIL SYSTEM ENCLOSURES

DESCRIPTION	OCC PART #
ENCLOSURE, ACCOMMODATES 1 ADAPTER PLATE, CABLE ENTRY GROMMET, BLACK, EMPTY	DTC1AP
ENCLOSURE, ACCOMMODATES 2 ADAPTER PLATES, CABLE ENTRY GROMMET, BLACK, EMPTY	DTC2AP
ENCLOSURE, ACCOMMODATES 1 ADAPTER PLATE, LIQUID TIGHT CABLE GLAND, BLACK, EMPTY	DTC1APG
ENCLOSURE, ACCOMMODATES 2 ADAPTER PLATES, LIQUID TIGHT CABLE GLAND, BLACK, EMPTY	DTC2APG



# ANCILLARY PRODUCTS

## CATEGORY 6 & CATEGORY 6A COPPER SOLUTIONS

OCC's Category 6A solutions are fully backed by our 25-year performance warranty without the need to perform time consuming alien crosstalk testing. Our Category 6A cable fully supports 2.5/5GBASE-T Ethernet without the need for additional qualification testing. OCC's Category 6 cable supports running IEEE 802.3bz 2.5 and 5 gigabit per second applications when qualified per TIA TSB-5021.

### OCC-10G – CATEGORY 6A UNSHIELDED:

DESCRIPTION	OCC PART #
COPPER CABLE, CMP	OCC-U6A4PLM-xx
COPPER CABLE, CMR	OCC-U6A4R-xx
MODULAR JACK, KMJ	K6Axx
MODULAR JACK, UMJ	U6Axx
FIELD TERMINABLE PLUG, CATEGORY 6A	OCCUFP6A
PATCH PANEL, 24-PORT, 1U, FLAT	DCC2488/1106AN
PATCH PANEL, 48-PORT, 2U, FLAT	DCC4888/1106AN
PATCH PANEL, 24-PORT, 1U, ANGLED	ACC2488/1106AN
PATCH PANEL, 48-PORT, 2U, ANGLED	ACC4888/1106AN
PATCH CORD–WITH BOOTS	PC6AU-B-xyxy
PATCH CORDS–NO BOOTS	PC6AU-xyxy

### OCC-10GS – CATEGORY 6A SHIELDED:

DESCRIPTION	OCC PART #
COPPER CABLE, CMP	OCC-FTP6A4PLM-xx
COPPER CABLE, CMR	OCC-FTP6A4R-xx
MODULAR JACK, KMJ	K6AS
FIELD TERMINABLE PLUG	OCCSFP6A
PATCH PANEL, 24-PORT, 1U, FLAT	DCC2488/1106A-S
PATCH PANEL, 48-PORT, 2U, FLAT	DCC4888/1106A-S
PATCH PANEL, 24-PORT, 1U, ANGLED	ACC2488/1106A-S
PATCH PANEL, 48-PORT, 2U, ANGLED	ACC4888/1106A-S
PATCH CORD–WITH BOOTS	PC6AS-B-xyxy
PATCH CORDS–NO BOOTS	PC6AS-xyxy

## COPPER CABLES

OCC copper cables support all IEEE PoE standards for DC power delivery over 4-pair cabling when installed in accordance with TIA TSB-184-A guidelines.

\*xx=COLOR: 01=Yellow; 02=Black; 03=Red; 04=Green; 05=Blue; 06=Gray; 07=White; 08=Violet; 09=Orange



### OCC-5G – CATEGORY 6 SHIELDED:

DESCRIPTION	OCC PART #
COPPER CABLE, CMP, SHIELDED	OCC-FTP64PLM-xx
COPPER CABLE, CMR, SHIELDED	OCC-FTP64R-xx
MODULAR JACK, KMJ	KMJA602S
FIELD TERMINABLE PLUG, CATEGORY 6A	OCCSFP6A
PATCH PANEL, 24-PORT, 1U, FLAT	DCC2488/110SIX-S
PATCH PANEL, 48-PORT, 2U, FLAT	DCC4888/110SIX-S
PATCH CORD–WITH BOOTS	PCSIXSxxByy
PATCH CORDS–NO BOOTS	PCSIXSxyxy

### OCC-2.5GS – CATEGORY 6 UNSHIELDED:

DESCRIPTION	OCC PART #
COPPER CABLE, CMP, CATEGORY 6+	OCC-UE64PLM-xx
COPPER CABLE, CMR, CAT CATEGORY 6+	OCC-UE64R-xx
MODULAR JACK, KMJ	KMJA6xx
MODULAR JACK, UMJ	UMJA6xx
FIELD TERMINABLE PLUG, CATEGORY 6A	OCCUFP6A
PATCH PANEL, 24-PORT, 1U, FLAT	DCC2488/110SIX
PATCH PANEL, 48-PORT, 2U, FLAT	DCC4888/110SIX
PATCH PANEL, 24-PORT, 1U, ANGLED	ACC2488/110SIX
PATCH PANEL, 48-PORT, 2U, ANGLED	ACC4888/110SIX
PATCH CORD–WITH BOOTS	PCSIXxxByy
PATCH CORDS–NO BOOTS	PCSIXxyxy

## JACKS/FIELD TERMINABLE PLUGS

In addition to providing excellent link/channel performance, OCC KMJ and UMJ jacks meet TIA component electrical performance. Category 6A shielded and unshielded field terminable plugs are backward compatible and may also be used in Category 5e and Category 6 modular plug terminated links.



\*xx=COLOR: 00=Electrical Ivory; 01=Office White; 02=Black; 03=Red; 04=Green; 05=Blue; 06=Gray; 07=White; 08=Orange; 09=Yellow; 10=Purple; 11=Brown; 12=Bright White

## KMJ FACEPLATES

OCC's Keystone Faceplates are available in multiple port configurations and accommodate all OCC KMJ jacks and inserts for maximum versatility in the work area.



SINGLE/DOUBLE GANG	PORTS	ID WINDOWS	FLAT/ ANGLED	OCC PART #
SINGLE GANG	1	ID WINDOWS	FLAT	FPSK01xx
SINGLE GANG	2	ID WINDOWS	FLAT	FPSK02xx
SINGLE GANG	3	ID WINDOWS	FLAT	FPSK03xx
SINGLE GANG	4	ID WINDOWS	FLAT	FPSK04xx
SINGLE GANG	6	ID WINDOWS	FLAT	FPSK06xx
DOUBLE GANG	6	ID WINDOWS	FLAT	DPSK06xx
DOUBLE GANG	12	ID WINDOWS	FLAT	DPSK12xx
SINGLE GANG	1	NO WINDOWS	FLAT	FPKS01xx
SINGLE GANG	2	NO WINDOWS	FLAT	FPKS02xx
SINGLE GANG	3	NO WINDOWS	FLAT	FPKS03xx
SINGLE GANG	4	NO WINDOWS	FLAT	FPKS04xx
SINGLE GANG	6	NO WINDOWS	FLAT	FPKS06xx
SINGLE GANG OVERSIZE	1	NO WINDOWS	FLAT	FPK01xx
SINGLE GANG OVERSIZE	2	NO WINDOWS	FLAT	FPK02xx
SINGLE GANG OVERSIZE	3	NO WINDOWS	FLAT	FPK03xx
SINGLE GANG OVERSIZE	4	NO WINDOWS	FLAT	FPK04xx
SINGLE GANG OVERSIZE	6	NO WINDOWS	FLAT	FPK06xx
DOUBLE GANG	6	NO WINDOWS	FLAT	DPK06xx
DOUBLE GANG	12	NO WINDOWS	FLAT	DPK12xx

## PATCH PANELS

OCC patch panels are available in both flat and angled styles. Category 6A patch panels utilize discrete high performance modular jacks.



## PATCH CORDS

OCC's copper patch cords are 100% factory tested and a guaranteed headroom warranty is available for OCC channel solutions that utilize OCC patch cords.



\*xx=LENGTH; yy=COLOR: 01=Yellow; 02=Black; 03=Red; 04=Green; 05=Blue; 06=Gray; 07=White; 08=Orange; 09=Brown; 10=Purple

## SURFACE MOUNT ENCLOSURES

OCC's Surface Mount Enclosures are a low-profile workstation solution that offers flexibility for multiple network configurations. A cost effective approach for multiple desktop applications including cubicle settings and numerous workstation complexes.

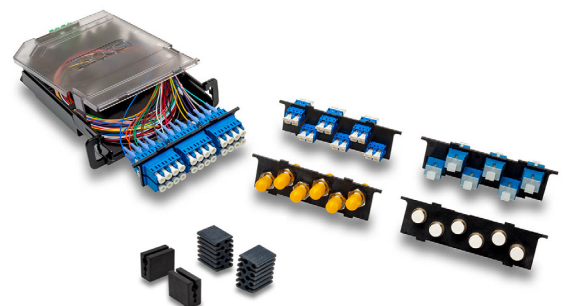


DESCRIPTION	KMJ/ UMJ	PORTS	OCC PART #
SURFACE MOUNT ENCLOSURE	KMJ	1	SMEK1xx
SURFACE MOUNT ENCLOSURE	KMJ	2	SMEK2xx
SURFACE MOUNT ENCLOSURE	KMJ	4	SMEK4xx
SURFACE MOUNT ENCLOSURE	KMJ	6	SMEK6xx
SURFACE MOUNT ENCLOSURE	UMJ	2	SME2xx
SURFACE MOUNT ENCLOSURE	UMJ	4	SME4xx
SURFACE MOUNT ENCLOSURE	UMJ	8	SME8xx
SURFACE MOUNT ENCLOSURE	UMJ	10	SME10xx
FIBER SERVICE OUTLET BOX	KMJ	2	SMEK2FS012

## FIBER SPLICE CASSETTES

Each pre-terminated splice cassette includes splice holder(s), cable retention holder(s), 40mm splice shrink sleeves, fiber pigtails, and a populated adapter plate. Terminates up to 24-fibers.

DESCRIPTION	OCC PART #
6-FIBER SPLICE CASSETTE, BASE & COVER, SIMPLEX BEIGE SCX6, 62.5, SPLICE & CABLE HOLDER, WITH PIGTAILS	FSCS16SSCP
12-FIBER SPLICE CASSETTE, BASE & COVER, DUPLEX BEIGE DSCX6, 62.5, SPLICE & CABLE HOLDER, WITH PIGTAILS	FSCS112DSCP
12-FIBER SPLICE CASSETTE, BASE & COVER, DUPLEX BEIGE DLCX6, 62.5, SPLICE & CABLE HOLDER, WITH PIGTAILS	FSCS112DLCP
24-FIBER SPLICE CASSETTE, BASE & COVER, QUAD BEIGE QLCX6, 62.5, SPLICE & CABLE HOLDER, WITH PIGTAILS	FSCS124QLRP





## LOCATIONS



## REPAIR & RESTORATION



In the fast-paced emergency response deployable industry, products need to be durable and reliable. But the reality is that breaks happen, and they need to be fixed quickly.

At OCC, we not only offer reliable products, but also Repair and Restoration Services for most connectivity and cable products on the market. OCC's Repair and Restoration Services provide value to our customers, whether it's through our diverse product family or helping to extend the life of our competitors' products. OCC also offers ongoing maintenance and testing of your cable assemblies.

Please contact an OCC Representative at 1-800-622-7711 for a quote and lead-time estimation.

### LEAD TIME

- » **24-Hour** Turnaround On Quotes
- » **1-to-3 Days** to Repair, If Necessary Materials Are On-Site
- » **3-to-5 Days** to Repair, Once Materials Not On-Site Are Received

#### **OCC ROANOKE, VA**

*Corporate Headquarters and Fiber Optic Cable Manufacturing Facility*  
5290 Concourse Drive  
Roanoke, VA 24019 USA  
540.265.0690 or 800.622.7711

#### **OCC DALLAS, TX**

*Harsh Environment and Specialty Connectivity Manufacturing Facility*  
1700 Capital Avenue, Suite 150  
Plano, TX 75074 USA  
972.509.1500 or 877.509.1500

#### **OCC ASHEVILLE, NC**

*Enterprise Connectivity Manufacturing Facility*  
33 Superior Way  
Swannanoa, NC 28778 USA  
828.298.2260 or 800.880.7674

#### **FIND US AT**

LinkedIn  
Facebook  
Twitter  
Instagram  
info@occfiber.com