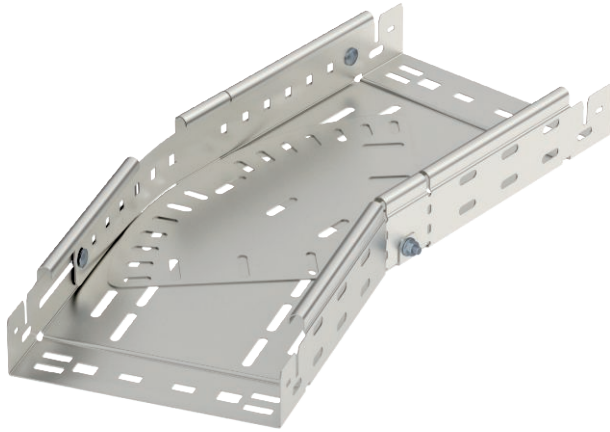


Technical data sheet

Magic 60 bend, variable

Item no. 6040530



Magic bend 0°–90°, variable, with quick connector system. For all cable tray types of 60 mm side height.

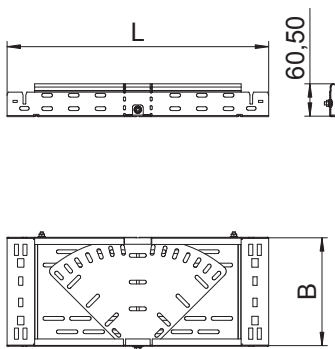


VA	Stainless steel, rustproof 1.4301
2B	Bright, reworked

Master data

Item no.	6040530
Type	RBMV 650 A2
Description 1	Variable bend
Description 2	with quick connector
Dimension	60x500
Material	Stainless steel, material no. 1.4301
Material symbol	A2
Surface	Bright, reworked
Surface symbol	2B
Smallest sales unit (VG)	1 Piece
Weight	986,00 kg/100 pc.

Technical data



Width	500,00 mm
Side height	60,00 mm
Dimension B	500,00 mm
Dimension L	960,00 mm
Bend (angle)	Adjustable
Connector version	Integrated connector
Plate thickness	1,50 mm
Suitable for maintaining electrical function	<input type="checkbox"/>
Mounting perforation in base	<input checked="" type="checkbox"/>
NATO hole pattern	<input type="checkbox"/>
Change of direction	Horizontal
Rustproof steel, pickled	<input type="checkbox"/>
Side perforation	<input checked="" type="checkbox"/>
Wide-span version	<input type="checkbox"/>