



[→ See All Eaton ePDU G3 Managed Documentation](#)

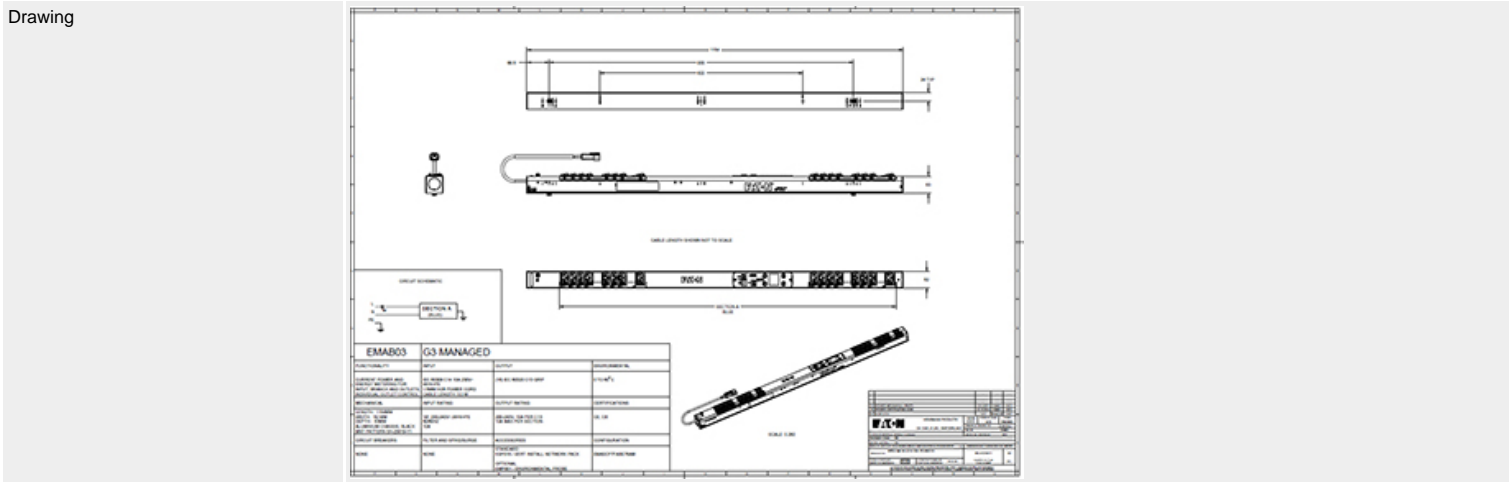
[→ See all Eaton ePDU G3 Managed models](#)

EMAB03

EPDU MA 0U (C14 10A 1P) 16x13

General

Function MA



| | |
|--------------|------------------------|
| Style Number | EMAB03 |
| Part Number | EMAB03 |
| Availability | Usually in stock |
| U Height | 26 |
| MIB | available for download |

Physical


| | |
|----------------------------|--|
| Dimensions (H x W x D, mm) | 52x53x1154 |
| Mounting Style | Button mounting on rear and sides, variable mounting bracket |

Input

| | |
|------------------|-----------------|
| Max kW | 2 |
| Plug | (1) IEC-320-C14 |
| Cable Length (m) | 3 |
| Voltage | 230V |
| Current | 10 |
| Phase | Single-phase |
| Frequency | 50Hz |



Output

| | |
|----------------------|---|
| Grip cable retention | Yes |
| Outlets | (16) IEC-320-C13  |
| Outlet Control | No |

Protection & Filtering

| | |
|-------------------------|------|
| Spike/Surge Suppression | None |
| EMI/RFI Filter | None |

Control & Interface

| | |
|---|--|
| Daisy Chain | 8 ePDUs |
| Operating Temperature | 60 Degrees C |
| Hot Swap Network and Control | Yes |
| Communication and Protocols | HTTP, HTTPS, SSL, Telnet, FTP, SNMP, SMTP, DNS, DHCP, LDAP, RADIUS |
| Optional Temperature and Humidity probe | EMP001 |
| Serial Interface | Yes |
| Environmental Interface | Yes |
| Ethernet Interface | Yes |
| Voltage Monitoring | Yes |

Metering and Switching

| | |
|-----------------------------------|--|
| Metering | Outlet and Equipment Monitoring across A and B feed |
| Metering Characteristics | V, W, A and kWhr, Active power, Apparent Power, Peak Power |
| Metering Accuracy | IEC Class 1 Billing grade Accuracy |
| Level 3 PUE measurements | Yes |
| Circuit breaker status monitoring | Yes |
| Switching | Outlet and Equipment Switching across A and B feed |

Environmental & Approval Standards

| | |
|-------------------------------|--|
| Approvals | CB, CE, EN 60950-1:2006/A11:2009/A1:2010/A12:2011 Safety - Part 1: General Requirements, IEC 60950-1(ed.2), IEC 60950-1(ed.2);am1 EN 55022:2010 Radio Disturbance characteristics - Limits and methods of measurement. EN 55024:2010 Immunity characteristics - Limits and methods of measurement. |
| Electromagnetic compatibility | EN 61000-6-2:2005 Part 6-2: Generic standards - Immunity for industrial environments EN 61000-6-4:2007+A1:2011 Part 6-4: Generic standards - Emission standard for industrial environments |
| Environmental | RoHS Directive – 2011/65/EU, EN 50581 : 2012, REACH Regulation (CE No. 1907/2006), WEEE directive 2012/19/EU, PEP ecopassport (Basic ePDUs) Packaging: 100% recycled, 100% recyclable: no plastic, no metal, no foam. |
| Manufacturing Plant | ISO 9001:2008 / ISO 14001:2004 |

Warranty

| | |
|-------------------|---------|
| Standard warranty | 2 years |
|-------------------|---------|

