

UNITED STATES
NUCLEAR REGULATORY COMMISSION
OFFICE OF NUCLEAR REACTOR REGULATION
WASHINGTON, D.C. 20555

June 25, 1991

NRC INFORMATION NOTICE NO. 88-63, SUPPLEMENT 2: HIGH RADIATION HAZARDS FROM
IRRADIATED INCORE DETECTORS
AND CABLES

Addressees:

All holders of operating licenses or construction permits for nuclear power reactors, research reactors, and test reactors.

Purpose:

The U.S. Nuclear Regulatory Commission (NRC) issued Information Notice (IN) 88-63 on August 15, 1988, and IN 88-63, Supplement 1, on October 5, 1990, to alert addressees to uncontrolled radiation exposures experienced at the Surry Power Station, Unit 2, the Duane Arnold Energy Center, and the Brunswick Steam Electric Plant, Unit 1. These exposures resulted from irradiated incore detectors and drive cables that were not adequately evaluated. This supplement alerts addressees to a similar recent event in which a substantial potential for an overexposure occurred. It is expected that recipients will review the information for applicability to their facilities and consider actions, as appropriate, to avoid similar problems. However, suggestions contained in this information notice do not constitute NRC requirements; therefore, no specific action or written response is required.

Description of Circumstances:

On February 11, 1991, at the Edwin I. Hatch Nuclear Plant, Unit 1, a contract vendor operated the controls of the traversing incore probe (TIP) system without the knowledge of control room personnel and in violation of plant procedures.

While troubleshooting a problem with the process computer (PC), the reactor engineer (RE), the shift technical advisor (STA), and a contract vendor were performing TIP traces to reproduce previously observed computer problems. When these attempts failed to evoke the prescribed PC response, they temporarily halted work. They agreed that they would continue troubleshooting after lunch and verified that the TIPs were in their indexers before leaving.

Shortly thereafter, in preparing to perform a radiation contamination survey, the health physics (HP) supervisor called the control room to obtain permission for an HP technician to enter the Unit 1 TIP room. The HP supervisor asked if

9106190342

Updated on 8/13/91

PDR IFE Notice 88-063 910625

the TIPS were being moved. The Unit 1 reactor operator informed the HP supervisor that the STA had gone to lunch and that no one would be operating the TIPS.

In preparing to enter the Unit 1 TIP room, the HP technician observed a reading of 1 R/hr at the exterior of the wire mesh door leading into the TIP room (Attachment 1). The HP technician telephoned the HP supervisor to inquire about the reason for the high radiation levels. The HP supervisor then called the Unit 1 control room operator.

While the HP supervisor was on the telephone with the reactor operator, the STA arrived at the Unit 1 control room. The operator asked the STA if anyone was operating the TIPS. The STA replied that, to his knowledge, no one was operating the TIPS. The STA then asked the same question of the RE, who said that he was not operating the TIPS, but was unaware of the contract vendor's actions. The STA immediately proceeded to the TIP operating panels in back of the main control boards. When the STA arrived, he found that the contract vendor had withdrawn one TIP into the shield from the indexer and was operating another in an attempt to resolve the PC problem. The STA told the contract vendor to "hold on" and verified that HP personnel were out of the TIP room area. The STA then returned the TIPS to the indexer in the drywell. The contract vendor failed to realize that he was violating station procedures and could have overexposed personnel. As part of the licensee's evaluation of this event, the Health Physics Department processed the HP technician's thermoluminescent dosimeter and recorded a reading of 5 mrem.

The licensee and NRC regional personnel subsequently reviewed the event and identified several key factors that contributed to the incident.

1. Unauthorized operation of the TIP system by the contract vendor.

An unauthorized person operated the TIP system without the knowledge of the control room operators. Because the PC troubleshooting activities had taken several days, the contract vendor had become less sensitive to the requirements for operating the equipment. Therefore, on the day of the incident, he operated the equipment without authorization and without the knowledge of control room personnel.

2. Poor adherence to procedural communication requirements between the operators of the TIP system and the Health Physics Department.

The procedure used to troubleshoot the problem with the PC is the same procedure used to perform the monthly surveillance required by Technical Specifications. The procedure warns that extremely high radiation levels will exist in the TIP room when the TIP probes and cables emerge from the shields or during the traverse. The procedure requires that the HP Department be notified when this procedure is performed. The NRC reviewed both the STA and the HP desk logs for the 2 months before the event and found that, of the 14 times the STA log documented TIP operation, the HP Department was notified of only 4 of these operations. The HP log also listed 6 additional TIP operations that were not reflected in the STA log.

3. Lack of procedural control of the TIP system and of understanding who is authorized to operate the TIP system.

Because the control panel for the TIP system is located behind the main control boards, the TIP system can be operated without the knowledge of control room personnel. The control room operators believed that the procedure required the STA to be physically present for the TIPs to be operated. In fact, the procedure also allows the RE to move the TIPs. Shift personnel authorized HP technicians to enter the TIP room because the STA had gone to lunch and they believed the STA had to be present before the TIP system could be operated.

To avoid repeating this event, the licensee initiated the following corrective actions:

1. Procedural controls have been added to the HP and Chemistry Department procedure, "High Radiation Area Access Control," requiring that a danger tag be affixed to the TIP control panel when personnel are to enter the TIP room. The HP technician obtains a sub-clearance on the tagout which prevents the tagout being released before personnel exit the TIP room.
2. A positive control "key exchange program" was instituted by which the HP technician obtains the TIP control panel key from the main control room with the shift supervisor's permission and exchanges the TIP control panel key for the TIP room door key controlled by the health physics supervisor. Similarly, the RE or STA must obtain the TIP room door key prior to operating the TIP controls.
3. The Engineering Support Department will transfer the TIP operating procedure to the Operations Department. This transfer should give the Operations Department more direct control over TIP movement.
4. The Operations Department will affix a warning placard to the TIP control panel requiring that the HP Department be notified before the TIP system is operated.
5. HP technicians will wear digital alarming dosimeters "chirpers" for entry into the TIP room and other very high radiation areas (greater than 1 R/hr at 18 inches).

The licensee is investigating the feasibility of erecting a shield at the front of the TIP room door to reduce exterior dose rates when the TIPs are activated. The licensee is considering placing a radiation monitoring device in the TIP room and other areas where very high radiation levels could exist which, at a predetermined dose rate, would activate an audible alarm and/or a flashing warning light.

Discussion:

The unauthorized movement of the TIPs by the contract vendor is a significant safety concern because it could have caused personnel to receive substantial

exposures in excess of the limits prescribed in Part 20 of Title 10 Code of Federal Regulations (10 CFR Part 20). Further, this action indicates that the licensee failed to control the manipulation of plant equipment from the control room. The root causes of this event were an inadequate procedure that did not provide clear controls of TIP-related activities and inadequate communication between the involved personnel. It is also evident that the contract vendor had not received adequate training and instruction on the procedural controls and restrictions that apply to the manipulation of the TIPs.

If the HP technician had arrived at the TIP room earlier, he may have entered the room and completed his initial radiation survey before the unauthorized TIP movement began. He would then have proceeded with his contamination survey inside the TIP room and, not being equipped with an alarming dosimeter, could have been unaware of the subsequent TIP operations and the higher dose rates.

HP technicians may realize the radiation hazard that exists in the TIP room while the TIPs are operated, but, in this high noise area, they may not hear or associate the noise of the TIP drive mechanism with TIP operation. Site HP technicians stated that a typical TIP room survey of this type would take between 10 and 15 minutes. With all of the TIPs present and activated, general area whole body radiation levels in the TIP room could range up to several hundred R/hr. Based on these radiation levels, a dose in excess of 10 CFR Part 20 whole body limits could have been received within a few minutes.

On April 15, 1991, the NRC issued a Notice of Violation and Proposed Civil Penalty in the amount of \$50,000 for the Hatch event. The NRC issued this violation to emphasize the importance of developing and implementing adequate procedures and of communicating precisely in order to ensure positive control over the operation of plant systems, specifically the TIP system.

This information notice requires no specific action or written response. If you have any questions about the information in this notice, please contact one of the technical contacts listed below or the appropriate NRR project manager.


Charles E. Rossi, Director
Division of Operational Events Assessment
Office of Nuclear Reactor Regulation

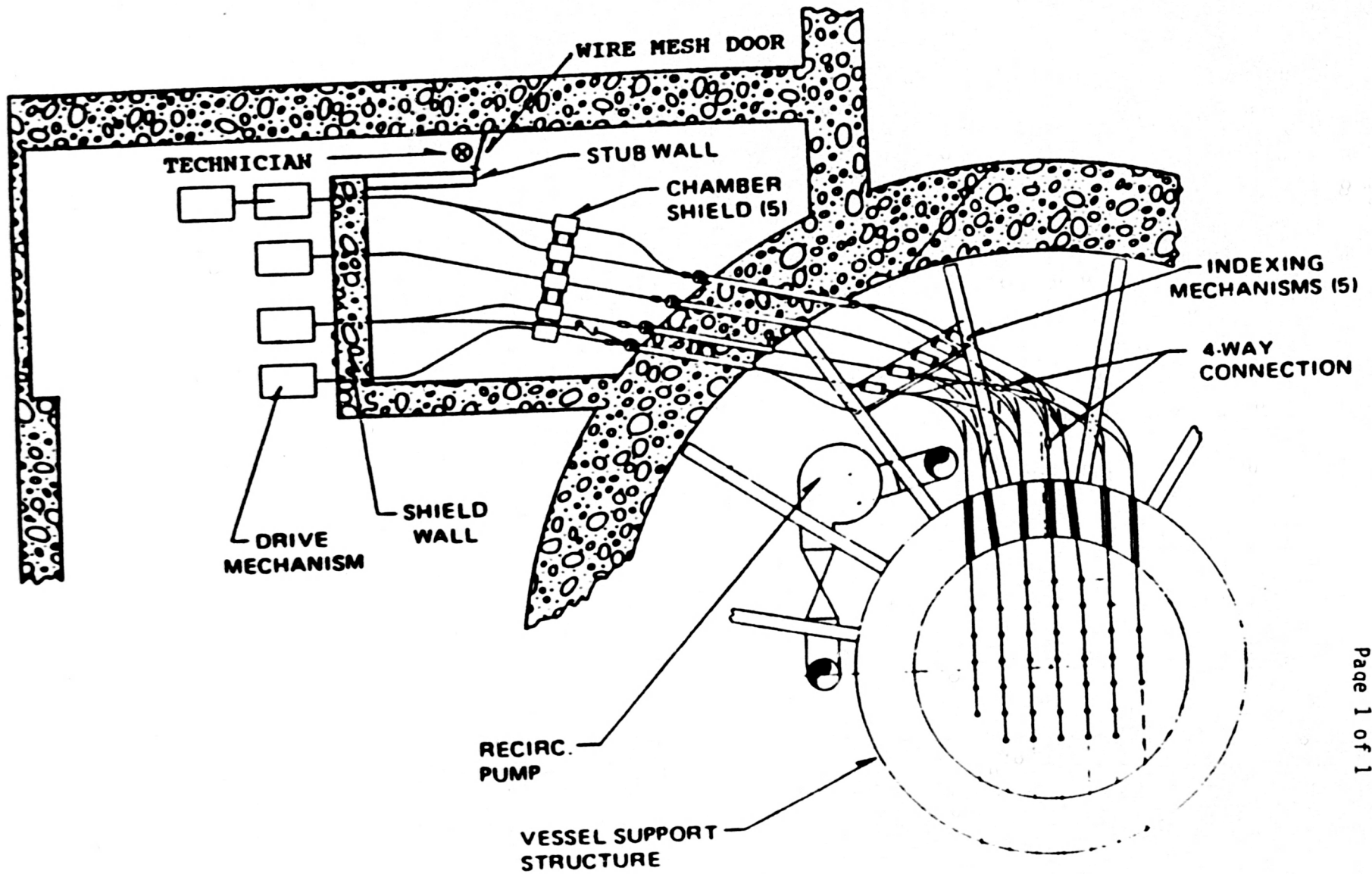
Technical Contacts: Daniel R. Carter, NRR
(301) 492-1848

Roger B. Shortridge, RII
(404) 841-4717

Attachments:

1. Figure 1, Typical Tip Room Layout
2. List of Recently Issued NRC Information Notices

TYPICAL TIP ROOM LAYOUT



LIST OF RECENTLY ISSUED
NRC INFORMATION NOTICES

Information Notice No.	Subject	Date of Issuance	Issued to
91-40	Contamination of Non-radioactive System and Resulting Possibility for Unmonitored, Uncontrolled Release to the Environment	06/19/91	All holders of OLs or CPs for nuclear power reactors.
91-39	Compliance with 10 CFR Part 21, "Reporting of Defects and Noncompliance"	06/17/91	All Nuclear Regulatory Commission (NRC) material licensees.
91-38	Thermal Stratification in Feedwater System Piping	06/13/91	All holders of OLs or CPs for nuclear power reactors.
91-37	Compressed Gas Cylinder Missile Hazards	06/10/91	All holders of OLs or CPs for nuclear power reactors.
91-36	Nuclear Plant Staff Working Hours	06/10/91	All holders of OLs or CPs for nuclear power reactors.
91-35	Labeling Requirements for Transporting Multi-Hazard Radioactive Materials	06/07/91	All U.S. Nuclear Regulatory Commission (NRC) licensees.
91-34	Potential Problems in Identifying Causes of Emergency Diesel Generator Malfunctions	06/03/91	All holders of OLs or CPs for nuclear power reactors.
91-33	Reactor Safety Information for States During Exercises and Emergencies	05/31/91	All holders of OLs or CPs for nuclear power reactors.
91-32	Possible Flaws in Certain Piping Systems Fabricated by Associated Piping and Engineering	05/15/91	All holders of OLs or CPs for nuclear power reactors.
91-31	Nonconforming Magnaflux Magnetic Particle (14AM) Prepared Bath	05/09/91	All holders of OLs or CPs for nuclear power reactors.

OL = Operating License
CP = Construction Permit

XXXXXXXXXXXXXXXXXXXXXXXXXXXXXXXXXXXX

XXXXXXXXXXXXXXXXXXXXXXXXXXXXXXXXXXXX

XXXXXXXXXXXXXXXXXXXXXXXXXXXX

GROUP # 01 TYPE LABELS - 3
NRC: CNT = 223 BULK = 231
1C01CY1FB11M11S11V11A11B11R1CV

SELECTION-10000000 SETS - 01
TOT: CNT = 1747 BULK = 2022

WO# N17192 WO D
DATE COMPLETED -

XXXXXXXXXXXXXXXXXXXXXXXXXXXXXXXXXXXX

XXXXXXXXXXXXXXXXXXXXXXXXXXXXXXXXXXXX

XXXXXXXXXXXXXXXXXXXXXXXXXXXX

GROUP # 01 TYPE LABELS - 3
NRC: CNT = 223 BULK = 231
1C01CY1FB11M11S11V11A11B11R1CV

SELECTION-10000000 SETS - 01
TOT: CNT = 1747 BULK = 2022

WO# N17192 WO D
DATE COMPLETED -

XXXXXXXXXXXXXXXXXXXXXXXXXXXXXXXXXXXX

XXXXXXXXXXXXXXXXXXXXXXXXXXXXXXXXXXXX

XXXXXXXXXXXXXXXXXXXXXXXXXXXX

GROUP # 01 TYPE LABELS - 3
NRC: CNT = 223 BULK = 231
1C01CY1FB11M11S11V11A11B11R1CV

SELECTION-10000000 SETS - 01
TOT: CNT = 1747 BULK = 2022

WO# N17192 WO D
DATE COMPLETED -

XXXXXXXXXXXXXXXXXXXXXXXXXXXXXXXXXXXX

XXXXXXXXXXXXXXXXXXXXXXXXXXXXXXXXXXXX

XXXXXXXXXXXXXXXXXXXXXXXXXXXX

GROUP # 01 TYPE LABELS - 3
NRC: CNT = 223 BULK = 231
1C01CY1FB11M11S11V11A11B11R1CV

SELECTION-10000000 SETS - 01
TOT: CNT = 1747 BULK = 2022

WO# N17192 WO D
DATE COMPLETED -

120036105333 1 1C01CY1FB11M1
ERNST & WHINNEY UTILITY GROUP
LIBRARIAN
1225 CONNECTICUT AVENUE N.W
WASHINGTON DC 20036

101863143832 1 1C01CY1FB11M1
DAVID J ALLARD
HEALTH PHYSICIST
225 WELLMAN AVENUE
N CHELMSFORD MA 01863

1SPAIN197532 1 1C01CY1FB11M1
JO SANCHEZ BAPTISTA
FRANCISCO ALDMAR
TRES TORRES,7
08017 BARCELONA SPAIN

111788139743 1 1C01CY1FB11M1
THOMAS E BOYLE
SUFFOLK COUNTY ATTORNEY
VETERANS MEMORIAL HIGHWAY
HAUPPAUGE NY 11788

147250030048 1 1C01CY1FB11M3
THOMAS M DATTILO
311 E MAIN STREET
MADISON IN 47250

192662143576 1 1C01CY1FB11M1
DENNIS D DAVIS
908 S BAY FRONT
BALBOA ISLAND CA 92662

192662143588 1 1C01CY1FB11M1
DENNIS DAVIS
908 SOUTH BAY FRONT
BALBOA ISLAND CA 92662

127701106539 1 1C01CY1FB11M1
WELLS FODLEMAN
811 YANCEY ST
DURHAM NC 27701

118042063132 1 1C01CY1FB11M1
CHARLES W ELLIOTT
325 N 10TH ST
EASTON PA 18042

140578064892 1 1C01CY1FB11M1
GEORGE E EVANS, JR.
SPECIAL ASST TO GOVERNOR
ENERGY CABINET - PO BOX 11888
LEXINGTON KY 40578

139205185270 1 1C01CY1FB11M1
MICHAEL GOFF
SPECIAL ASST-NATURAL RESOURCES
GOVERNOR'S OFFICE - PO BOX 139
JACKSON MS 39205

174136143103 1 1C01CY1FB11M1
DAVID S GOODEN
6161 SOUTH YALE AVE
TULSA OK 74136

122508143011 1 1C01CY1FB11M1
ALFRED W GRELLA
BOX 726-LAKE-OF-THE-WOODS
LOCUST GROVE VA 22508

122508143016 1 1C01CY1FB11M1
ALFRED W GRELLA
516 HARRISON CIRCLE - BOX 726
LOCUST GROVE VA 22508

155071142947 1 1C01CY1FB11M1
JAMES E HARD
5940 PIONEER RD
ST PAUL PARK MN 55071

144060066628 1 1C01CY1FB11M1
SUSAN L HIATT
UCRE REPRESENTATIVE
8275 MUNSON RD
MENTOR OH 44060

127562109510 1 1C01CY1FB11M1
C S HINNANT
PLANT GENERAL MANAGER
PO BOX 165 HARRIS NUC PLANT
NEW HILL NC 27562

103842139727 1 1C01CY1FB11M1
BEVERLY A HOLLINGWORTH
209 WINNUCUNNET RD
HAMPTON NH 03842

107012093831 1 1C01CY1FB11M1
H C JUNG
CONSULTANT
23 DIANNE CT
CLIFTON NJ 07012

119152109186 1 1C01CY1FB11M1
MARVIN LEWIS
7801 ROOSEVELT BLVD, #62
PHILADELPHIA PA 19152

1SPAIN107522 1 1C01CY1FB11M1
XAVIER LLAURO
GONZALEZ DE SOTO, 17
17600 FIGUERES SPAIN

115963139754 1 1C01CY1FB11M1
WILLIAM A LOCHSTET
RD 1, BOX 117, ASHTOLA DR
WINDBER PA 15963

143624139801 1 1C01CY1FB11M1
TERRY LODGE
618 N MICHIGAN ST
TOLEDO OH 43624

191745141225 1 1C01CY1FB11M1
DANIEL J LOVE
16300 E SORIANO DR
HACIENDA HGTS CA 91745

144060138729 1 1C01CY1FB11M1
VITCO NUCLEAR PRODUCTS INC
STEVE MARSH
QUALITY ENGINEERING
8171 TYLER BLVD
MENTOR OH 44060

178711138680 1 1C01CY1FB11M1
AUBURN L MITCHELL
OFC OF GOVERNOR - PO BOX 12428
AUSTIN TX 78711

101950107423 1 1C01CY1FB11M1
OFFICE OF MAYOR
EDWARD G MOLIN
MAYOR CITY OF NEWBURYPORT
CITY HALL
NEWBURYPORT MA 01950

161107139828 1 1C01CY1FB11M1
MRS. PHILIP JOHNSON
1987 STRATFORD LANE
ROCKFORD IL 61107

170806091020 1 1C01CY1FB11M1
H A PLETTERER
3456 VILLA ROSE DR
BATON ROUGE LA 70806

118914109690 1 1C01CY1FB11M1
ABB POWER DISTRIBUTION INC
E W RHOADS
QA DIRECTOR
4379 COUNTY LINE RD
CHALFONT PA 18914

178750105019 1 1C01CY1FB11M1
JOSE ROESSET
11909 ARCH HILL DR
AUSTIN TX 78750

177083105990 1 1C01CY1FB11M1
DELMAR E RUSSELL
15238 ENSENADA DR
HOUSTON TX 77083

1SPAIN137465 1 1C01CY1FB11M1
JOAQUIN SANCHEZ BAPTIS
C/RES TORRES, 7
BARCELONA 08017 SPAIN

102809143137 1 1C01CY1FB11M1
EDNA SANROMA
PO BOX 686
BRISTAL RI 02809

128461109517 1 1C01CY1FB11M1
R B STARKEY JR
SITE MANAGER
BX 10429 BRUNSWICK NUC PROJECT
SOUTHPORT NC 28461

1CANAD079706 1 1C01CY1FB11M1
CHRIS TOOMEY
37 LOCKDARE STREET--AGINCOURT
ONTARIO M1S 2Z5 CANADA

103054139730 1 1C01CY1F311M1
WALTER ZALUZYNY
CHAIRMAN-BOARD OF SELECTMAN
PO BOX 116
VERNON VT 05354

1AUSTRI138785 1 1C01CY1F311M1
PATRICIA ZUNIGA
HARMONIEGASSE 479
1090 WIEN AUSTRIA

11740511371 1 1C01CY1F311M1
A C VALVE INC
VALVE OPERATIONS
JAMES THOMPSON
25 WYNSHIL ROAD
POB 493
YORK PA 17405

103802143592 1 1C01CY1F311M1
ABC COMBUSTION ENGINEERING
NEWINGTON OPERATIONS
JONATHAN W LEAVITT
PO BOX 830
PORTSMOUTH NH 03802

122070118594 1 1C01CY1F311M1
A32 INC
EDWARD C ABBOTT
1175 HERNDON PKWY
SUITE 150
HERNDON VA 22070

120005143271 1 1C01CY1F311M1
ACEC RESEARCH & MGMT FOUNDATION
GREGORY R COLEMAN
VICE-PRESIDENT
1015 FIFTEENTH ST
STE 802
WASHINGTON DC 20005

102140109557 1 1C01CY1F311M1
ADLPIPE INC
2 TYLER COURT
CAMBRIDGE MA 02140

199352182403 1 1C01CY1F311M1
ADVANCED NUCLEAR FUELS CORP
REG AD FUEL LICENSING
MANAGER
2111 HORN RAPIDS RD
PO BOX 130
RICHLAND WA 99352

199352091686 1 1C01CY1F311M1
ADVANCED NUCLEAR FUELS CORP
RESEARCH & TECHNOLOGY CENTER
LIBRARIAN
2101 HORN RAPIDS ROAD
LIBRARY
RICHLAND WA 99352

199352091498 1 1C01CY1F311M1
ADVANCED NUCLEAR FUELS CORP
QA
C J VOLMER
2101 HORN RAPIDS RD
MS-32
RICHLAND WA 99352

16012613710 1 1C01CY1F311M1
ADVANCED TECH ENGR SYSTEMS INC
MARK MCGOUGH
360 W BUTTERFIELD RD
SUITE 320
ELMHURST IL 60126

130328093974 1 1C01CY1F311M1
ADVANCED TECHNOLOGY ENGR SYS
4 CONCOURSE PKWY
SUITE 2150
ATLANTA GA 30328

122091110347 1 1C01CY1F311M1
ADVANCED TECHNOLOGY ENGR SYS
MICHAEL WHITE
12005 SURFIRE VALLEY DR
MPD C-3.02
RESTON VA 22091

1ENGLA143135 1 1C01CY1F311M1
AEA TECHNOLOGY
INTERNATIONAL COLLABORATION BR
N W DAVIES
RISLEY WARRINGTON
CHESHIRE WA36AT ENGLAND

1CANAD143157 1 1C01CY1F311M1
AEC/CANAD
J PAV-SAP
2251 SPEAKMAN DR
SP2F4
MISS ONT L5K1R2 CANADA

193583103310 1 1C01CY1F311M1
AEROTEST OPERATIONS INC
PRESIDENT
3455 FOSTORIA WAY
SAN RAMON CA 94583

194549058759 1 1C01CY1F311M1
AEROTEST OPERATIONS INC
RICHARD L DEWACHEK
CONSULTANT
819 MOUNTAIN VIEW DRIVE
149
LAFAYETTE CA 94549

172203063658 1 1C01CY1F311M1
AFCO STEEL INC
E J HOSEY
QA MANAGER
1423 E 6TH ST PO BOX 231
LITTLE ROCK AR 72203

136104138796 1 1C01CY1F311M1
ALABAMA DEPT OF PUBLIC HEALTH
STATE HEALTH OFFICER
STATE OFFICE BUILDING
MONTGOMERY AL 36104

136130056611 1 1C01CY1F311M1
ALABAMA DEPT OF PUBLIC HEALTH
ENVIRONMENTAL HEALTH ADMIN
AURRY GODWIN
CHIEF-BUREAU OF RAD HEALTH
510 STATE OFC BLDG
MONTGOMERY AL 36130

136420139797 1 1C01CY1F311M1
ALABAMA ELECTRIC CO
JAMES A VANN
EXEC VICE PRES & GEN MGR
PO BOX 550
ANDALUSIA AL 36420

135201141001 1 1C01CY1F311M1
ALABAMA POWER CO
FARLEY PROJECT
DOCUMENT CONTROL SUPVR
PO BOX 1295
LIN 8031
BIRMINGHAM AL 35201

136319080531 1 1C01CY1FB11M1
ALABAMA POWER CO
FARLEY 1 NPS
GENERAL MANAGER
COLUMBIA AL 36319

135201143085 1 1C01CY1FB11M1
ALABAMA POWER CO
W G HAIRSTON, III
SENIOR VICE PRESIDENT
40 INVERNESS CTR PKWY-BOX 1295
BIRMINGHAM AL 35201

135291109558 1 1C01CY1FB11M1
ALABAMA POWER CO
NUCLEAR GENERATION
W G HAIRSTON III
SENIOR VICE PRESIDENT
PO BOX 2641
BIRMINGHAM AL 35291

116157140660 1 1C01CY1FB11M1
ALARON CORP
WILLIAM DARBYSHIRE
RD 2 - BOX 2140A
WAMFUM PA 16157

136331091368 1 1C01CY1FB11M1
ALFAH INC
BRUCE GRANTHAM
QA MANAGER
PO BOX 1334
ENTERPRISE AL 36331

117108107812 1 1C01CY1FB11M1
ALLEGHENY ELECT COOPERATIVE INC
JESSE STILTON
PRESIDENT
PO BOX 1266
HARRISBURG PA 17108

129812025953 1 1C01CY1FB11M1
ALLIED GENERAL NUC SERVICES
J A BUCKHAM
PO BOX 847
BARNWELL SC 29812

117331091434 1 1C01CY1FB11M1
ALLOY PODD INC
T R HOCKER
QA MANAGER
WILSON AVE PO BOX 517
HANOVER MA 17331

107054137524 1 1C01CY1FB11M1
ALPHA OMEGA TECH INC
FOREIGN OPERATIONS
CRAIG BARNETT
DIRECTOR ENGR SERVICES
1279 ROUTE 46
PARSIPPANY NJ 07054

102110137984 1 1C01CY1FB11M1
ALTRAN CORP
E F TRAINOR
VICE PRESIDENT
184 HIGH ST
BOSTON MA 02110

110017138726 1 1C01CY1FB11M1
AMER SOCIETY MECHANICAL ENGRS
NUCLEAR CODES & STANDARDS
JUNE LING
DIRECTOR
345 EAST 47TH ST
NEW YORK NY 10017

107039139201 1 1C01CY1FB11M1
AMERACE CORP
INDUSTRIAL ELECTRICAL PRODUCTS
JOSEPH FERGUSON
DIRECTOR QUALITY ASSURANCE
530 W MT PLEASANT AVE
LIVINGSTON NJ 07039

107039139275 1 1C01CY1FB11M1
AMERACE CORP
QUALITY ASSURANCE
JOSEPH FERGUSON
DIRECTOR
530 W MT PLEASANT AVE
LIVINGSTON NJ 07039

106032031448 1 1C01CY1FB11M1
AMERICAN NUCLEAR INSURERS
LIBRARY
DOTTY SHERMAN
270 FARMINGTON AVE
SUITE 245
FARMINGTON CT 06032

143528141983 1 1C01CY1FB11M1
AMERICAN WARMING & VENT INC
DONALD SLOAN
QA MANAGER
7300 INTERNATIONAL DR
HOLLAND OH 43528

170809142066 1 1C01CY1FB11M1
AMERSHAM CORP
GAMMA DIVISION
ATTN: GENERAL MANAGER
6134 HOLLYFIELD DR
BATON ROUGE LA 70809

160005140053 1 1C01CY1FB11M1
AMERSHAM CORP
BRYAN W BAKER
2636 S CLEARBROOK DR
ARLINGTON HEIGHTS IL 60005

117701091379 1 1C01CY1FB11M1
ANCHOR DARLING VALVE CO
J J CHAPPELL
MANAGER-ENGINEERING
PO BOX 3428
WILLIAMSPORT PA 17701

117701091380 1 1C01CY1FB11M1
ANCHOR DARLING VALVE CO
G W KNIESER
QA MANAGER
701 FIRST ST PO BOX 7228
WILLIAMSPORT PA 17701

194025103328 1 1C01CY1FB11M1
ANCHOR DARLING VALVE CO
SALES DIVISION
R J MEEK
VICE PRESIDENT
1050 TRINITY DR
MENLO PARK CA 94025

190780141168 1 1C01CY1FB11M1
ANCO ENGINEER INC
NUCLEAR SERVICES
LEN LEONARD
MGR FILTERS & SERVICES
10631 BLOOMFIELD AVE UNIT 15
LDS ALAMITOS CA 90720

177197143581 1 1C01CY1FB11M1
ANDERSON GREENWOOD & CO
ANDERSON GREENWOOD
MGR POWER PRODUCTS
PO BOX 944
STAFFORD TX 77497

170071143986 1 1C01CY1FB11M1
ANDREWS & KUBIK
DAVID R. PIGOTT
555 S FLOWER ST
STE 2850
LOS ANGELES CA 90071

1 1C01CY1FB11M1
ANRE, MITI
NUCLEAR PWR SFTY-INTL
RYUKO FUJII
ADMINISTRATOR-
1-3-1 NISHIJIMIGASEKI
CHIKODA-KU TOKYO 100 JAPAN

1 ITALY 91412 1 1C01CY1FB11M1
ANSALDO COMPONENTI S.P.A.
DIVISIONE GENERALI NE VAPORI
SIGNORILE T. BATTI
QA MANAGER
VIALE SARCA 336
MILANO 20126 MI ITALY

1 ITALY 081551 1 1C01CY1FB11M1
ANSALDO SPA DRGV
TULLIO BADINO
DGP MANAGER
VIALE SARCA 336
MILANO 20123 ITALY

12916103171 1 1C01CY1FB11M1
APPLIED ENGINEERING CO INC
RANFALL C SCHLAMP
QA MANAGER
PO BOX 1327
ORANGE BRG SC 29016

168154109512 1 1C01CY1FB11M1
APPLIED POWER ASSOCIATES INC
LIBERTIAN
1481 FARNAM DRIVE
SUITE 300
OMAHA NE 68154

13147145326 1 1C01CY1FB11M1
J.P.V. SAULIN INC
REGIS BUPP
QA MANAGER
500 RESEARCH DR
WILMINGTON DE 19187

183403137537 1 1C01CY1FB11M1
ARGONNE NATIONAL LABORATORY
SECURITY MANAGER
PO BOX 2528 - BUILDING 701
IDAHO FALLS ID 83403

183403103690 1 1C01CY1FB11M1
ARGONNE NATIONAL LABORATORY
OFFICE OF NUCLEAR SAFETY
PO BOX 2528
IDAHO FALLS ID 83403

1 43406235 1 1C01CY1FB11M1
ARGONNE NATIONAL LABORATORY
REPORT SECTION
9700 S CASS AVE
COLESE 125
ARGONNE IL 60439

183403103606 1 1C01CY1FB11M1
ARGONNE NATIONAL LABORATORY
TECHNICAL LIBRARY
P O BOX 2528
IDAHO FALLS ID 83403

160439002189 1 1C01CY1FB11M1
ARGONNE NATIONAL LABORATORY
IRA CHARAK
9700 SOUTH CASS AVE
BLDG 208
ARGONNE IL 60439

160439103509 1 1C01CY1FB11M1
ARGONNE NATIONAL LABORATORY
OFFICE OF QA & SAFETY
DENNIS C PARZYCK
QUALITY ASSURANCE & SAFETY QSC
9700 S CASS AVE
ARGONNE IL 60439

160439005948 1 1C01CY1FB11M1
ARGONNE NATIONAL LABORATORY
MCT-212
R W WEEKS
9700 SOUTH CASS AVENUE
ARGONNE IL 60439

185007104467 1 1C01CY1FB11M1
ARIZONA CORPORATION COMMISSION
JOHN W NORMAN
CHIEF ENGINEER
1200 W WASHINGTON ST
PHOENIX AZ 85007

185072104778 1 1C01CY1FB11M1
ARIZONA NUCLEAR POWER PROJECT
W F CONWAY
EXECUTIVE VICE PRESIDENT
PO BOX 52034
M/S-7012
PHOENIX AZ 85072

185040107922 1 1C01CY1FB11M1
ARIZONA RADIATION REGULATORY AGCY
CHARLES F TEFORD
DIRECTOR
4414 SOUTH 40 ST
SUITE 2
PHOENIX AZ 85040

172205107535 1 1C01CY1FB11M1
ARKANSAS DEPT OF HEALTH
DIV OF ENVIRON HEALTH PROT
BRETA J DICUS
DIRECTOR
4815 W MARKHAM ST
LITTLE ROCK AR 72205

172801142342 1 1C01CY1FB11M1
ARKANSAS POWER & LIGHT CO
INDUSTRY EVENTS ANALYSIS
MANAGER
ROUTE 3 - BOX 1376
RUSSELLVILLE AR 72801

172203093192 1 1C01CY1FB11M1
ARKANSAS POWER & LIGHT CO
NUCLEAR OPERATIONS
GENE CAMPBELL
VICE PRESIDENT
PO BOX 551
LITTLE ROCK AR 72203

172203005004 1 1C01CY1FB11M1
ARKANSAS POWER & LIGHT CO
ENERGY SUPPLY
T S CAMPBELL
SR VICE PRESIDENT
PO BOX 551
LITTLE ROCK AR 72203

172801064687 1 1C01CY1FB11M1
ARKANSAS POWER & LIGHT CO
JESSALYN DAVIS
OFFICE SVCS SUPERINTENDENT
RT 3 BOX 1376
RUSSELLVILLE AK 72801

172203009220 1 1C01CY1FB11M1
ARKANSAS POWER & LIGHT CO
LICENSING
DALE E JAMES
SUPERVISOR
PO BOX 551
LITTLE ROCK AR 72203

120814079396 1 1C01CY1FB11M1
ARMED FORCES RADIOBIO RES INST
RADIATION SOURCES DEPT R
CHARLES GALIFY
CHAIRMAN RDS DEPT
BETHESDA NAVY MEDICAL CTR
BETHESDA MD 20814

120814079397 1 1C01CY1FB11M1
ARMED FORCES RADIOBIO RES INST
REACTOR DIVISION
MARK MOORE
REACTOR FACILITY DIRECTOR
AFRRI-RSD
BETHESDA MD 20814

144141141563 1 1C01CY1FB11M1
ASCOA FIRE SYSTEMS
JOHN J GULLO JR
DIRECTOR QUALITY ASSURANCE
PO BOX 418012
CLEVELAND OH 44141

1SPAIN103814 1 1C01CY1FB11M1
ASOCIACION NUCLEAR VANDELLOS
PROYECTO C N VANDELLOS II
MIGUEL CAMPS
DIRECTOR
TRAVESSERA DE LES CORTS
39 43 BARCELONA 28 SPAIN

108232092197 1 1C01CY1FB11M1
ATLANTIC CITY ELECTRIC CO
PRODUCTION
HENRY C SCHWEMM, JR.
VICE PRESIDENT
1199 BLACK HORSE PIKE-BOX 1500
PLEASANTVILLE NJ 08232

108232105093 1 1C01CY1FB11M1
ATLANTIC CITY ELECTRIC CO
JOINT GEN
S B UNGERER
MGR JOINT GEN PROJ
P O BOX 1500
PLEASANTVILLE NJ 08232

1CZECH143285 1 1C01CY1FB11M1
ATOMIC ENERGY COMMISSION
FOREIGN RELATIONS DEPT
LADISLAV ANTL
ADMINISTRATOR
SLESZSKA 9
12029 PRAGUEZ CZECHOSLO

1CANAD091227 1 1C01CY1FB11M1
ATOMIC ENERGY CONTROL BOARD
EVENTS ANALYSIS GROUP
HELMY RAGHER
PO BOX 1046
OTTAWA K1P 5S9 CANADA

1EGYPT066990 1 1C01CY1FB11M1
ATOMIC ENERGY ESTABLISHMENT
F H HAMMAD
ADMINISTRATOR
101 KASR ELEINY ST
CAIRO EGYPT

107932079111 1 1C01CY1FB11M1
AUTOMATIC SWITCH CO
VALVE ENGINEERING DEPT
JOHN R SHANK
PRODUCT ENGINEERING MGR
HANOVER ROAD
FLORHAM PARK NJ 07932

132785052928 1 1C01CY1FB11M1
ARMCO INC
STAINLESS STEEL DIV
ROBERT W SCHULTZ
QUALITY ASSURANCE SUPV
RT 2 BOX 1A
WILLOWOOD FL 32785

120814062966 1 1C01CY1FB11M1
ARMED FORCES RADIOBIO RES INST
DIRECTORS OFFICE MAND
GEORGE W IRVING III
DIRECTOR JFRRI
BETHESDA NAVY MED CTR NMMC
BETHESDA MD 20814

195201139318 1 1C01CY1FB11M1
ASCO/DELTA
KEN SCHWARTZ
MANAGER-ENGINEERING
PO BOX 1995
STOCKTON CA 95201

118106103548 1 1C01CY1FB11M1
ASEA BROWN BOVERI
PROTECTIVE RELAY DIV
R CONRAD
QA MANAGER
35 N SNOWDRIFT RD
ALLENTOWN PA 18106

133707111201 1 1C01CY1FB11M1
ASSOCIATED POWER SYSTEMS INC
EDMUND C EGLINTON
PRESIDENT
5500 CENTRAL AVE #A
ST PETERSBURG FL 33707

108232108842 1 1C01CY1FB11M1
ATLANTIC CITY ELECTRIC CO
GOVERNMENT AFFAIRS
RICHARD M STOKES
MANAGER
1199 BLACK HORSE PIKE BOX 126
PLEASANTVILLE NJ 08232

1CHINA142813 1 1C01CY1FB11M1
ATOMIC ENERGY CNCL
DER-YU HSIA
DIRECTOR
67,LANE144,KEELUNG RD-SEC 4
TAI PEI TAI 10772 CHINA

1CANAD143284 1 1C01CY1FB11M1
ATOMIC ENERGY CONTROL BOARD
PLANNING COORDINATION DIV
TOMA DIAMANTSTEIN
ADMINISTRATOR
PO BOX 1046
OTTAWA K1P5S9 CANADA

1TAIWAN111039 1 1C01CY1FB11M1
ATOMIC ENERGY COUNCIL
ADMINISTRATOR
67 LANE 144 KEELUNG RD SEC 4
TAIPEI 10772 TAIWAN

1CANAD056819 1 1C01CY1FB11M1
ATOMIC ENERGY OF CANADA LTD
CANUO OPERATIONS
LIBRARY
1155 RUE METCALFE
2ND FLOOR
MONTREAL QUEBEC CANADA

107932091387 1 1C01CY1FB11M1
AUTOMATIC SWITCH CO
G B TOMPSEN
DIRECTOR QA
50-55 HANOVER RD
FLORHAM PARK NJ 07932

1CANAD053197 1 1C01CY1FB11M1
B & W CANADA LTD
GALT ONTARIO CANADA

120852137707 1 1C01CY1FB11M1
B & W NUCLEAR TECH
NUCLEAR POWER DIVISION
ROBERT B BORSUM
1700 ROCKVILLE PIKE
SUITE 525
ROCKVILLE MD 20852

163249052949 1 1C01CY1FB11M1
B LINE SYSTEMS INC
RICH CAIN
QA MANAGER
509 WEST MONROE STREET
HIGHLAND IL 62249

124506103169 1 1C01CY1FB11M1
BARCOCK & WILCOX CO
NUCLEAR POWER DIV
TECH LIBRARY
PO BOX 10935
LYNCHBURG VA 24506

120852140105 1 1C01CY1FB11M1
BARCOCK & WILCOX CO
ROCKVILLE LICENSING SVCS
ROBERT B BORSUM
1700 ROCKVILLE PIKE
SUITE 525
ROCKVILLE MD 20852

124506141604 1 1C01CY1FB11M1
BARCOCK & WILCOX CO
NAVAL NUCLEAR FUEL DIV
CHARLIE C BOYD
PO BOX 11165
LPC
LYNCHBURG VA 24506

124506103169 1 1C01CY1FB11M1
BARCOCK & WILCOX CO
QA
W T ENGELKE
MANAGER-QUALITY & SAFETY
PO BOX 10935 3315 OLD FOREST R
LYNCHBURG VA 24506

124505140590 1 1C01CY1FB11M1
BARCOCK & WILCOX CO
NNFD
ARNE F OLSEN
PO BOX 785
42
LYNCHBURG VA 24505

124506106530 1 1C01CY1FB11M1
BARCOCK & WILCOX CO
NUCLEAR POWER DIVISION
R R STEINKE
PO BOX 10935
OFR
LYNCHBURG VA 24506

124506139153 1 1C01CY1FB11M1
BARCOCK & WILCOX CO
NUCLEAR POWER DIV
J H TAYLOR
MGR LICENSING
PO BOX 10935
LYNCHBURG VA 24506

144092079497 1 1C01CY1FB11M1
BAILEY CONTROLS CO
BARCOCK & WILCOX
A J KUKWA
29801 EUCLID AVE
3S1
WICKLIFFE OH 44092

135201139795 1 1C01CY1FB11M1
BALCH, BINGHAM, BAKER ET AL
ROBERT A BUETTNER
PO BOX 306
BIRMINGHAM AL 35201

178758141779 1 1C01CY1FB11M1
BALCONES RESEARCH CTR
NUC ENGR TECH LAB
THOMAS HAUER
SUPERVISOR
10100 BURNET ROAD
AUSTIN TX 78758

120657139774 1 1C01CY1FB11M1
BALTIMORE GAS & ELECTRIC CO
NUCLEAR ENERGY DIV
GEN SUPV QUALITY ASSURANCE
CALVERT CLIFFS NUCLEAR PWR PLT
LUSBY MD 20657

121203139777 1 1C01CY1FB11M1
BALTIMORE GAS & ELECTRIC CO
LEGAL DEPT
J P BENNETT
COUNSEL
PO BOX 1475
BALTIMORE MD 21203

121203081568 1 1C01CY1FB11M1
BALTIMORE GAS & ELECTRIC CO
SECURITY SERVICES
VAUGHN F BRADLEY
DIRECTOR
PO BOX 1475 MOB RBC
BALTIMORE MD 21203

121203107128 1 1C01CY1FB11M1
BALTIMORE GAS & ELECTRIC CO
GENERAL COUNSEL
D A BRUNE ESQ
P O BOX 1475
BALTIMORE MD 21203

121203081567 1 1C01CY1FB11M1
BALTIMORE GAS & ELECTRIC CO
GENERAL SERVICES
HERBERT O COSS, JR
VICE PRESIDENT
PO BOX 1475
BALTIMORE MD 21203

120657140920 1 1C01CY1FB11M1
BALTIMORE GAS & ELECTRIC CO
NUCLEAR ENERGY
G C CREEL
VICE PRESIDENT
P.O. BOX 1535 MD RTS 2 & 4
LUSBY MD 20657

120657006431 1 1C01CY1FB11M1
BALTIMORE GAS & ELECTRIC CO
CALV CLIFFS NUC PWR PLT
R P HEIBEL
GENERAL SUPERVISOR-QUALITY
LUSBY MD 20657

1206570063178 1 1C01CY1FB11M1
BALTIMORE GAS & ELECTRIC CO
NUC ENG SERVICES
BRUCE MONTGOMERY
PRINCIPAL ENGINEER LICENSING
BOX 1535 CALVERT CLIFFS
LUSBY MD 20657

120657135714 1 1C01CY1FB11M1
BALTIMORE GAS & ELECTRIC CO
CALVERT CLIFF NUC PWR PLANT
R C L OLSON
PO BOX 1535
2-NDF
LUSBY MD 20657

121203081369 1 1C01CY1FB11M1
BALTIMORE GAS & ELECTRIC CO
JOHN W ROSS JR
SECURITY PLANNING SPECIALIST
BOX 1475-(74)WINDSOR OFC BLDG
BALTIMORE MD 21203

19506006366R 1 1C01CY1FB11M1
BARON & ASSOCIATES INC
STEPHEN L BARON
207 MISSION STREET
SANTA CRUZ CA 95060

143201102094 1 1C01CY1FB11M1
BATTELLE
NUCLEAR SERVICES GROUP
CLARENCE WILLIAMS JR
QUALITY MGR
505 KING AVE
COLUMBUS OH 43201

199352006329 1 1C01CY1FB11M1
BATTELLE PACIFIC NORTHWEST LAB
SPENCER H RUSH
CONSULTANT
BOX 999
RICHLAND WA 99352

119464110883 1 1C01CY1FB11M1
BECHTEL CORP
T E LOGAN
OFFICE MANAGER
1610 MEDICAL DRIVE
POTTSTOWN PA 19464

120877142193 1 1C01CY1FB11M1
BECHTEL KWU ALLIANCE
RECHTEL POWER
K G HESS
15740 SHADY GROVE
MS 28-4
GAITHERSBURY MD 20877

137830094196 1 1C01CY1FB11M1
BECHTEL NATIONAL INC
VAL BOYCHARD
PO BOX 350
OAKRIDGE TN 37830

120878142986 1 1C01CY1FB11M1
BECHTEL POWER CORP
NANCY G CHARMAN
SERCH MANAGER
9801 WASHINGTONIAN BLVD
GAITHERSBURG MD 20878

190650137184 1 1C01CY1FB11M1
BECHTEL POWER CORP
WESTERN-NORWALK
S H FREID
12440 E IMPERIAL HWY
F2
NORWALK CA 90650

120877064676 1 1C01CY1FB11M1
BECHTEL POWER CORP
R HICKMAN
SUPERVISOR REC MGMT
15740 SHADY GROVE ROAD
GAITHERSBURG MD 20877

148106109309 1 1C01CY1FB11M1
BECHTEL POWER CORP
ANN ARBOR OFFICE
JERRY R MCKRIDE
QA MANAGER
PO BOX 1000
ANN ARBOR MI 48106

120657002981 1 1C01CY1FB11M1
BALTIMORE GAS & ELECTRIC CO
NUCLEAR OPERATIONS-41R PLANT
L B RUSSELL
MD ROUTES 2 AND 4
CCNPP
LUSBY MD 20657

191749052940 1 1C01CY1FB11M1
BARTON INSTRUMENTS
UNIT OF ITT
G R WELT
QA DIRECTOR
900 SOUTH TURNBULL CANYON RD
CITY OF INDUSTRY CA 91749

143201139936 1 1C01CY1FB11M1
BATTELLE MEMORIAL INSTITUTE
DRAIG E JENSEN
RADIOLOGICAL SAFETY OFFICER
505 KING AVENUE
COLUMBUS OH 43201

199352140317 1 1C01CY1FB11M1
BATTELLE PACIFIC NORTHWEST LAB
LICENSING SECTION
ROBERT L GRUEL
OPERATOR
K6-46
RICHLAND WA 99352

177252006455 1 1C01CY1FB11M1
BECHTEL INC
BI OFFICE SERVICES
C W TERRY
PO BOX 2166
1W215
HOUSTON TX 77252

194119866973 1 1C01CY1FB11M1
BECHTEL NATIONAL INC
R N I LIBRARY
PO BOX 3965
45/10/A1
SAN FRANCISCO CA 94119

137831103913 1 1C01CY1FB11M1
BECHTEL NATIONAL INC
M L BUCHAN
300 OAK RIDGE TRPK
PO BOX 350
OAK RIDGE TN 37831

120877139776 1 1C01CY1FB11M1
BECHTEL POWER CORP
G J FALIBOTA
PROJECT ENGINEER
15740 SHADY GROVE RD
MS-2LL24
GAITHERSBURG MD 20877

148106052944 1 1C01CY1FB11M1
BECHTEL POWER CORP
ROGER H HEYN
PROJECT MANAGER
POST OFFICE BOX 1000
ANN ARBOR MI 48106

120878142920 1 1C01CY1FB11M1
BECHTEL POWER CORP
QUALITY ASSURANCE
D C KANSAL
9801 WASHINGTONIAN BLVD
1A1
GAITHERSBURG MD 20878

190650091921 1 1C01CY1FB11M1
BECHTEL POWER CORP
WESTERN POWER DIVISION
DEE MORRIS
CHIEF LIBRARIAN
12440 E IMPERIAL HWY
NORWALK CA 90650

19411906104 1 1C01CY1FB11M1
BECHTEL POWER CORP
SAN FRANCISCO REGIONAL OFC
KENNETH H PISCHER
PO BOX 193965
45/29/C38
SAN FRANCISCO CA 94119

194119091394 1 1C01CY1FB11M1
BECHTEL POWER CORP
J R VIOLETTE
PROJECT MANAGER
PO BOX 3965
SAN FRANCISCO CA 94119

101888142942 1 1C01CY1FB11M1
BERGEN-PATERSON PIPESUPPORT CO
QUALITY ASSURANCE
G M QUINN
DIRECTOR
225 MERRIMAC ST - PO BOX 4011
WOBURN MA 01888

1INDIA142357 1 1C01CY1FB11M1
BHABHA ATOMIC RESEARCH CENTRE
RADIOLOGICAL PROTECTION
DR. G. VENKATARAMAN
HEAD
INDUSTRIAL-ADVISORY & CNTRL
TROMBAYBOMBAY400085 INDIA

154114091400 1 1C01CY1FB11M1
BLACK & VEATCH
R E BLAISDELL
QA MANAGER
PO BOX 8405
KANSAS CITY MO 64114

1WGERM011714 1 1C01CY1FB11M1
BMU
DIV RS I 3
HANS C BREEST
ADMINISTRATOR
POSTFACH 120627
D-5300 BONN 1 WGERMANY

123093134780 1 1C01CY1FB11M1
BOARD OF SUPERVISORS
LOUISA COUNTY
WILLIAM C PORTER, JR
COUNTY ADMINISTRATOR
PO BOX 160
LOUISA VA 23093

102360109237 1 1C01CY1FB11M1
BOSTON EDISON CO
PLANT DEPT
ROY A ANDERSON
ROCKY HILL ROAD
MS-39
PLYMOUTH MA 02360

102360140113 1 1C01CY1FB11M1
BOSTON EDISON CO
SYSTEMS ENGINEERING DIV
WILLIAM S CLANCY
MANAGER
RFD #1, ROCKY HILL RD
PLYMOUTH MA 02360

102184029316 1 1C01CY1FB11M1
BOSTON EDISON CO
LICENSING DIV
JOHN B DIETRICH
MANAGER
25 BRAINTREE HILL PARK
BRAINTREE MA 02184

102184103184 1 1C01CY1FB11M1
BOSTON EDISON CO
BONNIE A GORDON
NUCLEAR RECORDS SPECIALIST
25 BRAINTREE HILL OFFICE PARK
BRAINTREE MA 02184

190638137264 1 1C01CY1FB11M1
BECHTEL POWER CORP
DOCUMENT PROCESSING
JOYCE PRICE
RECORDS MANAGER
17000 VALLEY VIEW
LA MIRADA CA 90638

135650139122 1 1C01CY1FB11M1
BERGEN PATERSON PIPESUPPORT CO
MICHAEL ZILLS
QA MANAGER
PO BOX 426
MOULTON AL 35650

1INDIA003464 1 1C01CY1FB11M1
BHABHA ATOMIC RESEARCH CENTRE
LIBRARY & INFO SERVICES
M R BALAKRISHNAN
SCIENTIFIC OFFICER
TROMBAY
BOMBAY 400 085 INDIA

164114079072 1 1C01CY1FB11M1
BLACK & VEATCH
CENTRAL LIBRARY
PO BOX 8405
KANSAS CITY MO 64114

1WGERM005318 1 1C01CY1FB11M1
BMET
REACTOR SAFETY RESEARCH
ADMINISTRATOR
POSTFACH 200706
5300 BONN 2 WGERMANY

195591091019 1 1C01CY1FB11M1
BOARD OF SUPERVISORS
CHAIRMAN
825 5TH ST
EUREKA CA 95501

119468094184 1 1C01CY1FB11M1
BOARD OF SUPV LIMERICK TOWNSHP
CHAIRMAN
646 WEST RIDGE PIKE
LIMERICK PA 19468

102360140913 1 1C01CY1FB11M1
BOSTON EDISON CO
PILGRIM NUCL POWR STAT
RALPH G BIRD
SENIOR VICE PRESIDENT NUCLEAR
ROCKY HILL RD
PLYMOUTH MA 02360

102184149112 1 1C01CY1FB11M1
BOSTON EDISON CO
JOHN DIETRICH
LICENSING DIVISION MANAGER
25 BRAINTREE HILL PARK
BRAINTREE MA 02184

102115106662 1 1C01CY1FB11M1
BOSTON EDISON CO
OFC TECH & PROFES WKRS UNION
JOSEPH C FAHERTY
161 MASSACHUSETTS AVE
RM 310
BOSTON MA 02115

106226091411 1 1C01CY1FB11M1
BRAND REX CO
LOUIS B ROBERTS
VICE PRES QUALITY ASSURANCE
1600 MAIN ST
WILLIAMANTIC CT 06226

149106139812 1 1C01CY1FB11M1
BRIDGMAN PUBLIC LIBRARY
MARILYN ROTH
DIRECTOR
4460 LAKE ST
BRIDGMAN MI 49106

111973066851 1 1C01CY1FB11M1
BROOKHAVEN NATIONAL LABORATORY
REACTOR DIVISION
W J BRYNDA
UPTON
BLDG 120
LONG ISLAND NY 11973

111973136005 1 1C01CY1FB11M1
BROOKHAVEN NATIONAL LABORATORY
LANCE JUNKER
HEPP PLANT MANAGER
BLDG 750
UPTON NY 11973

1WGERM053329 1 1C01CY1FB11M1
BROWN JOVERT REAKTOR GMPH
ART TPE 14
FACHBUCHEREI
DUDENSTR 44
6800 MANNHEIM 1 WGERMANY

106856057905 1 1C01CY1FB11M1
BURNDY CORP
POWER
M R MONASHKIN
CONN AND RICHARDS AVE
203
NORWALK CT 06856

107649103175 1 1C01CY1FB11M1
BURNS & ROE INC
J PATTI
CHIEF NUCLEAR ENGINEER
800 KINDERKANACK RD
ORADELL NJ 07649

190058032965 1 1C01CY1FB11M1
BWIP INTERNATIONAL INC
PUMP DIVISION
R D HAM
2300 E VERNON AVE
05
LOS ANGELES CA 90058

113126094460 1 1C01CY1FB11M1
C & G VIDEO SYSTEMS INC
DRA/WISEST STUDIO- PHOTOGRAPHY
223 W 6TH ST
OSWEGO NY 13126

106450142943 1 1C01CY1FB11M1
C N FLAGG POWER INC
QUALITY ASSURANCE
GLENN R LACEY
MANAGER
450 MURDOCK AVE
MERIDEN CT 06450

190018092354 1 1C01CY1FB11M1
CALIFORNIA ATTORNEY GENERAL
MICHAEL J STROMWASSER
SPECIAL ASST ATTORNEY GEN
3590 WILSHIRE BLVD
SUITE 800
LOS ANGELES CA 90010

194549143153 1 1C01CY1FB11M1
CALIFORNIA RADIO MAILS MGMT
ALAN D MASTERNAK
PO BOX 1639
SUITE 380
LAFAYETTE CA 94549

111973106139 1 1C01CY1FB11M1
BROOKHAVEN NATIONAL LABORATORY
DEPT OF NUCLEAR ENERGY
NUCLEAR SAFETY LIBRARY
BLDG 130
UPTON NY 11973

111973030913 1 1C01CY1FB11M1
BROOKHAVEN NATIONAL LABORATORY
SEP
LEONARD C EMMA
ASSOCIATE DIVISION HEAD
BLDG 535A
UPTON NY 11973

177001064710 1 1C01CY1FB11M1
BROWN & ROOT INC
RECORDS MANAGEMENT
W A HEATH JR
MANAGER
PO BOX 3 BLDG 01 BSMT
HOUSTON TX 77001

189158139708 1 1C01CY1FB11M1
BUREAU OF REGULATORY HLTH SVCS
DEPT OF HUMAN RESOURCES
MARY THOMPSON
RADIATION CONTROL SPECIALIST
620 BELROSE ST
LAS VEGAS NV 89158

107649108081 1 1C01CY1FB11M1
BURNS & ROE INC
NUCLEAR PLANT SERVICES
RAY P CHUERON
DIRECTOR
800 KINDERKANACK RD
ORADELL NJ 07649

160603141981 1 1C01CY1FB11M1
BUS & PRO PEOPLE FOR PUB INTR
DOUGLASS W CASSEL
17E MONROE ST
SUITE 212
CHICAGO IL 60603

119462091424 1 1C01CY1FB11M1
C & O POWER SYSTEMS INC
GRAHAM WALKER
MGR APPLICATIONS ENGINEERING
3043 WALTON RD
PLYMOUTH MEETING PA 19462

160559064455 1 1C01CY1FB11M1
C R S VALVE COMP
TRICENTRIC DIV
M L SESHAGIPI
QA MANAGER
40 CHESTNUT AVE
WESTMONT IL 60559

146952105904 1 1C01CY1FB11M1
CABLEC INDUSTRIAL CABLE CO
TING H LING
TECHNICAL CONSULTANT
E 8TH ST PO BOX 188
MARION IN 46752

195914091833 1 1C01CY1FB11M1
CALIFORNIA ENERGY COMMISSION
EXECUTIVE OFFICE
BARBARA BYRON
1516 NINTH ST
36
DAVIS CA 95614

177251080108 1 1C01CY1FB11M1
CAMERON FORGE CO
EXTRUDED PRODUCTS DIV
KEN JURICA
SALES MANAGER
PO BOX 1212
HOUSTON TX 77251

185283143235 1 1C01CY1FB11M1
CAMILLE BAUER INC
TOBAR
ANGELA DE QUINA
O C ENGINEER
7425 S HARL AVE
TEMPE AZ 85283

129550080516 1 1C01CY1FB11M1
CAROLINA POWER & LIGHT CO
ROBINSON 2 NPS
PLANT MANAGER
HARTSVILLE SC 29550

127602005449 1 1C01CY1FB11M1
CAROLINA POWER & LIGHT CO
POWER SUPPLY
LYNN W EURY
EXECUTIVE VICE PRESIDENT
PO BOX 1551
RALEIGH NC 27602

127602109508 1 1C01CY1FB11M1
CAROLINA POWER & LIGHT CO
D E HOLLAR
ASSOCIATE GENERAL COUNSEL
PO BOX 1551
1381
RALEIGH NC 27602

128461030566 1 1C01CY1FB11M1
CAROLINA POWER & LIGHT CO
BRUNSWICK STEAM ELECTRIC PLANT
N V STEWART
P O BOX 10429
SOUTHPORT NC 28461

177241139103 1 1C01CY1FB11M1
CBI
RALPH E KELLEY
DIRECTOR COA
PO BOX 41146
HOUSTON TX 77241

13550137315 1 1C01CY1FB11M1
CBI SERVICES INC
H K HOWERTON
D A MANAGER
P O BOX 10
CORDOVA AL 35556

1SPAIN108939 1 1C01CY1FB11M1
CENTRAL NUCLEAR DE PLMARAZ
CLAUDIO COELLO
123
MADRID 28006 SPAIN

19ELGI057562 1 1C01CY1FB11M1
CENTRE D'ETUDE DE L'ENER NUCL
REACTOR DIVISION
FRANCOIS MOLTE
ADMINISTRATOR
BOERETANG 200
B-2400 MOL BELGIUM

125304063988 1 1C01CY1FB11M1
CHARLESTON AREA MEDICAL CENTER
MEMORIAL DIV
RIDGELY CONANT
DIRECTOR OF NUC MEDICINE
3200 MACCORKLE AVE SE
CHARLESTON WV 25304

129210143246 1 1C01CY1FB11M1
CHEM-NUCLEAR SYSTEMS INC
LIBRARY/DOCUMENT CONTROL
LIBRARIAN
140 STONERIDGE DR
COLUMBIA SC 29210

143162139170 1 1C01CY1FB11M1
CAPITOL MFG CO
DIV OF HARSCO CORP
MARK A SHARROW
QUALITY CONTROL MGR
1501 WEST MAIN ST
WEST JEFFERSON OH 43162

127602094155 1 1C01CY1FB11M1
CAROLINA POWER & LIGHT CO
CHARLES D BARHAM
SENIOR VICE PRESIDENT
PO BOX 1551
RALEIGH NC 27602

128461080961 1 1C01CY1FB11M1
CAROLINA POWER & LIGHT CO
BRUNSWICK STEAM ELEC PLANT
JOSEPH L HARNESS
PLANT MANAGER
PO BOX 10429
SOUTHPORT NC 28461

129550080894 1 1C01CY1FB11M1
CAROLINA POWER & LIGHT CO
ROBINSON 2 NPS
R E MORGAN
GENERAL MANAGER
PO BOX 790
HARTSVILLE SC 29550

127602140700 1 1C01CY1FB11M1
CAROLINA POWER & LIGHT CO
R A WATSON
SR VICE PRESIDENT
PO BOX 1551
RALEIGH NC 27602

160914110587 1 1C01CY1FB11M1
CBI SERVICES INC
BUSINESS DEVELOPEMENT
RICHARD M CONWAY
MANAGER
ST GEORGE RD
BOU8BONNAIS IL 60914

1ENGLA032235 1 1C01CY1FB11M1
CENTRAL ELECTRIC GEN BOARD
CENTRAL LIBRARY
G G TERRY
CHIEF LIBRARIAN
18 WARWICK LANE
LONDON EC4P 4EB COURTENAY HSE ENGLAND

178403139954 1 1C01CY1FB11M1
CENTRAL POWER & LIGHT CO
TERRY PUCKETT
MANAGER STP ACTIVITIES
PO BOX 2121
CORPUS CHRISTI TX 78403

189119141279 1 1C01CY1FB11M1
CER CORP
ELLA JACKSON
LIBRARIAN
950 GRIER DR
LAS VEGAS NV 89119

129212091433 1 1C01CY1FB11M1
CHEM NUCLEAR SYSTEMS INC
PO BOX 726
BARNSWELL SC 29212

160632138687 1 1C01CY1FB11M1
CHICAGO TUBE & IRON CO
QUALITY ASSURANCE
MANAGER
2531 WEST 48TH ST
CHICAGO IL 60632

145219143313 1 1C01CY1FB11M1
CHRIST HOSPITAL
METABOLIC IMAGING CENTER/RET
CRAIG C WILLIAMS
2139 AUBURN AVENUE
CINCINNATI OH 45219

163136140058 1 1C01CY1FB11M1
CHRISTIAN HOSPITAL NE
ROBERT TUREO PHD
RADIATION SAFETY OFFICER
11133 DUNN RD
ST LOUIS MO 63136

120096082274 1 1C01CY1FB11M1
CHUPU ELECTRIC POWER CO INC
MASATOSHI SAKAGUCHI
REPRESENTATIVE
900 17TH ST NW
SUITE 1220
WASHINGTON DC 20006

110987107666 1 1C01CY1FB11M1
CINTECHEM INC
STERLING FOREST RES CTR
JAMES J MCGOVERN
PLANT MANAGER
P O BOX 816
TUXEDO NY 10987

175224065723 1 1C01CY1FB11M1
CITIZENS ASSOC FOR SOUND ENGY
PRESIDENT
1426 S POLK ST
DALLAS TX 75224

178704142178 1 1C01CY1FB11M1
CITY OF AUSTIN
ELECTRIC UTILITY
JOHN GOODING
SUPERVISING ATTORNEY
721 BARTON SPRINGS RD
AUSTIN TX 78704

178757139843 1 1C01CY1FB11M1
CITY OF AUSTIN
ELECTRIC UTILITY DEPARTMENT
W C TOLBERT
MGR JOINT GENERATING PROJECTS
PO BOX 1088
AUSTIN TX 78767

178296103236 1 1C01CY1FB11M1
CITY PUBLIC SERVICE BOARD
NUCLEAR PROJECTS
M T HARDT
DIRECTOR
PO BOX 1771
SAN ANTONIO TX 78296

144081080499 1 1C01CY1FB11M1
CLEVELAND ELEC ILLUMINATING CO
PERRY S NPS
GENERAL MANAGER
PO BOX 97
PERRY OH 44081

144101139806 1 1C01CY1FB11M1
CLEVELAND ELEC ILLUMINATING CO
DAVID E BURKE
ESQUIRE
PO BOX 5000
CLEVELAND OH 44101

144081139805 1 1C01CY1FB11M1
CLEVELAND ELEC ILLUMINATING CO
PERRY PLANT
M D LYSER
10 CENTER ROAD
MZ 5270
N PERRY OH 44081

144081104155 1 1C01CY1FB11M1
CLEVELAND ELEC ILLUMINATING CO
PERRY NUCLEAR POWER PLANT
W W MILES
PO BOX 97
E130
PERRY OH 44081

144081141846 1 1C01CY1FB11M1
CLEVELAND ELEC ILLUMINATING CO
PERRY NUCLEAR POWER PLANT
R A NEWKIRK
P.O. BOX 97
M/S E210
PERRY OH 44081

144081082142 1 1C01CY1FB11M1
CLEVELAND ELEC ILLUMINATING CO
PERRY NPS
J WALDRON
PRINCIPAL ENGINEER
10 CENTER RD
PERRY OH 44081

1BRAZ1008064 1 1C01CY1FB11M1
CNEH
ADVISER TO THE PRESIDENT
B C CNEH
ADMINISTRATOR
RUA GENERAL SEVERIANO 90
RIO DE JANEIRO 22294 BRAZIL

163130139830 1 1C01CY1FB11M1
COALITION FOR THE ENVIRONMENT
ST LOUIS REGION
DAN I BOLEF
PRESIDENT-BO OF DIRECTORS
6267 DELMAR BLVD
UNIVERSITY CITY MO 63130

192128139939 1 1C01CY1FB11M1
COLANDREA & ASSOCIATES INC
T R COLANDREA
PO BOX 27121
SAN DIEGO CA 92128

180220004291 1 1C01CY1FB11M1
COLORADO DEPT OF HEALTH
RADIATION CONTROL DIV
ROBERT M QUILLIN
DIRECTOR
4210 EAST 11TH AVE
DENVER CO 80220

153511143024 1 1C01CY1FB11M1
COLTEC INDUSTRIES
WESLEY A BRILL
701 LAWTON AVE
BELOIT WI 53511

106095038343 1 1C01CY1FB11M1
COMBUSTION ENGINEERING INC
LIBRARY 756-405
LIBRARIAN
1000 PROSPECT HILL RD
6435-405
WINDSOR CT 06095

105095100717 1 1C01CY1FB11M1
COMBUSTION ENGINEERING INC
DEPT 9426-DH24
T S BERNARD
ENGR SUPV
1000 PROSPECT HILL RD
WINDSOR CT 06095

120852109719 1 1C01CY1FB11M1
COMBUSTION ENGINEERING INC
C-E POWER SYSTEMS
CHARLES B BRINKMAN
12300 TWINBROOK PKWY
SUITE 330
ROCKVILLE MD 20852

106095103016 1 1C01CY1FB11M1
COMBUSTION ENGINEERING INC
9341-98B
LYNN M CALDON
1000 PROSPECT HILL RD
WINDSOR CT 06095

106095138690 1 1C01CY1FB11M1
COMBUSTION ENGINEERING INC
T COLLIER
1000 PROSPECT HILL RD
9331-400
WINDSOR CT 06095

120852142061 1 1C01CY1FB11M1
COMBUSTION ENGINEERING INC
CLIENT SERVICES
J J CONNOLLY
12300 TWINBROOK PKWY
SUITE 330
ROCKVILLE MD 20852

106095108936 1 1C01CY1FB11M1
COMBUSTION ENGINEERING INC
POWER SYSTEMS BUSINESS
RONALD J FITZGERALD
1000 PROSPECT HILL RD
9370-948B
WINDSOR CT 06095

106095100722 1 1C01CY1FB11M1
COMBUSTION ENGINEERING INC
NON METALLIC MATLS ENGR
J S GLAZMAN
1000 PROSPECT HILL RD
9351-510
WINDSOR CT 06095

106095103690 1 1C01CY1FB11M1
COMBUSTION ENGINEERING INC
QUALITY ASSURANCE
MORTIMER M SLOTZER
1000 PROSPECT HILL RD
5372-1701
WINDSOR CT 06095

137402093936 1 1C01CY1FB11M1
COMBUSTION ENGINEERING INC
NUCLEAR COMPONENTS
W J HEILKER
ANALYTICAL ENGINEERING
911 WEST MAIN ST
CHATTANOOGA TN 37402

106095091035 1 1C01CY1FB11M1
COMBUSTION ENGINEERING INC
DIV 9399
W R HORLACHER
1000 PROSPECT HILL RD
425
WINDSOR CT 06095

106095100726 1 1C01CY1FB11M1
COMBUSTION ENGINEERING INC
DEPT 9493-2322
J C MAULTON
1000 PROSPECT HILL RD
PO BOX 500
WINDSOR CT 06095

106095100718 1 1C01CY1FB11M1
COMBUSTION ENGINEERING INC
DEPT 9332-0407
VIRGIL A PASGEN
1000 PROSPECT HILL RD
WINDSOR CT 06095

106095091445 1 1C01CY1FB11M1
COMBUSTION ENGINEERING INC
C-E POWER SYSTEMS
JOHN P PASQUENZA
1000 PROSPECT HILL DR
9370-98B
WINDSOR CT 06095

103801091446 1 1C01CY1FB11M1
COMBUSTION ENGINEERING INC
C-E NEWINGTON
W R POTTEE
MANAGER-QA
OLD DOVER RD
NEWINGTON NH 03801

106095026584 1 1C01CY1FB11M1
COMBUSTION ENGINEERING INC
A33 CE NUCLEAR POWER
A E SCHERER
1000 PROSPECT HILL RD BOX 500
9301-0407
WINDSOR CT 06095

108095091444 1 1C01CY1FB11M1
COMBUSTION ENGINEERING INC
NUCLEAR POWER BUSINESS
THOMAS SWIFT
1000 PROSPECT HILL DR
9370-948B
WINDSOR CT 06095

1FRAN006953 1 1C01CY1FB11M1
COMITE INTERMINISTERIEL DE
LA SECURITE NUCLEAIRE
BERNARD AUGUSTIN
ADMINISTRATOR
54 RUE DE VARENNE
75700 PARIS FRANCE

146052091449 1 1C01CY1FB11M1
COMMERCIAL FILTERS
PARKER HANIFFIN
JOHN STEWART
QUALITY ASSURANCE MGR
PO BOX 1300
LEBANON IN 46052

160407080565 1 1C01CY1FB11M1
COMMONWEALTH EDISON CO
BRAYWOOD 1 NPS
PLANT MANAGER
GRACEVILLE IL 60407

161010000560 1 1C01CY1FB11M1
COMMONWEALTH EDISON CO
BYRON 1 NPS
PLANT MANAGER
4450 NORTH BZEMAN CHURCH RD
BYRON IL 61010

160450080597 1 1C01CY1FB11M1
COMMONWEALTH EDISON CO
DRESDEN NPS
STATION MGR
RR 1
MORRIS IL 60450

161341080412 1 1C01CY1FB11M1
COMMONWEALTH EDISON CO
LASALLE COUNTY STATION
STATION MGR
RRI BOX 220
MARSEILLES IL 61341

160099080577 1 1C01CY1FB11M1
COMMONWEALTH EDISON CO
ZION 1 NPS
PLANT MANAGER
ZION IL 60099

161242139829 1 1C01CY1FB11M1
COMMONWEALTH EDISON CO
QUAD CITIES NUC POWER STATION
R L BAX
STATION MANAGER
22710 304TH AVE NORTH
CORONA IL 61242

160450141955 1 1C01CY1FB11M1
COMMONWEALTH EDISON CO
DRESDEN
JAMES COONAN
RR 1
MORRIS IL 60450

160099105172 1 1C01CY1FB11M1
COMMONWEALTH EDISON CO
ZION GENERATION STATION
T P JOYCE
STATION MANAGER
101 SHILOH BLVD
ZION IL 60099

160575142329 1 1C01CY1FB11M1
COMMONWEALTH EDISON CO
NUCLEAR LICENSING DEPT
THOMAS J KOVACH
1400 OPUS PLACE
STE 300
DOWNERS GROVE IL 60515

161010052460 1 1C01CY1FB11M1
COMMONWEALTH EDISON CO
BYRON NUCLEAR POWER STA
R PLENIEWICZ
STATION MANAGER
4450 N GERMAN CHURCH RD
BYRON IL 61010

160407093776 1 1C01CY1FB11M1
COMMONWEALTH EDISON CO
ROBERT E QUERIO
STATION MANAGER
RR 1 PO BOX 84
BRACEVILLE IL 60407

160099054689 1 1C01CY1FB11M1
COMMONWEALTH EDISON CO
ZION GEN STATION
W STONE
REGULATORY ASSURANCE SUPVR
SHILOH BLVD & LAKE MICHIGAN
ZION IL 60099

190601091450 1 1C01CY1FB11M1
COMSIP INC
DELPHI SYSTEMS DIV
SID LOHMEYER
PRODUCT MANAGER
3030 RED HAT LA
WHITTIER CA 90601

115222057893 1 1C01CY1FB11M1
COMSTOCK ENGINEERING INC
QA QC DEPT
E C YOCKEY
CORP MGR QA QC SERVICES
912 FORT DUQUESNE BLVD
PITTSBURGH PA 15222

114225024720 1 1C01CY1FB11M1
CONAX BUFFALO CORP
NUCLEAR PRODUCTS DIVISION
W C FEDERICK
VICE PRESIDENT
2300 WALDEN AVE
BUFFALO NY 14225

106106067149 1 1C01CY1FB11M1
CONNECTICUT DEC POLICY & MGMT
ENERGY DIVISION
BRADFORD S CHASE
UNDERSECRETARY FOR ENERGY
80 WASHINGTON STREET
HARTFORD CT 06106

106424006546 1 1C01CY1FB11M1
CONNECTICUT YANKEE ATOM PWR CO
HADDAM NECK PLANT
DONALD H MILLER JR
PLANT MANAGER
PO BOX 127E - RFD 1
EAST HAMPTON CT 06424

161341081556 1 1C01CY1FB11M1
COMMONWEALTH EDISON CO
LA SALLE COUNTY STATION
DIEDERICH
STATION MANAGER
RR 1 PO BOX 220
MARSEILLES IL 61341

160515142335 1 1C01CY1FB11M1
COMMONWEALTH EDISON CO
EXEC TOWERS III
THOMAS J KOVACH
1400 OPUS PLACE
STE 300
DOWNERS GROVE IL 60515

160690093370 1 1C01CY1FB11M1
COMMONWEALTH EDISON CO
CORP SECURITY G O
PATRICK J LAIRD
DIRECTOR OF CORP SECURITY
P O BOX 767
CHICAGO IL 60690

160099079389 1 1C01CY1FB11M1
COMMONWEALTH EDISON CO
ZION GENERATING STATION
G J PLIML
STATION MANAGER
101 SHILOH BLVD
ZION IL 60099

161010103288 1 1C01CY1FB11M1
COMMONWEALTH EDISON CO
SUNNER SORENSEN
SITE PROJECT SUPERINTENDENT
PO BOX 902
BYRON IL 61010

1BELGI063097 1 1C01CY1FB11M1
COMPRIMO BELGIE NV
G DE WILDE
GEN ENG MANAGER
NOORDERLAAN 139
2030 ANTWERPEN BELGIUM

107036091451 1 1C01CY1FB11M1
COMSIP INC
CUSTOMLINE DIVISION
RAYMOND P PEDALINO
CUSTOMLINE QA MANAGER
1418 F LINDEN AVE
LINDEN NJ 07036

160010138701 1 1C01CY1FB11M1
CONAM INSPECTION
INSPECTION DIV
BOYD CREECH
33 W HIGGINS RD
SUITE 1000
SOUTH BARRINGTON IL 60010

114225091454 1 1C01CY1FB11M1
CONAX BUFFALO CORP
JAMES G SCHRAVEN
QA MANAGER
2300 WALDEN AVE
BUFFALO NY 14225

106141103829 1 1C01CY1FB11M1
CONNECTICUT YANKEE ATOM PWR CO
NUCLEAR ENGINEERING & OPER
WILLIAM B ELLIS
SENIOR VICE PRESIDENT
PO BOX 270
HARTFORD CT 06141

106424006751 1 1C01CY1FB11M1
CONNECTICUT YANKEE ATOM PWR CO
HADDAM NECK PLANT
J P STEVZ
NUCLEAR STATION DIRECTOR
RFD 1 - PO BOX 127E
E HAMPTON CT 06424

13PA1008089 1 1C01CY1FB11M1
CONSEJO DE SEGURIDAD NUCLEAR
BIBLIOTECA CSN
JACOBO DIAZ DIAZ
ADMINISTRATOR
C/JUSTO JORADO NO.11
28040 MADRID SPAIN

106801091455 1 1C01CY1FB11M1
CONSOLIDATED CONTROLS CORP
FRANK BUTLER
COMM N OC ENGINEER
15 DURANT AVE
BETHEL CT 06801

110511109498 1 1C01CY1FB11M1
CONSOLIDATED EDISON CO OF NY
REGULATORY AFFAIRS
MANAGER
BROADWAY & BLEAKLEY AVENUES
BUCHANAN NY 10511

110511079130 1 1C01CY1FB11M1
CONSOLIDATED EDISON CO OF NY
INDIAN POINT NPS
MICHAEL BLATT
TECHNICAL CONSULTANT, NUCL POW
BROADWAY & BLEAKLEY AVE
BUCHANAN NY 10511

110003139737 1 1C01CY1FB11M1
CONSOLIDATED EDISON CO OF NY
BRENT L BRANQENBURG
ASSISTANT GENERAL COUNSEL
4 IRVING PLACE
NEW YORK NY 10003

110003109497 1 1C01CY1FB11M1
CONSOLIDATED EDISON CO OF NY
NFSC
WALTER STEIN
SECRETARY
4 IRVING PLACE- 1822
NEW YORK NY 10003

135209143002 1 1C01CY1FB11M1
CONSOLIDATED POWER SUPPLY CO
ALAN MCCONNELL
201 BEACON PARKWAY WEST
STE 315
BIRMINGHAM AL 35209

149043080491 1 1C01CY1FB11M1
CONSUMERS POWER CO
PALISADES YPS
PLANT MANAGER
COVERT MI 49043

149201005712 1 1C01CY1FB11M1
CONSUMERS POWER CO
LIBRARY SERVICES
CATHERINE A SMITH
1945 W PARNALL RD
P11-043
JACKSON MI 49201

149201139814 1 1C01CY1FB11M1
CONSUMERS POWER CO
JUDD L BACON
212 WEST MICHIGAN AVE
JACKSON MI 49201

14920081510 1 1C01CY1FB11M1
CONSUMERS POWER CO
BIG ROCK POINT NPS
WILLIAM BECKMAN
PLANT MANAGER
10267 US 31 NORTH
CHARLEVOIX MI 49720

149201057077 1 1C01CY1FB11M1
CONSUMERS POWER CO
A J BIRKLE
1945 W PARNALL ROAD
JACKSON MI 49201

149201105346 1 1C01CY1FB11M1
CONSUMERS POWER CO
NUCLEAR OPERATIONS
DAVID P HOFFMAN
VICE PRESIDENT
212 W MICHIGAN AVE
JACKSON MI 49201

149043139810 1 1C01CY1FB11M1
CONSUMERS POWER CO
PALISADES PLANT
CHARLES S KOZUP
TECHNICAL ENGINEER
27780 BLUE STAR MEMORIAL HWY
COVERT MI 49043

149201130815 1 1C01CY1FB11M1
CONSUMERS POWER CO
THOMAS A MCNISH
SECRETARY
212 WEST MICHIGAN AVE
JACKSON MI 49201

192688126628 1 1C01CY1FB11M1
CONTROL COMPONENTS INC
ROBERT E TOPPING
DIRECTOR QUALITY ASSURANCE
22591 AVENIDA EMPRESA
SANTA MARGARITA CA 92688

155440091457 1 1C01CY1FB11M1
CONTROL DATA CORP
ENERGY MGMT
LYNDA G GOODWIN
PO BOX 8
PLYMOUTH
MINNEAPOLIS MN 55440

120809141414 1 1C01CY1FB11M1
CONTROL DATA CORP
NET CORP
R C KERN
PRESIDENT
9 BANNISTER CT
GAITHERSBURG MD 20809

105108052979 1 1C01CY1FB11M1
CONTROMATICS
CHARLES R WESTON
QUALITY ASSURANCE MANAGER
222 ROBERTS ST
EAST HARTFORD CT 06108

116127138490 1 1C01CY1FB11M1
COOPER INDUSTRIES
QUALITY CONTROL
W H A LAMBERT
MANAGER
LINCOLN AVE
GROVE CITY PA 16127

177001130565 1 1C01CY1FB11M1
COOPER INDUSTRIES INC
FLOW CONTROL DIV
R V HOPKINS
MSR-INDUSTRY AFFAIRS
PO BOX 2117
HOUSTON TX 77001

177252103596 1 1C01CY1FB11M1
COOPER INDUSTRIES INC
FLOW CONTROL DIV
OTIS MCCRANIE
SUPERVISOR-QUALITY CONTROL
PO BOX 2117
HOUSTON TX 77252

143050052981 1 1C01CY1FB11M1
COOPER INDUSTRIES INC
COOPER ENERGY SERVICES
G W MIZER
TECH SERV AND QA MANAGER
NORTH SANDUSKY STREET
MT VERNON OH 43050

116423091461 1 1C01CY1FB11M1
COPEES VULCAN
JIM SCARPELLI
QC MANAGER
MARTIN & RICE AVE
LAKE CITY PA 15423

144077139864 1 1C01CY1FB11M1
COUNTY OF LAKE
DALE KONDAS
ASSISTANT PROSECUTING ATTORNEY
105 MAIN ST
PAINESVILLE OH 44077

168008139834 1 1C01CY1FB11M1
COUNTY OF WASHINGTON
BOARD OF SUPERVISORS
JOHN LUTZ
CHAIRMAN
COURTHOUSE-15TH & COLFEX ST
BLAIR NE 68308

185282193851 1 1C01CY1FB11M1
CREE
MYRON SCOTT
EXECUTIVE DIRECTOR
315 W RIVIERA DR
TEMPE AZ 85282

102093052986 1 1C01CY1FB11M1
CROSBY VALVE & GAGE CO
W D GREENLAW
43 KENDRICK ST
WRENTHAM MA 02093

130117091443 1 1C01CY1FB11M1
CRUCIBLE MATERIALS CORP
TRENCH TUBE DIVISION
JACK L WEHLE
QA MANAGER
141 HAMMONDS ST
CARROLLTON GA 30117

154602143599 1 1C01CY1FB11M1
DAIRYLAND POWER COOPERATIVE
WILLIAM L BERG
GENERAL MANAGER
3200 EAST AVENUE SOUTH
LA CROSSE WI 54602

122021106393 1 1C01CY1FB11M1
DARELL BEVIS ASSOCIATES INC
19640 FLINT LEE RD STE D
CHANTILLY VA 22021

119903139767 1 1C01CY1FB11M1
DELAWARE DEPT OF NATL RESOURCE
LEGAL OFFICE
89 KINGS HWY PO BOX 1401
DOVER DE 19903

119899003040 1 1C01CY1FB11M1
DELMARVA POWER & LIGHT CO
PRODUCTION SERVICES
JACK UPHAM
GENERAL MANAGER
PO BOX 231 800 KING ST
WILMINGTON DE 19899

116923052982 1 1C01CY1FB11M1
COPEES VULCAN
C J QUIRK
ADV MANAGER
POST OFFICE BOX 577
LAKE CITY PA 16423

155066139820 1 1C01CY1FB11M1
COUNTY OF GOODHUE
EMERGENCY MANAGEMENT
GARY A FRIED
DIRECTOR
520 W 6TH ST
RED WING MN 55066

143452139800 1 1C01CY1FB11M1
COUNTY OF OTTAWA
EMERGENCY MANAGEMENT
DIRECTOR
315 MADISON ST ANNEX BASEMENT
PORT CLINTON OH 43452

160441110273 1 1C01CY1FB11M1
CRANE-ALOYCO INC
GARRETT PETROVICH
QA MANAGER
719 N PARKWOOD
ROMEOVILLE IL 60441

102093091466 1 1C01CY1FB11M1
CROSBY VALVE & GAGE CO
JOSEPH GREENE
QA MANAGER
43 KENDRICK ST
WRENTHAM MA 02093

1FINLA054852 1 1C01CY1FB11M1
CRT FOR RAD & NUC SAF
DEPT OF NUCLEAR SAFETY
EUROLA TAPIO
ADMINISTRATOR
PO BOX 258
SF-00101 HELSINKI FINLAND

103874091470 1 1C01CY1FB11M1
D R O'BRIEN INC
H P HILBERG
MGR, PRODUCT APPLICATIONS
ONE CHASE PARK, PO BOX 159
PO BOX 159
SEABROOK NH 03874

154632080467 1 1C01CY1FB11M1
DAIRYLAND POWER COOPERATIVE
LACROSSE NPS
JOHN PARKYN
PLANT MANAGER
PO BOX 275
GENEA WI 54632

129532937275 1 1C01CY1FB11M1
DARLINGTON COUNTY
EMERGENCY PREPAREDNESS
JAMES P MCKELVEY
DIRECTOR
P O BOX 444
DARLINGTON SC 29532

119903036537 1 1C01CY1FB11M1
DELAWARE DEPT OF NATL RESOURCE
WATER RESOURCE
HARRY OTTO
TECHNICAL SERVICES SECTION
89 KINGS HWY PO BOX 1401
DOVER DE 19903

199811011192 1 1C01CY1FB11M1
DEPT ENVIR CONSERVATION
COMMISSIONER'S OFFICE
JOHN A SANDOR
COMMISSIONER
PO BOX 0
JUNEAU AK 99811

135628111240 1 1C01CY1FB11M1
DEPT OF ARMY
SAHEM - D
FULLER/ PAGE
EMERGENCY MANAGER
PO BOX 2288- MOBILE DISTRICT
MOBILE AL 36628

108625143031 1 1C01CY1FB11M1
DEPT OF ENVIRON PROTECTION
DR. JILL LIPOTTI
CN 402
TRENTON NJ 08625

106106110306 1 1C01CY1FB11M1
DEPT OF ENVIRON PROTECTION
RADIATION/NOISE CONTROL
KEVIN MCCARTHY
DIRECTOR
165 CAPITOL AVE
HARTFORD CT 06106

108625109493 1 1C01CY1FB11M1
DEPT OF ENVIRON PROTECTION
SCOTT A WEINER
COMMISSIONER
PO BOX CN-402
TRENTON NJ 08625

168509091841 1 1C01CY1FB11M1
DEPT OF ENVIRONMENTAL CONTROL
THOMAS LAMBERSON
BOX 98922-STATE HOUSE STATION
LINCOLN NE 68509

195827141632 1 1C01CY1FB11M1
DEPT OF GENERAL SERVICES
EMERGENCY OPERATIONS
CAROLE HOPWOOD
EMERGENCY OPERATIONS COORD
3284 RAMOS CIRCLE
SACRAMENTO CA 95827

195814142995 1 1C01CY1FB11M1
DEPT OF HEALTH SERVICES
RADIOLOGICAL HEALTH BRANCH
ED BAILEY
CHIEF
1232 G ST
SACRAMENTO CA 95814

140621093738 1 1C01CY1FB11M1
DEPT OF HEALTH SERVICES
RADIATION CONTROL BRANCH
DONALD R HUGHES
MANAGER
275 E MAIN ST
FRANKFORT KY 40621

195814012056 1 1C01CY1FB11M1
DEPT OF HEALTH SERVICES
ENVIRONMENTAL HEALTH
DON J WAMELOORE
714 P STREET
ROOM 615
SACRAMENTO CA 95814

102111142233 1 1C01CY1FB11M1
DEPT OF PUBLIC HEALTH
ROBERT M HALLISEY
150 TREMONT ST
BOSTON MA 02111

148166090532 1 1C01CY1FB11M1
DETROIT EDISON CO
ENRICO FERMI 2 NPS
PLANT MANAGER
6400 NORTH DIXIE HIGHWAY
NEWPORT MI 48166

148166101364 1 1C01CY1FB11M1
DETROIT EDISON CO
NOC INFORMATION CENTER
116 EF2 NOC
16DEF2 NOC
NEWPORT MI 48166

148166101365 1 1C01CY1FB11M1
DETROIT EDISON CO
PRODUCTION INFO CENTER
6400 N DIXIE HWY
104EF2 OSH
NEWPORT MI 48166

148166081083 1 1C01CY1FB11M1
DETROIT EDISON CO
NUCLEAR OPERATIONS TRAINING
LARRY BAUMGART
6400 N DIXIE HWY
312 NOC
NEWPORT MI 48166

148166103679 1 1C01CY1FB11M1
DETROIT EDISON CO
NUCLEAR SERVICES
HANS ERNER
6400 N DIXIE HWY
130 NOC
NEWPORT MI 48166

148166140059 1 1C01CY1FB11M1
DETROIT EDISON CO
LYNNE GOODMAN
DIRECTOR OF NUCLEAR LICENSING
6400 N DIXIE HWY
342EF2NOC
NEWPORT MI 48166

148166103375 1 1C01CY1FB11M1
DETROIT EDISON CO
FERMI 2
WILLIAM V LIPTON
6400 N DIXIE HWY
250418
NEWPORT MI 48166

148166140060 1 1C01CY1FB11M1
DETROIT EDISON CO
B. RALPH SYLVIA
SENIOR VICE PRESIDENT
6400 N DIXIE HWY
NEWPORT MI 48166

135806105946 1 1C01CY1FB11M1
DIGITAL ENGINEERING
TOM HANCOCK
658 DISCOVERY DRIVE
MONTVILLE AL 35806

148083104389 1 1C01CY1FB11M1
DOOR-MAN MANUFACTURING CO
DOOR-MAN MFG CO
ANDREW P JOHNSON JR
PRESIDENT
3291 ELLIOTT
TROY MI 48063

148674107557 1 1C01CY1FB11M1
DOW CHEMICAL CO
RESEARCH CENTER
RADIATION SAFETY OFFICER
1803 BLDG H & ES/1H
MIDLAND MI 48674

148674139241 1 1C01CY1FB11M1
DOW CHEMICAL CO
ANALYTICAL LABARCH REACTOR
C W KOCHER
REACTOR SUPERVISOR
1602 BUILDING
MIDLAND MI 48674

190650052991 1 IC01CY1FB11M1
DRAGON VALVES INC
ROBERT F BOND
VICE PRESIDENT
PO BOX 489
NORWALK CA 90650

171309142239 1 IC01CY1FB11M1
DRESSER INDUSTRIAL VALVE
GAE, SYSTEMS & AUDITS
R R THOMAS
PO BOX 1430
ALEXANDRIA LA 71309

190255091622 1 IC01CY1FB11M1
DRESSER INDUSTRIES INC
DRESSER PUMP DIV
D J ROYER
QA MANAGER
5715 RICKETT ST
HUNTINGTON PARK CA 90255

114895137150 1 IC01CY1FB11M1
DRESSER-RAND
TURBINE MOTOR GENERATOR
MICHAEL SCHMIEDEL
SUPV OF QUALITY ENGR
37 COATS ST
WELLSVILLE NY 14895

106001093754 1 IC01CY1FB11M1
DUFRANE ASSOC
K H DUFRANE
PRESIDENT
7 HOLLY LANE
AVON CT 06601

129679103319 1 IC01CY1FB11M1
DUKE POWER CO
OCONEE 1 NPS
PLANT MANAGER
SENECA SC 29679

128242091030 1 IC01CY1FB11M1
DUKE POWER CO
A V CARR, ESQ.
ASSOCIATE GENERAL COUNSEL
422 SOUTH CHURCH ST
CHARLOTTE NC 28242

128242144008 1 IC01CY1FB11M1
DUKE POWER CO
NUCLEAR PRODUCTION DEPT
KAY CRANE
PO BOX 1007
CHARLOTTE NC 28242

128242006327 1 IC01CY1FB11M1
DUKE POWER CO
CMD-NORTH
A R HOLLINS
DIVISION MANAGER
PO BOX 3318
CHARLOTTE NC 28242

128159142679 1 IC01CY1FB11M1
DUKE POWER CO
CMD-NORTH
C H RICHARDS
CRAFT MANAGER
PO BOX 27 DOKEVILLE RD
SPENCER NC 28159

115077080571 1 IC01CY1FB11M1
DUQUESNE LIGHT CO
BEAVER VALLEY 1 NPS
GENERAL MGR NUCLEAR OPERATIONS
PO BOX 4
SHIPPINGPORT PA 15077

145750081801 1 IC01CY1FB11M1
DRAVO CORP
CONNEX PIPE SYSTEMS
THOMAS R SMITH
RADIATION SAFETY OFFICER
1115 GILMAN ST
MARIETTA OH 45750

102322106424 1 IC01CY1FB11M1
DRESSER INDUSTRIES INC
MASONIELAN DIV
ERNEST W KRAMER
NUCLEAR ENGINEER
85 BODWELL ST
AVON MA 02322

114895139672 1 IC01CY1FB11M1
DRESSER-RAND
STEAM TURBINE, MOTOR & GEN DIV
JOSEPH MENICHINO
NUCLEAR PRODUCT ENGINEER
37 COATS ST
WELLSVILLE NY 14895

128382104494 1 IC01CY1FB11M1
DUBOSE STEEL INC
JAMES BAILEY
QA MANAGER
PO BOX 1098
ROSEBORO NC 28382

129679104339 1 IC01CY1FB11M1
DUKE POWER CO
OCONEE TRAINING CENTER
PO BOX 1436
SENECA SC 29679

128242137594 1 IC01CY1FB11M1
DUKE POWER CO
QUALITY ASSURANCE DEPT
QA MANAGER
PO BOX 3318
CHARLOTTE NC 28242

129710080556 1 IC01CY1FB11M1
DUKE POWER CO
CONST & MAINT DEPT CTRL DIV
E M COUCH
DIVISION MANAGER
PO BOX 223
CLOVER SC 29710

129679106312 4 IC01CY1FB11M1
DUKE POWER CO
OCONEE NUCLEAR STATION
I D CURTIS
COMPLIANCE MANAGER
P O BOX 1439
SENECA SC 29679

129710080555 1 IC01CY1FB11M1
DUKE POWER CO
CATAWBA 1 NPS
I B OWEN
STATION MANAGER
PO BOX 256
CLOVER SC 29710

128078140702 2 IC01CY1FB11M1
DUKE POWER CO
NUCLEAR PRODUCTION DEPT
ROBERT SHARPE
COMPLIANCE MANAGER
12700 HAGERS FERRY RD
HUNTERSVILLE NC 28078

115077091833 1 IC01CY1FB11M1
DUQUESNE LIGHT CO
BVP5-2
DOCUMENT CONTROL SUPERVISOR
PO BOX 4
SHIPPINGPORT PA 15077

115279138719 1 1C01CY1FB11M1
DUQUESNE LIGHT CO
EXECUTIVE VICE PRESIDENT
JOHN J. CAREY
OPERATIONS
301 GRANT ST-ONE OXFORD ST
PITTSBURGH PA 15279

115077141380 1 1C01CY1FB11M1
DUQUESNE LIGHT CO
NUCLEAR GROUP
S C FENNER
PO BOX 4
BV-QA
SHIPPINGPORT PA 15077

115077107138 1 1C01CY1FB11M1
DUQUESNE LIGHT CO
NUCLEAR GROUP
J J SIEHER
VICE PRESIDENT
PO BOX 4
SHIPPINGPORT PA 15077

115077106764 1 1C01CY1FB11M1
DUQUESNE LIGHT CO
BEAVER VALLEY PC
DAVID B SZUCS
SR ENGR NUCLEAR SAFETY DEPT
PO BOX 4
SHIPPINGPORT PA 15077

115077137529 1 1C01CY1FB11M1
DUQUESNE LIGHT CO
NUCLEAR GROUP
NELSON R TONET
PO BOX 4
BV-A
SHIPPINGPORT PA 15077

108543137293 1 1C01CY1FB11M1
E R SQUIBB & SONS INC
RADIOPHARMACEUTICAL
CHARLES F BOYLE
TRANSPORTATION SUB ADM
CN 5200
PRINCETON NJ 08543

106801140944 1 1C01CY1FB11M1
FATON CORP
POWER INDUSTRY CONTROLS
GEORGE GARRITY
MANAGER
15 DURANT AVE
BETHEL CT 06801

110041139572 1 1C01CY1FB11M1
ERASCO SERVICES INC
NUCLEAR LICENSING
EDWARD J BORELLA
CHIEF ENGINEER
TWO WORLD TRADE CENTER
NEW YORK NY 10048

110048091486 1 1C01CY1FB11M1
ERASCO SERVICES INC
CORPORATE QUALITY PROGRAMS
B R MAZO
VICE PRESIDENT
2 WORLD TRADE CENTER
NEW YORK NY 10048

170057142088 1 1C01CY1FB11M1
ERASCO SERVICES INC
C RASNIC
PO BOX 620
SUITE 200
HANNVILLE LA 70057

187504139414 1 1C01CY1FB11M1
HERLINE INSTRUMENT CORP
ROBERT GRAY
SALES MANAGER
PO BOX 2108
SANTA FE NM 87504

115077079396 1 1C01CY1FB11M1
DUQUESNE LIGHT CO
NUCLEAR GROUP
S C FENNER
PO BOX 4
BV-QA
SHIPPINGPORT PA 15077

115077080919 1 1C01CY1FB11M1
DUQUESNE LIGHT CO
S LACEY
GENERAL MGR, NUCLEAR OPERATIONS
PO BOX 4
SHIPPINGPORT PA 15077

115077103194 1 1C01CY1FB11M1
DUQUESNE LIGHT CO
T A SOCKACI
SUPERVISOR
PO BOX 321
SHIPPINGPORT PA 15077

115077179148 1 1C01CY1FB11M1
DUQUESNE LIGHT CO
CORP NUCLEAR SERVICES UNIT
N R TONET
MANAGE NCO
PO BOX 321
SHIPPINGPORT PA 15077

103824094151 1 1C01CY1FB11M1
DURHAM BOARD OF SELECTMEN
TOWN OF DURHAM
OWEN B DURGIN
CHAIRMAN
DURHAM NH 03824

102893142966 1 1C01CY1FB11M1
EAS ENERGY SERVICES
ROBERT J MASTERSON
VICE PRESIDENT
207 QUAKER LANE
WEST WARWICK RI 02893

199352106166 1 1C01CY1FB11M1
ERASCO SERVICES INC
PHILIP BARTLEY
CIH
1201 JADWIN AVENUE
SUITE 202
RICHLAND WA 99352

107071140120 1 1C01CY1FB11M1
ERASCO SERVICES INC
FIELD ENGINEERING
ROBERT A KEILBACH
MANAGER
210 CLAY AVENUE
LYNDHURST NJ 07071

130092026013 1 1C01CY1FB11M1
ERASCO SERVICES INC
JAMES C O'HARA
CONSULTING ENGINEER
145 TECHNOLOGY PARK/ATLANTA
NORCROSS GA 30092

107071141029 1 1C01CY1FB11M1
ERASCO SERVICES INC
QUALITY ASSURANCE
K G ROWLAND
210 CLAY AVE
BETH FL
LYNDHURST NJ 07071

115219022945 1 1C01CY1FB11M1
ECKER SEAMANS CHERIN MELLOTT
BARTON Z COWAN
600 GRANT STREET
4TH FLOOR
PITTSBURGH PA 15219

108736142815 1 1C01CY1FB11M1
ECOTECH/RAM-3 INDUSTRIES
LAWRENCE P. GRADIN
PRESIDENT
2411 ATLANTIC AVE #4
MANASQUAN NJ 08736

120555137425 1 1C01CY1FB11M1
EG&G
VICTOR SHAM
007 N/L
WASHINGTON DC 20555

183415102911 1 1C01CY1FB11M1
EG&G IDAHO INC
INEL TECH LIBRARY
PO BOX 1625
2300
IDAHO FALLS ID 83415

183415109908 1 1C01CY1FB11M1
EG&G IDAHO INC
ED ANDERSON
P O BOX 1625
2514
IDAHO FALLS ID 83415

183415142404 1 1C01CY1FB11M1
EG&G IDAHO INC
GERALD D BARANICK
PO BOX 1625
MS 3584
IDAHO FALLS ID 83415

183402140077 1 1C01CY1FB11M1
EG&G IDAHO INC
FACILITIES & MAINTENANCE DEPT
W A BAXTER
PO BOX 1625
MS 4115
IDAHO FALLS ID 83402

183415091946 1 1C01CY1FB11M1
EG&G IDAHO INC
PROGRAMS RISK ADVISORY CMT
J CURTIS HAIRE
CHAIRMAN
PO BOX 1625
IDAHO FALLS ID 83415

183415137692 1 1C01CY1FB11M1
EG&G IDAHO INC
RWMC/SWEEP LESSONS LEARNED
W J ISLE
PO BOX 1625 M/S 4201
9208
IDAHO FALLS ID 83415

183415143032 1 1C01CY1FB11M1
EG&G IDAHO INC
MARK RULIN
PO BOX 1625
IDAHO FALLS ID 83415

183415066803 1 1C01CY1FB11M1
EG&G IDAHO INC
J SINGH
PO BOX 1625
IDAHO FALLS ID 83415

183415062748 1 1C01CY1FB11M1
EG&G IDAHO INC
REQUIREMENT & SYSTEMS
M S VARGO
PO BOX 1625
4107
IDAHO FALLS ID 83415

135806142324 1 1C01CY1FB11M1
EGS CORP INTL
KARRARA JENKINS
OFFICE MANAGER
150 WEST PARK LOOP
SUITE 301
HUNTSVILLE AL 35806

135806142291 1 1C01CY1FB11M1
EGS CORP INTL
FREDRICK L ROY
SR PROGRAM MANAGER
150 WEST PARK LOOP
STE 301
HUNTSVILLE AL 35806

15WIT2057566 1 1C01CY1FB11M1
EIDG AMT FUR ENERGIEWIRTSCHAFT
NUCLEAR SAFETY DIVISION
ROLAND NAEGELIN
ADMINISTRATOR
5303 WUERENLINGEN SWITZERLA

194303141968 1 1C01CY1FB11M1
ELECTRIC POWER RESEARCH INST
GEORGE HOCKING
PO BOX 10411
PALO ALTO CA 94303

194303138065 1 1C01CY1FB11M1
ELECTRIC POWER RESEARCH INST
ENGINEER & OPERATIONS DEPT
J. B BYRON
PROJECT MANAGER
P.O. BOX 10412
PALO ALTO CA 94303

194303064766 1 1C01CY1FB11M1
ELECTRIC POWER RESEARCH INST
NUCLEAR POWER
NANCY F HALL
DATA CONTROL CLERK
3412 HILLVIEW AVE PO BOX 10412
PALO ALTO CA 94303

120008000334 1 1C01CY1FB11M1
EMBASSY OF GREAT BRITAIN
SCIENCE & TECHNOLOGY
EDGAR LUCAS
PUBLICATION OFFICER
3100 MASSACHUSETTS AVE NW
WASHINGTON DC 20008

120008137966 1 1C01CY1FB11M1
EMBASSY OF JAPAN
SCIENCE SECTION
TAKAO KYRANOCHI
FIRST SECRETARY
2520 MASSACHUSETTS AVE NW
WASHINGTON DC 20008

120006093383 1 1C01CY1FB11M1
ENEA
TERNA/VADEC CASACCIA
ENZO PANASIA
818 19TH ST NW
SUITE 500
WASHINGTON DC 20006

111ALY008074 1 1C01CY1FB11M1
ENEA-DISP
DIV OF EXTERNAL RELATIONS
VANNI PICCO
ADMINISTRATOR
VIA VITALIANO BRANCATI 40
00144 ROME ITALY

101701141285 1 1C01CY1FB11M1
ENR PLANNING & MGMT INC
ENGINEERING SVCS ADMIN
JOANNE HAYES
959 CONCORD ST
FRAMINGHAM MA 01701

1SPAIN107535 1 1C01CY1FB11M1
ENRESA
EMPRESA NACIONAL DE RESIDUOS
PEDRO C MARTINEZ
RADIOACTIVOS
PASEO DE LA CASTELLANA 135
28046 MADRID SPAIN

170066143320 1 1C01CY1FB11M1
ENERGY OPERATIONS INC
NUCLEAR SAFETY
R F BURSKI
DIRECTOR
PO BOX B - WATERFORD
KILLONA LA 70066

139150140520 1 1C01CY1FB11M1
ENERGY OPERATIONS INC
C R HUTCHINSON
GGNS GENERAL MANAGER
PO BOX 756
PORT GIBSON MS 39150

116863106477 1 1C01CY1FB11M1
ENVIRON COALITION ON NUC POWER
JUDITH JOHNSRUD
433 ORLANDO AVE
STATE COLLEGE PA 16803

194596142449 1 1C01CY1FB11M1
ERIN ENGINEERING
LARRY BENNETT
2175 V CALIFORNIA BLVD
SUITE 625
WALNUT CREEK CA 94596

119601139120 1 1C01CY1FB11M1
EXIDE CORP
INDUSTRIAL
ROBERT V HIGHT
QUALITY ASSURANCE ENGINEER
645 PENN STREET
READING PR 19601

102062113543 1 1C01CY1FB11M1
FACTORY MUTUAL RESEARCH CORP
PAUL H DOJSON
SENIOR ENGINEER
1151 BOSTON-PROVIDENCE TPKE
NORWOOD MA 02062

192069137015 1 1C01CY1FB11M1
FCI
MALCOLM W MCQUEEN
PRESIDENT
1755 LACOSTA MEADOWS DR
SAN MARCOS CA 92069

150158091507 1 1C01CY1FB11M1
FISHER CONTROL INTERNATIONAL
CHARLES COOVELL
MANAGER PROJECT PLANNING
205 S CENTER ST
MARSHALLTOWN IA 50158

132399111024 3 1C01CY1FB11M1
FLORIDA DEPT OF HLTH & REHAB
OFFICE OF RADIATION CONTROL
JACOB D NASH
PUBLIC HEALTH PHYSICIST MGR
1317 WINEWOOD BLVD
TALLAHASSEE FL 32399

134954142169 1 1C01CY1FB11M1
FLORIDA POWER & LIGHT CO
NUCLEAR ENERGY
PLANT MANAGER
PO BOX 138
FORT PIERCE FL 34954

170066143557 1 1C01CY1FB11M1
ENERGY INC
WATERFORD 3
RAYMOND F BURSKI
PO BOX B
L-753
KILLONA LA 70066

139150141917 1 1C01CY1FB11M1
ENERGY OPERATIONS INC
NUCLEAR LICENSING
JOHN G CESARE
DIRECTOR
PO BOX 756
PORT GIBSON MS 39150

133334143567 1 1C01CY1FB11M1
ENVIR CONSULTING & TECH INC
MICHAEL DUVALL
PROJECT MANAGER
6300 NE FIRST AVENUE
STE 100
FT LAUDERDALE FL 33334

194105143984 1 1C01CY1FB11M1
EGE ENGINEERING
CHEREE ANDERSON
QUALITY ASSURANCE CLERK
595 MARKET ST
18TH FLR
SAN FRANCISCO CA 94105

1SAF31057401 1 1C01CY1FB11M1
ESCOM CORP
LIBRARY
L VAN RENSBURG
LIBRARIAN
PO BOX 1091
JOHANNESBURG 2060 SAFRICA

119612138732 1 1C01CY1FB11M1
EXIDE CORP
C H REICHART
CONTRACT ADMINISTRATOR
PO BOX 14205
READING PA 19612

145150137302 1 1C01CY1FB11M1
FARWELL & HENDRICKS INC
MAX E LILLY
QA MANAGER
1000 FORD CIRCLE - SUITE C
MILFORD OH 45150

150158091507 1 1C01CY1FB11M1
FISHER CONTROLS INTERNATIONAL
FINAL CONTROL SYSTEMS
DAN BUTTON
QA MANAGER
205 S CENTER ST PO BOX 190
MARSHALLTOWN IA 50158

1501580921209 1 1C01CY1FB11M1
FISHER CONTROLS INTERNATIONAL
FLOYD D JURY
NUCLEAR TECH MANAGER
PO BOX 11
MARSHALLTOWN IA 50158

132301139792 1 1C01CY1FB11M1
FLORIDA OFFICE OF PUBL COUNSEL
JACK SHREVE
HOLLAND BLDG
RM 3
TALLAHASSEE FL 32301

133457080593 1 1C01CY1FB11M1
FLORIDA POWER & LIGHT CO
ST LUCIE 1 NPS
PLANT MANAGER
JENSEN BEACH FL 33457

133102105878 1 1C01CY1FB11M1
FLORIDA POWER & LIGHT CO
TURKEY POINT N
PLANT MANAGER N
PO BOX 029100 PTN
MIAMI FL 33102

133102080592 1 1C01CY1FB11M1
FLORIDA POWER & LIGHT CO
TURKEY POINT NUCLEAR
J E CROSS
PLANT MGR N
PO BOX 029100 PTN
MIAMI FL 33102

133408081117 1 1C01CY1FB11M1
FLORIDA POWER & LIGHT CO
NUCLEAR LICENSING
J A DEMASTRY
STAFF ENGINEER
PO BOX 14000
JUNO BEACH FL 33408

133408140916 1 1C01CY1FB11M1
FLORIDA POWER & LIGHT CO
NUCLEAR DIVISION
J H GOLDBERG
PRESIDENT
P.O. BOX 14000
JUNO BEACH FL 33408

133484064618 1 1C01CY1FB11M1
FLORIDA POWER & LIGHT CO
ST LUCIE PLANT
G KOZLOWSKI
PO BOX 128
PSL-1 OC
FT PIERCE FL 33454

133402106373 1 1C01CY1FB11M1
FLORIDA POWER & LIGHT CO
CORP RECORDS SVCS DEPT
JACK P LEWIS
CORP RECORDS ADMINISTRATOR
3350 NORTHLAKE BLVD DRW D
WEST PALM BEACH FL 33402

133102103477 1 1C01CY1FB11M1
FLORIDA POWER & LIGHT CO
K N YORK
DOCUMENT CONTROL SUPVR
PO BOX 029100
MIAMI FL 33102

133733139794 1 1C01CY1FB11M1
FLORIDA POWER CORP
LEGAL DEPT
PO BOX 14942
ST PETERSBURG FL 33733

132629081356 1 1C01CY1FB11M1
FLORIDA POWER CORP
NUCLEAR OPERATIONS
PAUL F MCKEE
DIRECTOR NUC PLANT OPERATIONS
PO BOX 219-NA-2C
CRYSTAL RIVER FL 32629

132629141863 1 1C01CY1FB11M1
FLORIDA POWER CORP
NUCLEAR OPERATIONS
WALTER S WILGUS
VICE PRESIDENT
PO BOX 219-NA-2I
CRYSTAL RIVER FL 32629

116107103177 1 1C01CY1FB11M1
FLOWLINE CORP
RUTLER AVENUE EXTENSION
R E JOHNSON
QA MANAGER
PO BOX 7027
NEW CASTLE PA 16107

129615139000 1 1C01CY1FB11M1
FLUOR CONSTRUCTORS INC
POWER DIVISION
150 EXECUTIVE CTR GR-KOGEN CTR
SUITE B40
GREENVILLE SC 29615

129607143489 1 1C01CY1FB11M1
FLUOR DANIEL
JOHN P MADISON RSO
100 FLUOR DANIEL DRIVE
C301F
GREENVILLE SC 29607

160606008712 1 1C01CY1FB11M1
FLUOR DANIEL
POWER SECTOR CHICAGO OFFICE
GEORGE V SCHWAB
SENIOR ENGR
200 W MONROE ST
CHICAGO IL 60606

160606137872 1 1C01CY1FB11M1
FLUOR DANIEL
CHICAGO DIV
J SEABERG
LIBRARIAN
200 WEST MONROE ST
CHICAGO IL 60606

192730139896 1 1C01CY1FB11M1
FLUOR DANIEL INC
ANGIE RUST
3333 MICHELSON DR
512A
IRVINE CA 92730

192730139702 1 1C01CY1FB11M1
FLUOR DANIEL INC
IRVINE TECHNICAL LIB-L40
FIA VITAR
HEAD LIBRARIAN
3333 MICHELSON DR
IRVINE CA 92730

144202091484 1 1C01CY1FB11M1
FLUOROCARBON CO
DEKORON DIV
KELLY A KINNETT
QA-MANAGER
1199 S CHILLICOTHE RD
AUBORA OH 44202

175001083310 1 1C01CY1FB11M1
FORNE ENGINEERING CO
QUALITY ASSURANCE
WAYNE W PASTER
MANAGER-QUALITY ASSURANCE
PO BOX 189
LADDISON TX 75001

1FRANC108925 1 1C01CY1FB11M1
FRAMATOME
MANAGER NUCLEAR SAFETY
10UR FIAT CEDEX 16
92084
PARIS LA DEFENSE FRANCE

122209108931 1 1C01CY1FB11M1
FRAMATOME
U S OPERATIONS
CHRISTIAN BUCHALET
1911 N ROBT RYER DRIVE
SUITE 804
ROSSLYN VA 22209

115146137863 1 1 1CY1FB11M1
FRAMATOME
PITTSBURGH EXPO MART
CLAUDIA GRANCHE
105 MALL BLVD-LEVEL 3, EAST
MONROEVILLE PA 15146

120004108468 1 1C01CY1FB11M1
FRIED FRANK HARRIS ET AL
MARC ROWDEN
PARTNER
1001 PENNSYLVANIA AVE NW
SUITE 800
WASHINGTON DC 20004

194598094189 1 1C01CY1FB11M1
G C SLAGIS ASSOCIATES
GERALD C SLAGIS
3520 ERIS COURT
WALNUT CREEK CA 94598

130309106841 1 1C01CY1FB11M1
GA DEPT OF NATURAL RESOURCES
ENVIRONMENTAL PROTECTION DIV
THOMAS E HILL
878 PEACHTREE ST
ROOM 600
ATLANTA GA 30309

128402001616 1 1C01CY1FB11M1
GE-NUCLEAR ENERGY
R FOLECK
SR SPEC LICENSING
PO BOX 783
J26
WILMINGTON NC 28402

192138142363 1 1C01CY1FB11M1
GENERAL ATOMIC
QUALITY SYSTEMS & DEFENSE QA
M G DUNLAP
MANAGER
PO BOX 85608
SAN DIEGO CA 92138

106355110616 1 1C01CY1FB11M1
GENERAL DYNAMICS SERVICE CO
HEALTH PHYSICS SERVICES
W ZURLIENC
SUPERVISOR
14 HOLMES ST-REACTOR PLANT SVC
MYSTIC CT 06355

128402080895 1 1C01CY1FB11M1
GENERAL ELECTRIC CO
WILMINGTON MANUFACTURING DEPT
GENERAL MANAGER
PO BOX 780
WILMINGTON NC 28402

119406110570 1 1C01CY1FB11M1
GENERAL ELECTRIC CO
QUALITY ASSURANCE
RICHARD E CAMEBON
NDE SPECIALIST
1000 FIRST AVE
KING OF PRUSSIA PA 19406

194566109525 1 1C01CY1FB11M1
GENERAL ELECTRIC CO
G E CUNNINGHAM
SENIOR LICENSING ENGINEER
PO BOX 460
PLEASANTON CA 94566

194566020460 1 1C01CY1FB11M1
GENERAL ELECTRIC CO
VALLECITOS NUCLEAR CENTER
R W DARMITZEL
PO BOX 460
PLEASANTON CA 94566

112545117394 1 1C01CY1FB11M1
GENERAL ELECTRIC CO
HEALTH PHYSICS
R W DICKINSON
SPECIALIST
BLOG 273 - RM 230
SCHENECTADY NY 12345

1BR421138698 1 1C01CY1FB11M1
FURNAS-CENTRAIS ELETRICAS S.A.
DIVISAO DE BIBLIOTECA
RUA REAL GRANDEZA,219 BLOCA B
SALA 203
E2283 RIO DE JANEIRO BRAZIL

177484091399 1 1C01CY1FB11M1
G H BETTIS
GALVESTON-HOUSTON CORP
A LUCASCIO
QA MANAGER
18703 G H CIRCLE PO BOX 508
WALLER TX 77484

199125065234 1 1C01CY1FB11M1
GE NUCLEAR ENERGY
L M SHAEFFER
175 CURTNER AVE
MS 682
SAN JOSE CA 95125

192138082216 1 1C01CY1FB11M1
GENERAL ATOMIC CO
LICENSING SAF & NUC COMP
KEITH E ASMUSSEN
MANAGER
PO BOX 85608
SAN DIEGO CA 92138

106340081359 1 1C01CY1FB11M1
GENERAL DYNAMICS CORP
ELECTRIC BOAT DIV
R F SAMMATARO
75 EASTERN POINT ROAD
D-478
GROTON CT 06340

194566107954 1 1C01CY1FB11M1
GENERAL ELECTRIC CO
VALLECITOS NUCLEAR CENTER
LICENSING ADMINISTRATOR
PO BOX 460
PLEASANTON CA 94566

152601053624 1 1C01CY1FB11M1
GENERAL ELECTRIC CO
SWITCHGEAR BUSINESS DEPARTMENT
DAVID I BRAZIER
MGR SWITCHGEAR OPERATION
AGENCY ROAD P O BOX 488
BURLINGTON IA 52601

195125064718 1 1C01CY1FB11M1
GENERAL ELECTRIC CO
NUCLEAR ENERGY
J M CASE
175 CURTNER AVE
562
SAN JOSE CA 95125

128402053028 1 1C01CY1FB11M1
GENERAL ELECTRIC CO
NUCLEAR FUEL & COMPONENTS MFG
J W CURRIER
PO BOX 780
A-32
WILMINGTON NC 28402

195125139892 1 1C01CY1FB11M1
GENERAL ELECTRIC CO
NUCLEAR ENGY BUSINESS SPS
C J DEACON
175 CURTNER AVE
MC834
SAN JOSE CA 95125

195125139853 1 1C01CY1FB11M1
GENERAL ELECTRIC CO
O-I FOREMAN
PROJECT MANAGER
175 CURTNER AVE/M/C 264
SAN JOSE CA 95125

120852138728 1 1C01CY1FB11M1
GENERAL ELECTRIC CO
L S GIFFORD
12300 TWINBROOK PKWY
SUITE 315
ROCKVILLE MD 20852

160521110534 1 1C01CY1FB11M1
GENERAL ELECTRIC CO
GERALD L HAYES
2311 WEST 22ND ST
SUITE 201
OAK BROOK IL 60521

160521110865 1 1C01CY1FB11M1
GENERAL ELECTRIC CO
RICHARD C HOOPER
MANAGER-INSPECTION SERVICES
2311 W 22 ST
#201
OAK BROOK IL 60521

160450062516 1 1C01CY1FB11M1
GENERAL ELECTRIC CO
MORRIS OPERATION
T E INGELS
PLANT MANAGER
7655 E COLLINS RD
MORRIS IL 60450

195125093385 1 1C01CY1FB11M1
GENERAL ELECTRIC CO
NUCLEAR ENERGY
ARNOLD KOSLOW
175 CURTNER AVE
M/C 263
SAN JOSE CA 95125

195125141966 1 1C01CY1FB11M1
GENERAL ELECTRIC CO
REG & ANALYSIS SERVICES
P W MARRIOTT
175 CURTNER AVENUE
M/C 382
SAN JOSE CA 95125

195125006033 1 1C01CY1FB11M1
GENERAL ELECTRIC CO
R C MITCHELL
MGR, NUCLEAR PRODUCT LICENSING
175 CURTNER AVE
M/C 187
SAN JOSE CA 95125

195125091521 1 1C01CY1FB11M1
GENERAL ELECTRIC CO
G E NUCLEAR ENERGY
J E MURRAY
175 CURTNER AVE
M/C 562
SAN JOSE CA 95125

119355063069 1 1C01CY1FB11M1
GENERAL ELECTRIC CO
METER & CONTROL BUSINESS
CASE SCOTT
205 GREAT VALLEY PKY
MD-1106
MALVERN PA 19355

195125091526 1 1C01CY1FB11M1
GENERAL ELECTRIC CO
NUCLEAR ENGY BUSINESS
NOEL SHIRLEY
175 CURTNER AVE
M/C 187
SAN JOSE CA 95125

195125006384 1 1C01CY1FB11M1
GENERAL ELECTRIC CO
NUCLEAR ENERGY DIVISION
JOHN M SKARPELOS
175 CURTNER AVENUE
MC-783
SAN JOSE CA 95125

161702103399 1 1C01CY1FB11M1
GENERAL ELECTRIC CO
CHARLES WETTER
PO BOX 2913
BLOOMINGTON IL 61702

160015140115 1 1C01CY1FB11M1
GENERAL ENERGY SYSTEMS CORP
M J MAY
2525 WAUKEGAN RD
SUITE 220
BANNOCKBURN IL 60015

160015138777 1 1C01CY1FB11M1
GENERAL ENERGY SYSTEMS CORP
MICHAEL J MAY
2525 WAUKEGAN ROAD
BANNOCKBURN IL 60015

121046139392 1 1C01CY1FB11M1
GENERAL PHYSICS CORP
TECHNICAL INFORMATION CENTER
N L KNIGHT
MANAGER
6700 ALEXANDER BELL DR
COLUMBIA MD 21046

106471103590 1 1C01CY1FB11M1
GENERAL RESISTANCE INC
INTERNATIONAL INSTRUMENTS
M J COPPOLA
QA MANAGER
TWIN LAKES RD PO BOX 185
N BRANFORD CT 06471

130332107955 1 1C01CY1FB11M1
GEORGIA INSTITUTE OF TECH
NUCLEAR RESEARCH CTR
RATIB A KARAM
900 ATLANTIC DR N. W.
0425
ATLANTA GA 30332

131513089543 1 1C01CY1FB11M1
GEORGIA POWER CO
PLANT E I HATCH
PLANT MANAGER
PO BOX 442
BAXLEY GA 31513

130830092719 1 1C01CY1FB11M1
GEORGIA POWER CO
NUCLEAR OPERATIONS
G BOCKHOOD
P O BOX 1600
POB 294-3
WAYNESBORO GA 30810

135201140686 1 1C01CY1FB11M1
GEORGIA POWER CO
PLANT HATL SUPPORT
DON M CROWE
PO BOX 1295
051
BIRMINGHAM AL 35201

131513080837 1 1C01CY1FB11M1
GEORGIA POWER CO
MASON
D M FRASER
SITE QA MANAGER
PO BOX 442
BAXLEY GA 31513

130830089903 1 1C01CY1FB11M1
GEORGIA POWER CO
QUALITY ASSURANCE
G R FREDERICK
QA SITE MANAGER
PO BOX 1600
WAYNESBORO GA 30830

135201141831 1 1C01CY1FB11M1
GEORGIA POWER CO
NUCLEAR-VOGTLE
C. K MCCOY
VICE-PRESIDENT
P.O. BOX 1295
BIRMINGHAM AL 35201

130334080966 1 1C01CY1FB11M1
GEORGIA PUBLIC SERVICE COM
UTILITIES DIV
B B KNOWLES
DIRECTOR OF UTILITIES
244 WASHINGTON ST SW
ATLANTA GA 30334

1WGERM092113 1 1C01CY1FB11M1
GESELLSCHAFT FUR REAKTORSICHE
E LINDAUER
GLOCKENGASSE 2
5000 COLOGNE 1 WGERMANY

191729057035 1 1C01CY1FB11M1
GIDEP OPERATIONS CTR
PROGRAM DIRECTOR
CORONA CA 91720

119603008708 1 1C01CY1FB11M1
GILBERT/COMMONWEALTH INC
DEBORAH M BOSLER
LIBRARIAN
PO BOX 1498
READING PA 19603

160148142186 1 1C01CY1FB11M1
GNB INDUSTRIAL BATTERY CO
WOODLAKE CORP PARK
DENNIS M FISCHER
DIRECTOR OF QUALITY ASSURANCE
829 PARKVIEW BLVD
LOMBARD IL 60148

103301080913 1 1C01CY1FB11M1
GOVERNORS OFC OF EMERG MGMT
STATE OFFICE PARK SOUTH
GEORGE L IVERSON
DIRECTOR
107 PLEASANT ST
CONCORD NH 03301

117057080586 1 1C01CY1FB11M1
GPU NUCLEAR
TMI 1 NPS
PLANT MANAGER
MIDDLETOWN PA 17057

117057091775 1 1C01CY1FB11M1
GPU NUCLEAR
TMI 2 LICENSING
JAMES J BYRNE
MANAGER TMI 2 LICENSING
PO BOX 480
MIDDLETOWN PA 17057

117057109902 1 1C01CY1FB11M1
GPU NUCLEAR
J E FREW
DEFUELING DIRECTOR
PO BOX 480 RT 441 S
MIDDLETOWN PA 17057

107054005790 1 1C01CY1FB11M1
GPU NUCLEAR CORP
LIBRARY
1 UPPER POND RD
PARSIPPANY NJ 07054

131513137490 1 1C01CY1FB11M1
GEORGIA POWER CO
PLANT E I HATCHONS
S B TIPPS
PO BOX 439
333/16
BAXLEY GA 31513

101890092714 1 1C01CY1FB11M1
GEOTECHNICAL ENGINEERS INC
STEVE J POULOS
PRESIDENT
1021 MAIN ST
WINCHESTER MA 01890

110001001194 1 1C01CY1FB11M1
GIBBS & HILL INC
LIBRARY
BARBARA SCHIOLA
11 PENN PLAZA
5TH FL
NEW YORK NY 10001

119603091532 1 1C01CY1FB11M1
GILBERT COMMONWEALTH
N R BARKER
VICE PRESIDENT
PO BOX 1498
READING PA 19603

119603007983 1 1C01CY1FB11M1
GILBERT/COMMONWEALTH INC
LIBRARY
B LE BOULCH
PO BOX 1498
READING PA 19603

113148000097 1 1C01CY1FB11M1
GOULDS PUMPS INC
NUCLEAR POWER
D R HYATT
240 FALL ST
SENECA FALLS NY 13148

117057103779 1 1C01CY1FB11M1
GPU NUCLEAR
PLANT OPERATIONS DIRECTOR
RT 441 S PO BOX 480
MIDDLETOWN PA 17057

117057139756 1 1C01CY1FB11M1
GPU NUCLEAR
TMI NUCLEAR STATION
T S BROUGHTON
DIR OPERATIONS & MAINT
PO BOX 480
MIDDLETOWN PA 17057

108731081561 1 1C01CY1FB11M1
GPU NUCLEAR
OYSTER CREEK NPS
E E FITZPATRICK
VICE PRESIDENT & DIRECTOR
PO BOX 388
FORKED RIVER NJ 08731

117057103778 1 1C01CY1FB11M1
GPU NUCLEAR
LICENSING & NUCL SAFETY
R E ROGAN
DIRECTOR
RT 441 S PO BOX 480
MIDDLETOWN PA 17057

117057109991 1 1C01CY1FB11M1
GPU NUCLEAR CORP
COMMUNICATIONS
DOUG REDELL
PO BOX 480
MIDDLETOWN PA 17057

129731137908 1 1C01CY1FB11M1
GPU NUCLEAR CORP
G W BUSCH
LICENSING MGR
PO BOX 388
FORKED RIVER NJ 08731

117057137823 1 1C01CY1FB11M1
GPU NUCLEAR CORP
MICHAEL B ROCHE
VICE PRES & DIRECTOR-TMI2
PO BOX 480
MIDDLETOWN PA 17057

107083100789 1 1C01CY1FB11M1
GRAVER CHEMICAL
CHEMICAL PRODUCTS
KENNETH A LORDY
SUPVR CHEM PRODUCTS
2720 US HWY 22
UNION NJ 07083

102910139227 1 1C01CY1FB11M1
GRINNELL CORP
EDWARD BEFFA
PLANT MANAGER
1341 ELMWOOD AVE
CRANSTON RI 02910

132520000709 1 1C01CY1FB11M1
GULF POWER CO
POWER GENERATION & TRANSMIS
GEORGE O LAYMAN
ASST TO VICE PRESIDENT
PO BOX 1151
PENSACOLA FL 32520

170775080517 1 1C01CY1FB11M1
GULF STATES UTILITIES CO
RIVER BEND 1 NPS
PLANT MANAGER
ST FRANCISVILLE LA 70775

170775142361 1 1C01CY1FB11M1
GULF STATES UTILITIES CO
LEIF L DIETRICH
SUPERVISOR NUCLEAR LICENSING
PO BOX 220
ST FRANCISVILLE LA 70775

122041056038 1 1C01CY1FB11M1
GUNDOLA SUNDGREN
G SUNDGREN
MANAGER
5827 COLUMBIA PIKE
SUITE 517
FALLS CHURCH VA 22041

153201139102 1 1C01CY1FB11M1
HARNISCHFEGER CORP
INDUSTRIAL DIV
GEORGE BOEHMER
MANAGER QUALITY ENGRG
4400 W NATIONAL AVE
MILWAUKEE WI 53201

105102140755 1 1C01CY1FB11M1
HARTFORD STEAM BOILER
CODES & STANDARDS
W LAROCHELLE
ASST MANAGER
ONE STATE ST
HARTFORD CT 06102

105402140097 1 1C01CY1FB11M1
HAYWARD TYLER
ENGINEERING DEPT
LAURIE J DOREY
PO BOX 492
BURLINGTON VT 05402

107054141967 1 1C01CY1FB11M1
GPU NUCLEAR CORP
ALWR UTIL STEERING COMMITTEE
EDWIN E KINTNER
CHAIRMAN
ONE UPPER POND RD
PARSIPPANY NJ 07054

117057105180 1 1C01CY1FB11M1
GPU NUCLEAR CORP
C W SMYTH
TMI 1 LICENSING MGR
P O BOX 480
MIDDLETOWN PA 17057

1GREEC057557 1 1CG1CY1FB11M1
GREEK ATOMIC ENERGY COMMISSION
NUCLEAR TECHNOLOGY DEPT
JOHN KOLLAS
ADMINISTRATOR
15310 AGHIA PARASKEVI
ATTIKI GREECE

156071091701 1 1C01CY1FB11M1
GULF & WESTERN MFG CO
TAYLOR FORGE ENGR SYS
STAN D GRIGGS
QA MANAGER
1ST & IRON ST
PAOLA KS 66071

132520103304 1 1C01CY1FB11M1
GULF POWER CO
POWER GENERATION & TRANSMIS
GEORGE O LAYMAN
ASST TO VICE PRESIDENT
PO BOX 1151
PENSACOLA FL 32520

170775110527 1 1C01CY1FB11M1
GULF STATES UTILITIES CO
NUCLEAR LICENSING
JAMES C DEDDENS
SENIOR VICE PRESIDENT (RBNG)
PO BOX 220
ST FRANCISVILLE LA 70775

170775062571 1 1C01CY1FB11M1
GULF STATES UTILITIES CO
RIVER BEND STATION LIBRARY
SHARON EAMES
PO BOX 220
ST FRANCISVILLE LA 70775

102888053049 1 1C01CY1FB11M1
HAMMEL DAHL INC
DONALD A OUELLETTE
G A MANAGER
175 POST RD
WARWICK RI 02888

153201053037 1 1C01CY1FB11M1
HARNISCHFEGER CORP
OVERHEAD CRANES
RICHARD A HOLZHAUER
POST OFFICE BOX 310
MILWAUKEE WI 53201

195813138681 1 1C01CY1FB11M1
HAWAII DEPT OF HEALTH
ENVIRON HEALTH
BRUCE ANDERSON
DEPUTY DIRECTOR FOR ENV HLTH
PO BOX 3378
HONOLULU HI 96813

136130111026 1 1C01CY1FB11M1
HEALTH ADMINISTRATION
DR. EARL FOX
STATE HEALTH OFFICER
STATE OFFICE BLDG
RM 381
MONTGOMERY AL 36130

150507053039 1 1C01CY1FB11M1
HENRY PRATT CO
A K WILSON
VICE PRESIDENT ENGINEERING
401 SOUTH HIGHLAND AVENUE
AURORA IL 60507

130144142812 1 1C01CY1FB11M1
HENZE-MOVATS INC
TRACY NUTTALL
DOCUMENT CONTROL SUPVSR
200 CHASTAIN CENTER BLVD
KENNESAW GA 30144

1JAPAN091545 1 1C01CY1FB11M1
HIRATA VALVE INDUSTRY CO LTD
KAWASAKI DIV
S TANIMOTO
QA MANAGER
15 HISAMOTO TAKATSU-KU
KAWASAKI KANAGAWA JAPAN

1ENGLA139421 1 1C01CY1FB11M1
HOPKINSONS LTD
BRITANNIA WORKS
R WATSON
PO BOX B27- HD2
2URF HUDDERSFIELD ENGLAND

177001137824 1 1C01CY1FB11M1
HOUSTON LIGHTING & POWER CO
DONALD P HALL
GRP VICE PRESIDENT NUCLEAR
PO BOX 1700
HOUSTON TX 77001

177483080521 1 1C01CY1FB11M1
HOUSTON LIGHTING & POWER CO
SOUTH TEXAS PROJECT
WARREN H KINSEY
PLANT MANAGER
PO BOX 289
WADSWORTH TX 77483

177483141110 1 1C01CY1FB11M1
HOUSTON LIGHTING & POWER CO
SUPPORT LICENSING
MARK A MCBURNETT
MANAGER
PO BOX 289
WADSWORTH TX 77483

130084105871 1 1C01CY1FB11M1
HUB CORP
MARTIN SMITH
PC BOX 125
TUCKER GA 30084

123212139781 1 1C01CY1FB11M1
HUNTON & WILLIAMS
W T REVELEY III
ESQUIRE
PO BOX 1535
RICHMOND VA 23212

1AUSTRI38714 1 1C01CY1FB11M1
IAEA
DEPT OF NUCL ENERGY & SFTY
DR. MORRIS ROSEN
PO BOX 100
A-1400 VIENNA AUSTRIA

177704064605 1 1C01CY1FB11M1
IRM CORP
T D GANDY JR
INDUSTRY SPECIALIST
PO BOX 831
BEAUMONT TX 77704

183720110594 1 1C01CY1FB11M1
IDAHO DEPT OF LAW ENFORCEMENT
DAVID RICH
CAPTAIN
PO BOX 55
BOISE ID 83720

160601104470 1 1C01CY1FB11M1
ILLINOIS ATTORNEY GENERAL OFC
PUBLIC UTILITIES DIV
ROBERT W CUSHING
CHIEF
100 W RANDOLPH 13TH FL
CHICAGO IL 60601

162704109317 1 1C01CY1FB11M1
ILLINOIS DEPT OF NUCLEAR SFTY
ENGINEERING
CHIEF
1035 OUTER PARK DR
4TH FLOOR
SPRINGFIELD IL 62704

160137137480 1 1C01CY1FB11M1
ILLINOIS DEPT OF NUCLEAR SFTY
ANDREW GULCZYNSKI
800 ROOSEVELT RD - BLDG C
SUITE 200
GLEN ELLYN IL 60137

162704009000 1 1C01CY1FB11M1
ILLINOIS DEPT OF NUCLEAR SFTY
THOMAS ORTCIGER
DIRECTOR
1035 OUTER PARK DR
5TH FLR
SPRINGFIELD IL 62704

161727103444 1 1C01CY1FB11M1
ILLINOIS POWER CO
NUCLEAR PRGRM-CLINTON PWR STA
J S PERRY
PO BOX 678
V-275
CLINTON IL 61727

161727139704 1 1C01CY1FB11M1
ILLINOIS POWER CO
LICENSING & SAFETY
F A SPANGENBERG
MANAGER
PO BOX 678-CLINTON PWR STATION
CLINTON IL 61727

194583142285 1 1C01CY1FB11M1
IMPELL CORP
CORPORATE OFFICE
R A AYRES
CORPORATE QA MANAGER
PO BOX 5149
SAN RAMON CA 94583

110511139739 1 1C01CY1FB11M1
INDIAN POINT 3 NUC POWER PLANT
JOSEPH E RUSSELL
RESIDENT MANAGER
PO BOX 215
BUCHANAN NY 10511

143216139680 1 1C01CY1FB11M1
INDIANA MICHIGAN POWER CO
C/O AEPSC
MILTON F ALEXICH
VICE PRESIDENT
1 RIVERSIDE PLAZA
COLUMBUS OH 43216

108650064452 1 1C01CY1FB11M1
INDUSTRIAL ENGINEERING WORKS
C L WORTHINGTON JR
QA/C MANAGER
PO BOX 8008
TRENTON NJ 08650

120879091778 1 1C01CY1FB11M1
INDUSTRIAL QUALITY INC
HAROLD BERGER
PO BOX 2519
GAITHERSBURG MD 20879

180150093282 1 1C01CY1FB11M1
INFORMATION HANDLING SERVICES
SHELBY CARTER
15 INVERNESS WAY E
ENGLEWOOD CO 80150

108865091550 1 1C01CY1FB11M1
INGERSOLL RAND CO
ENGINEERED PUMP DIVISION
G D BOWEN
QA MANAGER
PO BOX 485
PHILLIPSBURG NJ 08865

120005090020 1 1C01CY1FB11M1
INSIDE NRC
DAVE AIROZO
WASHINGTON EDITOR
1120 VERMONT AVE NW
SUITE 1200
WASHINGTON DC 20005

1DENMA143286 1 1C01CY1FB11M1
INSPECTORATE OF NUCLEAR INSTAL
C/O CIVIL DEFENSE EMER PLAN
BJOERN THORLAKSEN
ADMINISTRATOR
18 VORDINGBORGGADE
DK-2100 COPENHAGEN DENMARK

280303142816 1 1C01CY1FB11M1
INST NUCLEAR MEDICAL EDUCATION
CHARLES H ROSE
5785 ARAPAHOE
SUITE D
BOULDER CO 80303

1YUGOS092128 1 1C01CY1FB11M1
INSTITUT JOZEF STEFAN
REACTOR ENGINEERING DIVISION
BORUT MAVKO
ADMINISTRATOR
JAMOVA 39
61111 LJUBLJANA YUGOSLAVI

1YUGOS092129 1 1C01CY1FB11M1
INSTITUT RUDER BOSKOVIC
PETAR TOMAS
ADMINISTRATOR
BIJENICKA C54
41000 ZAGREB YUGOSLAVI

130339066104 1 1C01CY1FB11M1
INSTITUTE OF NUCLEAR PWR OPER
TECHNICAL LIBRARY
MARY L WATSON
1100 CIRCLE 75 PKWY
SUITE 1500
ATLANTA GA 30339

1POLAND007288 1 1C01CY1FB11M1
INSTITUTE OF NUCLEAR RESEARCH
REACTOR ENGINEERING DEPT.
A STRUPCZEWSKI
ASST PROF
05-400
SWIERK NEAR WARSAW POLAND

192056040034 1 1C01CY1FB11M1
INTL CONSULTANTS
JAY S IYER
1620 WAGON WHEEL DRIVE
OCEANSIDE CA 92056

150319064173 1 1C01CY1FB11M1
IOWA DEPT OF HEALTH
BUREAU RADIOLOGICAL HLTH
DONALD A FLATER
CHIEF
LUCAS STATE OFFICE BLDG
DES MOINES IA 50319

150319081502 1 1C01CY1FB11M1
IOWA DEPT OF PUBLIC HEALTH
JOHN EURE
ASST TO DIV DIR -ENVIRO HLTH
LUCAS STATE OFFICE BLDG
DES MOINES IA 50319

152324080533 1 1C01CY1FB11M1
IOWA ELECTRIC LIGHT & POWER CO
DUANE ARNOLD NPS
PLANT MANAGER
3277 DAEC RD
PALO IA 52324

152406008660 1 1C01CY1FB11M1
IOWA ELECTRIC LIGHT & POWER CO
TONY BROWNING
LICENSING GROUP LEADER
PO BOX 351
CEDAR RAPIDS IA 52406

152324141492 1 1C01CY1FB11M1
IOWA ELECTRIC LIGHT & POWER CO
HERB GIORGIO
RADIATION PROTECTION SUPVR
3277 DAEC ROAD
PALO IA 52324

152406140918 1 1C01CY1FB11M1
IOWA ELECTRIC LIGHT & POWER CO
LEE LIU
CHIEF EXECUTIVE
P.O. BOX 351
CEDAR RAPIDS IA 52406

152808003134 1 1C01CY1FB11M1
IOWA ILLINOIS GAS & ELEC CO
ENERGY SUPPLY & ENGINEERING
STEPHEN E SHELTON
VICE PRESIDENT-ELECTRIC OPERA
PO BOX 4350
DAVENPORT IA 52808

1JAPAN053044 1 1C01CY1FB11M1
ISHIKAWAJIMA HARIMA HEAVY IND
NUCLEAR POWER DIVISION
Y HOTOI
1 SHIN-NAKAHARA-CHO
NO 235
ISOGO KU YOKOHAMA JAPAN

1ISRAE057568 1 1C01CY1FB11M1
ISRAEL ATOMIC ENERGY COM
LICENSING DIVISION
DAN LITAI
ADMINISTRATOR
PO BOX 7061
TEL AVIV 61070 ISRAEL

117603053048 1 1C01CY1FB11M1
ITI ENGINEERED VALVES
E C BROOME
CONTRACTS MGR
33 CENTERVILLE ROAD
LANCASTER PA 17603

119126141567 1 1C01CY1FB11M1
J E LONERGAN CO
VALVE DIV
O L BRECHT
QA MANAGER
2525 ORTHODOX ST
PHILADELPHIA PA 19126

121401143018 1 1C01CY1FB11M1
J STEWART BLAND ASSOCIATES INC
CAMILLE G WARD
133 DEFENSE HWY
STE 208
ANNAPOLIS MD 21401

101605053050 1 1C01CY1FB11M1
JAMESBURY CORP
QA ENGINEERING
GERALD P MENARD
640 LINCOLN STREET
WORCESTER MA 01605

12D036103276 1 1C01CY1FB11M1
JAPAN ELEC POWER INFO CTR
WASHINGTON OFFICE
T NISHIMOTO
MANAGER
1726 M ST NW #403
WASHINGTON DC 20036

160053139487 1 1C01CY1FB11M1
JOHN CRANE INC
STEVEN LEMBERGER
SENIOR DESIGN ENGINEER
6400 WEST OAKTON ST
MORTON GROVE IL 60053

199352107936 1 1C01CY1FB11M1
KAISER ENGINEERS HANFORD
LIBRARIAN
PO BOX 888
RICHLAND WA 99352

177478139958 1 1C01CY1FB11M1
KALSI ENGINEERING INC
DR. M. S KALSI
745 PARK TWO DR
SUGAR LAND TX 77478

120036032157 1 1C01CY1FB11M1
KANSAS ELECTRIC POWER CO INC
MANAGER
1100 17TH ST NW
SUITE 500
WASHINGTON DC 20036

166612139832 1 1C01CY1FB11M1
KANSAS CORPORATION COMMISSION
UTILITIES DIV
ROBERT D ELLIOTT
STATE OFC BLDG
4TH FLR
TOPEKA KS 66612

166612143626 1 1C01CY1FB11M1
KANSAS DEPT OF HEALTH & ENVIRN
BUR OF ENVIRON HEALTH SERVICES
GERALD W ALLEN
109 SW 4TH-MILLS BLDG
SUITE 602
TOPEKA KS 66612

166604003142 1 1C01CY1FB11M1
KANSAS ELEC POWER COOP INC
BILL GOSHORN
PROJECT COORDINATOR
P O BOX 4877
TOPEKA KS 66604

166839080574 1 1C01CY1FB11M1
KANSAS GAS & ELEC CO
WOLF CREEK 1 NPS
PLANT MANAGER
BURLINGTON KS 66839

160565143070 1 1C01CY1FB11M1
KCI ENGINEERING CONSULTANTS
ADMINISTRATION
MICHAEL E D'HAEM
MANAGER
1093 AUGUSTANA DR
NAPERVILLE IL 60565

132773139307 1 1C01CY1FB11M1
KEMCO INDUSTRIES INC
RICK WOLCOTT
MANAGER-QUALITY CONTROL
5481 S BRYANT AVE
SANFORD FL 32773

160049091566 1 1C01CY1FB11M1
KEMPER GROUP
LCE/SISS
D L TEVIS
RT 22
B-8
LONG GROVE IL 60049

106483091719 1 1C01CY1FB11M1
KERITE CO
J K RICHARDS
QA MANAGER
49 DAY ST
SEYMOUR CT 06483

115222064450 1 1C01CY1FB11M1
KEROTEST MANUFACTURING CORP
J BERARDUCCI
QA MANAGER
2525 LIBERTY AVE
PITTSBURGH PA 15222

154216139819 1 1C01CY1FB11M1
KEWAUNEE COUNTY BOARD
HAROLD RECKELBERG
KEWAUNEE COUNTY COURTHOUSE
KEWAUNEE WI 54216

120036139772 1 1C01CY1FB11M1
KIRKPATRICK LOCKHART ET AL
HERBERT H BROWN
ESQUIRE
1800 M ST NW SOUTH LOBBY
STE 200
WASHINGTON DC 20036

120036026915 1 1C01CY1FB11M1
KIRKPATRICK LOCKHART ET AL
LAWRENCE C LANPHER
1800 M ST NW SOUTH LOBBY
3TH FL
WASHINGTON DC 20036

1WGERM053057 1 1C01CY1FB11M1
KLOCKNER-WERK AG
GEORGSMARIENWERKE
W AUSTEL
Q A MANAGER
PO BOX 27 80
D 4500 OSNABRUCK WGERMANY

1WGERM091568 1 1C01CY1FB11M1
KLOCKNER-WERK AG
GEORGSMARIENWERKE
F BEIER
DIRECTOR GENERAL
POSTFACH 27 80
D 4500 OSNABRUCK WGERMANY

1KOREA093185 1 1C01CY1FB11M1
KOREA INST OF NUCLEAR SFTY
NUCLEAR SAFETY CENTER
YOUNG-JO KIM
HEAD, SAFETY INFORMATION DEPT
PO BOX 7 DAEDUK-DANJI
CHOONG-NAM KOREA

145809141977 1 1C01CY1FB11M1
KUNKLE INDUSTRIES INC
LONGERAN VALVE DIVISION
L E BENSON, JR.
QA MANAGER
8222 BLUFFTON RD
FORT WAYNE IN 46809

144477103306 1 1C01CY1FB11M1
LABARGE PIPE & STEEL CO
R & W MILL
F D BREWER
DIRECTOR OF QUALITY ASSURANCE
PO BOX 355
WAGONER OK 74477

108731091409 1 1C01CY1FB11M1
LACEY TOWNSHIP
MUNICIPALITY
818 LACEY RD
FORKED RIVER NJ 08731

102828141023 1 1C01CY1FB11M1
LAKE ENGINEERING CO
D P BROWN
PRESIDENT
PO BOX 296
GREENVILLE RI 02828

194550079656 1 1C01CY1FB11M1
LAWRENCE LIVERMORE LABORATORY
NUCLEAR SYSTEMS SAFETY PROG
KAREN L ANDERSON
PO BOX 808
L-128
LIVERMORE CA 94550

120036065264 1 1C01CY1FB11M1
LEHOEUF LAMB LEIBY & MACRAE
HARRY H VOIGT
1333 NEW HAMPSHIRE AVE NW
SUITE 1100
WASHINGTON DC 20036

122901091644 1 1C01CY1FB11M1
LIEBIG INTERNATIONAL INC
1545 AVON ST EXTENDED
CHARLOTTESVILLE VA 22901

119464139766 1 1C01CY1FB11M1
LIMERICK ECOLOGY ACTION
PO BOX 761
POTTSTOWN PA 19464

124506064445 1 1C01CY1FB11M1
LIMITORQUE CORP
WM J MILUSZUSKY
QC MANAGER
5114 WOODALL RD
LYNCHBURG VA 24506

124506038042 1 1C01CY1FB11M1
LIMITORQUE CORP
R D SEGEN
QUALITY ASSURANCE MGR
PO BOX 11318
LYNCHBURG VA 24506

124506106164 1 1C01CY1FB11M1
LIMITORQUE CORP
DANIEL S WARSING
TECH MANAGER
PO BOX 11318
LYNCHBURG VA 24506

111792105594 1 1C01CY1FB11M1
LONG ISLAND LIGHTING CO
SHOREHAM NPS
L F BRITT
MANAGER NUC LIC & REG AFFAIRS
PO BOX 618
WADING RIVER NY 11792

111792064623 1 1C01CY1FB11M1
LONG ISLAND LIGHTING CO
SHOREHAM NUCLEAR POWER STA
B F EVANS
RECORDS MANAGER
PO BOX 618
WADING RIVER NY 11792

111801106330 1 1C01CY1FB11M1
LONG ISLAND LIGHTING CO
LEGAL DEPT
JEFFREY L FUTTER
175 E OLD COUNTRY RD
HICKSVILLE NY 11801

111792100820 1 1C01CY1FB11M1
LONG ISLAND LIGHTING CO
SHOREHAM NPS
JOHN D LEONARD
VICE PRESIDENT-NUCLEAR OPERS
PO BOX 618
WADING RIVER NY 11792

111792103475 1 1C01CY1FB11M1
LONG ISLAND LIGHTING CO
NUCLEAR QUALITY ASSURANCE
J A NOTARO
MANAGER
PO BOX 618 NORTH COUNTRY RD
WADING RIVER NY 11792

111792091236 1 1C01CY1FB11M1
LONG ISLAND LIGHTING CO
SHOREHAM NPS
J A NOTARO
PLANT MANAGER
PO BOX 628
WADING RIVER NY 11792

170898092181 1 1C01CY1FB11M1
LOUISIANA DEPT OF ENV QUALITY
NUCLEAR ENERGY DIVISION
GLENN A MILLER
ADMINISTRATOR
PO BOX 14690
BATON ROUGE LA 70898

170066009583 1 1C01CY1FB11M1
LOUISIANA POWER & LIGHT CO
WATERFORD 3 NPS
PLANT MANAGER
PO BOX B
KILLONA LA 70066

170066137154 1 1C01CY1FB11M1
LOUISIANA POWER & LIGHT CO
WATERFORD 3 SES
G D ESPENAN
CORP HEALTH PHYSICIST
PO BOX B
KILLONA LA 70066

170066059184 1 1C01CY1FB11M1
LOUISIANA POWER & LIGHT CO
WATERFORD 3 SES
J R MCGAHA
PLANT MANAGER-NUCLEAR
PO BOX B
KILLONA LA 70066

170066103325 1 1C01CY1FB11M1
LOUISIANA POWER & LIGHT CO
WATERFORD 3
J J ZABRITSKI
NUCLEAR QA MANAGER
PO BOX B
KILLONA LA 70066

150515091580 1 1C01CY1FB11M1
MAGNETROL INTERNATIONAL INC
C. QUEYQUEP
PROJECT ENGINEER
5300 BELMONT RD
DOWNERS GROVE IL 60515

150515137224 1 1C01CY1FB11M1
MAGNETROL INTERNATIONAL INC
R. T. STIBBE
QA ENGINEER
5300 BELMONT RD
DOWNERS GROVE IL 60515

104333067133 1 1C01CY1FB11M1
MAINE DEPT OF ATTORNEY GENERAL
JEFFREY RIDGT
DEPUTY ATTORNEY GENERAL
STATE HOUSE STATION 5
AUGUSTA ME 04333

104333109494 1 1C01CY1FB11M1
MAINE DEPT OF HUMAN SERVICES
DIVISION OF HEALTH ENGINEERING
DONALD C. HOKIE
DIRECTOR
STATE HOUSE STATION #10
AUGUSTA ME 04333

104336103590 1 1C01CY1FB11M1
MAINE YANKEE ATOMIC POWER CO
CHARLES D. FRIZZLE
PRESIDENT
83 EDISON DR
AUGUSTA ME 04336

104336006319 1 1C01CY1FB11M1
MAINE YANKEE ATOMIC POWER CO
CHARLIE D. FRIZZLE
ASST CHAIRMAN OF THE BOARD
83 EDISON DR
AUGUSTA ME 04336

104336104197 1 1C01CY1FB11M1
MAINE YANKEE ATOMIC POWER CO
NUC ENGINEERING & LICENSING
DOUGLAS G. WHITTIER
MGR NUC ENG & LICENSING
83 EDISON DR
AUGUSTA ME 04336

110471105869 1 1C01CY1FB11M1
MANHATTAN COLLEGE
MECHANICAL ENGINEERING DEPT
ROBERT E. BERLIN
REACTOR ADMINISTRATOR
MANHATTAN COLLEGE
BRONX NY 10471

1WGERM091581 1 1C01CY1FB11M1
MANNESMANN ANLAGENBAU AG
ZENTRALE QUALITAETSSTELLE
4000 DUESSELDORF 30
THEODORSTRASSE 90 WGERMANY

1WGERM053063 1 1C01CY1FB11M1
MANNESMANN ANLAGENBAU AG
RO
F. BRUEHL
DIRECTOR
PO BOX 300307
4000 DUESSELDORF FRG WGERMANY

121224140990 1 1C01CY1FB11M1
MARYLAND DEPT OF ENVIRONMENT
TESH
LAWRENCE M. WARD
DIRECTOR
2500 BROENING HWY
BALTIMORE MD 21224

121401002458 1 1C01CY1FB11M1
MARYLAND DEPT OF NAT RESOURCES
NUCLEAR PROGRAMS
RICHARD MCLEAN
TAWES STATE OFFICE BLDG
B-3
ANNAPOLIS MD 21401

10106010533 1 1C01CY1FB11M1
MASSACHUSETTS DEPT OF PUB HLTH
WESTERN REGIONAL HEALTH OFFICE
WILLIAM J. BELL
23 SERVICE CENTER
NORTHAMPTON MA 01060

102202026029 1 1C01CY1FB11M1
MASSACHUSETTS DEPT PUB UTILTS
CHAIR
100 CAMBRIDGE ST
BOSTON MA 02202

102139079406 1 1C01CY1FB11M1
MASSACHUSETTS INST OF TECH
NUCLEAR REACTOR
JOHN BERNARD
138 ALBANY ST
NW12
CAMBRIDGE MA 02139

102101066215 1 1C01CY1FB11M1
MATERIAL HANDLING EQUIPMENT
STEVEN PARKHURST
PO BOX 118
BOSTON MA 02101

163166096274 1 1C01CY1FB11M1
MCDONNELL DOUGLAS CORP
MCDONNELL AIRCRAFT CO
DEBRA J. HILLMAN
PO BOX 516
0012491
ST LOUIS MO 63166

121224139709 1 1C01CY1FB11M1
MD DEPT OF ENVIRONMENT
RADIATION CONTROL
ROLAND G. FLETCHER
ADMINISTRATOR
2500 BROENING HWY
BALTIMORE MD 21224

160007053065 1 1C01CY1FB11M1
MEA INC
T. W. LASTEWICZ
PRESIDENT
2600 AMERICAN LANE
ELK GROVE VILLAGE IL 60007

102109142317 1 1C01CY1FB11M1
MERCURY CO OF NORWOOD INC
FRED N. ZINKEVICH
CORP QA MANAGER
PO BOX 9117
NEWTON CENTRE MA 02159

193021104264 1 1C01CY1FB11M1
METAL BELLOWS CORP
GLENN CALVIN
QA MANAGER
200 SCIENCE DRIVE PO BOX 8010
MOORPARK CA 91021

155404139947 1 1C01CY1FB11M1
METROPOLITAN MEDICAL CENTER
NUCLEAR MEDICINE DEPT
RICHARD HANSON
CNMT
900 S. 8TH ST
MINNEAPOLIS MN 55404

195125031693 1 1C01CY1FB11M1
MHR TECHNICAL ASSOC
TECHNICAL CONSULTANTS
1723 HAMILTON AVE
SUITE K
SAN JOSE CA 95125

195125011878 1 1C01CY1FB11M1
MHR TECHNICAL ASSOC
ENERGY ASSESSMENT
RICHARD B HUBBARD
1723 HAMILTON AVE
SUITE K
SAN JOSE CA 95125

148909140094 1 1C01CY1FB11M1
MICHIGAN DEPT OF LABOR
BOILER DIVISION
ROBERT J ABEN
ASST CHIEF
PO BOX 30015
LANSING MI 48909

148909143586 1 1C01CY1FB11M1
MICHIGAN DEPT OF LABOR
BOILER DIVISION
ROBERT J ABEN
ASST CHIEF, NUCLEAR INSPECTOR
PO BOX 30015
LANSING MI 48909

148909002467 1 1C01CY1FB11M1
MICHIGAN DEPT OF PUBLIC HEALTH
BUREAU OF ENV & OCC HLTH
LEE JAGER
3423 N LOGAN PG BOX 30195
LANSING MI 48909

INETH092092 1 1C01CY1FB11M1
MINISTRY SOCIAL AFFAIRS & EMPL
NUCLEAR DEPT
J VERSTEEG
ADMINISTRATOR
PO BOX 90804
2509 LV-GRAVENHA NETHERLAN

155440012028 1 1C01CY1FB11M1
MINNESOTA DEPT OF HEALTH
ENVIRONMENTAL HEALTH
ALICE D HENNIGAN
CHIEF-SECTION OF RAD CONTROL
717 DELAWARE ST SE PO BOX 2441
MINNEAPOLIS MN 55440

155414143564 1 1C01CY1FB11M1
MINNESOTA DEPT OF HEALTH
ENVIRONMENTAL HEALTH DIVISION
RAYMOND THRON
DIRECTOR
905 SE DELAWARE ST
MINNEAPOLIS MN 55414

155155137131 1 1C01CY1FB11M1
MINNESOTA POLLUTION CONT AGCY
JOHN FERMAN
NUCLEAR ENGINEER
520 LAFAYETTE RD
ST PAUL MN 55155

1KOREA138715 1 1C01CY1FB11M1
MINISTRY OF SCIENCE & TECH
NUCLEAR COOPERATION DIV, AEB
CHUNG-WON CHO
ADMINISTRATOR
NUCLEAR SITY & COOP OFFICE
GWACHEON 427-760 KOREA

139215137432 1 1C01CY1FB11M1
MISSISSIPPI BOARD OF HEALTH
DIV OF RADIOLOGICAL HEALTH
EDDIE S FUENTE
DIRECTOR
PO BOX 1700
JACKSON MS 39215

165102109446 1 1C01CY1FB11M1
MISSOURI DEPT OF NAT RESOURCES
RONALD A KUCECA
DEPUTY DIRECTOR
PO BOX 176
JEFFERSON CITY MO 65102

165102031055 1 1C01CY1FB11M1
MISSOURI PUBLIC SERVICE COM
UTILITY DIVISION
MANAGER ELECTRIC DEPT
PO BOX 340
JEFFERSON CITY MO 65102

159620005498 1 1C01CY1FB11M1
MONTANA DEPT OF HLTH & ENV SCI
OCCUPATIONAL HEALTH BUREAU
ADRIAN HOWE
CHIEF
COGSWELL BLDG ROOM A113
HELENA MT 59620

127802106383 1 1C01CY1FB11M1
MORRISON KNUDSEN CO INC
POWER SYSTEMS DIV
HARRY W FALTER
PRINCIPAL ENGINEER
PO BOX 1928
ROCKY MOUNT NC 27802

127801091597 1 1C01CY1FB11M1
MORRISON KNUDSEN CO INC
POWER SYSTEMS DIV
M V MITCHELL
DIV QA MANAGER
101 GELO RD
ROCKY MOUNT NC 27801

111747106683 1 1C01CY1FB11M1
MOS CONSULTING
MARKETING
SONNY KASTURI
VICE PRESIDENT
25 PIERMONT DR
MELVILLE NY 11747

130144138658 1 1C01CY1FB11M1
MOVATS INC
T NUTTALL
200 CHASTAIN CENTER BLVD #250
KENNESAW GA 30144

175237093917 1 1C01CY1FB11M1
MULTI-AMP SERVICES
JOHN J LAPICOLA
VICE PRESIDENT & GENERAL MGR
4271 BRONZE WAY
DALLAS TX 75237

148076144013 1 1C01CY1FB11M1
MULTIPLE DYNAMICS CORP
FRANK E GREGOR
PRESIDENT
29200 SOUTHFIELD RD
STE 103
SOUTHFIELD MI 48076

130328024935 1 1C01CY1FB11M1
MUNICIPAL ELECTRIC AUTH OF GA
THOMAS W LORIA
MGR OF GENERATION PLNG
1470 RIVEREDGE PKWY
ATLANTA GA 30328

127602139786 1 1C01CY1FB11M1
N CAROLINA DEPT OF JUSTICE
KAREN E LONG
ASSISTANT ATTORNEY GENERAL
PO BOX 629 JUSTICE BLDG
RALEIGH NC 27602

129710142082 1 1CO1CY1FB11M1
N CAROLINA ELEC MEMB CORP
DUKE POWER CO NUC STA
PAUL R PAPPAS
CATAWBA NUC STA SITE REP
PO BOX 256 HWY 274 NEWPORT
CLOVER SC 29710

158502141551 1 1CO1CY1FB11M1
N DAKOTA DEPT OF HEALTH
DIV OF ENVIRONMENTAL ENGINEERING
JANA MOUNT
BOX 5520
RM 304
BISMARCK ND 58502

1286580537 9 1 1CO1CY1FB11M1
NAMCO CONTROLS
B B PETTREY
MANAGER-PROD & MFG ENGR
1300 BORRIS RD
NEWTON NC 28658

137220055224 1 1CO1CY1FB11M1
NATIONAL BOARD OF BOILER INSP
C W ALLISON
613 ROCHELLE DR
NASHVILLE TN 37220

1MEXIC107902 1 1CO1CY1FB11M1
NATIONAL NUC SFTY & SFGDS COM
GERENTE DE TEC REC Y SER
DR. SERGIO WALLER MEJIA
ADMINISTRATOR
INSURGENTES SUR 1776
01030 MEXICO DF MEXICO

1CHINA093293 1 1CO1CY1FB11M1
NATIONAL NUCLEAR SAFETY ADM
ZHONG WANLI
ADMINISTRATOR
54 SANLIHE RD
BEIJING 100862 CHINA

123691142312 1 1CO1CY1FB11M1
NAVAL SEA SYSTEMS COMMAND
OFFICER IN CHARGE
DETACHMENT RASO
YORKTOWN VA 23691

127626109514 1 1CO1CY1FB11M1
NCUC-PUBLIC STAFF
ROBERT P GRUBER
EXECUTIVE DIRECTOR
PO BOX 29520
RALEIGH NC 27626

168509004300 1 1CO1CY1FB11M1
NEBRASKA DEPT OF HEALTH
DIV OF RADIOLOGICAL HEALTH
HAROLD BORCHERT
301 CENTENNIAL MALL SOUTH
BOX 95007
LINCOLN NE 68509

168601139835 1 1CO1CY1FB11M1
NEBRASKA PUBLIC POWER DISTRICT
G D WATSON
GENERAL COUNSEL
PO BOX 499
COLUMBUS NE 68601

144112108155 1 1CO1CY1FB11M1
NEI PEBBLES-ELECT. PRODUCTS INC
EQUIPMENT QUALIFICATION
CHARLES MOOSBRUGGER
ENG. SPEC.
17045 EUCLID AVENUE
CLEVELAND OH 44112

127626110058 1 1CO1CY1FB11M1
N CAROLINA UTILITIES COM
PUB STAFF
ROBERT P GRUBER
EXECUTIVE DIRECTOR
PO BOX 29520
RALEIGH NC 27626

144060103579 1 1CO1CY1FB11M1
NAMCO CONTROLS
J R BENDOKAITIS
SR PROJECT ENGINEER
8303 TYLER BLVD
MENTOR OH 44060

144135107956 1 1CO1CY1FB11M1
NASA LEWIS RESEARCH CENTER
NEAL T SAUNDERS
DIRECTOR OF AERONAUTICS
21000 BROOKPARK RD
MS 3-8
CLEVELAND OH 44135

143229055206 1 1CO1CY1FB11M1
NATIONAL BOARD OF BOILER INSP
MICHAEL F SULLIVAN
DIRECTOR OF INSPECTIONS
1055 CRUPPER AVE
COLUMBUS OH 43229

1ENGLA139420 1 1CO1CY1FB11M1
NATIONAL NUCLEAR CORP
PWR SYSTEMS DEPT
A HILL
KNUTSFORD
BOOTHS HALL, CHELFORD RD
CHESHIRE WA15 9QG ENGLAND

1ENGLA141845 1 1CO1CY1FB11M1
NATIONAL RADIOLOGICAL PROT RD
HEALTH PHYSICS
M C O'RIORDAN
NEWS EDITOR
CHILTON, DIDCOCK RD 11-ORG
OXON ENGLAND

127611143035 1 1CO1CY1FB11M1
NC DEPT ENVIRON HLTH & NAT RES
RADIATION PROTECTION
DAYNE J BROWN
DIRECTOR
PO BOX 27687
RALEIGH NC 27611

168509143176 1 1CO1CY1FB11M1
NEBRASKA DEPT OF ENVIRON CNTRL
JAY D RIGENBERG
PROGRAM MANAGER
301 CENTENNIAL MALL SOUTH
LINCOLN NE 68509

168321093190 1 1CO1CY1FB11M1
NEBRASKA PUBLIC POWER DISTRICT
COOPER NUCLEAR STATION
J M MEACHAM
DIVISION MGR OF NUCLEAR OPERS
PO BOX 98
BROWNVILLE NE 68321

168601003174 1 1CO1CY1FB11M1
NEBRASKA PUBLIC POWER DISTRICT
DAVID A WHITMAN
DIV MGR OF NUCLEAR SUPPORT
1414 15TH STREET
COLUMBUS NE 68601

127842094126 1 1CO1CY1FB11M1
NEUTRON PRODUCTS INC
WAYNE J COSTLEY
VICE PRESIDENT
22301 MT EPHRAIM RD
BOX 68
DICKERSON MD 20842

120842103405 1 1C01CY1FB11M1
NEUTRON PRODUCTS INC
J A RANSOFF
PRESIDENT
22301 MT EPHRAIM RD
PO BOX 58
DICKERSON MD 20842

189710092373 1 1C01CY1FB11M1
NEVADA OFFICE OF GOVERNOR
NUCLEAR WASTE PROJECT OFFICE
R LOUX
1802 N CARSON ST CAP COMPLEX
SUITE 252
CARSON CITY NV 89710

103301139726 1 1C01CY1FB11M1
NEW HAMPSHIRE ATTORNEY GENERAL
G D BISBEE
ASSOCIATE ATTORNEY GENERAL
208 STATE HOUSE ANNEX
CONCORD NH 03301

103874064760 1 1C01CY1FB11M1
NEW HAMPSHIRE YANKEE
RMD ARCHIVAL
L L HOUDE
PO BOX 300 SEABROOK STATION
02-05
SEABROOK NH 03874

187503139844 1 1C01CY1FB11M1
NEW MEXICO ASST ATTY GENERAL
ENERGY & UTILITIES UNIT
GARY EPLER
ASSISTANT ATTORNEY GENERAL
PO DRAWER 1508
SANTA FE NM 87503

111201142994 1 1C01CY1FB11M1
NEW YORK CITY DEPT OF HLTH
BUREAU FOR RADIATION CONTROL
ROBERT KULIKOWSKI
ACTING DIRECTOR
111 LIVINGSTON ST
BROOKLYN NY 11201

112233103385 1 1C01CY1FB11M1
NEW YORK DEPT OF ENVIRON CONSV
HAZARDOUS SUBSTANCES REGUL
DR PAUL J MERGES
ROOM 510, BUREAU OF RADIATION
50 WOLF RD
ALBANY NY 12233

111201137230 1 1C01CY1FB11M1
NEW YORK DEPT OF LABOR
RADIOLOGICAL HEALTH UNIT
FRANCIS J BRADLEY, PHD
PRINCIPAL RADIOPHYSICIST
1 MAIN STREET, ROOM 813
BROOKLYN NY 11201

112223010637 5 1C01CY1FB11M1
NEW YORK ERDA
WEST VALLEY PROGRAM
T K DEBOER
DIRECTOR
2 ROCKEFELLER PLAZA
ALBANY NY 12203

110511080469 1 1C01CY1FB11M1
NEW YORK POWER AUTHORITY
INDIAN POINT 3 NPS
PLANT MANAGER
PO BOX 214
BUCHANAN NY 10511

113093139745 1 1C01CY1FB11M1
NEW YORK POWER AUTHORITY
NINE MILE PT NUCLEAR STATION
JAMES A FITZPATRICK NP
GENERAL SUPT
PO BOX 41
LYCOMING NY 13093

189710138055 1 1C01CY1FB11M1
NEVADA DEPT OF HUMAN RESOURCES
RADIOLOGICAL HEALTH SECTION
STANLEY MARSHALL
SUPERVISOR
505 EAST KING ST
CARSON CITY NV 89710

1CANAD053376 1 1C01CY1FB11M1
NEW BRUNSWICK ELECTRIC PWR COM
POINT LEPREAU G S
ADBERT T MCGREGOR
PO BOX 10
LEPREAU NB EOG 2HD CANADA

103301081147 1 1C01CY1FB11M1
NEW HAMPSHIRE RAD HLTH PROGRAM
DIV OF PUBLIC HEALTH SERVICE
DIANE E TEFET
ADMINISTRATOR
HEALTH & WELFARE BLDG HAZEN DR
CONCORD NH 03301

103874080525 1 1C01CY1FB11M1
NEW HAMPSHIRE YANKEE
TRAINING CENTER
PETER RICHARDSON
PO BOX 300
SEABROOK NH 03874

187503142143 1 1C01CY1FB11M1
NEW MEXICO ENVIRON IMPROV DIV
HLTH & ENV DEPT ENV IMP DIV
JACK ELLVINGER
BUREAU CHIEF
1190 ST FRANCIS DR
SANTA FE NM 87503

111201143042 1 1C01CY1FB11M1
NEW YORK CITY DEPT OF HLTH
BUREAU FOR RADIATION CONTROL
ROBERT KULIKOWSKI
ASST DIRECTOR AND CHIEF
111 LIVINGSTON ST
BROOKLYN NY 11201

112203139171 1 1C01CY1FB11M1
NEW YORK DEPT OF HEALTH
ENV RADIATION PROTECTION
KARIM RIMAWI
TWO UNIVERSITY PLZ
RM 375
ALBANY NY 12203

112223059613 1 1C01CY1FB11M1
NEW YORK ENERGY OFFICE
EUGENE GLEASON
DEPUTY COMMISSIONER
2 ROCKEFELLER PLAZA
ALBANY NY 12223

113093080540 1 1C01CY1FB11M1
NEW YORK POWER AUTHORITY
FITZPATRICK NPS
PLANT MANAGER
LYCOMING NY 13093

110601062555 1 1C01CY1FB11M1
NEW YORK POWER AUTHORITY
NUCLEAR GENERATION
JOHN C BRUNS
EXECUTIVE VICE PRESIDENT
123 MAIN ST
WHITE PLAINS NY 10601

110019139738 1 1C01CY1FB11M1
NEW YORK POWER AUTHORITY
GERALD C GOLDSTEIN
ASSISTANT GENERAL COUNSEL
1633 BROADWAY
NEW YORK NY 10019

110601139741 1 1C01CY1FB11M1
NEW YORK POWER AUTHORITY
LEON GUAQUIL
DIRECTOR-PROJECT ENGINEERING
123 MAIN ST
WHITE PLAINS NY 10601

110511080920 1 1C01CY1FB11M1
NEW YORK POWER AUTHORITY
INDIAN POINT 3 NPS
D HALAMA
QA SUPERINTENDENT
PO BOX 215
BUCHANAN NY 10511

110019140375 1 1C01CY1FB11M1
NEW YORK POWER AUTHORITY
APPRAISAL & COMPLIANCE SERVICE
A. KLAUSMANN
SENIOR VICE PRESIDENT
1633 BROADWAY
NEW YORK NY 10019

110511079439 1 1C01CY1FB11M1
NEW YORK POWER AUTHORITY
INDIAN POINT 3 NUC PWR PLANT
MICHAEL F PECKHAM
ASST TO RESIDENT MANAGER
PO BOX 215
BUCHANAN NY 10511

110601001229 1 1C01CY1FB11M1
NEW YORK POWER AUTHORITY
NUCLEAR SAFETY EVAL
GEORGE M WILVERDING
MANAGER
123 MAIN ST
WHITE PLAINS NY 10601

113093054674 1 1C01CY1FB11M1
NEW YORK POWER AUTHORITY
JAMES A FITZPATRICK NUC PWR PL
E L ZUFELT
DRAFTING SUPERVISOR
PO BOX 41
LYCOMING NY 13093

112223081572 1 1C01CY1FB11M1
NEW YORK PUBLIC SERVICE COM
POWER DIVISION
DIRECTOR
3 EMPIRE STATE PLAZA
ALBANY NY 12223

112223105874 1 1C01CY1FB11M1
NEW YORK PUBLIC SERVICE COM
NINE MILE 2 PROJECT
MATT CINADR
PROJECT SUPERVISOR
3 EMPIRE STATE PLAZA
ALBANY NY 12223

112223142209 1 1C01CY1FB11M1
NEW YORK STATE ENERGY OFFICE
BUREAU OF NUCLEAR OPERATION
DONNA ROSS
ENERGY PLANNER
2 ROCKEFELLER PLAZA-BLDG 2
ALBANY NY 12223

120036026971 1 1C01CY1FB11M1
NEWMAN & HOLTZINGER
MICHAEL A BAUSER
1615 L ST NW
SUITE 1000
WASHINGTON DC 20036

120036139771 1 1C01CY1FB11M1
NEWMAN & HOLTZINGER
JACK R NEWMAN
1615 L ST NW
WASHINGTON DC 20036

120036139773 1 1C01CY1FB11M1
NEWMAN & HOLTZINGER
HAROLD F REIS
1615 L ST NW
WASHINGTON DC 20036

120036109898 1 1C01CY1FB11M1
NEWMAN & HOLTZINGER, P.C.
KEVIN P GALLEN
1615 L ST NW
WASHINGTON DC 20036

123606141561 1 1C01CY1FB11M1
NEWPORT NEWS INDUSTRIAL CORP
T E BOND
DIRECTOR OF ENGINEERING
700 THIMBLE SHOALS BLVD
STE113
NEWPORT NEWS VA 23606

103301141932 1 1C01CY1FB11M1
NH OFC OF EMERGENCY MGMT
GEORGE L IVERSON
DIRECTOR
107 PLEASANT ST
CONCORD NH 03301

113093080942 1 1C01CY1FB11M1
NIAGARA MOHAWK POWER CORP
QA OPERATIONS UNIT 2
C G BECKHAM
MANAGER
PO BOX 63
LYCOMING NY 13093

113093137234 1 1C01CY1FB11M1
NIAGARA MOHAWK POWER CORP
SECURITY
JOSEPH P BERATTA
PO BOX 63
B-1
LYCOMING NY 13093

113093079362 1 1C01CY1FB11M1
NIAGARA MOHAWK POWER CORP
NINE MILE POINT NPS
KIM A DAHLBERG
PLANT MANAGER-UNIT 1
PO BOX 32
LYCOMING NY 13093

113093064585 1 1C01CY1FB11M1
NIAGARA MOHAWK POWER CORP
NINE MILE POINT NPS
CATHERINE DEBAN
GEN SUPVSR
PO BOX 32-DDC CNTRL REC MGMT
LYCOMING NY 13093

113212143348 1 1C01CY1FB11M1
NIAGARA MOHAWK POWER CORP
NUCLEAR
ALFRED ISSA
301 PLAINFIELD RD
SM-2
SYRACUSE NY 13212

113093107884 1 1C01CY1FB11M1
NIAGARA MOHAWK POWER CORP
TECHNICAL LIBRARY
CHRISTIE PHYLLIS
PO BOX 32
LYCOMING NY 13093

113212126500 1 1C01CY1FB11M1
NIAGARA MOHAWK POWER CORP
R RALPH SYLVIA
EXECUTIVE VICE PRESIDENT
301 PLAINFIELD RD
SYRACUSE NY 13212

113202110377 1 1C01CY1FB11M1
NIAGARA MOHAWK POWER CORP
GARY D WILSON ESQ
SENIOR ATTORNEY
300 ERIE BLVD WEST
SYRACUSE NY 13202

1ITALY080892 1 1C01CY1FB11M1
NIRA
LIBRARY
VIA DEI PESCATORI 35
GENOVA 16129 ITALY

108625137448 1 1C01CY1FB11M1
NJ DEPT OF ENVIRON PROTECTION
RADIATION PROTECTION PRGRMS
DR. JILL LIPOPI
ASST DIRECTOR
CN 415
TRENTON NJ 08625

106385080479 1 1C01CY1FB11M1
NORTHEAST NUCLEAR ENERGY CO
MILLSTONE 1 NPS
PLANT MANAGER
PO BOX 128
WATERFORD CT 06385

106101142395 1 1C01CY1FB11M1
NORTHEAST NUCLEAR ENERGY CO
JOHN SULLIVAN
BOX 270
HARTFORD CT 06101

106101064595 1 1C01CY1FB11M1
NORTHEAST UTILITIES SERVICE CO
R M DAVENPORT
MGR-GENERATION FACILITIES RECS
PO BOX 270
HARTFORD CT 06101

106385080931 1 1C01CY1FB11M1
NORTHEAST UTILITIES SERVICE CO
F C LIBBY JR
SUPVR ASSESSMENT SERVICES
PO BOX 128
WATERFORD CT 06395

106141103261 1 1C01CY1FB11M1
NORTHEAST UTILITIES SERVICE CO
NUCLEAR OPERATIONS
EDWARD J MROCKA
EXECUTIVE OFFICER
PO BOX 270
HARTFORD CT 06141

106141143477 1 1C01CY1FB11M1
NORTHEAST UTILITIES SERVICE CO
D O NORDBOOST
DIRECTOR QUALITY SERVICES
PO BOX 270
HARTFORD CT 06141

155362081509 1 1C01CY1FB11M1
NORTHERN STATES POWER CO
MONTICELLO NPS
PLANT MANAGER
PO BOX 600 W CTY RD 75
MONTICELLO MN 55362

155089080538 1 1C01CY1FB11M1
NORTHERN STATES POWER CO
PRAIRIE ISLAND 1 NPS
PLANT MANAGER
WELCH MN 55089

155401140917 1 1C01CY1FB11M1
NORTHERN STATES POWER CO
NUCLEAR SUPPORT SERVICES
J J HOWARD
PRESIDENT
414 NICOLLET MALL
MINNEAPOLIS MN 55401

155401079386 1 1C01CY1FB11M1
NORTHERN STATES POWER CO
C E LARSON
VICE PRESIDENT-NUCL GENERATION
414 NICOLLET MALL
MINNEAPOLIS MN 55401

155401003203 1 1C01CY1FB11M1
NORTHERN STATES POWER CO
NUCLEAR SUPPORT SERVICES
T M PARKER
MANAGER
414 NICOLLET MALL
MINNEAPOLIS MN 55401

155089081554 1 1C01CY1FB11M1
NORTHERN STATES POWER CO
PRAIRIE ISLAND NPS
M B SELLMAN
PLANT MANAGER
1717 WAKONADE DRIVE EAST
WELCH MN 55089

197204107157 1 1C01CY1FB11M1
NORTHWEST ENVIRON ADVOCATES
NINA BELL
408 SOUTHWEST 2ND ST #410
PORTLAND OR 97204

144130137725 1 1C01CY1FB11M1
NOVA MACHINE PRODUCTS CORP
P S NOVOSL
PRESIDENT
PO BOX 30287
MIDDLEBURG HEIGHTS OH 44130

107094000804 1 1C01CY1FB11M1
NPS INDUSTRIES INC
JOEL LEVINT
EXECUTIVE VICE PRES
600 MEADOWLANDS PKWY
SECAUCUS NJ 07094

178758091610 1 1C01CY1FB11M1
NPS INDUSTRIES INC
TERRY O'CONNELL
MANAGER OF QUALITY ASSURANCE
10420 METRIC BLVD
AUSTIN TX 78756

107932138464 1 1C01CY1FB11M1
NPS TECHNICAL SERVICES INC
TECHNICAL LIBRARY
GEORGE HENRY
QA MANAGER
147 COLUMBIA TURNPIKE
FLORHAM PARK NJ 07932

143229093284 1 1C01CY1FB11M1
NUCLEAR CONSULTING SERVICES
JOSEPH C ENNEKING
VICE PRESIDENT
PO BOX 29151
COLUMBUS OH 43229

122101143250 1 1C01CY1FB11M1
NUCLEAR DATA SERVICES
DAVID POWELL
PO BOX 1097
MCLEAN VA 22101