

QUALITY MATERNAL ANGUS WITH MUSCLE

# MARCY LIVESTOCK

62nd Annual Angus Bull & Female Sale

Thursday • January 26, 2023

12:30 pm MST

Gordon Livestock Auction • Gordon, NE

## *Selling 115 Angus Bulls*

30 Two-Year-Olds & 85 Yearlings

## **20 Select Bred Registered Heifers**

Every heifer calving after February 10 sells. None held back.

## **13 Select Bred Registered Cows**

Every cow calving after March 10 sells. None held back.

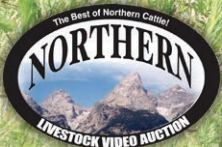
## **20 AI Bred Commercial Heifers**

From Hamilton Valley Ranch

---

*In one day, you can select from a program with more than 75 years of superior genetic selection.*

---



866-616-5035

[www.NorthernLivestockVideo.com](http://www.NorthernLivestockVideo.com)

*Marcy Livestock*  
F

[www.MarcyLivestock.com](http://www.MarcyLivestock.com)



**George Marcy**

Cell: 308/430-2005

PO Box 66 • 75 South Slim Buttes Rd • Chadron, NE 69337

marcylivestock@msn.com

[www.MarcyLivestock.com](http://www.MarcyLivestock.com)

Cattlemen and Women,

Welcome to our 62nd Annual Bull and Female Sale. We feel we have an excellent set of bulls and females for you to select from this year and appreciate your consideration of our genetics. We thank our customers for your loyal support over the lifetime we have been in the Angus business. As Tom & Kim have dispersed rest assured the Marcy Angus program will remain the same under our watch. We love breeding great cows and top feeder cattle.

We strive to have a disciplined breeding program that does not follow fads but produces the best cattle possible for real-world cattlemen who sell quality pounds for a living but must have a top-quality female. Producing superior females is what drives us in our bull selection. Maternal angus with muscle has always been the goal of our program.

The bulls are developed like athletes on a pasture to keep them sound on their feet and legs. They are fed a concentrated grain ration in the morning and on grass hay the rest of the time. All the bulls are genomic tested for parentage and genomic traits. We believe the parentage is the most valuable part of this, and the rest is to be used as you see fit. We breed long, thick, stout bulls with muscle, good feet, scrotal development, plus docility is very important in our breeding decisions.

Thank you so much for considering our cattle and please join us for lunch at 11 am on sale day. The bulls will be at Gordon Livestock from Monday January 23rd on, for your evaluation. As always, yearlings are available for viewing at the ranch 35 miles southwest of Chadron. 2-year-old bulls are being developed at Hamilton Valley Ranch south of Gordon, where the outstanding group of AI commercial Bred Heifers can be viewed..

We look forward to seeing you on January 26th in Gordon at the Sale! Call anytime if we can be of assistance in any recommendations or contact Northern Livestock Video if you would like to bid online.

*George and Andrea Marcy & Family*

**\$200/hd deducted from the sale price on yearling bulls for feed costs if you pick them up or have them delivered immediately from the sale site.**



*George and Andrea*



*Ben and Colter*

# Marcy Livestock

George Marcy  
Cell: 308/430-2005  
marcylivestock@msn.com



Thursday • January 26, 2023  
12:30 pm MST

Gordon Livestock Auction • Gordon, NE

## Selling 115 Angus Bulls

30 Two-Year-Olds & 85 Yearlings

33 Registered Females • 20 AI Bred Commercial Heifers

Sale Day Phone 308-282-1171

Gordon Livestock Auction Market  
P.O. Box 368 • Gordon, NE 69343

### AUCTIONEER

Joe Goggins, Billings, Montana . . . . . 406/861-5664

### SALE MANAGER

American Angus Hall of Fame . . . . . 816/532-0811  
Kurt Schaff . . . . . 816/520-6447

### SALE RING ASSISTANCE

Jim Geis, *Western Livestock Journal* . . . . . 970/590-0500  
Levi Landers, *American Angus Association* . . 308/730-1396  
Curt Cox, *Wyoming Livestock Roundup* . . . . 307-630-4604  
Dan Piroutek, *Tri State Livestock News* . . . . 605/685-4556  
Jake St. Amant, *Tri State Livestock News* . . . . 308/568-9084  
Cody Nye, *Midwest Messenger* . . . . . 308/760-8588

### GUARANTEED BID PROGRAM – ABSENTEE BIDDING

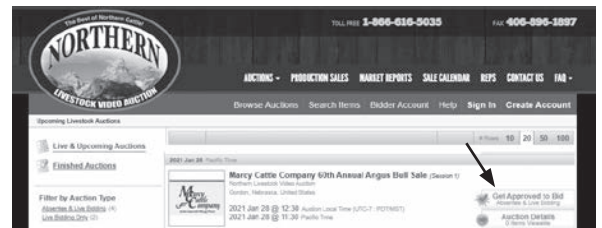
A 100% satisfaction guarantee for cattle purchased in your absence is offered by Marcy Livestock if George Marcy assists you with your purchases.

## Bid through Northern Livestock Video Auction's NEW Online Bidding Platform!

*Desktop and Mobile Friendly*

### For the Desktop

1. It is best to use the Google Chrome web browser.
2. Pre-Register at least one day prior to the sale.
3. Go to [bid.northernlivestockvideo.com](http://bid.northernlivestockvideo.com) and click "Get Approved to Bid".
4. Doing this will prompt you to create an account, after which you will fill out a bidder approval application.
5. Once Approved, an email will be sent to the email account provided, please click the link in that email to activate your account and a buyer number will be provided.
6. On sale day (after approval), visit [www.northernlivestockvideo.com](http://www.northernlivestockvideo.com) to view and bid!



### For the Mobile

Use your mobile device to download the Northern App and follow the above steps to get approved.

There is an instructional video on how to register to bid on our website, [www.northernlivestockvideo.com](http://www.northernlivestockvideo.com) if you have any questions.



*For technical assistance with Internet Viewing and Bidding Questions, call Sam Fraser 406-860-0590.*

### Phone Bidding

Anyone wanting to use the Northern Livestock phone bank to bid must pre-register and have a bid number to bid on the phone.  
**To register with NLVA call 866-616-5035 Before Sale Day.**  
View the Online CATALOG and VIDEO CLIP of each BULL selling at [www.northernlivestockvideo.com](http://www.northernlivestockvideo.com)  
Northern Livestock's Sale Day Bid Line: **1-406-245-0889.**

*Bidders who are successful in making purchases will be contacted following the sale to make payment and delivery arrangements.*

*Videos of the bulls will be available for viewing prior to the sale on [www.northernlivestockvideo.com](http://www.northernlivestockvideo.com)*

# MARCY LIVESTOCK

## SALE TIME

12:30 p.m. MST

## LUNCH

Complimentary lunch at 11 a.m.

## INSPECTION

Cattle are available anytime at the ranch and will be in Gordon from January 23 thru the sale.

## ACCOMMODATIONS

Please call if you wish us to reserve a room. There are a couple of motels in Gordon:

Jeffco Inn . . . . . 308-282-2935

Western Sand Motel . . . . . 308-282-1795

There are many nice motels available in Valentine, Neb. (90 miles east) and Chadron, Neb. (48 miles west) if you are coming to the sale. We encourage you to reserve your rooms early.

## DELIVERY

Free delivery on bulls to a central point within a radius of 500 miles. Free up to 800 miles on purchases of \$7,500 or more. Arrangements can be made for assistance with further distances if Marcy Cattle Co. is contacted ahead of time. To limit the stress and time that bulls are on the trailer, if a load has multiple owners, bulls will be delivered to a central point. Deduct \$50/hd. from purchase price if you haul yourself. *Delivery does not include females; we will help to line up trucking on your female purchases.*

## WINTERING

Free on yearlings until we begin delivery mid March. With calving and breeding, we need to start delivering bulls during that time period and early April. If you take your yearlings sale day or we deliver immediately, \$200/head is deducted from sale price for feed cost and an additional \$50/head is deducted if you haul yourself. *Two-year-old and herd bulls must be picked up or will be delivered immediately following the sale.*

## ULTRASOUND DATA

We are going to discontinue ultrasound as it seems to have no impact with the genomic data.

## SALE DAY WEIGHT

All bull weights will be listed on a supplement sheet that will include their actual weight the week of the sale. Updated sale information will be posted on [www.marcylivestock.com](http://www.marcylivestock.com), as well as on [www.northernlivestockvideo.com](http://www.northernlivestockvideo.com).

## HERD HEALTH

All cattle sell with proper health papers for interstate shipment. A rigid herd health program is followed. All bulls used for natural service have been tested clean for trich. See more on Bull development protocol on page 32

## TERMS AND CONDITIONS

Cattle will sell under the suggested Terms and Conditions of the American Angus Association. All bulls are guaranteed breeders, and have tested negative for PI BVD. Any updates will be available on sale day.

## GUARANTEE

All bulls selling for \$3,000 or more will be covered 50% by Marcy Livestock if they are injured during their first breeding season. Breeding season is defined as the 60-day period following the first turnout of the bulls.

All bulls selling for \$3,500 or more will be given 50% of the value of the injured bull, minus any salvage value, as credit in a future sale or toward a replacement bull if one is available. All injured bulls must be diagnosed by a veterinarian. Please notify us as soon as possible should injury occur and prior to the injured bull being sold for salvage. A copy of the sales receipt must be received by Marcy Livestock to receive proper credit. All claims must be made by Sept. 1, 2023.

*Example 1:* A \$6,000 bull is injured and will not heal. A credit of \$3,000 minus any salvage value will be given to the buyer.

*Example 2:* A \$3,500 bull is injured and will not heal. A credit of \$1,500 minus any salvage value will be given to the buyer.

*Example 3:* A \$3,400 bull is injured and will not heal. No credit is given. Buyer retains all salvage value.

## INSURANCE

Should you want your animals insured, mortality insurance will be available sale day through Dakota Ag Insurance, Lashea Bickel 605/530-0872. Six month mortality plus loss of use. 1 year mortality plus loss of use.

## CALVING EASE

Due to the differences in what our customers appear to want in heifer bulls, we use the following scoring system for Calving Ease

★★★ Indicates a bull that we think should be extremely easy calving for anyone.

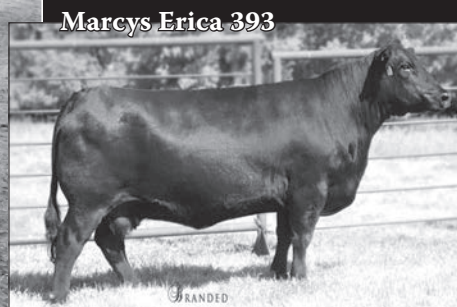
★ For those of you who want a little more horsepower on your heifers, we have marked with one ★ the bulls we think can work for you in this way on larger-framed heifers.

*Announcements from the block will take precedence over information in this catalog.*



# REFERENCE SIRES

## Marcys Scale Crusher



Marcys Erica 393

Pathfinder Dam of Marcys Scale Crusher

REFERENCE SIRE		Marcys Scale Crusher				
		Bull	02/05/10	registration: 16705566	tattoo: 031	
Connealy Onward #		Connealy Lead On #				
Sitz Upward 307R #		Altune of Conanga 6104				
Sitz Henrietta Pride 81M		Sitz Value 7097 #				
		Sitz Henrietta Pride 1370				
Leachman Right Time #		N Bar Emulation EXT #				
Marcys Erica 393 #		Leachman Erica 0025				
G Marcy Erica 118		G D A R Oscar 711 #				
		Marcys Erica 37				
CED	BW	WW	YW	Milk	Doc	
+12	+0.9	+71	+129	+27	+25	
CW	Marb	RE	SM	SB	SC	
+75	+1.19	+1.00	+77	+165	+291	

Owned with Lowery Livestock, Burwell, NE

• FOR REFERENCE ONLY.

- Scale Crusher is proven performance powerhouse bull that sires long bodied, powerful, long, wide hipped cattle that work in every aspect. A breed leader in performance, foot quality and docility.
- He has proven to be a dominate breeding bull both nationally and at Marcy Angus where he produced the top selling sire group for seven consecutive years and continued that dominance on the national stage with the record selling sire group across the nation during the 2021 sale season at SAV, The top selling bull at Hinman Angus in MT, the top selling sire group at Green Mountain Angus in MT, in 2022 & the top 2 selling females at Siebring Angus in IL 2022.
- Backed by the time-tested heritage of one of the oldest cow families developed by the Marcy family and with a pedigree stacked with proven Pathfinder Sires, Marcys Scale Crusher earned an individual birth ratio of 94 balanced with individual weaning and yearling ratios of 118 and 115 respectively and has gone on to balance a progeny birth ratio of 99 with a progeny weaning ratio of 101 on 234 head along with a progeny yearling ratio of 102 on 194 head and a progeny ribeye ratio of 103 on 185 head with 73 daughters in production who post a collective progeny weaning ratio of 101, generating an impressive EPD profile that combines moderate birth weight with explosive growth along with high fertility, strong maternal strength and outstanding docility, feet quality and carcass traits.

## Marcys Scale Breaker N Plus



CED	+7
BW	+1.5
WW	+71
YW	+120
Milk	+10
Doc	+24
CW	+58
Marb	+0.29
RE	+0.72
SM	+33
SB	+138
SC	+212

reg: 18219249 Sire Marcys Scale Crusher Dam Marcys Treasure 227#

## Marcys N Plus Reloaded



CED	+10
BW	+1.0
WW	+62
YW	+110
Milk	+29
Doc	+26
CW	+57
Marb	+0.38
RE	+0.79
SM	+70
SB	+143
SC	+255

reg: 19508133 Sire Marcys Scale Crusher Dam Marcys Treasure 227#

## Marcys Panhandle 214-9



CED	+1
BW	+3.0
WW	+74
YW	+131
Milk	+35
Doc	+20
CW	+63
Marb	+0.63
RE	+0.50
SM	+56
SB	+160
SC	+264

reg: 19469944 Sire Marcys 17 Scale Crusher 34-7 Dam Marcys 12 Ethelda E 64-2

# REFERENCE SIRES

## U-2 Coalition 206C



REFERENCE SIRE		U-2 Coalition 206C				
	Bull	01/26/15	registration: 18626847	tattoo: 206C		
Connealy Consensus 7229 #		Connealy Consensus #		Blue Lilly of Conanga 16		
HF Syndicate 213Z		TC Freedom 104 #		Young Dale Pollyanna 60T		
HF Miss Blackcap 27R		Young Dale Knock Out 134U		S A V Emulous 8145		
Young Dale Xclusive 25X		S A V Final Answer 0035 #		U-2 Erelite 8109U		
U2 Erelite 109Z		U-2 Erelite 1X				
CED	BW	WW	YW	Milk	Doc	
<b>+9</b>	<b>+0.8</b>	<b>+58</b>	<b>+112</b>	<b>+26</b>	<b>+39</b>	
CW	Marb	RE	\$M	\$B	\$C	
<b>+44</b>	<b>+.37</b>	<b>+.53</b>	<b>+72</b>	<b>+138</b>	<b>+251</b>	

- FOR REFERENCE ONLY.
- 8 outstanding ET sons sell. Coalition is fast becoming recognized as one of the great female sires of the breed.

## Tehama Tahoe B767



REFERENCE SIRE		Tehama Tahoe B767				
	Bull	09/06/13	registration: + 17817177	tattoo: B767		
Sitz Upward 307R #		Connealy Onward #		Sitz Henrietta Pride 81M		
Tehama Upward Y238		Tehama Gridmaker L234		Tehama Elite Blackbird K592 #		
Tehama Elite Blackbird T735		Sitz Traveler 8180 #		S A V Emulous 8145		
S A V Final Answer 0035 #		G A R Retail Product #		Tehama Mary Blackbird R704		
Tehama Mary Blackbird Y684		Tehama Mary Blackbird T073				
CED	BW	WW	YW	Milk	Doc	
<b>+10</b>	<b>+0</b>	<b>+79</b>	<b>+134</b>	<b>+32</b>	<b>+23</b>	
CW	Marb	RE	\$M	\$B	\$C	
<b>+47</b>	<b>+.94</b>	<b>+.81</b>	<b>+86</b>	<b>+149</b>	<b>+279</b>	

- FOR REFERENCE ONLY.
- Proven calving ease with the most performance we seen out of a bull used on 1st calf heifers

## LT Converse 8011



REFERENCE SIRE		LT Converse 8011				
	Bull	02/14/18	registration: 19251492	tattoo: 8011		
Connealy Confidence 0100 #		Connealy Tobin		Becka Gala of Conanga 8281		
Connealy Confidence Plus		Connealy Consensus #		Elbasta of Conanga 9703		
Elbanna of Conanga 1209		Koupal Juneau 797 #		Koupal Ebonette 734		
Koupal Advance 28 #		LT Callahan 0009		L T Extra Nugget 3014		
LT Nordica 6066 #		LT Nordica 3278 #				
CED	BW	WW	YW	Milk	Doc	
<b>+17</b>	<b>-2.3</b>	<b>+61</b>	<b>+104</b>	<b>+28</b>	<b>+20</b>	
CW	Marb	RE	\$M	\$B	\$C	
<b>+30</b>	<b>+.87</b>	<b>+.68</b>	<b>+79</b>	<b>+129</b>	<b>+246</b>	

- FOR REFERENCE ONLY.
- He sires wonderful calving ease, fleshing ability and super young females in production with perfect udders.

## Sitz Resilient 10208



REFERENCE SIRE		Sitz Resilient 10208				
	Bull	02/15/18	registration: 19057457	tattoo: 10208		
Mohren Substantial 272 #		Benfield Substance 8506 #		Mohren Glyn Mawr Elba 1758		
Sitz Stellar 726D		Connealy Final Product #		Sitz Pride 308Y #		
SITZ Pride 200B		GDAR Game Day 449 #		Sitz Pride 88T #		
Sitz Top Game 561X #		Sitz Rainmaker 10899		Sitz Miss Burgess 1609		
Sitz Miss Burgess 1856		Sitz Miss Burgess 4381				
CED	BW	WW	YW	Milk	Doc	
<b>+8</b>	<b>+0.3</b>	<b>+79</b>	<b>+141</b>	<b>+22</b>	<b>+16</b>	
CW	Marb	RE	\$M	\$B	\$C	
<b>+48</b>	<b>+.93</b>	<b>+.75</b>	<b>+88</b>	<b>+153</b>	<b>+286</b>	

- FOR REFERENCE ONLY.
- Moderate frame, easy fleshing bulls that will work on heifers. Maternal bred cattle with fleshing ability.

# REFERENCE SIRES

## Baldrige Flagstone F411



REFERENCE SIRE		Baldrige Flagstone F411				
	Bull	05/09/18	registration: + 19478642	tattoo: F411		
Moget Bullseye #		MOGCK Sure Shot #				
Hoover No Doubt		Mogck Mary 1255				
Miss Blackcap Ellston J2		SydGen C C & 7 #				
Styles Upgrade J59 #		Miss Blackcap Ellston D154 #				
Baldrige Isabel Y69		Sitz Upward 307R #				
Baldrige Isabel T935		Plainview Lassie 71B				
		Baldrige Kaboom K243 KCF				
		Baldrige Isabel P4527				
CED	BW	WW	YW	Milk	Doc	
-3	+3.4	+71	+131	+27	+34	
CW	Marb	RE	\$M	\$B	\$C	
+58	+0.94	+0.62	+83	+165	+297	

- FOR REFERENCE ONLY.
- An exceptional sire group. Sons are long, stout, big, topped bulls. A breed leader in docility, marbling, and foot structure. Flagstone ranks in the top 1 % of the breed for docility, marbling and foot structure.

## Marcys Full Bore 015



REFERENCE SIRE		Marcys Full Bore 015				
	Bull	02/13/20	registration: + 19785036	tattoo: 015		
Silveiras Conversion 8064		BT Crossover 758N#				
BUBS Southern Charm AA31		EXG Saras Dream S609 R3				
Hickory Hill Erica 009		Connealy Stimulus 8419 #				
Sitz Upward 307R #		Hickory Hill Erica TA32				
Marcys Erica 337		Connealy Onward #				
Marcys Erica 393 #		Sitz Henrietta Pride 81M				
		Leachman Right Time#				
		G Marcy Erica 118				
CED	BW	WW	YW	Milk	Doc	
+3	+3.7	+67	+116	+35	+3	
CW	Marb	RE	\$M	\$B	\$C	
+53	+0.91	+0.72	+61	+158	+266	

- FOR REFERENCE ONLY.
- Owned with Weber Angus, NE
- His first sons exhibit the power, length and muscle for top feeder cattle and females. Dam is the incomparable Marcy Erica 337

## Simonson Steamboat 4059



REFERENCE SIRE		Simonson Steamboat 4059				
	Bull	02/12/19	registration: 19550261	tattoo: 4059		
S A V Renown 3439 #		Rito 707 of Ideal 3407 7075				
T K Steamboat D307		S A V Blackcap May 4136				
T K Tesa W592		S A V Net Worth 4200 #				
A A R High Five 8563 #		T K Tesa R94				
Msar Lady Eston 326 #		A A R Image Maker 6538				
Msar Lady Eston 126 #		A A R Donna 6514 #				
		S A V Final Answer 0035 #				
		MSAR Lady Eston 526 #				
CED	BW	WW	YW	Milk	Doc	
+2	+3.3	+89	+154	+33	+13	
CW	Marb	RE	\$M	\$B	\$C	
+79	+0.30	+0.67	+59	+152	+256	

- FOR REFERENCE ONLY.
- Steamboat & Renovation continue the blood of SAV Renown with a powerful set of maternal bulls out of great females.

## Square B Atlantis 8060



REFERENCE SIRE		Square B Atlantis 8060				
	Bull	08/24/18	registration: + 19405249	tattoo: 8060		
Coleman Charlo 0256 #		O C C Paxton 730P #				
S A V Rainfall 6846		Bohi Abigale 6014				
S A V Blackcap May 4136		S A V 8180 Traveler 004 #				
Connealy Consensus #		S A V May 2397 #				
Elbanna of Conanga 1209		KMK Alliance 6595 I87 #				
Elbasta of Conanga 9703		Blinda of Conanga 004				
		Connealy Forward #				
		Elba of Conanga 3761 #				
CED	BW	WW	YW	Milk	Doc	
+6	+0.6	+55	+102	+25	+23	
CW	Marb	RE	\$M	\$B	\$C	
+25	+0.60	+0.87	+82	+121	+239	

- FOR REFERENCE ONLY.
- 8 ET sons sell. A powerful flush out of an elite Scale Crusher dam these bulls excel in muscle and do-ability.

# TWO-YEAR-OLD BULLS

## LOTS 1-4

The result of the successful blending of the famous Canadian sire with Marcys Erica 337 who became the all-time record-selling cow in the more than seventy-five year history of the Marcy Angus program when she topped the 2021 Marcy Female Sale at \$65,000 as the featured Lot 1 cow to Voss Angus of Iowa.

The outstanding dam of these bulls records a progeny weaning ratio of 108 on six natural calves, and she also produced the second top-selling bull of the 2017 Marcy Sale as well as the Marcy junior herd sire, Marcys Full Bore 015, who went on to be the \$17,500 top-selling bull of the 2022 Marcy Production Sale.

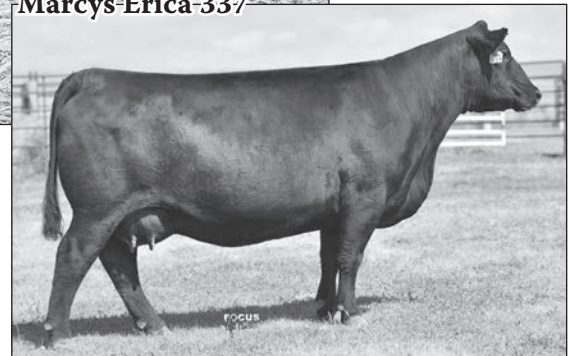
The dam of these bulls also has the distinction of being a full sister to the one-of-a-kind proven sire Marcys Scale Crusher who sired the top-selling sire group in Marcy annual production sales for eight consecutive years as well as the record-selling sire group of the entire 2021 sale season and numerous sales in the nation in 2021 and 2022.

The Pathfinder granddam balanced a progeny birth ratio of 93 with a progeny weaning ratio of 108 on ten natural calves, backed by one of the oldest and most prolific cow families in the Marcy herd.



*Superb phenotype. Used as a Junior herd sire in our registered program.*

**Marcys-Erica 337**



*Dam of Lots 1 - 2, Granddam of Lot 3*

## LOT 1 **Marcys Coalition 14**

Bull 2/5/21 reg: +20060550 tattoo: 14

HF Syndicate 213Z  
U-2 Coalition 206C  
U2 Erelite 109Z

Sitz Upward 307R #  
Marcys Erica 337  
Marcys Erica 393 #

Connealy Consensus 7229 #  
HF Miss Blackcap 27R  
Young Dale Xclusive 25X  
U-2 Erelite 1X

Connealy Onward #  
Sitz Henrietta Pride 81M  
Leachman Right Time #  
G Marcy Erica 118

CED	BW	WW	YW	Milk	Doc	Calving Ease
+5	+3.2	+65	+113	+32	+24	ET
						205 Wt
						ET
						Dam Prod
						6 WR 108
						3 YR 103
CW	Marb	RE	SM	SB	SC	ANGUS GS
+58	+0.59	+0.57	+81	+146	+270	Powered by Neogen Genesock

## LOT 2 **Marcys Coalition 117**

Bull 2/12/21 reg: +20060553 tattoo: 117

Sire U-2 Coalition 206C Dam Marcys Erica 337

CED	BW	WW	YW	Milk	Doc	Calving Ease
-1	+3.7	+66	+117	+35	+16	ET
						205 Wt
						ET
CW	Marb	RE	SM	SB	SC	ANGUS GS
+52	+0.47	+0.6	+57	+139	+237	Powered by Neogen Genesock

- Dam is the incomparable Erica 337
- Really long with a lot of power and butt end this bull will add pounds across the scale
- Clean sheathed and extra muscle and thickness. Used as a junior herd sire in our registered program.





# TWO-YEAR-OLD BULLS



- Grand dam is Erica 337
- Smooth, really deep & complete he has a lot to him. Big hip that carries all the way down.
- A long bodied, big wide topped bull.
- Used as a junior herd sire in our registered program.

**LOT 3**

## Marcys Coalition 1154

Bull 2/11/21 reg: 20060544 tattoo: 1154

HF Syndicate 213Z  
U-2 Coalition 206C  
U2 Erelite 109Z

Connealy Consensus 7229 #  
HF Miss Blackcap 27R  
Young Dale Xclusive 25X  
U-2 Erelite 1X

Cole Creek Cedar Ridge 1V #  
Marcys Erica 529  
Marcys Erica 337

Cole Creek Black Cedar 46P #  
Cole Creek Clovanada 49S #  
Sitz Upward 307R #  
Marcys Erica 393 #

CED	BW	WW	YW	Milk	Doc
+7	+1.8	+64	+124	+37	+30
CW	Marb	RE	\$M	\$B	\$C
+60	+0.2	+0.56	+71	+136	+247

Calving Ease
84
205 Wt
643
Dam Prod
4 WR 105
4 YR 104

**ANGUS**  
Powered by Angus Genetics

**LOT 4**

## Marcys Coalition 1133

Bull 2/4/21 reg: 20060535 tattoo: 1133

HF Syndicate 213Z  
U-2 Coalition 206C  
U2 Erelite 109Z

Connealy Consensus 7229 #  
HF Miss Blackcap 27R  
Young Dale Xclusive 25X  
U-2 Erelite 1X

Marcys Scale Breaker N Plus  
Marcys Erica 8115  
Marcys Erica 491

Marcys Scale Crusher  
Marcys Treasure 227 #  
Connealy Packer 547 #  
Marcys Erica 866 #

CED	BW	WW	YW	Milk	Doc
+7	+1.1	+54	+108	+22	+23
CW	Marb	RE	\$M	\$B	\$C
+46	+0.39	+0.62	+61	+142	+245

Calving Ease
★
Birth Wt
75
205 Wt
521
Dam Prod
3 WR 101
2 YR 106

**ANGUS**  
Powered by Angus Genetics

- Recommended for large framed heifers or cows.
- Deep made and stylish this easy doing bull has plenty of muscle.

U-2-Coalition-206C



U2-Erelite-109Z



Dam of U-2 Coalition 206C

# TWO-YEAR-OLD BULLS



## LOT 5 Marcys N Plus Reloaded 1208

Marcys Scale Crusher  
**Marcys N Plus Reloaded**  
 Marcys Treasure 227 #

Redland Emblazon 2021  
**Marcys 12 Erica 32-2**  
 Marcys 07 Erica 33-7

Sitz Upward 307R #  
 Marcys Erica 393 #  
 Redland Emblazon 2021  
 Marcys Treasure 947  
 O C C Emblazon 854E #  
 Redland Blackcap 1289  
 Marcys Panhandle Tom  
 Marcys 04 Erica 7-4

CED	BW	WW	YW	Milk	Doc
+7	+0.6	+50	+94	+31	+18
CW	Marb	RE	\$M	\$B	\$C
+38	+0.47	+0.42	+56	+117	+208

- Super deep and easy fleshing with a big rear end.
- These Reloaded sons are really easy doing, heavy muscled, correct cattle.



## LOT 6 Marcys N Plus 1216

Marcys Scale Breaker N Plus  
**Marcys N Plus 984**  
 Marcys Pride 487 #

Marcys Game Time  
**Marcys Pride 685**  
 Marcys Pride 431

Marcys Scale Crusher  
 Marcys Treasure 227 #  
 Marcys 09 Sledgehammer 103-9  
 Marcys Pride 69  
 GDAR Game Day 449 #  
 Marcys Erica 390  
 Leachman Right Time #  
 Marcys Pride 419

CED	BW	WW	YW	Milk	Doc
+11	+0.1	+60	+105	+26	+17
CW	Marb	RE	\$M	\$B	\$C
+43	+0.44	+0.3	+34	+116	+184

- Recommended for heifers or cows.
- This tank is bigger framed with extra capacity.
- A powerful bull with a lot of muscle.
- Clean sheathed and moves really well.
- Dam records 3@97 BWR

## LOT 7

## Marcys N Plus 1200

Bull 3/4/21 reg: 20305370 tattoo: 1200

Marcys Scale Breaker N Plus  
**Marcys N Plus 984**  
 Marcys Pride 487 #

Marcys Game Time  
**Marcys Manor 7180**  
 Ox Bow Manor 405

Marcys Scale Crusher  
 Marcys Treasure 227 #  
 Marcys 09 Sledgehammer 103-9  
 Marcys Pride 69  
 GDAR Game Day 449 #  
 Marcys Erica 390  
 C C A Emblazon 702 #  
 Ox Bow Manor 2102

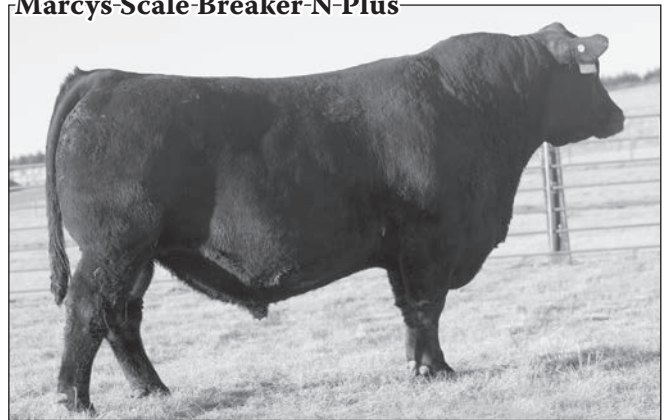
Calving Ease
★
Birth Wt
84
205 Wt
706
Dam Prod
4 WR 104
3 YR 102

CED	BW	WW	YW	Milk	Doc
+8	+0.6	+66	+127	+34	+27
CW	Marb	RE	\$M	\$B	\$C
+66	+0.61	+0.45	+64	+161	+273



- Recommended for large framed heifers or cows.
- Extra rib with a lot of fleshing ability.
- There is a lot to this bull, excellent muscle and do-ability out of superb sire group.

## Marcys Scale Breaker N Plus



## Marcys Pride 487



Dam of Marcys N Plus 984

The 3rd high selling female in our 2021 female sale to Bluffside Angus she is the donor dam of the outstanding group of Marcys Scale Crusher son, lots 34-40



# TWO-YEAR-OLD BULLS



## LOT 8 Marcys N Plus 1212

Bull 3/23/21 reg: 20305380 tattoo: 1212

Marcys Scale Breaker N Plus	Marcys Scale Crusher	Calving Ease				
Marcys N Plus 984	Marcys Treasure 227 #	★				
Marcys Pride 487 #	Marcys 09 Sledgehammer 103-9	Birth Wt				
	Marcys Pride 69	85				
Marcys Game Time	GDAR Game Day 449 #	205 Wt				
Marcys Erica 649	Marcys Erica 390	699				
Marcys Erica 4163	Marcys Freightliner 2137	Dam Prod				
	Marcys Erica 787M	3 WR 101				
CED	BW	WW	YW	Milk	Doc	2 YR 98
+8	+0.5	+53	+96	+26	+23	
CW	Marb	RE	SM	SB	SC	ANGUSGS
+36	+0.53	+0.32	+61	+117	+213	Powered by Neogen Genesock

- Recommended for large framed heifers or cows.
- A real meatwagon out of a great sire group
- He is really complete, with a lot to him and will hold up in the tough country.
- Dam records 3@97 BWR

## LOT 9 Marcys N Plus 1201

Bull 3/7/21 reg: 20305371 tattoo: 1201

Marcys Scale Breaker N Plus	Marcys Scale Crusher	Calving Ease				
Marcys N Plus 984	Marcys Treasure 227 #	★				
Marcys Pride 487 #	Marcys 09 Sledgehammer 103-9	Birth Wt				
	Marcys Pride 69	86				
Marcys Cedar Ridge 536	Cole Creek Cedar Ridge 1V #	205 Wt				
Marcys Treasure 765	Marcys Erica 864	618				
Marcys Treasure 265 #	S A V Final Answer 0035 #	Dam Prod				
	Marcys Treasure 045	4 WR 96				
CED	BW	WW	YW	Milk	Doc	2 YR 101
+8	-0.1	+59	+104	+29	+21	
CW	Marb	RE	SM	SB	SC	ANGUSGS
+30	+0.58	-0.01	+66	+102	+198	Powered by Neogen Genesock

- Recommended for large framed heifers or cows.
- This bull has some real power & size
- A powerful bull with a lot of muscle.
- Clean sheathed and moves really well



## Marcys Scale Crusher 8164



Sire of Lots 10 - 12

## LOT 10 Marcys Scale Crusher 1211

Bull 3/23/21 reg: 20305379 tattoo: 1211

Marcys Scale Crusher	Sitz Upward 307R #	Calving Ease				
Marcys Scale Crusher 8164	Marcys Erica 393 #	★				
Marcys Ethelda 439 #	Lisco No Question 802	Birth Wt				
	Marcys Ethelda 2105	85				
GDAR Game Day 449 #	Boyd New Day 8005 #	205 Wt				
Marcys Erica 555	G D A R Miss Wix 474 #	710				
Marcys Erica 390	Leachman Right Time #	Dam Prod				
	G Marcys Erica 118	6 WR 101				
CED	BW	WW	YW	Milk	Doc	5 YR 99
+7	+1.7	+65	+109	+26	+5	
CW	Marb	RE	SM	SB	SC	ANGUSGS
+65	-0.07	+0.43	+57	+123	+217	Powered by Neogen Genesock

- A high performance, long sided bull with a lot of power.
- Dam is a beautiful uddered, moderate framed cow.

## LOT 11 Marcys Scale Crusher 1213

Bull 3/28/21 reg: 20305381 tattoo: 1213

Marcys Scale Crusher	Sitz Upward 307R #	Calving Ease				
Marcys Scale Crusher 8164	Marcys Erica 393 #	★				
Marcys Ethelda 439 #	Lisco No Question 802	Birth Wt				
	Marcys Ethelda 2105	94				
McConnell Avalanche 69	McConnell Altitude 3114	205 Wt				
Marcys Ethelda E 8114	X6 Ms Pioneer 025 #	645				
Marcys Ethelda E 5157	Marcys Crusher 349	Dam Prod				
	Marcys Ethelda 188 #	2 WR 90				
CED	BW	WW	YW	Milk	Doc	2 YR 101
-2	+2.4	+67	+123	+23	+27	
CW	Marb	RE	SM	SB	SC	ANGUSGS
+56	+0.48	+0.74	+52	+146	+241	Powered by Neogen Genesock

- A very complete bull with a lot of muscle.
- Extra length and capacity.

## LOT 12 Marcys Scale Crusher 1214

Bull 3/29/21 reg: 20305383 tattoo: 1215

Marcys Scale Crusher	Sitz Upward 307R #	Calving Ease				
Marcys Scale Crusher 8164	Marcys Erica 393 #	★				
Marcys Ethelda 439 #	Lisco No Question 802	Birth Wt				
	Marcys Ethelda 2105	86				
JMB Traction 292 #	Sitz Top Game 561X #	205 Wt				
Marcys Erica 7102	JMB Emulota 013	688				
Marcys Erica 0161	Leachman Right Time #	Dam Prod				
	G Marcys Erica 916 #	3 WR 99				
CED	BW	WW	YW	Milk	Doc	2 YR 99
+4	+1.3	+66	+110	+39	+28	
CW	Marb	RE	SM	SB	SC	ANGUSGS
+51	+0.03	+0.69	+54	+104	+189	Powered by Neogen Genesock

- Another top performance Scale Crusher bred bull.
- Great depth of rib and long spined.

# TWO-YEAR-OLD BULLS



- Used as a junior herd sire this is one of the best Spur sons we have ever raised.
- He will breed every cow in the pasture.
- Dam was the 2nd high selling cow in our female sale and is also the dam of the Atlantis flush as lots 109-115 in this catalog.

LOT  
**13**

## Marcys Spur 1128

Bull 2/1/21 reg: 20052487 tattoo: 1128

Connealy Stimulus 8419 #  
Connealy Spur #  
Jazza of Conanga 8594 #

H A Power Alliance 1025 #  
Black Creeza of Conanga 5332  
TC Grid Topper 355 #  
Jemma of Conanga 5614  
Sitz Upward 307R #  
Marcys Erica 393 #  
O C C Emblazon 854E #  
G Marcys Erica 334

Marcys Scale Crusher  
Marcys Erica 578 #  
Marcys Erica 6124

CED	BW	WW	YW	Milk	Doc
<b>+3</b>	<b>+3.1</b>	<b>+74</b>	<b>+120</b>	<b>+32</b>	<b>+35</b>
CW	Marb	RE	\$M	\$B	\$C
<b>+71</b>	<b>+0.49</b>	<b>+0.77</b>	<b>+92</b>	<b>+153</b>	<b>+290</b>

Calving Ease
Birth Wt
<b>82</b>
205 Wt
<b>698</b>
Dam Prod
<b>5 WR 109</b>
<b>5 YR 108</b>

**ANGUSGS**  
Powered by Nogen GenCoek

## Marcys-Erica-578



Pathfinder Dam of Lot 13 and Lots 109 - 115.  
Dam of Marcys Spur 976, sire of Lots 16 and 17

LOT  
**14**

## Marcys Spur 1214

Bull 3/29/21 reg: 20305382 tattoo: 1214

Connealy Spur #  
Marcys Spur 8107  
Marcys Erica 221 #

Connealy Stimulus 8419 #  
Jazza of Conanga 8594 #  
Sitz Upward 307R #  
Marcys Erica 867 #  
O C C Emblazon 854E #  
Redland Henrietta Pride 1812  
Sitz Alliance 6595 #  
M Diamond Thunderella 295

Redland Emblazon 2134 #  
M Diamond Bluebird Lass 1140  
M Diamond Thunderella 411

CED	BW	WW	YW	Milk	Doc
<b>+4</b>	<b>+3.9</b>	<b>+68</b>	<b>+117</b>	<b>+34</b>	<b>+15</b>
CW	Marb	RE	\$M	\$B	\$C
<b>+51</b>	<b>+0.39</b>	<b>+0.41</b>	<b>+62</b>	<b>+125</b>	<b>+224</b>

Calving Ease
Birth Wt
<b>92</b>
205 Wt
<b>683</b>
Dam Prod
<b>9 WR 103</b>
<b>6 YR 102</b>

**ANGUSGS**  
Powered by Nogen GenCoek

- Deep ribbed and easy doing with plenty of muscle.
- A very smooth bull that is really put together.

LOT  
**15**

## Marcys Spur 1205

Bull 3/18/21 reg: 20305373 tattoo: 1205

Connealy Spur #  
Marcys Spur 8107  
Marcys Erica 221 #

Connealy Stimulus 8419 #  
Jazza of Conanga 8594 #  
Sitz Upward 307R #  
Marcys Erica 867 #  
GAR-EGL Protege #  
Baldridge Blackcap T163  
Marcys Scale Crusher  
Marcys Erica 68

Baldridge Waylon W34 #  
Marcys Erica 678  
Marcys Erica 3124

CED	BW	WW	YW	Milk	Doc
<b>+3</b>	<b>+2.5</b>	<b>+58</b>	<b>+101</b>	<b>+22</b>	<b>+14</b>
CW	Marb	RE	\$M	\$B	\$C
<b>+38</b>	<b>+0.74</b>	<b>+0.54</b>	<b>+76</b>	<b>+130</b>	<b>+245</b>

Calving Ease
Birth Wt
<b>78</b>
205 Wt
<b>643</b>
Dam Prod
<b>5 WR 100</b>
<b>3 YR 102</b>

**ANGUSGS**  
Powered by Nogen GenCoek

- A bigger framed bull he is really long bodied
- Smooth made in an nice package
- A complete bull with muscle & fleshing ability.

# TWO-YEAR-OLD BULLS

LOT **16**

## Marcys Spur 1202

Bull 3/9/21 reg: 20305372 tattoo: 1202

Connealy Spur #  
Marcys Spur 976  
Marcys Erica 578 #

Connealy Stimulus 8419 #  
Jazza of Conanga 8594 #  
Marcys Scale Crusher  
Marcys Erica 6124

Connealy Packer 547 #  
Marcys Ethelda E 7122  
Marcys 15 Ethelda E 49-5

Feltons Meat Packer 62 #  
Bestrelle of Conanga 539  
Sitz 4 Aces 4551 #  
Marcys 12 Ethelda E 53-2

CED	BW	WW	YW	Milk	Doc
+9	+0.6	+67	+115	+31	+21
CW	Marb	RE	SM	SB	SC
+53	+0.59	+0.86	+87	+149	+280

Calving Ease
★
Birth Wt
86
205 Wt
673
Dam Prod
4 WR 102
3 YR 95
ANGUSGS
Powered by Neogen Genesick

- Recommended for large framed heifers or cows.
- This bull is a tank with great depth of rib.
- Big topped, smooth and very complete.



LOT **17**

## Marcys Spur 1206

Bull 3/18/21 reg: 20305374 tattoo: 1206

Connealy Spur #  
Marcys Spur 976  
Marcys Erica 578 #

Connealy Stimulus 8419 #  
Jazza of Conanga 8594 #  
Marcys Scale Crusher  
Marcys Erica 6124

Lisco No Question 802  
Marcys Erica 871  
Marcys Erica 6118

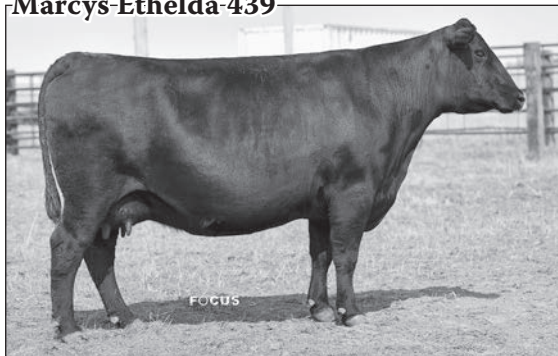
S A V Final Answer 0035 #  
LA Lass 419 #  
Marcys Right Time 427  
Marcys Erica 221 #

CED	BW	WW	YW	Milk	Doc
+9	+0.8	+80	+128	+17	+26
CW	Marb	RE	SM	SB	SC
+55	+0.66	+0.76	+56	+152	+253

Calving Ease
★★★
Birth Wt
70
205 Wt
681
Dam Prod
3 WR 100
2 YR 104
ANGUSGS
Powered by Neogen Genesick

- Recommended for heifers or cows.
- A really solid bull with plenty of performance.
- Great maternal bloodlines, his dam records 3@92 BWR

## Marcys-Ethelda-439



Lisco No Question daughter that sold to Hi Point Genetics, IA in our female dispersion

## BUBS Southern Charm AA31



Grandsire of Lots 18 - 20

LOT **18**

## Marcys Southern Charm 1207

Bull 3/18/21 reg: 20305375 tattoo: 1207

BUBS Southern Charm AA31  
Marcys Southern Charm 989  
Marcys Pride 412

Silveiras Conversion 8064  
Hickory Hill Erica 009  
Connealy Packer 547 #  
Marcys 04 Pride 171-4

Marcys Scale Crusher 715  
Marcys Erica 9152  
Marcys Erica 7156 #

Marcys Scale Crusher  
Marcys Erica 866 #  
JMB Traction 292 #  
Marcys 12 Erica 32-2

CED	BW	WW	YW	Milk	Doc
+9	-1.4	+36	+77	+28	+13
CW	Marb	RE	SM	SB	SC
+22	+0.81	+0.37	+53	+119	+207

Calving Ease
★★★
Birth Wt
71
205 Wt
638
Dam Prod
1 WR 94
1 YR 90
ANGUSGS
Powered by Neogen Genesick

- Recommended for heifers or cows.
- A moderate framed bull with a lot muscle and easy fleshing.
- Very complete he will work in cow country.

LOT **19**

## Marcys Southern Charm 1186

Bull 2/28/21 reg: 20095554 tattoo: 1186

BUBS Southern Charm AA31  
Marcys Southern Charm 999  
Marcys Misty 4112 #

Silveiras Conversion 8064  
Hickory Hill Erica 009  
Marcys Dash 111  
Marcys Misty 975

Marcys Scale Breaker N Plus  
Marcys Erica 8159  
Marcys Erica 495

Marcys Scale Crusher  
Marcys Treasure 227 #  
Redland Emblazon 2021  
Marcys Erica 485

CED	BW	WW	YW	Milk	Doc
+2	+3	+82	+135	+26	+20
CW	Marb	RE	SM	SB	SC
+54	+0.52	+0.67	+55	+134	+229

Calving Ease
★★★
Birth Wt
81
205 Wt
592
Dam Prod
3 WR 101
2 YR 104
ANGUSGS
Powered by Neogen Genesick

- A really good bull with extra length and a big square hip.
- Very complete this deep bodied bull has great doability, is he is very square on his feet with a great rear quarter.

LOT **20**

## Marcys Southern Charm 1209

Bull 3/23/21 reg: 20305377 tattoo: 1209

BUBS Southern Charm AA31  
Marcys Southern Charm 999  
Marcys Misty 4112 #

Silveiras Conversion 8064  
Hickory Hill Erica 009  
Marcys Dash 111  
Marcys Misty 975

Rito 112 of 2536 Rito 616 #  
Marcys Pride 69  
Marcys Pride 290

Rito 616 of 4B20 6807 #  
G A R Precision 2536  
Schurrtop Supreme #  
Marcys 96 Pride 116-6 #

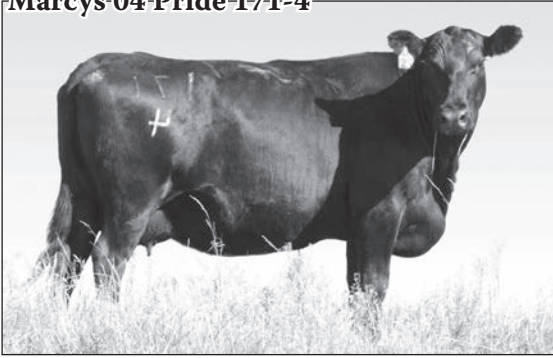
CED	BW	WW	YW	Milk	Doc
+1	+2.3	+64	+110	+27	+20
CW	Marb	RE	SM	SB	SC
+39	+0.59	+0.43	+45	+122	+203

Calving Ease
★★★
Birth Wt
88
205 Wt
694
Dam Prod
14 WR 104
12 YR 100
ANGUSGS
Powered by Neogen Genesick

- This power bull has a lot of rib to him & great fleshing ability.
- Heavy muscled this is one of the best. His dam is the foundation grandam behind the powerful Scale Crusher flush selling as lots 34-40

# TWO-YEAR-OLD BULLS

## Marcys 04-Pride-171-4



Lots 21-23 are all out of the powerful donor cow Marcys Pride 171-4 that produced over \$365,000 in progeny during her long career as an ET donor. She recorded 8 natural calves @96 BWR over her career.



21

## 21 Marcys Emblazon 193

O C C Emblazon 854E #  
Redland Emblazon 2021  
Redland Blackcap 1289

Leachman Right Time #  
Marcys 04 Pride 171-4  
Marcys 96 Pride 116-6 #

Bull 3/12/21 reg: +20294991 tattoo: 193

D H D Traveler 6807 #  
Dixie Erica of C H 1019  
Paramont Ambush 2172 #  
Redland Blackcap 516  
N Bar Emulation EXT #  
Leachman Erica 0025  
G D A R Oscar 734 #  
Marcys 91 Pride 2

CED	BW	WW	YW	Milk	Doc
-3	+1.1	+49	+79	+29	+12
CW	Marb	RE	\$M	\$B	\$C
+38	-0.04	+0.31	+37	+95	+160

- Long bodied with a lot of muscle. Really walks free he has excellent type & a superb maternal pedigree.

## 22 Marcys Emblazon 1222

Bull 3/18/21 reg: +20294994 tattoo: 1222  
Sire Redland Emblazon 2021 Dam Marcys 04 Pride 171-4

CED	BW	WW	YW	Milk	Doc
+0	+2.6	+47	+77	+22	+15
CW	Marb	RE	\$M	\$B	\$C
+26	+0.02	+0.4	+34	+83	+142

- Full brother to lot 21

## 23

Jauer 353 Traveler 589 27 #  
Sitz 4 Aces 4551 #  
Sitz Pride 2561

Leachman Right Time #  
Marcys 04 Pride 171-4  
Marcys 96 Pride 116-6 #

## Marcys Aces 197

Bull 3/12/21 reg: +20294993 tattoo: 197

Jauer 7111 Traveler 353 719  
Jauer 6807 Traveler 27 085  
D H D Traveler 6807 #  
Sitz Pride 2188

N Bar Emulation EXT #  
Leachman Erica 0025  
G D A R Oscar 734 #  
Marcys 91 Pride 2

CED	BW	WW	YW	Milk	Doc
+4	+1.1	+50	+89	+23	+8
CW	Marb	RE	\$M	\$B	\$C
+46	-0.12	+0.35	+63	+108	+203

- Maternal brother to lots 21 & 22. Very complete with a big wide top.
- A moderate framed cowmaker

## Marcys-Treasure-227



Dam of Lot 24

The pathfinder ET donor dam is the dam of Marcys Scale Breaker N Plus. She is in the ET program of M Diamond Angus in WY.

## 24

N Bar Emulation EXT #  
Leachman Right Time #  
Leachman Erica 0025

Redland Emblazon 2021  
Marcys Treasure 227 #  
Marcys Treasure 947

## Marcys Right Time 1221

Bull 3/19/21 reg: +20307057 tattoo: 1221

Emulation N Bar 5522 #  
N Bar Primrose 2424  
Tehama Bando 155 #  
Leachman Erica 8058

O C C Emblazon 854E #  
Redland Blackcap 1289  
Sitz Alliance 6595 #  
Marcys Treasure 496

CED	BW	WW	YW	Milk	Doc
+3	+2.5	+53	+94	+28	+23
CW	Marb	RE	\$M	\$B	\$C
+39	+0.01	+0.34	+45	+95	+168

- A top maternal ET bull out of the dam of Marcys Scale Breaker N Plus.
- Very complete, Right Time will always build you a cow herd of great udders and longevity.

## 25

O C C Emblazon 854E #  
Redland Emblazon 2021  
Redland Blackcap 1289

Leachman Right Time #  
Marcys Erica 395  
G Marcy Erica 118

## Marcys Emblazon 1223

Bull 3/21/21 reg: +20294996 tattoo: 1223

D H D Traveler 6807 #  
Dixie Erica of C H 1019  
Paramont Ambush 2172 #  
Redland Blackcap 516

N Bar Emulation EXT #  
Leachman Erica 0025  
G D A R Oscar 711 #  
Marcys Erica 37

CED	BW	WW	YW	Milk	Doc
-4	+3.9	+45	+66	+27	+11
CW	Marb	RE	\$M	\$B	\$C
+27	+0.21	+0.18	+44	+82	+150

- Maternal brother to lot 26. Dam is a full sister to the dam of Scale Crusher.. Great maternal pedigree

# TWO-YEAR-OLD BULLS

## Marcys-Erica-395



Dam of Lots 25 and 26

A full sister to the dam of Marcys Scale Crusher.  
Donor ET dam owned with Burchill Angus, ND

## 26

### Marcys Oscar 198

Bull 3/22/21 reg: +20294995 tattoo: 198

Baldrige Oscar #	Loma Lanes Cracker Jack 12J #	Calving Ease				
<b>G D A R Oscar 734 #</b>	F V Queen 399 #	Birth Wt				
L T Forever Lady 395 G D A R #	Traveler 1148 G D A R #	<b>ET</b>				
	Forever Lady 159 G D A R	205 Wt				
	N Bar Emulation EXT #	<b>ET</b>				
Leachman Right Time #	Leachman Erica 0025	Dam Prod				
<b>Marcys Erica 395</b>	G D A R Oscar 711 #	<b>9 WR 102</b>				
G Marcy Erica 118	Marcys Erica 37	<b>7 YR 101</b>				
<b>CED</b>	<b>BW</b>	<b>WW</b>	<b>YW</b>	<b>Milk</b>	<b>Doc</b>	<b>ANGUS</b> Powered by Neogen Genesuck
<b>+0</b>	<b>+3.1</b>	<b>+42</b>	<b>+65</b>	<b>+25</b>	<b>+5</b>	
<b>CW</b>	<b>Marb</b>	<b>RE</b>	<b>\$M</b>	<b>\$B</b>	<b>\$C</b>	
<b>+24</b>	<b>+0.34</b>	<b>+0.03</b>	<b>+21</b>	<b>+87</b>	<b>+134</b>	

- Maternal brother to lot 25 This blends to of the best foundation maternal bloodlines we used for some of the best cows to ever walk our pastures

## 27

### Marcys Atlantis 1122

Bull 1/29/21 reg: 20052484 tattoo: 1122

S A V Rainfall 6846	Coleman Charlo 0256 #	Calving Ease				
<b>Square B Atlantis 8060</b>	S A V Blackcap May 4136	Birth Wt				
Elbanna of Conanga 1209	Connealy Consensus #	<b>66</b>				
	Elbasta of Conanga 9703	205 Wt				
	VAR Rocky 80029 #	<b>541</b>				
SSAF Balboa 230	SSAF 153H Queen Lass 620 #	Dam Prod				
<b>Marcys Erica 5146</b>	Redland Emblazon 2021	<b>4 WR 97</b>				
Marcys Erica 263 #	Marcys Erica 629	<b>4 YR 98</b>				
<b>CED</b>	<b>BW</b>	<b>WW</b>	<b>YW</b>	<b>Milk</b>	<b>Doc</b>	<b>ANGUS</b> Powered by Neogen Genesuck
<b>+4</b>	<b>+2.4</b>	<b>+56</b>	<b>+101</b>	<b>+27</b>	<b>+22</b>	
<b>CW</b>	<b>Marb</b>	<b>RE</b>	<b>\$M</b>	<b>\$B</b>	<b>\$C</b>	
<b>+32</b>	<b>+0.36</b>	<b>+0.87</b>	<b>+73</b>	<b>+122</b>	<b>+231</b>	

- Used as a junior herd sire.
- This moderate framed bull is really thick & easy doing.
- He has a great maternal pedigree.

## 28

### Marcys Prime Cut 1204

Bull 3/12/21 reg: 20308486 tattoo: 1204

HA Prime Cut 4493	Vermilion Sirlain	Calving Ease				
<b>Marcys Prime Cut 925</b>	HA Miss Blackcap 9127	Birth Wt				
Marcys Erica 722	Baldrige Conductor C794	<b>84</b>				
	Marcys Erica 589	205 Wt				
	Marcys Scale Crusher	<b>673</b>				
Marcys Scale Crusher 7100	Marcys Erica 255	Dam Prod				
<b>Marcys Erica 9139</b>	Leachman Right Time #	<b>1 WR 100</b>				
Marcys Erica 65	Marcys Erica 866 #	<b>1 YR 93</b>				
<b>CED</b>	<b>BW</b>	<b>WW</b>	<b>YW</b>	<b>Milk</b>	<b>Doc</b>	<b>ANGUS</b> Powered by Neogen Genesuck
<b>+4</b>	<b>+1.8</b>	<b>+63</b>	<b>+106</b>	<b>+28</b>	<b>+22</b>	
<b>CW</b>	<b>Marb</b>	<b>RE</b>	<b>\$M</b>	<b>\$B</b>	<b>\$C</b>	
<b>+46</b>	<b>+0.45</b>	<b>+0.65</b>	<b>+62</b>	<b>+129</b>	<b>+229</b>	

- A really good thick bull he is big topped, heavy muscled and has a stout rear quarter.
- A complete bull out of a good young Scale Crusher bred dam

## 29

### Marcys Packer 194

Bull 3/17/21 reg: +20360892 tattoo: 194

Feltons Meat Packer 62 #	Finks 5522-6148 #	Calving Ease				
<b>Connealy Packer 547 #</b>	Graham N Mistress 8	Birth Wt				
Bestrelle of Conanga 539	Dalebanks Extender 6012 #	<b>ET</b>				
	Besta of Conanga 6538 #	205 Wt				
	O C C Emblazon 854E #	<b>ET</b>				
Redland Emblazon 2021	Redland Blackcap 1289	Dam Prod				
<b>Marcys Evergreen 745</b>	Sitz Alliance 6595 #	<b>5 WR 103</b>				
Marcys Evergreen 3102	G T Evergreen 304 #	<b>2 YR 101</b>				
<b>CED</b>	<b>BW</b>	<b>WW</b>	<b>YW</b>	<b>Milk</b>	<b>Doc</b>	<b>ANGUS</b> Powered by Neogen Genesuck
<b>-4</b>	<b>+4.5</b>	<b>+55</b>	<b>+85</b>	<b>+27</b>	<b>+26</b>	
<b>CW</b>	<b>Marb</b>	<b>RE</b>	<b>\$M</b>	<b>\$B</b>	<b>\$C</b>	
<b>+28</b>	<b>+0.6</b>	<b>+0.27</b>	<b>+69</b>	<b>+111</b>	<b>+213</b>	

- Full ET brother to Lot 30. A very complete, good sized bull that is smooth made.
- Dam is an exceptional donor dam in the Elston herd in ND



## 30

### Marcys Packer 1219

Bull 3/12/21 reg: +20360895 tattoo: 1219

Feltons Meat Packer 62 #	Finks 5522-6148 #	Calving Ease				
<b>Connealy Packer 547 #</b>	Graham N Mistress 8	Birth Wt				
Bestrelle of Conanga 539	Dalebanks Extender 6012 #	<b>ET</b>				
	Besta of Conanga 6538 #	205 Wt				
	O C C Emblazon 854E #	<b>ET</b>				
Redland Emblazon 2021	Redland Blackcap 1289	Dam Prod				
<b>Marcys Evergreen 745</b>	Sitz Alliance 6595 #	<b>5 WR 103</b>				
Marcys Evergreen 3102	G T Evergreen 304 #	<b>2 YR 101</b>				
<b>CED</b>	<b>BW</b>	<b>WW</b>	<b>YW</b>	<b>Milk</b>	<b>Doc</b>	<b>ANGUS</b> Powered by Neogen Genesuck
<b>+0</b>	<b>+3.2</b>	<b>+60</b>	<b>+110</b>	<b>+30</b>	<b>+19</b>	
<b>CW</b>	<b>Marb</b>	<b>RE</b>	<b>\$M</b>	<b>\$B</b>	<b>\$C</b>	
<b>+41</b>	<b>+0.26</b>	<b>-0.03</b>	<b>+57</b>	<b>+104</b>	<b>+192</b>	

- Full ET brother to Lot 29. Stout & thick made this a solid ET son out of a great cow. .

## 31

### Marcys Jerry Jeff 1210

Bull 3/23/21 reg: 20305378 tattoo: 1210

Baldrige Waylon W34 #	GAR-EGL Protege #	Calving Ease				
<b>SCC Jerry Jeff</b>	Baldrige Blackcap T163	Birth Wt				
RR Escort 6392	S A V 8180 Traveler 004 #	<b>86</b>				
	Paf 7581 Ext 9833 #	205 Wt				
	Boyd New Day 8005 #	<b>694</b>				
GDAR Game Day 449 #	G D A R Miss Wix 474 #	Dam Prod				
<b>Marcys Erica 335</b>	Leachman Right Time #	<b>8 WR 101</b>				
Marcys Erica 390	G Marcy Erica 118	<b>6 YR 101</b>				
<b>CED</b>	<b>BW</b>	<b>WW</b>	<b>YW</b>	<b>Milk</b>	<b>Doc</b>	<b>ANGUS</b> Powered by Neogen Genesuck
<b>+3</b>	<b>+3.1</b>	<b>+70</b>	<b>+112</b>	<b>+28</b>	<b>+7</b>	
<b>CW</b>	<b>Marb</b>	<b>RE</b>	<b>\$M</b>	<b>\$B</b>	<b>\$C</b>	
<b>+53</b>	<b>+0.71</b>	<b>+0.22</b>	<b>+84</b>	<b>+129</b>	<b>+251</b>	

- This docile bull moves really well.
- A very complete bull that is really well built he is out of an exceptional Game Day female whose dam is the dam of Marcys Game Time.

# YEARLING BULLS



With our breeding program we are constantly progressing to elevate the top genetics of our cowherd through embryo transplant. These ET bulls, while raised on surrogate dams, come from our most proven superior cows. They are proven genetics generation after generation based on actual data in production, not hype or guess.

## LOTS 32 - 33

A pair of exceptional Scale Crusher sons by one of the best ET donors to ever walk our pastures.. Marcys Misty 4112 is a 3rd generation flush donor that was almost perfectly made with exceptional femininity, feet & udder quality. . Stock bulls with muscle, capacity & soundness.

## LOT 32

### Marcys Scale Crusher 29

Bull 2/1/22 reg: +20414202 tattoo: 29

Sitz Upward 307R #  
**Marcys Scale Crusher**  
 Marcys Erica 393 #

Marcys Dash 111  
**Marcys Misty 4112 #**  
 Marcys Misty 975

Connealy Onward #  
 Sitz Henrietta Pride 81M  
 Leachman Right Time #  
 G Marcy Erica 118  
 Sitz Dash 10277 #  
 Marcys Forever Lady 935  
 Redland Emblazon 2021  
 Marcys Misty 632 #

CED	BW	WW	YW	Milk	Doc	4 WR 111
+5	+2	+75	+132	+20	+22	4 YR 108
CW	Marb	RE	\$M	\$B	\$C	ANGUSGS
+65	+0.33	+0.84	+77	+148	+269	Powered by Neogen GenCheck

• One of the best Scale Crusher sons we have ever produced.

### Marcys-Erica-578



Scale Crusher daughter. Pathfinder ET Donor owned by M Diamond Angus and J-M Angus. She is also the dam of Lots 13 and 109-115 in this sale.

## LOT 33

### Marcys Scale Crusher 210

Bull 1/26/22 reg: +20414203 tattoo: 210

Sire **Marcys Scale Crusher** Dam **Marcys Misty 4112 #**

CED	BW	WW	YW	Milk	Doc	Birth Wt
+6	+2.3	+72	+117	+25	+13	ET
CW	Marb	RE	\$M	\$B	\$C	205 Wt
+60	+0.18	+0.75	+75	+128	+241	ET

• 2 full brothers that are wide based stock bulls with muscle, capacity & soundness.

### Marcys-Erica-587



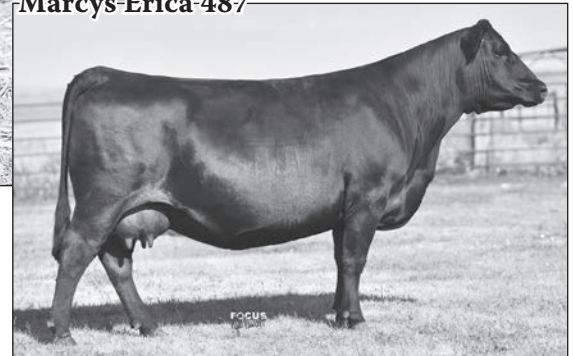
Scale Crusher daughter and Pathfinder ET donor owned by John Anderson



# YEARLING BULLS



Marcys-Erica 487



## 34 Marcys Scale Crusher 218

Bull 1/20/22 reg: +20414192 tattoo: 218

Sitz Upward 307R #  
**Marcys Scale Crusher**  
 Marcys Erica 393 #

Connealy Onward #  
 Sitz Henrietta Pride 81M  
 Leachman Right Time #  
 G Marcy Erica 118

Marcys 09 Sledgehammer 103-9  
**Marcys Pride 487 #**  
 Marcys Pride 69

Baldridge Sledgehammer S621  
 Marcys 04 Pride 171-4  
 Rito 112 of 2536 Rito 616 #  
 Marcys Pride 290

CED	BW	WW	YW	Milk	Doc
+12	+0.6	+62	+106	+35	+27
CW	Marb	RE	\$M	\$B	\$C
+53	+0.56	+0.41	+73	+137	+251

Calving Ease
★★★
Birth Wt
ET
205 Wt
ET
Dam Prod
6 WR 104
5 YR 102

**ANGUSGS**  
 Powered by Neogen GenCoek

• Recommended for heifers or cows.

One of the best embryo flushes we have ever had with maternal value and cow family strength for generations. Marcys Pride 487 was the 3rd high selling female in our 2021 cow sale to Bluffside Angus. This beautiful Pathfinder dam is double bred Right Time & has a very unique pedigree. She balances a progeny birth ratio of 96 with a progeny weaning ratio of 104 on 6 natural calves and a progeny IMF Ratio of 127 on three head. Phenotypically she has a perfect udder, feet and the wide based, easy doing feminine body type to stand apart.

## 35 Marcys Scale Crusher 221

Bull 1/23/22 reg: +20414194 tattoo: 221

Sire **Marcys Scale Crusher**

Dam **Marcys Pride 487 #**

CED	BW	WW	YW	Milk	Doc
+4	+2.8	+73	+123	+32	+9
CW	Marb	RE	\$M	\$B	\$C
+61	+0.46	+0.45	+63	+136	+239

Calving Ease
ET
Birth Wt
ET
205 Wt
ET

**ANGUSGS**  
 Powered by Neogen GenCoek

• Recommended for heifers or cows.

## 38 Marcys Scale Crusher 238

Bull 1/21/22 reg: +20414198 tattoo: 238

Sire **Marcys Scale Crusher**

Dam **Marcys Pride 487 #**

CED	BW	WW	YW	Milk	Doc
+9	+1.6	+72	+131	+22	+23
CW	Marb	RE	\$M	\$B	\$C
+67	+0.48	+0.7	+69	+157	+273

Calving Ease
ET
Birth Wt
ET
205 Wt
ET

**ANGUSGS**  
 Powered by Neogen GenCoek

• Recommended for heifers or cows.

## 36 Marcys Scale Crusher 230

Bull 1/20/22 reg: +20414201 tattoo: 230

Sire **Marcys Scale Crusher**

Dam **Marcys Pride 487 #**

CED	BW	WW	YW	Milk	Doc
+8	+0.8	+73	+136	+29	+18
CW	Marb	RE	\$M	\$B	\$C
+69	+0.56	+0.72	+42	+160	+250

Calving Ease
★★★
Birth Wt
ET
205 Wt
ET

**ANGUSGS**  
 Powered by Neogen GenCoek

• Recommended for heifers or cows.

## 39 Marcys Scale Crusher 241

Bull 1/17/22 reg: +20414199 tattoo: 241

Sire **Marcys Scale Crusher**

Dam **Marcys Pride 487 #**

CED	BW	WW	YW	Milk	Doc
+12	+1.1	+84	+145	+27	+21
CW	Marb	RE	\$M	\$B	\$C
+72	+0.45	+0.81	+66	+157	+270

Calving Ease
★★★
Birth Wt
ET
205 Wt
ET

**ANGUSGS**  
 Powered by Neogen GenCoek

• Recommended for heifers or cows.

## 37 Marcys Scale Crusher 236

Bull 1/23/22 reg: +20414197 tattoo: 236

Sire **Marcys Scale Crusher**

Dam **Marcys Pride 487 #**

CED	BW	WW	YW	Milk	Doc
+11	+1.4	+82	+144	+23	+26
CW	Marb	RE	\$M	\$B	\$C
+68	+0.75	+0.39	+81	+160	+289

Calving Ease
★
Birth Wt
ET
205 Wt
ET

**ANGUSGS**  
 Powered by Neogen GenCoek

• Recommended for large framed heifers or cows

## 40 Marcys Scale Crusher 242

Bull 1/21/22 reg: +20414200 tattoo: 242

Sire **Marcys Scale Crusher**

Dam **Marcys Pride 487 #**

CED	BW	WW	YW	Milk	Doc
+9	+0.8	+55	+103	+32	+30
CW	Marb	RE	\$M	\$B	\$C
+40	+0.62	+0.28	+73	+121	+230

Calving Ease
★★★
Birth Wt
ET
205 Wt
ET

**ANGUSGS**  
 Powered by Neogen GenCoek

• Recommended for large framed heifers or cows

# YEARLING BULLS

**Marcys-Crusher-022**



Lots 41 and 42 are bull brothers to the herd sire Marcys Crusher 022. He was the \$19,000 top selling yearling in our 2021 sale and has produced the top performance sire group at weaning at Stauffer Ranches in Canada in 2022.

**Marcys-Erica-9109**



Dam of Lot 43 pictured as a two year old.

**LOT 41** **Marcys Scale Crusher 219**

Sitz Upward 307R #  
**Marcys Scale Crusher**  
Marcys Erica 393 #

Leachman Right Time #  
**Marcys Pride 41**  
Marcys Pride 419

Connealy Onward #  
Sitz Henrietta Pride 81M  
Leachman Right Time #  
G Marcys Erica 118  
N Bar Emulation EXT #  
Leachman Erica 0025  
Redland Emblazon 2021  
Marcys Pride 272

CED	BW	WW	YW	Milk	Doc
+5	+2.3	+65	+114	+32	+20
CW	Marb	RE	SM	SB	SC
+66	+0.34	+0.72	+76	+142	+260

Calving Ease
★
Birth Wt
ET
205 Wt
ET
Dam Prod
5 WR 102
5 YR 100



**LOT 43** **Marcys Scale Crusher 212**

Sitz Upward 307R #  
**Marcys Scale Crusher**  
Marcys Erica 393 #

Connealy Spur #  
**Marcys Erica 9109**  
Marcys Erica 337

Connealy Onward #  
Sitz Henrietta Pride 81M  
Leachman Right Time #  
G Marcys Erica 118  
Connealy Stimulus 8419 #  
Jazza of Conanga 8594 #  
Sitz Upward 307R #  
Marcys Erica 393 #

Bull 1/28/22 reg: +20414190 tattoo: 212

CED	BW	WW	YW	Milk	Doc
+10	+1.4	+74	+127	+31	+27
CW	Marb	RE	SM	SB	SC
+70	-0.17	+0.66	+86	+122	+244

Calving Ease
★
Birth Wt
ET
205 Wt
ET
Dam Prod
2 WR 100
1 YR 106



- Recommended for large framed heifers or cows.
- Double bred to the extraordinary Marcys Scale Crusher this is one of the most unique ET matings in the sale.

**LOT 42** **Marcys Scale Crusher 234**

Sire **Marcys Scale Crusher**  
Dam **Marcys Pride 41**

CED	BW	WW	YW	Milk	Doc
+7	+1.5	+61	+105	+29	+21
CW	Marb	RE	SM	SB	SC
+62	-0.02	+0.69	+65	+123	+225

Calving Ease
★
Birth Wt
ET
205 Wt
ET

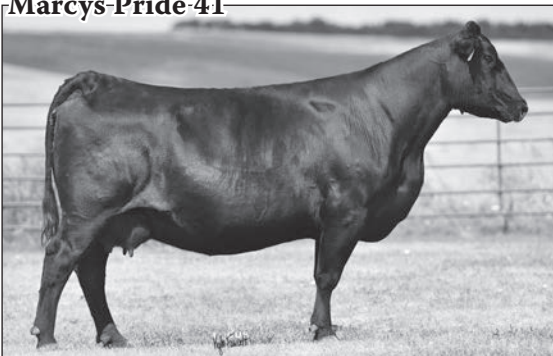


- Recommended for large framed heifers or cows.

**Marcys-Scale-Breaker-N-Plus**



**Marcys-Pride-41**



Dam of Lots 41 and 42, and Marcys Crusher 022 She is a proven ET dam that sold as an ET donor in our 2021 female sale to Minnie Creek Angus. She is a beautifully made cow that combine function, phenotype and pedigree.

**LOT 44** **Marcys Scale Breaker 2117**

Marcys Scale Crusher  
**Marcys Scale Breaker N Plus**  
Marcys Treasure 227 #

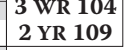
Marcys Game Time  
**Marcys Erica 635**  
Marcys Erica 4173

Sitz Upward 307R #  
Marcys Erica 393 #  
Redland Emblazon 2021  
Marcys Treasure 947  
GDAR Game Day 449 #  
Marcys Erica 390  
Marcys Oscar 245  
Marcys Erica 113

Bull 2/9/22 reg: 20410224 tattoo: 2117

CED	BW	WW	YW	Milk	Doc
+5	+2.5	+53	+93	+20	+19
CW	Marb	RE	SM	SB	SC
+38	+0.13	+0.32	+54	+101	+185

Calving Ease
★
Birth Wt
95
205 Wt
647
Dam Prod
3 WR 104
2 YR 109



- This bull is extremely well made with a big wide top, plenty of muscle and base width.
- Dam is an exception Game Time daughter that doubles up the blood of the foundation females behind Scale Crusher.

# YEARLING BULLS

## Marcys-N-Plus-Reloaded



A full brother to Marcys Scale Breaker N Plus.  
Reloaded is a light birth weight, easy fleshing, heavy muscled,  
excellent footed Scale Crusher herd sire.  
Owned with Botts Angus, MT and Elston Lone Tree Angus, ND



## LOT 45 Marcys N Plus Reloaded 283

Bull 1/30/22 reg: 20410218 tattoo: 283

Marcys Scale Crusher  
Marcys N Plus Reloaded  
Marcys Treasure 227 #

4M Ace 709  
Marcys Pride 913  
Marcys Pride 71

Sitz Upward 307R #  
Marcys Erica 393 #  
Redland Emblazon 2021  
Marcys Treasure 947  
Musgrave Aviator #  
KGM Enchantress 4054  
Baldrige Waylon W34 #  
Marcys 04 Pride 171-4

Calving Ease
★★★
Birth Wt
55
205 Wt
611
Dam Prod
2 WR 94
1 YR 96

CED	BW	WW	YW	Milk	Doc
+14	-2.2	+62	+111	+28	+28
CW	Marb	RE	\$M	\$B	\$C
+47	+0.3	+0.75	+69	+131	+239

ANGUS GS  
Powered by Nogen GenScan

- Recommended for heifers or cows.
- A smaller framed bull with tremendous depth and spring of rib.
- Reloaded is siring moderate framed thick easy doing bulls, many of which will work on heifers. We have been using him on heifers in our own program with excellent results.

## LOT 46 Marcys N Plus Reloaded 298

Bull 2/5/22 reg: 20410219 tattoo: 298

Marcys Scale Crusher  
Marcys N Plus Reloaded  
Marcys Treasure 227 #

4M Ace 709  
Marcys Susie 944  
M Diamond Susie 045

Sitz Upward 307R #  
Marcys Erica 393 #  
Redland Emblazon 2021  
Marcys Treasure 947  
Musgrave Aviator #  
KGM Enchantress 4054  
S Steamboat 3110  
M Diamond Susie 443

CED	BW	WW	YW	Milk	Doc
+12	+0.9	+71	+127	+24	+15
CW	Marb	RE	\$M	\$B	\$C
+57	+0.11	+0.9	+70	+126	+233

Calving Ease
★
Birth Wt
79
205 Wt
714
Dam Prod
2 WR 108
1 YR 103

ANGUS GS  
Powered by Nogen GenScan

- Recommended for large framed heifers and cows.
- A massive calving ease prospect this moderate framed bull is really built.
- Reloaded calves are outstanding for rib, muscle & good feet.

## LOT 47 Marcys N Plus Reloaded 2105

Bull 2/7/22 reg: 20410221 tattoo: 2105

Marcys Scale Crusher  
Marcys N Plus Reloaded  
Marcys Treasure 227 #

Baldrige Conductor C794  
Marcys Pride 732  
Marcys Pride 5127 #

Sitz Upward 307R #  
Marcys Erica 393 #  
Redland Emblazon 2021  
Marcys Treasure 947  
Baldrige Waylon W34 #  
Baldrige Forever Lady T269  
Marcys Game Time  
Marcys Pride 376

CED	BW	WW	YW	Milk	Doc
+3	+2.9	+73	+126	+26	+22
CW	Marb	RE	\$M	\$B	\$C
+56	+0.65	+0.39	+80	+141	+263

Calving Ease
Birth Wt
98
205 Wt
669
Dam Prod
3 WR 108
2 YR 109

ANGUS GS  
Powered by Nogen GenScan

- Typical Reloaded, thick, deep & easy fleshing.
- He's long, strong topped & capacious. His dam sells as lot 146 in the sale.



Marcy  
Livestock



www.MarcyLivestock.com

# YEARLING BULLS

## Marcys-Panhandle-214-9



High selling bull in our 2021 sale to Simonson Angus & Lowery Livestock

## Marcys-12-Ethelda-E-64-2



Dam of Marcys Panhandle 214-9  
This donor female sold to Saddle Butte Angus and Simonson Angus as a feature of our 2021 dispersion. Expect these Panhandle sons to be female makers.



48

## 48 Marcys Panhandle 2115

Bull 2/9/22 reg: 20410223 tattoo: 2115

Marcys 17 Scale Crusher 34-7	Marcys Scale Crusher	Calving Ease			
Marcys Panhandle 214-9	Marcys 13 Ethelda E 4-3				
Marcys 12 Ethelda E 64-2	Connealy Consensus 7229 #	Birth Wt			
	Marcys 10 Ethelda E 165-0	90			
Lisco No Question 802	S A V Final Answer 0035 #	205 Wt			
Marcys Pride 918	LA Lass 419 #	702			
Marcys Pride 7141	S Summit 956 #	Dam Prod			
	Marcys 15 Pride 139-5	2 WR 104			
CED	BW	WW	YW	Milk	Doc
+0	+2.9	+71	+120	+34	+29
CW	Marb	RE	SM	SB	SC
+63	+0.42	+0.65	+63	+147	+254

- This bull is long, powerful and really made right.
- Panhandle' was the \$22,000 top selling bull in our 2021 sale to Simonson Angus and Lowery Land & Livestock.
- Look for his 1st calves to make a big impact in the Sandhills this year at production sales.

## 49 Marcys Panhandle 2101

Bull 2/6/22 reg: 20410220 tattoo: 2101

Marcys 17 Scale Crusher 34-7	Marcys Scale Crusher	Calving Ease			
Marcys Panhandle 214-9	Marcys 13 Ethelda E 4-3				
Marcys 12 Ethelda E 64-2	Connealy Consensus 7229 #	Birth Wt			
	Marcys 10 Ethelda E 165-0	83			
Marcys No Question 463	Lisco No Question 802	205 Wt			
Marcys Pride 9127	Marcys Erica 221 #	598			
Marcys Pride 2131	Sitz Upward 307R #	Dam Prod			
	Marcys 04 Pride 171-4	2 WR 96			
CED	BW	WW	YW	Milk	Doc
+11	+0.3	+63	+114	+31	+22
CW	Marb	RE	SM	SB	SC
+47	+0.38	+0.16	+52	+110	+195

- Recommended for large framed heifers and cows.
- This is long & stout. His grandam sold to John Anderson as an ET donor
- Panhandle was widely used his 1st year and calves look very strong around the state.

## 50 Marcys Panhandle 2109

Bull 2/7/22 reg: 20410222 tattoo: 2109

Marcys 17 Scale Crusher 34-7	Marcys Scale Crusher	Calving Ease			
Marcys Panhandle 214-9	Marcys 13 Ethelda E 4-3				
Marcys 12 Ethelda E 64-2	Connealy Consensus 7229 #	Birth Wt			
	Marcys 10 Ethelda E 165-0	94			
HA Prime Cut 4493	Vermilion Sirloin	205 Wt			
Marcys Erica 934	HA Miss Blackcap 9127	650			
Marcys Erica 749	Lisco No Question 802	Dam Prod			
	Marcys Erica 5146	1 WR 97			
CED	BW	WW	YW	Milk	Doc
+6	+2.2	+74	+124	+26	+21
CW	Marb	RE	SM	SB	SC
+63	+0.79	+1.07	+65	+172	+288

- Very complete with a lot of muscle.
- A moderate framed bull that has a lot of muscle and a great hip.

## 51 Marcys Scale Crusher 2138

Bull 2/17/22 reg: 20410226 tattoo: 2138

Marcys Scale Crusher	Sitz Upward 307R #	Calving Ease			
Marcys Scale Crusher 0120	Marcys Erica 393 #				
Marcys 12 Erica 32-2	Redland Emblazon 2021	Birth Wt			
	Marcys 07 Erica 33-7	84			
BUBS Southern Charm AA31	Silveiras Conversion 8064	205 Wt			
Marcys Pride 996	Hickory Hill Erica 009	729			
Marcys Pride 69	Rito 112 of 2536 Rito 616 #	Dam Prod			
	Marcys Pride 290	2 WR 108			
CED	BW	WW	YW	Milk	Doc
+9	-0.7	+56	+92	+22	+15
CW	Marb	RE	SM	SB	SC
+34	+0.54	+0.58	+63	+107	+202

- Recommended for large framed heifers & cows.
- This bull has a lot of muscle, stifle and butt end to him.
- Great capacity and well put together.

## 52 Marcys Scale Crusher 2152

Bull 2/27/22 reg: 20410233 tattoo: 2152

Marcys Scale Crusher	Sitz Upward 307R #	Calving Ease			
Marcys Scale Crusher 0120	Marcys Erica 393 #				
Marcys 12 Erica 32-2	Redland Emblazon 2021	Birth Wt			
	Marcys 07 Erica 33-7	70			
4M Ace 709	Musgrave Aviator #	205 Wt			
Marcys 14 Stacked Lady 966	KGM Enchantress 4054	624			
Marcys 14 Stacked Lady 72-4	Sitz Upward 307R #	Dam Prod			
	Marcys 10 Stacked Lady 17-0	2 WR 102			
CED	BW	WW	YW	Milk	Doc
+14	-1.2	+67	+112	+26	+10
CW	Marb	RE	SM	SB	SC
+52	+0.44	+0.92	+75	+132	+246

- Recommended for heifers and cows
- Moderate framed and very complete he has great muscle and is clean sheathed. Dam records 2 @94 BWR

# YEARLING BULLS

## LOTS 53 - 54

The result of the successful blending of the famous Canadian sire with Marcys Erica 337 who became the all-time record-selling cow in the more than seventy-five year history of the Marcy Angus program when she topped the 2021 Marcy Female Sale at \$65,000 as the featured Lot 1 cow to Voss Angus of Iowa.

The outstanding dam of these bulls records a progeny weaning ratio of 108 on six natural calves, and she also produced the second top-selling bull of the 2017 Marcy Sale as well as the Marcy junior herd sire, Marcys Full Bore 015, who went on to be the \$17,500 top-selling bull of the 2022 Marcy Production Sale.

The dam of these bulls also has the distinction of being a full sister to the one-of-a-kind proven sire Marcys Scale Crusher who sired the top-selling sire group in Marcy annual production sales for eight consecutive years as well as the record-selling sire group of the entire 2021 sale season and numerous sales in the nation in 2021 and 2022.

The Pathfinder granddam balanced a progeny birth ratio of 93 with a progeny weaning ratio of 108 on ten natural calves, backed by one of the oldest and most prolific cow families in the Marcy herd.



## LOT 53

### Marcys Coalition 21

Bull 1/31/22 reg: +20414188 tattoo: 21

HF Syndicate 213Z  
U-2 Coalition 206C  
U2 Erelite 109Z

Connealy Consensus 7229 #  
HF Miss Blackcap 27R  
Young Dale Xclusive 25X  
U-2 Erelite 1X

Sitz Upward 307R #  
Marcys Erica 337  
Marcys Erica 393 #

Connealy Onward #  
Sitz Henrietta Pride 81M  
Leachman Right Time #  
G Marcy Erica 118

CED	BW	WW	YW	Milk	Doc
+9	+1.3	+56	+103	+38	+22
CW	Marb	RE	SM	SB	SC
+48	+0.32	+0.59	+71	+128	+237

Calving Ease
★
Birth Wt
ET
205 Wt
ET
Dam Prod
6 WR 108
3 YR 103

ANGUS GS  
Powered by Neogen GenesCopk

- Recommended for large framed heifers and cows.
- Flush brother to lot 54

## LOT 54

### Marcys Coalition 222

Bull 1/26/22 reg: +20414195 tattoo: 222  
Sire U-2 Coalition 206C Dam Marcys Erica 337

CED	BW	WW	YW	Milk	Doc
+3	+2.7	+76	+135	+31	+22
CW	Marb	RE	SM	SB	SC
+72	+0.54	+0.73	+85	+165	+299

Calving Ease
ET
Birth Wt
ET
205 Wt
ET

ANGUS GS  
Powered by Neogen GenesCopk

- A stomp down, flat out herd bull with the performance, pedigree, and maternal strength to complement most any program.
- Flush brother to lot 53

### Marcys-Erica-337



Dam of Lots 53 and 54

# YEARLING BULLS



**LOT 55** **Marcys Coalition 23**  
 Bull 1/29/22 reg: +20414189 tattoo: 23

HF Syndicate 213Z	Connealy Consensus 7229 #	Calving Ease
U-2 Coalition 206C	HF Miss Blackcap 27R	Birth Wt
U2 Erelite 109Z	Young Dale Xclusive 25X	ET
	U-2 Erelite 1X	205 Wt
Sitz Upward 307R #	Connealy Onward #	ET
Marcys Erica 221 #	Sitz Henrietta Pride 81M	Dam Prod
Marcys Erica 867 #	Baldrige Kaboom K243 KCF #	5 WR 105
	Marcys Erica 629	5 YR 107

CED	BW	WW	YW	Milk	Doc
+8	+1.7	+74	+133	+21	+39
CW	Marb	RE	\$M	\$B	\$C
+56	+0.65	+0.46	+87	+147	+278

ANGUSGS  
Powered by Neogen GenScan

**LOT 57** **Marcys Smooth Bore 282**  
 Bull 1/30/22 reg: 20410217 tattoo: 282

Spring Cove Reno 4021	KM Broken Bow 002 #	Calving Ease
Marcys Smooth Bore 030	Spring Cove Liza 021	★★★
Marcys Erica 221 #	Sitz Upward 307R #	Birth Wt
	Marcys Erica 867 #	52
SCC Jerry Jeff	Baldrige Waylon W34 #	205 Wt
Marcys Erica 0160	RR Escort 6392	774
Marcys Erica 388	Sitz Upward 307R #	Dam Prod
	Marcys Erica 6128	1 WR 115

CED	BW	WW	YW	Milk	Doc
+12	-2.7	+69	+120	+33	+18
CW	Marb	RE	\$M	\$B	\$C
+52	+0.78	+0.23	+65	+135	+240

ANGUSGS  
Powered by Neogen GenScan

• Flush brother to lot 56

- Recommended for heifers and cows.
- An outstanding heifer bull, this eye appealing, long bodied bull is really well put together.
- Great type and kind with a strong top and rear-end.

**LOT 56** **Marcys Coalition 223**  
 Bull 1/30/22 reg: +20414196 tattoo: 223

Sire U-2 Coalition 206C	Dam Marcys Erica 221 #	Calving Ease
		Birth Wt
		ET
		205 Wt
		ET

CED	BW	WW	YW	Milk	Doc
+3	+2.8	+63	+122	+30	+34
CW	Marb	RE	\$M	\$B	\$C
+46	+0.45	+0.79	+67	+141	+250

ANGUSGS  
Powered by Neogen GenScan

• Flush brother to lot 55

**LOT 58** **Marcys Smooth Bore 2144**  
 Bull 2/20/22 reg: 20410228 tattoo: 2144

Spring Cove Reno 4021	KM Broken Bow 002 #	Calving Ease
Marcys Smooth Bore 030	Spring Cove Liza 021	★★★
Marcys Erica 221 #	Sitz Upward 307R #	Birth Wt
	Marcys Erica 867 #	75
Marcys Scale Breaker N Plus	Marcys Scale Crusher	205 Wt
Marcys Ethelda 0146	Marcys Treasure 227 #	565
Marcys Ethelda 7158 #	Marcys Game Time	Dam Prod
	Marcys Ethelda 5107	1 WR 84

CED	BW	WW	YW	Milk	Doc
+7	+1.6	+66	+112	+19	+13
CW	Marb	RE	\$M	\$B	\$C
+41	+0.41	+0.62	+45	+121	+202

ANGUSGS  
Powered by Neogen GenScan

- Recommended for heifers and cows.
- This bull has excellent type and is very complete

Marcys-Erica-221



Marcys Erica 221 is the dam of lots 55 & 56. She is the dam of Marcys Smooth Bore 030, the highest IMF bull ever measured by Sandhills ultrasound. A 2nd generation pathfinder female that descends from 4 generations of ET donors. One of the most powerful growth, best footed, quality uddered, maternal bloodlines we have produced. These bulls are stout, powerful and maternal.

Marcys Smooth Bore 030



# YEARLING BULLS



*These Tahoe sons are the type of bull that people are always seeking. Cattle with extra dimension and performance that can work on heifers and as they get older, be powerful and good enough to use on cows without giving up dollars on the scale.*

**59** **Marcys Tahoe 252**  
 Bull 1/19/22 reg: 20411864 tattoo: 252

Tehama Upward Y238	Sitz Upward 307R #	Calving Ease
<b>Tehama Tahoe B767 #</b>	Tehama Elite Blackbird T735	★
Tehama Mary Blackbird Y684	S A V Final Answer 0035 #	Birth Wt
	Tehama Mary Blackbird T073	<b>68</b>
		205 Wt
Marcys Scale Crusher	Sitz Upward 307R #	<b>777</b>
<b>Marcys Pride 0101</b>	Marcys Erica 393 #	Dam Prod
Marcys Pride 6102	Lisco No Question 802	<b>1 WR 116</b>
	Marcys Pride 412	

CED	BW	WW	YW	Milk	Doc
<b>+6</b>	<b>+0.4</b>	<b>+81</b>	<b>+133</b>	<b>+22</b>	<b>+34</b>
CW	Marb	RE	SM	SB	SC
<b>+58</b>	<b>+0.61</b>	<b>+0.72</b>	<b>+86</b>	<b>+143</b>	<b>+271</b>

**ANGUS**GS  
 Powered by Neogen Genesock

- Recommended for larger framed heifers
- A flat out stud he puts it all together.
- A thumper that is long, deep and stout in an attractive wide based light birth weight package

**61** **Marcys Tahoe 268**  
 Bull 1/23/22 reg: 20411860 tattoo: 268

Tehama Upward Y238	Sitz Upward 307R #	Calving Ease
<b>Tehama Tahoe B767 #</b>	Tehama Elite Blackbird T735	★
Tehama Mary Blackbird Y684	S A V Final Answer 0035 #	Birth Wt
	Tehama Mary Blackbird T073	<b>70</b>
		205 Wt
Marcys Scale Breaker N Plus	Marcys Scale Crusher	<b>730</b>
<b>Marcys Erica 0144</b>	Marcys Treasure 227 #	Dam Prod
Marcys Erica 725	Sitz 4 Aces 4551 #	<b>1 WR 109</b>
	Marcys Erica 221 #	

CED	BW	WW	YW	Milk	Doc
<b>+5</b>	<b>+1.5</b>	<b>+80</b>	<b>+137</b>	<b>+29</b>	<b>+21</b>
CW	Marb	RE	SM	SB	SC
<b>+64</b>	<b>+0.44</b>	<b>+0.97</b>	<b>+80</b>	<b>+154</b>	<b>+280</b>

**ANGUS**GS  
 Powered by Neogen Genesock

- Recommended for large framed heifers and cows
- This brick has great fleshing ability and rib.
- He is a triple cheese burger with a great rear end. His dam records 1@ 90 BWR so he will probably work on heifers for some.

**60** **Marcys Tahoe 284**  
 Bull 1/31/22 reg: 20411868 tattoo: 284

Tehama Upward Y238	Sitz Upward 307R #	Calving Ease
<b>Tehama Tahoe B767 #</b>	Tehama Elite Blackbird T735	★★★
Tehama Mary Blackbird Y684	S A V Final Answer 0035 #	Birth Wt
	Tehama Mary Blackbird T073	<b>72</b>
		205 Wt
Marcys Scale Crusher	Sitz Upward 307R #	<b>637</b>
<b>Marcys Pride 03</b>	Marcys Erica 393 #	Dam Prod
Marcys Pride 41	Leachman Right Time #	<b>1 WR 95</b>
	Marcys Pride 419	

CED	BW	WW	YW	Milk	Doc
<b>+11</b>	<b>+0.8</b>	<b>+75</b>	<b>+127</b>	<b>+37</b>	<b>+19</b>
CW	Marb	RE	SM	SB	SC
<b>+58</b>	<b>+0.57</b>	<b>+0.72</b>	<b>+95</b>	<b>+145</b>	<b>+283</b>

**ANGUS**GS  
 Powered by Neogen Genesock

- Recommended for heifers and cows.
- Stylish bull with good muscle, he is long and clean sheathed.
- Dam is a full sister to Marcys Crusher 022

**62** **Marcys Tahoe 258**  
 Bull 1/21/22 reg: 20411857 tattoo: 258

Tehama Upward Y238	Sitz Upward 307R #	Calving Ease
<b>Tehama Tahoe B767 #</b>	Tehama Elite Blackbird T735	★
Tehama Mary Blackbird Y684	S A V Final Answer 0035 #	Birth Wt
	Tehama Mary Blackbird T073	<b>73</b>
		205 Wt
Marcys Scale Breaker N Plus	Marcys Scale Crusher	<b>809</b>
<b>Marcys Pride 0164</b>	Marcys Treasure 227 #	Dam Prod
Marcys Pride 71	Baldridge Waylon W34 #	<b>1 WR 120</b>
	Marcys 04 Pride 171-4	

CED	BW	WW	YW	Milk	Doc
<b>+7</b>	<b>+1.1</b>	<b>+91</b>	<b>+152</b>	<b>+27</b>	<b>+31</b>
CW	Marb	RE	SM	SB	SC
<b>+60</b>	<b>+0.6</b>	<b>+0.79</b>	<b>+66</b>	<b>+144</b>	<b>+253</b>

**ANGUS**GS  
 Powered by Neogen Genesock

- Recommended for large framed heifers and cows.
- A long, big bodied, clean sheathed bull.
- Sharp made, he looks like a calving ease bull with power

# YEARLING BULLS

LOT **63**

## Marcys Tahoe 270

Bull 1/24/22 reg: 20411859 tattoo: 270

Tehama Upward Y238  
**Tehama Tahoe B767 #**  
 Tehama Mary Blackbird Y684

Sitz Upward 307R #  
 Tehama Elite Blackbird T735  
 S A V Final Answer 0035 #  
 Tehama Mary Blackbird T073

Marcys Scale Crusher 8164  
**Marcys Pride 0151**  
 Marcys Pride 75

Marcys Scale Crusher  
 Marcys Ethelda 439 #  
 Baldrige Waylon W34 #  
 Marcys 04 Pride 171-4

CED	BW	WW	YW	Milk	Doc
+8	+1.3	+90	+152	+24	+32
CW	Marb	RE	SM	SB	SC
+63	+0.5	+0.91	+95	+146	+284

Calving Ease
★
Birth Wt
87
205 Wt
785
Dam Prod
1 WR 117

**ANGUS**  
Powered by Neogen Genesock

- Recommended for large framed heifers and cows.
- This bull is very deep sided, big scrotaled and clean sheathed.



LOT **64**

## Marcys Tahoe 265

Bull 1/23/22 reg: 20411863 tattoo: 265

Tehama Upward Y238  
**Tehama Tahoe B767 #**  
 Tehama Mary Blackbird Y684

Sitz Upward 307R #  
 Tehama Elite Blackbird T735  
 S A V Final Answer 0035 #  
 Tehama Mary Blackbird T073

BUBS Southern Charm AA31  
**Marcys Erica 0113**  
 Marcys Erica 587 #

Silveiras Conversion 8064  
 Hickory Hill Erica 009  
 Marcys Scale Crusher  
 Marcys Erica 0123

CED	BW	WW	YW	Milk	Doc
+3	+3	+76	+131	+28	+19
CW	Marb	RE	SM	SB	SC
+54	+0.7	+0.94	+67	+155	+268

Calving Ease
★
Birth Wt
94
205 Wt
628
Dam Prod
1 WR 93

**ANGUS**  
Powered by Neogen Genesock

- A long, stout and upstanding bull
- Lots of rib and power, in this big scrotal bull
- His prolific Scale Crusher grandam is an ET donor for John Anderson



LOT **65**

## Marcys Tahoe 277

Bull 1/28/22 reg: 20411856 tattoo: 277

Tehama Upward Y238  
**Tehama Tahoe B767 #**  
 Tehama Mary Blackbird Y684

Sitz Upward 307R #  
 Tehama Elite Blackbird T735  
 S A V Final Answer 0035 #  
 Tehama Mary Blackbird T073

SAT Prosecutor 8105  
**Marcys Ethelda E 0177**  
 Marcys Ethelda E 8207

Brooking Prosecutor 222 #  
 Marcys Ethelda 257 #  
 Marcys Scale Breaker N Plus  
 Marcys Ethelda E 4166

CED	BW	WW	YW	Milk	Doc
+2	+3.2	+85	+133	+30	+13
CW	Marb	RE	SM	SB	SC
+56	+0.73	+0.76	+83	+143	+268

Calving Ease
★
Birth Wt
98
205 Wt
774
Dam Prod
1 WR 115

**ANGUS**  
Powered by Neogen Genesock

- One of the top performance bulls in he sale his progeny should press the scales.
- Deep, long & good with a big hip.

LOT **66**

## Marcys Tahoe 259

Bull 1/22/22 reg: 20411866 tattoo: 259

Tehama Upward Y238  
**Tehama Tahoe B767 #**  
 Tehama Mary Blackbird Y684

Sitz Upward 307R #  
 Tehama Elite Blackbird T735  
 S A V Final Answer 0035 #  
 Tehama Mary Blackbird T073

HA Prime Cut 4493  
**Marcys Erica 037**  
 Marcys Erica 896

Vermilion Sirlain  
 HA Miss Blackcap 9127  
 S Summit 956 #  
 Marcys Erica 650

CED	BW	WW	YW	Milk	Doc
+12	-0.7	+74	+115	+28	+24
CW	Marb	RE	SM	SB	SC
+41	+0.77	+0.58	+81	+125	+243

Calving Ease
★★★
Birth Wt
72
205 Wt
770
Dam Prod
1 WR 115

**ANGUS**  
Powered by Neogen Genesock

- Recommended for heifers and cows.
- This is a long bull with extra capacity.
- He has a big hip, wide butt, and is easy fleshing.

LOT **67**

## Marcys Tahoe 251

Bull 1/18/22 reg: 20411861 tattoo: 251

Tehama Upward Y238  
**Tehama Tahoe B767 #**  
 Tehama Mary Blackbird Y684

Sitz Upward 307R #  
 Tehama Elite Blackbird T735  
 S A V Final Answer 0035 #  
 Tehama Mary Blackbird T073

Marcys Spur 8107  
**Marcys Pride 0131**  
 Marcys Pride 737

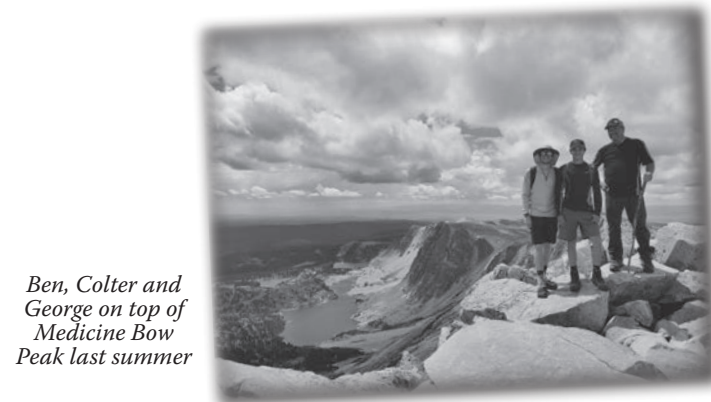
Connealy Spur #  
 Marcys Erica 221 #  
 Marcys Scale Crusher  
 Marcys Pride 067

CED	BW	WW	YW	Milk	Doc
+9	+0.6	+77	+127	+35	+22
CW	Marb	RE	SM	SB	SC
+51	+0.53	+0.74	+105	+127	+270

Calving Ease
★★★
Birth Wt
78
205 Wt
733
Dam Prod
1 WR 109

**ANGUS**  
Powered by Neogen Genesock

- Recommended for heifers and cows.
- Out of a great young Spur bred female.
- These Tahoe sons have as much performance as you will find in a calving ease bull.



Ben, Colter and George on top of Medicine Bow Peak last summer



# YEARLING BULLS

## LT-Converse-8011



Daughters in production out of Converse will be the kind that keep us in business. They have super udders, fleshing ability, & docility.



**68** **Marcys Converse 244**  
 Bull 1/21/22 reg: 20430227 tattoo: 244

Connealy Confidence Plus # <b>LT Converse 8011</b> LT Nordica 6066 #	Connealy Confidence 0100 # Elbanna of Conanga 1209 Koupal Advance 28 # LT Nordica 3278 #	<b>Calving Ease</b> ★★★			
HA Prime Cut 4493 <b>Marcys Misty 0125</b> Marcys Misty 4137 #	Vermilion Sirlain HA Miss Blackcap 9127 Sitz 4 Aces 4551 # Marcys Misty 632 #	<b>Birth Wt</b> 59			
		<b>205 Wt</b> na			
		<b>Dam Prod</b> Dam Prod			
<b>CED</b>	<b>BW</b>	<b>WW</b>	<b>YW</b>	<b>Milk</b>	<b>Doc</b>
+10	+0.4	+66	+105	+30	+19
<b>CW</b>	<b>Marb</b>	<b>RE</b>	<b>SM</b>	<b>SB</b>	<b>SC</b>
+38	+0.69	+0.77	+74	+127	+239

**ANGUS**GS  
Powered by Neogen GenesSeek

- Recommended for heifers and cows.
- A sharp smooth made bull that should calve easily and leave great females.
- He was a twin raised on a foster dam.

**71** **Marcys Converse 269**  
 Bull 1/24/22 reg: 20411596 tattoo: 269

Connealy Confidence Plus # <b>LT Converse 8011</b> LT Nordica 6066 #	Connealy Confidence 0100 # Elbanna of Conanga 1209 Koupal Advance 28 # LT Nordica 3278 #	<b>Calving Ease</b> ★★★			
Marcys Scale Crusher 8164 <b>Marcys Erica 0156</b> Marcys Erica 6115 #	Marcys Scale Crusher Marcys Ethelda 439 # Marcys Packer 422 Marcys Erica 4152	<b>Birth Wt</b> 78			
		<b>205 Wt</b> 770			
		<b>Dam Prod</b> Dam Prod			
<b>CED</b>	<b>BW</b>	<b>WW</b>	<b>YW</b>	<b>Milk</b>	<b>Doc</b>
+13	-0.1	+76	+122	+33	+22
<b>CW</b>	<b>Marb</b>	<b>RE</b>	<b>SM</b>	<b>SB</b>	<b>SC</b>
+55	+0.65	+0.36	+79	+132	+250

**ANGUS**GS  
Powered by Neogen GenesSeek

- Recommended for heifers and cows.
- An outstanding bull with the combination of smoothness and muscle thats hard to find.

**69** **Marcys Converse 276**  
 Bull 1/27/22 reg: 20411589 tattoo: 276

Connealy Confidence Plus # <b>LT Converse 8011</b> LT Nordica 6066 #	Connealy Confidence 0100 # Elbanna of Conanga 1209 Koupal Advance 28 # LT Nordica 3278 #	<b>Calving Ease</b> ★★★			
Connealy Spur # <b>Marcys Erica 086</b> Marcys Erica 597	Connealy Stimulus 8419 # Jazza of Conanga 8594 # Marcys Scale Crusher Marcys Erica 97	<b>Birth Wt</b> 73			
		<b>205 Wt</b> 633			
		<b>Dam Prod</b> Dam Prod			
<b>CED</b>	<b>BW</b>	<b>WW</b>	<b>YW</b>	<b>Milk</b>	<b>Doc</b>
+15	+0.6	+61	+102	+30	+24
<b>CW</b>	<b>Marb</b>	<b>RE</b>	<b>SM</b>	<b>SB</b>	<b>SC</b>
+35	+0.76	+0.53	+86	+121	+243

**ANGUS**GS  
Powered by Neogen GenesSeek

- A very typey bull that will calve easily.
- Has a big, wide top, nice quarter and is easy doing.

**72** **Marcys Converse 279**  
 Bull 1/28/22 reg: 20411595 tattoo: 279

Connealy Confidence Plus # <b>LT Converse 8011</b> LT Nordica 6066 #	Connealy Confidence 0100 # Elbanna of Conanga 1209 Koupal Advance 28 # LT Nordica 3278 #	<b>Calving Ease</b> ★★★			
Casino Bomber N33 <b>Marcys Erica 054</b> Marcys Erica 8115	KM Broken Bow 002 # Casino Annie K48 # Marcys Scale Breaker N Plus Marcys Erica 491	<b>Birth Wt</b> 85			
		<b>205 Wt</b> 646			
		<b>Dam Prod</b> Dam Prod			
<b>CED</b>	<b>BW</b>	<b>WW</b>	<b>YW</b>	<b>Milk</b>	<b>Doc</b>
+8	-0.1	+64	+116	+31	+24
<b>CW</b>	<b>Marb</b>	<b>RE</b>	<b>SM</b>	<b>SB</b>	<b>SC</b>
+42	+0.74	+0.63	+64	+133	+237

**ANGUS**GS  
Powered by Neogen GenesSeek

- Recommended for heifers and cows.
- There is a lot to like with this long bodied, clean sheathed, big scrotal, bull.

**70** **Marcys Converse 267**  
 Bull 1/23/22 reg: 20411597 tattoo: 267

Connealy Confidence Plus # <b>LT Converse 8011</b> LT Nordica 6066 #	Connealy Confidence 0100 # Elbanna of Conanga 1209 Koupal Advance 28 # LT Nordica 3278 #	<b>Calving Ease</b> ★			
Marcys Scale Crusher <b>Marcys Misty 0106</b> Marcys Misty 627	Sitz Upward 307R # Marcys Erica 393 # Lisco No Question 802 Marcys Misty 4137 #	<b>Birth Wt</b> 90			
		<b>205 Wt</b> 650			
		<b>Dam Prod</b> Dam Prod			
<b>CED</b>	<b>BW</b>	<b>WW</b>	<b>YW</b>	<b>Milk</b>	<b>Doc</b>
+9	+2.7	+68	+114	+21	+23
<b>CW</b>	<b>Marb</b>	<b>RE</b>	<b>SM</b>	<b>SB</b>	<b>SC</b>
+44	+0.88	+0.54	+84	+135	+259

**ANGUS**GS  
Powered by Neogen GenesSeek

- Recommended for large framed heifers and cows.
- A long, very correct bull that is deep ribbed and easy fleshing.

## LT-Elite-Lady-0222



2 year old LT Converse daughter in production. This cow traces back to the Elite Lady cow that Brent Thiel purchased from us in the 1990s.

# YEARLING BULLS



**LOT 73**

## Marcys Resilient 281

Bull 1/30/22 reg: 20411901 tattoo: 281

Sitz Stellar 726D  
Sitz Resilient 10208  
Sitz Miss Burgess 1856

Marcys Scale Crusher  
Marcys Misty 758  
Marcys Misty 975

Mohnen Substantial 272 #  
SITZ Pride 200B  
Sitz Top Game 561X #  
Sitz Miss Burgess 4381  
Sitz Upward 307R #  
Marcys Erica 393 #  
Redland Emblazon 2021  
Marcys Misty 632 #

Calving Ease
★★★
Birth Wt
82
205 Wt
714
Dam Prod
3 WR 105

CED	BW	WW	YW	Milk	Doc
+7	-0.1	+85	+146	+30	+16
CW	Marb	RE	SM	SB	SC
+50	+0.61	+0.64	+98	+124	+259

ANGUSGS  
Powered by Nogen GenCheck

- Recommended for heifers and cows.
- Deep bodied with a lot of muscle he is a soggy, easy doing smooth made bull.

**LOT 74**

## Marcys Resilient 292

Bull 2/3/22 reg: 20411904 tattoo: 292

Sitz Stellar 726D  
Sitz Resilient 10208  
Sitz Miss Burgess 1856

Marcys Scale Crusher  
Marcys Erica 666  
Marcys Erica 313

Mohnen Substantial 272 #  
SITZ Pride 200B  
Sitz Top Game 561X #  
Sitz Miss Burgess 4381  
Sitz Upward 307R #  
Marcys Erica 393 #  
Marcys Freightliner 879  
Marcys Erica 113

Calving Ease
★★★
Birth Wt
80
205 Wt
660
Dam Prod
5 WR 99
3 YR 101

CED	BW	WW	YW	Milk	Doc
+11	-0.3	+64	+108	+27	+22
CW	Marb	RE	SM	SB	SC
+40	+0.46	+0.5	+78	+114	+226

ANGUSGS  
Powered by Nogen GenCheck

- Recommended for heifers and cows.
- A long, smooth easy doing scamp he is moderate framed with a big wide top.

*Body mass, muscle, thickness, and volume with that extra base width and dimension produce females that work for us in dry cow country. Cows with proven volume and fleshing ability have proven their worth time after time by producing brood cows that stay in the herd year after year. Phenotype always rules in a real-world environment.*

**LOT 75**

## Marcy Resilient 293

Bull 2/4/22 reg: 20477001 tattoo: 293

Sitz Stellar 726D  
Sitz Resilient 10208  
Sitz Miss Burgess 1856

Redland Emblazon 2021  
Marcys Erica 4120  
Marcys Erica 181 #

Mohnen Substantial 272 #  
SITZ Pride 200B  
Sitz Top Game 561X #  
Sitz Miss Burgess 4381  
O C C Emblazon 854E #  
Redland Blackcap 1289  
G Marcys Widetrack  
G Marcys Erica 440 #

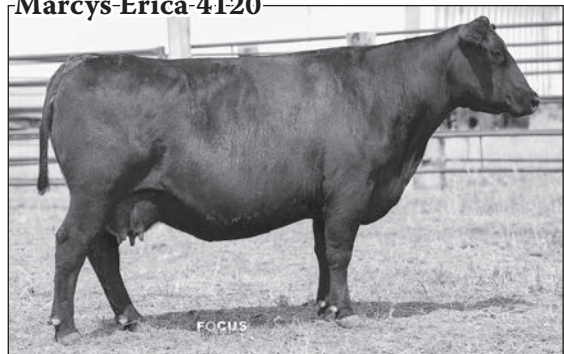
Calving Ease
★★★
Birth Wt
72
205 Wt
602
Dam Prod
7 WR 97
4 YR 99

CED	BW	WW	YW	Milk	Doc
+9	-0.1	+58	+91	+23	+17
CW	Marb	RE	SM	SB	SC
+18	+0.69	+0.46	+78	+95	+201

ANGUSGS  
Powered by Nogen GenCheck

- Recommended for heifers and cows.
- A moderate, easy doing bull with great fleshing ability.
- Lots of rib, good scrotal and thick butted out of a really good, proven cow.

## Marcys-Erica 4120



Dam of Lot 75 and 141

# YEARLING BULLS

**LOT 76**

## Marcys Resilient 2112

Bull 2/8/22 reg: 20411898 tattoo: 2112

Sitz Stellar 726D  
Sitz Resilient 10208  
Sitz Miss Burgess 1856

Mohnen Substantial 272 #  
SITZ Pride 200B  
Sitz Top Game 561X #  
Sitz Miss Burgess 4381

Connealy Spur #  
Marcys Erica 827  
Marcys Erica 393 #

Connealy Stimulus 8419 #  
Jazza of Conanga 8594 #  
Leachman Right Time #  
G Marcy Erica 118

CED	BW	WW	YW	Milk	Doc
<b>+4</b>	<b>+1.6</b>	<b>+66</b>	<b>+107</b>	<b>+23</b>	<b>+18</b>
CW	Marb	RE	SM	SB	SC
<b>+45</b>	<b>+0.69</b>	<b>+0.49</b>	<b>+84</b>	<b>+136</b>	<b>+260</b>

Calving Ease
★★★
Birth Wt
<b>80</b>
205 Wt
<b>638</b>
Dam Prod
<b>3 WR 98</b>
<b>1 YR 92</b>

- Recommended for heifers and cows.
- A smooth, sharp fronted bull. He should work on heifers for most.
- Easy fleshing and moderate framed.



**LOT 77**

## Marcys Resilient 2120

Bull 2/11/22 reg: 20411900 tattoo: 2120

Sitz Stellar 726D  
Sitz Resilient 10208  
Sitz Miss Burgess 1856

Mohnen Substantial 272 #  
SITZ Pride 200B  
Sitz Top Game 561X #  
Sitz Miss Burgess 4381

S Summit 956 #  
Marcys Erica 742  
Marcys Erica 585

GDAR Game Day 449 #  
S Pride Anna 709 #  
Marcys Scale Crusher  
Marcys Erica 98

CED	BW	WW	YW	Milk	Doc
<b>+4</b>	<b>+2.2</b>	<b>+85</b>	<b>+140</b>	<b>+30</b>	<b>+11</b>
CW	Marb	RE	SM	SB	SC
<b>+57</b>	<b>+0.44</b>	<b>+0.6</b>	<b>+81</b>	<b>+124</b>	<b>+242</b>

Calving Ease
★★★
Birth Wt
<b>86</b>
205 Wt
<b>724</b>
Dam Prod
<b>4 WR 104</b>
<b>3 YR 104</b>

- This long bodied bull is very easy to like.
- Very stylish bull and put together well.



**LOT 78**

## Marcys Grand Finale 2132

Bull 2/15/22 reg: 20432535 tattoo: 2132

Lisco Finale 902  
Lisco Grand Finale 4103  
Lisco Lass 201 #

S A V Final Answer 0035 #  
LA Shoshone Lass 4101 #  
Redland Emblazon 2134 #  
Lisco Lass 812 #

U-2 Coalition 206C  
M Diamond 20 Emma E 400  
M Diamond Emma E 396

HF Syndicate 213Z  
U2 Erelite 109Z  
Sitz 4 Aces 4551 #  
M Diamond Emma E 111 #

CED	BW	WW	YW	Milk	Doc
<b>+11</b>	<b>-0.1</b>	<b>+68</b>	<b>+125</b>	<b>+20</b>	<b>+24</b>
CW	Marb	RE	SM	SB	SC
<b>+53</b>	<b>+0.98</b>	<b>+0.67</b>	<b>+85</b>	<b>+162</b>	<b>+295</b>

Calving Ease
★★★
Birth Wt
<b>67</b>
205 Wt
<b>661</b>
Dam Prod
<b>1 WR 98</b>

- Recommended for heifers and cows.
- This complete young bull is really nice with a lot of rib.
- He stands square with big, wide top.



# YEARLING BULLS



Flagstone's sire group is impressive. Big stout cattle with a strong top, big scrotal, great feet and docility. Maternal Angus with the muscle to fit our program.

His progeny rank in the top 1 % of the breed for docility, marbling and foot structure.

Baldrige-Flagstone-F411



**79** **Marcys Flagstone 287**  
 Bull 2/2/22 reg: 20411713 tattoo: 287

Hoover No Doubt  
**Baldrige Flagstone F411**  
 Baldrige Isabel Y69

BUBS Southern Charm AA31  
**Marcys Erica 978**  
 Marcys Erica 587 #

Mogck Bullseye #  
 Miss Blackcap Ellston J2  
 Styles Upgrade J59 #  
 Baldrige Isabel T935

Silveiras Conversion 8064  
 Hickory Hill Erica 009  
 Marcys Scale Crusher  
 Marcys Erica 0123

Calving Ease					
Birth Wt					
87					
205 Wt					
671					
Dam Prod					
2 WR 102					
1 YR 108					
CED	BW	WW	YW	Milk	Doc
-1	+3	+72	+132	+29	+30
CW	Marb	RE	\$M	\$B	\$C
+57	+1.13	+0.79	+72	+175	+299

**ANGUSGS**  
 Powered by Nogen GenCoat

- A big powerful long bodied, heavy muscled herd bull.
- Out of a standout Southern Charm daughter, the donor granddam by Marcys Scale Crusher was a feature in our dispersion sale.

Marcys-Erica-587



Granddam of Lot 79 and an ET donor for John Anderson.  
 This productive female records 5@108 WR

**80** **Marcys Flagstone 2119**  
 Bull 2/10/22 reg: 20411712 tattoo: 2119

Hoover No Doubt  
**Baldrige Flagstone F411**  
 Baldrige Isabel Y69

BUBS Southern Charm AA31  
**Marcys Erica 9103**  
 Marcys Erica 4173

Mogck Bullseye #  
 Miss Blackcap Ellston J2  
 Styles Upgrade J59 #  
 Baldrige Isabel T935

Silveiras Conversion 8064  
 Hickory Hill Erica 009  
 Marcys Oscar 245  
 Marcys Erica 113

Calving Ease					
Birth Wt					
93					
205 Wt					
757					
Dam Prod					
2 WR 114					
1 YR 107					
CED	BW	WW	YW	Milk	Doc
-4	+4.2	+79	+138	+28	+19
CW	Marb	RE	\$M	\$B	\$C
+64	+0.41	+0.86	+68	+148	+260

**ANGUSGS**  
 Powered by Nogen GenCoat

- Big, stout, and powerful, this long, big topped, square hipped, bull will be a sale day favorite.
- Dam is a superb maternal female.

**81** **Marcys Flagstone 2103**  
 Bull 2/6/22 reg: 20411834 tattoo: 2103

Hoover No Doubt  
**Baldrige Flagstone F411**  
 Baldrige Isabel Y69

Marcys Scale Crusher  
**Marcys Pride 737**  
 Marcys Pride 067

Mogck Bullseye #  
 Miss Blackcap Ellston J2  
 Styles Upgrade J59 #  
 Baldrige Isabel T935

Sitz Upward 307R #  
 Marcys Erica 393 #  
 Redland Emblazon 2021  
 Marcys Pride 264 #

Calving Ease					
Birth Wt					
72					
205 Wt					
596					
Dam Prod					
3 WR 98					
2 YR 102					
CED	BW	WW	YW	Milk	Doc
+3	+2	+70	+123	+22	+30
CW	Marb	RE	\$M	\$B	\$C
+55	+0.41	+1.06	+71	+141	+254

**ANGUSGS**  
 Powered by Nogen GenCoat

- Complete bull, nice top, good length, clean sheathed, moves well.
- Here is an example where real data and genomics do not match. His dam records 3@90 BWR. He may work on heifers for some.

**82** **Marcys Flagstone 2108**  
 Bull 2/7/22 reg: 20411717 tattoo: 2108

Hoover No Doubt  
**Baldrige Flagstone F411**  
 Baldrige Isabel Y69

Marcys Scale Crusher  
**Marcys Erica 956**  
 Marcys Erica 051

Mogck Bullseye #  
 Miss Blackcap Ellston J2  
 Styles Upgrade J59 #  
 Baldrige Isabel T935

Sitz Upward 307R #  
 Marcys Erica 393 #  
 Redland Emblazon 2021  
 Marcys Erica 191

Calving Ease					
Birth Wt					
86					
205 Wt					
628					
Dam Prod					
2 WR 94					
1 YR 97					
CED	BW	WW	YW	Milk	Doc
+1	+2.6	+59	+101	+13	+21
CW	Marb	RE	\$M	\$B	\$C
+46	+0.84	+0.45	+71	+153	+269

**ANGUSGS**  
 Powered by Nogen GenCoat

- Great length with a big top, A thick rear end and big scrotal.



# YEARLING BULLS



**83** **Marcys Flagstone 297**  
 Bull 2/5/22 reg: 20411809 tattoo: 297

Hoover No Doubt  
**Baldrige Flagstone F411**  
 Baldrige Isabel Y69

Marcys Scale Crusher  
**Marcys Erica 84**  
 Marcys Erica 866 #

Mogck Bullseye #  
 Miss Blackcap Ellston J2  
 Styles Upgrade J59 #  
 Baldrige Isabel T935

Sitz Upward 307R #  
 Marcys Erica 393 #  
 Baldrige Kaboom K243 KCF #  
 Marcys Erica 629

CED	BW	WW	YW	Milk	Doc
+4	+2.6	+89	+152	+28	+27
CW	Marb	RE	SM	SB	SC
+86	+0.51	+0.97	+91	+181	+326

Calving Ease  
 Birth Wt: 82  
 205 Wt: 680  
 Dam Prod: 3 WR 105  
 2 YR 105

**ANGUS**  
 Powered by Neogen Genesock

- The bull puts it together in a great phenotype.
- His dam is one of 3 exceptional Scale Crusher full sisters out of the prolific Erica cow family. She records 3 calves @ 94 BWR.

**84** **Marcys Flagstone 2147**  
 Bull 2/25/22 reg: 20411796 tattoo: 2147

Hoover No Doubt  
**Baldrige Flagstone F411**  
 Baldrige Isabel Y69

Marcys Scale Crusher  
**Marcys 19 Ethelda E 90-9**  
 Marcys Ethelda E 98-1 #

Mogck Bullseye #  
 Miss Blackcap Ellston J2  
 Styles Upgrade J59 #  
 Baldrige Isabel T935

Sitz Upward 307R #  
 Marcys Erica 393 #  
 Connealy Tanker 736A  
 Marcys 08 Ethelda E 38-8

CED	BW	WW	YW	Milk	Doc
+6	+1.6	+72	+132	+27	+32
CW	Marb	RE	SM	SB	SC
+74	+0.31	+0.84	+94	+163	+305

Calving Ease  
 Birth Wt: 74  
 205 Wt: 642  
 Dam Prod: 2 WR 101  
 1 YR 95

**ANGUS**  
 Powered by Neogen Genesock

- A moderate framed bull that is stout, long and thick butted. Great cow family behind him, his dam sells as lot 136

**85** **Marcys Flagstone 288**  
 Bull 2/2/22 reg: 20411835 tattoo: 288

Hoover No Doubt  
**Baldrige Flagstone F411**  
 Baldrige Isabel Y69

Baldrige Waylon W34 #  
**Marcys Treasure 670**  
 Marcys Treasure 3160

Mogck Bullseye #  
 Miss Blackcap Ellston J2  
 Styles Upgrade J59 #  
 Baldrige Isabel T935

GAR-EGL Protege #  
 Baldrige Blackcap T163  
 Marcys Scale Crusher  
 Marcys Treasure 015

CED	BW	WW	YW	Milk	Doc
-7	+4.7	+86	+147	+26	+37
CW	Marb	RE	SM	SB	SC
+71	+0.83	+0.97	+82	+182	+318

Calving Ease  
 Birth Wt: 97  
 205 Wt: 672  
 Dam Prod: 4 WR 104  
 2 YR 103

**ANGUS**  
 Powered by Neogen Genesock

- Lots of muscle & fleshing ability in this thick, square made bull.
- Long bodied and docile with a big hip

**86** **Marcys Flagstone 2111**  
 Bull 2/8/22 reg: 20411508 tattoo: 2111

Hoover No Doubt  
**Baldrige Flagstone F411**  
 Baldrige Isabel Y69

Baldrige Waylon W34 #  
**Marcys Erica 64**  
 Marcys Erica 390

Mogck Bullseye #  
 Miss Blackcap Ellston J2  
 Styles Upgrade J59 #  
 Baldrige Isabel T935

GAR-EGL Protege #  
 Baldrige Blackcap T163  
 Leachman Right Time #  
 G Marcy Erica 118

CED	BW	WW	YW	Milk	Doc
+2	+2.6	+71	+121	+27	+36
CW	Marb	RE	SM	SB	SC
+40	+0.61	+0.31	+82	+112	+227

Calving Ease  
 Birth Wt: 93  
 205 Wt: 684  
 Dam Prod: 4 WR 102  
 2 YR 103

**ANGUS**  
 Powered by Neogen Genesock

- Deep ribbed, easy fleshing, and great type.
- A solid bull with great capacity.

**87** **Marcys Flagstone 2116**  
 Bull 2/9/22 reg: 20411829 tattoo: 2116

Hoover No Doubt  
**Baldrige Flagstone F411**  
 Baldrige Isabel Y69

Baldrige Waylon W34 #  
**Marcys Erica 77**  
 Marcys Erica 390

Mogck Bullseye #  
 Miss Blackcap Ellston J2  
 Styles Upgrade J59 #  
 Baldrige Isabel T935

GAR-EGL Protege #  
 Baldrige Blackcap T163  
 Leachman Right Time #  
 G Marcy Erica 118

CED	BW	WW	YW	Milk	Doc
+1	+3	+75	+123	+23	+28
CW	Marb	RE	SM	SB	SC
+50	+0.63	+0.44	+86	+134	+260

Calving Ease  
 Birth Wt: 102  
 205 Wt: 657  
 Dam Prod: 3 WR 100  
 2 YR 99

**ANGUS**  
 Powered by Neogen Genesock

- Long, clean and darn good like all the Flagstones.
- Docile with a long, wide, big hip.

**88** **Marcys Flagstone 291**  
 Bull 2/3/22 reg: 20411714 tattoo: 291

Hoover No Doubt  
**Baldrige Flagstone F411**  
 Baldrige Isabel Y69

Baldrige Conductor C794  
**Marcys Erica 9130**  
 Marcys Erica 638 #

Mogck Bullseye #  
 Miss Blackcap Ellston J2  
 Styles Upgrade J59 #  
 Baldrige Isabel T935

Baldrige Waylon W34 #  
 Baldrige Forever Lady T269  
 Marcys Scale Crusher  
 Marcys Erica 335

CED	BW	WW	YW	Milk	Doc
-3	+2.2	+76	+127	+26	+27
CW	Marb	RE	SM	SB	SC
+56	+0.97	+0.72	+84	+160	+292

Calving Ease  
 Birth Wt: 77  
 205 Wt: 585  
 Dam Prod: 2 WR 96  
 1 YR 103

**ANGUS**  
 Powered by Neogen Genesock

- Super type and kind, with this sharp fronted Flagstone son.
- Dam records 2BWR 92 he may work on heifers for some.

**89** **Marcys Flagstone 2106**  
 Bull 2/7/22 reg: 20411833 tattoo: 2106

Hoover No Doubt  
**Baldrige Flagstone F411**  
 Baldrige Isabel Y69

Marcys No Question 463  
**Marcys Erica 7150**  
 Marcys Erica 4111

Mogck Bullseye #  
 Miss Blackcap Ellston J2  
 Styles Upgrade J59 #  
 Baldrige Isabel T935

Lisco No Question 802  
 Marcys Erica 221 #  
 Marcys Scale Crusher  
 Marcys Erica 586

CED	BW	WW	YW	Milk	Doc
+7	+0.7	+66	+124	+25	+29
CW	Marb	RE	SM	SB	SC
+46	+0.7	+0.52	+84	+136	+260

Calving Ease  
 Birth Wt: 83  
 205 Wt: 643  
 Dam Prod: 4 WR 98  
 2 YR 93

**ANGUS**  
 Powered by Neogen Genesock

- Recommended for large framed heifers and cows.
- A long, easy doing bull with excellent type and a big scrotal that can really move.
- His dam records 4@95 BWR

# YEARLING BULLS

Marcys-Erica-337



Dam of Marcys Full Bore 015

Marcys Full Bore 015



The \$17,500 top-selling bull of the 2022 Marcy sale to Weber Angus Farm, NE



**LOT 90**

**Marcys Full Bore 2158**  
 Bull 3/1/22 reg: 20410236 tattoo: 2158

BUBS Southern Charm AA31						Silveiras Conversion 8064	Calving Ease
Marcys Full Bore 015						Hickory Hill Erica 009	Birth Wt
Marcys Erica 337						Sitz Upward 307R #	102
						Marcys Erica 393 #	205 Wt
Marcys Scale Crusher						Sitz Upward 307R #	651
Marcys Erica 83						Marcys Erica 393 #	Dam Prod
Marcys Erica 866 #						Baldrige Kaboom K243 KCF #	3 WR 103
						Marcys Erica 629	2 YR 102
CED	BW	WW	YW	Milk	Doc	ANGUS GS	
+1	+4.1	+74	+134	+24	+14	Powered by Neogen Genesock	
CW	Marb	RE	\$M	\$B	\$C		
+64	+0.77	+0.73	+58	+168	+276		

- Complete, nicely put together bull.
- Very long with good muscle, clean sheathed.
- His dam is 1 of 3 Scale Crusher full sisters that are excellent.

**LOT 92**

**Marcys Full Bore 2165**  
 Bull 3/12/22 reg: 20410239 tattoo: 2165

BUBS Southern Charm AA31						Silveiras Conversion 8064	Calving Ease
Marcys Full Bore 015						Hickory Hill Erica 009	Birth Wt
Marcys Erica 337						Sitz Upward 307R #	86
						Marcys Erica 393 #	205 Wt
Baldrige Conductor C794						Baldrige Waylon W34 #	635
Marcys Erica 734						Baldrige Forever Lady T269	Dam Prod
Marcys Erica 557						Leachman Right Time #	3 WR 99
						Marcys Erica 866 #	1 YR 104
CED	BW	WW	YW	Milk	Doc	ANGUS GS	
+4	+1.8	+75	+129	+33	+17	Powered by Neogen Genesock	
CW	Marb	RE	\$M	\$B	\$C		
+53	+0.63	+0.57	+75	+132	+246		

- This is a powerful bull!
- Good on his feet, clean sheathed, he's big topped and wide based.

**LOT 91**

**Marcys Full Bore 2171**  
 Bull 3/15/22 reg: 20410242 tattoo: 2171

BUBS Southern Charm AA31						Silveiras Conversion 8064	Calving Ease
Marcys Full Bore 015						Hickory Hill Erica 009	Birth Wt
Marcys Erica 337						Sitz Upward 307R #	80
						Marcys Erica 393 #	205 Wt
Marcys Scale Breaker N Plus						Marcys Scale Crusher	593
Marcys Pride 8191						Marcys Treasure 227 #	Dam Prod
Marcys Pride 067						Redland Emblazon 2021	3 WR 103
						Marcys Pride 264 #	2 YR 108
CED	BW	WW	YW	Milk	Doc	ANGUS GS	
+6	+0.8	+60	+103	+28	+17	Powered by Neogen Genesock	
CW	Marb	RE	\$M	\$B	\$C		
+53	+0.58	+0.65	+64	+147	+255		

- This type bull is put together well.
- Clean, free moving, and sharp.
- You won't be disappointed in the power, length, and pounds these Full Bore calves can add.

Marcys-Erica-557



Grandam of Lot 92, sold as an ET donor to Van Der Veen Angus, KS.

# YEARLING BULLS

**LOT 93** **Marcys Full Bore 2137**  
 Bull 2/18/22 reg: 20410225 tattoo: 2137

BUBS Southern Charm AA31 Silveiras Conversion 8064  
 Marcys Full Bore 015 Hickory Hill Erica 009  
 Marcys Erica 337 Sitz Upward 307R #  
 Marcys Erica 393 #

Marcys Game Time GDAR Game Day 449 #  
 Marcys Erica 390  
 Marcys Ethelda 7158 # Lisco No Question 802  
 Marcys Ethelda E 073

CED	BW	WW	YW	Milk	Doc
+5	+3	+64	+108	+23	+7
CW	Marb	RE	SM	SB	SC
+39	+0.55	+0.77	+67	+121	+224

Calving Ease  
 Birth Wt  
 90  
 205 Wt  
 682  
 Dam Prod  
 3 WR 105  
 2 YR 106  
**ANGUS**  
 Powered by Neogen Genesee

- Very complete bull that is put together well.
- Extra long bodied and a big scrotal.

**LOT 94** **Marcys Full Bore 2148**  
 Bull 2/25/22 reg: 20410230 tattoo: 2148

BUBS Southern Charm AA31 Silveiras Conversion 8064  
 Marcys Full Bore 015 Hickory Hill Erica 009  
 Marcys Erica 337 Sitz Upward 307R #  
 Marcys Erica 393 #

BUBS Southern Charm AA31 Silveiras Conversion 8064  
 Marcys Erica 9120 Hickory Hill Erica 009  
 Marcys Erica 650 Marcys Scale Crusher  
 Marcys Erica 375 #

CED	BW	WW	YW	Milk	Doc
-3	+4.7	+80	+133	+34	+12
CW	Marb	RE	SM	SB	SC
+52	+0.79	+0.73	+59	+145	+247

Calving Ease  
 Birth Wt  
 105  
 205 Wt  
 703  
 Dam Prod  
 1 WR 105  
**ANGUS**  
 Powered by Neogen Genesee

- This bull is a tank with a big top and long body.
- Deep ribbed, big scrotal, and a very complete bull from one end to the other.

**LOT 95** **Marcys Full Bore 2154**  
 Bull 2/28/22 reg: 20410234 tattoo: 2154

BUBS Southern Charm AA31 Silveiras Conversion 8064  
 Marcys Full Bore 015 Hickory Hill Erica 009  
 Marcys Erica 337 Sitz Upward 307R #  
 Marcys Erica 393 #

Marcys 4 Aces 641 Sitz 4 Aces 4551 #  
 Marcys Dutchess 8232 Marcys Misty 125  
 Marcys Dutchess 562 Leachman Right Time #  
 M Diamond Dutchess 528

CED	BW	WW	YW	Milk	Doc
+10	+0.3	+47	+81	+33	+9
CW	Marb	RE	SM	SB	SC
+26	+0.74	+0.71	+75	+122	+233

Calving Ease  
 Birth Wt  
 83  
 205 Wt  
 640  
 Dam Prod  
 2 WR 104  
 1 YR 105  
**ANGUS**  
 Powered by Neogen Genesee

- Recommended for larger framed heifers and cows.
- This bull has a good hip, great style and a long top.
- He has size and power.

**LOT 96** **Marcys Southern Charm 2150**  
 Bull 2/25/22 reg: 20410232 tattoo: 2150

BUBS Southern Charm AA31 Silveiras Conversion 8064  
 Marcys Southern Charm 0103 Hickory Hill Erica 009  
 Marcys Pride 41 Leachman Right Time #  
 Marcys Pride 419

Marcys Scale Breaker N Plus Marcys Scale Crusher  
 Marcys Manor 9138 Marcys Treasure 227 #  
 Ox Bow Manor 451 S A V Final Answer 0035 #  
 Ox Bow Manor 327 #

CED	BW	WW	YW	Milk	Doc
+6	-0.7	+38	+63	+28	+14
CW	Marb	RE	SM	SB	SC
+15	+0.42	+0.51	+63	+92	+182

Calving Ease  
 Birth Wt  
 68  
 205 Wt  
 511  
 Dam Prod  
 2 WR 91  
 1 YR 100  
**ANGUS**  
 Powered by Neogen Genesee

- Recommended for larger framed heifers and cows.
- Dam records 2@96 BWR.
- A deep, easy fleshing young bull.



*We have been in the Angus Business for over 75 years following a breeding discipline of a specific course for the commercial man. Thick, long bodied powerful bulls that produce a great cow have always been in demand.*

# YEARLING BULLS



**LOT 97** **Marcys Renovation 2113**  
 Bull 2/8/22 reg: 20411726 tattoo: 2113

S A V Renown 3439 #	Rito 707 of Ideal 3407 7075	<table border="1"> <tr><td>Calving Ease</td></tr> <tr><td>Birth Wt</td></tr> <tr><td>205 Wt</td></tr> <tr><td>Dam Prod</td></tr> <tr><td>3 WR 105</td></tr> <tr><td>2 YR 103</td></tr> </table>	Calving Ease	Birth Wt	205 Wt	Dam Prod	3 WR 105	2 YR 103																		
Calving Ease																										
Birth Wt																										
205 Wt																										
Dam Prod																										
3 WR 105																										
2 YR 103																										
<b>S A V Renovation 6822</b>	S A V Blackcap May 4136																									
S A V Madame Pride 0151	S A V 004 Density 4336 # S A V Madame Pride 0075																									
Connealy Spur #	Connealy Stimulus 8419 #	<table border="1"> <tr><td>CED</td><td>BW</td><td>WW</td><td>YW</td><td>Milk</td><td>Doc</td></tr> <tr><td><b>+6</b></td><td><b>+1.6</b></td><td><b>+74</b></td><td><b>+132</b></td><td><b>+23</b></td><td><b>+29</b></td></tr> <tr><td>CW</td><td>Marb</td><td>RE</td><td>\$M</td><td>\$B</td><td>\$C</td></tr> <tr><td><b>+45</b></td><td><b>+0.33</b></td><td><b>+0.42</b></td><td><b>+98</b></td><td><b>+110</b></td><td><b>+241</b></td></tr> </table>	CED	BW	WW	YW	Milk	Doc	<b>+6</b>	<b>+1.6</b>	<b>+74</b>	<b>+132</b>	<b>+23</b>	<b>+29</b>	CW	Marb	RE	\$M	\$B	\$C	<b>+45</b>	<b>+0.33</b>	<b>+0.42</b>	<b>+98</b>	<b>+110</b>	<b>+241</b>
CED	BW		WW	YW	Milk	Doc																				
<b>+6</b>	<b>+1.6</b>		<b>+74</b>	<b>+132</b>	<b>+23</b>	<b>+29</b>																				
CW	Marb	RE	\$M	\$B	\$C																					
<b>+45</b>	<b>+0.33</b>	<b>+0.42</b>	<b>+98</b>	<b>+110</b>	<b>+241</b>																					
<b>Marcys Pride 8143</b>	Jazza of Conanga 8594 #																									
Marcys 15 Pride 139-5	Marcys 13 Scale Crusher 68-3 Marcys 13 Pride 147-3																									

ANGUSGS  
Powered by Neogen Genesock

- Super type and correctness with a big hip.
- Standout bull that will be easily found sale day out of a very productive cow.

**LOT 99** **Marcys Renovation 2123**  
 Bull 2/11/22 reg: 20411729 tattoo: 2123

S A V Renown 3439 #	Rito 707 of Ideal 3407 7075	<table border="1"> <tr><td>Calving Ease</td></tr> <tr><td>Birth Wt</td></tr> <tr><td>205 Wt</td></tr> <tr><td>Dam Prod</td></tr> <tr><td>3 WR 105</td></tr> <tr><td>2 YR 102</td></tr> </table>	Calving Ease	Birth Wt	205 Wt	Dam Prod	3 WR 105	2 YR 102																		
Calving Ease																										
Birth Wt																										
205 Wt																										
Dam Prod																										
3 WR 105																										
2 YR 102																										
<b>S A V Renovation 6822</b>	S A V Blackcap May 4136																									
S A V Madame Pride 0151	S A V 004 Density 4336 # S A V Madame Pride 0075																									
JMB Traction 292 #	Sitz Top Game 561X #	<table border="1"> <tr><td>CED</td><td>BW</td><td>WW</td><td>YW</td><td>Milk</td><td>Doc</td></tr> <tr><td><b>-1</b></td><td><b>+5</b></td><td><b>+78</b></td><td><b>+139</b></td><td><b>+23</b></td><td><b>+19</b></td></tr> <tr><td>CW</td><td>Marb</td><td>RE</td><td>\$M</td><td>\$B</td><td>\$C</td></tr> <tr><td><b>+56</b></td><td><b>+0.15</b></td><td><b>+0.72</b></td><td><b>+62</b></td><td><b>+124</b></td><td><b>+223</b></td></tr> </table>	CED	BW	WW	YW	Milk	Doc	<b>-1</b>	<b>+5</b>	<b>+78</b>	<b>+139</b>	<b>+23</b>	<b>+19</b>	CW	Marb	RE	\$M	\$B	\$C	<b>+56</b>	<b>+0.15</b>	<b>+0.72</b>	<b>+62</b>	<b>+124</b>	<b>+223</b>
CED	BW		WW	YW	Milk	Doc																				
<b>-1</b>	<b>+5</b>		<b>+78</b>	<b>+139</b>	<b>+23</b>	<b>+19</b>																				
CW	Marb	RE	\$M	\$B	\$C																					
<b>+56</b>	<b>+0.15</b>	<b>+0.72</b>	<b>+62</b>	<b>+124</b>	<b>+223</b>																					
<b>Marcys Treasure 7104</b>	JMB Emulota 013																									
Marcys Treasure 015	O C C Emblazon 854E # Baldrige Treasure M0510																									

ANGUSGS  
Powered by Neogen Genesock

- A deep, high capacity, wide based bull.
- This bull is soggy with a lot of muscle.

**LOT 98** **Marcys Renovation 2122**  
 Bull 2/11/22 reg: 20411725 tattoo: 2122

S A V Renown 3439 #	Rito 707 of Ideal 3407 7075	<table border="1"> <tr><td>Calving Ease</td></tr> <tr><td>Birth Wt</td></tr> <tr><td>205 Wt</td></tr> <tr><td>Dam Prod</td></tr> <tr><td>2 WR 97</td></tr> <tr><td>1 YR 86</td></tr> </table>	Calving Ease	Birth Wt	205 Wt	Dam Prod	2 WR 97	1 YR 86																		
Calving Ease																										
Birth Wt																										
205 Wt																										
Dam Prod																										
2 WR 97																										
1 YR 86																										
<b>S A V Renovation 6822</b>	S A V Blackcap May 4136																									
S A V Madame Pride 0151	S A V 004 Density 4336 # S A V Madame Pride 0075																									
Connealy Spur #	Connealy Stimulus 8419 #	<table border="1"> <tr><td>CED</td><td>BW</td><td>WW</td><td>YW</td><td>Milk</td><td>Doc</td></tr> <tr><td><b>+2</b></td><td><b>+2.5</b></td><td><b>+66</b></td><td><b>+115</b></td><td><b>+26</b></td><td><b>+3</b></td></tr> <tr><td>CW</td><td>Marb</td><td>RE</td><td>\$M</td><td>\$B</td><td>\$C</td></tr> <tr><td><b>+43</b></td><td><b>+0.57</b></td><td><b>+0.1</b></td><td><b>+65</b></td><td><b>+107</b></td><td><b>+204</b></td></tr> </table>	CED	BW	WW	YW	Milk	Doc	<b>+2</b>	<b>+2.5</b>	<b>+66</b>	<b>+115</b>	<b>+26</b>	<b>+3</b>	CW	Marb	RE	\$M	\$B	\$C	<b>+43</b>	<b>+0.57</b>	<b>+0.1</b>	<b>+65</b>	<b>+107</b>	<b>+204</b>
CED	BW		WW	YW	Milk	Doc																				
<b>+2</b>	<b>+2.5</b>		<b>+66</b>	<b>+115</b>	<b>+26</b>	<b>+3</b>																				
CW	Marb	RE	\$M	\$B	\$C																					
<b>+43</b>	<b>+0.57</b>	<b>+0.1</b>	<b>+65</b>	<b>+107</b>	<b>+204</b>																					
<b>Marcys Erica 970</b>	Jazza of Conanga 8594 #																									
Marcys Erica 335	GDAR Game Day 449 # Marcys Erica 390																									

ANGUSGS  
Powered by Neogen Genesock

- This is a powerful, thick-made bull that's stylish, long, and smooth with a lot of muscle and base width.

**LOT 100** **Marcys Steamboat 2143**  
 Bull 2/20/22 reg: 20410227 tattoo: 2143

T K Steamboat D307	S A V Renown 3439 #	<table border="1"> <tr><td>Calving Ease</td></tr> <tr><td>Birth Wt</td></tr> <tr><td>205 Wt</td></tr> <tr><td>Dam Prod</td></tr> <tr><td>4 WR 110</td></tr> <tr><td>2 YR 104</td></tr> </table>	Calving Ease	Birth Wt	205 Wt	Dam Prod	4 WR 110	2 YR 104																		
Calving Ease																										
Birth Wt																										
205 Wt																										
Dam Prod																										
4 WR 110																										
2 YR 104																										
<b>Simonson Steamboat 4059</b>	T K Tesa W592																									
Msar Lady Eston 326 #	A A R High Five 8563 # Msar Lady Eston 126 #																									
Lisco No Question 802	S A V Final Answer 0035 #	<table border="1"> <tr><td>CED</td><td>BW</td><td>WW</td><td>YW</td><td>Milk</td><td>Doc</td></tr> <tr><td><b>+8</b></td><td><b>-0.4</b></td><td><b>+65</b></td><td><b>+118</b></td><td><b>+30</b></td><td><b>+17</b></td></tr> <tr><td>CW</td><td>Marb</td><td>RE</td><td>\$M</td><td>\$B</td><td>\$C</td></tr> <tr><td><b>+51</b></td><td><b>+0.57</b></td><td><b>+0.42</b></td><td><b>+52</b></td><td><b>+136</b></td><td><b>+228</b></td></tr> </table>	CED	BW	WW	YW	Milk	Doc	<b>+8</b>	<b>-0.4</b>	<b>+65</b>	<b>+118</b>	<b>+30</b>	<b>+17</b>	CW	Marb	RE	\$M	\$B	\$C	<b>+51</b>	<b>+0.57</b>	<b>+0.42</b>	<b>+52</b>	<b>+136</b>	<b>+228</b>
CED	BW		WW	YW	Milk	Doc																				
<b>+8</b>	<b>-0.4</b>		<b>+65</b>	<b>+118</b>	<b>+30</b>	<b>+17</b>																				
CW	Marb	RE	\$M	\$B	\$C																					
<b>+51</b>	<b>+0.57</b>	<b>+0.42</b>	<b>+52</b>	<b>+136</b>	<b>+228</b>																					
<b>Marcys Pride 623</b>	LA Lass 419 #																									
Marcys Pride 417	Connealy Packer 547 # Marcys 04 Pride 171-4																									

ANGUSGS  
Powered by Neogen Genesock

- Recommended for larger framed heifers and cows.
- A bigger framed bull that is long, really clean and going to have some stout to him.
- Dam records 4@98 BWR.



# YEARLING BULLS

**101** **Marcys Steamboat 2156**  
 Bull 2/28/22 reg: 20410235 tattoo: 2156

T K Steamboat D307  
**Simonson Steamboat 4059**  
 Msar Lady Eston 326 #

Lisco No Question 802  
**Marcys Treasure 882**  
 Marcys Treasure 691

S A V Renown 3439 #  
 T K Tesa W592  
 A A R High Five 8563 #  
 Msar Lady Eston 126 #

S A V Final Answer 0035 #  
 LA Lass 419 #  
 Marcys Freightliner 879  
 Marcys Treasure 3125 #

CED	BW	WW	YW	Milk	Doc
+11	+0.2	+64	+107	+26	+14
CW	Marb	RE	\$M	\$B	\$C
+42	+0.31	+0.2	+51	+102	+183

Calving Ease  
 ★★ ★  
 Birth Wt  
**79**  
 205 Wt  
**635**  
 Dam Prod  
**3 WR 92**  
**1 YR 105**

**ANGUS**  
 Powered by Nogen Genetics

- Recommended for heifers and cows.
- Dam records 3 @87 BWR.
- Great depth, very trim, and clean.
- This is a good bull that is clean sheathed.

**104** **Marcys Steamboat 2146**  
 Bull 2/23/22 reg: 20410229 tattoo: 2146

T K Steamboat D307  
**Simonson Steamboat 4059**  
 Msar Lady Eston 326 #

Marcys Scale Breaker N Plus  
**Marcys Pride 994**  
 Marcys Forever Lady 416

S A V Renown 3439 #  
 T K Tesa W592  
 A A R High Five 8563 #  
 Msar Lady Eston 126 #

Marcys Scale Crusher  
 Marcys Treasure 227 #  
 Leachman Right Time #  
 Marcys Forever Lady 935

CED	BW	WW	YW	Milk	Doc
+2	+3.7	+88	+151	+30	+10
CW	Marb	RE	\$M	\$B	\$C
+84	+0.42	+0.42	+51	+155	+252

Calving Ease  
 Birth Wt  
**94**  
 205 Wt  
**655**  
 Dam Prod  
**2 WR 105**  
**1 YR 109**

**ANGUS**  
 Powered by Nogen Genetics

- A big powerful younger bull that is very complete.
- Long bodied with a big top out of a high performing cow.

**102** **Marcys Steamboat 2167**  
 Bull 3/12/22 reg: 20410240 tattoo: 2167

T K Steamboat D307  
**Simonson Steamboat 4059**  
 Msar Lady Eston 326 #

Connealy Spur #  
**Marcys Erica 942**  
 Marcys Erica 690

S A V Renown 3439 #  
 T K Tesa W592  
 A A R High Five 8563 #  
 Msar Lady Eston 126 #

Connealy Stimulus 8419 #  
 Jazza of Conanga 8594 #  
 Marcys Scale Crusher  
 Marcys Erica 392

CED	BW	WW	YW	Milk	Doc
+3	+3.2	+71	+125	+28	+13
CW	Marb	RE	\$M	\$B	\$C
+62	+0.28	+0.73	+67	+140	+249

Calving Ease  
 Birth Wt  
**92**  
 205 Wt  
**656**  
 Dam Prod  
**2 WR 95**  
**1 YR 93**

**ANGUS**  
 Powered by Nogen Genetics

- Deep bodied with a strong stifle this bull has lots of muscle.

**105** **Marcys Steamboat 2164**  
 Bull 3/10/22 reg: 20410238 tattoo: 2164

T K Steamboat D307  
**Simonson Steamboat 4059**  
 Msar Lady Eston 326 #

Marcys Scale Breaker N Plus  
**Marcys Erica 8117**  
 Marcys Erica 54

S A V Renown 3439 #  
 T K Tesa W592  
 A A R High Five 8563 #  
 Msar Lady Eston 126 #

Marcys Scale Crusher  
 Marcys Treasure 227 #  
 Connealy Packer 547 #  
 Marcys Erica 3148

CED	BW	WW	YW	Milk	Doc
+8	+1.5	+70	+122	+32	+11
CW	Marb	RE	\$M	\$B	\$C
+67	+0.31	+0.55	+65	+145	+253

Calving Ease  
 Birth Wt  
**84**  
 205 Wt  
**629**  
 Dam Prod  
**3 WR 100**  
**2 YR 109**

**ANGUS**  
 Powered by Nogen Genetics

- This is a complete bull that moves really well.
- Very long bodied.



**103** **Marcys Steamboat 2149**  
 Bull 2/24/22 reg: 20410231 tattoo: 2149

T K Steamboat D307  
**Simonson Steamboat 4059**  
 Msar Lady Eston 326 #

HA Prime Cut 4493  
**Marcys Ethelda 923**  
 Marcys Ethelda 7132

S A V Renown 3439 #  
 T K Tesa W592  
 A A R High Five 8563 #  
 Msar Lady Eston 126 #

Vermilion Sirlain  
 HA Miss Blackcap 9127  
 Marcys No Question 463  
 Marcys Ethelda 619

CED	BW	WW	YW	Milk	Doc
+10	+0.9	+87	+162	+44	+22
CW	Marb	RE	\$M	\$B	\$C
+84	+0.54	+0.77	+39	+174	+265

Calving Ease  
 Birth Wt  
**83**  
 205 Wt  
**718**  
 Dam Prod  
**2 WR 100**  
**1 YR 100**

**ANGUS**  
 Powered by Nogen Genetics

- A moderate framed bull with a long, wide top.
- A very well made, high performance, younger bull.

**Simonson Steamboat 4059**



**S-A-V-Renown-3439**



The foundation sire behind SAV Renovation and Simonson Steamboat

# YEARLING BULLS

## Connealy-Spur



**LOT 106**

### Marcys Spur 295

Bull 2/4/22 reg: 20411739 tattoo: 295

Connealy Stimulus 8419 #  
Connealy Spur #  
Jazza of Conanga 8594 #

H A Power Alliance 1025 #  
Black Creeea of Conanga 5332  
TC Grid Topper 355 #  
Jemma of Conanga 5614

Marcys Game Time  
Marcys Ethelda E 622 #  
Marcys Ethelda E 4166

GDAR Game Day 449 #  
Marcys Erica 390  
Marcys Oscar 245  
Marcys Ethelda E 152

CED	BW	WW	YW	Milk	Doc
+7	+3.1	+69	+124	+25	+21
CW	Marb	RE	SM	SB	SC
+45	+0.08	+0.31	+61	+97	+187

Calving Ease
★
Birth Wt
94
205 Wt
683
Dam Prod
5 WR 103
3 YR 99



- This bull is solid with a wide top.
- Long, typey bull that has a lot to him.

**LOT 107**

### Marcys Spur 2102

Bull 2/6/22 reg: 20411638 tattoo: 2102

Connealy Stimulus 8419 #  
Connealy Spur #  
Jazza of Conanga 8594 #

H A Power Alliance 1025 #  
Black Creeea of Conanga 5332  
TC Grid Topper 355 #  
Jemma of Conanga 5614

HA Cowboy Up 5405 #  
Marcys Erica 8151  
Marcys Erica 051

HA Outside 3008  
HA Blackcap Lady 1602 #  
Redland Emblazon 2021  
Marcys Erica 191

CED	BW	WW	YW	Milk	Doc
+12	+0.9	+59	+104	+30	+21
CW	Marb	RE	SM	SB	SC
+37	+0.34	+0.27	+68	+103	+202

Calving Ease
★
Birth Wt
84
205 Wt
609
Dam Prod
3 WR 90
1 YR 85



- Recommended for larger framed heifers and cows.
- A smooth, moderate framed bull.
- Very complete with a big loin and scrotal.

**LOT 108**

### Marcys Spur 2126

Bull 2/12/22 reg: 20411736 tattoo: 2126

Connealy Stimulus 8419 #  
Connealy Spur #  
Jazza of Conanga 8594 #

H A Power Alliance 1025 #  
Black Creeea of Conanga 5332  
TC Grid Topper 355 #  
Jemma of Conanga 5614

S A V Resource 1441 #  
Marcys Ethelda E 8140  
Marcys Ethelda E 593

Rito 707 of Ideal 3407 7075  
S A V Blackcap May 4136  
Redland Emblazon 2021  
Marcys Ethelda E 032

CED	BW	WW	YW	Milk	Doc
-1	+5.2	+70	+119	+26	+14
CW	Marb	RE	SM	SB	SC
+43	+0.63	+0.48	+61	+114	+209

Calving Ease
★
Birth Wt
108
205 Wt
680
Dam Prod
3 WR 96
2 YR 97



- A correct bull with extra base and capacity.
- A long, good footed, smooth made bull.

## HERD HEALTH PROTOCOL

### BIRTH

Calves are tagged, weighed & given Alpha 7 (7-way Blackleg) & Multi-Min

### BRANDING

Calves are given Vista once. (IBR/BVD/BRSV/)

### PRECONDITIONING

Calves are given Vista Once SQ,( IBR/BVD/BRSV) Foot rot vaccine for bull calves, Ear notched for PI BVD testing

### WEANING

Vista 5 SQ (IMR/BVD/BRSV, 7-way Blackleg),  
Booster Foot rot booster for bulls & Panacur wormer

Weaning weights are recorded. Bulls are fence-line weaned & fed in a pasture on a program which allows the bulls to express their genetic potential but at the same time keeping them in range condition and not melting. This program grows the bulls at a slow and consistent pace that develops an athletic and muscular bull. In short, they are developed like athletes, not fat cattle.

### DECEMBER & JANUARY

Yearling weights are taken. Bulls are lot tagged, fertility tested and scrotal measurements on bulls.

Bulls are freeze branded for buyer convenience & poured with cleanup.

### BRED FEMALES

Follow the same vaccination program and have been vaccinated for Scour Guard, Plus pre-breeding vaccinations



# YEARLING BULLS



A powerful flush of massive, easy doing bulls from the exceptional Pathfinder dam Marcys Erica 578. She was the \$22,000 2nd high selling cow in our 2021 Female Sale to M Diamond Angus and J-M Angus. This exceptional Pathfinder dam balances a progeny birth ratio of 98 with progeny weaning of 109 on five natural calves and a progeny yearling ratio of 108 on four head with progeny IMF and ribeye ratios of 105 & 113 respectively on 3 head. Her natural son was selected to use as a junior herd sire and is a feature of this sale as lot 13.

Marcys-Erica-578



**LOT 109** **Marcys Atlantis 24**  
 Bull 1/26/22 reg: +20417996 tattoo: 24  
 Sire Square B Atlantis 8060 Dam Marcys Erica 578#  
 S A V Rainfall 6846 Coleman Charlo 0256 #  
 Square B Atlantis 8060 S A V Blackcap May 4136  
 Elbanna of Conanga 1209 Connealy Consensus #  
 Marcys Scale Crusher Sitz Upward 307R #  
**Marcys Erica 578 #** Marcys Erica 393 #  
 Marcys Erica 6124 O C C Emblazon 854E #  
 G Marcys Erica 334

CED	BW	WW	YW	Milk	Doc	Calving Ease
-4	+3.1	+71	+123	+24	+24	Birth Wt
						ET
						205 Wt
						ET
						Dam Prod
						5 WR 109
						5 YR 108

ANGUSGS  
Powered by Neogen Genesick

**LOT 113** **Marcys Atlantis 233**  
 Bull 1/29/22 reg: +20418007 tattoo: 233  
 Sire Square B Atlantis 8060 Dam Marcys Erica 578#

CED	BW	WW	YW	Milk	Doc	Calving Ease
+9	+0.6	+53	+97	+23	+17	Birth Wt
						ET
						205 Wt
						ET

ANGUSGS  
Powered by Neogen Genesick

**LOT 110** **Marcys Atlantis 26**  
 Bull 1/25/22 reg: +20417999 tattoo: 26  
 Sire Square B Atlantis 8060 Dam Marcys Erica 578#

CED	BW	WW	YW	Milk	Doc	Calving Ease
+5	+2.2	+74	+126	+30	+18	Birth Wt
						ET
						205 Wt
						ET

ANGUSGS  
Powered by Neogen Genesick

**LOT 114** **Marcys Atlantis 235**  
 Bull 1/23/22 reg: +20418009 tattoo: 235  
 Sire Square B Atlantis 8060 Dam Marcys Erica 578#

CED	BW	WW	YW	Milk	Doc	Calving Ease
-3	+3.6	+74	+127	+21	+22	Birth Wt
						ET
						205 Wt
						ET

ANGUSGS  
Powered by Neogen Genesick

**LOT 111** **Marcys Atlantis 224**  
 Bull 1/27/22 reg: +20418001 tattoo: 224  
 Sire Square B Atlantis 8060 Dam Marcys Erica 578#

CED	BW	WW	YW	Milk	Doc	Calving Ease
+0	+3.4	+69	+111	+22	+18	Birth Wt
						ET
						205 Wt
						ET

ANGUSGS  
Powered by Neogen Genesick

**LOT 115** **Marcys Atlantis 246**  
 Bull 1/24/22 reg: +20418010 tattoo: 246  
 Sire Square B Atlantis 8060 Dam Marcys Erica 578#

CED	BW	WW	YW	Milk	Doc	Calving Ease
+5	+2.1	+76	+127	+22	+24	Birth Wt
						ET
						205 Wt
						ET

ANGUSGS  
Powered by Neogen Genesick

**LOT 112** **Marcys Atlantis 226**  
 Bull 1/22/22 reg: +20418004 tattoo: 226  
 Sire Square B Atlantis 8060 Dam Marcys Erica 578#

CED	BW	WW	YW	Milk	Doc	Calving Ease
+5	+1.1	+57	+95	+26	+22	Birth Wt
						ET
						205 Wt
						ET

ANGUSGS  
Powered by Neogen Genesick



# MARCY ERICA BRED HEIFERS



**Marcys-Erica-393**



*Pathfinder Grandam of Lot 116*

**LOT 116** Cow 02/14/21 reg: +20060653 tattoo: 116

Silveiras Conversion 8064  
BUBS Southern Charm AA31  
Hickory Hill Erica 009

BT Crossover 758N #  
EXG Saras Dream S609 R3  
Connealy Stimulus 8419 #  
Hickory Hill Erica TA32

Sitz Upward 307R #  
Marcys Erica 337  
Marcys Erica 393 #

Connealy Onward #  
Sitz Henrietta Pride 81M  
Leachman Right Time #  
G Marcy Erica 118



Dam Prod  
**6 WR 108**  
**3 YR 103**

CED	BW	WW	YW	Milk	Doc
+4	+1.4	+57	+94	+31	-1
CW	Marb	RE	SM	SB	SC
+42	+0.83	+0.90	+70	+149	+263



- The dam of this heifer is the \$65,000 record-selling cow in the more than seventy-five year history of the Marcy program as the \$65,000 Lot 1 cow of the 2021 Marcy Female Sale to Voss Angus, and she records a progeny weaning ratio of 108 on six natural calves with her progeny including the top-selling bull of the 2022 Marcy Production Sale and the second top-selling bull of the 2017 Marcy Production Sale.

- The dam also has the distinction of being a full sister to Marcys Scale Crusher, stemming from the Pathfinder Dam Marcys Erica 393.

Bred to calve approximately March 2, 2023 to MARCYS SMOOTH BORE 030 or SQUARE B OUTRIGGER.

**Marcys-Erica-337**



*Dam of Lot 116*

**LOT 117** Cow 04/08/21 reg: 20246934 tattoo: 192

Connealy Spur #  
Marcys Spur 976  
Marcys Erica 578 #

**Marcys Erica 192**

Cow 04/08/21 reg: 20246934 tattoo: 192

Connealy Stimulus 8419 #  
Jazza of Conanga 8594 #  
Marcys Scale Crusher  
Marcys Erica 6124

Marcys Game Time  
Marcys Erica 794  
Marcys Erica 529

GDAR Game Day 449 #  
Marcys Erica 390  
Cole Creek Cedar Ridge 1V #  
Marcys Erica 337



Dam Prod  
**2 WR 105**  
**2 YR 99**

CED	BW	WW	YW	Milk	Doc
+5	+3.5	+75	+127	+29	+17
CW	Marb	RE	SM	SB	SC
+53	+0.51	+0.74	+87	+139	+267

- The granddam of this linebred Erica produced one of the best two-year-old bulls in the sale, the junior herd sire Lot 3 Marcys Coalition 1154

- The dam has a progeny weaning ratio of 105 on two calves and the grandam was the Lot 2 cow of the 2021 Marcy Female Sale where the third dam was the \$65,000 Lot 1 cow.

Bred to calve approximately March 14, 2023 to MARCYS SMOOTH BORE 030 or SQUARE B OUTRIGGER.

**Marcys-Scale-Crusher**



*Full Brother to the Dam of Lot 116*

# MARCY ERICA BRED HEIFERS



Marcys-Erica 390



Dam of Lot 120 and Grandam of Lots 119 and 121




**118** <sup>LOT</sup> Cow 01/24/21 reg: 20246887 tattoo: 139

S A V Final Answer 0035 #  
**Lisco No Question 802**  
 LA Lass 419 #

Marcys Scale Breaker N Plus  
**Marcys Erica 9141**  
 Marcys Erica 563

Sitz Traveler 8180 #  
 S A V Emulous 8145  
 Baldrige Nebraska 901 #  
 L A Lass 428 B

Marcys Scale Crusher  
 Marcys Treasure 227 #  
 G D A R Oscar 734 #  
 Marcys Erica 393 #

							
CED	BW	WW	YW	Milk	Doc	<b>1 WR 98</b>	
<b>+11</b>	<b>-0.1</b>	<b>+54</b>	<b>+92</b>	<b>+21</b>	<b>+26</b>	<b>1 YR 98</b>	
CW	Marb	RE	\$M	\$B	\$C		
<b>+41</b>	<b>+.56</b>	<b>+.36</b>	<b>+62</b>	<b>+130</b>	<b>+231</b>	Powered by Neogen GenScan	

- A descendant of the Pathfinder Dam Marcys Erica 393 who produced Marcys Scale Crusher and Marcys Erica 337.
- This female is by the proven calving-ease sire Lisco No Question 802. *Bred to calve approximately March 28, 2023 to MARCYS SMOOTH BORE 030 or SQUARE B OUTRIGGER.*


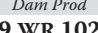

**120** <sup>LOT</sup> Cow 03/10/21 reg: +20310823 tattoo: 124

Feltons Meat Packer 62 #  
**Connealy Packer 547 #**  
 Bestrelle of Conanga 539

Leachman Right Time #  
**Marcys Erica 390**  
 G Marcys Erica 118

Finks 5522-6148 #  
 Graham N Mistress 8  
 Dalebanks Extender 6012 #  
 Besta of Conanga 6538 #

N Bar Emulation EXT #  
 Leachman Erica 0025  
 G D A R Oscar 711 #  
 Marcys Erica 37

							
CED	BW	WW	YW	Milk	Doc	<b>9 WR 102</b>	
<b>+8</b>	<b>+1.0</b>	<b>+42</b>	<b>+73</b>	<b>+34</b>	<b>+6</b>	<b>6 YR 103</b>	
CW	Marb	RE	\$M	\$B	\$C		
<b>+33</b>	<b>+.24</b>	<b>+.24</b>	<b>+61</b>	<b>+101</b>	<b>+192</b>	Powered by Neogen GenScan	

- A maternal sister to the proven sire Marcys Game Time from a donor dam who records a progeny weaning ratio of 102 on nine natural calves and a progeny yearling ratio of 103 on six head with 32 daughters in production and 43 head who post a collective progeny IMF ratio of 104.
- The dam is a full sister to Marcys Erica 393. *AI bred to SITZ RESILIENT May 3 and turned out with MARCYS SMOOTH BORE 030 and SQUARE B OUTRIGGER May 5*




**119** <sup>LOT</sup> Cow 02/26/21 reg: 20246915 tattoo: 173

Connealy Spur #  
**Marcys Spur 8107**  
 Marcys Erica 221 #

HA Cowboy Up 5405 #  
**Marcys Erica 816**  
 Marcys Erica 390

Connealy Stimulus 8419 #  
 Jazza of Conanga 8594 #  
 Sitz Upward 307R #  
 Marcys Erica 867 #

HA Outside 3008  
 HA Blackcap Lady 1602 #  
 Leachman Right Time #  
 G Marcys Erica 118

							
CED	BW	WW	YW	Milk	Doc	<b>3 WR 96</b>	
<b>+1</b>	<b>+2.4</b>	<b>+54</b>	<b>+97</b>	<b>+24</b>	<b>+13</b>	<b>2 YR 101</b>	
CW	Marb	RE	\$M	\$B	\$C		
<b>+29</b>	<b>+.17</b>	<b>+.67</b>	<b>+79</b>	<b>+93</b>	<b>+200</b>	Powered by Neogen GenScan	

- This double-bred Erica was produced from a dam who was a product of the embryo program.
- The grandam produced Marcys Game Time. *Bred to calve approximately February 11, 2023 to MARCYS SMOOTH BORE 030 or SQUARE B OUTRIGGER.*


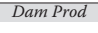
**121** <sup>LOT</sup> Cow 03/04/21 reg: 20246922 tattoo: 180

Connealy Spur #  
**Marcys Spur 8107**  
 Marcys Erica 221 #

Baldrige Waylon W34 #  
**Marcys Erica 832**  
 Marcys Erica 390

Connealy Stimulus 8419 #  
 Jazza of Conanga 8594 #  
 Sitz Upward 307R #  
 Marcys Erica 867 #

GAR-EGL Protege #  
 Baldrige Blackcap T163  
 Leachman Right Time #  
 G Marcys Erica 118

							
CED	BW	WW	YW	Milk	Doc		
<b>+4</b>	<b>+2.5</b>	<b>+63</b>	<b>+111</b>	<b>+21</b>	<b>+22</b>		
CW	Marb	RE	\$M	\$B	\$C		
<b>+45</b>	<b>+.54</b>	<b>+.58</b>	<b>+65</b>	<b>+133</b>	<b>+238</b>		

- This double-bred Erica is a granddaughter of both Marcys Erica 390 and Marcys Erica 221 who both served as valued Marcys donors. *Bred to calve approximately March 16, 2023 to MARCYS SMOOTH BORE 030 or SQUARE B OUTRIGGER.*

# MARCY ERICA BRED HEIFERS



Marcys-Erica-866



Grandam of Lots 122 and 123

## LOT 122 Marcys Erica 150

Cow 02/05/21 reg: 20246895 tattoo: 150  
 HF Syndicate 213Z  
 U-2 Coalition 206C  
 U2 Ereelite 109Z

HA Cowboy Up 5405 #  
**Marcys Erica 812**  
 Marcys Erica 866 #

Connealy Consensus 7229 #  
 HF Miss Blackcap 27R  
 Young Dale Xclusive 25X  
 U-2 Ereelite 1X



CED	BW	WW	YW	Milk	Doc
+8	+1.5	+77	+143	+30	+23
CW	Marb	RE	SM	SB	SC
+60	+1.10	+59	+65	+133	+238

Dam Prod	
2 WR	113
2 YR	116



- This high-indexing bred heifer earned impressive individual weaning and yearling ratios of 117 and 120 respectively sired by U-2 Coalition 206C from a dam with progeny weaning and yearling ratios of 113 and 116 respectively on two calves.
  - The grandam is the Pathfinder Dam Marcys Erica 866.
- Bred to calve approximately March 4, 2023 to MARCYS SMOOTH BORE 030 or SQUARE B OUTRIGGER.**

## LOT 123 Marcys Erica 164

Cow 02/19/21 reg: 20246908 tattoo: 164  
 Marcys Scale Crusher  
**Marcys Scale Crusher 8164**  
 Marcys Ethelda 439 #

Leachman Right Time #  
**Marcys Erica 61**  
 Marcys Erica 866 #

Sitz Upward 307R #  
 Marcys Erica 393 #  
 Lisco No Question 802  
 Marcys Ethelda 2105



CED	BW	WW	YW	Milk	Doc
+1	+2.6	+81	+148	+29	+21
CW	Marb	RE	SM	SB	SC
+67	+2.22	+68	+54	+142	+238

Dam Prod	
3 WR	103
2 YR	103



- A granddaughter of both Marcys Scale Crusher and Leachman Right Time with individual weaning and yearling ratios of 102 and 105 respectively from a dam with a progeny weaning ratio of 103 on three calves and sells in this sale.
  - Both grandams are Pathfinder Dams.
- Bred to calve approximately February 17, 2023 to MARCYS SMOOTH BORE 030 or SQUARE B OUTRIGGER.**

## LOT 124 Marcys Erica 143

Cow 02/02/21 reg: 20246919 tattoo: 143  
 Connealy Confidence Plus #  
**LT Converse 8011**  
 LT Nordica 6066 #

SSAF Balboa 230  
**Marcys Erica 5140**  
 Marcys Erica 113

Connealy Confidence 0100 #  
 Elbanna of Conanga 1209  
 Koupal Advance 28 #  
 LT Nordica 3278 #  
 VAR Rocky 80029 #  
 SSAF 153H Queen Lass 620 #  
 Sitz Dash 10277 #  
 Marcys Erica 925



CED	BW	WW	YW	Milk	Doc
+14	-0.9	+56	+100	+32	+16
CW	Marb	RE	SM	SB	SC
+20	+0.90	+47	+73	+109	+214

Dam Prod	
5 WR	99
5 YR	101



- A bred heifer by the Genex sire LT Converse 8011 backed by the time-tested Erica family.
- Bred to calve approximately February 17, 2023 to MARCYS SMOOTH BORE 030 or SQUARE B OUTRIGGER.**

## LOT 125 Marcys Erica 177

Cow 03/03/21 reg: 20246918 tattoo: 177  
 BUBS Southern Charm AA31  
**Marcys Southern Charm 999**  
 Marcys Misty 4112 #

S Summit 956 #  
**Marcys Erica 742**  
 Marcys Erica 585

Silveiras Conversion 8064  
 Hickory Hill Erica 009  
 Marcys Dash 111  
 Marcys Misty 975  
 GDAR Game Day 449 #  
 S Pride Anna 709 #  
 Marcys Scale Crusher  
 Marcys Erica 98



CED	BW	WW	YW	Milk	Doc
+1	+4.2	+73	+124	+35	+16
CW	Marb	RE	SM	SB	SC
+59	+0.34	+34	+59	+131	+229

Dam Prod	
4 WR	104
3 YR	104



- This bred heifer records an individual weaning ratio of 105 and an individual yearling ratio of 109 from a dam with a progeny weaning ratio of 104 on four calves and a progeny yearling ratio of 104 on three head.
  - A maternal brother is a sale feature as Lot 77 in this sale.
- Bred to calve approximately February 13, 2023 to MARCYS SMOOTH BORE 030 or SQUARE B OUTRIGGER.**

# MARCY BRED HEIFERS

**LOT 126** **Marcys Pride 123**  
 Cow 03/18/21 reg: +20294990 tattoo: 123  
 O C C Emblazon 854E # D H D Traveler 6807 #  
 Redland Emblazon 2021 Dixie Erica of C H 1019  
 Redland Blackcap 1289 Paramount Ambush 2172 #  
 Redland Blackcap 516  
 Leachman Right Time # N Bar Emulation EXT #  
**Marcys 04 Pride 171-4** Leachman Erica 0025  
 Marcys 96 Pride 116-6 # G D A R Oscar 734 #  
 Marcys 91 Pride 2

CED	BW	WW	YW	Milk	Doc	Dam Prod
-4	+2.9	+53	+81	+22	+16	8 WR 103
						7 YR 102
CW	Marb	RE	\$M	\$B	\$C	ANGUSGS
+37	+0.2	+64	+48	+96	+173	Powered by Neogen GenesCo

- The donor dam of this bred heifer balances a progeny birth ratio of 96 with a progeny weaning ratio of 103 on eight natural calves to rank as one of the top income-producing cows in the history of the Marcy program, with 22 daughters in production and 44 head evaluated by ultrasound.
- The Pathfinder grandam is the top-selling cow of a past Marcy sale. **Bred to calve approximately February 11, 2023 to MARCYS SMOOTH BORE 030 or SQUARE B OUTRIGGER.**

**LOT 127** **Marcys Pride 131**  
 Cow 01/16/21 reg: 20333063 tattoo: 131  
 Tehama Upward Y238 Sitz Upward 307R #  
**Tehama Tahoe B767 #** Tehama Elite Blackbird T735  
 Tehama Mary Blackbird Y684 S A V Final Answer 0035 #  
 Tehama Mary Blackbird T073  
 Baldrige Conductor C794 Baldrige Waylon W34 #  
**Marcys Pride 9155** Baldrige Forever Lady T269  
 Marcys Pride 067 Redland Emblazon 2021  
 Marcys Pride 264 #

CED	BW	WW	YW	Milk	Doc	Dam Prod
+9	-0.1	+61	+108	+29	+24	
CW	Marb	RE	\$M	\$B	\$C	ANGUSGS
+43	+0.85	+64	+78	+138	+257	Powered by Neogen GenesCo

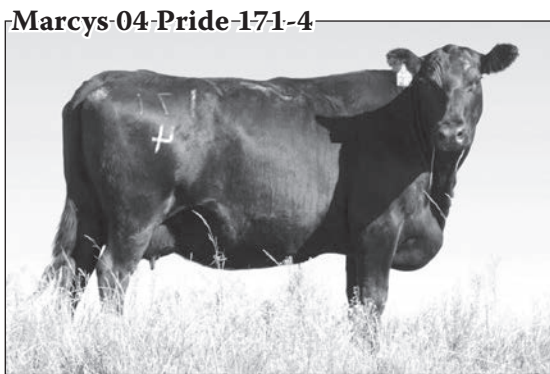
- A bred heifer by the Select Sires Pathfinder Sire Tehama Tahoe B767 tracing to a Pathfinder third dam. **Bred to calve approximately February 13, 2023 to MARCYS SMOOTH BORE 030 or SQUARE B OUTRIGGER.**



**Marcys-Pride-419**



Grandam of Lot 128



Dam of Lot 126

**LOT 128** **Marcys Pride 155**  
 Cow 02/07/21 reg: 20246899 tattoo: 155  
 Sitz Upward 307R # Connealy Onward #  
**Marcys Scale Crusher** Sitz Henrietta Pride 81M  
 Marcys Erica 393 # Leachman Right Time #  
 G Marcy Erica 118  
 Leachman Right Time # N Bar Emulation EXT #  
**Marcys Pride 431** Leachman Erica 0025  
 Marcys Pride 419 Redland Emblazon 2021  
 Marcys Pride 272

CED	BW	WW	YW	Milk	Doc	Dam Prod
+9	+1.4	+61	+107	+33	+22	5 WR 101
						4 YR 100
CW	Marb	RE	\$M	\$B	\$C	ANGUSGS
+59	+0.34	+57	+69	+140	+251	Powered by Neogen GenesCo

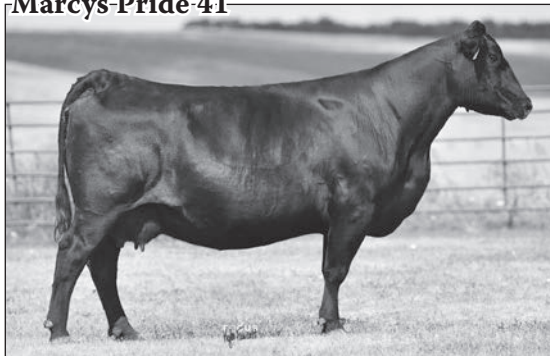
- The dam of this bred heifer is a full sister to the proven donor Marcys Pride 41 who in turn produced Marcys Crusher 022, the \$19,000 top-selling yearling bull of the 2021 Marcy Production Sale to Stauffer Ranches of Alberta, Canada. **Bred to calve approximately February 13, 2023 to MARCYS SMOOTH BORE 030 or SQUARE B OUTRIGGER.**

**LOT 129** **Marcys Miss Ideal 174**  
 Cow 02/28/21 reg: 20246916 tattoo: 174  
 Marcys Scale Crusher Sitz Upward 307R #  
**Marcys Scale Crusher 8164** Marcys Erica 393 #  
 Marcys Ethelda 439 # Lisco No Question 802  
 Marcys Ethelda 2105  
 JMB Traction 292 # Sitz Top Game 561X #  
**Marcys Miss Ideal 7127** JMB Emulota 013  
 Marcys 14 Miss Ideal 126-4 # Redland Emblazon 2021  
 Marcys Miss Ideal 178-1

CED	BW	WW	YW	Milk	Doc	Dam Prod
+7	+1.9	+65	+114	+38	+12	4 WR 102
						3 YR 102
CW	Marb	RE	\$M	\$B	\$C	ANGUSGS
+54	+0.07	+64	+60	+116	+210	Powered by Neogen GenesCo

- This granddaughter of Marcys Scale Crusher has an individual yearling ratio of 105 from a dam with a progeny weaning ratio of 102 on four calves, stemming from a Pathfinder grandam. **Bred to calve approximately March 4, 2023 to MARCYS SMOOTH BORE 030 or SQUARE B OUTRIGGER.**

**Marcys-Pride-41**

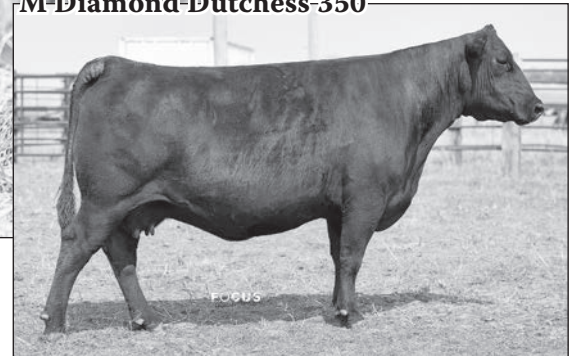


Full sister to the Dam of Lot 128

# MARCY BRED HEIFERS



M-Diamond-Dutchess-350



Pathfinder Grandam of Lot 130

## LOT 130 Marcys Dutchess 127

Cow 01/14/21 reg: 20246878 tattoo: 127  
 Connealy Confidence Plus #  
 LT Converse 8011  
 LT Nordica 6066 #  
 4M Ace 709  
 Marcys Dutchess 945  
 M Diamond Dutchess 350 #  
 Connealy Confidence 0100 #  
 Elbanna of Conanga 1209  
 Koupal Advance 28 #  
 LT Nordica 3278 #  
 Musgrave Aviator #  
 KGM Enchantress 4054  
 Leachman Right Time #  
 M Diamond Dutchess 184



Dam Prod  
**2 WR 101**  
**1 YR 99**

CED	BW	WW	YW	Milk	Doc
+11	-0.3	+61	+103	+32	+15
CW	Marb	RE	SM	SB	SC
+50	+7.5	+59	+84	+147	+275



- A bred heifer backed by the noted sires LT Converse 8011 and 4M Ace 709.
- The Pathfinder grandam sold to Windswept Farm of Wisconsin. Bred to calve approximately February 15, 2023 to MARCYS SMOOTH BORE 030 or SQUARE B OUTRIGGER.

## LOT 131 Marcys Misty 114

Cow 02/17/21 reg: +20060658 tattoo: 114  
 Connealy Stimulus 8419 #  
 Connealy Spur #  
 Jazza of Conanga 8594 #  
 Redland Emblazon 2021  
 Marcys Misty 975  
 Marcys Misty 632 #  
 H A Power Alliance 1025 #  
 Black Creeza of Conanga 5332  
 TC Grid Topper 355 #  
 Jemma of Conanga 5614  
 O C C Emblazon 854E #  
 Redland Blackcap 1289  
 S A V 8180 Traveler 004 #  
 Marcys Misty 320



Dam Prod  
**8 WR 104**  
**6 YR 103**

CED	BW	WW	YW	Milk	Doc
-2	+4.3	+61	+100	+36	+22
CW	Marb	RE	SM	SB	SC
+41	+1.8	+40	+91	+91	+209



- This bred heifer produced in the embryo program is by the Pathfinder Sire Connealy Spur from a donor dam with a progeny weaning ratio of 104 on eight natural calves, stemming from a Pathfinder grandam.
- Eight maternal sisters post a collective progeny weaning ratio of 104. Bred to calve approximately February 9, 2023 to MARCYS SMOOTH BORE 030 or SQUARE B OUTRIGGER.

## LOT 132 Marcys Ethelda 121

Cow 01/29/21 reg: 20285222 tattoo: 121  
 Sitz Upward 307R #  
 Marcys Scale Crusher  
 Marcys Erica 393 #  
 Connealy Onward #  
 Sitz Henrietta Pride 81M  
 Leachman Right Time #  
 G Marcy Erica 118  
 Leachman Right Time #  
 G Marcy Erica 118  
 Marcys Panhandle Tom  
 G Marcy's Ethelda E 966 #



Dam Prod  
**5 WR 99**  
**6 YR 102**

CED	BW	WW	YW	Milk	Doc
+7	+1.8	+69	+122	+34	+16
CW	Marb	RE	SM	SB	SC
+52	+5.1	+73	+70	+137	+248



- A bred heifer by the one-of-a-kind performance sire Marcys Scale Crusher.
- This female is backed by the productive and prolific Ethelda family tracing to a Pathfinder third dam. Bred to calve approximately March 24, 2023 to MARCYS SMOOTH BORE 030 or SQUARE B OUTRIGGER.

## LOT 133 Marcys Ethelda 154

Cow 02/07/21 reg: 20246898 tattoo: 154  
 Vermilion Sirloin  
 HA Prime Cut 4493  
 HA Miss Blackcap 9127  
 TC Franklin 619 #  
 Vermilion Lass 8482 #  
 HA Program 5652 #  
 H A Miss Blackcap 1250 #  
 O C C Emblazon 854E #  
 Redland Blackcap 1289  
 Marcys Panhandle Tom  
 Marcys 04 Ethelda E 152-4



Dam Prod  
**7 WR 101**  
**5 YR 100**

CED	BW	WW	YW	Milk	Doc
+5	+2.2	+74	+120	+28	+19
CW	Marb	RE	SM	SB	SC
+52	-.01	+79	+63	+113	+210



- This bred heifer from the Ethelda family is by the Genex sire HA Prime Cut 4493 from a dam who combines a progeny birth ratio of 97 with a progeny weaning ratio of 101 on seven calves, stemming from a Pathfinder grandam. Bred to calve approximately March 16, 2023 to MARCYS SMOOTH BORE 030 or SQUARE B OUTRIGGER.



# MARCY COWS

## LOT 134 Marcys Treasure 1220

Cow 03/10/21 reg: +20512388 tattoo: 1220  
 N Bar Emulation EXT # Emulation N Bar 5522 #  
 Leachman Right Time # N Bar Primrose 2424  
 Leachman Erica 0025 Tehama Bando 155 #  
 Leachman Erica 8058  
 Redland Emblazon 2021 O C C Emblazon 854E #  
 Redland Blackcap 1289  
 Marcys Treasure 227 # Sitz Alliance 6595 #  
 Marcys Treasure 947 Marcys Treasure 496



Dam Prod

CED	BW	WW	YW	Milk	Doc
+4	+1.9	+43	+73	+26	+20
CW	Marb	RE	\$M	\$B	\$C
+27	+1.8	+1.4	+35	+93	+156

- A Right Time out of the Pathfinder dam of Scale Breaker N Plus.
  - Should make an excellent female out of one of our best donor cows.
- Bred to calve approximately March 6 to MARCY'S SMOOTH BORE 030 or SQUARE B OUTRIGGER.*



## LOT 135 Marcys 19 Ethelda E 90-9

Cow 02/08/19 reg: +19469966 tattoo: 909  
 Sitz Upward 307R # Connealy Onward #  
 Marcys Scale Crusher Sitz Henrietta Pride 81M  
 Marcys Erica 393 # Leachman Right Time #  
 G Marcy Erica 118



Dam Prod

CED	BW	WW	YW	Milk	Doc
+5	+3.3	+71	+126	+19	+20
CW	Marb	RE	\$M	\$B	\$C
+61	+2.6	+7.3	+72	+145	+260

- A featured female produced in the embryo program by the rare, one-of-a-kind sire Marcys Scale Crusher from a prolific and high-income-producing Pathfinder Dam.
- This cow has a progeny birth ratio of 94 combined with a progeny weaning ratio of 101 on her first two calves and her dam records a progeny weaning ratio of 104 on eight natural calves combined with a progeny yearling ratio of 106 on six head.

*Bred to calve approximately April 3 to breeding GROUP A BULLS.*

## LOT 136 Marcys Erica 812

Cow 02/15/18 reg: +19167215 tattoo: 812  
 HA Outside 3008 KG Solution 0018 #  
 HA Cowboy Up 5405 # HA Ever Lady 1575 #  
 HA Blackcap Lady 1602 # Sitz Upward 307R #  
 HA Blackcap Lady 5515



Dam Prod

CED	BW	WW	YW	Milk	Doc
+6	+2.6	+75	+137	+21	+16
CW	Marb	RE	\$M	\$B	\$C
+45	+1.9	+4.8	+52	+125	+214

- This high-indexing cow has earned progeny weaning and yearling ratios of 113 and 116 respectively on her first two calves and has two daughters retained in the herd.
- The Pathfinder Dam records progeny weaning and yearling ratios of 108 and 106 respectively on five natural calves and a progeny ribeye ratio of 105 on 32 head.

*Bred to calve approximately March 25 to breeding GROUP B BULLS.*



## LOT 137 Marcys Erica 61

Cow 01/28/16 reg: +18626577 tattoo: 61  
 N Bar Emulation EXT # Emulation N Bar 5522 #  
 Leachman Right Time # N Bar Primrose 2424  
 Leachman Erica 0025 Tehama Bando 155 #  
 Leachman Erica 8058



Dam Prod

CED	BW	WW	YW	Milk	Doc
+4	+1.3	+56	+105	+23	+16
CW	Marb	RE	\$M	\$B	\$C
+35	+1.5	+3.6	+54	+114	+202

- This maternal sister to Lot 140 is from the Pathfinder Dam Marcys Erica 866.
- This cow records a progeny weaning ratio of 103 on three calves and a progeny yearling ratio of 103 on two head with two daughters retained in the herd.

*Bred to calve approximately April 9, 2023 to GROUP B BULLS.*

## LOT 138 Marcys Erica 054

Cow 02/04/20 reg: 19853562 tattoo: 054  
 KM Broken Bow 002 # Summitcrest Complete 1P55 #  
 Casino Bomber N33 Summitcrest Princess 0P12 #  
 Casino Annie K48 # DPL Upward L70  
 Casino Annie G64



Dam Prod

CED	BW	WW	YW	Milk	Doc
+4	+1.7	+91	+153	+24	+19
CW	Marb	RE	\$M	\$B	\$C
+80	+7.4	+8.5	+56	+176	+284

- A daughter of the high-selling Casino Bomber N33 from the family descending from the Pathfinder Dam Marcys Erica 866.
- A son sells in this sale.

*Bred to calve approximately March 20, 2023 to GROUP A BULLS.*



## LOT 139 **Marcys Erica 0145**

Cow 02/29/20 reg: 19853546 tattoo: 0145

Marcys Scale Crusher  
**Marcys Scale Crusher 8164**  
 Marcys Ethelda 439 #

Sitz Upward 307R #  
 Marcys Erica 393 #  
 Lisco No Question 802  
 Marcys Ethelda 2105



Baldrige Waylon W34 #  
**Marcys Erica 678**  
 Marcys Erica 3124

GAR-EGL Protege #  
 Baldrige Blackcap T163  
 Marcys Scale Crusher  
 Marcys Erica 68

CED	BW	WW	YW	Milk	Doc	Dam Prod
+10	+0.0	+70	+131	+23	+17	5 WR 100
+64	+0.88	+60	+52	+177	+282	3 YR 102

• A granddaughter of Marcys Scale Crusher stemming from a grandam who sold to Marshall McKean in the 2018 Marcy Female Sale.  
 Bred to calve approximately April 10, 2023 to GROUP B BULLS.



## LOT 140 **Marcys Erica 832**

Cow 02/10/18 reg: +19164931 tattoo: 832

GAR-EGL Protege #  
**Baldrige Waylon W34 #**  
 Baldrige Blackcap T163

Rito 112 of 2536 Rito 616 #  
 L B 6807 Isabel 339  
 Woodhill Foresight #  
 Baldrige Blackcap P326



Leachman Right Time #  
**Marcys Erica 390**  
 G Marcy Erica 118

N Bar Emulation EXT #  
 Leachman Erica 0025  
 G D A R Oscar 711 #  
 Marcys Erica 37

CED	BW	WW	YW	Milk	Doc	Dam Prod
+0	+3.0	+57	+97	+18	+21	9 WR 102
+40	+5.3	+47	+41	+128	+207	6 YR 103

• This maternal sister to Marcys Game Time is from the proven donor Marcys Erica 390 who is a full sister to the proven donor Marcys Erica 393.

Bred AI June 3 to BALDRIDGE FLAGSTONE; Pasture exposed to MARCY SMOOTH BORE 030 & MARCY COALITION 1154 from June 6 to July 30.

## LOT 142 **Marcys Treasure 921**

Cow 02/01/19 reg: 19525773 tattoo: 921

Vermilion Sirloin  
**HA Prime Cut 4493**  
 HA Miss Blackcap 9127

TC Franklin 619 #  
 Vermilion Lass 8482 #  
 HA Program 5652 #  
 H A Miss Blackcap 1250 #



Marcys Game Time  
**Marcys Treasure 7140**  
 Marcys Treasure 565

GDAR Game Day 449 #  
 Marcys Erica 390  
 Connealy Packer 547 #  
 Marcys Treasure 2116

CED	BW	WW	YW	Milk	Doc	Dam Prod
+13	-0.9	+56	+98	+26	+24	4 WR 101
+43	+4.8	+60	+74	+136	+250	3 YR 101

• A deep-ribbed and high-maternal daughter of the proven Genex sire HA Prime Cut 4493 from a dam by Marcys Game Time.  
 Bred to calve approximately March 28, 2023 to GROUP C BULLS.

## LOT 141 **Marcys Erica 636**

Cow 02/03/16 reg: 18626598 tattoo: 636

Feltons Meat Packer 62 #  
**Connealy Packer 547 #**  
 Bestrelle of Conanga 539

Finks 5522-6148 #  
 Graham N Mistress 8  
 Dalebanks Extender 6012 #  
 Besta of Conanga 6538 #



Redland Emblazon 2021  
**Marcys Erica 4120**  
 Marcys Erica 181 #

O C C Emblazon 854E #  
 Redland Blackcap 1289  
 G Marcys Widetrack  
 G Marcys Erica 440 #

CED	BW	WW	YW	Milk	Doc	Dam Prod
+7	+1.2	+46	+79	+27	+18	
+23	+0.30	+38	+62	+93	+183	

• A very sharp fronted, well-made female that has been very productive. Her dam is the dam of the Lot 75 bull in the sale.

Bred June 4 to MARCY PANHANDLE; Pasture exposed to MARCY SMOOTH BORE 030 & MARCY COALITION 1154 from June 6 to July 30.

## LOT 143 **Marcys Erica 942**

Cow 02/07/19 reg: 19522948 tattoo: 942

Connealy Stimulus 8419 #  
**Connealy Spur #**  
 Jazza of Conanga 8594 #

H A Power Alliance 1025 #  
 Black Creea of Conanga 5332  
 TC Grid Topper 355 #  
 Jemma of Conanga 5614



Marcys Scale Crusher  
**Marcys Erica 690**  
 Marcys Erica 392

Sitz Upward 307R #  
 Marcys Erica 393 #  
 Redland Emblazon 2021  
 Marcys Erica 960

CED	BW	WW	YW	Milk	Doc	Dam Prod
+5	+3.4	+70	+117	+28	+21	2 WR 94
+58	+0.27	+68	+73	+132	+244	1 YR 94

• A long deep easy doing cow.  
 • This Erica female has a good Steamboat son selling as lot 102 in this sale.

Bred to calve approximately April 3, 2023 to GROUP C BULLS.

**Marcys-Erica-4120**



Dam of Lot 75 and 141

## LOT 144 **Marcys Bow Manor 958**

Cow 02/08/19 reg: 19508128 tattoo: 958

Sitz Upward 307R #  
**Marcys Scale Crusher**  
 Marcys Erica 393 #

Connealy Onward #  
 Sitz Henrietta Pride 81M  
 Leachman Right Time #  
 G Marcy Erica 118



Ox Bow Final Answer 1304  
**Ox Bow Manor 318**  
 Ox Bow Manor 153

S A V Final Answer 0035 #  
 Ox Bow Forever Lady 966  
 MC Cumber 4X13 Extra 7159  
 Ox Bow Manor 745

CED	BW	WW	YW	Milk	Doc	Dam Prod
+10	-0.2	+63	+114	+32	+15	7 WR 99
+55	+0.34	+96	+79	+145	+267	5 YR 101

• This daughter of Marcys Scale Crusher has two daughters retained in the herd.  
 • Her dam sold in the 2021 Marcy Female Sale.

Bred to calve approximately April 14, 2023 to GROUP B BULLS.

## 145 **Marcys Pride 038**

Cow 02/02/20 reg: 19853509 tattoo: 038  
 KM Broken Bow 002 # Summitcrest Complete 1P55 #  
**Casino Bomber N33** Summitcrest Princess 0P12 #  
 Casino Annie K48 # DPL Upward L70  
 Casino Annie G64

Marcys Scale Breaker N Plus Marcys Scale Crusher  
**Marcys Pride 8191** Marcys Treasure 227 #  
 Marcys Pride 067 Redland Emblazon 2021  
 Marcys Pride 264 #

CED	BW	WW	YW	Milk	Doc	Dam Prod
+8	-0.3	+79	+122	+25	+21	3 WR 103
						2 YR 108
CW	Marb	RE	\$M	\$B	\$C	ANGUS GS
+66	+0.05	+0.93	+76	+131	+246	Powered by Neogen Genesock

- A young female by the high-selling Casino Bomber N33 with a progeny birth ratio of 99 combined with a progeny weaning ratio of 103 on her first calf who is retained in the herd.
- The dam has a progeny weaning ratio of 103 on three calves and a progeny yearling ratio of 108 on two head and the third dam is a Pathfinder Dam.

Bred to calve approximately March 20 to GROUP B BULLS.

## 146 **Marcys Pride 732**

Cow 02/01/17 reg: 18892719 tattoo: 732  
 Baldrige Waylon W34 # GAR-EGL Protege #  
**Baldrige Conductor C794** Baldrige Blackcap T163  
 Baldrige Forever Lady T269 Baldrige Rapid R31  
 Baldrige Forever Lady P164

Marcys Game Time GDAR Game Day 449 #  
**Marcys Pride 5127 #** Marcys Erica 390  
 Marcys Pride 376 Marcys Trailblazer 757  
 Marcys Pride 036

CED	BW	WW	YW	Milk	Doc	Dam Prod
-2	+4.2	+64	+116	+30	+15	5 WR 103
						5 YR 102
CW	Marb	RE	\$M	\$B	\$C	ANGUS GS
+55	+0.61	+0.46	+56	+148	+248	Powered by Neogen Genesock

- This productive cow has a progeny weaning ratio of 108 on three calves and a progeny yearling ratio of 109 on two head with two sons that have averaged \$5,750 and another in this sale.
- The dam is a Pathfinder Dam.

Bred to calve approximately April 2, 2023 to GROUP A BULLS or MARCY'S FULL BORE 030.

## 147 **Marcys Bluebird Lass 0184**

Cow 03/24/20 reg: 19853559 tattoo: 0184  
 Connealy Spur # Connealy Stimulus 8419 #  
**Marcys Spur 8107** Jazza of Conanga 8594 #  
 Marcys Erica 221 # Sitz Upward 307R #  
 Marcys Erica 867 #

Redland Emblazon 2134 # O C C Emblazon 854E #  
**M Diamond Bluebird Lass 1140** Redland Henrietta Pride 1812  
 M Diamond Thunderella 411 Sitz Alliance 6595 #  
 M Diamond Thunderella 295

CED	BW	WW	YW	Milk	Doc	Dam Prod
+10	+0.2	+70	+117	+24	+19	9 WR 103
						6 YR 102
CW	Marb	RE	\$M	\$B	\$C	ANGUS GS
+55	+0.30	+0.39	+90	+125	+252	Powered by Neogen Genesock

- A long bodied young female from a very productive, easy fleshing dam.

Bred to calve approximately March 20 to GROUP A BULLS.

## BREEDING GROUPS

### BREEDING GROUP A

- Marcys Full Bore 030
- Marcys Coalition 14
- Marcys Coalition 1154
- Marcys Atlantis 1128

### BREEDING GROUP B

- Marcys Coalition 117
- Marcys Spur 1128
- Amdahl Sculpted

### BREEDING GROUP C

- Marcys Coalition 1133
- Marcys Southern Charm 1186

Note that all the calves resulting from these breeding groups will require DNA parentage verification for registration.



## DATA COLLECTION ~ GENETIC IMPROVEMENT



We have always been about breeding the best females for the commercial industry for our environment. We are not interested in breeding extreme numbered EPD cattle that are terminal cross cattle if they don't have a feed wagon in front of them all the time.



The Maternal Plus program is an intense, detailed, record keeping process of every cow, breeding date, calving intervals, disposal reasons & more about the female. In addition, things it does not measure like temperament, udder quality, foot structure and mothering ability have always been closely monitored. We believe real data has more relevance than predictions. Our goal is to provide you with the most accurate information we can. Much of the Genomic projections are in the research-experiment stage with very little data on many predictions. Look for data that has a high accuracy behind it with these predictions. The more data we collect, hopefully the genomic information predicted on our cattle will become more accurate and relevant.

## IT IS THE COWHERD THAT MAKES THE DIFFERENCE!



**WE LOOK FORWARD  
TO SEEING YOU  
AT THE SALE!**



# COMMERCIAL BRED HEIFERS



## 20 Elite AI Bred Heifers Hamilton Valley Ranch

- Call Charlie Hamilton for details. 308/360-1225
- Hand-picked from the top of 115 AI heifers- AI bred May 18
- AI Bred to Marcy Angus Bulls Marcys Smooth Bore, Marcys N Plus Reloaded, Marcys Tahoe 1109 & Marcys Broadband
- Calfhood vaccinated, Bovi Gold 2X; Alpha 7 at birth: Vison 7 with somnus 2x: presponse 2X; Pinkeye 3X; Preg guard 2X; Ultrasounded Aug 20. Bunk broke, Electric fence broke, DNA tested & electronic ID tags in. DNA information will be available from HVR

*These heifers will be sold in groups of 5 or more up to the total of 20*

Group 1 \_\_\_\_\_

Group 2 \_\_\_\_\_

# DONATION HEIFER

## Donation Heifer

### Benefit Sheridan & Dawes County 4-H

- This free martin LT Converse daughter will be sold at the end of the sale as a fundraiser for 4-H in both counties. This will be a rollover auction for people wishing to support the kids in this area. Sheridan County is remodeling their sale and show barn and Dawes County has several projects as well. Funds will be split evenly between the counties.

Contacts that are representing both counties if you have any questions. Both Brooke & David plan to be at the sale.

Dawes County 4\_H  
Brooke Keim  
Dawes Co Fair Board  
308/430-3163

Sheridan County 4-H Foundation  
David Russell  
Security First  
308/430-2622



# SEMEN AVAILABLE FOR YOUR HEIFERS WITH THE PHENOTYPE AND BLOODLINES YOU CAN DEPEND ON!

## Marcys Smooth Bore 030



Marcys Smooth Bore 030 is a long bodied, super structured scamp is out of the Pathfinder dam Marcy Erica 221 that records a progeny birth ratio of 98 with progeny weaning and yearling ratios of 105 and 107 respectfully on 5 calves. She is the 4th generation of donor cows to stack generation for generation of great females with top quality udders and soundness in this herd sire. The top IMF bull ever measured by Sandhills Ultrasound with an IMF score of 10.09. New blood for most people he should calve easily and add the type & kind desirable.

REFERENCE SIRE		Marcys Smooth Bore 030			
	Bull	02/11/20	registration: +19855639	tattoo: 030	
	KM Broken Bow 002 #		Summitcrest Complete 1P55 #		
<b>Spring</b>	Cove Reno 4021		Summitcrest Princess 0P12 #		
	Spring Cove Liza 021		C C A Emblazon 702 #		
	Sitz Upward 307R #		Spring Cove Liza 721		
	Marcys Erica 221 #		Connealy Onward #		
	Marcys Erica 867 #		Sitz Henrietta Pride 81M		
			Baldrige Kaboom K243 KCF #		
			Marcys Erica 629		
CED	BW	WW	YW	Milk	Doc
<b>+13</b>	<b>-1.3</b>	<b>+75</b>	<b>+131</b>	<b>+31</b>	<b>+22</b>
CW	Marb	RE	\$M	\$B	\$C
<b>+46</b>	<b>+1.00</b>	<b>+.53</b>	<b>+69</b>	<b>+149</b>	<b>+262</b>

REFERENCE SIRE		Square B Outrigger 0002			
	Bull	08/22/20	registration: +20015297	tattoo: 0002	
	Coleman Charlo 0256 #		O C C Paxton 730P #		
<b>S A V</b>	Rainfall 6846		Bohi Abigale 6014		
	S A V Blackcap May 4136		S A V 8180 Traveler 004 #		
			S A V May 2397 #		
	S A V Resource 1441 #		Rito 707 of Ideal 3407 7075		
<b>Square B</b>	Conanga 7019		S A V Blackcap May 4136		
	Eura Elga of Conanga 9109 #		S A V Bismarck 5682 #		
			Eura Cal of Conanga 56B		
CED	BW	WW	YW	Milk	Doc
<b>+7</b>	<b>+0.9</b>	<b>+65</b>	<b>+124</b>	<b>+28</b>	<b>+17</b>
CW	Marb	RE	\$M	\$B	\$C
<b>+24</b>	<b>+.33</b>	<b>+.88</b>	<b>+72</b>	<b>+97</b>	<b>+198</b>

## Square B Outrigger

Square B Outrigger is a long bodied, outstanding heifer bull we have used cleanup the last 2 years. Selected as the high selling bull at Square B in 2021. This Rainfall x Resource bred bull is an ET product of some of their most popular donor females. He recorded the biggest REA in the sale with an IMF ratio of 136 & a big scrotal. He is a long bodied, smooth shouldered bull that should leave great maternal females. Lots of depth and he can really move on his feet.



# MARCY CATTLE COMPANY AND MARCY LIVESTOCK

PO Box 66  
Chadron, NE 69337

George & Andrea Marcy  
Cell: 308/430-2005  
marcylivestock@msn.com

[www.MarcyCattleCompany.com](http://www.MarcyCattleCompany.com)

Presorted  
**FIRST CLASS**  
US Postage  
Paid  
Ballyhoo Printing  
59457

**FIRST CLASS**

**Deep-Ribbed, Fertile, Easy-Fleshing Cowmakers  
Extraordinary Feedlot Performance**



*Want  
heavier-muscled,  
deeper-ribbed,  
easier-fleshing,  
thicker-quartered  
Angus cattle?*



***Use Marcy Cattle Company Bulls!***

