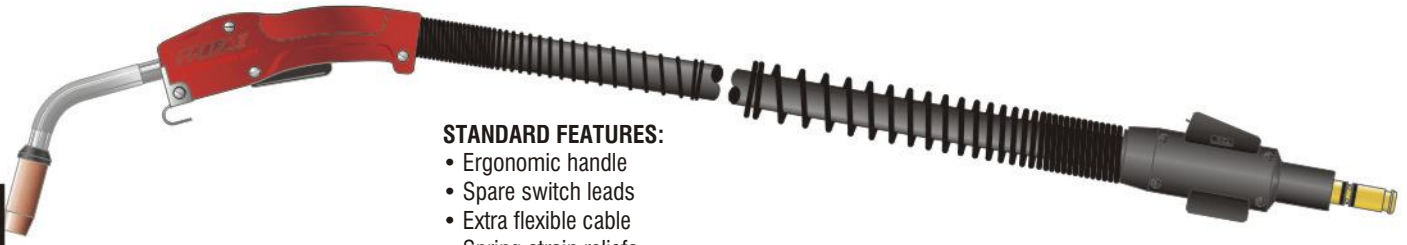




Platinum 450 Amp Heavy Duty



450 Amp H.D. Mig Gun



STANDARD FEATURES:

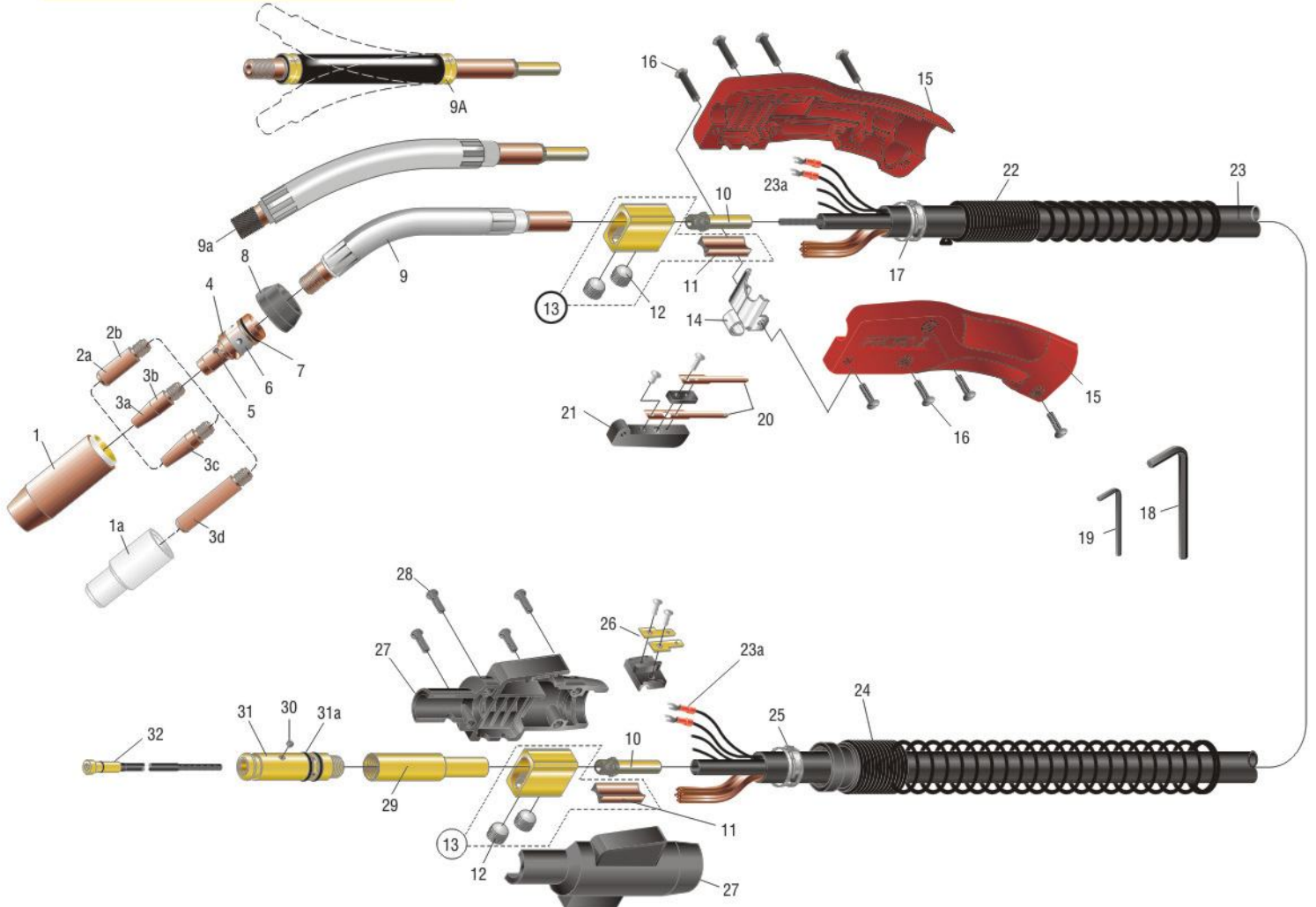
- Ergonomic handle
- Spare switch leads
- Extra flexible cable
- Spring strain reliefs
- Jacketed gooseneck

PROFAX NO.	LENGTH	WIRE SIZE	PROFAX NO.	LENGTH	WIRE SIZE	PROFAX NO.	LENGTH	WIRE SIZE	PROFAX NO.	LENGTH	WIRE SIZE
HD450-3545-10	10'	.035-.045	HD450-3545-12	12'	.035-.045	HD450-3545-15	15'	.035-.045	HD450-3545-20	20'	.035-.045
HD450-052-10	10'	.052	HD450-052-12	12'	.052	HD450-052-15	15'	.052	HD450-052-20	20'	.052
HD450-116-10	10'	1/16"	HD450-116-12	12'	1/16"	HD450-116-15	15'	1/16"	HD450-116-20	20'	1/16"
HD450-564-10	10'	5/64"	HD450-564-12	12'	5/64"	HD450-564-15	15'	5/64"	HD450-564-20	20'	5/64"
									HD450-3545-25	25'	.035-.045
									HD450-052-25	25'	.052
									HD450-116-25	25'	1/16"
									HD450-564-25	25'	5/64"

TO ORDER DIRECT CONNECT MIG GUNS

- Standard -** All wire feeders that accept the "PROFAX" rear adapter. e.g. HD450-3545-10
Lincoln® Direct - Add an **LN** for the standard Lincoln 3/4" dia. rear adapter. e.g. HDLN450-3545-10
 Add an **LP** for the Lincoln Powermig 255. e.g. HDLP450-3545-10
Miller® Direct Add an **M**. e.g. HDM450-3545-10
Euro-Quick Add an **X**. e.g. HDX450-3545-10

SEE PAGES 66-67 for more details on direct connects
 SEE PAGES 78-79 for list of adapter kits





Platinum HD450 Amp Mig Gun Parts List



NO.	PROFAX NO.	DESCRIPTION	NO.	PROFAX NO.	DESCRIPTION
1.	27S50	H.D. nozzle 1/2" (copper)	8.	17SW	H.D. shock washer
	27S62	H.D. nozzle 5/8" (copper) (standard)	9.	64A45-9HDJ	Jacketed gooseneck 45° (standard)
	27S75	H.D. nozzle 3/4" (copper)		64A60-9HDJ	Jacketed gooseneck 60° (optional)
	27S50GL	H.D. nozzle 1/2" (copper) (Use 17SLT series tips)		64A180-9HDJ	Jacketed gooseneck 180° (optional)
	27S62GL	H.D. nozzle 5/8" (copper)	9a.	64A45-4R-9HDJ	Jacketed gooseneck 45° (optional)
	27S75GL	H.D. nozzle 3/4" (copper)	9b.	TF-4HD	Flexible barrel (optional)
	27T38	Tapered nozzle 3/8" (brass) (Use 17SLT series tips)		TFX-4HD	Flexible barrel for extreme heat (optional)
	27T50	Nozzle 1/2" bottle (copper)	10.	64N	Nipple
	27T50HD	H.D. nozzle 1/2" bottle (copper)	11.	114	Separator
	27K50	M.D. nozzle 1/2" (copper)	12.	A-532-24	9/16"-18 ball point screws
1a.	39	Insulator for use w/self-shielded flux core wire only	13.	104	Cable connector block assembly
2a.	17S-35	Contact tip .035 .044	14.	154HD	Hanger
	17S-40	Contact tip .040 .049	15.	845HD	Heavy duty handle w/screws
	17S-45	Contact tip .045 .054	16.	122FM-SET	Binders (4 ea.) and screws (4 ea.) for handle
	17AS-364	Contact tip 3/64" aluminum .060	17.	134-14	Clamp - handle
	17S-52	Contact tip .052 .064	18.	AL-300-25	7/32" hex wrench
	17S-116	Contact tip 1/16" .073	19.	44-25	5/64" hex wrench
	17AS-116	Contact tip 1/16" aluminum .078	20.	92C	Switch contacts w/screws
	17S-564	Contact tip 5/64" .093	21.	92	Trigger switch assembly
2b.	16S-35	Contact tip .035 .044	22.	144-6S	Spring strain relief for handle
	16S-40	Contact tip .040 .049	23.	450-10	10' replacement cable assembly
	16S-45	Contact tip .045 .054		450-12	12' replacement cable assembly
	16S-52	Contact tip .052 .064		450-15	15' replacement cable assembly
	16S-116	Contact tip 1/16" .073		450-20	20' replacement cable assembly
	16S-564	Contact tip 5/64" .093		450-25	25' replacement cable assembly
3a.	17ST-35	Contact tip .035 .044		450CK	Cloth wrapped cable, bulk (per foot)
	17ST-40	Contact tip .040 .049	23a.	244	Terminal
	17ST-45	Contact tip .045 .054	24.	R185-S	spring
	17ST-52	Contact tip .052 .064	25.	134-14	Clamp - connector block
	17ST-116	Contact tip 1/16" .073	26.	194	Connector tab assembly
	17ST-564	Contact tip 5/64" .093	27.	R185-H	Housing
3b.	16ST-35	Contact tip .035 .044	28.	R185-SC	Screws for housing (4)
	16ST-40	Contact tip .040 .049	29.	R174-UA	Standard connector plug w/64N
	16ST-45	Contact tip .045 .054		R174-UAG	Connector plug w/gas hole w/64N
	16ST-52	Contact tip .052 .064	30.	44C	Set screw for conduit 8-32
	16ST-116	Contact tip 1/16" .073	31.	R174-E	Connector, Esab®
	16ST-564	Contact tip 5/64" .093		R174-H	Connector, Hobart®
3c.	17SLT-35	Contact tip .035 .044		R174-L	Connector, Lincoln®
	17SLT-40	Contact tip .040 .049		R174-M	Connector, Miller®
	17SLT-45	Contact tip .045 .054		R174-T	Connector, standard
	17SLT-52	Contact tip .052 .064	31a.	224	O-ring
	17SLT-116	Contact tip 1/16" .073	32.	44-3545-15	15' wire conduit assembly .035-.045
	17SLT-564	Contact tip 5/64" .093		44-116-15	15' wire conduit assembly .052-1/16"
3d.	18S52	Contact tip .052 .064		44-564-15	15' wire conduit assembly 5/64"
	18S116	Contact tip 1/16" .073		44-3545-25	25' wire conduit assembly .035-.045
	18S564	Contact tip 5/64" .093		44-116-25	25' wire conduit assembly .052-1/16"
4.	57HD	Gas diffuser		44-564-25	25' wire conduit assembly 5/64"
5.	44C	Set screw for gas diffuser/conduit		44N-3545-15	15' nylon lined conduit assembly(aluminum) .035-.047
6.	240	Retaining ring		44N-116-15	15' nylon lined conduit assembly(aluminum) 1/16"
7.	260	O-ring			

450 Amp H.D. Mig Gun



Universal flow tester

To convert to CFH divide
LPM/.472 = CFH

PROFAX NO.	DESCRIPTION
50020	Flow tester liters per minute

Weld Fillet Gage



- 7 Piece Weld Fillet Gage
- Stainless Steel Construction
- Marked in Standard and Metric Units
- For:
 - Checking Fillet Throat Sizes
 - Checking Fillet Leg Size
 - Works on Both Convex and Concave Welds
 - Weld Sizes 1/8" (3.2mm) — 1" (25.4mm)

• Carrying Pouch Included

PROFAX NO.	DESCRIPTION
WFG	Weld Fillet Gage



Platinum 450 Amp Heavy Duty

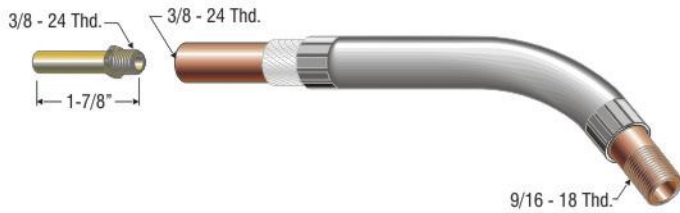


450 Amp H.D. Mig Gun

PROFAX NO.	DESCRIPTION	TIP I.D.		PROFAX NO.	DESCRIPTION							
17S-35	Contact tip .035	.044	<p style="text-align: center;">Recessed</p> <p style="text-align: center;">M8 - 1.25 Thd.</p> <p style="text-align: center;">3/8"</p> <p style="text-align: center;">1.350</p> <p>*Standard tip shipped with gun.</p>	27T38	Nozzle 3/8"	<p>3/8" I.D.</p> <p>2-13/16"</p> <p>(Use with 17SLT series tips)</p>						
17S-40	Contact tip .040	.049		<p style="text-align: center;">Recessed</p> <p style="text-align: center;">M8 - 1.25 Thd.</p> <p style="text-align: center;">3/8"</p> <p style="text-align: center;">1.350</p>	27T50	Nozzle 1/2"	<p>1/2" I.D.</p> <p>2-7/8"</p> <p>(Use with 17ST series tips)</p>					
17S-45	Contact tip .045	.054			<p style="text-align: center;">Recessed</p> <p style="text-align: center;">M8 - 1.25 Thd.</p> <p style="text-align: center;">3/8"</p> <p style="text-align: center;">1.350</p>	27T50HD	H.D. Nozzle 1/2"	<p>1/2" I.D.</p> <p>2-7/8"</p> <p>(Use with 17ST series tips)</p>				
17AS-364	Contact tip 3/64" aluminum	.060				<p style="text-align: center;">Flush</p> <p style="text-align: center;">M8 - 1.25 Thd.</p> <p style="text-align: center;">3/8"</p> <p style="text-align: center;">1-1/2"</p>	27K50	M.D. Nozzle 1/2"	<p>1/2" I.D.</p> <p>2-7/8"</p> <p>(Use with 17ST series tips)</p>			
17S-52	Contact tip .052	.064					<p style="text-align: center;">Flush</p> <p style="text-align: center;">M8 - 1.25 Thd.</p> <p style="text-align: center;">3/8"</p> <p style="text-align: center;">1-1/2"</p>	27S50	H.D. Nozzle 1/2"	<p>1/2" I.D.</p> <p>2-7/8"</p> <p>(Use with 17ST series tips)</p>		
17S-116	Contact tip 1/16"	.073						<p style="text-align: center;">Gasless Tip</p> <p style="text-align: center;">M8 - 1.25 Thd.</p> <p style="text-align: center;">3/8"</p> <p style="text-align: center;">2"</p> <p>(Use with #39 insulator)</p>	27S62	H.D. Nozzle 5/8"	<p>5/8" I.D.</p> <p>2-7/8"</p>	
17AS-116	Contact tip 1/16" aluminum	.078							<p style="text-align: center;">Gasless</p> <p style="text-align: center;">2-1/4"</p> <p>(Use with 18 series tips)</p>	27S75	H.D. Nozzle 3/4"	<p>3/4" I.D.</p> <p>2-7/8"</p>
17S-564	Contact tip 5/64"	.093								<p style="text-align: center;">Diffuser</p> <p style="text-align: center;">M8 - 1.25 Thd. 9/16 - 18 Thd.</p> <p style="text-align: center;">1-3/4"</p>	27S50GL	H.D. Nozzle 1/2"
16S-35	Contact tip .035	.044	<p style="text-align: center;">Insulator/Thread Protector</p> <p style="text-align: center;">2-1/4"</p> <p>(Use with 18 series tips)</p>								27S62GL	H.D. Nozzle 5/8"
16S-40	Contact tip .040	.049		<p style="text-align: center;">Insulator</p> <p style="text-align: center;">7/8" I.D.</p> <p style="text-align: center;">3/4"</p>							27S75GL	H.D. Nozzle 3/4"
16S-45	Contact tip .045	.054										
16S-52	Contact tip .052	.064										
16S-116	Contact tip 1/16"	.073										
16S-564	Contact tip 5/64"	.093										
16ST-35	Contact tip .035	.044										
16ST-40	Contact tip .040	.049										
16ST-45	Contact tip .045	.054										
16ST-52	Contact tip .052	.064										
16ST-116	Contact tip 1/16"	.073										
16ST-564	Contact tip 5/64"	.093										
18S52	Contact tip .052	.064										
18S116	Contact tip 1/16"	.073										
18S564	Contact tip 5/64"	.093										



Platinum 450 Amp Heavy Duty



PROFAX NO.	DESCRIPTION
64A45-9HDJ	Jacketed conductor tube 45°
64N	Nipple - included

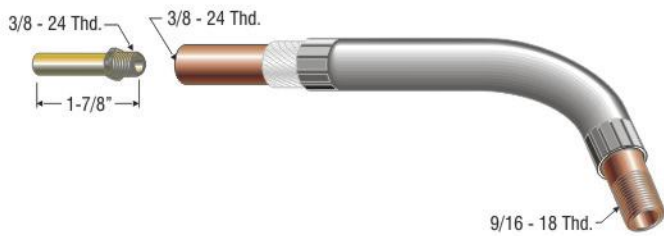
Special length and bend gooseneck available on request.



PROFAX NO.	DESCRIPTION
64A180-9HDJ	Jacketed conductor tube 180°
64N	Nipple - included

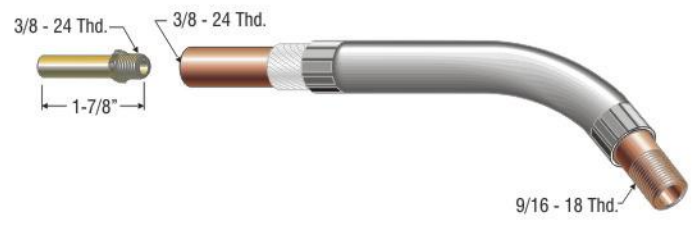
Special length and bend gooseneck available on request.

450 Amp H.D.
Mig Gun



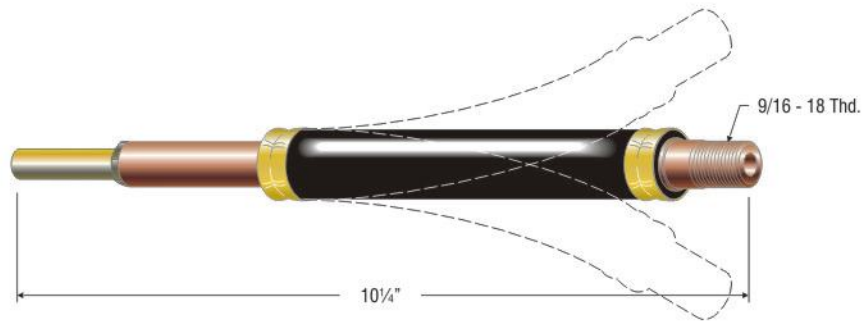
PROFAX NO.	DESCRIPTION
64A60-9HDJ	Jacketed conductor tube 60°
64N	Nipple - included

Special length and bend gooseneck available on request.

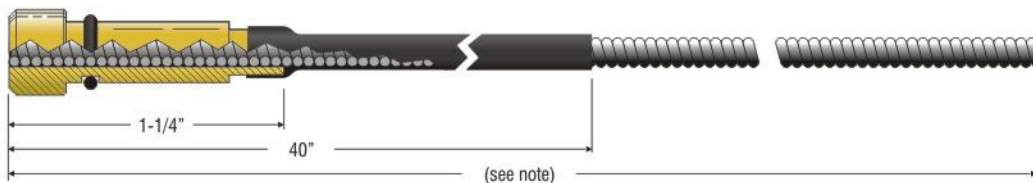


PROFAX NO.	DESCRIPTION
64A45-4R-9HDJ	Jacketed conductor tube 45°
64N	Nipple - included

Special length and bend gooseneck available on request.



PROFAX NO.	DESCRIPTION	PROFAX NO.	DESCRIPTION	FOR SPECIAL APPLICATIONS THESE TF-4HD'S ARE AVAILABLE ON REQUEST.
TF-4HD	PROFAX heavy duty flexible barrel	TF-4HD-8SP	PROFAX flexible barrel 12 3/4" over all length	
TFX-4HD	PROFAX heavy duty flexible barrel for extreme heat	TF-4HD-12SP	PROFAX flexible barrel 16 3/4" over all length	
		TF-4HD-16SP	PROFAX flexible barrel 20 3/4" over all length	



Note: 15' wire conduit assembly (16' - 0" o.a.l.)
25' wire conduit assembly (26' - 0" o.a.l.)

PROFAX NO.	DESCRIPTION	I.D.	O.D.
44-3545-15	15' wire conduit assembly — used with .035-.045 diameter wire	.067	.187
44-116-15	15' wire conduit assembly — used with .052-1/16" diameter wire	.078	.187
44-564-15	15' wire conduit assembly — used with 5/64" diameter wire	.102	.187
44N-3545-15	15' wire conduit assembly — used with .035-3/64" diameter aluminum wire	.064	.187
44N-116-15	15' wire conduit assembly — used with 1/16" diameter aluminum wire	.090	.187
44-3545-25	25' wire conduit assembly — used with .035-.045 diameter wire	.067	.187
44-116-25	25' wire conduit assembly — used with .052-1/16" diameter wire	.078	.187
44-564-25	25' wire conduit assembly — used with 5/64" diameter wire	.102	.187



Direct Connects All **Platinum** 400 & 450 Amp Mig Guns



The following direct connects are available by placing the letters shown below before the gun package number.

Example: add an "M" to 400-3545-10; eg M400-3545-10 is now a Miller® direct connect gun.

400 & 450 Mig Gun
Direct Connects

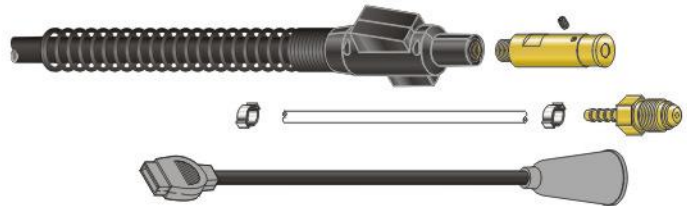
E-Esab® (L-Tec/Linde): All wire feeders with the MT200/400 Linde mig gun adapter installed.



H-Hobart®: Betamig 200, 250 and 251.



LN-Lincoln®: LN7, LN8, LN9, LN25, LN742, and Synergic 7. Also LN10, DH10, & STT10 with K1500-1 installed.



Note: For LN-25 Pro Order Gun with standard PROFAX back end and LAK 354 installed

LP-Lincoln®: Powermig 200, 210, 215XT, 225, 255, 255C, 300 and 350MP



M-Miller®: S21E, S22A, S32, Super 32, Extreme 12VS, and all 50, 60, 72, and 74 series feeders. 8VS and 12VS, R115. Millermatic® 300 & 350



X-Euro-Quick: Equipment

Systems I, Universal, Mity 4.
Esab®: Mig 2E, Mig 4HD, Mig 4AF, Migmaster 250,251, 252 and 300I, and Mobilmaster.
Powcon®: PD10, PD20 & PD30.
PROFAX: Pro IIx and Pro IVx.



Direct Connect is also available for the following

OQ-Oxomatic®: PS-30Q and AVC-30Q.



*For adapter kits for other style feeders see page 78.

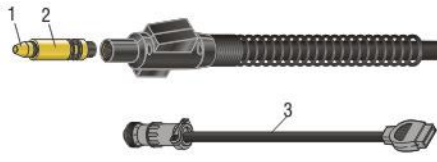
Direct Mount Conversion Kits

Used for converting an existing gun to a different wire feeder.

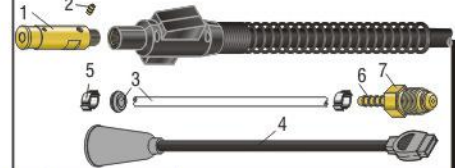
Standard: TAK-400



Miller®: MAK-400



Lincoln®: LAK-400



NO.	PROFAX NO.	DESCRIPTION
1.	R174-T	Connector - standard PROFAX
2.	AK-354	Control cord

NO.	PROFAX NO.	DESCRIPTION
1.	R174M-N	Nipple for Miller® connection
2.	R174-M	Connector for Miller®
3.	MSAK-354	Control cord

NO.	PROFAX NO.	DESCRIPTION
1.	R174-LC	Connector for Lincoln®
2.	35-170-5	Gas nipple
3.	MSAK-353	Gas hose w/grommet
4.	LAK-354	Control cord
5.	AK-353-2A	Gas hose clamp (2)
6.	1245	Gland
7.	1255	Nut

400 & 450 Mig Gun Conversion Kits

EAK-400 **Esab®**(L-Tec/Linde): All wire feeders with the MT200/400 Linde mig gun adapter installed.

LAK-400 **Lincoln®**: LN7, LN8, LN9, LN25, LN742, and Synergic 7. Also LN 10, DH10, & STT10 with K1500-1 installed.

MAK-400 **Miller®**: Millermatic 200, 250, 250x, 251, 300 and Vintage. S21E, S22A, S32, Super 32, Extreme 12US, and all 50, 60, 72, and 74 series feeders. 8VS and 12VS, R115

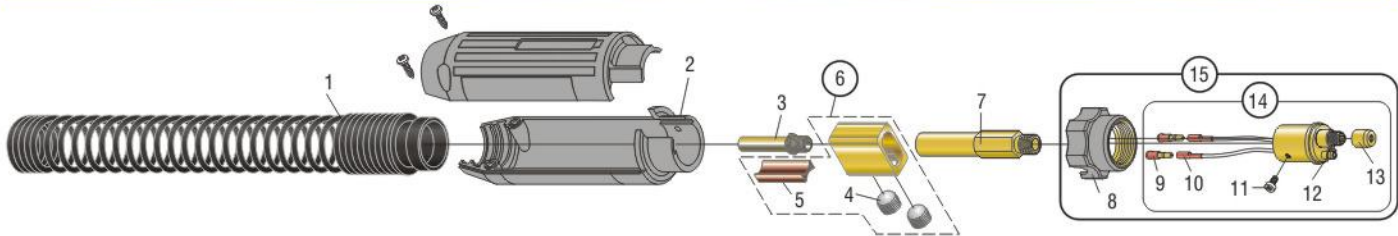
Hobart®: Betamig 2510 and Olympic VS.

O1AK-400 **Oxomatic®**: AVC I, AVC 8 & PT8.

OQAK-400 **Oxomatic®**: PS-30Q & AVC-30Q.

TAK-400 **Hobart®** series 2000, 2200, 2210, 2400, 2410, Heavy Duty, Model 17, Hefty, Mijit 17, Portafeed 17, Portawire 17, Portafeed 1000, Ultrafeed 1000, Extreme 12US, Thermal Arc® TA-3, TAF-2, TAF-4 & Viking 250. Profax Pro II, Pro IV, Lincoln® Wirematic 250 & 255 and LN 10, DH10, & STT10 with K1500-2 installed.

Euro-Quick End for the Platinum Compact 400, Slim Line 400, Heavy Duty 400 & 450 Amp Mig Gun



NO.	PROFAX NO.	DESCRIPTION	NO.	PROFAX NO.	DESCRIPTION	NO.	PROFAX NO.	DESCRIPTION
1.	R185-S	Spring	7.	140-UA	Euro connector	13.	174EX-1C	Conduit nut
2.	2545-3	Cable support	8.	2545-4	Machine Nut	14.	2545	Euro-Quick connector assembly
3.	62N	Nipple	9.	2545-6	Trigger connection male	15.	2545-C	Euro-Quick connector assembly w/machine nut
4.	A-532-24	9/16"-18 ball point screw	10.	35-350-1	Butt connector			
5.	114	Separator	11.	2-MS	Metric screw			
6.	104	Cable connector block assembly	12.	35-40-1	O-ring			

Regulator/Flowmeter

SPECIFICATIONS:

- Brass body
- Preset @ 30 psi
- Flow meter range - 10-60 scfh
- Economical design



High Quality Multi-Purpose 8 Way Mig Plier

Plier is packaged on display card.



PROFAX NO.	GAS SERVICE	CGA INLET	PROFAX NO.	DESCRIPTION
RF1430-580	Argon & Argon/CO ₂ Mixes	580	8WMP	8 Way Mig Plier
RF1430-320	CO ₂	320		