

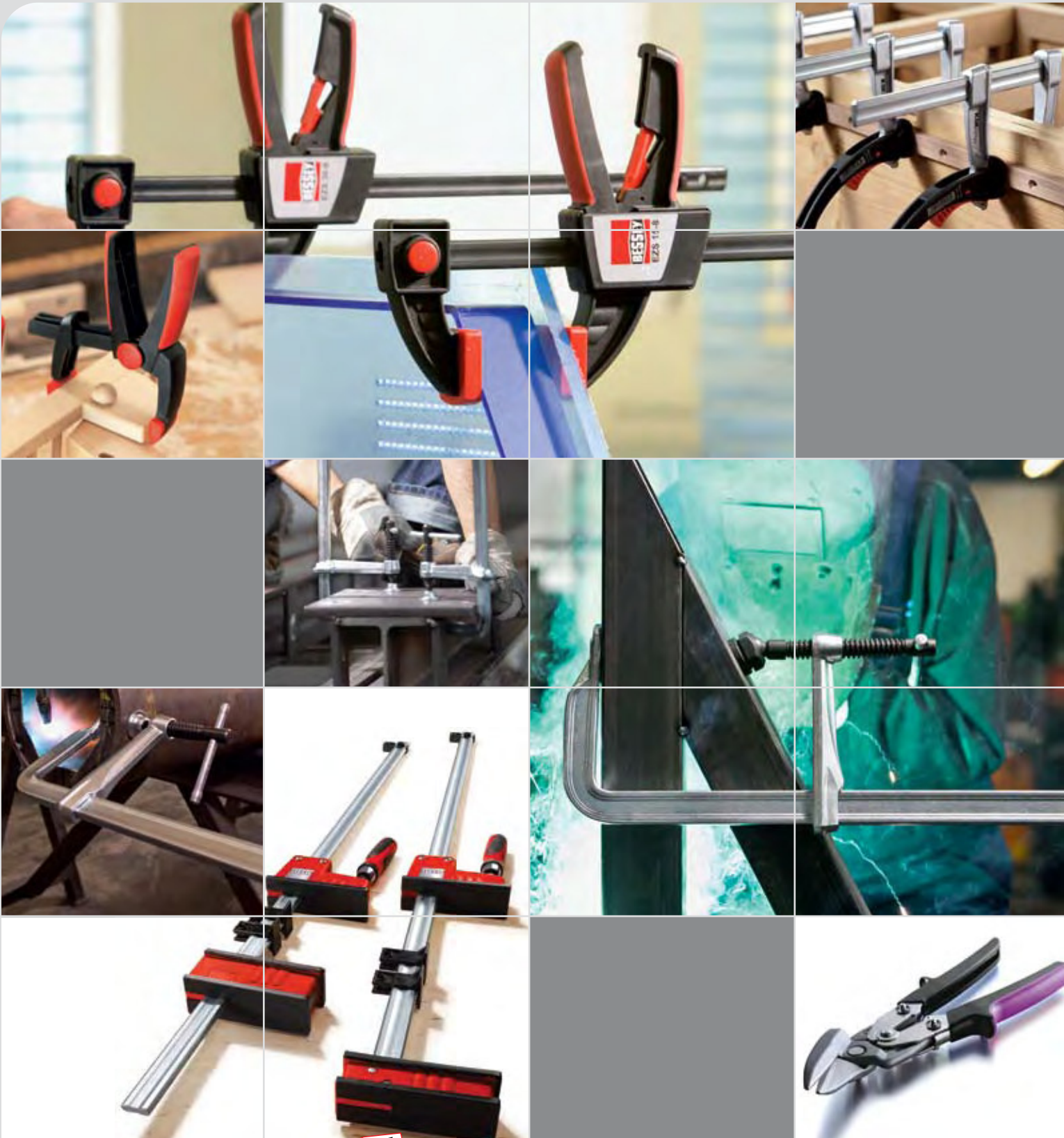
BESSEY® clamping - and cutting technology

# Complete catalogue 2010/2011

Effective April 1 2010.



Simply better.



See the **NEW** BESSEY® website at ... [www.besseytools.com](http://www.besseytools.com)

# BESSEY®. Simply better.

## Best clamping - and cutting technology since 1889.

“One, who stops improving himself, has already ceased to be good” - we behave and work as per this guiding principle of Max Bessey, the founder of our company. Again and again, over 110 years already. Simply go and see for yourself: An overview of our entire range of products - and services is given in the following pages. Be it clamping - or cutting technology, BESSEY® offers incomparably innovative solutions with the proven BESSEY® quality.

Make the most of our innovative edge and experience why the following still holds true in our industry:  
“BESSEY®. Simply better.”

### Innovative ideas

Our company has been setting new benchmarks in the field of clamping and cutting technology since its inception in the year 1889. Based on our expertise in development, we have been working on new and innovative ideas for continuous product improvement. We invent and perfect the patented brands in our plant in Bietigheim, these often become models for an entire generation of clamping and cutting tools.

Often copied, but never duplicated: This applies to the original BESSEY® malleable cast iron-screw clamps introduced in 1936, or even to the original BESSEY® all-steel-screw clamps that were patented in 1952.



### Highest quality

Our fundamental principle: BESSEY® brands have been manufactured for constant loads, not for temporary ones against the comparable products of our competitors. We have distinguished ourselves and earned the respect of customers for decades owing to our unrivalled quality.

Our brands are manufactured using the highest quality materials. Moreover, all components are personally checked by our experienced technicians and developers who apply the most advanced inspection procedures and testing methods. We do this for you as a customer using our products in daily, practical use.

We always guarantee you maximum comfort, safety, user-friendliness and ergonomics. Numerous certificates as well as longstanding partners and customers in more than 100 countries all over the world are the best proof. Prove it to yourself and try one!



### Why buy BESSEY®?

- Quality
- Innovation
- Great value
- End-user comfort
- Superior engineering

Customer Category	Discount (Multiplier) From List Price in Catalog			
	VB0001	VB0002	VB0003	VD0001 & VD0002





**Experienced technicians and developers personally check every BESSEY® product.**



### **Wide range of products and services.**

While browsing through this catalogue, you will observe that BESSEY® strives to offer you the best solution for your tasks and applications. In clamping, as well as cutting technology. From rigid to flexible clamping, from curved to straight cutting. From heavy duty clamps to light lever clamps, from delicate Jewellers' snips to robust titanium coated cutters.

### **Personal service**

Reliability, confidence and a sense of responsibility are the backbone of our partnership with our customers. For many years, we have been working towards manufacturing exclusive and practical brands that will simplify your life considerably today - as well as tomorrow. Of late, we have started supporting our trading partners with comprehensive product training programs in a personal and informal atmosphere. Directly on-site in Bietigheim, in our in-house training centre and, in the field where our distributors and personnel work, live and play.



**Longstanding global partners and customers in more than 100 countries have faith in BESSEY® quality.**



# Table of contents

## 1-2 High-performance clamps

Medium duty (1800-S)  
Regular duty (2400S)  
Regular duty (2400S) with extra deep reach  
Heavy duty (4800S)  
Extra heavy duty (7200S)  
Extra high pressure (8500HPC)



## 10 Parallel clamp accessories & kits for K Body® REVO™

KR-AS jaw adapter  
KBX20 Extender  
Extender kit  
KP Blocks  
Framing kit



## 19-20 One-handed, light duty & clutch style clamps

Light duty, zinc die cast, step over (LMU)  
Light duty zinc die cast (LM)  
Clutch style (GSCC)  
Clutch style (DHBC) with double jaw  
PowerGrip (PG) heavy duty one-hand clamp  
DuoKlamp®, large surface one handed clamp  
DuoKlamp® combo kit  
DuoKlamp®, accessory, DKX DuoKlamp® Extender



## 3 Multi-Purpose clamp KombiKlamp™

KombiKlamp™



## 11 Vario K Body® REVO™ (Variable jaw version)

Vario K Body® REVO™



## 21 Welding angle clamps

Angle clamp (WSM)  
Multi-angle vise set (WVS)



## 4-6 Shop floor clamps

Light duty (MMS, 660-S, 1200-S)  
Medium duty (SGL)  
Regular duty (SQ)  
Heavy duty (STB)  
Claw clamp (CL)  
Power clamp (TSC)  
OMEGA bend clamps (RSC)



## 12 Accessories for K Body® REVO™

KR-VO variable jaw  
KR-J2K sliding jaw  
KR-JP jaw pads  
KR-EC end clips  
KR-RPP rail protection pieces  
2K handle  
Wood handle  
KBTP-4 end-clips (classic style)



## 22 Strap clamps

Variable angle (VAS)  
Vario corner clips (VAC)  
Ratchet tie down, base (BAN)



## 7 classiX®

classiX® - Standard pad  
classiX® - Heavy duty pad



## 13-16 Malleable cast bar clamps

Light duty (TG & TGJ) series  
Medium duty (TG & TGJ) series  
Heavy duty (TGK) series  
Deep reach (CDS)  
TC series  
Bar clamp kits



## 23-24 Angle & miter clamp

Angle clamps (WS)  
Table mount clamp (TK)  
Corner clamp (WS)  
Miter clamp fixture (GS)  
Miter clamp set (MCX)  
Irregular angle clamp set (ES)



## 8 J series clamps

Light duty (J18)  
Regular duty (SQJ)  
Regular duty (2400J)  
Heavy duty (4800J)



## 17 Lever clamps

Lever clamps  
KliKlamp®, light duty lever clamp  
Wood Klemmy clamp



## 25-26 Hold down products

RiteHite (Model L)  
RiteHite (Model S)  
Hold down table clamp  
Claw machine clamp (MCL)  
Jig & fixture clamp (FC)



## 9 K Body® REVO™ (Fixed jaw version)

K-Body® REVO™



## 18 EZS one-hand clamp

EZS clamps  
EZS combo kit



**27 Edge clamps**

Edge clamp, one hand (EKT)  
 Edge clamp (KF2-4)  
 3-way edge clamp, light duty (EC)  
 Spindle clamps

**28-29 Spring clamps**

VarioClippix® (XV) variable spring clamp  
 VarioClippix® (XV) variable spring clamp, double jaw  
 Clippix® needle nose plastic spring clamps (XCL)  
 Clippix® (XC) plastic spring clamps  
 Plastic spring clamps set  
 Ratcheting spring clamps, deep reach (XCRU)  
 Ratcheting spring clamp set (XCR)  
 Steel spring clamps (XM)

**30 Pipe clamps**

Pipe clamp, H style (BPC)  
 Pipe clamp, traditional style (PC)

**31-33 C-clamps**

540 series ductile alloy  
 Regular duty (CDF), extra deep throat  
 Regular duty (CDFCHV), extra deep throat  
 Heavy duty (100 Series)  
 Heavy service (HS Series)  
 Light duty (CM), malleable cast  
 Quick release (QRCC)  
 Double head (DHCC)

**34 Grip pliers**

SuperGrips™ with profiled rail (SG)  
 SuperGrips™ pipe clamp (SG)  
 SuperGrips™ deep reach clamp (SG)  
 SuperGrips™ welder's fork (SG)

**35-36 Industrial magnets**

Magnetic squares (WMS)  
 Double magnetic square (WMS)  
 Multi-angle square (WMS)  
 Arrowhead magnetic square (WMS)  
 "Chunky" magnetic square (CMS)  
 "Big Daddy" magnetic square (BDMS)  
 "On/Off" magnetic square (WMS)  
 Magnetic ground clamps (MGC)  
 Mag Pick-Up (MPU)  
 MagStick (MS)  
 MagWand (MW)  
 MagSweep (MSP)

**37 Other clamps**

Mini clamp (AM4)  
 UniKlamp®, large surface case clamp  
 Portable mini-vise (S)  
 Wood handscrew clamps (HS)  
 Panel carrier (KF)  
 T-bar sash clamps  
 Solid surface seaming tool (PS)  
 Flooring strap clamps (SVH)

**38-39 Accessories**

Plastic replacement cap  
 Standard pads  
 MorPads  
 Clamp force indicator (FIN)  
 Variable angle device (VAD)  
 Pipe clamp jaws (PC Jaw)  
 Grip handles  
 2K handle/spindle with pad  
 Sliding arm assembly combi-set  
 Sliding arms  
 Wedges

**41-44 Snips & knives**

Aviation snips (D16)  
 Special hard cutting snips (D29SS)  
 Offset snips, optimized (D29ASS)  
 Offset, extra hard, high tolerance, Titanium (D27AH TIN)  
 Offset, extra hard, high tolerance (D27AH)  
 Offset-snips, short radii (D08)  
 Offset-snips, standard (D16A)  
 Long-nose, multi-purpose (D22AL)  
 Strap cutter (D123)  
 Super nibbler (D24)  
 MultiSnip - Straight (D47, D48)  
 MultiSnip - Offset (D48A)  
 Cable cutters (D49)

**41-44 Snips & knives (continued)**

Combinox (D50)  
 MultiSnip master (D51)  
 Electrician scissor (D53)  
 Jeweler's snip (75)  
 Professional shears (D860)  
 American pattern snips (D146)  
 SuperPower snips - Straight blade (DSPS)  
 SuperPower snips - Offset blade (DSPC)  
 Folding utility knife - Aluminum handle  
 Folding utility knife - Wood handle  
 Folding utility knife - ABS comfort grip handle  
 Folding utility knife set - ABS comfort grip handle

**45-46 Industrial fluids & compounds**

Lab-metal®  
 Hi-Temp Lab-metal®  
 Lab-solvent  
 Heat block  
 Spatter release  
 Stick-Kut™ lubricating stick wax  
 Thread cutting oil  
 Rel-Saw band saw fluid  
 Relton cutting fluids  
 Relton Air-Flo air tool oil

**47 Specialty products**

Torque multipliers (X4)  
 Anti-Backlash torque multiplier

**48 Reco induction bearing heaters**

Reco induction bearing heaters  
 Cross bars for bearing heaters  
 Raising blocks  
 Pyrometer/Thermometer

**49-50 Index**



## High-performance clamps

# Bar clamps for welding and fabricating

### Your benefits at a glance:

#### 1 High stability

Patented rail profile offers more clamp force with fewer spindle turns.

#### 2 BESSEY® MorPad

MorPad tilts to 35°. Patented construction extends clamp life at full capacity.

#### 3 Tempered spindle

Heat treated, high carbon Acme threaded screw – tempered and quenched to give greater load capacity with longer service life. Spatter resistant.

#### 4 Sturdy Tommy bar

High-strength electro-galvanized sliding pin T-handle – rounded ends for comfort, size engineered to load capacity. Ergonomic grip is standard equipment on 1800-S and 2400S series.

#### 5 U-shaped sliding arm

New u-shaped sliding arm offers straight line power transmission. Great stability.



Ball-in-socket technology means greatly extended clamp life and, at full pressure ... by BESSEY®. Patented.



### Medium duty (1800-S)



BESSEY® Product #	Throat Depth Inches	Clamping Capacity Inches	Clamping Force Pounds	Approx. Weight Pounds	Case qty.
1800-S8	4 3/4	8	1980	4.00	5
1800-S12	4 3/4	12	1980	4.75	5
1800-S18	4 3/4	18	1980	5.75	5
1800-S24	4 3/4	24	1980	6.25	5

### Regular duty (2400S)



BESSEY® Product #	Throat Depth Inches	Clamping Capacity Inches	Clamping Force Pounds	Approx. Weight Pounds	Case qty.
2400S-8	5 1/2	8	2800	5.50	5
2400S-12	5 1/2	12	2800	6.80	5
2400S-16	5 1/2	16	2800	7.15	5
2400S-20	5 1/2	20	2800	7.50	5
2400S-24	5 1/2	24	2800	7.85	5
2400S-36	5 1/2	36	2800	10.75	5
2400S-48	5 1/2	48	2800	12.30	1
2400S-60	5 1/2	60	2800	14.25	1

# High-performance clamps



## Regular duty (2400S) with extra deep reach



BESSEY® Product #	Throat Depth	Clamping Capacity	Clamping Force	Approx. Weight	Case
	Inches	Inches	Pounds	Pounds	qty.
DT 2400-12	8	12	1770	7.50	1
DT 2400-24	8	24	1770	10.00	1

## Heavy duty (4800S)



BESSEY® Product #	Throat Depth	Clamping Capacity	Clamping Force	Approx. Weight	Case
	Inches	Inches	Pounds	Pounds	qty.
4800S-12	7	12	4880	12.00	1
4800S-18	7	18	4880	14.50	1
4800S-24	7	24	4880	16.00	1
4800S-36	7	36	4880	20.00	1
4800S-48	7	48	4880	22.00	1
4800S-60	7	60	4880	28.00	1

\* Comes standard with a 19 mm hex head spindle.

## Extra heavy duty (7200S)



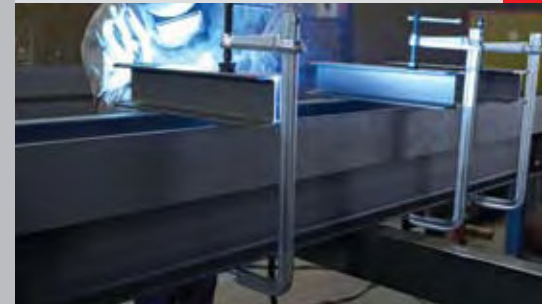
BESSEY® Product #	Throat Depth	Clamping Capacity	Clamping Force	Approx. Weight	Case
	Inches	Inches	Pounds	Pounds	qty.
7200S-12	8	12	7770	24.00	1
7200S-18	8	18	7770	28.00	1
7200S-36	8	36	7770	38.00	1

\* Comes standard with a 36 mm hex head spindle.

## Extra high pressure (8500HPC)



BESSEY® Product #	Throat Depth	Clamping Capacity	Clamping Force	Approx. Weight	Case
	Inches	Inches	Pounds	Pounds	qty.
8500HPC-6	4	6	8500	9.75	1
8500HPC-14	4	14	8500	11.00	1



- An extended throat depth of 8" comes standard
- MorPad tilts to 35°. Patented construction extends clamp life at full capacity.
- Ergonomic grip is standard equipment on 1800-S and 2400S series
- Forged sliding arm is made from tempered, drop-forged steel for long service life
- High-strength electro-galvanized sliding pin T-handle - rounded ends for comfort, size engineered to load capacity
- Heat treated, high carbon Acme threaded screw - tempered and quenched to give greater load capacity with longer service life. Spatter resistant.



# Multi-Purpose clamp KombiKlamp™

Your benefits at a glance:

## 1 Multi-angle pad

Robust Variable Angle Device (VAD) allows for a solid grip on odd shapes - also reverses for spreading. Jaws swivel  $\pm 60^\circ$ .

## 2 Removable end stop

The end stop can be removed – to allow the sliding arm to be quickly turned around for spreading.

## 3. Replaceable pressure plate

For enhanced serviceability, the pressure plate can be replaced quickly and easily without the need for special tools.

## 4. Tommy bar with ergonomic BESSEY® Grip

Ergonomic BESSEY® Grip offers greater comfort and slides with the T-handle.

## 5. Easily converts to a spreading device

Remove the end stop, reverse the cross arm, and reverse the VAD and this clamp becomes a very versatile spreading device.

## 6. Made in Germany

All components produced and assembled under rigid controls in BESSEY®'s German factory.



- Clamping and spreading of flat, round, oval and angled workpieces

- Pressure plates can easily be replaced without using any tools (see page 38)



## Multi-Purpose (KombiKlamp™)

BESSEY® Product #	Throat Depth Inches	Clamping Capacity Inches	Clamping Force Pounds	Approx. Weight Pounds	Case qty.
SG30VAD	4 3/4	*12	2600	6.00	6

\* 11 inch capacity with VAD in place.





# Bar clamps for welding and fabricating



**Your benefits at a glance:**

- 1 Enhanced clamp force and high stability**  
Patented rail profile offers more clamp force with fewer spindle turns.  
(For 660 & 1200)
- 2 Standard swivel pads**  
Standard pads are field replaceable.  
(For 660 & 1200)
- 3 Tempered spindle**  
Heat treated, high carbon Acme threaded screw – tempered and quenched to give greater load capacity and longer service life. Spatter resistant.
- 4 Sturdy Tommy bar**  
High-strength electro-galvanized sliding pin T-handle – rounded ends for comfort, size engineered to load capacity.
- 5 U-shaped sliding arm**  
New u-shaped sliding arm offers straight line power transmission. Great stability.  
(For 660 & 1200)

**Light duty (MMS)**



BESSEY® Product #	Throat Depth Inches	Clamping Capacity Inches	Clamping Force Pounds	Approx. Weight Pounds	Case qty.
MMS-4	2 1/4	4	400	0.55	10
MMS-8	2 1/4	8	400	0.70	6
MMS-12	2 1/4	12	400	0.80	10

**Light duty (660-S, 1200-S)**



BESSEY® Product #	Throat Depth Inches	Clamping Capacity Inches	Clamping Force Pounds	Approx. Weight Pounds	Case qty.
660-S8	4	8	726	1.85	10
660-S12	4	12	726	2.15	10
660-S18	4	18	726	2.75	10
1200-S8	4 3/4	8	1320	3.75	10
1200-S12	5 1/2	12	1320	4.25	10
1200-S18	4 3/4	18	1320	4.75	5
1200-S24	4 3/4	24	1320	5.25	5



■ Ergonomic grip is available as an accessory

# Shop floor clamps



- MorPad tilts to 35°. Patented construction extends clamp life at full capacity.
- Forged sliding arm is made from tempered, drop-forged steel for long service life
- High-strength electro-galvanized sliding pin t-handle - rounded ends for comfort, size engineered to load capacity
- Ergonomic grip is available as an accessory
- Heat treated, high carbon Acme threaded screw - tempered and quenched to give greater load capacity with longer service life. Spatter resistant.



- Spindle mechanism can be positioned outside working area for use in confined spaces
- A special V-grooved pressure plate is made of high grade cast iron... swivels up to 30°
- Removable end stop to allow the sliding arm to be quickly turned around for spreading (needs optional CLS Shoe)

## **NEW** Medium duty (SGL)

BESSEY® Product #	Throat Depth Inches	Clamping Capacity Inches	Clamping Force Pounds	Approx. Weight Pounds	Case qty.
SGL-8	4 3/4	8	1800	4.00	5
SGL-12	4 3/4	12	1800	4.75	5
SGL-18	4 3/4	18	1800	5.75	5
SGL-24	4 3/4	24	1800	6.25	5

## **NEW** Regular duty (SQ)

BESSEY® Product #	Throat Depth Inches	Clamping Capacity Inches	Clamping Force Pounds	Approx. Weight Pounds	Case qty.
SQ-4	4 3/4	6	1330	2.50	10
SQ-8	5 1/2	8	2660	5.50	5
SQ-12	5 1/2	12	2660	6.30	5
SQ-16	5 1/2	16	2660	7.00	5
SQ-20	5 1/2	20	2660	7.30	5
SQ-24	5 1/2	24	2660	8.00	5
SQ-36	5 1/2	36	2660	11.00	5
SQ-48	5 1/2	48	2660	14.00	1
SQ-60	5 1/2	60	2660	17.00	1

## **NEW** Heavy duty (STB)

BESSEY® Product #	Throat Depth Inches	Clamping Capacity Inches	Clamping Force Pounds	Approx. Weight Pounds	Case qty.
STB-12	7	12	4880	12.00	1
STB-18	7	18	4880	14.95	1
STB-24	7	24	4880	16.00	1
STB-36	7	36	4880	20.00	1

\* Comes standard with hex head spindle.

## Claw clamp (CL)

BESSEY® Product #	Throat Depth Inches	Clamping Capacity Inches	Clamping Force Pounds	Approx. Weight Pounds	Case qty.
CL-24	4	24	1775	7.15	5
CLS-Shoe				0.75	2

# Shop floor clamps



## Power clamp (TSC) with aluminum handle



BESSEY® Product #	Throat Depth Inches	Clamping Capacity Inches	Clamping Force Pounds	Approx. Weight Pounds	Case qty.
TSC4.516	4 1/2	16	1880	4.10	10



- Improves productivity over hand tightening manual clamps by using air tools or ratchets in high volume production shops to tighten clamps
- The BESSEY® power clamp is an all steel clamp made with heavy duty components to ensure a lifetime of use
- 15/16 hex nut allows the BESSEY® power clamp to be tightened and loosened with an air tool - the maximum torque value for air tool tightening is 15 lb/ft
- Safety stop collar ensures safety when tightening and loosening with an air/electric impact wrench
- Heat treated, high carbon Acme threaded screw - tempered and quenched to give greater load capacity with longer service life. Spatter resistant.

## OMEGA bend clamps (RSC)



BESSEY® Product #	Throat Depth Inches	Clamping Capacity Inches	Clamping Force Pounds	Approx. Weight Pounds	Case qty.
RSC-8	4	8	770	1.90	10
RSC-12	5 1/2	12	1100	4.15	10
RSC-18	4 3/4	18	1100	4.90	5
RSC-24	4 3/4	20	1100	5.40	5



- Patented OMEGA bend maintains positive pressure longer under heavy vibration
- Forged sliding arm is made from tempered, drop-forged steel for long service life
- High-strength electro-galvanized sliding pin t-handle - rounded ends for comfort, size engineered to load capacity
- Ergonomic grip is available as an accessory
- Heat treated, high carbon Acme threaded screw - tempered and quenched to give greater load capacity with longer service life. Spatter resistant.
- Standard pads are field replaceable



# classiX® International line of welding clamps

## Your benefits at a glance:

### 1 Global product platform

A common platform of high volume clamp styles, openings and pressure capabilities provides the impetus for high-volume production runs.

### 2 Quality control

Internationally sourced components coordinated by BESSEY® quality control and engineering departments ensure great prices and great quality.

### 3. Great value

Profiled rail, spatter resistant spindle and simplified heavy duty pad offer great value for industrial use.



■ BESSEY®'s international line of high-value clamps



## NEW classiX® - Standard pad



BESSEY® Product #	Throat Depth Inches	Clamping Capacity Inches	Clamping Force Pounds	Approx. Weight Pounds	Case qty.
GS12-8K	3 1/8	4	550	0.5	10
GS16K	3 1/8	6	550	0.6	10
GS20K	4	8	880	1.8	10
GS16-12K	4 3/4	6	1000	2.0	10
GS25K	4 3/4	10	1000	2.5	10
GS30K	5 1/2	12	1200	4.3	10
GS60K	4 3/4	24	1200	5.1	5

## NEW classiX® - Heavy duty pad



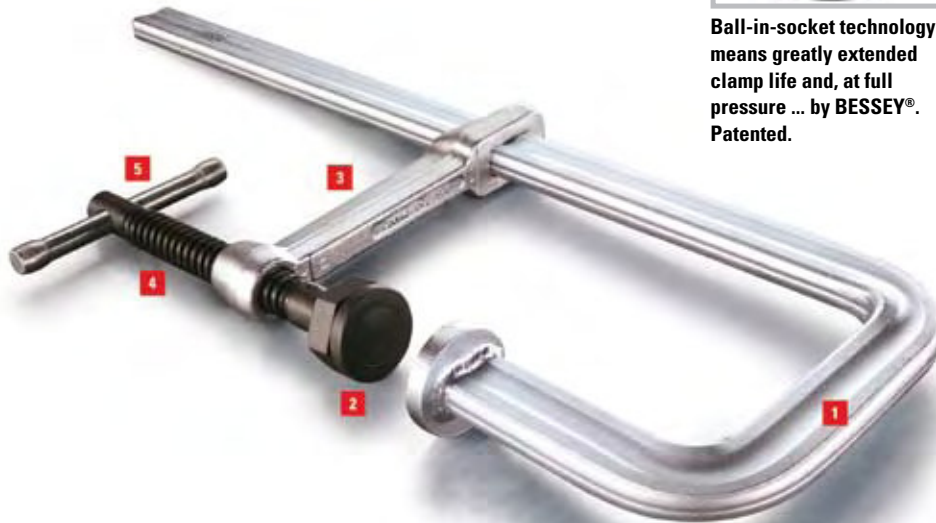
BESSEY® Product #	Throat Depth Inches	Clamping Capacity Inches	Clamping Force Pounds	Approx. Weight Pounds	Case qty.
GSL30	4 3/4	12	1880	5.0	5
GSL60	4 3/4	24	1880	6.5	5
GSM20	4 3/4	7 1/2	2660	5.2	5
GSM25	5 1/2	9	2660	6.0	5
GSM30	5 1/2	12	2660	7.0	5
GSM40	5 1/2	16	2660	7.5	5
GSM50	5 1/2	20	2660	7.7	5
GSM60	5 1/2	24	2660	8.0	5

# J Series clamps

## Step-Over steel clamps



Ball-in-socket technology means greatly extended clamp life and, at full pressure ... by BESSEY®. Patented.



### Your benefits at a glance:

- 1 Extremely sturdy**  
The return rail lets the J clamps "step-over" the lip on channel iron, angle-iron, I-beam or other obstructions.
- 2 BESSEY® MorPad**  
MorPad tilts to 35°. Patented construction extends clamp life at full capacity.
- 3. Forged sliding arm**  
Forged sliding arm is made from tempered, drop-forged steel for long service life.
- 4. Tempered spindle**  
Heat treated, high carbon Acme threaded screw - tempered and quenched to give greater load capacity with longer service life. Spatter resistant.
- 5. Sturdy Tommy bar**  
High-strength electro-galvanized sliding pin T-handle - rounded ends for comfort, size engineered to load capacity.



### Step-Over steel clamps

BESSEY® Product #	Throat Depth Inches	Clamping Capacity Inches	Clamping Force Pounds	Approx. Weight Pounds	Case qty.
<b>Light duty (J18) - Rail Step-Over up to 2 1/4"</b>					
J18-8	4 3/4	10	880	3.20	10
<b>Regular duty (SQJ) - Rail Step-Over up to 4"</b>					
SQJ-12	5 1/2	12	2660	7.85	5



### Step-Over steel clamps with MorPad

BESSEY® Product #	Throat Depth Inches	Clamping Capacity Inches	Clamping Force Pounds	Approx. Weight Pounds	Case qty.
<b>Regular duty (2400J) - Rail Step-Over up to 4"</b>					
2400J-12	5 1/2	12	2660	8.00	5
<b>Heavy duty (4800J) - Rail Step-Over up to 6"</b>					
4800J-20	7	20	4880	18.00	1



- Comes with standard swivel pad that is built for solid and dependable performance
- Ergonomic grip is available as an accessory on the SQJ
- MorPad tilts to 35°. Patented construction extends clamp life at full capacity.
- Ergonomic grip is standard equipment on 2400J series
- Hex head (19 mm) is standard on 4800J-20

# K-Body® REVO™ (Fixed jaw version)

## Powerful parallel clamping at its best

### Your benefits at a glance:

#### 1 Parallel clamping surface with jaw protection pads

These are arguably the most powerful and most parallel clamps in the world. The three large removable (if you want to clean or replace them) pressure caps are resistant to glue, paint and solvents.

#### 2 Large 2K composite handle

High quality 2K composite handle with soft plastic insert for comfort while working.

#### 3 Rail protection pieces

The rail protection pieces (made from impact resistant polyamide) prevent glue dripping on to the rail. With TK-6 table (see page 23) clamps you can easily fasten the rail protection pieces to a work surface.

#### 4 Removable end-clip

End-clip ensures clamp sits parallel to work surface and is removable to reverse sliding arm for use as spreader.



- Jaws clamp at accurate 90 degree angles
- Everyday clamp force of 1500 lbs
- Large handles and clamping surface
- Replacement parts for all components



### K Body® REVO™, parallel clamps

BESSEY Product #	Throat Depth	Clamping Capacity	Clamping Force	Approx. Weight	Case
	Inches	Inches	Pounds	Pounds	qty.
KR3.512	3 3/4	12	1500	4.50	2
KR3.524	3 3/4	24	1500	5.50	2
KR3.531	3 3/4	31	1500	6.50	2
KR3.540	3 3/4	40	1500	7.30	2
KR3.550	3 3/4	50	1500	8.00	2
KR3.560	3 3/4	60	1500	9.30	2
KR3.582	3 3/4	82	1500	11.50	2
KR3.598	3 3/4	98	1500	13.50	2





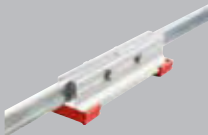
# Parallel clamps

## K Body® REVO™ accessory, KR-AS jaw adapter



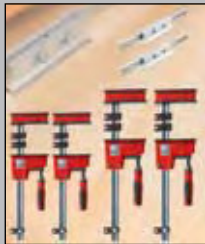
BESSEY Product #	Suitable for	Width	Length	Case
		Inches	Inches	qty.
KR-AS	K Body® REVO™ (KR and KRV)	1.0	7.0	12

## K Body® REVO™ accessory, KBX20 Extender



BESSEY® Product #	Includes	Approx. Weight	Case
		Pounds	qty.
KBX20	Extender, bolts, nuts and washers	1.6	12

## K Body® REVO™ Extender kit



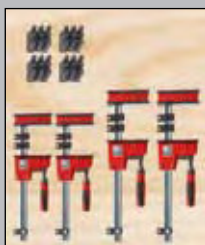
BESSEY® Product #	Includes	Approx. Weight
		Pounds
KRX2440	2 x KR3.524 (24" K Body® REVO™ clamps) 2 x KR3.540 (40" K Body® REVO™ clamps) 2 x K Body® Extenders	28.00
KRX2450	2 x KR3.524 (24" K Body® REVO™ clamps) 2 x KR3.550 (50" K Body® REVO™ clamps) 2 x K Body® Extenders	29.00

## K Body® REVO™ accessory, KP Blocks



BESSEY® Product #	Includes	Approx. Weight	Case
		Pounds	qty.
KP	(4 per set)	1.10	4 pack
KP Block adaptor	(4 per set)	0.50	4 pack

## K Body® REVO™ framing kit



BESSEY® Product #	Includes	Approx. Weight
		Pounds
KRK2440	2 x KR3.524 (24" K Body® REVO™ clamps) 2 x KR3.540 (40" K Body® REVO™ clamps) 1 set of KP BLOCKS (4 blocks per set)	26.00
KRK2450	2 x KR3.524 (24" K Body® REVO™ clamps) 2 x KR3.550 (50" K Body® REVO™ clamps) 1 set of KP Blocks (4 blocks per set)	27.00



- This accessory effortlessly slides onto the jaws of the K Body® REVO™ to create clamping optimized for irregular shapes
- Pivoting jaws will clamp or spread irregular angles from -15° to +15°

- Connects two K Body® REVO™ clamps (or K Body® classic style) for extended reach
- K Body® Extender suitable for the K Body® REVO™ (KR and KRV)
- Durable aluminum construction for rigid accurate linkage

- Set of 4 K Body® REVO™ and 2 x KBX20 Extender
- KRX2440 (2 x 24", 2 x 40", 2 x KBX20)
- KRX2450 (2 x 24", 2 x 50", 2 x KBX20)

- Quick accurate set up of raised panel doors, frames, boxes etc
- KP Blocks made especially for the K Body® REVO™ (KR and KRV)



- Set of 4 K Body and 1 x KP Block Set
- KRK2440 (2 x 24" 2 x 40", 1 x KP Blocks)
- KRK2450 (2 x 24", 2 x 50", 1 x KP Blocks)

# Vario K Body® REVO™ (Variable jaw version)

## Powerful parallel clamping at its best

### Your benefits at a glance:

#### 1 Parallel clamping surface with jaw protection pads

These are arguably the most powerful and most parallel clamps in the world. The three large removable (if you want to clean or replace them) pressure caps are resistant to glue, paint and solvents.

#### 2 The Moveable 'Fixed' Jaw

For the first time ever, BESSEY® offers the opportunity to adjust both jaws to optimize clamping set-up. With the push of a button the 'fixed' jaw can be moved to where you want it.

#### 3 Large 2K composite handle

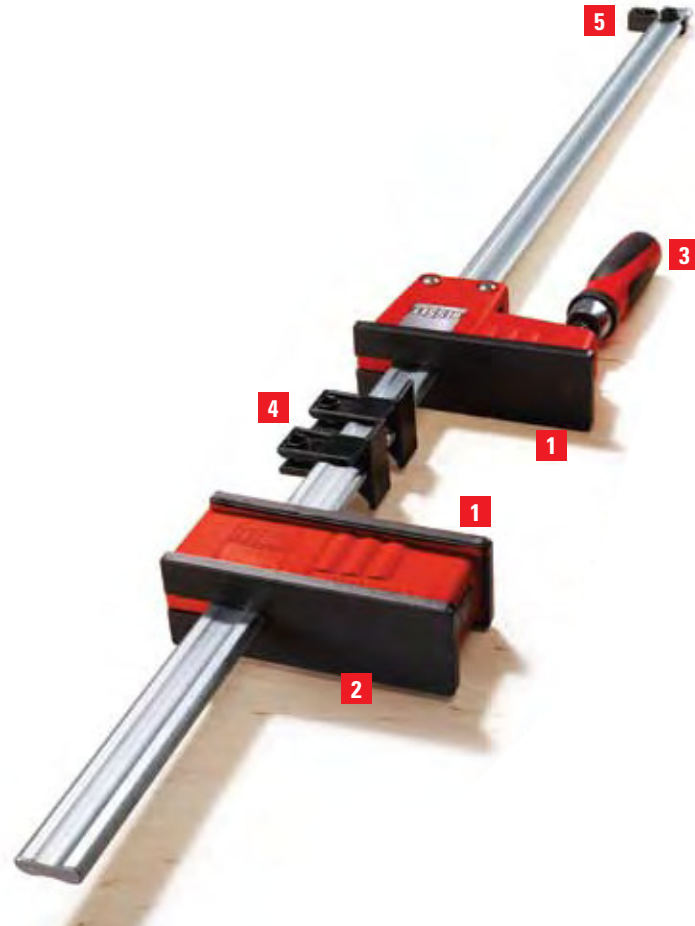
High quality 2K composite handle with soft plastic insert for comfort while working.

#### 4 Rail protection pieces

The rail protection pieces (made from impact resistant polyamide) prevent glue dripping on to the rail. With TK-6 table (see page 23) clamps you can easily fasten the rail protection pieces to a work surface.

#### 5 Removable end-clip

End-clip ensures clamp sits parallel to work surface and is removable to reverse sliding arm for use as spreader.



- With the push of a button, adjust bottom jaw for balance and position to optimize clamping preparation
- Jaws clamp at accurate 90 degree angles
- Everyday clamp force of 1500 lbs
- Large handles and clamping surface
- Replacement parts for all components



### Vario K Body® REVO™, variable jaw parallel clamp

BESSEY Product #	Throat Depth Inches	Clamping Capacity Inches	Clamping Force Pounds	Approx. Weight Pounds	Case qty.
KRV-40	3 3/4	40	1500	8.55	2
KRV-60	3 3/4	60	1500	9.44	2
KRV-78	3 3/4	78	1500	12.22	2
KRV-98	3 3/4	98	1500	14.00	2

# K Body® REVO™ accessories



## K Body® REVO™ accessory, KR-VO variable jaw



BESSEY® Product #	Suitable for	Throat Depth	Approx. Weight	Case
		Inches	Pounds	qty.
KR-VO	K Body® REVO™ (KRV)	3 3/4	2	1

## K Body® REVO™ accessory, KR-J2K sliding jaw



BESSEY® Product #	Suitable for	Throat Depth	Approx. Weight	Case
		Inches	Pounds	qty.
KR-J2K	K Body® REVO™ (KRV)	3 3/4	2	1

## K Body® REVO™ accessory, KR-JP jaw pads



BESSEY® Product #	Includes	Approx. Weight	Case
		Pounds	qty.
KR-JP	2 jaw pads per set	1	12

## K Body® REVO™ accessory, KR-EC end clips



BESSEY® Product #	Includes	Approx. Weight	Case
		Pounds	qty.
KR-EC	1 rail end clip per set	1	24

## K Body® REVO™ accessory, KR-RPP rail protection pieces



BESSEY® Product #	Includes	Approx. Weight	Case
		Pounds	qty.
KR-RPP	2 rail protection pieces per set	1	24

## K Body® REVO™ accessory, 2K handle



BESSEY® Product #	Includes	Approx. Weight	Case
		Pounds	qty.
3101370	1-2K handle, Formerly "H/S-REVO2K"	0.6	1

## K Body® REVO™ accessory, wood handle



BESSEY® Product #	Includes	Approx. Weight	Case
		Pounds	qty.
3101371	1 wood handle, Formerly "H/S-REVOW"	0.5	1

## K Body® REVO™ accessory, KBTP-4 end-clips (classic style)



BESSEY Product #	Includes	Approx. Weight	Case
		Pounds	qty.
KBTP-4	4 end-clips per set	2	4 pack

- Replacement variable jaw as a single unit suitable for the K Body® REVO™ (KRV)
- Can be added to any K Body® REVO™ to create multiple glue ups or make a custom clamp

- Replacement sliding jaw as a single unit suitable for the K Body® REVO™ (KR and KRV)
- Can be added to any K Body® REVO™ to create multiple glue ups or make a custom clamp

- Replacement jaw pads suitable for the K Body® REVO™ (KR and KRV)
- Jaw pads are resistant to glue, paint and grease solvents

- Replacement rail end clips suitable for the K Body® REVO™ (KR and KRV)

- Replacement rail protection pieces suitable for the K Body® REVO™ (KR and KRV)
- Elevates work piece from the rail

- Replacement 2K handle suitable for the K Body® REVO™ (KR and KRV)

- Replacement wood handle suitable for the K Body® REVO™ (KR and KRV)

- Replacement end-clips suitable for K Body® clamps produced before July, 2008
- End-clips ensure clamp sits parallel to work surface

\* Only for clamps produced before July 1<sup>st</sup>, 2008.



Malleable cast bar clamps

# BESSEY® quality, durability and strength



**Integrated anti-slip system.**  
The harder one clamps, the tighter the grip.

The original BESSEY® malleable cast iron bar clamp is available in two different designs. Either with the tried-and-true wooden handle, or with the modern BESSEY® 2K handle. The 2K handle allows you to complete tasks more effectively and with less hand fatigue. This is possible thanks to the high quality 2K composite handle with a comfort insert.

## Your benefits at a glance:

### 1 Integrated anti-slip system

Maximum safety is available with the integrated anti-slip system. A set screw that is molded into the sliding arm interlocks with the serration on the rail to prevent the clamp from slipping.

### 2 Reinforced malleable cast iron jaw and sliding arm

Corrugated malleable cast iron fixed jaw and sliding arm generate powerful, rigid clamping. Top jaw is press fitted to the rail. No mechanical fasteners to loosen. Powder coating protects against corrosion.

### 3 High quality profiled rail

The BESSEY® profiled rail from our own German steel plant has been optimized for clamps. The profile acts as a reliable reinforcement against torsional forces, while the serration on six faces additionally prevents the clamp from slipping.

### 4 BESSEY® smooth running spindle

The smooth running spindle with Acme thread allows for more clamping with less effort. Replaceable pressure plates can be easily changed without tools.

### 5 BESSEY® comfort

With the TG series you have the choice of the tried-and-true wooden handle or the 2K composite handle with a comfort insert. Replaceable pressure pads come standard with 2K handle.



# Malleable cast bar clamps



## Light duty (TGK) with 2K handle



BESSEY® Product #	Throat Depth	Clamping Capacity	Clamping Force	Approx. Weight	Case
	Inches	Inches	Pounds	Pounds	qty.
TGJ2.506+2K	2 1/2	6	600	1.50	5
TGJ2.512+2K	2 1/2	12	600	2.00	5
TGJ2.518+2K	2 1/2	18	600	2.30	5
TGJ2.524+2K	2 1/2	24	600	2.50	5
TGJ2.530+2K	2 1/2	30	600	3.00	5
TGJ2.536+2K	2 1/2	36	600	3.50	5
TG4.008+2K	4	8	880	2.50	10
TG4.012+2K	4	12	880	2.80	10
TG4.016+2K	4	16	880	3.00	10
TG4.024+2K	4	24	880	3.50	10



- 2K composite handle with comfort insert
- Profiled rail is extremely rigid
- Standard pads are field replaceable
- Malleable cast jaws feature corrugated design for strength and durability

## Light duty (TG & TGJ) with wood handle



BESSEY® Product #	Throat Depth	Clamping Capacity	Clamping Force	Approx. Weight	Case
	Inches	Inches	Pounds	Pounds	qty.
TGJ2.506	2 1/2	6	600	1.50	5
TGJ2.512	2 1/2	12	600	2.00	5
TGJ2.518	2 1/2	18	600	2.30	5
TGJ2.524	2 1/2	24	600	2.50	5
TGJ2.530	2 1/2	30	600	3.00	5
TGJ2.536	2 1/2	36	600	3.50	5
TG4.008	4	8	880	2.50	10
TG4.012	4	12	880	2.80	3
TG4.016	4	16	880	3.00	10
TG4.024	4	24	880	3.50	3



- Ergonomically shaped wood handle
- Profiled rail is extremely rigid
- Standard pads are field replaceable
- Malleable cast jaws feature corrugated design for strength and durability

## Medium duty (TG & TGJ) with 2K handle



BESSEY® Product #	Throat Depth	Clamping Capacity	Clamping Force	Approx. Weight	Case
	Inches	Inches	Pounds	Pounds	qty.
TG4.512+2K	4 1/2	12	1000	3.30	10
TG4.518+2K	4 1/2	18	1000	4.05	10
TG4.524+2K	4 1/2	24	1000	4.80	5
TG4.530+2K	4 1/2	30	1000	5.55	5
TG4.540+2K	4 1/2	40	1000	6.30	5
TG5.512+2K	5 1/2	12	1320	5.00	10
TG5.518+2K	5 1/2	18	1320	5.65	5
TG5.524+2K	5 1/2	24	1320	6.30	5
TG7.016+2K	7	16	1320	6.00	5
TG7.024+2K	7	24	1320	7.00	1
TG7.048+2K	7	48	1320	10.00	1

- 2K composite handle with comfort insert
- Profiled rail is extremely rigid
- Standard pads are field replaceable
- Malleable cast jaws feature corrugated design for strength and durability

# Malleable cast bar clamps



- Ergonomically shaped wood handle
- Profiled rail is extremely rigid
- Standard pads are field replaceable
- Malleable cast jaws feature corrugated design for strength and durability
- 2K composite handle with comfort insert

- Ergonomically shaped wood handle

- Up to 20" throat depth available
- Tommy bar with rounded ends for simple transfer of force when clamping
- Large, stable solid flat rail with serration



- Ergonomically shaped wood handle
- Stable, solid flat rail with serration
- Flat rails are an economical alternative - German quality at an appealing price for industrial applications



## Medium duty (TG) with wood handle

BESSEY® Product #	Throat Depth	Clamping Capacity	Clamping Force	Approx. Weight	Case
	Inches	Inches	Pounds	Pounds	qty.
TG4.512	4 1/2	12	1000	3.30	10
TG4.518	4 1/2	18	1000	4.05	10
TG4.524	4 1/2	24	1000	4.80	5
TG4.530	4 1/2	30	1000	5.55	5
TG4.540	4 1/2	40	1000	6.30	3
TG5.512	5 1/2	12	1320	5.00	10
TG5.518	5 1/2	18	1320	5.65	5
TG5.524	5 1/2	24	1320	6.30	5
TG7.016	7	16	1320	6.00	5
TG7.024	7	24	1320	7.00	1
TG7.048	7	48	1320	10.00	1

## Heavy duty (TGK) with 2K handle

BESSEY® Product #	Throat Depth	Clamping Capacity	Clamping Force	Approx. Weight	Case
	Inches	Inches	Pounds	Pounds	qty.
TGK4.516+2K	4 1/2	16	1540	6.00	5
TGK4.524+2K	4 1/2	24	1540	7.00	5
TGK4.540+2K	4 1/2	40	1540	9.00	5
TGK4.550+2K	4 1/2	50	1540	10.50	1
TGK4.579+2K	4 1/2	79	1540	14.50	1

## Heavy duty (TGK) with wood handle

BESSEY® Product #	Throat Depth	Clamping Capacity	Clamping Force	Approx. Weight	Case
	Inches	Inches	Pounds	Pounds	qty.
TGK4.516	4 1/2	16	1540	6.00	5
TGK4.524	4 1/2	24	1540	7.00	5
TGK4.540	4 1/2	40	1540	9.00	5
TGK4.550	4 1/2	50	1540	10.50	1
TGK4.579	4 1/2	79	1540	14.50	1

## Deep reach (CDS)

BESSEY® Product #	Throat Depth	Clamping Capacity	Clamping Force	Approx. Weight	Case
	Inches	Inches	Pounds	Pounds	qty.
CDS24-10 WP	10	24	1550	12.50	1
CDS24-12 WP	12	24	1550	14.50	1
CDS24-20 WP	20	24	990	20.50	1

## Light duty (TC)

BESSEY® Product #	Throat Depth	Clamping Capacity	Clamping Force	Approx. Weight	Case
	Inches	Inches	Pounds	Pounds	qty.
TC4.008	4	8	800	2.85	10

## Medium duty (TC)

BESSEY® Product #	Throat Depth	Clamping Capacity	Clamping Force	Approx. Weight	Case
	Inches	Inches	Pounds	Pounds	qty.
TC4.512	4 1/2	12	950	3.36	10
TC5.512	5 1/2	12	1200	5.25	5
TC7.016	7	16	1200	6.25	5



# Malleable cast bar clamps



## **NEW** Large TG clamp set (16 pc with display)



BESSEY® Product #	Kit includes	Approx. Weight Pounds
BTBTG5	4 x TG4.008 (8" malleable cast bar clamp) 4 x TG5.512 (12" malleable cast bar clamp) 4 x TG7.016 (16" malleable cast bar clamp) 2 x TGK4.524 (24" malleable cast bar clamp) 2 x TGK4.540 (40" malleable cast bar clamp) 1 x A Frame Display (Sturdy, mobile display)	96.00

## **NEW** Clutch clamp kit (24 pc)



BESSEY® Product #	Kit includes	Approx. Weight Pounds
BTBSV24	8 x GSCC2.506 (6" clutch style clamp) 4 x GSCC2.512 (12" clutch style clamp) 2 x GSCC3.512 (12" clutch style clamp) 4 x GSCC3.518 (18" clutch style clamp) 2 x GSCC5.018 (18" clutch style clamp) 4 x GSCC5.024 (24" clutch style clamp) 1 x A Frame Display (Sturdy, mobile display)	42.00

## General clamp kit (10 pc)



BESSEY® Product #	Kit Includes	Approx. Weight Pounds
BGP	2 x TGJ2.506 (6" malleable cast bar clamp) 2 x TG4.008 (8" malleable cast bar clamp) 2 x LM2.004 (4" zinc die cast bar clamp) 2 x PC34 (3/4" pipe clamp) 2 x XM5 (2" metal spring clamp)	17.00

## Small TG Kit (30 pc)



BESSEY® Product #	Kit Includes	Approx. Weight Pounds
BTB30	4 x TGJ2.506 (6" malleable cast bar clamp) 6 x TGJ2.512 (12" malleable cast bar clamp) 4 x TGJ2.518 (18" malleable cast bar clamp) 8 x TGJ2.524 (24" malleable cast bar clamp) 4 x TGJ2.530 (30" malleable cast bar clamp) 4 x TGJ2.536 (36" malleable cast bar clamp)	38.00

## Small TG Kit (30 pc with display)



BESSEY® Product #	Kit Includes	Approx. Weight Pounds
BTB30A	4 x TGJ2.506 (6" malleable cast bar clamp) 6 x TGJ2.512 (12" malleable cast bar clamp) 4 x TGJ2.518 (18" malleable cast bar clamp) 8 x TGJ2.524 (24" malleable cast bar clamp) 4 x TGJ2.530 (30" malleable cast bar clamp) 4 x TGJ2.536 (36" malleable cast bar clamp) 1 x A Frame Display (Sturdy, mobile display)	65.00

- Top selling larger format malleable cast clamps plus an A-frame display

- Top selling clutch style clamps plus an A-frame display

- A selection of top selling multi purpose clamps

- A selection of top selling smaller malleable cast clamps

- Top selling smaller malleable cast clamps plus an A-frame display

See page 38 & 39 for spare parts and accessory availability.

## Lever clamps

# Rapid-Action, lever clamps

### Your benefits at a glance

#### 1 Secure ratchet mechanism

The ratchet mechanism ensures rapid, vibration-resistant clamping. Hardened cam at the end of the lever ensures a long service life.

#### 2 Extremely sturdy

Torsion-resistant, fixed bracket and pressure plate are produced and tempered in one piece for maximum tensile strength and sturdiness.

#### 3 Forged sliding arm

Forged sliding-arm is made from tempered, drop-forged steel for long service life.

#### 4 Extremely sturdy handle

Ergonomically shaped powder-coated clamping lever and plastic-coated release for comfort and power.

#### 5 Trigger protection

Trigger protection means fewer pinched fingers.



- Large tilting pressure plate
- New u-shaped sliding arm offers straight line power transmission. Great stability.
- Sturdy fixed and sliding arms made from lightweight magnesium
- Vibration resistant ratchet mechanism
- Ergonomically shaped clamping lever



- Ideal for light touch clamping or delicate tasks such as antique restoration, veneering and making or repairing musical instruments
- Upper and lower arms and lever made from high quality hardwood
- Cork protective pads for gentle clamping



### Lever clamps

BESSEY® Product #	Throat Depth	Clamping Capacity	Clamping Force	Approx. Weight	Case
	Inches	Inches	Pounds	Pounds	qty.
LC-4	2 3/8	4	400	1.10	10
LC-8	4	8	660	2.50	10
LC-12	5 1/2	12	1200	5.00	10
LC-20	4 3/4	20	1200	5.75	5
1800L-12	5 1/2	10	1800	7.00	5

### KliKlamp®, light duty lever clamp

BESSEY® Product #	Throat Depth	Clamping Capacity	Clamping Force	Approx. Weight	Case
	Inches	Inches	Pounds	Pounds	qty.
KLI3.004	3	4	260	0.70	10
KLI3.008	3	8	260	0.80	10
KLI3.012	3	12	260	1.00	10

### Wood Klemmy clamps

BESSEY® Product #	Throat Depth	Clamping Capacity	Approx. Weight	Case
	Inches	Inches	Pounds	qty.
KLW4.012	4	12	1.00	10
KLW4.024	4	24	1.50	10

# One handed, light duty & clutch style clamps

## One-handed clamping or spreading



### Your benefits at a glance

- 1 Powerful technology**  
The extremely sophisticated technology makes it possible - single-handed clamping and spreading of workpieces with up to 445 lb clamping force.
- 2 Intelligent release button**  
Thanks to the intelligent release mechanism, the upper section can be quickly converted from clamping to spreading – without the need for tools or releasing screws.
- 3 Handle behind the rail**  
The ergonomically shaped 2-component plastic handle with pump level is positioned behind the rail, enabling a powerful grip.
- 4 Soft pressure caps**  
Soft pressure caps optimize material protection and secure clamping.
- 5 Internal components that ...**  
Reflect German engineering ... heavy duty for sure!

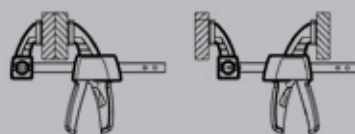


### NEW EZS Clamps

BESSEY® Product #	Throat Depth Inches	Clamping Capacity Inches	Clamping Force Pounds	Approx. Weight Pounds	Case qty.
EZS15-8	3 1/2	6	445	1.2	6
EZS30-8	3 1/2	12	445	1.8	6
EZS45-8	3 1/2	18	445	2.0	6
EZS60-8	3 1/2	24	445	2.3	6
EZS90-8	3 1/2	36	445	2.5	6

### NEW EZS Combo

BESSEY® Product #	Kit Includes	Approx. Weight Pounds
EZS Combo	2 x EZS15-8 2 x EZS30-8 2 x EZS45-8	11.00



- Clamping force up to 445 lb
- No tools required for conversion to spreading
- Available in sizes 6" to 36"





# One handed, light duty & clutch style clamps



- Small and very handy
- Light weight
- Comes with two plastic pressure caps
- Helps to clamp in hard to reach spots



- Zinc die cast jaws are light weight
- Serrated rail for slip resistant grip
- Non-marring plastic caps on pressure pad

- Powder coated, ductile cast iron jaws
- 2 piece slip clutch plates
- Nickel plated, drawn serrated rail
- Non-marring pads on the top and bottom jaws
- Ergonomically shaped wood handle

- Powder coated, ductile cast iron jaws
- 2 piece slip clutch plates
- Nickel plated, drawn serrated rail
- Non-marring pads on the top and bottom jaws



## Light duty, zinc die cast, step over (LMU)

BESSEY Product #	Throat Depth	Clamping Capacity	Clamping Force	Approx. Weight	Case
	Inches	Inches	Pounds	Pounds	qty.
LMU2.004*	2	4	330	0.55	24
LMU2.006*	2	6	330	0.62	24
LMU2.008*	2	8	330	0.68	24

\* Comes packed in a retail ready full colour shelf display - must order case qty to get shelf display.



## Light duty, zinc die cast (LM)

BESSEY Product #	Throat Depth	Clamping Capacity	Clamping Force	Approx. Weight	Case
	Inches	Inches	Pounds	Pounds	qty.
LM2.004*	2	4	330	0.55	36
LM2.006	2	6	330	0.62	10
LM2.008	2	8	330	0.68	10
LM2.012	2	12	330	0.81	10
LM3.006	3	6	330	1.19	10
LM3.012	3	12	330	1.40	10
LM3.024	3	24	330	2.50	10
LM3.036	3	36	330	3.00	10
LM4.008	4	8	440	2.00	10
LM4.012	4	12	440	2.50	10
LM4.016	4	16	440	2.70	10
LM4.024	4	24	440	3.00	10

## Clutch style (GSCC)

BESSEY Product #	Throat Depth	Clamping Capacity	Load Limit	Approx. Weight	Case
	Inches	Inches	Pounds	Pounds	qty.
GSCC2.506	2 1/2	6	600	0.66	6
GSCC2.512	2 1/2	12	600	0.77	6
GSCC2.518	2 1/2	18	600	0.92	6
GSCC2.524	2 1/2	24	600	1.00	6
GSCC2.530	2 1/2	30	600	1.20	6
GSCC2.536	2 1/2	36	600	1.33	6
GSCC3.512	3 1/2	12	1000	1.25	6
GSCC3.518	3 1/2	18	1000	1.38	6
GSCC3.524	3 1/2	24	1000	1.55	6
GSCC5.012	5	12	1200	2.08	6
GSCC5.018	5	18	1200	2.25	6
GSCC5.024	5	24	1200	2.50	6



## Clutch style (DHBC) with double jaw

BESSEY Product #	Throat Depth	Clamping Capacity	Load Limit	Approx. Weight	Case
	Inches	Inches	Pounds	Pounds	qty.
DHBC-12	3 1/2	12	400	2.20	4
DHBC-24	3 1/2	24	400	2.80	4
DHBC-36	3 1/2	36	400	3.40	4



# One handed, light duty & clutch style clamps



## PowerGrip (PG) heavy duty one-hand clamp



BESSEY® Product #	Throat Depth	Clamping Capacity	Clamping Force	Approx. Weight	Case
	Inches	Inches	Pounds	Pounds	qty.
PG12	4	12	1000	2.40	5
PG24	4	24	1000	3.50	5



- Easy slide button for positioning
- Pump handle to clamp with 100-200 lbs pressure
- Handle/Spindle combo, for heavy tightening

## DuoKlamp®, large surface one handed clamp



BESSEY® Product #	Throat Depth	Clamping Capacity	Clamping Force	Approx. Weight	Case
	Inches	Inches	Pounds	Pounds	qty.
DU016-6	2 1/2	6	180	0.60	6
DU030-6	2 1/2	12	180	0.84	6
DU016-8	3 1/4	6	260	1.13	6
DU030-8	3 1/4	12	260	1.35	6
DU045-8	3 1/4	18	260	1.60	6
DU065-8	3 1/4	24	260	1.91	6



- Change from clamping to spreading by simply twisting the dial - no disassembling
- Handle with pump lever parallel to the rail
- Convenient one-handed operation
- All around clamping - in front of, behind and at the side of the rail

## **NEW** DuoKlamp® Combo

BESSEY® Product #	Kit Includes	Approx. Weight
		Pounds
DuoKlamp® Combo	2 x DU016-6 2 x DU030-8 2 x DU045-8	7.60

## **NEW** DuoKlamp® accessory, DKX DuoKlamp® Extender



BESSEY® Product #	Opening Capacity	Spreading Capacity	Pressure Capacity	Approx. Weight	Case
	Inches	Inches	Pounds	Pounds	qty.
DKX	6 - 65	7.5 - 70	260	3.5	1

\* Does not include DuoKlamp®. Sold Separately.



- Used with a DuoKlamp® (and most similar sized clamps) one can spread up to 65"
- Also can be used to spread up to 70"
- DuoKlamp® fits snugly into Extender clamp, no tools required

# Welding angle clamps

## Clamping angles and miters

### Your benefits at a glance:

#### 1. Right angle clamping

The angle clamp has been developed for a wide range of applications, holding, fixing, and aligning material at an exact right angle.

#### 2. Workpieces of different thicknesses

The angle clamp is designed for holding workpieces of different thicknesses at a precise 90° angle.

#### 3. Copper spindle

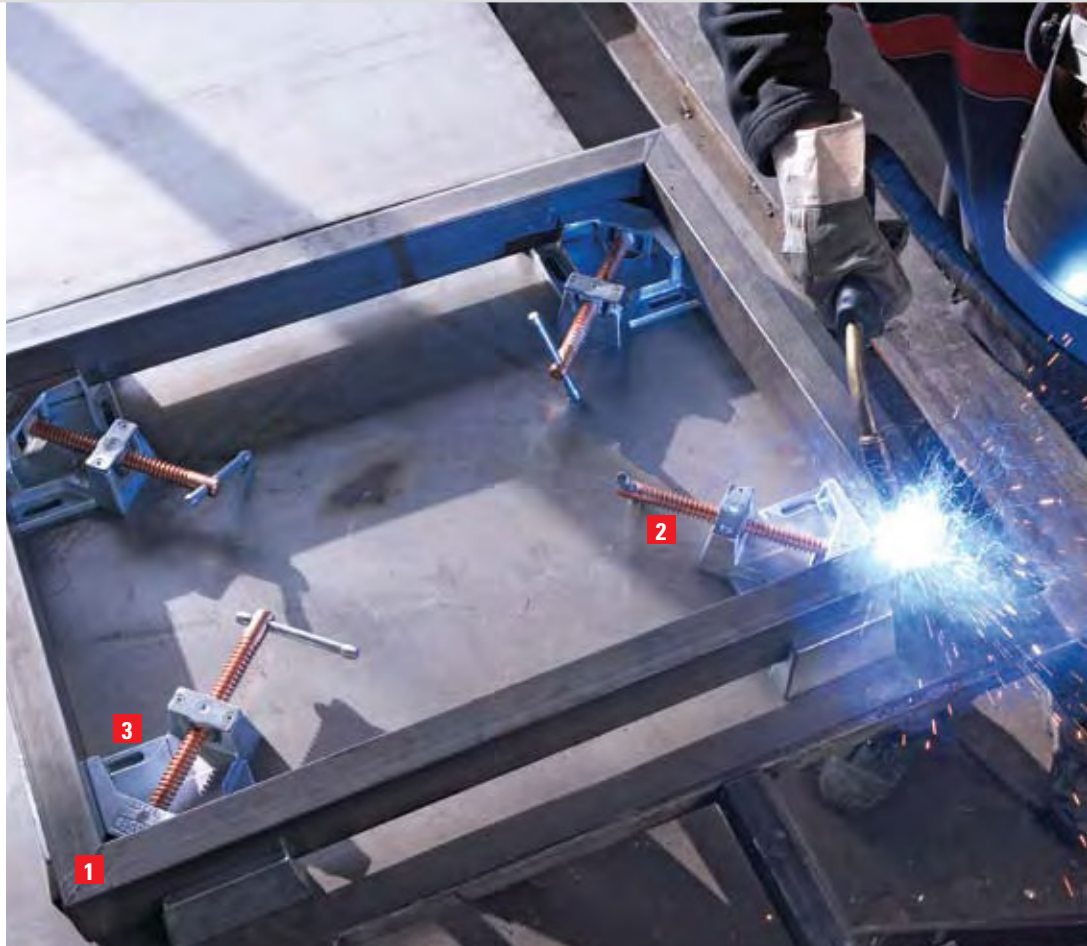
Copper spindle to resist spatter.

#### 4. Sturdy frame

Sturdy jaws and base made from high grade cast iron.

#### 5. Clear working area

Access to the workpiece is unhindered during welding and assembly work and when fixing T-joints.



- Automatic adjustment to work pieces of different thicknesses
- Precise 90° angles

- Clamping aid for clamping components of different thicknesses at any chosen angle
- Angle range: 5° to 180°
- Individual clamps pivot on a fixture to produce an incredible range of angles



### Angle clamps (WSM)

BESSEY® Product #	Jaw Height Inches	Capacity for both sides Inches	Max. Passage for Mitres Inches	Approx. Weight Pounds	Case qty.
WSM-9	1 3/8	7	3 1/2	8.10	1
WSM-12	2 3/8	9 1/2	4 3/4	16.55	1



### Multi-angle vise set (WVS)

BESSEY® Product #	Clamping Capacity Inches	Jaw Height Inches	Range of Angle Degrees	Approx. Weight Pounds	Case qty.
WVS-4	4 3/8	1 3/8	5° to 180°	23.00	1



# Strap clamps



## Your benefits at a glance:

- 1 Band is drawn in on both sides**  
Strap draws simultaneously from both sides ensuring pressure is applied equally on all corners without distortion.
- 2 Integrated coiling mechanisms**  
Integrated rewind mechanism operates by a cranking handle which eliminates tangling and damage to the band.
- 3 Practical Vario corners**  
Vario clip corners with twin-tilting pressure pads auto-adjust from 60° to 180° for easy assembly of any multi-angle project.
- 4 Extremely tearproof**  
The special woven polyester band guarantees a high resistance to tearing, and a clamping range of 7 m. The steel wire loop opens quickly and simply to adjust or release glue-up.

### Variable angle (VAS)



BESSEY® Product #	Clamping Capacity	Range of Angle Degrees	Approx. Weight Pounds	Case qty.
VAS-23	Up to 23 feet	60° to 180°	1.40	3



- Even pressure on mitre joints
- High quality strap clamp
- Comes with 4 pivoting Vario corners

### Vario corner clips (VAC)



BESSEY® Product #	Package includes	Range of Angle Degrees	Approx. Weight Pounds	Case qty.
VAC-6	6 corner clips per package	60° to 180°	0.26	5 pkg/ case

- Vario corner clips have twin-tilting pressure pads that auto adjust from 60° to 180°

### Ratchet tie-down, base (BAN)



BESSEY® Product #	Strap Length Feet	Strap Width Inches	Clamping Force Pounds	Approx. Weight Pounds	Case qty.
BANR400	13	0.95	up to 400	0.75	6

- For clamping awkward and irregular shape objects

# Angle & miter clamp

## Your benefits at a glance:

### 1 Sturdy frame

Die-cast jaws plastic coated to protect work.

### 2 Versatility

Designed for clearance of dowels, screws or staples while gluing.

### 3. Right angle clamping

Holds and aligns material at 90° angle.

### 4. Wood handle

Ergonomically shaped wood handle.

### 5. Adjustable

Adjust automatically to wood thickness.

**A.** Note: TK-6 Table mount clamp in picture is sold separately.



- Holds and aligns material at a 90° angle
- Adjusts automatically to wood thickness
- Galvanized spindle, Acme thread
- Die cast jaw - plastic coated to protect work

- Holds BESSEY® WS-3, WS-6, S-10, S-15, and K-Body® REVO™ to work surface (see picture above)



## Angle clamps (WS)

BESSEY® Product #	Maximum Clamping Capacity	Max. Passage for joints	Approx. Weight	Case
	Inches	Inches	Pounds	qty.
WS-3	Both sides-max 4" thick	1 1/8	2.40	3
WS-6	Both sides-max 8" thick	2 7/16	5.25	4

\* Packaged in a retail ready clamshell package.



## Table mount clamp (TK)

BESSEY® Product #	Works with...	Approx. Weight	Case
		Pounds	qty.
TK-6	Fits WS-3, WS-6, S-10, S-15, and K-Body® REVO™ accessories	0.45	1

# Angle & miter clamps

## Corner clamp (WS)



BESSEY® Product #	Clamping Capacity	Angle	Approx. Weight	Case
		Degrees	Pounds	qty.
WS-1	Up to 3" per side	90°	0.50	10

Mounted on retail-ready backer card.



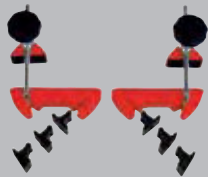
- Economical alternative for fixed 90° angle for miter or butt joints
- Mounting holes to fix to work surface
- Adjusts to various sized work pieces with 2 spindles
- For light duty clamping



## Miter clamp fixture (GS)

BESSEY® Product #	Clamping Capacity	Range of Angle	Approx. Weight	Case
	Inches	Degrees	Pounds	qty.
GS-11	4 1/8	45° to 120°	6.60	1

- Swivel clamping jaws draw joints together as thumbscrew is tightened
- Rigid steel base - non-marring polyamide clamp body
- Soft pads prevent scratching and slipping



## Miter clamp set (MCX)

BESSEY® Product #	Clamping Capacity	Range of Angle	Approx. Weight	Case
	Inches	Degrees	Pounds	qty.
MCX	4	22.5°, 30°, 40°, 60°	1.68	1

- When combined with any standard bar clamp the MCX can easily clamp various angles
- Provides even pressure onto the mitre
- No tools required to change angles
- Holds work pieces up to 4" wide

## Irregular angle clamp set (ES)



BESSEY® Product #	Set Contains ...	Approx. Weight	Case
		Pounds	qty.
ES Set	Includes 2 blocks and 2 caps	0.85	1

\*Clamps not included.



- Ideal for securing glued miter joints and angled joint faces
- Used with BESSEY® TGK & TGJ bar clamps
- Ball & socket system applies direct force on angle for 15° to 180°



# Hold down products

## Your benefits at a glance:

- 1. Single component design**  
Self-positioning, single component design.
- 2. Workpieces of different thicknesses**  
Wide clamping range. Adjustments up to 5".
- 3. T-slot table ready**  
For T-slot hold down tables in machine shop applications.
- 4. Sturdy frame**  
Strong, ductile iron body.
- 5. Swivel rocker**  
Swivel rocker attached to body to prevent loss.



- Self-positioning, single component design
- Swivel rocker attached to body
- Strong, ductile iron body
- For T-slot hold down tables in machine shop applications
- L Series has a longer throw than S series

### RiteHite (Model L)



BESSEY Product #	Bolt Size	Max Clamping Height	Nominal Dimensions	Recommended Load Limit	Max Torque	Approx. Weight	Case
	Inches	Inches	Inches	Pounds	LB-FT	Pounds	qty.
375L	3/8	1 1/4	3 3/4 x 1 1/8 x 1 1/4	7,000	43	0.56	1
500L	1/2	2 1/2	5 3/4 x 1 7/16 x 1 1/2	8,800	73	1.50	1
625L	5/8	3 1/2	6 3/4 x 1 3/4 x 1 5/8	14,500	163	2.62	1
750L	3/4	5	9 x 2 1/8 x 2 1/4	19,000	237	5.00	1
1000L	1	5	11 1/8 x 2 7/8 x 3 3/8	51,000	850	12.25	1

### RiteHite (Model S)



BESSEY Product #	Bolt Size	Max Clamping Height	Nominal Dimensions	Recommended Load Limit	Max Torque	Approx. Weight	Case
	Inches	Inches	Inches	Pounds	LB-FT	Pounds	qty.
376S	3/8	1	3 x 1 1/8 x 1 1/4	8,800	55	0.50	1
501S	1/2	1 3/4	4 1/4 x 1 7/16 x 1 1/2	13,200	110	1.10	1
626S	5/8	2 3/4	5 1/2 x 1 3/4 x 1 5/8	19,000	213	2.12	1
751S	3/4	3 1/2	7 x 2 1/8 x 2 1/4	27,600	345	4.20	1
1001S	1	3	9 x 2 7/8 x 3 3/8	67,000	1,116	10.25	1

RiteHite charts are for general guidelines only. Specific values may vary depending on but not limited to bolt size and strength, condition, size and pitch of threads, coefficient of friction between parts and other variable factors.

# Hold down clamps

## Hold down table clamp



BESSEY® Product #	Throat Depth	Clamping Capacity	Clamping Force	Approx. Weight	Case
	Inches	Inches	Pounds	Pounds	qty.
2400HD-10	4 3/4	9 1/2	2220	7.85	1



- Vibration proof, ratchet action
- Tilting and height-adjustable
- Mounting hole accepts 5/8" bolts

## Claw machine clamp (MCL)



BESSEY® Product #	Throat Depth	Clamping Capacity	Clamping Force	Approx. Weight	Case
	Inches	Inches	Pounds	Pounds	qty.
MCL-8	4 3/4	8	1450	6.75	1



- Cantilever jaw for clamping in tight space with screw positioned outside of work area
- Full rotation outside of work area
- For drilling and light milling work
- Mounting hole accepts 5/8" diameter bolts

## Jig & fixture clamp (FC)



BESSEY® Product #	Throat Depth	Clamping Capacity	Clamping Force	Approx. Weight	Case
	Inches	Inches	Pounds	Pounds	qty.
FC24-8	4 1/2	8	2660	6.50	5

- Rotates 360° for easy work-piece removal
- Pressure plate swivels up to 35°
- Bushing O/D is 1 13/16"

# Edge clamps

## Your benefits at a glance

### 1 Unique twin spindle

Outer spindle acts on the clamping jaws – inner spindle applies pressure to the front edge. Impact resistant plastic handle for one-handed use.

### 2 Large jaws

Two large non-slip, opposing, gentle jaws for positive grip.

### 3 Swivel pressure plate

The large pressure plate swivels to apply pressure on demand. Removable protective cap.

### 4 Light aluminum housing

Lightweight, corrosion-resistant aluminum housing designed for high static stress load for convenient, one-handed edge clamp EKT.



- For quick one-handed operation
- Light weight

- For quick one-handed operation
- Non-slip rubber lining
- Ergonomic wood handle

- Light duty clamp for basic edging projects
- Comes packaged on retail ready backer card

- Choice of single or double spindle design
- For use with bar clamps with rails up to 1/2" thick



## Edge clamp, one hand (EKT)

BESSEY® Product #	Throat Depth Inches	Clamping Capacity Inches	Clamping Force Pounds	Approx. Weight Pounds	Case qty.
EKT-55	3	2 1/8	500	2.00	6

## Edge clamp (KF2-4)

BESSEY® Product #	Throat Depth Inches	Clamping Capacity Inches	Approx. Weight Pounds	Case qty.
KF2	3	1/2 - 2	1.68	1
KF4	4.3	1/2 - 3	3.48	1
KF4 Pads	Replacement pads (2 pack)			

## 3-way edge clamp, light duty (EC)

BESSEY® Product #	Throat Depth Inches	Clamping Capacity Inches	Clamping Force Pounds	Approx. Weight Pounds	Case qty.
B-EC3	2 1/2	2 1/2	300	0.95	3

## Spindle clamps

BESSEY® Product #	Description	Approx. Weight Pounds	Case qty.
KT5-1CP	1 spindle	0.75	1
KT5-2	2 spindles	1.30	1





**Your benefits at a glance**

**1 Sliding clamping arm**

Rapid-action, polyamide, sliding top jaw infinitely adjusts to fit project ... the clamping capacity of a 4" spring clamp with the comfort of a 2" clamp.

**2 Ergonomic 2-component handle**

Soft, anti-slip two component handle for comfort.

**3 Softpads**

Soft-touch pads protect sensitive workpieces and eliminate marring of work.



**VarioClippix® (XV) variable spring clamp\***



BESSEY® Product #	Throat Depth Inches	Clamping Capacity Inches	Approx. Weight Pounds	Case qty.
XV3-50	1 1/2	2 1/8	0.19	10
XV5-100	2	4	0.40	12

**VarioClippix® (XV) variable spring clamp, double jaw\***



BESSEY® Product #	Throat Depth Inches	Clamping Capacity Inches	Approx. Weight Pounds	Case qty.
XV5-170	2	6 1/2	0.45	12

\* VarioClippix® come on backer cards in a retail ready full colour shelf display - must order case qty to get shelf display.



- Unique design allows you to adjust the clamp up to 4" ... it does the work of 4 different spring clamps, offering optimum handling
- Polyamide material is lightweight, strong and corrosion resistant
- Sliding top jaw and sliding bottom jaw infinitely adjusts up to 6 1/2"
- Polyamide material is lightweight, strong and corrosion resistant

# Spring clamps

- Long tapered nose for hard to reach spaces
- Ergonomic 2-component handle designed for comfort and a firm grip
- Soft-touch pads for a non-marring grip



## Clippix® needle nose plastic spring clamps (XCL)

BESSEY® Product #	Throat Depth	Clamping Capacity	Approx. Weight	Case
	Inches	Inches	Pounds	qty.
XCL2	2	2	.04	12
XCL2-Set (2xXCL2)	2	2	.08	24
XCL5	4	3	.07	8

- Made from durable, lightweight polyamide
- Ergonomic 2-component handle designed for comfort and a firm grip



## Clippix® (XC) plastic spring clamps

BESSEY® Product #	Throat Depth	Clamping Capacity	Approx. Weight	Case
	Inches	Inches	Pounds	qty.
XC1	3/4	3/4	0.02	96
XC1-Set (7xXC1)	3/4	3/4	0.15	12
XC2	1 1/8	1	0.04	20
XC3	1 1/2	1 3/4	0.11	36
XC5	1 15/16	2	0.26	20
XC5-2	1 1/2	2	0.26	48
XC7	2 3/4	3	0.46	10

- Light duty spring clamps for home or shop
- 4 popular sizes, conveniently packaged in a mesh bag



## Plastic spring clamp set

BESSEY® Product #	Includes	Approx. Weight	Case
		Pounds	qty.
XC-14PC	2 x 3" clamps 2 x 2" clamps 4 x 1" clamps 6 x 3/4" clamps	2.06	4

- Heavy duty resin construction with pivoting jaw
- Ratcheting mechanism – quick action, quick release



## Ratcheting spring clamps, deep reach (XCRU)

BESSEY® Product #	Throat Depth	Clamping Capacity	Approx. Weight	Case
	Inches	Inches	Pounds	qty.
XCRU3	2	2	0.50	12
XCRU5	4	4	0.75	12

- Heavy duty resin construction with pivoting jaw
- Ratcheting mechanism – quick action, quick release



## Ratcheting spring clamp set (XCR)

BESSEY® Product #	Includes	Approx. Weight	Case
		Pounds	qty.
XCR-4PC	4 x 2" clamps	2.20	6

- Vinyl tips and handles prevent marring
- Heavy duty springs for firm grip
- Nickel plating resists corrosion



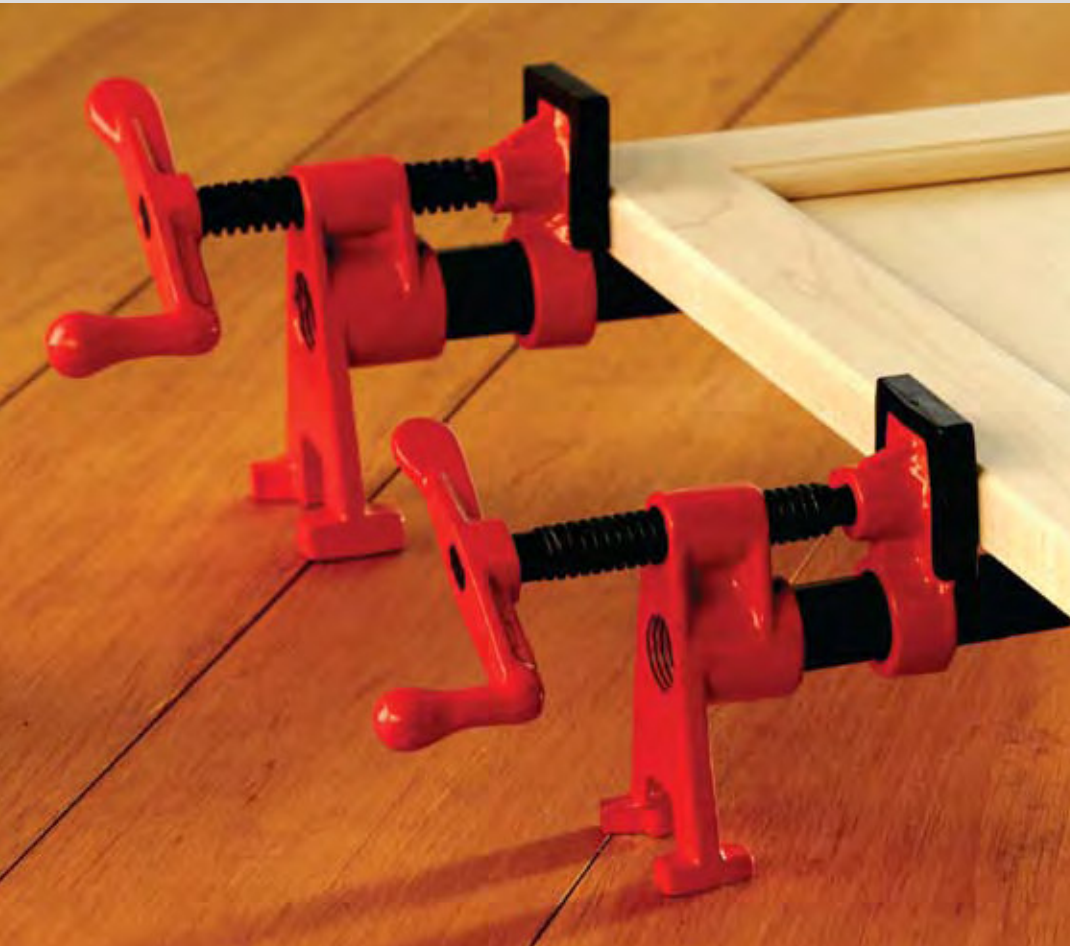
## Steel spring clamps (XM)

BESSEY® Product #	Throat Depth	Clamping Capacity	Approx. Weight	Case
	Inches	Inches	Pounds	qty.
XM3	1	1 1/4	0.17	48
XM5	2	2 1/4	0.40	24
XM7	3	3 5/16	0.80	6
XM10	4	5	1.00	6



\* All items come packed in retail ready full colour shelf display - must order case qty to get shelf display.

# Pipe clamps



## Your benefits at a glance:

- 1 H shape foot assembly**  
"H" shape foot assembly stabilizes clamp in two dimensions giving dual-axis stability.
- 2 Extra high base**  
Extra high base provides industry leading clearance from the work surface.
- 3. Cast jaws**  
Cast jaws for durability.
- 4. Smooth spindle**  
Smooth action spindle.



### Pipe clamp, H style (BPC)

BESSEY® Product #	Black Pipe Diameter Inches	Approx. Weight Pounds	Case qty.
BPC-H34	3/4	3.05	4
BPC-H12	1/2	2.05	4

\* BPC comes in retail ready full colour clamshell packaging



- BPC-H12 = 1/2"
- BPC-H34 = 3/4"



### Pipe clamp, traditional style (PC)

BESSEY® Product #	Black Pipe Diameter Inches	Approx. Weight Pounds	Case qty.
PC34	3/4	2.40	20
PC12	1/2	1.65	20
PC34-DR	3/4	2.15	12

- PC12 = 1/2"
- PC34 = 3/4"
- PC34DR = Deep reach (2 1/2")



# C-clamps



- **NEW** 540 series C-clamps made of high tensile ductile alloy casting provides excellent strength in a cast clamp
- Black oxide spindle to resist corrosion



## **NEW** 540 series ductile alloy C-clamps

BESSEY® Product #	Throat Depth Inches	Clamping Capacity Inches	Clamping Force Pounds	Approx. Weight Pounds	Case qty.
540-2-1/2	1 3/4	0- 2 1/2	1100	1.20	6
540-3	1 7/8	0-3	1800	1.60	6
540-4	2 1/16	0-4	2150	2.23	6
540-5	2 1/2	0-5	2250	2.69	6
540-6	2 3/4	0-6	2450	3.20	6
540-8	3 1/4	0-8	2750	4.74	1
540-10	3 5/8	0-10	2850	7.56	1
540-12	3 5/8	0-12	2850	8.18	1
540-14	3 3/4	0-14	2850	8.18	1

# C-clamps



## Regular duty (CDF), extra deep throat C-clamps



BESSEY® Product #	Throat Depth	Clamping Capacity	Clamping Force	Approx. Weight	Case
	Inches	Inches	Pounds	Pounds	qty.
CDF402	2	0-2	3,500	1.40	36
CDF403	2 3/8	0-3	3,500	1.90	24
CDF404	2 3/4	0-4	6,200	3.50	12
CDF406	3 5/8	0-6	6,900	5.40	8
CDF408	4 1/2	0-8	6,900	7.90	6
CDF410	5 3/8	0-10	8,000	11.60	4
CDF412	5 3/4	0-12	9,300	14.00	2

- Black oxide spindle to resist corrosion
- Powder coated frame
- Ball-in-swivel pad

## Regular duty (CDFCHV), extra deep throat C-clamps



BESSEY® Product #	Throat Depth	Clamping Capacity	Clamping Force	Approx. Weight	Case
	Inches	Inches	Pounds	Pounds	qty.
CDF402CHV	2	0-2	3,500	1.40	36
CDF403CHV	2 3/8	0-3	3,500	1.90	24
CDF404CHV	2 3/4	0-4	6,200	3.50	12
CDF406CHV	3 5/8	0-6	6,900	5.40	8
CDF408CHV	4 1/2	0-8	6,900	7.90	6
CDF410CHV	5 3/8	0-10	8,000	11.60	4
CDF412CHV	5 3/4	0-12	9,300	14.10	2

- HiVis frame, copper spindle
- Powder coated frame
- Ball-in-swivel pad

## Heavy duty (100 Series)



BESSEY® Product #	Throat Depth	Clamping Capacity	Clamping Force	Approx. Weight	Case
	Inches	Inches	Pounds	Pounds	qty.
B-102	1 1/2	0-2	7,500	1.50	1
B-103	2	0-3	8,750	2.65	1
B-104	2 1/4	0-4	10,000	4.15	1
B-106	2 1/2	2-6	11,250	6.00	1
B-108	2 3/4	4-8	12,500	7.80	1
B-110	2 7/8	6-10	13,750	8.70	1
B-112	2 15/16	8-12	15,000	12.10	1

- Hex head on T-handle
- Made in USA

## Heavy service (HS Series) (Fully closing)



BESSEY® Product #	Throat Depth	Clamping Capacity	Clamping Force	Approx. Weight	Case
	Inches	Inches	Pounds	Pounds	qty.
B-HS0	1 1/16	0-3/4	2,800	0.33	1
B-HS1	1 3/32	0-1 3/8	5,600	1.00	1
B-HS1.5	1 7/16	0-1 13/16	8,750	1.80	1
B-HS2	1 7/8	0-2 3/8	12,500	4.50	1
B-HS3	2 1/2	0-3 5/16	16,250	7.10	1
B-HS4	2 7/8	0-4 5/8	20,000	11.00	1
B-HS5	3 1/16	0-5 3/8	23,800	14.90	1
B-HS6	3 1/2	0-6 5/8	27,500	19.30	1
B-HS8	4 1/8	0-8 1/4	31,250	27.50	1
B-HS10	4	0-10 3/8	35,000	40.10	1
B-HS12	4	0-12 1/2	40,000	47.80	1

- Hex head on spindle
- Made in USA

# C-clamps



- General purpose C clamp
- A range openings and clamping force
- Galvanized finish: Models CM10-CM30
- Powder coated: Models CM40-CM80



## Light duty (CM), malleable cast

BESSEY® Product #	Throat Depth	Clamping Capacity	Clamping Force	Approx. Weight	Case
	Inches	Inches	Pounds	Pounds	qty.
CM23DR*	3 1/2	0-2	400	0.80	6
CM34DR	4 1/2	0-3	500	1.50	6
CM10	1	0-1	400	0.25	24
CM13	3	0-1	400	0.40	24
CM15*	1 1/2	0-1 1/2	400	0.30	24
CM20	1 1/2	0-2	400	0.40	18
CM22*	1 3/8	0-2 1/2	600	0.45	18
CM25	2 1/2	0-2 1/2	600	0.75	18
CM30*	1 3/4	0-3	800	0.90	12
CM40*	3 1/4	0-4	1,200	1.80	9
CM50	3 1/4	0-5	1,200	2.40	9
CM60*	3 1/2	0-6	1,200	2.70	6
CM80*	4	0-8	1,200	3.75	6

\* Comes packed in retail ready full colour shelf display - must order case qty to get shelf display.



- Malleable cast-iron frame, powder coated to resist corrosion - ideal for DIY
- Red quick-release button for rapid opening and closing
- Chrome plated spindle and swivel pad



## Quick release (QRCC)

BESSEY® Product #	Throat Depth	Clamping Capacity	Clamping Force	Approx. Weight	Case
	Inches	Inches	Pounds	Pounds	qty.
QRCC3	1 3/4	0-3 1/2	1,200	1.87	6
QRCC4	2 1/4	0-4 3/8	1,200	2.37	6
QRCC6	3 7/8	0-6 5/8	1,200	4.07	6



- Provides twin top pressure points in light duty clamping applications – ideal for hobbies, crafts and light trades



## Double head (DHCC)

BESSEY® Product #	Throat Depth	Clamping Capacity	Clamping Force	Approx. Weight	Case
	Inches	Inches	Pounds	Pounds	qty.
DHCC-4	2 1/4	0-4	1,200	1.60	6
DHCC-6	2 7/8	0-6	1,200	3.00	6



# SuperGrips™ Grip pliers



## Your benefits at a glance:

- 1 Adjustable top handle**  
Adjustable screw/lock nut (on top handle) adjusts clamping force.
- 2 Adjustable bottom handle**  
Adjustable screw/lock nut (on lower lever) adjusts jaw angle (up to 7°) for clamping tapered parts
- 3 Adjustable sliding arm**  
Infinitely adjustable jaw for a quick parallel clamp.
- 4. Sturdy rail**  
Cold drawn, profiled steel rail.

### SuperGrips™ with profiled rail (SG)



BESSEY® Product #	Throat Opening	Jaw Force	Clamping Force	Approx. Weight	Case
	Inches	Inches	Pounds	Pounds	qty.
SG-4WP	2 1/2	4	440	2.50	10
SG-8WP	2 1/2	8	440	2.70	10
SG Pads (pair)	Replaceable pads			0.10	1 pr

### SuperGrips™ pipe clamp (SG)



BESSEY® Product #	Throat Depth	Clamping Capacity	Clamping Force	Approx. Weight	Case
	Inches	Inches	Pounds	Pounds	qty.
SG24-PC	2 3/4	4 1/2	310	2.75	10

### SuperGrip™ deep reach clamp



BESSEY® Product #	Throat Depth	Clamping Capacity	Clamping Force	Approx. Weight	Case
	Inches	Inches	Pounds	Pounds	qty.
SG5-DR	3	4 1/2	310	2.50	10

### SuperGrip™ welder's fork (SG)



BESSEY® Product #	Throat Depth	Clamping Capacity	Clamping Force	Approx. Weight	Case
	Inches	Inches	Pounds	Pounds	qty.
SG24-VWF	3	4	310	3.05	10



- Grip plier and clamp in one tool
- Cradle jaw aligns and holds pipe firmly in place
- Clamps over angle iron, channel iron and other obstacles
- Two independently adjustable sliding heads can be set at different heights and depths

# Industrial magnets



- Quality magnets for fast, simple set-up
- Simple magnet holds work at set angle

- Double magnets are joined at a pivot point and can hold work at any angle

- Quality magnetic multi-angle square for fast, simple set-up

- Quality magnetic multi-angle square for fast, simple set-up



## Magnetic squares (WMS)

BESSEY® Product #	Pull	Nominal Dimensions	Pre-set Angles	Approx. Weight	Case
	Pounds				
WMS-1	66	3 <sup>3</sup> / <sub>4</sub> x 4 <sup>3</sup> / <sub>8</sub> x 3 <sup>3</sup> / <sub>4</sub>	90/45	1.10	10
WMS-3	48.5	3 <sup>3</sup> / <sub>8</sub> x 3 <sup>3</sup> / <sub>8</sub> x 5 <sup>5</sup> / <sub>8</sub>	90/45	0.70	15
WMS-5	112	3 <sup>3</sup> / <sub>4</sub> x 4 <sup>3</sup> / <sub>8</sub> x 3 <sup>3</sup> / <sub>4</sub>	90/45	1.35	10

## Double magnetic square (WMS)

BESSEY® Product #	Pull	Nominal Dimensions	Angle Range	Approx. Weight	Case
	Pounds				
WMS-4	110	6 <sup>1</sup> / <sub>8</sub> x 3 <sup>3</sup> / <sub>8</sub> x 5 <sup>5</sup> / <sub>8</sub>	0 to 180	1.30	6

## Multi-angle magnetic square (WMS)

BESSEY® Product #	Pull	Nominal Dimensions	Pre-set Angles	Approx. Weight	Case
	Pounds				
WMS-6	52	4 x 2 <sup>1</sup> / <sub>2</sub> x 9 <sup>9</sup> / <sub>16</sub>	30/45/60/75/90	0.62	10

## Arrowhead magnetic square (WMS)

BESSEY® Product #	Pull	Nominal Dimensions	Pre-set Angles	Approx. Weight	Case
	Pounds				
WMS-7	41	4 <sup>3</sup> / <sub>4</sub> x 3 <sup>1</sup> / <sub>4</sub> x 9 <sup>9</sup> / <sub>16</sub>	90/45	0.76	15

# Industrial magnets



## “Chunky” magnetic square (CMS)



BESSEY® Product #	Pull	Nominal Dimensions	Pre-set Angles	Approx. Weight	Case
	Pounds	Inches	Degrees	Pounds	qty.
CMS-1	100	3 <sup>3</sup> / <sub>4</sub> x 4 <sup>3</sup> / <sub>8</sub> x 1 <sup>5</sup> / <sub>8</sub>	90/45	2.70	6

## “Big Daddy” magnetic square (BDMS)



BESSEY® Product #	Pull	Nominal Dimensions	Pre-set Angles	Approx. Weight	Case
	Pounds	Inches	Degrees	Pounds	qty.
BDMS-1	100	8 x 8 x 1 <sup>5</sup> / <sub>8</sub>	90/45	7.70	1

## “On/Off” magnetic square (WMS)



BESSEY® Product #	Pull	Nominal Dimensions	Pre-set Angles	Approx. Weight	Case
	Pounds	Inches	Degrees	Pounds	qty.
WMS-8	75	3 <sup>3</sup> / <sub>8</sub> x 4 <sup>3</sup> / <sub>8</sub> x 1 <sup>1</sup> / <sub>4</sub>	90/45	2.25	10

## Magnetic ground clamps (MGC)



BESSEY® Product #	Pull	Nominal Dimensions	Amps	Approx. Weight	Case
	Pounds	Inches		Pounds	qty.
MGC-1	55	3 <sup>1</sup> / <sub>2</sub> x 2	250	1.75	4
MGC-2	55	3 <sup>1</sup> / <sub>2</sub> x 2	800	1.85	4

## Mag Pick-Up (MPU)



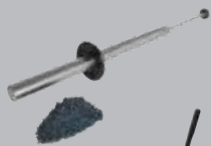
BESSEY® Product #	Description	Approx. Weight	Case
		Pounds	qty.
MPU-1	Magnetic disc on 35” tubular shaft	1.35	1

## MagStick (MS)



BESSEY® Product #	Description	Approx. Weight	Case
		Pounds	qty.
MS-1	Magnet on a 26” telescopic shaft, pocket clip	0.16	25

## MagWand (MW)



BESSEY® Product #	Description	Approx. Weight	Case
		Pounds	qty.
MW-1	22” length	1.70	1

## MagSweep (MSP)



BESSEY® Product #	Description	Approx. Weight	Case
		Pounds	qty.
MSP-24	Shop floor magnet on wheels, 24” swath	45.00	1

- Quality magnetic square for easy set ups
- T-handle for easy release of the magnet

- Quality magnetic square for easy set ups
- T-handle for easy release of the magnet

- Quality magnetic square for easy set ups
- On and Off switch on magnet

- Quality magnetic square for easy set ups

- Magnetic disc on 35” tubular shaft for picking up small metal parts – also useful during clean-up

- 5 1/2” “pen-sized” pocket magnet extends to 26” to pick-up hard to reach small metal objects

- Can collect up to 12 lb of swarf in a pass for a cleaner safer welding and machine shop
- Rolls easily over industrial work surfaces and dumps waste by simply pulling sliding magnetic insert

- Rolling shop-floor magnet on wheels, 24” swath



## Other clamps

- Very light weight 2 oz. (55 gr.)
- Designed for delicate work - ideal for hobbies, crafts and model assembly



- Extra-large contact surfaces
- Light duty universal clamp/spreader for bench top projects
- Easily converts to a spreader without tools



- Non-marring glue resistant jaws
- Can be clamped to work surface with TK-6 table clamps (see page 23)
- TK-6 clamps included with S-10



- Cold-drawn, carbon-steel spindles and swivel nuts
- Large handles for comfort and torque
- Oiled maple jaws



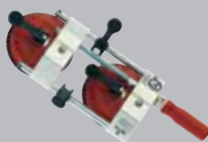
- For safe transportation of panels of a variety of materials
- High-friction rubber coating on the moving clamping jaws
- 150 lb weight carrying capacity



- Fast-easy adjusting moveable jaw – simply slide to work piece and place lock pin in perforated rail
- Rugged construction – cast iron jaw, steel rail



- Twin vacuum cups for clamping non-porous, solid surface material such as granite, marble, corian, plastic or glass
- Levelling toggles ensure smooth surface joint, reduces grinding, sanding and finishing



- For laying parquet, plank and laminate flooring
- 157 in. strap



### Mini clamp (AM4)

BESSEY Product #	Throat Depth	Clamping Capacity	Approx. Weight	Case
	Inches	Inches	Pounds	qty.
AM4	2	1 1/2	.12	30

### UniKlamp®, large surface case clamp

BESSEY® Product #	Throat Depth	Clamping Capacity	Clamping Force	Approx. Weight	Case
	Inches	Inches	Pounds	Pounds	qty.
UK3.006	3 1/8	6	330	1.40	6
UK3.012	3 1/8	12	330	1.60	6
UK3.024	3 1/8	24	330	1.90	6

### Portable mini-vise (S)

BESSEY® Product #	Jaw Width	Clamping Capacity	Approx. Weight	Case
	Inches	Inches	Pounds	qty.
S-10	3 5/8	4	1.80	20
TK-6	Holds vise clamps to flat work surface			

### Wood handscrew clamps (HS)

BESSEY® Product #	Jaw Length	Clamping Capacity	Throat Depth	Spindle Diameter	Approx. Weight	Case
	Inches	Inches	Inches	Inches	Pounds	qty.
HS-6	6	3	3	5/16	1.00	12
HS-8	8	5	4	7/16	1.25	6
LHS-10	10	7	6	7/16	2.24	3
HS-12	12	9 1/4	6	7/16	4.00	3

### Panel carrier (KFP)

BESSEY® Product #	Opening	Approx. Weight	Case
	Inches	Pounds	qty.
KFP	1/2 - 2.5	2.2	1
KFP Pads	Replacement pads (2 pack)		

### T-bar sash clamps

BESSEY® Product #	Throat Depth	Clamping Capacity	Clamping Force	Approx. Weight	Case
	Inches	Inches	Pounds	Pounds	qty.
BT-36	2	39	3990	18.00	1
BT-96	2	98	3330	32.00	1
BT-120	2	120	2660	40.00	1

### Solid surface seaming tool (PS)

BESSEY® Product #	Clamping Capacity	Cup Diameter	Clamping Force	Approx. Weight	Case
	Inches	Inches	Pounds	Pounds	qty.
PS55	2 1/8	5	48 1/2	3.80	1

### Flooring strap clamps (SVH)

BESSEY® Product #	Strap Length	Clamp Plate Width	Clamping Force	Approx. Weight	Case
	Inches	Inches	Pounds	Pounds	qty.
SVH400XL	157	4 3/4	220	1.80	5

# Accessories



## Service part, plastic replacement caps



BESSEY® Product #	Suitable for ...	Approx. Weight	Case
		Pounds	qty.
3101392 (Previously TRP2.5)	TGJ2.5 (4 sets)	0.25	1
3101394 (Previously TRP4.0)	TG4.0 (3 sets)	0.25	1
3101395 (Previously TRP4.5)	TG4.5 (3 sets)	0.25	1
3101396 (Previously TRP5.5)	TGK, TG5.5, & TG7.0 (3 sets)	0.25	1



- Soft plastic cap for non-slip, gentle clamping

## Service part, standard pads



BESSEY® Product #	Suitable for ...	Approx. Weight	Case
		Pounds	qty.
3101339 (Previously SOP-SMNPV1)	TGJ2.5 (4 pc)	0.45	1
3101183 (Previously SOP-SMNPV2)	TG4.0, RSC-8, 660S, J18 (4 pc)	0.45	1
3101188 (Previously SOP-SMNPV3)	TG5.5, TG7.0, TGK4.5, RSC-12 et 24, 1200S, SQ, SGL, SG30VAD, TSC4, SQ-J (4 pc)	0.45	1

\* Replaceable pads have a snap ring on the inside. Put spindle 'ball' in the opening, apply pressure and the pad attaches.

## Service part, MorPads



BESSEY® Product #	Suitable for ...	Approx. Weight	Case
		Pounds	qty.
3100736 (Previously 12/18/24/48P)	12/18/24/4800 Series	0.45	1
3100737 (Previously 7200P)	7200 Series	0.50	1
3101192 (Previously MPD-R) (Rough Face)	12/18/24/4800 Series	0.45	1
3101193 (Previously MPD-V) (V Groove)	12/18/24/4800 Series	0.45	1



## Clamp force indicators (FIN)



BESSEY® Product #	Suitable for ...	Approx. Weight	Case
		Pounds	qty.
FIN250	TG4, 660S, RSC 8	.5	1
FIN350	TGK4.5, RSC-12-24, 1200S-12-24	.5	1

- No tools required to change. Remove pads from clamps and re-attach FIN in its place.
- Green zone only indicates approximate pressure: FIN250 = 550 lbs, FIN350 = 700 lbs

## Variable angle device (VAD)



BESSEY® Product #	Range of Angle	Swivel	Approx. Weight	Case
	Degrees	Degrees	Pounds	qty.
VAD	up to 60°	360°	2.00	1

- Floating pads tilt 60° inward or outward – ideal for clamping or aligning round, oval and angular pieces
- Easy to install and remove; swivel 360°
- Fits up to 2400 series clamps

## Pipe clamp jaws (PC Jaw)



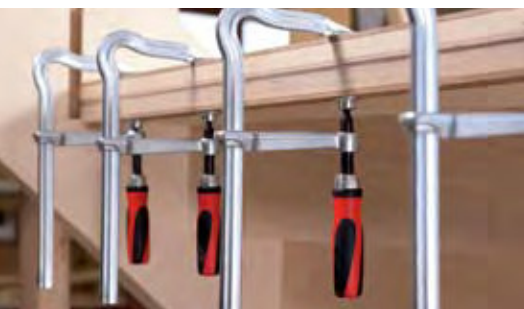
BESSEY® Product #	Approx. Weight	Case
	Pounds	qty.
PC Jaws	2.80	1 pair

- Holds pipe in alignment for welding
- Jaws & clamp arms made from malleable cast iron
- Ideal for clamping round or oval work pieces
- Accessory for TG4, TG4.5, TGK, TG5.5 & TG7 BESSEY® clamps

## Accessories



- Made from soft hand-friendly plastic



- For items 660-S, RSC-8, VC950 and J-18 spare part for Tommy Bar and Spindle is special order number 3100120 (RSC-12 and RSC-24 is 3100121)

### Accessory, BESSEY® Grip handles (2 per package)



BESSEY® Product #	Suitable for ...	Approx. Weight	Case
		Pounds	qty.
BGSM-100	RSC-8, 660S, SQ-4	0.30	25
BGLG-120	TG5.5, TG7.0, TGK4.5, RSC-12 & 24, 1200S, SQ, SGL, SG30VAD, 1800-S	0.20	25

### Service part, 2K handle/spindle with pad



BESSEY® Product #	Suitable for ...	Approx. Weight	Case
		Pounds	qty.
H/S-2KWPV1	TGJ2.5	0.55	1
3101182 (Previously H/S-2KWPV2)	TG4.0, RSC-8, 660S	0.60	1
3101186 (Previously H/S-2KWPV3)	TG4.5	0.60	1
3101187 (Previously H/S-2KWPV4)	TG5.5, TG7.0, TGK4.5, RSC-12 & 24, 1200S, SGL	0.65	1

### Service part, sliding arm assembly combi-set



BESSEY® Product #	Suitable for ...	Approx. Weight	Case
		Pounds	qty.
3100398	1200/1800 Screw (.700" Dia.)	1.1	1
3100399	2400 Screw (.775" Dia.) (also fits SQ, VC2220)	1.3	1
3100400	4800/8500 Screw (.850" Dia.)	1.5	1
3100401	7200 Screw (.925 Dia.)	3.5	1

Combi-set includes a handle, spindle, MorPad and pin

### Service part, sliding arm



BESSEY® Product #	Suitable for ...	Approx. Weight	Case
		Pounds	qty.
3000157 (Previously 1200A Arm)	Arm only	1.00	1
3000159 (Previously 1800A Arm)	Arm only	1.25	1
3001411 (Previously 2400A Arm)	Arm only for old style 2400S	1.45	1
3007822	Arm only for new style 2400S	1.45	1
3005120 (Previously HPCA)	Arm only	3.00	1
3001412 (Previously 4800A Arm)	Arm only	3.05	1
3001413 (Previously 7200A Arm)	Arm only	5.75	1
3100579 (Previously NLR7200)	Nut & lock ring for 7200 Series	1.00	1

### Service part, wedges for 7200/8500

BESSEY® Product #	Suitable for ...	Approx. Weight	Case
		Pounds	qty.
3000689 (Previously 7200W)	For 7200 series	0.30	1
3005122 (Previously 8500W)	For 8500 series	0.25	1



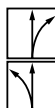
## Traditional tin snips



## Compound leverage snips



### Ideal snips



Continuous, straight and curved cuts, right



Continuous, straight and curved cuts, left

### Outline cutting snips



Short, straight and narrow curved cuts, right



Short, straight and narrow curved cuts, left

### Straight cutting snips



Straight and curved cuts, large radius in both left and right directions



Short, straight cuts, notch

## Left cutting snips



## Right cutting snips



## 1. Types

### Traditional tin snips

Edges and handle are traditionally forged into one unit. The force required for cutting is determined by the ratio of edge length to the handle length.

### Compound leverage snips

The cutting heads and handles are made separately and are both hinged. When they're attached to each other, this double hinged (double fulcrumed) assembly greatly increases the leverage, requiring less physical effort.

## 2. Models

### Ideal snips

These multi-purpose snips can cut through a metal sheet (straight-cut) as well as cut large and small contours or radii (outline-cut). It doesn't matter whether you're cutting at the edge (edge cut) or at the centre of a sheet. You can naturally use ideal snips for notching-operations.

### Outline cutting snips

Best suited for fine and narrow radius cuts near the edges of a metal sheet. You can use the delicately shaped edge of these snips to cut extremely narrow shapes or curves without any problem.

### Straight cutting snips

Ideal for cutting a metal sheet at the centre and/or near the edges. You can use long edges of this tool to cross-cut and notch large metal sheets quickly and precisely with less effort.

## 3. Right cutting or left cutting snips.

### What's the difference?

Right cutting snips are designed so that they can cut right radii, a curve from left to right easily. Left cutting snips are the best for radius cuts from right to left.

The common perception is that, right cutting snips are for right-handers, and left cutting snips for left-handers. This is not true. If a right-handed person is cutting a radius from left to right, using right cutting snips (radius from left to right), you have to cut outwards from your wrist. With left cutting snips, (radius is then from right to left) you can cut inwards from your wrist. This is considerably more ergonomic. Try it out once!

## 4. Grades

The service life of cutting edges depends directly on the grade of steel used and the processing. High-performance snips with case-hardened HSS – edges fulfill the most stringent requirements regarding service life and cutting performance. Cutter heads of the HSS-Tin grade are additionally coated with extremely hard titanium nitride that reduces wear and tear. Other cutting materials, namely special high quality steel, quality steel and standard quality steel, are available depending on the application and the frequency of use.

Grades of blade steel	min. HRC	Durability	Appro. Tensile Strength of Blade PSI	Max. Sheet thickness at tensile strength of:		
				58 000 PSI	116 000 PSI	159 000 PSI
<b>HSS-TiN***</b> D27AH-TiN	64	+++++	370,000	0.06"/16 ga	0.05"/18 ga	0.02"/25 ga
<b>HSS</b> D27AH	64	++++	370,000	0.06"/16 ga	0.05"/18 ga	0.02"/25 ga
<b>Special High Grade Steel</b> D29SS; D29ASS; D122S; D123S	60	+++	320,000	0.06"/16 ga	0.05"/18 ga	/
<b>High Grade Steel</b> D08; D16; D22A; D27; D-SPC; D-SPS	58	++	300,000	0.06"/16 ga	0.05"/18 ga	/
<b>Standard Quality Steel</b> D146..	54	+	266,000	0.04"/19 ga	0.03"/22 ga	/

\*\*\* TiN (Titanium-Nitride) has an HRC rating of 85.

# Snips & knives



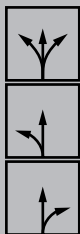
- High grade steel cutting blades – up to HRC 59
- Micro-serrations for slip proof cutting

- High grade steel cutting blades – HRC up to 61
- Micro-serrations for slip proof working
- Right or left cutting versions

- High grade steel cutting blades – HRC up to 61
- Optimized leverage ratio - 25% less effort
- Compact cutter head
- Right or left cutting versions



- Case-hardened, high-speed steel edges – HRC up to 68
- For long continuous, straight and curved cuts
- Available in right or left cutting versions



## Aviation snips (D16)

BESSEY® Product #	Overall Length	Blade Length	Sheet Thickness	Approx. Weight	Case
	Inches	Inches	mm	Pounds	qty.
D16S-BE	9 1/2	1 3/4	1.2	1.25	5
D16L-BE	9 1/2	1 9/16	1.2	1.25	5
D16-BE	9 1/2	1 9/16	1.2	1.25	5



## Special hard cutting snips (D29SS)

BESSEY® Product #	Overall Length	Blade Length	Sheet Thickness	Approx. Weight	Case
	Inches	Inches	mm	Pounds	qty.
D29SS-BE	10 1/4	1 9/16	1.2	1.25	5
D29SSL-BE	10 1/4	1 9/16	1.2	1.25	5



## Offset snips, optimized (D29ASS)

BESSEY® Product #	Overall Length	Blade Length	Sheet Thickness	Approx. Weight	Case
	Inches	Inches	mm	Pounds	qty.
D29ASS-BE	10 1/4	1 5/16	1.2	1.25	5
D29ASSL-BE	10 1/4	1 5/16	1.2	1.25	5



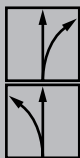
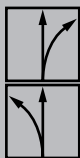
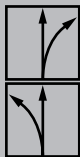
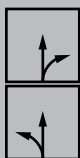
## Offset, extra hard, high tolerance, Titanium (D27AH TIN)

BESSEY® Product #	Overall Length	Blade Length	Sheet Thickness	Approx. Weight	Case
	Inches	Inches	mm	Pounds	qty.
D27AH-TIN-BE	10 1/4	1 5/16	1.2	1.25	1
D27AHL-TIN-BE	10 1/4	1 5/16	1.2	1.25	1



## Offset, extra hard, high tolerance (D27AH)

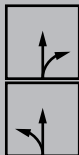
BESSEY® Product #	Overall Length	Blade Length	Sheet Thickness	Approx. Weight	Case
	Inches	Inches	mm	Pounds	qty.
D27AH-BE	10 1/4	1 5/16	1.2	1.25	1
D27AHL-BE	10 1/4	1 5/16	1.2	1.25	1



# Snips & knives



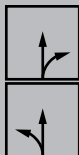
## Offset snips, short radii (D08)



BESSEY® Product #	Overall Length	Blade Length	Sheet Thickness	Approx. Weight	Case
	Inches	Inches	mm	Pounds	qty.
D08-BE	9	1 1/16	1.2	0.75	5
D08L-BE	9	1 1/16	1.2	0.75	5



## Offset snips, standard (D16A)



BESSEY® Product #	Overall Length	Blade Length	Sheet Thickness	Approx. Weight	Case
	Inches	Inches	mm	Pounds	qty.
D16A-BE	9 1/2	1 5/16	1.2	1.25	5
D16AL-BE	9 1/2	1 5/16	1.2	1.25	5



## Long-nose, multi-purpose (D22AL)



BESSEY® Product #	Overall Length	Blade Length	Sheet Thickness	Approx. Weight	Case
	Inches	Inches	mm	Pounds	qty.
D22AL-BE	11	2 1/2	1.2	1.25	5



## Strap cutter (D123)

BESSEY® Product #	Overall Length	Blade Length	Approx. Weight	Case
	Inches	Inches	Pounds	qty.
D123S-SB	10 1/4	1 1/2	1.3	5



## Super nibbler (D24)

BESSEY® Product #	Overall Length	Blade Length	Approx. Weight	Case
	Inches	Inches	Pounds	qty.
D24-SB	10 1/2	N/A	1.0	5



- High grade steel cutting blade – HRC up to 59
- Micro-serrations for slip proof working
- Special flat cutter head enables cutting narrowest radius
- Available in right or left cutting versions



- High grade steel cutting blade – HRC up to 59
- Micro-serrations for slip proof working
- For continuous, straight and curved cuts
- Available in right or left cutting versions

- High grade steel, extra long cutting blade designed for continuous cuts – HRC up to 59
- Angled cutter heads keep hands free from work
- For long continuous straight and large radius cuts
- Available in left cutting version only

- Cuts steel straps up to 32 x 1mm (1 1/4 x 1/32) with one hand
- Holds banding tightly during cut to prevent banding from springing up
- Ergonomic handle and compound leverage for comfort and ease of use

- Capable of cutting a 2" (50 mm) hole (starting hole of 8.5 mm required)
- Distortion free cuts of up to 1.2 mm thick in normal sheet metal
- Integrated chip-separator for cleanly cut notches



# Snips & knives



- Stainless steel blade
- Spring opens cutter automatically
- Thumb operated lock

- Stainless steel blade
- For multi-core cable with diameters up to 10 mm (3/8")

- Stainless steel blade cuts wide range of material
- Spring opens cutter automatically, thumb operated lock
- Ergonomic handle with soft-insert
- Notched blade for wire stripping

- Stainless steel cutter edge cuts wide range of material
- Angled cutter head keeps hands safely free from work
- Handle made of robust fibreglass-reinforced plastic with soft-insert

- Light duty, nickel plated, serrated blades
- With wire cutting notch

- Quality steel, polished edges, black handle
- Curved blade

- Heavy duty with stainless steel blades
- Offset, black lacquered handles, extended finger grip



## MultiSnip - Straight (D47, D48)

BESSEY® Product #	Overall Length	Blade Length	Approx. Weight	Case
	Inches	Inches	Pounds	qty.
D47-BE	5 1/2	1 1/4	0.13	15
D48-BE	7 3/4	1 5/8	0.25	10



## MultiSnip - Offset (D48A)

BESSEY® Product #	Overall Length	Blade Length	Approx. Weight	Case
	Inches	Inches	Pounds	qty.
D48A-BE	7 1/2	1 3/8	0.25	10



## Cable cutter (D49)

BESSEY® Product #	Overall Length	Blade Length	Approx. Weight	Case
	Inches	Inches	Pounds	qty.
D49-BE	6 1/2	NA	0.25	10



## Combinox (D50)

BESSEY® Product #	Overall Length	Blade Length	Approx. Weight	Case
	Inches	Inches	Pounds	qty.
D50-BE	7 1/2	1 3/8	0.25	10



## MultiSnip master (D51)

BESSEY® Product #	Overall Length	Blade Length	Approx. Weight	Case
	Inches	Inches	Pounds	qty.
D51A-BE	9 1/4	2	0.25	10



## Electrician scissor (D53)

BESSEY® Product #	Overall Length	Blade Length	Approx. Weight	Case
	Inches	Inches	Pounds	qty.
D53-BE	5	1 9/16	0.25	5



## Jeweler's snip (75)

BESSEY® Product #	Overall Length	Blade Length	Approx. Weight	Case
	Inches	Inches	Pounds	qty.
75	7	1 5/16	1.20	5



## Professional shears (D860)

BESSEY® Product #	Overall Length	Blade Length	Approx. Weight	Case
	Inches	Inches	Pounds	qty.
D860-200-BE	8	3 3/4	0.25	6
D860-225-BE	9	4 1/2	0.50	6
D860-250-BE	10	4 3/4	0.75	6
D860-300-BE	12	6 1/2	1.00	6

# Snips & knives



## American pattern snips (D146)



BESSEY® Product #	Overall Length	Blade Length	Sheet Thickness	Approx. Weight	Case
	Inches	Inches	mm	Pounds	qty.
D146-200-BE	8	1 5/8	1.0	0.50	6
D146-250-BE	10	2 1/8	1.0	1.10	6
D146-300-BE	12	2 11/16	1.0	1.60	6
D146-350-BE	14	2 13/16	1.0	2.00	6

## SuperPower snips - Straight blade (DSPS)



BESSEY Product #	Overall Length	Blade Length	Sheet Thickness	Approx. Weight	Case
	Inches	Inches	mm	Pounds	qty.
D-SPS8	8 1/2	1 3/4	1.2	0.75	24
D-SPS11	11 1/2	2 1/4	1.2	1.25	18

## SuperPower snips - Offset blade (DSPC)



BESSEY Product #	Overall Length	Blade Length	Sheet Thickness	Approx. Weight	Case
	Inches	Inches	mm	Pounds	qty.
D-SPC8	8 1/2	1 3/4	1.2	0.75	24
D-SPC11	11 1/2	2 1/4	1.2	1.25	18

*\*All SuperPower snips come packed in retail ready full colour shelf display - must order case qty to get shelf display.*

## Folding utility knife - Aluminum handle



BESSEY Product #	Overall Length	Blade Length	Approx. Weight	Case
	Inches	Inches	Pounds	qty.
D-BKAH	6 1/4	2 1/4	0.30	12

## Folding utility knife - Wood handle



BESSEY Product #	Overall Length	Blade Length	Approx. Weight	Case
	Inches	Inches	Pounds	qty.
D-BKWH	6 1/4	2 1/4	0.30	12

## Folding utility knife - ABS comfort grip handle



BESSEY Product #	Overall Length	Blade Length	Approx. Weight	Case
	Inches	Inches	Pounds	qty.
D-BKPH	6 1/4	2 1/4	0.40	12

*\*All knives come packed in retail ready full colour shelf display - must order case qty to get shelf display.*

## Folding utility knife set - ABS comfort grip handle



BESSEY Product #	Overall Length	Blade Length	Approx. Weight	Case
	Inches	Inches	Pounds	qty.
D-BKPH Set	6 1/4	2 1/4	0.70	8



- Quality steel cutting blade
- For straight cuts

- (DSPS) Straight jaws
- (DSPC) Offset jaws
- Compound SuperPower snips need 50 % less hand force than ordinary pattern snips
- Cuts up to 19 ga. (1.0 mm) cold rolled steel or 25 ga. (0.6 mm) stainless steel – HRC up to 62

All knives include:

- Folding and locking blades with belt-clip
- Quick blade exchange - uses standard blades
- Spring blade release

Model D-BKPH also features:

- Thumb cushion for maximum contact pressure
- Blade compartment for replacement blades
- 5 extra blades included

- 4 types of blades: normal, scoring, linoleum and rug
- Comes in a convenient case

# Industrial fluids & compounds

- The original ready-to-use metal putty
- To build up, apply in thin layers, allow to dry and repeat
- Drying time for 1/8" = 3-4 hours
- Can be drilled, tapped, ground, milled, chisselled, sanded, etc.



## Lab-metal®

BESSEY® Product #	Unit/Container	Approx. Weight	
		Pounds	Case qty.
	Imperial/Metric		
LM-06	6 oz/170 g	6.00	12
LM-12	12 oz/340 g	13.00	12
LM-24	24 oz/680 g	23.00	12
LM-48	48 oz/1.4 g	42.00	12

- The original ready-to-use metal putty
- To build up, apply in thin layers, allow to dry and repeat
- Dry for 24 hours then cure at 425° for 1 hour
- Can be drilled, tapped, ground, milled, chisseled, sanded, etc.



## Hi-Temp Lab-metal®

BESSEY® Product #	Unit/Container	Approx. Weight	
		Pounds	Case qty.
	Imperial/Metric		
HT-14	14 oz/397 g	15.00	12
HT-24	24 oz/680 g	23.00	12

- Surface-prep for regular & Hi-Temp Lab-metal
- Thins Lab-Metal for brushing or spraying - leaves no film



## Lab-solvent

BESSEY® Product #	Unit/Container	Approx. Weight	
		Pounds	Case qty.
	Imperial/Metric		
LS-16	16 oz/473 ml	16.00	12
LS-128	1 gal/3.8L	19.00	2

- Heat absorbing, insulating paste
- Insulates adjacent material against heat transfer during welding, soldering brazing or other heat treatment
- Non-toxic and easily applied direct from container



## Heat block

BESSEY® Product #	Unit/Container	Approx. Weight	
		Pounds	Case qty.
	Imperial/Metric		
HB-PNT	1 pint/.47L	5.00	12

- Water based version is non-toxic and biodegradable, safe for use outdoors
- Paint friendly - no silicones
- Non-flammable CO<sub>2</sub> propellant
- No CFC's or trichloroethylene



## Spatter release

BESSEY® Product #	Unit/Container	Description	Approx. Weight	
			Pounds	Case qty.
	Imperial/Metric			
16300-16	16 oz/473 ml	Water based	16.00	12
1620-16	16 oz/473 ml	Solvent based	19.00	12

- For grinding wheels, sanding belts and saw blades
- Eliminates heat build up and belt loading – extends wheel life



## Stick-Kut™ lubricating stick wax

BESSEY® Product #	Unit/Container	Approx. Weight	
		Pounds	Case qty.
	Imperial/Metric		
15-SK	15 oz stick	12	12

\*Only available for sale in Canada.



## Relton dark thread cutting oil



BESSEY® Product #	Unit/Container	Approx. Weight	Case
		Pounds	qty.
TC014-01G <sup>12</sup>	1 US gal/3.785L	36	4
TC014-05G <sup>12</sup>	5 US gal/18.925L	45	1

## Relton light thread cutting oil



BESSEY® Product #	Unit/Container	Approx. Weight	Case
		Pounds	qty.
TC016-01G <sup>12</sup>	1 US gal/3.785L	36	4
TC016-05G <sup>12</sup>	5 US gal/18.925L	45	1

## Relton Rel-Saw band saw fluid



BESSEY® Product #	Unit/Container	Approx. Weight	Case
		Pounds	qty.
01G-RS <sup>12</sup>	1 US gal/3.785L	38	4
05G-RS <sup>12</sup>	5 US gal/18.925L	45	1

## Relton OPTION 1® cutting fluid



BESSEY® Product #	Unit/Container	Approx. Weight	Case
		Pounds	qty.
OPT114 <sup>1</sup>	4 oz/118 ml	7.4	24
OPT455 <sup>1</sup>	16 oz/473 ml	14.8	12
OPT4 <sup>1</sup>	1 US gal/3.785L	36.1	4
OPT20 <sup>1</sup>	5 US gal/18.925L	47	1
OPT205 <sup>12</sup>	55 US gal/205L	500	1

## Relton A-9® aluminum cutting fluid



BESSEY® Product #	Unit/Container	Approx. Weight	Case
		Pounds	qty.
A9114 <sup>1</sup>	4 oz/118 ml	9	24
A9455 <sup>1</sup>	16 oz/473 ml	16	12
A94 <sup>1</sup>	1 US gal/3.785L	33	4
A920 <sup>1</sup>	5 US gal/18.925L	42	1
A9205 <sup>12</sup>	55 US gal/205L	450	1

## Relton Air-Flo air tool oil



BESSEY® Product #	Unit/Container	Approx. Weight	Case
		Pounds	qty.
AF-PNT <sup>12</sup>	1 pint/473 ml	13.50	12
AF-01G <sup>12</sup>	1 US gal/3.785L	36	4

## Relton Rapid Tap® cutting fluid



BESSEY® Product #	Unit/Container	Approx. Weight	Case
		Pounds	qty.
RT114 <sup>1</sup>	4 oz/118 ml	11	24
RT455 <sup>1</sup>	16 oz/455 ml	17	12
RT4 <sup>1</sup>	1 US gal/3.785L	42	4
RT20 <sup>1</sup>	5 US gal/18.925L	45	1
RT205 <sup>12</sup>	55 US gal/205L	500	1

- Reduces friction; longer tool life; clean burr-free thread
- Forms tough film – for use on a wide variety of materials

- Reduces friction; longer tool life; clean burr-free thread
- Forms tough film – for use on a wide variety of materials

- Improves blade life; reduces machine wear
- Contains rust and corrosion inhibitors

- Water based; Non-WHMIS – environmentally friendly
- No chlorine, no sulfur, non-toxic formula – safe to use
- Case pricing applies (1-4, 5+)

- Specifically for aluminum – use for tapping, drilling, boring, milling, turning, broaching, reaming and sawing
- May be used on other metals
- Non-WHMIS - environmentally friendly
- Case pricing applies (1-4, 5+)

- High quality air tool and air line lubricant

- Fine machined finish even on tough materials such as aluminum, beryllium, brass, bronze, cast iron, copper, inconel, magnesium, molybdenum, stainless steel, and stellite
- No 1,1,1 Trichloroethane – ozone friendly, non-toxic, and non-flammable; non-WHMIS
- Case pricing applies (1-4, 5+)

<sup>1</sup>Relton fluids and compounds are available for sale but only in Canada.

<sup>2</sup>Available as a special order only. Non-stock.

# Specialty products



- Geared head offers 4X the power of an ordinary wrench alone
- Requires no air or electricity
- Up to 12,000 ft. lbs. of torque
- Use with a torque wrench when precision required (always calibrate to be sure)
- X4 Units can be stacked for higher power

- Limits risk of “spring back” when extender bar is used
- Coupled with larger model – makes entire system anti-backlash

## Torque multipliers (X4)



BESSEY Product #	Input Capacity	Output Capacity	Input Drive	Output Drive	Ratio	Approx. Weight	Case
	Foot/Pounds	Foot/Pounds	Inches	Inches		LB-FT	
JM-750	250	1,000	1/2	3/4	4:01	7.00	1
JM-1000	500	2,000	3/4	1	4:01	14.00	1
JM-1200 <sup>1</sup>	209	3,000	3/4	1 1/2	14.3:1	30.00	1
JM-1500 <sup>1</sup>	923	4,000	1	1 1/2	4.33:1	30.00	1
JM-2000 <sup>1</sup>	1739	8,000	1	1 1/2	4.6:1	47.00	1
JM-2500 <sup>1</sup>	2000	12,000	1	2 1/2	6:01	73.00	1

<sup>1</sup>Available for sale as a special order item. Non-stock item.

## Anti-Backlash torque multiplier

BESSEY Product #	Input Capacity	Output Capacity	Input Drive	Output Drive	Ratio	Approx. Weight	Case
	Foot/Pounds	Foot/Pounds	Inches	Pounds		LB-FT	
JM-1000-R <sup>1</sup>	500	2,000	3/4	1		15.00	1

<sup>1</sup>Available for sale as a special order item. Non-stock item.

# Reco induction bearing heaters



## Reco induction bearing heaters



BESSEY® Product #	Voltage	Standard Cross Bars	Optional Cross Bars	Approx. Weight	Case
	Volts(amps)	Inches	Inches	Pounds	qty.
SC 110D	110V(17 amp)	3/4, 2	1/2*, 1 1/4	56.00	1
SC 110V	110V(17 amp)	3/4, 2	1/2*, 1 1/4	52.00	1
SC 220V	220V(9 amp)	3/4, 2	1/2*, 1 1/4	52.00	1
BC 220V	220V(30 amp)	1 1/4, 3	3/4, 1, 2	200.00	1
BC 440V	440V(20 amp)	1 1/4, 3	3/4, 1, 2	200.00	1
BC 550V	550V(20 amp)	1 1/4, 3	3/4, 1, 2	200.00	1
BCS 220	220V(30 amp)	1 1/4, 3	1*, 2	235.00	1
BCS 440	440V(20 amp)	1 1/4, 3	1*, 2	235.00	1
BCS 550	550V(20 amp)	1 1/4, 3	1*, 2	235.00	1

\*Only available in the USA.

**WARNING:** Do NOT operate an induction heater if you wear a heart pace-maker. The strong magnetic field emitted by the heater may affect operation of such devices.

## Cross bars for bearing heaters



BESSEY® Product #	Suitable for ...	Approx. Weight	Case
	Fits model #	Pounds	qty.
SC 1/2"*	SC		
SC 3/4"	SC		
SC 1 1/4"	SC		
SC 2"	SC		
BC 3/4"	BC		
BC 1"	BC		
BC 1 1/4"	BC		
BC 2"	BC		
BC 3"	BC		
BCS 1"*	BC Special		
BCS 1 1/4"	BC Special		
BCS 2"	BC Special		
BCS 3"	BC Special		
SC on/off	On/Off switch for SC		
BC on/off	On/Off switch for BC		

\*Only available in the USA.

## Raising blocks



BESSEY® Product #	Fits model	Height	Width	Approx. Weight	Case
	#	Inches	Inches	Pounds	qty.
SCRB	SC	2 3/8	2 5/8	7.50	1
BCRB	BC, BCS	5	3 5/8	31.00	1

## Pyrometer/Thermometer



BESSEY® Product #	Description	Approx. Weight	Case
		Pounds	qty.
HH-11 A	Pyrometer/Thermometer w/probe & flex cord	2.00	1
SMP-HT-K-6H	Replacement probe with handle	1.50	1

- Extend bearing life and cut operating cost by eliminating hammering and pounding to cold-mount bearings
- Works on bearings, sprockets, gears, couplings, sleeves
- Reduces risk to operator from flames, torches or oil baths
- Demagnetizes bearings – easy to use, ready in minutes

### Model SC110D (110V or 220V)

- Bearing capacity: 4 3/8" x 11" O.D. (14" OD with optional raising blocks)
- Computer chip monitors and stabilizes temperature
- Display panel (pre-set times, temperatures) & auto shut off

### Model SC110V (110V or 220V)

- Bearing capacity: 4 3/8" x 11" O.D. (14" OD with optional raising blocks)

### Model BC (220V, or 440V or 550V)

- Bearing capacity: 8" x 22" O.D. (32" OD with optional raising blocks)

### Model BC Special (110V or 220V)

- Bearing capacity: 12 1/4" x 22" O.D. (32" OD with optional raising blocks)

- All Bearing heaters are single phase units

- Increase OD of bearing that can be fit
- SCRB fits SC Models
- BCRB fits BC and BCS Models

- Multi-purpose measuring device for bearings, gears, etc.
- Digital readout from -50°C (-58°F) to +1300°C (+2000°F)
- Probe max rated for 650° (1200°F)



# Index

Catalog Number	UPC	Page Number
01G-RS	7 85401 94128 1	46
05G-RS	7 85401 94640 8	46
1000L	7 88502 14140 6	25
1001S	7 88502 14141 3	25
1200-S8	7 88502 20032 5	4
1200-S12	7 88502 20015 8	4
1200-S18	7 88502 20016 5	4
1200-S24	7 88502 20017 2	4
15-SK	7 85401 08015 7	45
1620-16	7 88502 06201 5	45
16300-16	7 88502 06200 8	45
1800-S8	7 88502 20000 4	1
1800-S12	7 88502 20001 1	1
1800-S18	7 88502 20002 8	1
1800-S24	7 88502 20003 5	1
1800L-12	7 88502 00986 7	17
2400 HD-10	7 88502 00995 9	26
2400J-12	7 88502 19032 9	8
2400S-8	7 88502 00801 3	1
2400S-12	7 88502 00803 7	1
2400S-16	7 88502 00807 5	1
2400S-20	7 88502 00804 4	1
2400S-24	7 88502 00808 2	1
2400S-36	7 88502 00809 9	1
2400S-48	7 88502 00815 0	1
2400S-60	7 88502 00806 8	1
3000157	7 88502 00910 2	39
3000159	7 88502 00911 9	39
3000689	7 88502 00938 6	39
3001411	7 88502 00912 6	39
3001412	7 88502 00914 0	39
3001413	7 88502 00917 1	39
3005120	7 88502 00919 5	39
3005122	7 88502 00939 3	39
3007822	7 88502 00893 8	39
3100398	7 88502 00547 0	39
3100399	7 88502 00548 7	39
3100400	7 88502 00549 4	39
3100401	7 88502 00550 0	39
3100579	7 88502 00940 9	39
3100736	7 88502 00920 1	38
3100737	7 88502 00924 9	38
3101182	7 88502 00748 1	39
3101183	7 88502 00751 1	38
3101186	7 88502 00747 4	39

Catalog Number	UPC	Page Number
3101187	7 88502 00746 7	39
3101188	7 88502 00750 4	38
3101192	7 88502 00921 8	38
3101193	7 88502 00922 5	38
3101339	7 88502 00752 8	38
3101370	0 91162 00644 3	12
3101371	0 91162 00645 0	12
3101392	0 91162 00946 8	38
3101394	0 91162 00947 5	38
3101395	0 91162 00948 2	38
3101396	0 91162 00949 9	38
375L	7 88502 14100 0	25
376S	7 88502 14101 7	25
4800J-20	7 88502 19043 5	8
4800S-12	7 88502 00810 5	2
4800S-18	7 88502 00818 1	2
4800S-24	7 88502 00819 8	2
4800S-36	7 88502 00823 5	2
4800S-48	7 88502 00813 6	2
4800S-60	7 88502 00814 3	2
500L	7 88502 14110 9	25
501S	7 88502 14111 6	25
540-2-1/2	7 88502 20054 7	31
540-3	7 88502 20055 4	31
540-4	7 88502 20056 1	31
540-5	7 88502 20061 5	31
540-6	7 88502 20057 8	31
540-8	7 88502 20058 5	31
540-10	7 88502 20059 2	31
540-12	7 88502 20060 8	31
540-14	7 88502 20062 7	31
625L	7 88502 14120 8	25
626S	7 88502 14121 5	25
660-S8	7 88502 20012 7	4
660-S12	7 88502 20013 4	4
660-S18	7 88502 20014 1	4
7200S-12	7 88502 00820 4	2
7200S-18	7 88502 00824 2	2
7200S-36	7 88502 00825 9	2
75	7 88502 01185 3	43
750L	7 88502 14130 7	25
751S	7 88502 14131 4	25
8500HPC-6	7 88502 00850 1	2
8500HPC-14	7 88502 00852 5	2
A9114	7 85401 20004 3	46

Catalog Number	UPC	Page Number
A920	7 85401 20640 3	46
A9205	7 85401 27040 4	46
A94	7 85401 20128 6	46
A9455	7 85401 20016 6	46
AF-01G	7 85401 80128 8	46
AF-PNT	7 85401 80016 8	46
AM4	0 91162 00083 0	37
B-102	7 88502 02062 6	32
B-103	7 88502 02063 3	32
B-104	7 88502 02064 0	32
B-106	7 88502 02065 7	32
B-108	7 88502 02066 4	32
B-110	7 88502 02067 1	32
B-112	7 88502 02068 8	32
BANR400	0 91162 00063 2	22
BC 1"	7 88502 16056 8	48
BC 1-1/4"	7 88502 16057 5	48
BC 2"	7 88502 16058 2	48
BC 220V	7 88502 16000 1	48
BC 3"	7 88502 16059 9	48
BC 3/4"	7 88502 16055 1	48
BC 440V	7 88502 16010 0	48
BC 550V	7 88502 16020 9	48
BC on/off	7 88502 16291 3	48
BCRB	7 88502 16050 6	48
BCS 1"	7 88502 16155 8	48
BCS 1-1/4"	7 88502 16156 5	48
BCS 2"	7 88502 16157 2	48
BCS 220	7 88502 16100 8	48
BCS 3"	7 88502 16158 9	48
BCS 440	7 88502 16110 7	48
BCS 550	7 88502 16120 6	48
BDMS-1	7 88502 09030 8	36
B-EC3	0 91162 00818 8	27
BGLG-120	7 88502 00908 9	39
BGP	0 91162 69012 3	16
BGSM-100	7 88502 00909 6	39
B-HS0	7 88502 02071 8	32
B-HS1	7 88502 02072 5	32
B-HS1.5	7 88502 02073 2	32
B-HS2	7 88502 02074 9	32
B-HS3	7 88502 02075 6	32
B-HS4	7 88502 02076 3	32
B-HS5	7 88502 02077 0	32
B-HS6	7 88502 02078 7	32

Catalog Number	UPC	Page Number	Catalog Number	UPC	Page Number	Catalog Number	UPC	Page Number
B-HS8	7 88502 02079 4	32	D08-BE	7 88502 00026 0	42	D-SPC11	7 88502 00553 1	44
B-HS10	7 88502 02080 0	32	D08L-BE	7 88502 00027 7	42	D-SPS8	7 88502 00555 5	44
B-HS12	7 88502 02081 7	32	D123S-SB	7 88502 01123 5	42	D-SPS11	7 88502 00556 2	44
BPC-H12	0 91162 00943 7	30	D146-200-BE	7 88502 01159 4	44	DT 2400-12	7 88502 00816 7	2
BPC-H34	0 91162 00942 0	30	D146-250-BE	7 88502 01160 0	44	DT 2400-24	7 88502 00817 4	2
BT-36	7 88502 01300 0	37	D146-300-BE	7 88502 01161 7	44	DUO16-6	0 91162 00042 7	20
BT-96	7 88502 01302 4	37	D146-350-BE	7 88502 01162 4	44	DUO16-8	0 91162 00044 1	20
BT-120	7 88502 01303 1	37	D16A-BE	7 88502 01157 0	42	DUO30-6	0 91162 00043 4	20
BTB30A		16	D16AL-BE	7 88502 01168 6	42	DUO30-8	0 91162 00045 8	20
BTBSV24		16	D16-BE	7 88502 01174 7	41	DUO45-8	0 91162 00046 5	20
BTBTG5		16	D16L-BE	7 88502 01175 4	41	DUO65-8	0 91162 00047 2	20
BTB30	0 91162 69000 0	16	D16S-BE	7 88502 01173 0	41	EKT-55	0 91162 00679 5	27
CDF402	7 88502 01460 1	32	D22AL-BE	7 88502 01111 2	42	EZS15-8	7 88502 20021 9	18
CDF402CHV	7 88502 01497 7	32	D24-SB	7 88502 01124 2	42	EZS30-8	7 88502 20022 6	18
CDF403	7 88502 01461 8	32	D27AH-TIN-BE	7 88502 01152 5	41	EZS45-8	7 88502 20023 3	18
CDF403CHV	7 88502 01498 4	32	D27AH-BE	7 88502 01151 8	41	EZS60-8	7 88502 20024 0	18
CDF404	7 88502 01462 5	32	D27AHL-TIN-BE	7 88502 01164 8	41	EZS90-8	7 88502 20053 0	18
CDF404CHV	7 88502 01499 1	32	D27AHL-BE	7 88502 01150 1	41	EZS Combo	7 88502 20063 9	18
CDF406	7 88502 01463 2	32	D29ASS-BE	7 88502 01169 3	41	ES Set	0 91162 00725 9	24
CDF406CHV	7 88502 01501 1	32	D29ASSL-BE	7 88502 01170 9	41	FC24-8	7 88502 00990 4	26
CDF408	7 88502 01464 9	32	D29SS-BE	7 88502 01154 9	41	FIN250	0 91162 00089 2	38
CDF408CHV	7 88502 01502 8	32	D29SSL-BE	7 88502 01166 2	41	FIN350	0 91162 00082 3	38
CDF410	7 88502 01465 6	32	D47-BE	7 88502 01103 7	43	GS-11	0 91162 00503 3	24
CDF410CHV	7 88502 01503 5	32	D48A-BE	0 91162 01100 3	43	GS12-8K	7 88502 20090 5	7
CDF412	7 88502 01466 3	32	D48-BE	7 88502 01104 4	43	GS16K	7 88502 20070 7	7
CDF412CHV	7 88502 01504 2	32	D49-BE	7 88502 01105 1	43	GS16-12K	7 88502 20091 2	7
CDS24-10 WP	7 88502 00952 2	15	D50-BE	7 88502 01108 2	43	GS20K	7 88502 20071 4	7
CDS24-12 WP	7 88502 00953 9	15	D51A-BE	7 88502 00028 4	43	GS25K	7 88502 20072 1	7
CDS24-20 WP	7 88502 00954 6	15	D53-BE	7 88502 01163 1	43	GS30K	7 88502 20073 8	7
CL-24	7 88502 00833 4	5	D860-200-BE	7 88502 01178 5	43	GS60K	7 88502 20075 2	7
CLS-Shoe	7 88502 00830 3	5	D860-225-BE	7 88502 01179 2	43	GSCC2.506	0 91162 00959 8	19
CM10	0 91162 00026 7	33	D860-250-BE	7 88502 01180 8	43	GSCC2.512	0 91162 00960 4	19
CM13	0 91162 00027 4	33	D860-300-BE	7 88502 01181 5	43	GSCC2.518	0 91162 00961 1	19
CM15	0 91162 00028 1	33	D-BKAH	0 91162 00953 6	44	GSCC2.524	0 91162 00962 8	19
CM20	0 91162 00029 8	33	D-BKPH	0 91162 00954 3	44	GSCC2.530	0 91162 00963 5	19
CM22	0 91162 00030 4	33	D-BKPH Set	0 91162 00977 2	44	GSCC2.536	0 91162 00964 2	19
CM23DR	0 91162 00037 3	33	D-BKWH	0 91162 00955 0	44	GSCC3.512	0 91162 00966 6	19
CM25	0 91162 00031 1	33	DHBC-12	0 91162 00930 7	19	GSCC3.518	0 91162 00967 3	19
CM30	0 91162 00032 8	33	DHBC-24	0 91162 00931 4	19	GSCC3.524	0 91162 00968 0	19
CM34DR	0 91162 00038 0	33	DHBC-36	0 91162 00932 1	19	GSCC5.012	0 91162 00972 7	19
CM40	0 91162 00033 5	33	DHCC-4	0 91162 00933 8	33	GSCC5.018	0 91162 00973 4	19
CM50	0 91162 00034 2	33	DHCC-6	0 91162 00934 5	33	GSCC5.024	0 91162 00974 1	19
CM60	0 91162 00035 9	33	DKX	0 91162 00088 5	20	GSL30	7 88502 20078 3	7
CM80	0 91162 00036 6	33	DuoKlamp® Combo	0 91162 00061 8	20	GSL60	7 88502 20079 0	7
CMS-1	7 88502 09040 7	36	D-SPC8	7 88502 00552 4	44	GSM20	7 88502 20089 9	7

# Index

Catalog Number	UPC	Page Number	Catalog Number	UPC	Page Number	Catalog Number	UPC	Page Number
GSM25	7 88502 20080 6	7	KR-J2K	0 91162 00640 5	12	MMS-8	7 88502 00999 7	4
GSM30	7 88502 20081 3	7	KR-JP	0 91162 00639 9	12	MMS-12	7 88502 00996 6	4
GSM40	7 88502 20082 0	7	KRK2440	0 91162 00633 7	10	MPU-1	7 88502 09088 9	36
GSM50	7 88502 20083 7	7	KRK2450	0 91162 00634 4	10	MS-1	7 88502 09082 7	36
GSM60	7 88502 20084 4	7	KR-RPP	0 91162 00641 2	12	MSP-24	7 88502 09080 3	36
H/S-2KWPV1	7 88502 00749 8	39	KRV-40	0 91162 00646 7	11	MW-1	7 88502 09070 4	36
HB-PNT	7 88502 14787 3	45	KRV-60	0 91162 00647 4	11	OPT114	7 85401 40004 7	46
HH-11 A	7 88502 16476 4	48	KRV-78	0 91162 00648 1	11	OPT20	7 85401 40640 7	46
HS-6	0 91162 00822 5	37	KRV-98	0 91162 00649 8	11	OPT205	7 85401 47040 8	46
HS-8	0 91162 00823 2	37	KR-VO	0 91162 00650 4	12	OPT4	7 85401 40128 0	46
HS-12	0 91162 00825 6	37	KRX2440	0 91162 00619 1	10	OPT455	7 85401 40016 0	46
HT-14	7 88502 14720 0	45	KRX2450	0 91162 00620 7	10	PC Jaws	7 88502 70860 9	38
HT-24	7 88502 14721 7	45	KT5-1CP	0 91162 00675 7	27	PC12	0 91162 01055 6	30
J18-8	7 88502 19030 5	8	KT5-2	0 91162 00676 4	27	PC34	0 91162 01050 1	30
JM-750	7 88502 18800 5	47	LC-4	0 91162 00984 0	17	PC-34DR	0 91162 00039 7	30
JM-1000	7 88502 18810 4	47	LC-8	7 88502 00980 5	17	PG12	0 91162 02101 9	20
JM-1000-R	7 88502 18860 9	47	LC-12	7 88502 00982 9	17	PG24	0 91162 02102 6	20
JM-1200	7 88502 18820 3	47	LC-20	7 88502 00983 6	17	PS55	0 91162 02020 3	37
JM-1500	7 88502 18830 2	47	LHS-10	0 91162 00824 9	37	QRCC3	0 91162 00944 4	33
JM-2000	7 88502 18840 1	47	LM-06	7 88502 14700 2	45	QRCC4	0 91162 00945 1	33
JM-2500	7 88502 18850 0	47	LM-12	7 88502 14701 9	45	QRCC6	0 91162 00952 9	33
KBTP-4	0 91162 00638 2	12	LM2.004	0 91162 01300 7	19	RSC-8	7 88502 00700 9	6
KBX20	0 91162 00810 2	10	LM2.006	0 91162 01301 4	19	RSC-12	7 88502 00701 6	6
KF2	0 91162 00104 2	27	LM2.008	0 91162 01302 1	19	RSC-18	7 88502 00702 3	6
KF4	0 91162 00105 9	27	LM2.012	0 91162 01303 8	19	RSC-24	7 88502 00703 0	6
KF4 Pads	0 91162 00106 6	27	LM-24	7 88502 14702 6	45	RT114	7 88502 07510 7	46
KFP	0 91162 00107 3	37	LM3.006	0 91162 01304 5	19	RT20	7 88502 07525 1	46
KFP Pads	0 91162 00108 0	37	LM3.012	0 91162 01306 9	19	RT205	7 88502 07530 5	46
KLI3.004	0 91162 00990 1	17	LM3.024	0 91162 01317 5	19	RT4	7 88502 07520 6	46
KLI3.008	0 91162 00991 8	17	LM3.036	0 91162 01319 9	19	RT455	7 88502 07515 2	46
KLI3.012	0 91162 00992 5	17	LM4.008	0 91162 01309 0	19	S-10	0 91162 05501 4	37
KLW4.012	0 91162 01226 0	17	LM4.012	0 91162 01311 3	19	SC 1/2"	7 88502 16255 5	48
KLW4.024	0 91162 01228 4	17	LM4.016	0 91162 01312 0	19	SC 1-1/4"	7 88502 16257 9	48
KP Block adaptor	0 91162 00664 1	10	LM4.024	0 91162 01314 4	19	SC 110D	7 88502 16201 1	48
KP	0 91162 00665 8	10	LM-48	7 88502 14703 3	45	SC 110V	7 88502 16200 5	48
KR3.512	0 91162 00624 5	9	LMU2.004	0 91162 01324 3	19	SC 2"	7 88502 16258 6	48
KR3.524	0 91162 00625 2	9	LMU2.006	0 91162 01325 0	19	SC 220V	7 88502 16202 9	48
KR3.531	0 91162 00626 9	9	LMU2.008	0 91162 01326 7	19	SC 3/4"	7 88502 16256 2	48
KR3.540	0 91162 00627 6	9	LS-16	7 88502 14730 9	45	SC on/off	7 88502 16290 6	48
KR3.550	0 91162 00628 3	9	LS-128	7 88502 14731 6	45	SCRB	7 88502 16250 0	48
KR3.560	0 91162 00629 0	9	MCL-8	7 88502 00987 4	26	SG Pads (Pair)	7 88502 05281 8	34
KR3.582	0 91162 00630 6	9	MCX	0 91162 00110 3	24	SG24-PC	7 88502 05216 0	34
KR3.598	0 91162 00631 3	9	MGC-1	7 88502 09050 6	36	SG24-VWF	7 88502 05207 8	34
KR-AS	0 91162 00642 9	10	MGC-2	7 88502 09060 5	36	SG30VAD	7 88502 00545 6	3
KR-EC	0 91162 00663 4	12	MMS-4	7 88502 00998 0	4	SG-4WP	0 91162 15200 6	34



Catalog Number	UPC	Page Number	Catalog Number	UPC	Page Number	Catalog Number	UPC	Page Number
SG5-DR	7 88502 05213 9	34	TG4.530+2K	0 91162 00913 0	14	WMS-1	7 88502 09000 1	35
SG-8WP	0 91162 05201 3	34	TG4.540	0 91162 00759 4	15	WMS-3	7 88502 09020 9	35
SGL-8	7 88502 29470 6	5	TG4.540+2K	0 91162 00914 7	14	WMS-4	7 88502 09025 4	35
SGL-12	7 88502 29474 4	5	TG5.512	0 91162 00706 8	15	WMS-5	7 88502 09027 8	35
SGL-18	7 88502 29478 2	5	TG5.512+2K	0 91162 00915 4	14	WMS-6	7 88502 09028 4	35
SGL-24	7 88502 29480 5	5	TG5.518	0 91162 00760 0	15	WMS-7	7 88502 00029 1	35
SMP-HT-K-6H	7 88502 16477 1	48	TG5.518+2K	0 91162 00916 1	14	WMS-8	7 88502 09001 8	36
SQ-4	7 88502 01350 5	5	TG5.524	0 91162 00763 1	15	WS-1	0 91162 00040 3	24
SQ-8	7 88502 01360 4	5	TG5.524+2K	0 91162 00917 8	14	WS-3	0 91162 00501 9	23
SQ-12	7 88502 01370 3	5	TG7.016	0 91162 00707 5	15	WS-6	0 91162 00502 6	23
SQ-16	7 88502 01371 0	5	TG7.016+2K	0 91162 00920 8	14	WSM-9	7 88502 00840 2	21
SQ-20	7 88502 01375 8	5	TG7.024	0 91162 00767 9	15	WSM-12	7 88502 00841 9	21
SQ-24	7 88502 01372 7	5	TG7.024+2K	0 91162 00921 5	14	WVS-4	7 88502 00836 5	21
SQ-36	7 88502 01373 4	5	TG7.048	0 91162 00770 9	15	XC1	0 91162 00054 0	29
SQ-48	7 88502 01374 1	5	TG7.048+2K	0 91162 00924 6	14	XC-14PC	0 91162 00939 0	29
SQ-60	7 88502 01376 5	5	TGJ2.506	0 91162 00601 6	14	XC1-Set	0 91162 00041 0	29
SQJ-12	7 88502 19031 2	8	TGJ2.506+2K	0 91162 00900 0	14	XC2	0 91162 00050 2	29
STB-12	7 88502 19060 2	5	TGJ2.512	0 91162 00602 3	14	XC3	0 91162 00051 9	29
STB-18	7 88502 19062 6	5	TGJ2.512+2K	0 91162 00901 7	14	XC5	0 91162 00052 6	29
STB-24	7 88502 19061 9	5	TGJ2.518	0 91162 00603 0	14	XC5-2	0 91162 00062 5	29
STB-36	7 88502 19066 4	5	TGJ2.518+2K	0 91162 00902 4	14	XC7	0 91162 00053 3	29
SVH400XL	0 91162 02014 2	37	TGJ2.524	0 91162 00604 7	14	XCL2	0 91162 00068 7	29
TC4.008	0 91162 00777 8	15	TGJ2.524+2K	0 91162 00903 1	14	XCL2-Set	0 91162 00069 4	29
TC4.512	0 91162 00780 8	15	TGJ2.530	0 91162 00605 4	14	XCL5	0 91162 00070 0	29
TC5.512	0 91162 00783 9	15	TGJ2.530+2K	0 91162 00904 8	14	XCR-4PC	0 91162 00937 6	29
TC7.016	0 91162 00785 3	15	TGJ2.536	0 91162 00606 1	14	XCRU3	0 91162 00058 8	29
TC014-01G	7 85401 50128 7	46	TGJ2.536+2K	0 91162 00905 5	14	XCRU5	0 91162 00059 5	29
TC014-05G	7 85401 50640 4	46	TGK4.516	0 91162 00708 2	15	XM3	0 91162 01001 3	29
TC016-01G	7 85401 60128 4	46	TGK4.516+2K	0 91162 00925 3	15	XM5	0 91162 01002 0	29
TC016-05G	7 85401 60640 1	46	TGK4.524	0 91162 00710 5	15	XM7	0 91162 01003 7	29
TG4.008	0 91162 00704 4	14	TGK4.524+2K	0 91162 00926 0	15	XM10	0 91162 01004 4	29
TG4.008+2K	0 91162 00906 2	14	TGK4.540	0 91162 00712 9	15	XV3-50	0 91162 00048 9	28
TG4.012	0 91162 00751 8	14	TGK4.540+2K	0 91162 00927 7	15	XV5-100	0 91162 00049 6	28
TG4.012+2K	0 91162 00907 9	14	TGK4.550	0 91162 00713 6	15	XV5-170	0 91162 00073 1	28
TG4.016	0 91162 00752 5	14	TGK4.550+2K	0 91162 00928 4	15			
TG4.016+2K	0 91162 00908 6	14	TGK4.579	0 91162 00716 7	15			
TG4.024	0 91162 00753 2	14	TGK4.579+2K	0 91162 00929 1	15			
TG4.024+2K	0 91162 00909 3	14	TK-6	0 91162 05502	23 & 37			
TG4.512	0 91162 00703 7	15	TSC4.516	0 91162 00789 1	6			
TG4.512+2K	0 91162 00910 9	14	UK3.006	0 91162 00668 9	37			
TG4.518	0 91162 00754 9	15	UK3.012	0 91162 00669 6	37			
TG4.518+2K	0 91162 00911 6	14	UK3.024	0 91162 00670 2	37			
TG4.524	0 91162 00757 0	15	VAC-6	0 91162 00570 5	22			
TG4.524+2K	0 91162 00912 3	14	VAD	7 88502 00730 6	38			
TG4.530	0 91162 00758 7	15	VAS-23	0 91162 00556 9	22			



## 1. BESSEY® General Cautions & Warnings

**PRICING:** Retail prices of our products can change at any time as they are impacted by a wide range of business factors (including transportation, staffing, local /regional taxes and other overhead expenses). Your distributor incurs these expenses in doing business in your community.

**PRODUCT INFORMATION:** BESSEY® Tools North America reserves the right to alter technical specifications at any time. Some product specifications may vary from region to region to meet the requirements of the international marketplace. Errors and omissions excepted, BESSEY® believes that to the best of its knowledge the product illustrations and descriptions provided in the current BESSEY® catalog are accurate. However, such descriptions and illustrations are for the sole purpose of identification, and do not express or imply any warranty or condition that the products are merchantable or fit for a particular purpose or that the products will necessarily conform to the illustrations or descriptions. The customer is solely responsible for reliance on, or use of, any information, and for the use or application of any product. BESSEY® expressly disclaims any liability for direct, indirect, consequential or incidental damages in all events. In addition, all claims for damages, losses and causes of action shall be limited to the purchase price paid for the products in question. Note: "Clamping Force" is an estimation (nominal info.)

**CAUTION:** Clamping tools are not suitable for lifting, pulling or transporting. Improper use may lead to personal injuries or material damages. Clamping tools should only be clamped manually and without the use of any auxiliary tools or other devices. Please also see website for further information.

**CAUTION:** Cutting Technology

Always wear appropriate protection including goggles and gloves while working. Sheared parts may injure workers and bystanders. Disconnect the power supply while working on electrical devices to avoid the risk of electric shock. Always ensure the cutting direction while using snips, knives and cutters is away from your body. Only use original replacement parts whenever required. Tools should only be used manually without using any auxiliary tools. Improper use may lead to personal injuries, material damages, personal injuries or even death. Please also see website for further information.



## 2. BESSEY® Terms and Conditions - Distributor

**PRICING:** All prices, sizes and product specifications are subject to change without notice. Orders accepted only at price in effect at date of shipment.

**QUOTATIONS:** Quotations expire thirty days from date issued unless otherwise specified in writing.

**FREIGHT TERMS:** All prices are F.O.B. (BESSEY® US). Prepaid shipping is based on minimum invoice values and, are subject to change without notice. Please contact BESSEY® Tools North America for this information. All prepaid orders are shipped by ground transportation and using a provider of BESSEY®'s choice. If customers request another carrier, or another method of delivery, they must provide their own billing information in advance. Shipping errors must be reported within 10 days of product receipt.

**TERMS OF PAYMENT:** All orders are subject to BESSEY®'s credit approval and are due and payable thirty days (net) from the shipment date. Past due accounts are subject to interest at 1.5% per month (18% per annum).

**RETURN GOODS:** Products returned for credit will not be accepted. Goods are not returnable unless permission has previously been received in writing from our office. Returned goods are subject to the following conditions:

1. Incoming transportation charges, if not prepaid, will be deducted from credit memorandum.
2. All material returned must be found by BESSEY®, upon arrival, to be in first class saleable condition. If not, the cost of putting it in such condition will be deducted from any credit memorandum.
3. A restocking charge of 20% plus an additional 2% per each month elapsed since date of purchase, of the original invoice cost, will be deducted from any credit memorandum.
4. Products returned must be current products in the BESSEY® product offering.



## 3. BESSEY® Tools North America Warranty Policy

BESSEY® brand clamping products are warranted under a Limited Lifetime program. We warranty that the products will be free from defects in material and workmanship for the life of the tool or we will replace, refund or repair it; provided that this warranty does not cover any damage caused by abuse, misuse, improper handling, negligence, alteration or normal wear and tear. Other tools including but not limited to snips, c-clamps, some specialty clamps, magnets, bearing heaters and pyrometers are guaranteed for 1 year. For all products, BESSEY® Tools North America reserves the right to refuse either a repair or a replacement.

BESSEY® Tools North America makes no other warranties, express or implied, with respect to the tools or their suitability for specific applications. BESSEY® Tools North America neither assumes, nor authorizes any person to assume for it, any other warranty, or obligation express or implied. For a more detailed listing of Terms, Conditions and Warranty please contact BESSEY® Tools North America direct and toll-free at 1.800.828.1004.

BESSEY® Tools North America will, at its sole discretion, define if a product submitted for warranty evaluation is eligible for a warranty return and then, if eligible, offer to repair, refund or replace any defective product. To initiate such a claim, please call and request a return authorization number then, return all parts of the broken tool(s) plus a written warranty evaluation request (with contact information) in a freight prepaid format to BESSEY® Tools North America.

This warranty gives you specific legal rights. Please note: you may also have other rights, which could vary depending upon state, federal and provincial law.

For more information, email [info@besseytools.com](mailto:info@besseytools.com) or call 1-800-828-1004.

## 4. Return Procedures

**RETURN GOODS** – Purchased direct from a Tool Distributor: Please initiate returns of any sort with the distributor where the tool was purchased.

**RETURN GOODS** – Purchased direct from BESSEY® Tools: Products purchased directly from BESSEY® which are returned for credit (only permitted if incorrectly shipped or if the product is found to be defective upon receipt), warranty or repair will not be accepted unless permission has previously been received in writing from our office. Please contact BESSEY® at [info@besseytools.com](mailto:info@besseytools.com) to initiate a return. You may be asked for invoice numbers, packing slips or proof of delivery; please have this information ready.

Returned goods are subject to the following conditions:

1. Incoming transportation charges, if not prepaid, will be deducted from credit memorandum.
2. All material returned must be found by BESSEY®, upon arrival, to be in first class saleable condition. If not, the cost of putting it in such condition will be deducted from any credit memorandum.
3. A restocking charge of 20% plus an additional 2% per each month elapsed since date of purchase, of the original invoice cost, will be deducted from any credit memorandum.
4. Products returned must be current products in the BESSEY® product offering



## 5. Calprop Statement (North America)

Proposition 65 (formally titled "The Safe Drinking Water and Toxic Enforcement Act of 1986") is a California law that has been in effect since 1986 to promote clean drinking water and keep toxic substances that cause cancer and birth defects out of consumer products. It is administered by Cal/EPA's California Office of Environmental Health Hazard Assessment (OEHHA). Proposition 65 regulates substances listed by California as causing cancer or birth defects or other reproductive harm in two ways. The first regulatory arm of Proposition 65 prohibits businesses from knowingly discharging listed substances into drinking water sources, or onto land where the substances can pass into drinking water sources. The second regulatory arm of Proposition 65 prohibits businesses from knowingly exposing individuals to listed substances without providing a clear and reasonable warning.

BESSEY® branded products do not, to the best of our knowledge, expose individuals to harmful substances as listed by the Cal Prop 65 Legislation.



## 6. Contact Us

BESSEY® Tools North America  
 Tel: 1 519 621 7240  
 Fax: 1 519 621 3442  
 Toll free Customer Line: 1 800 828 1004

We welcome your feedback, and are happy to assist with your questions.



## 7. Downloads - See [www.besseytools.com](http://www.besseytools.com)

### SALES SHEETS

Produced over the years and continuously updated the BESSEY® sales sheets are a great snapshot of the tool, how it works and its vital statistics. Available as a PDF for easy downloads and for quick reading.



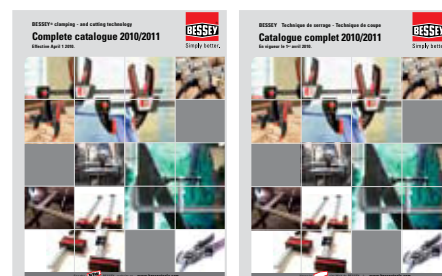
### CATALOGUE IMAGES

We quite often get requests for images to put into catalogs, articles and even for reference in working drawings in the field. Compiled into one handy location for your reference.



### BESSEY® PRESENTATIONS

#### CATALOGUES VIDEOS







Simply better.



**BESSEY® Tools North America**  
Telephone: 800.828.1004

**[www.besseystools.com](http://www.besseystools.com)**