

—LOCATION—



Head Office/Factory

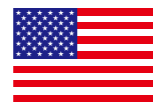
Soira 716-2, Kitatani,
Dazaifu-city, Fukuoka 818-0114
TEL:092-922-7161
FAX:092-922-7162

Osaka Sales Office

12F Shin-Osaka SONE Bldg.,
7-1-19 Nishinakajima,
Yodogawa-ku, Osaka 532-0011
TEL:06-6304-6668
FAX:06-6304-6485

Tokyo Sales Office

3F Tabata Fukuda Bldg.,
1-7-3 Higashitabata,
Kita-ku, Tokyo 114-0013
TEL:03-3895-6271
FAX:03-3895-8456



Nippon Magnetics USA, Inc.

20695 S. Western Ave., Suite 236
Torrance, CA 90501, USA
TEL:310-533-8290
FAX:310-533-8295

To order NMI products:

MAGNETIC SEPARATORS

Applied Magnetics Products
General Catalog





**MAGNETIC
SEPARATORS**

NIPPON MAGNETICS



Deliver Something Small and Bring a Great Joy to Our Customer

Our company was founded in 1943 as Haramaki Iron Works. Later, the magnetic sector of the former Haramaki Machine Works was separated from the original company and Nippon Magnetics was established in 1983. Since then, we have been involved in research and development over 30years, and have developed and manufactured permanent magnet and applied electromagnetic devices that isolate iron powder and aluminum.

Our founding principles are “deliver something small and bring great joy to our customers” . Food, Powder and Recycling are the three pillars of our work.

To meet the diverse needs of our customers in various industries, we utilize our professional skills to challenge all possibilities.

Our company was previously only capable of separating iron and aluminum.

However, we are currently capable of developing more sophisticated technology by utilizing static and eddy current.

For example, we are able to separate aluminum and other materials from crushed car parts, and development of such techniques were actualized through the cooperation and suggestions from our customers.

“Protection of environment” is the top priority in conducting our business, and our work begins from where we live and

further broaden our perspective in the global arena. We strive to walk into new fields hand in hand with our customers.

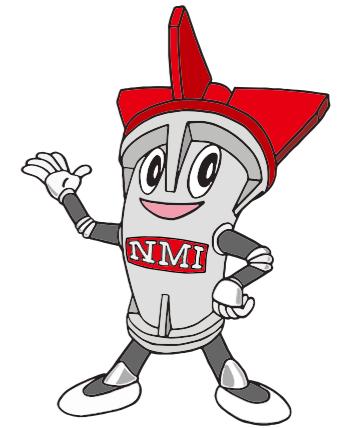
From solid materials to particle, from millimeters to microns, and even inside the world of nanotechnology -- we would like to support our customers by providing a magnet applied technology and fine-tuned services that are tailored to the needs of individual customers.

Nippon Magnetics,Inc.
President and CEO Keiji Haramaki



INDEX

Magnetic Applied Equipment General Catalog
MAGNET SEPARATORS



No.	Product Name	Model	Page
1	Tube Magnet		1-4
2-6	Grate Magnet		4-6
7-9	Magnetic Strainer	SMS,MS	7
10	Magnet Plate	HP,RHP	8
11-12	Electromagnetic Separator (Dry Type)	CG	9-10
13-14	Electromagnetic Separator (Wet Type)	CS	11-12
15	Stainless Steel Separator	HGMP	13
16	Magnetic Pulley	WN,RWN	14
17-18	Drum-Type Magnetic Separator	ENS,RENS	15-16
19-21	Suspension Type Permanent Magnetic Separator	PUF	17-18
22-25	Suspension Type Electromagnetic Separator	HUF,NUF,HLS	19-20
26	Eddy Current Separator	ALS	21-22
27-29	Eddy Current Separator System	Shigen-Ka-Kun	23-24
30	Can Separator	ABC	25
31	Press Machine	ACP	26
32-35	Lifting Magnet	HL,HDL	27-32
36	Maghammer	SIC	33-34
37	Electrostatic Corona Separator	ESCI	35
38-43	Other Magnetic Separators		36-37

1 Tube Magnet

NMI product Tube magnet

Features Easy to install. Remove the magnetic metal.

Specifications

- ① It can also be used in liquid.
- ② It can be manufactured with the desired dimensions.
- ③ It is also possible to coat the surface of the pipe.



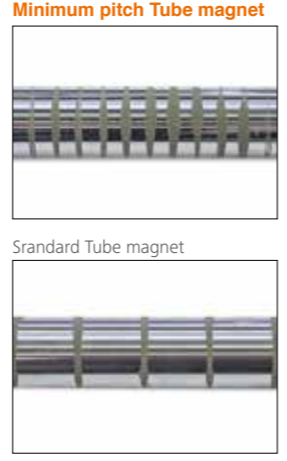
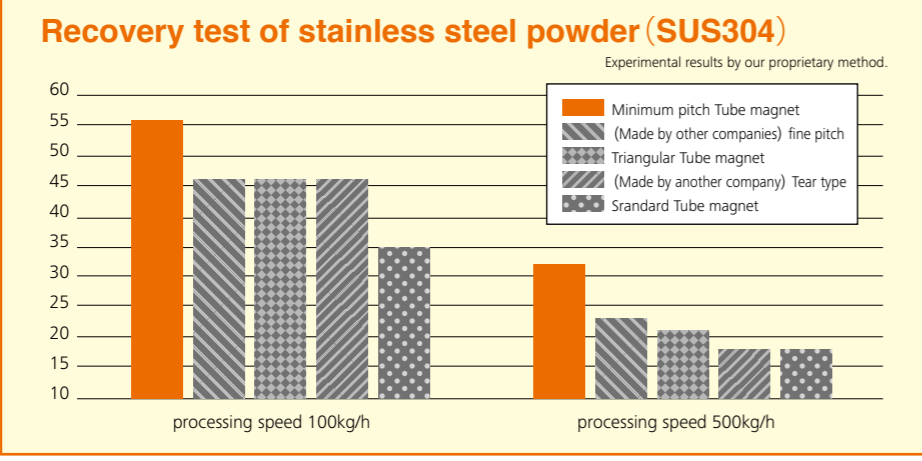
Model	Specifications				
Tube Magnet	Caliber	Magnetic flux density	Material	Service condition	Using magnets
15000Gauss	φ24.9	1.5T(15,000G)	SUS316L	80°C	Nd
14000Gauss	φ24.2	1.4T(14,000G)	SUS304	100°C	
12000Gauss	φ25	1.2T(12,000G)		150°C	
3000Gauss	φ25	0.3T(3,000G)	SUS316L	150°C	Ferrite
Heat resistant Tube magnet	φ24.2	1.1T(11,000G)	SUS316L	200°C	Sm-Co
Minimum pitch Tube magnet	φ24.2	1.0T(10,000G)		100°C	Nd
Suspended Tube Magnet	□60×60	1.0T(10,000G)	SUS304	100°C	
Triangular Tube magnet	△(25×30)	1.2T(12,000G)		100°C	
Titanium pipe Tube Magnet	φ25.4	1.2T(12,000G)	Titanium		
1.7 Tesla Tube magnet	φ50	1.7T(17,000G)	SUS316L	80°C	

※The magnetic force displayed by the measuring instrument may be different.

Stainless can be attracted by magnet?
 Food processing factories require stainless steel for almost all production lines, so the metal contaminates are generally stainless material. Nonmagnetic austenite family, SUS304 or 316L can be attracted by magnets if shocked (cutting, shredding, twisting, grinding, pressing buffing and polishing), welding or rubbing are involved. Deformation will also cause magnetic attraction.

Minimum pitch Tube magnet Ideal for removing stainless steel powder in fine powder ingredients!

As the size of the magnetic metal becomes smaller, it becomes more difficult to attract magnetic metal to the magnet. It is possible to increase the recovery rate of weak magnetic metals by narrowing the magnetic poles.

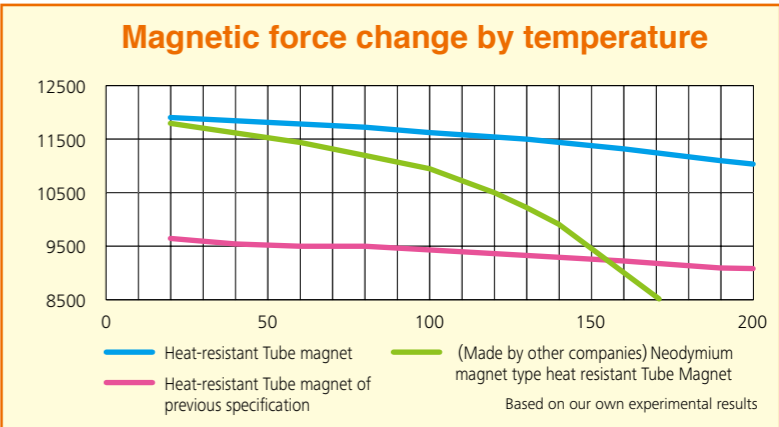
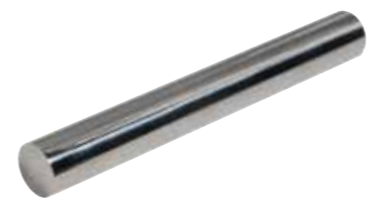


Specifications				
Size	Magnetic flux density	Material	Service condition	Using magnets
φ24.2×100mm	1.0T (10,000G)	SUS304 SUS316L	100°C	Nd
φ24.2×150mm				
φ24.2×200mm				
φ24.2×250mm				
φ24.2×300mm				
φ24.2×350mm				
φ24.2×400mm				
φ24.2×500mm				

Is not it better if the magnetic force is strong?
 The attractive force acts on weak magnetic metals is at the magnetic poles of the magnet bar surface. It is difficult to attract weak magnetic metals at portions of the magnetic bar other than the magnetic poles. Therefore, it is better to increase the number of poles versus increasing the magnetic flux strength.

Heat-resistant Tube magnet

Heat resistant magnet using Samarium-Cobalt Magnets can keep high magnetic force even in high temperature environments.



■ Type 1.1Tesla (Ø24.2)

Specifications				
Size	Magnetic flux density	Material	Service condition	Using magnets
φ24.2×100mm	1.1T (11,000G)	SUS304 SUS316L	200°C	Sm-Co
φ24.2×150mm				
φ24.2×200mm				
φ24.2×250mm				
φ24.2×300mm				
φ24.2×350mm				
φ24.2×400mm				
φ24.2×500mm				

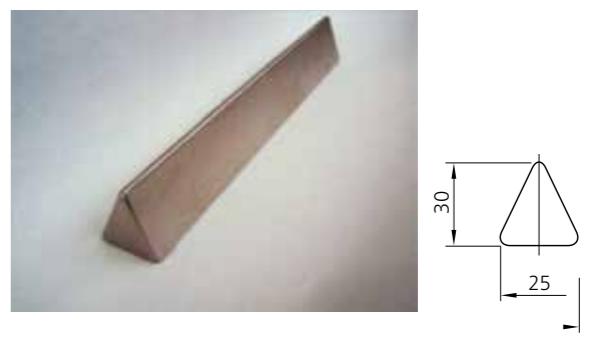
※The magnetic force displayed by the measuring instrument may be different.

■ Type 1.0Tesla (Ø25)

Specifications				
Size	Magnetic flux density	Material	Service condition	Using magnets
φ25×100mm	1.0T (10,000G)	SUS304 SUS316L Titanium	200°C	Sm-Co
φ25×150mm				
φ25×200mm				
φ25×250mm				
φ25×300mm				
φ25×350mm				
φ25×400mm				
φ25×500mm				

Triangular Tube magnet It has an effect on powder raw materials accumulated on Tube magnet.

Specifications				
Size	Magnetic flux density	Material	Service condition	Using magnets
△(25×30)×100mm	1.2T (12,000G)	SUS304	100°C	Nd
△(25×30)×150mm				
△(25×30)×200mm				
△(25×30)×250mm				
△(25×30)×300mm				
△(25×30)×350mm				
△(25×30)×400mm				
△(25×30)×500mm				



※The magnetic force displayed by the measuring instrument may be different.

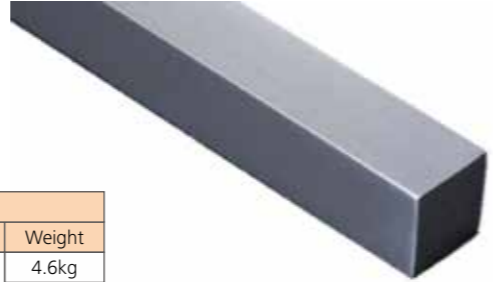


Suspended Tube Magnet

It is suspended in the range of 1 to 10 mm, and it adsorbs magnetic metal.



The bar magnet has a strong surface magnetic force, but the magnetic flux line does not spread far. On the other hand, since Suspended Tube Magnet can maintain a strong magnetic force even if the distance is long, it is possible to adsorb far magnetic metal.

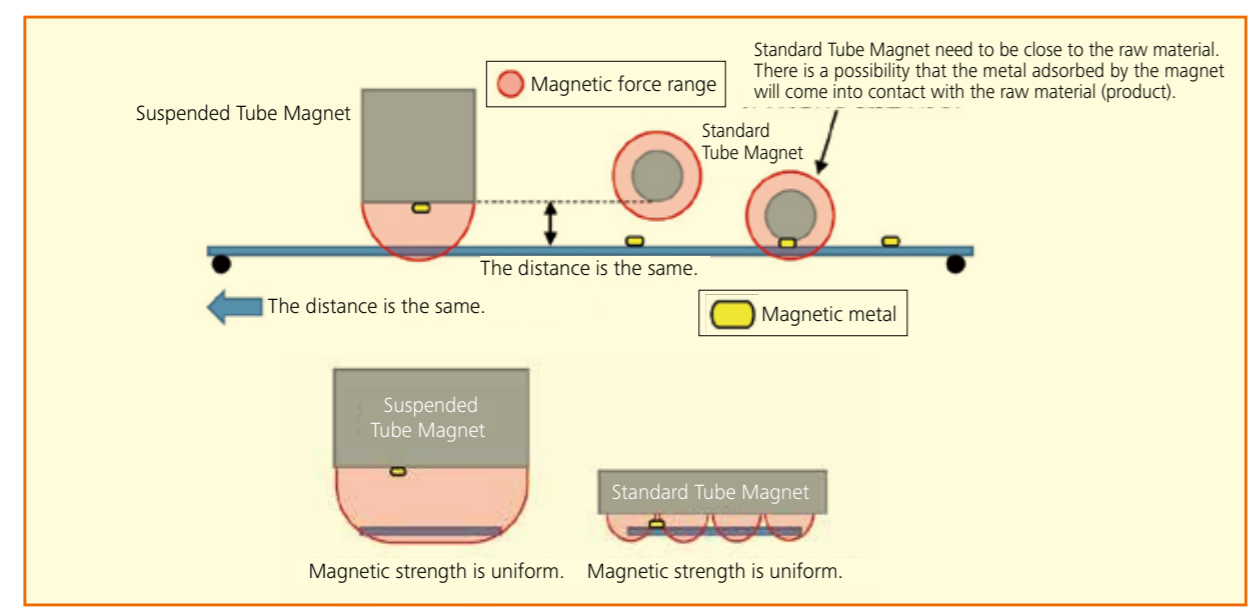
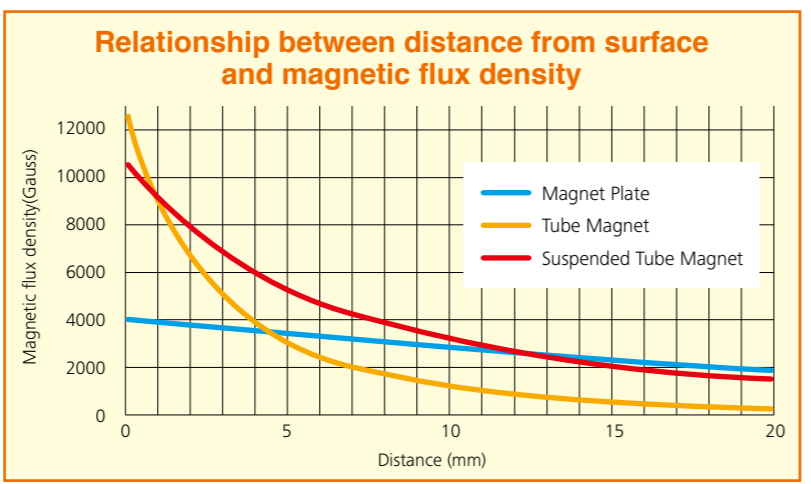


Specifications						
Size	Magnetic flux density	Magnetic force at 5 mm distance	Material	Service condition	Using magnets	Weight
□60×200mm	1.0T (10,000G)	0.5T (5,000G)	SUS304	100°C	Nd	4.6kg
□60×250mm						5.8kg
□60×300mm						7kg
□60×350mm						8kg
□60×400mm						9kg
□60×500mm						11.5kg

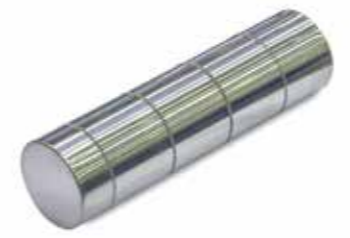
※The magnetic force displayed by the measuring instrument may be different.

Developed for the purpose of suspending the magnet and using it.

Unlike conventional bar magnets, there is no magnetic pole gap with respect to the flow direction of raw material. Therefore, it is easy to be adsorbed by the magnet regardless of where the magnetic metal flows.



1.7 Tesla Tube Magnet



Type: φ50×200L
Stainless steel fines from grinding are attracted

- Usage** → Ideal for recovering weak magnetic metal.
- Features** → Magnetic flux density on pipe surface 1.7 TESLA.

Specifications				
Size	Magnetic flux density	Material	Service condition	Using magnets
φ50×140mm	1.7T (17,000G)	SUS316L	80°C	Nd
φ50×180mm				
φ50×230mm				
φ50×270mm				
φ50×320mm				

Titanium pipe Tube Magnet



Specifications				
Size	Magnetic flux density	Material	Service condition	Using magnets
φ25.4×150mm	1.2T (12,000G)	Titanium	100°C	Nd
φ25.4×200mm				
φ25.4×250mm				
φ25.4×300mm				
φ25.4×350mm				

※It is also possible to produce with minimum pitch.9000Gauss (0.9Tesla)

2 Grate Magnet

- Usage** → Grate type magnet can be placed on the bottom of the hopper, in a liquid or suspended in the material flow.
- Features** →

1. We manufacture grate magnets with requested number and configuration based on the raw material.
2. Installation of bar magnet can be arranged upon request including the weld, screws drop type etc.
3. Double Tube type is also available for easy cleaning.
4. We design and manufacture in different sizes according to the dimensions of the installation area or your preference.

- Specifications** →
1. You can select the type of bar magnet. (See specifications of magnetic bars)
 2. Material: SUS304, SUS316L, Titanium etc.



Tube Magnet

Grate Magnet

Magnetic Strainer

Magnet Plate

Electromagnetic Separator (Dry Type)

Electromagnetic Separator (Wet Type)

Stainless Steel Separator

Magnetic Pulley

Drum-Type Magnetic Separator

Suspension Type Permanent Magnetic Separator

Suspension Type Electromagnetic Separator

Eddy Current Separator

Eddy Current Separator System

Can Separator

Press Machine

Lifting Magnet

Maghammer

Electrostatic Corona Separator

Other Magnetic Separators

- Tube Magnet
- Grate Magnet**
- Magnetic Strainer
- Magnet Plate
- Electromagnetic Separator (Dry Type)
- Electromagnetic Separator (Wet Type)
- Stainless Steel Separator
- Magnetic Pulley
- Drum-Type Magnetic Separator
- Suspension Type Permanent Magnetic Separator
- Suspension Type Electromagnetic Separator
- Eddy Current Separator
- Eddy Current Separator System
- Can Separator
- Press Machine
- Lifting Magnet
- Maghammer
- Electrostatic Corona Separator
- Other Magnetic Separators

3 Double Tube Grate Magnet (Surface 10000 Gauss Type)

Features
 Guarantee powerful 10,000 surface gauss. Drastic improvement from typical 8,000 surface gauss, Easy cleaning and maintain over 10,000 surface gauss. Contribution of superior quality control to your production.

- Specifications**
1. Surface gauss: 14,000 gauss
 2. Outer pipe OD: ϕ 26mm
 3. Pipe Material: SUS316L

Powerful 14,000 gauss tube magnet creates over 10,000 surface gauss on the double tube surface.



4 Rotary Magnet

Usage
 Rotating tube magnets separate foreign objects and avoid clogging. Ferrule fitting is also available.

Specifications

Flange size	Magnet size	Number of magnets
100A	140L	5pcs
125A	160L	
150A	185L	6pcs
200A	240L	8pcs
250A	290L	12pcs
300A	340L	



5 Automatic Cleaning Grate Magnet

Usage
 Automatic cleaning system will reduce or avoid manpower to clean the magnet tube surface.



- Tube Magnet
- Grate Magnet**
- Magnetic Strainer
- Magnet Plate
- Electromagnetic Separator (Dry Type)
- Electromagnetic Separator (Wet Type)
- Stainless Steel Separator
- Magnetic Pulley
- Drum-Type Magnetic Separator
- Suspension Type Permanent Magnetic Separator
- Suspension Type Electromagnetic Separator
- Eddy Current Separator
- Eddy Current Separator System
- Can Separator
- Press Machine
- Lifting Magnet
- Maghammer
- Electrostatic Corona Separator
- Other Magnetic Separators

6 Grate Magnet with Casing

Usage
 Easy installation with connection flange or ferrule. Quick cleaning with pull out grate magnets.

- Features**
1. Available in multi-layer configuration resulting in superior efficiency.
 2. Custom made fit to designated location.
 3. Double tubing option ensures quick cleaning.

- Specifications**
1. You can select the type of bar magnet. (See tube magnet design)
 2. Casing Material: SUS304, SUS316
 3. Flange or other connections available.



Post size A (mm)	Magnet size	Quantity of tube magnets	Casing height (mm)
150A (ϕ 165.2)	190L	2state type • 7pcs (4+3)	330
		3state type • 10pcs (3+4+3)	390
		4state type • 14pcs (3+4+3+4)	450
200A (ϕ 216.3)	240L	2state type • 9pcs (5+4)	330
		3state type • 13pcs (4+5+4)	390
		4state type • 18pcs (4+5+4+5)	450
250A (ϕ 267.4)	290L	2state type • 11pcs (6+5)	330
		3state type • 16pcs (5+6+5)	390
		4state type • 22pcs (5+6+5+6)	450
300A (ϕ 318.5)	340L	2state type • 13pcs (7+6)	330
		3state type • 19pcs (6+7+6)	390
		4state type • 26pcs (6+7+6+7)	450

※We accept custom design and respond to your requests on change of number of tube magnets.

Other types of Grate Magnet with Casing



7 Magnet Strainer Model:SMS (For Food Grade)

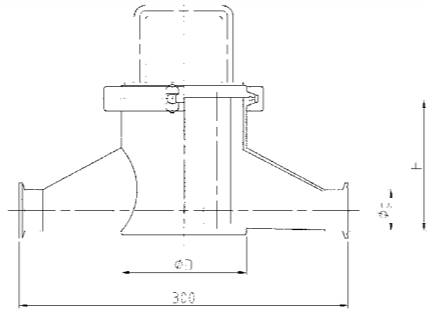
Usage
Best solution for separating ferrous materials (iron particles and stainless powder) from liquid or slurry material.

- Features**
1. Flat bottom design traps contaminants
 2. Food grade clamp design
 3. Double tubing available for easy cleaning
 4. Wide variety of tube designs and materials

- Specifications**
1. Flange and other fittings available
 2. SUS304, SUS316L available with mirror finish inside and outside
 3. Includes clamp band and ferrule fitting as needed

Model	Nominal diameter	φd (mm)	H (mm)	φD (mm)	Normal Pressure	Quantity of tube magnets
SMS-1	1S	25.4	120	114.3	0.7MPa	5pcs
SMS-1.5	1.5S	38.1				
SMS-2	2S	50.8				
SMS-2.5	2.5S	63.5	160	139.8		7pcs
SMS-3	3S	76.3				
SMS-3.5	3.5S	89.1				

※Custom made can be arranged.

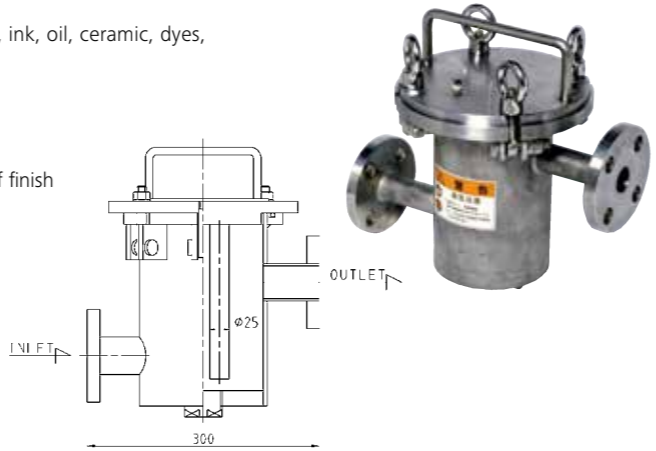


8 Magnet Strainer Model: MS

Usage
Superior results of high viscosity materials in food, chemical, paint, ink, oil, ceramic, dyes, sugar, pulp in liquid or slurry state.

- Specifications**
1. Wide variety of tube designs and materials available
 2. Available with flange or ferrule fittings
 3. Standard acid cleaning finish inside and out. Also available in buff finish
 4. SUS304 or SUS316L as standard materials

Model	Frange	Normal Pressure	Quantity of tube magnets
MS-25A	25AFrange	1.0MPa	5pcs
MS-40A	40AFrange		5pcs
MS-50A	50AFrange		7pcs
MS-65A	65AFrange		7pcs
MS-80A	80AFrange		7pcs
MS-100A	100AFrange		7pcs



9 Sanitary Pipe Strainer Model: SP

- Usage**
1. In-line magnetic filter disassembles for easy cleaning
 2. Light and compact with ferrule fittings for easy installation

Specifications SUS304 or SUS316L as standard materials

Model	Nominal diameter	φd (mm)	Normal Pressure	Weight
SP-1	1S	25.4	0.7MPa	5kg
SP-1.5	1.5S	38.1		
SP-2	2S	50.8		



Available custom made design.



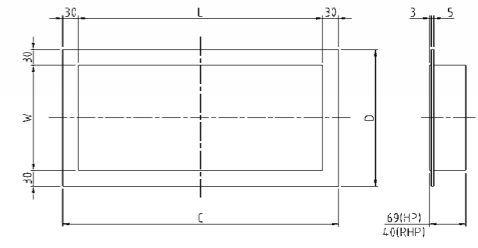
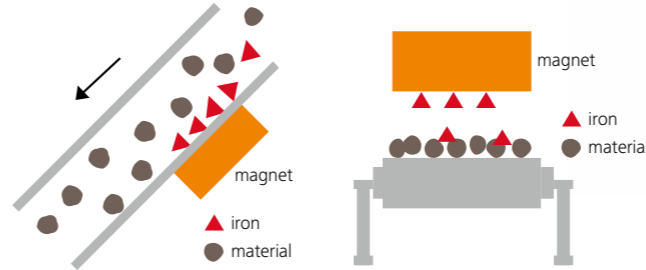
10 Magnet Plate Model: HP·RHP

Usage
Wide range of use over or under the shooter, hopper, duct and conveyer for dry or wet condition.

- Features**
1. Complete Stainless plate shielding for even dry condition use.
 2. Available custom design for flange and any type of connections.
 3. Available barrier stop design higher attraction force.

- Specifications**
1. Materials in SUS 304 and SUS 316.
 2. Model HP with ferrite magnet or RHP with neodymium magnet.
 3. Available samarium cobalt magnet for high 300 degree C use.

Type	Standard type	Barrier-stop type
Ferrite (HP type)	1,500Gauss	4,000Gauss
Neodymium (RHP type)	4,500Gauss	10,000Gauss



Ferrite (HP type)

Model	L (mm)	W (mm)	C (mm)	D (mm)	Weight
HP-115	159	131	219	191	10kg
HP-120	210		270		12kg
HP-125	261		321		15kg
HP-130	312		372		18kg
HP-135	363		423		21kg
HP-140	414		474		24kg
HP-145	465	525	26kg		
HP-150	516	576	29kg		
HP-155	566	626	32kg		
HP-160	617	677	35kg		
Model	L (mm)	W (mm)	C (mm)	D (mm)	Weight
HP-215	159	200	219	260	14kg
HP-220	210		270		18kg
HP-225	261		321		22kg
HP-230	312		372		27kg
HP-235	363		423		31kg
HP-240	414		474		35kg
HP-245	465	525	39kg		
HP-250	516	576	43kg		
HP-255	566	626	48kg		
HP-260	617	677	52kg		
Model	L (mm)	W (mm)	C (mm)	D (mm)	Weight
HP-315	159	275	219	335	16kg
HP-320	210		270		22kg
HP-325	261		321		29kg
HP-330	312		372		36kg
HP-335	363		423		42kg
HP-340	414		474		49kg
HP-345	465	525	56kg		
HP-350	516	576	63kg		
HP-355	566	626	69kg		
HP-360	617	677	76kg		

Neodymium (RHP type)

Model	L (mm)	W (mm)	C (mm)	D (mm)	Weight
RHP-115	159	131	219	191	8kg
RHP-120	210		270		9kg
RHP-125	261		321		11kg
RHP-130	312		372		14kg
RHP-135	363		423		16kg
RHP-140	414		474		18kg
RHP-145	465	525	20kg		
RHP-150	516	576	22kg		
RHP-155	566	626	24kg		
RHP-160	617	677	27kg		
Model	L (mm)	W (mm)	C (mm)	D (mm)	Weight
RHP-215	159	200	219	260	11kg
RHP-220	210		270		14kg
RHP-225	261		321		17kg
RHP-230	312		372		21kg
RHP-235	363		423		24kg
RHP-240	414		474		27kg
RHP-245	465	525	30kg		
RHP-250	516	576	34kg		
RHP-255	566	626	36kg		
RHP-260	617	677	40kg		
Model	L (mm)	W (mm)	C (mm)	D (mm)	Weight
RHP-315	159	275	219	335	12kg
RHP-320	210		270		17kg
RHP-325	261		321		22kg
RHP-330	312		372		27kg
RHP-335	363		423		32kg
RHP-340	414		474		37kg
RHP-345	465	525	43kg		
RHP-350	516	576	47kg		
RHP-355	566	626	52kg		
RHP-360	617	677	58kg		

11 Electromagnetic Separator Model: CG

Fine iron powder from raw material!

Usage
Model CG is designed to remove fine iron powders from dry powdered materials to get the best results in food, chemical, plastic, ceramic, medical industries and many other.

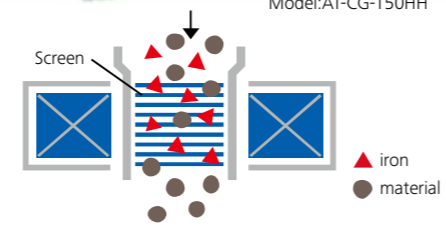
- Features**
1. Electro-magnetized screens capture fine iron particles in the micron range
 2. Vibration motors ensure effective and smooth flow of material through the screens
 3. Rate of feed material is controlled

- Specifications**
1. Screen pitch can be selected for the best results
 2. Eight types of screens are available to achieve the best results



Model:AT-CG-150HH

CG is designed to get superior results from dry material.
It is difficult to separate iron fines with a grain size less than 0.1mm due to particle attraction and adhesion to the separator. CG directs the magnetic flux to the center of the unit and enhances higher flux density without magnetic leakage. Vibration to filters ensures effective removal of iron during the cleaning process therefore improving screen flow rate.



Specifications	CG			CG-H			CG-HH			CG-HHH		
	150-1	250-1	300-1	150H-1	250H-1	300H-1	150HH-1	250HH-1	300HH-1	150HHH-1	250HHH-1	300HHH-1
Magnetization power (kw)	0.49	0.68	0.81	2.17	2.9	3.3	4.12	5.39	6.09	6.11	8.1	9.53
Flux density (not screen) ^{*1}	800GAUSS			1,700GAUSS			2,400GAUSS			3,300GAUSS		
Flux density (on the screen) ^{*2}	6,000	6,500	6,500	11,500	11,500	11,000	13,500	14,500	13,500	15,500	16,000	15,500
Number of screens ^{*3}	13	11	11	15	13	13	18	16	16	20	17	17
Weight (kg)	300	400	450	800	1,200	1,300	1,500	1,700	1,900	2,000	2,500	2,800

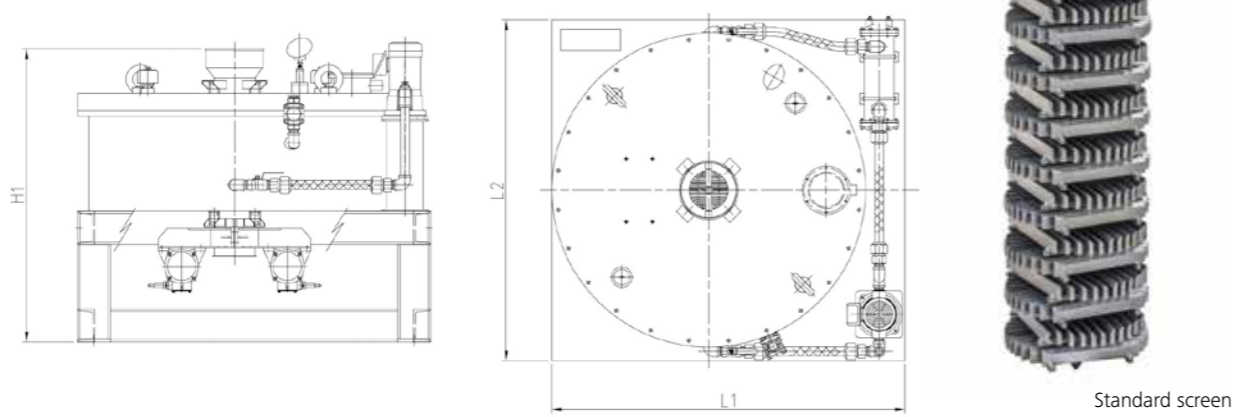
The magnetic flux density in the above table is the measured value or analytical value measured when the coil is at room temperature.
*1. Magnetic flux density with no elements. (Maximum value)
*2. Maximum magnetic flux density when using standard screen. (Analysis value) There is a weakness depending on the place to measure.
*3. Maximum number when setting standard screen.

- Screen**
- ① Standard screen : interval 5mm, 7mm, 10mm, 12mm, 15mm, 20mm
 - ② Honeycomb screen : Up to 75 pcs can be set. Patent number; 5671755
 - ③ Ball type
- * It is also possible to select various magnetic elements.



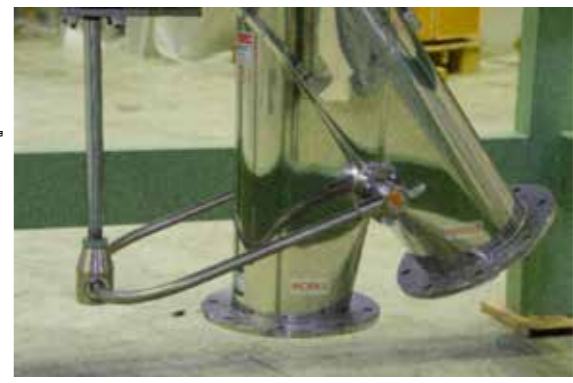
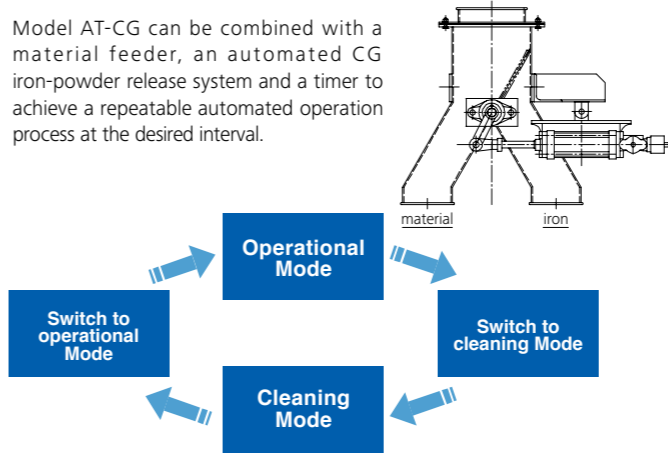
External dimensions of major equipment

Model	L1	L2	H1
CG-150HHH	1,350	1,400	1,090
CG-250HHH	1,500	1,550	1,090
CG-300HHH	1,550	1,600	1,080



AT-CG (Automated dumper system)

Model AT-CG can be combined with a material feeder, an automated CG iron-powder release system and a timer to achieve a repeatable automated operation process at the desired interval.



Dumper model: PowChange (PC-MA)

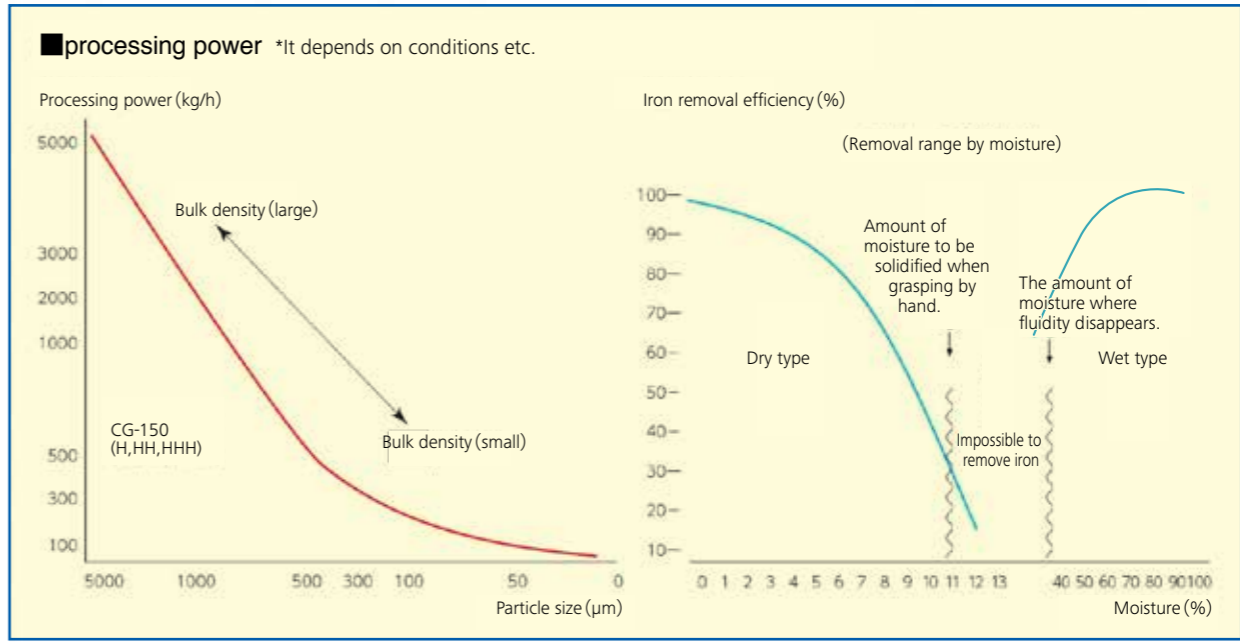
12 Electromagnetic Separator Model: CG-X (High magnetic force type)

- Features**
1. Magnetic Field (With screen set) over 18,000 gauss.
 2. Oil Controller improves cooling ability.

Specifications

Specifications	CG-X		
	150X-1	250X-1	300X-1
Magnetization power(kw)	13.4	17.5	19.7
Flux density (not screen) ^{*1}	6,000GAUSS		
Flux density (on the screen) ^{*2}	18,500	19,500	18,500
Number of screens ^{*3}	20	17	17
Weight (kg)	3,000	3,800	4,300

The magnetic flux density in the above table is the measured value or analytical value measured when the coil is at room temperature.
*1. Magnetic flux density with no elements. (Maximum value)
*2. Maximum magnetic flux density when using standard screen. (Analysis value) There is a weakness depending on the place to measure.
*3. Maximum number when setting standard screen.

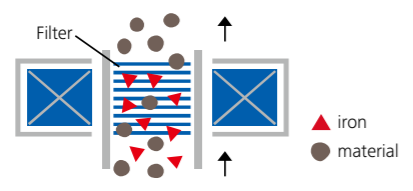


13 Electromagnetic Filter Model: CS

Fine Iron Powder Separation from Any Type of Wet Materials!!

Usage
 Model CS is designed to separate fine iron powder in wet materials by electromagnetized filters. It can handle relatively high temp. materials and also slurries.
 Fine iron powder can be removed by passing through multiple high efficiency magnetic filters (picture below) Also, the pitch size of magnetic filter can be changed for best results.

Features
 Turning off the excitation current makes filter cleaning simple and easy.



CS-150HHH

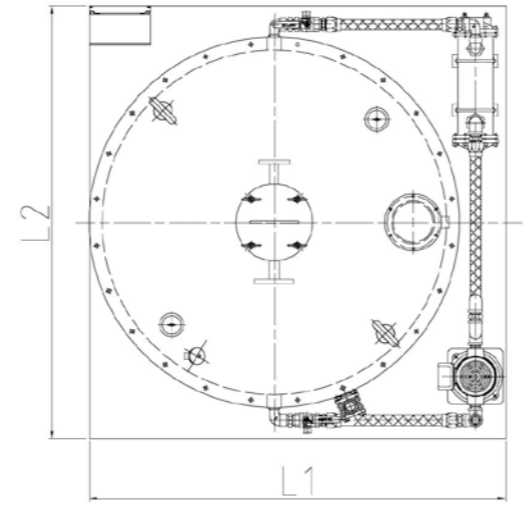
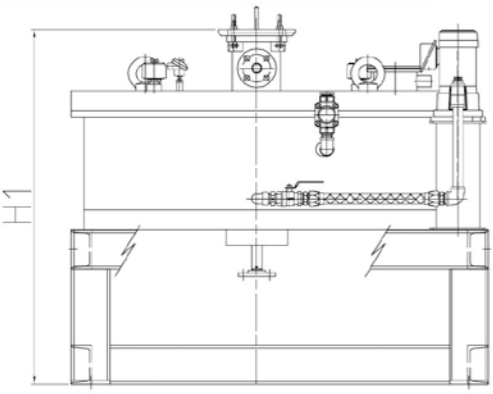
Specifications	CS			CS-H			CS-HH			CS-HHH		
	150-1	250-1	300-1	150H-1	250H-1	300H-1	150HH-1	250HH-1	300HH-1	150HHH-1	250HHH-1	300HHH-1
Magnetization power (kw)	0.49	0.68	0.81	2.17	2.9	3.3	4.12	5.39	6.07	6.11	8.1	9.53
Flux density (not screen)*1	800GAUSS			1,700GAUSS			2,400GAUSS			3,300GAUSS		
Flux density (on the screen)*2	8,000	7,400	7,000	10,500	10,000	9,900	11,000	11,000	11,000	12,000	12,000	12,000
Number of screens*3	27	27	27	32	32	32	37	37	37	41	41	42
Weight (kg)	300	400	450	800	1,200	1,300	1,500	1,700	1,900	2,000	2,500	2,800

The magnetic flux density is at room temperature.
 *1. Magnetic flux density with no elements (Maximum value)
 *2. Maximum magnetic flux density when using the standard filter. (Analysis value) There is a weakness depending on the measurement point.
 *3. Maximum number with standard filter.

Filter
 ① Standard filter: Regular, Large, XL
 ② Ball type
 *It is also possible to select various magnetic elements.

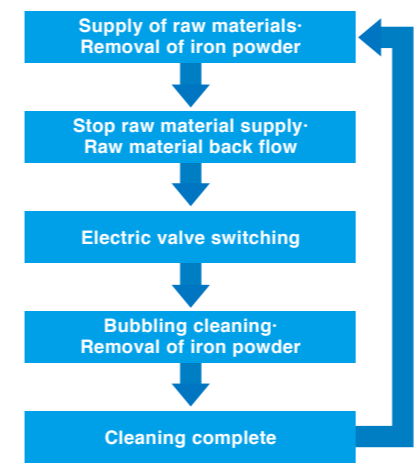
External dimensions of major equipment.

Model	L1	L2	H1
CS-150HHH-1	1,350	1,400	1,150
CS-250HHH-1	1,500	1,550	1,150
CS-300HHH-1	1,550	1,600	1,140



With automatic cleaning device (Type:AT-CS)

Automatic wash-out of captured iron contaminate



Continuous processing is possible by using two units in parallel. (Type:FAT-CS)



AT-CS-150

14 Highest Grade Electromagnetic Filter Model:CS-X

Best separation results for weak magnetic material and find iron powder!!

- Features**
1. Magnetic metal of several microns can be removed
 2. Improved cooling efficiency
 3. Automatic washing option available
 4. Optional chiller unit suppresses current reduction

- Specifications**
1. Magnetic elements selected according to application
 2. Regular, Large, XL and Ball type filters available

Specifications	Model	CS-X		
		150X-1	250X-1	300X-1
Magnetization power (kw)		13.4	17.5	19.7
Flux density (not screen)*1		6,000GAUSS		
Flux density (on the screen)*2		20,000GAUSS		
Number of screens*3		41	41	42
Size	L1	1,450	1,600	1,650
	L2	1,570	1,800	1,900
	H1	1,250	1,300	1,300
Weight (kg)		3,000	4,000	4,500

The magnetic flux density is at room temperature.
 *1. Magnetic flux density with no elements (Maximum value)
 *2. Maximum magnetic flux density when using the standard filter. (Analysis value) There is a weakness depending on the measurement point.
 *3. Maximum number with standard filter.



Model:CS-250X
 * Optional customs paint is available.

15 Stainless Steel Separator Model:HGMP

For removal of stainless flakes separated from processed stainless products.

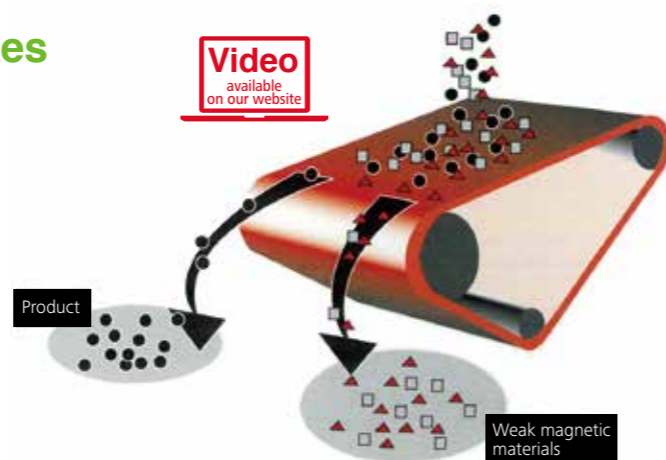
Usage
HGMP is designed to generate the high-intensity magnetic force to remove weak magnetic materials, such as stainless nails, bolts and nuts as well as stainless flakes from food products, powdered materials, wood chips and others.

- Features**
1. Superior 12,000 gauss on the drum surface.
 2. High intensity permanent magnetic pulley
 3. Magnets make instantaneous separation

- Specifications**
1. Available pulley OD size of 70 and 135mm
 2. Case optional
 3. Vibratory feeder optional

Pulley diameter (mm)	Belt width (mm)	Pulley width (mm)
φ70	250	265
	300	315
	350	365
	400	415
	450	465
	500	520
	550	570
	600	620
φ135	650	670
	750	765

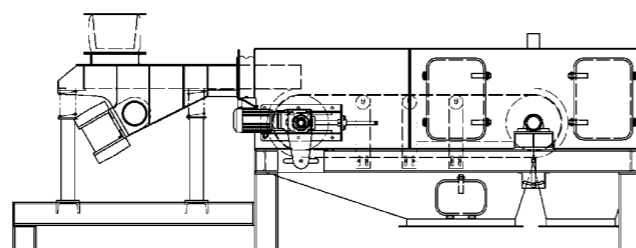
Pulley diameter (mm)	Belt width (mm)	Pulley width (mm)
φ135	250	300
	300	350
	350	400
	400	450
	450	500
	500	550
	550	600
	600	650
φ135	650	700
	750	800
	900	1,000
φ135	1,050	1,100
	1,200	1,300



Type HGMP with vibratory feeder

Features
Combination with Vibration Feeder improves results.

- Specifications**
1. Controller included.
 2. Vibration feeder: SUS304, Mount:SS



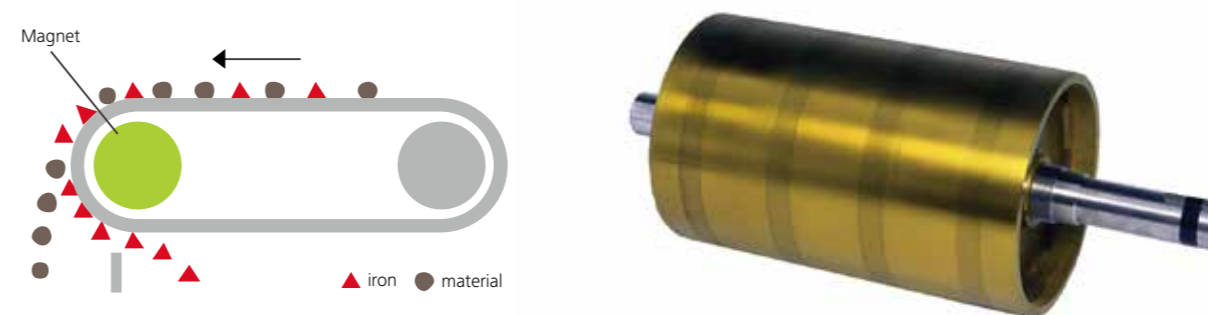
Model	HGMP-	φ70x250L	φ70x300L	φ70x350L	φ70x400L	φ70x450L	φ70x500L	φ70x550L	φ70x600L	φ70x650L	φ70x750L
Pulley	Belt width	250	300	350	400	450	500	550	600	650	750
	Effective width	194	266	302	350	398	446	506	542	602	698
	Pulley width	265	315	365	415	465	520	570	620	670	770
Feeder	Mode	FD-19-90ST	FD-25-90ST	FD-30-120ST	FD-35-120ST	FD-40-120ST	FD-44-120ST	FD-50-140ST	FD-54-140ST	FD-60-140ST	FD-70-140ST
	Trough width	190x900L	250x900L	300x1200L	350x1200L	400x1200L	440x1200L	500x1400L	540x1400L	600x1400L	700x1400L
	Motor	0.13kwx2	0.25kwx2	0.25kwx2	0.25kwx2	0.25kwx2	0.25kwx2	0.4kwx2	0.4kwx2	0.4kwx2	0.4kwx2

16 Magnetic Pulley Model: WN·RWN

Usage
Simple exchange from the head pulley to magnetic pulley will transform a conveyor to separator of iron particles from the raw material. It's the number one item for food processing factories to recycling facilities.

- Features**
1. Selection of vertical and horizontal pole.
 2. Available Samarium Cobalt magnet for high temp application.
 3. Custom made pulley shaft and pole available

- Specifications**
1. Standard model (WN): Vertical pole 2,000 gauss. Size pole 1,000 gauss (pulley surface)
 2. High intensity magnetic power model (RWN): Side pole 3,000/5,000 gauss (pulley surface)
 3. Pulley OD: Vertical pole type OD215~OD318mm, Side pole type OD215~457mm
 4. Custom made pulley length and shaft diameter available.



Type-WN (Ferrite magnet) ... Vertical pole 2,000 gauss, Side pole 1,000 gauss
Type-RWN (Neodymium) ... Side pole 3,000 gauss, Side pole 5,000 gauss

Pulley diameter	Pulley width(mm)	Belt width(mm)	Weight(kg)
φ215	380	350	70
	450	400	80
	500	450	90
	550	500	100
	650	600	120
	800	750	140
	950	900	170
	1050	1000	190
φ265	1250	1200	220
	380	350	90
	450	400	110
	500	450	120
	550	500	130
	650	600	160
	800	750	190
	950	900	230
φ315	1,050	1,000	250
	1,250	1,200	300
	380	350	120
	450	400	140
	500	450	150
	550	500	170
	650	600	200
	800	750	240
φ355	950	900	290
	1,050	1,000	310
	1,250	1,200	380

Pulley diameter	Pulley width(mm)	Belt width(mm)	Weight(kg)
φ355	380	350	130
	450	400	160
	500	450	175
	550	500	190
	650	600	230
	800	750	280
	950	900	330
	1,050	1,000	365
φ457	1,250	1,200	435
	500	450	230
	550	500	250
	650	600	300
	800	750	365
	950	900	330
	1,050	1,000	480
	1,250	1,200	570
φ315	800	750	460
	950	900	550
	1,050	1,000	660
	1,250	1,200	720

※ Custom made can be arranged.
※ The estimated weight.

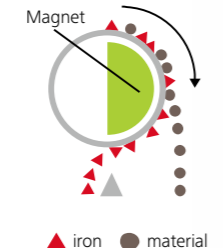

17 Drum type magnet

Usage → Wide range of applications including resource recycling, wood, steel, ceramic, chemical and food.

Drum Magnetic Separator Model: EN·REN (Drum only)

Features

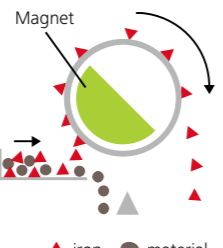

1. Continuous separation process.
2. Available in 10,000 gauss (EN)/3,000 gauss or 5,000 gauss (REN)
3. Available in high temperature models (300°C)

Electromagnet Drum Separator Model: EDS

Features

1. Iron separation from crushed bulk waste or shredder line
2. Can be used for pick-up recovery
3. Model EDSP available with permanent magnet

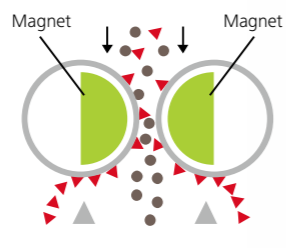




EDS-φ600×1000L

Twin-pole Drum Type Magnetic Separator TRMX type

Features

1. Dual drums with opposite poles creates a strong and wide magnetic field
2. More efficient at separating scrap iron and weak magnetic stainless scrap than two parallel drums

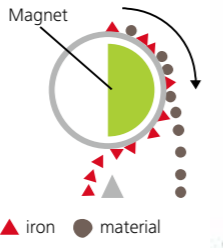




TRMX-φ355×1200L

Intensive Magnetic Force Drum Model: HGMD


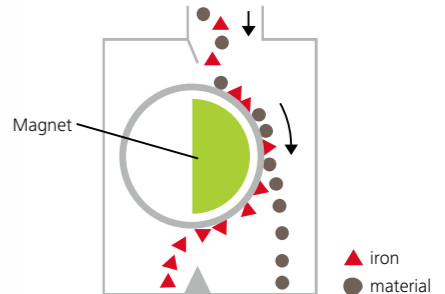
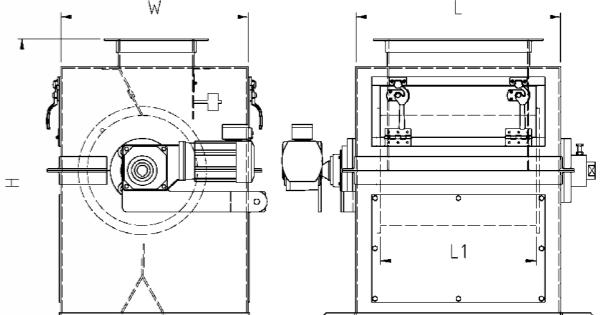
Features

1. 9,000 gauss drum (Vertical Pole)
2. Even stainless bolts and nuts can be separated

HGMD-φ405×420L

18 Drum with Housing Model: ENS·RENS

RENS-φ315×500L

Drum diameter (mm)	Drum width L1 (mm)	Processing capacity (M3/H)	Drum type EN	Drum type ENS			
				W (mm)	L (mm)	H (mm)	Weight (kg)
φ267	300	20	74	500	385	780	180
	350	24	86		435		190
	400	28	99		485		210
	450	32	110		535		220
	500	36	123		585		240
	550	40	135		635		250
φ318	300	25	90	540	435	830	200
	350	30	105		485		220
	400	35	120		535		240
	450	40	135		585		260
	500	45	150		635		270
	550	50	165		685		290
φ355	300	30	114	590	440	880	230
	350	36	133		490		250
	400	42	152		540		280
	450	48	171		590		300
	500	54	190		640		320
	550	60	209		690		340
φ406	400	35	120	540	435	830	240
	450	40	135		485		220
	500	45	150		535		240
	550	50	165		585		260
	600	55	180		635		270
	600	55	180		735		310
φ508	300	30	114	590	440	880	230
	350	36	133		490		250
	400	42	152		540		280
	450	48	171		590		300
	500	54	190		640		320
	550	60	209		690		340
φ609	400	35	120	540	435	830	240
	450	40	135		485		220
	500	45	150		535		240
	550	50	165		585		260
	600	55	180		635		270
	600	55	180		735		310
φ609	600	55	180	590	440	880	230
	650	60	209		490		250
	700	66	228		540		280
	750	72	247		590		300
	800	78	266		640		320
	800	78	266		740		370
φ609	700	66	228	590	440	880	230
	750	72	247		490		250
	800	78	266		540		280
	850	84	285		590		300
	900	90	304		640		320
	900	90	304		740		370
φ609	800	78	266	590	440	880	230
	850	84	285		490		250
	900	90	304		540		280
	950	96	323		590		300
	1,000	102	342		640		320
	1,000	102	342		740		370
φ609	900	90	304	590	440	880	230
	950	96	323		490		250
	1,000	102	342		540		280
	1,050	108	361		590		300
	1,100	114	380		640		320
	1,100	114	380		740		370
φ609	1,000	102	342	590	440	880	230
	1,050	108	361		490		250
	1,100	114	380		540		280
	1,150	120	399		590		300
	1,200	126	418		640		320
	1,200	126	418		740		370

Drum diameter (mm)	Drum width L1 (mm)	Processing capacity (M3/H)	Drum type EN	Drum type ENS			
				W (mm)	L (mm)	H (mm)	Weight (kg)
φ406	400	49	150	640	535	930	280
	450	56	170		585		300
	500	62	188		635		330
	550	69	205		685		350
	600	76	225		735		370
	700	90	260		835		410
φ508	800	104	300	780	935	1,030	460
	900	118	340		1,135		510
	500	78	275		640		430
	550	86	300		690		460
	600	94	330		740		490
	700	110	385		840		560
φ609	800	126	440	1,200	940	1,530	620
	900	142	495		1,050		680
	1,000	158	550		1,150		740
	600	115	600		740		860
	700	135	690		840		960
	800	155	800		940		1,100
φ609	900	175	890	1,200	1,040	1,530	1,200
	1,000	195	1,000		1,140		1,300
	1,100	215	1,100		1,240		1,400
	1,200	235	1,200		1,340		1,550
	600	115	600		740		860
	700	135	690		840		960

※ Process Volume: Based on Feed Grain
 ※ Please check spec, dimensions & weight on the drawing.
 ※ Custom design is available upon your request.

19 Suspension Permanent Magnetic Separator Model: PUF-S

Model: PUF-S50



Usage

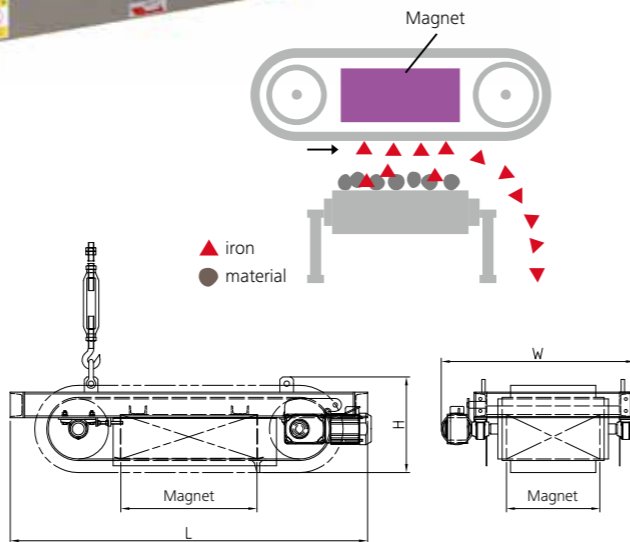
PUF-S is designed to install above and 90 degrees to the conveyor belt to remove scrap metals from the materials on the moving conveyor.

Features

1. Permanent magnet saves energy cost on magnetization power.
2. Tough durable design is suitable for outdoor use.
3. Compact Size with reliable performance.

Specifications

1. Available in 3 models
2. Wear protection wiper standard
3. Optional oil protection wiper and protective cover models
4. Comes with hook for hanging installation



E5Series

Model	Applicable belt width(mm)	Belt Speed	Body Dimensions (mm)			Magnet Dimensions(mm)		Belt with (mm)	Drive motor (kw)	Drive motor (kw)
			L	W	H	L1	W1			
PUF-S30E5	450MAX.	60m/min (60Hz)	1,700	967	501	500	400	450	0.75	410
PUF-S40E5	600MAX.		1,850			650				450
PUF-S45E5	750MAX.		2,000			800				500
PUF-S50E5	900MAX.	50m/min (50Hz)	2,150	967	501	950	400	450	0.75	530
PUF-S60E5	1,050MAX.		2,300			1,100				620
PUF-S70E5	1,200MAX.		2,450			1,250				670

E8Series

Model	Applicable belt width(mm)	Belt Speed	Body Dimensions (mm)			Magnet Dimensions(mm)		Belt with (mm)	Drive motor (kw)	Drive motor (kw)
			L	W	H	L1	W1			
PUF-S30E8	450MAX.	60m/min (60Hz)	1,800	1,166	556	500	550	600	1.5	630
PUF-S40E8	600MAX.		1,950			650				730
PUF-S45E8	750MAX.		2,100			800				820
PUF-S50E8	900MAX.	50m/min (50Hz)	2,250	1,166	556	950	550	600	1.5	890
PUF-S60E8	1,050MAX.		2,400			1,100				1,000
PUF-S70E8	1,200MAX.		2,550			1,250				1,250

E10Series

Model	Applicable belt width(mm)	Belt Speed	Body Dimensions (mm)			Magnet Dimensions(mm)		Belt with (mm)	Drive motor (kw)	Drive motor (kw)
			L	W	H	L1	W1			
PUF-S40E10	600MAX.	60m/min (60Hz)	2,060	1,316	593	650	700	750	1.5	1,080
PUF-S45E10	750MAX.		2,210			800				1,100
PUF-S50E10	900MAX.		2,360			950				1,250
PUF-S60E10	1,050MAX.	50m/min (50Hz)	2,510	1,316	593	1,100	700	750	1.5	1,450
PUF-S70E10	1,200MAX.		2,660			1,250				1,610

※ Custom made can be arranged

20 Suspension Permanent Magnetic Separator Model: PUF-SM

Features

1. Compact design
2. Simple structure · Low cost

Specifications

1. AC200V~440V
2. Hanging bolt with turnbuckle attached.



Model	Applicable belt width(mm)	Belt Speed	Body Dimensions (mm)			Magnet Dimensions (mm)		Drive motor (kw)	Weight (kg)
			L	W	H	L1	W1		
PUF-400x(100) M	400MAX.	※1	1,039	432	220	525	290	0.4	120
PUF-450x(170) SM	450MAX.	60m/min (60Hz)	1,550	900	410	500	340	0.75	400
PUF-600x(170) SM	600MAX.		1,700	1,050		650	490		490
PUF-750x(170) SM	750MAX.	50m/min (50Hz)	1,900	1,150	430	800	650	1.5	540
PUF-900x(260) SM	900MAX.		2,250	1,460		1,000	800		1,300

※1. Belt Speed 42m/min(50Hz), 50m/min(60Hz)

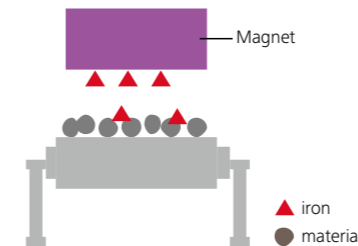
21 Suspension Permanent Magnetic Separator Model: PUF-H

Usage

PUF-H is designed to install over the belt conveyor to remove scrap metals.

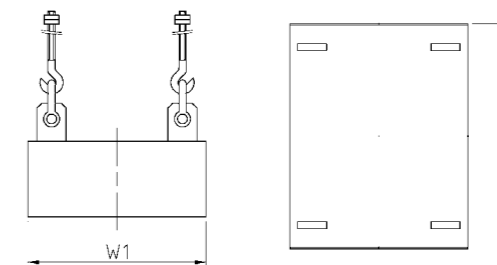
Features

1. No Operating energy is required.
2. Tough durable design is suitable for outdoor use.
3. Available 3 models depending on the magnetic force.



E5Series

Model	Applicable belt width(mm)	Magnet Dimensions (mm)	
		L1	W1
PUF-H30E5	450MAX.	500	400
PUF-H40E5	600MAX.	650	
PUF-H45E5	750MAX.	800	
PUF-H50E5	900MAX.	950	400
PUF-H60E5	1,050MAX.	1,100	
PUF-H70E5	1,200MAX.	1,250	



E8Series

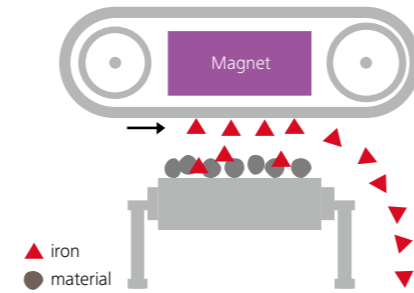
Model	Applicable belt width(mm)	Magnet Dimensions (mm)	
		L1	W1
PUF-H30E8	450MAX.	500	550
PUF-H40E8	600MAX.	650	
PUF-H45E8	750MAX.	800	
PUF-H50E8	900MAX.	950	550
PUF-H60E8	1,050MAX.	1,100	
PUF-H70E8	1,200MAX.	1,250	

E10Series

Model	Applicable belt width(mm)	Magnet Dimensions (mm)	
		L1	W1
PUF-H40E10	600MAX.	650	700
PUF-H45E10	750MAX.	800	
PUF-H50E10	900MAX.	950	
PUF-H60E10	1,050MAX.	1,100	700
PUF-H70E10	1,200MAX.	1,250	

22 Self-Cooled Suspension Electromagnetic Separator Model: HUF-S

Hybrid Heat Releasing System, No Insulation Oil Necessary



Usage HUF-S is designed to install above and at 90 degrees to primary conveyor belt and remove scrap metal from the primary conveyor.

Features

1. The dry self-cooling mechanism requires no insulation oil or cooling fan to cool the coil. Therefore, there is no fire hazard.
2. The unit requires no cooling oil, therefore, it can be installed in any angle.
3. High cooling efficiency maximizes separator ability without a dust protection cover and allows 24-hour continuous operation.
4. Durable mechanical design for outdoor use.

Specifications

1. Standard model equipped with wear protection wiper. Also available with oil protection wiper and protection cover models.
2. Includes controller and suspension bolts.
3. Available permanent magnet combo design.

Model	Applicable belt width(mm)	Magnetization power (kw)	Body dimensions(mm)			Magnet dimensions(mm)		Motor (Kw)	weight (kg)
			L	W	H	W1	L1		
HUF-S30	400MAX.	1.0	2,190	970	830	440	540	0.75	800
HUF-S35	500MAX.	2.1	2,050	1,080	700	600	700	0.75	800
HUF-S40	600MAX.	2.5	2,450	1,280	730	740	800	1.5	1,250
HUF-S45	750MAX.	3.4	2,600	1,390	780	850	950	1.5	1,700
HUF-S50	900MAX.	4.5	2,750	1,490	780	950	1,100	1.5	2,100
HUF-S60	1,050MAX.	5.6	3,050	1,620	960	1,090	1,250	2.2	3,100
HUF-S70	1,200MAX.	8.6	3,490	1,790	1,200	1,240	1,450	5.5	4,800
HUF-S80	1,400MAX.	11.1	4,180	2,030	1,205	1,400	1,600	5.5	7,000
HUF-S90	1,600MAX.	11.5	4,120	2,250	1,216	1,600	1,800	5.5	9,000

23 Suspension Type Electromagnetic Separator Model: HUF-H

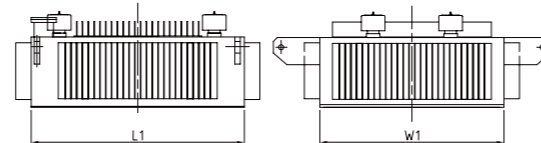
Hybrid Heat Releasing System, No Insulation Oil Necessary

Usage

Installs over the primary conveyor belt to remove iron particles from raw material on the belt. Ideal where smaller amounts of iron contamination are expected. The unit is easy to reach for cleaning.

Specifications

1. Includes controller and suspension bolts
2. Refer to HUF chart for size and capability
3. Durable mechanical design for outdoor use



Model	Magnetization power (kw)	Magnet dimensions(mm)		Weight (kg)
		L1	W1	
HUF-H30	1.0	440	540	400
HUF-H35	2.1	600	700	500
HUF-H40	2.5	740	800	900
HUF-H45	3.4	850	950	1,200
HUF-H50	4.5	950	1,100	1,600
HUF-H60	5.6	1,090	1,250	2,200
HUF-H70	8.6	1,240	1,450	3,600
HUF-H80	11.1	1,400	1,600	4,000
HUF-H90	11.5	1,600	1,800	5,000

24 Self-Cooled Suspension Electromagnetic Separator Model: NUF-S

Hybrid Heat Releasing System

Features

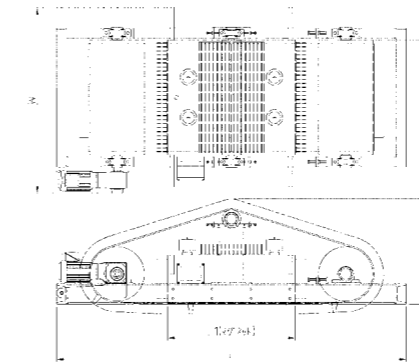
1. No cooling fins.
2. Can be made as electromagnetic or hybrid electromagnetic/permanent type.

Specifications

1. Control panel and hanger bolt included
2. Refer to NUF chart for size and capability
3. Durable mechanical design for outdoor use



Model	Applicable belt width(mm)	Magnetization power (kw)	Body dimensions(mm)			Magnet dimensions(mm)		Motor (Kw)	weight (kg)
			L	W	H	W1	L1		
NUF-S30	400MAX.	1.0	2,190	970	750	440	540	0.75	800
NUF-S35	500MAX.	2.1	2,050	1,080	700	600	700	1.5	800
NUF-S40	600MAX.	2.5	2,450	1,280	730	740	800		1,250
NUF-S45	750MAX.	3.4	2,600	1,390	780	850	950		1,700
NUF-S50	900MAX.	4.5	2,750	1,490	780	950	1,100	1.5	2,100



Comparison of coil cooling methods

	Hybrid self-cooling based on radiation	Self-cooling using insulating oil	Forced air-cooling using fan
Cooling effect	◎	△	○
Fire safety	◎	×	×
Generation of power dust	◎	△	×
Installation environment	○	×	×
Maintenance/inspection	○	×	△
Dimensions/weight	○	×	○
Cost	○	△	○

25 Round Electromagnetic Separator Model: HLS

Usage

Durable mechanism is suitable for cement plant and quarry.

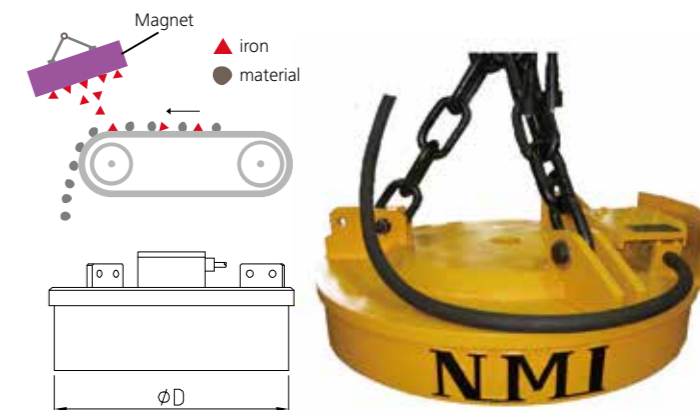
Features

Water and dust proof design eliminates contamination and extends the life of the unit.

Specifications

1. Control panel, Hanger bolt included.
2. Can be used continuously for 24 hours.

Model	Applicable width(mm)	Magnetic power(kw)	Dimensions (mm)	Weight (kg)
HLS-300	250	0.2	300	110
HLS-400	350	0.4	400	170
HLS-500	400	0.7	500	320
HLS-600	500	0.9	600	400
HLS-700	600	1.1	700	550
HLS-800	700	1.4	800	750
HLS-900	750	1.9	900	1,000
HLS-1100	900	3.4	1,100	1,700
HLS-1300	1,050	4.7	1,300	2,700
HLS-1500	1,200	7.7	1,500	4,200



26 Eddy Current Separator Model: ALS Recycle Machine



ALS-L7.5

Usage

1. Recovery aluminum cans from plastic and glass bottles.
2. High efficiency of recovery of aluminum from city waste.
3. Separation of nails and iron steels from crushed machines.
4. Recovery of valuable metals from glass cullet.

Features

1. Two models available: ALS-L for larger objects like cars; ALS-S for small objects
2. When used with vibration feeder, the efficiency is increased because of stable feed rate

Specifications

1. Magnetic Drum Speed: ALS-L (Max. 1,800 rpm); ALS-S (Max. 2,500 rpm)
2. Controller included
3. Belt drive with hybrid gear motor

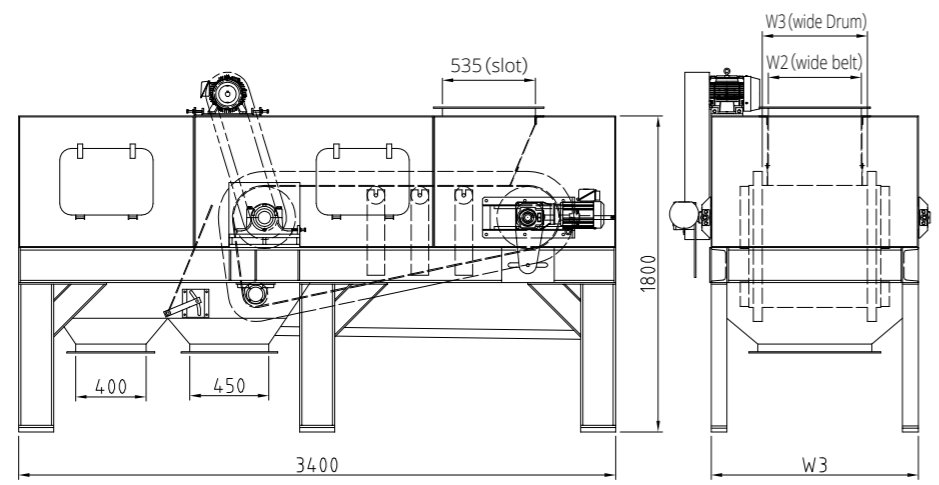
The high-energy permanent magnet inside a high speed drum creates a strong electromagnetic induction phenomenon on the surface of the drum. When the aluminum, copper, brass and magnesium (high conductive materials) pass through this magnetic field, the eddy current occurs repelling them respective to their conductivity thereby pushing each the distance determined by Fleming's left hand law creating separate piles for each type of material.



Separated non-ferrous metals



Separation of aluminum cans from steel cans



Comparison of coil cooling methods

Model	Standard body dimension (mm)			Drum diameter (mm)	Drum speed (RPM)	Belt speed (m/min)	Output(kw)		Approximate Weigh (Approx. kg)
	W1	W2	W3				Belt	Drum	
ALS-L3	330	260	880	φ354	Max 1,800	20~100	0.75	2.2	1,200
ALS-L4.5	480	410	1,030				1.5	3.7	1,500
ALS-L6	630	560	1,180				5.5	1,800	
ALS-L7.5	780	710	1,330				5.5	2,100	
ALS-L9	930	860	1,480				7.5	2,500	
ALS-L12	1,230	1,160	1,780				7.5	3,000	



ALS-S12 (showing with vibration feeder)

Aluminum separator used for

- Bulk waste crushing line
Aluminum separators enhance the efficiency of recovery from municipal waste
- Recovery of conductors from glass cullets
Aluminum separators streamline the recovery of valuable metals from glass cullets
- Processing of aluminum molding sand
Aluminum separators recovers aluminum scrap for aluminum shell sand recycling lines
- Classification of Aluminum VS Steel Cans
Aluminum separators automatically pick up aluminum and steel cans from municipal waste, recycling stations, and highway debris
- Recovery of aluminum from PET
Aluminum separators allow efficient separation and recovery of aluminum from crushed PET bottles
- Separation of nails used in pachinko game machines
- Recovery of other conductors



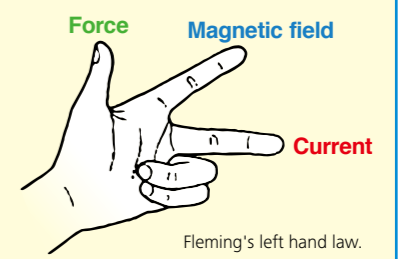
Recovered crushed non-ferrous metals from ALS-S machine

ALS-S Series

Model	Standard body dimension(mm)			Drum diameter(mm)	Drum speed (RPM)	Belt speed (m/min)	Output(kw)		Approximate Weight(Approx. kg)
	W1	W2	W3				Belt	Drum	
ALS-S3	330	260	880	φ361	Max 2,500	20~100	0.75	3.7	1,300
ALS-S4.5	480	410	1,030				1.5	5.5	1,600
ALS-S6	630	560	1,180				1.5	1,900	
ALS-S7.5	780	710	1,330				7.5	2,200	
ALS-S9	930	860	1,480				2.2	2,600	
ALS-S12	1,230	1,160	1,780				2.2	3,000	

Mechanism of Eddy Current Separator

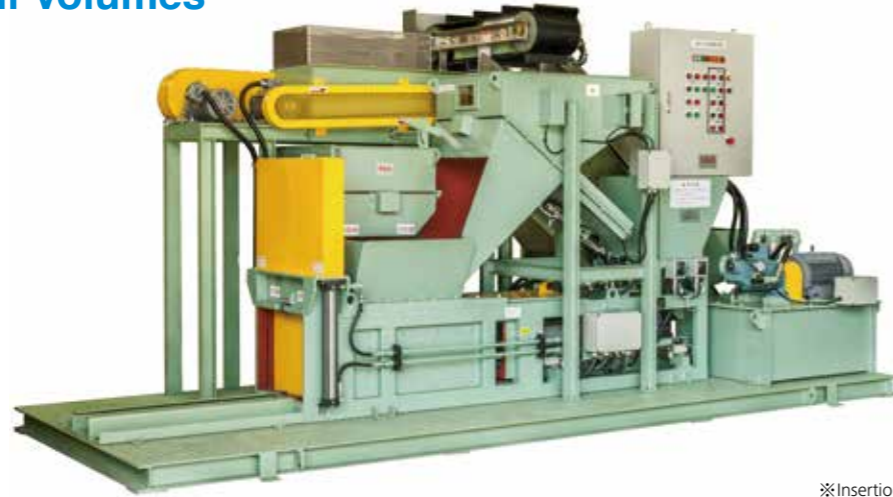
The high-energy permanent magnet located inside the high-speed drum creates a strong electromagnetic induction phenomenon on the surface of the drum. When the aluminum, copper, brass and magnesium pass through this magnetic field, the eddy current occurs repelling them respective to their conductivity thereby pushing each the distance determined by Fleming's left hand rule. The devise is useful for recycling, resource collection, and as an aluminum separator.



Recycle machine

27 Eddy Current Separator/Compactor Model 1

Revolution in High Efficiency Recycling Devices for Small Volumes



※Insertion bag stand is optional.

Usage

Compact turn-key system for separation and compacting of non-conductive, conductive and highly conductive materials for small volumes.

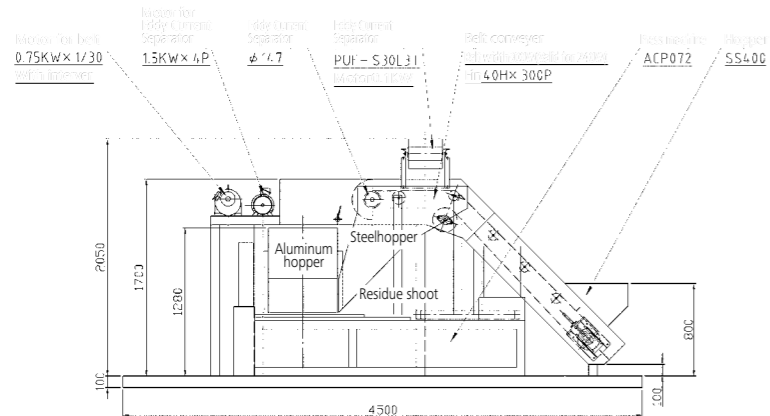
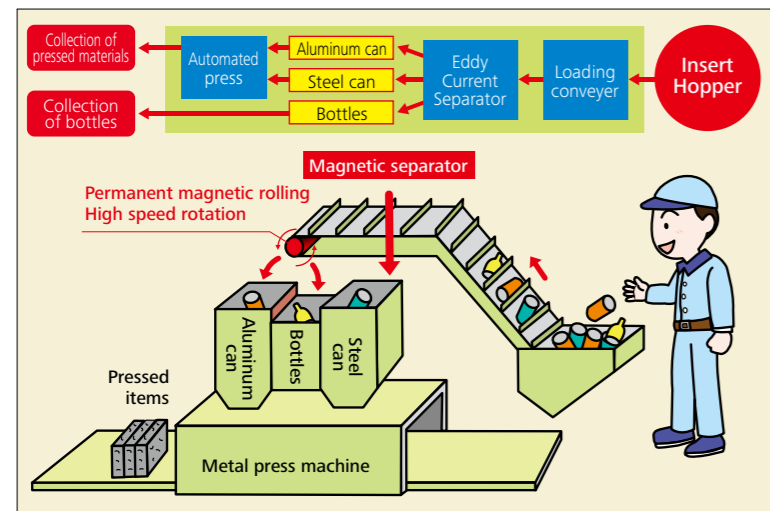
Features

1. Reducing manpower and process time.
2. Limited Installation Space of 4.5m x 2m
3. Small size but 3 ton/day (5 hr. operation) Capability.

Specifications

1. Power Source 200/220V
2. Controller included

A combination of Eddy Current Separator, Overhang Electromagnetic Separator and compressing machine.



Specifications of Shigen-Ka-Kun

- ① Suspension magnetic separator: PUF-S30E3T type
 - ② Aluminum Separator: ALS-L2-type
 - ③ Belt conveyor: finned, graded 460W (valid 240W)
 - ④ Pressing Machine: ACP-072 type
 - ⑤ Hopper: 650W x 580L x 300H (Approx. 50 l)
- Power consumption (total): 9.8kw Total weight: about 3,100kg

Specifications of press machine (ACP-072 type)

- Capacity: Approx. 18,000 pcs / hour
(Steel cans / 720 kg
Aluminum cans / 240 kg)
- Operation: automatic / manual
- Pressing Method: Hydraulic Single Pressing
- Pressing Room Dimensions: 400 x 400 x Free Length (mm)
- Processing cycle: 40 seconds
(Volume 200 pcs.
Steel cans / 8kg
Aluminum Can / 2.3kg)
- Motor Size: 7.5kw
- Press Machine Weight: About 1,300 kg

Recycle machine

28 Eddy Current Separator/Compactor Model 2

Revolution of High Efficiency Recycling Devices for Large Volumes!



Features

1. Max. processing volume of up to 1.5 ton/hr.
2. Easy quick installation. (Min. 2days.)
3. Compacting capability improves higher efficiency of work load.

Specifications (example)

- ① Suspension magnetic separator : PUF-S30E5 type
- ② Eddy Current Separator : ALS-L3 type
- ③ Climber conveyor : 400w x 4500L
- ④ Press machine : ACP-100-2 type
- ⑤ Input conveyor : 1600L x 1040W x 500H



Shigen-Ka-Kun II + Press machine ACP-100-2 (operation capacity: 5 t / day)

29 Aluminum and Steel Can Separator

Recycle 27 machine

Separation and Compression of Aluminum and Steel Can!

Magnetic Pulley separates aluminum and steel cans into separate bins and automatically compacts them when full.

Features

1. Requires small space for installation
2. Liquid vent to release water from cans
3. Easy Installation

Specifications

- Capacity: Approx. 500kg / hour (Steel cans)
- Consumption: 5.9kw
- Operation: Automatic / manual
- Compression method: one-sided oil tight pressure
- Press compartment: 400 x 400 x Free Length (mm)



Recycling machine

30 Aluminum / Steel Can Separator Model: ABC

Waste Materials can be turned into Valuable by Recycling



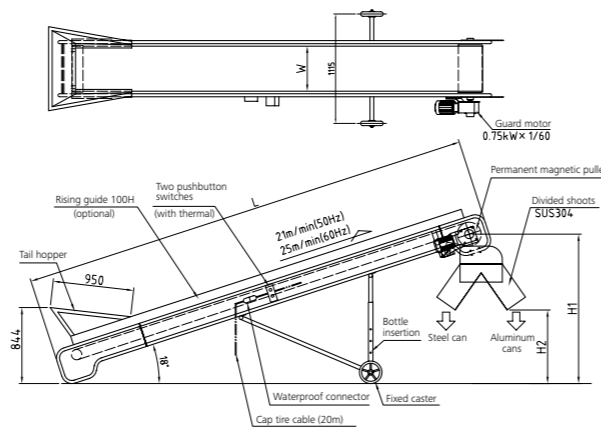
ABC-3550
Rising guide is optional.

Video available on our website

Usage
Separation of Aluminum and Steel cans. Iron recovery from rubber, glass, wood waste and other non-ferrous materials.

- Features**
1. Simple operation and Rolls for easy relocation
 2. Optional drum separator and overhead electromagnetic separator will increase process volume.
 3. Even better combination with eddy current separator.
 4. Optional belt conveyor speed adjustment inverter for quick manual separation process.
 5. Removable hopper and work station can be optional.

- Specifications**
1. Power Source 200/220V, 50/60Hz. Energy saver system.
 2. 20 meter long plug in cab tire cable.
 3. Sorting shooter and tail hopper included
- ※Side guide and side safety guide are optional.



Model	Belt width(mm)	Vertical lengthL(mm)	H1 (mm)	H2 (mm)	Permanent magnetic pulley	motor	Weight(kg)			
ABC-3530	350mm	3	1,250	400	φ215 × 380L	0.75kw (1/60)	400			
ABC-3540		4	1,350	500			400			
ABC-3550		5	1,650	800			400			
ABC-3555		5.5	1,800	950			400			
ABC-3560		6	1,950	1,100			500			
ABC-3570		7	2,100	1,200			500			
ABC-4040		400mm	4	1,350			500	φ265 × 450L	0.75kw (1/60)	400
ABC-4050	5		1,650	800	400					
ABC-4055	5.5		1,800	950	400					
ABC-4060	6		1,950	1,100	500					
ABC-4070	7		2,100	1,200	500					
ABC-5050	500mm		5	1,650	800	φ265 × 550L	0.75kw (1/60)			400
ABC-5055			5.5	1,800	950					500
ABC-5060		6	1,950	1,100	500					
ABC-5070		7	2,100	1,200	500					
ABC-6050		600mm	5	1,650	800			φ265 × 650L	0.75kw (1/60)	500
ABC-6055			5.5	1,800	950					500
ABC-6060			6	1,950	1,100					600
ABC-6070	7		2,100	1,200	600					

※H1, H2 can be adjusted in height thus the dimensions are approximate.

Recycling machine

31 Automated Can Compactor Model: ACP

Small and high efficiency model

- Usage**
1. Fully automated operation
 2. Strong compression
 3. Compact design for space saving

- Features**
1. Controller included
 2. Optional automated hopper for continuous operation



ACP-100-2

	ACP-072-2	ACP-100-2 Ⅱ型	ACP-150-2	ACP-200-2	ACP-300-2
Compression System	Hyd. Compress by two way	Hyd. Compress by two way	Hyd. Compress by two way	Hyd. Compress by two way	Hyd. Compress by two way
Operation	FullAuto/Man.	FullAuto/Man.	FullAuto/Man.	FullAuto/Man.	FullAuto/Man.
Cylinder pressure	210kg/cm ²	210kg/cm ²	210kg/cm ²	210kg/cm ²	210kg/cm ²
Cylinder pressure	Lid	16ton	33ton	42ton	53ton
	Compression	26ton	33ton	55ton	80ton
	Gate	5ton	5ton	8ton	8ton
Motor	7.5kw	7.5kw	11kw	15kw	22kw
Area of press Compartment	400Wx475Hx950L	500Wx475Hx950L	600Wx600Hx1300L	650Wx700Hx1400L	700Wx800Hx1600L
Compressed Block Delivery	400Wx300Hxfree L	500Wx300Hxfree L	600Wx400Hxfree L	650Wx450Hxfree L	700Wx500Hxfree L
Time of One cycle	45sec	50sec	60~80sec	70~90sec	70~90sec
Capacity	0.72ton/h	1.0ton/h	1.5ton/h	2.0ton/h	3.0ton/h
Oil tank capacity	180L	200L	300L	450L	500L
Gross weight	2ton	3ton	5ton	7ton	10ton
Overall width(mm)	700	800	900	1,000	1,050
Length(mm)	3,600	3,150	4,100	4,300	4,900
Overall height(mm)	1,600	1,800	2,100	2,500	2,900

33 Lifting Magnet Model: HL

Recycle machine

- Tube Magnet
- Grate Magnet
- Magnetic Strainer
- Magnet Plate
- Electromagnetic Separator (Dry Type)
- Electromagnetic Separator (Wet Type)
- Stainless Steel Separator
- Magnetic Pulley
- Drum-Type Magnetic Separator
- Suspension Type Permanent Magnetic Separator
- Suspension Type Electromagnetic Separator
- Eddy Current Separator
- Eddy Current Separator System
- Can Separator
- Press Machine
- Lifting Magnet**
- Maghammer
- Electrostatic Corona Separator
- Other Magnetic Separators

Usage
Best for scraps and steel plate handling. Can be used on an overhead traveling crane, backhoe, or crane vehicle.

Features

1. Durable long life design
2. Wide variety of installation to backhoe and cranes.
3. Custom made for backhoe size.

Specifications

1. Power Source: AC200/220V 50/60Hz. Power supplied by generator on backhoe.
2. Custom and light version is available upon request.



HL-1100

Video
available on our website



Installed on a crane HL-1300

Custom made attachment design



HL-900 control panel

Model	Size mm	Power Supply*Voltage (AC) V	Load Current		Magnetization Power kw	Weight kg	Hanging capacity (Max)			
			Ambient Temp A	Working Temp A			Ingot kg	Pig iron kg	Scrap kg	Off shoulder kg
HL-300	300	220	11	7	0.3	60	1,300	-	-	-
HL-500	500	220	11.5	8.3	1.5	200	2,300	130	100	90
HL-700	700	220	18	11.3	3.6	500	2,800	240	160	105
HL-800	800	220	18	15	4	550	3,000	300	200	110
HL-900	900	220	30	22	6.6	750	4,000	360	260	160
HL-1100	1,100	220	40	33	9.9	1,200	-	500	450	230
HL-1300	1,300	220	64	56	14	2,000	-	800	700	360
HL-1500	1,500	220	80	69	17	2,500	-	1,100	1,100	550

Example of installation



4 ton truck loading

- Model: HL-800
- Controller
- Generator
- Cable Reel
- Connector
- Cum Switching



Arm Attachment

- Model: HL-500
- Controller
- Generator
- Connector
- Foot Switching



0.4m3 Backhoe

- Model: HL-900
- Controller
- Generator
- Cable Reel
- Connector
- Foot Switching

- Tube Magnet
- Grate Magnet
- Magnetic Strainer
- Magnet Plate
- Electromagnetic Separator (Dry Type)
- Electromagnetic Separator (Wet Type)
- Stainless Steel Separator
- Magnetic Pulley
- Drum-Type Magnetic Separator
- Suspension Type Permanent Magnetic Separator
- Suspension Type Electromagnetic Separator
- Eddy Current Separator
- Eddy Current Separator System
- Can Separator
- Press Machine
- Lifting Magnet**
- Maghammer
- Electrostatic Corona Separator
- Other Magnetic Separators

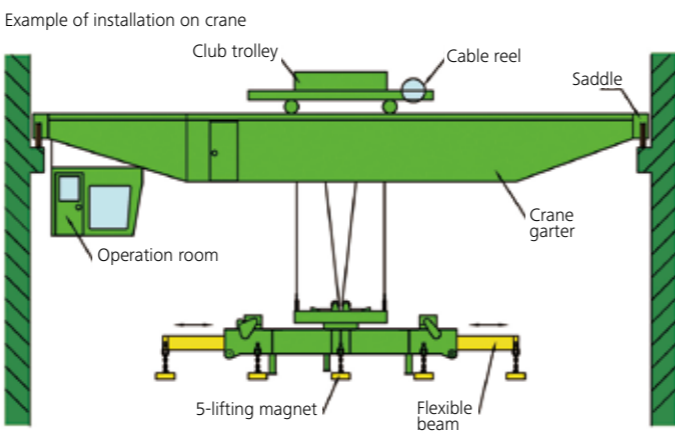
34 Electromagnetic Lifting Magnet for Transferring Plate

Strong lifting ability!!

Usage Electromagnetic lifting magnet is available for transferring one to multiple steel plates.

Specifications

1. We can design and manufacture accordingly to the request.
2. We can prepare for the specifics that are uninterruptible power equipment.



Model	Magnet dimensions		Magnetization Power (kw)	Weight(kg)	Usage	1500 mm wide plate Number of possible transport			
	Width(mm)	Length(mm)				6mm	10mm	16mm	32mm
HL-400W×1200L	400	1,200	3.0	550	50%ED	6	4	3	1
HL-400W×1600L	400	1,600	3.2	720		7	5	3	1
HL-400W×2000L	400	2,000	5.0	830		7	5	3	1

※We can design under different specifications according to the transfer object.

35 Permanent Magnetic Lifting Magnet Model: QZ1

Convenient! Permanent Magnetic Lifter for Steel Handling

Usage

Can be hung on cranes or hoists to transport steel and iron work to the desired location

Features

1. Flat and round steel plates can be lifted
2. Operation is easy with ON / OFF switch.
3. Power is not required. There is no fear of falling due to power failure while transferring object.
4. The structure is designed with safety concern. The handle is turned on only when it recognizes absorption of certain thickness of magnetic materials.



Manufacturer: KAIXIN

Model	Lifting capacity (kg)		Dimensions(mm)				Weight (kg)
	flat steel	round steel	A	B	C	D	
QZ1-0.1	100	50	100	82	80	155	5.5
QZ1-0.3	300	150	175	105	100	185	11.5
QZ1-0.6	600	300	225	140	125	235	26.5
QZ1-1	1,000	500	280	160	155	265	48
QZ1-2	2,000	1,000	360	210	185	426	80

- Tube Magnet
- Grate Magnet
- Magnetic Strainer
- Magnet Plate
- Electromagnetic Separator (Dry Type)
- Electromagnetic Separator (Wet Type)
- Stainless Steel Separator
- Magnetic Pulley
- Drum-Type Magnetic Separator
- Suspension Type Permanent Magnetic Separator
- Suspension Type Electromagnetic Separator
- Eddy Current Separator
- Eddy Current Separator System
- Can Separator
- Press Machine

- Tube Magnet
- Grate Magnet
- Magnetic Strainer
- Magnet Plate
- Electromagnetic Separator (Dry Type)
- Electromagnetic Separator (Wet Type)
- Stainless Steel Separator
- Magnetic Pulley
- Drum-Type Magnetic Separator
- Suspension Type Permanent Magnetic Separator
- Suspension Type Electromagnetic Separator
- Eddy Current Separator
- Eddy Current Separator System
- Can Separator
- Press Machine

- Lifting Magnet
- Maghammer
- Electrostatic Corona Separator
- Other Magnetic Separators

- Lifting Magnet
- Maghammer
- Electrostatic Corona Separator
- Other Magnetic Separators

36 Electro-Permanent Lifting Magnet: Safety Lift

What is Electro-Permanent Lifting Magnet?

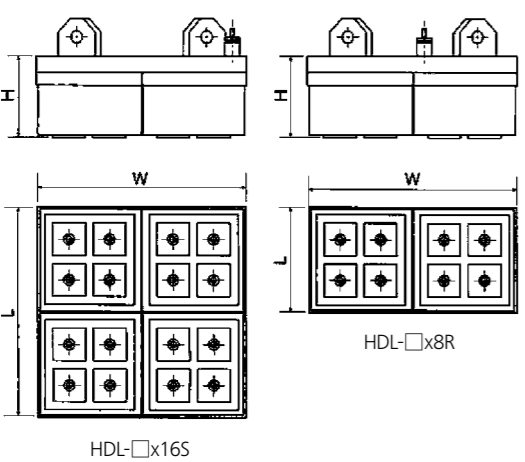
It is a lifting magnet with a combination of permanent magnet and electromagnetic circuit. It can charge and discharge the magnetic circuit as quick as 2 sec.

Features

1. No electricity needed while in motion.
 - Electrical pulse energizes and de-energizes only
 - Magnets not effected by power failure
2. 1/5 the power compared to standard electro-magnetic systems
3. No UPS requird.
4. Compact size / Big capacity
5. Handles a wide variety of steel slab, plate and pipe.



Can handle wide variety of slab, plate & pipe steels

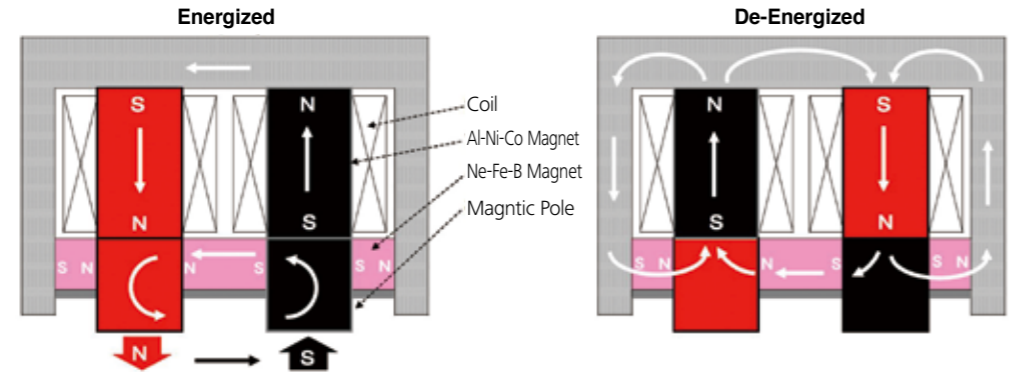


Model	Dimensions (mm)			Weight (kg)	Hanging Capacity(kg)
	W	L	H		
HDL-80x4S	306	306	180	97	800
HDL-80x16S	612	612	220	516	3200
HDL-80x36S	918	918	230	1225	7200
HDL-80x8R	612	306	220	264	1600
HDL-80x12R	918	306	230	412	2400
HDL-80x16R	1224	306	240	586	3200
HDL-80x20R	1530	306	250	772	4000
HDL-80x24R	1836	306	250	912	4800

Model	Dimensions (mm)			Weight (kg)	Hanging Capacity(kg)
	W	L	H		
HDL-50x1S	136	136	123	15	120
HDL-50x4S	211	211	123	35	350
HDL-50x16S	427	427	130	150	1400
HDL-50x8R	427	237	130	85	700

Model	Dimensions (mm)			Weight (kg)	Hanging Capacity(kg)
	W	L	H		
HDL-80x1S	192	192	170	40	400
HDL-80x4S	332	332	178	110	1000
HDL-80x16S	618	618	190	500	4000
HDL-80x8R	618	338	190	270	2000

Operating Principle



- | | |
|--|--|
| <ol style="list-style-type: none"> 1. A momentary pulse of electricity to the coi 2. Homopolarity between Al-Ni-Co & Ne-Fe-B Magnets 3. Strong magnetic flux from the magnet pole to hold | <ol style="list-style-type: none"> 1. Opposite direction pulse of electricity to the coil 2. Heterpolarity between Al-Ni-Co & Ne-Fe-B 3. Magnetic flux creates closed circuit & remains in loop |
|--|--|

Example of use



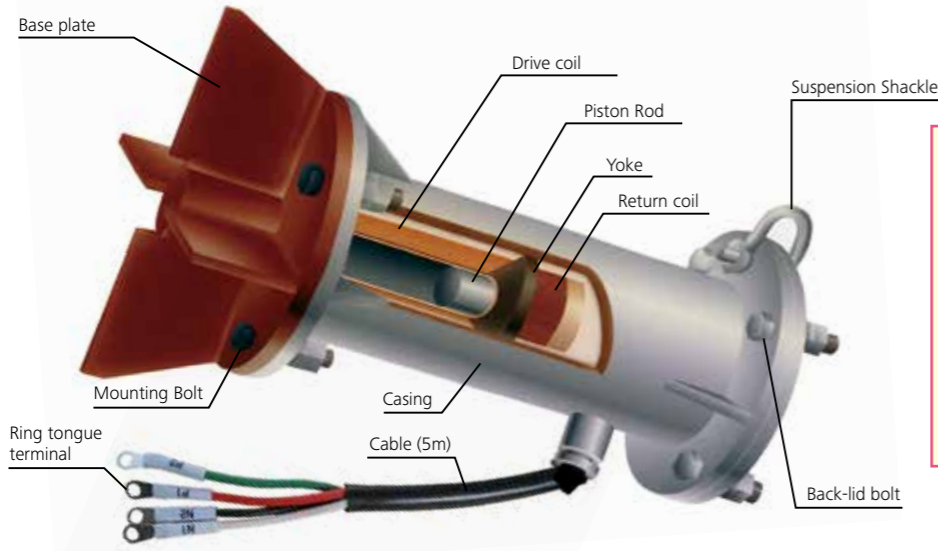
37 Electromagnetic Impact Vibrator "MagHammer"

Impact Vibrator

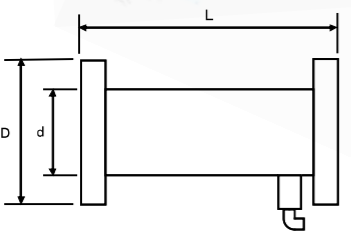
Solution for rat-holing, arching and bridging for powder and bulk solids

Video available on our website

- Usage** Prevents rat-holing, arching, bridging and adhesion in hoppers, bins, chutes, ducts and tanks.
- Specifications**
1. High efficiency for continuous impacting force.
 2. Flexible adjustments by controller fit specific needs for application.
 3. Sealed design allows use in severe dusty atmosphere.
 4. Operation can be activated by an external signal, internal timer or manual control.



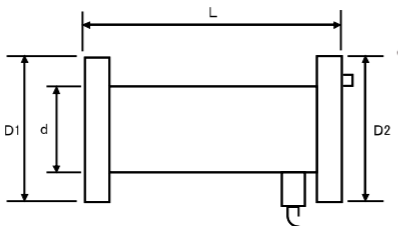
- High Temperature Model (Ambient Temp. up to 100 degree C).
- Corrosion resistance (SUS version available).
- Direct impact type with extended piston.
- Base plate, bolts and nuts are included for installation.
- 5m connection cable is included.



Model	Construction	Impact force		Size (mm)			Weight (kg)	Ampere AC220V
		kg·m/sec	Hammer	D	d	L		
SIC-05A	Sealed Unit (Indirect Hitting)	1.8	1pound	130	76	226	7	1.3
SIC-1A		3.8	2pound	165	102	284	13	1.8
SIC-2A		8.2	4pound	190	114	318	22	3.4
SIC-3A		21.3	10pound	255	165	384	52	3.9
SIC-05AS	Sealed Unit Indirect hitting & Reducing noise	1.3	0.7pound	130	76	226	7	1.3
SIC-1AS		2.7	1.5pound	165	102	284	13	1.8
SIC-2AS		5.7	3pound	190	114	318	22	3.4
SIC-3AS		14.9	7pound	255	165	384	52	3.9

Explosion-proof (Exd II BT4) Electromagnetic MAGHAMMER

Available in steam and gas hazard areas (hazardous area 1 and 2)!



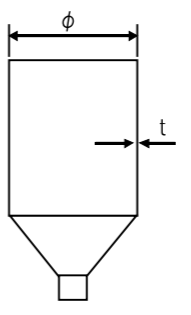
Model	Examination type Admitted number	Impact force		Size (mm)				Weight(kg)	Ampere AC220V
		kg·m/sec	Hammer	D1	D2	d	L		
SIC-05EX	TC18745	1.8	1lb	130	140	76	226	8	1.3
SIC-1AEX	TC18746	3.8	2lb	165	175	102	284	15	1.8
SIC-2AEX	TC18747	8.2	4lb	190	190	114	318	24	3.4
SIC-3AEX	TC18748	21.3	10lb	255	260	165	384	55	3.9

*Not approved in all countries

Selection Guide

Although the specific model and quantity will vary depending on the shape and dimensions of the hopper, as well as the condition of clogging and various other characteristics, the condition and water content of the powder, among others, general applications can follow the table shown at right to select model and quantity. Select appropriate model using the hopper wall thickness (t) and diameter (OD) value.

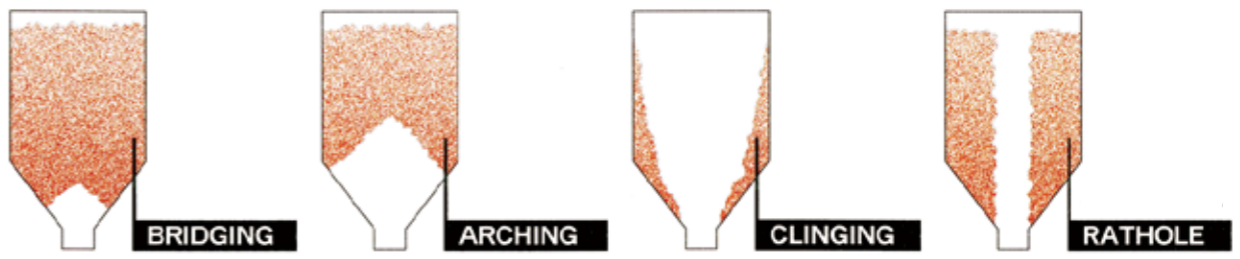
Since impact force is adjustable, you should select the largest model from among the applicable models and turn down the impact force allowing for stronger impact force for difficult batches or materials.



t/mm phi/m	1	2	3	4	5	6	7	8	9over
0.5									
0.8		05Ax1		1Ax1		2Ax1			3Ax1
1.0									
1.5									
2.0		05Ax2		1Ax2		2Ax2			3Ax2
2.5									
3.0									
3.5		05Ax3		1Ax3		2Ax3			3Ax3
4.0									
5.0									
6.0		05Ax4		1Ax4		2Ax4			3Ax4

Adhesion

By adding a strong impact with MAGHAMMER, problems related to powdery adhesion inside the hopper, chute, pipe, etc. are solved effectively.



Control Panels



Model	Q'ty of controllable MagHammer by a controller	Construction	Input	Operation	Impact Force Variable
SB-1A	05Ax3 1Ax2 2Ax1 3Ax1	Indoor use and Dust-proof with case	AC200/220V 50/60Hz 3phases	Auto or Remote Hits variable : 1 to 10 Pause variable: 30sec. to 10min.	50~100%
SB-2A	05Ax6 1Ax4 2Ax2 3Ax2				
SN-1A	05Ax3 2Ax1 3Ax1	Control unit without case		Auto operation By external signal 1hit/1sec.	
SN-2A	05Ax6 1Ax4 2Ax2 3Ax2				

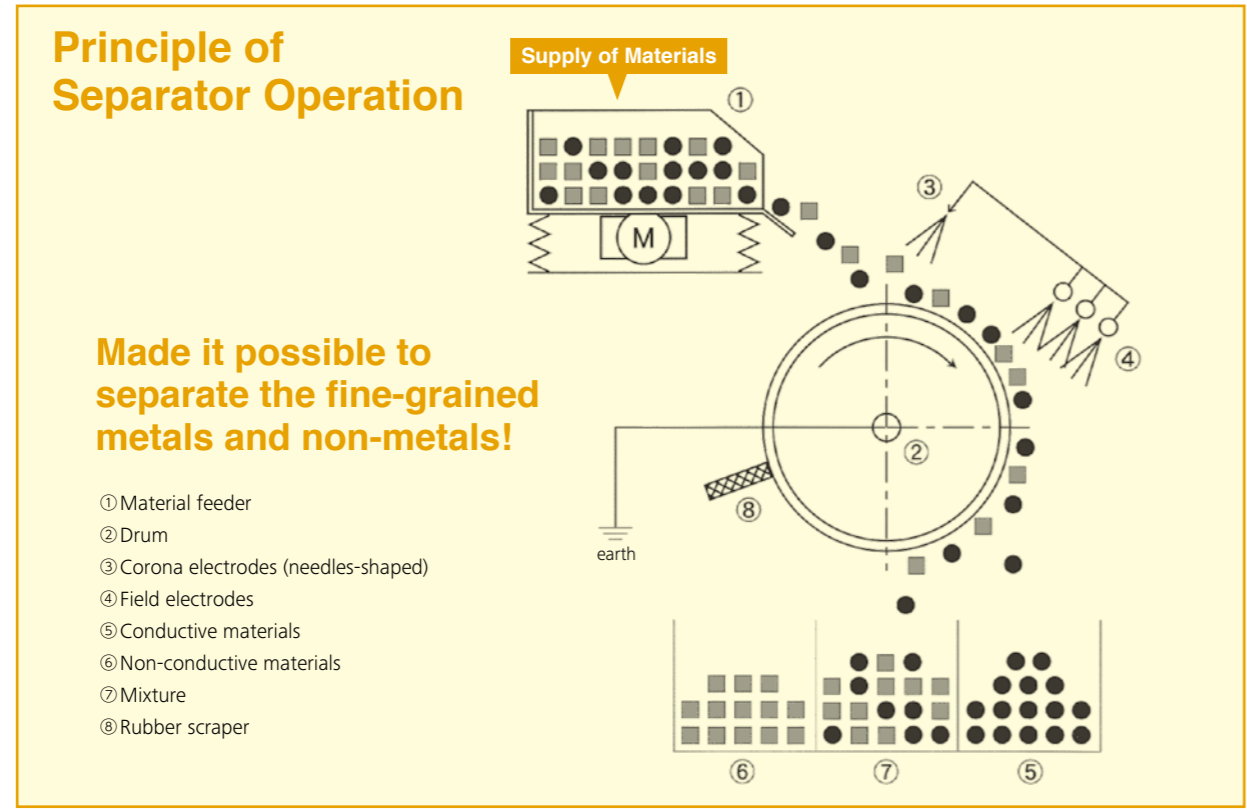
38 Electrostatic Corona Separator Model: ESC

The rotary kiln dryer combines an age-old theory with the most advanced technology and materials, based on NMI's state-of-the-art expertise. The result is an innovative thermal-energy generator for the 21st century.

- Usage**
1. Recovery of copper and aluminum from shredded materials.
 2. Recovery of aluminum and copper from minerals.
 3. Separation of zirconium, rutile, ilmenite, tungsten, etc., from minerals.
 4. Separation of resins and laminate metals.
- Condition of use**
1. Applicable grain size of 0.1 to 5 mm.
 2. Since humidity affects the separation efficiency to a considerable degree, generally the ESCI should be used on dry materials at an ambient humidity of 50% or less.



Active Width: 1500mm
Three-stage type



39 Hand Magnet Model: G-2

For Rapid Pick up of Small Parts!

- Usage**
- Hand Magnetool is big time saver in picking up small parts, screws, nails, etc.
- Features**
1. Durable Aluminum body.
 2. Simple one step discharge.
 3. Light weight of 2.2Kg (4.8Lb.)
- Specifications**
- G-2 Weight / 2.2 kg , Size / W90 X L140 X H220mm



40 Magnet Drum Sweeper Model: RS-1

- Usage**
- Pick up scrap iron and powder continuously with strong magnetic force!!
- Features**
1. Ultra strong attractive force for great results.
 2. Continuously pick up scrap iron.
 3. Maintenance-free, No breakdowns or malfunctions.
- Specifications**
- RS-1 Weight / about 38kg, Active width / 500mm, Total Width / 550mm



41 Magnet Drum Sweeper Model: BS-1

- Usage**
- Pick up scrap iron and powder continuously with strong magnetic force.
- Features**
- Double tube magnet structure makes easy to clean.
- Specifications**
- BS-1 Weight / about 6.0 kg, Active width / 376mm, Total Width / 520mm



- Tube Magnet
- Grate Magnet
- Magnetic Strainer
- Magnet Plate
- Electromagnetic Separator (Dry Type)
- Electromagnetic Separator (Wet Type)
- Stainless Steel Separator
- Magnetic Pulley
- Drum-Type Magnetic Separator
- Suspension Type Permanent Magnetic Separator
- Suspension Type Electromagnetic Separator
- Eddy Current Separator
- Eddy Current Separator System
- Can Separator
- Press Machine
- Lifting Magnet
- Maghammer
- Electrostatic Corona Separator
- Other Magnetic Separators

42 Magnetic Sweeper for the forklift Model: FS-1

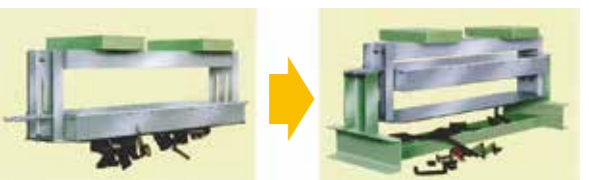
Usage
Easy installation to the forklift arm lend this unit to wide range of maneuvers for quick cleaning of parking lots, construction sites, manufacturing floors, roads and more.

Features

1. Strong magnetic force collects small iron pieces.
2. Forklift covers wide range of cleaning area quickly.

Specifications

1. Dedicated Platform
2. Modification to custom design upon request



Video available on our website

43 Electromagnetic positioner Model: Magposi

Usage
Positioning complicated cast and mold parts for final finish.

Features

1. Electromagnetized steel balls (OD 0.1-3mm) holds any shape.
2. Easy step operation for on-off.

Model	Size (mm)	Weight(kg)
MP-4	400Wx400Lx100H	120
MP-7	700Wx700Lx100H	350



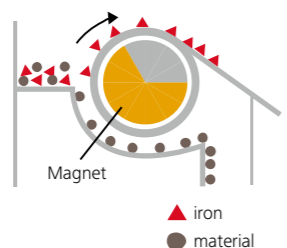
Video available on our website

44 Drum Coolant Separator

Usage
Separation and cooling off of iron particles from coolant oil of grinder machine. Works perfectly with any type of coolant oil.

Features

1. Compact design and high efficiency
2. Magnetic Drum Mechanism



Model	Throughput (ℓ/min)	Drum Diameter (mm)	Drum Width (mm)	Drum Surface (Gauss)	Weight (kg)
CSH-80	80	φ101.6	200	6,000	20
CSH-120	120	φ101.6	300	6,000	36
CSH-180	180	φ165	315	4,000	80
CSH-300	300	φ165	400	4,000	95
CSH-500	500	φ165	700	4,000	120



To Nippon Magnetics, Inc. FAX: +81-92-922-7162 E-Mail: info@nmi-jpn.com
To Nippon Magnetics USA, Inc. FAX: +1-310-533-8290 E-Mail: sales@nipponmagnetics.com

Magnetic Separator Selection table(1)

☆Customer Information☆

Company name			
Contact name		Affiliation department	
Address			
Phone number		Fax number	
E-Mail			

☆Material Specification☆

Material		Particle size	mm	Temperature	℃
Capacity	(t/h · m ² /h)	Bulk density		Liquidity	<input type="checkbox"/> Good <input type="checkbox"/> Usualy <input type="checkbox"/> Bad
Moisture	wt%	Angle of repose		Iron size etc.	

☆Model you want to consider☆

Model	<input type="checkbox"/> Bar Magnet	<input type="checkbox"/> Grate Magnet	<input type="checkbox"/> Magnet Atrainer	<input type="checkbox"/> Magnet Plate	<input type="checkbox"/> Other
Magnetic flux density (Bar Magnet)	<input type="checkbox"/> 15000G	<input type="checkbox"/> 14000G	<input type="checkbox"/> 12000G	<input type="checkbox"/> 11000G	<input type="checkbox"/> 10000G <input type="checkbox"/> 3000G
Magnetic flux density (Magnet Plate)	<input type="checkbox"/> 4500G	<input type="checkbox"/> 1500G	<input type="checkbox"/> 10000G(Barrier Stop)	<input type="checkbox"/> 4000G(Barrier Stop)	
Material	<input type="checkbox"/> SUS304	<input type="checkbox"/> SUS316L	<input type="checkbox"/> Titanium	<input type="checkbox"/> Other ()	
Surface finish	<input type="checkbox"/> Pickling	<input type="checkbox"/> Buffing (#)	<input type="checkbox"/> Other ()		
Connection size	<input type="checkbox"/> Flange(A)	<input type="checkbox"/> Ferrule(S)	<input type="checkbox"/> Other()		
Double pipe	<input type="checkbox"/> with <input type="checkbox"/> withou	Number of magnets	Pcs	Number of stages	Stege

Other

To Nippon Magnetics, Inc. FAX: +81-92-922-7162 E-Mail: info@nmi-jpn.com
 To Nippon Magnetics USA, Inc. FAX: +1-310-533-8290 E-Mail: sales@nipponmagnetics.com

Magnetic Separator Selection table(2)

☆Customer Information☆

Company name			
Contact name		Affiliation department	
Address			
Phone number		Fax number	
E-Mail			

☆Material Specification☆

Material		Particle size	mm	Temperature	℃
Capacity	(t/h · m ³ /h)	Bulk density		Liquidity	<input type="checkbox"/> Good <input type="checkbox"/> Usualy <input type="checkbox"/> Bad
Moisture	wt%	Iron size etc.			

☆Equipment specification☆

Belt conveyor width	mm	Belt conveyor speed	m/min	Installation angle	
Trough angle		Layer thickness	mm	Other	

☆Model you want to consider☆

Model	<input type="checkbox"/> PUF <input type="checkbox"/> HUF,NUF,HLS <input type="checkbox"/> ENS,REN <input type="checkbox"/> ALS <input type="checkbox"/> Other
Type	Quantity
Power supply	AC V Hz Magnetic force (permanent magnet) <input type="checkbox"/> Standard <input type="checkbox"/> High magnetic force
Control panel	<input type="checkbox"/> Necessary <input type="checkbox"/> Unnecessary Installation location
Other	

To Nippon Magnetics, Inc. FAX: +81-92-922-7162 E-Mail: info@nmi-jpn.com
 To Nippon Magnetics USA, Inc. FAX: +1-310-533-8290 E-Mail: sales@nipponmagnetics.com

Maghammer Selection table

☆Customer Information☆

Company name			
Contact name		Affiliation department	
Address			
Phone number		Fax number	
E-Mail			

☆Material Specification☆

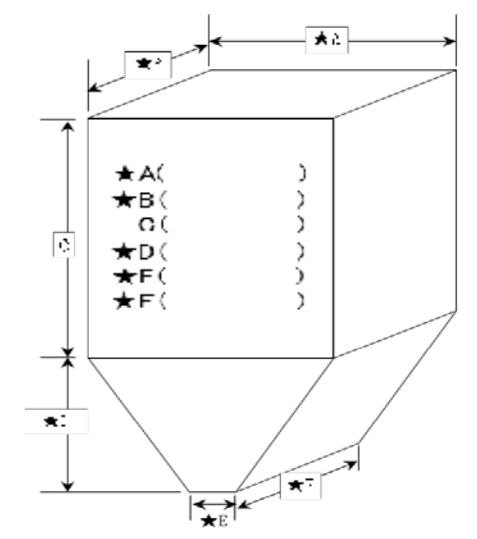
Material		Remarks	
Bulk density	Particle size	Liquidity	<input type="checkbox"/> Good <input type="checkbox"/> Usualy <input type="checkbox"/> Bad
Temperature	℃	Moisture	% Adhesion <input type="checkbox"/> Many <input type="checkbox"/> Usualy <input type="checkbox"/> Few

☆Target equipment☆

Facility situation	<input type="checkbox"/> Newly estab <input type="checkbox"/> Eexdisting
Mounting place	<input type="checkbox"/> Hopper <input type="checkbox"/> Shoot <input type="checkbox"/> Other ()
Shape	<input type="checkbox"/> Round <input type="checkbox"/> Angular <input type="checkbox"/> Other ()
Plate thickness	mm
Material	<input type="checkbox"/> SS <input type="checkbox"/> SUS <input type="checkbox"/> Other ()
Inner surface lining	<input type="checkbox"/> None <input type="checkbox"/> Present (Concretely:)
Status of clogging	<input type="checkbox"/> Bridge <input type="checkbox"/> Arching <input type="checkbox"/> Rat Hole <input type="checkbox"/> Adhesion <input type="checkbox"/> Fixation <input type="checkbox"/> Other ()
Time of clogging	<input type="checkbox"/> Starting <input type="checkbox"/> Driving <input type="checkbox"/> other ()
Current remedy	<input type="checkbox"/> None <input type="checkbox"/> Present () <input type="checkbox"/> Iron hammer <input type="checkbox"/> Plastic hammer (kg, lb)
Installation location	<input type="checkbox"/> Indoor <input type="checkbox"/> Outdoors
Installation environment	<input type="checkbox"/> Multi dust <input type="checkbox"/> High temperature
Ambient temperature	℃
Ambient temperature	v
Remarks	

Dimension table
 ※In case of adhesion, fill in the attachment position.

Hopper Shoot



Piping
 ※Please fill in the details in the remarks column.

Size ()
 Piping thickness ()
 Piping length ()

★:Please fill in as much as possible.