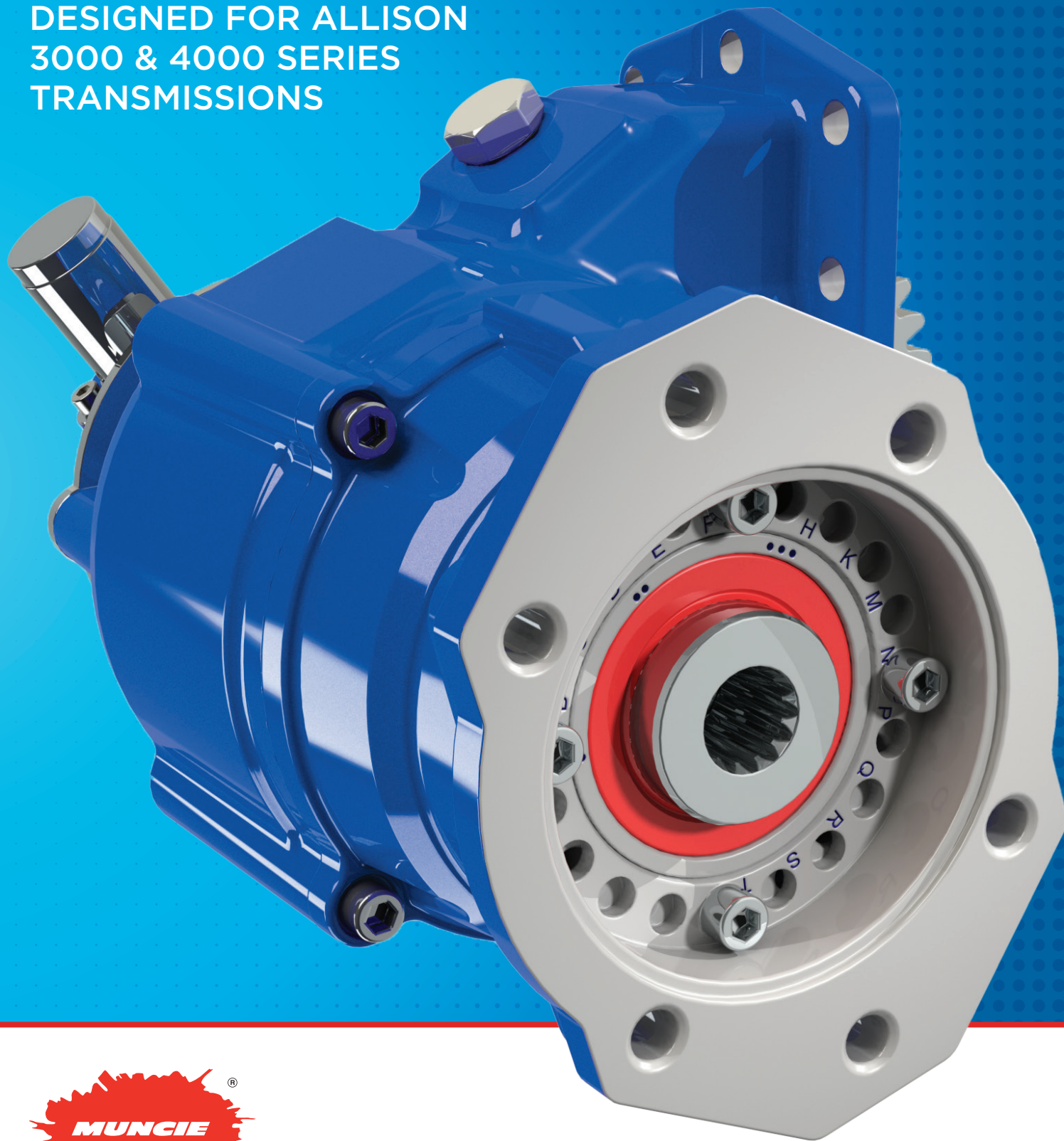


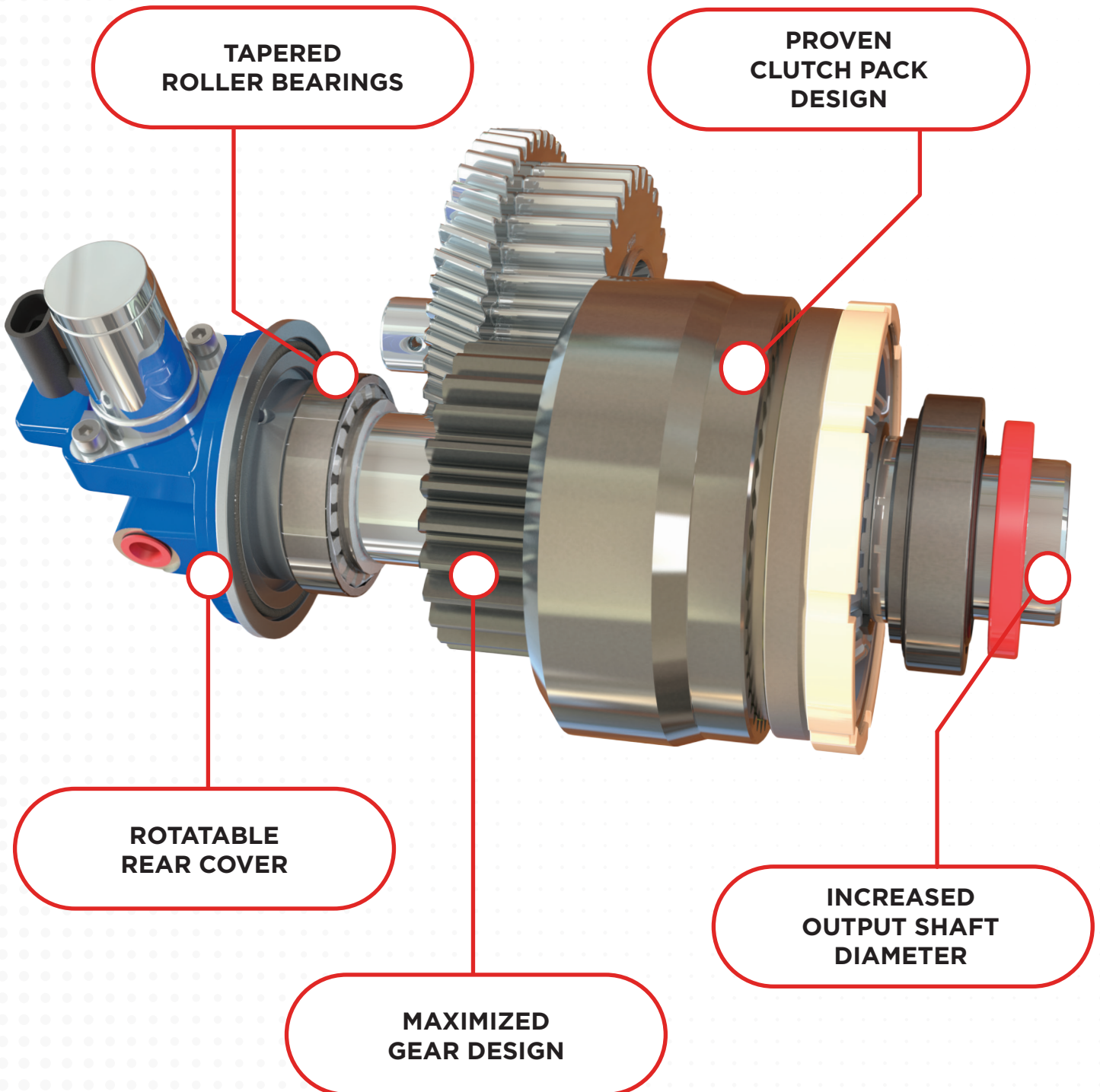
# A20 SERIES POWER TAKE-OFF

DESIGNED FOR ALLISON  
3000 & 4000 SERIES  
TRANSMISSIONS



## A20 SERIES POWER TAKE-OFF

**THE A20 IS THE NEW 10-BOLT MEDIUM-DUTY, CLUTCH SHIFT PTO** rated for up to 415 lbs.ft. torque intermittent/continuous and features various product improvements allowing for easier installation and a more durable PTO for Allison 3000 and 4000 Series transmissions.



## KEY FEATURES

- New rotatable pump flange
- Increased clearance for easier installation
- Shift cover allowing 360-degree rotation
- Proven clutch pack design
- Tapered roller bearings increasing PTO life
- Increased output shaft diameter for higher durability
- Reduced leak paths
- Maximized gear design for noise reduction
- Single intermittent/continuous torque rating
- Three housing arrangements
- Extended length PTO mounting fasteners
- Compatible with EX Drive shaft extension
- Available with **Muncie Start®** to eliminate torque spikes
- Tool kit available for easier installation

## INSTALLATION TOOL KIT

Tool kit specifically created for proper installation of Muncie Power Products' A20 Series PTOs.

Kit is available upon order and includes all essential tools to properly install PTOs.

- **Kit # 49TK6580:** Torque wrench, tool bag, and all required tools
- **Kit # 49TK6581:** Tool bag and all required tools (minus torque wrench)

## TARGET MARKETS

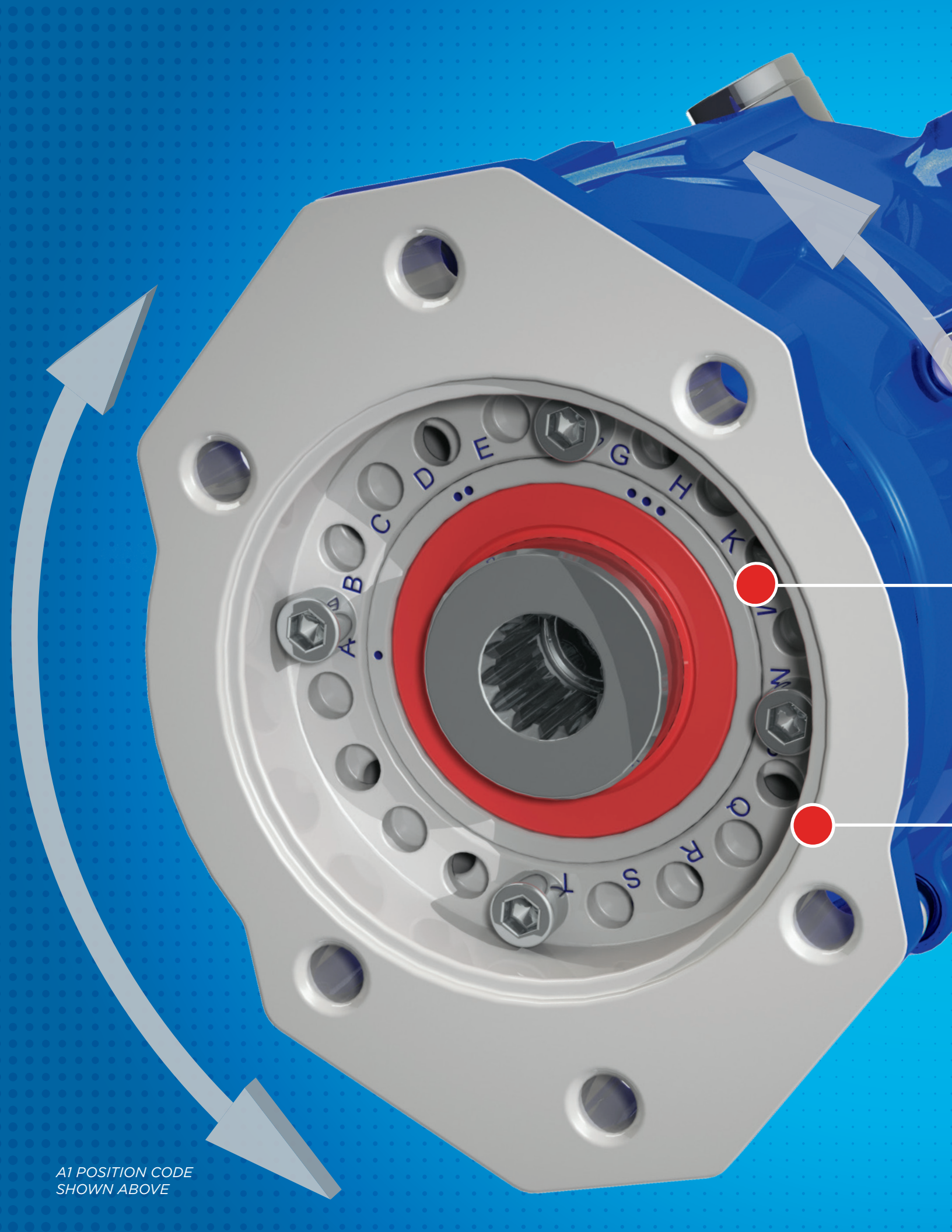
- Class 7–8 trucks with automatic transmissions
- Dump
- Fire
- Refuse
- Utility
- Tow & Recovery
- Snow & Ice
- Bulk Hauling

## PTO TORQUE & HORSEPOWER RATINGS

SPEED RATIO	3000 SERIES ENGINE %	4000 SERIES ENGINE %	INTERMITTENT/ CONTINUOUS HP (KW) @ 1,000 RPM	INTERMITTENT/ CONTINUOUS TORQUE LBS.FT. (NM)
05	74 %	105 %	77 (57)	400 (542)
06	85 %	122 %	77 (57)	400 (542)
07	99 %	141 %	79 (59)	415 (563)
08	114 %	163 %	69 (51)	360 (488)
09	122 %	175 %	65 (48)	340 (461)
10	131 %	187 %	59 (44)	310 (420)
11	151 %	215 %	52 (39)	275 (373)
12	162 %	231 %	50 (37)	265 (359)
15	201 %	287 %	39 (29)	205 (278)

Approximate Weight: 47.2 lbs. (21.4 Kg.)





A1 POSITION CODE  
SHOWN ABOVE

A detailed 3D rendering of a blue A20 Series PTO (Power Take-Off) housing. The housing is shown from a side-rear perspective, highlighting its complex shape and various mounting points. A large, grey, multi-toothed gear is visible on the right side, partially obscured by the housing. The background is a solid blue color with a subtle pattern of small white dots. A white curved arrow points from the bottom left towards the PTO housing. Two white callout lines originate from a circular inset on the left side of the housing, pointing towards the text blocks on the right. The text blocks are set against a white background with a red header bar.

# A20 SERIES PTO

## EASIER INSTALLATION

- New rotatable flange for easy pump mounting
- Housing design allows for easier access to mounting bolts
- Extended mounting bolts
- No external hoses to work around
- Installation tool kit available

## ROTATABLE FLANGE

- Stamped with position codes
- 30 unique positions allows for optimal clearance
- More flexibility when mounting pumps
- Flange is easily adjustable without seal disturbance
- Can be shipped loose or at a specific position code for quicker mounting

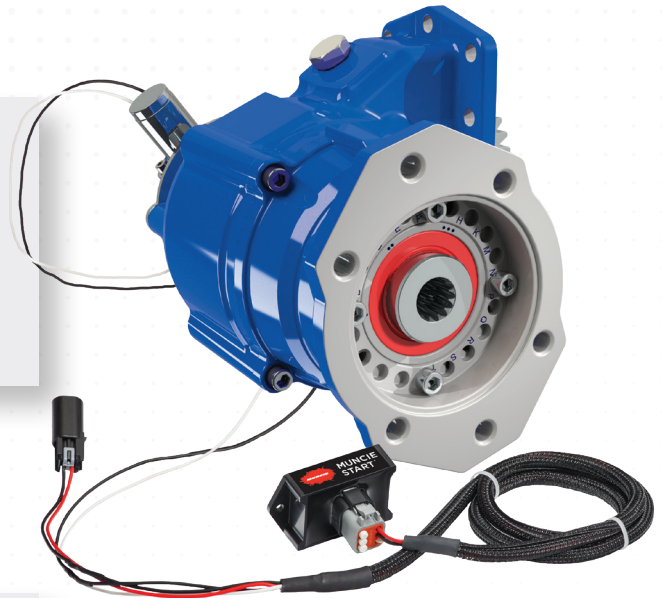


## MUNCIE START®

Use Shift Code:

SX – **Muncie Start**® 12VDC Integral

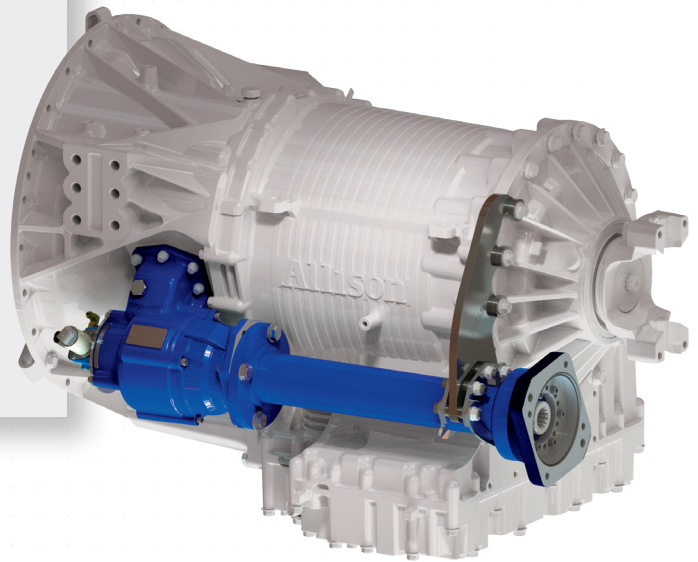
SR – **Muncie Start**® 12VDC Remote Mount



## EX DRIVE SHAFT EXTENSION

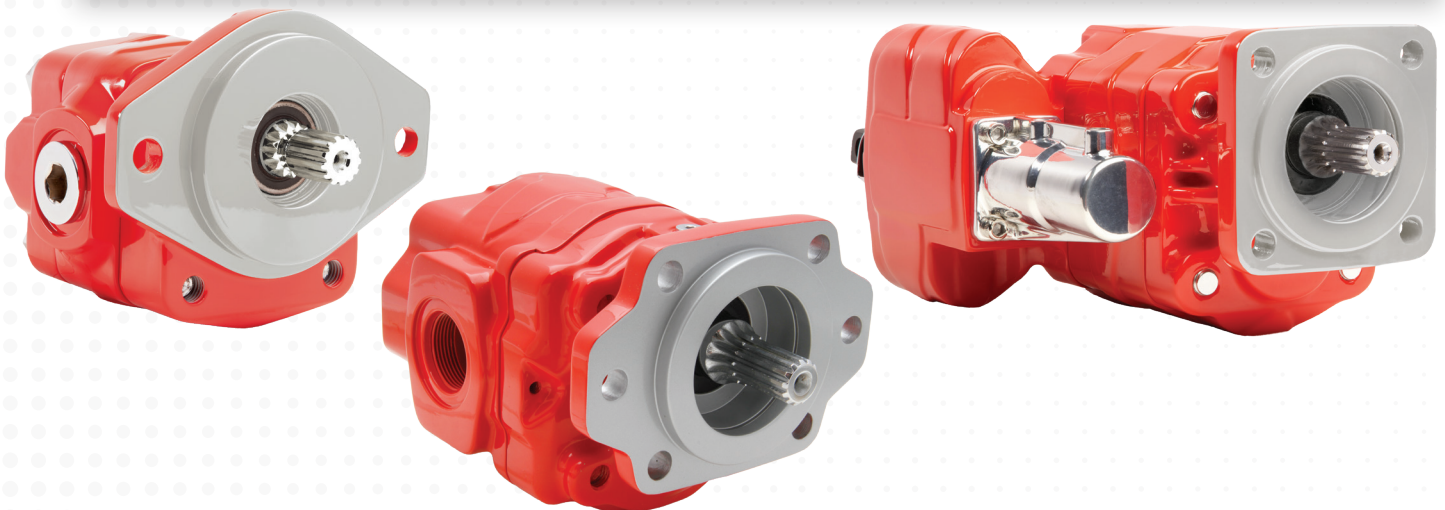
Designed to fit on Allison 3000 and 4000 Series transmissions with or without a retarder or cooler, allows for large gear or piston pumps to be direct mounted.

This ability to be direct mounted eliminates the need for timely driveline installations. Providing maximum torque from the PTO, the shaft extension is available for the A20 Series PTOs.



## COMPATIBLE PUMPS

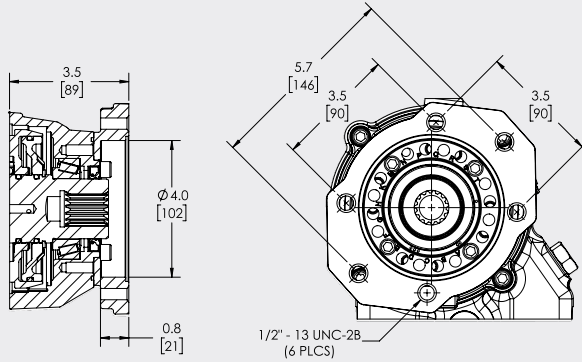
The A20 Series PTOs are compatible with numerous Muncie Power gear pumps. Gear pumps are available in a wide variety of pump sizes and designs dependent on your application requirements. With bushing design, roller bearing design, and the availability to fit small to high flow rates, our pumps are designed to improve system reliability.



## OUTPUT OPTION DIMENSIONS

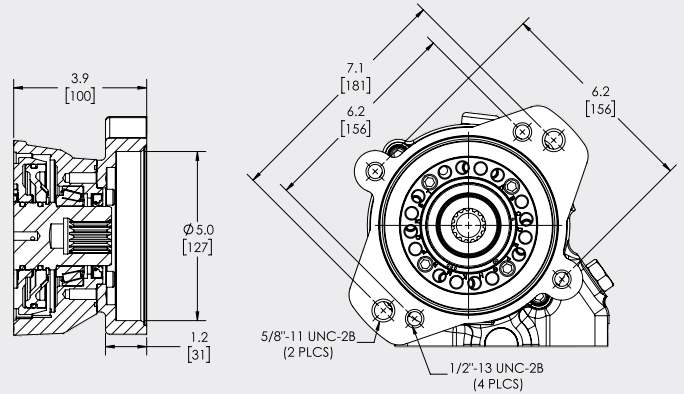
### SAE "B" 2- & 4- BOLT FLANGE

"BB" OUTPUT - SAE "B" 7/8" - 13T SHAFT  
 "CB" OUTPUT - SAE "C" 1 1/4" - 14T SHAFT  
 "PB" OUTPUT - SAE "BB" 1" - 15T SHAFT  
 "ZB" OUTPUT - SAE "C" 1 1/4" - 14T SHAFT



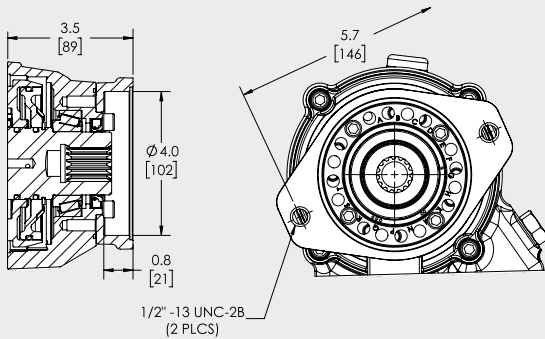
### SAE "C" 2- & 4-BOLT FLANGE

"CC" OUTPUT - SAE "C" 1 1/4" - 14T SHAFT



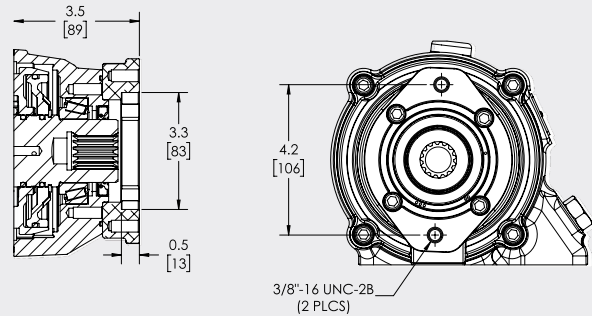
### SAE "B" 2-BOLT FLANGE

"BS" OUTPUT - SAE "B" 7/8" - 13T SHAFT  
 "PS" OUTPUT - SAE "BB" 1" - 15T SHAFT



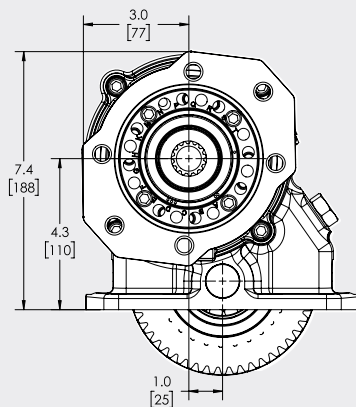
### SAE "A" 2-BOLT FLANGE

"AA" OUTPUT - SAE "A" 5/8" - 9T SHAFT  
 "BA" OUTPUT - SAE "B" 7/8" - 13T SHAFT  
 "TA" OUTPUT - SAE 3/4" - 11T SHAFT

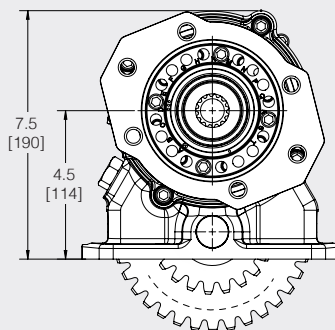


## ASSEMBLY ARRANGEMENT DIMENSIONS

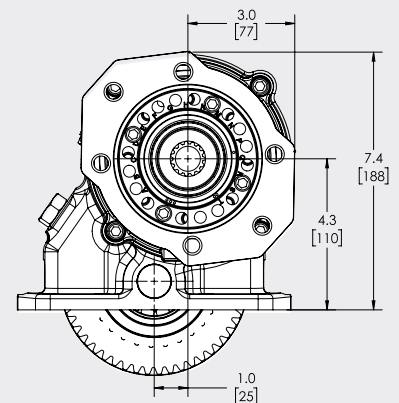
"3" Arrangement



"5" Arrangement



"1" Arrangement



# A20-A10 07-HX 3 BB PX XX

## MODEL

A20 – Allison Clutch Shift 10-Bolt

## TRANSMISSION GEAR

A10 – Allison 3000 and 4000 Series

## INTERNAL RATIO

05 – .54:1 Output Speed

06 – .63:1

07 – .73:1

08 – .84:1

09 – .90:1

10 – .97:1

11 – 1.11:1

12 – 1.19:1

15 – 1.48:1

## SHIFT TYPE

HX – Elec/Hyd 12V

HR – Elec/Hyd 12V Remote Mount

JX – Elec/Hyd 24V

JR – Elec/Hyd 24V Remote Mount

SX – Muncie Start® 12V

SR – Muncie Start® 12V Remote Mount

XX – Elec/Hyd without activation components

HH – Elec/Hyd 12V Hino 2020 and prior

H2 – Elec/Hyd 12V Hino 2021

## ASSEMBLY ARRANGEMENT

1 – Right Side Shaft Low

3 – Left Side Shaft Low

5 – Top/No Offset (straight out from opening)

## FLANGE POSITION CODE\*\*

A1-T3 – Custom Flange Position

XX – Flange Shipped Loose

Blank – Default Position

## SPECIAL FEATURES

PX – Standard Hose Kit

BX – Hose Kit for Top Opening

US – Pulse Generator & SPD-1001

UX – Pulse Generator & Standard Hose Kit

UB – Pulse Generator & Top Hose Kit

XX – Hose Delete Kit

PW – Wet Spline & Standard Hose Kit

*Note: Use with Shaft Extensions*

## OUTPUT TYPE

1X – 1¼" Round Shaft

2I – DIN 5462 with Tapped Hole

AA – SAE "A" 5/8" -9T, 2-Bolt SAE-"A"

BA – SAE "B" 7/8" -13T, 2-Bolt SAE-"A"

BB – SAE "B" 7/8" -13T, 2- & 4-Bolt SAE-"B"

BS – SAE "B" 7/8" -13T, 2-Bolt SAE-"B"

CB – SAE "C" 1¼" -14T, SAE-"B"

*Note: Used with Shaft Extensions*

CC – SAE "C" 1¼" -14T, 2- & 4-Bolt SAE-"C"

II – DIN 5462

PB – SAE "BB" 1" -15T, 2- & 4-Bolt SAE-"B"

PS – SAE "BB" 1" -15T, 2-Bolt SAE-"B"

TA – ¾"-11T, 2-Bolt SAE-"A"

X2 – DIN 120 Companion

X4 – 1410 Companion

ZB – SAE "C" 1¼" -14T, 2- & 4-Bolt SAE-"B"

## \*\* SPECIAL FLANGE ARRANGEMENT

For proper code selection adjust flange to the ideal position and note the letter that aligns centered with the marked dots.

*Example A1 or T3*



A Member of the Interpump Group

MP21-01 (Rev. 01-21)

201 East Jackson Street • Muncie, Indiana 47305  
800-367-7867 • Fax 765-284-6991 • info@munciepower.com • www.munciepower.com

Specifications are subject to change without notice. Visit [www.munciepower.com](http://www.munciepower.com) for warranties and literature. All rights reserved. © Muncie Power Products, Inc. (2020)