



ESSENTIALS

MULTIMEDIA CONNECT

Innovation background for many years

Since 1993, Multimedia Connect has been a structured cabling system manufacturer designing and producing communication solutions for intelligent buildings, that enhances IP convergence.

Quality & innovation are the directions chosen by Multimedia Connect to offer accurate cabling from Enterprise to Datacenter.



Headquarter



Bare fiber factory

INNOVATION

Since its creation, Multimedia Connect has always been at the forefront of product innovation. We were among the first manufacturers to certify a Category 6 connector (in 2002) and a Category 6a (ISO) connector (in 2010).

«In addition to the performance of our systems, our R&D efforts are focused on designing solutions which facilitate installers and end-users work».

KEEP IT SIMPLE

With Multimedia Connect, technology means simplicity. «We are pioneer in the development of tool less termination and our objective is to invent products and systems which are easy to install and easy to manage».

THE OPPORTUNITIES OF IP CONVERGENCE

The development of IP (Internet Protocol) in applications such as CCTV, Access Control, Public Address, Video, Audio ... means that structured cabling systems are now used in a large variety of new environments.

At Multimedia Connect, we have identified this fundamental trend of our industry and we are developing specific products and systems which facilitate the convergence between cabling infrastructures and these new IP applications.



COPPER SYSTEM

page 4 - 10



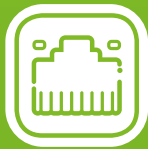
FIBER SYSTEM

page 11 - 17



RACKS SYSTEM

page 18 - 25



COPPER SYSTEM

COPPER CABLE

CATEGORY 5E CABLE	5
CATEGORY 6 CABLE	5
CATEGORY 6A & 7 CABLE	5
CATEGORY 7A & 8 CABLE	5

COPPER CONNECTIVITY

19" PATCH PANEL IV	6
FACEPLATE IV	6
BCTL RANGE	7
BC RANGE	7
LINK+ RANGE	7
CATEGORY 6 LOADED 19" PATCH PANEL	8
19" PATCH PANEL	8
FACEPLATE AND WALL MOUNTING BOX	8
ANGLED CATEGORY 6A RJ45 PLUG	9
CATEGORY 6A TOOLESS RJ45 PLUG	9
CATEGORY 6A MULTI APPLICATION PLUG	9
RJ45 LOCKING SYSTEM FOR RJ45 PORT	9
CATEGORY 6A RJ45 PATCHCORD - COMPONENT LEVEL	10
CATEGORY 6A RJ45 PATCHCORD - LINK COMPLIANT	10
CATEGORY 6A RJ45 LED PATCHCORD	10

COPPER SYSTEM

Copper cable

CATEGORY 5e CABLE



VGB45SH

DESCRIPTION	DRUM 500 M		BOX 305 M	CPR LEVEL
	4P	2 X 4P		
Cat5e U/UTP cable LSZH	VGB45SH	VGB85SH	VGB4SHB	Dca
Cat5e U/UTP cable PVC	VGB45	VGB85	VGB4B	Eca
Cat5e F/UTP cable LSZH	SGB45SH	-	SGB4SHB	Dca

CATEGORY 6 CABLE



VG64SH5



VG64PE

DESCRIPTION	DRUM 500 M		DRUM 1000 M		BOX 305 M	CPR LEVEL
	4P	2 X 4P	4P	2 X 4P		
Cat6 U/UTP cable 350 MHz LSZH	VG64SH5*	VG68SH5	-	-	VG64SHB	Dca / Cca
Cat6 U/UTP cable 250 MHz PVC	VG645	-	-	-	VG64B	Eca
Cat6 U/UTP cable 350 MHz PE	VG64PE5	-	VG64PE	-	-	Fca
Cat6 F/UTP cable 350 MHz LSZH	CX64SH5	CX68SH5	-	-	CX64SHB	Dca / Cca
Cat6 F/UTP cable 350 MHz PE	-	-	CX64PE	-	-	Fca

* For a Cca level, add **C** letter at the end of the P/N

CATEGORY 6A & 7 CABLE



F6004SHC5



5254SH5

DESCRIPTION	DRUM 500 M		CPR LEVEL
	4P	2 X 4P	
Cat6A U/UTP cable 510 MHz LSZH	U5104SH5	-	Dca / Cca
Cat6A F/UTP cable 510 MHz LSZH	FU5104SH5	FU5108SH5	Dca
Cat6A U/FTP cable 525 MHz LSZH	5254SH5*	5258SH5	Dca / Cca / B2ca
Cat6A U/FTP cable 525 MHz LSZH INT/EXT	5254SHINOUT	-	Dca
Cat6A F/FTP cable 555 MHz LSZH	F5554SH5*	F5558SH5	Dca / Cca / B2ca
Cat6A S/FTP cable 500 MHz LSZH white	SF5004SHW*	-	Dca / Cca / B2ca
Cat6A 90W F/FTP cable 600 MHz	F6004SHC5	-	Cca
Cat7 S/FTP cable 600 MHz LSZH	60045SHEV*	60085SHEV	Dca / Cca / B2ca

* For the CPR, add **C** letter for a Cca level or **B2** for a B2ca level at the end of the P/N

CATEGORY 7A & 8 CABLE



SF1200



SF20004SH

DESCRIPTION	DRUM 500 M		CPR LEVEL
	4P	2 X 4P	
Cat7A S/FTP cable 1000 MHz LSZH AWG23	SF10004SH5*	SF10008SH5	Dca / Cca
Cat7A S/FTP cable 1200 MHz LSZH AWG22	SF12004SH5*	SF12008SH5	Dca / Cca
Cat7A S/FTP cable 1200 MHz LSZH AWG22	SF12004SHINOUT	-	Dca
Cat8 S/FTP cable 2000 MHz LSZH AWG23	SF20004SHC5*	-	Cca

* For a Cca level, add **C** letter at the end of the P/N

COPPER SYSTEM

Copper connectivity

19" PATCH PANEL IV



IVPAN1U

ITEMS	DESCRIPTION
IVPAN1U	19" patch panel 24 ports 1U - IV serie
IVDUSTPANx8	Colored dust shutter for IV panel

FACEPLATE IV



IVLOCK45XC



IV450B1C

ITEMS	DESCRIPTION
IVLOCK451C8	Locking faceplate 45x45 for 1 connector - IV serie
IV450B1C	Antibacterial faceplate 45x45 for 1 connector - IV serie

BCTL RANGE

BCTL modular jack Cat6 & Cat6A



BC6FSTLx



BC6AFSTLx

ITEMS	DESCRIPTION
BC6AFSTLxx*	Tooless Cat6A full shielded RJ45 modular jack
BC6ANBTL50	Tooless Cat6A unshielded RJ45 modular jack
BC6FSTLxx*	Tooless Cat6 full shielded RJ45 modular jack

* Replace xx by 8 or 50 for packaging of 8 or 50

BC RANGE

BC modular jack unshielded Cat6



BC6NBX

ITEMS	DESCRIPTION
BC6NBx	Cat6 unshielded RJ45 modular jack

LINK+ RANGE

LK modular jack Cat6 & Cat6A



LK6AFSTL



LK6NBTL

ITEMS	DESCRIPTION
LK6AFSTL8	Tool less Cat6A full shielded RJ45 modular jack
LK6FSTL8	Tool less Cat6 full shielded RJ45 modular jack
LK6NBTL8	Tool less Cat6A unshielded RJ45 modular jack

COPPER SYSTEM

Copper connectivity

CATEGORY 6 LOADED 19" PATCH PANEL



BC6NBPANSB24

ITEMS	DESCRIPTION
BC6NBPANSB24	Loaded Cat6 unshielded 19" patch panel 24 ports 1U
BC6NBPANSB48	Loaded Cat6 unshielded 19" patch panel 48 ports 2U

19" PATCH PANEL



BCPAN1U

ITEMS	DESCRIPTION
BCPAN1U	19" patch panel 24 ports 1U - BC serie
BCPAN1UV48P	19" angled patch panel 48 ports on 1U (to be equipped with BCTL or LK connectivity only)

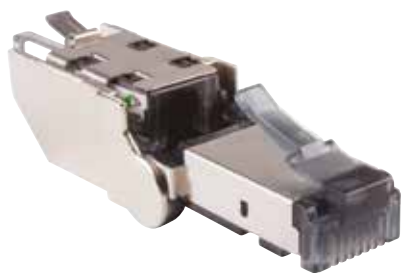
FACEPLATE & WALL MOUNTED BOX



BC861C

ITEMS	DESCRIPTION
BC451C8	Faceplate 45x45 for 1 connector - BC serie
BC452C8	Faceplate 45x45 for 2 connectors - BC serie
BC861C	Faceplate 86x86 for 1 connector - BC serie
BC862C	Faceplate 86x86 for 2 connectors - BC serie
BC864C	Faceplate 86x86 for 4 connectors - BC serie
WP8686PR9003	Surface mounting box 86 x 86 depth 45 mm

ANGLED CATEGORY 6A RJ45 PLUG



PLAG6AFS



ITEMS	DESCRIPTION
PLAG6AFS	Tooless angled Cat6A shielded RJ45 plug for solid core cable
PLAG6ANB	Tooless angled Cat6A unshielded RJ45 plug for solid core cable

CATEGORY 6A TOOLESS LOCKING RJ45 PLUG



PL6AFS

ITEMS	DESCRIPTION
PL6AFS	Cat6A 360° tooless shielded RJ45 plug for solid core cable with locking system
PL6AFSKEY	Key for locking system of PL6AFS

CATEGORY 6A MULTI APPLICATION PLUG



PLST6AFS

ITEM	DESCRIPTION
PLST6AFS	Cat6A full shielded RJ45 plug - Link+ range

RJ45 LOCKING SYSTEM



ITEM	DESCRIPTION
LOCKRJ45R	Locking system for RJ45 port

COPPER SYSTEM

Copper connectivity

CATEGORY 6 AND 6A RJ45 PATCHCORD - COMPONENT LEVEL



CATEGORY	ITEMS	DESCRIPTION
Cat6A	CORD6ASxxMSH*	Cat6A U/FTP MMC RJ45 LSZH patchcord
Cat6	VG504xMSH	Cat6 10G U/UTP MMC RJ45 patchcord - component compliant LSZH or PVC version

* Replace x by 0.5/1/2/3 or 5 for different length

CATEGORY 6 AND 6A RJ45 PATCHCORD - LINK COMPLIANT



ITEMS	DESCRIPTION
CORD6ASFxxMSH	Cat6A S/FTP RJ45 LSZH patchcord
CORD6AULxMSH	Cat6A U/UTP RJ45 LSZH patchcord
CORD6FxxM*	Cat6 F/UTP RJ45 patchcord
CORD6UxxM*	Cat6 U/UTP RJ45 patchcord

* Replace x by 0.5/1/2/3 or 5 for different length

CATEGORY 6A RJ45 LED PATCHCORD



ITEMS	DESCRIPTION
CORD6ASxxLED	Cat6A S/FTP RJ45 LSZH LED patchcord
LEDTOOL	Injector for LED patchcord



FIBER SYSTEM

FIBER OPTIC CABLES

INDOOR/OUTDOOR TIGHT BUFFERED LSZH MULTI IE RANGE	12
INDOOR/OUTDOOR CENTRAL LOOSE TUBE LSZH INTEX RANG	12
INDOOR CENTRAL LOOSE TUBE FIBERGLASS YARN PROTECTION HDPE EXTCT RANGE	12
OUTDOOR CENTRAL LOOSE TUBE STEEL TAPE ARMoured HDPE EXTALCT RANGE	12

FIBER OPTIC CONNECTIVITY

FAN OUT KITS FOR LOOSE TUBE FIBER CABLES	13
OPTICAL CONNECTORS	13
OPTICAL ADAPTERS	14
IP65 ABS WALLBOXES	14
TTPANEL 1U	15
TRANSFORMER PANEL 1U	15
19" UNLOADED REMOVABLE FRONT PLATES FOR TRANSFORMER PANEL	15
PIGTAILS LOOSE TUBE VERSION	15
SPLICE TRAY & HEATSHRINKS	15
READY TO SPLICE MODULAR FIBER PANELS	16
DUPLEX OPTICAL PATCHCORDS LSZH	16

FIBER OPTIC PRETERMINATED LINKS

CLASSICAL RANGE FOR LAN BUILDING NETWORKS	17
COMPACT RANGE FOR DATA CENTER NETWORKS	17
MTP® RANGE FOR SAN HIGH DENSITY NETWORKS	17

FIBER SYSTEM

Fiber optic cables

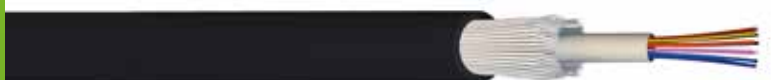
Fiber cables are delivered on 2000/4000 or 6000m reels or cut on demand (minimum length for a cut = 100 m)
For any other fiber count please contact your local distributor.

INDOOR/OUTDOOR TIGHT BUFFERED LSZH - MULTI IE



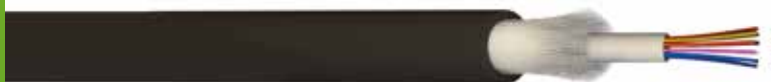
DESCRIPTION	OM3	OM4	OM5	OS2	CPR LEVEL
6 fibers, tight buffered - in/out LSZH	MULTI6IEOM3C	MULTI6IEOM4C	On demand	MULTI6IEOS2C	Cca
12 fibers, tight buffered- in/out LSZH	MULTI12IEOM3C	MULTI12IEOM4C	On demand	MULTI12IEOS2C	Cca
24 fibers, tight buffered - in/out LSZH	MULTI24IEOM3C	MULTI24IEOM4C	On demand	MULTI24IEOS2C	Cca

INDOOR/OUTDOOR CENTRAL LOOSE TUBE LSZH - INTEX



DESCRIPTION	OM3	OM4	OM5	OS2	CPR LEVEL
6 fibers, loose tube - in/out LSZH	INTEX6IEOM3C	INTEX6IEOM4C	On demand	INTEX6IEOS2C	Cca
12 fibers, loose tube - in/out LSZH	INTEX12IEOM3C	INTEX12IEOM4C	On demand	INTEX12IEOS2C	Cca
24 fibers, loose tube - in/out LSZH	INTEX24IEOM3C	INTEX24IEOM4C	On demand	INTEX24IEOS2C	Cca

OUTDOOR CENTRAL LOOSE TUBE FIBERGLASS YARN PROTECTION HDPE - EXTCT



DESCRIPTION	OM3	OM4	OS2	CPR LEVEL
6 fibers, loose tube - Ext fiberglass yarns PEHD	EXTCT6OM3	EXTCT6OM4	EXTCT69125	Fca
12 fibers, loose tube - Ext fiberglass yarns PEHD	EXTCT12OM3	EXTCT12OM4	EXTCT129125	Fca
24 fibers, loose tube - Ext fiberglass yarns PEHD	EXTCT24OM3	EXTCT24OM4	EXTCT249125	Fca

OUTDOOR CENTRAL LOOSE TUBE STEEL TAPE ARMoured HDPE - EXTALCT

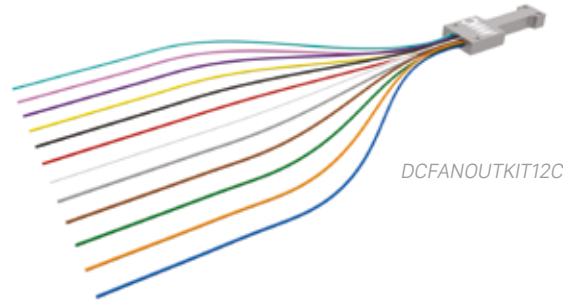


DESCRIPTION	OM3	OM4	OS2	CPR LEVEL
6 fibers, loose tube - Ext steel tape armoured / PEHD	EXTALCT6OM3	EXTALCT6OM4	EXTALCT69125	Fca
12 fibers, loose tube - Ext steel tape armoured / PEHD	EXTALCT12OM3	EXTALCT12OM4	EXTALCT129125	Fca
24 fibers, loose tube - Ext steel tape armoured / PEHD	EXTALCT24OM3	EXTALCT24OM4	EXTALCT249125	Fca

FIBER SYSTEM

Fiber optic connectivity

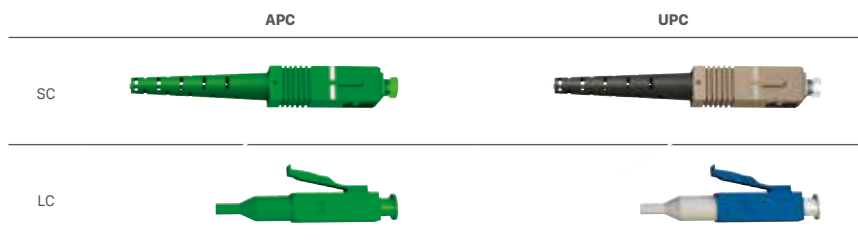
DC FAN OUT AND MICRO FAN KIT FOR LOOSE TUBE FIBER CABLES



ITEMS	DESCRIPTION
IDEAL FOR DATA CENTERS	
DCFANOUT KIT 12C	DC Fanout kit for 12 fibers
DCFANOUT KIT 24C	DC Fanout kit for 24 fibers
48CRIMPTOOLUNIV	Crimp tool for DC Fanout kits
IDEAL FOR TRANSFORMER PANEL	
MICROFANOUT KIT12C	Micro fanout kit for 12 fibers
MICROFANOUT KIT 24C	Micro fanout kit for 24 fibers
48CRIMPTOOLMICRO	Crimp tool for Micro Fanout kits

OPTICAL CONNECTORS

Packaging of 6 or 100 pcs



DESCRIPTION	MULTIMODE		SINGLEMODE	
	SIMPLEX	DUPLEX	SIMPLEX	DUPLEX
SC-UPC Connector	48MMCSCS	48MMCSCD	48SMCSCS	48SMCSCD
LC-UPC Connector	48MMCLCS	48MMCLCD	48SMCLCS	48SMCLCD
SC-APC Connector	-	-	48SMCSCAS	48SMCSCAD
LC-APC Connector	-	-	48SMCLCAS	48SMCLCAD

Note : For 100 pcs packaging : please write «100» after the regular part number.

FIBER SYSTEM

Fiber optic connectivity

OPTICAL ADAPTERS

Packaging of 6 pcs



48SMTSCASFL



48SMTSCD



48MMTSCSISSFL

DESCRIPTION	MULTIMODE				SINGLEMODE			
	SIMPLEX	SIMPLEX FLANGELESS	DUPLEX	DUPLEX FLANGELESS	SIMPLEX	SIMPLEX FLANGELESS	DUPLEX	DUPLEX FLANGELESS
SC	48MMTSCS	48MMTSCSFL	48MMTSCD	48MMTSCDFL	48SMTSCS	48SMTSCSFL	48SMTSCD	48SMTSCDFL
SC shuttered	48MMTSCSISS	48MMTSCSISSFL	-	-	48SMTSCSISS	48SMTSCSISSFL	-	-
SC-APC	On demand	-	-	-	48SMTSCAS	48SMTSCASFL	48SMTSCAD	48SMTSCADFL
SC-APC shuttered	On demand	-	-	-	48SMTSCASISS	48SMTSCASISSFL	-	-



48MMTLCD



48SMTLCDFL



48SMTLCQISFLLZ

DESCRIPTION	MULTIMODE				SINGLEMODE			
	DUPLEX	DUPLEX FLANGELESS	QUAD	QUAD FLANGELESS	DUPLEX	DUPLEX FLANGELESS	QUAD	QUAD FLANGELESS
LC	48MMTLCD	48MMTLCDFL	48MMTLCQ	48MMTLCQFL	48SMTLCD	48SMTLCDFL	48SMTLCQ	48SMTLCQFL
LC shuttered	On demand	48MMTLCDISFLLZx	-	48SMTLCQISFLLZ*	-	48SMTLCDISFLLZ	-	48SMTLCQISFLLZ
LC - APC	-	-	-	-	48SMTLCAD	48SMTLCADFL	48SMTLCAQ	48SMTLCAQFL
LC - APC shuttered	On demand	-	-	-	48SMTLCADISFLLZ	-	-	48SMTLCAQISFLLZ

Replace **x** by **A** for aqua (OM3), **EV** for Erica Violet (OM4), **LG** for Lime Green (OM5)

IP65 ABS WALLBOXES

Individual packaging



ITEMS	DESCRIPTION
48BMOP24IP65PN	IP65 optical wallbox for 12 fibers ST or SC or 24 fibers LC
48BMOP48IP65PN	IP65 optical wallbox for 24 fibers ST or SC or 48 fibers LC

TTPANEL 1U

Telescopic ABS panel against salt and corrosion

Telescopic rail, integrated routing, light weight



ITEMS	DESCRIPTION
TT1U24SCSLCD	Telescopic ABS panel 1U for 24 SCS or LCD
TT1U16SCDLCQ	Telescopic ABS panel 1U for 16 SCD or LCQ
TT1U24SCDLCQ	Telescopic ABS panel 1U for 24 SCD or LCQ
TTFU24SCDLCQDLV	Alternative front plate 24 SCD/LCQ vertical ports

TRANSFORMER PANEL 1U

Universal metal sliding modular panel



Multimedia Connect offers ready to use fiber panel, with :

- Maximum modularity optimale thanks to removable front plates
- Easy ID with label ports integrated to the faceplates
- High density via adapters or MTP[®] cassettes at front or rear
- Customized service with ready to splice assembled panels
- 25 years warranty on MTP[®] cassettes & preterminated fiber links

ITEMS	DESCRIPTION
CH1U	Empty sliding chassis for fiber panel, 1U grey

* to be assembled with the front plates below

19" UNLOADED REMOVABLE FRONT PLATES FOR TRANSFORMER PANEL

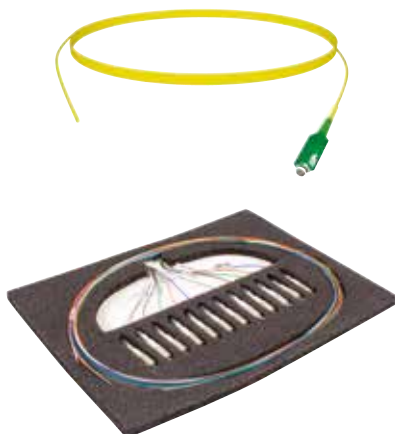


ITEMS	DESCRIPTION
FU1U24SCSLCD	Unloaded front plate for 24 SCS / LCD
FU1U48SCSLCD	Unloaded front plate for 48 SCS / LCD flangeless adapters
FU1U24SCDLCQ	Unloaded front plate for 24 SCD / LCQ adapters
FU1U3MOD	Unloaded front plate for 3 LGX modules or MTP [®] cassettes
FU1U36SCDLCQDL	Unloaded front plate for 36 SCD / LCQ adapters
FU1U72SCDLCDDL	Unloaded front plate for 72 SCS / LCD flangeless adapters

* for adapters please see page 14

PIGTAILS LOOSE TUBE VERSION

Pigtails 2m



		SC	LC	SC APC	LC APC
OM3	2X6 COLORS	PIGSC20M3B2X6FO	PIGLC20M3B2X6FO	-	-
	12 COLORS	PIGSC20M3B12	PIGLC20M3B12	-	-
OM4	2X6 COLORS	PIGSC20M4B2X6FO	PIGLC20M4B2X6FO	-	-
	12 COLORS	PIGSC20M4B12	PIGLC20M4B12	-	-
OM5	2X6 COLORS	On demand	On demand	-	-
	12 COLORS	On demand	On demand	-	-
OS2	2X6 COLORS	PIGSC20S2B2X6FO	PIGLC20S2B2X6FO	PIGSCA20S2B2X6FO	PIGLCA20S2B2X6FO
	12 COLORS	PIGSC20S2B12	PIGLC20S2B12	PIGSCA20S2B12	PIGLCA20S2B12

For tight buffered add «TB» at the end of P/N

SPLICE TRAY & HEATSHRINKS




ITEMS	DESCRIPTION
48K712F1598	Stackable splice tray for 12 heatshinks or mechanical splice
48K724FO2298	Stackable splice tray for 24 heatshinks or mechanical splice
MANCHONEPI45150	Heatshrink 45 mm
MANCHONEPI60150	Heatshrink 60 mm

FIBER SYSTEM

Fiber optic connectivity

READY TO SPLICE TRANSFORMER MODULAR FIBER PANELS

- Up to 2 hours saved for a qualified technician
- Front plate, adapters, pigtails & splice trays delivered assembled
- Pigtails ideally routed and protected into the splice tray
- Pigtails are connected to the adapters according to the color code

ASSEMBLED FIBER PANEL	NUMBER OF PIGTAILS	TYPE OF ADAPTERS	PERFORMANCE	SCREW MOUNTED
TO 1U	XX P	XXXXXXXX	XXX	X
	6	STS* STAS	OM3	- (screwless)
	12	STD* STAD	OM4	1 (with 48MMTVIS screws)
	24	SCS SCAS	OM5	
	36	SCD SCAD	OS2	
	48	SCSISS SCASISS	7A2 (G657 A2)	
	72	LCD LCAD		
	96	LCQ LCAQ		

*Always with screws

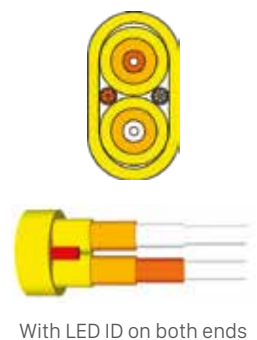
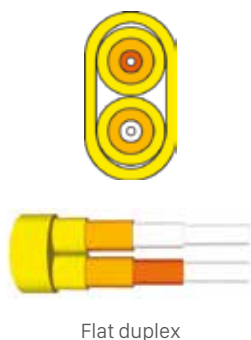
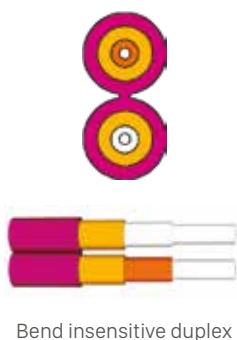
DUPLEX OPTICAL PATCHCORDS LSZH



DESCRIPTION	OM3	OM4	OM5	OS2
SC/SC duplex patchcords LSZH	JSCSCxDMUL500M3	JSCSCxDMUL500M4	On demand	JSCSCxDMONO
LC/SC duplex patchcords LSZH	JLCSxDMUL500M3	JLCSxDOM4	On demand	JLCSxDMONO
LC/LC duplex patchcords LSZH	JLCLxDMUL500M3	JLCLxDOM4	On demand	JLCLxDMONO

*replace x by the length

OTHER TYPES OF PATCHCORDS ARE AVAILABLE ON REQUEST



FIBER SYSTEM

Fiber optic preterminated link

MMC proposes a range of factory preterminated optical links covered by the 25 years system warranty.

CLASSICAL RANGE FOR LAN BUILDING NETWORKS



EP aa l yyy yyy xxx xxx zzz

ITEMS	DESCRIPTION
Replace aa by the number of fiber strings	4/6/8/12/24 brins
Replace yyy by the length in meters	From 1 to 400 meters
Replace xxx by the connectors right/left	SC, LC, with UPC or APC 8° - ST and FC on demand
Replace zzz by the type of fiber	OM3, OM4, OS2

COMPACT RANGE FOR DATA CENTER NETWORKS



ITEMS	DESCRIPTION
P aa M yyy xxx xxx zzz	Preterminated fiber link micro-break out loose tube indoor LSZH

MTP® RANGE FOR SAN HIGH DENSITY NETWORKS



ITEMS	DESCRIPTION
MTP TRUNK xx zzz yyy	MTP® female /MTP® female preterminated fiber link micro-break out single sheath indoor LSZH < 10 m
MTP RUG xx zzz yyy	MTP® female /MTP® female preterminated fiber link micro- break out double sheath indoor LSZH > 10 m
MTP C xx zzz yyy	MTP® female /MTP® female preterminated fiber link micro- break out double sheath corrugated steel indoor LSZH > 10 m
MTP FAN xx zzz yyy aaa	MTP® male / 12*LC or SC preterminated fiber link micro-break out single sheath indoor LSZH < 10 m
MTP FAN C xx zzz yyy	MTP® male / 12*LC or SC preterminated fiber link micro- break out double sheath corrugated steel indoor LSZH > 10 m



RACKS SYSTEM

19" CABINET RANGE

ESSENTIAL RANGE	19
TECHNIC 1000 RANGE	20
TECHNIC 1000 PERFORATED DOOR RANGE	21

19" ACCESSORIES

FAN UNIT	22
PLINTH	22
19" GROUNDING KIT	22
SHELVES	23
19" PANEL	23
19" POWER UNIT DISTRIBUTION	23

19" WALL MOUNTED CABINET

19" WALL MOUNTED CABINET DEPTH 400MM	24
19" WALL MOUNTED CABINET 3 PARTS DEPTH 500MM	24
19" WALL MOUNTED CABINET DEPTH 600MM	24
19" WALL MOUNTED FRAME	24

10" RANGE

10" WALL MOUNTED CABINET	25
10" MODULAR PANEL	25
10" ACCESSORIES	25

RACKS SYSTEM

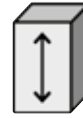
19" racks

CABINET RANGE

ESSENTIAL



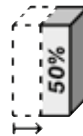
500Kg



27U/42U



600x600 / 600x800
800x600 / 800x800



Flatpack

ITEMS	NUMBER OF U	WIDTH	DEPTH	DESCRIPTION
ES2766	27 U	600	600	19" Essential cabinet 27U 600 x 600
ES4266	42 U	600	600	19" Essential cabinet 42U 600 x 600
ES4268	42 U	600	800	19" Essential cabinet 42U 600 x 800
ES4286	42 U	800	600	19" Essential cabinet 42U 800 x 600
ES4288	42 U	800	800	19" Essential cabinet 42U 800 x 800

FLATPACKING

ITEMS	NUMBER OF U	WIDTH	DEPTH	DESCRIPTION
ES2766X	27 U	600	600	19" Essential cabinet flatpack 27U 600 x 600
ES4266X	42 U	600	600	19" Essential cabinet flatpack 42U 600 x 600
ES4268X	42 U	600	800	19" Essential cabinet flatpack 42U 600 x 800
ES4286X	42 U	800	600	19" Essential cabinet flatpack 42U 800 x 600
ES4288X	42 U	800	800	19" Essential cabinet flatpack 42U 800 x 800

ACCESSORIES

ITEMS	DESCRIPTION
ACJMAR27	19" rear mounting 27U for Essential cabinet
ACJMAR642	19" rear mounting 42U for Essential cabinet depth 600
ACJMAR842	19" rear mounting 42U for Essential cabinet depth 800
ACRINGS6	Pack of 6 rings for vertical cabling management Essential cabinet depth 800

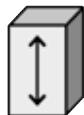
RACKS SYSTEM

19" racks

TECHNIC 1000



Tested up
to 1250Kg



27U/33U
42U/47U
(+12U)



600x600 / 600x800
800x600 / 800x800



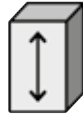
ITEMS	NUMBER OF U	WIDTH	DEPTH	DESCRIPTION
TM2766	27 U	600	600	19" Technic 1000 cabinet 27U 600 x 600
TM3366	33 U	600	600	19" Technic 1000 cabinet 33U 600 x 600
TM3388	33 U	800	800	19" Technic 1000 cabinet 33U 800 x 800
TM4266	42 U	600	600	19" Technic 1000 cabinet 42U 600 x 600
TM4268	42 U	600	800	19" Technic 1000 cabinet 42U 600 x 800
TM4286	42 U	800	600	19" Technic 1000 cabinet 42U 800 x 600
TM4288	42 U	800	800	19" Technic 1000 cabinet 42U 800 x 800
TM4288SP0	42 U	800	800	19" Technic 1000 extension cabinet" 42U 800 x 800
TM4288FOR0SP0	42 U	800	800	19" Technic 1000 skeleton cabinet 19" 42U 800 x 800
TM42810	42 U	800	1000	19" Technic 1000 cabinet 42U 800 x 1000

TECHNIC

perforated doors 1000



Tested up to 1250Kg



42U/47U (+12U)



600x1000 / 800x1000
800x600



ITEMS	NUMBER OF U	WIDTH	DEPTH	DESCRIPTION
TM42610F2PR2P	42 U	600	1000	19" Technic 1000 cabinet 42U 600 x 1000 with front/rear perforated doors
TM4288F2PR2P	42 U	800	800	19" Technic 1000 cabinet 42U 800 x 800 with front/rear perforated doors
TM42810F2PR2P	42 U	800	1000	19" Technic 1000 cabinet 42U 800 x 1000 with front/rear perforated doors
TM42812F2PR2P	42 U	800	1200	19" Technic 1000 cabinet 42U 800 x 1200 with front/rear perforated doors
TM47810F2PR2P	47 U	800	1000	19" Technic 1000 cabinet 47U 800 x 1000 with front/rear perforated doors
TM47812F2PR2P	47 U	800	1200	19" Technic 1000 cabinet 47U 800 x 1200 with front/rear perforated doors

RACKS SYSTEM

19" accessories

FAN UNIT



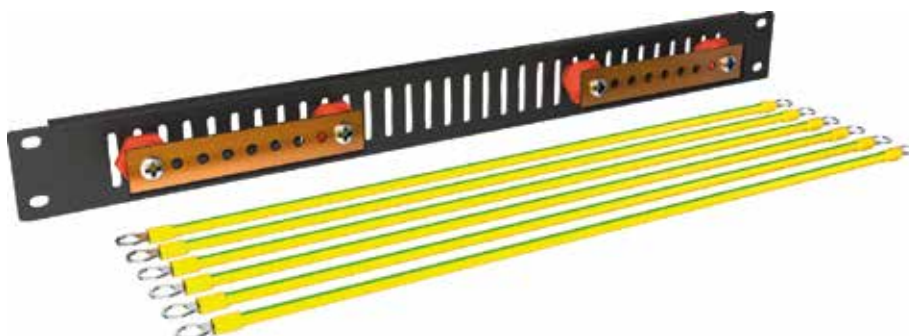
ITEMS	DESCRIPTION
ACB2V	Block 2 fans unit for 19" Multimedia Connect cabinet
ACB4V	Block 4 fans unit for 19" Multimedia Connect cabinet
ACTHERMOST	Thermostat for ACB2V ou ACB4V

PLINTH



ITEMS	DESCRIPTION
AC66PLINTH100	Plinth height 100mm for cabinet 600 x 600
AC86PLINTH100	Plinth height 100mm for cabinet 800 x 600 ou 600 x 800
AC88PLINTH100	Plinth height 100mm for cabinet 800 x 800
AC810PLINTH100	Plinth height 100 mm for cabinet 800 x 1000

19" GROUNDING KIT



ITEM	DESCRIPTION
BMASSE19	19" grounding system

SHELVES



ITEMS	DESCRIPTION
49PM1U250G	19" modem plate depth 250 mm 1U
BPF1U450AD	19" adjustable fixed plate depth 450 mm 1U
BPG1Uxxx	19" sliding plate depth 350 or 550 mm 1U
BSERVPF720G	19" fixed plate depth 720 mm 1U
BSERVPG720G	19" sliding plate depth 720 mm 1U

19" PANEL MANAGEMENT



ITEMS	DESCRIPTION
MMCPF1U4CROG	19" panel equipped with 4 management rings 1U
MMCPF81UG	19" panel equipped with brush 1U
MMCOBxUG	19" blank panel - 1U ou 2U ou 3U ou 5U

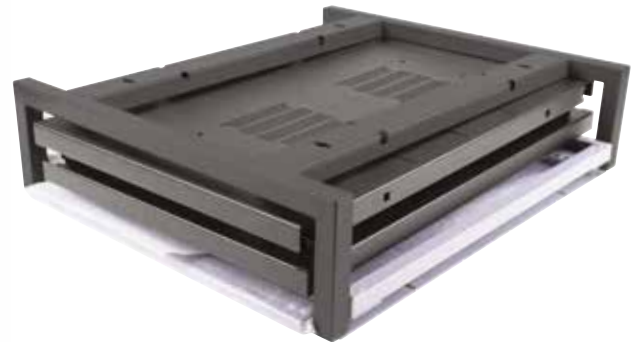
19" POWER UNIT DISTRIBUTION



ITEMS	DESCRIPTION
49BP6I	19" power distribution unit 6 sockets plastic case equipped with switch
49BP7	19" power distribution unit 7 sockets plastic case
49BM6DDP	19" power distribution unit 6 sockets aluminium case equipped with protected differential switch
49BM8PM	19" power distribution unit 8 sockets aluminium case
49BM8IPPM	19" power distribution unit 8 sockets aluminium case equipped with protected switch
49BM8IPMSH	19" power distribution unit 8 schuko 20 sockets aluminium with switch

RACKS SYSTEM

19" wall mounted cabinet



19" WALL MOUNTED CABINET DEPTH 400 MM

ITEMS	DESCRIPTION
WMC07P400	19" wall mounted cabinet 7U 400mm depth
WMC10P400	19" wall mounted cabinet 10U 400mm depth
WMC13P400	19" wall mounted cabinet 13U 400mm depth
WMC16P400	19" wall mounted cabinet 16U 400 mm depth

19" WALL UNMOUNTED CABINET DEPTH 400 MM

ITEMS	DESCRIPTION
WUC07P400	19" wall unmounted cabinet 7U 400mm depth
WUC10P400	19" wall unmounted cabinet 10U 400mm depth
WUC13P400	19" wall unmounted cabinet 13U 400mm depth
WUC16P400	19" wall unmounted cabinet 16U 400 mm depth

19" WALL MOUNTED CABINET DEPTH 600 MM

ITEMS	DESCRIPTION
WMC10P600	19" wall mounted cabinet 10U 600mm depth
WMC16P600	19" wall mounted cabinet 16U 600mm depth
WMC22P600	19" wall mounted cabinet 22U 600mm depth

19" WALL UNMOUNTED CABINET DEPTH 600 MM

ITEMS	DESCRIPTION
WUC10P600	19" wall unmounted cabinet 10U 600mm depth
WUC16P600	19" wall unmounted cabinet 16U 600mm depth
WUC22P600	19" wall unmounted cabinet 22U 600mm depth

10" range



10" WALL MOUNTED CABINET

ITEMS	DESCRIPTION
DC10COF6U	10" wall mounted cabinet 6U

10" MODULAR PANEL

ITEMS	DESCRIPTION
DC10T1U8SC	10" optical module 8 SC duplex 10" 1U
DC10T1U12LC	10" optical module 12 LC duplex 1U

10" ACCESSORIES

ITEMS	DESCRIPTION
DC10PAN1UK	10" patch panel 12 RJ45 1U
DC10PAN2UK	10" patch panel 24 RJ45 2U
DC10GC1U	10" management patch panel 1U
DC10OB1U	10" blank panel 1U
DC10OB2U	10" blank panel 2U
DC10OB3U	10" blank panel 3U
DC104PC	10" power unit distribution 4 sockets 1U
DC10PM1U	10" modem plate 1U

25 YEARS SYSTEM WARRANTY

High quality, guaranteed !

Multimedia Connect 25 years system warranty reflects the importance we give to the quality, committing ourselves directly towards the end user of our products.

Multimedia Connect 25 years system warranty is offered by Multimedia Connect Certified Installers, which we have been selected and trained. This warranty is the consequence of stringent quality procedures which are applied from the design to the production and logistic levels of our organisation.



CERTIFIED BY RENOWNED INDEPENDENT LABORATORIES

Since its creation, Multimedia Connect has worked closely with Delta Electronics, an independent Laboratory, based in Denmark.

Delta is, without doubt, an international reference for third party certification in our industry. Our products, systems and manufacturing processes have been tested and certified by Delta since 1999.

We also work with **ETL** and **3P**.

In total, Multimedia Connect holds one of the largest range of third party certificates covering components, permanent links and channels.





www.multimedia-connect.fr



3 avenue Jeanne Garnerin,
Batiment le Cormoran
91320 Wissous, France
Tel. +33 (0) 1 69 79 39 80
Email : contact@multimedia-connect.fr