

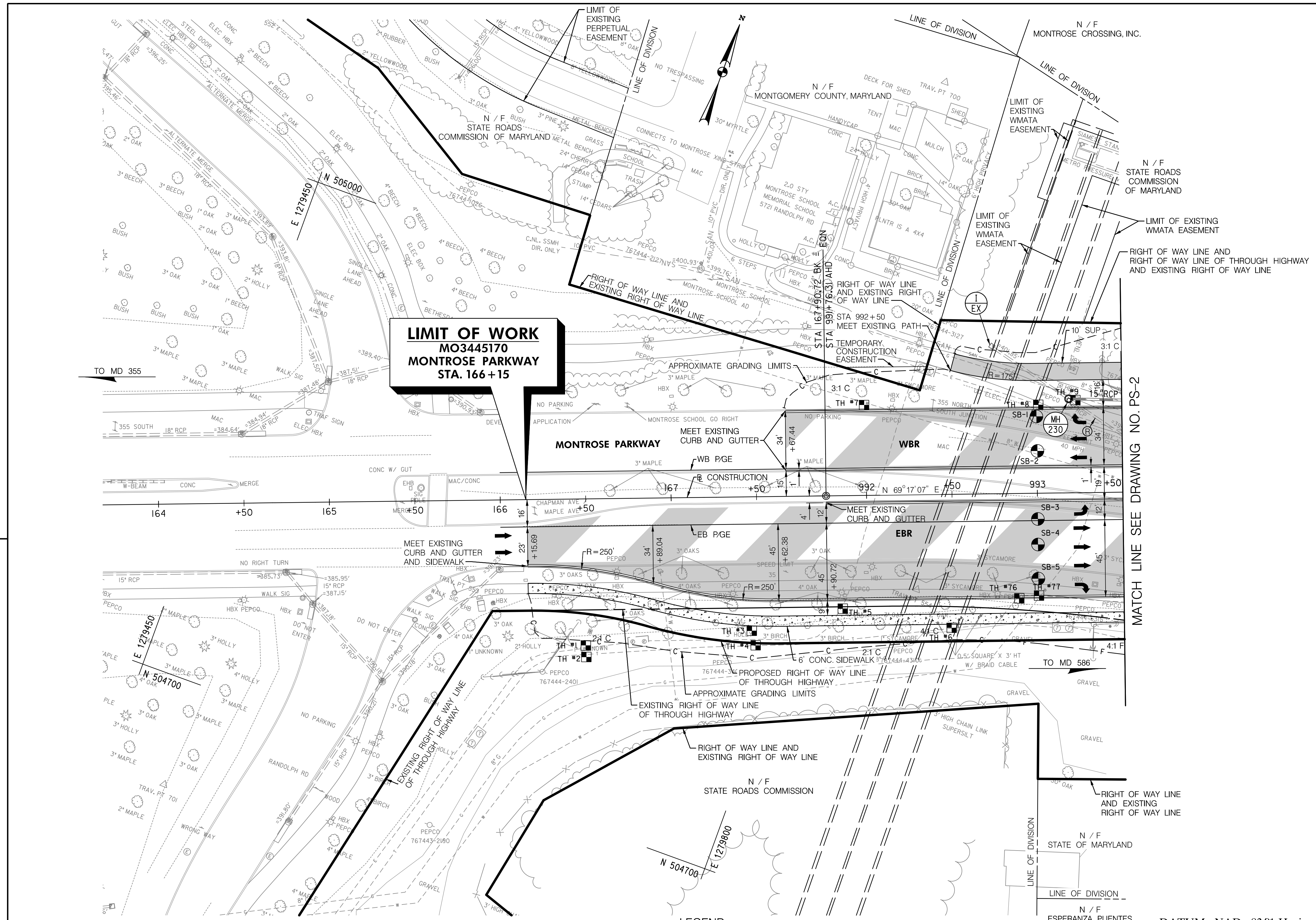
TYPE 'A' COMBINATION CURB AND GUTTER (MD 620.02), 12" PAN, 10" DEPTH		
LOCATION - STATION	LF	
LT. STA. 167+67.44 TO STA. 993+50	197	
LT. STA. 167+67.44 TO STA. 993+50 (MEDIAN)	197	
RT. STA. 991+76.31 TO STA. 993+50 (MEDIAN)	174	
RT. STA. 166+15.69 TO STA. 993+50	351	

5" CONCRETE SIDEWALK		
LOCATION - STATION	SF	
RT. STA. 166+15.69 TO STA. 993+50	2105	

REMOVAL OF EXISTING PIPES		
LOCATION - STATION	LF	
15" RCP LT. STA. 993+21 TO STA. 993+50	39	

TYPE 'A' SOIL STABILIZATION MATTING (MD 389.06 & MD 389.07)		
LOCATION - STATION	SY	
RT. STA. 166+15 TO STA. 992+50	555	

6" PERFORATED CIRCULAR PIPE LONGITUDINAL UNDERDRAIN (MD 387.01)		
LOCATION - STATION	LF	
LT. STA. 993+15 TO STA. 993+50	35	



LIMIT OF WORK
MO3445170
MONTROSE PARKWAY
STA. 166+15

MATCH LINE SEE DRAWING NO. PS-2

LEGEND

- CONCRETE (SIDEWALK, MONOLITHIC MEDIAN, ENTRANCE APRON, CONCRETE DITCH, ETC.)
- FULL DEPTH CONSTRUCTION
- RESURFACING
- BIO-SWALE / BIO-RETENTION
- SOIL STABILIZATION MATTING FOR DITCHES AND STORMWATER MANAGEMENT DEVICES
- REMOVAL OF EXISTING PAVEMENT

DATUM: NAD 8391 Horizontal
 NAVD 88 Vertical

R / W PLAT NUMBER	CROSS REFERENCE	SHEET NOS.
	ITEM	
	TYPICAL SHEETS	4 - 17
	SUPERELEVATION SHEETS	22 - 24
	PIPE & DRAINAGE SCHEDULE	68 - 98
	GEOMETRIC LAYOUT SHEETS	19 - 21
	ROADWAY PLAN SHEETS	25 - 38
	ROADWAY PROFILE SHEETS	39 - 54
	TRAFFIC CONTROL SHEETS	121 - 141
	EROSION & SEDIMENT CONTROL	142 - 184
	SIGNING & MARKING PLANS	
	LANDSCAPE PLAN SHEETS	
	UTILITIES	

REVISIONS		
NO.	DESCRIPTION	DATE

SHA STATE OF MARYLAND
 DEPARTMENT OF TRANSPORTATION
 STATE HIGHWAY ADMINISTRATION
 HIGHWAY DESIGN DIVISION

MD 355 PHASE 2
 MONTROSE PARKWAY FROM WEST OF
 MAPLE / CHAPMAN AVENUE TO EAST OF PARKLAWN DRIVE

ROADWAY PLAN		
SCALE 1" = 30'	ADVERTISED DATE	CONTRACT NO. MO3445170
DESIGNED BY DKL	COUNTY MONTGOMERY	
DRAWN BY DAW	LOGMILE	
CHECKED BY ERF		
F.A.P. NO.		
DRAWING NO. PS-1	OF 11	SHEET NO. 25 OF

WB THE WILSON T. BALLARD CO.
 CONSULTING ENGINEERS | OWINGS MILLS, MD

LIMIT OF WORK
MO3445170
CHAPMAN AVENUE
STA. 106 + 39.51

CURVE DATA						
CURVE	DELTA	Dc	RADIUS	TANGENT	LENGTH	EXTERNAL
MA-1	17°04'28"	13°19'29"	430.00'	64.55'	128.14'	4.82'
CA-1	16°56'28"	27°17'01"	210.00'	31.27'	62.09'	2.32'
CA-2	34°15'08"	26°02'37"	220.00'	67.79'	131.52'	10.21'
CN-1	78°52'22"	59°40'59"	96.00'	78.96'	132.15'	28.30'
RR-1	108°43'53"	114°35'30"	50.00'	69.75'	94.89'	35.82'
RR-2	1°57'36"	0°50'11"	6850.00'	117.8'	234.34'	1.00'

TYPE 'A' COMBINATION CURB AND GUTTER (MD 620.02), 12" PAN, 10" DEPTH	
LOCATION - STATION	LF
LT. STA. 993+50 TO LT. STA. 104+03.39	102
RT. STA. 600+09.29 TO LT. STA. 998+50	279
RT. & LT. STA. 993+50 TO STA. 994+54 (MEDIAN)	214
RT. & LT. STA. 995+22 TO STA. 998+50 (MEDIAN)	660
RT. STA. 993+50 TO LT. STA. 102+28.01	102
LT. STA. 102+44.05 TO RT. STA. 998+50	360
LT. STA. 500+09.70 TO STA. 502+00	221
RT. STA. 499+86.73 TO STA. 502+00	214

TYPE 'D' COMBINATION CURB AND GUTTER (MD 620.02-01), 12" PAN, 10" DEPTH	
LOCATION - STATION	LF
LT. STA. 104+03.39 TO STA. 106+09.58	176
LT. & RT. STA. 104+02 TO STA. 105+07.99 (MEDIAN)	206
RT. STA. 105+25 TO LT. STA. 603+50	315
RT. STA. 600+09.29 TO STA. 601+23.37	83

TYPE 'A' CURB ANY HEIGHT (MD 620.02)	
LOCATION - STATION	LF
LT. STA. 104+05	47
RT. STA. 104+43	60
RT. STA. 500+50	20

MODIFIED MONTGOMERY CO. TYPE 'A' COMBINATION CURB AND GUTTER (MC 100.01) 16" PAN, 10" DEPTH	
LOCATION - STATION	LF
LT. STA. 101+51.34 TO STA. 102+28.01	85
RT. STA. 102+15.14 TO STA. 102+44.05	28

TYPE 'A' CURB 8"x 16" (MD 620.02)	
LOCATION - STATION	LF
LT. & RT. STA. 994+18 (MEDIAN)	41
LT. & RT. STA. 104+22 (MEDIAN)	19

5" CONCRETE SIDEWALK	
LOCATION - STATION	SF
LT. STA. 994+22 TO LT. STA. 105+94	1191
LT. STA. 600+70	135
RT. STA. 600+70 TO LT. STA. 995+96	667
LT. & RT. STA. 104+22	71
LT. & RT. STA. 994+18	108
RT. STA. 993+50 TO LT. STA. 101+51	1232
RT. STA. 102+24 TO STA. 102+58	169
RT. STA. 994+75 TO STA. 502+00	4483

SIDEWALK RAMPS		
LOCATION - STATION		
LT. STA. 994+28		PERPENDICULAR
LT. & RT. STA. 994+18 (MEDIAN)		CUT THROUGH
RT. STA. 994+04		PERPENDICULAR
LT. STA. 102+51		PERPENDICULAR
RT. STA. 102+62		PERPENDICULAR
LT. STA. 104+05		COMBINATION
LT. & RT. STA. 104+22		CUT THROUGH
RT. STA. 104+43		COMBINATION
LT. STA. 105+85		PARALLEL
LT. STA. 600+70		PERPENDICULAR
RT. STA. 600+70		PERPENDICULAR
LT. STA. 500+50		PERPENDICULAR
RT. STA. 500+50		PARALLEL

6" PERFORATED CIRCULAR PIPE LONGITUDINAL UNDERDRAIN (MD 387.11)	
LOCATION - STATION	LF
LT. STA. 993+50 TO STA. 994+15	65
RT. STA. 104+59 TO LT. STA. 998+48	302
LT. STA. 993+50 TO STA. 993+88	38
LT. STA. 995+01 TO STA. 996+35	134
LT. STA. 996+77 TO STA. 998+48	171
RT. STA. 104+59 TO RT. STA. 603+45	322
LT. STA. 500+15 TO STA. 501+52	168
LT. STA. 501+58 TO STA. 501+97	39

DETECTABLE WARNING SURFACE	
LOCATION - STATION	SF
LT. STA. 994+28	10
LT. & RT. STA. 994+18 (MEDIAN)	24
RT. STA. 994+04	10
LT. STA. 102+48	10
RT. STA. 102+62	16
LT. STA. 104+05	22
LT. & RT. STA. 104+22 (MEDIAN)	70
RT. STA. 104+43	31
LT. STA. 105+85	16
LT. STA. 600+70	10
RT. STA. 600+70	10
LT. STA. 500+50	10
RT. STA. 500+50	11

TYPE 'C' TRAFFIC BARRIER END TREATMENT (MD 605.03)	
LOCATION - STATION	EA
RT. STA. 998+00	1

REMOVE EXISTING MANHOLE	
LOCATION - STATION	EA
LT. STA. 993+55	1

REMOVE EXISTING INLET	
LOCATION - STATION	EA
LT. STA. 993+75	1
RT. STA. 993+92	1
LT. STA. 501+76	1

REMOVE EXISTING PIPES	
LOCATION - STATION	LF
15" RCP LT. STA. 993+56 TO STA. 993+74	25
15" RCP LT. STA. 993+57 TO STA. 994+17	67
15" RCP RT. STA. 993+95 TO STA. 994+31	36
15" RCP LT. STA. 501+76	8

BRICK MASONRY FOR MISCELLANEOUS STRUCTURES	
LOCATION - STATION	CY
15" RCP STA. 501+77	2

COMMERCIAL ENTRANCE	
LOCATION - STATION	SY
LT. STA. 101+92	30

FLOWABLE BACKFILL FOR PIPE ABANDONMENT	
LOCATION - STATION	CY
15" RCP STA. 501+77	2

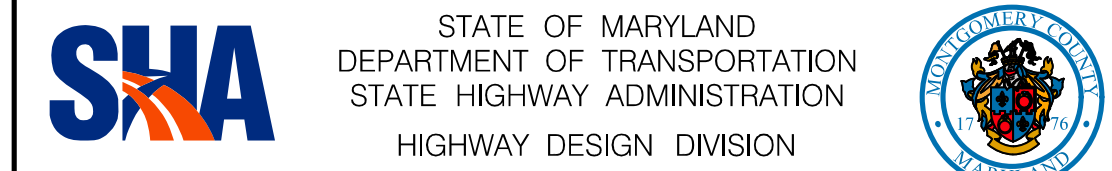
TYPE 'A' SOIL STABILIZATION MATTING (MD 389.06 & MD 389.07)	
LOCATION - STATION	SY
LT. STA. 996+06 TO STA. 998+50	233
RT. STA. 995+38 TO STA. 998+50	459
RT. STA. 601+08.5 TO STA. 603+55	184

6" PERFORATED CIRCULAR PIPE UNDERDRAIN OUTLET (MD 387.01)	
LOCATION - STATION	LF
LT. STA. 996+35	12

LEGEND

- CONCRETE (SIDEWALK, MONOLITHIC MEDIAN, ENTRANCE APRON, CONCRETE DITCH, ETC.)
- FULL DEPTH CONSTRUCTION
- RESURFACING
- BIO-SWALE / BIO-RETENTION
- SOIL STABILIZATION MATTING FOR DITCHES AND STORMWATER MANAGEMENT DEVICES
- REMOVAL OF EXISTING PAVEMENT

DATUM: NAD 8391 Horizontal
NAVD 88 Vertical



STATE OF MARYLAND
DEPARTMENT OF TRANSPORTATION
STATE HIGHWAY ADMINISTRATION
HIGHWAY DESIGN DIVISION
MD 355 PHASE 2
MONTROSE PARKWAY FROM WEST OF
MAPLE / CHAPMAN AVENUE TO EAST OF PARKLAWN DRIVE

ROADWAY PLAN

SCALE 1" = 30'	ADVERTISED DATE	CONTRACT NO.	MO3445170
DESIGNED BY	DKL	COUNTY	MONTGOMERY
DRAWN BY	DAW	LOGMILE	
CHECKED BY	ERF		
F.A.P. NO.			
DRAWING NO.	PS - 2	OF	11
SHEET NO.			27

PLOTTED: Wednesday, September 21, 2016 AT 02:04 PM
FILE: c:\sha\working\00728540\p002_M0355_P2_W16.dgn



LIMIT OF WORK
MO3445170
MAPLE AVENUE
STA. 101 + 51.34

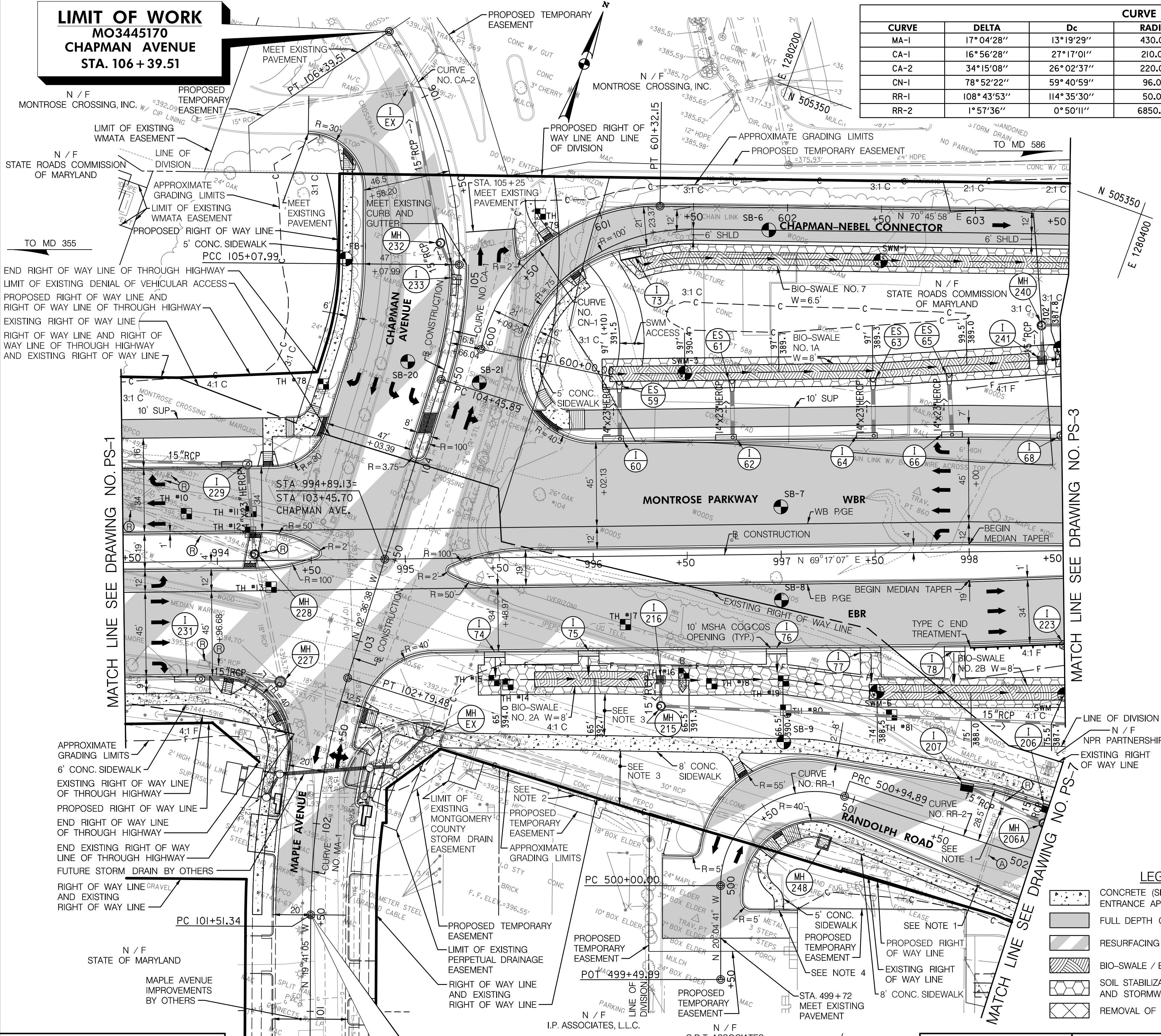
- NOTES:**
- BULKHEAD EXISTING 15" RCP USING 8" BRICK MASONRY AND FILL WITH FLOWABLE FILL.
 - FULL DEPTH SAW CUT EXISTING ENTRANCE. REMOVE EXISTING ENTRANCE AND SIDEWALK FROM SAWCUT TO INSIDE EXISTING RIGHT OF WAY.
 - REMOVE EXISTING SIDEWALK CURB AND GUTTER AND BOUND PAVEMENT LAYERS IN THIS AREA. BACKFILL AND GRADE FOR POSITIVE DRAINAGE.
 - DEPRESS CURB AT 5' SIDEWALK TO MATCH ELEVATION OF PARKING LOT.

BY: BEL -

MATCH LINE SEE DRAWING NO. PS-1

MATCH LINE SEE DRAWING NO. PS-3

MATCH LINE SEE DRAWING NO. PS-7



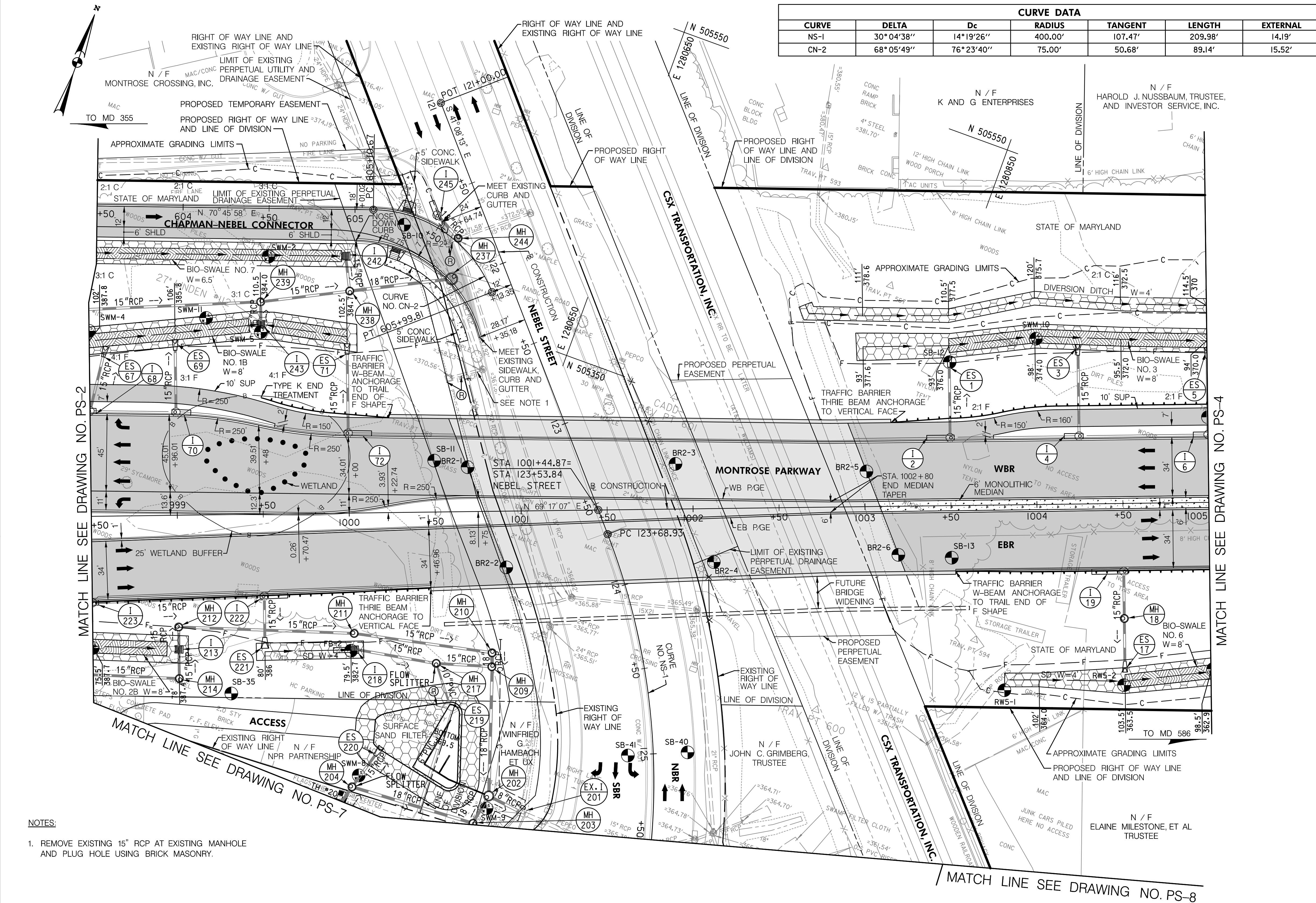
WB
CONSULTING ENGINEERS | OWINGS MILLS, MD

THE WILSON T. BALLARD CO.

LIMIT OF WORK
MO3445170
MAPLE AVENUE
STA. 101 + 51.34

- NOTES:**
- BULKHEAD EXISTING 15" RCP USING 8" BRICK MASONRY AND FILL WITH FLOWABLE FILL.
 - FULL DEPTH SAW CUT EXISTING ENTRANCE. REMOVE EXISTING ENTRANCE AND SIDEWALK FROM SAWCUT TO INSIDE EXISTING RIGHT OF WAY.
 - REMOVE EXISTING SIDEWALK CURB AND GUTTER AND BOUND PAVEMENT LAYERS IN THIS AREA. BACKFILL AND GRADE FOR POSITIVE DRAINAGE.
 - DEPRESS CURB AT 5' SIDEWALK TO MATCH ELEVATION OF PARKING LOT.

CURVE DATA						
CURVE	DELTA	Dc	RADIUS	TANGENT	LENGTH	EXTERNAL
NS-1	30°04'38"	14°19'26"	400.00'	107.47'	209.98'	14.19'
CN-2	68°05'49"	76°23'40"	75.00'	50.68'	89.14'	15.52'



MATCH LINE SEE DRAWING NO. PS-2

MATCH LINE SEE DRAWING NO. PS-4

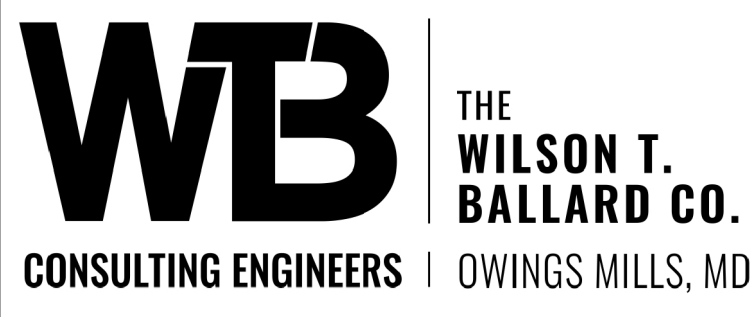
MATCH LINE SEE DRAWING NO. PS-8

- NOTES:**
- REMOVE EXISTING 15" RCP AT EXISTING MANHOLE AND PLUG HOLE USING BRICK MASONRY.

LEGEND

- CONCRETE (SIDEWALK, MONOLITHIC MEDIAN, ENTRANCE APRON, CONCRETE DITCH, ETC.)
- FULL DEPTH CONSTRUCTION
- RESURFACING
- BIO-SWALE / BIO-RETENTION
- SOIL STABILIZATION MATTING FOR DITCHES AND STORMWATER MANAGEMENT DEVICES
- REMOVAL OF EXISTING PAVEMENT

DATUM: NAD 8391 Horizontal
NAVD 88 Vertical



SHA STATE OF MARYLAND
DEPARTMENT OF TRANSPORTATION
STATE HIGHWAY ADMINISTRATION
HIGHWAY DESIGN DIVISION

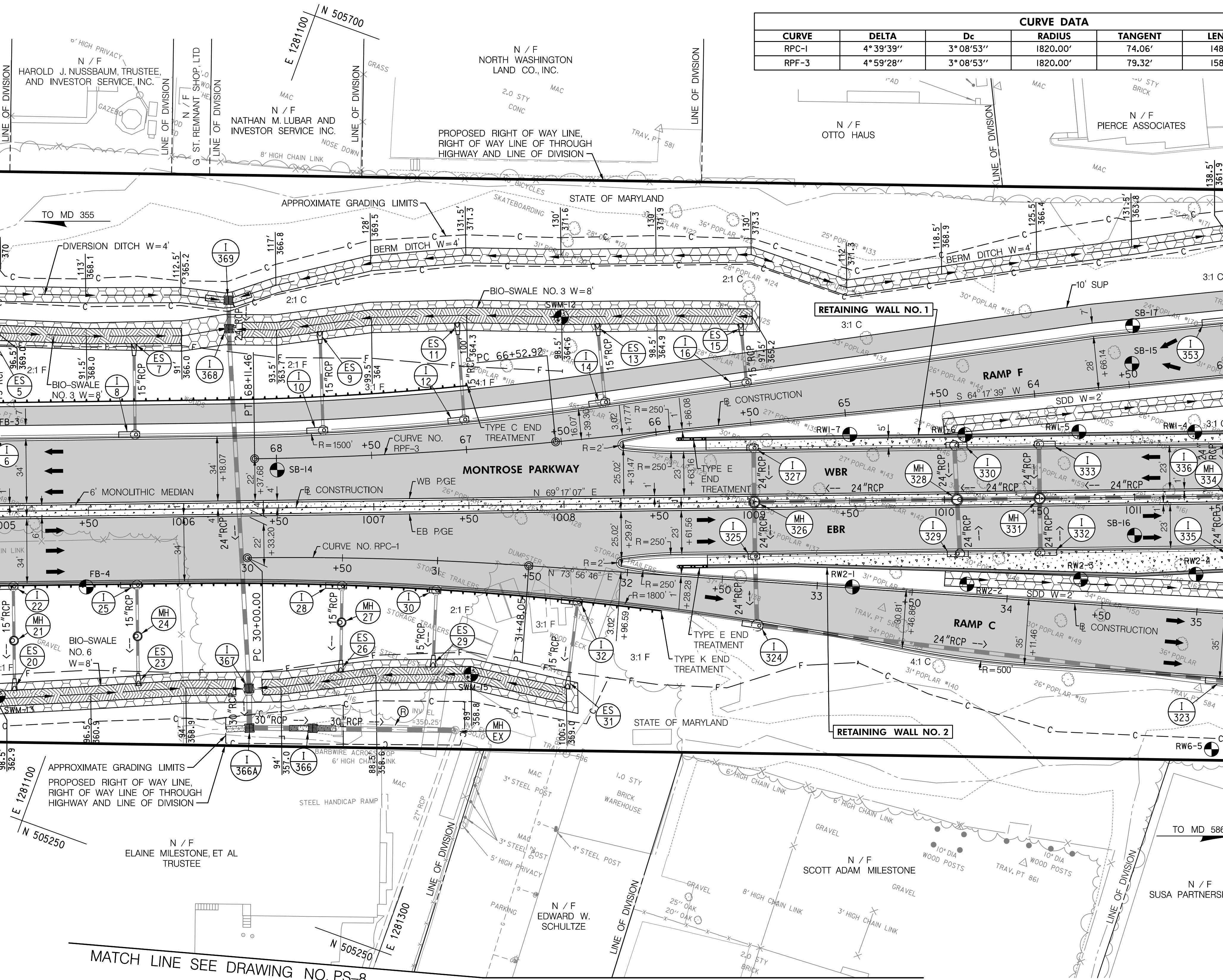
MD 355 PHASE 2
MONTROSE PARKWAY FROM WEST OF
MAPLE / CHAPMAN AVENUE TO EAST OF PARKLAWN DRIVE

ROADWAY PLAN

SCALE 1" = 30'	ADVERTISED DATE _____	CONTRACT NO. _____	MO3445170
DESIGNED BY DKL	COUNTY MONTGOMERY		
DRAWN BY DAW	LOGMILE _____		
CHECKED BY ERF			
F.A.P. NO. _____			
DRAWING NO. PS-3	OF 11	SHEET NO. 28	OF _____

R / W PLAT NUMBER	CROSS REFERENCE	REVISIONS
	ITEM	SHEET NOs.
	TYPICAL SHEETS	4 - 17
	SUPERELEVATION SHEETS	22 - 24
	PIPE & DRAINAGE SCHEDULE	68 - 98
	GEOMETRIC LAYOUT SHEETS	19 - 21
	ROADWAY PLAN SHEETS	25 - 38
	ROADWAY PROFILE SHEETS	39 - 54
	TRAFFIC CONTROL SHEETS	121 - 141
	EROSION & SEDIMENT CONTROL	142 - 184
	SIGNING & MARKING PLANS	
	LANDSCAPE PLAN SHEETS	
	UTILITIES	

N / F
HAROLD J. NUSSBAUM,
TRUSTEE,
AND INVESTOR
SERVICE, INC.



CURVE DATA						
CURVE	DELTA	Dc	RADIUS	TANGENT	LENGTH	EXTERNAL
RPC-1	4° 39' 39"	3° 08' 53"	1820.00'	74.06'	148.05'	1.51'
RPF-3	4° 59' 28"	3° 08' 53"	1820.00'	79.32'	158.54'	1.73'

QUANTITY NOTES

TYPE 'A' COMBINATION CURB AND GUTTER (MD 620.02), 12" PAN, 10" DEPTH	
LOCATION - STATION	LF
LT. STA. 1005+00 TO RT. STA. 62+95	577
LT. STA. 62+98 TO STA. 1011+50	612
RT. STA. 1005+00 TO STA. 35+21	572
LT. STA. 35+18 TO RT. STA. 1011+50	615
6' TYPE 'A-1' MONOLITHIC CONCRETE MEDIAN (MD 645.01), 12" PAN, 10" DEPTH	
LOCATION - STATION	LF
STA. 1005+00 TO STA. 1011+50 (MEDIAN)	650
5" CONCRETE SIDEWALK	
LOCATION - STATION	SF
LT. STA. 1008+75 TO STA. 1011+50	1403
RT. STA. 1008+75 TO STA. 1011+50	2381
5" CONCRETE DITCH	
LOCATION - STATION	SY
I-369	7
I-366	7
I-366A	4
TYPE 'A' SOIL STABILIZATION MATTING (MD 389.06 & MD 389.07)	
LOCATION - STATION	SY
LT. STA. 1005+00 TO STA. 1011+50	575
LT. STA. 1010+00 TO STA. 1011+50	134
RT. STA. 1010+00 TO STA. 1011+50	134
2H SLOPE LT. STA. 1005+00 TO STA. 1006+93	670
2H SLOPE RT. STA. 1005+00 TO STA. 1008+10	1355
LT. STA. 1005+00 TO STA. 1009+04	375
RT. STA. 1005+00 TO STA. 1008+06	292
TYPE 'E' TRAFFIC BARRIER END TREATMENT - 3 BAYS (MD 605.06)	
LOCATION - STATION	EA
LT. STA. 1008+75	1
RT. STA. 1008+75	1
TYPE 'C' TRAFFIC BARRIER END TREATMENT (MD 605.03)	
LOCATION - STATION	EA
LT. STA. 1007+00 TO STA. 1007+50	1
TYPE 'K' TRAFFIC BARRIER END TREATMENT (MD 605.10)	
LOCATION - STATION	EA
RT. STA. 1008+50	1
TRAFFIC BARRIER W-BEAM - 8 FOOT POST LENGTH (MD 605.25)	
LOCATION - STATION	LF
LT. STA. 1005+00 TO STA. 1007+00	200
RT. STA. 1005+00 TO STA. 1008+50	350
6" PERFORATED CIRCULAR PIPE LONGITUDINAL UNDERDRAIN (MD 387.11)	
LOCATION - STATION	LF
LT. STA. 1005+04 TO STA. 1005+73	69
LT. STA. 1005+79 TO RT. STA. 67+77	92
RT. STA. 62+92 TO STA. 65+46	253
RT. STA. 65+52 TO STA. 66+21	69
RT. STA. 66+27 TO STA. 66+96	69
RT. STA. 67+02 TO STA. 67+71	69
LT. STA. 1008+31 TO STA. 1008+98	67
LT. STA. 1009+04 TO STA. 1010+03	99
LT. STA. 1010+08 TO STA. 1010+46	38
LT. STA. 1010+52 TO STA. 1011+46	94
RT. STA. 1005+00 TO STA. 1005+08	8
RT. STA. 1005+12 TO STA. 1005+73	61
RT. STA. 1005+77 TO RT. STA. 30+48	104
RT. STA. 30+52 TO STA. 30+98	46
RT. STA. 31+02 TO STA. 31+73	71
RT. STA. 31+77 TO STA. 32+67	90
RT. STA. 33+25 TO STA. 35+18	193
RT. STA. 1008+30 TO STA. 1008+98	68
RT. STA. 1009+04 TO STA. 1010+05	101
RT. STA. 1010+52 TO STA. 1011+46	94
RT. STA. 1010+10 TO STA. 1010+46	36

MATCH LINE SEE DRAWING NO. PS-3

MATCH LINE SEE DRAWING NO. PS-5

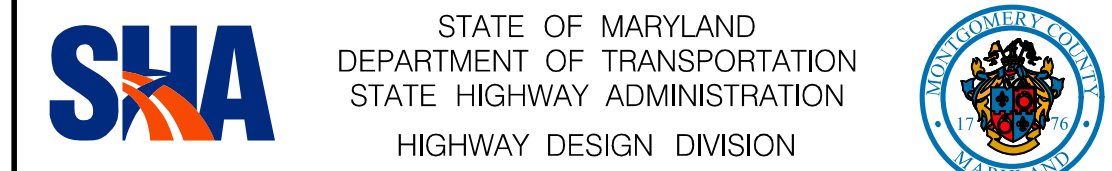
MATCH LINE SEE DRAWING NO. PS-8

MATCH LINE SEE DRAWING NO. PS-8

LEGEND

- CONCRETE (SIDEWALK, MONOLITHIC MEDIAN, ENTRANCE APRON, CONCRETE DITCH, ETC.)
- FULL DEPTH CONSTRUCTION
- RESURFACING
- BIO-SWALE / BIO-RETENTION
- SOIL STABILIZATION MATTING FOR DITCHES AND STORMWATER MANAGEMENT DEVICES
- REMOVAL OF EXISTING PAVEMENT

DATUM: NAD 8391 Horizontal
NAVD 88 Vertical



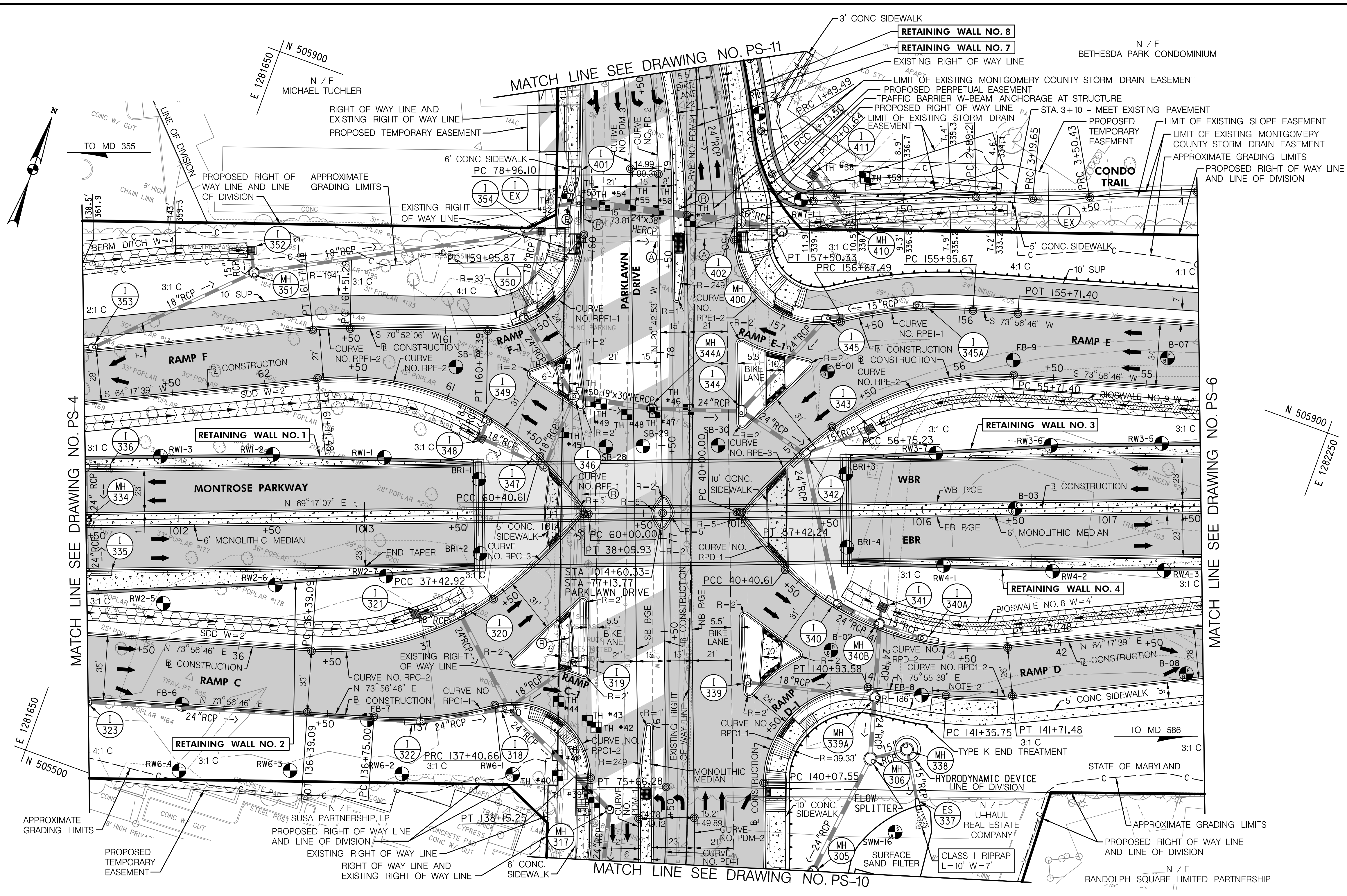
MD 355 PHASE 2
MONTROSE PARKWAY FROM WEST OF
MAPLE / CHAPMAN AVENUE TO EAST OF PARKLAWN DRIVE

ROADWAY PLAN

SCALE 1" = 30'	ADVERTISED DATE	CONTRACT NO.	MO3445170
DESIGNED BY	DKL	COUNTY	MONTGOMERY
DRAWN BY	DAW	LOGMILE	
CHECKED BY	ERF		
F.A.P. NO.			
DRAWING NO.	PS-4	OF	11
SHEET NO.			30



R / W PLAT NUMBER	CROSS REFERENCE	REVISIONS
	ITEM	SHEET NOS.
	TYPICAL SHEETS	4 - 17
	SUPERELEVATION SHEETS	22 - 24
	PIPE & DRAINAGE SCHEDULE	68 - 98
	GEOMETRIC LAYOUT SHEETS	19 - 21
	ROADWAY PLAN SHEETS	25 - 38
	ROADWAY PROFILE SHEETS	39 - 54
	TRAFFIC CONTROL SHEETS	121 - 141
	EROSION & SEDIMENT CONTROL	142 - 184
	SIGNING & MARKING PLANS	
	LANDSCAPE PLAN SHEETS	
	UTILITIES	



MATCH LINE SEE DRAWING NO. PS-4

MATCH LINE SEE DRAWING NO. PS-6

MATCH LINE SEE DRAWING NO. PS-11

MATCH LINE SEE DRAWING NO. PS-10

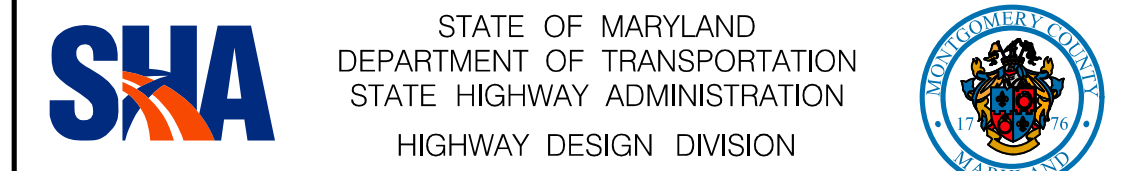
NOTES:

- BULKHEAD ENDS OF EXISTING 36" RCP USING 8" BRICK MASONRY AND FILL WITH FLOWABLE FILL.
- 35' PARKING PAD FOR MAINTENANCE OF STORMWATER MANAGEMENT STRUCTURE, FOR CONSTRUCTION DETAILS SEE COMMERCIAL ENTRANCE ON SHEET TD-1.

LEGEND

- CONCRETE (SIDEWALK, MONOLITHIC MEDIAN, ENTRANCE APRON, CONCRETE DITCH, ETC.)
- FULL DEPTH CONSTRUCTION
- RESURFACING
- BIO-SWALE / BIO-RETENTION
- SOIL STABILIZATION MATTING FOR DITCHES AND STORMWATER MANAGEMENT DEVICES
- REMOVAL OF EXISTING PAVEMENT

DATUM: NAD 8391 Horizontal
NAVD 88 Vertical



STATE OF MARYLAND
DEPARTMENT OF TRANSPORTATION
STATE HIGHWAY ADMINISTRATION
HIGHWAY DESIGN DIVISION

MD 355 PHASE 2
MONTROSE PARKWAY FROM WEST OF
MAPLE / CHAPMAN AVENUE TO EAST OF PARKLAWN DRIVE

ROADWAY PLAN

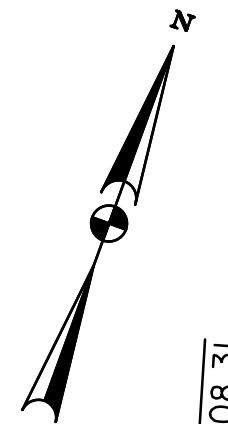
SCALE 1" = 30'	ADVERTISED DATE _____	CONTRACT NO. _____	MO3445170
DESIGNED BY DKL	COUNTY MONTGOMERY		
DRAWN BY DAW	LOGMILE _____		
CHECKED BY ERF			
F.A.P. NO. _____			
DRAWING NO. PS-5	OF 11	SHEET NO. 31	OF

R / W PLAT NUMBER	CROSS REFERENCE	REVISIONS
	ITEM	SHEET NOs.
	TYPICAL SHEETS	4 - 17
	SUPERELEVATION SHEETS	22 - 24
	PIPE & DRAINAGE SCHEDULE	68 - 98
	GEOMETRIC LAYOUT SHEETS	19 - 21
	ROADWAY PLAN SHEETS	25 - 38
	ROADWAY PROFILE SHEETS	39 - 54
	TRAFFIC CONTROL SHEETS	121 - 141
	EROSION & SEDIMENT CONTROL	142 - 184
	SIGNING & MARKING PLANS	
	LANDSCAPE PLAN SHEETS	
	UTILITIES	

PLOTTED: Wednesday, September 21, 2016 AT 02:29 PM
FILE: c:\sha\working\00728540\p-d-P005_MD355_P2_WTB.dgn



BY: BEL -



CURVE DATA						
CURVE	DELTA	Dc	RADIUS	TANGENT	LENGTH	EXTERNAL
RPD-3	4°59'28"	3°08'53"	1820.00'	79.32'	158.54'	1.73'
RPE-1	4°39'39"	3°08'53"	1820.00'	74.07'	148.05'	1.51'

TYPE 'A' COMBINATION CURB AND GUTTER (MD 620.02), 12" PAN, 10" DEPTH		
LOCATION - STATION	LF	
LT. & RT. STA. 1020+00 TO STA. 1022+00 (MEDIAN)	400	
LT. STA. 1017+50 TO LT. STA. 54+71J5	605	
RT. STA. 50+20 TO RT. STA. 54+74	419	
RT. STA. 1017+50 TO LT. STA. 42+77	604	
RT. STA. 42+74.50 TO STA. 47+28	408	

6' TYPE 'A-I' MONOLITHIC CONCRETE MEDIAN (MD 645.01), 12" PAN, 10" DEPTH		
LOCATION - STATION	LF	
LT. & RT. STA. 1017+50 TO STA. 1020+00 (MEDIAN)	250	

5" CONCRETE SIDEWALK		
LOCATION - STATION	SF	
LT. STA. 1017+50 TO STA. 1020+00	1274	
RT. STA. 1017+50 TO STA. 1020+00	1274	
RT. STA. 42+73.71 TO STA. 47+28	2263	

5" CONCRETE DITCH		
LOCATION - STATION	SY	
I-508	4	
I-512	4	
I-501	7	

TYPE 'A' SOIL STABILIZATION MATTING (MD 389.06 & MD 389.07)		
LOCATION - STATION	SY	
LT. STA. 53+52 TO STA. 54+70	94	
2H SLOPE LT. STA. 1018+50 TO STA. 1020+50	894	
LT. STA. 42+78 TO STA. 44+26	119	
2H SLOPE RT. STA. 1021+08 TO STA. 1022+00	130	
2H SLOPE RT. STA. 1021+50 TO STA. 1022+00	156	
RT. STA. 1018+48 TO STA. 1022+00	303	

TYPE 'B' SOIL STABILIZATION MATTING (MD 389.06 & MD 389.07)		
LOCATION - STATION	SY	
RT. STA. 1021+00 TO STA. 1022+00	116	

TYPE 'C' TRAFFIC BARRIER END TREATMENT (MD 605.03)		
LOCATION - STATION	EA	
LT. STA. 1022+00 TO STA. 1022+50	1	
RT. STA. 45+00 TO STA. 45+50	1	

TYPE 'E' TRAFFIC BARRIER END TREATMENT (MD 605.06)		
LOCATION - STATION	EA	
LT. STA. 1020+00	1	
RT. STA. 1020+00	1	

TYPE 'K' TRAFFIC BARRIER END TREATMENT (MD 605.10)		
LOCATION - STATION	EA	
RT. STA. 1023+00	1	

TRAFFIC BARRIER W-BEAM - 8 FOOT POST LENGTH (MD 605.25)		
LOCATION - STATION	LF	
RT. STA. 50+20 TO STA. 54+75	455	
LT. STA. 45+50 TO STA. 1023+00	275	

6" PERFORATED CIRCULAR PIPE LONGITUDINAL UNDERDRAIN (MD 387.11)		
LOCATION - STATION	LF	
LT. STA. 1017+50 TO STA. 1017+88	38	
LT. STA. 1017+94 TO STA. 1020+33	239	
RT. STA. 1017+50 TO STA. 1017+88	38	
RT. STA. 1017+94 TO STA. 1020+33	239	
RT. STA. 50+31 TO STA. 50+67	36	
RT. STA. 51+03 TO STA. 51+86	83	
RT. STA. 51+91 TO STA. 53+40	149	
RT. STA. 53+47 TO STA. 54+74	127	
RT. STA. 43+22 TO STA. 44+33	111	
RT. STA. 44+54 TO STA. 45+59	105	
RT. STA. 45+65 TO STA. 47+00	134	

6" CIRCULAR PIPE UNDERDRAIN OUTLET (MD 387.01)		
LOCATION - STATION	LF	
RT. STA. 47+00 TO STA. 46+79	56	
RT. STA. 50+31 TO STA. 50+42	39	

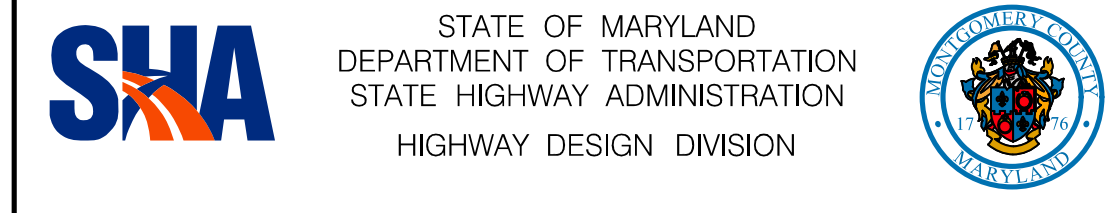
LIMIT OF WORK
MO3445170
MONTROSE PARKWAY
STA. 1022+00

LEGEND

- CONCRETE (SIDEWALK, MONOLITHIC MEDIAN, ENTRANCE APRON, CONCRETE DITCH, ETC.)
- FULL DEPTH CONSTRUCTION
- RESURFACING
- BIO-SWALE / BIO-RETENTION
- SOIL STABILIZATION MATTING FOR DITCHES AND STORMWATER MANAGEMENT DEVICES
- REMOVAL OF EXISTING PAVEMENT

R / W PLAT NUMBER	CROSS REFERENCE	SHEET NOS.
	ITEM	
	TYPICAL SHEETS	4 - 17
	SUPERELEVATION SHEETS	22 - 24
	PIPE & DRAINAGE SCHEDULE	66 - 98
	GEOMETRIC LAYOUT SHEETS	19 - 21
	ROADWAY PLAN SHEETS	25 - 38
	ROADWAY PROFILE SHEETS	39 - 54
	TRAFFIC CONTROL SHEETS	121 - 141
	EROSION & SEDIMENT CONTROL	142 - 184
	SIGNING & MARKING PLANS	
	LANDSCAPE PLAN SHEETS	
	UTILITIES	

REVISIONS		
NO.	DESCRIPTION	DATE



STATE OF MARYLAND
 DEPARTMENT OF TRANSPORTATION
 STATE HIGHWAY ADMINISTRATION
 HIGHWAY DESIGN DIVISION

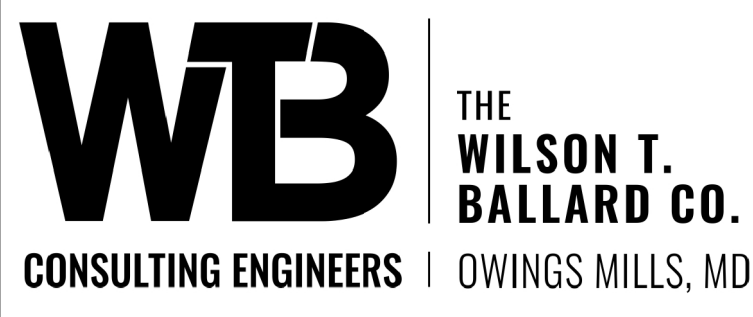
ROADWAY PLAN

MD 355 PHASE 2
 MONTROSE PARKWAY FROM WEST OF MAPLE / CHAPMAN AVENUE TO EAST OF PARKLAWN DRIVE

SCALE 1" = 30' ADVERTISED DATE _____ CONTRACT NO. MO3445170

DESIGNED BY DKL COUNTY MONTGOMERY
 DRAWN BY DAW LOGMILE _____
 CHECKED BY ERF
 F.A.P. NO. _____

DRAWING NO. **PS-6** OF **11** SHEET NO. **33** OF _____





LIMIT OF WORK
MO3445170
RANDOLPH ROAD
STA. 506 + 25

6" PERFORATED CIRCULAR PIPE LONGITUDINAL UNDERDRAIN (MD 387.11)	
LOCATION - STATION	LF
RT. STA. 128+06 TO STA. 128+97	91
LT. STA. 502+03 TO STA. 503+47	144

TYPE 'A' CURB ANY HEIGHT (MD 620.02)	
LOCATION - STATION	LF
RT. STA. 502+56	20
RT. STA. 503+06	21

TYPE 'A' COMBINATION CURB AND GUTTER (MD 620.02), 12" PAN, 10" DEPTH	
LOCATION - STATION	LF
LT. STA. 502+00 TO STA. 504+18.23	206
LT. & RT. STA. 503+11 TO STA. 505+04 (MEDIAN)	376
RT. STA. 502+00 TO STA. 502+56	105
RT. STA. 503+16 TO LT. STA. 126+75.69	290

MONTGOMERY CO. TYPE 'A' COMBINATION CURB AND GUTTER, (MC 100.01)	
LOCATION - STATION	LF
LT. STA. 126+75.69 TO STA. 129+18.87	233
RT. STA. 128+60	37
RT. STA. 128+85	38

TYPE 'A' CURB 8"x 16" (MD 620.02)	
LOCATION - STATION	LF
LT. & RT. STA. 504+85 (MEDIAN)	21

5" CONCRETE SIDEWALK	
LOCATION - STATION	SF
LT. STA. 502+00 TO STA. 504+18.23	1738
RT. STA. 502+00 TO STA. 502+60	773
RT. STA. 503+03 TO STA. 129+18.87	3824
LT. & RT. STA. 504+85 (MEDIAN)	39

SIDEWALK RAMPS	
LOCATION - STATION	CUT THROUGH
LT. & RT. STA. 504+85 (MEDIAN)	PARALLEL
RT. STA. 502+56	PARALLEL
RT. STA. 503+06	PERPENDICULAR
RT. STA. 504+85	PERPENDICULAR
RT. STA. 126+78	PERPENDICULAR

DETECTABLE WARNING SURFACE	
LOCATION - STATION	SF
LT. & RT. STA. 504+85 (MEDIAN)	20
RT. STA. 502+56	13
RT. STA. 503+06	12
RT. STA. 504+85	10
RT. STA. 126+78	10

TYPE 'A' SOIL STABILIZATION MATTING (MD 389.06 & MD 389.07)	
LOCATION - STATION	SY
2:1 SLOPE RT. STA. 126+74 TO STA. 128+59	578
RT. STA. 126+97 TO STA. 128+38	179

TYPE 'B' TRAFFIC BARRIER END TREATMENT (MD 605.02)	
LOCATION - STATION	EA
RT. STA. 126+80.5 TO STA. 127+18	1
RT. STA. 128+16 TO STA. 128+53.5	1

TRAFFIC BARRIER W-BEAM - 8 FOOT POST LENGTH (MD 605.25)	
LOCATION - STATION	LF
RT. STA. 127+18 TO STA. 128+16	117

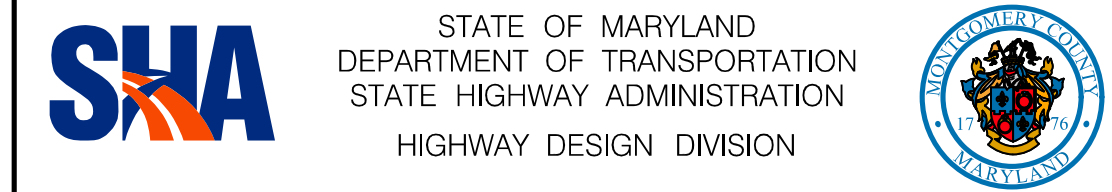
REMOVE EXISTING INLET	
LOCATION - STATION	EA
RT. STA. 127+50	1

REMOVE EXISTING PIPES	
LOCATION - STATION	LF
12" CMP RT. STA. 128+02.17	11
12" RCP RT. STA. 127+62.68	2

BRICK MASONRY FOR MISCELLANEOUS STRUCTURES	
LOCATION - STATION	CY
15" RCP RT. STA. 127+47	1
15" RCP RT. STA. 506+18	1

COMMERCIAL ENTRANCE	
LOCATION - STATION	SY
RT. STA. 128+72	62

FLOWABLE BACKFILL FOR PIPE ABANDONMENT	
LOCATION - STATION	CY
15" RCP RT. STA. 127+47 TO RT. STA. 506+18	6



STATE OF MARYLAND
 DEPARTMENT OF TRANSPORTATION
 STATE HIGHWAY ADMINISTRATION
 HIGHWAY DESIGN DIVISION
 MD 355 PHASE 2
 MONTROSE PARKWAY FROM WEST OF
 MAPLE / CHAPMAN AVENUE TO EAST OF PARKLAWN DRIVE

ROADWAY PLAN

SCALE 1" = 30'	ADVERTISED DATE	CONTRACT NO.	MO3445170
DESIGNED BY	DKL	COUNTY	MONTGOMERY
DRAWN BY	DAW	LOGMILE	
CHECKED BY	ERF		
F.A.P. NO.			
DRAWING NO.	PS-7	OF	11
		SHEET NO.	34 OF

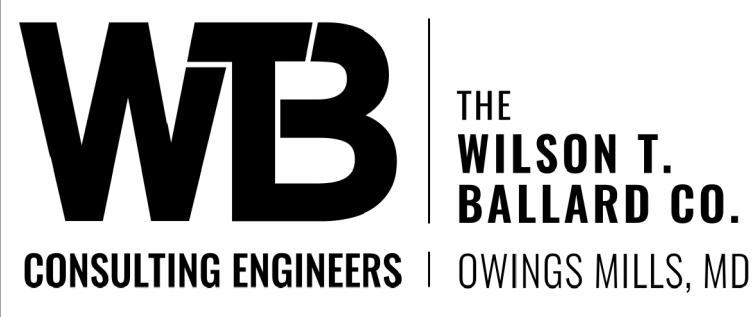
CURVE DATA						
CURVE	DELTA	Dc	RADIUS	TANGENT	LENGTH	EXTERNAL
NS-1	30° 04' 38"	14° 19' 26"	400.00'	107.47'	209.98'	14.19'
NS-2	13° 24' 30"	15° 03' 56"	380.31'	44.70'	89.00'	2.62'
NS-3	6° 39' 30"	3° 29' 44"	1639.14'	95.35'	190.49'	2.77'
RR-2	1° 57' 36"	0° 50' 11"	6850.00'	117.18'	234.34'	1.00'
MS-1	17° 27' 03"	57° 17' 45"	100.00'	15.35'	30.46'	1.17'

- NOTES:**
- BULKHEAD EXISTING 15" RCP USING 8" BRICK MASONRY AND FILL WITH FLOWABLE FILL.
 - REMOVE 11 LF EXISTING 12" CMP AND INSTALL NEW 12" METAL END SECTION.
 - REMOVE 2 LF EXISTING 12" RCP AND INSTALL NEW 12" CONCRETE END SECTION.

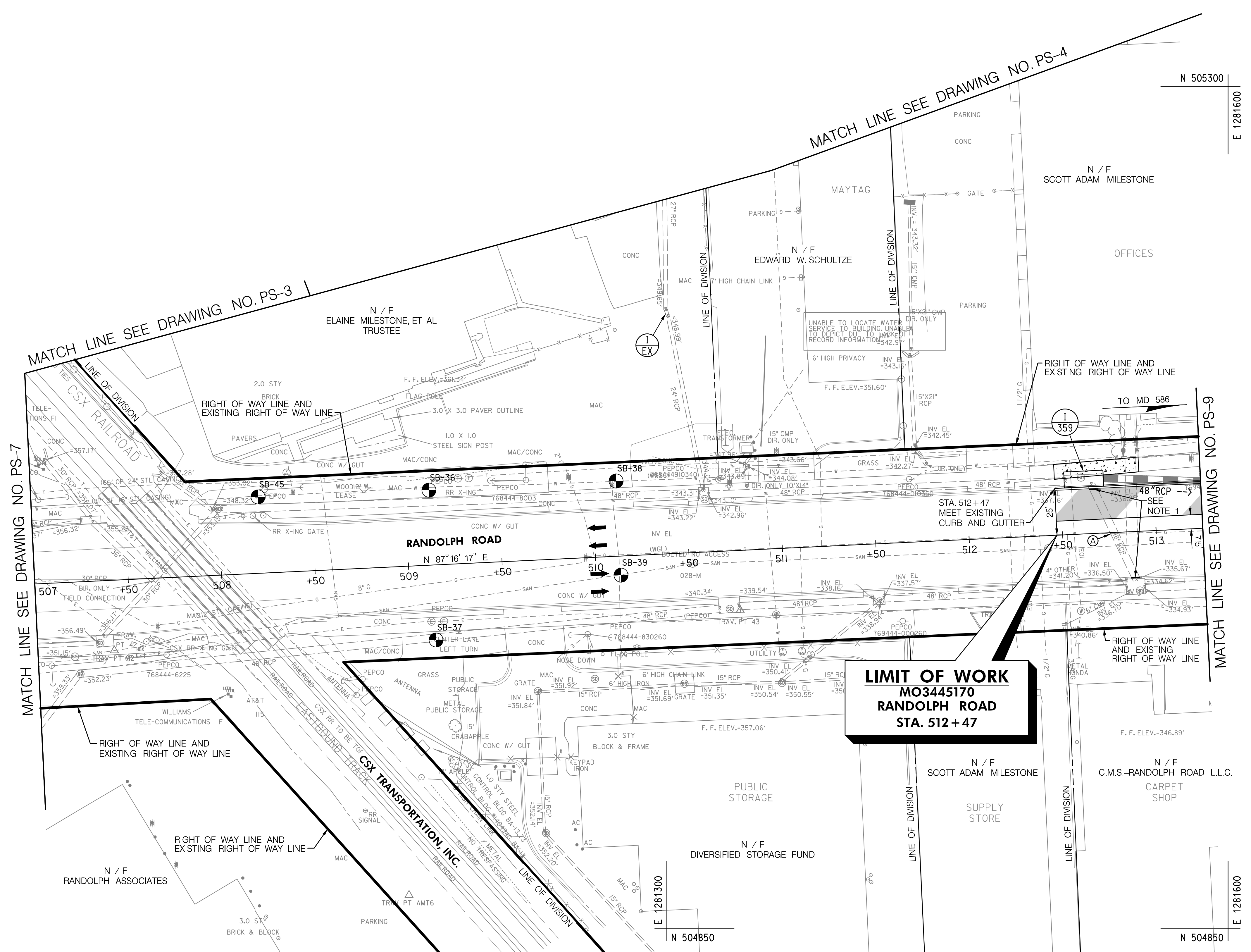
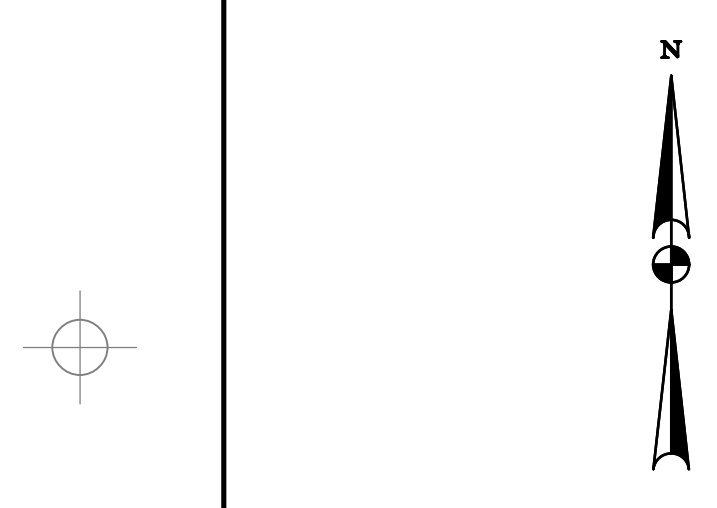
- LEGEND**
- CONCRETE (SIDEWALK, MONOLITHIC MEDIAN, ENTRANCE APRON, CONCRETE DITCH, ETC.)
 - FULL DEPTH CONSTRUCTION
 - RESURFACING
 - BIO-SWALE / BIO-RETENTION
 - SOIL STABILIZATION MATTING FOR DITCHES AND STORMWATER MANAGEMENT DEVICES
 - REMOVAL OF EXISTING PAVEMENT

R / W PLAT NUMBER	CROSS REFERENCE	SHEET NOS.
	ITEM	
	TYPICAL SHEETS	4 - 17
	SUPERELEVATION SHEETS	22 - 24
	PIPE & DRAINAGE SCHEDULE	66 - 98
	GEOMETRIC LAYOUT SHEETS	19 - 21
	ROADWAY PLAN SHEETS	25 - 38
	ROADWAY PROFILE SHEETS	39 - 54
	TRAFFIC CONTROL SHEETS	121 - 141
	EROSION & SEDIMENT CONTROL	142 - 184
	SIGNING & MARKING PLANS	
	LANDSCAPE PLAN SHEETS	
	UTILITIES	

DATUM: NAD 8391 Horizontal
 NAVD 88 Vertical



BY: daw



QUANTITY NOTES

TYPE 'A' COMBINATION CURB AND GUTTER (MD 620.02), 12" PAN, 10" DEPTH	
LOCATION - STATION	LF
LT. STA. 512+47 TO STA. 513+25	57

5" CONCRETE SIDEWALK	
LOCATION - STATION	SF
LT. STA. 512+47 TO STA. 512+92	360

BRICK MASONRY FOR MISCELLANEOUS STRUCTURES	
LOCATION - STATION	CY
LT. STA. 512+67	1
RT. STA. 512+88	1

FLOWABLE BACKFILL FOR PIPE ABANDONMENT	
LOCATION - STATION	CY
48" RCP LT. STA. 512+67 TO RT. STA. 512+88	25

LIMIT OF WORK
MO3445170
RANDOLPH ROAD
STA. 512+47

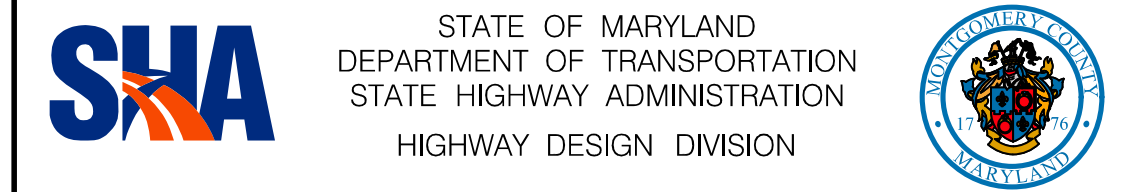
LEGEND

- CONCRETE (SIDEWALK, MONOLITHIC MEDIAN, ENTRANCE APRON, CONCRETE DITCH, ETC.)
- FULL DEPTH CONSTRUCTION
- RESURFACING
- BIO-SWALE / BIO-RETENTION
- SOIL STABILIZATION MATTING FOR DITCHES AND STORMWATER MANAGEMENT DEVICES
- REMOVAL OF EXISTING PAVEMENT

NOTES:

1. BULKHEAD EXISTING 48" RCP USING 8" BRICK MASONRY AND FILL WITH FLOWABLE FILL.

DATUM: NAD 8391 Horizontal
 NAVD 88 Vertical



STATE OF MARYLAND
 DEPARTMENT OF TRANSPORTATION
 STATE HIGHWAY ADMINISTRATION
 HIGHWAY DESIGN DIVISION

ROADWAY PLAN

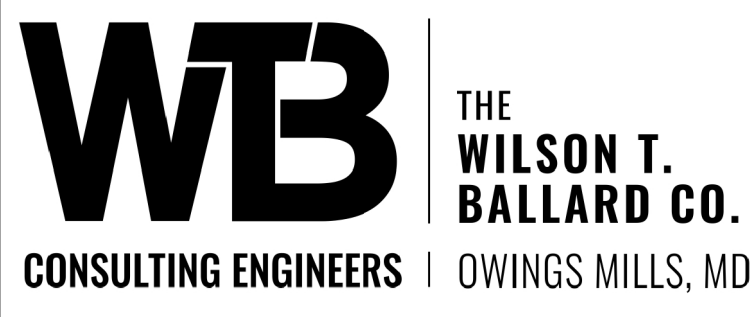
MD 355 PHASE 2
 MONTROSE PARKWAY FROM WEST OF MAPLE / CHAPMAN AVENUE TO EAST OF PARKLAWN DRIVE

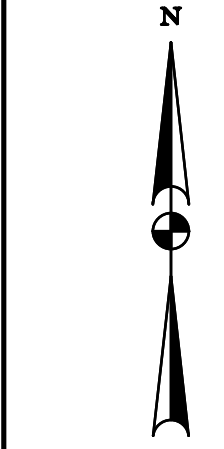
SCALE 1" = 30' ADVERTISED DATE _____ CONTRACT NO. MO3445170

DESIGNED BY DKL COUNTY MONTGOMERY
 DRAWN BY DAW LOGMILE _____
 CHECKED BY ERF
 F.A.P. NO. _____

DRAWING NO. **PS-8** OF **11** SHEET NO. **35** OF _____

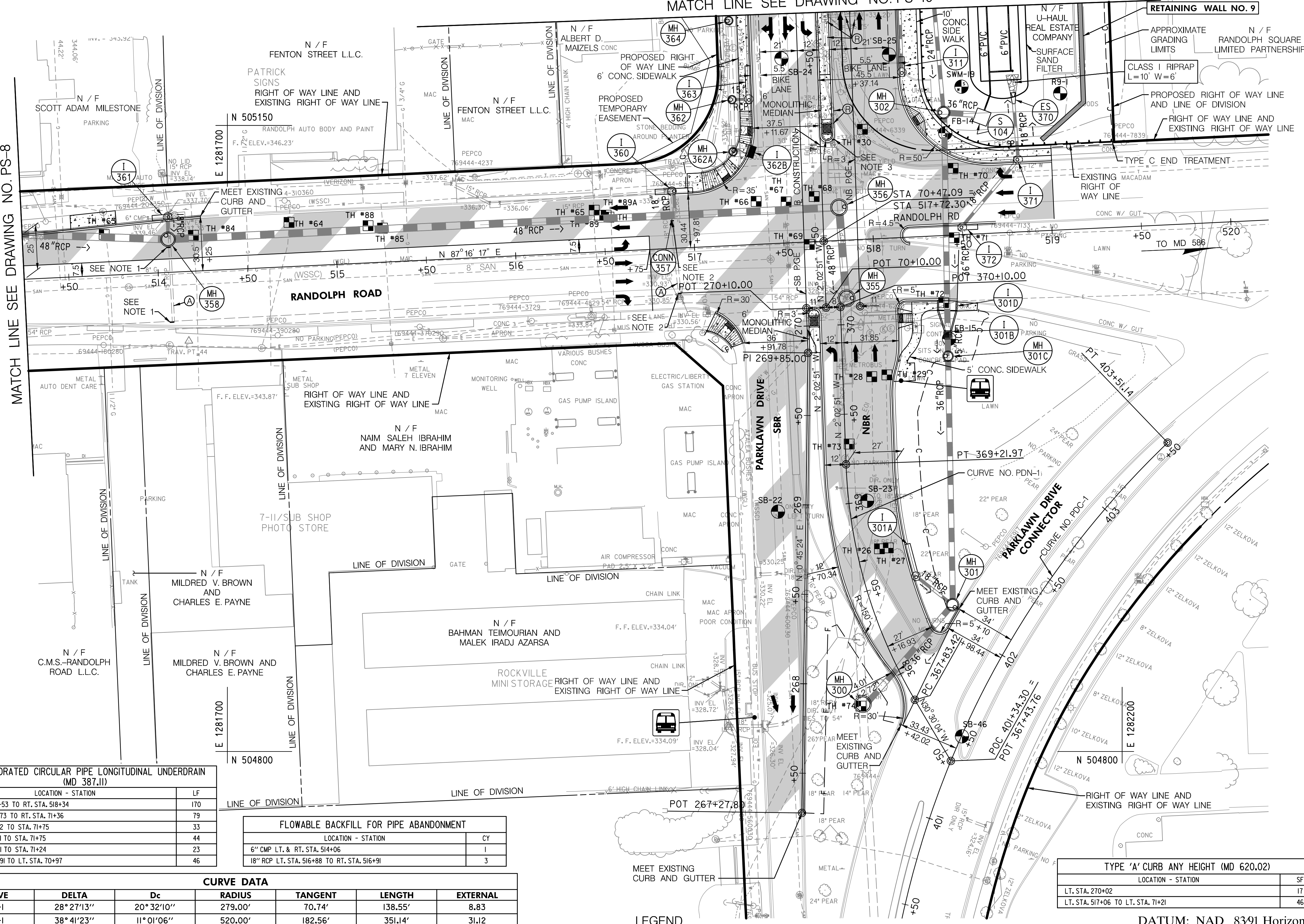
R / W PLAT NUMBER	CROSS REFERENCE	REVISIONS
	ITEM	SHEET NOs.
	TYPICAL SHEETS	4 - 17
	SUPERELEVATION SHEETS	22 - 24
	PIPE & DRAINAGE SCHEDULE	86 - 98
	GEOMETRIC LAYOUT SHEETS	19 - 21
	ROADWAY PLAN SHEETS	25 - 38
	ROADWAY PROFILE SHEETS	39 - 54
	TRAFFIC CONTROL SHEETS	121 - 141
	EROSION & SEDIMENT CONTROL	142 - 184
	SIGNING & MARKING PLANS	
	LANDSCAPE PLAN SHEETS	
	UTILITIES	





MATCH LINE SEE DRAWING NO. PS-10

MATCH LINE SEE DRAWING NO. PS-8



TYPE 'A' COMBINATION CURB AND GUTTER (MD 620.02), 12" PAN, 8" DEPTH		
LOCATION - STATION	LF	
LT. STA. 516+97.81 TO LT. STA. 71+75	105	
LT. STA. 518+80.58 TO RT. STA. 71+75	129	
RT. STA. 518+20.28 TO LT. STA. 518+68.76	14	
LT. STA. 269+91.78 TO STA. 270+09.35	24	
RT. STA. 267+27.80 TO STA. 269+85	257	
LT. STA. 367+15.31 TO STA. 369+85	218	
RT. STA. 368+20.88 TO RT. STA. 518+34.27	190	
LT. STA. 513+25 TO STA. 514+25	89	

6' TYPE 'A-I' MONOLITHIC CONCRETE MEDIAN (MD 645.01), 12" PAN, 8" DEPTH		
LOCATION - STATION	LF	
RT. STA. 269+85 TO STA. 270+09	24	

6' TYPE 'B-I' MONOLITHIC CONCRETE MEDIAN (MD 645.02), 12" PAN, 8" DEPTH		
LOCATION - STATION	LF	
RT. STA. 71+03 TO STA. 71+75	72	

5" CONCRETE SIDEWALK		
LOCATION - STATION	LF	
LT. STA. 516+97.81 TO LT. STA. 71+75	784	
LT. STA. 519+01.59 TO RT. STA. 71+75	1203	
LT. STA. 269+91.78 TO STA. 270+09.35	166	
RT. STA. 369+65 TO STA. 370+02.5	458	

SIDEWALK RAMPS		
LOCATION - STATION	LF	
LT. STA. 517+13		PARALLEL
LT. STA. 71+10		PARALLEL
RT. STA. 71+10 MEDIAN		CUT THROUGH
RT. STA. 71+12		PERPENDICULAR
LT. STA. 270+02		PARALLEL
RT. STA. 270+02 MEDIAN		CUT THROUGH
RT. STA. 370+02		PERPENDICULAR

DETECTABLE WARNING SURFACE		
LOCATION - STATION	SF	
LT. STA. 517+13	10	
LT. STA. 71+10	10	
RT. STA. 71+10 MEDIAN	24	
RT. STA. 71+12	10	
LT. STA. 270+02	10	
RT. STA. 270+02 MEDIAN	24	
RT. STA. 370+02	10	

TYPE 'C' TRAFFIC BARRIER END TREATMENT (MD 605.03)		
LOCATION - STATION	EA	
RT. STA. 70+97	1	

TRAFFIC BARRIER W-BEAM - 8 FOOT POST LENGTH (MD 605.25)		
LOCATION - STATION	LF	
RT. STA. 70+97 TO STA. 71+75	115	

REMOVE EXISTING INLET		
LOCATION - STATION	EA	
RT. STA. 71+73	1	
RT. STA. 71+73	1	
RT. STA. 71+21	1	

REMOVE EXISTING PIPES		
LOCATION - STATION	LF	
15" RCP RT. STA. 71+73	15	
15" RCP RT. STA. 71+23 TO STA. 71+70	47	
15" RCP RT. STA. 71+03 TO STA. 71+17	14	

BRICK MASONRY FOR MISCELLANEOUS STRUCTURES		
LOCATION - STATION	CY	
6" CMP LT. STA. 514+06	1	
6" CMP RT. STA. 514+06	1	
18" RCP LT. STA. 516+88	1	
18" RCP RT. STA. 516+91	1	
15" RCP RT. STA. 71+03	1	

COMMERCIAL ENTRANCE		
LOCATION - STATION	SY	
LT. STA. 513+65	21	

6" PERFORATED CIRCULAR PIPE LONGITUDINAL UNDERDRAIN (MD 387.11)		
LOCATION - STATION	LF	
RT. STA. 368+53 TO RT. STA. 518+34	170	
LT. STA. 518+73 TO RT. STA. 71+36	79	
RT. STA. 71+42 TO STA. 71+75	33	
LT. STA. 71+31 TO STA. 71+75	44	
LT. STA. 71+01 TO STA. 71+24	23	
LT. STA. 516+91 TO LT. STA. 70+97	46	

FLOWABLE BACKFILL FOR PIPE ABANDONMENT		
LOCATION - STATION	CY	
6" CMP LT. & RT. STA. 514+06	1	
18" RCP LT. STA. 516+88 TO RT. STA. 516+91	3	

CURVE DATA						
CURVE	DELTA	Dc	RADIUS	TANGENT	LENGTH	EXTERNAL
PDN-1	28° 27' 13"	20° 32' 10"	279.00'	70.74'	138.55'	8.83
PDC-1	38° 41' 23"	11° 01' 06"	520.00'	182.56'	351.14'	31.12

- LEGEND**
- CONCRETE (SIDEWALK, MONOLITHIC MEDIAN, ENTRANCE APRON, CONCRETE DITCH, ETC.)
 - FULL DEPTH CONSTRUCTION
 - RESURFACING
 - BIO-SWALE / BIO-RETENTION
 - SOIL STABILIZATION MATTING FOR DITCHES AND STORMWATER MANAGEMENT DEVICES
 - REMOVAL OF EXISTING PAVEMENT

- NOTES:**
- BULKHEAD EXISTING 6" CMP USING 8" BRICK MASONRY AND FILL WITH FLOWABLE FILL.
 - BULKHEAD EXISTING 18" RCP USING 8" BRICK MASONRY AND FILL WITH FLOWABLE FILL.
 - BULKHEAD EXISTING 15" RCP USING 8" BRICK MASONRY.

TYPE 'A' CURB ANY HEIGHT (MD 620.02)		
LOCATION - STATION	SF	
LT. STA. 270+02	17	
LT. STA. 517+06 TO LT. STA. 71+21	46	

DATUM: NAD 8391 Horizontal
NAVD 88 Vertical

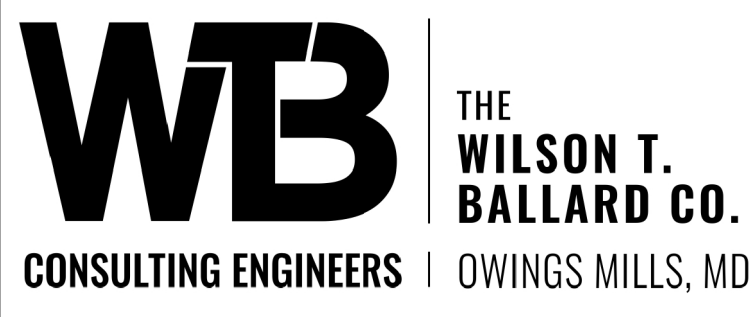
SHA STATE OF MARYLAND
DEPARTMENT OF TRANSPORTATION
STATE HIGHWAY ADMINISTRATION
HIGHWAY DESIGN DIVISION

MD 355 PHASE 2
MONTROSE PARKWAY FROM WEST OF
MAPLE / CHAPMAN AVENUE TO EAST OF PARKLAWN DRIVE

ROADWAY PLAN			
SCALE 1" = 30'	ADVERTISED DATE	CONTRACT NO.	MO3445170
DESIGNED BY	DKL	COUNTY	MONTGOMERY
DRAWN BY	DAW	LOGMILE	
CHECKED BY	ERF		
F.A.P. NO.			
DRAWING NO.	PS - 9	OF	11
SHEET NO.	36 OF		

R / W PLAT NUMBER	CROSS REFERENCE	REVISIONS
	ITEM	SHEET NOs.
	TYPICAL SHEETS	4 - 17
	SUPERELEVATION SHEETS	22 - 24
	PIPE & DRAINAGE SCHEDULE	66 - 98
	GEOMETRIC LAYOUT SHEETS	19 - 21
	ROADWAY PLAN SHEETS	25 - 38
	ROADWAY PROFILE SHEETS	39 - 54
	TRAFFIC CONTROL SHEETS	121 - 141
	EROSION & SEDIMENT CONTROL	142 - 184
	SIGNING & MARKING PLANS	
	LANDSCAPE PLAN SHEETS	
	UTILITIES	

PLOTTED: Thursday, October 27, 2016 AT 02:36 PM
FILE: c:\pwworking\wb-owatt\07285401\p009_P009_MD355_P2_WTB.dgn

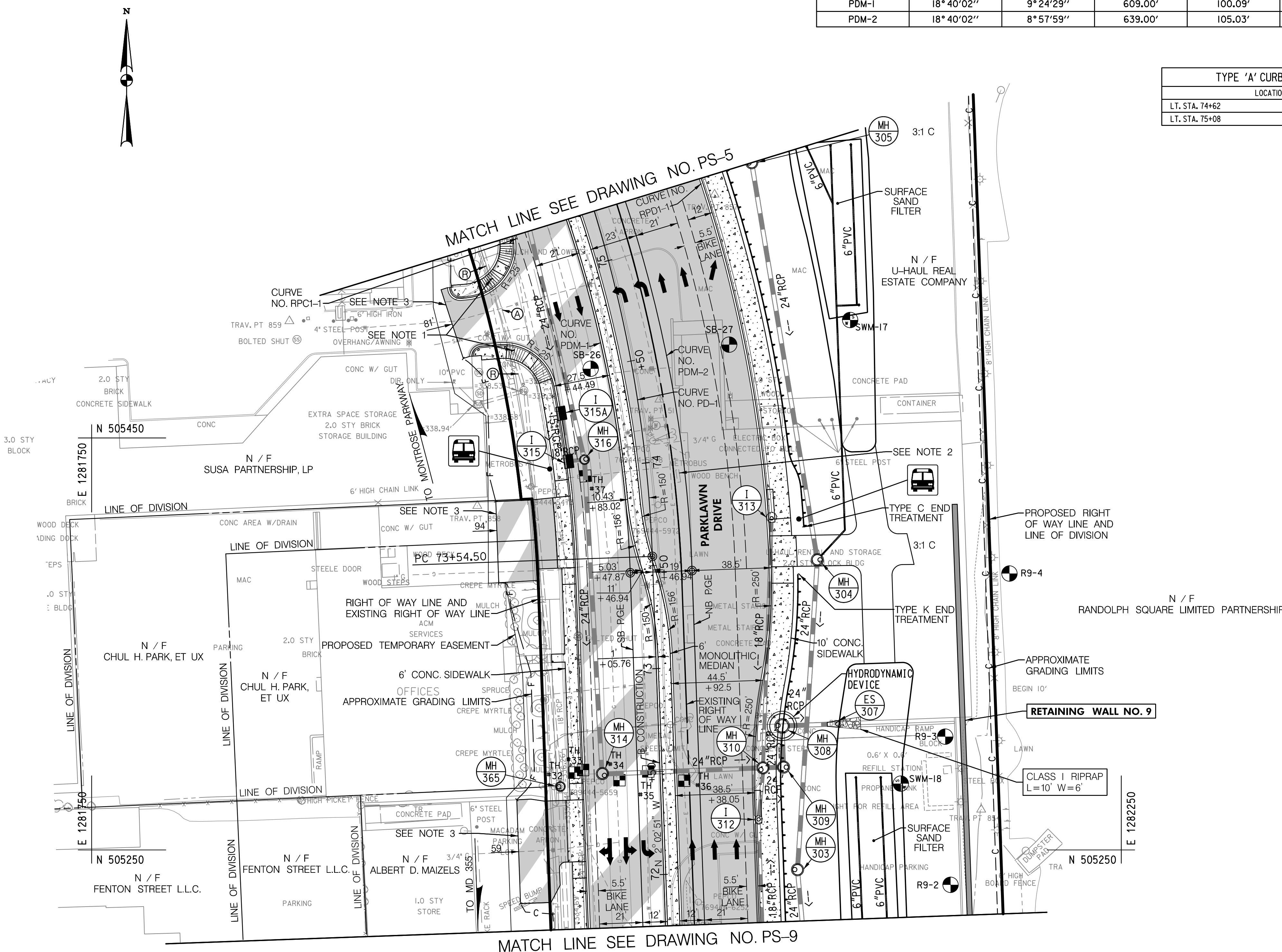


BY: daw

CURVE DATA						
CURVE	DELTA	Dc	RADIUS	TANGENT	LENGTH	EXTERNAL
PD-1	18° 40' 02"	8° 48' 53"	650.00'	106.83'	211.77'	8.72'
RPCI-1	87° 55' 52"	75° 23' 21"	76.00'	73.30'	116.64'	29.59'
RPDI-1	81° 59' 57"	56° 43' 43"	101.00'	87.80'	144.55'	32.83'
PDM-1	18° 40' 02"	9° 24' 29"	609.00'	100.09'	198.42'	8.17'
PDM-2	18° 40' 02"	8° 57' 59"	639.00'	105.03'	208.19'	8.57'

TYPE 'A' CURB ANY HEIGHT (MD 620.02)	
LOCATION - STATION	EA
LT. STA. 74+62	21
LT. STA. 75+08	21

TYPE 'A' COMBINATION CURB AND GUTTER (MD 620.02), 12" PAN, 10" DEPTH	
LOCATION - STATION	LF
LT. STA. 71+75 TO STA. 74+68.47	301
LT. STA. 75+08.07 TO STA. 75+25	54
RT. STA. 71+75 TO STA. 75+25	334
6' TYPE 'B-1' MONOLITHIC CONCRETE MEDIAN (MD 645.02), 12" PAN, 10" DEPTH	
LOCATION - STATION	LF
RT. STA. 71+75 TO LT. STA. 75+25	361
5" CONCRETE SIDEWALK	
LOCATION - STATION	SF
LT. STA. 71+75 TO STA. 74+68.47	1281
LT. STA. 75+08.07 TO STA. 75+25	254
RT. STA. 71+75 TO STA. 75+25	3358
SIDEWALK RAMPS	
LOCATION - STATION	
LT. STA. 74+62	PARALLEL
LT. STA. 75+08	PARALLEL
TYPE 'C' TRAFFIC BARRIER END TREATMENT (MD 605.03)	
LOCATION - STATION	EA
RT. STA. 73+65 TO STA. 74+15	1
TYPE 'K' TRAFFIC BARRIER END TREATMENT (MD 605.10)	
LOCATION - STATION	EA
RT. STA. 73+43	1
TRAFFIC BARRIER W-BEAM - 8 FOOT POST LENGTH (MD 605.25)	
LOCATION - STATION	LF
RT. STA. 71+75 TO STA. 73+43	169
RT. STA. 74+10 TO STA. 75+25	127
CLASS I RIPRAP	
LOCATION - STATION	SY
ES-307	4
REMOVE EXISTING PIPES	
LOCATION - STATION	LF
18" RCP LT. STA. 74+47 TO STA. 74+67	20
18" RCP LT. STA. 75+05 TO STA. 75+25	20
BRICK MASONRY FOR MISCELLANEOUS STRUCTURES	
LOCATION - STATION	CY
18" RCP LT. STA. 74+67	1
18" RCP LT. STA. 75+05	1
COMMERCIAL ENTRANCE	
LOCATION - STATION	SY
LT. STA. 72+22	30' WIDE
LT. STA. 73+68	35' WIDE
RT. STA. 73+54	15' WIDE
FLOWABLE BACKFILL FOR PIPE ABANDONMENT	
LOCATION - STATION	CY
18" RCP LT. STA. 74+67 TO STA. 75+05	3
6" PERFORATED CIRCULAR PIPE LONGITUDINAL UNDERDRAIN (MD 387.11)	
LOCATION - STATION	LF
RT. STA. 71+75 TO STA. 72+23	48
RT. STA. 72+27 TO STA. 72+47	20
RT. STA. 72+55 TO STA. 72+93	38
RT. STA. 73+72 TO STA. 75+27	155
LT. STA. 71+75 TO STA. 72+48	73
LT. STA. 72+50 TO STA. 74+01	151
LT. STA. 74+07 TO STA. 74+27	20
LT. STA. 74+31 TO STA. 74+44	13
6" CIRCULAR PIPE UNDERDRAIN OUTLET (MD 387.01)	
LOCATION - STATION	LF
RT. STA. 72+52 TO STA. 72+55	5
LT. STA. 72+50	9
LT. STA. 74+07	2
LT. STA. 74+31	2



NOTES:

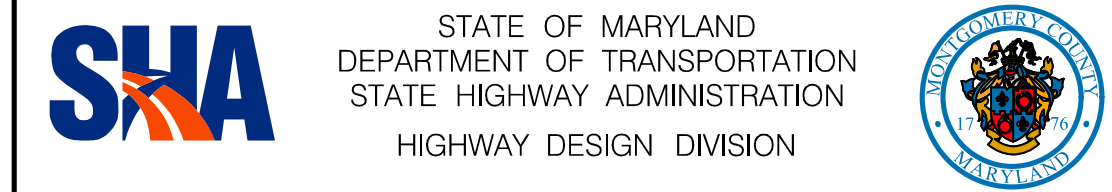
- BULKHEAD EXISTING 18" RCP USING 8" BRICK MASONRY AND FILL WITH FLOWABLE FILL.
- THE EXISTING BUS STOP BENCH STA. 73+93, 15' LEFT IS TO BE RELOCATED OR REPLACED BY OTHERS.
- THE LOSS OF PARKING LOT AREA SHOWN TO BE CONFINED TO A SINGLE 30-DAY PERIOD OR LESS. THE PROPERTY OWNER MUST BE NOTIFIED IN ADVANCE OF USE.

LEGEND

- CONCRETE (SIDEWALK, MONOLITHIC MEDIAN, ENTRANCE APRON, CONCRETE DITCH, ETC.)
- FULL DEPTH CONSTRUCTION
- RESURFACING
- BIO-SWALE / BIO-RETENTION
- SOIL STABILIZATION MATTING FOR DITCHES AND STORMWATER MANAGEMENT DEVICES
- REMOVAL OF EXISTING PAVEMENT

DATUM: NAD 8391 Horizontal
NAVD 88 Vertical

R / W PLAT NUMBER	CROSS REFERENCE	REVISIONS
	ITEM	SHEET NOS.
	TYPICAL SHEETS	4 - 17
	SUPERELEVATION SHEETS	22 - 24
	PIPE & DRAINAGE SCHEDULE	66 - 98
	GEOMETRIC LAYOUT SHEETS	19 - 21
	ROADWAY PLAN SHEETS	25 - 38
	ROADWAY PROFILE SHEETS	39 - 54
	TRAFFIC CONTROL SHEETS	121 - 141
	EROSION & SEDIMENT CONTROL	142 - 184
	SIGNING & MARKING PLANS	
	LANDSCAPE PLAN SHEETS	
	UTILITIES	

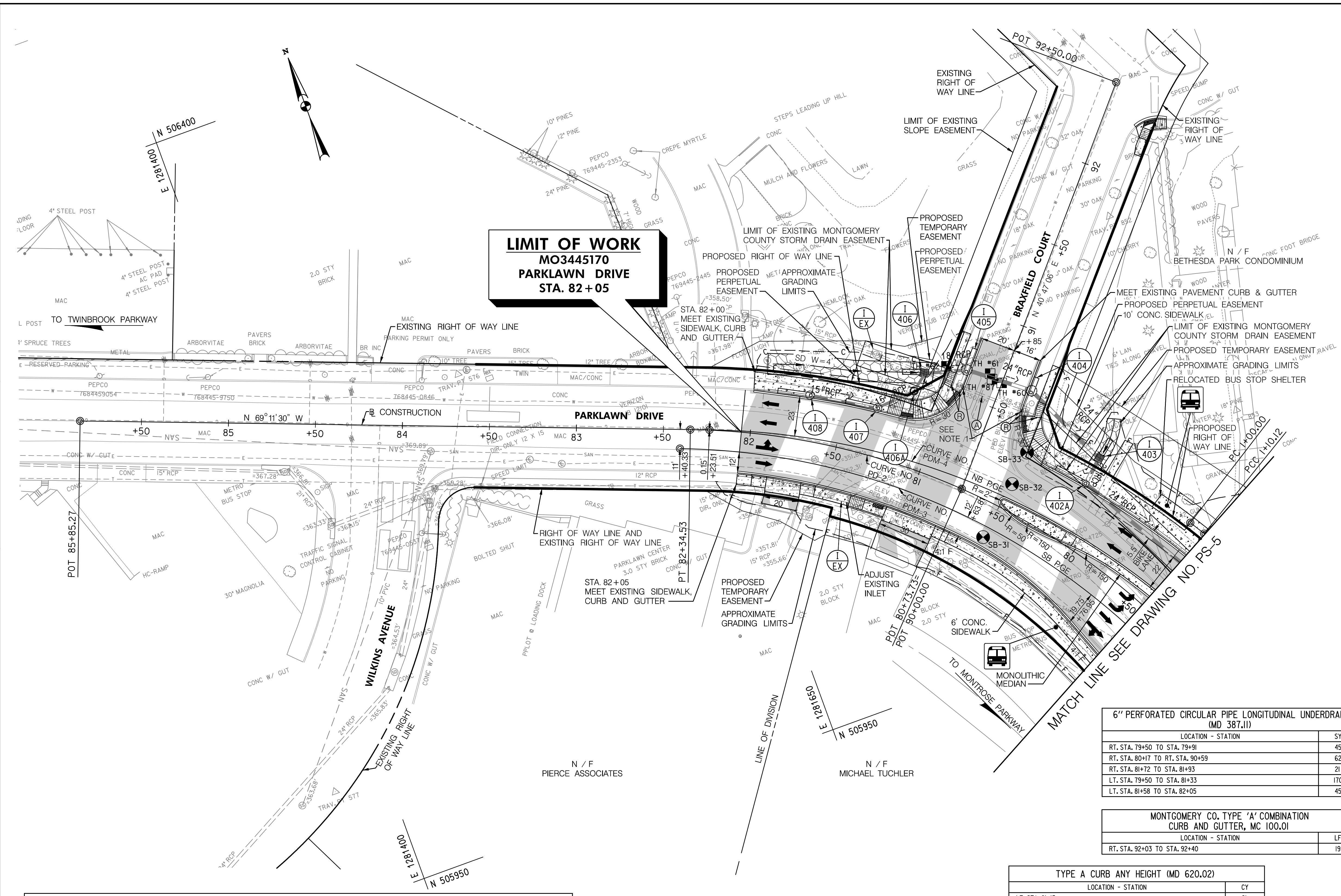


MD 355 PHASE 2
MONTROSE PARKWAY FROM WEST OF MAPLE / CHAPMAN AVENUE TO EAST OF PARKLAWN DRIVE

ROADWAY PLAN

SCALE 1" = 30'	ADVERTISED DATE	CONTRACT NO.	MO3445170
DESIGNED BY	DKL	COUNTY	MONTGOMERY
DRAWN BY	DAW	LOGMILE	
CHECKED BY	ERF		
F.A.P. NO.			
DRAWING NO.	PS - 10	OF	11
SHEET NO.			37





LIMIT OF WORK
MO3445170
PARKLAWN DRIVE
STA. 82+05

TYPE 'A' COMBINATION CURB AND GUTTER (MD 620.02), 12" PAN, 10" DEPTH		
LOCATION - STATION		LF
LT. STA. 79+50 TO STA. 82+05		218
RT. STA. 79+50 TO RT. STA. 90+85		147
LT. STA. 90+85 TO RT. STA. 82+00.40		III

TYPE 'B' COMBINATION CURB AND GUTTER (MD 620.02), 12" PAN, 10" DEPTH		
LOCATION - STATION		LF
RT. & LT. STA. 80+03 TO STA. 80+51 (MEDIAN)		99

VARIABLE WIDTH 4' TO 6' TYPE 'B-1' MONOLITHIC CONCRETE MEDIAN (MD 645.02), 12" PAN, 10" DEPTH		
LOCATION - STATION		LF
RT. STA. 79+50 TO STA. 80+03		53

5" CONCRETE SIDEWALK		
LOCATION - STATION		SF
LT. STA. 79+50 TO STA. 82+05		969
RT. STA. 79+50 TO STA. 90+85		1803
LT. STA. 90+85 TO RT. STA. 82+00.40		1321
RT. & LT. STA. 80+03 TO STA. 80+51 (MEDIAN)		276
RT. STA. 92+15 TO STA. 92+40		157

5" CONCRETE DITCH		
LOCATION - STATION		SY
I-406		4
I-403		4

SIDEWALK RAMPS		
LOCATION - STATION		PARALLEL
RT. STA. 90+46		PARALLEL
LT. STA. 90+46		PARALLEL
RT. STA. 81+10		PARALLEL
LT. STA. 81+15		PARALLEL
RT. STA. 92+37		COMBINED

DETECTABLE WARNING SURFACE		
LOCATION - STATION		SF
RT. STA. 90+46		19
LT. STA. 90+46		19
RT. STA. 81+07		19
LT. STA. 81+19		12
RT. STA. 92+37		14

TYPE 'A' SOIL STABILIZATION MATTING (MD 389.06 & MD 389.07)		
LOCATION - STATION		SY
RT. STA. 80+16 TO STA. 80+19		21
RT. STA. 81+10 TO STA. 81+94		122

REMOVE EXISTING INLET		
LOCATION - STATION		EA
LT. STA. 90+55		I
RT. STA. 90+55		I

REMOVE EXISTING PIPES		
LOCATION - STATION		LF
15" RCP LT. STA. 90+55		18

BRICK MASONRY FOR MISCELLANEOUS STRUCTURES		
LOCATION - STATION		CY
15" RCP LT. STA. 90+55		I
15" RCP RT. STA. 90+54		I

COMMERCIAL ENTRANCE		
LOCATION - STATION		SY
LT. STA. 80+96	30' WIDE	41
LT. STA. 81+77	20' WIDE	29

FLOWABLE BACKFILL FOR PIPE ABANDONMENT		
LOCATION - STATION		CY
15" RCP LT. STA. 90+55 TO RT. STA. 90+54		2

6" PERFORATED CIRCULAR PIPE LONGITUDINAL UNDERDRAIN (MD 387.11)		
LOCATION - STATION		SY
RT. STA. 79+50 TO STA. 79+91		45
RT. STA. 80+17 TO RT. STA. 90+59		62
RT. STA. 81+72 TO STA. 81+93		21
LT. STA. 79+50 TO STA. 81+33		170
LT. STA. 81+58 TO STA. 82+05		45

MONTGOMERY CO. TYPE 'A' COMBINATION CURB AND GUTTER, MC 100.01		
LOCATION - STATION		LF
RT. STA. 92+03 TO STA. 92+40		19

TYPE A CURB ANY HEIGHT (MD 620.02)		
LOCATION - STATION		CY
LT. STA. 81+15		21
LT. STA. 90+46 AND RT. STA. 81+07		53
RT. STA. 90+46		39

DATUM: NAD 8391 Horizontal
 NAVD 88 Vertical

CURVE DATA						
CURVE	DELTA	Dc	RADIUS	TANGENT	LENGTH	EXTERNAL
PD-2	48° 28' 38"	14° 19' 26"	400.00'	180.09'	338.43'	38.67'
PDM-3	48° 28' 38"	14° 41' 28"	390.00'	175.59'	329.97'	37.70'
PDM-4	48° 28' 38"	13° 38' 31"	420.00'	189.10'	355.36'	40.61'

- LEGEND**
- CONCRETE (SIDEWALK, MONOLITHIC MEDIAN, ENTRANCE APRON, CONCRETE DITCH, ETC.)
 - FULL DEPTH CONSTRUCTION
 - RESURFACING
 - BIO-SWALE / BIO-RETENTION
 - SOIL STABILIZATION MATTING FOR DITCHES AND STORMWATER MANAGEMENT DEVICES
 - REMOVAL OF EXISTING PAVEMENT

- NOTES:**
- BULKHEAD EXISTING 15" RCP USING 8" BRICK MASONRY AND FILL WITH FLOWABLE FILL.

R / W PLAT NUMBER	CROSS REFERENCE	REVISIONS
	ITEM	SHEET NOs.
	TYPICAL SHEETS	4 - 17
	SUPERELEVATION SHEETS	22 - 24
	PIPE & DRAINAGE SCHEDULE	66 - 98
	GEOMETRIC LAYOUT SHEETS	19 - 21
	ROADWAY PLAN SHEETS	25 - 38
	ROADWAY PROFILE SHEETS	39 - 54
	TRAFFIC CONTROL SHEETS	121 - 141
	EROSION & SEDIMENT CONTROL	142 - 184
	SIGNING & MARKING PLANS	
	LANDSCAPE PLAN SHEETS	
	UTILITIES	

SHA STATE OF MARYLAND
 DEPARTMENT OF TRANSPORTATION
 STATE HIGHWAY ADMINISTRATION
 HIGHWAY DESIGN DIVISION

MD 355 PHASE 2
 MONTROSE PARKWAY FROM WEST OF
 MAPLE / CHAPMAN AVENUE TO EAST OF PARKLAWN DRIVE

ROADWAY PLAN

SCALE 1" = 30' ADVERTISED DATE _____ CONTRACT NO. MO3445170

DESIGNED BY DKL COUNTY MONTGOMERY
 DRAWN BY DAW LOGMILE _____
 CHECKED BY ERF
 F.A.P. NO. _____

DRAWING NO. **PS-11** OF **11** SHEET NO. **38** OF

WB THE WILSON T. BALLARD CO.
 CONSULTING ENGINEERS | OWINGS MILLS, MD