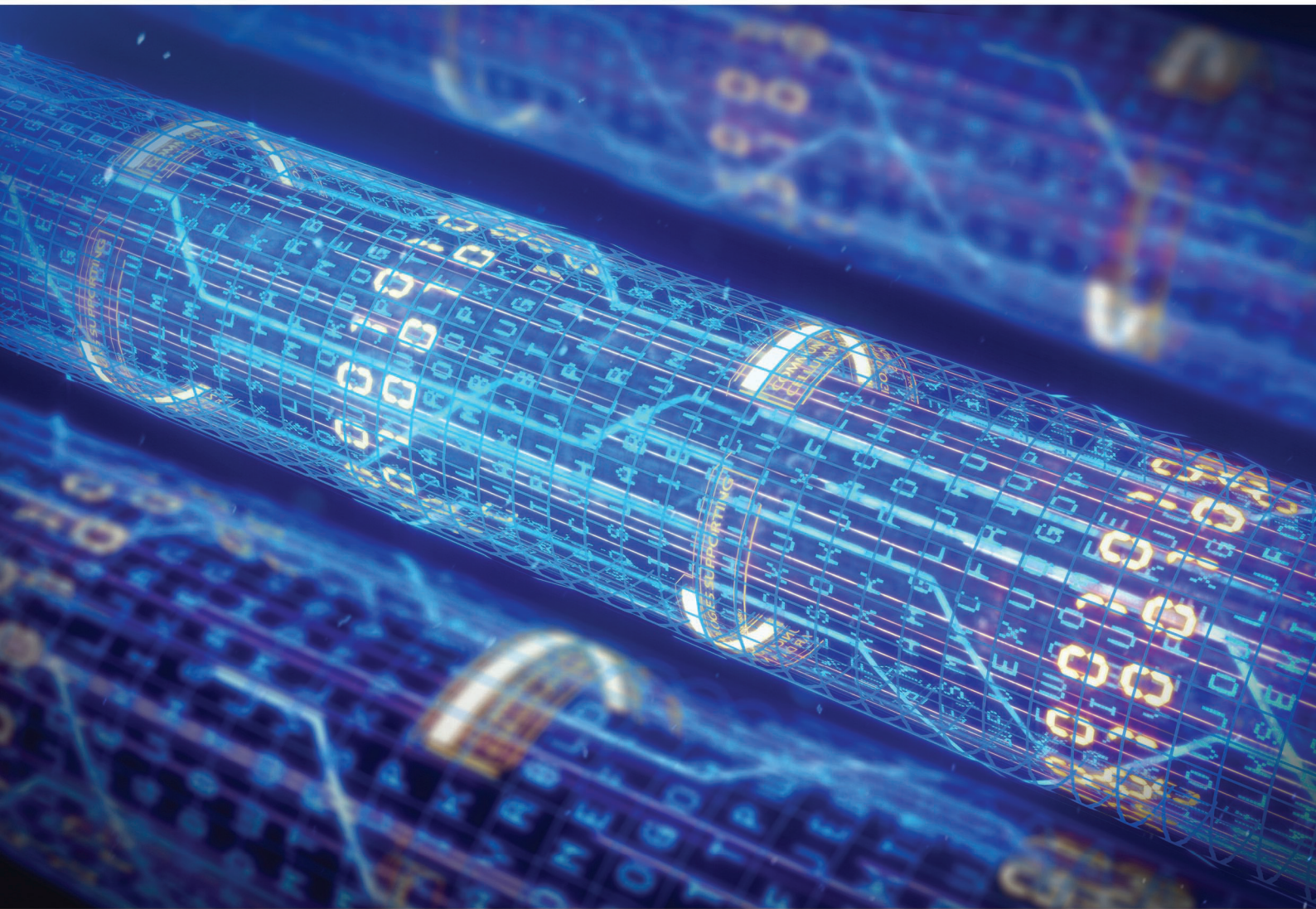


PRODUCT AND SOLUTIONS GUIDE

Quick Reference Guide: Fiber Sub Saharan Africa

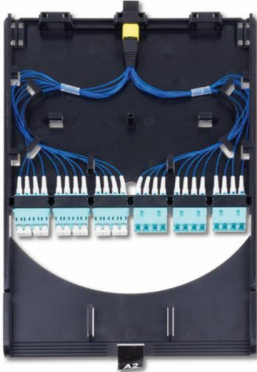
Q1 2024



molex

| | |
|---------------------------------|-----------|
| Enclosures | 3 |
| Adapters | 11 |
| Pigtails and Patch Cords | 13 |

Enclosures



High Density 1RU 144F Fiber Enclosure

Molex High Density Fiber Enclosures are designed for high density applications such as Data Centers, SAN, medical healthcare, central offices or any other situation where high performing, high density and quick installation is required. The enclosure is available in 1RU 144 fiber capacity through LC connector and has various kinds of modules to support different types of applications.

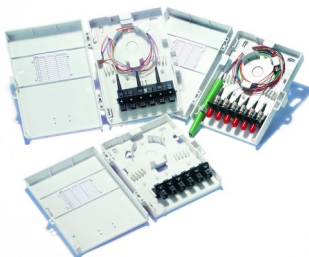
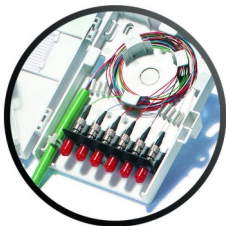
- Supports various kinds of modular cassettes
- Each Enclosure accommodates 6 cassettes
- Each MTP/MPO-LC preterminated cassette accommodates 24F fiber
- MTP-24, MTP-12, MTP-8 various kinds of MTP-LC cassettes
- OS2, OM3, OM4 & OM5 fiber optional for the MTP/MPO-LC modular cassettes
- Splicing and preterm solution supported
- Supports MTP/MPO and LC connector interface
- Designed for 10G/40G/100G/200G/400G system migration
- Inbuild front cable management tray on enclosure provides easy patch cord management capability
- Cassette inbuild with front cable tray to separate the patch cord for each cassette
- Spring cotter to achieve easy inserting and locking of the cassettes
- Low loss version for all fiber assembles

| Order No. | SAP No. | Description |
|-----------|-----------|---|
| HFR-10144 | 180660136 | HD Fiber Enclosure 1U 144F, Black |
| HFR-14401 | 181810303 | HD Cassette 24F 2XMTP(M)-LCD LL OS2, Black |
| HFR-14402 | 181810304 | HD Cassette 24F 2XMTP(M)-LCD LL OM3, Black |
| HFR-14403 | 181810305 | HD Cassette 24F 2XMTP(M)-LCD LL OM4, Black |
| HFR-14404 | 181810306 | HD Cassette 24F 2XMTP(M)-LCD LL OM5, Black |
| HFR-14405 | 181810307 | HD Cassette 24F 3XMTP(M)-LCD LL OS2, Black |
| HFR-14406 | 181810308 | HD Cassette 24F 3XMTP(M)-LCD LL OM3, Black |
| HFR-14407 | 181810309 | HD Cassette 24F 3XMTP(M)-LCD LL OM4, Black |
| HFR-14408 | 181810310 | HD Cassette 24F 3XMTP(M)-LCD LL OM5, Black |
| HFR-14409 | 181810311 | HD Cassette 24F 1XMTP(M)-LCD LL OS2, Black |
| HFR-14410 | 181810312 | HD Cassette 24F 1XMTP(M)-LCD LL OM3, Black |
| HFR-14411 | 181810313 | HD Cassette 24F 1XMTP(M)-LCD LL OM4, Black |
| HFR-14412 | 181810314 | HD Cassette 24F 1XMTP(M)-LCD LL OM5, Black |
| HFR-14413 | 181810315 | HD Cassette 24F LCD Pigtail LL OS2, Black |
| HFR-14414 | 181170023 | RJ45-RJ12 DataGate Conversion Cap (bag of 20) - Green |
| HFR-14415 | 181170024 | RJ45-RJ12 DataGate Conversion Cap (bag of 20) - Red |
| HFR-14416 | 181170025 | RJ45-RJ12 DataGate Conversion Cap (bag of 20) - Yellow |
| HFR-14417 | 183020021 | F/FTP cable PowerCat6A (10G), 4 pairs, LSZH, class Dca s1a, d1, a1 acc. 13501-6, 500m, Purple |
| HFR-14418 | 183530004 | S/FTP cable cat. 7 600MHz, 4 pairs, 23AWG, LSZH, class Eca 13501-6, 1000m, Purple |
| HFR-14419 | 181750042 | PowerCat 6 F/UTP cable, 4 pairs, outdoor UV/PE, Fca class acc. 13501-6, 500m, Black |
| HFR-14420 | 18181031 | HD Cassette 24F LCD Pigtail LL OM3, Black |
| HFR-14421 | 181810317 | HD Cassette 24F LCD Pigtail LL OM4, Black |
| HFR-14422 | 181810318 | HD Cassette 24F LCD Pigtail LL OM5, Black |

601 Fiber Enclosure

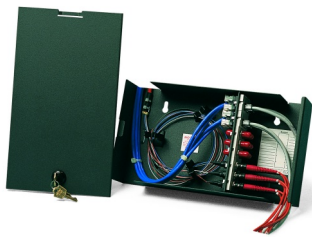
The 601 Fiber series wall mount system interface products are compact units for fiber optics. Available in ST, Duplex SC and LC versions they provide either 6, 8 or 12 fiber ports, or 24 ports in the MTP version. The 601 fiber enclosure has a low profile design and provides the proper internal fiber management to ensure the integrity of the optical network. There is also provision for a user supplied seal for added security.

- Compact unit - 184mm x 127mm x 38mm
- Up to 24 Ports
- Available in Singlemode and Multimode fiber versions
- Available in ST, Duplex SC & LC versions
- Top, bottom and rear access



| Order No. | SAP No. | Description |
|--------------|---------------|--|
| WFR-00010-02 | 180970009 | 6 Port ST 601 Enclosure, Multimode |
| WFR-00024-02 | Consult Molex | 8 Port ST 601 Enclosure, Unloaded |
| WFR-00025-02 | 180970013 | 8 Port ST 601 Enclosure, Multimode |
| WFR-00027-02 | 180970015 | 8 Port Duplex SC 601 Enclosure, Unloaded |
| WFR-00028-02 | 180970016 | 8 Port Duplex SC 601 Enclosure, Multimode |
| WFR-00029-02 | 180970017 | 8 Port Duplex SC 601 Enclosure, Singlemode |
| WFR-00033-02 | 180970078 | 12 Port LC 601 Enclosure, Unloaded |
| WFR-00034-02 | 180970079 | 12 Port LC 601 Enclosure, Multimode |
| WFR-00035-02 | 180970080 | 12 Port LC 601 Enclosure, Singlemode |

Enclosures



WM-12

The WM-12 is a wall-mounted steel enclosure that provides up to 18 fiber ports in a minimum of space. The WM-12 has an integral configurable panel that accepts up to six Euromod modules. Modules may be mixed for UTP, FTP, optical fiber and coax, making it the most versatile and compact wall mount enclosure for mixed media. Its design also guarantees that all of the media will be protected and proper fiber bend radius is maintained.

- Up to 18 fiber ports
- Fully configurable using Molex Euromod modules
- Available with fully lockable steel doors when security is a primary concern

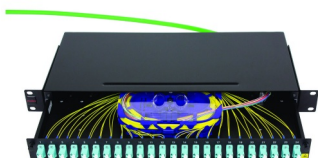
| Order No. | SAP No. | Description |
|-----------|-----------|----------------------|
| WFR-00018 | 180090008 | WM12 - Graphite Gray |

Utility Fiber Enclosure 1U 24 Port Duplex LC

A cost-effective and convenient sliding drawer unit for the connection, protection and management of up to 48 fibers in 1U. Designed for simple low-density fiber installations on a budget, the Utility Fiber Enclosure includes only the essential features for the connection, protection and management of up to 48 fibers in 1U.

- Robust steel construction, finished in black
- Sliding drawer unit for ease of installation and access
- A self-adhesive splice holder, a M20 gland, blank grommet, kevlar clamp and fixing kit are included
- Rear access apertures provide four convenient cable or pre-terminated harness assembly, entry options

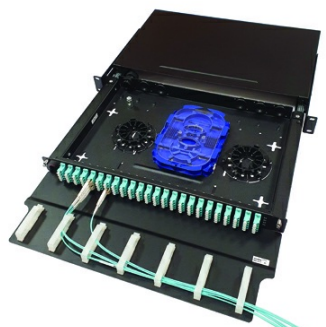
| Order No. | SAP No. | Description |
|-----------|-----------|---|
| RFR-00326 | 180660097 | Utility Fiber Enclosure, 1U DLC, 48F - Unloaded |



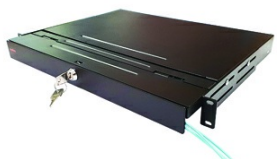
1U Multi-Function Fiber Enclosure Gen II

The 1U Multi-Function Fiber Enclosure is a configurable rack mount unit for storing and terminating incoming fiber cable. The fiber enclosure has been designed to accommodate various termination types and adapter configurations. The floor of the enclosure is constructed to allow maximum flexibility in routing fibers. Constructed with a ball bearing slide mechanism allows ease of access to fibers. The interchangeable front plate facilitates upgrades as required. The enclosure has an optional front locking kit and an optional front cable management to securely route patch cords.

- Accommodates up to 4 ModLink Quick Connect Cassettes which allows 12-24 fiber connections per cassette with various interfacing adapters
- Accommodates up to 4 Modular Splice Cassettes which allows 6-24 fiber connections per cassette. The cassettes allow for splice termination while protecting individual fibers
- Compatible with preloaded FMP 3 style adapter plates in various fiber counts and adapter configurations
- Self-adhesive fiber management hub is stackable and can be segmented providing individualization of fiber routing
- Optional 24 fiber splice tray available to maximize port capacity while providing fiber management for excess fiber
- Optional front cable management allows secure routing of patch cords
- Optional locking kits provide security with over-locking curved cam lock locking into the top of the enclosure. The hinged top allows easy moves, adds and changes, and can be retrofitted
- Compatible with Molex's 6 Pak Adapter plate program that allows 6-24 fiber connections per plate, 72 fiber MTP connections and 3 DataGate copper/synergy connections per plate
- Colors: AQ = Aqua, GR = Green, BL = Blue, EV = Erika Violet, LG = Lime Green, OL = Beige



RFR-00311-BK
Shown assembled with:
AFR-00616-AQ LC Quad Plate
AFR-00470 Splice Tray
KFR-00053 Cable Management Hub
AFR-00475 Kevlar Retention Post



RFR-00311-BK
Shown assembled with
RFR-00312-BK Locking front assembly

| Order No. | SAP No. | Description |
|--|-----------|---|
| RFR-00311-BK | 180370287 | 1U Multi-Function Fiber Enclosure Gen II |
| Optional Enhancements | | |
| RFR-00312-BK | 180370288 | Locking Front Assembly Kit for 1U Multi-Function Fiber Enclosure Gen II |
| CMA-00111 | 181050048 | Front Cable Manager for 1U Multi-Function Fiber Enclosure Gen II |
| AFR-00468-04 | 180600394 | 6 Pak Adapter Front Plate |
| AFR-00469-04 | 180600395 | Full Length Blanking Plate |
| AFR-00689-04 | 180600526 | SC Simplex/LC Duplex, 1 Port Adapter Plate, Unloaded |
| AFR-00690-04 | 180600527 | MTP/MPO, 1 Port Adapter Plate, Unloaded |
| AFR-00802 | 180810066 | Jack Plate 19 |
| RFR-00311-BK Specific Unloaded Adapter Plates | | |
| AFR-00518-04 | 180600396 | SC Duplex, 12 Fiber Adapter Plate, Unloaded, Black |
| AFR-00519-04 | 180600397 | LC Quad, 24 Fiber Adapter Plate, Unloaded, Black |
| AFR-00537-04 | 180600398 | SC Simplex, 6 Fiber Adapter Plate, Unloaded, Black |

Enclosures

| Order No. | SAP No. | Description |
|---|-----------|---|
| AFR-00538-04 | 180600399 | LC Duplex, 12 Fiber Adapter Plate, Unloaded, Black |
| AFR-00539-04 | 180600400 | SC Simplex, 12 Fiber Adapter Plate, Unloaded, Black |
| AFR-00540-04 | 180600401 | LC Duplex, 24 Fiber Adapter Plate, Unloaded, Black |
| AFR-00476-04 | 180600375 | SC Simplex, 24 Fiber Adapter Plate, Unloaded, Black |
| AFR-00477-04 | 180600376 | LC Duplex, 48 Fiber Adapter Plate, Unloaded, Black |
| AFR-00478-04 | 180600377 | SC Duplex, 48 Fiber Adapter Plate, Unloaded, Black |
| AFR-00479-04 | 180600378 | LC Quad, 96 Fiber Adapter Plate, Unloaded, Black |
| AFR-00480-04 | 180600379 | SC Duplex, 24 Fiber Adapter Plate, Unloaded, Black |
| AFR-00481-04 | 180600380 | LC Quad, 48 Fiber Adapter Plate, Unloaded, Black |
| AFR-00483-04 | 180600381 | SC Duplex, 36 Fiber Adapter Plate, Unloaded, Black |
| AFR-00484-04 | 180600382 | FC/ST, 24 Fiber Adapter Plate, Unloaded, Black |
| AFR-00598-BL | 180600392 | SC Simplex, 24 Fiber Adapter Plate, Unshuttered, Singlemode, OS1/2, Blue |
| AFR-00599-GR | 180600393 | SC/APC Simplex, 24 Fiber Adapter Plate, Unshuttered, Singlemode, OS1/2, Green |
| AFR-00600-OL | 180600402 | SC Simplex, 24 Fiber Adapter Plate, Unshuttered, Multimode, OM1/OM2, Beige |
| AFR-00601-AQ | 180600403 | SC Simplex, 24 Fiber Adapter Plate, Unshuttered, Multimode, OM3/OM4, Aqua |
| AFR-00602-EV | 180600404 | SC Simplex, 24 Fiber Adapter Plate, Unshuttered, Multimode, OM4, Erika Violet |
| AFR-00608-BL | 180600410 | SC Duplex, 48 Fiber Adapter Plate, Unshuttered, Singlemode, OS1/2, Blue |
| AFR-00609-GR | 180600411 | SC/APC Duplex, 48 Fiber Adapter Plate, Unshuttered, Singlemode, OS1/2, Green |
| AFR-00610-OL | 180600412 | SC Duplex, 48 Fiber Adapter Plate, Unshuttered, Multimode, OM1/OM2, Beige |
| AFR-00611-AQ | 180600413 | SC Duplex, 48 Fiber Adapter Plate, Unshuttered, Multimode, OM3/OM4, Aqua |
| AFR-00612-EV | 180600414 | SC Duplex, 48 Fiber Adapter Plate, Unshuttered, Multimode, OM4, Erika Violet |
| AFR-00618-BL | 180600420 | SC Duplex, 24 Fiber Adapter Plate, Unshuttered, Singlemode, OS1/2, Blue |
| AFR-00619-GR | 180600421 | SC/APC Duplex, 24 Fiber Adapter Plate, Unshuttered, Singlemode, OS1/2, Green |
| RFR-00311-BK Specific Loaded Adapter Plates: SC, Unshuttered | | |
| AFR-00620-OL | 180600422 | SC Duplex, 24 Fiber Adapter Plate, Unshuttered, Multimode, OM1/OM2, Beige |
| AFR-00621-AQ | 180600423 | SC Duplex, 24 Fiber Adapter Plate, Unshuttered, Multimode, OM3/OM4, Aqua |
| AFR-00622-EV | 180600424 | SC Duplex, 24 Fiber Adapter Plate, Unshuttered, Multimode, OM4, Erika Violet |
| AFR-00467-04 | 180600432 | ST Simplex, 24 Fiber Adapter Plate, Unshuttered, Singlemode/Multimode, Black |
| AFR-00628-BL | 180600433 | SC Duplex, 36 Fiber Adapter Plate, Unshuttered, Singlemode, OS1/2, Blue |
| AFR-00629-GR | 180600434 | SC/APC Duplex, 36 Fiber Adapter Plate, Unshuttered, Singlemode, OS1/2, Green |
| AFR-00630-OL | 180600435 | SC Duplex, 36 Fiber Adapter Plate, Unshuttered, Multimode, OM1/OM2, Beige |
| AFR-00631-AQ | 180600436 | SC Duplex, 36 Fiber Adapter Plate, Unshuttered, Multimode, OM3/OM4, Aqua |
| AFR-00632-EV | 180600437 | SC Duplex, 36 Fiber Adapter Plate, Unshuttered, Multimode, OM4, Erika Violet |
| AFR-00633-BL | 180600438 | SC Simplex, 6 Fiber Adapter Plate, Unshuttered, Singlemode, OS1/2, Blue |
| AFR-00634-GR | 180600439 | SC/APC Simplex, 6 Fiber Adapter Plate, Unshuttered, Singlemode, OS1/2, Green |
| AFR-00635-OL | 180600440 | SC Simplex, 6 Fiber Adapter Plate, Unshuttered, Multimode, OM1/OM2, Beige |
| AFR-00636-AQ | 180600441 | SC Simplex, 6 Fiber Adapter Plate, Unshuttered, Multimode, OM3/OM4, Aqua |
| AFR-00637-EV | 180600442 | SC Simplex, 6 Fiber Adapter Plate, Unshuttered, Multimode, OM4, Erika Violet |
| AFR-00643-BL | 180600448 | SC Duplex, 12 Fiber Adapter Plate, Unshuttered, Singlemode, OS1/2, Blue |
| AFR-00644-GR | 180600449 | SC/APC Duplex, 12 Fiber Adapter Plate, Unshuttered, Singlemode, OS1/2, Green |
| AFR-00645-OL | 180600450 | SC Duplex, 12 Fiber Adapter Plate, Unshuttered, Multimode, OM1/OM2, Beige |
| AFR-00646-AQ | 180600451 | SC Duplex, 12 Fiber Adapter Plate, Unshuttered, Multimode, OM3/OM4, Aqua |
| AFR-00647-EV | 180600452 | SC Duplex, 12 Fiber Adapter Plate, Unshuttered, Multimode, OM4, Erika Violet |
| AFR-00690-LG | 180600460 | SC Duplex 48 Fiber Adapter Plate, Unshuttered, Multimode, OM5, Lime Green |
| AFR-00692-LG | 180600462 | SC Duplex 24 Fiber Adapter Plate, Unshuttered, Multimode, OM5, Lime Green |
| AFR-00694-LG | 180600464 | SC Duplex, 36 Fiber Adapter Plate, Unshuttered, Multimode, OM5, Lime Green |
| AFR-00695-LG | 180600465 | SC Simplex, 6 Fiber Adapter Plate, Unshuttered, Multimode, OM5, Lime Green |
| AFR-00697-LG | 180600467 | SC Duplex, 12 Fiber Adapter Plate, Unshuttered, Multimode, OM5, Lime Green |
| RFR-00311-BK Specific Loaded Adapter Plates: SC, Shuttered | | |

Enclosures

| Order No. | SAP No. | Description |
|---|-----------|--|
| AFR-00699-LG | 180600469 | SC Simplex, 6 Fiber Adapter Plate, Shuttered, Multimode, OM5, Lime Green |
| AFR-00701-LG | 180600471 | SC Duplex, 12 Fiber Adapter Plate, Shuttered, Multimode, OM5, Lime Green |
| AFR-00703-LG | 180600473 | SC Duplex, 24 Fiber Adapter Plate, Shuttered, Multimode, OM5, Lime Green |
| AFR-00728-BL | 180600496 | SC Simplex, 6 Fiber Adapter Plate, Shuttered, Singlemode, OS1/2, Blue |
| AFR-00729-GR | 180600497 | SC/APC Simplex, 6 Fiber Adapter Plate, Shuttered, Singlemode, OS1/2, Green |
| AFR-00730-OL | 180600498 | SC Simplex, 6 Fiber Adapter Plate, Shuttered, Multimode, OM1/OM2, Beige |
| AFR-00731-AQ | 180600499 | SC Simplex, 6 Fiber Adapter Plate, Shuttered, Multimode, OM3/OM4, Aqua |
| AFR-00732-EV | 180600500 | SC Simplex, 6 Fiber Adapter Plate, Shuttered, Multimode, OM4, Erika Violet |
| AFR-00738-BL | 180600506 | SC Simplex, 12 Fiber Adapter Plate, Shuttered, Singlemode, OS1/2, Blue |
| AFR-00739-GR | 180600507 | SC/APC Simplex, 12 Fiber Adapter Plate, Shuttered, Singlemode, OS1/2, Green |
| AFR-00740-OL | 180600508 | SC Simplex, 12 Fiber Adapter Plate, Shuttered, Multimode, OM1/OM2, Beige |
| AFR-00741-AQ | 180600509 | SC Simplex, 12 Fiber Adapter Plate, Shuttered, Multimode, OM3/OM4, Aqua |
| AFR-00742-EV | 180600510 | SC Simplex, 12 Fiber Adapter Plate, Shuttered, Multimode, OM4, Erika Violet |
| AFR-00748-BL | 180600516 | SC Duplex, 24 Fiber Adapter Plate, Shuttered, Singlemode, OS1/2, Blue |
| AFR-00749-GR | 180600517 | SC/APC Duplex, 24 Fiber Adapter Plate, Shuttered, Singlemode, OS1/2, Green |
| AFR-00750-OL | 180600518 | SC Duplex, 24 Fiber Adapter Plate, Shuttered, Multimode, OM1/OM2, Beige |
| AFR-00751-AQ | 180600519 | SC Duplex, 24 Fiber Adapter Plate, Shuttered, Multimode, OM3/OM4, Aqua |
| AFR-00752-EV | 180600520 | SC Duplex, 24 Fiber Adapter Plate, Shuttered, Multimode, OM4, Erika Violet |
| RFR-00311-BK Specific Loaded Adapter Plates: LC, Unshuttered | | |
| AFR-00603-BL | 180600405 | LC Duplex, 48 Fiber Adapter Plate, Unshuttered, Singlemode, OS1/2, Blue |
| AFR-00604-GR | 180600406 | LC/APC Duplex, 48 Fiber Adapter Plate, Unshuttered, Singlemode, OS1/2, Green |
| AFR-00605-OL | 180600407 | LC Duplex, 48 Fiber Adapter Plate, Unshuttered, Multimode, OM1/OM2, Beige |
| AFR-00606-AQ | 180600408 | LC Duplex, 48 Fiber Adapter Plate, Unshuttered, Multimode, OM3/OM4, Aqua |
| AFR-00607-EV | 180600409 | LC Duplex, 48 Fiber Adapter Plate, Unshuttered, Multimode, OM4, Erika Violet |
| AFR-00613-BL | 180600415 | LC Quad, 96 Fiber Adapter Plate, Unshuttered, Singlemode, OS1/2, Blue |
| AFR-00614-GR | 180600416 | LC/APC Quad, 96 Fiber Adapter Plate, Unshuttered, Singlemode, OS1/2, Green |
| AFR-00615-OL | 180600417 | LC Quad, 96 Fiber Adapter Plate, Unshuttered, Multimode, OM1/OM2, Beige |
| AFR-00616-AQ | 180600418 | LC Quad, 96 Fiber Adapter Plate, Unshuttered, Multimode, OM3/OM4, Aqua |
| AFR-00617-EV | 180600419 | LC Quad, 96 Fiber Adapter Plate, Unshuttered, Multimode, OM4, Erika Violet |
| AFR-00623-BL | 180600425 | LC Quad, 48 Fiber Adapter Plate, Unshuttered, Singlemode, OS1/2, Blue |
| AFR-00624-GR | 180600426 | LC/APC Quad, 48 Fiber Adapter Plate, Unshuttered, Singlemode, OS1/2, Green |
| AFR-00625-OL | 180600427 | LC Quad, 48 Fiber Adapter Plate, Unshuttered, Multimode, OM1/OM2, Beige |
| AFR-00627-EV | 180600429 | LC Quad, 48 Fiber Adapter Plate, Unshuttered, Multimode, OM4, Erika Violet |
| AFR-00638-BL | 180600443 | LC Duplex, 12 Fiber Adapter Plate, Unshuttered, Singlemode, OS1/2, Blue |
| AFR-00639-GR | 180600444 | LC/APC Duplex, 12 Fiber Adapter Plate, Unshuttered, Singlemode, OS1/2, Green |
| AFR-00640-OL | 180600445 | LC Duplex, 12 Fiber Adapter Plate, Unshuttered, Multimode, OM1/OM2, Beige |
| AFR-00641-AQ | 180600446 | LC Duplex, 12 Fiber Adapter Plate, Unshuttered, Multimode, OM3/OM4, Aqua |
| AFR-00642-EV | 180600447 | LC Duplex, 12 Fiber Adapter Plate, Unshuttered, Multimode, OM4, Erika Violet |
| AFR-00648-BL | 180600453 | LC Quad, 24 Fiber Adapter Plate, Unshuttered, Singlemode, OS1/2, Blue |
| AFR-00649-GR | 180600454 | LC/APC Quad, 24 Fiber Adapter Plate, Unshuttered, Singlemode, OS1/2, Green |
| AFR-00650-OL | 180600455 | LC Quad, 24 Fiber Adapter Plate, Unshuttered, Multimode, OM1/OM2, Beige |
| AFR-00651-AQ | 180600456 | LC Quad, 24 Fiber Adapter Plate, Unshuttered, Multimode, OM3/OM4, Aqua |
| AFR-00652-EV | 180600457 | LC Quad, 24 Fiber Adapter Plate, Unshuttered, Multimode, OM4, Erika Violet |

Enclosures

| Order No. | SAP No. | Description |
|---|-----------|---|
| AFR-00689-LG | 180600459 | LC Duplex, 48 Fiber Adapter Plate, Unshuttered, Multimode, OM5, Lime Green |
| AFR-00691-LG | 180600461 | LC Quad, 96 Fiber Adapter Plate, Unshuttered, Multimode, OM5, Lime Green |
| AFR-00693-LG | 180600463 | LC Quad, 48 Fiber Adapter Plate, Unshuttered, Multimode, OM5, Lime Green |
| AFR-00696-LG | 180600466 | LC Duplex, 12 Fiber Adapter Plate, Unshuttered, Multimode, OM5, Lime Green |
| AFR-00698-LG | 180600468 | LC Quad, 24 Fiber Adapter Plate, Unshuttered, Multimode, OM5, Lime Green |
| RFR-00311-BK Specific Loaded Adapter Plates: LC, Shuttered | | |
| AFR-00669-LG | 180600474 | LC Quad, 48 Fiber Adapter Plate, Shuttered, Multimode, OM5, Lime Green |
| AFR-00700-LG | 180600470 | LC Duplex, 12 Fiber Adapter Plate, Shuttered, Multimode, OM5, Lime Green |
| AFR-00702-LG | 180600472 | LC Duplex, 24 Fiber Adapter Plate, Shuttered, Multimode, OM5, Lime Green |
| AFR-00733-BL | 180600501 | LC Duplex, 12 Fiber Adapter Plate, Shuttered, Singlemode, OS1/2, Blue |
| AFR-00734-GR | 180600502 | LC/APC Duplex, 12 Fiber Adapter Plate, Shuttered, Singlemode, OS1/2, Green |
| AFR-00735-OL | 180600503 | LC Duplex, 12 Fiber Adapter Plate, Shuttered, Multimode, OM1/OM2, Beige |
| AFR-00736-AQ | 180600504 | LC Duplex, 12 Fiber Adapter Plate, Shuttered, Multimode, OM3/OM4, Aqua |
| AFR-00737-EV | 180600505 | LC Duplex, 12 Fiber Adapter Plate, Shuttered, Multimode, OM4, Erika Violet |
| AFR-00743-BL | 180600511 | LC Duplex, 24 Fiber Adapter Plate, Shuttered, Singlemode, OS1/2, Blue |
| AFR-00744-GR | 180600512 | LC/APC Duplex, 24 Fiber Adapter Plate, Shuttered, Singlemode, OS1/2, Green |
| AFR-00745-OL | 180600513 | LC Duplex, 24 Fiber Adapter Plate, Shuttered, Multimode, OM1/OM2, Beige |
| AFR-00746-AQ | 180600514 | LC Duplex, 24 Fiber Adapter Plate, Shuttered, Multimode, OM3/OM4, Aqua |
| AFR-00747-EV | 180600515 | LC Duplex, 24 Fiber Adapter Plate, Shuttered, Multimode, OM4, Erika Violet |
| AFR-00753-BL | 180600521 | LC Quad, 48 Fiber Adapter Plate, Shuttered, Singlemode, OS1/2, Blue |
| AFR-00754-GR | 180600522 | LC/APC Quad, 48 Fiber Adapter Plate, Shuttered, Singlemode, OS1/2, Green |
| AFR-00755-OL | 180600523 | LC Quad, 48 Fiber Adapter Plate, Shuttered, Multimode, OM1/OM2, Beige |
| AFR-00756-AQ | 180600524 | LC Quad, 48 Fiber Adapter Plate, Shuttered, Multimode, OM3/OM4, Aqua |
| AFR-00757-EV | 180600525 | LC Quad, 48 Fiber Adapter Plate, Shuttered, Multimode, OM4, Erika Violet |
| AFR-00809-BL | 180600621 | LC Duplex, 48 Fiber Adapter Plate, Internal Shuttered, Singlemode, OS1/OS2, Blue |
| AFR-00810-AQ | 180600622 | LC Duplex, 48 Fiber Adapter Plate, Internal Shuttered, Multimode, OM3/OM4, Aqua |
| AFR-00811-EV | 180600623 | LC Duplex, 48 Fiber Adapter Plate, Internal Shuttered, Multimode, OM4, Erika Violet |
| AFR-00812-LG | 180600624 | LC Duplex, 48 Fiber Adapter Plate, Internal Shuttered, Multimode, OM5, Lime Green |
| RFR-00311-BK Specific FTTX Adapter Plates | | |
| AFR-00766 | 180600537 | LC, 4x64 Fiber Adapter Plate, Unloaded |
| AFR-00769 | 180600540 | SC, 2x32 Fiber Adapter Plate, Unloaded |
| AFR-00762-BL | 180600533 | LC, 4x64 Fiber Adapter Plate, Loaded, Shuttered, Blue |
| AFR-00762-GR | 180600557 | LC, 4x64 Fiber Adapter Plate, Loaded, Shuttered, Green |
| AFR-00763-BL | 180600534 | LC, 2x64 Fiber Adapter Plate, Loaded, Shuttered, Blue |
| AFR-00763-GR | 180600558 | LC, 2x64 Fiber Adapter Plate, Loaded, Shuttered, Green |
| AFR-00764-BL | 180600535 | SC, 2x32 Fiber Adapter Plate, Loaded, Shuttered, Blue |
| AFR-00764-GR | 180600559 | SC, 2x32 Fiber Adapter Plate, Loaded, Shuttered, Green |
| AFR-00765-BL | 180600536 | SC, 1x32 Fiber Adapter Plate, Loaded, Shuttered, Blue |
| AFR-00765-GR | 180600560 | SC, 1x32 Fiber Adapter Plate, Loaded, Shuttered, Green |
| AFR-00786-BL | 180600561 | LC, 4x32 Fiber Adapter Plate, Loaded, Shuttered, Blue |
| AFR-00786-GR | 180600567 | LC, 4x32 Fiber Adapter Plate, Loaded, Shuttered, Green |
| AFR-00787-BL | 180600562 | LC, 4x16 Fiber Adapter Plate, Loaded, Shuttered, Blue |
| AFR-00787-GR | 180600568 | LC, 4x16 Fiber Adapter Plate, Loaded, Shuttered, Green |
| AFR-00790-BL | 180600565 | LC, 1x32 Fiber Adapter Plate, Loaded, Shuttered, Blue |
| AFR-00790-GR | 180600571 | LC, 1x32 Fiber Adapter Plate, Loaded, Shuttered, Green |
| AFR-00791-BL | 180600566 | LC, 1x16 Fiber Adapter Plate, Loaded, Shuttered, Blue |
| AFR-00791-GR | 180600572 | LC, 1x16 Fiber Adapter Plate, Loaded, Shuttered, Green |
| AFR-00798-BL | 180600573 | SC, 2x16 Fiber Adapter Plate, Loaded, Shuttered, Blue |
| AFR-00798-GR | 180600577 | SC, 2x16 Fiber Adapter Plate, Loaded, Shuttered, Green |
| AFR-00799-BL | 180600574 | SC, 2x8 Fiber Adapter Plate, Loaded, Shuttered, Blue |
| AFR-00799-GR | 180600578 | SC, 2x8 Fiber Adapter Plate, Loaded, Shuttered, Green |
| AFR-00800-BL | 180600575 | SC, 1x16 Fiber Adapter Plate, Loaded, Shuttered, Blue |
| AFR-00800-GR | 180600579 | SC, 1x16 Fiber Adapter Plate, Loaded, Shuttered, Green |
| AFR-00801-BL | 180600576 | SC, 1x8 Fiber Adapter Plate, Loaded, Shuttered, Blue |
| AFR-00801-GR | 180600580 | SC, 1x8 Fiber Adapter Plate, Loaded, Shuttered, Green |
| 6-Pak Adapter Plates | | |
| AFR-00357 | 180600135 | ST, 6 Fiber Adapter Plate, Singlemode |
| AFR-00358 | 180600136 | SC Duplex, 6 Fiber Adapter Plate, Singlemode, Blue |

Enclosures

| Order No. | SAP No. | Description |
|---------------------------------|-----------|---|
| AFR-00359 | 180600137 | SC Duplex, 6 Fiber Adapter Plate, Shuttered, Singlemode , Blue |
| AFR-00360 | 180600138 | SC Duplex, 6 Fiber Adapter Plate, Multimode , Beige |
| AFR-00361 | 180600139 | SC Duplex, 6 Fiber Adapter Plate, Shuttered, Multimode , Beige |
| AFR-00362 | 180600140 | SC Duplex, 12 Fiber Adapter Plate, Multimode , Beige |
| AFR-00363 | 180600141 | 6 Fiber Blank Plastic, pack of 4 |
| AFR-00365 | 180600143 | LC Duplex, 12 Fiber Adapter Plate, Singlemode, Blue |
| AFR-00366 | 180600144 | LC Duplex, 12 Fiber Adapter Plate, Multimode, Beige |
| AFR-00368 | 180600146 | SC Duplex, 12 Fiber Adapter Plate, Singlemode, Blue |
| AFR-00369 | 180600147 | LC Quad, 12 Fiber Adapter Plate, Shuttered, Singlemode, Blue |
| AFR-00370 | 180600148 | LC Quad, 12 Fiber Adapter Plate, Shuttered, Multimode, Beige |
| AFR-00371 | 180600149 | FC, 6 Pak Adapter Plate |
| AFR-00372 | 180600150 | SC Duplex, 6 Fiber Adapter Plate, Multimode, OM3, Aqua |
| AFR-00405 | 180600162 | SC/APC, 6 Fiber Angled Adapter Plate, Singlemode |
| AFR-00442 | 180600177 | SC/APC Duplex, 12 Fiber Adapter Plate, Singlemode, Green |
| AFR-00373 | 180600151 | SC Duplex, 6 Fiber Adapter Plate, Shuttered, Multimode, OM3, Aqua |
| AFR-00374 | 180600152 | SC Duplex, 12 Fiber Adapter Plate, Multimode, OM3, Aqua |
| AFR-00375 | 180600153 | LC Quad, 12 Fiber Adapter Plate, Multimode, OM3, Aqua |
| AFR-00376 | 180600154 | LC Duplex, 12 Fiber Adapter Plate, Multimode, OM3, Aqua |
| AFR-00377 | 180600155 | LC Quad, 24 Fiber LC Adapter Plate, Multimode, OM1, Beige |
| AFR-00378 | 180600156 | LC Quad, 24 Fiber LC Adapter Plate, Multimode, OM3, Aqua |
| AFR-00379 | 180600157 | LC Quad, 24 Fiber LC Adapter Plate, Singlemode, Blue |
| AFR-00381 | 180600158 | LC Quad, 12 Fiber Angled Adapter Plate, Shuttered, Multimode, OM3, Aqua |
| AFR-00385 | 180600160 | LC Quad, 12 Fiber Angled Adapter Plate, Multimode, OM3, Aqua |
| AFR-00386 | 180600161 | 6 Fiber Angled Plate SC/APC Connectors |
| AFR-00673-LG | 180600478 | SC Duplex, 6 Fiber Adapter Plate, Multimode, OM5 ,Lime Green |
| AFR-00675-LG | 180600482 | SC Duplex, 6 Fiber Adapter Plate, Shuttered, Multimode, OM5 ,Lime Green |
| AFR-00678-LG | 180600485 | SC Duplex, 12 Fiber Adapter Plate, Multimode, OM5 ,Lime Green |
| AFR-00679-LG | 180600486 | LC Duplex, 12 Fiber Adapter Plate, Multimode, OM5 ,Lime Green |
| AFR-00681-LG | 180600488 | LC Quad, 12 Fiber Adapter Plate, Shuttered, Multimode, OM5, Lime Green |
| AFR-00684-LG | 180600491 | LC Quad, 24 Fiber LC Adapter Plate, Multimode, OM5 ,Lime Green |
| Modular Splice Cassettes | | |
| AFR-00340 | 183190000 | SC Duplex, 6 Fiber Modular Splice Cassette, Singlemode, OS1 |
| AFR-00341 | 183190001 | SC Duplex, 6 Fiber Modular Splice Cassette, Multimode, OM1 |
| AFR-00342 | 183190002 | SC Duplex, 6 Fiber Modular Splice Cassette, Multimode, OM2 |
| AFR-00343 | 183190003 | SC Duplex, 6 Fiber Modular Splice Cassette, Multimode, OM3 |
| AFR-00344 | 183190004 | SC Duplex, 12 Fiber Modular Splice Cassette, Singlemode, OS1 |
| AFR-00345 | 183190005 | SC Duplex, 12 Fiber Modular Splice Cassette, Multimode, OM1 |
| AFR-00346 | 183190006 | SC Duplex, 12 Fiber Modular Splice Cassette, Multimode, OM2 |
| AFR-00347 | 183190007 | SC Duplex, 12 Fiber Modular Splice Cassette, Multimode, OM3 |
| AFR-00348 | 183190008 | LC Duplex, 12 Fiber Modular Splice Cassette, Singlemode, OS1 |
| AFR-00349 | 183190009 | LC Duplex, 12 Fiber Modular Splice Cassette, Multimode, OM1 |
| AFR-00350 | 183190010 | LC Duplex, 12 Fiber Modular Splice Cassette, Multimode, OM2 |
| AFR-00351 | 183190011 | LC Duplex, 12 Fiber Modular Splice Cassette, Multimode, OM3 |
| AFR-00352 | 183190012 | LC Quad, 24 Fiber Modular Splice Cassette, Singlemode, OS1 |
| AFR-00353 | 183190013 | LC Quad, 24 Fiber Modular Splice Cassette, Multimode, OM1 |
| AFR-00354 | 183190014 | LC Quad, 24 Fiber Modular Splice Cassette, Multimode, OM2 |
| AFR-00355 | 183190015 | LC Quad, 24 Fiber Modular Splice Cassette, Multimode, OM3 |
| AFR-00380 | 183190016 | Modular Splice Cassette Housing and Lid |
| AFR-00382 | 183190017 | ST, 6 Fiber Modular Splice Cassette, Singlemode, OS1 |
| AFR-00383 | 183190018 | ST, 6 Fiber Modular Splice Cassette, Multimode, OM1 |
| AFR-00384 | 183190019 | ST, 6 Fiber Modular Splice Cassette, Multimode, OM2 |

Enclosures

| Order No. | SAP No. | Description |
|--------------------------|-----------|--|
| AFR-00406 | 183190020 | SC/APC Duplex, 12 Fiber Modular Splice Cassette, Singlemode, OS1 |
| AFR-00435 | 183190024 | 12P Duplex Modular Splice Cassette without Pigtail/Patch Cord |
| AFR-00436 | 183190025 | DLC, 12 Fiber Modlink Splice Cassette, Singlemode, OS1 with Pigtails |
| AFR-00437 | 183190026 | DLC, 12 Fiber Modlink Splice Cassette, Multimode, OM1 with Pigtails |
| AFR-00438 | 183190027 | DLC, 12 Fiber Modlink Splice Cassette, Multimode, OM3 with Pigtails |
| AFR-00712-LG | 183190091 | DSC, 6 Fiber Modular Splice Cassette, Multimode, OM5 with Pigtails ,Lime Green |
| AFR-00713-LG | 183190092 | DSC, 6 Fiber Modular Splice Cassette, Multimode, OM5 with Pigtails, Low Loss ,Lime Green |
| AFR-00714-LG | 183190093 | DSC, 12 Fiber Modular Splice Cassette, Multimode, OM5 with Pigtails ,Lime Green |
| AFR-00715-LG | 183190094 | DSC, 12 Fiber Modular Splice Cassette, Multimode, OM5 with Pigtails, Low Loss ,Lime Green |
| AFR-00718-LG | 183190097 | DLC, 12 Fiber Modular Splice Cassette, Multimode, OM5 with Pigtails ,Lime Green |
| AFR-00719-LG | 183190098 | DLC, 12 Fiber Modular Splice Cassette, Multimode, OM5 with Pigtails, Low Loss ,Lime Green |
| AFR-00722-LG | 183190101 | QLC, 24 Fiber Modular Splice Cassette, Multimode, OM5 with Pigtails ,Lime Green |
| AFR-00723-LG | 183190102 | QLC, 24 Fiber Modular Splice Cassette, Multimode, OM5 with Pigtails, Low Loss ,Lime Green |
| AFR-00726-LG | 183190105 | DLC, 12 Fiber Modular Splice Cassette, Multimode, OM5 with 1m Pigtails ,Lime Green |
| AFR-00727L-LG | 183190106 | DLC, 12 Fiber Modular Splice Cassette, Multimode, OM5 with 1m Pigtails, Low Loss ,Lime Green |
| AFR-00760 | 183190107 | ST, 6 Fiber Modular Splice Cassette, Multimode, OM5 |
| AFR-00761 | 183190108 | ST, 6 Fiber Modular Splice Cassette, Multimode, OM5, Low Loss |
| ModLink Cassettes | | |
| MLCQLC120M3L | 180370266 | QLC, 12 Fiber Mini ModLink Cassettes, Multimode, OM3, Low Loss |
| MLCQLC120M2 | 180370267 | QLC, 12 Fiber Mini ModLink Cassettes, Multimode, OM2 |
| MLCQLC120M1 | 180370268 | QLC, 12 Fiber Mini ModLink Cassettes, Multimode, OM1 |
| MLCQLC120S1L | 180370269 | QLC, 12 Fiber Mini ModLink Cassettes, Singlemode, OS1, Low Loss |
| MLCSTC120M2 | 180370270 | ST, 12 Fiber Mini ModLink Cassettes, Multimode, OM2 |
| MLCSTC120M1 | 180370271 | ST, 12 Fiber Mini ModLink Cassettes, Multimode, OM1 |
| MLCDSC120S1L | 181810135 | DSC, 12 Fiber Mini ModLink Cassettes, Singlemode, OS1, Low Loss |
| MLCDLC120S1L | 181810137 | DLC, 12 Fiber Mini ModLink Cassettes, Singlemode, OS1, Low Loss |
| MLCDSC120M1 | 181810140 | DSC, 12 Fiber Mini ModLink Cassettes, Multimode, OM1 |
| MLCDLC120M1 | 181810142 | DLC, 12 Fiber Mini ModLink Cassettes, Multimode, OM1 |
| MLCDSC120M2 | 181810145 | DSC, 12 Fiber Mini ModLink Cassettes, Multimode, OM2 |
| MLCDLC120M2 | 181810147 | DLC, 12 Fiber Mini ModLink Cassettes, Multimode, OM2 |
| MLCDSC120M3L | 181810150 | DSC, 12 Fiber Mini ModLink Cassettes, Multimode, OM3 Low Loss |
| MLCDLC120M3L | 181810152 | DLC, 12 Fiber Mini ModLink Cassettes, Multimode, OM3 Low Loss |
| MLCQLC240S1L | 181810161 | QLC, 24 Fiber Mini ModLink Cassettes, Singlemode, OS1, Low Loss |
| MLCQLC240M1 | 181810162 | QLC, 24 Fiber Mini ModLink Cassettes, Multimode, OM1 |
| MLCQLC240M3L | 181810163 | QLC, 24 Fiber Mini ModLink Cassettes, Multimode, OM3, Low Loss |
| MLCQLC240M2 | 181810164 | QLC, 24 Fiber Mini ModLink Cassettes, Multimode, OM2 |
| MLCDSC060M5 | 181810254 | DSC, 6 Fiber Mini ModLink Cassette, Multimode, OM5 ,Lime Green |
| MLCDSC060M5L | 181810282 | DSC, 6 Fiber Mini ModLink Cassette, Multimode, OM5, Low Loss ,Lime Green |
| MLCDSC120M5 | 181810237 | DSC, 12 Fiber ModLink Cassette, Multimode, OM5 ,Lime Green |
| MLCDSC120M5L | 181810238 | DSC, 12 Fiber ModLink Cassette, Multimode, OM5, Low Loss ,Lime Green |
| MLCDLC120M5 | 181810244 | DLC, 12 Fiber ModLink Cassette, Multimode, OM5 ,Lime Green |
| MLCDLC120M5L | 181810245 | DLC, 12 Fiber ModLink Cassette, Multimode, OM5, Low Loss ,Lime Green |
| MLCQLC120M5 | 181810251 | QLC, 12 Fiber ModLink Cassette, Multimode, OM5 ,Lime Green |
| MLCQLC120M5L | 181810252 | QLC, 12 Fiber ModLink Cassette, Multimode, OM5, Low Loss ,Lime Green |
| MLCQLC240M5 | 181810249 | QLC, 24 Fiber ModLink Cassette, Multimode, OM5 ,Lime Green |
| MLCQLC240M5L | 181810250 | QLC, 24 Fiber ModLink Cassette, Multimode, OM5, Low Loss ,Lime Green |
| AFR-00422-04 | 180600170 | 40G/100G Adapter Plate ,Black |
| AFR-00422-0L | 180600171 | 40G/100G Adapter Plate ,Beige |
| AFR-00422-0J | 180600172 | 40G/100G Adapter Plate ,Green |
| AFR-00422-AQ | 180600173 | 40G/100G Adapter Plate ,Aqua |

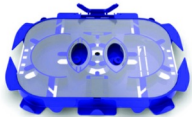
Enclosures

| Order No. | SAP No. | Description |
|---|-----------|--|
| AFR-00422-BL | 180600174 | 40G/100G Adapter Plate ,Blue |
| AFR-00422-08 | 180600175 | 40G/100G Adapter Plate ,Gray |
| DataGate and Synergy Compatible 6 Fiber Plates | | |
| AFR-00440 | 183190029 | 6 Fiber Plate, 3XDG Module, Unequipped |
| AFR-00441 | 183190030 | 6 Fiber Shielded Plate, 3XDG Module, Unequipped |
| Splitter Box | | |
| FSA-00055 | 183670001 | SC, 1x8 Splitter Box, Singlemode, Low Loss |
| FSA-00056 | 183670002 | LC, 1x8 Splitter Box 2Pcs, Singlemode, Low Loss |
| FSA-00057 | 183670003 | SC/APC, 1x8 Splitter Box, Singlemode, Low Loss ,Green |
| FSA-00058 | 183670004 | LC/APC, 1x8 Splitter Box 2Pcs, Singlemode, Low Loss, Green |

Colors: AQ = Aqua, GR = Green, BL = Blue, EV = Erika Violet, LG = Lime Green, 0L = Beige

1U Multi-Function Fiber Enclosure Accessories

| Order No. | SAP No. | Description |
|-----------|---------------|---|
| AFR-00470 | 180600217 | Universal Splice Tray, 24 Fiber with built in Cable Management, 1U Global Enclosure (Self Adhesive, 2 x 12F trays per pack) |
| KFR-00053 | 182680049 | Self Adhesive Cable Management Hub (2 pcs/pack), Black |
| AFR-00475 | 180600222 | Kevlar Retention Post |
| 91.A0860 | Consult Molex | Gland 4-8mm M20 |
| 91.A0870 | Consult Molex | Gland 6-12mm M20 |
| 91.A0880 | Consult Molex | Gland 9-14mm M20 |
| CSP-00030 | Consult Molex | Fiber Adapter Screw (24 pack) |



AFR-00470

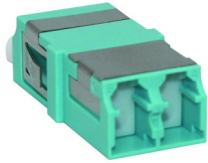


91.A08**



AFR-00475

Adapters

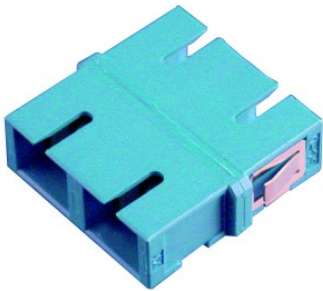


Internal Shuttered LC Adapter

The LC connector is the result of increased demands for smaller easier-to-use fiber connectivity. The LC connector has reduced the space requirements on equipment bays and distribution panels by 50%. Molex LC Adapters feature an internal shutter which provides a barrier against harmful light emissions and dust invasion. The adapter also features precise zirconia ceramic alignment sleeves to accommodate either Singlemode, Multimode or Angle Polish (APC) connectors.

- Two LC ports provide multiple Simplex or Duplex connection options
- Ceramic alignment sleeves accommodate Singlemode and Multimode operation
- RoHS Compliant
- Unique internal shuttered feature protected from harmful light emissions. Available upon application
- Snap or screw-style mounting allows for installation flexibility
- Standard LC Duplex compatible mounting provides a direct drop-in-replacement solution

| Order No. | SAP No. | Description |
|------------|-----------|---|
| 18282-0249 | 182820249 | Duplex LC SM OS1/2, Zirconia Sleeve, Flange Mounted, Internal Shuttered, Blue |
| 18282-0250 | 182820250 | Duplex LC MM OM3/4, Zirconia Sleeve, Flange Mounted, Internal Shuttered, Aqua |
| 18282-0251 | 182820251 | Duplex LC MM OM4, Zirconia Sleeve, Flange Mounted, Internal Shuttered, Erika Violet |
| 18282-0252 | 182820252 | Duplex LC MM OM5, Zirconia Sleeve, Flange Mounted, Internal Shuttered, Lime Green |
| 18282-0253 | 182820253 | Duplex LC SM OS1/2, Zirconia Sleeve, Snap Mounted, Internal Shuttered, Blue |
| 18282-0254 | 182820254 | Duplex LC MM OM3/4, Zirconia Sleeve, Snap Mounted, Internal Shuttered, Aqua |
| 18282-0255 | 182820255 | Duplex LC MM OM4, Zirconia Sleeve, Snap Mounted, Internal Shuttered, Erika Violet |
| 18282-0256 | 182820256 | Duplex LC MM OM5, Zirconia Sleeve, Snap Mounted, Internal Shuttered, Lime Green |



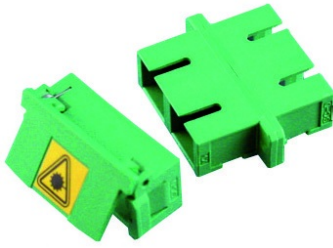
Duplex SC Adapters

Duplex SC adapters feature either a snap or flange mount and are designed to support the TIA/EIA commercial building telecommunication wiring standards.

- NTT-SC and Bellcore 326 compliant connectors
- Meets TIA-568.3-D and IEC 874-109 standards
- Unique shuttered feature protects from harmful light emissions - Available upon application

| Order No. | SAP No. | Description |
|-------------------------|---------------|---|
| 18282-0037 | 182820037 | SC/SC Duplex Singlemode Zirconia Flange Mount Unshuttered - Blue |
| 18282-0103 | 182820103 | SC/SC Duplex Multimode Zirconia Flange Unshuttered - Beige |
| 18282-0104 | 182820104 | SC/SC Duplex Multimode Zirconia Flange Unshuttered - Aqua |
| 18282-0107 | 182820107 | SC/SC Duplex Multimode Zirconia Flange Unshuttered - Erika Violet |
| 18282-0038 | 182820038 | SC/SC Duplex Singlemode Zirconia Snap Mount Unshuttered - Blue |
| 18282-0108 | 182820108 | SC/SC Duplex Multimode Zirconia Snap Mount Unshuttered - Beige |
| 18282-0109 | 182820109 | SC/SC Duplex Multimode Zirconia Snap Mount Unshuttered - Aqua |
| 18282-0111 | 182820111 | SC/SC Duplex Multimode Zirconia Snap Mount Unshuttered - Erika Violet |
| 106166-0500A | Consult Molex | SC/SC Duplex Singlemode Zirconia Flange Mount Shuttered - Blue |
| 106166-0600 | Consult Molex | SC/SC Duplex Singlemode Zirconia Snap Mount Shuttered - Blue |
| 18282-0188 | 182820188 | SC/SC Shuttered Duplex Zirconia Flange Mount Shuttered - Green |
| Adapter Shutters | | |
| 106166-0200 | Consult Molex | SC Duplex Adapter Shutter - Blue |
| 106166-0210 | Consult Molex | SC Duplex Adapter Shutter - Beige |

Adapters

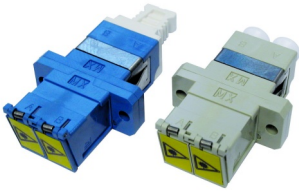


Duplex SC/APC Adapters

Duplex SC/APC adapters feature either a snap or flange mount and are designed for use with Angled Polish Connectors.

- NTT-SC and Bellcore 326 compliant connectors
- Meets TIA 568.3-D and IEC 874-109 standards
- Unique shuttered feature protects from harmful light emissions - Available upon application

| Order No. | SAP No. | Description |
|-------------|---------------|---|
| 106166-0550 | Consult Molex | SC/SC APC Duplex Singlemode Zirconia Flange Mount Shuttered - Green |
| 18282-0039 | 182820039 | SC/SC APC Duplex Singlemode Zirconia Flange Mount Unshuttered - Green |
| 18282-0040 | 182820040 | SC/SC APC Duplex Singlemode Zirconia Snap Mount Unshuttered - Green |



Duplex LC Adapters

The LC adapter is the result of increased demands for smaller easier-to-use fiber connectivity. The LC adapter can reduce the space requirements on equipment bays and distribution panels by up to 50%.

- Unique shuttered feature protects from harmful light emissions - Available upon application

| Order No. | SAP No. | Description |
|--------------|---------------|--|
| 18282-0184 | 182820184 | LC Shuttered Duplex, Flange Mount, Zirconia Alignment Sleeve - Beige |
| 18282-0217 | 182820217 | LC Shuttered Duplex, Flange Mount, Zirconia Alignment Sleeve - Lime Green |
| 18282-0182 | 182820182 | LC Shuttered Duplex, Flange Mount, Zirconia Alignment Sleeve - Blue |
| 18282-0183 | 182820183 | LC Shuttered Duplex, Flange Mount, Zirconia Alignment Sleeve - Green |
| 18282-0186 | 182820186 | LC Shuttered Duplex, Snap Mount, Zirconia Alignment Sleeve - Erika Violet |
| 18282-0112 | 182820112 | LC Unshuttered Duplex, Flange Mount, Zirconia Alignment Sleeve - Beige |
| 18282-0117 | 182820117 | LC Unshuttered Duplex, Snap Mount, Zirconia Alignment Sleeve - Beige |
| 18282-0224 | 182820224 | LC Unshuttered Duplex, Flange Mount, Zirconia Alignment Sleeve - Lime Green |
| 18282-0045 | 182820045 | LC Unshuttered Duplex, Flange Mount, Zirconia Alignment Sleeve - Blue |
| 18282-0046 | 182820046 | LC Unshuttered Duplex, Snap Mount, Zirconia Alignment Sleeve - Blue |
| 18282-0047 | 182820047 | LC Unshuttered Duplex, Flange Mount, Zirconia Alignment Sleeve - Green |
| 18282-0048 | 182820048 | LC Unshuttered Duplex, Snap Mount, Zirconia Alignment Sleeve - Green |
| 18282-0089 | 182820089 | LC Unshuttered Duplex, Snap Mount, Zirconia Alignment Sleeve - Erika Violet |
| 18282-0092 | 182820092 | LC Unshuttered Duplex, Flange Mount, Zirconia Alignment Sleeve - Erika Violet |
| 18282-0113 | 182820113 | LC Unshuttered Duplex, Flange Mount, Zirconia Alignment Sleeve - Aqua |
| 18282-0118 | 182820118 | LC Unshuttered Duplex, Snap Mount, Zirconia Alignment Sleeve - Aqua |
| 18282-0185 | 182820185 | LC Shuttered Duplex, Snap Mount, Multimode, OM3/4, Zirconia Alignment Sleeve- Aqua |
| 106127-1400 | Consult Molex | LC Shuttered Duplex, Singlemode, OS1a Zirconia Ceramic Snap Mount - Blue |
| 106127-0410 | Consult Molex | LC Shuttered Duplex, Multimode OM1/OM2, Zirconia Snap Mount - Beige |
| 106127-1350 | Consult Molex | LC Shuttered Duplex SM OS1a Zirconia Ceramic Flange Mount - Green |
| 106127-1450 | Consult Molex | LC Shuttered Duplex SM OS1a Zirconia Ceramic Snap Mount - Green |
| 106127-1300A | 1061271300A | LC Shuttered Duplex, Singlemode, Zirconia Alignment Sleeve |
| 106127-1310A | 1061271310A | LC Shuttered Duplex, Multimode, Zirconia Alignment Sleeve |
| 106127-1300 | 1061271300 | LC Shuttered Duplex, Singlemode OS1a/ Adapter - Blue |
| 106127-0310 | 1061277030 | LC Shuttered Duplex, Multimode OM1/2 Adapter - Beige |
| 106127-0350 | 1061270350 | LC Shuttered Duplex, Multimode OM3 Adapter - Aqua |
| KFR-00016 | 18600072 | Duplex LC or Simplex SC Adapter Blanking Plug, pack of 20 |

Pigtails and Patch Cords

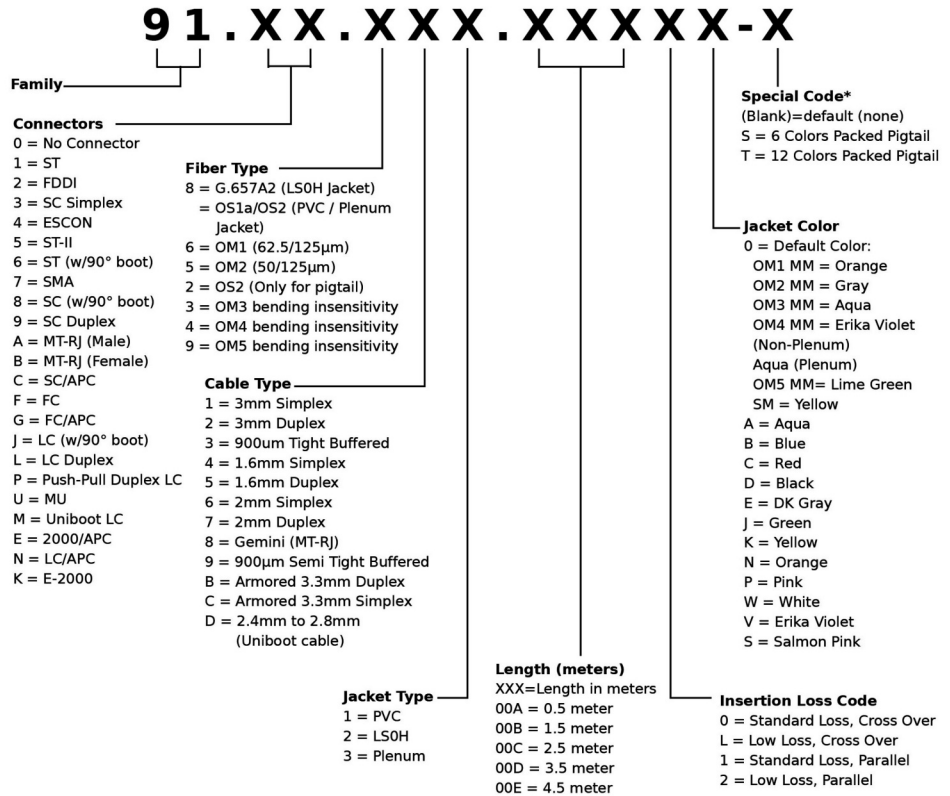


Fiber Optic Patch Cords

Molex Optical Fiber Patch Cords are LS0H jacketed as standard. PVC and Plenum rated cables are available at request. Molex patch cords offer factory-controlled performance in a variety of connector, ISO performance standards and lengths. Molex has taken specific attention to the endface geometry and fiber core alignment to ensure reliability and optimized performance

- 100% Factory Tested - Guaranteed performance
- LS0H Jacket Standard - Reduces toxic / corrosive gasses emitted during combustion. Plenum and PVC also available
- Multiple Formats available - Available in Simplex, Duplex, Singlemode, Multimode and a variety of connector options
- Part number generator, F.O. Configurator – Patch Cords and Pigtails is available on Molex Customer Support Portal: csp.molex.com.

Part No. Matrix - Substitute the correct code number or letter to determine the assembly construction



For Example: To order a 1 meter DLC - DSC OM3 Patch Cord the part number would be 91.9L.372.00100
 Note *: Special code is not necessary when set to blank

| Order No. | SAP No. | Description |
|-------------------|---------------|-------------------------|
| 91.XX.XXX.XXXXX-X | Consult Molex | Fiber Optic Patch Cords |

Pigtails and Patch Cords



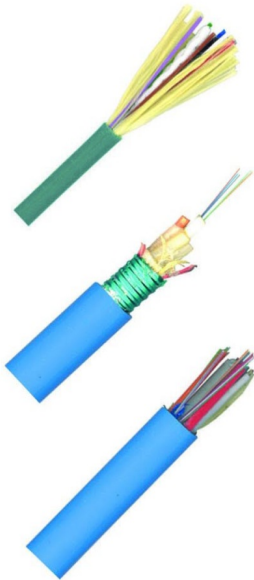
Fiber Pigtails

Molex offers a comprehensive range of fiber optic pigtails for Singlemode and Multimode applications. Fiber Pigtails are available as standard in 1m lengths.

- Ruggedized cable construction
- Insertion loss better than 0.35 dB
- All meet or exceed the standards
- Other lengths available upon request

| Order No. | SAP No. | Description |
|----------------------------|---------------|-----------------------|
| OM2 (50/125) | | |
| 91.10.532.00100 | 180610081 | ST Pigtail, LS0H - 1m |
| 91.30.532.00100 | 180610091 | SC Pigtail, LS0H - 1m |
| 91.L0.532.00100 | 180610092 | LC Pigtail, LS0H - 1m |
| OM3 (50/125) | | |
| 91.10.332.00100 | 180610082 | ST Pigtail, LS0H - 1m |
| 91.30.332.00100 | 180610093 | SC Pigtail, LS0H - 1m |
| 91.L0.332.00100 | 180610094 | LC Pigtail, LS0H - 1m |
| OM4 (50/125) | | |
| 91.10.432.00100 | Consult Molex | ST Pigtail, LS0H - 1m |
| 91.30.432.00100 | Consult Molex | SC Pigtail, LS0H - 1m |
| 91.L0.432.00100 | 180610169 | LC Pigtail, LS0H - 1m |
| OM5 (50/125) | | |
| 91.L0.932.00100 | Consult Molex | LC Pigtail, LS0H - 1m |
| OS2 (9/125) G.657a2 | | |
| 91.10.832.00100 | 180610080 | ST Pigtail, LS0H - 1m |
| 91.30.832.00100 | 180610095 | SC Pigtail, LS0H - 1m |
| 91.L0.832.00100 | 180610096 | LC Pigtail, LS0H - 1m |

Fiber Cable



Please make contact with a local representative from Molex Connected Enterprise Solutions in order to assist you with the correct fiber cable offering based on the various factors.

Molex Connected Enterprise Solutions has an agreement with CBI Electric Telecom Cables to support locally manufactured cables for the Southern and sub-Saharan regions of Africa. We offer a Warranty which is the guaranteed assurance that Molex Connected Enterprise Solutions offers its clients, providing long-term peace of mind in the face of ever-changing IT infrastructure requirements.

CBI Electric Telecom Cables' optical fiber cable, coupled with Molex range of high quality optical fiber components, complement our structured cabling range. These products are eligible for our 25-year System Performance and Application Assurance Warranty when used as part of a qualifying solution.

Design Types:

- HEAVY DUTY DUCT SINGLE MODE 9/125 G657.A1
- HEAVY DUTY DUCT MULTIMODE 50/125 OM2
- HEAVY DUTY DUCT MULTIMODE 50/125 OM3
- HEAVY DUTY DUCT MULTIMODE 50/125 OM4
- ARMOTUBE SINGLE MODE 9/125 G657.A1
- CORRUCATED STEEL TAPE SINGLE MODE 9/125 G657.A1

Order No. Reference

| Order No. | SAP No. | Description | Page |
|-------------------|---------------|---|------|
| 106127-0310 | 1061277030 | LC Shuttered Duplex, Multimode OM1/2 Adapter - Beige | 12 |
| 106127-0350 | 1061270350 | LC Shuttered Duplex, Multimode OM3 Adapter - Aqua | 12 |
| 106127-0410 | Consult Molex | LC Shuttered Duplex, Multimode OM1/OM2, Zirconia Snap Mount - Beige | 12 |
| 106127-1300 | 1061271300 | LC Shuttered Duplex, Singlemode OS1a/ Adapter - Blue | 12 |
| 106127-1300A | 1061271300A | LC Shuttered Duplex, Singlemode, Zirconia Alignment | 12 |
| 106127-1310A | 1061271310A | LC Shuttered Duplex, Multimode, Zirconia Alignment Sleeve | 12 |
| 106127-1350 | Consult Molex | LC Shuttered Duplex SM OS1a Zirconia Ceramic Flange Mount - Green | 12 |
| 106127-1400 | Consult Molex | LC Shuttered Duplex, Singlemode, OS1a Zirconia Ceramic Snap Mount - Blue | 12 |
| 106127-1450 | Consult Molex | LC Shuttered Duplex SM OS1a Zirconia Ceramic Snap Mount - Green | 12 |
| 106166-0200 | Consult Molex | SC Duplex Adapter Shutter - Blue | 11 |
| 106166-0210 | Consult Molex | SC Duplex Adapter Shutter - Beige | 11 |
| 106166-0500A | Consult Molex | SC/SC Duplex Singlemode Zirconia Flange Mount Shuttered - Blue | 11 |
| 106166-0550 | Consult Molex | SC/SC APC Duplex Singlemode Zirconia Flange Mount Shuttered - Green | 12 |
| 106166-0600 | Consult Molex | SC/SC Duplex Singlemode Zirconia Snap Mount Shuttered - Blue | 11 |
| 18282-0037 | 182820037 | SC/SC Duplex Singlemode Zirconia Flange Mount Unshuttered - Blue | 11 |
| 18282-0038 | 182820038 | SC/SC Duplex Singlemode Zirconia Snap Mount Unshuttered - Blue | 11 |
| 18282-0039 | 182820039 | SC/SC APC Duplex Singlemode Zirconia Flange Mount Unshuttered - Green | 12 |
| 18282-0040 | 182820040 | SC/SC APC Duplex Singlemode Zirconia Snap Mount Unshuttered - Green | 12 |
| 18282-0045 | 182820045 | LC Unshuttered Duplex, Flange Mount, Zirconia Alignment Sleeve - Blue | 12 |
| 18282-0046 | 182820046 | LC Unshuttered Duplex, Snap Mount, Zirconia Alignment Sleeve - Blue | 12 |
| 18282-0047 | 182820047 | LC Unshuttered Duplex, Flange Mount, Zirconia Alignment Sleeve - Green | 12 |
| 18282-0048 | 182820048 | LC Unshuttered Duplex, Snap Mount, Zirconia Alignment Sleeve - Green | 12 |
| 18282-0089 | 182820089 | LC Unshuttered Duplex, Snap Mount, Zirconia Alignment Sleeve - Erika Violet | 12 |
| 18282-0092 | 182820092 | LC Unshuttered Duplex, Flange Mount, Zirconia Alignment Sleeve - Erika Violet | 12 |
| 18282-0103 | 182820103 | SC/SC Duplex Multimode Zirconia Flange Unshuttered - Beige | 11 |
| 18282-0104 | 182820104 | SC/SC Duplex Multimode Zirconia Flange Unshuttered - Aqua | 11 |
| 18282-0107 | 182820107 | SC/SC Duplex Multimode Zirconia Flange Unshuttered - Erika Violet | 11 |
| 18282-0108 | 182820108 | SC/SC Duplex Multimode Zirconia Snap Mount Unshuttered - Beige | 11 |
| 18282-0109 | 182820109 | SC/SC Duplex Multimode Zirconia Snap Mount Unshuttered - Aqua | 11 |
| 18282-0111 | 182820111 | SC/SC Duplex Multimode Zirconia Snap Mount Unshuttered - Erika Violet | 11 |
| 18282-0112 | 182820112 | LC Unshuttered Duplex, Flange Mount, Zirconia Alignment Sleeve - Beige | 12 |
| 18282-0113 | 182820113 | LC Unshuttered Duplex, Flange Mount, Zirconia Alignment Sleeve - Aqua | 12 |
| 18282-0117 | 182820117 | LC Unshuttered Duplex, Snap Mount, Zirconia Alignment Sleeve - Beige | 12 |
| 18282-0118 | 182820118 | LC Unshuttered Duplex, Snap Mount, Zirconia Alignment Sleeve - Aqua | 12 |
| 18282-0182 | 182820182 | LC Shuttered Duplex, Flange Mount, Zirconia Alignment Sleeve - Blue | 12 |
| 18282-0183 | 182820183 | LC Shuttered Duplex, Flange Mount, Zirconia Alignment Sleeve - Green | 12 |
| 18282-0184 | 182820184 | LC Shuttered Duplex, Flange Mount, Zirconia Alignment Sleeve - Beige | 12 |
| 18282-0185 | 182820185 | LC Shuttered Duplex, Snap Mount, Multimode, OM3/4, Zirconia Alignment Sleeve- Aqua | 12 |
| 18282-0186 | 182820186 | LC Shuttered Duplex, Snap Mount, Zirconia Alignment Sleeve - Erika Violet | 12 |
| 18282-0188 | 182820188 | SC/SC Shuttered Duplex Zirconia Flange Mount Shuttered - Green | 11 |
| 18282-0217 | 182820217 | LC Shuttered Duplex, Flange Mount, Zirconia Alignment Sleeve - Lime Green | 12 |
| 18282-0224 | 182820224 | LC Unshuttered Duplex, Flange Mount, Zirconia Alignment Sleeve - Lime Green | 12 |
| 18282-0249 | 182820249 | Duplex LC SM OS1/2, Zirconia Sleeve, Flange Mounted, Internal Shuttered, Blue | 11 |
| 18282-0250 | 182820250 | Duplex LC MM OM3/4, Zirconia Sleeve, Flange Mounted, Internal Shuttered, Aqua | 11 |
| 18282-0251 | 182820251 | Duplex LC MM OM4, Zirconia Sleeve, Flange Mounted, Internal Shuttered, Erika Violet | 11 |
| 18282-0252 | 182820252 | Duplex LC MM OM5, Zirconia Sleeve, Flange Mounted, Internal Shuttered, Lime Green | 11 |
| 18282-0253 | 182820253 | Duplex LC SM OS1/2, Zirconia Sleeve, Snap Mounted, Internal Shuttered, Blue | 11 |
| 18282-0254 | 182820254 | Duplex LC MM OM3/4, Zirconia Sleeve, Snap Mounted, Internal Shuttered, Aqua | 11 |
| 18282-0255 | 182820255 | Duplex LC MM OM4, Zirconia Sleeve, Snap Mounted, Internal Shuttered, Erika Violet | 11 |
| 18282-0256 | 182820256 | Duplex LC MM OM5, Zirconia Sleeve, Snap Mounted, Internal Shuttered, Lime Green | 11 |
| 91.10.332.00100 | 180610082 | ST Pigtail, LS0H - 1m | 14 |
| 91.10.432.00100 | Consult Molex | ST Pigtail, LS0H - 1m | 14 |
| 91.10.532.00100 | 180610081 | ST Pigtail, LS0H - 1m | 14 |
| 91.10.832.00100 | 180610080 | ST Pigtail, LS0H - 1m | 14 |
| 91.30.332.00100 | 180610093 | SC Pigtail, LS0H - 1m | 14 |
| 91.30.432.00100 | Consult Molex | SC Pigtail, LS0H - 1m | 14 |
| 91.30.532.00100 | 180610091 | SC Pigtail, LS0H - 1m | 14 |
| 91.30.832.00100 | 180610095 | SC Pigtail, LS0H - 1m | 14 |
| 91.A0860 | Consult Molex | Gland 4-8mm M20 | 10 |
| 91.A0870 | Consult Molex | Gland 6-12mm M20 | 10 |
| 91.A0880 | Consult Molex | Gland 9-14mm M20 | 10 |
| 91.L0.332.00100 | 180610094 | LC Pigtail, LS0H - 1m | 14 |
| 91.L0.432.00100 | 180610169 | LC Pigtail, LS0H - 1m | 14 |
| 91.L0.532.00100 | 180610092 | LC Pigtail, LS0H - 1m | 14 |
| 91.L0.832.00100 | 180610096 | LC Pigtail, LS0H - 1m | 14 |
| 91.L0.932.00100 | Consult Molex | LC Pigtail, LS0H - 1m | 14 |
| 91.XX.XXX.XXXXX-X | Consult Molex | Fiber Optic Patch Cords | 13 |
| AFR-00340 | 183190000 | SC Duplex, 6 Fiber Modular Splice Cassette, Singlemode, OS1 | 4 |
| AFR-00341 | 183190001 | SC Duplex, 6 Fiber Modular Splice Cassette, Multimode, OM1 | 4 |
| AFR-00342 | 183190002 | SC Duplex, 6 Fiber Modular Splice Cassette, Multimode, OM2 | 4 |
| AFR-00343 | 183190003 | SC Duplex, 6 Fiber Modular Splice Cassette, Multimode, OM3 | 4 |
| AFR-00344 | 183190004 | SC Duplex, 12 Fiber Modular Splice Cassette, Singlemode, OS1 | 4 |
| AFR-00345 | 183190005 | SC Duplex, 12 Fiber Modular Splice Cassette, Multimode, OM1 | 4 |
| AFR-00346 | 183190006 | SC Duplex, 12 Fiber Modular Splice Cassette, Multimode, OM2 | 4 |
| AFR-00347 | 183190007 | SC Duplex, 12 Fiber Modular Splice Cassette, Multimode, OM3 | 4 |
| AFR-00348 | 183190008 | LC Duplex, 12 Fiber Modular Splice Cassette, Singlemode, OS1 | 4 |
| AFR-00349 | 183190009 | LC Duplex, 12 Fiber Modular Splice Cassette, Multimode, OM1 | 4 |
| AFR-00350 | 183190010 | LC Duplex, 12 Fiber Modular Splice Cassette, Multimode, OM2 | 4 |
| AFR-00351 | 183190011 | LC Duplex, 12 Fiber Modular Splice Cassette, Multimode, OM3 | 4 |
| AFR-00352 | 183190012 | LC Quad, 24 Fiber Modular Splice Cassette, Singlemode, OS1 | 4 |
| AFR-00353 | 183190013 | LC Quad, 24 Fiber Modular Splice Cassette, Multimode, OM1 | 4 |
| AFR-00354 | 183190014 | LC Quad, 24 Fiber Modular Splice Cassette, Multimode, OM2 | 4 |
| AFR-00355 | 183190015 | LC Quad, 24 Fiber Modular Splice Cassette, Multimode, OM3 | 4 |
| AFR-00357 | 180600135 | ST, 6 Fiber Adapter Plate, Singlemode | 4 |
| AFR-00358 | 180600136 | SC Duplex, 6 Fiber Adapter Plate, Singlemode , Blue | 4 |
| AFR-00359 | 180600137 | SC Duplex, 6 Fiber Adapter Plate, Shuttered, Singlemode , Blue | 4 |
| AFR-00360 | 180600138 | SC Duplex, 6 Fiber Adapter Plate, Multimode , Beige | 4 |
| AFR-00361 | 180600139 | SC Duplex, 6 Fiber Adapter Plate, Shuttered, Multimode , Beige | 4 |
| AFR-00362 | 180600140 | SC Duplex, 12 Fiber Adapter Plate, Multimode , Beige | 4 |

Order No. Reference

| Order No. | SAP No. | Description | Page |
|--------------|-----------|---|------|
| AFR-00363 | 180600141 | 6 Fiber Blank Plastic, pack of 4 | 4 |
| AFR-00365 | 180600143 | LC Duplex, 12 Fiber Adapter Plate, Singlemode, Blue | 4 |
| AFR-00366 | 180600144 | LC Duplex, 12 Fiber Adapter Plate, Multimode, Beige | 4 |
| AFR-00368 | 180600146 | SC Duplex, 12 Fiber Adapter Plate, Singlemode, Blue | 4 |
| AFR-00369 | 180600147 | LC Quad, 12 Fiber Adapter Plate, Shuttered, Singlemode, Blue | 4 |
| AFR-00370 | 180600148 | LC Quad, 12 Fiber Adapter Plate, Shuttered, Multimode, Beige | 4 |
| AFR-00371 | 180600149 | FC, 6 Pak Adapter Plate | 4 |
| AFR-00372 | 180600150 | SC Duplex, 6 Fiber Adapter Plate, Multimode, OM3, Aqua | 4 |
| AFR-00373 | 180600151 | SC Duplex, 6 Fiber Adapter Plate, Shuttered, Multimode, OM3, Aqua | 4 |
| AFR-00374 | 180600152 | SC Duplex, 12 Fiber Adapter Plate, Multimode, OM3, Aqua | 4 |
| AFR-00375 | 180600153 | LC Quad, 12 Fiber Adapter Plate, Multimode, OM3, Aqua | 4 |
| AFR-00376 | 180600154 | LC Duplex, 12 Fiber Adapter Plate, Multimode, OM3, Aqua | 4 |
| AFR-00377 | 180600155 | LC Quad, 24 Fiber LC Adapter Plate, Multimode, OM1, Beige | 4 |
| AFR-00378 | 180600156 | LC Quad, 24 Fiber LC Adapter Plate, Multimode, OM3, Aqua | 4 |
| AFR-00379 | 180600157 | LC Quad, 24 Fiber LC Adapter Plate, Singlemode, Blue | 4 |
| AFR-00380 | 183190016 | Modular Splice Cassette Housing and Lid | 4 |
| AFR-00381 | 180600158 | LC Quad, 12 Fiber Angled Adapter Plate, Shuttered, Multimode, OM3, Aqua | 4 |
| AFR-00382 | 183190017 | ST, 6 Fiber Modular Splice Cassette, Singlemode, OS1 | 4 |
| AFR-00383 | 183190018 | ST, 6 Fiber Modular Splice Cassette, Multimode, OM1 | 4 |
| AFR-00384 | 183190019 | ST, 6 Fiber Modular Splice Cassette, Multimode, OM2 | 4 |
| AFR-00385 | 180600160 | LC Quad, 12 Fiber Angled Adapter Plate, Multimode, OM3, Aqua | 4 |
| AFR-00386 | 180600161 | 6 Fiber Angled Plate SC/APC Connectors | 4 |
| AFR-00405 | 180600162 | SC/APC, 6 Fiber Angled Adapter Plate, Singlemode | 4 |
| AFR-00406 | 183190020 | SC/APC Duplex, 12 Fiber Modular Splice Cassette, Singlemode, OS1 | 4 |
| AFR-00422-04 | 180600170 | 40G/100G Adapter Plate ,Black | 4 |
| AFR-00422-08 | 180600175 | 40G/100G Adapter Plate ,Gray | 4 |
| AFR-00422-0J | 180600172 | 40G/100G Adapter Plate ,Green | 4 |
| AFR-00422-0L | 180600171 | 40G/100G Adapter Plate ,Beige | 4 |
| AFR-00422-AQ | 180600173 | 40G/100G Adapter Plate ,Aqua | 4 |
| AFR-00422-BL | 180600174 | 40G/100G Adapter Plate ,Blue | 4 |
| AFR-00435 | 183190024 | 12P Duplex Modular Splice Cassette without Pigtail/Patch Cord | 4 |
| AFR-00436 | 183190025 | DLC, 12 Fiber Modlink Splice Cassette, Singlemode, OS1 with Pigtailed | 4 |
| AFR-00437 | 183190026 | DLC, 12 Fiber Modlink Splice Cassette, Multimode, OM1 with Pigtailed | 4 |
| AFR-00438 | 183190027 | DLC, 12 Fiber Modlink Splice Cassette, Multimode, OM3 with Pigtailed | 4 |
| AFR-00440 | 183190029 | 6 Fiber Plate, 3XDG Module, Unequipped | 4 |
| AFR-00441 | 183190030 | 6 Fiber Shielded Plate, 3XDG Module, Unequipped | 4 |
| AFR-00442 | 180600177 | SC/APC Duplex, 12 Fiber Adapter Plate, Singlemode, Green | 4 |
| AFR-00467-04 | 180600432 | ST Simplex, 24 Fiber Adapter Plate, Unshuttered, Singlemode/Multimode, Black | 4 |
| AFR-00468-04 | 180600394 | 6 Pak Adapter Front Plate | 4 |
| AFR-00469-04 | 180600395 | Full Length Blanking Plate | 4 |
| AFR-00470 | 180600217 | Universal Splice Tray, 24 Fiber with built in Cable Management, 1U Global Enclosure (Self Adhesive, 2 x 12F trays per pack) | 10 |
| AFR-00475 | 180600222 | Kevlar Retention Post | 10 |
| AFR-00476-04 | 180600375 | SC Simplex, 24 Fiber Adapter Plate, Unloaded, Black | 4 |
| AFR-00477-04 | 180600376 | LC Duplex, 48 Fiber Adapter Plate, Unloaded, Black | 4 |
| AFR-00478-04 | 180600377 | SC Duplex, 48 Fiber Adapter Plate, Unloaded, Black | 4 |
| AFR-00479-04 | 180600378 | LC Quad, 96 Fiber Adapter Plate, Unloaded, Black | 4 |
| AFR-00480-04 | 180600379 | SC Duplex, 24 Fiber Adapter Plate, Unloaded, Black | 4 |
| AFR-00481-04 | 180600380 | LC Quad, 48 Fiber Adapter Plate, Unloaded, Black | 4 |
| AFR-00483-04 | 180600381 | SC Duplex, 36 Fiber Adapter Plate, Unloaded, Black | 4 |
| AFR-00484-04 | 180600382 | FC/ST, 24 Fiber Adapter Plate, Unloaded, Black | 4 |
| AFR-00518-04 | 180600396 | SC Duplex, 12 Fiber Adapter Plate, Unloaded, Black | 4 |
| AFR-00519-04 | 180600397 | LC Quad, 24 Fiber Adapter Plate, Unloaded, Black | 4 |
| AFR-00537-04 | 180600398 | SC Simplex, 6 Fiber Adapter Plate, Unloaded, Black | 4 |
| AFR-00538-04 | 180600399 | LC Duplex, 12 Fiber Adapter Plate, Unloaded, Black | 4 |
| AFR-00539-04 | 180600400 | SC Simplex, 12 Fiber Adapter Plate, Unloaded, Black | 4 |
| AFR-00540-04 | 180600401 | LC Duplex, 24 Fiber Adapter Plate, Unloaded, Black | 4 |
| AFR-00598-BL | 180600392 | SC Simplex, 24 Fiber Adapter Plate, Unshuttered, Singlemode, OS1/2, Blue | 4 |
| AFR-00599-GR | 180600393 | SC/APC Simplex, 24 Fiber Adapter Plate, Unshuttered, Singlemode, OS1/2, Green | 4 |
| AFR-00600-0L | 180600402 | SC Simplex, 24 Fiber Adapter Plate, Unshuttered, Multimode, OM1/OM2, Beige | 4 |
| AFR-00601-AQ | 180600403 | SC Simplex, 24 Fiber Adapter Plate, Unshuttered, Multimode, OM3/OM4, Aqua | 4 |
| AFR-00602-EV | 180600404 | SC Simplex, 24 Fiber Adapter Plate, Unshuttered, Multimode, OM4, Erika Violet | 4 |
| AFR-00603-BL | 180600405 | LC Duplex, 48 Fiber Adapter Plate, Unshuttered, Singlemode, OS1/2, Blue | 4 |
| AFR-00604-GR | 180600406 | LC/APC Duplex, 48 Fiber Adapter Plate, Unshuttered, Singlemode, OS1/2, Green | 4 |
| AFR-00605-0L | 180600407 | LC Duplex, 48 Fiber Adapter Plate, Unshuttered, Multimode, OM1/OM2, Beige | 4 |
| AFR-00606-AQ | 180600408 | LC Duplex, 48 Fiber Adapter Plate, Unshuttered, Multimode, OM3/OM4, Aqua | 4 |
| AFR-00607-EV | 180600409 | LC Duplex, 48 Fiber Adapter Plate, Unshuttered, Multimode, OM4, Erika Violet | 4 |
| AFR-00608-BL | 180600410 | SC Duplex, 48 Fiber Adapter Plate, Unshuttered, Singlemode, OS1/2, Blue | 4 |
| AFR-00609-GR | 180600411 | SC/APC Duplex, 48 Fiber Adapter Plate, Unshuttered, Singlemode, OS1/2, Green | 4 |
| AFR-00610-0L | 180600412 | SC Duplex, 48 Fiber Adapter Plate, Unshuttered, Multimode, OM1/OM2, Beige | 4 |
| AFR-00611-AQ | 180600413 | SC Duplex, 48 Fiber Adapter Plate, Unshuttered, Multimode, OM3/OM4, Aqua | 4 |
| AFR-00612-EV | 180600414 | SC Duplex, 48 Fiber Adapter Plate, Unshuttered, Multimode, OM4, Erika Violet | 4 |
| AFR-00613-BL | 180600415 | LC Quad, 96 Fiber Adapter Plate, Unshuttered, Singlemode, OS1/2, Blue | 4 |
| AFR-00614-GR | 180600416 | LC/APC Quad, 96 Fiber Adapter Plate, Unshuttered, Singlemode, OS1/2, Green | 4 |
| AFR-00615-0L | 180600417 | LC Quad, 96 Fiber Adapter Plate, Unshuttered, Multimode, OM1/OM2, Beige | 4 |
| AFR-00616-AQ | 180600418 | LC Quad, 96 Fiber Adapter Plate, Unshuttered, Multimode, OM3/OM4, Aqua | 4 |
| AFR-00617-EV | 180600419 | LC Quad, 96 Fiber Adapter Plate, Unshuttered, Multimode, OM4, Erika Violet | 4 |
| AFR-00618-BL | 180600420 | SC Duplex, 24 Fiber Adapter Plate, Unshuttered, Singlemode, OS1/2, Blue | 4 |
| AFR-00619-GR | 180600421 | SC/APC Duplex, 24 Fiber Adapter Plate, Unshuttered, Singlemode, OS1/2, Green | 4 |
| AFR-00620-0L | 180600422 | SC Duplex, 24 Fiber Adapter Plate, Unshuttered, Multimode, OM1/OM2, Beige | 4 |
| AFR-00621-AQ | 180600423 | SC Duplex, 24 Fiber Adapter Plate, Unshuttered, Multimode, OM3/OM4, Aqua | 4 |
| AFR-00622-EV | 180600424 | SC Duplex, 24 Fiber Adapter Plate, Unshuttered, Multimode, OM4, Erika Violet | 4 |
| AFR-00623-BL | 180600425 | LC Quad, 48 Fiber Adapter Plate, Unshuttered, Singlemode, OS1/2, Blue | 4 |
| AFR-00624-GR | 180600426 | LC/APC Quad, 48 Fiber Adapter Plate, Unshuttered, Singlemode, OS1/2, Green | 4 |
| AFR-00625-0L | 180600427 | LC Quad, 48 Fiber Adapter Plate, Unshuttered, Multimode, OM1/OM2, Beige | 4 |
| AFR-00627-EV | 180600429 | LC Quad, 48 Fiber Adapter Plate, Unshuttered, Multimode, OM4, Erika Violet | 4 |
| AFR-00628-BL | 180600433 | SC Duplex, 36 Fiber Adapter Plate, Unshuttered, Singlemode, OS1/2, Blue | 4 |
| AFR-00629-GR | 180600434 | SC/APC Duplex, 36 Fiber Adapter Plate, Unshuttered, Singlemode, OS1/2, Green | 4 |
| AFR-00630-0L | 180600435 | SC Duplex, 36 Fiber Adapter Plate, Unshuttered, Multimode, OM1/OM2, Beige | 4 |
| AFR-00631-AQ | 180600436 | SC Duplex, 36 Fiber Adapter Plate, Unshuttered, Multimode, OM3/OM4, Aqua | 4 |

Order No. Reference

| Order No. | SAP No. | Description | Page |
|--------------|-----------|--|------|
| AFR-00632-EV | 180600437 | SC Duplex, 36 Fiber Adapter Plate, Unshuttered, Multimode, OM4, Erika Violet | 4 |
| AFR-00633-BL | 180600438 | SC Simplex, 6 Fiber Adapter Plate, Unshuttered, Singlemode, OS1/2, Blue | 4 |
| AFR-00634-GR | 180600439 | SC/APC Simplex, 6 Fiber Adapter Plate, Unshuttered, Singlemode, OS1/2, Green | 4 |
| AFR-00635-OL | 180600440 | SC Simplex, 6 Fiber Adapter Plate, Unshuttered, Multimode, OM1/OM2, Beige | 4 |
| AFR-00636-AQ | 180600441 | SC Simplex, 6 Fiber Adapter Plate, Unshuttered, Multimode, OM3/OM4, Aqua | 4 |
| AFR-00637-EV | 180600442 | SC Simplex, 6 Fiber Adapter Plate, Unshuttered, Multimode, OM4, Erika Violet | 4 |
| AFR-00638-BL | 180600443 | LC Duplex, 12 Fiber Adapter Plate, Unshuttered, Singlemode, OS1/2, Blue | 4 |
| AFR-00639-GR | 180600444 | LC/APC Duplex, 12 Fiber Adapter Plate, Unshuttered, Singlemode, OS1/2, Green | 4 |
| AFR-00640-OL | 180600445 | LC Duplex, 12 Fiber Adapter Plate, Unshuttered, Multimode, OM1/OM2, Beige | 4 |
| AFR-00641-AQ | 180600446 | LC Duplex, 12 Fiber Adapter Plate, Unshuttered, Multimode, OM3/OM4, Aqua | 4 |
| AFR-00642-EV | 180600447 | LC Duplex, 12 Fiber Adapter Plate, Unshuttered, Multimode, OM4, Erika Violet | 4 |
| AFR-00643-BL | 180600448 | SC Duplex, 12 Fiber Adapter Plate, Unshuttered, Singlemode, OS1/2, Blue | 4 |
| AFR-00644-GR | 180600449 | SC/APC Duplex, 12 Fiber Adapter Plate, Unshuttered, Singlemode, OS1/2, Green | 4 |
| AFR-00645-OL | 180600450 | SC Duplex, 12 Fiber Adapter Plate, Unshuttered, Multimode, OM1/OM2, Beige | 4 |
| AFR-00646-AQ | 180600451 | SC Duplex, 12 Fiber Adapter Plate, Unshuttered, Multimode, OM3/OM4, Aqua | 4 |
| AFR-00647-EV | 180600452 | SC Duplex, 12 Fiber Adapter Plate, Unshuttered, Multimode, OM4, Erika Violet | 4 |
| AFR-00648-BL | 180600453 | LC Quad, 24 Fiber Adapter Plate, Unshuttered, Singlemode, OS1/2, Blue | 4 |
| AFR-00649-GR | 180600454 | LC/APC Quad, 24 Fiber Adapter Plate, Unshuttered, Singlemode, OS1/2, Green | 4 |
| AFR-00650-OL | 180600455 | LC Quad, 24 Fiber Adapter Plate, Unshuttered, Multimode, OM1/OM2, Beige | 4 |
| AFR-00651-AQ | 180600456 | LC Quad, 24 Fiber Adapter Plate, Unshuttered, Multimode, OM3/OM4, Aqua | 4 |
| AFR-00652-EV | 180600457 | LC Quad, 24 Fiber Adapter Plate, Unshuttered, Multimode, OM4, Erika Violet | 4 |
| AFR-00659-LG | 180600474 | LC Quad, 48 Fiber Adapter Plate, Shuttered, Multimode, OM5, Lime Green | 4 |
| AFR-00673-LG | 180600478 | SC Duplex, 6 Fiber Adapter Plate, Multimode, OM5 ,Lime Green | 4 |
| AFR-00675-LG | 180600482 | SC Duplex, 6 Fiber Adapter Plate, Shuttered, Multimode, OM5 ,Lime Green | 4 |
| AFR-00678-LG | 180600485 | SC Duplex, 12 Fiber Adapter Plate, Multimode, OM5 ,Lime Green | 4 |
| AFR-00679-LG | 180600486 | LC Duplex, 12 Fiber Adapter Plate, Multimode, OM5 ,Lime Green | 4 |
| AFR-00681-LG | 180600488 | LC Quad, 12 Fiber Adapter Plate, Shuttered, Multimode, OM5, Lime Green | 4 |
| AFR-00684-LG | 180600491 | LC Quad, 24 Fiber LC Adapter Plate, Multimode, OM5 ,Lime Green | 4 |
| AFR-00689-04 | 180600526 | SC Simplex/LC Duplex, 1 Port Adapter Plate, Unloaded | 4 |
| AFR-00689-LG | 180600459 | LC Duplex, 48 Fiber Adapter Plate, Unshuttered, Multimode, OM5, Lime Green | 4 |
| AFR-00690-04 | 180600527 | MTP/MPO, 1 Port Adapter Plate, Unloaded | 4 |
| AFR-00690-LG | 180600460 | SC Duplex 48 Fiber Adapter Plate, Unshuttered, Multimode, OM5, Lime Green | 4 |
| AFR-00691-LG | 180600461 | LC Quad, 96 Fiber Adapter Plate, Unshuttered, Multimode, OM5, Lime Green | 4 |
| AFR-00692-LG | 180600462 | SC Duplex 24 Fiber Adapter Plate, Unshuttered, Multimode, OM5, Lime Green | 4 |
| AFR-00693-LG | 180600463 | LC Quad, 48 Fiber Adapter Plate, Unshuttered, Multimode, OM5, Lime Green | 4 |
| AFR-00694-LG | 180600464 | SC Duplex, 36 Fiber Adapter Plate, Unshuttered, Multimode, OM5, Lime Green | 4 |
| AFR-00695-LG | 180600465 | SC Simplex, 6 Fiber Adapter Plate, Unshuttered, Multimode, OM5, Lime Green | 4 |
| AFR-00696-LG | 180600466 | LC Duplex, 12 Fiber Adapter Plate, Unshuttered, Multimode, OM5, Lime Green | 4 |
| AFR-00697-LG | 180600467 | SC Duplex, 12 Fiber Adapter Plate, Unshuttered, Multimode, OM5, Lime Green | 4 |
| AFR-00698-LG | 180600468 | LC Quad, 24 Fiber Adapter Plate, Unshuttered, Multimode, OM5, Lime Green | 4 |
| AFR-00699-LG | 180600469 | SC Simplex, 6 Fiber Adapter Plate, Shuttered, Multimode, OM5, Lime Green | 4 |
| AFR-00700-LG | 180600470 | LC Duplex, 12 Fiber Adapter Plate, Shuttered, Multimode, OM5, Lime Green | 4 |
| AFR-00701-LG | 180600471 | SC Duplex, 12 Fiber Adapter Plate, Shuttered, Multimode, OM5, Lime Green | 4 |
| AFR-00702-LG | 180600472 | LC Duplex, 24 Fiber Adapter Plate, Shuttered, Multimode, OM5, Lime Green | 4 |
| AFR-00703-LG | 180600473 | SC Duplex, 24 Fiber Adapter Plate, Shuttered, Multimode, OM5, Lime Green | 4 |
| AFR-00712-LG | 183190091 | DSC, 6 Fiber Modular Splice Cassette, Multimode, OM5 with Pigtails ,Lime Green | 4 |
| AFR-00713-LG | 183190092 | DSC, 6 Fiber Modular Splice Cassette, Multimode, OM5 with Pigtails, Low Loss ,Lime Green | 4 |
| AFR-00714-LG | 183190093 | DSC, 12 Fiber Modular Splice Cassette, Multimode, OM5 with Pigtails ,Lime Green | 4 |
| AFR-00715-LG | 183190094 | DSC, 12 Fiber Modular Splice Cassette, Multimode, OM5 with Pigtails, Low Loss ,Lime Green | 4 |
| AFR-00718-LG | 183190097 | DLC, 12 Fiber Modular Splice Cassette, Multimode, OM5 with Pigtails ,Lime Green | 4 |
| AFR-00719-LG | 183190098 | DLC, 12 Fiber Modular Splice Cassette, Multimode, OM5 with Pigtails, Low Loss ,Lime Green | 4 |
| AFR-00722-LG | 183190101 | QLC, 24 Fiber Modular Splice Cassette, Multimode, OM5 with Pigtails ,Lime Green | 4 |
| AFR-00723-LG | 183190102 | QLC, 24 Fiber Modular Splice Cassette, Multimode, OM5 with Pigtails, Low Loss ,Lime Green | 4 |
| AFR-00726-LG | 183190105 | DLC, 12 Fiber Modular Splice Cassette, Multimode, OM5 with 1m Pigtails ,Lime Green | 4 |
| AFR-00727-LG | 183190106 | DLC, 12 Fiber Modular Splice Cassette, Multimode, OM5 with 1m Pigtails, Low Loss ,Lime Green | 4 |
| AFR-00728-BL | 180600496 | SC Simplex, 6 Fiber Adapter Plate, Shuttered, Singlemode, OS1/2, Blue | 4 |
| AFR-00729-GR | 180600497 | SC/APC Simplex, 6 Fiber Adapter Plate, Shuttered, Singlemode, OS1/2, Green | 4 |
| AFR-00730-OL | 180600498 | SC Simplex, 6 Fiber Adapter Plate, Shuttered, Multimode, OM1/OM2, Beige | 4 |
| AFR-00731-AQ | 180600499 | SC Simplex, 6 Fiber Adapter Plate, Shuttered, Multimode, OM3/OM4, Aqua | 4 |
| AFR-00732-EV | 180600500 | SC Simplex, 6 Fiber Adapter Plate, Shuttered, Multimode, OM4, Erika Violet | 4 |
| AFR-00733-BL | 180600501 | LC Duplex, 12 Fiber Adapter Plate, Shuttered, Singlemode, OS1/2, Blue | 4 |
| AFR-00734-GR | 180600502 | LC/APC Duplex, 12 Fiber Adapter Plate, Shuttered, Singlemode, OS1/2, Green | 4 |
| AFR-00735-OL | 180600503 | LC Duplex, 12 Fiber Adapter Plate, Shuttered, Multimode, OM1/OM2, Beige | 4 |
| AFR-00736-AQ | 180600504 | LC Duplex, 12 Fiber Adapter Plate, Shuttered, Multimode, OM3/OM4, Aqua | 4 |
| AFR-00737-EV | 180600505 | LC Duplex, 12 Fiber Adapter Plate, Shuttered, Multimode, OM4, Erika Violet | 4 |
| AFR-00738-BL | 180600506 | SC Simplex, 12 Fiber Adapter Plate, Shuttered, Singlemode, OS1/2, Blue | 4 |
| AFR-00739-GR | 180600507 | SC/APC Simplex, 12 Fiber Adapter Plate, Shuttered, Singlemode, OS1/2, Green | 4 |
| AFR-00740-OL | 180600508 | SC Simplex, 12 Fiber Adapter Plate, Shuttered, Multimode, OM1/OM2, Beige | 4 |
| AFR-00741-AQ | 180600509 | SC Simplex, 12 Fiber Adapter Plate, Shuttered, Multimode, OM3/OM4, Aqua | 4 |
| AFR-00742-EV | 180600510 | SC Simplex, 12 Fiber Adapter Plate, Shuttered, Multimode, OM4, Erika Violet | 4 |
| AFR-00743-BL | 180600511 | LC Duplex, 24 Fiber Adapter Plate, Shuttered, Singlemode, OS1/2, Blue | 4 |
| AFR-00744-GR | 180600512 | LC/APC Duplex, 24 Fiber Adapter Plate, Shuttered, Singlemode, OS1/2, Green | 4 |
| AFR-00745-OL | 180600513 | LC Duplex, 24 Fiber Adapter Plate, Shuttered, Multimode, OM1/OM2, Beige | 4 |
| AFR-00746-AQ | 180600514 | LC Duplex, 24 Fiber Adapter Plate, Shuttered, Multimode, OM3/OM4, Aqua | 4 |
| AFR-00747-EV | 180600515 | LC Duplex, 24 Fiber Adapter Plate, Shuttered, Multimode, OM4, Erika Violet | 4 |
| AFR-00748-BL | 180600516 | SC Duplex, 24 Fiber Adapter Plate, Shuttered, Singlemode, OS1/2, Blue | 4 |
| AFR-00749-GR | 180600517 | SC/APC Duplex, 24 Fiber Adapter Plate, Shuttered, Singlemode, OS1/2, Green | 4 |
| AFR-00750-OL | 180600518 | SC Duplex, 24 Fiber Adapter Plate, Shuttered, Multimode, OM1/OM2, Beige | 4 |
| AFR-00751-AQ | 180600519 | SC Duplex, 24 Fiber Adapter Plate, Shuttered, Multimode, OM3/OM4, Aqua | 4 |
| AFR-00752-EV | 180600520 | SC Duplex, 24 Fiber Adapter Plate, Shuttered, Multimode, OM4, Erika Violet | 4 |
| AFR-00753-BL | 180600521 | LC Quad, 48 Fiber Adapter Plate, Shuttered, Singlemode, OS1/2, Blue | 4 |
| AFR-00754-GR | 180600522 | LC/APC Quad, 48 Fiber Adapter Plate, Shuttered, Singlemode, OS1/2, Green | 4 |
| AFR-00755-OL | 180600523 | LC Quad, 48 Fiber Adapter Plate, Shuttered, Multimode, OM1/OM2, Beige | 4 |
| AFR-00756-AQ | 180600524 | LC Quad, 48 Fiber Adapter Plate, Shuttered, Multimode, OM3/OM4, Aqua | 4 |
| AFR-00757-EV | 180600525 | LC Quad, 48 Fiber Adapter Plate, Shuttered, Multimode, OM4, Erika Violet | 4 |
| AFR-00760 | 183190107 | ST, 6 Fiber Modular Splice Cassette, Multimode, OM5 | 4 |
| AFR-00761 | 183190108 | ST, 6 Fiber Modular Splice Cassette, Multimode, OM5, Low Loss | 4 |
| AFR-00762-BL | 180600533 | LC, 4x64 Fiber Adapter Plate, Loaded, Shuttered , Blue | 4 |
| AFR-00762-GR | 180600557 | LC, 4x64 Fiber Adapter Plate, Loaded, Shuttered , Green | 4 |

Order No. Reference

| Order No. | SAP No. | Description | Page |
|--------------|---------------|---|------|
| AFR-00763-BL | 180600534 | LC, 2x64 Fiber Adapter Plate, Loaded, Shuttered , Blue | 4 |
| AFR-00763-GR | 180600558 | LC, 2x64 Fiber Adapter Plate, Loaded, Shuttered , Green | 4 |
| AFR-00764-BL | 180600535 | SC, 2x32 Fiber Adapter Plate, Loaded, Shuttered , Blue | 4 |
| AFR-00764-GR | 180600559 | SC, 2x32 Fiber Adapter Plate, Loaded, Shuttered , Green | 4 |
| AFR-00765-BL | 180600536 | SC, 1x32 Fiber Adapter Plate, Loaded, Shuttered , Blue | 4 |
| AFR-00765-GR | 180600560 | SC, 1x32 Fiber Adapter Plate, Loaded, Shuttered , Green | 4 |
| AFR-00766 | 180600537 | LC, 4x64 Fiber Adapter Plate, Unloaded | 4 |
| AFR-00769 | 180600540 | SC, 2x32 Fiber Adapter Plate, Unloaded | 4 |
| AFR-00786-BL | 180600561 | LC, 4x32 Fiber Adapter Plate, Loaded, Shuttered , Blue | 4 |
| AFR-00786-GR | 180600567 | LC, 4x32 Fiber Adapter Plate, Loaded, Shuttered , Green | 4 |
| AFR-00787-BL | 180600562 | LC, 4x16 Fiber Adapter Plate, Loaded, Shuttered , Blue | 4 |
| AFR-00787-GR | 180600568 | LC, 4x16 Fiber Adapter Plate, Loaded, Shuttered , Green | 4 |
| AFR-00790-BL | 180600565 | LC, 1x32 Fiber Adapter Plate, Loaded, Shuttered , Blue | 4 |
| AFR-00790-GR | 180600571 | LC, 1x32 Fiber Adapter Plate, Loaded, Shuttered , Green | 4 |
| AFR-00791-BL | 180600566 | LC, 1x16 Fiber Adapter Plate, Loaded, Shuttered , Blue | 4 |
| AFR-00791-GR | 180600572 | LC, 1x16 Fiber Adapter Plate, Loaded, Shuttered , Green | 4 |
| AFR-00798-BL | 180600573 | SC, 2x16 Fiber Adapter Plate, Loaded, Shuttered , Blue | 4 |
| AFR-00798-GR | 180600577 | SC, 2x16 Fiber Adapter Plate, Loaded, Shuttered , Green | 4 |
| AFR-00799-BL | 180600574 | SC, 2x8 Fiber Adapter Plate, Loaded, Shuttered , Blue | 4 |
| AFR-00799-GR | 180600578 | SC, 2x8 Fiber Adapter Plate, Loaded, Shuttered , Green | 4 |
| AFR-00800-BL | 180600575 | SC, 1x16 Fiber Adapter Plate, Loaded, Shuttered , Blue | 4 |
| AFR-00800-GR | 180600579 | SC, 1x16 Fiber Adapter Plate, Loaded, Shuttered , Green | 4 |
| AFR-00801-BL | 180600576 | SC, 1x8 Fiber Adapter Plate, Loaded, Shuttered , Blue | 4 |
| AFR-00801-GR | 180600580 | SC, 1x8 Fiber Adapter Plate, Loaded, Shuttered , Green | 4 |
| AFR-00802 | 180810066 | Jack Plate 19 | 4 |
| AFR-00809-BL | 180600621 | LC Duplex, 48 Fiber Adapter Plate,Internal Shuttered, Singlemode, OS1/OS2, Blue | 4 |
| AFR-00810-AQ | 180600622 | LC Duplex, 48 Fiber Adapter Plate,Internal Shuttered, Multimode, OM3/OM4, Aqua | 4 |
| AFR-00811-EV | 180600623 | LC Duplex, 48 Fiber Adapter Plate,Internal Shuttered, Multimode, OM4, Erika Violet | 4 |
| AFR-00812-LG | 180600624 | LC Duplex, 48 Fiber Adapter Plate,Internal Shuttered, Multimode, OM5, Lime Green | 4 |
| CMA-00111 | 181050048 | Front Cable Manager for 1U Multi-Function Fiber Enclosure Gen II | 4 |
| CSP-00030 | Consult Molex | Fiber Adapter Screw (24 pack) | 10 |
| FSA-00055 | 183670001 | SC, 1x8 Splitter Box, Singlemode, Low Loss | 4 |
| FSA-00056 | 183670002 | LC, 1x8 Splitter Box 2Pcs, Singlemode, Low Loss | 4 |
| FSA-00057 | 183670003 | SC/APC, 1x8 Splitter Box, Singlemode, Low Loss ,Green | 4 |
| FSA-00058 | 183670004 | LC/APC, 1x8 Splitter Box 2Pcs, Singlemode, Low Loss, Green | 4 |
| HFR-10144 | 180660136 | HD Fiber Enclosure 1U 144F, Black | 3 |
| HFR-14401 | 181810303 | HD Cassette 24F 2XMTP(M)-LCD LL OS2, Black | 3 |
| HFR-14402 | 181810304 | HD Cassette 24F 2XMTP(M)-LCD LL OM3, Black | 3 |
| HFR-14403 | 181810305 | HD Cassette 24F 2XMTP(M)-LCD LL OM4, Black | 3 |
| HFR-14404 | 181810306 | HD Cassette 24F 2XMTP(M)-LCD LL OM5, Black | 3 |
| HFR-14405 | 181810307 | HD Cassette 24F 3XMTP(M)-LCD LL OS2, Black | 3 |
| HFR-14406 | 181810308 | HD Cassette 24F 3XMTP(M)-LCD LL OM3, Black | 3 |
| HFR-14407 | 181810309 | HD Cassette 24F 3XMTP(M)-LCD LL OM4, Black | 3 |
| HFR-14408 | 181810310 | HD Cassette 24F 3XMTP(M)-LCD LL OM5, Black | 3 |
| HFR-14409 | 181810311 | HD Cassette 24F 1XMTP(M)-LCD LL OS2, Black | 3 |
| HFR-14410 | 181810312 | HD Cassette 24F 1XMTP(M)-LCD LL OM3, Black | 3 |
| HFR-14411 | 181810313 | HD Cassette 24F 1XMTP(M)-LCD LL OM4, Black | 3 |
| HFR-14412 | 181810314 | HD Cassette 24F 1XMTP(M)-LCD LL OM5, Black | 3 |
| HFR-14413 | 181810315 | HD Cassette 24F LCD Pigtail LL OS2, Black | 3 |
| HFR-14414 | 181170023 | RJ45-RJ12 DataGate Conversion Cap (bag of 20) - Green | 3 |
| HFR-14415 | 181170024 | RJ45-RJ12 DataGate Conversion Cap (bag of 20) - Red | 3 |
| HFR-14416 | 181170025 | RJ45-RJ12 DataGate Conversion Cap (bag of 20) - Yellow | 3 |
| HFR-14417 | 183020021 | F/FTP cable PowerCat6A (10G), 4 pairs, LSZH, class Dca s1a, d1, a1 acc. 13501-6, 500m, Purple | 3 |
| HFR-14418 | 183530004 | S/FTP cable cat. 7 600MHz, 4 pairs, 23AWG, LSZH, class Eca 13501-6, 1000m, Purple | 3 |
| HFR-14419 | 181750042 | PowerCat 6 F/UTP cable, 4 pairs, outdoor UV/PE, Fca class acc. 13501-6, 500m, Black | 3 |
| HFR-14420 | 18181031 | HD Cassette 24F LCD Pigtail LL OM3, Black | 3 |
| HFR-14421 | 181810317 | HD Cassette 24F LCD Pigtail LL OM4, Black | 3 |
| HFR-14422 | 181810318 | HD Cassette 24F LCD Pigtail LL OM5, Black | 3 |
| KFR-00016 | 18600072 | Duplex LC or Simplex SC Adapter Blanking Plug, pack of 20 | 12 |
| KFR-00053 | 182680049 | Self Adhesive Cable Management Hub (2 pcs/pack), Black | 10 |
| MLCDLC120M1 | 181810142 | DLC, 12 Fiber Mini ModLink Cassettes, Multimode, OM1 | 4 |
| MLCDLC120M2 | 181810147 | DLC, 12 Fiber Mini ModLink Cassettes, Multimode, OM2 | 4 |
| MLCDLC120M3L | 181810152 | DLC, 12 Fiber Mini ModLink Cassettes, Multimode, OM3 Low Loss | 4 |
| MLCDLC120M5 | 181810244 | DLC, 12 Fiber ModLink Cassette, Multimode, OM5 ,Lime Green | 4 |
| MLCDLC120M5L | 181810245 | DLC, 12 Fiber ModLink Cassette, Multimode, OM5, Low Loss ,Lime Green | 4 |
| MLCDLC120S1L | 181810137 | DLC, 12 Fiber Mini ModLink Cassettes, Singlemode, OS1, Low Loss | 4 |
| MLCDSC060M5 | 181810254 | DSC, 6 Fiber Mini ModLink Cassette, Multimode, OM5 ,Lime Green | 4 |
| MLCDSC060M5L | 181810282 | DSC, 6 Fiber Mini ModLink Cassette, Multimode, OM5, Low Loss ,Lime Green | 4 |
| MLCDSC120M1 | 181810140 | DSC, 12 Fiber Mini ModLink Cassettes, Multimode, OM1 | 4 |
| MLCDSC120M2 | 181810145 | DSC, 12 Fiber Mini ModLink Cassettes, Multimode, OM2 | 4 |
| MLCDSC120M3L | 181810150 | DSC, 12 Fiber Mini ModLink Cassettes, Multimode, OM3 Low Loss | 4 |
| MLCDSC120M5 | 181810237 | DSC, 12 Fiber ModLink Cassette, Multimode, OM5 ,Lime Green | 4 |
| MLCDSC120M5L | 181810238 | DSC, 12 Fiber ModLink Cassette, Multimode, OM5, Low Loss ,Lime Green | 4 |
| MLCDSC120S1L | 181810135 | DSC, 12 Fiber Mini ModLink Cassettes, Singlemode, OS1, Low Loss | 4 |
| MLCQLC120M1 | 180370268 | QLC, 12 Fiber Mini ModLink Cassettes, Multimode, OM1 | 4 |
| MLCQLC120M2 | 180370267 | QLC, 12 Fiber Mini ModLink Cassettes, Multimode, OM2 | 4 |
| MLCQLC120M3L | 180370266 | QLC, 12 Fiber Mini ModLink Cassettes, Multimode, OM3, Low Loss | 4 |
| MLCQLC120S1L | 180370269 | QLC, 12 Fiber Mini ModLink Cassettes, Singlemode, OS1, Low Loss | 4 |
| MLCQLC120M5 | 181810251 | QLC, 12 Fiber ModLink Cassette, Multimode, OM5 ,Lime Green | 4 |
| MLCQLC120M5L | 181810252 | QLC, 12 Fiber ModLink Cassette, Multimode, OM5, Low Loss ,Lime Green | 4 |
| MLCQLC240M1 | 181810162 | QLC, 24 Fiber Mini ModLink Cassettes, Multimode, OM1 | 4 |
| MLCQLC240M2 | 181810164 | QLC, 24 Fiber Mini ModLink Cassettes, Multimode, OM2 | 4 |
| MLCQLC240M3L | 181810163 | QLC, 24 Fiber Mini ModLink Cassettes, Multimode, OM3, Low Loss | 4 |
| MLCQLC240M5 | 181810249 | QLC, 24 Fiber ModLink Cassette, Multimode, OM5 ,Lime Green | 4 |
| MLCQLC240M5L | 181810250 | QLC, 24 Fiber ModLink Cassette, Multimode, OM5, Low Loss ,Lime Green | 4 |
| MLCQLC240S1L | 181810161 | QLC, 24 Fiber Mini ModLink Cassettes, Singlemode, OS1, Low Loss | 4 |
| MLCSTC120M1 | 180370271 | ST, 12 Fiber Mini ModLink Cassettes, Multimode, OM1 | 4 |
| MLCSTC120M2 | 180370270 | ST, 12 Fiber Mini ModLink Cassettes, Multimode, OM2 | 4 |
| RFR-00311-BK | 180370287 | 1U Multi-Function Fiber Enclosure Gen II | 4 |

Order No. Reference

| Order No. | SAP No. | Description | Page |
|--------------|---------------|---|------|
| RFR-00312-BK | 180370288 | Locking Front Assembly Kit for 1U Multi-Function Fiber Enclosure Gen II | 4 |
| RFR-00326 | 180660097 | Utility Fiber Enclosure, 1U DLC, 48F - Unloaded | 4 |
| WFR-00010-02 | 180970009 | 6 Port ST 601 Enclosure, Multimode | 3 |
| WFR-00018 | 180090008 | WM12 - Graphite Gray | 4 |
| WFR-00024-02 | Consult Molex | 8 Port ST 601 Enclosure, Unloaded | 3 |
| WFR-00025-02 | 180970013 | 8 Port ST 601 Enclosure, Multimode | 3 |
| WFR-00027-02 | 180970015 | 8 Port Duplex SC 601 Enclosure, Unloaded | 3 |
| WFR-00028-02 | 180970016 | 8 Port Duplex SC 601 Enclosure, Multimode | 3 |
| WFR-00029-02 | 180970017 | 8 Port Duplex SC 601 Enclosure, Singlemode | 3 |
| WFR-00033-02 | 180970078 | 12 Port LC 601 Enclosure, Unloaded | 3 |
| WFR-00034-02 | 180970079 | 12 Port LC 601 Enclosure, Multimode | 3 |
| WFR-00035-02 | 180970080 | 12 Port LC 601 Enclosure, Singlemode | 3 |



Customer Support Portal

Connecting Users

Warranty and testing requirements

Only Molex Certified Installers can register a deployment for the Molex 25-Year System Performance and Application Assurance Warranty.

Registration and Training is available online:

<https://csp.molex.com>

- Entire channel of components to consist of the Molex Connected Enterprise solution end-end.
- Permanent Link to be tested with an approved, calibrated certification analyser.
- Submit correct information as required by Molex to the Customer Support Portal for approval.
- Online support: **ces.support@molex.com**

The Customer Support Portal is your go-to hub for all the tools and technical information you need.

- Training Courses
- Consultant Tools
- Consultant Proposal Generator
- Cable Fill Rate Estimator
- BoM Estimator
- Multi-Site Overview Survey tool
- Warranty Checklist
- Molex PoE Calculator
- Authorised Molex Distributors
- Technical Bulletins
- System Performance warranty
- Testing Procedures

Visit: **<https://csp.molex.com>**

Melbourne, Australia
Tel: +61 3 9971 7111

Shanghai, China
Tel: +86 215 048 0889

Bangalore, India
Tel: +91 80 6683 8412

Tczew, Poland
Tel: +48 58 530 62 00

Johannesburg, South Africa
Tel: +27 108 232 208

Portsmouth, UK
Tel: +44 2392 205800

Dubai, UAE
Tel: +971 564036976

Lisle, IL USA
Tel: +1 866 733 6659

www.molexcex.com

molex

Molex is a registered trademark of Molex, LLC in the United States of America and may be registered in other countries; all other trademarks listed herein belong to their respective owners. All information is correct at the time of publication, specifications are subject to change.

UK/0k/SK

©2022 Molex