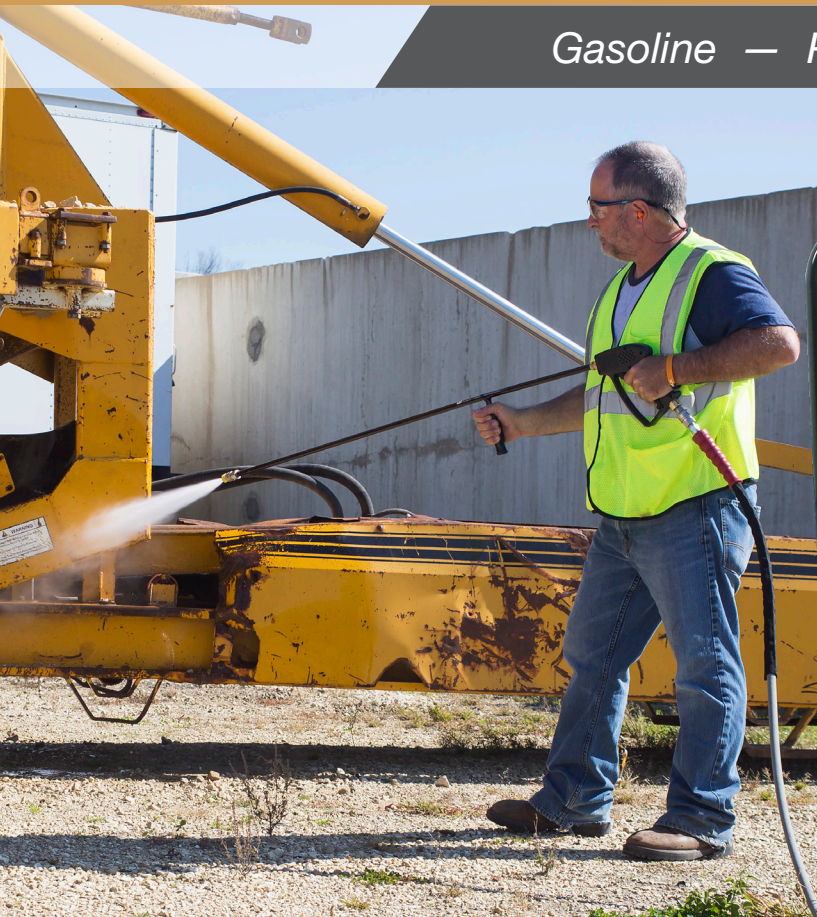


Gasoline — Portable with Roll Cage — Belt Drive



DC-5004-WC4H6A

One of the most robust cold water pressure washers on the market today, this pressure washer is equipped with a rugged roll cage making it the ideal choice for industrial jobsites where heavy-duty cleaning is a daily requirement.

Pump:

Belt drive triplex piston AR or General pump with ceramic plungers | External bypass system allows more water into the system to protect from heat build-up | Forged brass manifold | Thermal and safety relief valves | Water filter with clear sleeve for screen inspection (High capacity water filter on DC-3008-WC4H6G)

Frame:

Powder coated steel frame with 1¼-inch roll cage, handles and lifting hook | 13-inch flat-free tires with locking tire brake | Two-piece belt guard

Engine:

Performance-proven Honda OHV engine with low-oil shutdown

Components:

Fuel tank has powder coated outside and aluminized steel inside to prevent rusting | 13-gallon fuel tank capacity for 9½ hour run time

Unit Includes:

Quick connect nozzles - 0°, 15°, 25° and 40° | 50-foot x ⅝-inch non-marking high pressure hose (½-inch on DC-3008-WC4H6G) | 48-inch lance with rubber grip | Professional-grade insulated trigger gun with safety lock-off



DC-5004-WC4H6A
DC-5004-WC4H6G
DC-5005-WC4H6G

Premium Series

Cold Water – Gasoline – Portable with Roll Cage – Belt Drive

MODEL NUMBER	PSI	GPM	DISPLACEMENT/ENGINE	PUMP	UNLOADER	DIMENSIONS (LxWxH)	SHIP WT.	NET WT.
DC-3008-WC4H6G	3000	8.0	688cc Honda GX630 OHV, electric start – battery not included	General	Factory preset	43x27.75x36in.	504 lb.	438 lb.
DC-5004-WC4H6A	5000	4.0	688cc Honda GX630 OHV, electric start – battery not included	AR	Factory preset	43x27.75x36in.	499 lb.	433 lb.
DC-5004-WC4H6G	5000	4.0	688cc Honda GX630 OHV, electric start – battery not included	General	Factory preset	43x27.75x36in.	515 lb.	449 lb.
DC-5005-WC4H6G	5000	5.0	688cc Honda GX630 OHV, electric start – battery not included	General	Factory preset	43x27.75x36in.	515 lb.	449 lb.
DC-6004-WC4H6G	6000	3.7	688cc Honda GX630 OHV, electric start – battery not included	General	Factory preset	43x27.75x36in.	515 lb.	449 lb.
DC-7004-WC4H6G	7000	3.8	688cc Honda GX690 OHV, electric start – battery not included	General	Factory preset	43.25x28.5x39.25in.	515 lb.	449 lb.

Accessories:

PART NUMBER	DESCRIPTION	FITS MODELS
851-0089	50-ft. x 1/2-in. high pressure hose - For when you need extra hose for added mobility	DC-3008-WC4H6G
851-0317	50-ft. x 3/8-in. non-marking high pressure hose - For when you need extra hose for added mobility	DC-5004, DC-5005, & DC-6004 models
851-0420	50-ft. x 3/8-in. high pressure hose - For when you need extra hose for added mobility	DC-7004-WC4H6G
AW-0018-0375	Rotating nozzle - Increase your cleaning power and decrease your cleaning time, 0° spray with 25° coverage	DC-6004 & DC-7004 models
AW-7500-0035	Rotating nozzle - Increase your cleaning power and decrease your cleaning time, 0° spray with 25° coverage	DC-5004 models
AW-7500-0045	Rotating nozzle - Increase your cleaning power and decrease your cleaning time, 0° spray with 25° coverage	DC-5005-WC4H6G



DC-5004-WC4H6A

⚠ WARNING: Cancer and Reproductive Harm - www.P65Warnings.ca.gov.