



## Get More Online!

<https://www.vertiv.com/en-emea/login/>

### Vertiv™ Partner Program

Join the Vertiv Partner Program. Provide More Solutions. Gain Unparalleled Support. Maximise Your Profits.

<https://www.vertiv.com/en-emea/create-account/>



### Channel Product Selector

UPS, Accessories, PDU, Rack, Monitoring: use our tool to determine the best possible solution and share it with selected distributors. Available in 7 languages and as a mobile app.

<https://www.vertiv.com/en-emea/Interactive-Product-Selector>

### Tech Support

Our Commitment to your daily Business, provided by our World Wide Tech support available in 5 Languages (GB, ES, FR, IT, DE).

[eoc@vertiv.com](mailto:eoc@vertiv.com)

### Liebert Technical Support:

Toll-free 00-80011554499 - Toll +39 02 98250222

[liebert.upstech@vertiv.com](mailto:liebert.upstech@vertiv.com)

### Vertiv Avocent Customer Care:

[support.Avocent@vertiv.com](mailto:support.Avocent@vertiv.com)

<https://www.vertiv.com/en-emea/Avocent-Support-Contacts>

### EMEA Channel Support

For any enquiries on Channel program or Channel sales, please contact:

[emea.partnermarketing@vertiv.com](mailto:emea.partnermarketing@vertiv.com)



## Grow your Business!

Your end user can't afford its critical infrastructure to go down. At Vertiv, we have built our capabilities on delivering reliable facilities and IT Infrastructure optimisation solutions that assure Business-Critical Continuity.

### What can Vertiv's portfolio bring to end users?

Optimisation of their critical infrastructure - we, as Vertiv, promise to **maximise the availability, capacity and efficiency of their critical infrastructure.**

We can provide the ideal and complete solution for their business: our product range brings together everything you need in order to have their business up and running at any moment, but at the same time have quicker and easier access to the infrastructure.

Vertiv provides hardware and software products that offer a complete solution for infrastructure management and, besides having all these products under one roof, we also have the right people you need: **IT experts, sales consultants and technical support teams** - an entire team focused on the challenges brought by your customer.

Therefore, if your client is looking to optimise their infrastructure by investing in one organisation, rest assured that Vertiv is a sound choice.



## **AC Power and Uninterruptible Power Supplies (UPS)**

Vertiv delivers a full range of uninterruptible power supplies (UPS) and power distribution units (PDU), from individual data center solutions to integrated systems that keep network closets, computer rooms and data center infrastructure up and running.

This wide range of power capacities will bring you not only greater margins but also significant upselling opportunities.

# Desktop Protection

## AC Power Liebert® itON



## Reliable Power Protection for Desktop Workstations

400-600-800-1000-1500-2000 VA

### Key Benefits

- Automatic voltage regulator (AVR)
- Compact size
- Light weight
- Easy operation
- Overload protection and alarm
- Auto re-start with AC recovery
- Fast charging
- Cold start function
- Available in ratings from 400 VA up to 2000 VA
- USB port (for 1000 VA, 1500 VA, 2000 VA)
- Flexible output power sockets combination:
  - Schuko sockets (for 400 VA, 600 VA, 800 VA)
  - Schuko and IEC sockets (for 1000 VA, 1500 VA, 2000 VA)

### Applications

- Desktop PCs
- Professional workstations
- Small routers, bridges and hubs
- Point-of-sale terminals
- PBXs
- Other sensitive electronics

Not suitable for UK Market



**Technology:** Line interactive (VI according to IEC62040-3)  
**Connections:** Output IEC C320-C13 and Schuko (check models)  
**Communications:** USB port for 1000-1500-2000VA ratings

Model	Power Rating	Runtime*	Outputs Outlets	Dimensions HxWxD	Weight	Warranty Extension +1Y
LI32101CT00	400VA - 240W	6 mins	2 x Schuko	142x101x279 mm	3.6 kg	-
LI32111CT00	600VA - 360W	6 mins	2 x Schuko	142x101x279 mm	4.2 kg	-
LI32121CT00	800VA - 480W	3 mins	2 x Schuko	142x101x279 mm	4.9 kg	-
LI32131CT20	1000VA - 600W	6 mins	2 x Schuko + 2 x IEC C13	164x146x341 mm	8.0 kg	-
LI32141CT20	1500VA - 900W	5 mins	3 x Schuko + 3 x IEC C13	205x146x391 mm	11.1 kg	-
LI32151CT20	2000VA - 1200W	3 mins	3 x Schuko + 3 x IEC C13	205x146x391 mm	11.5 kg	-

\* Runtime 50% load

# UPS for Uninterrupted Power

## AC Power Liebert® GXT MT +



## Compact Tower UPS for High Performance Power Protection 1000-2000-3000 VA

### Key Benefits

- Double conversion on-line technology
- Compact tower design
- 0.8 output power factor
- Ultra wide input voltage range
- Automatic frequency detection
- High input power factor & low THDi
- Emergency power off (EPO)
- Energy saving mode (ECO) for high efficiency
- LCD display for operational convenience and status/fault information
- Multiple AC output interfaces via Schuko and IEC standard sockets
- Multiple communications options available through USB/RS232, and optional via volts-free contacts and SNMP cards

### Applications

- VoIP equipment
- Small office networks
- Computer rooms
- Process automation equipment
- Network storage devices

Not suitable for UK Market



<b>Technology:</b>	Online Double Conversion VFI according to IEC62040-3
<b>Connections:</b>	IEC input and IEC+Schuko plugs (output power terminals only for 3kVA)
<b>Communications:</b>	Communication cards RS232, USB, or optional SNMP/WEB or volts-free cards

Model	Power Rating	Runtime*	Outputs Outlets	Dimensions HxWxD	Weight	Warranty Extension +1Y
LI34101CT32	1000VA - 800W	9 mins	3xIEC C13+ 1 x Schuko	223x145x282 mm	9.7 kg	-
LI34111CT32	2000VA - 1600W	10 mins	3xIEC C13+ 1 x Schuko	238x145x397 mm	17.3 kg	-
LI34121CT32	3000VA - 2400W	11 mins	3xIEC C13+ 2 x Schuko +Terminals	336x190x421mm	27.5 kg	-

\* Runtime 50% load

# UPS for Uninterrupted Power

## AC Power Liebert® GXT MT +



## Compact Tower UPS for High Performance Power Protection 6000-10000 VA

### Key Benefits

- Double conversion on-line technology
- 0.8 output power factor
- Multiple communication options or network and volt-free contacts card (optional)
- LCD display and intuitive synoptic on the front panel for easy reading of UPS status
- Wide input voltage range
- Input circuit breaker
- Maintenance bypass
- Automatic frequency detection
- Minimized installation time and costs
- Small and compact footprint and size

### Applications

- VoIP equipment
- Small office networks
- Computer rooms
- Process automation equipment
- Network storage devices

Not suitable for UK Market



<b>Technology:</b>	Online Double Conversion VFI according to IEC62040-3
<b>Connections:</b>	Terminals block (input and output)
<b>Communications:</b>	RS232, USB, optional SNMP/WEB or volts-free card
<b>Options:</b>	Communication cards

Model	Power Rating	Runtime*	Outputs Outlets	Dimensions HxWxD	Weight	Warranty Extension +1Y
LI34141CT32	6000VA - 4800W	12 mins	Terminals	688x190x369 mm	72 kg	-
LI34151CT32	10000VA - 8000W	7.9 mins	Terminals	688x190x442 mm	82 kg	-

\* Runtime 50% load

AC Power  
Liebert® PSP



Best-Value Power Protection for PCs and Peripherals  
500-650 VA

Key Benefits

- 3 battery-backed UPS outlets and one surge protection-only outlet differentiated by colour
- USB port and cable
- User replaceable batteries
- Up to 4 minutes of battery backup time at full load
- Protects against lightning, spikes and surges
- Full sequenced battery testing to ensure batteries are available when needed
- Advance early warning of UPS shutdown
- 3 years standard warranty
- RJ-45 port for data line surge protection

Applications

- Professional workstations
- Small routers and bridges
- Point-of-sale terminals
- Other sensitive electronics



Technology:	Offline, VFD according to IEC62040-3
Connections:	IEC plugs (input and output)
Communications:	USB (all units)

Model	Power Rating	Runtime*	Outputs Outlets	Dimensions HxWxD	Weight	Warranty Extension +1Y
PSP500MT3-230U	500VA - 300W	11 mins	(3+1) IEC320-C13	215x87x251 mm	3.9 kg	PF1UR-MU-00
PSP650MT3-230U	650VA - 390W	8 mins	(3+1) IEC320-C13	215x87x251 mm	3.9 kg	PF1UR-MU-01

\* Runtime 50% load



## AC Power Liebert® PSA



## Performance Power Protection For PC And Office Equipment 500-650-1000-1500 VA

### Key Benefits

- Available in four ratings: 500, 650, 1000 and 1500VA
- 3 to 6 battery-backed UPS sockets, depending on model size
- One to two surge-only sockets, differentiated by color
- USB cable included
- User replaceable batteries
- Up to 4 minutes of battery backup time at full load
- Full sequenced battery testing to ensure batteries are available when needed
- Advance early warning of UPS shutdown
- 3 years standard warranty
- RJ-45 port for data line surge protection

### Applications

- Professional Desktop PC
- Professional Workstations
- Small Routers, Bridges & Hubs
- Point-of-Sale Terminals
- Other Sensitive Electronics



<b>Technology:</b>	Line Interactive, VI according to IEC62040-3
<b>Connections:</b>	IEC plugs (input and output)
<b>Communications:</b>	USB port (all units)

Model	Power Rating	Runtime*	Outputs Outlets	Dimensions HxWxD	Weight	Warranty Extension +1Y
PSA500MT3-230U	500VA - 300W	12 mins	(3+1) IEC320-C13	171x95x356 mm	5.4 kg	PF1YR-MU-01
PSA650MT3-230U	650VA - 390W	8.5 mins	(3+1) IEC320-C13	171x95x356 mm	5.9 kg	PF1YR-MU-01
PSA1000MT3-230U	1000VA - 600W	12 mins	(6+2) IEC320-C13	234x147x360 mm	9.5 kg	PF1YR-MU-02
PSA1500MT3-230U	1500VA - 900W	10.5 mins	(6+2) IEC320-C13	234x147x360 mm	11.6 kg	PF1YR-MU-04

\* Runtime 50% load

## AC Power Liebert® PSI and Liebert® PSI XR



## High Performance Rack & Tower UPS For Network Power Protection

750-1000-1500-2200-3000 VA

### Key Benefits

- Up to 9 battery-backed sockets
- Rotatable Display Panel
- Automatic Frequency Sensing
- Multiple Communications Options (USB, SNMP and Contact Closure)
- Data line surge protection
- Advance early warning of UPS system status
- Full sequenced battery testing
- Lightning and surge protection
- Remote emergency power off
- User replaceable hot swappable batteries
- Ample battery backup time at full load when utility fails, for an orderly shutdown of connected equipment
- 3 years standard warranty

### Applications

- PC
- Network workstations
- Servers
- Network closets
- Large network peripherals
- VoIP

#### Don't forget to check your Upsell Opportunities!

Do your Clients need any complementary product?  
See: **Vertiv™ Avocent® Desktop & Extension Solutions**



<b>Technology:</b>	Line Interactive, VI according to IEC62040-3
<b>Connections:</b>	IEC plugs (input and output)
<b>Communications:</b>	USB port (all units); SNMP/WEB optional
<b>Options:</b>	Battery Cabinets (only for XR models), Communication cards

Model	Power Rating	Runtime*	Outputs Outlets	Dimensions HxWxD	Weight	Warranty Extension +1Y
<b>PS750RT3-230</b>	750VA - 675W	11 mins	(8) IEC320-C13	88(2U)x440x412 mm	15 kg	PF1YR-MU-02
<b>PS1000RT3-230</b>	1000VA - 900W	12 mins	(8) IEC320-C13	88(2U)x440x412 mm	19.4 kg	PF1YR-MU-03
<b>PS1500RT3-230</b>	1500VA - 1350W	9 mins	(8) IEC320-C13	88(2U)x440x412 mm	20.9 kg	PF1YR-MU-04
<b>PS2200RT3-230</b>	2200VA - 1980W	11 mins	(8) IEC320-C13 + (1) IEC320-C19	88(2U)x440x657 mm	33.8 kg	PF1YR-MU-05
<b>PS3000RT3-230</b>	3000VA - 2700W	9 mins	(8) IEC320-C13 + (1) IEC320-C19	88(2U)x440x657 mm	37.2 kg	PF1YR-MU-05
<b>PS1000RT3-230XR</b>	1000VA - 900W	15 mins (scalable)	(6) IEC320-C13	88(2U)x440x490.5 mm	25 kg	PF1YR-MU-03
<b>PS1500RT3-230XR</b>	1500VA - 1350W	13 mins (scalable)	(6) IEC320-C13	88(2U)x440x490.5 mm	28 kg	PF1YR-MU-04
<b>PS2200RT3-230XR</b>	2200VA - 1980W	14 mins (scalable)	(6) IEC320-C13 + (1) IEC320-C19	88(2U)x440x700.5 mm	42 kg	PF1YR-MU-05
<b>PS3000RT3-230XR</b>	3000VA - 2700W	13 mins (scalable)	(6) IEC320-C13 + (1) IEC320-C19	88(2U)x440x700.5 mm	46 kg	PF1YR-MU-05
<b>PSRT3-24VBXR</b> - Battery Cabinet for 1000VA and 1500VA				88(2U)x440x490.5 mm	29 kg	-
<b>PSRT3-48VBXR</b> - Battery Cabinet for 2200VA and 3000VA				88(2U)x440x700.5 mm	29.1 kg	-
<b>IS-WEBRT3N</b> - SNMP WEB Management Card				60 x 145 x 185	0,21 kg	-

\* Runtime 50% load

## AC Power Liebert® GXT4™



## Intelligent, Reliable UPS Protection

700-1000-1500-2000-3000 VA

### Key Benefits

For robust UPS protection of up to 3 kVA, the Liebert GXT4 provides industry-leading features in a compact 2U design:

- Rotatable multi-language LCD display
- ECO mode option allows improved energy efficiency
- 0.9 output power factor to maximise power availability
- On-line design means zero transfer time. If utility power fails, your critical load will be supported by a seamless flow of power
- Easy serviceability with replaceable, hot-swappable batteries
- Controllable power to multiple devices via two independently programmable pairs of sockets
- Optional Liebert MicroPOD™ allows for maintenance
- Compatible with Vertiv monitoring suite, racks and rack PDUs
- Intelligent fan operation
- Rack and tower mounting flexibility

### Applications

- Mission critical applications and systems
- Network workstations
- Servers
- Network closets

**Don't forget to check your Upsell Opportunities!**

Do your Clients need any complementary product?

See: **Vertiv™ Avocent® Remote Management Solutions**



<b>Technology:</b>	Online Double Conversion, VFI according to IEC62040-3
<b>Connections:</b>	IEC plugs (input and output)
<b>Communications:</b>	SNMP/WEB, Modbus and Relay Card optional
<b>Options:</b>	Battery Cabinets, Communication cards, Rack mount kits, Maintenance Bypass, Warranty extensions available

Model	Power Rating	Runtime*	Outputs Outlets	Dimensions HxWxD	Weight	Warranty Extension +1Y	Warranty Extension +3Y
<b>GXT4-700RT230E</b>	700VA -630W	27 min	(6) IEC320-C13	85x430x408	15 kg	PF1YR-MU-03	PF3YR-MU-03
<b>GXT4-1000RT230E</b>	1000VA-900W	17 min	(6) IEC320-C13	85x430x408	19.4 kg	PF1YR-MU-03	PF3YR-MU-03
<b>GXT4-1500RT230E</b>	1500VA-1350W	12 min	(6) IEC320-C13	85x430x497	20.9 kg	PF1YR-MU-05	PF3YR-MU-05
<b>GXT4-2000RT230E</b>	2000VA-1800W	12 min	(6) IEC320-C13	85x430x497	33.8 kg	PF1YR-MU-05	PF3YR-MU-05
<b>GXT4-3000RT230E</b>	3000VA-2700W	12 min	(6) IEC320-C13 (1) IEC320-C19	85x430x602	37.2 kg	PF1YR-MU-06	PF3YR-MU-06
<b>GXT4-48VBATTE - Battery Cabinet</b>				85x430x497	29 kg	-	-
<b>GXT4-72VBATTE - Battery Cabinet</b>				85x430x602	29.1 kg	-	-

\* Runtime 50% load

## AC Power Liebert® GXT4™



**Don't forget to check your Upsell Opportunities!**

Do your Clients need any complementary product?  
See: **Vertiv™ Avocent® Remote Management Solutions**



## Intelligent, Reliable UPS Protection 5000-6000-10000 VA

### Key Benefits

- Rotatable multi-language LCD display panel
- ECO mode for increased efficiency
- Up to 0.9 output power factor to maximise power availability
- Compact 5Us or 6Us height and short depth (<600 mm)
- Frequency conversion capability
- Rack & tower mounting flexibility
- User replaceable hot-swappable internal batteries
- Extended backup time with additional battery cabinets
- Emergency power-off (EPO)
- Internal automatic and manual bypass
- Self-diagnostics
- 10 kVA parallel/redundant up to 2+1
- Offers a variety of communication options, providing flexible monitoring, control capabilities and preventive maintenance
- Intelligent battery management
- Wider input voltage minimizes battery use
- Battery cutoff voltage to prevent from overdischarge of batteries and to extend battery life

### Applications

- LAN and WAN servers
- Network equipment
- IP telephony deployments
- Office telecommunication systems
- Test and diagnostic equipment
- Finance applications

#### Technology:

Online Double Conversion, VFI according to IEC62040-3

#### Connections:

Terminal block (input and output) + IEC plugs (output only)

#### Communications:

SNMP/WEB, Modbus and Relay Card optional, Vertiv LIFE™ Services compatible

#### Options:

Battery Cabinets, Communication cards, Rack mount kits,  
Warranty extensions available

Model	Power Rating	Runtime*	Outputs Outlets	Dimensions HxWxD	Weight	Warranty Extension +1Y	Warranty Extension +3Y
<b>GXT4-5000RT230E</b>	5000VA-4000W	24 min	6 x IEC320-C13 + 2 x IEC320-C19 + hardwired on PD2-CE6HDWRDMBS standard power distribution	217X430X574	60 kg	PF1UR-MU-07	PF3UR-MU-07
<b>GXT4-6000RT230E</b>	6000VA-4800W	17 min	6 x IEC320-C13 + 2 x IEC320-C19 + hardwired on PD2-CE6HDWRDMBS standard power distribution	217X430X574	60 kg	PF1UR-MU-07	PF3UR-MU-07
<b>GXT4-10KRT230E</b>	10000VA-9000W	13 min	4 x IEC320-C13 + 4 x IEC320-C19 + hardwired on PD2-CE10HWRDMBS standard power distribution	261X430X581	70 kg	PF1UR-MU-08	PF3UR-MU-08
<b>GXT4-240VBATTE - Battery Cabinet</b>				73X430X581	65 kg	-	-

\* Runtime 50% load



# Single Phase UPS

## AC Power Liebert® GXT5



### Don't forget to check your Upsell Opportunities!

Do your Clients need any complementary product?  
See: **Vertiv™ Avocent® Remote Management Solutions**



## Intelligent and Efficient UPS Protection

750VA - 20kVA

### Key Benefits

- High output PF=1.0
- Full color graphic LCD display with gravity sensing
- Controllable output power sockets
- External battery cabinets with auto-detection
- Integrated POD and maintenance bypass (detachable, standard for small line only from 5-10kVA)
- Wide range of power ratings to answer any possible power requirement
- Extreme flexibility with parallel or redundant operation capability
- Battery health status and replacement date prediction
- Remote management, update and configuration
- Optimized thermal management and variable speed fan
- High efficiency up to 95% in on-line mode
- Even higher efficiency up to 98% in Active ECO mode
- Energy Star® 2.0 certified
- Programmable output sockets for optimum battery usage

### Applications

- Business and Education Communications & Network systems
- Communications and DAS
- Network/Wiring Closets
- Edge Processing – Retail, Finance, Education

#### Technology:

Online Double Conversion, VFI according to IEC62040-3

#### Connections:

Terminal block (input and output) + IEC plugs (output only)

#### Communications:

SNMP/WEB, Modbus and Relay Card optional, Vertiv LIFE™ Services compatible Battery Cabinets

#### Options:

Communication cards, Rack mount kits, Warranty extensions available

Model	Power Rating	Runtime*	Outputs Outlets	Dimensions WxDxH	Weight	Warranty Extension +1Y	Warranty Extension +3Y
GXT5-750IRT2UXLE	750 VA / 750 W	21,5 min	8 (C13)	430 x 400 x 85	21 kg	PF1YR-MU-13	PF3YR-MU-13
GXT5-1000IRT2UXLE	1000 VA / 1000 W	15 min	8 (C13)	430 x 400 x 85	21 kg	PF1YR-MU-13	PF3YR-MU-13
GXT5-1500IRT2UXLE	1500 VA / 1500 W	16 min	8 (C13)	430 x 470 x 85	21 kg	PF1YR-MU-14	PF3YR-MU-14
GXT5-2000IRT2UXLE	2000 VA / 2000 W	9 min	8 (C13)	430 x 470 x 85	21 kg	PF1YR-MU-14	PF3YR-MU-14
GXT5-3000IRT2UXLE	3000 VA / 3000 W	9 min	1(C19) 6 (C13)	430 x 540 x 85	28,2 kg	PF1YR-MU-15	PF3YR-MU-15
GXT5-5000IRT5UXLE	5000 VA-5000 W	18,5 min	Hardwire, 2 (C19), 6 (C13)	430 x 630 x 217	70,8 kg	PF1YR-MU-09	PF3YR-MU-09
GXT5-6000IRT5UXLE	6000 VA-6000 W	14,5 min	Hardwire, 2 (C19), 6 (C13)	430 x 630 x 217	70,8 kg	PF1YR-MU-10	PF3YR-MU-10
GXT5-8000IRT5UXLE	8000 VA-8000 W	9,5 min	Hardwire, 4 (C19), 4(C13)	430 x 630 x 217	70,8 kg	PF1YR-MU-11	PF3YR-MU-11
GXT5-10KIRT5UXLN	10000 VA-10000 W	7 min	Hardwire, 4 (C19), 4(C13)	430 x 630 x 217	70,8 kg	PF1YR-MU-12	PF3YR-MU-12
GXT5-16KIRT9UXLE	16000 VA-16000 W	9,5 min	Hardwire	430x630x394	135 kg	PF1YR-MU-16	PF3YR-MU-16
GXT5-20KIRT9UXLE	20000 VA-20000 W	7 min	Hardwire	430x630x394	135 kg	PF1YR-MU-17	PF3YR-MU-17

#### External Battery Cabinets:

GXT5-EBC384VRT6U (for 16 and 20kVA)

430x630x261

112 kg

GXT5-EBC36VRT2UE (for 750VA , 1000VA)

430 x 370 x 85

21 kg

GXT5-EBC48VRT2UE (for 1500VA , 2000VA)

430 x 497 x 85

28,5 kg

GXT5-EBC72VRT2UE (for 3000VA)

430 x 602 x 85

39 kg

GXT5-EBC192VRT3UE (for 5 - 10kVA)

430 x 630 x 130

57,6 kg

RDU101 SNMP-Communication card

\* Runtime 50% load

## AC Power Liebert® GXT3



## Reliable On-Line UPS Protection In A Compact Package GXT3-10000T230

### Key Benefits

- 0.9 Power Factor
- LCD display in multiple languages
- Automatic frequency detection
- User replaceable hot-swappable internal batteries
- Additional runtime with additional battery cabinets
- Vertiv™ IntelliSlot™ communications port
- Includes Windows-based configuration program
- Built-in USB communications
- Separate bypass input available
- Capable for operation as 3-phase or 1-phase input
- Emergency Power Off (EPO)
- Parallelable up to 2+1 units
- Wider input voltage window minimises battery use
- Internal automatic and manual bypass (integrated)
- Standard two-year replacement warranty
- Compact footprint
- Battery cut-off voltage to prevent from overdischarge of batteries

### Applications

- LAN & WAN Servers
- Network Equipment
- IP Telephony Deployments
- Office Telecommunications systems
- SDN & frame relay applications
- Test and Diagnostic Equipment
- Banks
- Micro Processor-controlled Equipment

#### Don't forget to check your Upsell Opportunities!

Do your Clients need any complementary product?  
See: **Vertiv™ Avocent® Remote Management Solutions**



#### Technology:

Online Double Conversion, VFI according to IEC62040-3

#### Connections:

Terminal block (input and output)

#### Communications:

SNMP/WEB, Modbus and Relay Card optional, Vertiv LIFE™ Services available

#### Options:

Battery Cabinets, Communication cards

Model	Power Rating	Runtime*	Outputs Outlets	Dimensions WxDxH	Weight	Warranty Extension +1Y	Warranty Extension +3Y
<b>GXT3-10000T230</b>	10000VA - 9000W	11 mins	terminal block	300x675x800 mm	105 kg	PF1YR-MU-08	PF3YR-MU-08
<b>GXT3-10000T220</b>	10000VA - 9000W	11 mins	terminal block	300x675x800 mm	140 kg	-	-

*GXT3-10000T220 is only UL/cUL approved (not CE)*

**GXT3-240TBATT CE - Extended Battery Cabinet  
for GXT3-10000T230, GXT3-10000T220**

300x675x800 mm

110 kg

-

-

\* Runtime 50% load

## AC Power Liebert® APS



## Modular Power Protection for Immediate and Future Load Demands

5000-10000-15000-20000 VA

### Key Benefits

- 5 kVA / 4.5 kW single phase output power modules (output PF=0.9)
- Site configurable as single phase or three phase input
- Scalable up to 20 kVA+10 kVA redundancy
- Stand alone or rack mountable
- Hot-wappable power and battery modules
- Intelligent battery modules with automatic disconnection for anomalous events
- Double conversion efficiency: 92%
- Efficiency in ECO mode up to 98%
- Long life batteries (8-10 years design life)
- 1.8 A Charging Current per module
- Optional 10 A charger module
- Input: Terminal blocks
- Output: Terminal blocks, or output sockets with the optional PODs

### Applications

- Mission critical workstations
- Small computer rooms
- Network equipment
- Telecommunications
- Finance requiring maximum availability



### Don't forget to check your Upsell Opportunities!

Do your Clients need any complementary product?  
See: **Vertiv™ Avocent® Remote Management Solutions**



### Technology:

Online Double Conversion, VFI according to IEC62040-3

### Connections:

Terminal block (input and output)

### Communications:

SNMP/WEB card and Relay Card optional, Vertiv LIFE™ Services compatible

### Options:

Battery Cabinets, redundant Power Modules, Charger, Rack mount kit, Power Distribution PODs, Seismic Floor Brackets

Model	Power Rating	Internal battery configuration	Runtime	Output	Dimensions HxWxD (mm)	Weight
AS2A0NCLMNNX000	5000VA/4500W	1 string x 12 batteries x 9Ahr	13 min	Terminals	970x440x850	189 kg
AS2A0NCMMNNX000	5000VA/4500W	2 string x 12 batteries x 9Ahr	30 min	Terminals	970x440x850	222 kg
AS2A0NCNMNNX000	5000VA/4500W	3 string x 12 batteries x 9Ahr	53 min	Terminals	970x440x850	255 kg
AS2A1NCPMNNX000	5000VA/4500W	4 string x 12 batteries x 9Ahr	82 min	Terminals	970x440x850	296 kg
AS2B0NCMMNNX000	10000VA/9000W	2 string x 12 batteries x 9Ahr	13 min	Terminals	970x440x850	231 kg
AS2B0NCNMNNX000	10000VA/9000W	3 string x 12 batteries x 9Ahr	23 min	Terminals	970x440x850	264 kg
AS2B0NCPMNNX000	10000VA/9000W	4 string x 12 batteries x 9Ahr	30 min	Terminals	970x440x850	296 kg
AS2B0NCRMNNX000	10000VA/9000W	6 string x 12 batteries x 9Ahr	53 min	Terminals	970x440x850	362 kg
AS2C0NCNMNNX000	15000VA/13500W	3 string x 12 batteries x 9Ahr	13 min	Terminals	970x440x850	272 kg
AS2C0NCQMNNX000	15000VA/13500W	5 string x 12 batteries x 9Ahr	25 min	Terminals	970x440x850	337 kg
AS2C0NCRMNNX000	15000VA/13500W	6 string x 12 batteries x 9Ahr	30 min	Terminals	970x440x850	370 kg
AS2D0NCPMNNX000	20000VA/18000W	4 string x 12 batteries x 9Ahr	13 min	Terminals	970x440x850	312 kg
AS2D0NCRMNNX000	20000VA/18000W	6 string x 12 batteries x 9Ahr	23 min	Terminals	970x440x850	378 kg
AS7EBC2CCLBX000	External battery cabinet with 2 battery strings				970x440x712	132 kg
AS7EBC6CCLBX000	External battery cabinet with 6 battery strings				970x440x712	253 kg

Runtime in minutes at 50% load

## AC Power

**Liebert® EXS**

**Liebert® ITA2**

**Liebert® NXC**



## Further enterprise UPS solutions from Vertiv

Vertiv also offers a complete range of efficient, reliable Three-phase UPS systems with up to 60 KVA that can be configured to meet the specific needs of your customers critical applications.

For more information on our Three-phase UPS portfolio or your individual project support please contact your Vertiv Channel Account Manager or email us at

[UKIE.channel@vertivco.com](mailto:UKIE.channel@vertivco.com)

You can also find more information on our Website [Vertiv.com](https://www.vertiv.com).



## AC Power Liebert® EXS



## Optimized and Integrated Three-Phase UPS Solution with High Efficiency Power Protection

10000-15000-20000-30000-40000 VA

### Key Benefits

- Output power factor up to 1
- Double conversion efficiency up to 96.2%
- ECO mode efficiency up to 99%
- Input current total harmonic distortion correction (THDi) < 3%
- Battery charger up to 13 A
- Integrated manual bypass
- Integrated input and output breakers/switches
- Integrated parallel load bus and synchronization port (LBS)

### Applications

- Banking, Financial and Insurance
- Data Center/Colocation/Hosting
- Government
- Manufacturing
- Healthcare

#### Technology:

Double-Conversion, VFI-SS-111 according to IEC62040-3

#### Connections:

Three -phase or Single-phase output connection (single-phase output for 10-20kVA only), Power cables connection from the rear

#### Communications:

USB port, SNMP/WEB, Modbus and Relay Card optional, Vertiv LIFE™ Services compatible

#### Options:

Multiple internal battery configurations, External Battery Cabinets, Battery shelves, Battery temperature compensation kit, Parallel and Dual Bus cables, Communication cards

Model	Power Rating	Internal battery configuration	Runtime*	Dimensions WxDxH	Weight
EXS101C0010A0A0	10 KVA	1x32x9 Ah	11 mins	335 x 650 x 1300 mm	185 Kg
EXS101C0020A0A0	10 KVA	2x32x9 Ah	28 mins	335 x 650 x 1300 mm	285 Kg
EXS102C0030A0A0	10 KVA	3x32x9 Ah	50 mins	577 x 650 x 1300 mm	435 Kg
EXS102C0040A0A0	10 KVA	4x32x9 Ah	64 mins	577 x 650 x 1300 mm	535 Kg
EXS151C0010A0A0	15 KVA	1x32x9 Ah	6 mins	335 x 650 x 1300 mm	185 Kg
EXS151C0020A0A0	15 KVA	2x32x9 Ah	17 mins	335 x 650 x 1300 mm	285 Kg
EXS152C0030A0A0	15 KVA	3x32x9 Ah	28 mins	577 x 650 x 1300 mm	435 Kg
EXS152C0040A0A0	15 KVA	4x32x9 Ah	42 mins	577 x 650 x 1300 mm	535 Kg
EXS201C0010A0A0	20 KVA	1x32x9 Ah	5 mins	335 x 650 x 1300 mm	185 Kg
EXS201C0020A0A0	20 KVA	2x32x9 Ah	11 mins	335 x 650 x 1300 mm	285 Kg
EXS202C0030A0A0	20 KVA	3x32x9 Ah	19 mins	577 x 650 x 1300 mm	435 Kg
EXS202C0040A0A0	20 KVA	4x32x9 Ah	28 mins	577 x 650 x 1300 mm	535 Kg
EXS301C0021A0A0	30 KVA	2x32x9 Ah	6 mins	440 x 750 x 1600 mm	400 Kg
EXS301C0031A0A0	30 KVA	3x32x9 Ah	10 mins	440 x 750 x 1600 mm	500 Kg
EXS301C0041A0A0	30 KVA	4x32x9 Ah	14 mins	440 x 750 x 1600 mm	600 Kg
EXS401C0031A0A0	40 KVA	3x32x9 Ah	7 mins	440 x 750 x 1600 mm	500 Kg
EXS401C0041A0A0	40 KVA	4x32x9 Ah	10 mins	440 x 750 x 1600 mm	600 Kg

\*The battery runtime is indicative and is meant for new and fully charged batteries

\*Longer runtimes are available with dedicated external battery cabinets options, contact us for further informations

## AC Power Liebert® ITA2



## Remarkable Efficiency and Flexibility Characterize the Liebert® ITA2 UPS Family

10000-15000-20000 VA

### Key Benefits

- Rack-tower design for installation flexibility
- Able to deliver both three-phase and single-phase output
- Ultra-high power density
- 0.99 input power factor for better grid or generator compatibility
- Unity output power factor for additional power availability
- Efficiency in double conversion up to 96.2%
- ECO mode operation with efficiency up to 99% and remarkable energy saving performance
- Powerful charging capability with consequent reduction of the battery recharging time
- Programmable dry contacts
- Programmable output power terminals

### Applications

- Small computer rooms
- Branch offices
- Servers
- Network computers and peripherals
- Storage device
- VoIP

<b>Technology:</b>	Double-Conversion, VFI-SS-111 according to IEC62040-3
<b>Connections:</b>	Three -phase or Single-phase output connection, Terminal block on the back of UPS
<b>Communications:</b>	USB port, SNMP/WEB, Modbus and Relay Card optional, Vertiv LIFE™ Services compatible
<b>Options:</b>	Battery Module, Power Distribution Module, Parallel and Dual Bus cables, Rack installation kit, Battery temperature compensation kit, Intellislot extender

Model	Power Rating	External battery configuration	Runtime*	Dimensions WxDxH	Total Weight
ITA2101A0000A00	10 KVA	-	-	435 x 500 x 130 mm	23 Kg
ITA2101A0000A00 + 2x U16-09C1	10 KVA	1x32x9 Ah	12 mins	435 x 500 x 390 mm	125 Kg
ITA2101A0000A00 + 4x U16-09C1	10 KVA	2x32x9 Ah	30 mins	435 x 500 x 650 mm	227 Kg
ITA2151A0000A00	15 KVA	-	-	435 x 500 x 130 mm	23 Kg
ITA2151A0000A00 + 2x U16-09C1	15 KVA	1x32x9 Ah	6 mins	435 x 500 x 390 mm	125 Kg
ITA2151A0000A00 + 4x U16-09C1	15 KVA	2x32x9 Ah	18 mins	435 x 500 x 650 mm	227 Kg
ITA2151A0000A00 + 6x U16-09C1	15 KVA	3x32x9 Ah	30 mins	435 x 500 x 910 mm	329 Kg
ITA2201A0000A00	20 KVA	-	-	435 x 500 x 130 mm	23 Kg
ITA2201A0000A00 + 4x U16-09C1	20 KVA	2x32x9 Ah	12 mins	435 x 500 x 650 mm	227 Kg
ITA2201A0000A00 + 6x U16-09C1	20 KVA	3x32x9 Ah	21 mins	435 x 500 x 910 mm	329 Kg
ITA2201A0000A00 + 8x U16-09C1	20 KVA	4x32x9 Ah	30 mins	435 x 500 x 1170 mm	431 Kg

\* The battery runtime is indicative and is meant for new and fully charged batteries

\*Longer runtimes are available with the use of additional external battery modules, contact us for further information.

## AC Power Liebert® NXC



## Compact and Reliable Power in a Fully Integrated Packaged Solution

60000 VA

### Key Benefits

- Output power factor up to 0.9
- Double conversion efficiency up to 95.5%
- ECO mode efficiency up to 98%
- Input current total harmonic distortion correction (THDi) < 5%
- Battery charger up to 7.5 kW
- Integrated manual bypass
- Integrated input and output breakers/switches
- Integrated parallel load bus and synchronization port (LBS)

### Applications

- Banking, Financial and Insurance
- Data Center/Colocation/Hosting
- Government
- Manufacturing
- Healthcare
- Transportation
- Retail and Wholesale

#### Technology:

Double-Conversion, VFI-SS-111 according to IEC62040-3

#### Connections:

Power cables connection from the bottom

#### Communications:

USB port, SNMP/WEB, Modbus and Relay Card optional, Vertiv LIFE™ Services compatible

#### Options:

Multiple internal battery configurations, External Battery Cabinets, Battery shelves, Battery temperature compensation kit, Parallel and Dual Bus cables, Communication cards

Model	Power Rating	Internal battery configuration	Runtime*	Dimensions WxDxH	Weight
LI60601B0051A10	60 KVA	1x32x34 Ah	6 mins	600 x 850 x 1600 mm	620 Kg
LI60601B0071A10	60 KVA	2x40x34 Ah	10 mins	600 x 850 x 1600 mm	715 Kg

\* The battery runtime is indicative and is meant for new and fully charged batteries.

\*Longer runtimes are available with dedicated external battery cabinets options, contact us for further information.

## IT & Edge Infrastructure

Optimising technology and performance needs for IT applications. Our integrated platform provides standard and specific, custom solutions.

Our family of racks enables cable management, power distribution, ventilation or sophisticated precision air conditioning solutions. Each of our products meets the strictest standards for durability and safety. Contact the Vertiv team for modular designs for data centers of any type or dimensions.



IT & Edge Infrastructure  
Vertiv™ VR Rack



Rapid deployments everywhere you operate

Standardize your deployments around the world and bring them online faster with the Vertiv™ VR rack. The Vertiv VR supports a wide variety of equipment, including: servers, storage, switches, routers, PDUs, UPSs, console port servers and KVM switches.

Key Benefits

- Available in 8 standard sizes
- Full depth adjustability of the 19" rails
- Frame design allow for more than 2.5" more usable depth than similar sized racks
- Doors that have 77% perforation and can be hinged on either side
- Tool-less removable top panel has four cable entry holes allowing for up to 2000 Cat6 cables, or 60A PDU plugs
- Two dual purpose full height depth adjustable PDU / cable management brackets mounted in the zero U space with tool-less button mounting of rack PDUs, accessory mounting holes for tool-less cable management accessories, and integrated cable tie off positions
- 42U frame height that allows for the rack to pass through standard doors on casters
- Simple external baying, allows for metric baying or on 24" centers
- Split side panels with single locking slam latch allows for easy single person removal / installation

Applications

- Data centers
- Server rooms
- Edge applications

**Frame:**

- Frame capable of supporting up to 3000 lbs (1360kg) Static, 2250 lbs (1022kg) Dynamic.
- Simple external baying, allows for metric or on 24" centers and leveling feet incorporated into the frame for easy adjustment.
- 42U frame height that will allow access through standard doors on four swivel casters.

**Certifications:** EIA 310E - UL2416 - RoHS - REACH

**Color:** Frame, doors, side panels, top panel, rails and PDU brackets are powder coated RAL 7021 (Black)

Part Number	U	Height mm (inches)	Width mm (inches)	Depth mm (inches)
VR3100	42	2000 (78.6")	600 (23.6")	1100 (43.3")
VR3300	42	2000 (78.6")	600 (23.6")	1200 (47.8")
VR3150	42	2000 (78.6")	800 (31.5")	1100 (43.3")
VR3350	42	2000 (78.6")	800 (31.5")	1200 (47.8")
VR3107	48	2265 (89.2")	600 (23.6")	1100 (43.3")
VR3307	48	2265 (89.2")	600 (23.6")	1200 (47.8")
VR3157	48	2265 (89.2")	800 (31.5")	1100 (43.3")
VR3357	48	2265 (89.2")	800 (31.5")	1200 (47.8")



## High Density Cable Entry Top Panel

Removable openings for cable entry — ready for front / rear cabling. Can accommodate over 2000 Cat 6 cables.



## Doors

Single and split 77% perforated doors providing maximum airflow. Lift off hinges for easy removal, and field reversibility.

## Frame

More usable depth compared to similar sized rack.



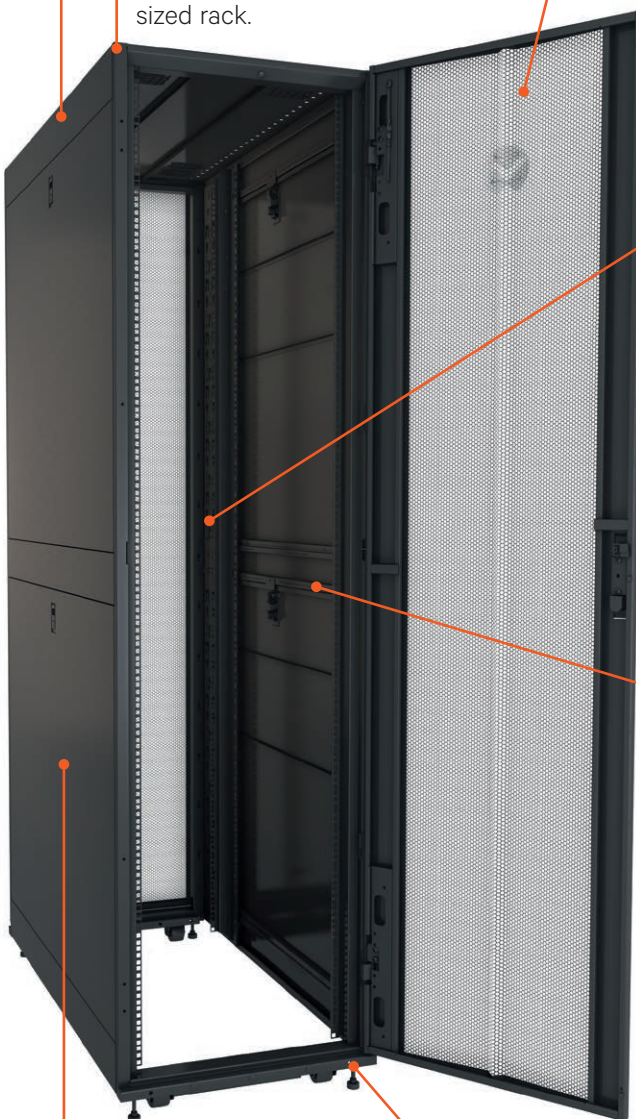
## Tool-less Cable Management

Requires just inserting and twisting the tool-less accessories on 19" vertical mounting rail, or the PDU / cable management brackets.



## Integrated 19" Rail Alignment

Ensures 19" rails are positioned correctly without measuring.



## Split Locking Side Panels

For quick and easy installation and maintenance. Locks provide security.



## Leveling Feet

Accessible from the top of the frame for easy adjustment.

## CABLE MANAGEMENT

### Horizontal Cable Organizers with Metal D Rings

Part Number	Description
VRA1000	1U Horizontal Cable Organizer with Metal D Rings (Qty. 1)
VRA1001	2U Horizontal Cable Organizer 2U with Metal D Rings (Qty. 1)



VRA1000

VRA1001

### Horizontal Cable Managers with Covers

Part Number	Description
VRA1002	Horizontal Cable Manager, 1U x 4" Deep, Single-Sided with Cover (Qty. 1)
VRA1003	2U x 4" Deep Horizontal Cable Manager, Single-Sided with Cover (Qty. 1)
VRA1022	2U x 6" Deep Horizontal Cable Manager, Single-Sided with Cover (Qty. 1)
VRA1023	1U x 6" Deep Horizontal Cable Manager, Single-Sided with Cover (Qty. 1)



VRA1002

VRA1022

### Tool-Less Cable Management: Lobster Claw

Part Number	Description
VRA1004	Tool-Less Cable Management -Lobster Claw (Qty. 10)
VRA1006	Tool -Less Cable Management -Lobster Claw (Qty. 100)



VRA1004

### Tool-Less Cable Management: Velcro Strap

Part Number	Description
VRA1005	Tool Less Cable Management - Velcro Strap (Qty. 10)
VRA1007	Tool Less Cable Management - Velcro Strap (Qty. 100)



VRA1005

### 1/4 Turn Tool-Less Cable Management: D Rings

Part Number	Description
VRA1008	Tool-less D Rings Small (Qty. 10)
VRA1009	Tool-less D Rings Small (Qty. 100)
VRA1010	Tool-less D Rings Large (Qty. 10)
VRA1011	Tool-less D Rings Large (Qty. 100)



VRA1008 and  
VRA1009

VRA1010 and  
VRA1011

### Horizontal Cable Manager Side Channel

Part Number	Description
VRA1013	Horizontal Cable Organizer Side Channel 20 to 33 inch adjustment (Qty. 1)
VRA1024	Horizontal Cable Organizer Side Channel 22 to 38 inch adjustment (Qty. 1)



VRA1013

CABLE MANAGEMENT

Vertical Cable Management Kit

Part Number	Description
VRA1014	Vertical Cable Manager 600mm Wide 42U (Qty. 2)
VRA1015	Vertical Cable Manager for 600mm Wide 48U (Qty. 2)
VRA1016	Vertical Cable Manager for 800mm Wide 42U (Qty. 2)
VRA1017	Vertical Cable Manager for 800mm Wide 48U (Qty. 2)



VRA1014



VRA1016

Hinged Covers

Part Number	Description
VRA1018	Hinged Covers 800mm Wide 42U Vertical Cable Manager (Qty. 2)
VRA1020	Hinged Covers 800mm Wide 48U Vertical Cable Manager (Qty. 2)



VRA1018

Vertical Cable Organizer

Part Number	Description
VRA1021	Vertical Cable Organizer, 8 Cable Rings, Zero U (Qty. 2)



VRA1021



AIR FLOW MANAGEMENT

Blank Panel 19” Tool Less Blanking Panel

Part Number	Description
VRA2000	1U 19" Black Plastic Tool Less Airflow Blanking Panel (Qty. 10)
VRA2001	1U 19" Black Plastic Tool Less Airflow Blanking Panel (Qty. 200)
VRA2002	19" Sheet Metal Airflow Blanking Panel Kit (1U, 2U, 4U, 8U) Black (Qty. 1 ea. Size)
VRA2003	1U 19" Sheet Metal Airflow Blanking Panel Kit Black (Qty. 2) Black



VRA2002

Air Recirculation Prevention Kit

Part Number	Description
VRA2004	Air Recirculation Prevention Kit



VRA2004

19" Rail Brush Strips

Part Number	Description
VRA2005	19" Rail Brush Strips, 800mm Wide (Qty. 12)



VRA2005

Cable Pass Through Brush Kit for Top Panel

Part Number	Description
VRA2006	Cable Pass Through Brush Kit for Top Panel (Qty. 8)

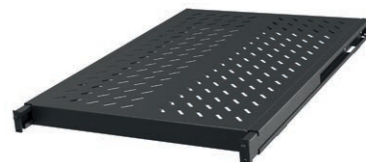


VRA2006

## SHELVES AND SUPPORT BRACKETS

### 19" Depth Adjustable Fixed Shelf 250lbs Black

Part Number	Description
VRA3000	1U Depth Adjustable Fixed shelf 250lbs Black (Qty. 1)



VRA3000

### 2U 19" Cantilever Fixed Shelf 50Lbs Black

Part Number	Description
VRA3001	2U 19" Cantilever Fixed Shelf 50lbs Black (Qty. 1)



VRA3001

### 1U Depth Adjustable Sliding Shelf 200lbs Black

Part Number	Description
VRA3002	1U Depth Adjustable Sliding Shelf 100lbs Black (Qty. 1)
VRA3003	1U Depth Adjustable Sliding Shelf 200lbs Black (Qty. 1)



VRA3003

### 1U Depth Adjustable Equipment Support Rails 100lbs

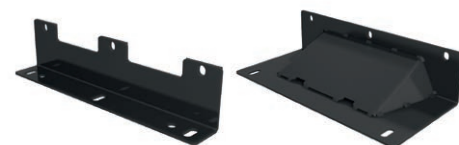
Part Number	Description
VRA3004	1U Depth Adjustable Equipment Support Rails 100lbs (Qty. 2)



VRA3004

### Bolt Down Brackets

Part Number	Description
VRA4000	VR Bolt Down Brackets (Qty. 2)
VRA4001	VR Anti Tip Stabilizer Plate for 600mm/800mm Wide cabinets (Qty. 2)

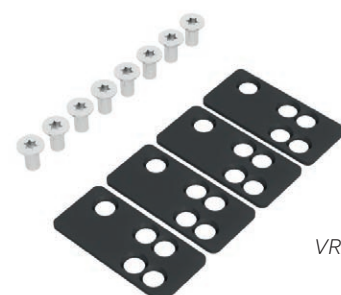


VRA4000

VRA4001

### Baying and Hardware

Part Number	Description
VRA5002	Baying Kit: Baying Hardware Kit (1 Kit)
VRA5003	Baying Gasket kit for use when baying racks on 24" centers



VRA5002

SHELVES AND SUPPORT BRACKETS

Mounting Hardware

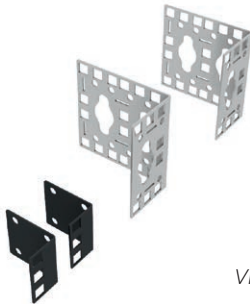
Part Number	Description
VRA5001	10-32 Cage Nuts (Qty. 50)
VRA5000	Mounting Hardware (Qty. 50 M6 cage nuts, screws, washers)



VRA5001

Zero U Accessory Mounting Bracket (Qty. 2)

Part Number	Description
VRA5004	Zero U Accessory Mounting Bracket (Qty. 2)



VRA5004

DOORS AND SECURITY

Handle Options

Part Number	Description
VRA6023	Combination Lock Handle (Qty. 2)
VRA6022	Standard Door Handle (Qty. 1)



VRA6022



VRA6023

## SERVICE PARTS

### 19" Server Rails

Part Number	Description
<b>VRA6013</b>	42U x 600mm Wide 19" Server Rails (Cage Nut) Black (Qty. 2)
<b>VRA6014</b>	42U x 800mm Wide 19" Server Rails (Cage Nut) Black (Qty. 2)
<b>VRA6015</b>	48U x 600mm Wide Server Rails (Cage Nut) Black (Qty. 2)
<b>VRA6016</b>	48U x 800mm Wide 19" Server Rails (Cage Nut) Black (Qty. 2)

### Single Perforated Doors

Part Number	Description
<b>VRA6001</b>	42U x 600mm Wide Single Perforated Door Black (Qty. 1)
<b>VRA6002</b>	42U x 800mm Wide Single Perforated Door Black (Qty. 1)
<b>VRA6003</b>	48U x 600mm Wide Single Perforated Door Black (Qty. 1)
<b>VRA6004</b>	48U x 800mm Wide Single Perforated Door Black (Qty1)

### Split Perforated Doors

Part Number	Description
<b>VRA6005</b>	42U x 600mm Wide Split Perforated Doors Black (Qty. 2)
<b>VRA6006</b>	42U x 800mm Wide Split Perforated Doors Black (Qty. 2)
<b>VRA6007</b>	48U x 600mm Wide Split Perforated Doors Black (Qty. 2)
<b>VRA6008</b>	48U x 800mm Wide Split Perforated Doors Black (Qty. 2)

### Split Side Panels

Part Number	Description
<b>VRA6009</b>	42U x 1100mm Deep Split Side Panels Black (Qty. 2)
<b>VRA6010</b>	42U x 1200mm Deep Split Side Panels Black (Qty. 2)
<b>VRA6011</b>	48U x 1100mm Deep Split Side Panels Black (Qty. 2)
<b>VRA6012</b>	48U x 1200mm Deep Split Side Panels Black (Qty. 2)

### PDU/Cable Management Brackets

Part Number	Description
<b>VRA6025</b>	42U 4" Wide PDU/Cable Management Bracket Black (Qty 2)
<b>VRA6026</b>	48U 4" Wide PDU/Cable Management Bracket Black (Qty 2)

### Top Panels

Part Number	Description
<b>VRA6017</b>	VRA6017: 600mm Wide x 1100mm Deep Top Panel Black (Qty. 1)
<b>VRA6018</b>	VRA6018: 800mm Wide x 1100mm Deep Top Panel Black (Qty. 1)
<b>VRA6019</b>	VRA6019: 600mm Wide x 1200mm Deep Top Panel Black (Qty. 1)
<b>VRA6020</b>	VRA6020: 800mm Wide x 1200mm Deep Top Panel Black (Qty. 1)

### Miscellaneous

Part Number	Description
<b>VRA6021</b>	Replacement Roof Grommets Black (Qty. 8)
<b>VRA6024</b>	Caster Kit (Qty. 4)

## IT & Edge Infrastructure Vertiv™ Geist™ Rack PDUs



### Power perfectly configured for your IT application

The next generation of Rack PDUs, Vertiv Geist rPDU Rack PDUs, provides the industry's highest availability and most intelligent power monitoring and distribution — complete with simplified energy management, and cost savings that ensure your data centre and your business — can operate at peak efficiency.

#### Key Benefits

- Designed specifically to accommodate higher power densities and be resistant to higher temperatures
- Easily integrate with existing network and security architectures
- Energy and power metering provides users the information to maximise the data center power and cooling infrastructure
- Modular hot swappable controller card
- Allows you to predict failing conditions before they occur
- Lowest power consumption
- Ability to be preinstalled in Vertiv rack solutions
- Software supported mass firmware updates, backup and configuration (Vertiv Intelligence Director)
- Reduce idle energy costs with bistable relays on Switched units
- Built-to-Order options available for additional configuration needs

#### Applications

- Data centers
- Computer rooms
- Server racks

#### Warranty:

5-Year limited warranty if registered within 120 days of purchase, otherwise warranty defaults to 3 years.

## Rack PDUs Product Chart

Model	rPDU Type	rPDU Sub-Type	HORIZONTAL/VERTICAL	Volts	AMPS	Max kW	Plug Type	Output C13	Output C19	Max OPERATING TEMP*	VI DIRECTOR
VP9559	Basic	Standard	H	230 VAC	16 A	3.6 kVA	IEC60320 C20	10	2	45°C	N/A
VP7552	Basic	Standard	V	230 VAC	16 A	3.6 kVA	IEC60320 C20	20	4	45°C	N/A
VP7551	Basic	Standard	V	230 VAC	16 A	3.6 kVA	IEC60309 1ph/N/PE 6h	20	4	45°C	N/A
VP7553	Basic	Standard	V	230VAC	32 A	7.3 kVA	IEC60309 1ph/N/PE 6h	20	4	45°C	N/A
VP7557	Basic	Standard	V	230/400 VAC	16 A	11 kVA	IEC60309 3ph/N/PE 6h	36	6	45°C	N/A
VP8858	Monitored	Unit Level	V	230 VAC	16 A	3.6 kVA	IEC60320 C20	18	2	60°C	YES
VP8853	Monitored	Unit Level	V	230 VAC	32 A	7.3 kVA	IEC60309 1ph/N/PE 6h	36	6	60°C	YES
VP8881	Monitored	Unit Level	V	230/400 VAC	16 A	11 kVA	IEC60309 3ph/N/PE 6h	36	6	60°C	YES
VP8886	Monitored	Unit Level	V	230/400 VAC	32 A	22 kVA	IEC60309 3ph/N/PE 6h	30	12	60°C	YES
VP8959EU3	Switched	Unit Level	V	230 VAC	16 A	3.6 kVA	IEC60320 C20	21 U-Lock U-Lock	3	50°C	YES
VP8953	Switched	Unit Level	V	230 VAC	32 A	7.3 kVA	IEC60309 1ph/N/PE 6h	20 U-Lock U-Lock	4	50°C	YES

\*See data sheet for maximum operating temperature requirements.

Product chart shows limited spec information. For complete product details visit [VertivCo.com](https://www.vertivco.com).





## Outlet Control

Address unresponsive equipment or increase runtime of critical equipment upon power failure with outlet-level control.



## Upgradable & Hot-Swappable

Easily update your rPDU's monitoring capabilities to adapt to latest technologies and changing business needs.



## Environmental Monitoring

Proactively monitor environmental conditions within the cabinet to ensure optimal operating conditions. A variety of sensors are available to meet your needs including temperature, humidity, airflow, door position, flood detection and more.



## Vertiv Intelligence Director

Daisy-chain up to 50 devices on a single IP address. Reduce deployment time with self-configuration of downstream devices.



## U-Lock

Secure power cords and avoid accidental disconnections. Receptacles are color-coded by circuit for instant identification.



## Available Features

Built-to-Order units provide additional features, colored chassis options, and varying power and receptacle configurations. Contact your Vertiv sales team for more information.



## High Temperature Grade

Up to 60°C working ambient variants for high temperature environments.



## Remote Connectivity

Access the rPDU remotely via the network interface or serial connection to monitor power consumption and configure user-defined alert notifications to prevent downtime.



## Fault-Tolerant Daisy Chaining

Simplifies intelligent rPDU connectivity and ensures data is reported even when a break in the network chain occurs.



## Visible Light Communication (VLC)

Optically transmit data from the rPDU display to your mobile device using VLC for quick and secure access to unit and power consumption data.



## Small Footprint and Low Profile Breakers

Compact size to install in tight spaces.



## Power Monitoring 1% accuracy

Allows data centre managers to accurately monitor input and outlet level power usage with 1% monitoring accuracy tested to ANSI and IEC standards.



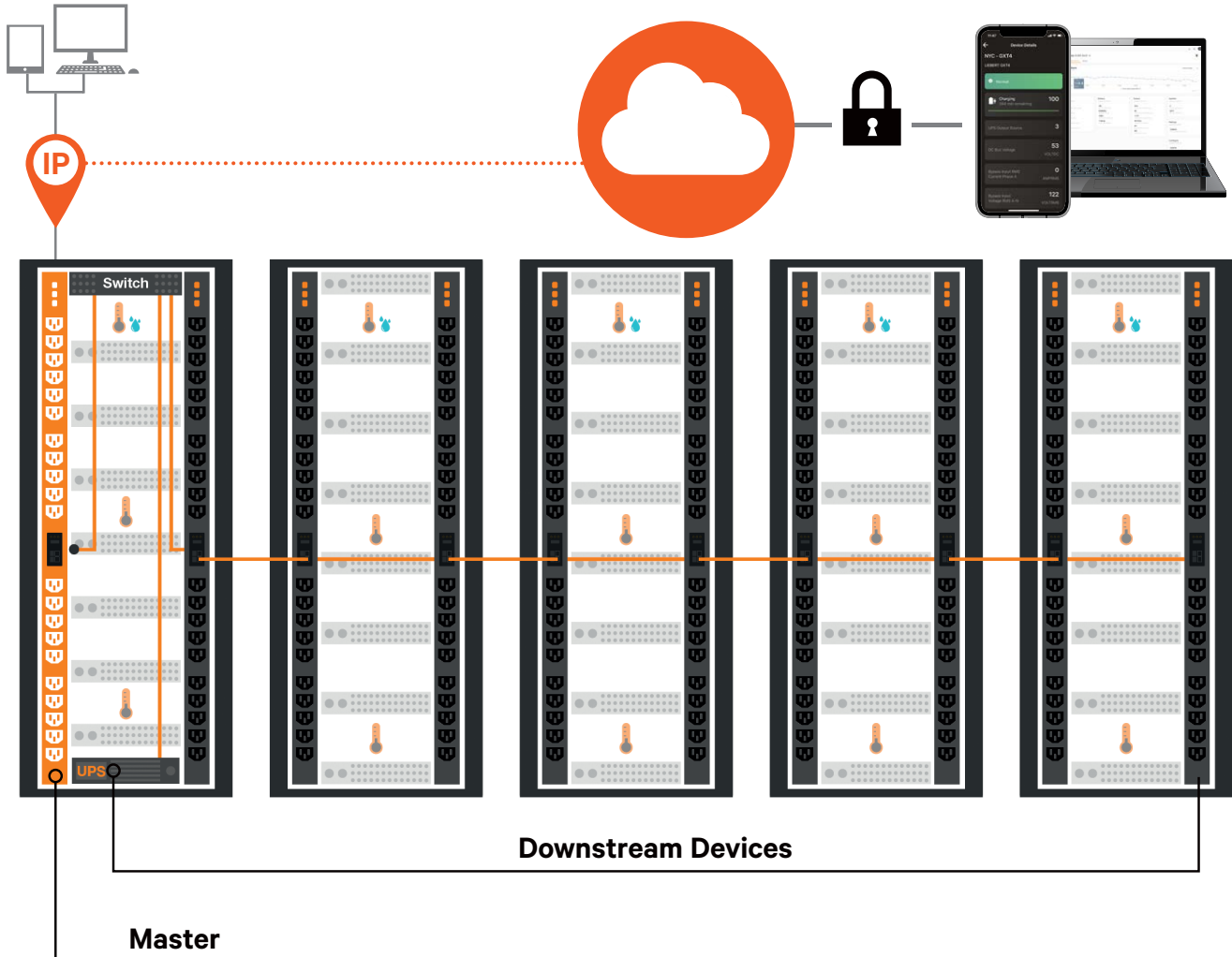
## Universal Input

A universal input with a pivoting connector simplifies IT power infrastructure deployments by enabling users to standardize on a single rPDU globally.



## Vertiv™ Intelligence Director

PLUG-N-PLAY DATA CENTRE INFRASTRUCTURE ENABLING LIGHTNING FAST DEPLOYMENTS



**The next generation of Vertiv™ Geist™ rPDUs offer enhanced monitoring and simplified networking with the introduction of Vertiv Intelligence Director.**

*\*One unit per group is required to have an IMD-03E, IMD-03E-S, IMD-3E or IMD-3E-S, installed. An IMD-03E-S can be purchased separately to upgrade a Monitored - Unit Level unit.*

*\*\*Vertiv Intelligence Director compatible with Vertiv Liebert® GXT4, GXT5, and VRC products.*

- On Monitored\* and Switched units, users have the ability to daisy chain up to 50 devices with a single IP address.
- Access data from all downstream rPDU and UPS\*\* devices from one master rPDU.
- Users are able to aggregate data by grouping devices by rack or row.
- Downstream devices self-configure, significantly reducing deployment time.

### How it works

1. Designate a Switched or Monitored unit as the master unit.
2. Connect up to 50 devices through a network switch or by daisy chaining the rPDUs to the master unit.
3. Securely access downstream device data via SNMP or the master unit user interface through a single IP address and bring the consolidated data in your private cloud.

- Securely transmit device data to the Vertiv Intelligence cloud for anytime access to critical infrastructure information.

## Monitoring

### Facilities and Monitoring Solutions



#### SNMP and Web Monitoring

The Vertiv Intellislot Unity Card provides SNMP and web-based management to your UPS. The card gives you the power to monitor and control your Liebert UPS from a Network Management Station, with Vertiv Trellis Critical Insight or Vertiv Trellis Power Insight software, or from any PC running Microsoft® Internet Explorer™. Connecting to your UPS is as simple as launching a web browser.



#### Trellis™ Power Insight

The Trellis™ Power Insight Application is designed to monitor your Liebert® UPS devices and provides real-time trending for critical UPS performance including voltage and current utilization.

#### Trellis™ Critical Insight

Trellis Critical Insight is an application that provides centralised monitoring and control of the distributed and disparate sensors and equipment. In addition to monitoring equipment and systems in your single data centre, multiple remote sites or combinations of central and remote locations. The solution automatically collects performance and alarm data from multi-vendor critical infrastructure equipment using industry standards protocols and automatically makes this data available in a variety of formats to provide the information that data centre operators and managers need for their daily jobs. Solution provides the following capabilities:

- Monitoring thousands of equipment/sites
- Alarms via SMS and email
- Equipment control
- Preconfigured SNMP and web services to 3rd parties
- Graphical navigation
- Web-based application with SSL encryption
- Unlimited number of users



## Data Center Management Solutions

Vertiv™ Avocent® products are a core component of Vertiv's Data Center Infrastructure. These solutions enable small to enterprise sized organisations to reduce costs, increase security and optimise availability and productivity.

This portfolio includes hardware and software solutions. The hardware solutions enable secure, auditable remote access, control and management of critical devices through patented, out-of-band technology. This remote access can be to any distance and can scale to high definition audio and video for specialist verticals.

The software solutions deliver efficiencies to the data center specialist by centralising management of all IT devices. Furthermore, when documenting the data center, managing and planning capacity, we offer organisations a single source of truth tool where they can manage all aspects of this efficiently.

**To make it easier, we have divided our products into two sections, as follows:**

- **Section 1** - Focuses on customers who want desktop and server room solutions
- **Section 2** - Focuses on customers who require enterprise level solutions to meet the demanding business challenges which require an agile IT infrastructure

### SECTION 1

## Desktop and Server Room IT Management Solutions

Our range of products enables the end user to:

- Efficiently access control and manage the server room without the need to physically be there
- Help remove IT assets from unsuitable work areas, like hospitals, factories, warehouses, clean rooms, shops
- De-clutter work places where users require access to multiple PCs, but do not want to use multiple displays, keyboards and mice
- Efficiently access server room assets and maximise server room space

## Desktop Solutions Vertiv™ Avocent® KVM

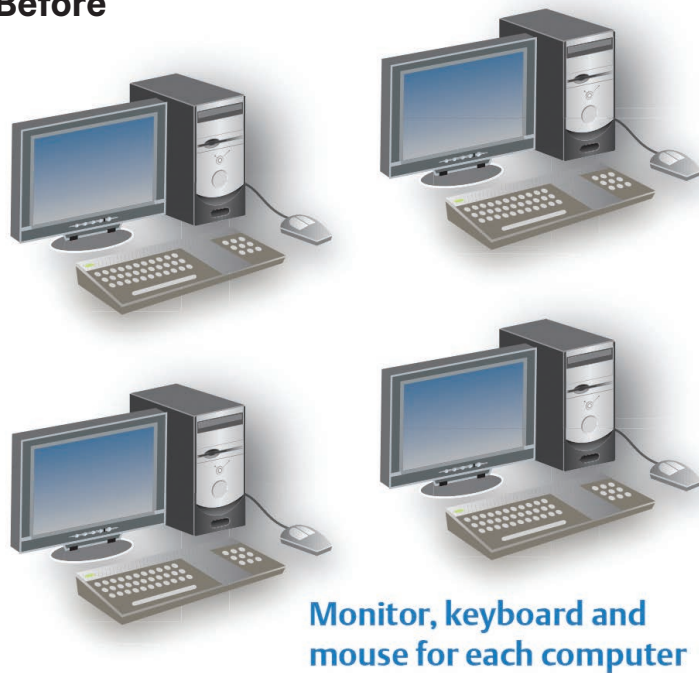
Having a dedicated display/keyboard/mouse for accessing each PC, can take up a lot of space and also cause unnecessary hardware cost. The whole process can become a costly mess.

This is where the Vertiv Avocent® Keyboard, Video, Mouse (KVM) Appliance comes in: our switch makes access possible to multiple PCs with only one set of peripherals and no software. With the Vertiv Avocent KVM Switch, the end user can immediately shift between multiple devices with high video resolutions and audio and USB sharing, without configuring settings.

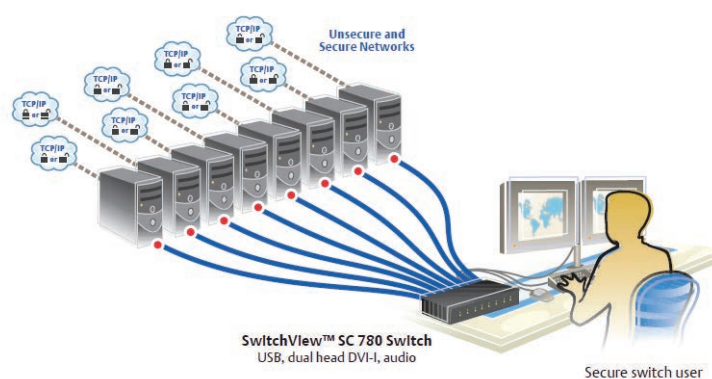
Simply plug in our device and benefit from:

- More space
- Less costs (no need to invest in several peripherals)
- Increased efficiency – easier to switch between devices
- A more productive work environment

### Before



### After





## Desktop Solutions

### Vertiv™ Avocent® SwitchView™ KVM

Vertiv Avocent SwitchView KVM switches enable you to use a single keyboard, monitor and mouse to access multiple PCs. SwitchView KVM switches can support PS/2 and/or USB PCs, and SwitchView multimedia switches let you share USB devices, speakers and a microphone between PCs.

For more security focussed customers, Vertiv Avocent SwitchView SC KVM switches are field-proven, secure solutions for government agencies and other environments with high security requirements. These solutions allow users to switch safely between computers, operating at different classification levels, from a single switch, providing continuous access to critical data.

Beyond validation by the National Information Assurance Partnership (NIAP) Common Criteria to Evaluation Assurance Level (EAL) 4+ to 2+, the Vertiv Avocent SwitchView SC product line includes a full suite of features to increase security and ensure data protection without limiting the user experience.

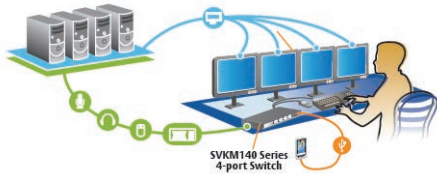
Part Number	Description
<b>SV220-xxx</b>	2-Port DVI-I Standard KVM
<b>SV220D-xxx</b>	2-Port DisplayPort Standard KVM
<b>SV220H-xxx</b>	2-Port HDMI Standard KVM
<b>SV240-xxx</b>	4-Port DVI-I Standard KVM
<b>SV240H-xxx</b>	4-Port HDMI Standard KVM
<b>SV240D-xxx</b>	4-Port Display Port Standard KVM
<b>SV340-xxx</b>	4-Port DH DVI-I Standard KVM
<b>SV340H-xxx</b>	4-Port DH HDMI Standard KVM
<b>SV340D-xxx</b>	4-Port DH Display port Standard KVM
<b>SC620-xxx</b>	1 user, 2 systems, SwitchView SC switch, USB, DVI-I (dual link), audio
<b>SC620C-xxx</b>	1 user, 2 systems, SwitchView SC switch, USB, DVI-I (dual link), audio and CAC
<b>SC640-xxx</b>	1 user, 4 systems, SwitchView SC switch, USB, DVI-I (dual link), audio
<b>SC640C-xxx</b>	1 user, 4 systems, SwitchView SC switch, USB, DVI-I (dual link), audio and CAC
<b>SC680-xxx</b>	1 user, 8 systems, SwitchView SC switch, USB, DVI-I (dual link), audio
<b>SC740-xxx</b>	1 user, 4 systems, SwitchView SC switch, USB, DVI-I (dual link, dual head), audio
<b>SC740C-xxx</b>	1 user, 4 systems, SwitchView SC switch, USB, DVI-I (dual link, dual head), audio and CAC
<b>SC780-xxx</b>	1 user, 8 systems, SwitchView SC switch, USB, DVI-I (dual link, dual head), audio
<b>SC840</b>	4 systems, 1 display connection, DVI-I, single-link/dual-link, HDMI and VGA with adapter
<b>SC845</b>	4 systems, 1 port, 1 display connection, DVI-I, single-link/dual-link, HDMI and VGA with adapter
<b>SC840D</b>	4 system connections, 1 display connection, DP 1.2
<b>SC845D</b>	4 system connections, 1 port, 1 display connection, DP 1.2
<b>SC840H</b>	4 system connections, 1 display connection, HDMI 1.4
<b>SC845H</b>	4 system connections, 1 port, 1 display connection, HDMI 1.4
<b>SC885</b>	8 systems, 1 port, 1 display connection, DVI-I, single-link/dual-link, HDMI and VGA with adapter
<b>SC940</b>	4 system connections, 2 display connections, DVI-I, single-link/dual-link HDMI and VGA with adapter
<b>SC945</b>	4 system connections, 1 port, 2 display connections, DVI-I, single-link/dual-link HDMI and VGA with adapter
<b>SC940D</b>	4 system connections, DP 1.2
<b>SC945D</b>	4 system connections, 1 port, DP 1.2
<b>SC940H</b>	4 system connections, 2 display connections, HDMI 1.4
<b>SC945H</b>	4 system connections, 1 port, 2 display connections, HDMI 1.4
<b>SC985</b>	8 systems, 2 port, 2 display connection, DVI-I, single-link/dual-link, HDMI and VGA with adapter
<b>SC240-xxx</b>	1x4 SwitchView SC switch, PS/2, USB, VGA, CAC Reader Support, Intrusion detection
<b>SC320-xxx</b>	1 user, 2 systems, SwitchView SC switch, expanded USB, DVI-I (dual link), audio (4 port model also available)
<b>SC380-xxx</b>	1 user, 4 systems, SwitchView SC switch, expanded USB, DVI-I (dual link, single head), audio
<b>SC620-xxx</b>	1 user, 2 systems, SwitchView SC switch, USB, DVI-I (dual link), audio (4 or 8 port model also available)
<b>SC740-xxx</b>	1 user, 4 systems, SwitchView SC switch, USB, DVI-I (dual link, dual head), audio (8 port model also available)

When ordering products please replace the suffix "-xxx" with the suffix for your region, as follows:

- 001 All Regions Specific to ACS, MPU & LRA products. The -001 part number will now ship with a universal power cable (IEC C13-C14) for direct connection into a PDU
- 201 UK and Ireland
- 202 European region
- 203 Switzerland

## Desktop Solutions

### Vertiv™ Avocent® Cybex™ KM Switches



The Vertiv family of KM switches delivers the ideal solution for streamlining access to critical information from multiple systems while maintaining high security.

The Vertiv KM switches can support up to four systems with a single keyboard and mouse. In addition, the switches can be easily configured to display content in dual, triple or quad head monitor configurations, allowing the 4-port KM switch to support up to 16 monitors at once.

#### Choosing a Cybex™ KM Switches allows you to:

- Increase productivity with simultaneous access to all required information via cursor navigation switching
- Reduce cost with access to multiple systems using a single keyboard and mouse
- Support the mobile worker with instant access to mobile and USB device data and a high-speed mobile charging port
- Simplify work with ability to copy and paste data

Part Number	Description
<b>SVKM120-xxx</b>	2-port desktop KM, Front-panel USB 2.0, audio
<b>SVKM140-xxx</b>	4-Port Standard KM
<b>SCKM120-xxx</b>	2-port Secure KM
<b>SCKM140-xxx</b>	4-port Secure KM
<b>SCKM145-xxx</b>	4-port Secure KM + 1 DPP
<b>CBL0130</b>	Vertiv Avocent Cybex™ SCKM140 cable, USB keyboard, mouse with speakers - 1.8m
<b>CBL0131</b>	Vertiv Avocent Cybex™ SCKM140 cable, USB keyboard, mouse with speakers - 3m
<b>CBL0132</b>	Vertiv Avocent Cybex™ SCKM145 cable, USB keyboard, mouse with speakers & CAC - 1.8m
<b>CBL0133</b>	Vertiv Avocent Cybex™ SCKM145 cable, USB keyboard, mouse with speakers & CAC - 3m

When ordering products please replace the suffix "-xxx" with the suffix for your region, as follows:

- 001 All Regions Specific to ACS, MPU & LRA products. The -001 part number will now ship with a universal power cable (IEC C13-C14) for direct connection into a PDU
- 201 UK and Ireland
- 202 European region
- 203 Switzerland

Desktop and Server  
Room Solutions  
Vertiv™ Avocent®  
Extension Solutions

If your business involves having expensive hardware in a dangerous environment, you definitely need a solution that allows you to protect your investment.

For example, having a computer in a manufacturing area can easily cause damages to the device, causing you to lose important data and a lot of money. If you're wondering how you can avoid this in the future, the Vertiv Avocent Longview is the solution! Our product is the simple and inexpensive solution that allows you to remove the PC from the harmful environment, without losing any of the functionality.

**The Vertiv Avocent Longview is the perfect device for you, if your business involves the following:**

- Manufacturing, hospitals or laboratories
- Environments where protection from theft is needed
- Environments where heat, noise and dust are harmful to electronic equipment

Part Number	Description
LV3010P-xxx	LongView single VGA, USB, audio, CATx 300M
LV3020P-xxx	LongView dual VGA, USB, audio, CATx 300M
LV4010P-xxx	LongView single DVI, USB, audio, CATx 50M
LV4010P-xxx	LongView single DVI, USB, audio, CATx 50M
LV4020P-xxx	LongView dual DVI, USB, audio, CATx 50M
LV5020P-xxx	LongView dual DP, USB, audio, CATx 150M

When ordering products please replace the suffix "-xxx" with the suffix for your region, as follows:  
-001 All Regions Specific to ACS, MPU & LRA products. The -001 part number will now ship with a universal power cable (IEC C13-C14) for direct connection into a PDU  
-201 UK and Ireland  
-202 European region  
-203 Switzerland

## Server Room IT Management Solutions

### Vertiv™ Avocent® "at-the-rack" access Solutions

When managing a server room, individually accessing each rack and device can waste a lot of time.

Vertiv offers you the solution which allows you to manage these devices from one central point. With the Vertiv Avocent Rack Solutions you can access and control the server room without the need to physically be there. Not only do the rack solutions allow you to be in another room as the servers, but they also allow you to manage the servers from another building, country or continent as long as you have an Internet connection, through our digital IP range.

#### To sum up, by investing in the Vertiv Avocent Rack Solutions, you benefit from:

- More TIME – connect to any device in the server room, wherever you are, and stop wasting the time that takes for you to actually be there
- Proximity – an Internet connection can bring you closer to your server room, anywhere you are on the globe
- Less Costs – by accessing the servers faster, you can decrease the down time, thus allowing your business to save more money
- Simplify work with ability to copy and paste data

Part Number	Description
4SV1000-xxx	1 local user, 4 systems switch with OSD, USB and PS/2 support
8SV1000-xxx	1 local user, 8 systems switch with OSD, USB and PS/2 support
16SV1000-xxx	1 local user, 16 systems switch with OSD, USB and PS/2 support
AV3108-xxx	1x8 CAT5 digital KVM switch
AV3216-xxx	2x16 CAT5 digital KVM switch
MPUIQ-VMCHS	Server interface module for VGA, USB keyboard, mouse supporting virtual media, CAC and USB2.0.
MPUIQ-VMCHD	Server Interface Module for HDMI video, USB keyboard/mouse supporting virtual media, CAC and USB2.0.
MPUIQ-VMCDV	Server Interface Module for DVI video, USB keyboard/mouse supporting virtual media, CAC and USB2.0.
MPUIQ-VMCDP	Server Interface Module for DisplayPort video, USB keyboard/mouse supporting virtual media, CAC and USB2.0.
PS2IAC-7	7 ft. PS2 CAT-5 integrated access cable
PS2IAC-10	10 ft. PS2 CAT-5 integrated access cable
PS2IAC-15	15 ft. PS2 CAT-5 integrated access cable
USB IAC-7	7 ft. USB CAT-5 integrated access cable
USB IAC-10	10 ft. USB CAT-5 integrated access cable
USB IAC-15	15 ft. USB CAT-5 integrated access cable
AVRIQ-USB2	AV HIGH-RES/VM/CAC/USB2HS IQ MODULE
AVRIQ-VSN	Server Interface module for VGA or 13W3, Sun keyboard, mouse
AVRIQ-SRL	Server Interface module for VT100 Serial Based Devices for extended distance (requires UPD module)
UPD-xxx	Power Supply, Power Cord and 4 output cable to support up to 4 AVRIQ-SRL modules

When ordering products please replace the suffix "-xxx" with the suffix for your region, as follows:

- 001 All Regions Specific to ACS, MPU & LRA products. The -001 part number will now ship with a universal power cable (IEC C13-C14) for direct connection into a PDU
- 201 UK and Ireland
- 202 European region
- 203 Switzerland

Server Room IT  
Management Solutions  
LCD Trays

Even though managing your infrastructure remotely gives you many benefits, there will be times when you will need to physically be there to add more hardware, memory, etc.

In order to do that, you need local access devices that get the job done efficiently. So, forget the crash carts, the long cable wires and wasting time by connecting/ disconnecting the peripherals! Vertiv introduces you the built-in Vertiv™ Avocent® LCD tray, which allows you to save space and give you efficient access to the rack. Our products are developed smart, therefore offering you a better solution to managing your IT infrastructure.

**The Vertiv Avocent LCD Trays are no different, hence offering you the following benefits:**

- More Space – being compact, our LCD trays consume a minimum of space at the rack;
- Simplicity – the product is easy to mount and connect;
- Efficiency – a better working environment equals more productivity;
- Durability – our LCD trays are made to last!

The compact design is well-suited for the small to midsize business environment, data center and server rooms. Vertiv Avocent LCD consoles are available as a standalone or with an 8- or 16-port KVM switch in the same 1U space.

Part Number	Description
LRA185KMM-xxx	1U 19" LCD console w/ USB touchpad and keyboard
LRA185KMM8-xxx	1U 19" LCD console w/ USB touchpad, keyboard and pre-mounted 8-ports AutoView 3108 switch
LRA185KMM16-xxx	1U 19" LCD console w/ USB touchpad, keyboard and pre-mounted 16-ports AutoView 3216 switch

When ordering products please replace the suffix "-xxx" with the suffix for your region, as follows:  
-001 All Regions Specific to ACS, MPU & LRA products. The -001 part number will now ship with a universal power cable (IEC C13-C14) for direct connection into a PDU  
-201 UK and Ireland  
-202 European region  
-203 Switzerland

### SECTION 2

## Enterprise IT Infrastructure Solutions for Data Center

If you want to increase your profit, reduce your IT costs and streamline your data center management, you are certainly looking for:

#### 1. Remote Management

Remotely and securely access and manage data center IT assets.

#### 2. Centralisation

Centralise and standardise IT remote management.

#### 3. Capacity Management and Planning

Get visibility into current data center capacity and the ability to accurately forecast needs.

#### 4. Power Management

Optimise your customers' data center power requirements and ensure maximum availability of their infrastructure.



### Enterprise IT Infrastructure Solutions for Data Center Remote Management



With our technology, you can remotely manage any device, any location, any vendor, any time, securely.

This applies to servers and other IT and network devices (routers, switches, firewalls, etc). Administrators can control every connected device from anywhere they like, as if they were actually on site – even when the device itself can no longer communicate over the network. As a result, the response time and outage duration are shortened, thereby improving IT management efficiency and IT availability

#### Serial Consoles

Secure remote access to devices via their console port. Using ACS console servers, IT professionals and network operations center (NOC) personnel can conduct secure remote data center management including remote control, equipment monitoring or diagnosing and troubleshooting equipment.

#### Vertiv™ Avocent® ACS 8000

Integrating important new connectivity features such as gigabit fiber, USB and sensors. A dual-core ARM processor architecture with expanded memory capabilities. Optimal performance, security, reliability for a complete out-of-band management solution.

#### Vertiv Avocent ACS 6000

##### Advanced Console Server

The ACS 6000 console servers are Vertiv Avocent's next generation console manager. They provide secure, remote access to network devices and UNIX / LINUX-based servers.

#### Vertiv Avocent ACS v6000

##### Virtual Advanced Console Server

Advanced console server functionality encapsulated in a virtual machine. Tapping the direct serial connections of the virtual machine on which it resides, this technology delivers higher availability of servers in even the most complex cloud environment.

#### Vertiv Avocent ACS 800

The Avocent ACS 800 serial console provides serial access, environmental monitoring, IoT integration and remote networking capability to the Edge oriented market sectors of financial institutions, retail chains, education and others.

## Section 2

Part Number	Description
<b>ACS-V6000-0004</b>	4 Port Virtual ACS v6000 Appliance License
<b>ACS-V6000-0008</b>	8 Port Virtual ACS v6000 Appliance License
<b>ACS-V6000-0016</b>	16 Port Virtual ACS v6000 Appliance License
<b>ACS-V6000-0024</b>	24 Port Virtual ACS v6000 Appliance License
<b>ACS-V6000-0048</b>	48 Port Virtual ACS v6000 Appliance License
<b>ACS6004SAC-G2</b>	ACS 6000 4-port unit single AC power supply
<b>ACS6004DAC-G2</b>	ACS 6000 4-port unit dual AC power supply
<b>ACS6004MDAC-G2</b>	ACS 6000 4-port unit dual AC power supply with built-in modem
<b>ACS6008SAC-G2</b>	ACS 6000 8-port unit single AC power supply
<b>ACS6008DAC-G2</b>	ACS 6000 8-port unit dual AC power supply
<b>ACS6008MDAC-G2</b>	ACS 6000 8-port unit dual AC power supply with built-in modem
<b>ACS6016SAC-G2</b>	ACS 6000 16-port unit single AC power supply
<b>ACS6016DAC-G2</b>	ACS 6000 16-port unit dual AC power supply
<b>ACS6016MDAC-G2</b>	ACS 6000 16-port unit dual AC power supply with built-in modem
<b>ACS6032SAC-G2</b>	ACS 6000 32-port unit single AC power supply
<b>ACS6032DAC-G2</b>	ACS 6000 32-port unit dual AC power supply
<b>ACS6032MDAC-G2</b>	ACS 6000 32-port unit dual AC power supply with built-in modem
<b>ACS6048SAC-G2</b>	ACS 6000 48-port unit single AC power supply
<b>ACS6048DAC-G2</b>	ACS 6000 48-port unit dual AC power supply
<b>ACS6048MDAC-G2</b>	ACS 6000 48-port unit dual AC power supply with built-in modem
<b>ACS8008SAC-400</b>	8-Port ACS8000 Console System with single AC Power Supply
<b>ACS8008SDC-400</b>	8-Port ACS8000 Console System with single DC Power Supply
<b>ACS8008DAC-400</b>	8-Port ACS8000 Console System with dual AC Power Supply
<b>ACS8008MSDC-400</b>	8-Port ACS8000 Console System with single DC Power Supply and Analog Modem
<b>ACS8008MDAC-400</b>	8-Port ACS8000 Console System with dual AC Power Supply and Analog Modem
<b>ACS8016SAC-400</b>	16-Port ACS8000 Console System with single AC Power Supply
<b>ACS8016DAC-400</b>	16-Port ACS8000 Console System with dual AC Power Supply
<b>ACS8016MDAC-400</b>	16-Port ACS8000 Console System with dual AC Power Supply and Analog Modem
<b>ACS8032SAC-400</b>	32-Port ACS8000 Console System with single AC Power Supply
<b>ACS8032DAC-400</b>	32-Port ACS8000 Console System with dual AC Power Supply
<b>ACS8032DDC-400</b>	32-Port ACS8000 Console System with dual DC Power Supply
<b>ACS8032MDAC-400</b>	32-Port ACS8000 Console System with dual AC Power Supply and Analog Modem
<b>ACS8032MDDC-400</b>	32-Port ACS8000 Console System with dual DC Power Supply and Analog Modem
<b>ACS8048SAC-400</b>	48-Port ACS8000 Console System with single AC Power Supply
<b>ACS8048DAC-400</b>	48-Port ACS8000 Console System with dual AC Power Supply
<b>ACS8048DDC-400</b>	48-Port ACS8000 Console System with dual DC Power Supply
<b>ACS8048MDAC-400</b>	48-Port ACS8000 Console System with dual AC Power Supply and Analog Modem
<b>ACS8048MDDC-400</b>	48-Port ACS8000 Console System with dual DC Power Supply and Analog Modem
<b>ACS802EAC-400</b>	ACS800 2-port unit, external AC/DC Power, PDU power cable
<b>ACS802MEAC-400</b>	ACS800 2-port unit w/analog modem, external AC/DC, PDU cable
<b>ACS804EAC-400</b>	ACS800 4-port unit, external AC/DC Power, PDU power cable
<b>ACS804MEAC-400</b>	ACS800 4-port unit w/analog modem, external AC/DC, PDU cable
<b>ACS808EAC-400</b>	ACS800 8-port unit external AC/DC Power, PDU power cable
<b>ACS808MEAC-400</b>	ACS800 8-port unit w/analog modem, external AC/DC, PDU cable

## Section 2

Part Number	Description
<b>ADB0036</b>	RJ45 to DB9F cross converter
<b>ADB0037</b>	RJ45 to DB9M cross converter
<b>ADB0045</b>	SX 550m multi mode SFP fiber transceiver
<b>ADB0047</b>	LX/LH 10km single SFP fiber transceiver
<b>ADB0200</b>	RJ45 to DB9F s/t converter
<b>ADB0210</b>	RJ45 to DB9M s/t converter
<b>CAB0036</b>	RJ45 to DB9F cross cable
<b>CAB0286</b>	Serial Cable - Cable DB-9 female to DB-9 female crossover 6 feet
<b>ADB0017</b>	RJ45 to DB25F cross converter
<b>ADB0025</b>	RJ45 to DB25M cross converter
<b>CAB0017</b>	RJ45 to DB25F cross cable
<b>CAB0025</b>	RJ45 to DB25M s/t cable
<b>CAB0046</b>	RJ45 to DB25M cross cable
<b>CON0091</b>	DB9M to DB9M gender changer
<b>CON0092</b>	DB25F to DB25F gender changer
<b>RMK-88</b>	0U Rack Mount Kit for ACS8000/ACS9000
<b>RMK-89</b>	1U Rack Mount Kit for ACS8000/ACS9000
<b>RMK-91</b>	Rack Mount Kit, 1U tray for ACS800
<b>RMK-92</b>	Rack Mount Kit, DIN-Rail mount for ACS800
<b>RMK-93</b>	Rack Mount Kit, wall mount for ACS800

### Enterprise IT Infrastructure Solutions for Data Center

#### Vertiv™ Avocent® Universal Management Gateway



#### Key Benefits

- **Consolidated Management:** Combines the functions of KVM over IP, serial console over IP, rack PDU, SP, and environmental sensor management into a single chassis
- **Always-On:** Highly reliable, local, remote and out-of-band access to data center infrastructure ensures that monitoring, control, and management can be done at any time, from any place
- **Enhanced Security:** Shields embedded service processors from unauthorized access; reducing the risk of malicious intrusion
- **Streamlined Installation:** Leverages pre-built service processor profiles for discovery and management, streamlining discovery and setup for newly installed hardware
- **Universal Connectivity:** Protects infrastructure investments and eases data center transitions with integrated support for a broad range of IT platforms
- **Multi-Tenant Design:** Creates a secure environment, improving compliance and auditing tasks for customers considering Colocation and Cloud implementations.
- **Includes HTML5 viewer support,** no longer the need to exclusively rely on Java for KVM sessions

#### VERTIV AVOCENT UNIVERSAL MANAGEMENT GATEWAY

Part #	Description
<b>Vertiv Avocent Universal Management Gateway</b>	
UMG4000-400	UMG 4000 40P(AS) 512SP 5000DP
<b>Vertiv Avocent Universal Management Gateway Adapters</b>	
UMIQ-V2	UM KVM MODULE - VGA+SP DUAL RJ45
<b>Vertiv Avocent Universal Management Gateway Accessories</b>	
RMK-50	RACK-MOUNT KIT FOR UM APPLIANCE
WMK-01	WALL-MOUNT KIT FOR UM APPLIANCE
UMIQ-PS	POWER SUPPLY MODULE W/CABLE

### Enterprise IT Infrastructure Solutions for Data Center

**Vertiv™ Avocent®  
MergePoint Unity™**

The Vertiv Avocent MergePoint Unity switch is the next generation KVM over IP switch.

This industry-leading switch provides IT administrators a complete and secure remote management solution to access and control servers, networking equipment and other devices found in data centers and branch offices.

#### Key Benefits

- Advanced Remote Management - Provides secure and remote, out-of-band connections directly to the physical KVM, USB and serial ports to complement existing in-band software management tools
- Meet Service Level Agreements and Minimise Downtime - Unified approach enables IT administrators a faster method to diagnose, reconfigure or restore equipment
- Virtual Media - Enables USB media such as CD-ROMs, flash memory and external drives to be virtually attached to a remote server's USB port
- CAC/Smart Card Support - Utilizing the virtual media capabilities remote or local users can map a USB-based smart card reader to the attached servers and authenticate using their smart cards
- Enhanced Serial Adapters - Supports standard, remote SSH connections to the attached serial devices and includes electronic pin-out options for quick and easy connections to the console ports on Cisco network equipment
- Power Device Port - Connect supported rack PDUs for integrated power control, measurement and reporting
- FIPS 140-2 Compliant Cryptography - The FIPS mode of operation uses an embedded FIPS 140-2 certified OpenSSL cryptographic module (Certificate #1051)
- Includes HTML5 viewer support, no longer the need to exclusively rely on Java or ActiveX for KVM sessions

Part Number	Description
<b>DSAVIQ-PS2M</b>	Virtual Media server interface module for VGA video, PS/2 keyboard and mouse, and USB 2.0 virtual media w/ 14 in. PS/2 and USB cables, required for DSR and AutoView™ switches.
<b>UPD-xxx</b>	Power Supply, Power Cord and 4 output cable to support up to 4 DSRIQ-SRL modules
<b>MPU108EDAC-001</b>	8 port, 1 digital KVM path, Dual AC Power Supply
<b>MPU1016DAC-001</b>	16 port, 1 digital KVM path, Dual AC Power Supply
<b>MPU2016DAC-001</b>	16 port, 2 digital KVM paths, Dual AC Power Supply
<b>MPU2032DAC-001</b>	32 port, 2 digital KVM paths, Dual AC Power Supply
<b>MPU4032DAC-001</b>	32 port, 4 digital KVM paths, Dual AC Power Supply
<b>MPU8032DAC-001</b>	32 port, 8 digital KVM paths, Dual AC Power Supply
<b>MPUIQ-VMCHD</b>	Server Interface Module for HDMI video, USB keyboard/mouse supporting virtual media, CAC and USB2.0. Used with MPU appliance.
<b>MPUIQ-VMCHS</b>	HIGH-RES/VM/CAC/USB2HS IQ MODULE
<b>MPUIQ-VMCHS32</b>	HIGH-RES/VM/CAC/USB2HS IQ MODULE 32 PACK
<b>MPUIQ-VMCDV</b>	Server Interface Module for DVI video, USB keyboard/mouse supporting virtual media, CAC and USB2.0. Used with MPU appliance.
<b>MPUIQ-VMCDP</b>	Server Interface Module for DisplayPort video, USB keyboard/mouse supporting virtual media, CAC and USB2.0. Used with MPU appliance.
<b>MPUIQ-SRL</b>	MergePoint Unity switch serial IQ module

### IT Infrastructure Solutions for Data Center and Control Rooms

#### Vertiv™ Avocent® Matrix Digital High Performance KVM System

The next-generation version of Vertiv Avocent High Performance KVM products leverages the experience Vertiv has gained with the Vertiv Avocent AMX™ and HMX product lines to create the best-of-breed platform.

This unified approach enables the Vertiv Avocent Matrix to combine the instantaneous switch time of the Vertiv Avocent AMX system with the digital quality and advanced management features of the Vertiv Avocent HMX system.

#### Platform Approach

The platform's design creates a future-proof environment where customers can expand functionalities as new technology becomes available, such as alterations in display or peripheral standards.

Video Compression algorithm enables a pixel-accurate, lossless video experience with lag-free, real-time interaction to computing equipment via any USB enabled device.

#### Unified Management

Compatibility with LDAP and other user authentication frameworks allows the Vertiv Avocent Matrix High Performance KVM to be added easily to existing workflows and setups.

Part Number	Description
<b>MXMGR-R2</b>	Matrix Manager Software
<b>MXR5110-xxx</b>	Matrix Receiver, CATX, USB, single DVI-I, audio
<b>MXS5132-xxx</b>	Matrix 32-port rack mountable CATX switch with flexible ports and redundant power
<b>MXS5120-xxx</b>	Matrix 20-port rack mountable CATX switch with flexible ports
<b>MXT5110-DVI</b>	Matrix Transmitter, Copper, DVI-D with CBL0086 included
<b>MXT5120-VGA</b>	Matrix Transmitter, Copper, VGA with CBL0087 included
<b>DMK-08</b>	Desk Mount Kit for Matrix Receiver
<b>CBL0090</b>	USB keyboard, mouse & DVI-D video cable & audio - 6 ft.
<b>CBL0091</b>	USB keyboard, mouse & DVI-D video cable & audio - 12 ft.
<b>CBL0086</b>	USB keyboard & mouse & DVI-D video cable & audio - 3 ft.
<b>CBL0087</b>	USB keyboard & mouse & VGA video cable & audio - 3 ft.
<b>CBL0088</b>	USB keyboard & mouse & VGA video cable & audio - 6 ft.
<b>CBL0089</b>	USB keyboard & mouse & VGA video cable & audio - 12 ft.
<b>HMX5100T-xxx</b>	HMX TX single DVI-D, USB, audio, SFP- transmitter
<b>HMX5100R-xxx</b>	HMX RX single DVI-D, USB, audio, SFP-receiver
<b>HMX5200R-xxx</b>	HMX RX dual DVI-D, USB, audio, SFP-receiver
<b>HMX5200T-xxx</b>	HMX TX dual DVI-D, USB, audio, SFP- transmitter
<b>HMX6200T-xxx</b>	HMX TX dual DVI-D, QSXGA, USB, audio, SFP- transmitter
<b>HMX6200R-xxx</b>	HMX RX dual DVI-D, QSXGA, USB, audio, SFP-receiver
<b>HMX6210T-xxx</b>	HMX TX dual DVI-D, QSXGA, USB, audio, SFP, VNC- transmitter
<b>RMk-74</b>	Matrix 1U Rack Mount for 3 Transmitters or 2 Receivers
<b>RMK-72</b>	Replacement Rack Mount for MXS5132/MXS5120 Switch

When ordering products please replace the suffix "-xxx" with the suffix for your region, as follows:

-001 All Regions Specific to ACS, MPU & LRA products. The -001 part number will now ship with a universal power cable (IEC C13-C14) for direct connection into a PDU

-201 UK and Ireland

-202 European region

-203 Switzerland



### Enterprise IT Infrastructure Solutions for Data Center

#### Vertiv™ Avocent® DSView™ Management software

#### Centralisation

IT administrators need to access IT devices from anywhere, carry out diagnoses and implement changes regularly. Regardless of the condition or status of the operating system or network, we offer a software solution which provides a secure, centralised management solution for all connected IT assets – the Vertiv Avocent DSView management software.

When used in conjunction with serial console appliances, rack PDUs, service processor gateways and KVM appliances, the hardware and software combine to allow IT administrators to remotely access, monitor and control target devices on multiple platforms at numerous locations—anywhere, anytime.

#### When using Vertiv Avocent DSView software you benefit from:

- Easier Administration
- A secure, browser-based user interface for central administration of the entire integrated IT
- Reliable Access
- Hub-and-spoke architecture allows for high availability and decentralised, consolidated and location-independent access
- Easy Expansion
- Easy to incorporate new technologies and provides an integration option for VMware, Citrix and Hyper-V – in addition to an API for own developments and third party tools and systems
- Higher Security
- Supports seamless integration with existing security policies, offers various authentication mechanisms and encrypts the entire data traffic

Part Number	Description
DSV4-START	DSView software Starter Pack (1 Hub, 1 Spoke, 250 Managed Devices)
DSV4-STND	DSView software Standard Pack (1 Hub, 2 Spokes, 500 Managed Devices)
DSV4-PLUS	DSView software Plus Pack (1 Hub, 4 Spokes, 2,000 Managed Devices)
DSV4-PREM	DSView software Premium Pack (1 Hub, 8 Spokes, 5,000 Managed Devices)
DSV4-MAX	DSView software Max Pack (1 Hub, 15 Spokes, Unlimited Managed Devices)
DSV4-SPOKE	DSView software Spoke Server add-on license
DSV4-ZONE	DSView software single Zone add-on license
DSV4-DEV1	DSView software Managed Device license – 1-pack
DSV4-DEV10	DSView software Managed Device license – 10-pack
DSV4-DEV50	DSView software Managed Device license – 50-pack
DSV4-DEV100	DSView software Managed Device license – 100-pack
DSV4-DEV500	DSView software Managed Device license – 500-pack
DSV4-DEV1000	DSView software Managed Device license – 1,000-pack
DSV4-DEV10000	DSView software Managed Device license – 10,000-pack
DSV4-DCP	DSView software add-on - DCP integration
DSV4-WSK	DSView software Web Services API kit

Enterprise IT  
Infrastructure Solutions  
for Data Center  
Capacity Management  
and Planning:  
Vertiv™ Avocent®  
Data Center Planner

If your customer's future plans include business growth with more effective and efficient data center capacity planning and management, then they will need greater IT agility.

Data center managers need a single source of truth of what is currently in their data center, and the impact of future changes, to enable them to be agile in meeting the changing business demands.

Powerfully visualise & document the entire data center

Vertiv Avocent Data Center Planner is a powerful a user-friendly software solution enabling the user to plan, document and visualize the entire data center infrastructure. With end-to-end device connection visualization and power usage information included, Vertiv Avocent Data Center Planner provides the most realistic, current-state view of your physical infrastructure. With Vertiv Avocent Data Center Planner, you will gain real-world insight to enhance planning accuracy and rapidly implement changes.

Part Number	Description
DCP-L1-49-V040	Level 1 Perpetual License for 1-49 Assets
DCP-L2-99-V040	Level 2 Perpetual License for 50-99 Assets
DCP-L3-249-V040	Level 3 Perpetual License for 100-249 Assets
DCP-L4-999-V040	Level 4 Perpetual License for 250-999 Assets
DCP-L5-1249-V040	Level 5 Perpetual License for 1000-1249 Assets
DCP-L6-2499-V040	Level 6 Perpetual License for 1250-2499 Assets
DCP-L7-3749-V040	Level 7 Perpetual License for 2500-3749 Assets
DCP-L8-5999-V040	Level 8 Perpetual License for 3750-5999 Assets
DCP-L9-12499-V040	Level 9 Perpetual License for 6000-12499 Assets
DCP-L10-25000-V040	Level 10 Perpetual License for 12500-25000 Assets

Enterprise IT  
Infrastructure Solutions  
for Data Center  
Power Management

Vertiv™ Avocent® Rack Power Manager  
You cannot control what you cannot measure.

Most organisations are trying to reduce data center energy consumption where possible. Unless the data center professional understands what is consuming the power, when and why, they are unable to make intelligent decisions on cost reduction strategies.

Vertiv Avocent Rack Power Manager gives the user the capability to monitor and measure the power consumption, the costs and the trends of a single server or of a complete data center in real time.

This enables the user to identify peaks and troughs, stranded capacity and hot spots. With this information they can better utilise and distribute the available power thereby increasing availability and reducing consumption.

Part Number	Description
RPM-BASE50	Rack Power Manager software base pack - 1 hub, 50 Rack PDU's
RPM-BASE100	Rack Power Manager software base pack - 1 hub, 100 Rack PDU's
RPM-BASE250	Rack Power Manager software base pack - 1 hub, 250 Rack PDU's
RPM-BASE500	Rack Power Manager software base pack - 1 hub, 500 Rack PDU's
RPM-BASE1000	Rack Power Manager software base pack - 1 hub, 1 Spoke 1,000 Rack PDU's
RPM-BASE2500	Rack Power Manager software base pack - 1 hub, 4 spokes, 2,500 Rack PDU's
RPM-SPOKE	Rack Power Manager spoke add-on license
RPM-PDU25	Rack Power Manager software 25 PDU add-on license
RPM-PDU50	Rack Power Manager software 50 PDU add-on license
RPM-PDU100	Rack Power Manager software 100 PDU add-on license
RPM-PDU250	Rack Power Manager software 250 PDU add-on license
RPM-PDU500	Rack Power Manager software 500 PDU add-on license
RPM-WSK	Rack Power Manager Web services API Kit w/ 5 hours Tech Support
RPM-DCP	RPM INTEGRATION WITH DCP

# Contact Us

## Vertiv United Kingdom

TOR, Saint-Cloud Way, Maidenhead SL6  
8BN, United Kingdom  
Ph. +44 (0) 23 8061 0311  
Fax +44 (0) 238061 0852  
[emea.partnermarketing@vertiv.com](mailto:emea.partnermarketing@vertiv.com)

## Vertiv Germany

Vertiv GmbH  
Lehrer-Wirth-Str. 4  
D - 81829 München  
Ph. + 49- 89 -90 50 07 - 0  
Fax + 49- 89- 90 50 07 - 37  
[DACH.Channel@vertiv.com](mailto:DACH.Channel@vertiv.com)

## Vertiv Austria

Modecenterstrasse 22,  
1030 Wien  
Ph. +43 1 33189 0  
[emea.partnermarketing@vertiv.com](mailto:emea.partnermarketing@vertiv.com)

## Vertiv Switzerland

Vertiv Infrastructure AG  
Bruggacherstrasse 16  
8117 Fällanden  
Ph. +41 44 806 54 54  
Fax: +41 44 806 54 64  
Service 24/7: +41 44 456 50 60  
[emea.partnermarketing@vertiv.com](mailto:emea.partnermarketing@vertiv.com)

## Vertiv France

Bâtiment Liège  
1 place des Etats-Unis - 94150 Rungis  
Ph. +33 1 48 84 40 90  
[emea.partnermarketing@vertiv.com](mailto:emea.partnermarketing@vertiv.com)

## Vertiv Italy

Via Gioacchino Rossini, 6  
20098 - San Giuliano Milanese - Milano  
Ph. +39 02 982501  
Fax +39 02 98250273  
[emea.partnermarketing@vertiv.com](mailto:emea.partnermarketing@vertiv.com)

## Vertiv Spain

Edificio Oficor C/ Proción 1-3  
28023 Madrid  
Ph. +34 91 414 00 30  
Fax +34 91 662 37 76  
[emea.partnermarketing@vertiv.com](mailto:emea.partnermarketing@vertiv.com)

## Vertiv Benelux BV (Belgium, Netherlands & Luxembourg)

Druivenstraat 3  
Breda 4816 KB - The Netherlands  
Ph. +31 76 578 1600  
Fax: +31 76 578 1625  
[emea.partnermarketing@vertiv.com](mailto:emea.partnermarketing@vertiv.com)

## Vertiv Poland

Ul. Szturmowa 2A  
PL - 02-678 Warszawa  
Ph.+48 22 607 20 84  
Fax +48 22 458 92 61  
[emea.partnermarketing@vertiv.com](mailto:emea.partnermarketing@vertiv.com)

## Vertiv Russia Belarus

115035, Россия, Москва,  
Космодамианская наб., д.52, стр.5, эт.13  
T: +7 (495) 755-7799  
[ru.partners@vertiv.com](mailto:ru.partners@vertiv.com)

## Vertiv Turkey

Şerifali Mah. Turcan Cad. No:60 34775  
Ümraniye-İstanbul  
Ph. +90 216 586 79 00  
Fax +90 216 586 79 79  
[emea.partnermarketing@vertiv.com](mailto:emea.partnermarketing@vertiv.com)

## Vertiv UAE

**(MEA Head Office)**  
Vertiv Middle East DMCC , 801 One-JLT,  
Jumeirah Lake Towers, Dubai PO Box  
337122, United Arab Emirates  
Ph. +971 4 510 4200w  
[emea.partnermarketing@vertiv.com](mailto:emea.partnermarketing@vertiv.com)

## Vertiv Nigeria

**(Central Africa Region)**  
Plot 16/17 Water Corporation Drive  
| Victoria Island | Lagos, Nigeria  
Ph. +234 1 342 9073  
Fax +234 1 280 2271  
[emea.partnermarketing@vertiv.com](mailto:emea.partnermarketing@vertiv.com)

## Vertiv South Africa (Southern Africa Region)

Building 17, Thornhill Office Park, 94  
Bekker Road, Midrand 1686, South Africa,  
Ph. +27 11 284 9777  
Fax +27 11 608 0177  
[emea.partnermarketing@vertiv.com](mailto:emea.partnermarketing@vertiv.com)

## Vertiv Morocco

**(North West Africa Region)**  
Zénith Milénium Immeuble 2, sidi Maarouf,  
20190 Casablanca, Morocco  
+212 661 932 550  
[emea.partnermarketing@vertiv.com](mailto:emea.partnermarketing@vertiv.com)

## Vertiv Kenya

Baobab Suite, 1st Floor,  
Riverside Green Suites,  
Riverside Drive,  
Nairobi, Kenya.  
Ph. +254716486032  
[emea.partnermarketing@vertiv.com](mailto:emea.partnermarketing@vertiv.com)

