

Vertiv™ Partner Program

Join the Vertiv Partner Program. Provide More Solutions.
Gain Unparalleled Support. Maximise Your Profits.

Register or Login here:

Partners.Vertiv.com



Vertiv Incentive Program (VIP):

Vertiv resellers now can earn additional rewards each time they sell.

Vertiv Incentive Program

Sell, Earn, Repeat.

More info: Vertiv-VIP.com



Channel Product Selector

UPS, Accessories, PDU, Rack, Monitoring: use our tool to determine the best possible solution and share it with selected distributors. Available in 7 languages and as a mobile app.

<https://www.vertiv.com/en-emea/Interactive-Product-Selector>

Tech Support

Our Commitment to your daily Business, provided by our World Wide Tech support available in 5 Languages (GB, ES, FR, IT, DE).
support.smallups.pdu@vertiv.com

Liebert Technical Support:

Toll-free 00-80011554499 - Toll +39 02 98250222

liebert.upstech@vertiv.com

Vertiv Avocent Customer Care:

support.Avocent@vertiv.com

<https://www.vertiv.com/en-emea/Avocent-Support-Contacts>

EMEA Channel Support

In case of questions about the Vertiv Partner Program, available incentives or promotions or to find the right sales contact for your region, please reach out to EMEA.PartnerMarketing@vertiv.com.

We are more than happy to help!

Grow your Business!

Your end users can't afford for their critical infrastructure to go down. At Vertiv, we have built our capabilities on delivering reliable facilities and IT Infrastructure solutions that assure business-critical continuity.

What can Vertiv's portfolio bring to end users?

Optimisation of their critical infrastructure - we, as Vertiv, promise to **maximise the availability, capacity and efficiency of their critical infrastructure.**

We can provide the ideal and complete solution for their business: our product range brings together everything you need in order to have their business up and running at any moment, and at the same time supply quicker and easier access to the infrastructure.

Vertiv provides hardware and software products that offer a complete solution for infrastructure management and, besides having all these products under one roof, we also have the right people you need: **IT experts, sales consultants and technical support teams** - an entire team focused on the challenges brought by your customer.

Therefore, if your clients are looking to optimise their infrastructure by investing in one organisation, rest assured that Vertiv is a sound choice.



Uninterruptible Power Supplies (UPS)

Vertiv delivers a full range of uninterruptible power supplies (UPS) and power distribution units (PDU), from individual data centre solutions to integrated systems that keep network closets, computer rooms and data centre infrastructure up and running.

This wide range of power capacities will bring you not only greater margins but also significant upselling opportunities.

Three-Phase UPS

Liebert® EXS

Liebert® ITA2

Liebert® NXC



Further enterprise UPS solutions from Vertiv

Vertiv also offers a complete range of efficient, reliable Three-phase UPS systems with up to 60 KVA that can be configured to meet the specific needs of your customers critical applications.

For more information on our Three-phase UPS portfolio or your individual project support please contact your Vertiv Channel Account Manager or email us at

UKIE.channel@vertivco.com.

You can also find more information on our Website Vertiv.com.

Three-Phase UPS Liebert® EXS



Optimised and Integrated Three-Phase UPS Solution with High Efficiency Power Protection

10000-15000-20000-30000-40000 VA

Key Benefits

- Output power factor up to 1
- Double conversion efficiency up to 96.2%
- ECO mode efficiency up to 99%
- Input current total harmonic distortion correction (THDi) < 3%
- Battery charger up to 13 A
- Integrated manual bypass
- Integrated input and output breakers/switches
- Integrated parallel load bus and synchronisation port (LBS)

Applications

- Banking, Financial and Insurance
- Data Centre/Colocation/Hosting
- Government
- Manufacturing
- Healthcare

Technology:	Double-Conversion, VFI-SS-111 according to IEC62040-3
Connections:	Three -phase or Single-phase output connection (single-phase output for 10-20kVA only), Power cables connection from the rear
Communications:	USB port, SNMP/WEB, Modbus and Relay Card optional, Vertiv LIFE™ Services compatible
Options:	Multiple internal battery configurations, External Battery Cabinets, Battery shelves, Battery temperature compensation kit, Parallel and Dual Bus cables, Communication cards

Model	Power Rating	Internal battery configuration	Runtime*	Dimensions WxDxH	Weight
EXS101C0010A0A0	10 KVA	1x32x9 Ah	11 mins	335 x 650 x 1300 mm	185 Kg
EXS101C0020A0A0	10 KVA	2x32x9 Ah	28 mins	335 x 650 x 1300 mm	285 Kg
EXS102C0030A0A0	10 KVA	3x32x9 Ah	50 mins	577 x 650 x 1300 mm	435 Kg
EXS102C0040A0A0	10 KVA	4x32x9 Ah	64 mins	577 x 650 x 1300 mm	535 Kg
EXS151C0010A0A0	15 KVA	1x32x9 Ah	6 mins	335 x 650 x 1300 mm	185 Kg
EXS151C0020A0A0	15 KVA	2x32x9 Ah	17 mins	335 x 650 x 1300 mm	285 Kg
EXS152C0030A0A0	15 KVA	3x32x9 Ah	28 mins	577 x 650 x 1300 mm	435 Kg
EXS152C0040A0A0	15 KVA	4x32x9 Ah	42 mins	577 x 650 x 1300 mm	535 Kg
EXS201C0010A0A0	20 KVA	1x32x9 Ah	5 mins	335 x 650 x 1300 mm	185 Kg
EXS201C0020A0A0	20 KVA	2x32x9 Ah	11 mins	335 x 650 x 1300 mm	285 Kg
EXS202C0030A0A0	20 KVA	3x32x9 Ah	19 mins	577 x 650 x 1300 mm	435 Kg
EXS202C0040A0A0	20 KVA	4x32x9 Ah	28 mins	577 x 650 x 1300 mm	535 Kg
EXS301C0021A0A0	30 KVA	2x32x9 Ah	6 mins	440 x 750 x 1600 mm	400 Kg
EXS301C0031A0A0	30 KVA	3x32x9 Ah	10 mins	440 x 750 x 1600 mm	500 Kg
EXS301C0041A0A0	30 KVA	4x32x9 Ah	14 mins	440 x 750 x 1600 mm	600 Kg
EXS401C0031A0A0	40 KVA	3x32x9 Ah	7 mins	440 x 750 x 1600 mm	500 Kg
EXS401C0041A0A0	40 KVA	4x32x9 Ah	10 mins	440 x 750 x 1600 mm	600 Kg

*The battery runtime is indicative and is meant for new and fully charged batteries

*Longer runtimes are available with dedicated external battery cabinets options, contact us for further informations

Three-Phase UPS Liebert® ITA2



Remarkable Efficiency and Flexibility Characterise the Liebert® ITA2 UPS Family

10000-15000-20000 VA

Key Benefits

- Rack-tower design for installation flexibility
- Able to deliver both three-phase and single-phase output
- Ultra-high power density
- 0.99 input power factor for better grid or generator compatibility
- Unity output power factor for additional power availability
- Efficiency in double conversion up to 96.2%
- ECO mode operation with efficiency up to 99% and remarkable energy saving performance
- Powerful charging capability with consequent reduction of the battery recharging time
- Programmable dry contacts
- Programmable output power terminals

Applications

- Small computer rooms
- Branch offices
- Servers
- Network computers and peripherals
- Storage device
- VoIP

Technology:	Double-Conversion, VFI-SS-111 according to IEC62040-3
Connections:	Three -phase or Single-phase output connection, Terminal block on the back of UPS
Communications:	USB port, SNMP/WEB, Modbus and Relay Card optional, Vertiv LIFE™ Services compatible
Options:	Battery Module, Power Distribution Module, Parallel and Dual Bus cables, Rack installation kit, Battery temperature compensation kit, Intellislot extender

Model	Power Rating	External battery configuration	Runtime*	Dimensions WxDxH	Total Weight
ITA2101A0000A00	10 KVA	-	-	435 x 500 x 130 mm	23 Kg
ITA2101A0000A00 + 2x U16-09C1	10 KVA	1x32x9 Ah	12 mins	435 x 500 x 390 mm	125 Kg
ITA2101A0000A00 + 4x U16-09C1	10 KVA	2x32x9 Ah	30 mins	435 x 500 x 650 mm	227 Kg
ITA2151A0000A00	15 KVA	-	-	435 x 500 x 130 mm	23 Kg
ITA2151A0000A00 + 2x U16-09C1	15 KVA	1x32x9 Ah	6 mins	435 x 500 x 390 mm	125 Kg
ITA2151A0000A00 + 4x U16-09C1	15 KVA	2x32x9 Ah	18 mins	435 x 500 x 650 mm	227 Kg
ITA2151A0000A00 + 6x U16-09C1	15 KVA	3x32x9 Ah	30 mins	435 x 500 x 910 mm	329 Kg
ITA2201A0000A00	20 KVA	-	-	435 x 500 x 130 mm	23 Kg
ITA2201A0000A00 + 4x U16-09C1	20 KVA	2x32x9 Ah	12 mins	435 x 500 x 650 mm	227 Kg
ITA2201A0000A00 + 6x U16-09C1	20 KVA	3x32x9 Ah	21 mins	435 x 500 x 910 mm	329 Kg
ITA2201A0000A00 + 8x U16-09C1	20 KVA	4x32x9 Ah	30 mins	435 x 500 x 1170 mm	431 Kg

* The battery runtime is indicative and is meant for new and fully charged batteries

*Longer runtimes are available with the use of additional external battery modules, contact us for further information.

Three-Phase UPS Liebert® NXC



Compact and Reliable Power in a Fully Integrated Packaged Solution

60000 VA

Key Benefits

- Output power factor up to 0.9
- Double conversion efficiency up to 95.5%
- ECO mode efficiency up to 98%
- Input current total harmonic distortion correction (THDi) < 5%
- Battery charger up to 7.5 kW
- Integrated manual bypass
- Integrated input and output breakers/switches
- Integrated parallel load bus and synchronisation port (LBS)

Applications

- Banking, Financial and Insurance
- Data Centre/Colocation/Hosting
- Government
- Manufacturing
- Healthcare
- Transportation
- Retail and Wholesale

Technology:	Double-Conversion, VFI-SS-111 according to IEC62040-3
Connections:	Power cables connection from the bottom
Communications:	USB port, SNMP/WEB, Modbus and Relay Card optional, Vertiv LIFE™ Services compatible
Options:	Multiple internal battery configurations, External Battery Cabinets, Battery shelves, Battery temperature compensation kit, Parallel and Dual Bus cables, Communication cards

Model	Power Rating	Internal battery configuration	Runtime*	Dimensions WxDxH	Weight
LI60601B0051A10	60 KVA	1x32x34 Ah	6 mins	600 x 850 x 1600 mm	620 Kg
LI60601B0071A10	60 KVA	2x40x34 Ah	10 mins	600 x 850 x 1600 mm	715 Kg

* The battery runtime is indicative and is meant for new and fully charged batteries.

*Longer runtimes are available with dedicated external battery cabinets options, contact us for further information.

Integrated Rack Solutions

Optimising technology and performance needs for IT applications. Our integrated platform provides standard and specific, custom solutions.

Our family of racks enables cable management, power distribution, ventilation or sophisticated precision air conditioning solutions. Each of our products meets the strictest standards for durability and safety. Contact the Vertiv team for modular designs for data centres of any type or dimensions.

Single Phase UPS

The critical systems that sustain your business operations can't go down.

Vertiv supports you in improving your uptime with a full range of innovative Liebert® uninterruptible power supplies (UPS) and future-proof, integrated UPS systems, that will cover the backup power needs of your IT infrastructure, from small computer rooms at the network edge to enterprise and hyperscale data centres. Discover the best uninterruptible supplies to protect your application.

Single Phase UPS Liebert® GXT5



Intelligent and Efficient UPS Protection 750VA - 20kVA

Key Benefits

- High output PF=1.0
- Full color graphic LCD display with gravity sensing
- Controllable output power sockets
- External battery cabinets with auto-detection
- Integrated POD and maintenance bypass (detachable, standard for small line only from 5-10kVA)
- Wide range of power ratings to answer any possible power requirement
- Extreme flexibility with parallel or redundant operation capability
- Battery health status and replacement date prediction
- Remote management, update and configuration
- Optimised thermal management and variable speed fan
- High efficiency up to 95% in on-line mode
- Even higher efficiency up to 98% in Active ECO mode
- Programmable output sockets for optimum battery usage

Applications

- Business and Education Communications & Network systems
- Communications and DAS
- Network/Wiring Closets
- Edge Processing – Retail, Finance, Education

Technology:	Online Double Conversion, VFI according to IEC62040-3
Connections:	Terminal block (input and output) + IEC plugs (output only)
Communications:	SNMP/WEB, Modbus and Relay Card optional, Vertiv LIFE™ Services compatible Battery Cabinets
Options:	Communication cards, Rack mount kits, Warranty extensions available

Model	Power Rating	Runtime*	Outputs Outlets	Dimensions WxDxH	Weight	Warranty Extension +1Y	Warranty Extension +3Y
GXT5-750IRT2UXLE	750 VA / 750 W	21,5 min	8 (C13)	430 x 400 x 85	21 kg	PF1YR-MU-13	PF3YR-MU-13
GXT5-1000IRT2UXLE	1000 VA / 1000 W	15 min	8 (C13)	430 x 400 x 85	21 kg	PF1YR-MU-13	PF3YR-MU-13
GXT5-1500IRT2UXLE	1500 VA / 1500 W	16 min	8 (C13)	430 x 470 x 85	21 kg	PF1YR-MU-14	PF3YR-MU-14
GXT5-2000IRT2UXLE	2000 VA / 2000 W	9 min	8 (C13)	430 x 470 x 85	21 kg	PF1YR-MU-14	PF3YR-MU-14
GXT5-3000IRT2UXLE	3000 VA / 3000 W	9 min	1(C19) 6 (C13)	430 x 540 x 85	28,2 kg	PF1YR-MU-15	PF3YR-MU-15
GXT5-5000IRT5UXLE	5000 VA / 5000 W	18,5 min	Hardwire, 2 (C19), 6 (C13)	430 x 630 x 217	70,8 kg	PF1YR-MU-09	PF3YR-MU-09
GXT5-6000IRT5UXLE	6000 VA / 6000 W	14,5 min	Hardwire, 2 (C19), 6 (C13)	430 x 630 x 217	70,8 kg	PF1YR-MU-10	PF3YR-MU-10
GXT5-8000IRT5UXLE	8000 VA / 8000 W	9,5 min	Hardwire, 4 (C19), 4(C13)	430 x 630 x 217	70,8 kg	PF1YR-MU-11	PF3YR-MU-11
GXT5-10KIRT5UXLN	10000 VA / 10000 W	7 min	Hardwire, 4 (C19), 4(C13)	430 x 630 x 217	70,8 kg	PF1YR-MU-12	PF3YR-MU-12
GXT5-16KIRT9UXLE	16000 VA / 16000 W	9,5 min	Hardwire	430x630x394	135 kg	PF1YR-MU-16	PF3YR-MU-16
GXT5-20KIRT9UXLE	20000 VA / 20000 W	7 min	Hardwire	430x630x394	135 kg	PF1YR-MU-17	PF3YR-MU-17

External Battery Cabinets:

GXT5-EBC36VRT2UE (for 750VA , 1000VA)	430x630x261	112 kg		
GXT5-EBC48VRT2UE (for 1500VA , 2000VA)	430 x 370 x 85	21 kg	-	-
GXT5-EBC72VRT2UE (for 3000VA)	430 x 497 x 85	28,5 kg	-	-
GXT5-EBC192VRT3UE (for 5 - 10kVA)	430 x 602 x 85	39 kg	-	-
GXT5-EBC384VRT6U (for 16 and 20kVA)	430 x 630 x 130	57,6 kg	-	-
RDU101 SNMP-Communication card				

* Runtime 50% load

Single Phase UPS Vertiv™ Edge UPS



Superior Power Protection for Edge Applications

500 - 3000 VA 230 V

Key Benefits

- Line interactive (VI) UPS technology for professional applications
- Complete product family with ratings from 500 VA up to 3 kVA
- High output power factor (0.9)
- Controllable sockets for load management during outages
- Installation Flexibility with 1U, 2U, 3U and tower form factor versions
- Colour LCD display
- Same external battery cabinets compatible with Vertiv™ GXT5
- Railkits included in the UPS
- Up to 30% more runtime like competitive units
- Easy integration in management tools via SNMP, Modbus, BACNET, dry-contacts
- Battery deep discharge protection for extended battery life
- Configurable “Green function” to disable output at small loads

Applications

- Banking, Financial and Insurance
- Broadcast and Entertainment
- Education
- Fire/Alarm/Security
- Government
- Healthcare
- Manufacturing
- Retail and Wholesale
- Telecom
- Transportation

Technical Specifications

Model	Power Rating	Runtime (50% load)	Output Outlets	Dimensions	Unit Weight	Warranty Extension 1Y	Warranty Extension 3Y
EDGE-750IMT	750VA / 675W	17 min	5 (C13)	145 x 370 x 220 mm	11,2 kg	PF1YR-MU-18	PF3YR-MU-18
EDGE-1000IMT	1000VA / 900W	15,5 min	6 (C13)	145 x 370 x 220 mm	11,8 kg	PF1YR-MU-18	PF3YR-MU-18
EDGE-1500IMT	1500VA / 1350W	17,3 min	6 (C13)	145 x 480 x 220 mm	18,2 kg	PF1YR-MU-18	PF3YR-MU-18
EDGE-500IRM1U	500VA / 450W	15 min	6 (C13)	438 x 380 x 44 mm	11,3 kg	PF1YR-MU-18	PF3YR-MU-18
EDGE-1000IRM1U	1000VA / 900W	15 min	6 (C13)	438 x 480 x 44 mm	16,1 kg	PF1YR-MU-19	PF3YR-MU-19
EDGE-1500IRM1U	1500VA / 1350W	15,1 min	6 (C13)	438 x 600 x 44 mm	22,8 kg	PF1YR-MU-19	PF3YR-MU-19
EDGE-1500IRT2UXL	1500VA / 1350W	17,3 min	6 (C13)	438 x 510 x 88 mm	21,5 kg	PF1YR-MU-19	PF3YR-MU-19
EDGE-2200IRT2UXL	2200VA / 1980W	14,1 min	1 (C19), 6 (C13)	438 x 630 x 88 mm	26,7 kg	PF1YR-MU-20	PF3YR-MU-20
EDGE-3000IRT2UXL	3000VA / 2700W	16,2 min	1 (C19), 6 (C13)	438 x 630 x 88 mm	34,9 kg	PF1YR-MU-20	PF3YR-MU-20
EDGE-3000IRT3UXL	3000VA / 2700W	16,2 min	1 (C19), 9 (C13)	438 x 485 x 132 mm	36,4 kg	PF1YR-MU-20	PF3YR-MU-20
External Battery Cabinets for Edge							
GXT5-EBC48VRT2U (for EDGE-1500IRT2UXL)				430 x 497 x 85 mm	28,5 kg		
GXT5-EBC72VRT2U (for EDGE-2200IRT2UXL, EDGE-3000IRT2UXL, EDGE-3000IRT3UXL)				430 x 602 x 85 mm	39 kg		

Single Phase UPS Liebert® APS



Modular Power Protection for Immediate and Future Load Demands

5000-10000-15000-20000 VA

Key Benefits

- 5 kVA / 4.5 kW single phase output power modules (output PF=0.9)
- Site configurable as single phase or three phase input
- Scalable up to 20 kVA+10 kVA redundancy
- Stand alone or rack mountable
- Hot-wappable power and battery modules
- Intelligent battery modules with automatic disconnection for anomalous events
- Double conversion efficiency: 92%
- Efficiency in ECO mode up to 98%
- Long life batteries (8-10 years design life)
- 1.8 A Charging Current per module
- Optional 10 A charger module
- Input: Terminal blocks
- Output: Terminal blocks, or output sockets with the optional PODs

Applications

- Mission critical workstations
- Small computer rooms
- Network equipment
- Telecommunications
- Finance requiring maximum availability

Don't forget to check your Upsell Opportunities!

Do your Clients need any complementary products?
See: **Vertiv™ Avocent® Remote Management Solutions**

Technology:	Online Double Conversion, VFI according to IEC62040-3
Connections:	Terminal block (input and output)
Communications:	SNMP/WEB card and Relay Card optional, Vertiv LIFE™ Services compatible
Options:	Battery Cabinets, redundant Power Modules, Charger, Rack mount kit, Power Distribution PODs, Seismic Floor Brackets

Model	Power Rating	Internal battery configuration	Runtime	Output	Dimensions HxWxD (mm)	Weight
AS2A0NCLMNNX000	5000VA/4500W	1 string x 12 batteries x 9Ahr	13 min	Terminals	970x440x850	189 kg
AS2A0NCMMNNX000	5000VA/4500W	2 string x 12 batteries x 9Ahr	30 min	Terminals	970x440x850	222 kg
AS2A0NCNMNNX000	5000VA/4500W	3 string x 12 batteries x 9Ahr	53 min	Terminals	970x440x850	255 kg
AS2A1NCPMNNX000	5000VA/4500W	4 string x 12 batteries x 9Ahr	82 min	Terminals	970x440x850	296 kg
AS2B0NCMMNNX000	10000VA/9000W	2 string x 12 batteries x 9Ahr	13 min	Terminals	970x440x850	231 kg
AS2B0NCNMNNX000	10000VA/9000W	3 string x 12 batteries x 9Ahr	23 min	Terminals	970x440x850	264 kg
AS2B0NCPMNNX000	10000VA/9000W	4 string x 12 batteries x 9Ahr	30 min	Terminals	970x440x850	296 kg
AS2B0NCRMNNX000	10000VA/9000W	6 string x 12 batteries x 9Ahr	53 min	Terminals	970x440x850	362 kg
AS2C0NCNMNNX000	15000VA/13500W	3 string x 12 batteries x 9Ahr	13 min	Terminals	970x440x850	272 kg
AS2C0NCQMNNX000	15000VA/13500W	5 string x 12 batteries x 9Ahr	25 min	Terminals	970x440x850	337 kg
AS2C0NCRMNNX000	15000VA/13500W	6 string x 12 batteries x 9Ahr	30 min	Terminals	970x440x850	370 kg
AS2D0NCPMNNX000	20000VA/18000W	4 string x 12 batteries x 9Ahr	13 min	Terminals	970x440x850	312 kg
AS2D0NCRMNNX000	20000VA/18000W	6 string x 12 batteries x 9Ahr	23 min	Terminals	970x440x850	378 kg
AS7EBC2CCLBX000	External battery cabinet with 2 battery strings				970x440x712	132 kg
AS7EBC6CCLBX000	External battery cabinet with 6 battery strings				970x440x712	253 kg

Runtime in minutes at 50% load

Single Phase UPS
Liebert® GXT3



Reliable On-Line UPS Protection In A Compact Package
GXT3-10000T230

Key Benefits

- 0.9 Power Factor
- LCD display in multiple languages
- Automatic frequency detection
- User replaceable hot-swappable internal batteries
- Additional runtime with additional battery cabinets
- Vertiv™ IntelliSlot™ communications port
- Includes Windows-based configuration program
- Built-in USB communications
- Separate bypass input available
- Capable for operation as 3-phase or 1-phase input
- Emergency Power Off (EPO)
- Parallelable up to 2+1 units
- Wider input voltage window minimises battery use
- Internal automatic and manual bypass (integrated)
- Standard two-year replacement warranty
- Compact footprint
- Battery cut-off voltage to prevent from overdischarge of batteries

Applications

- LAN & WAN Servers
- Network Equipment
- IP Telephony Deployments
- Office Telecommunications systems
- SDN & frame relay applications
- Test and Diagnostic Equipment
- Banks
- Micro Processor-controlled Equipment

Technology: Online Double Conversion, VFI according to IEC62040-3
Connections: Terminal block (input and output)
Communications: SNMP/WEB, Modbus and Relay Card optional, Vertiv LIFE™ Services available
Options: Battery Cabinets, Communication cards

Model	Power Rating	Runtime*	Outputs Outlets	Dimensions WxDxH	Weight	Warranty Extension +1Y	Warranty Extension +3Y
GXT3-10000T230	10000VA - 9000W	11 mins	terminal block	300x675x800 mm	105 kg	PF1YR-MU-08	PF3YR-MU-08
GXT3-10000T220	10000VA - 9000W	11 mins	terminal block	300x675x800 mm	140 kg	-	-

GXT3-10000T220 is only UL/cUL approved (not CE)

GXT3-240TBATT CE - Extended Battery Cabinet for GXT3-10000T230, GXT3-10000T220				300x675x800 mm	110 kg	-	-
---	--	--	--	----------------	--------	---	---

* Runtime 50% load

Single Phase UPS Liebert® GXT RT+ UPS



Essential, Affordable UPS for High Performance Protection

GXT RT+ 1000IRT2UXL, 1500IRT2UXL, 2000IRT2UXL, 3000IRT2UXL

Key Benefits

- On-line double conversion UPS for mission-critical applications
- Output power factor of 0.9 is higher than majority of comparable competitor models
- Compact dimensions (2Us height) including batteries
- Flexible rack/tower form factor allows for flexible installation
- Simplified installation with at-a-glance configuration information on a user-friendly liquid crystal display (LCD)
- High efficiency ECO mode and lower TCO
- Smart battery charger design
- Flexible communications through RS232 or USB ports
- Slot available for optional SNMP/web monitoring cards
- Available in 1-1.5-2-3 kVA ratings
- Wide input voltage operation (120-300V AC)
- Rack mounting kit included

Applications

- IT
- Finance
- Telecom
- Industrial
- Education
- Government
- Retail
- Edge

Technical Specifications - 1U Rack Models

Model	Power Rating	Runtime (50% load)	Output Outlets	Dimensions	Unit Weight	Warranty Extension 1Y	Warranty Extension 3Y
GXTRT-1000IRT2UXL	1000VA / 900W	9 min	6 (C13)	438 x 310 x 88 mm	11 kg	PF1YR-MU-21	PF3YR-MU-21
GXTRT-1500IRT2UXL	1500VA / 1350W	9 min	6 (C13)	438 x 462 x 88 mm	14,5 kg	PF1YR-MU-21	PF3YR-MU-21
GXTRT-2000IRT2UXL	2000VA / 1800W	9 min	6 (C13)	438 x 462 x 88 mm	18,2 kg	PF1YR-MU-22	PF3YR-MU-22
GXTRT-3000IRT2UXL	3000VA / 2700W	11 min	1 (C19), 6 (C13)	438 x 632 x 88 mm	27,6 kg	PF1YR-MU-22	PF3YR-MU-22

External Battery Cabinets for RT+

GXTRT-EBC24VRT2U (for GXTRT-1000IRT2UXL)				410 x 438 x 88 mm	12,5 kg		
GXTRT-EBC36VRT2U (for GXTRT-1500IRT2UXL)				410 x 438 x 88 mm	17,2 kg		
GXTRT-EBC48VRT2U (for GXTRT-2000IRT2UXL)				510 x 438 x 88 mm	23,3 kg		
GXTRT-EBC72VRT2U (for GXTRT-3000IRT2UXL)				630 x 438 x 88 mm	41,5 kg		

UPS for Uninterrupted Power

Single Phase UPS Liebert® GXT MT +



Compact Tower UPS for High Performance Power Protection 1000-2000-3000 VA

Key Benefits

- Double conversion on-line technology
- Compact tower design
- 0.8 output power factor
- Ultra wide input voltage range
- Automatic frequency detection
- High input power factor & low THDi
- Emergency power off (EPO)
- Energy saving mode (ECO) for high efficiency
- LCD display for operational convenience and status/fault information
- Multiple AC output interfaces via Schuko and IEC standard sockets
- Multiple communications options available through USB/RS232, and optional via volts-free contacts and SNMP cards

Applications

- VoIP equipment
- Small office networks
- Computer rooms
- Process automation equipment
- Network storage devices

Not suitable for UK Market

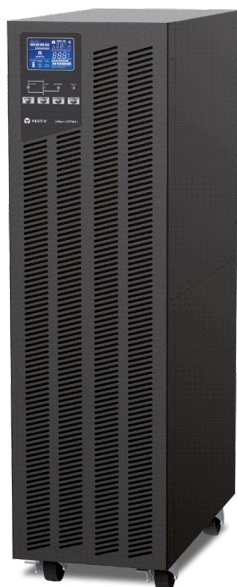


Technology: Online Double Conversion VFI according to IEC62040-3
Connections: IEC input and IEC+Schuko plugs (output power terminals only for 3kVA)
Communications: Communication cards RS232, USB, or optional SNMP/WEB or volts-free cards

Model	Power Rating	Runtime*	Outputs Outlets	Dimensions HxWxD	Weight	Warranty Extension +1Y
LI34101CT32	1000VA - 800W	9 mins	3xIEC C13+ 1 x Schuko	223x145x282 mm	9.7 kg	-
LI34111CT32	2000VA - 1600W	10 mins	3xIEC C13+ 1 x Schuko	238x145x397 mm	17.3 kg	-
LI34121CT32	3000VA - 2400W	11 mins	3xIEC C13+ 2 x Schuko +Terminals	336x190x421mm	27.5 kg	-

* Runtime 50% load

Single Phase UPS Liebert® GXT MT +



Compact Tower UPS for High Performance Power Protection 6000-10000 VA

Key Benefits

- Double conversion on-line technology
- 0.8 output power factor
- Multiple communication options or network and volt-free contacts card (optional)
- LCD display and intuitive synoptic on the front panel for easy reading of UPS status
- Wide input voltage range
- Input circuit breaker
- Maintenance bypass
- Automatic frequency detection
- Minimized installation time and costs
- Small and compact footprint and size

Applications

- VoIP equipment
- Small office networks
- Computer rooms
- Process automation equipment
- Network storage devices

Not suitable for UK Market



Technology: Online Double Conversion VFI according to IEC62040-3
Connections: Terminals block (input and output)
Communications: RS232, USB, optional SNMP/WEB or volts-free card
Options: Communication cards

Model	Power Rating	Runtime*	Outputs Outlets	Dimensions HxWxD	Weight	Warranty Extension +1Y
LI34141CT32	6000VA - 4800W	12 mins	Terminals	688x190x369 mm	72 kg	-
LI34151CT32	10000VA - 8000W	7.9 mins	Terminals	688x190x442 mm	82 kg	-

* Runtime 50% load

Single Phase UPS Liebert® PSA



Performance Power Protection For PC And Office Equipment 500-650-1000-1500 VA

Key Benefits

- Available in four ratings: 500, 650, 1000 and 1500VA
- 3 to 6 battery-backed UPS sockets, depending on model size
- One to two surge-only sockets, differentiated by colour
- USB cable included
- User replaceable batteries
- Up to 4 minutes of battery backup time at full load
- Full sequenced battery testing to ensure batteries are available when needed
- Advance early warning of UPS shutdown
- 3 years standard warranty
- RJ-45 port for data line surge protection

Applications

- Professional Desktop PC
- Professional Workstations
- Small Routers, Bridges & Hubs
- Point-of-Sale Terminals
- Other Sensitive Electronics

Technology:	Line Interactive, VI according to IEC62040-3
Connections:	IEC plugs (input and output)
Communications:	USB port (all units)

Model	Power Rating	Runtime*	Outputs Outlets	Dimensions HxWxD	Weight	Warranty Extension +1Y
PSA500MT3-230U	500VA - 300W	12 mins	(3+1) IEC320-C13	171x95x356 mm	5.4 kg	PF1YR-MU-01
PSA650MT3-230U	650VA - 390W	8.5 mins	(3+1) IEC320-C13	171x95x356 mm	5.9 kg	PF1YR-MU-01
PSA1000MT3-230U	1000VA - 600W	12 mins	(6+2) IEC320-C13	234x147x360 mm	9.5 kg	PF1YR-MU-02
PSA1500MT3-230U	1500VA - 900W	10.5 mins	(6+2) IEC320-C13	234x147x360 mm	11.6 kg	PF1YR-MU-04

* Runtime 50% load

Single Phase UPS Liebert® itON



Reliable Power Protection for Desktop Workstations

400-600-800-1000-1500-2000 VA

Key Benefits

- Automatic voltage regulator (AVR)
- Compact size
- Light weight
- Easy operation
- Overload protection and alarm
- Auto re-start with AC recovery
- Fast charging
- Cold start function
- Available in ratings from 400 VA up to 2000 VA
- USB port (for 1000 VA, 1500 VA, 2000 VA)
- Flexible output power sockets combination:
 - Schuko sockets (for 400 VA, 600 VA, 800 VA)
 - Schuko and IEC sockets (for 1000 VA, 1500 VA, 2000 VA)

Applications

- Desktop PCs
- Professional workstations
- Small routers, bridges and hubs
- Point-of-sale terminals
- PBXs
- Other sensitive electronics

Not suitable for UK Market

Technology: Line interactive (VI according to IEC62040-3)
Connections: Output IEC C320-C13 and Schuko (check models)
Communications: USB port for 1000-1500-2000VA ratings

Model	Power Rating	Runtime*	Outputs Outlets	Dimensions HxWxD	Weight	Warranty Extension +1Y
LI32101CT00	400VA - 240W	6 mins	2 x Schuko	142x101x279 mm	3.6 kg	-
LI32111CT00	600VA - 360W	6 mins	2 x Schuko	142x101x279 mm	4.2 kg	-
LI32121CT00	800VA - 480W	3 mins	2 x Schuko	142x101x279 mm	4.9 kg	-
LI32131CT20	1000VA - 600W	6 mins	2 x Schuko + 2 x IEC C13	164x146x341 mm	8.0 kg	-
LI32141CT20	1500VA - 900W	5 mins	3 x Schuko + 3 x IEC C13	205x146x391 mm	11.1 kg	-
LI32151CT20	2000VA - 1200W	3 mins	3 x Schuko + 3 x IEC C13	205x146x391 mm	11.5 kg	-

* Runtime 50% load

Single Phase UPS Liebert® PSP



Best-Value Power Protection for PCs and Peripherals 500-650 VA

Key Benefits

- 3 battery-backed UPS outlets and one surge protection-only outlet differentiated by colour
- USB port and cable
- User replaceable batteries
- Up to 4 minutes of battery backup time at full load
- Protects against lightning, spikes and surges
- Full sequenced battery testing to ensure batteries are available when needed
- Advance early warning of UPS shutdown
- 3 years standard warranty
- RJ-45 port for data line surge protection

Applications

- Professional workstations
- Small routers and bridges
- Point-of-sale terminals
- Other sensitive electronics

Technology:	Offline, VFD according to IEC62040-3
Connections:	IEC plugs (input and output)
Communications:	USB (all units)

Model	Power Rating	Runtime*	Outputs Outlets	Dimensions HxWxD	Weight	Warranty Extension +1Y
PSP500MT3-230U	500VA - 300W	11 mins	(3+1) IEC320-C13	215x87x251 mm	3.9 kg	PF1UR-MU-00
PSP650MT3-230U	650VA - 390W	8 mins	(3+1) IEC320-C13	215x87x251 mm	3.9 kg	PF1UR-MU-01

* Runtime 50% load

Racks and Containment

In the modern data centre landscape, standardisation is becoming the norm. But not everywhere and not done randomly. The first place you'd want to start data centre normalisation is the racking systems and containment solutions.

Starting with flexible, easily installed, adaptable and pre-configured customised server racks and network cabinets saves you costs, footprint and it increases the performance, efficiency, and reliability of your critical infrastructure.

Let's discover the data centre custom containment solutions that will help you reach your objectives.

Racks and Containment Vertiv™ VR Rack



Rapid deployments everywhere you operate

Standardise your deployments around the world and bring them online faster with the Vertiv™ VR rack. The Vertiv VR supports a wide variety of equipment, including: servers, storage, switches, routers, PDUs, UPSs, console port servers and KVM switches.

Key Benefits

- Available in 8 standard sizes
- Full depth adjustability of the 19" rails
- Frame design allow for more than 2.5" more usable depth than similar sized racks
- Doors that have 77% perforation and can be hinged on either side
- Tool-less removable top panel has four cable entry holes allowing for up to 2000 Cat6 cables, or 60A PDU plugs
- Two dual purpose full height depth adjustable PDU / cable management brackets mounted in the zero U space with tool-less button mounting of rack PDUs, accessory mounting holes for tool-less cable management accessories, and integrated cable tie off positions
- 42U frame height that allows for the rack to pass through standard doors on casters
- Simple external baying, allows for metric baying or on 24" centres
- Split side panels with single locking slam latch allows for easy single person removal / installation

Applications

- Data centres
- Server rooms
- Edge applications

- Frame:**
- Frame capable of supporting up to 3000 lbs (1360kg) Static, 2250 lbs (1022kg) Dynamic.
 - Simple external baying, allows for metric or on 24" centres and leveling feet incorporated into the frame for easy adjustment.
 - 42U frame height that will allow access through standard doors on four swivel casters.

Certifications: EIA 310E - UL2416 - RoHS - REACH

Color: Frame, doors, side panels, top panel, rails and PDU brackets are powder coated RAL 7021 (Black)

Part Number	U	Height mm (inches)	Width mm (inches)	Depth mm (inches)
VR3100	42	2000 (78.6")	600 (23.6")	1100 (43.3")
VR3100SP	42	2000 (78.6")	600 (23.6")	1100 (43.3")
VR3300	42	2000 (78.6")	600 (23.6")	1200 (47.8")
VR3300SP	42	2000 (78.6")	600 (23.6")	1200 (47.8")
VR3150	42	2000 (78.6")	800 (31.5")	1100 (43.3")
VR3150SP	42	2000 (78.6")	800 (31.5")	1100 (43.3")
VR3350	42	2000 (78.6")	800 (31.5")	1200 (47.8")
VR3350SP	42	2000 (78.6")	800 (31.5")	1200 (47.8")
VR3107	48	2265 (89.2")	600 (23.6")	1100 (43.3")
VR3107SP	48	2265 (89.2")	600 (23.6")	1100 (43.3")
VR3307	48	2265 (89.2")	600 (23.6")	1200 (47.8")
VR3307SP	48	2265 (89.2")	600 (23.6")	1200 (47.8")
VR3157	48	2265 (89.2")	800 (31.5")	1100 (43.3")
VR3157SP	48	2265 (89.2")	800 (31.5")	1100 (43.3")
VR3357	48	2265 (89.2")	800 (31.5")	1200 (47.8")
VR3357SP	48	2265 (89.2")	800 (31.5")	1200 (47.8")

*Nominal dimensions, reference submittal drawings for exact dimensions, VRXXXSP ship with 2000 lb. rated shock packaging



High Density Cable Entry Top Panel

Removable openings for cable entry — ready for front / rear cabling. Can accommodate over 2000 Cat 6 cables.



Doors

Single and split 77% perforated doors providing maximum airflow. Lift off hinges for easy removal, and field reversibility.

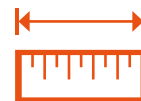
Frame

More usable depth compared to similar sized rack.



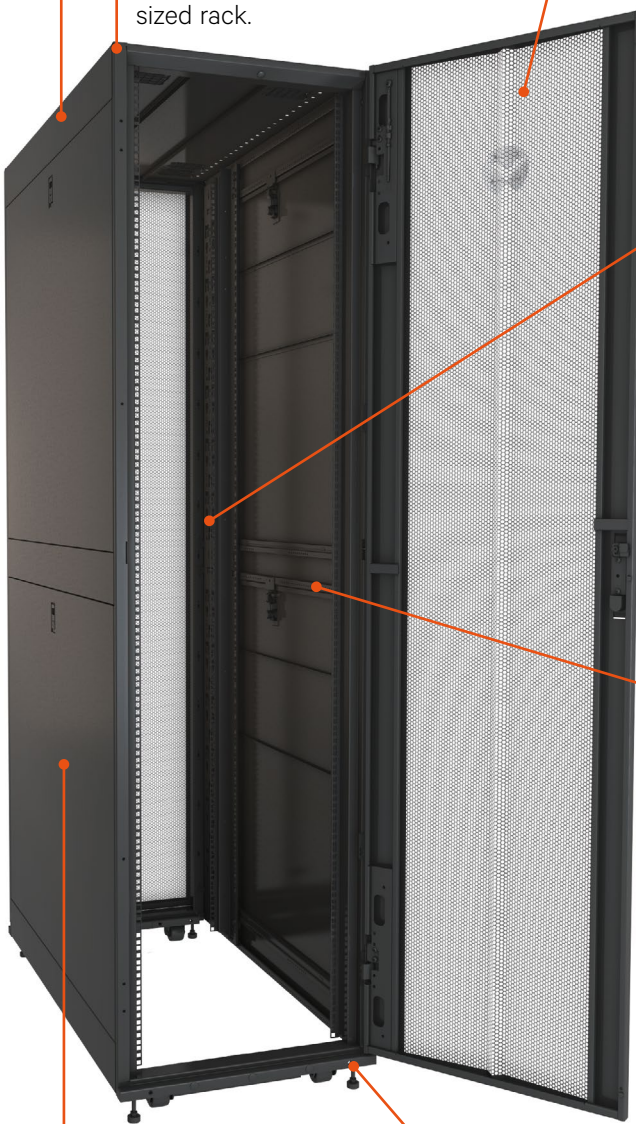
Tool-less Cable Management

Requires just inserting and twisting the tool-less accessories on 19" vertical mounting rail, or the PDU / cable management brackets.



Integrated 19" Rail Alignment

Ensures 19" rails are positioned correctly without measuring.



Split Locking Side Panels

For quick and easy installation and maintenance. Locks provide security.



Leveling Feet

Accessible from the top of the frame for easy adjustment.

CABLE MANAGEMENT

Horizontal Cable Organisers with Metal D Rings

Part Number	Description
VRA1000	1U Horizontal Cable Organiser with Metal D Rings (Qty. 1)
VRA1001	2U Horizontal Cable Organiser 2U with Metal D Rings (Qty. 1)



VRA1000

VRA1001

Horizontal Cable Managers with Covers

Part Number	Description
VRA1002	Horizontal Cable Manager, 1U x 4" Deep, Single-Sided with Cover (Qty. 1)
VRA1003	2U x 4" Deep Horizontal Cable Manager, Single-Sided with Cover (Qty. 1)
VRA1022	2U x 6" Deep Horizontal Cable Manager, Single-Sided with Cover (Qty. 1)
VRA1023	1U x 6" Deep Horizontal Cable Manager, Single-Sided with Cover (Qty. 1)



VRA1002

VRA1022

Tool-Less Cable Management: Lobster Claw

Part Number	Description
VRA1004	Tool-Less Cable Management -Lobster Claw (Qty. 10)
VRA1006	Tool -Less Cable Management -Lobster Claw (Qty. 100)



VRA1004

Tool-Less Cable Management: Velcro Strap

Part Number	Description
VRA1005	Tool Less Cable Management - Velcro Strap (Qty. 10)
VRA1007	Tool Less Cable Management - Velcro Strap (Qty. 100)



VRA1005

1/4 Turn Tool-Less Cable Management: D Rings

Part Number	Description
VRA1008	Tool-less D Rings Small (Qty. 10)
VRA1009	Tool-less D Rings Small (Qty. 100)
VRA1010	Tool-less D Rings Large (Qty. 10)
VRA1011	Tool-less D Rings Large (Qty. 100)



VRA1008 and
VRA1009

VRA1010 and
VRA1011

Horizontal Cable Manager Side Channel

Part Number	Description
VRA1013	Horizontal Cable Organizer Side Channel 20 to 33 inch adjustment (Qty. 1)
VRA1024	Horizontal Cable Organizer Side Channel 22 to 38 inch adjustment (Qty. 1)



VRA1013

CABLE MANAGEMENT

Vertical Cable Management Kit

Part Number	Description
VRA1014	Vertical Cable Manager 600mm Wide 42U (Qty. 2)
VRA1015	Vertical Cable Manager for 600mm Wide 48U (Qty. 2)
VRA1016	Vertical Cable Manager for 800mm Wide 42U (Qty. 2)
VRA1017	Vertical Cable Manager for 800mm Wide 48U (Qty. 2)



VRA1014



VRA1016

Hinged Covers

Part Number	Description
VRA1018	Hinged Covers 800mm Wide 42U Vertical Cable Manager (Qty. 2)
VRA1020	Hinged Covers 800mm Wide 48U Vertical Cable Manager (Qty. 2)



VRA1018

Vertical Cable Organiser

Part Number	Description
VRA1021	Vertical Cable Organiser, 8 Cable Rings, Zero U (Qty. 2)

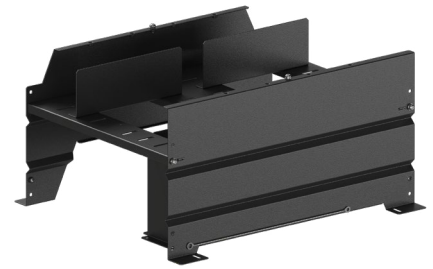


VRA1021

CABLE TROUGH

Power and Communications cabling on top of a row of equipment can be a hassle. Cable Troughs are designed to organize and protect your sensitive wiring. Color: black.

Part Number	Description
VRA8581	Cable Trough, 300mm
VRA8561	Cable Trough, 600mm
VRA8571	Cable Trough, 800mm
VRA8567	Cable Trough, End Caps (Set of 2)
VRA8573	Cable Trough Cover, 300mm
VRA8574	Cable Trough Cover, 600mm
VRA8575	Cable Trough Cover, 800mm
VRA8501	Cable Trough, Cable Alignment Kit (Set of 2)
VRA8502	Cable Trough, Connector Kit (Set of 2)
VRA8503	Cable Trough, Cable Separation Kit (Set of 12)
VRA8504	Cable Trough Grounding Wire, 750mm (Set of 10)
VRA8505	Cable Trough, 300mm Height Extension
VRA8506	Cable Trough, 600mm Height Extension

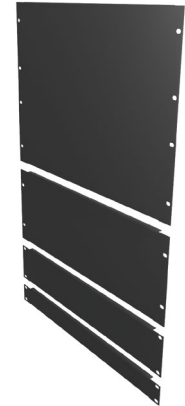


VRA8561 Cable Trough 600mm

AIR FLOW MANAGEMENT

Blank Panel 19" Tool Less Blanking Panel

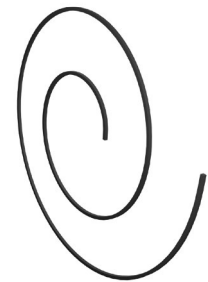
Part Number	Description
VRA2000	1U 19" Black Plastic Tool Less Airflow Blanking Panel (Qty. 10)
VRA2001	1U 19" Black Plastic Tool Less Airflow Blanking Panel (Qty. 200)
VRA2002	19" Sheet Metal Airflow Blanking Panel Kit (1U, 2U, 4U, 8U) Black (Qty. 1 ea. Size)
VRA2003	1U 19" Sheet Metal Airflow Blanking Panel Kit Black (Qty. 2) Black



VRA2002

Air Recirculation Prevention Kit

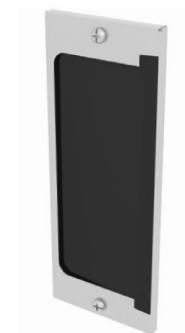
Part Number	Description
VRA2004	Air Recirculation Prevention Kit



VRA2004

19" Rail Brush Strips

Part Number	Description
VRA2005	19" Rail Brush Strips, 800mm Wide (Qty. 12)



VRA2005

Cable Pass Through Brush Kit for Top Panel

Part Number	Description
VRA2006	Cable Pass Through Brush Kit for Top Panel (Qty. 8)



VRA2006

SHELVES AND SUPPORT BRACKETS

19" Depth Adjustable Fixed Shelf 250lbs Black

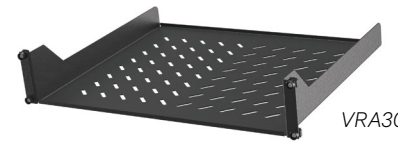
Part Number	Description
VRA3000	1U Depth Adjustable Fixed shelf 250lbs Black (Qty. 1)



VRA3000

2U 19" Cantilever Fixed Shelf 50Lbs Black

Part Number	Description
VRA3001	2U 19" Cantilever Fixed Shelf 50lbs Black (Qty. 1)



VRA3001

1U Depth Adjustable Sliding Shelf 200lbs Black

Part Number	Description
VRA3002	1U Depth Adjustable Sliding Shelf 100lbs Black (Qty. 1)
VRA3003	1U Depth Adjustable Sliding Shelf 200lbs Black (Qty. 1)



VRA3003

1U Depth Adjustable Equipment Support Rails 100lbs

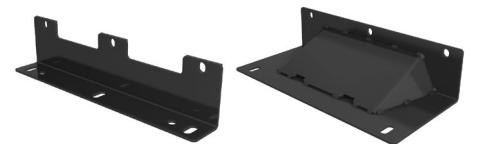
Part Number	Description
VRA3004	1U Depth Adjustable Equipment Support Rails 100lbs (Qty. 2)



VRA3004

Bolt Down Brackets

Part Number	Description
VRA4000	VR Bolt Down Brackets (Qty. 2)
VRA4001	VR Anti Tip Stabilizer Plate for 600mm/800mm Wide cabinets (Qty. 2)

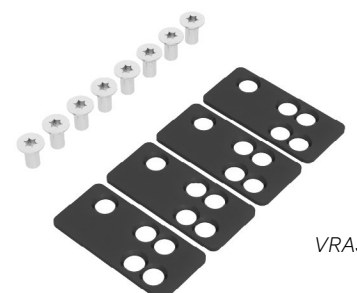


VRA4000

VRA4001

Baying and Hardware

Part Number	Description
VRA5002	Baying Kit: Baying Hardware Kit (1 Kit)
VRA5003	Baying Gasket kit for use when baying racks on 24" centres



VRA5002

SHELVES AND SUPPORT BRACKETS

Mounting Hardware

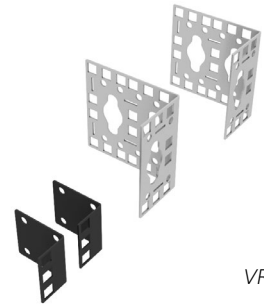
Part Number	Description
VRA5001	10-32 Cage Nuts (Qty. 50)
VRA5000	Mounting Hardware (Qty. 50 M6 cage nuts, screws, washers)



VRA5001

Zero U Accessory Mounting Bracket (Qty. 2)

Part Number	Description
VRA5004	Zero U Accessory Mounting Bracket (Qty. 2)



VRA5004

DOORS AND SECURITY

Handle Options

Part Number	Description
VRA6023	Combination Lock Handle (Qty. 2)
VRA6022	Standard Door Handle (Qty. 1)



VRA6022



VRA6023

SERVICE PARTS

19" Server Rails

Part Number	Description
VRA6013	42U x 600mm Wide 19" Server Rails (Cage Nut) Black (Qty. 2)
VRA6014	42U x 800mm Wide 19" Server Rails (Cage Nut) Black (Qty. 2)
VRA6015	48U x 600mm Wide Server Rails (Cage Nut) Black (Qty. 2)
VRA6016	48U x 800mm Wide 19" Server Rails (Cage Nut) Black (Qty. 2)

Single Perforated Doors

Part Number	Description
VRA6001	42U x 600mm Wide Single Perforated Door Black (Qty. 1)
VRA6002	42U x 800mm Wide Single Perforated Door Black (Qty. 1)
VRA6003	48U x 600mm Wide Single Perforated Door Black (Qty. 1)
VRA6004	48U x 800mm Wide Single Perforated Door Black (Qty. 1)

Split Perforated Doors

Part Number	Description
VRA6005	42U x 600mm Wide Split Perforated Doors Black (Qty. 2)
VRA6006	42U x 800mm Wide Split Perforated Doors Black (Qty. 2)
VRA6007	48U x 600mm Wide Split Perforated Doors Black (Qty. 2)
VRA6008	48U x 800mm Wide Split Perforated Doors Black (Qty. 2)

Split Side Panels

Part Number	Description
VRA6009	42U x 1100mm Deep Split Side Panels Black (Qty. 2)
VRA6010	42U x 1200mm Deep Split Side Panels Black (Qty. 2)
VRA6011	48U x 1100mm Deep Split Side Panels Black (Qty. 2)
VRA6012	48U x 1200mm Deep Split Side Panels Black (Qty. 2)

PDU/Cable Management Brackets

Part Number	Description
VRA6025	42U 4" Wide PDU/Cable Management Bracket Black (Qty. 2)
VRA6026	48U 4" Wide PDU/Cable Management Bracket Black (Qty. 2)

Top Panels

Part Number	Description
VRA6017	VRA6017: 600mm Wide x 1100mm Deep Top Panel Black (Qty. 1)
VRA6018	VRA6018: 800mm Wide x 1100mm Deep Top Panel Black (Qty. 1)
VRA6019	VRA6019: 600mm Wide x 1200mm Deep Top Panel Black (Qty. 1)
VRA6020	VRA6020: 800mm Wide x 1200mm Deep Top Panel Black (Qty. 1)

Miscellaneous

Part Number	Description
VRA6021	Replacement Roof Grommets Black (Qty. 8)
VRA6024	Caster Kit (Qty. 4)

Power Distribution

Increasing rack power density both in the data centre and at the network edge means that reliable power distribution is crucial.

Our innovative power distribution units and rack PDUs not only maintain power, but they also enable us to support you in any challenges your IT infrastructure might face.

From basic PDUs, to monitored and switched rack power distribution units, to locking receptacles, Vertiv's solutions will offer the power distribution you need, as well as remote monitoring and management of your assets' power usage, so you can rest assured everything is running at peak performance.

Enhanced Performance and Management of Dynamic IT Spaces

Enhance Business Agility, Efficiency and Availability with Vertiv™ Geist™ Rack PDUs

Data centre investments are sizable, and each component of the power chain from the facility entrance to the rack power distribution is crucial to enabling equipment availability. Enable your IT investment and your business to stay protected with the Vertiv™ Geist™ family of Rack PDU (rPDU) offerings.

The next generation of rPDUs provides the industry's highest availability and most intelligent power monitoring and distribution — complete with simplified energy management, a future-proof design, and cost savings that ensure your data centre and your business — can operate at peak efficiency.

Our complete portfolio of rPDUs offer value beyond power distribution. They easily integrate with your data centre infrastructure management systems to make your organisation more resilient, enhance your business and provide the technological support you need to grow your company.



Power

Monitor

Integrate

Basic rPDUs

Vertiv™ Geist™ Basic Rack PDUs (rPDUs) offer reliable, space saving, and cost-effective power distribution at the rack. Our Basic rPDUs meet a broad range of power distribution requirements for all IT applications.

Intelligent rPDUs

Vertiv™ Geist™ offers a wide range of monitored and switched rPDUs equipped with a network interface to allow for remote monitoring, management, and automated alerts. Vertiv™ Geist™ rPDUs offer important insights on how to improve data centre energy efficiency while enabling you to prevent downtime, providing notifications when user-specified thresholds for power and environmental conditions are breached.

At a Glance

Colour

Black powder coat finish.
Red, Orange, Yellow, Green, Blue, White available on Built-to-Order units.

Warranty

5-Year limited warranty if registered within 120 days of purchase, otherwise warranty defaults to 3 years.

Certifications*

- RoHS
- Assessed to EN 60950 for CE
- Assessed to EN 55032 and EN 55024 for CE
- UL & c-UL Listed 60950
- FCC Part 15 Class A Conformance

Configure-to-Order and Engineer-to-Order Capabilities

Built-to-Order units provide additional features, coloured chassis options, and varying power and receptacle configurations. Contact your Vertiv sales team for more information.

*Certifications vary by model. Refer to the product data sheet for specific regulatory information.

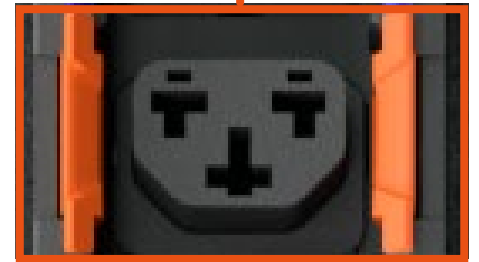
Combination Outlet C13 / C19



Simplify rPDU specification, purchase, and deployment.

The Combination Outlet C13/C19 provides the highest level of rack power versatility. The 2-in-1 design allows you to connect both IEC C14 and C20 plugs into the same outlet.

- High retention outlets reduce the risk of costly downtime from accidental disconnections of the power cord. The Combination Outlet C13 / C19 is also P-Lock compatible for additional protection
- Easily identify circuits with color-coded P-Lock tabs
- Streamline circuit and phase balancing with alternating outlets



Universal Power Distribution Unit (UPDU)

The Vertiv™ Geist™ UPDU is the most versatile and robust rack power distribution unit on the market with a universal power input and pivoting connector that can mate to any geographically specific Facility Side Cable, simplifying management and enabling rapid IT infrastructure deployments.

The Vertiv™ Geist™ UPDU features a universal input and a detachable power cable meeting AC power specs that are common worldwide ranging from 16A to 63A, 120V to 415V with single and three phase power configurations.

Models available in 11kW and 22kW max power load capacities in both vertical and horizontal form factors with various receptacle combinations, monitoring and outlet control options.

Benefits

- Supply chain agility
- Global data centre interoperability
- Improve power efficiency with input and outlet level power monitoring
- Lower inventory management costs

Integrated Rack Solutions

The universal design enables a single unit to be purchased, installed and shipped to any location around the world, regardless of the regional power infrastructure.

The Vertiv™ Geist™ UPDU power configuration is determined by the connected Facility Side Cable. Change the cable to adjust the input power configuration.



30/32A, 3P+N+E (IP44)
FSC3U002



30/32A, 2P+E (IP44)
FSC1U001



16/20A, 3P+N+E (IP44)
FSC3U001

Vertiv™ Intelligence Director

PLUG-N-PLAY DATA CENTRE INFRASTRUCTURE ENABLING LIGHTNING FAST DEPLOYMENTS

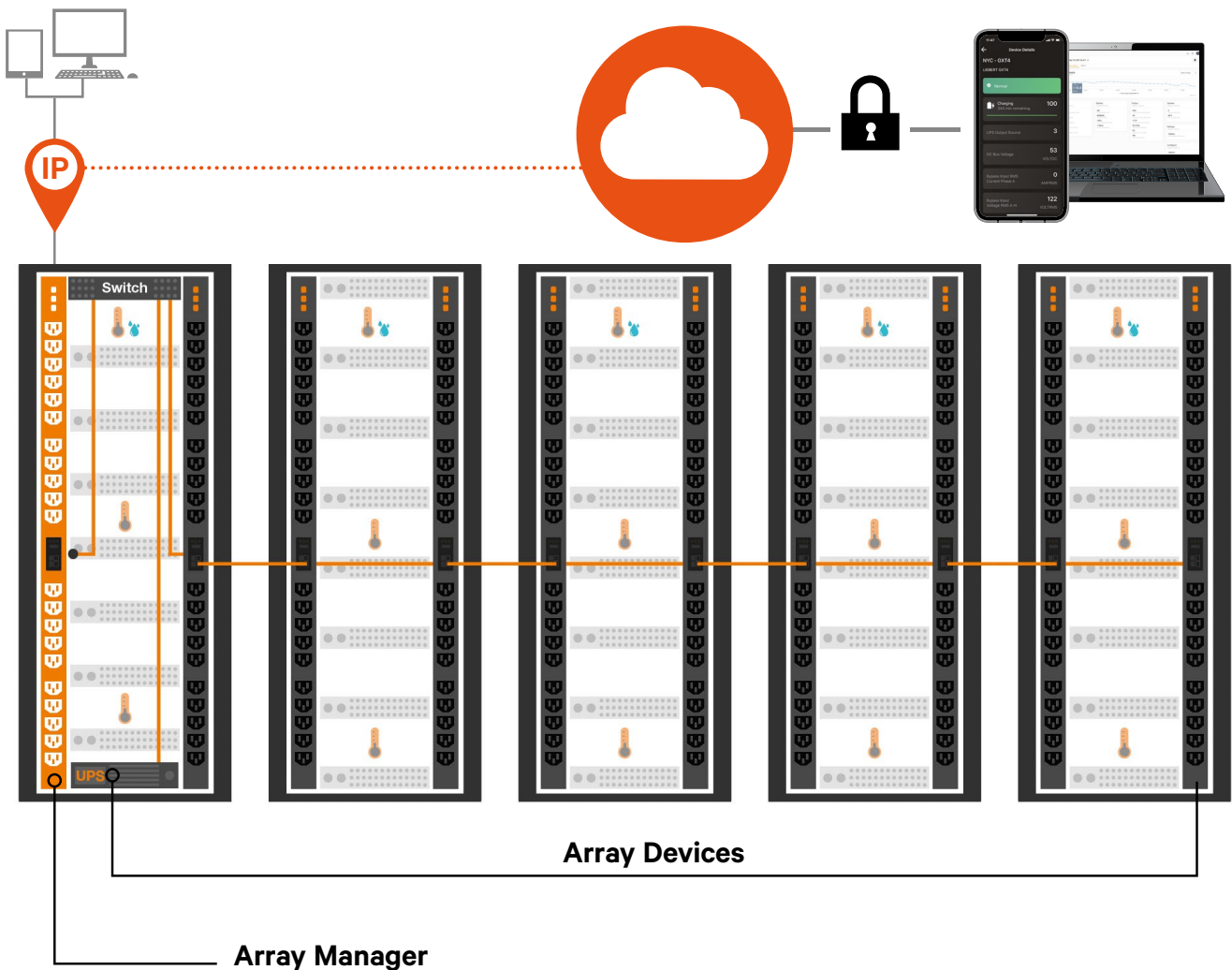
The next generation of Vertiv™ Geist™ rPDUs offer enhanced monitoring and simplified networking with the introduction of Vertiv™ Intelligence Director.

- On Monitored* and Switched units, users have the ability to daisy chain up to 50 devices with a single IP address.
- Access data from all downstream rPDU and UPS** devices from one rPDU.
- Users are able to aggregate data by grouping devices by rack or row.
- Downstream devices self-configure, significantly reducing deployment time.

How it works

1. Designate a Switched or Monitored unit as the array manager.
2. Connect up to 50 array devices through a network switch or by daisy chaining the rPDUs to the array manager.
3. Securely access array device data via SNMP or the array manager user interface through a single IP address and bring the consolidated data in your private cloud.
4. Bring your infrastructure data together with the option to connect to the Vertiv Intelligence cloud platform.

Securely transmit device data to the Vertiv™ Intelligence cloud for anytime access to critical infrastructure information.



Integrated Rack Solutions



Outlet Control

Address unresponsive equipment or increase runtime of critical equipment upon power failure with outlet-level control.



Upgradable & Hot-Swappable

Easily update your rPDU's monitoring capabilities to adapt to latest technologies and changing business needs.



Environmental Monitoring

Proactively monitor environmental conditions within the cabinet to ensure optimal operating conditions. A variety of sensors are available to meet your needs including temperature, humidity, airflow, door position, flood detection and more.



Combination C13/C19 Outlet

C13 and C19 in one. Provides the flexibility to connect C14 and C20 plugs in the same outlet. High retention colour coded outlets are P-Lock cable compatible.



U-Lock

Secure power cords and avoid accidental disconnections. Receptacles are colour-coded by circuit for instant identification.



Vertiv™ Intelligence Director

Daisy-chain up to 50 devices on a single IP address. Reduce deployment time with self-configuration of downstream devices.



High Temperature Grade

Up to 60°C working ambient variants for high temperature environments.



Remote Connectivity

Access the rPDU remotely via the network interface or serial connection to monitor power consumption and configure user-defined alert notifications to prevent downtime.



Fault-Tolerant Daisy Chaining

Simplifies intelligent rPDU connectivity and ensures data is reported even when a break in the network chain occurs.



Visible Light Communication (VLC)

Optically transmit data from the rPDU display to your mobile device using VLC for quick and secure access to unit and power consumption data.



Small Footprint and Low Profile Breakers

Compact size to install in tight spaces.



Power Monitoring 1% accuracy

Allows data centre managers to accurately monitor input and outlet level power usage with 1% monitoring accuracy tested to ANSI and IEC standards.



Universal Input

A universal input with a pivoting connector simplifies IT power infrastructure deployments by enabling users to standardise on a single rPDU globally.



rPDU Technical Specifications

Model	rPDU Type	rPDU Sub-Type	Horizontal / Vertical	Volts	Amps	Max kVA	Plug Type	Socket QTY/ Type	Max Operating Temp*	VI Director
VP9559	Basic	Standard	H	230V	16A	3.6kVA	C20 Inlet	(10) C13 / (2) C19	45°C	N/A
VP7552	Basic	Standard	V	230V	16A	3.6kVA	C20 Inlet	(20) C13 / (4) C19	45°C	N/A
VP7553	Basic	Standard	V	230V	32A	7.3kVA	1P+N+E(IP44)	(20) C13 / (4) C19	45°C	N/A
VP7557	Basic	Standard	V	230/400V	16A	11kVA	3P+N+E (IP44)	(36) C13 / (6) C19	45°C	N/A
033000081	Basic	Standard	H/V	230V	16A	3.6 kVA	Schuko	(8) Schuko	50°C	N/A
036220091	Basic	Standard	H/V	230V	10A	2.3 kVA	C14 inlet	(9) C13	50°C	N/A
VP8858	Monitored	Unit Level	V	230V	16A	3.6kVA	C20 Inlet	(18) C13 / (2) C19	60°C	YES
VP8853	Monitored	Unit Level	V	230V	32A	7.3kVA	1P+N+E(IP44)	(36) C13 / (6) C19	60°C	YES
VP43903	Monitored	Unit Level	V	230V	32A	7.3kW	1P+N+E(IP44)	(36) Combination C13/C19	60°C	YES
VP8881	Monitored	Unit Level	V	230/400V	16A	11kVA	3P+N+E (IP44)	(36) C13 / (6) C19	60°C	YES
VP8886	Monitored	Unit Level	V	230/400V	32A	22kVA	3P+N+E (IP44)	(30) C13 / (12) C19	60°C	YES
GI30146	Monitored	Unit Level	V	230/400V	32A	22kVA	3P+N+E(IP44)	(36) Combination C13/C19	60°C	YES
VP8959EU3	Switched	Unit Level	V	230V	16A	3.6kVA	C20 Inlet	(21) U-Lock C13 / (3) U-Lock C19	50°C	YES
VP52101	Switched	Unit Level	H	230V	16A	3.6kVA	C20 Inlet	(12) Combination C13/C19	60°C	YES
VP8953	Switched	Unit Level	V	230V	32A	7.3kVA	1P+N+E(IP44)	(20) U-Lock C13 / (4) U-Lock C19	50°C	YES
VP59100	Switched	Unit Level	H	230V	32A	7.3kVA	1P+N+E	(12) Combination C13/C19	60°C	YES
GU30007L	Switched	Outlet Level	V	230V	16A	3.6kVA	1P+N+E(IP44)	(21)U-Lock C13 / (3) U-Lock C19	50°C	YES
GU30017L	Switched	Outlet Level	V	230V	32A	7.3kVA	1P+N+E(IP44)	(20) U-Lock C13 / (4) U-Lock C19	50°C	YES
GU30004L	Switched	Outlet Level	V	230/400V	16A	11kVA	3P+N+E (IP44)	(30) U-Lock C13 / (6) U-Lock C19	50°C	YES
GU30010L	Switched	Outlet Level	V	230/400V	32A	22kVA	3P+N+E (IP44)	(30) U-Lock C13 / (6) U-Lock C19	50°C	YES

WatchDog sensors are also suitable for Geist rPDUs.

rPDU Models

Visit the rPDU Finder on Vertiv.com for a complete list of available models.

Universal PDU

Model	rPDU Type	rPDU Sub-Type	Horizontal / Vertical	PDU Ratings	Breaker Qty	Max kVA	Socket QTY/ Type	Max Operating Temp*	VI Director
UI30006L	Monitored	Unit Level	Vertical	16A 3~ WYE 230/415V max, 24A 3~ Delta 208V max, 48A 1~ 240V max	3	11kVA	(24) U-Lock C13, (12) U-Lock C19	60°C	YES
UI30007L	Monitored	Unit Level	Vertical	32A 3~ WYE 230/415V max, 48A 3~ Delta 208V max, 63A 1~ 240V max	6	22kVA	(24) U-Lock C13, (6) U-Lock C19	60°C	YES
UU30009L	Switched	Outlet Level	Vertical	16A 3~ WYE 230/415V max, 24A 3~ Delta 208V max, 48A 1~ 240V max	3	11kVA	(30) U-Lock C13, (6) U-Lock C19	60°C	YES
UU30010L	Switched	Outlet Level	Vertical	32A 3~ WYE 230/415V max, 48A 3~ Delta 208V max, 63A 1~ 240V max	6	22kVA	(18) U-Lock C13, (12) U-Lock C19	60°C	YES

Facility Side Cable

Model	Plug Type	Rating	kVA (max)	kVA (max)
Facility Side Cable (FSC)			3 Breaker UPDU	6 Breaker UPDU
FSC3U002	30/32A, 3P+N+E (IP44)	30/32A, 230/400V WYE	11.0kVA**	22.0kVA
FSC3U001	16/20A, 3P+N+E (IP44)	16A, 230/400V WYE	11.0kVA	11.0kVA
FSC1U001	30/32A, 2P+E (IP44)	30/32A, 208/230V	7.3kVA	7.3kVA

Product chart shows limited spec information. For complete product details visit Vertiv.com.

*See data sheet for maximum operating temperature requirements.

**Max kVA limited by internal UPDU circuit breakers

Monitoring

Whether we're talking about battery monitoring, leak detection systems, temperature monitoring, sensor-level monitoring for harsh industrial environments, or complex data centre monitoring systems, we can all agree that this is an essential part of future-proofing and safe-guarding a critical facility from threats that range from faulty equipment and environmental conditions to cyber intrusions.

That is why we are investing heavily in a continuous learning process to not only detect, but also predict causes of downtime keeping your customer's assets safe against threats. Learn more below.

Monitoring Facilities and Monitoring Solutions



SNMP and Web Monitoring

The Vertiv Intellislot Cards provide SNMP and web-based management to your UPS. The cards give you the power to monitor and control your Liebert® UPS from a Network Management System, with Vertiv™ Power Assist or any other Vertiv monitoring software, or from any PC running Microsoft® Internet Explorer™. Connecting to your UPS is as simple as launching a web browser

Vertiv Geist Watchdog-15 and Vertiv Geist Watchdog-100

Vertiv Geist Watchdog Environmental Monitors allow users to securely observe conditions and receive alerts when user defined thresholds are breached.

Key Benefits



- Protect critical IT infrastructure by strategically monitoring data centre, server room and network closet environments.
- Expand monitoring capabilities with the addition of external sensors.
- View real time sensor data from a secure web interface and receive alerts via Email, SNMP, or Email-to-SMS.
- Receive alerts of out-of-range conditions to ensure they are addressed before resulting in downtime.
- Simple to install and configure, requires no special software other than a standard web browser.



Vertiv Shutdown Software

Vertiv™ Power Assist

Vertiv™ Power Assist is a free software used to gracefully shutdown an IT device when the UPS battery backup experiences a threatening condition. The software notifies users of an event, displays key metrics and logs historical data. It is easy to install and protects computers from damage and data loss during a power event.

Vertiv™ Geist™ Environmental Monitors

Model	Description	Services	Description
Environmental Monitors			
WATCHDOG 100-NPS	WATCHDOG 100-NPS (no power supply)	RCON-DE5-WDOG100	Distribution Emergency 5 YR Watchdog 100
WATCHDOG 100-P NPS	WATCHDOG 100-P NPS (POE & no power supply)	RCON-DE5-WDOG100	Distribution Emergency 5 YR Watchdog 100
WATCHDOG 100-P UK	WATCHDOG 100-P UK (POE & British power supply)	RCON-DE5-WDOG100	Distribution Emergency 5 YR Watchdog 100
WATCHDOG 100-P UN	WATCHDOG 100-P UN (POE & Univ. power supply)	RCON-DE5-WDOG100	Distribution Emergency 5 YR Watchdog 100
WATCHDOG 100-UK	WATCHDOG 100-UK (British power supply)	RCON-DE5-WDOG100	Distribution Emergency 5 YR Watchdog 100
WATCHDOG 100-UN	WATCHDOG 100-UN (Univ. Power supply)	RCON-DE5-WDOG100	Distribution Emergency 5 YR Watchdog 100
WATCHDOG 15-NPS	WATCHDOG 15-NPS (no power supply)	RCON-DE5-WDOG15	Distribution Emergency 5 YR Watchdog 15
WATCHDOG 15-P NPS	WATCHDOG 15-P NPS (POE & no power supply)	RCON-DE5-WDOG15	Distribution Emergency 5 YR Watchdog 15
WATCHDOG 15-P UK	WATCHDOG 15-P UK (POE & British power supply)	RCON-DE5-WDOG15	Distribution Emergency 5 YR Watchdog 15
WATCHDOG 15-P UN	WATCHDOG 15-P UN (POE & Univ. power supply)	RCON-DE5-WDOG15	Distribution Emergency 5 YR Watchdog 15
WATCHDOG 15-UK	WATCHDOG 15-UK (British power supply)	RCON-DE5-WDOG15	Distribution Emergency 5 YR Watchdog 15
WATCHDOG 15-UN	WATCHDOG 15-UN (Univ. Power supply)	RCON-DE5-WDOG15	Distribution Emergency 5 YR Watchdog 15
Sensors			
RTAFHD3-12	Remote environmental sensor, Temperature/Airflow/Humidity/Dew Point, length 12 ft	-	-
RTAFHD3-20	Remote environmental sensor, Temperature/Airflow/Humidity/Dew Point, length 20 ft	-	-
RTAFHD3-50	Remote environmental sensor, Temperature/Airflow/Humidity/Dew Point, length 50 ft	-	-
RTAFHD3-100	Remote environmental sensor, Temperature/Airflow/Humidity/Dew Point, length 100 ft	-	-
WSCK-120-NPS	Water Sensing Cable Kit (analog), length 120 ft	-	-
WSCK-60-NPS	Water Sensing Cable Kit (analog), length 60 ft	-	-
WSCK-40-NPS	Water Sensing Cable Kit (analog), length 40 ft	-	-
WSCK-10-NPS	Water Sensing Cable Kit (analog), length 10 ft	-	-
SRT-100	Remote environmental sensor, Temperature, length 100 ft	-	-
SRT-12	Remote environmental sensor, Temperature, length 12 ft	-	-
SRT-20	Remote environmental sensor, Temperature, length 20 ft	-	-
SRT-50	Remote environmental sensor, Temperature, length 50 ft	-	-
A2D-10	Analog to Digital Converter, length 10 ft	-	-
FS-15	Flood Sensor (analog), length 15 ft	-	-
RDPS	Dry Contact Sensor (analog), length 30 ft	-	-
PFS-100 UN	Power Failure Sensor	-	-
GTHD	Remote environmental sensor, Temperature/Humidity/Dew Point, length 10 ft	-	-
GT3HD	Remote environ. sensor, Temp./Humidity/Dew Point + 2 additional Temp. probes, length 10 ft	-	-
SP-5	5-port splitter for digital Remote sensors	-	-

Thermal Management

Get efficient and reliable heat management and humidity control solutions geared to your specific size, location and business goals.

Your mission-critical facilities need the very best in precision cooling, and we deliver with the industry's most advanced equipment and controls, low operating costs and unparalleled expertise.

Thermal Management Vertiv™ Liebert® CRV



Row-Based Cooling

Direct Expansion (DX) Cooling Unit up to 22 kW or from 13-22 kW
Chilled Water (CW) Cooling Unit up to 33 kW

Key Benefits

The Vertiv™ Liebert® CRV Combines the Best Footprint Cooling Capacity with the Highest Efficiency

- High Efficiency at Full and Partial Load
- Designed to provide the Highest Availability
- Industry's Most Advanced Control and Performance Optimisation
- Comprehensive Row-Based Cooling
- Backed by the Industry's Best Service and Support
- 13 - 22 kW Vertiv™ Liebert® CRV
- Moving cooling closer to the source
- Field-adjustable air baffles - directing air where needed

Direct expansion version

- DC Inverter Scroll Compressor
- Electronic Expansion Valve
- Variable Speed EC Fans

Chilled water version

- Field Adjustable 2way / 3way valve
- 0-10V continuously controlled actuators
- Variable Speed EC Fans

Applications

- Banking, Financial and Insurance
- Broadcast and Entertainment
- Data Centre/Colocation/Hosting
- Education
- Government
- Telecom



Technical Specifications

Technical Data	CR012	CR025	CR030
Net Sensible Cooling Capacity*	13 kW	22 kW	33kW
Version	Air Cooled DX	Air Cooled DX	Chilled Water
Input Voltage	400V, 3phase, 50Hz	400V, 3phase, 50Hz	230V, 1phase, 50Hz
Humidifier	No	Yes	Yes
Refrigerant	R410A	R410A	Chilled Water
Compressor	DC Inverter, Rotary	DC Inverter, Scroll	—
CW Valve	—	—	Field Adjustable 3way/2way, with 0-10V actuator
Controls	Vertiv™ iCOM™ Control with Graphical Display and monitoring of up to 10 racks		Vertiv™ iCOM™ Control with Graphical Display and monitoring of up to 6 racks
Communications	Modbus, SNMP, Web monitoring, E-mail notifications about alarms		

* Return air temperature 37°C, 24% Relative Humidity, 35°C Outdoor Temperature for CR012 and CR025
 Return air temperature 37°C, 24% Relative Humidity, 10/15°C chilled water temperatures for CR030

Dimensions

Height	2000/2200* mm	2000/2200* mm	2000/2200* mm
Width	300 mm	300 mm	300 mm
Depth	1100/1200* mm	1100/1200* mm	1100/1200* mm

* with field installed frame extensions

Suitable Condenser

Up to 35°C Ambient Temperature	HCR33	HCR33	—
Up to 46°C Ambient Temperature	HCR43	HCR51	—

Thermal Management Vertiv™ VRC IT Rack Cooling Unit



Rack Cooling Unit

Designed to satisfy cooling requirements for small server rooms, network closets, and edge applications up to 3500 watts per cabinet, the Vertiv™ VRC IT rack cooling unit packs powerful, scalable and energy-efficient cooling into a compact unit. It fits into most standard 19-inch network racks, freeing up valuable floor space. It is available in Self-contained or Split version to fit different building architectures.

Key Benefits

- Space saving
- Available in Split or Self-contained version to fit different building architectures
- Easy plug-and-play installation of the Self-contained version
- Lowers energy consumption
- Practical accessories included in the packaging - display, condensate pump, SNMP/Modbus monitoring card and installation accessories
- Peace of mind through easy monitoring and management

Thermal Management Vertiv™ VRC Self-Contained



- Reliably and efficiently satisfies cooling requirements for small room and edge applications up to 3.5 kW per cabinet
- Fits into standard racks, leaving the valuable floor space free in small IT rooms
- Reduces capital expenses and deployment costs with simple installation and no need to run refrigerant piping between an outdoor and indoor unit
- Improves efficiency and reduces operating costs with real-time cooling and capacity adjustment
- Provides peace of mind and ease of management through remote monitoring capabilities
- 2 years standard warranty



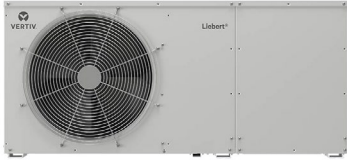
SKU#	VRC100KIT	VRC101KIT	VRC102KIT
Region	Americas	Americas	Europe, Middle East and Africa
Input Voltage	120V/1Ph/60Hz	208V/1Ph/60Hz	230V/1Ph/50Hz
Net Sensible Cooling Capacity*	3500W (12000BTU/h)	3500W (12000BTU/h)	3500W (12000BTU/h)
Capacity Modulation	25 - 100%	25 - 100%	25 - 100%
Power Plug	5-20P	6-20 P	Type I plug (IEC60320)
Total Current	16.5 Amps	13.1 Amps	11.5 Amps
Refrigerant	R410A	R410A	R410A
Communications	SNMP, Modbus RTU	SNMP, Modbus RTU	SNMP, Modbus RTU
Approvals	UL	UL	CE
Standard Warranty	2 years	2 years	2 years
Occupied U space	10U	10U	10U
Dimensions (H x D x W)	17.3 x 38.5 x 17.4 in (439 x 978 x 442 mm)	17.3 x 38.5 x 17.4 in (439 x 978 x 442 mm)	17.3 x 38.5 x 17.4 in (439 x 978 x 442 mm)
Weight	161 lbs (73kg)	161 lbs (73kg)	165lbs (75kg)

* Air Temperature to IT equipment 21°C (70°F), Heat Rejection inlet air temperature 25°C (77°F)

Services

Service Offering	Description	Included
Preferred Warranty	Two-year protection program for Vertiv™ VRC. It can be purchased only at the point of sale, it is valid throughout the two-year warranty period	Coverage of faulty parts as per standard warranty terms <ul style="list-style-type: none"> • Labour and travel coverage as per standard warranty terms • 8 working hours response time • One annual preventive maintenance visit • 24x7 access to professional helpline
Integrated Warranty Extension	One-year after-warranty protection program	Coverage of faulty parts excluding consumables <ul style="list-style-type: none"> • Labour and travel coverage • 8 working hours response time • One annual preventive maintenance visit • 24x7 access to professional helpline
Additional Services	Additional services available on 8x5 or 24x7 basis	<ul style="list-style-type: none"> • Electrical and mechanical installation • Start-up

Thermal Management Vertiv™ VRC Split



- Reliably and efficiently satisfies cooling requirements for small room and edge applications up to 3.5 kW per cabinet, regardless of building architecture and independent of a building cooling system
- Requires only 6U due to space-saving form factor that leaves the valuable floor and rack space free in small IT rooms
- Lowers energy consumption and reduces operating costs due to real-time cooling and capacity adjustments
- Offers installation flexibility with options for mounting at the top or bottom of standard racks
- Provides peace of mind and simplified management with unit-level or remote monitoring capabilities
- 2 years standard warranty

Technical Specifications

SKU#	VRC202KIT-N	VRC202KIT-L
Indoor unit model	VRC202KIT	VRC202KIT
Outdoor unit model	VRC302KIT	VRC352KIT
Minimum Outdoor Operating Temperature	-15°C (+5°F)	-34°C (-29°F)
Region	Europe, Middle East and Africa	Europe, Middle East and Africa
Input Voltage	230V/1Ph/50-60Hz	230V/1Ph/50-60Hz
Net Sensible Cooling Capacity*	3800W (13000BTU/h)	3400W (11600BTU/h)
Capacity Modulation	25 - 100%	25 - 100%
Power connection	Hard Wired (terminal block)	Hard Wired (terminal block)
Total Current (indoor / outdoor)	1,5A / 7,2A	1,5A / 7,2A
Refrigerant	R410A	R410A
Communications	SNMP, Modbus RTU	SNMP, Modbus RTU
Approvals	CE	CE
Standard Warranty	2 years	2 years
Occupied U space	6U	6U
Dimensions Indoor (H x D x W)	264 x 602 x 442 mm	264 x 602 x 442 mm
Dimensions Outdoor (H x D x W)	527 x 282 x 786mm	527 x 282 x 1158mm
Weight (indoor / outdoor)	23kg/44kg	23kg/68kg

*Air Temperature to IT equipment 21°C (70°F), Outdoor air temperature 35°C (95°F)

Services

Service Offering	Description	Included
Preferred Warranty	Two-year protection program for Vertiv™ VRC. It can be purchased only at the point of sale, it is valid throughout the two-year warranty period	Coverage of faulty parts as per standard warranty terms <ul style="list-style-type: none"> • Labour and travel coverage as per standard warranty terms • 8 working hours response time • One annual preventive maintenance visit • 24x7 access to professional helpline
Integrated Warranty Extension	One-year after-warranty protection program	Coverage of faulty parts excluding consumables <ul style="list-style-type: none"> • Labour and travel coverage • 8 working hours response time • One annual preventive maintenance visit • 24x7 access to professional helpline
Additional Services	Additional services available on 8x5 or 24x7 basis	<ul style="list-style-type: none"> • Electrical and mechanical installation • Start-up

Data Centre Management Solutions

Vertiv™ Avocent® products are a core component of Vertiv's Data Centre Infrastructure. These solutions enable small to enterprise sized organisations to reduce costs, increase security and optimise availability and productivity.

This portfolio includes hardware and software solutions. The hardware solutions enable secure, auditable remote access, control and management of critical devices through patented, out-of-band technology. This remote access can be to any distance and can scale to high definition audio and video for specialist verticals.

The software solutions deliver efficiencies to the data centre specialist by centralising management of all IT devices. Furthermore, when documenting the data centre, managing and planning capacity, we offer organisations a single source of truth tool where they can manage all aspects of this efficiently.

To make it easier, we have divided our products into two sections, as follows:

- **Section 1** - Focuses on customers who want desktop and server room solutions
- **Section 2** - Focuses on customers who require enterprise level solutions to meet the demanding business challenges which require an agile IT infrastructure

SECTION 1

Desktop and Server Room IT Management Solutions

Our range of products enables the end user to:

- Efficiently access control and manage the server room without the need to physically be there
- Help remove IT assets from unsuitable work areas, like hospitals, factories, warehouses, clean rooms, shops
- De-clutter work places where users require access to multiple PCs, but do not want to use multiple displays, keyboards and mice
- Efficiently access server room assets and maximise server room space

Desktop Solutions

Vertiv™ Avocent® KVM

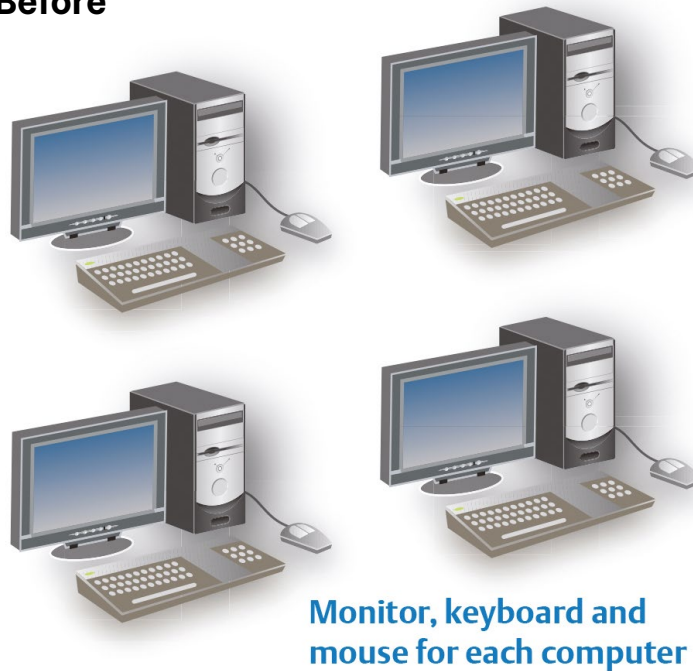
Having a dedicated display/keyboard/mouse for accessing each PC, can take up a lot of space and also cause unnecessary hardware cost. The whole process can become a costly mess.

This is where the Vertiv Avocent® Keyboard, Video, Mouse (KVM) Appliance comes in: our switch makes access possible to multiple PCs with only one set of peripherals and no software. With the Vertiv Avocent KVM Switch, the end user can immediately shift between multiple devices with high video resolutions and audio and USB sharing, without configuring settings.

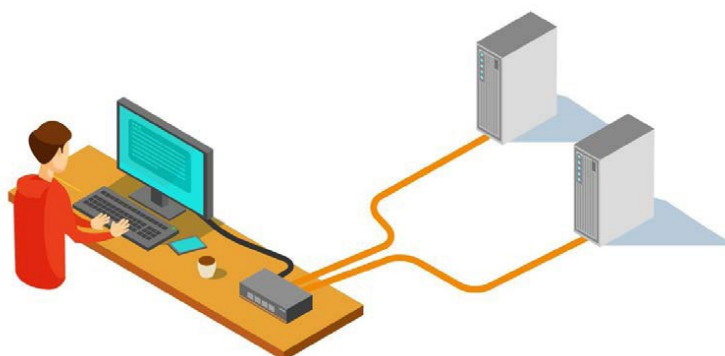
Simply plug in our device and benefit from:

- More space
- Less costs (no need to invest in several peripherals)
- Increased efficiency – easier to switch between devices
- A more productive work environment

Before



After



Desktop Solutions Cybex™ SC800 and SC900 Secure Desktop KVM Switches



Vertiv™ Cybex SC800 / SC900 Secure Desktop KVM switches are field-proven, secure, KVM switching solutions with special support for government agencies and security conscientious organisations.

Key Benefits

- Compliant with the stringent specifications of the U.S. government NIAP / Common Criteria Protection Profile for Peripheral Sharing Switch version 3.0.
- Improves security at the desktop environment using premium security technology that eliminates the need for additional connected devices.
- Prevents information leaks, transfer or crosstalk between adjacent ports and filters ultrasonic audio frequencies via unidirectional optical data diodes (UODD)

Vertiv™ Cybex SC800 / SC900 Secure Desktop KVM switches SKUs

Part Number	Description
SC820-xxx	2-port secure desktop KVM, DVI-I (dual-link), USB 2.0 peripheral ports, audio
SC820D-xxx	2-port secure desktop KVM, Display Port, USB 2.0 peripheral ports, audio
SC820H-xxx	2-port secure desktop KVM, HDMI, USB 2.0 peripheral ports, audio
SC820DP-xxx	2-Port Single-Head Secure KVM, DP in/DP out
SC840-xxx	4-port secure desktop KVM, DVI-I (dual-link), USB 2.0 peripheral ports, audio
SC840D-xxx	4-port secure desktop KVM, Display Port, USB 2.0 peripheral ports, audio
SC840H-xxx	4-port secure desktop KVM, HDMI, USB 2.0 peripheral ports, audio
SC840DP-xxx	4-port Single-Head Secure KVM, DP in/DP out
SC845-xxx	4-port secure desktop KVM, DVI-I (dual-link), USB 2.0 peripheral ports, audio, DPP
SC845D-xxx	4-port secure desktop KVM, Display Port, USB 2.0 peripheral ports, audio
SC845H-xxx	4-port secure desktop KVM, HDMI, USB 2.0 peripheral ports, audio, DPP
SC845DP-xxx	4-port Single-Head Secure KVM, DP in/DP out, DPP (Dedicated Peripheral Port)
SC885-xxx	8-port DVI-I Secure KVM DPP
SC885DP-xxx	8-port Single-Head Secure KVM, DP in/DP out, DPP (Dedicated Peripheral Port)
SC920-xxx	2-port secure desktop KVM, dual head DVI-I (dual-link), USB 2.0 peripheral ports, audio
SC920D-xxx	2-port secure desktop KVM, dual head Display Port, USB 2.0 peripheral ports, audio
SC920H-xxx	2-port secure desktop KVM, dual head HDMI, USB 2.0 peripheral ports, audio
SC920DP-xxx	2-port Dual-Head Secure KVM, DP in/DP out
SC920XP-xxx	2-port Dual-Head Secure KVM, both DP in and DVI-I in/DP out and DVI-I out
SC920XD-xxx	2-port DVI-I, DP DH Secure KVM
SC940-xxx	4-port secure desktop KVM, dual head DVI-I (dual-link), USB 2.0 peripheral ports, audio
SC940D-xxx	4-port secure desktop KVM, dual head Display Port, USB 2.0 peripheral ports, audio
SC940H-xxx	4-port secure desktop KVM, dual head HDMI, USB 2.0 peripheral ports, audio
SC940DP-xxx	4-port Dual-Head Secure KVM, DP in/DP out
SC945-xxx	4-port secure desktop KVM, dual head DVI-I (dual-link), USB 2.0 peripheral ports, audio, DPP
SC945D-xxx	4-port secure desktop KVM, dual head Display Port, USB 2.0 peripheral ports, audio, DPP
SC945H-xxx	4-port secure desktop KVM, dual head HDMI, USB 2.0 peripheral ports, audio, DPP
SC945DP-xxx	4-port Dual-Head Secure KVM, DP in/DP out, DPP (Dedicated Peripheral Port)
SC945XP-xxx	4-port Dual-Head Secure KVM, both DP and DVI-I in/DP and DVI-I out, DPP
SC945XD-xxx	4-port DVI-I, DP DH Secure KVM DPP
SC985-xxx	8-port DVI-I DH Secure KVM DPP
SC985DP-xxx	8-port Dual-Head Secure KVM, DP in/DP out, DPP (Dedicated Peripheral Port)

When ordering products please replace the suffix "-xxx" with the suffix for your region, as follows: -

201 UK and Ireland -

202 European region

Desktop Solutions

Vertiv™ Cybex AFP SKUs



Vertiv™ Cybex AFP SKUs

Part Number	Description
AFP0004	4-port Active Front Panel (AFP) remote KVM switch
AFP0008	8-port Active Front Panel (AFP) remote KVM switch

When ordering products please replace the suffix "-xxx" with the suffix for your region, as follows: -

- 201 UK and Ireland -
- 202 European region

Desktop Solutions

Vertiv™ Avocent® Cybex™ KVM Switches SwitchView™ KVM Switches

Vertiv™ Cybex™ Secure Desktop Matrix switches

are designed to connect up to eight computers, allowing users to simultaneously view two active computers and seamlessly switch between sources, by moving the mouse across display borders called Cursor Navigation Switching (CNS). Using a single set of keyboard, mouse and audio peripherals, users can securely switch between computers on different classification levels.

Desktop Solutions

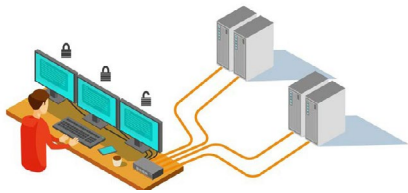
Cybex™ SCM Secure Desktop Matrix KVM

The Cybex SCM secure desktop Matrix KVM

switch offers a proven solution for guarding against cyber intrusion at the desktop.

Key Benefits

- Certified to meet the requirements of the latest NIAP Protection Profile for Peripheral Sharing Devices version 3.0.
- Independently switched display connections - situational awareness of any two connected systems.
- Cursor navigation switching lets users switch control between systems by simply moving the mouse cursor from one display monitor to another.
- Hardware-based peripheral isolation loads all firmware on ROM with no keyboard buffering or memory.
- Dedicated Peripheral Port permits a secure connection to external USB devices, including CAC smart card readers, fingerprint readers, and face recognition devices.



Vertiv™ Cybex SCM secure desktop Matrix KVM SKUs

Part Number	Description
SCM145-xxx	4-port secure desktop Matrix, DVI-I (dual-link), USB 2.0 peripheral ports, audio
SCM145H-xxx	4-port secure desktop Matrix, HDMI, USB 2.0 peripheral ports, audio
SCM145DP-xxx	4-port Single-Head Secure KVM, 4x2, 4 DP Ports in/2 DP Ports out, DPP
SCM185DP-xxx	8-port Single-Head Secure KVM, 8x2, 8 DP Ports in/2 DP Ports out, DPP
SCM185-xxx	8-port Single-Head Secure KVM, 8x2, 8 DVI-I Ports in/2 DVI-I Ports out, DPP

When ordering products please replace the suffix "-xxx" with the suffix for your region, as follows:

-201 UK and Ireland

-202 European region

Desktop Solutions

Vertiv™ Avocent® Cybex™ KVM Switches SwitchView™ KVM Switches

Vertiv™ Avocent® Desktop KVM switches enable you to use a single keyboard monitor and mouse to access multiple PCs. Cybex KVM switches can support PS/2 and/or USB PCs, and SwitchView multimedia switches let you share USB devices, speakers and a microphone between PCs.

For more security focussed customers, Vertiv™ Avocent® SwitchView™ SC KVM switches are field-proven, secure solutions for government agencies and other environments with high security requirements. These solutions allow users to switch safely between computers, operating at different classification levels, from a single switch, providing continuous access to critical data. Beyond validation by the National Information Assurance Partnership (NIAP) Common Criteria (Protection Profile 3.0) to Evaluation Assurance Level (EAL) 4+, the Vertiv Avocent Cybex SC product line includes a full suite of features to increase security and ensure data protection without limiting the user experience.

Desktop Solutions

Vertiv™ Avocent® SwitchView SV 200 and SV 300 Desktop KVM Switches



Avocent® Desktop KVM switches

simplify access to essential business systems.

Key Features

- Advanced video support including DVI-I, HDMI, DisplayPort, and support for resolutions up to UHD 4K assures image quality is highly accurate and video plays at the highest definition possible.
- Managed copy and paste allow content to be copied from one system to another.
- Independent audio and USB switching lets users freeze audio and USB 3.0 peripherals while simultaneously working on a different system. Multiple USB ports provide easy connectivity to external USB devices, quick data transfer and high-speed charging of mobile devices.

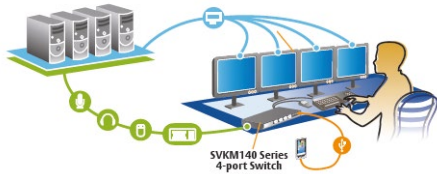
Part Number	Description
SV220-xxx	2-port desktop KVM, DVI-I (dual-link), audio
SV220D-xxx	2-port desktop KVM, Display Port, audio
SV220H-xxx	2-port desktop KVM, HDMI, audio
SV240-xxx	4-port desktop KVM, DVI-I, USB 3.0 peripheral ports, audio
SV240H-xxx	4-port desktop KVM, Display Port, USB 3.0 peripheral ports, audio
SV240D-xxx	4-port desktop KVM, HDMI, USB 3.0 peripheral ports, audio
SV340-xxx	4-port desktop KVM, dual head DVI-I, front-panel USB 3.0, audio
SV340H-xxx	4-port desktop KVM, dual head Display Port, front-panel USB 3.0, audio
SV340D-xxx	4-port desktop KVM, dual head HDMI, front-panel USB 3.0, audio

When ordering products please replace the suffix "-xxx" with the suffix for your region, as follows:

- 201 UK and Ireland
- 202 European region

Desktop Solutions

Vertiv™ Avocent® Cybex™ KM Switches



The Vertiv family of KM switches delivers the ideal solution for streamlining access to critical information from multiple systems while maintaining high security.

The Vertiv KM switches can support up to four systems with a single keyboard and mouse. In addition, the switches can be easily configured to display content in dual, triple or quad head monitor configurations, allowing the 4-port KM switch to support up to 16 monitors at once.

Choosing a Cybex™ KM Switch allows you to:

- Increase productivity with simultaneous access to all required information via cursor navigation switching
- Reduce cost with access to multiple systems using a single keyboard and mouse
- Support the mobile worker with instant access to mobile and USB device data and a high-speed mobile charging port
- Simplify work with ability to copy and paste data

Part Number	Description
SVKM120-xxx	2-port desktop KM, Front-panel USB 2.0, audio
SVKM140-xxx	4-Port Standard KM
SCKM120-xxx	2-port Secure KM
SCKM140-xxx	4-port Secure KM
SCKM145-xxx	4-port Secure KM + 1 DPP
CBL0130	Vertiv Avocent Cybex™ SCKM140 cable, USB keyboard, mouse with speakers - 1.8m
CBL0131	Vertiv Avocent Cybex™ SCKM140 cable, USB keyboard, mouse with speakers - 3m
CBL0132	Vertiv Avocent Cybex™ SCKM145 cable, USB keyboard, mouse with speakers & CAC - 1.8m
CBL0133	Vertiv Avocent Cybex™ SCKM145 cable, USB keyboard, mouse with speakers & CAC - 3m

When ordering products please replace the suffix "-xxx" with the suffix for your region, as follows:

-201 UK and Ireland

-202 European region

Desktop and Server Room Solutions

Vertiv™ Avocent® Extension Solutions



If your business involves having expensive hardware in a dangerous environment, you definitely need a solution that allows you to protect your investment.

For example, having a computer in a manufacturing area can easily cause damages to the device, causing you to lose important data and a lot of money. If you're wondering how you can avoid this in the future, the Vertiv™ Avocent® Longview is the solution! Our product is the simple and inexpensive solution that allows you to remove the PC from the harmful environment, without losing any of the functionality.

The Vertiv™ Avocent® Longview is the perfect device for you, if your business involves the following:

- Manufacturing, hospitals or laboratories
- Environments where protection from theft is needed
- Environments where heat, noise and dust are harmful to electronic equipment

Part Number	Description
LV3010P-xxx	LongView single VGA, USB, audio, CATx 300M
LV3020P-xxx	LongView dual VGA, USB, audio, CATx 300M
LV4010P-xxx	LongView single DVI, USB, audio, CATx 50M
LV4010P-xxx	LongView single DVI, USB, audio, CATx 50M
LV4020P-xxx	LongView dual DVI, USB, audio, CATx 50M
LV5020P-xxx	LongView dual DP, USB, audio, CATx 150M

When ordering products please replace the suffix "-xxx" with the suffix for your region, as follows:

-201 UK and Ireland

-202 European region

Server Room IT Management Solutions

Vertiv™ Avocent® "at-the-rack" access Solutions



When managing a server room, individually accessing each rack and device can waste a lot of time.

Vertiv offers you the solution which allows you to manage these devices from one central point. With the Vertiv™ Avocent® Rack Solutions you can access and control the server room without the need to physically be there. Not only do the rack solutions allow you to be in another room as the servers, but they also allow you to manage the servers from another building, country or continent as long as you have an Internet connection, through our digital IP range.

To sum up, by investing in the Vertiv™ Avocent® Rack Solutions, you benefit from:

- More TIME – connect to any device in the server room, wherever you are, and stop wasting the time that takes for you to actually be there
- Proximity – an Internet connection can bring you closer to your server room, anywhere you are on the globe
- Less Costs – by accessing the servers faster, you can decrease the down time, thus allowing your business to save more money
- Simplify work with ability to copy and paste data

Part Number	Description
AV104-400	4-port rackmount or desktop single-user KVM switch.
AV108-400	8-port rackmount or desktop single-user KVM switch with OSD
AV116-400	16-port rackmount or desktop single-user KVM switch with OSD
AV104BND4-400	4-port rackmount or desktop single-user KVM switch with 4 VGA cables
AV108BND8-400	8-port rackmount or desktop single-user KVM switch with OSD and 8 VGA cables
AV116BND8-400	16-port rackmount or desktop single-user KVM switch with OSD and 8 VGA cables
CBL0170	6-foot 26-pin to VGA target cable
CBL0171	12-foot 26-pin to VGA target cable
CBL0172	6-foot 26-pin to DP target cable
CBL0173	12-foot 26-pin to DP target cable
CBL0170-4	6-foot 26-pin to VGA 4-cable bundle
CBL0171-4	12-foot 26-pin to VGA 4-cable bundle
CBL0172-4	6-foot 26-pin to DP 4-cable bundle
CBL0173-4	12-foot 26-pin to DP 4-cable bundle
CBL0174	1-ft 26-pin to VGA Cascade cable
AV3108-xxx	8 port AutoView KVM with 1 local and 1 remote users, VM and CAC
AV3216-xxx	16 port AutoView KVM with 2 local and 1 remote users, VM and CAC
DSAVIQ-PS2M	Virtual Media server interface module for VGA video, PS/2 keyboard and mouse, and USB 2.0 virtual media w/ 14 in
USBIAC2-7	7 ft USB Integrated Access cable 2nd Gen.
USBIAC2-10	10 ft USB Integrated Access cable 2nd Gen.
AVRIQ-SRL	Server Interface module for VT100 Serial Based Devices for extended distance (requires UPD module)
UPD-IEC	Power Supply, Power Cord and 4 output cable to support up to 4 AVRIQ-SRL modules
MPUIQ-VMCHD	Server Interface Module for HDMI video, USB keyboard/mouse supporting virtual media, CAC and USB2.0.
MPUIQ-VMCHS	HIGH-RES/VM/CAC/USB2HS IQ MODULE
MPUIQ-VMCDV	Server Interface Module for DVI video, USB keyboard/mouse supporting virtual media, CAC and USB2.0
MPUIQ-VMCDP	Server Interface Module for DisplayPort video, USB keyboard/mouse supporting virtual media, CAC and USB2.0.

When ordering products please replace the suffix "-xxx" with the suffix for your region, as follows:

-201 UK and Ireland

-202 European region

Server Room IT Management Solutions

LCD Trays



Even though managing your infrastructure remotely gives you many benefits, there will be times when you will need to physically be there to add more hardware, memory, etc.

In order to do that, you need local access devices that get the job done efficiently. So, forget the crash carts, the long cable wires and wasting time by connecting/disconnecting the peripherals! Vertiv introduces you the built-in Vertiv™ Avocent® LCD tray, which allows you to save space and give you efficient access to the rack. Our products are developed smart, therefore offering you a better solution to managing your IT infrastructure.

The Vertiv™ Avocent® LCD Trays are no different, hence offering you the following benefits:

- More Space – being compact, our LCD trays consume a minimal amount of rack space
- Simplicity – the product is easy to mount and connect
- Efficiency – a better working environment equals more productivity
- Durability – our LCD trays are made to last!

The compact design is well-suited for the small to midsize business environment, data centre and server rooms. Vertiv Avocent LCD consoles are available as a standalone or with an 8- or 16-port KVM switch in the same 1U space.

Part Number	Description
LRA185KMM-xxx	1U 19" LCD console w/ USB touchpad and keyboard
LRA185KMM8-xxx	1U 19" LCD console w/ USB touchpad, keyboard and pre-mounted 8-ports AutoView 3108 switch
LRA185KMM16-xxx	1U 19" LCD console w/ USB touchpad, keyboard and pre-mounted 16-ports AutoView 3216 switch

When ordering products please replace the suffix "-xxx" with the suffix country Keyboard

SECTION 2

Enterprise IT Infrastructure Solutions for Data Centre

If you want to increase your profit, reduce your IT costs and streamline your data centre management, you are certainly looking for:

1. Remote Management

Remotely and securely access and manage data centre IT assets.

2. Centralisation

Centralise and standardise IT remote management.

3. Capacity Management and Planning

Get visibility into current data centre capacity and the ability to accurately forecast needs.

4. Power Management

Optimise your customers' data centre power requirements and ensure maximum availability of their infrastructure.

Enterprise IT Infrastructure Solutions for Data Centre Remote Management

With our technology, you can remotely manage any device, any location, any vendor, any time, securely.

This applies to servers and other IT and network devices (routers, switches, firewalls, etc). Administrators can control every connected device from anywhere they like, as if they were actually on site – even when the device itself can no longer communicate over the network. As a result, the response time and outage duration are shortened, thereby improving IT management efficiency and IT availability.

Serial Consoles

The Avocent® ACS serial consoles, part of Avocent's renowned enterprise class data centre products, offer in-band and out-of-band serial access to remotely manage IT devices anywhere in the world. With the new cellular feature, providing additional connectivity capabilities, the ACS8000 cellular builds on its robust feature set to address emergency situations such as accessing locked-up devices and loss of IP band connectivity.

Vertiv™ Avocent® ACS 8000

Deliver secure in-band and out-of-band visibility and control to downstream equipment in enterprise data centres, as well as cloud and colocation facilities. Now with cellular capabilities, the Vertiv™ Avocent® ACS8000 Cellular provides flexibility to access devices when wired networks are down (failover) or not available at the device location.

Vertiv™ Avocent® ACS 800

The Avocent® ACS 800 serial console provides serial access, environmental monitoring, IoT integration and remote networking capability to the Edge oriented market sectors of financial institutions, retail chains, education and others.



Section 2

Part Number	Description
ACS8008-EU-DAC-400	ACS8000 8 Port cellular with 4G/LTE dual AC
ACS8016-EU-DAC-400	ACS8000 16 Port cellular with 4G/LTE dual AC
ACS8032-EU-DAC-400	ACS8000 32 Port cellular with 4G/LTE dual AC
ACS8048-EU-DAC-400	ACS8000 48 Port cellular with 4G/LTE dual AC
ACS8008SAC-404	8-Port ACS8000 Console System with single AC Power Supply
ACS8008MDAC-404	8-Port ACS8000 Console System with dual AC Power Supply and Analog Modem
ACS8008MSDC-400	8-Port ACS8000 Console System with single DC Power Supply and Analog Modem
ACS8016SAC-404	16-Port ACS8000 Console System with single AC Power Supply
ACS8016DAC-404	16-Port ACS8000 Console System with dual AC Power Supply
ACS8016MDAC-404	16-Port ACS8000 Console System with dual AC Power Supply and Analog Modem
ACS8032SAC-404	32-Port ACS8000 Console System with single AC Power Supply
ACS8032MDAC-404	32-Port ACS8000 Console System with dual AC Power Supply and Analog Modem
ACS8032MDDC-400	32-Port ACS8000 Console System with dual DC Power Supply and Analog Modem
ACS8048SAC-404	48-Port ACS8000 Console System with single AC Power Supply
ACS8048DAC-404	48-Port ACS8000 Console System with dual AC Power Supply
ACS8048MDAC-404	48-Port ACS8000 Console System with dual AC Power Supply and Analog Modem
ACS8048MDDC-404	48-Port ACS8000 Console System with dual DC Power Supply and Analog Modem
RMK-88	0U Rack Mount Kit for ACS8000/ACS9000
RMK-89	1U Rack Mount Kit for ACS8000/ACS9000
ACS804MEAC-404	4-Port ACS800 Serial Console with analog modem, external AC/DC Power Brick - Jumper cord: Plug C14 to connector C13
RMK-91	Rack Mount Kit, 1U tray for ACS800
RMK-92	Rack Mount Kit, DIN-Rail mount for ACS800
RMK-93	Rack Mount Kit, wall mount for ACS800
ADB0045	SX 550m multi mode SFP fiber transceiver
ADB0047	LX/LH 10km single SFP fiber transceiver
ADB0017	RJ45 to DB25F cross converter
ADB0025	RJ45 to DB25M cross converter
ADB0036	RJ45 to DB9F cross converter
ADB0037	RJ45 to DB9M cross converter
ADB0039	RJ45 to RJ45 Sun/Cisco cross converter
ADB0040	RJ45 to RJ45 Rackable converter
ADB0200	RJ45 to DB9F s/t converter
ADB0210	RJ45 to DB9M s/t converter
CAB0017	RJ45 to DB25F cross cable
CAB0018	RJ45 to RJ45 s/t CAT5 cable
CAB0025	RJ45 to DB25M s/t cable
CAB0036	RJ45 to DB9F cross cable
CAB0045	RJ45 to RJ45 Sun/Cisco cross cable
CAB0046	RJ45 to DB25M cross cable
CAB0286	Serial Cable - Cable DB-9 female to DB-9 female crossover 6 feet
CBL0034	CSP/CCM appliance to ACS console server RJ45 adapter
CON0091	DB9M to DB9M gender changer
CON0092	DB25F to DB25F gender changer

**Enterprise IT
Infrastructure Solutions
for Data Centre**
**Vertiv™ Avocent®
Universal Management
Gateway**



Key Benefits

- Consolidated Management: Combines the functions of KVM over IP, serial console over IP, rack PDU, SP, and environmental sensor management into a single chassis
- Always-On: Highly reliable, local, remote and out-of-band access to data centre infrastructure ensures that monitoring, control, and management can be done at any time, from any place
- Enhanced Security: Shields embedded service processors from unauthorised access; reducing the risk of malicious intrusion
- Streamlined Installation: Leverages pre-built service processor profiles for discovery and management, streamlining discovery and setup for newly installed hardware
- Universal Connectivity: Protects infrastructure investments and eases data centre transitions with integrated support for a broad range of IT platforms
- Multi-Tenant Design: Creates a secure environment, improving compliance and auditing tasks for customers considering Colocation and Cloud implementations.
- Includes HTML5 viewer support, no longer the need to exclusively rely on Java for KVM sessions

VERTIV™ AVOCENT® UNIVERSAL MANAGEMENT GATEWAY

Part #	Description
Vertiv™ Avocent® Universal Management Gateway	
UMG4000-400	UMG 4000 40P(AS) 512SP 5000DP
Vertiv™ Avocent® Universal Management Gateway Adapters	
UMIQ-V2	UM KVM MODULE - VGA+SP DUAL RJ45
Vertiv™ Avocent® Universal Management Gateway Accessories	
RMK-50	RACK-MOUNT KIT FOR UM APPLIANCE
WMK-01	WALL-MOUNT KIT FOR UM APPLIANCE
UMIQ-PS	POWER SUPPLY MODULE W/CABLE

Enterprise IT Infrastructure Solutions for Data Centre

Vertiv™ Avocent® MergePoint Unity™



The Vertiv™ Avocent® MergePoint Unity™ switch is the next generation KVM over IP switch.

This industry-leading switch provides IT administrators a complete and secure remote management solution to access and control servers, networking equipment and other devices found in data centres and branch offices.

Key Benefits

- Advanced Remote Management - Provides secure and remote, out-of-band connections directly to the physical KVM, USB and serial ports to complement existing in-band software management tools
- Meet Service Level Agreements and Minimise Downtime - Unified approach enables IT administrators a faster method to diagnose, reconfigure or restore equipment
- Virtual Media - Enables USB media such as CD-ROMs, flash memory and external drives to be virtually attached to a remote server's USB port
- CAC/Smart Card Support - Utilizing the virtual media capabilities remote or local users can map a USB-based smart card reader to the attached servers and authenticate using their smart cards
- Enhanced Serial Adapters - Supports standard, remote SSH connections to the attached serial devices and includes electronic pin-out options for quick and easy connections to the console ports on Cisco network equipment
- Power Device Port - Connect supported rack PDUs for integrated power control, measurement and reporting
- FIPS 140-2 Compliant Cryptography - The FIPS mode of operation uses an embedded FIPS 140-2 certified OpenSSL cryptographic module (Certificate #1051)
- Includes HTML5 viewer support, no longer the need to exclusively rely on Java or ActiveX for KVM sessions

Part Number	Description
MPU108EDAC-001	8 port, 1 digital KVM path, dual AC Power Supply
MPU2016DAC-001	16 port, 2 digital KVM paths, dual AC Power Supply
MPU2032DAC-001	32 port, 2 digital KVM paths, Dual AC Power Supply
MPU4032DAC-001	32 port, 4 digital KVM paths, dual AC Power Supply
MPU8032DAC-001	32 port, 8 digital KVM paths, dual AC Power Supply
MPUIQ-VMCHD	Server Interface Module for HDMI video, USB keyboard/mouse supporting virtual media, CAC and USB2.0.
MPUIQ-VMCHS	HIGH-RES/VM/CAC/USB2HS IQ MODULE
MPUIQ-VMCHS32	HIGH-RES/VM/CAC/USB2HS IQ MODULE 32PACK
MPUIQ-VMCDV	Server Interface Module for DVI video, USB keyboard/mouse supporting virtual media, CAC and USB2.0
MPUIQ-VMCDP	Server Interface Module for DisplayPort video, USB keyboard/mouse supporting virtual media, CAC and USB2.0.
MPUIQ-SRL	MergePoint Unity switch serial IQ module
SFIQ-VGA	Small Form Factor, Server Interface Module for VGA, USB keyboard, mouse. Supports virtual media, CAC and USB 2.0. Used with all MPU, AV3108 and AV3216 appliances.
SFIQ-VGA08	Small Form Factor, Server Interface Module for VGA, USB keyboard, mouse. Supports virtual media, CAC and USB 2.0. Used with all MPU, AV3108 and AV3216 appliances. (8 pack)
CBL0181	12" USB A to Micro USB B cable
CBL0182	8" USB A to Micro USB B cable
CBL0183	30" USB A to Micro USB B cable
UPD-IEC	Power Supply, Power Cord and 4 output cable to support up to 4 AVRIO-SRL modules

IT Infrastructure Solutions for Data Centre and Control Rooms

Vertiv™ Avocent® Matrix Digital High Performance KVM System



The next-generation version of Vertiv™ Avocent® High Performance KVM products leverages the experience Vertiv has gained with the Vertiv™ Avocent® AMX™ and HMX product lines to create the best-of-breed platform.

This unified approach enables the Vertiv™ Avocent® Matrix to combine the instantaneous switch time of the Vertiv™ Avocent® AMX system with the digital quality and advanced management features of the Vertiv™ Avocent® HMX system.

Platform Approach

The platform's design creates a future-proof environment where customers can expand functionalities as new technology becomes available, such as alterations in display or peripheral standards.

Video Compression algorithm enables a pixel-accurate, lossless video experience with lag-free, real-time interaction to computing equipment via any USB enabled device.

Unified Management

Compatibility with LDAP and other user authentication frameworks allows the Vertiv™ Avocent® Matrix High Performance KVM to be added easily to existing workflows and setups.

Part Number	Description
Matrix High-Performance KVM	
MXR5110-xxx	Matrix Receiver, Direct Connect, CATX, USB, single DVI-I, audio
MXS5132-xxx	Matrix 32-port rack mountable CATX switch with flexible ports and redundant power
MXS5120-xxx	Matrix 20-port rack mountable CATX switch with flexible ports
MXT5110-DVI	Matrix Transmitter, Direct Connect, Copper, DVI-D with CBL0086 included
MXT5120-VGA	Matrix Transmitter, Direct Connect, Copper, VGA with CBL0087 included
DMK-08	Desk Mount Kit for Matrix Receiver
PSC0004	power supply for MXR5110
CBL0086	USB keyboard & mouse & DVI-D video cable & audio - 3 ft
CBL0087	USB keyboard & mouse & VGA video cable & audio - 3 ft
CBL0088	USB keyboard & mouse & VGA video cable & audio - 6 ft
RMK-74	Matrix 1U Rack Mount for 3 Transmitters or 2 Receivers
RMK-72	Replacement Rack Mount for MXS5132/MXS5120 Switch

When ordering products please replace the suffix "-xxx" with the suffix for your region, as follows:

- 201 UK and Ireland
- 202 European region



Part Number	Description
HMX High-Performance KVM	
HMXAMGR24-xxx	HMX Advanced Manager hardware 24 node
HMX5150T-DP	HMXTX SNGL DP,USB,Audio, Zero U
HMX5150T-DVID	HMXTX SNGL DVID,USB,Audio, Zero U
HMX5150T-VGA	HMXTX SNGL VGA,USB,AUDIO-0U
HMX5100T-xxx	HMX TX single DVI-D, USB, audio, SFP- transmitter
HMX5200T-xxx	HMX TX dual DVI-D, USB, audio, SFP- transmitter
HMX6200T-xxx	HMX TX dual DVI-D,QSXGA,USB,audio,SFP- transmitter
HMX6210T-xxx	HMX TX dualDVI-D,QSXGA,USB,audio,SFP,VNC- transmitter
HMX8000T-400	DH 4K,audio,USB2.0, 10GB-Tx
HMX5100R-xxx	HMX RX single DVI-D, USB, audio, SFP-receiver
HMX5200R-xxx	HMX RX dual DVI-D, USB, audio, SFP-receiver
HMX6200R-xxx	HMX RX dual DVI-D,QSXGA,USB,audio,SFP-receiver
HMX8000R-400	DH 4K,audio,USB2.0, 10GB-Rx
HMX6500R-400	DH-DP RX, Audio, USB 2.0, Virtual Machine
HMX-MM-10G-SFP	10Gb SFP Multi Mode Fiber
HMX-SM-10G-SFP	10Gb SFP Single Mode Fiber
USB6000RX-xxx	LAN USB 2.0 Extender Receiver
USB6000RX	LAN USB 2.0 Extender Receiver
USB6000TX	LAN USB 2.0 Extender Transmitter
LC-MM-SFP	SFP Multi Mode Fibre Module LC
LC-SM-SFP	SFP Multi Single Fibre Module LC
RJ45-CATX-SFP	1000BASE-T Copper SFP Transceiver
PSC0005	Power Supply HMX 5000/6000 TX/RX
RMK-97	Rackmount kit for 2 HMX 5000/6000
RMK-82	Rackmount kit for 1 HMX 5000/6000
RMK-83	VESA mount kit for 1 HMX 5000/6000
RMK-104	Rackmount kit for HMX 8000
HMXLIC-50	HMX Advanced Manager 50 node lic
HMXLIC-100	HMX Advanced Manager 100 node lic
HMXLIC-UNL	HMX Advanced Manager unlimited node lic
HMXLIC-50BDL	HMX Advanced Mgr PRI/BKUP 50 node lic
HMXLIC-100BDL	HMX Advanced Mgr PRI/BKUP 100 node lic
HMXLIC-UNLBDL	HMX Advanced Mgr PRI/BKUP unlimited lic
HMXLIC-UG50-100	HMX License Upgrade from 50 to 100
HMXLIC-UG50-UNL	HMX License Upgrade from 50 to Unlimited
HMXLIC-UG100-UNL	HMX License Upgrade from 100 to Unlimited
HMXLIC-UG50-100BD	HMX License Upgrade from 50 to 100 Bundle(Primary & Backup)
HMXLIC-UG50-UNBDL	HMX License Upgrade from 50 to Unlimited Bundle(Primary & Backup)
HMXLIC-UG100-UNBDL	HMX License Upgrade from 100 to Unlimited Bundle(Primary & Backup)
CBL0175	VGA to DVI-D Smart KVM Cable for use with HMX, AMX, Matrix
CBL0176	USB-B 2.0 Female to Male USB-B Cable for use with HMX, AMX, Matrix
ADB0211	USB to PS2 adapter for use with HMX, AMX, Matrix
RMPSU-16-400	16 port PSU for HMX and Matrix
RMPSU-8-400	8 port PSU for HMX and Matrix
RMPSU-16-001	16 port PSU for HMX and Matrix
RMPSU-8-001	8 port PSU for HMX and Matrix
ADB0048	RMPSU 12V to 5V 6ft
ADB0049	RMPSU 12V to 5V 9ft
RMPSU-PS	Replaceable PSU for RMPSU
CBL0143	2M 3PIN LOCKABLE 12V POWER
TBR02	BRIDGING DEVICE TO LEGACY HMX/AMX SYSTEM

When ordering products please replace the suffix "-xxx" with the suffix for your region, as follows:

-201 UK and Ireland

-202 European region

Enterprise IT Infrastructure Solutions for Data Centre

Vertiv™ Avocent® DSView™ Management software



Centralisation

IT administrators need to access IT devices from anywhere, carry out diagnoses and implement changes regularly. Regardless of the condition or status of the operating system or network, we offer a software solution which provides a secure, centralised management solution for all connected IT assets – the Vertiv™ Avocent® DSView management software.

When used in conjunction with serial console appliances, rack PDUs, service processor gateways and KVM appliances, the hardware and software combine to allow IT administrators to remotely access, monitor and control target devices on multiple platforms at numerous locations—anywhere, anytime.

When using Vertiv™ Avocent® DSView software you benefit from:

- Easier Administration
- A secure, browser-based user interface for central administration of the entire integrated IT
- Reliable Access
- Hub-and-spoke architecture allows for high availability and decentralised, consolidated and location-independent access
- Easy Expansion
- Easy to incorporate new technologies and provides an integration option for VMware, Citrix and Hyper-V – in addition to an API for own developments and third party tools and systems
- Higher Security
- Supports seamless integration with existing security policies, offers various authentication mechanisms and encrypts the entire data traffic

Part Number	Description
DSV4.5-Base	DSView Base License, Unlimited Spoke, Zone, Users and API
DSV4.5-100Dev	DSView 100 Device Count
DSV4.5-500Dev	DSView 500 Device Count
DSV4.5-1000Dev	DSView 1000 Device Count
1YRSLV-100Dev	DSView 1 year Silver Subscription 100 Device Count
1YRSLV-500Dev	DSView 1 year Silver Subscription 500 Device Count
1YRSV-1000Dev	DSView 1 year Silver Subscription 1000 Device Count
1YRGLD-100Dev	DSView 1 year Gold Subscription 100 Device Count
1YRGLD-500Dev	DSView 1 year Gold Subscription 500 Device Count
1YRGLD-1000Dev	DSView 1 year Gold Subscription 1000 Device Count

Service Offering for Channel

The Importance of Service Coverage

Vertiv supports any application with an extensive service offering including installation, start-up, commissioning, maintenance, replacements, 24/7 remote monitoring and diagnostics and much more. Our remote diagnostics and preventive monitoring LIFE™ Service is adding value providing real-time information to take decision, as it allows early detection of anomalies and immediate reaction in case of alarms.

Benefits:

- Assured critical power delivery
- Optimised use of your IT staff
- Simplified small site UPS deployment and maintenance
- Instant access to power protection information
- Improved protection for your IT investment

Vertiv™ LIFE™ Services



With Vertiv™ LIFE™ Services you can be sure to experience enhancements in both uptime, as well as operational efficiency, giving you unparalleled system protection and support.

All equipment covered with Vertiv LIFE Services maintains constant contact with Vertiv's service organisation 24/7.

You can benefit from Vertiv LIFE Services throughout the entire product lifecycle during both warranty and after warranty periods.

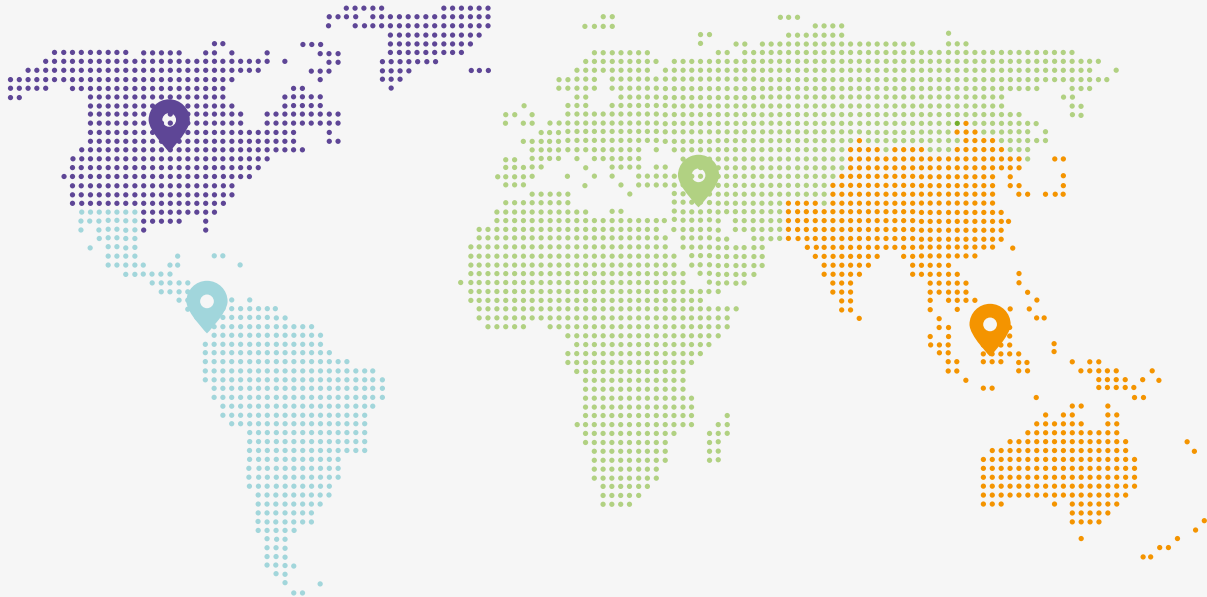
OUR PURPOSE

We believe there is a better way to meet the world's accelerating demand for data - one driven by passion and innovation.

OUR PRESENCE

GLOBAL PRESENCE

Manuf. and Assembly Locations **19**
Service Centres **270+**
Service Field Engineers **2,700+**
Technical Support/Response **330+**
Customer Experience Centres/Labs **17**



US AND CANADA

Manuf. and Assembly Locations **7**
Service Centres **120+**
Service Field Engineers **850+**
Technical Support/Response **120+**
Customer Experience Centres/Labs **4**



LATIN AMERICA

Manuf. and Assembly Locations **1**
Service Centres **20+**
Service Field Engineers **300+**
Technical Support/Response **25+**
Customer Experience Centres/Labs **2**



EUROPE, MIDDLE EAST AND AFRICA

Manuf. and Assembly Locations **5**
Service Centres **70+**
Service Field Engineers **600+**
Technical Support/Response **95+**
Customer Experience Centres/Labs **6**



ASIA PACIFIC

Manuf. and Assembly Locations **6**
Service Centres **60+**
Service Field Engineers **950+**
Technical Support/Response **90+**
Customer Experience Centres/Labs **5**

Vertiv United Kingdom

Fraser Road, Priory Business Park, Bedford,
MK44 3BF, United Kingdom
Ph: +44 (0)12 3483 6400
emea.partnermarketing@vertiv.com

Vertiv Germany

Vertiv GmbH
Lehrer-Wirth-Str. 4
D - 81829 München
Ph. + 49- 89 -90 50 07 - 0
Fax + 49- 89- 90 50 07 - 37
DACH.Channel@vertiv.com

Vertiv Austria

Modecenterstrasse 22,
1030 Wien
Ph. +43 1 33189 0
emea.partnermarketing@vertiv.com

Vertiv Switzerland

Vertiv Infrastructure AG
Bruggacherstrasse 16
8117 Fällanden
Ph. +41 44 806 54 54
Fax: +41 44 806 54 64
Service 24/7: +41 44 456 50 60
emea.partnermarketing@vertiv.com

Vertiv France

Bâtiment Liège
1 place des Etats-Unis - 94150 Rungis
Ph. +33 1 48 84 40 90
emea.partnermarketing@vertiv.com

Vertiv Italy

Via Gioacchino Rossini, 6
20098 - San Giuliano Milanese - Milano
Ph. +39 02 982501
Fax +39 02 98250273
emea.partnermarketing@vertiv.com

Vertiv Spain

Edificio Oficor C/ Proci3n 1-3
28023 Madrid
Ph. +34 91 414 00 30
Fax +34 91 662 37 76
emea.partnermarketing@vertiv.com

Vertiv Benelux BV

(Belgium, Netherlands & Luxembourg)
Druivenstraat 3
Breda 4816 KB - The Netherlands
Ph. +31 76 578 1600
Fax: +31 76 578 1625
emea.partnermarketing@vertiv.com

Vertiv Sweden

(Nordics Region)
Vertiv Sweden AB
Textilgatan 29
SE-120 30 Stockholm
Ph. +46 8 721 6000
Fax +46 8 721 7177
emea.partnermarketing@vertiv.com

Vertiv Poland

Ul. Szturmowa 2A
PL - 02-678 Warszawa
Ph.+48 22 607 20 84
Fax +48 22 458 92 61
emea.partnermarketing@vertiv.com

Vertiv Russia Belarus

115035, Россия, Москва,
Космодамианская наб., д.52, стр.5, эт.13
T: +7 (495) 755-7799
ru.partners@vertiv.com

Vertiv Turkey

Şerifali Mah. Turcan Cad. No:60 34775
Ümraniye-İstanbul
Ph. +90 216 586 79 00
Fax +90 216 586 79 79
emea.partnermarketing@vertiv.com

Vertiv UAE

(MEA Head Office)
Vertiv Middle East DMCC , 801 One-JLT,
Jumeirah Lake Towers, Dubai PO Box
337122, United Arab Emirates
Ph. +971 4 510 4200w
emea.partnermarketing@vertiv.com

Vertiv Nigeria

(Central Africa Region)
Plot 16/17 Water Corporation Drive
| Victoria Island | Lagos, Nigeria
Ph. +234 1 342 9073
Fax +234 1 280 2271
emea.partnermarketing@vertiv.com

Vertiv South Africa

(Southern Africa Region)
Building 17, Thornhill Office Park, 94
Bekker Road, Midrand 1686, South Africa,
Ph. +27 11 284 9777
Fax +27 11 608 0177
emea.partnermarketing@vertiv.com

Vertiv Morocco

(North West Africa Region)
Zénith Milénium Immeuble 2, sidi Maarouf,
20190 Casablanca, Morocco
+212 661 932 550
emea.partnermarketing@vertiv.com

Vertiv Kenya

Baobab Suite, 1st Floor,
Riverside Green Suites,
Riverside Drive,
Nairobi, Kenya.
Ph. +254716486032
emea.partnermarketing@vertiv.com



Vertiv.com | Fraser Road, Priory Business Park, Bedford, MK44 3BF, United Kingdom

© 2020 Vertiv Group Corp. All rights reserved. Vertiv™ and the Vertiv logo are trademarks or registered trademarks of Vertiv Group Corp. All other names and logos referred to are trade names, trademarks or registered trademarks of their respective owners. While every precaution has been taken to ensure accuracy and completeness here, Vertiv Group Corp. assumes no responsibility, and disclaims all liability, for damages resulting from use of this information or for any errors or omissions. Specifications, rebates and other promotional offers are subject to change at Vertiv's sole discretion upon notice.