

User Manual Easy UPS SNMP Card APVS9601

Important Safety Information

Read the instructions carefully and look at the equipment to become familiar with the device before trying to install, operate, service or maintain it. The following special messages may appear throughout this document or on the equipment to warn of potential hazards or to call attention to information that clarifies or simplifies a procedure.



The addition of this symbol to a Danger or Warning product safety label indicates that an electrical hazard exists that will result in personal injury if the instructions are not followed.



This is the safety alert symbol. It is used to alert you to potential personal injury hazards. Obey all safety messages that follow this symbol to avoid possible injury or death.

⚠ DANGER

DANGER indicates a hazardous situation which, if not avoided, **will result in** death or serious injury.

⚠ WARNING

WARNING indicates a hazardous situation which, if not avoided, **could result in** death or serious injury.

⚠ CAUTION

CAUTION indicates a hazardous situation which, if not avoided, **could result in** minor or moderate injury.

NOTICE

NOTICE is used to address practices not related to physical injury.

Product Description

Integrated with SchneiderUPS software, devices with the SNMP Card installed can be monitored and controlled in the LAN. These devices can manage using SNMP Protocol versions 1, 2c and 3 standards.

APVS9601 SNMP Card:

- Provides support for SchneiderUPS Network Shutdown.
- Supports using a Dynamic Host Configuration Protocol (DHCP) to provide the network (TCP/IP) values of the NMC.

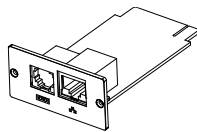
Devices in which you can install the SNMP Card

The SNMP Card can be installed in any compatible device that has an Intelligent Card Slot, including:

- Easy UPS On-Line: SRV series UPS

Package Contents

The packaging is recyclable; save it for reuse or dispose of it properly.



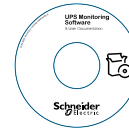
(1)

SNMP Card



(1)

User manual



(1)

Utility CD

Disclaimer

Schneider Electric is not responsible for damage sustained during reshipment of this product.



The SNMP Card is sensitive to static electricity. When handling the SNMP Card, touch only the end plate while using one or more of these electrostatic-discharge devices (ESDs): wrist straps, heel straps, toe straps, or conductive shoes.

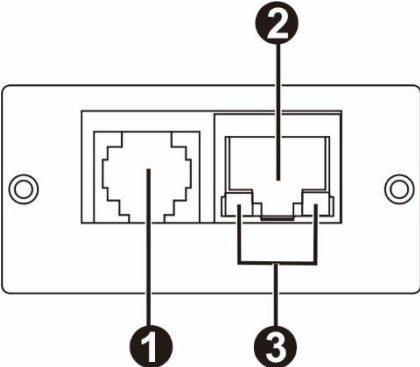
Please recycle



The shipping materials are recyclable. Save them for later use, or dispose of them appropriate.

Product Overview

Front Panel



①	Sensor port	Connects SNMP card to temperature or smoke sensor.
②	10/100 Base-T connector	Connects SNMP card to the Ethernet network.
③	Status LED	See “Status LED”.

Status LED

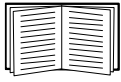
Color LED	Condition	Description
100M LED (Green)	Flash	Port is operating at 100Mbit/s
	Off	Card is not connected to the network
10M LED (Yellow)	Flash	Port is operating at 10Mbit/s
	Off	Card is not connected to the network

Specifications

Physical	Dimensions with package Width x Height x Depth	168 mm (6.61in) x 42 mm (1.65in) x 132 mm (5.2in)
	Dimensions without package Width x Height x Depth	47 mm (1.85in) x 25 mm (0.98in) x 80 mm (3.15 in)
	Weight with package	0.3 kg (0.66 lb)
	Weight without package	0.11 kg (0.24 lb)
Temperature	Operating	0 to 40°C (32 to 104°F)
	Storage	-15 to 50°C (5 to 122°F)
Humidity	Operating	0 to 95% relative humidity, non-condensing
Supported Protocol	Network	Auto-sense 10/100 Mbps Fast Ethernet RJ45 LAN Connector
	Network Protocol	TCP/IP, UDP, SNMP-V1, SNMP-V2, SNMP-V3
	SNMP MIB	RFC1213, RFC1628

Installation

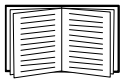
Install the SNMP card



You do not need to turn off power to install the SNMP Card in a supported Easy UPS.



The SNMP Card is sensitive to static electricity. When handling the SNMP Card, touch only the end plate while using one or more of these electrostatic-discharge devices (ESDs): wrist straps, heel straps, toe straps, or conductive shoes.

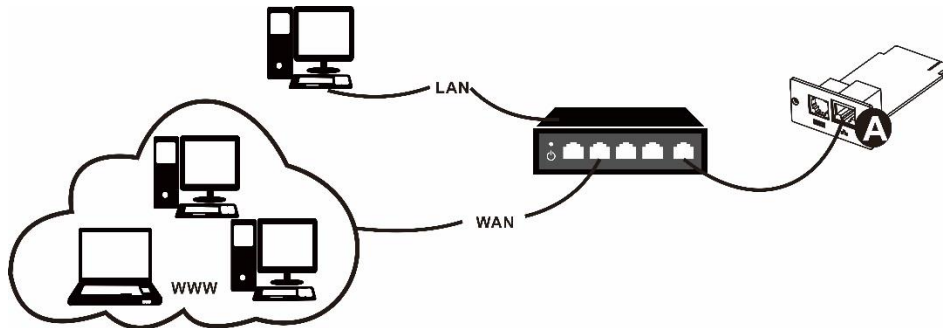


For the location of the UPS Intelligent Card Slot, see the UPS User Manual.

1. Remove the cover of Intelligent Card Slot on the back of the UPS and retain the screws.
2. Slide the card into the open slot and secure with the screws from step 1. (See below chart)



3. Connect a network interface cable to the 10/100 Base-T network connector (RJ-45) **A** on the SNMP Card.



When the network interface cable is connected, the SNMP Card will attempt to obtain an IP address via DHCP. See “Configuration methods” on page 6.

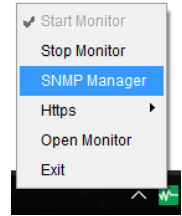
Configure the SNMP Card

See “Quick Configuration” on page 6.

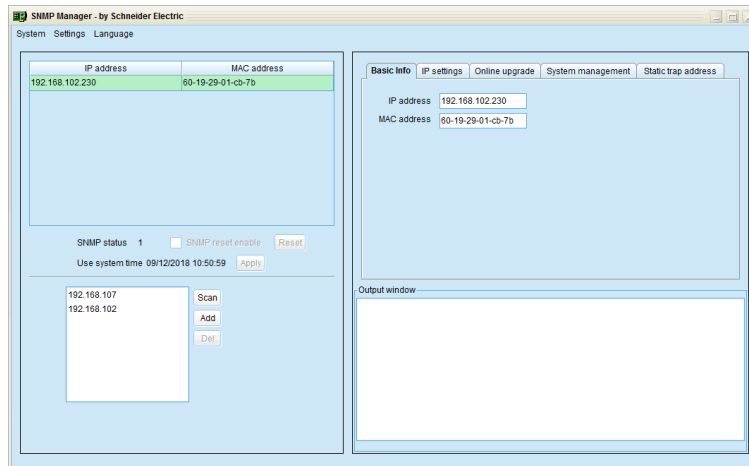
Quick Configuration

Configuration Method

1. Please install SchneiderUPS monitoring software in your PC. After software is installed successfully, it will pop up a plug icon in the tray. Select “SNMP manager” by clicking right button of the mouse.



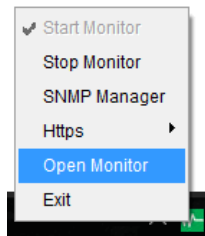
2. Enter specific IP address to search all SNMP devices in LAN. (The SNMP manager will automatically collect the IP address from sever by default via a DHCP server. It will apply default IP address of 192.168.102.230, default subnet mask as 255.255.255.0, and default gateway as 192.168.102.254 without a DHCP server.



3. You can modify IP setting, online upgrade, password management, and static trap address setting in SNMP Manager interface. It is necessary to enter password for any medications. The default password is 12345678.

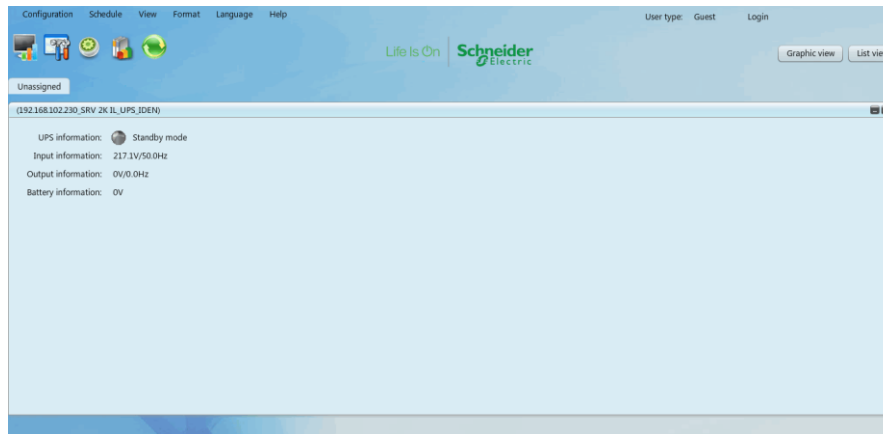
Monitoring

1. After all setting is complete, select “Open Monitor” by clicking right button of the mouse.



NOTE: For enhanced security, change the SNMP version to V3 in System management and change the default password.

2. Then, it will open the monitor view. Refer to below chart.



Please check Schneider UPS monitoring software manual in the install location or in the CD.

Schneider Electric Worldwide Customer Support

Customer support for this or any other Schneider Electric product is available at no charge in any of the following ways:

- Visit the Schneider Electric website to access documents in the Schneider Electric Knowledge Base and to submit customer support requests.
 - **www.apc.com** (Corporate Headquarters)
Connect to localized Schneider Electric websites for specific countries, each of which provides customer support information.
 - **www.apc.com/support/**
Global support searching Schneider Electric Knowledge Base and using e-support.
- Contact the Schneider Electric Customer Support Center by telephone or e-mail.
 - Local, country specific centers: go to **www.apc.com/support/contact** for contact information.

For information on how to obtain local customer support, contact the Schneider Electric representative or other distributor from whom you purchased your Schneider Electric product.