



HP ProBook x360 11 G1 EE Notebook PC (1EK09PA)

Active as of 21/12/2016



Overview

Education-ready and adaptable to every style of learning

Improve learning outcomes, save teacher time, and engage students like never before with the powerful, durable, flexible HP ProBook x360 11 G1 Education Edition. It converts easily from a notebook to a tablet to a stand to a tent and moves seamlessly between the classroom and home.

Improve learning outcomes, save teacher time, and engage students like never before with the powerful, durable, flexible HP ProBook x360 11 G1 Education Edition.

Built to survive students and the school day

Make life simple for IT and educators with an easy-to-carry PC that's designed to protect against bumps and pass MIL-STD 810G¹, with Corning® Gorilla® Glass 4, co-molded industrial rubber, and pick- and minor spill-resistant keyboard.

Touch or tap

Annotate, draw, solve math problems, and take notes right on your screen with integrated premium touch technology and an optional Active Pen³ that supports an authentic digital inking experience similar to paper and pen or paintbrush.

Encourage blended learning

Flip, fold, and learn with a 360° hinge and optional dual cameras² that adapt to every activity. Create content in notebook mode, collaborate in stand mode, share and present in tent mode, and read, write, and draw in tablet mode.

Specifications

Operating system

Windows 10 Pro 64

Processor family

Intel® Celeron® processor

Processor

Intel® Celeron® N3350 with Intel HD Graphics 500 (1.1 GHz, up to 2.4 GHz with Intel Turbo Boost Technology, 2 MB cache, 2 cores)

MDA key selling point

Windows 10 Pro 64

Chipset

Chipset is integrated with processor

Management features

HP SoftPaq Download Manager (SDM); HP System Software Manager (SSM); LANDESK Management

Environmental

Low halogen

Security management

TPM 2.0; Security lock slot

Memory, standard

4 GB DDR3L-1600 SDRAM (onboard)

Hard drive description

64 GB eMMC

Graphics

Integrated

Graphics

Intel® HD Graphics 500

Ports

2 USB 3.1 Gen 1; 1 USB Type-C™ (Data transfer only); 1 HDMI 1.4b; 1 AC power connector; 1 RJ-45; 1 headphone/microphone combo jack

Expansion slots

1 microSD

Camera

World-facing 1080p secondary camera (select models); User-facing 720p camera

Audio features

HD audio; Dual speakers; Dual digital microphones; Headphone/microphone combo jack

Pointing device

Clickpad with multitouch gestures

Keyboard

Full-sized, spill and pick-resistant

Network interface

Realtek RTL8111HSH Gigabit Ethernet

Wireless

Intel® Dual Band Wireless-AC 7265 802.11a/b/g/n/ac (2x2) WiFi and Bluetooth® 4.2 Combo (non-vPro)

Power

45 W Smart AC adapter

Battery type

HP Long Life 3-cell, 41 Wh Li-ion

Energy efficiency

ENERGY STAR® certified

Minimum dimensions (W x D x H)

20.79 x 30.24 x 1.99 cm

Weight

Starting at 1.45 kg

Software

HP Hotkey Support; HP Support Assistant; Skype; Buy Office; Bing Search; HP JumpStart; HP Noise Cancellation; HP ePrint Driver+JetAdvantage; HP School Pack (includes HP Classroom Manager, HP Adaptive Learning created by Fishtree, Corinth Classroom, HP Simple Sign-on created by Classlink and more)

Warranty

Limited 3-year and 1-year warranty options available, depending on country, 3-year limited warranty on HP Long Life Battery (only available with 3-year platform warranty). Optional HP Care Pack Services are available to extend your protection beyond the standard warranty. For more details visit: hp.com/go/cpc.¹⁹

Overview

- 1 MIL-STD testing is not intended to demonstrate fitness for U.S. Department of Defense contract requirements or for military use. Test results are not a guarantee of future performance under these test conditions. Damage under the MIL STD test conditions or any accidental damage requires an optional HP Accidental Damage Protection Care Pack.
- 2 Requires optional rear-facing camera on select configurations only. Front-facing camera is standard on all models.
- 3 Sold separately or as an add-on feature.

Specifications

- 19 HP Care Packs are sold separately. Service levels and response times for HP Care Packs may vary depending on your geographic location. Service starts on date of hardware purchase. Restrictions and limitations apply. For details, visit www.hp.com/go/cpc. HP services are governed by the applicable HP terms and conditions of service provided or indicated to Customer at the time of purchase. Customer may have additional statutory rights according to applicable local laws, and such rights are not in any way affected by the HP terms and conditions of service or the HP Limited Warranty provided with your HP Product.

Data sheet (1)

HP ProBook x360 11 G1 EE Notebook PC (AP English)

Datasheet for HP ProBook x360 11 G1 EE Notebook PC

Quick specs (1)

HP ProBook x360 11 G1 EE

Research or buy HP printers, desktops, laptops, servers, storage, enterprise solutions and more at the Official HP Inc. Website

Success story (2)





New England Institute of Technology relies on high performance of HP technology

To meet its needs for reliability and high-end performance, New England Institute of Technology standardized on HP products ranging from HP All-in-One and EliteBook PCs to HP Digital Signage. HP Workstations are showcased in the new HP Gaming Lab.

Penn-Delco educators and students choose HP ProBook for 1:1 program

To ensure its high school students graduate college-ready, Penn-Delco School District decided to launch a 1:1 PC program. The district evaluated a variety of devices and the top choice of student and educators alike was the HP ProBook Notebook PC.

Images - Product (4)

			
<p>Center facing</p>	<p>Left facing</p>	<p>Right facing</p>	<p>Rear facing upright</p>
<p>54 x 41 (jpg) 54 x 41 (jpg) 54 x 41 (png) 54 x 41 (png) 100 x 70 (jpg) 100 x 70 (jpg) 96 x 72 (jpg) 96 x 72 (jpg) 96 x 72 (png) 96 x 72 (png) 99 x 74 (png) 99 x 74 (png) 153 x 115 153 x 115 (png) (png) 180 x 135 180 x 135 (png) (png) 240 x 180 240 x 180 (jpg) (jpg) 240 x 180 240 x 180 (png) (png) 247 x 185 247 x 185 (png) (png) 170 x 190 170 x 190 (jpg) (jpg) 257 x 193 257 x 193 (png) (png) 320 x 240 320 x 240 (jpg) (jpg) 320 x 240 320 x 240 (png) (png) 474 x 356 474 x 356 (png) (png)</p>	<p>54 x 41 (jpg) 54 x 41 (jpg) 54 x 41 (png) 54 x 41 (png) 100 x 70 (jpg) 100 x 70 (jpg) 96 x 72 (jpg) 96 x 72 (jpg) 96 x 72 (png) 96 x 72 (png) 99 x 74 (png) 99 x 74 (png) 153 x 115 153 x 115 (png) (png) 180 x 135 180 x 135 (png) (png) 240 x 180 240 x 180 (jpg) (jpg) 240 x 180 240 x 180 (png) (png) 247 x 185 247 x 185 (png) (png) 170 x 190 170 x 190 (jpg) (jpg) 257 x 193 257 x 193 (png) (png) 320 x 240 320 x 240 (jpg) (jpg) 320 x 240 320 x 240 (png) (png) 474 x 356 474 x 356 (png) (png)</p>	<p>54 x 41 (jpg) 54 x 41 (jpg) 54 x 41 (png) 54 x 41 (png) 54 x 41 (jpg) 54 x 41 (jpg) 54 x 41 (png) 54 x 41 (png) 54 x 41 (jpg) 54 x 41 (jpg) 54 x 41 (png) 54 x 41 (png) 54 x 41 (png) 54 x 41 (png) 54 x 41 (png) 54 x 41 (png) 54 x 41 (png) 54 x 41 (png) 54 x 41 (png) 54 x 41 (png) 100 x 70 (jpg) 100 x 70 (jpg) 100 x 70 (jpg) 100 x 70 (jpg) 100 x 70 (jpg) 100 x 70 (jpg) 100 x 70 (jpg) 100 x 70 (jpg) 96 x 72 (jpg) 96 x 72 (jpg) 96 x 72 (jpg) 96 x 72 (jpg) 96 x 72 (jpg) 96 x 72 (jpg) 96 x 72 (jpg) 96 x 72 (jpg) 96 x 72 (png) 96 x 72 (png) 96 x 72 (png) 96 x 72 (png) 96 x 72 (png) 96 x 72 (png) 96 x 72 (png) 96 x 72 (png) 96 x 72 (png) 96 x 72 (png) 99 x 74 (png) 99 x 74 (png) 99 x 74 (png) 99 x 74 (png) 99 x 74 (png) 99 x 74 (png) 99 x 74 (png) 99 x 74 (png)</p>	<p>54 x 41 (jpg) 54 x 41 (png) 100 x 70 (jpg) 96 x 72 (jpg) 96 x 72 (png) 99 x 74 (png) 153 x 115 180 x 135 (png) (png) 240 x 180 240 x 180 (jpg) (png) 247 x 185 170 x 190 (png) (jpg) 257 x 193 320 x 240 (png) (jpg) 320 x 240 513 x 385 (png) (png) 400 x 400 400 x 400 (jpg) (png) 573 x 430 800 x 600 (png) (png) 1659 x 1246 3002 x 1914 (png) (png) 3068 x 2006 (jpg)</p>

513 x 385 (png)	513 x 385 (png)
400 x 400 (jpg)	400 x 400 (jpg)
400 x 400 (png)	400 x 400 (png)
573 x 430 (png)	573 x 430 (png)
800 x 600 (png)	800 x 600 (png)
1659 x 1246 (png)	1659 x 1246 (png)
3052 x 2003 (png)	3052 x 2003 (png)
3050 x 2112 (jpg)	3050 x 2112 (jpg)

513 x 385 (png)	513 x 385 (png)
400 x 400 (jpg)	400 x 400 (jpg)
400 x 400 (png)	400 x 400 (png)
573 x 430 (png)	573 x 430 (png)
800 x 600 (png)	800 x 600 (png)
1659 x 1246 (png)	1659 x 1246 (png)
3036 x 1909 (png)	3036 x 1909 (png)
3036 x 2007 (jpg)	3036 x 2007 (jpg)

153 x 115 (png)	153 x 115 (png)
153 x 115 (png)	153 x 115 (png)
153 x 115 (png)	153 x 115 (png)
153 x 115 (png)	153 x 115 (png)
180 x 135 (png)	180 x 135 (png)
180 x 135 (png)	180 x 135 (png)
180 x 135 (png)	180 x 135 (png)
180 x 135 (png)	180 x 135 (png)
240 x 180 (jpg)	240 x 180 (jpg)
240 x 180 (jpg)	240 x 180 (jpg)
240 x 180 (jpg)	240 x 180 (jpg)
240 x 180 (jpg)	240 x 180 (jpg)
240 x 180 (png)	240 x 180 (png)
240 x 180 (png)	240 x 180 (png)
240 x 180 (png)	240 x 180 (png)
240 x 180 (png)	240 x 180 (png)
247 x 185 (png)	247 x 185 (png)
247 x 185 (png)	247 x 185 (png)
247 x 185 (png)	247 x 185 (png)
247 x 185 (png)	247 x 185 (png)
170 x 190 (jpg)	170 x 190 (jpg)
170 x 190 (jpg)	170 x 190 (jpg)
170 x 190 (jpg)	170 x 190 (jpg)
170 x 190 (jpg)	170 x 190 (jpg)
257 x 193 (png)	257 x 193 (png)
257 x 193 (png)	257 x 193 (png)
257 x 193 (png)	257 x 193 (png)
257 x 193 (png)	257 x 193 (png)
320 x 240 (jpg)	320 x 240 (jpg)
320 x 240 (jpg)	320 x 240 (jpg)

320 x 240 (jpg)	320 x 240 (jpg)
320 x 240 (jpg)	320 x 240 (jpg)
320 x 240 (png)	320 x 240 (png)
320 x 240 (png)	320 x 240 (png)
320 x 240 (png)	320 x 240 (png)
320 x 240 (png)	320 x 240 (png)
474 x 356 (png)	474 x 356 (png)
474 x 356 (png)	474 x 356 (png)
474 x 356 (png)	474 x 356 (png)
474 x 356 (png)	474 x 356 (png)
513 x 385 (png)	513 x 385 (png)
513 x 385 (png)	513 x 385 (png)
513 x 385 (png)	513 x 385 (png)
513 x 385 (png)	513 x 385 (png)
400 x 400 (jpg)	400 x 400 (jpg)
400 x 400 (jpg)	400 x 400 (jpg)
400 x 400 (jpg)	400 x 400 (jpg)
400 x 400 (jpg)	400 x 400 (jpg)
400 x 400 (png)	400 x 400 (png)
400 x 400 (png)	400 x 400 (png)
400 x 400 (png)	400 x 400 (png)
400 x 400 (png)	400 x 400 (png)
573 x 430 (png)	573 x 430 (png)
573 x 430 (png)	573 x 430 (png)
573 x 430 (png)	573 x 430 (png)
573 x 430 (png)	573 x 430 (png)
800 x 600 (png)	800 x 600 (png)
800 x 600 (png)	800 x 600 (png)
800 x 600 (png)	800 x 600 (png)
800 x 600 (png)	800 x 600 (png)

3031 x 1234 (png)	3031 x 1234 (png)
1659 x 1246 (png)	1659 x 1246 (png)
1659 x 1246 (png)	1659 x 1246 (png)
1659 x 1246 (png)	1659 x 1246 (png)
1659 x 1246 (png)	1659 x 1246 (png)
3089 x 1356 (jpg)	3089 x 1356 (jpg)
2953 x 1577 (png)	2953 x 1577 (png)
3119 x 1703 (jpg)	3119 x 1703 (jpg)
3037 x 1910 (png)	3037 x 1910 (png)
3036 x 2011 (jpg)	3036 x 2011 (jpg)
2763 x 2040 (png)	2763 x 2040 (png)
2895 x 2143 (jpg)	2895 x 2143 (jpg)

Images - Product in use (42)



HP ProBook x360 G1 EE



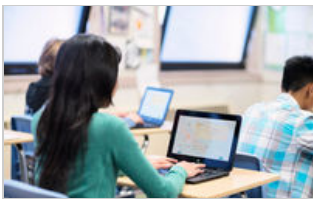
HP ProBook x360 G1 EE



HP ProBook x360 G1 EE



HP ProBook x360 G1 EE



HP ProBook x360 G1 EE



HP ProBook x360 G1 EE



HP ProBook x360 G1 EE



HP ProBook x360 G1 EE



HP ProBook x360 G1 EE



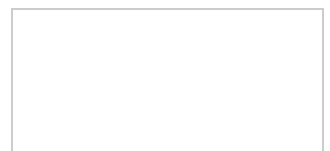
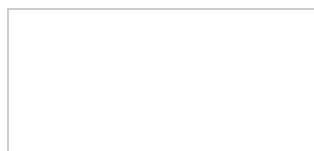
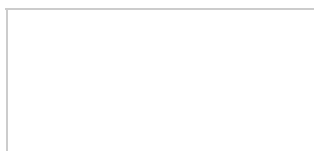
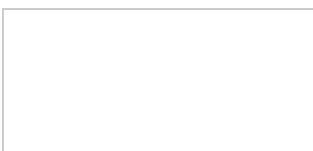
HP ProBook x360 G1 EE

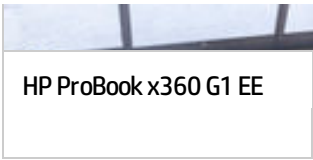


HP ProBook x360 G1 EE



HP ProBook x360 G1 EE





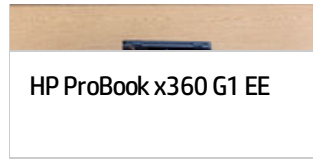
HP ProBook x360 G1 EE



HP ProBook x360 G1 EE



HP ProBook x360 G1 EE



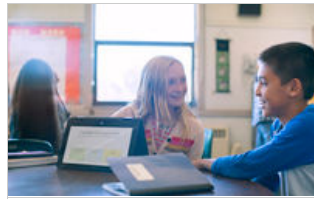
HP ProBook x360 G1 EE



HP ProBook x360 G1 EE



HP ProBook x360 G1 EE



HP ProBook x360 G1 EE



HP ProBook x360 G1 EE



HP ProBook x360 G1 EE



HP ProBook x360 G1 EE



HP ProBook x360 G1 EE



HP ProBook x360 G1 EE



HP ProBook x360 G1 EE



HP ProBook x360 G1 EE,
Active Pen



HP ProBook x360 G1 EE,
Active Pen



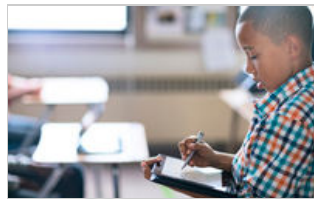
HP ProBook x360 G1 EE,
Active Pen



HP ProBook x360 G1 EE,
Active Pen



HP ProBook x360 G1 EE,
Active Pen



HP ProBook x360 G1 EE,
Active Pen



HP ProBook x360 G1 EE,
Active Pen



HP ProBook x360 G1 EE,
HP Elite x2 1012



HP ProBook x360 G1 EE,
HP Elite x2 1012



HP ProBook x360 G1 EE,
HP Elite x2 1012



HP ProBook x360 G1 EE,
HP Elite x2 1012



HP ProBook x360 G1 EE,
HP Elite x2 1012



HP ProBook x360 G1 EE,
HP Elite x2 1012



HP ProBook x360 G1 EE,
HP Elite x2 1012



HP ProBook x360 G1 EE,
HP Elite x2 1012

HP Elite x2 1012

HP Elite x2 1012, HP
OfficeJet Pro 8730 All-

HP Elite x2 1012, HP
OfficeJet Pro 8730 All-

HP OfficeJet Pro 8730
All-in-One Printer



HP ProBook x360 G1 EE,
HP OfficeJet Pro 8730
All-in-One Printer



HP ProBook x360 G1 EE,
HP OfficeJet Pro 8730
All-in-One Printer, HP

Videos (2)

HP Classroom Manager

2x2 Wireless Video - Education Editions

Search additional assets (Asset Hub)

[Search for additional assets](#)

This link is being provided as a convenience and for informational purposes only. HP Sales Central bears no responsibility for the accuracy, legality or content of the external site or for that of subsequent links. Contact the external site for answers to questions regarding its content.

Batteries/Chargers/Adapters

AC Adapters

Active	HP 45W Smart AC Adapter	H6Y88AA
Active	HP 65W Smart AC Adapter	H6Y89AA

Cables/Cable Kits/Cable Adapters

Cable Adapters

Active	HP USB-C to DP Adapter	N9K78AA
Active	HP USB-C to HDMI Adapter	N9K77AA
Active	HP USB-C to USB-A Hub	Z6A00AA
Active	HP USB-C to VGA Adapter	N9K76AA

Cases and Covers

Backpacks

Active	HP Essential Backpack	H1D24AA
--------	-----------------------	---------

Cases

Active	HP 15.6 Executive Black Top Load	P6N18AA
Active	HP 17.3 Executive Black Backpack	P6N23AA

Docking and Port Replicators

Docking Stations

Active	HP Elite 90W Thunderbolt 3 Dock	1DT93AA
Active	HP Elite USB-C Dock	Z9R42AA

Port Replicators

Active	HP 3001pr USB 3.0 Port Replicator	F3S42AA
Active	HP 3005pr USB 3.0 Port Replicator	H1L08AA

Keyboards/Mice/Monitors and Input Devices

Keyboard and Mouse Kits

Active	HP Slim USB Keyboard and Mouse	T6T83AA
--------	--------------------------------	---------

Business Monitors

EliteDisplays

Active	HP EliteDisplay E190i 18.9-in 5:4 LED Backlit IPS Monitor	E4U30AA
Active	HP EliteDisplay E202 20-inch Monitor	M1F41AA
Active	HP EliteDisplay E220t 21.5-inch Touch Monitor	L4Q76AA
Active	HP EliteDisplay E222 21.5-inch Monitor	M1N96AA
Active	HP EliteDisplay E230t 23-inch Touch Monitor	W2Z50AA
Active	HP EliteDisplay E232 23-inch Monitor	M1N98AA
Active	HP EliteDisplay E240 23.8-inch Monitor	M1N99AA
Active	HP EliteDisplay E240c 23.8-inch Video Conferencing Monitor	M1P00AA
Active	HP EliteDisplay E242 24-inch Monitor	M1P02AA
Active	HP EliteDisplay E271i 27-inch IPS LED Backlit Monitor	D7Z72AA
Active	HP EliteDisplay E272q 27-inch QHD Monitor	M1P04AA
Active	HP EliteDisplay S140u 14-inch USB Portable Monitor	G8R65AA
Active	HP EliteDisplay S231d 23-in IPS LED Notebook Docking Monitor	F3J72AA
Active	HP EliteDisplay S240uj 23.8-inch USB-C Wireless Charging Monitor	T7B66AA
Active	HP EliteDisplay S270c 27-in Curved Display	K1M38AA
Active	HP EliteDisplay S340c 34-inch Curved Monitor	V4G46AA

Large Format Display

Active	HP LD5511 55-inch Large Format Display	T5X84AA
--------	--	---------

ProDisplays

Active	HP ProDisplay P17A 17-inch 5:4 LED Backlit Monitor	F4M97AA
Active	HP ProDisplay P19A 19-inch LED Backlit Monitor	D2W67AA
Active	HP ProDisplay P202 20-inch Monitor	K7X27AA
Active	HP ProDisplay P202m 20-inch Monitor	K7X28AA
Active	HP ProDisplay P203 20-inch Monitor	X7R53AA
Active	HP ProDisplay P223 21.5-inch Monitor	X7R61AA
Active	HP ProDisplay P223a 21.5-inch Monitor	X7R62AA
Active	HP ProDisplay P232 23-inch Monitor	K7X31AA
Active	HP ProDisplay P240va 23.8-inch Monitor	N3H14AA

Value Displays

Active	HP N270c 27-inch Curved Display	Y6J31AA
Active	HP V194 18.5-inch Monitor	V5E94AA
Active	HP V272 27-inch Monitor	M4B78AA

HP Care Services

Personal Systems Commercial Care Services

Active	HP 1 year Next Business Day Onsite Hardware Support for Notebooks	UK701E
Active	HP 1 year Next Business Day Onsite Hardware Support w/Defective Media Retention for Notebooks	UL656E
Active	HP 1 year Post Warranty Next Business Day Onsite Hardware Support for Notebooks	UK705PE
Active	HP 1 year Priority Account Service for single PC (exclude ASM)	UM224E
Active	HP 2 year Next Business Day Onsite Hardware Support for Notebooks	UQ877E
Active	HP 3 year 4 hour Onsite Response 9x5 Hardware Support for Notebooks	U0A17E
Active	HP 3 year Next Business Day Onsite Hardware Support for Notebooks	UK703E
Active	HP 3 year Next Business Day Onsite Hardware Support w/Travel Coverage for Notebooks	UL653E
Active	HP 3 Year Next Business Day Onsite HW Support W/Accidental Damage Protection (Excess 55ex) for NB	U0VU9E
Active	HP 3 year Next Business Day Onsite HW Support w/Accidental Damage Protection-G2 for Notebooks	UK726E
Active	HP 3 year Next Business Day Onsite HW Support w/Defective Media Retention for Notebooks	UL657E
Active	HP 3 year Next business day Onsite with Long Life Battery Replacement Notebook Only Service	HX550E
Active	HP 3 year Pickup and Return Hardware Support for Notebooks	UK707E
Active	HP 3 year Return for Repair Hardware Support for Notebooks	UK722E
Active	HP 3 year Travel Next business day Onsite with Accidental Damage Protection Gen 2 Notebook Only SVC	UQ825E
Active	HP 4 year Next Business Day Onsite Hardware Support for Notebooks	UK716E
Active	HP 4 year Next Business Day Onsite Hardware Support w/Defective Media Retention for Notebooks	UL658E
Active	HP 4 year Next Business Day Onsite Hardware Support w/Travel Coverage for Notebooks	UL654E
Active	HP 4 Year Next Business Day Onsite HW Support W/Accidental Damage Protection (Excess 55ex) for NB	U0VV0E
Active	HP 4 year Next Business Day Onsite HW Support w/Accidental Damage Protection-G2 for Notebooks	UK748E
Active	HP 4 year Pickup and Return Hardware Support for Notebooks	UK720E
Active	HP 4 year Travel Next business day Onsite with Accidental Damage Protection Gen 2 Notebook Only SVC	UQ827E
Active	HP 5 year Next Business Day Onsite Hardware Support for Notebooks	UK718E
Active	HP 5 year Next Business Day Onsite Hardware Support w/Defective Media Retention for Notebooks	UL659E
Active	HP 5 year Next Business Day Onsite HW Support w/Accidental Damage Protection-G2 for Notebooks	UM237E
Active	HP 5 year Pickup and Return Hardware Support for Notebooks	UK721E

Detailed Specifications

Accessories

HP 3005pr USB3 Port Replicator Y4H06AA; HP Slim USB Keyboard and Mouse T6T83AA; HP 45W Smart AC Adapter H6Y88AA; HP Keyed Cable Lock 10 mm T1A62AA; HP Stereo USB Headset T1A67AA

Audio features

HD audio; Dual speakers; Dual digital microphones; Headphone/microphone combo jack

Battery type

HP Long Life 3-cell, 41 Wh Li-ion

Camera

World-facing 1080p secondary camera (select models); User-facing 720p camera

Chipset

Chipset is integrated with processor

Code name

Autobot

Copyright notice

Copyright © 2017 HP Development Company, L.P. The only warranties for HP products are set forth in the express limited warranty statements accompanying such products. Nothing herein should be construed as constituting an additional warranty. HP shall not be liable for technical or editorial errors or omissions contained herein.

Datasheet publication number

4AA6-7832EEAP

Display

11.6" diagonal HD SVA eDP LED slim touch screen (1366 x 768)

Display

11.6" diagonal HD SVA touch display

Display footnote number

[6,11]

Display size (diagonal)

11.6"

Energy efficiency

ENERGY STAR® certified

Environmental

Low halogen

Environmental specification footnote number

[21]

Expansion slots

1 microSD

Expansion slots footnote number

[7]

Expansion slots note

Supports micro SD, SDHC, SDXC

External I/O ports footnote number

[10]

Graphics

Integrated

Graphics

Intel® HD Graphics 500

Hard drive description

64 GB eMMC

Image legal disclaimer

Product image may differ from actual product

Keyboard

Full-sized, spill and pick-resistant

Legal disclaimer [01]

[4] Not all features are available in all editions or versions of Windows. Systems may require upgraded and/or separately purchased hardware, drivers, software or BIOS update to take full advantage of Windows functionality. Windows 10 is automatically updated, which is always enabled. ISP fees may apply and additional requirements may apply over time for updates. See <http://www.windows.com>.

Legal disclaimer [02]

[5] Sold separately. Service levels and response times for HP Care Packs may vary depending on your geographic location. Service starts on date of hardware purchase. Restrictions and limitations apply. For details, visit www.hp.com/go/cpc. HP services are governed by the applicable HP terms and conditions of service provided or indicated to Customer at the time of purchase. Customer may have additional statutory rights according to applicable local laws, and such rights are not in any way affected by the HP terms and conditions of service or the HP Limited Warranty provided with your HP Product.

Legal disclaimer [03]

[6] Windows 10/MM14 battery life will vary depending on various factors including product model, configuration, loaded applications, features, use, wireless functionality, and power management settings. The maximum capacity of the battery will naturally decrease with time and usage. See www.bapco.com for additional details.

Legal tagline

HP recommends Windows 10 Pro.

Manageability features footnote number

[14,15]

Management features

HP SoftPaq Download Manager (SDM); HP System Software Manager (SSM); LANDESK Management

MDA key selling point

Windows 10 Pro 64

Memory and storage

4 GB memory; 64 GB eMMC storage

Memory, standard

4 GB DDR3L-1600 SDRAM (onboard)

Minimum dimensions (W x D x H)

20.79 x 30.24 x 1.99 cm

Network interface

Realtek RTL8111HSH Gigabit Ethernet

Operating system

Windows 10 Pro 64

Pointing device

Clickpad with multitouch gestures

Ports

2 USB 3.1 Gen 1; 1 USB Type-C™ (Data transfer only); 1 HDMI 1.4b; 1 AC power connector; 1 RJ-45; 1 headphone/microphone combo jack

Power

45 W Smart AC adapter

Processor

Intel® Celeron® N3350 with Intel HD Graphics 500 (1.1 GHz, up to 2.4 GHz with Intel Turbo Boost Technology, 2 MB cache, 2 cores)

Processor family

Intel® Celeron® processor

Product long name specifications

HP ProBook x360 11 G1 EE Notebook PC with Windows 10 Pro 64; Intel® Celeron® N3350 with Intel HD Graphics 550 (1.1 GHz, up to 2.4 GHz with Intel Turbo Boost

Technology, 2 MB cache, 2 cores); 4 GB DDR3L-1600 SDRAM (onboard); 64 GB eMMC

Sales office and telephone number

Albania: +49 89 9396 1803; Algeria: +213 (0) 61 68 23 00; Austria: +43 (0) 810 00 60 80; Bahrain: 800 171; Belgium: +32 (02) 729 71 11; Bulgaria: +359 2 969 87; Bosnia-Herzegovina: +49 89 9396 1803; Commonwealth of Independent States (CIS): +(095) 923 50 01; Croatia: +385 1 606 02 00; Czech Republic: +420 261 108 108; Denmark: +45 48 12 10 00; HP East Africa, Authorized Consultant: +254 20 27 16 111; Egypt: HP +202 792 5070 ; Estonia: +372 6 813 820; Finland: HP Myyntipalvelu 010 217 2700; France: +33 (0) 826 800 400; Germany: +49 (0) 180 532 62 22; Greece: +30 801 11 22 55 47; Hungary: +36 (1) 382 11 11; Iceland: +354 (1) 67 10 00; Ireland: +353 1 615 82 00; Israel: +972 9 830 48 48; Italy: Prodotti +39 02 92607 330, Servizio HP Care Pack: +39 02 9212 2040; Kazakhstan & Kyrgyzstan: +7 327 2 58 43 43; Latvia: +371 703 07 00; Lithuania: +370 5 2103 300; Luxembourg: (+352) 263 160 34 Macedonia: +49 89 9396 1803; Malta: +49 89 9396 1803; Middle East (Within UAE Toll Free): 800 45 20; Moldova: +49 89 9396 1803; Morocco (African Region): Call Centre +212 22 40 47 47, HP Sale Office +212 22 97 37 37/+212 22 43 64 00; Netherlands: 0800 266 7272; Nigeria: + 234 13 205 241/3; Norway: +47 24 09 70 00; Poland: 0 801 522 622 and/or 00 48 22 565 77 00 (calls are charged at national rates); Portugal: +351 808 200 808 (end user welcome desk for commercial products) ; Romania: +40 (21) 303 83 00; Saudi Arabia: (Toll free) 800 897 14 33, Office Number: +96612731200; Serbia and Montenegro: +381 11 201 99 00; Slovakia: 0800 147 147; Slovenia: +386 1 230 74 20; Spain: +34 (91) 631 16 00; Sweden: +46 200 27 00 00; Switzerland: Pre-sales/product information +41 (0) 848 88 44 66, Spare parts, manuals +41 (0) 848 84 74 64; Tunisia: +216 1 89 12 22; Turkey: +90 (212) 444 79 79; UAE (Toll Free): 800 45 20; UAE (Toll Free): 800 45 20 or 800 49 10; Ukraine: +380 44 490 61 20 ; United Kingdom: HP Teleweb Glasgow +44 (0) 845 270 40 00

Security management

TPM 2.0; Security lock slot

Security management footnote number

[16,17]

Services (Care Pack)

Receive 5 years of next business day onsite repair from an HP-qualified technician for your computing device, if the issue cannot be solved remotely. For more information on Care Pack services, please visit www.hp.com/go/cpc.

Software

HP Hotkey Support; HP Support Assistant; Skype; Buy Office; Bing Search; HP JumpStart; HP Noise Cancellation; HP ePrint Driver+JetAdvantage; HP School Pack (includes HP Classroom Manager, HP Adaptive Learning created by Fishtree, Corinth Classroom, HP Simple Sign-on created by Classlink and more)

Software footnote number

[12,13,18]

Standard memory note

Transfer rates up to 1600 MT/s

Tech spec footnote

[1] Not all features are available in all editions or versions of Windows of Windows. Systems may require upgraded and/or separately purchased hardware, drivers, software or BIOS update to take full advantage of Windows functionality. Windows 10 is automatically updated, which is always enabled. ISP fees may apply and additional requirements may apply over time for updates. See <http://www.windows.com/>.

Tech spec footnote

[10] HDMI cable sold separately.

Tech spec footnote

[11] Resolutions are dependent upon monitor capability, and resolution and color depth settings.

Tech spec footnote

[12] HP ePrint Driver requires an Internet connection to HP web-enabled printer and HP ePrint account registration (for a list of eligible printers, supported documents and image types and other HP ePrint details, see www.hp.com/go/eprintcenter).

Tech spec footnote

[13] Skype is not offered in China.

Tech spec footnote

[14] Not preinstalled, coming soon at <http://www.hp.com/go/clientmanagement>

Tech spec footnote

[15] LANDESK Management subscription required.

Tech spec footnote

[16] Lock sold separately

Tech spec footnote

[17] Absolute agent is shipped turned off, and will be activated when customers activate a purchased subscription. Subscriptions can be purchased for terms ranging multiple years. Service is limited, check with Absolute for availability outside the U.S. The Absolute Recovery Guarantee is a limited warranty. Certain conditions apply. For full details visit: <http://www.absolute.com/company/legal/agreements/computrace-agreement>. Data Delete is an optional service provided by Absolute Software. If utilized, the Recovery Guarantee is null and void. In order to use the Data Delete service, customers must first sign a Pre-Authorization Agreement and either obtain a PIN or purchase one or more RSA SecurID tokens from Absolute Software.

Tech spec footnote

[18] HP Classroom Manager for Teachers is required and sold separately for control and device locking from the teacher's Windows desktop console; no locking and control functionality originates from HP Classroom Manager for Student. Control and device locking originate from the teacher's Windows desktop console.

Tech spec footnote

[19] HP Care Packs are sold separately. Service levels and response times for HP Care Packs may vary depending on your geographic location. Service starts on date of hardware purchase. Restrictions and limitations apply. For details, visit www.hp.com/go/cpc. HP services are governed by the applicable HP terms and conditions of service provided or indicated to Customer at the time of purchase. Customer may have additional statutory rights according to applicable local laws, and such rights are not in any way affected by the HP terms and conditions of service or the HP Limited Warranty provided with your HP Product.

Tech spec footnote

[2] Multicore is designed to improve performance of certain software products. Not all customers or software applications will necessarily benefit from use of this technology. Performance and clock frequency will vary depending on application workload and your hardware and software configurations. Intel's numbering is not a measurement of higher performance.

Tech spec footnote

[20] Windows 10 MM14 battery life will vary depending on various factors including product model, configuration, loaded applications, features, use, wireless functionality, and power management settings. The maximum capacity of the battery will naturally decrease with time and usage. See www.bapco.com for additional details.

Tech spec footnote

[21] External power supplies, power cords, cables and peripherals are not Low Halogen. Service parts obtained after purchase may not be Low Halogen.

Tech spec footnote

[22] Some devices for academic use will automatically be updated to Windows 10 Pro Education with the Windows 10 Anniversary Update. Features vary; see <https://aka.ms/ProEducation> for Windows 10 Pro Education feature information.

Tech spec footnote

[23] NOTE: In accordance with Microsoft's support policy, HP does not support the Windows 8 or Windows 7 operating system on products configured with Intel and AMD 7th generation and forward processors or provide any Windows 8 or Windows 7 drivers on <http://www.support.hp.com>.

Tech spec footnote

[3] For storage drives, GB = 1 billion bytes. TB = 1 trillion bytes. Actual formatted capacity is less. Up to 30 GB (for Windows 10) is reserved for system recovery software.

Tech spec footnote

[4] Not available with eMMC storage.

Tech spec footnote

[5] No HPRM.

Tech spec footnote

[6] HD content required to view HD images.

Tech spec footnote

[7] All cables are sold separately.

Tech spec footnote

[8] Wireless access point and Internet service required and sold separately. Availability of public wireless access points limited. The specifications for the 802.11ac WLAN are draft specifications and are not final. If the final specifications differ from the draft specifications, it may affect the ability of the notebook to communicate with other 802.11ac WLAN devices.

Tech spec footnote

[9] Internet access required.

Trademark information

Intel, Celeron and Pentium are trademarks of Intel Corporation or its subsidiaries in the U.S. and/or other countries. Bluetooth is a trademark of its proprietor and used by HP Inc. under license. USB Type-C™ and USB-C™ are trademarks of USB Implementers Forum. ENERGY STAR is a registered trademark of the U.S. Environmental Protection Agency. All other trademarks are the property of their respective owners.

Warranty

Limited 3-year and 1-year warranty options available, depending on country, 3-year limited warranty on HP Long Life Battery (only available with 3-year platform warranty). Optional HP Care Pack Services are available to extend your protection beyond the standard warranty. For more details visit: hp.com/go/cpc.

Warranty footnote number

[19]

Weight

Starting at 1.45 kg

Weight note (metric)

Weight varies by configuration and components

Wireless

Intel® Dual Band Wireless-AC 7265 802.11 a/b/g/n/ac (2x2) WiFi and Bluetooth® 4.2 Combo (non-vPro)

The product could differ from the images shown. © Copyright 2015 HP Inc. The Information contained herein is subject to change without notice. Warranties for HP products and services are set out in the express warranty statements accompanying such products and services. In addition, our products and services come with guarantees that cannot be excluded under the Australian Consumer Law. Subject to the foregoing, nothing herein should be construed as constituting an additional warranty. HP shall not be liable for technical or editorial errors or omissions contained herein.