

## Summerfields

**Contact Details:**

Daytime Phone: 01244 356890

Uttoxeter  
Bedfordshire  
ST14 8DN  
England

**£ 277.00 - £ 1,348.00 per week**

This detached cottage rests in Uttoxeter, Staffordshire and can sleep four people in two bedrooms.

**Facilities:**

- **Communications:**  
Broadband Internet
- **Entertainment:**  
TV
- **Kitchen:**  
Cooker, Fridge
- **Price Included:**  
Linen, Towels

**Room Details:****Sleeps: 4****2 Double Rooms****1 Bathroom****About Uttoxeter and Bedfordshire**

Resting in the county of Staffordshire is the town of Uttoxeter, home to Uttoxeter Racecourse, and near to the popular Alton Towers Theme Park. Within the town you can find plenty of shops and pubs to enjoy when you're not at the races, on thrilling rollercoasters or exploring the countryside. The Peak District National Park is within reach of

## Recommended Attractions

### 1. Goodwood

*Art Gallery, Historic Buildings and Monuments, Nature Reserve, Parks Gardens and Woodlands, Tours and Trips, Visitor Centres and Museums, Childrens Attractions, Zoos Farms and Wildlife Parks, Bistros and Brasseries, Cafes Coffee Shops and Tearooms, Horse Riding and Pony Trekking, Shooting and Fishing, Walking and Climbing*



Motor circuit, Stately Home, Racecourse, Aerodrome, Forestry, Organic Farm Shop, Festival of Speed, Goodwood Revival

Chichester, PO18 0PX, West Sussex, England

### 2. Goodwood Races

*Festivals and Events, Horse Racing*



Under the family of the Duke of Richmond, Goodwood Races sits only five miles north of the town of Chichester.

Chichester, PO18 0PS, West Sussex, England

### 3. Arundel Castle and Gardens

*Historic Buildings and Monuments, Parks Gardens and Woodlands*



This converted Castle and Stately Home is over 1000 years old, and sits on the bank of the River Arun in West Sussex

Arundel, BN18 9AB, West Sussex, England

### 4. Chichester Cathedral

*Historic Buildings and Monuments, Tours and Trips*



This 900 Year Old Cathedral has been visited millions of times by people of all faiths and denominations.

Chichester, PO19 1PX, West Sussex, England

### 5. Petworth House

*Historic Buildings and Monuments, Parks Gardens and Woodlands*



Petworth House is a grade 1 listed building from the 17th Century. Set in an idyllic 700-acre Deer Park, it makes a great day out for viewing the historic building and walking in the verdant park surrounding it.

Petworth, GU28 0AE, West Sussex, England

## 6. Bucklers Hard

Visitor Centres and Museums, Childrens Attractions



Bucklers Hard is a 18th century maritime village which is situated on the Beaulieu River, it has a stunning Marina and plenty to see in the village.

Brockenhurst, SO42 7XB, Hampshire, England

## 7. Beaulieu Estate

Historic Buildings and Monuments, Visitor Centres and Museums, Childrens Attractions



Beaulieu is situated in the New Forest National Park, it is the perfect place for a fun day including museums, the historic abbey and the list goes on

Brockenhurst, SO42 7ZN, Hampshire, England

## 8. Paultons Park

Theme Parks



Paultons Family Theme Park is a great day out, there are a wide selection of rides allowing you to have the most fun and exciting day out.

The New Forest, SO51 6AL, Hampshire, England

## 9. Dunster Castle

Historic Buildings and Monuments, Parks Gardens and Woodlands



National Trust Property with subtropical terraced garden

Dunster, TA24 6SL, Somerset, England

 **Highly Recommended by Summerfields!**

## 10. Lynton and Barnstaple Railway

Tours and Trips, Cafes Coffee Shops and Tearooms, Railways



A restored narrow gauge steam railway in the Exmoor National Park area of North Devon. One mile of the original 19 miles has so far been re-opened.

Martinhoe Cross, Parracombe, EX31 4RA, Devon, England

**Phone:** 01598 763487

 **Highly Recommended by Summerfields!**

## 11. Exmoor National Park

Parks Gardens and Woodlands, Horse Riding and Pony Trekking, Shooting and Fishing, Walking and Climbing



Beautiful national park spanning Somerset and Devon

Dulverton, TA22 9HL, Somerset, England

Highly Recommended by Summerfields!

### 12. Quince Honey Farm

Visitor Centres and Museums, Childrens Attractions, Zoos Farms and Wildlife Parks, Shops



World famous honey farm - the largest in the country

South Molton, EX36 3AZ, Devon, England

Highly Recommended by Summerfields!

### 13. h2outdoor Adventure Activities North Devon

Tours and Trips, Cycling and Mountain Bikes, Horse Riding and Pony Trekking, Sailing and Watersports, Walking and Climbing, Guided Walks, Guided Tours and Day Trips



A fantastic selection of adventure activities in North Devon. Sea kayaking, canoeing, surfing, coasteering, mountain biking, pony trekking & high ropes are just some of the activities we offer. Suitable for children, groups, stag/hen & corporate

Woolacombe, EX34 7BZ, Devon, England

Highly Recommended by Summerfields!

### 14. Horse riding holidays in North Devon Croyde

Childrens Attractions, Horse Riding and Pony Trekking



Roylands riding stables cater for all abilities and offer horse riding holidays.

Croyde, EX33, Devon, England

Highly Recommended by Summerfields!

### 15. Saunton Sands Beach

Beaches, Childrens Attractions, Sailing and Watersports



3 miles long sandy beach, ideal for families and popular with surfers

Saunton, EX33, Devon, England

Highly Recommended by Summerfields!

## 16. Westward Ho! Beach

*Beaches, Childrens Attractions*

Over 2 miles of sandy beach in North Devon

Westward Ho, TQ1 , Devon, England



 **Highly Recommended by Summerfields!**

## 17. Lundy Island

*Beaches, Tours and Trips, Childrens Attractions, Pubs and Bars, Walking and Climbing*

Lundy Island and Nature Reserve

Bideford, EX39 2LY, Devon, England



 **Highly Recommended by Summerfields!**

## 18. The Milky Way Adventure Park

*Visitor Centres and Museums, Childrens Attractions, Indoor and Outdoor Play Areas*

North Devon's largest undercover family attraction.

Bideford, EX39 5RY, Devon, England



 **Highly Recommended by Summerfields!**

## 19. Babbacombe Model Village

*Childrens Attractions*

Thousands of miniature buildings, people and vehicles capture the essence of England's past, present and future

Babbacombe, TQ1 3LA, Devon, England



 **Highly Recommended by Summerfields!**

## 20. Blackpool Sands Beach Devon

*Beaches, Childrens Attractions, Cafes Coffee Shops and Tearooms, Shops, Sailing and Watersports*



Award-winning family beach with turquoise blue sea giving it an almost Mediterranean feel.

Dartmouth, TQ6 0RG, Devon, England

Highly Recommended by Summerfields!

## 21. Slapton Sands and Torcross

*Beaches, Childrens Attractions, Sailing and Watersports*



Fantastic pebble beach in Devon

Slapton, TQ6, Devon, England

Highly Recommended by Summerfields!

## 22. Tintagel and Tintagel Castle

*Beaches, Historic Buildings and Monuments, Lochs Lakes and Waterfalls, Parks Gardens and Woodlands, Visitor Centres and Museums, Childrens Attractions, Cafes Coffee Shops and Tearooms, Pubs and Bars, Shops*



Breathtaking ruined castle on the Cornish Coast - mythical home of King Arthur

Tintagel, PL34, Cornwall, England

Highly Recommended by Summerfields!

## 23. Lanhydrock

*Historic Buildings and Monuments, Parks Gardens and Woodlands, Visitor Centres and Museums, Childrens Attractions, Indoor and Outdoor Play Areas, Cafes Coffee Shops and Tearooms, Restaurants*



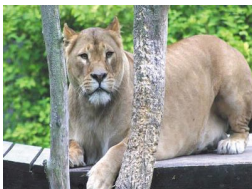
Magnificent late Victorian country house with extensive servants' quarters, gardens and wooded estate

Bodmin, PL30 5AD, Cornwall, England

Highly Recommended by Summerfields!

## 24. Newquay Zoo

*Zoos Farms and Wildlife Parks*



One of the nations's best zoos, home of many of the world's endangered species.

Newquay, TR7 2LZ, Cornwall, England

Highly Recommended by Summerfields!



## 25. Fistral Beach

Beaches, Sailing and Watersports



World Famous surfing Beach in Newquay, Cornwall

Newquay, Cornwall, Cornwall, England

 **Highly Recommended by Summerfields!**

## 26. Lost Gardens of Heligan

Parks Gardens and Woodlands



One of the most popular botanical gardens in the UK

St Austell, PL26 6EN, Cornwall, England

"A great day out for everyone. Highly recommended by us as a family. Plenty of space for kids to run around. Beautiful gardens and walks."

 **Highly Recommended by Summerfields!**

## 27. The Cross Keys Restaurant in Kippen

Pubs and Bars, Restaurants



Traditional and comfortable inn situated in the village of Kippen, Stirlingshire. We serve food all day from soups to sirloins, with home made pies and puddings to finish. Every Sunday is roast day featuring two types of roast. Children Welcome.

Kippen, FK8 3DN, Stirlingshire, Scotland

**Phone:** 01786 870293

 **Highly Recommended by Summerfields!**

## 28. The Black Watch Museum

Visitor Centres and Museums



Regimental Museum of the Proud and Illustrious Black Watch Regiment in Perth Scotland

Perth, PH1 5HR, Perth and Kinross, Scotland

 **Highly Recommended by Summerfields!**

## 29. Gloagburn Farm Shop and Coffee Shop near Perth

Cafes Coffee Shops and Tearooms, Shops



The Gloagburn Farm Shop and Café are a local business of high quality offering local produce as well as a café.

Tibbermore, PH1 1QL, Perth and Kinross, Scotland

**Highly Recommended by Summerfields!**

### 30. Scone Palace

*Historic Buildings and Monuments, Parks Gardens and Woodlands*



Scone Palace occupies a unique position in Scottish History

Perth, PH2 6BD, Perth and Kinross, Scotland

**Highly Recommended by Summerfields!**

### 31. Scone Palace

*Historic Buildings and Monuments, Parks Gardens and Woodlands*



Former crowning place of the Kings of Scotland, stunning setting in beautiful grounds. A stately home to visit.

Perth, PH2 6BD, Perth and Kinross, Scotland

**Highly Recommended by Summerfields!**

### 32. Glamis Castle

*Historic Buildings and Monuments*



Childhood home of Her Majesty Queen Elisabeth The Queen Mother

Glamis, DD8 1RJ, Angus and Dundee, Scotland

**Highly Recommended by Summerfields!**

### 33. The Scottish Crannog Centre

*Historic Buildings and Monuments, Visitor Centres and Museums*



Archaeological Open-Air Museum

Kenmore Aberfeldy, PH15 2HY, Perth and Kinross, Scotland

**Highly Recommended by Summerfields!**

### 34. Enchanted Forest in Perthshire

*Festivals and Events, Lochs Lakes and Waterfalls, Parks Gardens and Woodlands, Live Music and Comedy*





The Enchanted Forest offers visitors a unique opportunity to experience the outdoors, at night and with spectacular imagery. You will experience a lighting show that is out of this world.

Pitlochry, PH16 5LA, Perth and Kinross, Scotland

 **Highly Recommended by Summerfields!**

### 35. Blair Castle

*Historic Buildings and Monuments, Parks Gardens and Woodlands, Cafes Coffee Shops and Tearooms*



Historic Castle

Blair Atholl, PH18 5TL, Perth and Kinross, Scotland

 **Highly Recommended by Summerfields!**

### 36. Balmoral Castle

*Historic Buildings and Monuments, Parks Gardens and Woodlands, Visitor Centres and Museums*



5 Star visitor attraction set amongst the magnificent scenery of Royal Deeside

Balmoral, AB35 5TB, Aberdeenshire, Scotland

 **Highly Recommended by Summerfields!**

### 37. Dunrobin Castle Golspie Sutherland

*Historic Buildings and Monuments, Visitor Centres and Museums*



Seat of the Duke of Sutherland. Originally built in 1401 and rebuilt in 1835. Castle Tour and Falconry Displays a Must. Open between April and Oct

Golspie, KW10 6RS, The Highlands, Scotland

*"Castle of fairy tales which looks dramatic from the sea. Falconry display and museum worth visiting too."*

 **Highly Recommended by Summerfields!**

### 38. Brora golf club

Golf



Brora Golf Club, a traditional links course, designed by James Braid, where little has changed since he left in 1923.

Brora, KW9 6QS, The Highlands, Scotland

*"Wonderful Braid course in top 100 best courses UK and Ireland."*

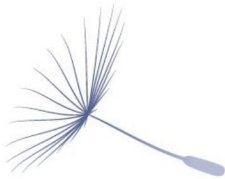
 **Highly Recommended by Summerfields!**

**39. Loch Venachar***Lochs Lakes and Waterfalls*

Loch Venachar, The Trossachs

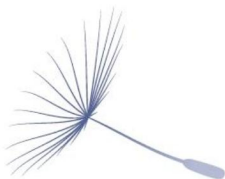
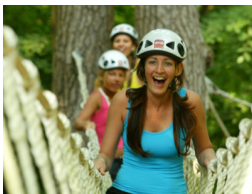
Callander, FK8 3EN, Stirlingshire,  
Scotland*"There is a great walk down the southside of the Loch leading past the sailing club and if you branch right you can reach the Byre Inn."*

By Summerfields

**40. Sudbury Hall The National Trust Museum of Childhood***Historic Buildings and Monuments, Childrens Attractions, Cafes Coffee Shops and Tearooms*Museum showing aspects of the life of children over the past 200  
yearsAshbourne, DE6 5HT, Derbyshire,  
England**41. ALTON TOWERS***Childrens Attractions, Theme Parks*

A theme park and resort located in Staffordshire, England

Alton , ST10 4DB, Staffordshire, England

**42. Shugborough Estate***Historic Buildings and Monuments, Parks Gardens and Woodlands, Cafes Coffee Shops and Tearooms*Rare survival of a complete estate, with all major buildings including  
mansion house, servants' quarters, model farm and walled gardenMilford, ST17 0XB, Staffordshire,  
England**43. Aerial Extreme at Trentham Estate in Staffordshire***Parks Gardens and Woodlands, Childrens Attractions, Cafes Coffee Shops and Tearooms, Walking and Climbing*High Wire Adventure Course within Trentham Country Estate  
grounds in Staffordshire in EnglandTrentham, ST4 8AX, Staffordshire,  
England

**44. Emma Bridgewater**

*Childrens Attractions, Shops*

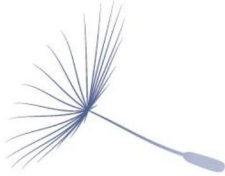


A working factory producing world-renowned handmade and hand-decorated pottery in the heart of Stoke-on-Trent..

Stoke-on-Trent, ST1 3EJ, Staffordshire, England

**45. Calke Abbey**

*Historic Buildings and Monuments, Parks Gardens and Woodlands, Childrens Attractions, Cafes Coffee Shops and Tearooms*



Vivid example of a great country house in decline, with extraordinary contents, historic park and restored garden

Derby, DE73 7LE, Derbyshire, England

**46. Drayton Manor Theme Park**

*Theme Parks*

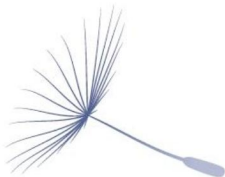


For total family entertainment this festive season, come and experience Drayton's Magical Christmas.

Near Tamworth, B78 3TW, Staffordshire, England

**47. Staunton Harold Church**

*Historic Buildings and Monuments, Parks Gardens and Woodlands*



Imposing church built in 1653, with fine panelled interior

Ashby-de-la-Zouch, LE65 1RW, Leicestershire, England

**48. Crich Tramway Village**

*Tours and Trips, Visitor Centres and Museums, Childrens Attractions, Indoor and Outdoor Play Areas, Cafes Coffee Shops and Tearooms, Pubs and Bars, Restaurants, Shops, Guided Tours and Day Trips, Railways*



An open air museum of trams. Museum, exhibition hall, workshops, woodland park, indoor and outdoor play & picnic area. Shop, bar, restaurant and tearoom

Matlock, DE4 5DP, Derbyshire, England



### More Information

For more information, you can find us under ref.nr. 84316 on LovetoEscape.com

[LovetoEscape.com/holiday-cottages/84316/summerfields.htm](https://LovetoEscape.com/holiday-cottages/84316/summerfields.htm)