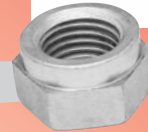
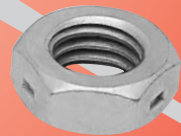


LOCKNUT TECHNOLOGY INC.

**QUALITY
ENGINEERED
PRODUCTS**



***A WIDE RANGE OF PRODUCTS
AND SERVICES TO THE GLOBAL MARKET
TO MEET ALL CUSTOMER REQUIREMENTS***



**MANUFACTURER AND PROCESSOR
OF ALL METAL PREVAILING
TORQUE LOCKNUTS**



LOCKNUT TECHNOLOGY INC.

351 S. LOMBARD ROAD • ADDISON, ILLINOIS 60101 • (630) 628-5330 • FAX (630) 628-5331





GRADE A, B, C
Various Style of Locking Features Available.
Interchangeable with All Major Brands

GRADE A — ZINC PLATED*

COARSE THREAD		WIDTH ACROSS FLATS		THICKNESS		WEIGHT PER M
SIZE	PART NO.	MAX.	MIN.	MAX.	MIN.	
1/4-20	AU1420AAZ	.438	.428	.226	.212	6.7
5/16-18	AU51618AAZ	.500	.489	.273	.258	10.0
3/8-16	AU3816AAZ	.562	.551	.337	.320	14.7
7/16-14	AU71614AAZ	.688	.675	.385	.365	25.0
1/2-13	AU1213AAZ	.750	.736	.448	.427	34.7

GRADE B — ZINC PLATED*

COARSE THREAD		FINE THREAD		WIDTH ACROSS FLATS		THICKNESS		WEIGHT PER M
SIZE	PART NO.	SIZE	PART NO.	MAX.	MIN.	MAX.	MIN.	
1/4-20	AU1420ABZ	1/4-28	AU1428ABZ	.438	.428	.257	.243	7.8
5/16-18	AU51618ABZ	5/16-24	AU51624ABZ	.500	.489	.302	.292	11.2
3/8-16	AU3816ABZ	3/8-24	AU3824ABZ	.562	.551	.377	.360	16.0
7/16-14	AU71614ABZ	7/16-20	AU71620ABZ	.688	.675	.430	.410	29.8
1/2-13	AU1213ABZ	1/2-20	AU1220ABZ	.750	.736	.510	.490	39.4
5/8-11	AU5811ABZ	5/8-18	AU5818ABZ	.938	.922	.645	.621	78.9
3/4-10	AU3410ABZ	3/4-16	AU3416ABZ	1.125	1.088	.750	.702	120.0
7/8-9	AU789ABZ	7/8-14	AU7814ABZ	1.312	1.269	.862	.810	230.0
1-8	AU18ABZ	1-14	AU114ABZ	1.500	1.450	.958	.902	278.0
1 1/8-7	AU1187ABZ	----	----	1.690	1.631	1.176	.939	403.0

GRADE C — CAD PLATED*

COARSE THREAD		FINE THREAD		WIDTH ACROSS FLATS		THICKNESS		WEIGHT PER M
SIZE	PART NO.	SIZE	PART NO.	MAX.	MIN.	MAX.	MIN.	
1/4-20	AU1420ACC	1/4-28	AU1428ACC	.438	.428	.226	.212	6.7
5/16-18	AU51618ACC	5/16-24	AU51624ACC	.500	.489	.273	.258	10.0
3/8-16	AU3816ACC	3/8-24	AU3824ACC	.562	.551	.337	.320	14.7
7/16-14	AU71614ACC	7/16-20	AU71620ACC	.688	.675	.385	.365	25.0
1/2-13	AU1213ACC	1/2-20	AU1220ACC	.750	.736	.448	.427	34.7
9/16-12	AU91612ACC	9/16-18	AU91618ACC	.875	.861	.496	.473	53.7
5/8-11	AU5811ACC	5/8-18	AU5818ACC	.938	.922	.559	.535	70.0
3/4-10	AU3410ACC	3/4-16	AU3416ACC	1.125	1.088	.665	.617	115.0
7/8-9	AU789ACC	7/8-14	AU7814ACC	1.312	1.269	.776	.724	207.0
1"-8	AU18ACC	1"-14	AU114ACC	1.500	1.450	.887	.831	260.0
1 1/8-7	AU1187ACC	1 1/8-12	AU11812ACC	1.688	1.631	.999	.939	377.9
1 1/4-7	AU1147ACC	1 1/4-12	AU11412ACC	1.875	1.812	1.094	1.030	500.0

* Common finish listed — other finishes available.

TABLE OF CONTENTS

PREVAILING TORQUE – INCH

Automation Locknuts	1
Grade A, B, C	
Flange Locknuts	
Grade F	2-3
Grade G	4
Large Flange	5
Grade F	
Nylon Insert Flange Locknuts	5
Finished Hex, Centerlock	6
Finished Hex, Toplock	7
Full Collar/Thin Collar	8
Grade C	
Jam, Centerlock, Toplock	9
Machine Screw Locknuts	10
Acorn, Centerlock	10
Weldnuts	11

PREVAILING TORQUE – METRIC

Weldnuts	11
Automation	12
Class 8 and 10	
Flange Cone	13
Class 8 and 10	
Flange Locknut, DIN 6923	14
Class 8 and 10	

TECHNICAL SPECIFICATIONS15-17



LOCKNUT TECHNOLOGY INC.
Registered Identification Symbol

A WORD ABOUT LOCKNUT TECHNOLOGY

LOCKNUT TECHNOLOGY INC is a manufacturer and processor of all metal prevailing torque locknuts. Our technical leadership, coupled with old-fashioned customer service, allows us to offer our customers unsurpassed quality, value and on-time delivery.

All of our locknuts incorporate a precision thread-deflection process using state-of-the-art manufacturing equipment. Our product is produced to IFI specifications 100/107. Special low or high torque values can be produced to customer request.

All of our thread-deflection options can also be installed on your product. Simply send us your free-running nuts and we will convert them to locknuts.

A WORD ABOUT QUALITY

LOCKNUT TECHNOLOGY INC is operating under ISO9001-2000 registration to meet world class quality standards. Every part is fully traceable with lot number identification on cartons, packing slips and invoices. Our in-house lab is fully equipped to perform any of your certification requirements, including Level III PPAPs.

Quality is not inspected in, but built into every product using state-of-the-art production equipment. This allows us to offer special high or low torque requirements, as well as the fastest turnaround time in the industry.

Our registered product trademark is your assurance of full lot traceability and full performance satisfaction.

For your best value,
trust our manufacturing
capability, dependability and
consistency of products

GET THE
LOCKNUT TECHNOLOGY INC
ADVANTAGE

Proof Loads, Clamp Loads, and Prevailing-Torques for Coarse Thread Series Grades A, B, and C Hex Nuts and Grades F and G Hex Flange Nuts

Nut Size and Threads per Inch	Grade A Nuts		Grade B Nuts		Grade C Nuts		Prevailing-Torque			Grade F Nuts		Grade G Nuts	
	Proof Load lb	Clamp Load lb	Proof Load lb	Clamp Load lb	Proof Load lb	Clamp Load lb	First Install max lb. in	First Removal min lb. in	Third Removal min lb. in	Proof Load lb	Clamp Load lb	Proof Load lb	Clamp Load lb
Coarse Thread Series													
No. 4 - 40	540	250	720	380	910	550	4.0	1.0	0.2				
6 - 32	820	370	1,100	580	1,350	810	8.0	1.5	0.5				
8 - 32	1,250	580	1,700	900	2,100	1,250	12.0	2.0	0.5				
10 - 24	1,550	720	2,100	1,100	2,600	1,550	17	2.5	1.0				
12 - 24	2,200	1,000	2,900	1,550	3,650	2,200	27	3.5	1.0				
1/4 - 20	2,900	1,300	3,800	2,000	4,750	2,850	40	5.0	1.5	3,800	2,000	4,750	2,850
5/16 - 18	4,700	2,150	6,300	3,350	7,850	4,700	80	8.0	2.5	6,300	3,350	7,850	4,700
3/8 - 16	7,000	3,200	9,300	4,950	11,600	6,950	110	12.0	4.0	9,300	4,950	11,600	6,950
7/16 - 14	9,550	4,400	12,800	6,800	15,900	9,600	135	17	5.0	12,800	6,800	15,900	9,600
1/2 - 13	12,800	5,850	17,000	9,050	21,300	12,800	204	22	7.5	17,000	9,050	21,300	12,800
9/16 - 12	16,400	7,550	21,800	11,600	27,300	16,400	300	30	10.0	21,800	11,600	27,300	16,400
5/8 - 11	20,300	9,300	27,200	14,500	33,900	20,300	420	39	12.5	27,200	14,500	33,900	20,300
3/4 - 10	30,000	13,800	40,100	21,300	50,100	30,100	540	58	20	40,100	21,300	50,100	30,100
7/8 - 9	41,600	12,400	55,400	29,500	69,300	41,600	840	88	30				
1 - 8	54,500	15,000	72,700	38,700	90,900	54,600	1080	120	40				
1-1/8 - 7	68,700	18,900	80,100	42,100	115,000	69,000	1200	150	50				
1-1/4 - 7	87,200	24,000	101,700	53,500	145,000	87,000	1320	188	60				
1-3/8 - 6	104,000	28,700	121,300	63,800	173,000	104,000	1620	220	70				
1-1/2 - 6	126,000	34,800	147,500	77,600	211,000	127,000	1800	260	90				

NOTE:

Clamp loads for Grades A, B, and C prevailing-torque nuts respectively equal 75 percent of the proof loads specified for Grades 2, 5 and 8 bolts in SAE J429. Clamp loads for Grades B and C prevailing-torque nuts also respectively equal 75 percent of the proof loads specified for ASTM A449 and ASTM A354 Grade BD bolts. Clamp loads for Grades F and G prevailing-torque nuts respectively equal 75 percent of the proof loads specified for Grades 5 and 8 bolts in SAE J429 and are also respectively equal to 75 percent of the proof loads specified for ASTM A449 and ASTM A354 Grade BD bolts.

Proof Loads, Clamp Loads, and Prevailing-Torques for Fine Thread Series Grades A, B, and C Hex Nuts and Grades F and G Hex Flange Nuts

Nut Size and Threads per Inch	Grade A Nuts		Grade B Nuts		Grade C Nuts		Prevailing-Torque			Grade F Nuts		Grade G Nuts	
	Proof Load lb	Clamp Load lb	Proof Load lb	Clamp Load lb	Proof Load lb	Clamp Load lb	First Install max lb. in	First Removal min lb. in	Third Removal min lb. in	Proof Load lb	Clamp Load lb	Proof Load lb	Clamp Load lb
Fine Thread Series													
No. 4 - 48	600	270	790	420	990	600	4.0	1.0	0.2				
6 - 40	900	420	1,200	640	1,500	900	8.0	1.5	0.5				
8 - 36	1,350	610	1,750	930	2,200	1,300	12.0	2.0	0.5				
10 - 32	1,800	840	2,400	1,300	3,000	1,800	17	2.5	1.0				
12 - 28	2,300	1,050	3,100	1,650	3,900	2,350	27	3.5	1.0				
1/4 - 28	3,300	1,500	4,350	2,300	5,450	3,250	40	5.0	1.5	4,350	2,300	5,450	3,250
5/16 - 24	5,200	2,400	6,950	3,700	8,700	5,200	80	8.0	2.5	6,950	3,700	8,700	5,200
3/8 - 24	7,900	3,600	10,500	5,600	13,200	7,900	110	12.0	4.0	10,500	5,600	13,200	7,900
7/16 - 20	10,700	4,900	14,200	7,550	17,800	10,700	135	17	5.0	14,200	7,550	17,800	10,700
1/2 - 20	14,400	6,550	19,200	10,200	24,000	14,400	204	22	7.5	19,200	10,200	24,000	14,400
9/16 - 18	18,300	8,350	24,400	13,000	30,400	18,300	300	30	10.0	24,400	13,000	30,400	18,300
5/8 - 18	22,900	10,500	30,700	16,300	38,400	23,000	420	39	12.5	30,700	16,300	38,400	23,000
3/4 - 16	33,600	15,400	44,800	23,800	56,000	33,600	540	58	20	44,800	23,800	56,000	33,600
7/8 - 14	45,800	12,600	61,100	32,400	76,400	45,800	840	88	30				
1 - 14	61,100	16,800	81,500	43,300	101,900	61,100	1080	120	40				
1 - 12	59,700	16,400	79,600	42,300	99,500	59,700	1080	120	40				
1-1/8 - 12	76,900	21,200	89,900	47,500	128,000	76,800	1200	150	50				
1-1/4 - 12	96,600	26,600	113,000	59,700	161,000	96,600	1320	188	60				
1-3/8 - 12	118,000	32,500	138,000	72,900	197,000	118,000	1620	220	70				
1-1/2 - 12	142,000	39,100	166,000	87,700	237,000	142,000	1800	260	90				

NOTE:

Proof loads for Grades F and G flange prevailing-torque nuts are based on 120,000 psi and 150,000 psi, respectively.

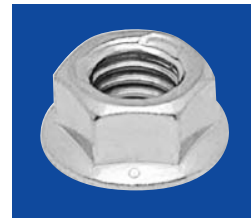
FLANGE NUTS

FLANGE CENTER LOCKNUTS



GRADE F — ZINC PLATED*

COARSE THREAD		FINE THREAD		WIDTH ACROSS FLATS		THICKNESS		FLANGE DIAMETER		WEIGHT PER M
SIZE	PART NO.	SIZE	PART NO.	MAX.	MIN.	MAX.	MIN.	MAX.	MIN.	
1/4-20	SF1420CFZ	---	---	.438	.428	.236	.222	.560	.530	9.0
1/4-20	RF1420CFZ	1/4-28	---	.438	.428	.236	.222	.594	.574	9.2
5/16-18	RF51618CFZ	5/16-24	RF51624CFZ	.500	.489	.283	.268	.680	.660	13.5
3/8-16	RF3816CFZ	3/8-24	---	.562	.551	.347	.330	.750	.728	19.1
7/16-14	RF71614CFZ	7/16-20	---	.688	.675	.395	.375	.937	.910	35.5
1/2-13	RF1213CFZ	1/2-20	---	.750	.736	.458	.437	1.031	1.000	47.1
5/8-11	RF5811CFZ	5/8-18	RF5818CFZ	.938	.922	.569	.545	1.330	---	72.0
3/4-10	RF3410CFZ	---	---	1.125	1.088	.675	.627	1.585	---	136.0
1-8	RF18CFZ	1-14	RF114CFZ	1.500	1.450	.900	.850	2.060	---	318.0



FLANGE TOP LOCKNUTS

GRADE F — ZINC PLATED*

COARSE THREAD		FINE THREAD		WIDTH ACROSS FLATS		THICKNESS		FLANGE DIAMETER		WEIGHT PER M
SIZE	PART NO.	SIZE	PART NO.	MAX.	MIN.	MAX.	MIN.	MAX.	MIN.	
1/4-20	SF1420TFZ	---	---	.438	.428	.236	.222	.560	.530	9.0
1/4-20	RF1420TFZ	1/4-28	---	.438	.428	.236	.222	.594	.574	9.2
5/16-18	RF51618TFZ	5/16-24	RF51624TFZ	.500	.489	.283	.268	.680	.660	13.5
3/8-16	RF3816TFZ	3/8-24	---	.562	.551	.347	.330	.750	.728	19.1
7/16-14	RF71614TFZ	7/16-20	---	.688	.675	.395	.375	.937	.910	35.5
1/2-13	RF1213TFZ	1/2-20	---	.750	.736	.458	.437	1.031	1.000	47.1
5/8-11	RF5811TFZ	5/8-18	RF5818TFZ	.938	.922	.569	.545	1.330	---	72.0
1-8	RF18TFZ	1-14	RF114TFZ	1.500	1.450	.900	.850	2.060	---	318.0

* Common finish listed — other finishes available.

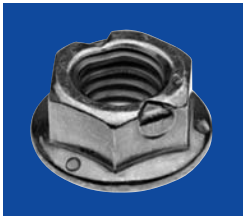
FLANGE NUTS



FLANGE OVAL LOCKNUTS

GRADE F — ZINC PLATED*

COARSE THREAD		FINE THREAD		WIDTH ACROSS FLATS		THICKNESS		FLANGE DIAMETER		WEIGHT PER M
SIZE	PART NO.	SIZE	PART NO.	MAX.	MIN.	MAX.	MIN.	MAX.	MIN.	
1/4-20	SF1420OFZ	---	---	.438	.428	.236	.222	.560	.530	9.9
1/4-20	RF1420OFZ	1/4-28	---	.438	.428	.236	.222	.594	.574	9.2
5/16-18	RF51618OFZ	5/16-24	RF51624OFZ	.500	.489	.283	.268	.680	.660	13.5
3/8-16	RF3816OFZ	3/8-24	---	.562	.551	.347	.330	.750	.728	19.1
7/16-14	RF71614OFZ	7/16-20	---	.688	.675	.395	.375	.937	.910	35.5
1/2-13	RF1213OFZ	1/2-20	---	.750	.736	.458	.437	1.031	1.000	47.1
5/8-11	RF5811OFZ	5/8-18	RF5818OFZ	.938	.922	.569	.545	1.330	---	72.0
3/4-10	RF3410CFZ	---	---	1.125	1.088	.675	.627	1.585	---	136.0
1-8	RF18OFZ	1-14	RF114OFZ	1.500	1.450	.900	.850	2.060	---	318.0



FLANGE WRAP LOCKNUTS

GRADE F — ZINC PLATED*

COARSE THREAD		FINE THREAD		WIDTH ACROSS FLATS		THICKNESS		FLANGE DIAMETER		WEIGHT PER M
SIZE	PART NO.	SIZE	PART NO.	MAX.	MIN.	MAX.	MIN.	MAX.	MIN.	
1/4-20	SF1420WFZ	---	---	.438	.428	.236	.222	.560	.530	9.9
1/4-20	RF1420WFZ	1/4-28	---	.438	.428	.236	.222	.594	.574	9.2
5/16-18	RF51618WFZ	5/16-24	RF51624WFZ	.500	.489	.283	.268	.680	.660	13.5
3/8-16	RF3816WFZ	3/8-24	---	.562	.551	.347	.330	.750	.728	19.1
7/16-14	RF71614WFZ	7/16-20	---	.688	.675	.395	.375	.937	.910	35.5
1/2-13	RF1213WFZ	1/2-20	---	.750	.736	.458	.437	1.031	1.000	47.1
5/8-11	RF5811WFZ	5/8-18	RF5818WFZ	.938	.922	.569	.545	1.330	---	72.0
1-8	RF18WFZ	1-14	RF114WFZ	1.500	1.450	.900	.850	2.060	---	318.0

* Common finish listed — other finishes available.

FLANGE NUTS



FLANGE CONE LOCKNUTS

GRADE G — ZINC PLATED*

COARSE THREAD		FINE THREAD		WIDTH ACROSS FLATS		HEIGHT	FLANGE DIAMETER	WEIGHT PER M
SIZE	PART NO.	SIZE	PART NO.	MAX.	MIN.	MAX.	MAX.	
1/4-20	AF1420OGZ	1/4-28	AF1428OGZ	.4385	.428	.300	.560	9.6
5/16-18	AF51618OGZ	5/16-24	AF51624OGZ	.502	.489	.365	.680	14.8
3/8-16	AF3816OGZ	3/8-24	---	.5645	.551	.425	.810	25.0
7/16-14	AF71614OGZ	7/16-20	---	.6895	.675	.495	.930	41.0
1/2-13	AF1213OGZ	1/2-20	AF1220OGZ	.752	.736	.555	1.070	51.0
5/8-11	AF5811OGZ	5/8-18	AF5818OGZ	.9395	.922	.690	1.330	107.0
3/4-10	AF3410OGZ	3/4-16	AF3416OGZ	1.127	1.088	.825	1.585	166.6
1-8	AF18OGZ	1-14	AF114OGZ	1.502	1.450	1.060	2.060	318.0



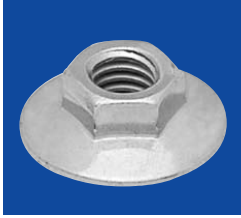
REGULAR FLANGE LOCKNUTS

GRADE G — ZINC PLATED*

COARSE THREAD		FINE THREAD		WIDTH ACROSS FLATS		HEIGHT	FLANGE DIAMETER	WEIGHT PER M
SIZE	PART NO.	SIZE	PART NO.	MAX.	MIN.	MAX.	MAX.	
1/4-20	RF1420OGZ	1/4-28	---	.4385	.428	.300	.560	9.6
5/16-18	RF51618OGZ	5/16-24	---	.502	.489	.365	.680	14.8
3/8-16	RF3816OGZ	3/8-24	---	.5645	.551	.425	.810	25.0
7/16-14	RF71614OGZ	7/16-20	RF71620OGZ	.6895	.675	.495	.930	41.0
1/2-13	RF1213OGZ	1/2-20	---	.752	.736	.555	1.070	51.0
5/8-11	RF5811OGZ	5/8-18	RF5818OG	.9395	.922	.690	1.330	107.0
3/4-10	RF3410OGZ	3/4-16	RF3416OG	1.127	1.088	.825	1.585	166.6
7/8-9	RF789OGZ	---	---	1.312	1.269	.790	1.750	260.0
1-8	RF18OGZ	1-14	RF114OG	1.502	1.450	1.060	2.060	318.0

* Common finish listed — other finishes available.

FLANGE NUTS



LARGE FLANGE TOP LOCKNUTS

GRADE F — ZINC PLATED*

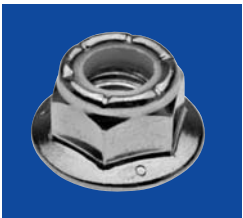
COARSE THREAD		WIDTH ACROSS FLATS		THICKNESS		FLANGE DIAMETER	WEIGHT PER M
SIZE	PART NO.	MAX.	MIN.	MAX.	MIN.	MAX.	
1/4-20	LF1420TFZ	.438	.428	.312	.281	.728	11.8
5/16-18	LF51618TFZ	.500	.489	.375	.343	.820	22.5
3/8-16	LF3816TFZ	.562	.551	.406	.390	.915	28.2
1/2-13	LF1213TFZ	.750	.736	.515	.485	1.205	55.0



LARGE FLANGE CENTER LOCKNUTS

GRADE F — ZINC PLATED*

COARSE THREAD		WIDTH ACROSS FLATS		THICKNESS		FLANGE DIAMETER	WEIGHT PER M
SIZE	PART NO.	MAX.	MIN.	MAX.	MIN.	MAX.	
1/4-20	LF1420CFZ	.438	.428	.312	.281	.728	11.8
5/16-18	LF51618CFZ	.500	.489	.375	.343	.820	22.5
3/8-16	LF3816CFZ	.562	.551	.406	.390	.915	28.2
1/2-13	LF1213CFZ	.750	.736	.515	.485	1.205	55.0



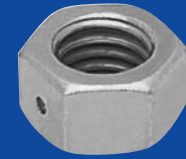
NYLON INSERT FLANGE LOCKNUTS

GRADE F — ZINC YELLOW PLATED*

COARSE THREAD		WIDTH ACROSS FLATS		THICKNESS		FLANGE DIAMETER	WEIGHT PER M
SIZE	PART NO.	MAX.	MIN.	MAX.	MIN.	MAX.	
1/4-20	NF1420FZY	.438	.428	.300	----	.560	11.8
5/16-18	NF51618FZY	.500	.489	.365	----	.680	22.5
3/8-16	NF3816FZY	.562	.551	.425	----	.810	28.2
1/2-13	NF1213FZY	.750	.736	.555	----	1.070	55.0

* Common finish listed — other finishes available.

HEX LOCKNUTS



FINISHED HEX CENTER LOCKNUTS

GRADE A — ZINC / YELLOW*

COARSE THREAD		FINE THREAD		WIDTH ACROSS FLATS		THICKNESS		WEIGHT PER M
SIZE	PART NO.	SIZE	PART NO.	MAX.	MIN.	MAX.	MIN.	
10-24	FH1024CAZY	10-32	FH1032CAZY	.375	.362	.203	.187	5.0
1/4-20	FH1420CAZY	1/4-28	FH1428CAZY	.438	.428	.226	.212	6.7
5/16-18	FH51618CAZY	5/16-24	FH51624CAZY	.500	.489	.273	.258	10.0
3/8-16	FH3816CAZY	3/8-24	FH3824CAZY	.562	.551	.337	.320	14.7
7/16-14	FH71614CAZY	7/16-20	FH71620CAZY	.688	.675	.385	.365	26.3
1/2-13	FH1213CAZY	1/2-20	FH1220CAZY	.750	.736	.448	.427	34.7
9/16-12	FH91612CAZY	9/16-18	FH91618CAZY	.875	.861	.496	.473	58.0
5/8-11	FH5811CAZY	5/8-18	FH5818CAZY	.938	.922	.559	.535	66.0
3/4-10	FH3410CAZY	3/4-16	FH3416CAZY	1.125	1.088	.665	.617	115.0
7/8-9	FH789CAZY	7/8-14	FH7814CAZY	1.312	1.269	.776	.724	178.0
1"-8	FH18CAZY	1"-14	FH114CAZY	1.500	1.450	.887	.831	268.0

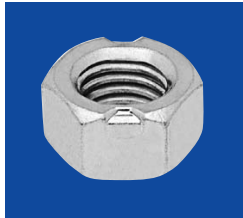
FINISHED HEX CENTER LOCKNUTS

GRADE B — ZINC / YELLOW*

COARSE THREAD		FINE THREAD		WIDTH ACROSS FLATS		THICKNESS		WEIGHT PER M
SIZE	PART NO.	SIZE	PART NO.	MAX.	MIN.	MAX.	MIN.	
10-24	FH1024CBZY	10-32	FH1032CBZY	.375	.362	.203	.187	5.0
1/4-20	FH1420CBZY	1/4-28	FH1428CBZY	.438	.428	.226	.212	6.7
5/16-18	FH51618CBZY	5/16-24	FH51624CBZY	.500	.489	.273	.258	10.0
3/8-16	FH3816CBZY	3/8-24	FH3824CBZY	.562	.551	.337	.320	14.7
7/16-14	FH71614CBZY	7/16-20	FH71620CBZY	.688	.675	.385	.365	26.3
1/2-13	FH1213CBZY	1/2-20	FH1220CBZY	.750	.736	.448	.427	34.7
9/16-12	FH91612CBZY	9/16-18	FH91618CBZY	.875	.861	.496	.473	58.0
5/8-11	FH5811CBZY	5/8-18	FH5818CBZY	.938	.922	.559	.535	66.0
3/4-10	FH3410CBZY	3/4-16	FH3416CBZY	1.125	1.088	.665	.617	115.0
7/8-9	FH789CBZY	7/8-14	FH7814CBZY	1.312	1.269	.776	.724	178.0
1"-8	FH18CBZY	1"-14	FH114CBZY	1.500	1.450	.887	.831	268.0

*Also available in Grade "C". *Common finish listed — other finishes available.

HEX LOCKNUTS



FINISHED HEX TOP LOCKNUTS

GRADE A — ZINC*

COARSE THREAD		FINE THREAD		WIDTH ACROSS FLATS		THICKNESS		WEIGHT PER M
SIZE	PART NO.	SIZE	PART NO.	MAX.	MIN.	MAX.	MIN.	
10-24	FH1024TAZ	10-32	FH1032TAZ	.375	.362	.203	.187	5.0
1/4-20	FH1420TAZ	1/4-28	FH1428TAZ	.438	.428	.226	.212	6.7
5/16-18	FH51618TAZ	5/16-24	FH51624TAZ	.500	.489	.273	.258	10.0
3/8-16	FH3816TAZ	3/8-24	FH3824TAZ	.562	.551	.337	.320	14.7
7/16-14	FH71614TAZ	7/16-20	FH71620TAZ	.688	.675	.385	.365	26.3
1/2-13	FH1213TAZ	1/2-20	FH1220TAZ	.750	.736	.448	.427	34.7
9/16-12	FH91612TAZ	9/16-18	FH91618TAZ	.875	.861	.496	.473	58.0
5/8-11	FH5811TAZ	5/8-18	FH5818TAZ	.938	.922	.559	.535	66.0
3/4-10	FH3410TAZ	3/4-16	FH3416TAZ	1.125	1.088	.665	.617	115.0
7/8-9	FH789TAZ	7/8-14	FH7814TAZ	1.312	1.269	.776	.724	178.0
1"-8	FH18TAZ	1"-14	FH114TAZ	1.500	1.450	.887	.831	268.0

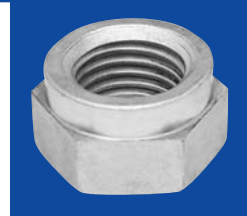
FINISHED HEX TOP LOCKNUTS

GRADE B — ZINC

COARSE THREAD		FINE THREAD		WIDTH ACROSS FLATS		THICKNESS		WEIGHT PER M
SIZE	PART NO.	SIZE	PART NO.	MAX.	MIN.	MAX.	MIN.	
10-24	FH1024TBZ	10-32	FH1032TBZ	.375	.362	.203	.187	5.0
1/4-20	FH1420TBZ	1/4-28	FH1428TBZ	.438	.428	.226	.212	6.7
5/16-18	FH51618TBZ	5/16-24	FH51624TBZ	.500	.489	.273	.258	10.0
3/8-16	FH3816TBZ	3/8-24	FH3824TBZ	.562	.551	.337	.320	14.7
7/16-14	FH71614TBZ	7/16-20	FH71620TBZ	.688	.675	.385	.365	26.3
1/2-13	FH1213TBZ	1/2-20	FH1220TBZ	.750	.736	.448	.427	34.7
9/16-12	FH91612TBZ	9/16-18	FH91618TBZ	.875	.861	.496	.473	58.0
5/8-11	FH5811TBZ	5/8-18	FH5818TBZ	.938	.922	.559	.535	66.0
3/4-10	FH3410TBZ	3/4-16	FH3416TBZ	1.125	1.088	.665	.617	115.0
7/8-9	FH789TBZ	7/8-14	FH7814TBZ	1.312	1.269	.776	.724	178.0
1"-8	FH18TBZ	1"-14	FH114TBZ	1.500	1.450	.887	.831	268.0

* Also available in Grade "C". * Common finish listed — other finishes available.

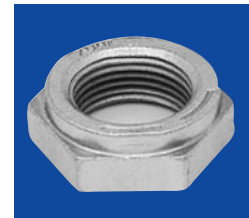
COLLAR LOCKNUTS



FULL COLLAR LOCKNUTS

GRADE C — CAD PLATED*

COARSE		FINE		WIDTH ACROSS FLATS		THICKNESS		WEIGHT PER M
SIZE	PART NO.	SIZE	PART NO.	MAX.	MIN.	MAX.	MIN.	
1 ¹ / ₈ -7	CF1187OCC	1 ¹ / ₈ -12	CF11812OCC	1.687	1.631	.999	.939	354
1 ¹ / ₄ -7	CF1147OCC	1 ¹ / ₄ -12	CF11412OCC	1.875	1.812	1.094	1.030	480
1 ³ / ₈ -6	CF1386OCC	1 ³ / ₈ -12	CF13812OCC	2.062	1.994	1.206	1.138	672
1 ¹ / ₂ -6	CF1126OCC	1 ¹ / ₂ -12	CF11212OCC	2.250	2.175	1.317	1.245	820
1 ³ / ₄ -5	CF1345OCC	1 ³ / ₄ -12	CF13412OCC	2.625	2.538	1.540	1.460	1400
2-4 ¹ / ₂	CF2412OCC	2-12	CF212OCC	3.00	2.900	1.763	1.675	2000
2 ¹ / ₄ -4 ¹ / ₂	CF214412OCC	2 ¹ / ₄ -12	CF21412OCC	3.375	3.275	2.016	1.920	2850
2 ¹ / ₂ -4	CF2124OCC	2 ¹ / ₂ -12	CF21212OCC	3.750	3.620	2.239	2.135	3900
3-4	CF34OCC	3-12	CF312OCC	4.500	4.350	2.685	2.565	6500



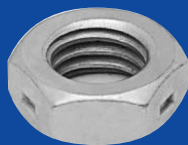
THIN COLLAR LOCKNUTS

GRADE C — CAD PLATED*

COARSE		FINE		(F) WIDTH ACROSS FLATS		(H) THICKNESS		WEIGHT PER M
SIZE	PART NO.	SIZE	PART NO.	MAX.	MIN.	MAX.	MIN.	
³ / ₈ -16	CT3816OCC	³ / ₈ -24	CT3824OCC	.562	.551	.227	.212	10
¹ / ₂ -13	CT1213OCC	¹ / ₂ -20	CT1220OCC	.750	.736	.323	.302	24
⁹ / ₁₆ -12	CT91612OCC	⁹ / ₁₆ -18	CT91618OCC	.875	.861	.324	.301	32
⁵ / ₈ -11	CT5811OCC	⁵ / ₈ -18	CT5818OCC	.938	.922	.387	.363	44
³ / ₄ -10	CT3410OCC	³ / ₄ -16	CT3416OCC	1.125	1.088	.446	.398	65
⁷ / ₈ -9	CT789OCC	⁷ / ₈ -14	CT7814OCC	1.312	1.269	.510	.458	106
1-8	CT18OCC	1-14	CT114OCC	1.500	1.450	.575	.519	160
1 ¹ / ₈ -7	CT1187OCC	1 ¹ / ₈ -12	CT11812OCC	1.687	1.631	.639	.579	230
1 ¹ / ₄ -7	CT1147OCC	1 ¹ / ₄ -12	CT11412OCC	1.875	1.812	.751	.687	332
1 ³ / ₈ -6	CT1386OCC	1 ³ / ₈ -12	CT13812OCC	2.062	1.994	.815	.747	400
1 ¹ / ₂ -6	CT1126OCC	1 ¹ / ₂ -12	CT11212OCC	2.250	2.175	.880	.808	550

* Common finish listed — other finishes available.

JAM NUTS



JAM CENTER LOCKNUTS

GRADE A — ZINC PLATED*

COARSE THREAD		FINE THREAD		WIDTH ACROSS FLATS		THICKNESS		WEIGHT PER M
SIZE	PART NO.	SIZE	PART NO.	MAX.	MIN.	MAX.	MIN.	
1/4-20	FJ1420CAZ	1/4-28	FJ1428CAZ	.438	.428	.164	.150	5.0
5/16-18	FJ51618CAZ	5/16-24	FJ51624CAZ	.500	.489	.195	.180	7.2
3/8-16	FJ3816CAZ	3/8-24	FJ3824CAZ	.563	.551	.227	.210	10.3
7/16-14	FJ71614CAZ	7/16-20	FJ71620CAZ	.688	.675	.260	.240	18.4
1/2-13	FJ1213CAZ	1/2-20	FJ1220CAZ	.750	.736	.323	.302	25.6
5/8-11	FJ5811CAZ	5/8-18	FJ5818CAZ	.938	.922	.387	.363	48.2
3/4-10	FJ3410CAZ	3/4-16	FJ3416CAZ	1.125	1.088	.446	.398	77.0
7/8-9	FJ789CAZ	7/8-14	FJ7814CAZ	1.312	1.269	.510	.458	120.0
1"-8	FJ18CAZ	1"-14	FJ114CAZ	1.500	1.450	.575	.519	176.0
1 1/8-7	FJ1187CAZ	1 1/8-12	FJ11812CAZ	1.688	1.631	.639	.579	247.0
1 1/4-7	FJ1147CAZ	1 1/4-12	FJ11412CAZ	1.875	1.812	.751	.687	361.0



JAM TOP LOCKNUTS

GRADE A — ZINC PLATED*

COARSE THREAD		FINE THREAD		WIDTH ACROSS FLATS		THICKNESS		WEIGHT PER M
SIZE	PART NO.	SIZE	PART NO.	MAX.	MIN.	MAX.	MIN.	
1/4-20	FJ1420TAZ	1/4-28	FJ1428TAZ	.438	.428	.164	.150	5.0
5/16-18	FJ51618TAZ	5/16-24	FJ51624TAZ	.500	.489	.195	.180	7.2
3/8-16	FJ3816TAZ	3/8-24	FJ3824TAZ	.563	.551	.227	.210	10.3
7/16-14	FJ71614TAZ	7/16-20	FJ71620TAZ	.688	.675	.260	.240	18.4
1/2-13	FJ1213TAZ	1/2-20	FJ1220TAZ	.750	.736	.323	.302	25.6
5/8-11	FJ5811TAZ	5/8-18	FJ5818TAZ	.938	.922	.387	.363	48.2
3/4-10	FJ3410TAZ	3/4-16	FJ3416TAZ	1.125	1.088	.446	.398	77.0
7/8-9	FJ789TAZ	7/8-14	FJ7814TAZ	1.312	1.269	.510	.458	120.0
1"-8	FJ18TAZ	1"-14	FJ114TAZ	1.500	1.450	.575	.519	176.0
1 1/8-7	FJ1187TAZ	1 1/8-12	FJ11812TAZ	1.688	1.631	.639	.579	247.0
1 1/4-7	FJ1147TAZ	1 1/4-12	FJ11412TAZ	1.875	1.812	.751	.687	361.0

*Common finish listed — other finishes available.

LOCKNUTS

MACHINE SCREW TOP LOCKNUTS

ZINC PLATED*

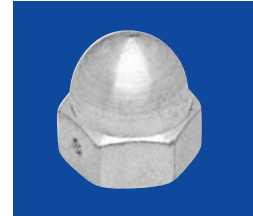
COARSE THREAD		FINE THREAD		WIDTH ACROSS FLATS		THICKNESS		WEIGHT PER M
SIZE	PART NO.	SIZE	PART NO.	MAX.	MIN.	MAX.	MIN.	
4-40	MH440TAZ		---	.250	.241	.098	.087	1.5
6-32	MH632TAZ		---	.312	.302	.114	.102	2.0
8-32	MH832TAZ		---	.344	.332	.130	.117	3.0
10-24	MH1024TAZ	10-32	MH1032TAZ	.375	.362	.130	.117	5.5
12-24	MH1224TAZ	12-28	MH1228TAZ	.438	.423	.161	.148	6.0
1/4-20	MH1420TAZ	1/4-28	MH1428TAZ	.438	.423	.193	.178	6.0

*Common finish listed — other finishes available.
Above item available in other material (Brass, Stainless Steel, etc.)

ACORN CENTER LOCKNUTS

LOW CROWN — ZINC PLATED*

LOW CROWN		WIDTH ACROSS FLATS		THICKNESS		WEIGHT PER M
SIZE	PART NO.	MAX.	MIN.	MAX.	MIN.	
6-32	LA632CAZ	.312	.302	.350	.338	4.6
8-32	LA832CAZ	.344	.332	.350	.338	5.4
10-24	LA1024CAZ	.375	.362	.416	.396	8.4
1/4-20	LA1420CAZ	.437	.428	.478	.458	11.5
5/16-18	LA51618CAZ	.500	.489	.541	.521	16.3
3/8-16	LA3816CAZ	.562	.551	.635	.615	22.8
1/2-13	LA1213CAZ	.750	.736	.818	.805	51.0



HIGH CROWN — ZINC PLATED*

HIGH CROWN		WIDTH ACROSS FLATS		THICKNESS		WEIGHT PER M
SIZE	PART NO.	MAX.	MIN.	MAX.	MIN.	
10-24	HA1024CAZ	.375	.362	.525	.505	10.4
1/4-20	HA1420CAZ	.437	.428	.603	.583	14.3
5/16-18	HA51618CAZ	.500	.489	.697	.677	20.3
3/8-16	HA3816CAZ	.562	.551	.791	.771	28.0
1/2-13	HA1213CAZ	.750	.736	1.033	.995	78.0

*Common finish listed — other finishes available.
Above item available in other material (Brass, Stainless Steel, etc.). Fine thread is also available.

WELD LOCKNUTS



- The standard series weld nut is designed for use with Grade 2 bolts.
- All weld nuts are also available with a prevailing torque feature.

HEX PILOTED

SHORT PILOT STANDARD SERIES

SHORT PILOT		WIDTH ACROSS FLATS		THICKNESS		PROJECT HEIGHT +/- .003	PILOT HEIGHT +/- .005	PILOT DIA +/- .012	WEIGHT PER M
SIZE	PART NO.	MAX.	MIN.	MAX.	MIN.				
1/4-20	SW14202	.500	.489	.197	.177	.025	.040	.406	9.3
5/16-18	SW516182	.562	.551	.229	.209	.025	.040	.469	13.7
3/8-16	SW38162	.625	.612	.260	.240	.030	.050	.531	18.9
1/2-13	SW12132	.813	.781	.385	.365	.035	.060	.719	45.0
5/8-11	SW58112	.937	.922	.447	.427	.035	.060	.781	62.0

HEX PILOTED

LONG PILOT STANDARD SERIES

LONG PILOT		WIDTH ACROSS FLATS		THICKNESS		PROJECT HEIGHT +/- .003	PILOT HEIGHT +/- .005	PILOT DIA +/- .012	WEIGHT PER M
SIZE	PART NO.	MAX.	MIN.	MAX.	MIN.				
1/4-20	LW14202	.500	.489	.197	.177	.040	.085	.406	10.6
5/16-18	LW516182	.562	.551	.229	.209	.040	.085	.469	13.7
3/8-16	LW38162	.625	.612	.260	.240	.040	.085	.531	18.9
1/2-13	LW12132	.813	.781	.385	.365	.040	.085	.719	45.0
5/8-11	LW58112	.937	.922	.447	.427	.040	.085	.781	62.0

WELD NUT – METRIC

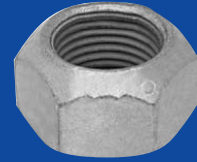
SHORT PILOT		WIDTH ACROSS		THICKNESS		PROJECT HEIGHT +/- .08	PILOT HEIGHT +/- .013	WEIGHT PER M
SIZE	PART NO.	MAX.	MIN.	MAX.	MIN.			
M6.1	SW.6C	13.00	12.73	5.6	5.1	.044	1.00	9.00
M8 x 1.25	SW.8C	15.00	14.73	7.1	6.6	.044	1.00	11.00
M10 x 1.5	SW10C	18.00	17.73	8.2	7.7	.055	1.16	13.50
M12 x 1.75	SW12C	21.00	20.67	9.9	9.4	.065	1.26	16.00

Available in 3 and 6 projection.

METRIC LOCKNUTS

METRIC AUTOMATION

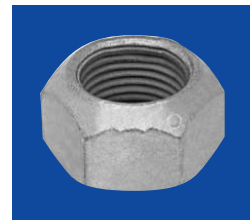
U.S. AUTOMOTIVE STANDARDS (STYLE) 1 CLASS 10



SIZE	PART NO.	WIDTH ACROSS FLATS		OVERALL THICKNESS		WEIGHT PER M
		MAX.	MIN.	MAX.	MIN.	
M6 x 1	AU.6CAU1	10.00	9.78	5.75	5.40	2.6
M8 x 1.25	AU.8CAU1	13.00	12.73	6.90	6.50	5.2
M10 x 1.5	AU.10CAU1	15.00	14.73	9.20	8.94	8.4
M12 x 1.75	AU.12CAU1	18.00	17.73	11.10	10.80	13.5
M14 x 2	AU.14CAU1	21.00	20.67	12.45	11.90	21.6
M16 x 2	AU.16CAU1	24.00	23.67	14.50	13.90	30.7
M20 x 2.5	AU.20CAU1	30.00	29.16	18.10	17.40	65.0
M24 x 3	AU.24CAU1	36.00	35.00	22.50	20.90	126.10

U.S. AUTOMOTIVE STANDARDS (STYLE) 2 CLASS 9

SIZE	PART NO.	WIDTH ACROSS FLATS		OVERALL THICKNESS		WEIGHT PER M
		MAX.	MIN.	MAX.	MIN.	
M6 x 1	AU.6CAU9	10.00	9.78	6.70	6.20	2.8
M8 x 1.25	AU.8CAU9	13.00	12.73	7.80	7.40	5.6
M10 x 1.5	AU.10CAU9	15.00	14.73	11.20	10.20	9.8
M12 x 1.75	AU.12CAU9	18.00	17.73	12.80	12.30	16.5
M14 x 2	AU.14CAU9	21.00	20.67	15.40	14.30	22.7
M16 x 2	AU.16CAU9	24.00	23.67	17.90	16.80	37.6
M20 x 2.5	AU.20CAU9	30.00	29.16	21.80	20.20	78.1
M24 x 3	AU.24CAU9	36.00	35.00	26.40	24.30	147.3



DIN 980V CLASS 8 & 10 AUTOMATION LOCKNUTS

SIZE	CLASS 8	CLASS 10	WIDTH ACROSS FLATS		OVERALL THICKNESS		WEIGHT PER M
			MAX.	MIN.	MAX.	MIN.	
M6 x 1	AU.61V8	AU.61V1	10.00	9.78	6.00	5.70	5.5
M8 x 1.25	AU.8125V8	AU.8125V1	13.00	12.73	8.00	7.60	12.5
M10 x 1.5	AU.1015V8	AU.1015V1	17.00	16.73	10.00	9.00	27.5
M12 x 1.75	AU.12175V8	AU.12175V1	19.00	18.67	12.00	11.00	38.5
M14 x 2	AU.142V8	AU.142V1	22.00	21.67	14.00	12.00	61.0
M16 x 2	AU.162V8	AU.162V1	24.00	23.67	16.00	14.00	78.5
M20 x 2.5	AU.2025V8	AU.2025V1	30.00	29.16	20.00	18.00	151.5

FLANGE NUTS



METRIC FLANGE CONE LOCKNUTS*

U.S. AUTOMOTIVE STANDARDS – CLASS 10

SIZE	PART NO.	WIDTH ACROSS FLATS		THICKNESS		FLANGE DIA. MAX	WEIGHT PER M
		MAX.	MIN.	MAX.	MIN.		
M6 x 1	AF.6COU1	10.00	9.78	7.00	6.40	14.20	4.0
M8 x 1.25	AF.8COU1	13.00	12.73	9.10	8.40	17.60	7.9
M10 x 1.5	AF.10COU1	15.00	14.73	11.40	10.70	21.50	13.0
M12 x 1.75	AF.12COU1	18.00	17.73	13.00	12.80	25.60	22.1
M14 x 2	AF.14COU1	21.00	20.67	15.90	14.90	29.60	36.2
M16 x 2	AF.16COU1	24.00	23.67	18.30	17.60	34.20	45.0
M20 x 2.5	AF.20COU1	30.00	29.16	23.40	22.40	43.00	94.5
M24 X 3	AF.24COU1	36.00	35.00	26.00	24.00	49.00	168.2



METRIC FLANGE CONE LOCKNUTS*

U.S. AUTOMOTIVE STANDARDS – CLASS 9

SIZE	PART NO.	WIDTH ACROSS FLATS		THICKNESS		FLANGE DIA. MAX	WEIGHT PER M
		MAX.	MIN.	MAX.	MIN.		
M6 x 1	AF.6COU9	10.00	9.76	7.00	6.70	14.20	4.0
M8 x 1.25	AF.8COU9	13.00	12.73	9.10	8.40	17.60	7.9
M10 x 1.5	AF.10COU9	15.00	14.73	11.40	10.70	21.50	13.0
M12 x 1.75	AF.12COU9	18.00	17.73	15.00	14.00	25.60	24.7
M14 x 2	AF.14COU9	21.00	20.67	17.00	16.00	29.60	39.1
M16 x 2	AF.16COU9	24.00	23.67	19.30	18.00	34.20	53.5
M20 x 2.5	AF.20COU9	30.00	29.16	25.00	23.00	42.30	90.0

*All common plating finishes available.

DIN FLANGE LOCKNUTS



DIN 6923 WITH LOCK

CLASS 8 AND 10 METRIC FLANGE TOP LOCK – OVAL LOCK

SIZE	CLASS 8	CLASS 10	WIDTH ACROSS FLATS		THICKNESS		FLANGE DIA. MAX	WEIGHT PER M
			MAX.	MIN.	MAX.	MIN.		
M6 x 1	RF.61O38	RF.61O31	10.00	9.78	6.00	5.70	14.20	4.0
M8 x 1.25	RF.8125O38	RF.8125O31	13.00	12.73	8.00	7.60	17.90	8.2
M10 x 1.5	RF.1015O38	RF.1015O3	15.00	14.73	10.00	9.60	21.80	13.0
M12 x 1.75	RF.12175O38	RF.12175O31	18.00	17.73	12.00	11.60	26.00	24.5
M14 x 2	RF.142O38	RF.142O31	21.00	20.67	14.00	13.30	29.90	36.2



DIN 6923 WITH LOCK

CLASS 8 AND 9 METRIC FLANGE CENTER LOCK

SIZE	PART NO.	WIDTH ACROSS FLATS		THICKNESS		FLANGE DIA.	WEIGHT
		MAX.	MIN.	MAX.	MIN.		
M6 x 1	RF.61C38	10.00	9.78	6.00	5.70	14.20	4.0
M8 x 1.25	RF.8125C38	13.00	12.73	8.00	7.60	17.90	8.2
M10 x 1.5	RF.1015C38	15.00	14.73	10.00	9.60	21.80	13.0
M12 x 1.75	RF.12175C38	18.00	17.73	12.00	11.60	26.00	24.5

PREVAILING-TORQUE TYPE STEEL HEX AND HEX FLANGE NUTS

TECHNICAL

How do they work . . .

The top thread section of the nuts is scientifically displaced at two or three opposing areas. This displacement or deflection ovalizes the top threads of the nut and deflects these threads out of their helical configuration. The nature of this locking element is such that it remains spring-like through repeated applications and severe shock loads. The locking element firmly grips the flank, root and crest of the mating bolt threads.

The resulting compression grip forces metal-to-metal contact between the nut and bolt threads. This friction grip assures that the nut will stay "put" anywhere on the bolt and maintain the pre-set torque-tension relationship.

The Locknut starts freely on a bolt or stud like a common nut until the deflected thread portion is reached; then, it requires wrenching to final position anywhere on the mating part.

Nut/Bolt Compatibility

There are three grades of prevailing-torque type steel hex nuts designated as Grades A, B and C, respectively. There are two grades of prevailing-torque type steel hex flange nuts designated, respectively, as Grades F and G.

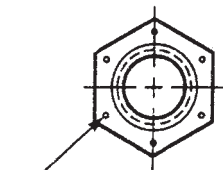
Each grade of nut is suggested for use with externally threaded components having specified minimum tensile strengths within the following values:

NUT/BOLT COMPATIBILITY

Grade of Nut	Specified Min Ultimate Tensile Strength of Bolt, ksi
Grade A	not greater than 90
Grades B and F	not greater than 120
Grade C	not less than 105, nor greater than 150
Grade G	not less than 120, nor greater than 150

Grade Marking and Identification

Grade A nuts need not be marked. Grade B, C, F and G nuts are marked to identify manufacturer and grade. Markings are in the form of three (for grades B and F) or six (for grades C and G) grade marking symbols. The Locknut Technology identification shown below is used as a substitute for one of the grade marking symbols.



Grade Identification
Grade A - No marks
Grade B - Three marks
Grade C - Six marks

MECHANICAL PROPERTY REQUIREMENTS

GRADE	LOCKNUT SIZE (BOLT DIA.) IN.	PROOF LOAD STRESS PSI	ROCKWELL HARDNESS
A	No. 4 thru 1 1/2	90,000	C28 max
B, F	No. 4 thru 1	120,000	C28 max
	Over 1 thru 1 1/2	105,000	C28 max
C	No. 4 thru 5/8	150,000	C24/32
	Over 5/8 thru 1		C26/34
	Over 1 thru 1 1/2		C26/36
F	1/4 thru 3/4	120,000	C28 max
G	No. 4 thru 1	150,000	C24/32
	3/4	150,000	C26/34



LOCKNUT TECHNOLOGY, INC.
Registered Identification Symbol

Torque-Tension Requirements for Electrodeposited Cadmium Plated and Lubricated Prevailing-Torque Type Nuts

Nut Size and Threads per Inch	Grade B Nuts			Grade C Nuts			Grade F Nuts			Grade G Nuts		
	Clamp Load (1) lb.	Nut Tightening Torque (lb. ft.)		Clamp Load (2) lb.	Nut Tightening Torque (lb. ft.)		Clamp Load (1) lb.	Nut Tightening Torque (lb. ft.)		Clamp Load (2) lb.	Nut Tightening Torque (lb. ft.)	
		Max	Min		Max	Min		Max	Min		Max	Min
Coarse Thread Series												
1/4 - 20	2,000	7.1	5	2,850	10.4	7.1	2,000	7.9	5.4	2,850	12.5	8.3
5/16 - 18	3,350	12.5	9.2	4,700	15.8	10.8	3,350	15	10	4,700	20	12.9
3/8 - 16	4,950	20	14.5	6,950	28	20	4,950	26	16	6,950	32	21
7/16 - 14	6,800	32	23	9,600	43	31	6,800	42	28	9,600	51	34
1/2 - 13	9,050	50	37	12,800	62.5	45	9,050	57	38	12,800	85	55
9/16 - 12	11,600	70	50	16,400	95	70	11,600	85	55	16,400	120	80
5/8 - 11	14,500	95	70	20,300	122.5	90	14,500	112	75	20,300	143	95
3/4 - 10	21,300	165	125	30,100	210	155	21,300	195	135	30,100	240	160
7/8 - 9	29,500	250	185	41,600	312.5	225	—	—	—	—	—	—
1 - 8	38,700	375	275	54,600	462.5	360	—	—	—	—	—	—
Fine Thread Series												
1/4 - 28	2,300	7.5	5.4	3,250	10.4	7.1	2,300	9.6	6.3	3,250	13.3	8.8
5/16 - 24	3,700	13.3	10	5,200	16.7	11.7	3,700	16.7	10.8	5,200	19.2	12.9
3/8 - 24	5,600	22	16	7,900	29	21	5,600	25	17	7,900	33	22
7/16 - 20	7,550	34	24	10,700	43	31	7,550	45	30	10,700	60	40
1/2 - 20	10,200	52.5	37.5	14,400	70	50	10,200	66	44	14,400	89	59
9/16 - 18	13,000	77.5	57.5	18,300	95	70	13,000	94	62	18,300	132	88
5/8 - 18	16,300	97.5	72.5	23,000	125	90	16,300	120	80	23,000	175	115
3/4 - 16	23,800	165	120	33,600	210	155	23,800	192	128	33,600	270	170
7/8 - 14	32,400	270	200	45,800	312.5	225	—	—	—	—	—	—
1 - 14	43,300	400	300	61,100	500	362.5	—	—	—	—	—	—

Torque-Tension Requirements for Electrodeposited Zinc, Clear Chromate, and Lubricated Prevailing-Torque Type Nuts

Nut Size and Threads per Inch	Grade B Nuts			Grade C Nuts			Grade F Nuts			Grade G Nuts		
	Clamp Load (1) lb.	Nut Tightening Torque (lb. ft.)		Clamp Load (2) lb.	Nut Tightening Torque (lb. ft.)		Clamp Load (1) lb.	Nut Tightening Torque (lb. ft.)		Clamp Load (2) lb.	Nut Tightening Torque (lb. ft.)	
		Max	Min		Max	Min		Max	Min		Max	Min
Coarse Thread Series												
1/4 - 20	2,000	10.0	7.0	2,850	14.7	10.0	2,000	11.1	7.6	2,850	17.6	11.7
5/16 - 18	3,350	17.6	12.9	4,700	22.3	15.2	3,350	21.1	14.1	4,700	28.1	18.2
3/8 - 16	4,950	28	20	6,950	39	28	4,950	37	23	6,950	45	30
7/16 - 14	6,800	45	32	9,600	60	44	6,800	59	39	9,600	72	48
1/2 - 13	9,050	70	52	12,800	88	63	9,050	80	53	12,800	120	77
9/16 - 12	11,600	98	70	16,400	134	98	11,600	120	77	16,400	169	113
5/8 - 11	14,500	134	98	20,300	172	127	14,500	158	106	20,300	201	134
3/4 - 10	21,300	232	176	30,100	295	218	21,300	274	190	30,100	338	225
7/8 - 9	29,500	352	260	41,600	440	317	—	—	—	—	—	—
1 - 8	38,700	528	387	54,600	651	506	—	—	—	—	—	—
Fine Thread Series												
1/4 - 28	2,300	10.6	7.6	3,250	14.7	10.0	2,300	10.6	7.6	3,250	18.8	12.3
5/16 - 24	3,700	18.8	14.1	5,200	23.4	16.4	3,700	18.8	14.1	5,200	27.0	18.2
3/8 - 24	5,600	31	23	7,900	41	30	5,600	35	24	7,900	46	31
7/16 - 20	7,550	48	34	10,700	60	44	7,550	63	42	10,700	84	56
1/2 - 20	10,200	74	53	14,400	98	70	10,200	93	62	14,400	125	83
9/16 - 18	13,000	109	81	18,300	134	98	13,000	132	87	18,300	186	124
5/8 - 18	16,300	137	102	23,000	176	127	16,300	169	113	23,000	246	162
3/4 - 16	23,800	232	169	33,600	295	218	23,800	270	180	33,600	380	239
7/8 - 14	32,400	380	281	45,800	440	317	—	—	—	—	—	—
1 - 14	43,300	563	422	61,100	703	510	—	—	—	—	—	—

NOTES:

1. Clamp loads for Grades B and F nuts equal 75% of the proof loads specified for SAE J429 Grade 5 and ASTM A449 bolts.
2. Clamp loads for Grades C and G nuts equal 75% of the proof loads specified for SAE J429 Grade 8 and ASTM A354 Grade BD bolts.



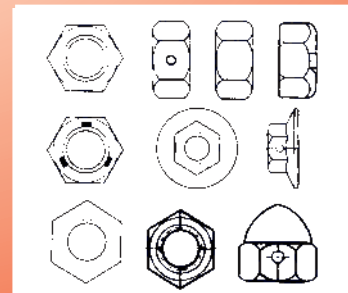
LOCKNUT TECHNOLOGY INC.

Our technical leadership,
coupled with old-fashioned customer
service, allows us to offer our
customers unsurpassed quality,
value and on-time delivery.

AUTOMATION LOCKNUTS • FLANGE NUTS • WELD NUTS

PACKING AVAILABLE:

- Bulk pack in cartons or kegs.
- Small polybags with assorted goods.
- Inner boxes with customers' labels.



351 S. Lombard Road
Addison, Illinois 60101
(630) 628-5330
Fax: (630) 628-5331