

HYBRID ELECTRIC WATER HEATERS

Lochinvar's Heat Pump hybrid electric models are available in 50, 66 and 80 gallon capacities and feature a heat pump operating with environmentally-friendly R134a refrigerant that will absorb ambient heat from the surrounding air reducing electrical consumption by up to 73%.

STANDARD FEATURES

- **ENERGY STAR®** - The Heat Pump water heater meets the ENERGY STAR requirement with up to 3:45 Uniform Energy Factor in hybrid mode and is eligible for most utility rebate programs.
- **Code Compliance** - Complies with the Federal Energy Conservation Standards effective April 16, 2015, in accordance with the Energy Policy and Conservation Act, (EPCA), as amended and meets ENERGY STAR requirements.
- **Electronic Control** - The electronic control features an LED display and four operating modes to match the heating requirements of the environment. The LED display will also read-out current status, set point and fault codes.
- **Immersion Heating Elements** - Zinc-coated copper sheath design for longer life in hard, aggressive water. The elements screw in for easy service and replacement.
- **Glass-Lined Steel Tank** - The durable glass lining is fused to the steel tank at 1600°F to assure lasting protection against rust and corrosion while providing clear, clean hot water. 300 PSI test pressure; 150 PSI working pressure.
- **Non-CFC Foam Insulation** - A uniform coverage of thick closed-cell foam insulation minimizes standby heat loss, maximizes heat retention and delivers a high Energy Factor.
- **Tank Saver Anode** - A large diameter, high capacity anode inhibits corrosion of the tank interior for long, trouble-free service.
- **Heat Trap** - Heat traps are built into the inlet and outlet connections to eliminate heat migration and heat loss in the water piping.
- **Temperature & Pressure Relief Valve** – Factory installed for optimum safety.
- **Brass Drain Valve** – An enhanced ball valve designed for effective drainage and positive shut-off.
- **10-Year Limited Tank & Parts Warranty** – See warranty sheet for details.

*1-year limited tank & parts warranty when installed in a commercial application.

HEAT PUMP ELECTRIC WATER HEATER

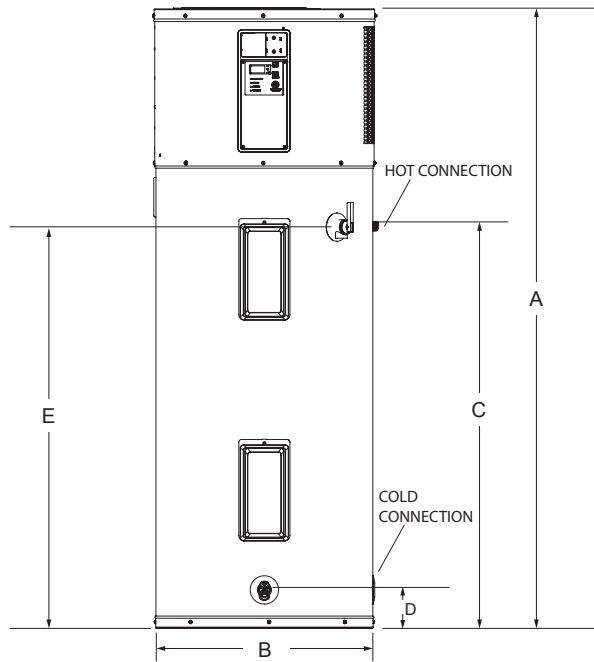


**Meets ASHRAE Energy
Efficiency Standards**



Lochinvar®
HIGH EFFICIENCY BOILERS & WATER HEATERS

DIMENSIONS & SPECIFICATIONS



FOR EASE IN ORDERING
BY MODEL NUMBER

HP A 052 K D

HEAT PUMP VOLTAGE TANK CAPACITY ELEMENT WATTAGE ELEMENT QTY

This heater has a 10 year warranty. It is a heat pump model, has a 50 gallon capacity with a 208/240 volt 4500 watt upper element and 4500 watt lower element.

Model Number	Nominal Gallon Cap	Rated Storage Cap.	Input Watts	Standard Voltage	1st Hr. Rating (Hybrid)	UEF	A	B	C	D	E	Ship. Wt.
HPA052KD	50	46	4500	208V/240V	66	3.45	63"	22"	40-1/2"	3-3/4"	40-1/2"	196
HPA068KD	66	67	4500	208V/240V	79	3.45	61"	27"	38"	4"	38"	289
HPA082KD	80	82	4500	208V/240V	86	3.45	69"	27"	46"	4"	46"	307

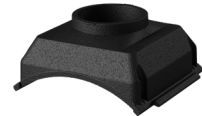
Water connections are 3/4" NPT. Available in 4500 watts only.

Available Air Kits

- Inlet & Outlet Outdoor Air Kit** – The Inlet & Outlet Air Kit adapts the Heat Pump water heater to work with outdoor air. This allows the Heat Pump to be installed in confined spaces and spaces with conditioned air. The kit works with standard 8" flexible duct (field supplied) up to 50 total feet, combined.
- Booster Fan Kit** – By adding the Booster Fan Kit to the Inlet & Outlet Air Kit, the flexible duct can extend to 100 total feet, combined.



Inlet Adapter



Outlet Adapter

Part Number	Description	Shipping	
		Weight	
100234320	Inlet & Outlet Outdoor Air Kit	5	
100131328	Booster Fan Kit	10	



Lochinvar, LLC
300 Maddox Simpson Parkway
Lebanon, Tennessee 37090
P: 615.889.8900 / F: 615.547.1000
Lochinvar.com

For technical information call 800-722-2101. Lochinvar, LLC reserves the right to make product changes or improvements without prior notice.