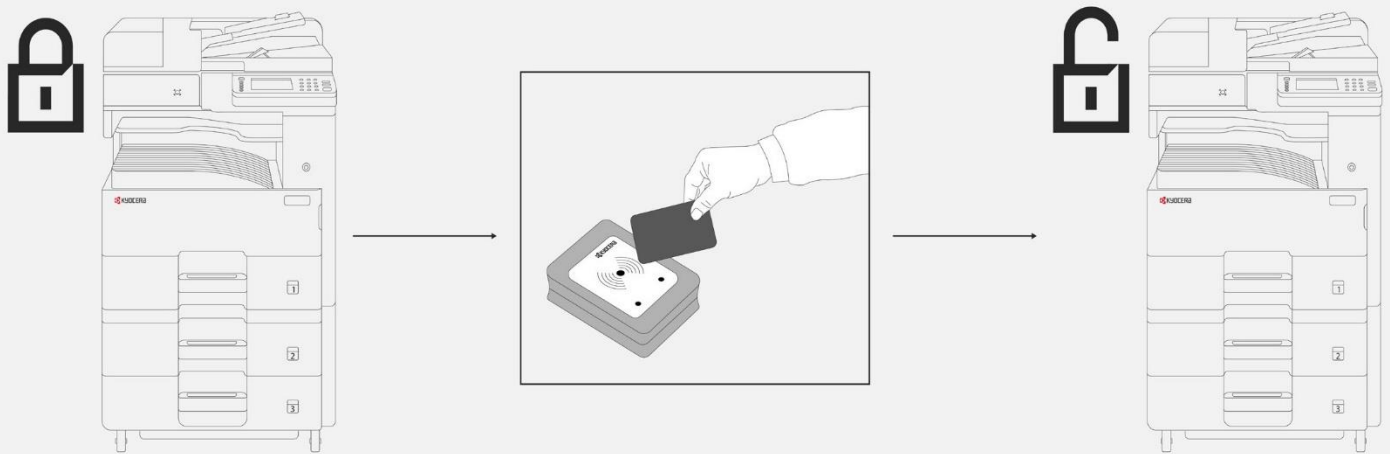


# Secure and Control Your Document Output

Prevent data theft and restrict access to your devices.



**Kyocera USB Card Readers**  
Powered by Elatec



Card authentication is commonly used for building access control and time management, so why not leverage this technology for controlled access to printers and multi-functional devices? Combined with other authentication and access control solutions, you can greatly enhance your workplace efficiency and data security.

### Business Challenges

- Printouts are often left unguarded in printer trays – How can I secure my documents against data theft?
- We have PINs to control access to our devices but they are tedious to enter - **How can I make the login process faster and easier?**
- **How can I make sure that we cut cost, reduce waste and that printing quotas are respected?**
- We are changing our access control system and will be using a diffident ID card technology - **Am I able to use the new ID cards to access Kyocera devices?**

### Your Advantages with Kyocera USB Card Readers

- **Enhance security:** The device only releases the documents when sender logs in at the device with his or her proximity ID card. Reduces waste and improves your document security process.
- **Easy to use:** One quick swipe is enough to unlock the device.
- **Control cost:** Using card readers for authentication, monitoring who prints what and applying print quotas becomes even easier.
- **Gain flexibility:** The latest Kyocera Card Readers all have multi-technology compatibility and can simultaneously read more than sixty card types, they are also easily configurable remotely via Kyocera network device management tools like KNV\* & KDM\*

\*Supported by IRIS2020 and the future device models

### Essential for Data Security

Leaks from unclaimed print jobs and access to the IT network via an unsecured device are 2 of the top reasons for data loss. With Kyocera USB Card Reader authentication, jobs are released only when the person who sends them, logs in at the device. Benefit not only from secure access control, but improved accounting accuracy.

## Features & Specifications

Kyocera USB Card Readers portfolio is designed for seamless integration of Kyocera devices into existing security measures. By swiping the ID card or using the mobile authentication, the user logs onto the device and can access its functions and retrieve print jobs. The Kyocera USB

Card Readers can be used for local authentication together with Kyocera Card Authentication Kits (CAK) and combined with HyPAS application for on premise and cloud solutions. Kyocera USB Card Readers can also be used on third party devices.



**One for all** – use one and the same ID card for all access control points in your office.



**Security** – documents can be accessed, printed and scanned by authorised persons only.



**8 USB card reader types** – worldwide radio approvals, which are continuously expanding and simultaneously reading over sixty card types.



**Flexibility** – configurable remotely via Kyocera network device management tools like KNV\* & KDM\*

\*Supported by IRIS2020 and the future device models.

All Kyocera devices are compatible with Kyocera USB Card Readers. Please ensure the device has the latest firmware installed.

870LS95066	USB Card Reader TWN4 MT2 S		
870LS95067	USB Card Reader TWN4 MT2 P		
870LS95068	USB Card Reader TWN4 MT2 PI		
870LS95069	USB Card Reader TWN4 MT2 LEGIC P		
870LS95070	USB Card Reader TWN4 SLIM BLE S		
870LS95071	USB Card Reader TWN4 SLIM BLE P		
870LS95072	USB Card Reader TWN4 SLIM BLE PI		
870LS95073	USB Card Reader TWN4 SLIM LEGIC BLE P		



Snap-In Holder black

870LS95009

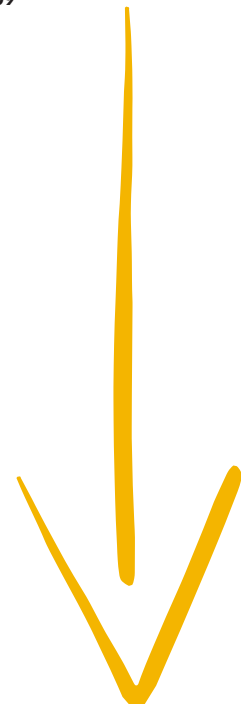


Bracket Holder black

870LS95050

\*NFC and BLE Authentication supported by Kyocera Mobile Print App

<https://www.kyoceradocumentsolutions.eu/en/products/software/kyocera-mobile-print.html> App (KMP)



## Transponder list

Kyocera USB Card readers		Multi-frequency readers (125 kHz + 134.2 kHz + 13.56 MHz + NFC + Bluetooth* Low Energy)				
Options		Standard	Option P	Option PI	LEGIC P	
		870LS95066 USB Card Reader TWN4 MT2 S	870LS95067 USB Card Reader TWN4 MT2 P	870LS95068 USB Card Reader TWN4 MT2 PI	870LS95069 USB Card Reader TWN4 MT2 LEGIC P	
		870LS95070 USB Card Reader TWN4 SLIM BLE S	870LS95071 USB Card Reader TWN4 SLIM BLE P	870LS95072 USB Card Reader TWN4 SLIM BLE PI	870LS95073 USB Card Reader TWN4 SLIM LEGIC BLE P	
13.56 MHz	ISO14443A	LEGIC Advant	✓ 1)	✓ 1)	✓ 1)	✓
		MIFARE Classic, Mini	✓	✓	✓	✓
		MIFARE Classic EV1	✓ 2)	✓ 2)	✓ 2)	✓ 2)
		MIFARE DESFire Light	✓ 8)	✓ 8)	✓ 8)	✓ 8)
		MIFARE DESFire EV1	✓	✓	✓	✓
		MIFARE DESFire EV2/EV3	✓ 13)	✓ 13)	✓ 13)	✓ 13)
		MIFARE Plus S, X	✓	✓	✓	✓
		MIFARE Pro X	✓ 3)	✓ 3)	✓ 3)	✓ 3)
		MIFARE Smart MX	✓ 3)	✓ 3)	✓ 3)	✓ 3)
		MIFARE Ultralight	✓	✓	✓	✓
		MIFARE Ultralight C	✓	✓	✓	✓
		MIFARE Ultralight EV1	✓ 2)	✓ 2)	✓ 2)	✓ 2)
		NTAG2xx	✓	✓	✓	✓
		SLE44R35	✓ 3)	✓ 3)	✓ 3)	✓ 3)
		SLE66Rxx (my-d move)	✓ 3)	✓ 3)	✓ 3)	✓ 3)
	Topaz	✓	✓	✓	✓	
	ISO14443B	HID iCLASS SEOS	✓ 1)	✓ 1)	✓ 10)	✓ 1)
		Calypso	✓ 3)	✓ 3)	✓ 3)	✓ 3)
		Calypso Innovation protocol	✓ 3)	✓ 3)	✓ 3)	✓ 3)
		CEPAS	✓ 3)	✓ 3)	✓ 3)	✓ 3)
		HID iCLASS	✓ 1)	✓ 1)	✓	✓ 1)
		CTS	✓	✓	✓	✓
		Moneo	✓ 3)	✓ 3)	✓ 3)	✓ 3)
		Pico Pass	✓ 4)	✓ 4)	✓ 4)	✓ 1)
		SRI4K, SRIX4K	✓	✓	✓	✓
		SRI512, SRT512	✓	✓	✓	✓
	ISO1809 ECMA 340	NFC Forum Tag Type 1-5	Type 1-5	Type 1-5	Type 1-5	Type 2-5
		NFC Peer-to-Peer	✓	✓	✓	✓
		Sony FeliCa	✓ 9)	✓ 9)	✓ 9)	✓ 9)
	ISO15693	EM4x33	✓ 3)	✓ 3)	✓ 3)	✓ 3)
		EM4x35	✓ 3)	✓ 3)	✓ 3)	✓ 3)
		HID iCLASS	✓ 1)	✓ 1)	✓	✓ 1)
		HID iCLASS SE/SR/Elite	✓ 1)	✓ 1)	✓	✓ 1)
		ICODE SLI	✓	✓	✓	✓
		LEGIC Advant	✓ 1)	✓ 1)	✓ 1)	✓
M24LR16/64		✓	✓	✓	✓	
MB89R118/119		MT2, MT3, Nano, Slim, Palon M / Panel / Wall / Square M	MT2, MT3, Nano, Slim, Palon M / Panel / Wall / Square M	MT2, MT3, Nano, Slim, Palon M / Panel / Wall / Square M	MT2, MT3, Nano, Slim, Palon M / Panel / Wall / Square M	
SRF55Vxx (my-d vicinity)		✓ 3)	✓ 3)	✓ 3)	✓ 3)	
Tag-it		✓	✓	✓	✓	
Pico Pass		✓ 4)	✓ 4)	✓ 4)	✓ 1)	
125 kHz		LEGIC Prime	✓	✓	✓	✓
	AWID	✓	✓	✓	✓	
	Cardax	✓	✓	✓	✓	
	CASI-RUSCO	✓	✓	✓	✓	
	Cotag	✓	✓	✓	✓	
	Deister	✓ 6)	✓ 6)	✓ 6)	✓ 6)	
	EM4100, 4102, 4200 <sup>9)</sup>	✓	✓	✓	✓	
	EM4050, 4150, 4450, 4550	✓	✓	✓	✓	
	EM4305	✓ 14)	✓ 14)	✓ 14)	✓ 14)	
	FDX-B, EM4105	✓ 15)	✓ 15)	✓ 15)	✓ 15)	
	UltraProx	✓ 15)	✓ 15)	✓ 15)	✓ 15)	
	G-Prox	✓ 8)	✓ 8)	✓ 8)	✓ 8)	
	HID DuoProx II (1336)	✓	✓	✓	✓	
	HID ISO Prox II (1386)	✓	✓	✓	✓	
	HID Micro Prox (1391)	✓	✓	✓	✓	
	HID ProxKey III (1346)	✓	✓	✓	✓	
	HID Prox	✓	✓	✓	✓	
	HID Prox II (1326)	✓	✓	✓	✓	
	HITAG 1, 2, S	✓ 9)	✓ 9)	✓ 9)	✓ 9)	
	ICT	✓ 8)	✓ 8)	✓ 8)	✓ 8)	
	IDTECK	✓	✓	✓	✓	
	Indala	✓	✓	✓	✓	
	ioProx	✓	✓	✓	✓	
	ISONAS	✓	✓	✓	✓	
	Keri	✓	✓	✓	✓	
	Miro	✓	✓	✓	✓	
	Nedap	✓ 6)	✓ 6)	✓ 6)	✓ 6)	
	Nexwatch	✓	✓	✓	✓	
	PAC	✓ 8)	✓ 8)	✓ 8)	✓ 8)	
	Pyramid	✓	✓	✓	✓	
	Q5	✓	✓	✓	✓	
	T5557, T5567, T5577	✓	✓	✓	✓	
	TIRIS/HDX	✓ 15)	✓ 15)	✓ 15)	✓ 15)	
	TITAN (EM4050)	✓	✓	✓	✓	
	UNIQUE	✓	✓	✓	✓	
ZODIAC	✓	✓	✓	✓		

1)UID only 2)r/w enhanced security features on request 3)r/w in direct chip command mode 4)UID only, read/write on request 5)UID + r/w public area 6)Hash value only 7)Only emulation of 4100, 4102 8)On request 9)Without encryption 10)UID + PAC (CSN & Facility Code), r/w on request 11)In preparation 12) 125/134.2kHz technology requires a Russian local test and import license from the ministry of Trade and Industry (MINPROMTORC). This license has to be in place before ELATEC can accept any order to be shipped to Russia 13)EV2/EV3 supported as part of the EV1 downward compatibility 14)From FW V4.05 15)134.2 kHz only

Kyocera Document Solutions has championed innovative technology since 1934. We enable our customers to turn information into knowledge, excel at learning and surpass others. With professional expertise and a culture of empathetic partnership, we help organisations put knowledge to work to drive change.

KYOCERA Document Solutions (U.K.) Limited  
Eldon Court  
75-77 London Road  
Reading  
Berkshire RG1 5BS

Tel: 0333 015 1855  
email: [info@duk.kyocera.com](mailto:info@duk.kyocera.com)



[kyoceradocumentsolutions.co.uk](http://kyoceradocumentsolutions.co.uk)