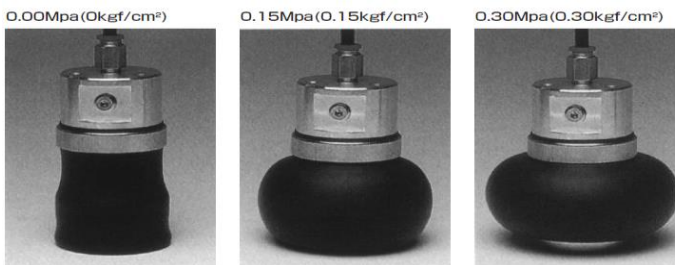
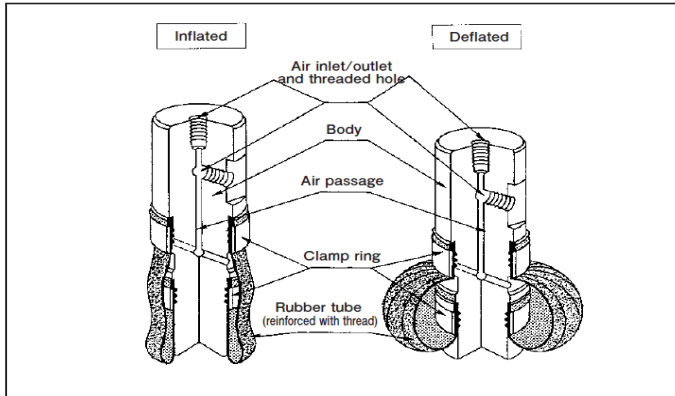


AIR PICKER

Picking Inside an Object

A cylindrical rubber tube inflates in a doughnut shape when air pressure is put in, allowing the AIR PICKER to hold on to the inner wall of the object with a wide contact area. Thus, it holds the work piece gently and securely without causing damage.



●R type

The rubber tube is reinforced with nylon threads woven into it radially. R-type is suitable for holding and handling the work having small- to medium-sized diameter, or work having medium weight.

●T-type

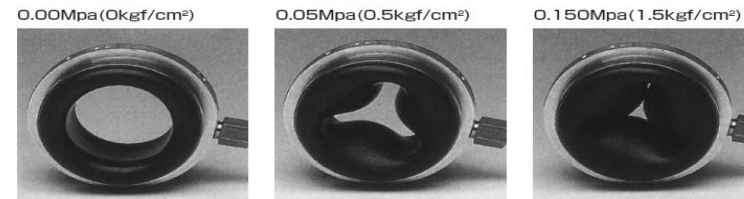
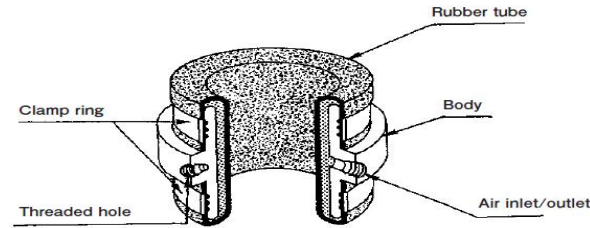
The rubber tube is reinforced with nylon threads woven into it on the bias. T-type is suitable for holding and handling the work having large-sized diameter, or work having heavy weight.

Note: Do not inflate AIR PICKER unrestricted.

AIR GRIPPER

Gripping Outside an Object

A doughnut-shaped rubber tube inflates inwardly when pressurized, allowing the AIR GRIPPER to hold the exterior of the object with a wide contact area. Thus, it holds the work gently and securely without causing damage.

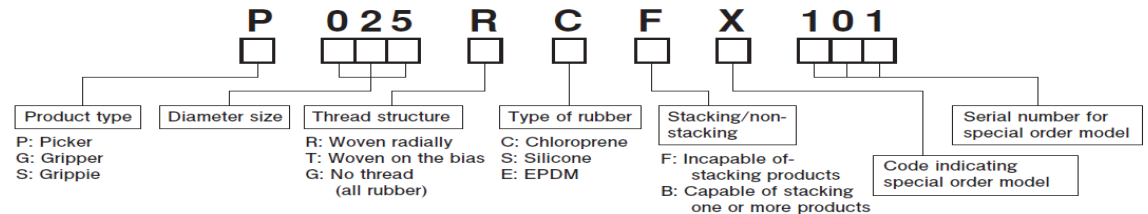


●The AIR GRIPPER softly holds the exterior of the work piece. It is suitable for holding and handling a work piece having no opening or having too small an opening to allow an AIR PICKER to hold it from within.

The standard AIR GRIPPER models have all rubber construction that uses no reinforcement thread. R-type models, which are reinforced with nylon thread, are also available on a special order basis.

Note: Do not inflate AIR GRIPPER unrestricted.

Model Number Configuration

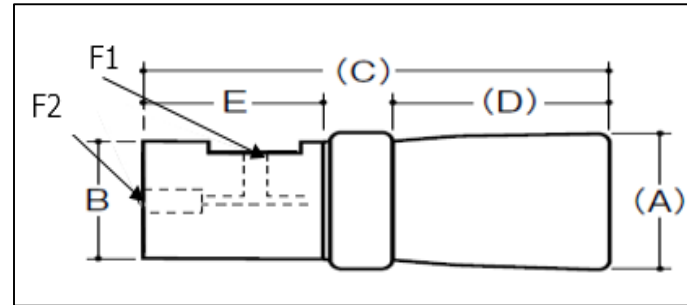
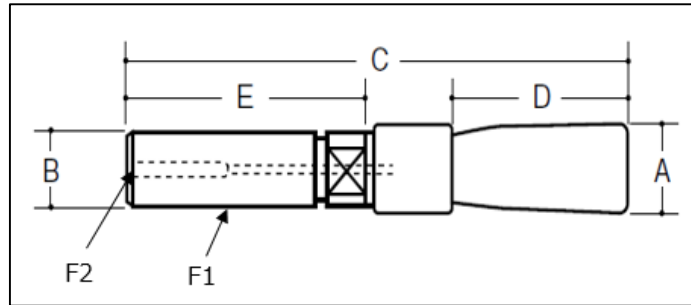


Specifications of Standard Picker

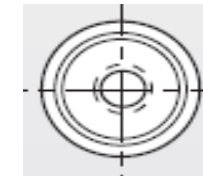


•P006RCF~P009RCF

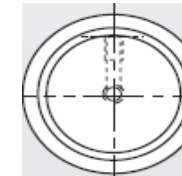
•P010RCF~P055TCF



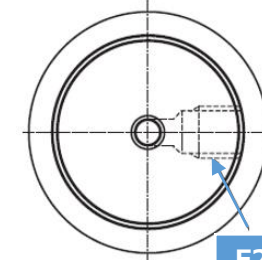
P006RCF~
P009RCF



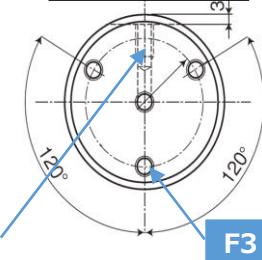
P010RCF~
P025RCF



P035TCF



P045TCF~
P055TCF



- Dimensions
- Name of each portion
- A: Rubber tube outside diameter
- B: Body outside diameter
- C: Total length
- D: Rubber tube length
- F: Threaded hole diameter

*The dimensions in parentheses are for reference purpose.

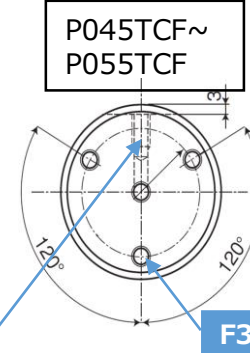
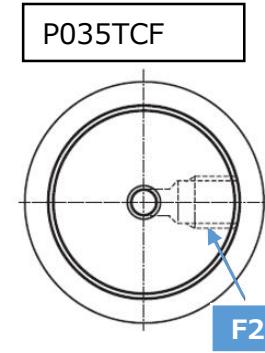
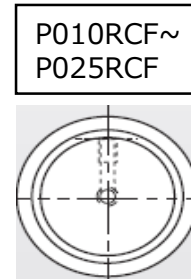
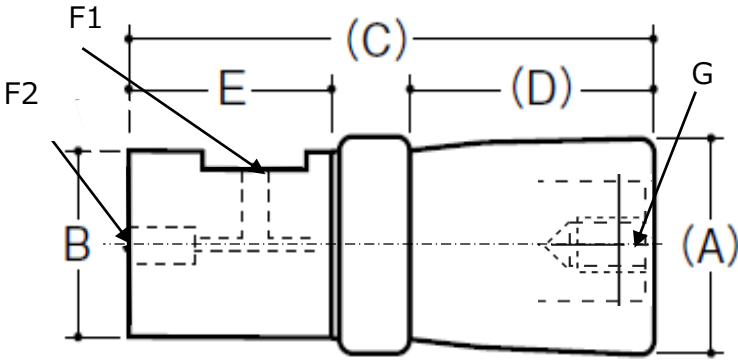
Model No.		Applicable work inside diameter (mm)	Recommended handing load (g)*1	Max operational air pressure (Mpa)	Rubber tube construction	Body material	Dimensions(mm)							Picker weight (g)				
							(A)	B	(C)	(D)	E	F			G			
Bridgestone	Firestone										F1	F2	F3	guide cone hole				
P006RCF	WP1M580001	Φ8.5~10	300	0.4	Thread woven radially (Chloroprene)	Stainless steel	Φ8	Φ6	51	17.5	24.5	M6	M3	N/A	N/A	8		
P007RCF	WP1M580002	Φ10~12	300				Φ9.5	Φ6	51	17.5	24.5	M6	M3	N/A	N/A	N/A	12	
P009RCF	WP1M580003	Φ12~17	1,200				Φ11	Φ8	51	17.5	24.5	M8	M5	N/A	N/A	N/A	17	
P010RCF		Φ16~21	2,000	0.5		Thread woven radially (Chloroprene)	Free cutting steel (plated)	Φ14	Φ10	52	21	22	M5	M5	N/A	N/A	28	
P014RCF		Φ21~27	2,500					Φ19	Φ14	56	22	22	M5	M5	N/A	N/A	N/A	60
P017RCF		Φ24~32	3,000					Φ22	Φ17	56	22	22	M5	M5	N/A	N/A	N/A	85
P019RCF		Φ28~36	3,500					Φ25	Φ19	55	22	22	M5	M5	N/A	N/A	N/A	105
P022RCF		Φ30~44	6,000					Φ27	Φ22	64	28	25	M5	M5	N/A	N/A	N/A	160
P025RCF		Φ32~52	9,000					Φ29	Φ25	75	34	30	M5	M5	N/A	N/A	N/A	245
P035TCF		Φ45~65	12,000	0.5	Thread woven on the bias (Chloroprene)		Aluminum (Alumite)	Φ43.5	Φ34	71	42	17.5	RC(PT)1/8	M6	N/A	N/A	180	
P045TCF		Φ58~85	20,000					Φ53.5	Φ44	90	52	26	M6	M6	M6	N/A	N/A	370
P055TCF		Φ70~105	25,000					Φ65.5	Φ54	101	53	35	M6	M6	M6	N/A	N/A	610

*1: Recommended handing load for the maximum work inside diameter (load capability increases as the work inside diameter decreases)

Specifications of P***RCFX910 & P***RCFX911



•P010RCFX***~P055TCFX***



- Dimensions
- Name of each portion
- A: Rubber tube outside diameter
- B: Body outside diameter
- C: Total length
- D: Rubber tube length
- F: Threaded hole diameter

*The dimensions in parentheses are for reference purpose.

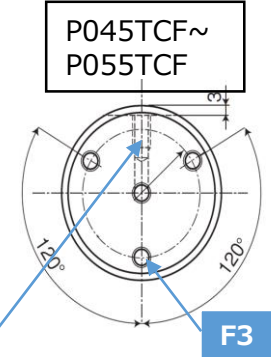
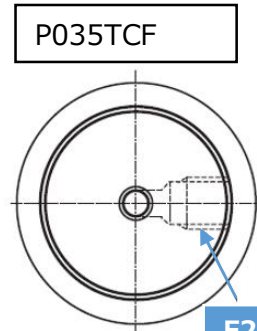
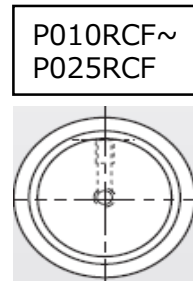
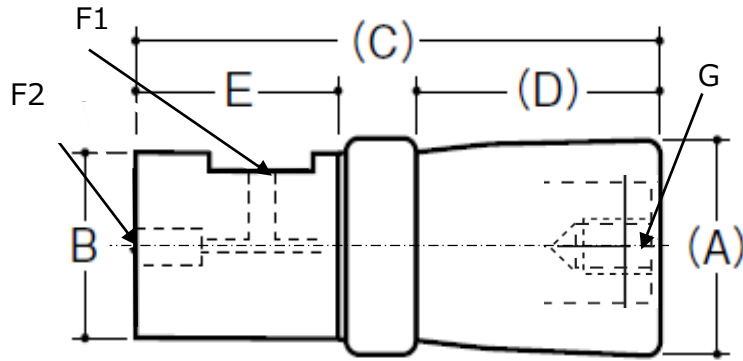
Model No.		Applicable work inside diameter	Recommended handing load	Max operational air pressure	Rubber tube construction	Body material	Dimensions(mm)							Picker weight		
							(A)	B	(C)	(D)	E	F			G	
Bridgestone	Firestone	(mm)	(g)*1	(Mpa)							F1	F2	F3	guide cone hole	(g)	
P010RCFX911	WP1M580004	Φ16~21	2,000	0.4	Thread woven radially (Chloroprene)	Free cutting steel (plated)	Φ14	Φ10	52	21	22	M5	M5	N/A	8-32UNC	28
P014RCFX911	WP1M580005	Φ21~27	2,500				Φ19	Φ14	56	22	22	M5	M5	N/A	10-24UNC	60
P017RCFX911	WP1M580006	Φ24~32	3,000				Φ22	Φ17	56	22	22	M5	M5	N/A	10-24UNC	85
P019RCFX911	WP1M580007	Φ28~36	3,500				Φ25	Φ19	55	22	22	M5	M5	N/A	10-24UNC	105
P022RCFX911	WP1M580008	Φ30~44	6,000				Φ27	Φ22	64	28	25	M5	M5	N/A	10-24UNC	160
P025RCFX911	WP1M580009	Φ32~52	9,000				Φ29	Φ25	75	34	30	M5	M5	N/A	1/4-20 UNC	245
P035TCFX911	WP1M580011	Φ45~65	12,000		Thread woven on the bias (Chloroprene)	Aluminum (Alumite)	Φ43.5	Φ34	71	42	17.5	RC(PT)1/8	M6	N/A	1/4-20 UNC	180
P045TCFX911	WP1M580012	Φ58~85	20,000				Φ53.5	Φ44	90	52	26	M6	M6	M6	1/4-20 UNC	370
P055TCFX911	WP1M580013	Φ70~105	25,000				Φ65.5	Φ54	101	53	35	M6	M6	M6	1/4-20 UNC	610
P010RCFX910	WP13582000	Φ16~21	2,000	0.4	Thread woven radially (Chloroprene)	Free cutting steel (plated)	Φ14	Φ10	52	21	22	10-32UNF	10-32UNF	N/A	8-32UNC	28
P014RCFX910	WP13582001	Φ21~27	2,500				Φ19	Φ14	56	22	22	10-32UNF	10-32UNF	N/A	10-24UNC	60
P017RCFX910	WP13582002	Φ24~32	3,000				Φ22	Φ17	56	22	22	1/8-27 NPT	1/8-27 NPT	N/A	10-24UNC	85
P019RCFX910	WP13582003	Φ28~36	3,500				Φ25	Φ19	55	22	22	1/8-27 NPT	1/8-27 NPT	N/A	10-24UNC	105
P022RCFX910	WP13582004	Φ30~44	6,000				Φ27	Φ22	64	28	25	1/8-27 NPT	1/8-27 NPT	N/A	10-24UNC	160
P025RCFX910	WP13582005	Φ32~52	9,000				Φ29	Φ25	75	34	30	1/8-27 NPT	1/8-27 NPT	N/A	1/4-20 UNC	245
P035TCFX910	WP13582006	Φ45~65	12,000		Thread woven on the bias (Chloroprene)	Aluminum (Alumite)	Φ43.5	Φ34	71	42	17.5	1/8-27 NPT	1/8-27 NPT	N/A	1/4-20 UNC	180
P045TCFX910	WP13582007	Φ58~85	20,000				Φ53.5	Φ44	90	52	26	1/8-27 NPT	1/8-27 NPT	10-24 UNC	1/4-20 UNC	370
P055TCFX910	WP13582008	Φ70~105	25,000				Φ65.5	Φ54	101	53	35	1/8-27 NPT	1/8-27 NPT	10-24 UNC	1/4-20 UNC	610

*1:Recommended handing load for the maximum work inside diameter (load capability increases as the work inside diameter decreases)

Specifications of Silicone Picker



•P014RSFX***~P035RSFX**



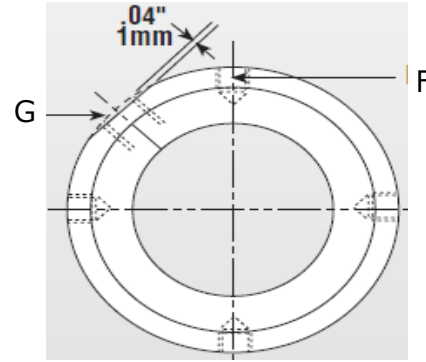
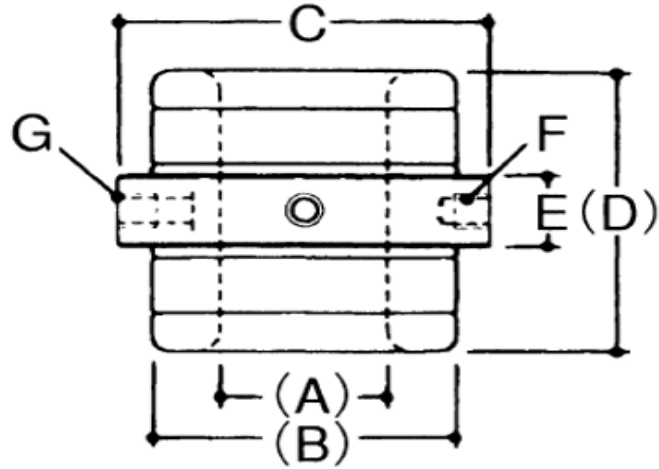
●Dimensions
 Name of each portion
 A: Rubber tube outside diameter
 B: Body outside diameter
 C: Total length
 D: Rubber tube length
 E: Threaded hole diameter

*The dimensions in parentheses are for reference purpose.

Model No.		Applicable work inside diameter	Recommended handing load	Max operational air pressure	Rubber tube construction	Body material	Dimensions(mm)							Picker weight		
							(A)	B	(C)	(D)	E	F			G	
Bridgestone	Firestone	(mm)	(g)*1	(Mpa)							F1	F2	F3	guide cone hole	(g)	
P014RSFX910	WP13582009	Φ22~25	600	0.22	Silicone rubber	Free cutting steel (plated)	Φ20	Φ14	56	22	22	10-32UNF	10-32UNF	N/A	10-24UNC	60
P014RSFX911	WP1M580024	Φ22~25	600	0.22			Φ20	Φ14	56	22	22	M5	M5	N/A	10-24UNC	60
P017RSFX911	WP1M580025	Φ25~30	700	0.22			Φ23	Φ17	56	22	22	M5	M5	N/A	10-24UNC	85
P019RSFX911	WP1M580018	Φ30~35	1,000	0.22			Φ27	Φ19	55	22	22	M5	M5	N/A	10-24UNC	110
P022RSFX911	WP1M580026	Φ32~40	1,300	0.22			Φ29	Φ22	64	28	25	M5	M5	N/A	10-24UNC	165
P025RSFX911	WP1M580019	Φ34~42	1,600	0.22		Aluminum	Φ31	Φ25	75	34	30	M5	M5	N/A	1/4-20 UNC	110
P035RSFX911	WP1M580028	Φ46~58	2,500	0.18		(Alumite)	Φ42	Φ34	71	42	17.5	PT1/8	M6	N/A	1/4-20 UNC	180

*1: Recommended handing load for the maximum work inside diameter (load capability increases as the work inside diameter decreases)

Specifications of Gripper



- Dimensions
- Name of each portion
- A: Rubber tube inside diameter
- B: Rubber tube outside diameter
- C: Maximum diameter (including flange)
- D: Height (including flange)
- E: Flange height
- F: Diameter of threaded hole for mounting
- G: Air inlet/outlet diameter

The dimensions in parentheses are for reference purpose.

Model No.		Type	Applicable work outside diameter (mm)	Recommended handing load (g)*1	Max operational air pressure (Mpa)	Rubber tube construction	Body material	Dimensions(mm)							Picker weight (g)
Bridgestone	Firestone							(A)	B	(C)	(D)	E	F	G	
G020GCF	WP1M585001	Standard Gripper	φ5~15	1,400	0.15	All rubber (chloroprene)	Aluminum (Alumite)	φ19	φ33	φ40	36	10	M5	M5	60
G030GCF	WP1M585002		φ10~25	3,800				φ27	φ48	φ60	48	13	M6	M6	145
G040GCF	WP1M585003		φ15~35	6,000				φ37	φ58	φ70	52	14	M6	M6	210
G050GCF	WP1M585004		φ20~45	9,000				φ48	φ69	φ80	56	15	M8	Rc1/8	285
G020GSFX100	WP1M585005	Silicone Gripper	φ5~15	400	0.1	Silicone rubber	Aluminum (Alumite)	φ19	φ33	φ40	36	10	M5	M5	60
G030GSFX100	WP1M585006		φ10~25	1,200				φ27	φ48	φ60	48	13	M6	M6	130
G040GSFX100	WP1M585007		φ15~35	1,800				φ37	φ58	φ70	52	14	M6	M6	210
G050GSFX100	WP1M585008		φ20~45	2,600				φ48	φ69	φ80	56	15	M8	Rc1/8	260
G020GCFX200	WP13587000	Specail Gripper	φ5~15	1,400	0.15	All rubber (chloroprene)	Aluminum (Alumite)	φ19	φ33	φ40	36	10	10-24 UNC	10-32 UNF	60
G030GCFX200	WP13587001		φ10~25	3,800				φ27	φ48	φ60	48	13	10-24 UNC	10-32 UNF	145
G040GCFX200	WP13587002		φ15~35	6,000				φ37	φ58	φ70	52	14	10-24 UNC	1/8-27 NPT	210
G050GCFX200	WP13587003		φ20~45	9,000				φ48	φ69	φ80	56	15	10-24 UNC	1/8-27 NPT	285

*1: Recommended handing load for the minimum work outside diameter (load capability increases as the work outside diameter decreases)