

# King Louie *america*





**UNION-MADE APPAREL**

**2014**



ALL KING LOUIE PRODUCTS ARE PROUDLY UNION MADE IN USA

## PRODUCT LOCATOR

03	SHIRTS	
17	ACTIVEWEAR	
20	OUTERWEAR	

**King Louie**  
*america*

A complete product index by style name and number is listed on the inside back cover.

*King Louie America is proud to begin its 77th year. We owe our success to you, our loyal customers. For 2014, we are introducing 12 new styles of jackets, shirts and ladies wear that only increases our great selection of union made in the USA apparel.*

*We sincerely thank you for your support!*



Michael Lerner



Visit our website at: [www.kinglouie.com](http://www.kinglouie.com)

*NEW style*



J4017



J4005

J4010

J4015

J4016

**J4000** | CREST

**FASHION SHIRT WITH SPANDEX**

94% polyester/ 4% Spandex waffle pattern shirt with a solid collar. 3-button placket, hem sleeve and bottom.

Union Made in USA. Sizes: S-5XL

**gunmetal** J4005, **cobalt** J4010, **stone** J4015, **moss** J4016, **coral** J4017

*NEW style*



W4010



W4005

W4017

W4015

W4016

**W4000** | LADY CREST

**LADIES' FASHION SHIRT WITH SPANDEX**

94% polyester/ 4% Spandex waffle pattern shirt with a solid collar. 2-button placket, hem sleeve and bottom.

Union Made in USA. Sizes: S-3XL

**gunmetal** W4005, **cobalt** W4010, **stone** W4015, **moss** W4016, **coral** W4017



**J4020** | STILLWELL

**MOISTURE MANAGEMENT DROP-NEEDLE INTERLOCK SHIRT**

100% Polyester drop-needle vertical stripe interlock polo.  
 Solid collar and sleeve welt. 3-button placket with a set-in sleeve.  
 Union Made in the USA. Sizes: S-5XL  
**navy** J4021, **black** J4025, **cobalt blue** J4030, **stone** J4035,  
**oxford** J4038

*NEW style*

**W4020** | LADY STILLWELL

**LADIES' MOISTURE MANAGEMENT DROP-NEEDLE INTERLOCK SHIRT**

100% Polyester drop-needle vertical stripe interlock polo.  
 2-button placket with a solid-collar, set-in sleeve with a hemmed cuff.  
 Union Made in the USA. Sizes: S-3XL  
**navy** W4021, **black** W4025, **cobalt blue** W4030, **stone** W4035,  
**oxford** W4038

*NEW style*







*NEW style*

J3501



**J3500** | NAPA

**FASHION MOISTURE MANAGEMENT SHIRT**

100% polyester moisture management baby swiss pique shirt. 2-button placket with stripped collars and welts using a 3-color trim pattern. Union Made in the USA. Sizes: S-5XL  
**Navy body with Red Placket w Navy, White, Red Stripes J3501,**  
**Red body with Black Placket w Red, White, Black Stripes J3502,**  
**Black body with Grey Placket w Black, White, Grey Stripes J3505,**  
**Dark Green body with Navy Placket w Dark Green, White, Navy Stripes J3509,**  
**White body with Navy Placket w White, Navy, Red Stripes J3511**



*NEW style*

W3511



**W3500** | LADY NAPA

**LADIES' FASHION MOISTURE MANAGEMENT SHIRT**

Ladies 100% polyester moisture management baby-swiss pique shirt. 2-button placket with stripped collars and welts using a 3-color trim pattern. Union Made in the USA. Sizes: S-3XL  
**Navy body with Red Placket w Navy, White, Red Stripes W3501,**  
**Red body with Black Placket w Red, White, Black Stripes W3502,**  
**Black body with Grey Placket w Black, White, Grey Stripes W3505,**  
**Dark Green body with Navy Placket w Dark Green, White, Navy Stripes W3509,**  
**White body with Navy Placket w White, Navy, Red Stripes W3511**



**J9300** | BREEZE

**MOISTURE MANAGEMENT SHIRT**

100% polyester Moisture Management textured golf shirt with self fabric collar. Raglan sleeve and 2 button narrow fashion placket. Union Made in USA. Sizes: S-5XL  
**navy** J9301, **red** J9302, **black** J9305, **dark green** J9309

**W9300** | LADY BREEZE

**LADIES' MOISTURE MANAGEMENT SHIRT**

100% polyester Moisture Management textured golf shirt with self fabric collar. Raglan sleeve and 2 button narrow fashion placket. Union Made in USA. Sizes: S-3XL  
**navy** W9301, **red** W9302, **black** W9305, **dark green** W9309



**J0000** | JAZZ

**MOISTURE MANAGEMENT SHIRT**

100% polyester Moisture Management shirt with a flat back mesh pattern. "Roped" striped collar, solid welts and a matching 3-button placket. Union made in USA. Sizes: S-5XL  
**navy/khaki rope** J0001, **red/white rope** J0002, **black/khaki rope** J0005, **white/black rope** J0011

**J0000P** | JAZZ W/POCKET

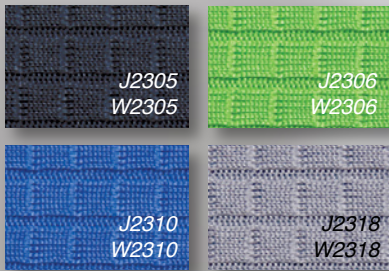
**navy/khaki rope** J0001P, **red/white rope** J0002P, **black/khaki rope** J0005P, **white/black rope** J0011P

**W0000** | LADY JAZZ

**LADIES' MOISTURE MANAGEMENT SHIRT**

100% polyester Moisture Management shirt with a flat back mesh pattern. "Roped" striped collar, hemmed sleeve matching 2-button placket. Union made in USA. Sizes: S-3XL  
**navy/khaki rope** W0001, **red/white rope** W0002, **black/khaki rope** W0005, **white/black rope** W0011





**J2300** | WESTON

**FASHION MOISTURE MANAGEMENT SHIRT**

100% Polyester Fashion Moisture Management box pattern textured shirt with a 3-button placket. Solid knit collar and sleeve welts.

Union Made in the USA. Sizes: S-5XL

**black** J2305, **green** J2306, **blue** J2310, **grey** J2318

**W2300** | LADY WESTON

**LADIES' PERFORMANCE SPORT SHIRT**

Fashion 100% Polyester Moisture Management box pattern textured shirt with a 2-button placket. Solid knit collar with hemmed sleeves.

Union Made in the USA. Sizes: S-3XL

**black** W2305, **green** W2306, **blue** W2310, **grey** W2318

**J2320** | JOPLIN

**MOISTURE MANAGEMENT SHIRT**

100% Polyester Moisture Management baby swiss pique shirt with solid knit collar and 3-button placket. Hemmed raglan sleeves with tone-on-tone fashion textured fabric inserts.

Union Made in the USA. Sizes: S-5XL

**navy** J2321, **black** J2325, **dark green** J2329

**W2320** | LADY JOPLIN

**LADIES' MOISTURE MANAGEMENT SHIRT**

100% Polyester Moisture Management baby swiss pique shirt with solid knit collar and 2-button placket. Hemmed raglan sleeves with tone-on-tone fashion textured fabric inserts.

Union Made in the USA. Size: S-3XL

**navy** W2321, **black** W2325, **dark green** W2329



**J3300** | EDGE

**FASHION MOISTURE MANAGEMENT SHIRT**

100% Polyester Swiss Fashion Moisture Management shirt with contrasting armhole piping and a 3-button placket. Tipped collar, matching piping with hemmed sleeve. Union Made in the USA.

Sizes: S-5XL

navy J3301, red J3302, black J3305, white J3311

**W3300** | LADY EDGE

**LADIES' FASHION MOISTURE MANAGEMENT SHIRT**

100% Polyester Swiss Fashion Moisture Management shirt with contrasting armhole piping and a 2-button placket. Tipped collar, matching piping with hemmed sleeve. Union Made in the USA.

Sizes: S-3XL

navy W3301, red W3302, black W3305, white W3311



**J9320** | PALMER

**MOISTURE MANAGEMENT SHIRT**

100% polyester Moisture Management box jersey pique golf shirt with a Jacquard fashion collar and hemmed sleeves. 2 button narrow fashion placket. Union Made in USA. Sizes: S-5XL

navy J9321, black J9325, orange J9327, green J9339, blue J9330

**W9320** | LADY PALMER

**LADIES' MOISTURE MANAGEMENT SHIRT**

100% polyester Moisture Management box jersey pique golf shirt with a Jacquard fashion collar and hem sleeves. 2 button narrow fashion placket. Union Made in USA. Sizes: S-3XL

navy W9321, black W9325, orange W9327, green W9339, blue W9330







**J1120** | PERFORMER

**MOISTURE MANAGEMENT SHIRT**

Moisture Management baby swiss pique polo. Solid color shirt with solid knit collar, sleeve welts and three button placket. Union Made in USA. Sizes: S-5XL  
**navy** J1121, **red** J1122, **black** J1125, **sunburst** J1124-*new*, **green** J1126-*new*, **orange** J1127, **dark green** J1129, **blue** J1130, **white** J1131, **violet** J1132, **grey** J1138, **oxford heather** J1139

**W1120** | LADY PERFORMER

**LADIES' MOISTURE MANAGEMENT SHIRT**

Moisture Management baby swiss pique polo shirt. Solid color shirt with hemmed sleeves, and 2-button placket. Union Made in USA. Sizes: S-3XL  
**navy** W1121, **red** W1122, **black** W1125, **sunburst** W1124-*new*, **green** W1126-*new*, **orange** W1127, **dark green** W1129, **blue** W1130, **white** W1131, **violet** W1132, **grey** W1138, **oxford heather** W1139

*NEW style*



**J4060** | SHOAL

**QUARTER-ZIP FASHION LONG SLEEVE SHIRT**

Quarter-zip, long sleeve 100% poly jersey with an open bottom.

Zip-thru contrasting inside collar with knit cuffs.

Union Made in USA. Sizes: S-5XL

**black w/stone J4065, stone w/black J4075**



Ladies' Companion Style  
L4060 Lady Shoal - page 20





**J4500** | NATIONAL

**COTTON SOLID SPORT SHIRT**

100% cotton pique knit. Solid color with knit collar and welts, three rim pearl button placket. Union Made in USA. Sizes: S-5XL

**navy** J4501, **red** J4502, **royal** J4503, **black** J4505, **dark green** J4509, **white** J4511, **purple** J4512, **gold** J4514, **midnight blue** J4521, **oxford** J4538



**W4500** | LADY NATIONAL

**LADIES' SOLID 100% COTTON PIQUE**

100% cotton ladies shirt. Solid color knit collar and welts with 2 rim pearl buttons. Union Made in USA. Sizes: S-3XL

**navy** W4501, **red** W4502, **black** W4505, **dark green** W4509, **white** W4511, **purple** W4512, **gold** W4514



**J4500L** | NATIONAL LONG SLEEVE

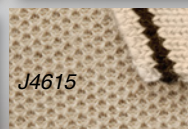
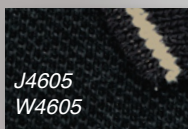
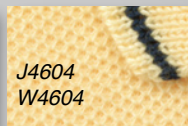
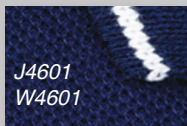
**navy** J4501L, **black** J4505L



**J4500P** | NATIONAL W/POCKET

**navy** J4501P, **black** J4505P, **dark green** J4509P





**J4600** | TRADITION

**COTTON SPORT SHIRT**

100% cotton pique knit. Matching knit collar and welts with narrow contrasting accent stripe, three rim pearl buttons.

Union Made in USA. Sizes: S-5XL

**navy-white stripe** J4601, **yellow-navy stripe** J4604, **black-khaki stripe** J4605, **white-navy stripe** J4611, **khaki-black** J4615,

**J4600P** | TRADITION W/POCKET

**navy-white stripe** J4601P, **black-khaki stripe** J4605P, **white-navy stripe** J4611P

**W4600** | LADY TRADITION

**LADIES' COTTON SPORT SHIRT**

100% cotton pique knit. Ladies' cut, 2-button placket, matching knit collar and welts with narrow contrasting accent stripe. Union Made in USA. Sizes: S-3XL

**navy-white stripe** W4601, **yellow-navy stripe** W4604, **black-khaki stripe** W4605



**USA** | FREEDOM

**PATRIOTIC SPORT SHIRT**

100% cotton pique. Solid body with stars-and-stripes knit collar and star knit welt on sleeve. 3-button placket with dyed-to-match buttons. Union Made in USA. Sizes: S-5XL

**navy** USA102, **white** USA003

**WUSA** | LADY FREEDOM

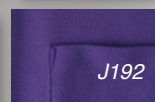
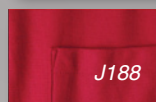
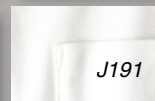
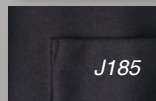
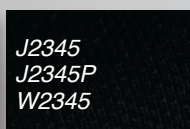
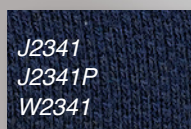
**LADIES' PATRIOTIC SPORT SHIRT**

100% cotton pique. Ladies' fit, solid body with stars-and-stripes knit collar and solid knit welt on shorter set-in sleeve. 3-button placket with dyed-to-match buttons, hemmed bottom.

Union Made in USA. Sizes: S-3XL

**white** WUSA03





**J2340** | GIBBS

**BLENDED SPORT SHIRT**

Cotton Rich Polyester blend shirt with a 2-button placket and hemmed sleeves. Union Made in the USA. Sizes: S-5XL  
**navy** J2341, **black** J2345, **white** J2351

**J2340P** | GIBBS W/POCKET

**navy** J2341P, **black** J2345P, **white** J2351P

**W2340** | LADY GIBBS

**LADIES' BLENDED SPORT SHIRT**

Cotton Rich Polyester blend ladies shirt with a 2-button placket and hemmed sleeves. Union Made in the USA. Sizes: S-3XL  
**navy** W2341, **black** W2345, **white** W2351

**J180** | SKYLINE

**POCKETED PIQUE SPORT SHIRT**

Blended 60% cotton/ 40% polyester double pique. Matching knit collar, hemmed sleeve, 2-button placket with matching buttons, left chest pocket, hemmed bottom. Union Made in USA. Sizes: S-3XL  
 Big Sizes: 4XL and 5XL in colors indicated \*  
**navy** J181\*, **red** J182, **royal** J183, **black** J185, **maroon** J188, **dark green** J189, **white** J191, **purple** J192, **oxford** J198



**\*J0040** | SUNSET

**MOISTURE MANAGEMENT SHIRT**

100% Polyester Moisture Management baby swiss pique tonal stripe shirt with a 2-button placket and hemmed sleeves. Union Made in USA. Sizes: S-5XL  
**black combo** J0045, **grey combo** J0058

**\*W0040** | LADY SUNSET

**LADIES' MOISTURE MANAGEMENT SHIRT**

100% Polyester Moisture Management Fashion baby swiss pique tonal stripe shirt with a 2-button placket and hemmed sleeves. Union Made in USA. Sizes: S-3XL  
**red combo** W0042, **black combo** W0045, **blue combo** W0050, **grey combo** W0058

*\* This garment is sensitive to excessive heat such as a screen print dryer or industrial laundry dryer.*

WHILE SUPPLIES LAST



**J1100** | LINKS

**MOISTURE MANAGEMENT SHIRT**

Fashion Moisture Management shirt with a single feed stripe. Three button placket and hemmed sleeves. Union Made in USA. Sizes: S-5XL  
**black** J1105, **blue** J1110, **plum** J1112, **brown** J1113

**W1100** | LADY LINKS

**LADIES' MOISTURE MANAGEMENT SHIRT**

Fashion Moisture Management shirt with a single feed stripe. Two button placket and hemmed sleeves. Union Made in USA. Sizes: S-3XL  
**black** W1105, **blue** W1110, **plum** W1112, **brown** W1113

WHILE SUPPLIES LAST





WHILE  
SUPPLIES  
LAST



**J2200** | CORONA

**SPORT SHIRT WITH STRIPED TRIM**

Blended 60% cotton/40% polyester pique. Matching trim with center stripe detail on knit collar and welt, 3-button placket with matching chalk buttons, hemmed bottom.

Union Made in USA. Sizes: S-3XL

Big Sizes: 4XL and 5XL in colors indicated \*

navy J2201\*, black J2205\*, white J2211

**J2200P** | CORONA W/POCKET

white J2211P

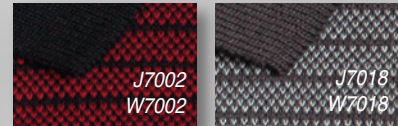
**W2200** | CORY

**LADIES' MODIFIED JENNY COLLAR SHIRT**

60% cotton/40% polyester pique. Matching Jenny style v-neck knit collar with contrasting v-inset and tipping, short sleeve with hem. Union Made in USA. Sizes: S-2XL

navy W2201, black W2205, white W2211

WHILE  
SUPPLIES  
LAST



**J7000** | SPYGLASS

**BIRDSEYE PATTERN SPORT SHIRT**

100% cotton jersey birdseye pattern tonal stripe. 3 smoke button placket. Contrasting solid collar, hem sleeves.

Union Made in USA. Sizes: S-5XL

red J7002, grey J7018

**W7000** | LADY SPYGLASS

**LADIES' BIRDSEYE PATTERN SPORT SHIRT**

100% cotton jersey birdseye pattern tonal stripe. 2 smoke button placket. Contrasting solid collar, capped hem sleeves.

Union Made in USA. Sizes: S-3XL

red W7002, grey W7018



WHILE  
SUPPLIES  
LAST

**J9400 | UNION MAN**

**COTTON GOLF SHIRT**

100% cotton pique golf shirt with fashion "Union Specific" woven collars. Union Made in USA. Sizes: S-5XL

- navy body/gold letters (UFCW) J9401F
- navy body/gold letters (USW) J9401S
- black body/gold letters (UAW) J9405A
- dk green body/navy letters (AFSCME) J9409A
- black body/purple letters (SEIU) J9405S
- black body/red letters (CWA) J9405C

**W9400 | UNION LADY**

**LADIES' COTTON GOLF SHIRT**

100% cotton pique golf shirt with fashion "Union Specific" woven collars. Union Made in USA. Sizes: S-3XL

- navy body/gold letters (UFCW) W9401F
- navy body/gold letters (USW) W9401S
- black body/gold letters (UAW) W9405A
- dk green body/navy letters (AFSCME) W9409A
- black body/purple letters (SEIU) W9405S
- black body/red letters (CWA) W9405C

WHILE  
SUPPLIES  
LAST



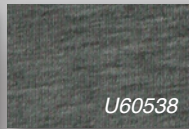
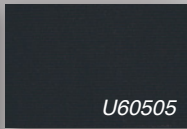
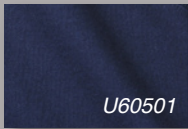
**W7120 | LAUREN**

**LADIES' 3/4 LENGTH CREW**

92% cotton, 8% spandex jersey, 3/4 length sleeve crewneck pullover. Tapered fit, hemmed sleeve. Union made in USA. Sizes: S-3XL

- black W7125, sky blue W7130, white W7131, pink W7137





**U605** | LEGACY VEST

**FLEECE VEST**

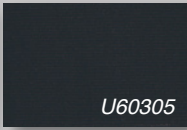
Soft 80% cotton/20% polyester 9 oz fleece vest. Union made in USA. Sizes: S-5X  
**navy** U60501, **black** U60505, **charcoal** U60538



**U602** | LEGACY

**CREWNECK SWEATSHIRT**

Soft 80% cotton/20% polyester heavyweight 9 oz. crew neck fleece sweatshirt. Union Made in USA. Sizes: S-5XL  
**navy** U60201, **black** U60205, **charcoal** U60258



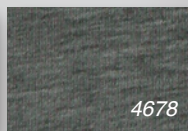
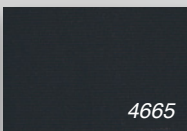
**U603** | LEGACY PULLOVER

**FLEECE HOODY**

Soft 80% cotton/ 20% polyester heavyweight 9 oz. fleece pullover hoody. Muff pockets.

Union Made in USA. Sizes: S-5XL

**navy** U60301, **black** U60305, **charcoal** U60338



**4660** | LEGACY HOOD

**CLASSIC FULL ZIP HOODY**

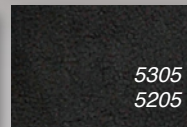
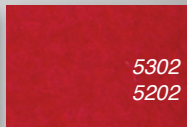
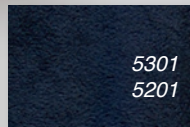
Soft 80% cotton/20% polyester heavyweight 9 oz. fleece full zip hooded sweatshirt with kangaroo pockets.

Union Made in USA. Sizes: S-5XL

**navy** 4661, **black** 4665, **charcoal** 4678







**5300** | TUNDRA

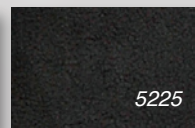
**POLAR FLEECE PULLOVER**

100% Polyester polar fleece 1/4 zip pullover in solid colors. Side entry pockets, hemmed open bottom and elastic cuffs. Union made in USA. Sizes: S-5XL  
**navy 5301, red 5302, black 5305**

**5200** | EXPLORER

**POLAR FLEECE JACKET**

100% Polyester polar fleece full zip jacket in solid colors. Side entry pockets and elastic bottom and cuffs. Union made in USA. Sizes: S-5XL  
**navy 5201, red 5202, black 5205**



**5220** | SHADOW

**FASHION POLAR FLEECE JACKET**

Polar fleece jacket with fashion Microfiber top panel. Full-zip front, side pockets with self-elastic cuff and bottom. Union Made in USA. Sizes: S-5XL  
**navy 5221, black 5225**

*NEW style*



L4075



L4065



*NEW style*

**L4060** | LADY SHOAL

**LADIES' FULL ZIP JACKET**

100% polyester full zip ladies' jacket. Zip thru collar, welt pockets with hemmed bottom and sleeves. Union Made in the USA. Sizes: S-3XL  
**black** L4065, **stone** L4075

Men's Companion Style  
4060 Shoal - page 10





4301



4305



*NEW style*

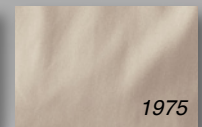
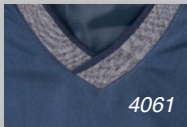
4310

**4300** | MENTONE

**FASHION PULLOVER**

Unlined Microfiber 1/4 zip windshirt with matching knit collar and exposed coil zipper. Side seam pockets, elastic cuffs and an open bottom. Union Made in the USA. Sizes: S-5XL

**navy** 4301, **black** 4305, **periwinkle** 4310



**4060** | FAIRVIEW

**MICROFIBRE WINDSHIRT**

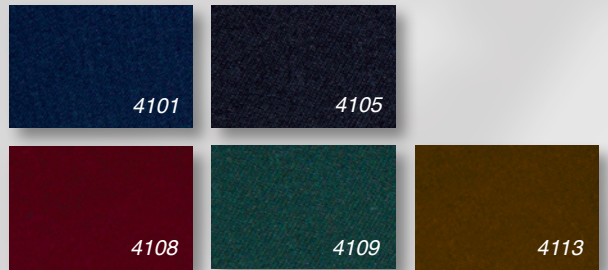
100% polyester microfibre with 100% nylon taffeta lining. Athletic lap v-neck knit collar, set-in sleeve, birdseye trim with solid tipping on collar, cuff and waistband, convenient side seam pockets. Union Made in USA. Sizes: S-5XL  
**navy 4061, black 4065**

**1960** | FINLEY

**POPLIN GOLF PULLOVER**

65% polyester/35% soft cotton micro poplin. Soft knit lap crewneck collar, set-in sleeve, convenient side seam pockets, matching knit trim at cuff and waistband. Union Made in USA. Sizes: S-5XL  
**navy 1961, black 1965, khaki 1975**





**4100** | JOURNEY

**MICROFIBRE WINDSHIRT**

Unlined, solid colored Microfibre windshirt. Side entry pockets with drop crew neck and matching knit. Union Made in USA. Sizes: S-5XL  
**navy** 4101, **black** 4105, **burgundy** 4108, **dark green** 4109, **brown** 4113



**4200** | WEEKEND

**MICROFIBRE LINED WINDSHIRT**

Solid colored Microfibre windshirt with black nylon lining. Side entry pockets with drop crew neck and matching knit. Union Made in USA. Sizes: S-5XL  
**navy** 4201, **black** 4205, **burgundy** 4208, **dark green** 4209, **brown** 4213



**1700** | FENWAY

**POPLIN BASEBALL JACKET**

65% polyester/35% soft cotton micro poplin with lightweight 100% nylon lining. Full zip front with antique brass zipper, knit trim collar, cuff and waistband with accent striping, contrasting set-in sleeve, welt pockets, inside pocket. Union Made in USA. Sizes: S-5XL

navy/stone 1701

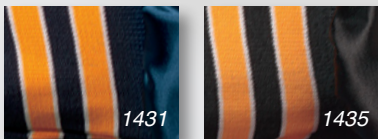


**1470** | SOLID SATIN QUILT LINED

**SOLID SATIN QUILT LINED**

Water resistant 100% DuPont® nylon satin with winterweight 100% polyester quilt lining. Full snap front, double welt storm flap, matching solid knit trim on collar, cuff and waistband, raglan sleeve, slash pockets. Union made in USA. Sizes: S-3XL

navy 1471, red 1472, royal 1473, black 1475



**1430** | PRO SATIN QUILTED

**SATIN AWARD JACKET WITH STIPED TRIM**

Water resistant 100% DuPont® nylon satin with winterweight 100% polyester quilt lining. Full snap front, double welt storm flap, striped knit trim on collar, cuff and waistband, raglan sleeve, slash pockets. Union made in USA. Sizes: S-3XL

navy w/navy-white-gold 1431, black w/black-white-gold 1435



**4490** | WOODCLIFF

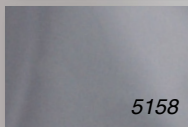
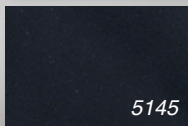
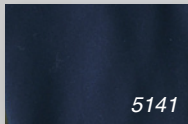
**GENTLEMAN'S JACKET**

65% polyester/35% soft cotton micro Poplin. Full zip jacket, lightly lined with nylon, contrasting color inside collar with drawstrings and cordlocks, front cape for clean finish embroidery, set-in sleeves with self-elastic cuff, welt pockets, set-on self-elastic waistband. Union made in USA. Sizes: S-5XL

navy w/gray 4491, black w/khaki 4495







**5140** | CHURCHILL

**UNLINED MICROFIBRE SPORT JACKET**

100% Polyester heavier-weight Microfibre unlined jacket with exposed coil zipper. Zip-thru collar, ½ elastic cuff, vertical double-welted pockets with an hemmed open-bottom.

Union Made in the USA. Sizes: S-5XL

**navy** 5141, **black** 5145, **grey** 5158



**4920** | DOWNTOWN

**MICROFIBRE SPORT JACKET**

Full zip, 100% Microfibre jacket with nylon lining. Two-color collar with a contrasting storm flap. Fake cape with an inside pocket and gathered elastic waist. Union Made in USA. Sizes: S-5XL

**navy/gold** 4921, **black/khaki** 4925, **green/navy** 4929



**2860** | DAWSON

**MICROFIBRE SPORT JACKET**

Microfibre jacket lined with 100% nylon taffeta. Zip-thru contrasting collar, set-in sleeve with solid nylon knit cuff, zip front, nylon knit waistband, inside pocket. Union Made in USA. Sizes: XS-5XL  
**navy/khaki 2861, black/silver 2865, khaki/black 2875**



**2800** | LUXURY

**MICROFIBRE GENTLEMEN'S JACKET**

Microfibre gentlemen's jacket with black nylon lining. Side entry pockets with drop neck and matching knit. Woodtone button cuff closure. Union Made in USA. Sizes: S-5XL  
**navy 2801, black 2805, burgundy 2808, brown 2813**



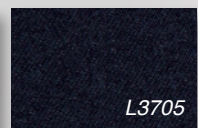
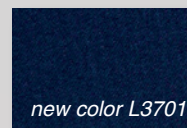




**3700** | CHALLENGER

**SOFT SHELL JACKET**

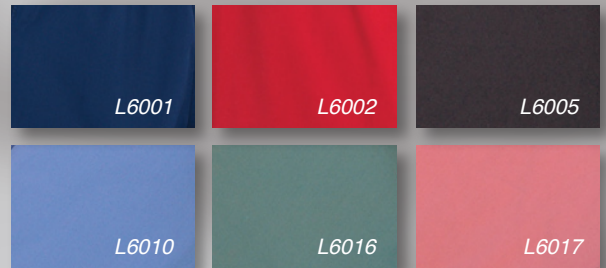
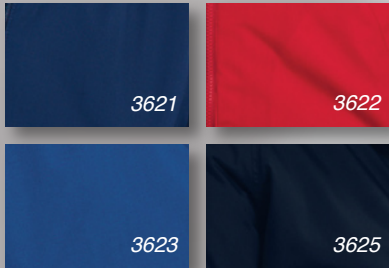
94% polyester/6% spandex bonded fleece full zip jacket with zip through collar and additional right chest fashion zipper. Self-elastic cuff, welt pockets, inside storm flap and hemmed open-bottom. Union Made in USA. Sizes: S-5XL **navy** 3701-new, **black** 3705



**L3700** | LADY CHALLENGER

**SOFT SHELL LADIES JACKET**

94% polyester/6% spandex bonded fleece full zip jacket with zip through collar and additional right chest fashion zipper. Self-elastic cuff, welt pockets, inside storm flap and hemmed open-bottom. Union Made in USA. Sizes: S-3XL **navy** L3701-new, **black** L3705



**3620** | VOYAGE

**CLASSIC SQUALL JACKET**

Heavyweight poplin shell, lined with micro polar fleece lining. Zip-thru collar, slash pockets, inside pocket, knit cuff and waistband. Union Made in USA. Sizes: S-5XL  
**navy 3621, red 3622, royal 3623, black 3625**

**L6000** | DARBY

**LADIES' CLASSIC SQUALL JACKET**

Heavyweight Poplin with micropolar fleece lining. Ladies' styled jacket features zip-thru collar, open cuff and bottom with double welt pockets. Union Made in USA. Sizes: S-3XL  
**navy L6001, red L6002, black L6005, blue L6010, sage L6016, coral L6017**



*NEW style*



6945

**6940** | BLOCKER

**EXTREME WEATHER PARKA**

Full-length micro-waterproof coated, winter-weight jacket with a heavyquilt lining. Quilted sleeves with a hidden storm cuff, kangaroo pockets and a self turn-down collar. Garment is not seam-sealed.

Union Made in USA. Sizes: S-5XL

**black 6945**

**6900** | ELEMENTS

**RAIN JACKET**

100% Nylon Taslon rain jacket with breathable micro-waterproof coating. Hidden hood, mesh lining and front zipper closure with snap storm flap. Adjustable velcro cuffs and flap closure top entry pockets. \*Garment is not seam sealed. Union Made in USA. Sizes: S-5X  
**black 6905**



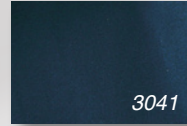
**3600** | ADVANTAGE

**3-IN-1 SYSTEMS JACKET**

3-in-1 jacket, micro poplin shell with nylon lining, double entry pockets, zip-thru collar, inside pocket, inner, zip-out vest of micro polar fleece. Union Made in USA. Sizes: S-5XL  
**navy 3601, black 3605**



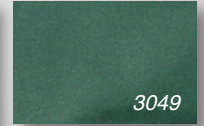




3041



3045



3049

**3040** | KENDALL

**UTILITY JACKET**

65% polyester/35% cotton soft micro poplin, 100% year-round quilted nylon lining with 3.3 oz. polyfil. Zipper/snap front closure, faux cape, set-in sleeve with self-elastic cuff, contrasting color detail, inside pocket, self-elastic waist.

Union Made in USA. Sizes: S-5XL

**navy/khaki 3041, black/khaki 3045, dark green/khaki 3049**



**1300** | CUMBERLAND

**HOODED CANVAS DUCK JACKET**

Heavyweight Canvas Duck lined with 100% Polyester diamond patterned thermal. Drawstring hood, full zip front with large brass pull, raglan sleeve with nylon knit cuff and waistband, large pouch pockets, inside pocket. Union Made in USA.

Sizes: S-5XL

**spice 1304, black 130503**

*NEW style*



**6500** | STATION

**HEAVYWEIGHT CANVAS DUCK JACKET**

100% cotton heavyweight Canvas Duck jacket with a cotton sheeting lining, tone-on-tone matching corduroy collar and a left front-chest fashion zipper. Full zip brass zippered front with slash pockets and an adjustable snap cuff. Waist-length open-bottom. Union Made in USA. Sizes: S-5XL  
**black 6505**





*NEW style*



6801



6804



6805

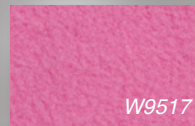
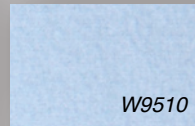
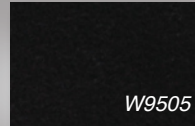
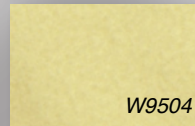
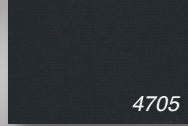
**6800** | CANYON

**FULL-FIT DUCK JACKET**

100% cotton heavy-weight Canvas Duck jacket with quilt lining. Raglan sleeves, pouch pockets, inside pocket and brass zipper. Knit cuffs and with modified waistband and tone on tone matching collar. Union Made in USA. Sizes: S-5XL

**navy** 6801, **spice** 6804, **black** 6805

WHILE SUPPLIES LAST



WHILE SUPPLIES LAST



**4700** | OUTBACK

**POLAR FLEECE CREW NECK**

Long sleeve polar fleece crew neck with a hemmed sleeve and open bottom.

Union Made in USA. Sizes: S-5XL

navy 4701, black 4705, charcoal 4718

**W9500** | OUTLOOK

**FULL ZIP LADIES' HOOD**

100% Polyester, Micro Chamois double-sided fleece hoodie. Full zip with kangaroo pocket, elastic cuff and open bottom.

Union Made in USA. Sizes: S-3XL

yellow W9504, black W9505, blue W9510, pink W9517

WHILE SUPPLIES LAST



WHILE SUPPLIES LAST



**3660** | STORM

**VERSATILE JACKET**

Hi-count 4-ply Taslan jacket with charcoal fleece lining. Zippered front with inside storm flap with elastic cuffs, slash pockets along with an inside pocket. Union Made in the USA. S-5XL navy 3661, black 3665

**1480** | SOLID SATIN FLANNEL LINED

**SATIN AWARD JACKET WITH FLANNEL LINED**

Water resistant 100% DuPont® nylon satin with year-round brushed polyester flannel. Full zip front, matching solid knit trim on collar, cuff and waistband, raglan sleeve, slash pockets. Union Made in USA. Sizes: S-3XL navy 1481, black 1485



## INDEXED BY SERIES NUMBER

SERIES	NAME	PAGE
1300	Cumberland	31
1430	Pro Satin Quilted	24
1470	Solid Satin Quilted	24
1480	Solid Satin Flannel	34
1700	Fenway	24
1960	Finley	22
2800	Luxury	26
2860	Dawson	26
3040	Kendall	31
3600	Advantage	30
3620	Voyage	28
3660	Storm	34
3700	Challenger	27
4060	Fairview	22
4100	Journey	23
4200	Weekend	23
<b>4300</b>	<b>Mentone</b>	<b>21</b>
4490	Woodcliff	24
4660	Legacy Hood	18
4700	Outback	34
4920	Downtown	25
5140	Churchill	25
5200	Explorer	19
5220	Shadow	19
5300	Tundra	19
<b>6500</b>	<b>Station</b>	<b>32</b>
<b>6800</b>	<b>Canyon</b>	<b>33</b>
6900	Elements	30
<b>6940</b>	<b>Blocker</b>	<b>29</b>
J0000	Jazz	6
J0000P	Jazz w/ pocket	6
J0040	Sunset	14
J1100	Links	14
J1120	Performer	9
J180	Skyline (Darks)	13
J191	Skyline (White)	13
J2200	Corona	15
J2200P	Corona w/pocket	15
J2300	Weston	7
J2320	Joplin	7
J2340	Gibbs	13
J2340P	Gibbs w/ pocket	13
J3300	Edge	8
<b>J3500</b>	<b>Napa</b>	<b>5</b>

## INDEXED BY SERIES NAME

NAME	SERIES	PAGE
Advantage	3600	30
<b>Blocker</b>	<b>6940</b>	<b>29</b>
Breeze	J9300	6
<b>Canyon</b>	<b>6800</b>	<b>33</b>
Challenger	3700	27
Churchill	5140	25
Corona	J2200	15
Corona w/pocket	J2200P	15
Cory	W2200	15
<b>Crest</b>	<b>J4000</b>	<b>3</b>
Cumberland	1300	31
Darby	L6000	28
Dawson	2860	26
Downtown	4920	25
Edge	J3300	8
Elements	6900	30
Explorer	5200	19
Fairview	4060	22
Fenway	1700	24
Finley	1960	22
Freedom	USA	12
Gibbs	J2340	13
Gibbs w/ pocket	J2340P	13
Jazz	J0000	6
Jazz w/ pocket	J0000P	6
Joplin	J2320	7
Journey	4100	23
Kendall	3040	31
Lady Breeze	W9300	6
Lady Challenger	L3700	27
<b>Lady Crest</b>	<b>W4000</b>	<b>3</b>
Lady Edge	W3300	8
Lady Freedom	WUSA	12
Lady Gibbs	W2340	13
Lady Jazz	W0000	6
Lady Joplin	W2320	7
Lady Links	W1100	14
<b>Lady Napa</b>	<b>W3500</b>	<b>5</b>
Lady National	W4500	11
Lady National (White)	W4511	11
Lady Palmer	W9320	8
Lady Performer	W1120	9
<b>Lady Shoal</b>	<b>L4060</b>	<b>20</b>
Lady Spyglass	W7000	15
<b>Lady Stillwell</b>	<b>W4020</b>	<b>4</b>
Lady Sunset	W0040	14
Lady Tradition	W4600	12
Lady Weston	W2300	7
Lauren	W7120	16
Legacy Crewneck	U602	17
Legacy Hood	4660	18
Legacy Pullover	U603	18
Legacy Vest	U605	17
Links	J1100	14
Luxury	2800	26
<b>Mentone</b>	<b>4300</b>	<b>21</b>
<b>Napa</b>	<b>J3500</b>	<b>5</b>
National (Darks)	J4500	11
National (White)	J4511	11
National Long Sleeve	J4500L	11
National w/pocket	J4500P	11
Outback	4700	34
Outlook	W9500	34
Palmer	J9320	8
Performer	J1120	9
Pro Satin Quilted	1430	24
Shadow	5220	19
<b>Shoal</b>	<b>J4060</b>	<b>10</b>
Skyline (Darks)	J180	13
Skyline (White)	J191	13
Solid Satin Flannel	1480	34
Solid Satin Quilted	1470	24
Spyglass	J7000	15
<b>Station</b>	<b>6500</b>	<b>32</b>
<b>Stillwell</b>	<b>J4020</b>	<b>4</b>
Storm	3660	34
Sunset	J0040	14
Tradition (Darks)	J4600	12
Tradition (White)	J4611	12
Tradition w/pocket	J4600P	12
Tradition White w/pocket	J4611P	12
Tundra	5300	19
Union Lady	W9400	16
Union Man	J9400	16
Voyage	3620	28
Weekend	4200	23
Weston	J2300	7
Woodcliff	4490	24



*“ask for the king”*



**King Louie**  
*america*

[www.kinglouie.com](http://www.kinglouie.com)

asi/64860    ppai/337199