

UE 10 Series Pressure Switches

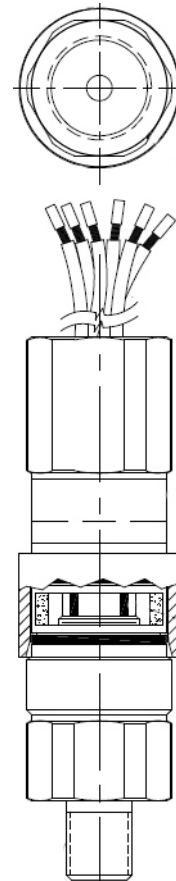
MNA Purchase Item

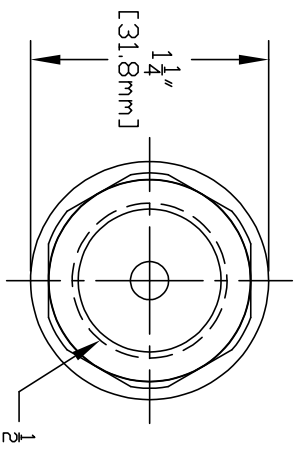
Technical Data Sheet: K0006589 REVISION 0 Date: 6 Jul 2011

Description:

United Electric Series 10 Pressure Switches, see page 2 for United Electric Control Company data sheet, A13849.

Marioff Stock Code	MU1265	MU1266	MU1264
---------------------------	--------	--------	--------



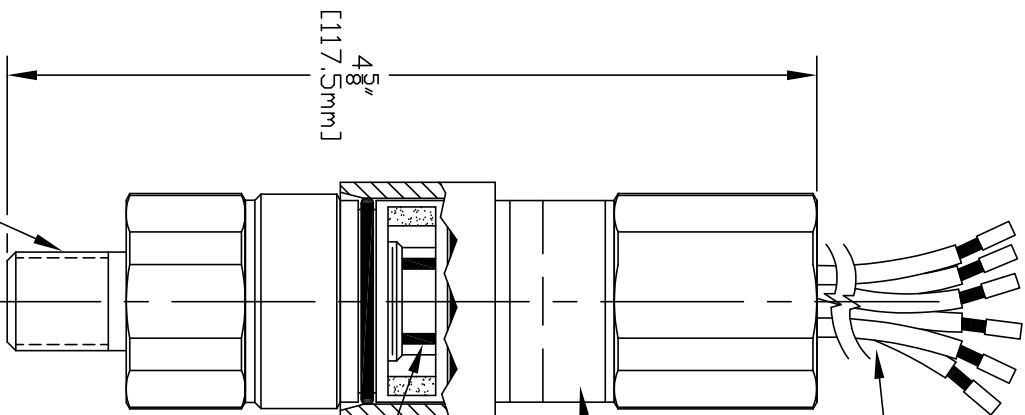


MODEL NO.	ADJUSTABLE RANGE	THREAD	P/C DRIFICE	SET POINT	CUST PART #
	psi	bar		psi	
10-15765	100 TD 1000	6.9 TD 69	1/4 BSBP	290 DN FALL	20 DN FALL MU1265
10-15766	180 TD 3000	12.4 TD 206.8	1/8 BSBP	2175 DN FALL	150 DN FALL MU1266
10-16001	100 TD 1000	6.9 TD 69	1/4 BSBP	725 DN RISE	50 DN RISE MU1264

WIRE COLOR CODING

BLUE (2) — N.C.
BLACK (2) — N.D.
BROWN (2) — COM.

FACTORY SEALED
6 LEADWIRES
72" LG.



THREAD,
SEE CHART
303 st/st

SPECIFICATIONS:

UE TYPE: 10-15765, 10-15766, 10-16001
CUSTOMER NAME: MARIOFF
CUSTOMER PART NO.: SEE CHART
RANGE: SEE CHART
PROOF PRESSURE: 10,000 psi
ELECTRICAL RATING: 5A 250 VAC
WETTED MAT'L: 303 st/st & BUNA-N
SETPPOINT: SEE CHART

APPROVALS:

-UL RECOGNIZED
-CUL CERTIFIED
-CE CERTIFIED TO LOW VOLTAGE DIRECTIVE
-ATEX COMPLIANCE TO INTRINSIC SAFETY (I.S.)

NOTE: DEAD-BAND ON THE 10-15765
WILL NOT EXCEED 8 bar/116 psi
DEAD-BAND ON THE 10-15766
WILL NOT EXCEED 31 bar/450 psi
DEAD-BAND ON THE 10-16001
WILL NOT EXCEED 10.3 bar/150 psi

SYM	DESCRIPTION	DATE	DWN	APPD
F	REDRAWN. ADDED 10-16001. SET POINT FOR 10-15765 WAS 290.1 DN FALL, 10-15766 WAS 2175.6 DN FALL.	8-11-09	SR	LK
ECN#	E3284			

ORIGINAL DATE	8/3/05	TITLE	DF001D
DRWN	PLW	10-15765	
CHKD	A,B,	-15766	
APPD	L.K.	-16001	
UNLESS OTHERWISE SPECIFIED DIMENSIONS ARE IN INCHES TOLERANCES DN FRACTIONS #1/64 2 PLACE DEC 3 PLACE DEC ANGLES #0.010 #0.005 #1/2° DO NOT SCALE THIS DRAWING		USED DN:	
		SCALE NONE	
		DWG NO	A-13849
		UNITED ELECTRIC CONTROLS COMPANY WATERDOWN * MASSACHUSETTS	