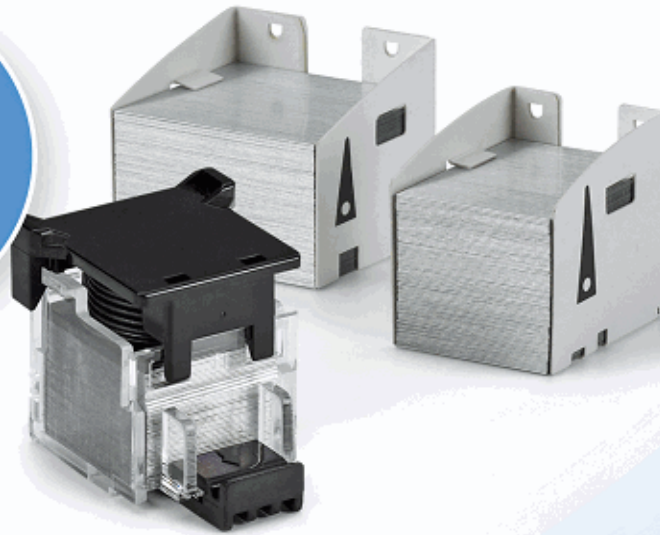


STAPLE CARTRIDGE

Cross-Reference Guide

FOR
COPIERS
& MFPS



North America 2020

Swingline®

IMPORTANT NOTE: In order to purchase the correct staples for your machine, it is important that you reference the **FINISHER** Model Identification Number. **DO NOT purchase staples based on the copier model number alone.**

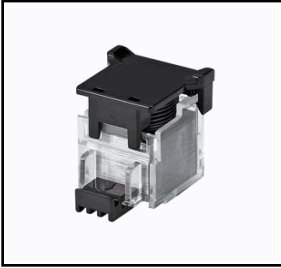
To locate the FINISHER Model Identification Number, first identify the finisher unit in relation to the copier unit. In most instances you will need to separate the finisher unit from the copier unit to access the model information. The location of the FINISHER Model Identification Number will vary depending on the model manufacturer.



Finisher Unit

Copier/MFP Unit

Kyocera Mita



Katun Part Number

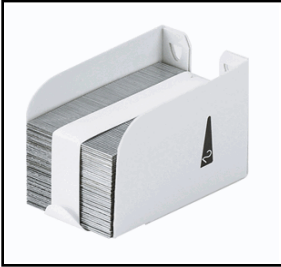
36749

Type	Size (mm)
D2	26x25x32

Your Price:

Finisher	Model	OEM Part Number
AS- S 2010		59982040
	DC 1755	✓
	DC 1856	✓
	DC 1860	✓
	DC 2355	✓
	DC 2360	✓
AS- S 2110		59982040
	DC 1860	✓
	DC 2360	✓
AS- S 2120		59982040
	AI 3030	✓
	DC 1860	✓
	DC 2360	✓
	DC 3060	✓
	DC 4090	✓
DF- 78		59982040
	KM 2530	✓
	KM 3035	✓
	KM 3530	✓
	KM 4030	✓
	KM 4035	✓
	KM 5035	✓
F- 2305		59982040
	KM 2530	✓
	KM 3530	✓
F- 4220		59982040
	KM 4230	✓
	KM 5230	✓
	KM 6230	✓

Kyocera Mita



Finisher Model OEM Part Number

DF- 410		5AX82010
	KM 1650	✓
	KM 2050	✓
	KM 2550	✓

DF- 420		5AX82010
	TASKALFA 181	✓
	TASKALFA 221	✓

Katun Part Number

36751

Type Size (mm)
L1 35x21x25

Your Price:

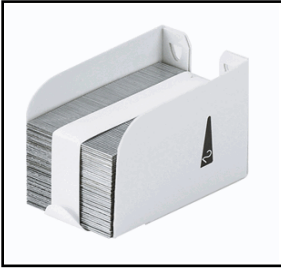
DF- 470		5AX82010
	ECOSYS M 4132	✓
	ECOSYS M 8130	✓
	FS 6525	✓
	FS 6530	✓
	FS C 8520	✓
	FS C 8525	✓
	TASKALFA 205	✓
	TASKALFA 255	✓
	TASKALFA 2550	✓
	TASKALFA 2551	✓
	TASKALFA 3010	✓
	TASKALFA 305	✓
	TASKALFA 3051	✓
	TASKALFA 3501	✓
	TASKALFA 3510	✓
	TASKALFA 3511	✓
	TASKALFA 3551	✓
	TASKALFA 4002	✓
	TASKALFA 4501	✓
	TASKALFA 4551	✓
	TASKALFA 5002	✓
	TASKALFA 5501	✓
TASKALFA 5551	✓	
TASKALFA 6002	✓	
TASKALFA 6501	✓	
TASKALFA 7551	✓	
TASKALFA 8001	✓	

DF- 670		5AX82010
	KM 2540	✓
	KM 2560	✓
	KM 3040	✓
	KM 3060	✓

DF- 720		5AX82010
	KM 3050	✓
	KM 5050	✓
	TASKALFA 420	✓
	TASKALFA 520	✓

DF- 73		5AX82010
	KM 3035	✓
	KM 4035	✓
	KM 5035	✓

Kyocera Mita



Katun Part Number

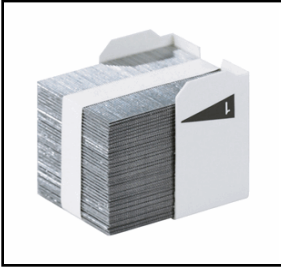
36751

Type	Size (mm)
L1	35x21x25

Your Price:

Finisher	Model	OEM Part Number
DF- 730		5AX82010
	FS 9130	✓
	FS 9530	✓
	FS C 8100	✓
	KM 2540	✓
	KM 3050	✓
	KM 5050	✓
	KM C 2520	✓
	KM C 2525	✓
	KM C 3225	✓
	KM C 3232	✓
TASKALFA 3010	✓	
DF- 78		5AX82010
	KM 2530	✓
	KM 3035	✓
	KM 3530	✓
	KM 4030	✓
	KM 5035	✓
F- 2110		5AX82010
	AI 2020	✓
F- 2205		5AX82010
	KM 2030	✓
F- 3130		5AX82010
	AI 2310	✓
	AI 3010	✓

Kyocera Mita



Katun Part Number

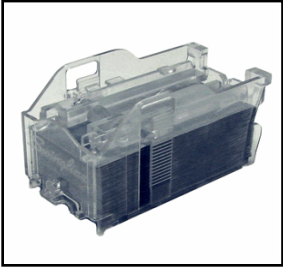
36755

Type	Size (mm)
J1	35x28x33

Your Price:

Finisher	Model	OEM Part Number
DF- 75		5GH82010
	KM 1530	✓
	KM 2530	✓
	KM 3035	✓
	KM 3530	✓
	KM 4030	✓
	KM 4035	✓
	KM 5035	✓
F- 8430		5GH82010
	KM 1530	✓
	KM 2530	✓
	KM 3530	✓

Kyocera Mita



Katun Part Number

37664

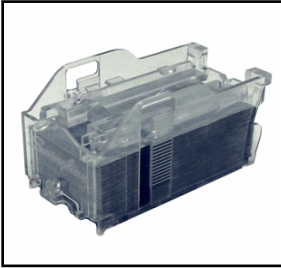
Type Size (mm)
P1 61.5x33x34

Your Price:

Finisher	Model	OEM Part Number	
		1903JY0000	SH-10
BF- 730	FS C 8650	✓	✓
	TASKALFA 2551	✓	✓
	TASKALFA 2552	✓	✓
	TASKALFA 3010	✓	✓
	TASKALFA 3011	✓	✓
	TASKALFA 3050	✓	✓
	TASKALFA 3051	✓	✓
	TASKALFA 306	✓	✓
	TASKALFA 3252	✓	✓
	TASKALFA 3500	✓	✓
	TASKALFA 3501	✓	✓
	TASKALFA 3510	✓	✓
	TASKALFA 3511	✓	✓
	TASKALFA 3550	✓	✓
	TASKALFA 3551	✓	✓
	TASKALFA 356	✓	✓
	TASKALFA 4002	✓	✓
	TASKALFA 4052	✓	✓
	TASKALFA 406	✓	✓
	TASKALFA 4500	✓	✓
	TASKALFA 4501	✓	✓
	TASKALFA 4550	✓	✓
	TASKALFA 4551	✓	✓
	TASKALFA 5002	✓	✓
	TASKALFA 5052	✓	✓
	TASKALFA 5500	✓	✓
	TASKALFA 5501	✓	✓
	TASKALFA 5550	✓	✓
	TASKALFA 5551	✓	✓
	TASKALFA 6002	✓	✓
	TASKALFA 6052	✓	✓
	TASKALFA 6500	✓	✓
	TASKALFA 6501	✓	✓
	TASKALFA 6550	✓	✓
TASKALFA 6551	✓	✓	
TASKALFA 7002	✓	✓	
TASKALFA 7052	✓	✓	
TASKALFA 7550	✓	✓	
TASKALFA 7551	✓	✓	
TASKALFA 8000	✓	✓	
TASKALFA 8001	✓	✓	
TASKALFA 8002	✓	✓	
TASKALFA 8052	✓	✓	
DF- 420		1903JY0000	SH-10
	TASKALFA 181	✓	✓
	TASKALFA 221	✓	✓
DF- 470		1903JY0000	SH-10
	ECOSYS M 4132	✓	✓
	ECOSYS M 8130	✓	✓
	FS 6525	✓	✓
	FS 6530	✓	✓
	FS C 8520	✓	✓
	FS C 8525	✓	✓
	TASKALFA 205	✓	✓
	TASKALFA 255	✓	✓
	TASKALFA 2550	✓	✓
	TASKALFA 2551	✓	✓
	TASKALFA 3010	✓	✓
	TASKALFA 305	✓	✓
	TASKALFA 3051	✓	✓
	TASKALFA 3501	✓	✓
TASKALFA 3510	✓	✓	

**This document does not constitute an agreement for a price or sale. Prices shown are subject to change without notice. Contact your Katun sales representative for the current pricing information.

Kyocera Mita



Katun Part Number

37664

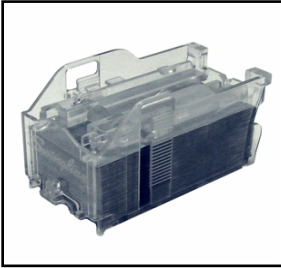
Type Size (mm)
P1 61.5x33x34

Your Price:

Finisher	Model	OEM Part Number	
DF-470	TASKALFA 3511	1903JY0000	SH-10
	TASKALFA 3551	✓	✓
	TASKALFA 3551	✓	✓
	TASKALFA 4002	✓	✓
	TASKALFA 4501	✓	✓
	TASKALFA 4551	✓	✓
	TASKALFA 5002	✓	✓
	TASKALFA 5501	✓	✓
	TASKALFA 5551	✓	✓
	TASKALFA 6002	✓	✓
	TASKALFA 6501	✓	✓
TASKALFA 7551	✓	✓	
TASKALFA 8001	✓	✓	
DF-5100	TASKALFA 2551	1903JY0000	SH-10
	TASKALFA 3010	✓	✓
	TASKALFA 3010	✓	✓
	TASKALFA 3051	✓	✓
	TASKALFA 306	✓	✓
	TASKALFA 307	✓	✓
	TASKALFA 308	✓	✓
	TASKALFA 3501	✓	✓
	TASKALFA 3510	✓	✓
	TASKALFA 3511	✓	✓
	TASKALFA 3551	✓	✓
	TASKALFA 356	✓	✓
	TASKALFA 358	✓	✓
	TASKALFA 4002	✓	✓
	TASKALFA 406	✓	✓
	TASKALFA 4501	✓	✓
	TASKALFA 4551	✓	✓
	TASKALFA 5002	✓	✓
	TASKALFA 5501	✓	✓
	TASKALFA 5551	✓	✓
	TASKALFA 6002	✓	✓
	TASKALFA 6501	✓	✓
	TASKALFA 7551	✓	✓
TASKALFA 8001	✓	✓	
DF-5110	TASKALFA 2551	1903JY0000	SH-10
	TASKALFA 3010	✓	✓
	TASKALFA 3010	✓	✓
	TASKALFA 3051	✓	✓
	TASKALFA 3501	✓	✓
	TASKALFA 3510	✓	✓
	TASKALFA 3511	✓	✓
	TASKALFA 3551	✓	✓
	TASKALFA 356	✓	✓
	TASKALFA 358	✓	✓
	TASKALFA 4002	✓	✓
	TASKALFA 406	✓	✓
	TASKALFA 4501	✓	✓
	TASKALFA 4551	✓	✓
	TASKALFA 5002	✓	✓
	TASKALFA 5501	✓	✓
	TASKALFA 5551	✓	✓
	TASKALFA 6002	✓	✓
	TASKALFA 6501	✓	✓
	TASKALFA 7551	✓	✓
TASKALFA 8001	✓	✓	
DF-5120	TASKALFA 2551	1903JY0000	SH-10
	TASKALFA 3010	✓	✓
	TASKALFA 3010	✓	✓
	TASKALFA 3051	✓	✓
	TASKALFA 3501	✓	✓
	TASKALFA 3510	✓	✓
	TASKALFA 3511	✓	✓
TASKALFA 3551	✓	✓	

**This document does not constitute an agreement for a price or sale. Prices shown are subject to change without notice. Contact your Katun sales representative for the current pricing information.

Kyocera Mita



Katun Part Number

37664

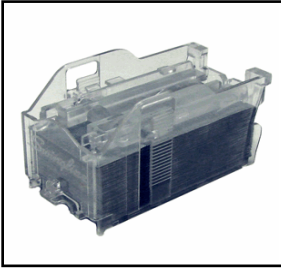
Type Size (mm)
P1 61.5x33x34

Your Price:

Finisher	Model	OEM Part Number	
DF- 5120	TASKALFA 356	1903JY0000	SH-10
	TASKALFA 358	✓	✓
	TASKALFA 4002	✓	✓
	TASKALFA 406	✓	✓
	TASKALFA 4501	✓	✓
	TASKALFA 4551	✓	✓
	TASKALFA 5002	✓	✓
	TASKALFA 5501	✓	✓
	TASKALFA 5551	✓	✓
	TASKALFA 6002	✓	✓
	TASKALFA 6501	✓	✓
	TASKALFA 7551	✓	✓
TASKALFA 8001	✓	✓	
DF- 710	FS 9130	1903JY0000	SH-10
	FS 9530	✓	✓
	FS C 8100	✓	✓
	KM 3050	✓	✓
	KM 4050	✓	✓
	KM 5050	✓	✓
	KM C 2520	✓	✓
	KM C 2525	✓	✓
	KM C 3225	✓	✓
	KM C 3232	✓	✓
	KM C 4035	✓	✓
	DF- 7100	TASKALFA 2551	1903JY0000
TASKALFA 2552		✓	✓
TASKALFA 2553		✓	✓
TASKALFA 3010		✓	✓
TASKALFA 3051		✓	✓
TASKALFA 3252		✓	✓
TASKALFA 3253		✓	✓
TASKALFA 3501		✓	✓
TASKALFA 3510		✓	✓
TASKALFA 3511		✓	✓
TASKALFA 3551		✓	✓
TASKALFA 3552		✓	✓
TASKALFA 3553		✓	✓
TASKALFA 4002		✓	✓
TASKALFA 4003		✓	✓
TASKALFA 4053		✓	✓
TASKALFA 4501		✓	✓
TASKALFA 4551		✓	✓
TASKALFA 5002		✓	✓
TASKALFA 5003		✓	✓
TASKALFA 5052		✓	✓
TASKALFA 5053		✓	✓
TASKALFA 5501		✓	✓
TASKALFA 5551		✓	✓
TASKALFA 6002		✓	✓
TASKALFA 6003		✓	✓
TASKALFA 6052		✓	✓
TASKALFA 6053		✓	✓
TASKALFA 6501	✓	✓	
TASKALFA 7551	✓	✓	
TASKALFA 8001	✓	✓	
DF- 7120	ECOSYS P 8060	1903JY0000	SH-10
	TASKALFA 2551	✓	✓
	TASKALFA 2552	✓	✓
	TASKALFA 2553	✓	✓
	TASKALFA 3010	✓	✓
	TASKALFA 3011	✓	✓
	TASKALFA 3051	✓	✓

***This document does not constitute an agreement for a price or sale. Prices shown are subject to change without notice. Contact your Katun sales representative for the current pricing information.*

Kyocera Mita



Katun Part Number

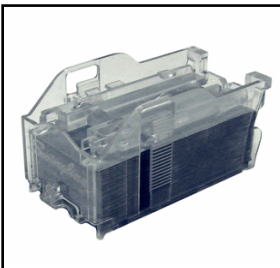
37664

Type Size (mm)
P1 61.5x33x34

Your Price:

Finisher	Model	OEM Part Number	
		1903JY0000	SH-10
DF- 7120	TASKALFA 3212	✓	✓
	TASKALFA 3252	✓	✓
	TASKALFA 3253	✓	✓
	TASKALFA 3501	✓	✓
	TASKALFA 3510	✓	✓
	TASKALFA 3511	✓	✓
	TASKALFA 3551	✓	✓
	TASKALFA 3552	✓	✓
	TASKALFA 3553	✓	✓
	TASKALFA 4002	✓	✓
	TASKALFA 4003	✓	✓
	TASKALFA 4012	✓	✓
	TASKALFA 4052	✓	✓
	TASKALFA 4053	✓	✓
	TASKALFA 4501	✓	✓
	TASKALFA 4551	✓	✓
	TASKALFA 5002	✓	✓
	TASKALFA 5003	✓	✓
	TASKALFA 5052	✓	✓
	TASKALFA 5053	✓	✓
	TASKALFA 5501	✓	✓
	TASKALFA 5551	✓	✓
	TASKALFA 6002	✓	✓
	TASKALFA 6003	✓	✓
	TASKALFA 6052	✓	✓
	TASKALFA 6053	✓	✓
	TASKALFA 6501	✓	✓
TASKALFA 7551	✓	✓	
TASKALFA 8001	✓	✓	
		1903JY0000	SH-10
DF- 760	TASKALFA 250	✓	✓
	TASKALFA 300	✓	✓
	TASKALFA 400	✓	✓
	TASKALFA 420	✓	✓
	TASKALFA 500	✓	✓
	TASKALFA 520	✓	✓
			1903JY0000
DF- 770	TASKALFA 2551	✓	✓
	TASKALFA 3010	✓	✓
	TASKALFA 3050	✓	✓
	TASKALFA 3051	✓	✓
	TASKALFA 3500	✓	✓
	TASKALFA 3501	✓	✓
	TASKALFA 3510	✓	✓
	TASKALFA 3511	✓	✓
	TASKALFA 3550	✓	✓
	TASKALFA 3551	✓	✓
	TASKALFA 4002	✓	✓
	TASKALFA 4500	✓	✓
	TASKALFA 4501	✓	✓
	TASKALFA 4550	✓	✓
	TASKALFA 4551	✓	✓
	TASKALFA 5002	✓	✓
	TASKALFA 5500	✓	✓
	TASKALFA 5501	✓	✓
	TASKALFA 5550	✓	✓
	TASKALFA 5551	✓	✓
	TASKALFA 6002	✓	✓
	TASKALFA 6501	✓	✓
	TASKALFA 6550	✓	✓
	TASKALFA 7550	✓	✓
TASKALFA 7551	✓	✓	
TASKALFA 8001	✓	✓	

Kyocera Mita



Katun Part Number

37664

Type	Size (mm)
P1	61.5x33x34

Your Price:

Finisher	Model	OEM Part Number	
DF- 770B		1903JY0000	SH-10
	FS C 8650	✓	✓
DF- 780		1903JY0000	SH-10
	TASKALFA 250	✓	✓
	TASKALFA 300	✓	✓
	TASKALFA 400	✓	✓
	TASKALFA 420	✓	✓
	TASKALFA 500	✓	✓
	TASKALFA 520	✓	✓
DF- 780B		1903JY0000	SH-10
	TASKALFA 552	✓	✓

Kyocera Mita



Katun Part Number

48247

Type Size (mm)
SH12 63.5x37.5x33.

Your Price:

Finisher	Model	OEM Part Number	
		1903NB0UN0	SH-12
DF- 7110	ECOSYS P 8060	✓	✓
	TASKALFA 2552	✓	✓
	TASKALFA 2553	✓	✓
	TASKALFA 3010	✓	✓
	TASKALFA 3051	✓	✓
	TASKALFA 3252	✓	✓
	TASKALFA 3253	✓	✓
	TASKALFA 3501	✓	✓
	TASKALFA 3510	✓	✓
	TASKALFA 3511	✓	✓
	TASKALFA 3551	✓	✓
	TASKALFA 3552	✓	✓
	TASKALFA 3553	✓	✓
	TASKALFA 4002	✓	✓
	TASKALFA 4003	✓	✓
	TASKALFA 4052	✓	✓
	TASKALFA 4053	✓	✓
	TASKALFA 4501	✓	✓
	TASKALFA 4551	✓	✓
	TASKALFA 5002	✓	✓
	TASKALFA 5003	✓	✓
	TASKALFA 5052	✓	✓
	TASKALFA 5053	✓	✓
	TASKALFA 5501	✓	✓
	TASKALFA 5551	✓	✓
	TASKALFA 6002	✓	✓
	TASKALFA 6003	✓	✓
	TASKALFA 6052	✓	✓
	TASKALFA 6053	✓	✓
	TASKALFA 6501	✓	✓
	TASKALFA 7002	✓	✓
	TASKALFA 7052	✓	✓
	TASKALFA 7551	✓	✓
TASKALFA 8001	✓	✓	
TASKALFA 8002	✓	✓	
TASKALFA 8052	✓	✓	
		1903NB0UN0	SH-12
DF- 790	TASKALFA 3010	✓	✓
	TASKALFA 3050	✓	✓
	TASKALFA 3051	✓	✓
	TASKALFA 3500	✓	✓
	TASKALFA 3501	✓	✓
	TASKALFA 3510	✓	✓
	TASKALFA 3511	✓	✓
	TASKALFA 3550	✓	✓
	TASKALFA 3551	✓	✓
	TASKALFA 4500	✓	✓
	TASKALFA 4501	✓	✓
	TASKALFA 4550	✓	✓
	TASKALFA 4551	✓	✓
	TASKALFA 5002	✓	✓
	TASKALFA 5500	✓	✓
	TASKALFA 5501	✓	✓
	TASKALFA 5550	✓	✓
	TASKALFA 5551	✓	✓
	TASKALFA 6002	✓	✓
	TASKALFA 6500	✓	✓
	TASKALFA 6501	✓	✓
	TASKALFA 6550	✓	✓
	TASKALFA 6551	✓	✓
TASKALFA 7550	✓	✓	
TASKALFA 7551	✓	✓	
TASKALFA 8000	✓	✓	
TASKALFA 8001	✓	✓	

Kyocera Mita



Katun Part Number

48247

Type	Size (mm)
SH12	63.5x37.5x33.

Your Price:

Finisher	Model	OEM Part Number	
DF- 790B		1903NB0UN0	SH-12
	FS C 8650	✓	✓
DF- 791		1903NB0UN0	SH-12
	TASKALFA 3010	✓	✓
	TASKALFA 3011	✓	✓
	TASKALFA 3051	✓	✓
	TASKALFA 3212	✓	✓
	TASKALFA 3501	✓	✓
	TASKALFA 3510	✓	✓
	TASKALFA 3511	✓	✓
	TASKALFA 3551	✓	✓
	TASKALFA 4002	✓	✓
	TASKALFA 4012	✓	✓
	TASKALFA 4501	✓	✓
	TASKALFA 4551	✓	✓
	TASKALFA 5002	✓	✓
	TASKALFA 5501	✓	✓
	TASKALFA 5551	✓	✓
	TASKALFA 6002	✓	✓
TASKALFA 6501	✓	✓	
TASKALFA 7551	✓	✓	
TASKALFA 8001	✓	✓	