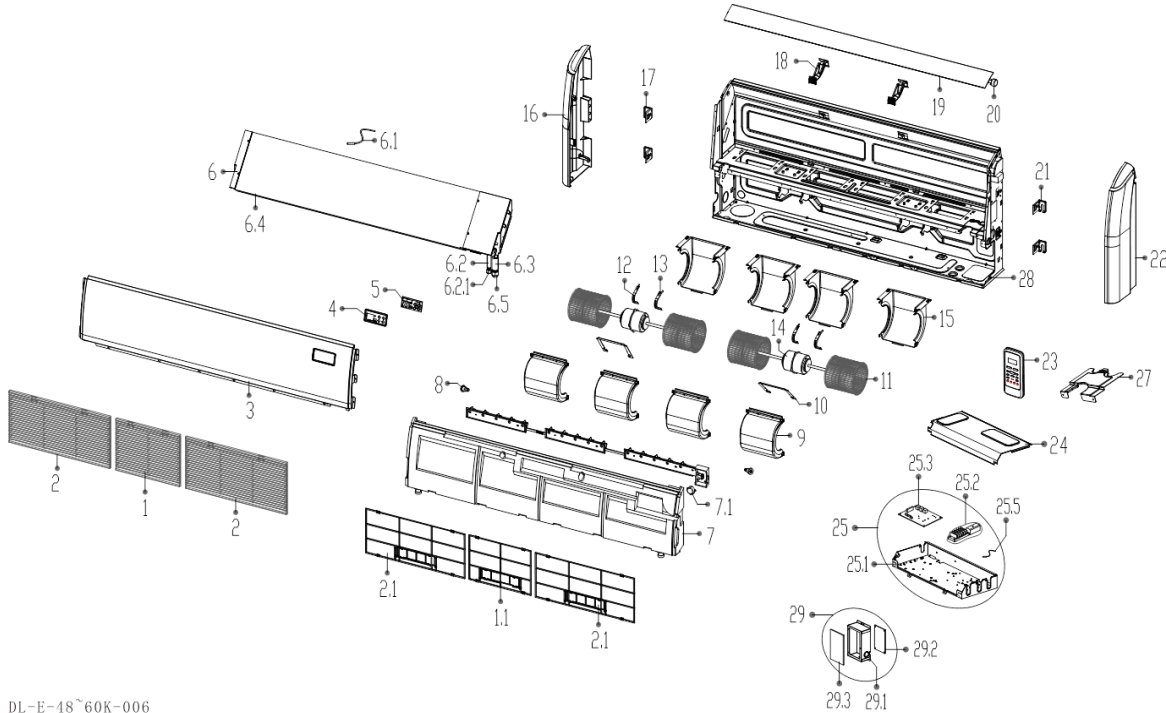


# Exploded View



|                       |                     |                     |                     |  |
|-----------------------|---------------------|---------------------|---------------------|--|
| <b>JCI Model:</b>     | YFJE48BXJ6AM-RX     |                     |                     |  |
| <b>Factory Model:</b> | 22022711000658      |                     |                     |  |
| <b>Power Supply:</b>  | null,FREQUENCY_60HZ | <b>Export Time:</b> | 2016-06-02 17:14:59 |  |



| No.   | Part Name   | Quantity | BOM Code        | Price | Remark |
|-------|---|----------|-----------------|-------|--------|
| 1     | Air Returning Grille Subassembly                            | 1.0      | 121M22700A00308 |       |        |
| 1.1   | Air Filter  | 1.0      | 121M00204000719 |       |        |
| 2     | Air Returning Grille Subassembly                            | 1.0      | 121M22700A00310 |       |        |
| 2.1   | Air Filter  | 1.0      | 121M00204000718 |       |        |
| 2     | Air Returning Grille Subassembly                            | 1.0      | 121M22700A00313 |       |        |
| 2.1   | Air Filter  | 1.0      | 121M00204000718 |       |        |
| 3     | Top cover   | 1.0      | 122M22700000093 |       |        |
| 4     | Display panel box   | 1.0      | 121M22700000044 |       |        |
| 5     | VLED Display Module   | 1.0      | 171M22700A00005 |       |        |
| 6     | Evaporator assembly Gas valve assembly                      | 1.0      | 158M22700000136 |       |        |
| 6.1   | Temperature Sensor  | 1.0      | 112M01007000006 |       |        |
| 6.1   | Temperature Sensor  | 1.0      | 112M01007000266 |       |        |
| 6.2   | Input pipes of Evaporator assemblyJoint board of Evaporator | 1.0      | 151M22700000414 |       |        |
| 6.2.1 | Copper nut  | 1.0      | 155M00406000010 |       |        |
| 6.3   | Outlet Pipes of Evaporator                                  | 1.0      | 151M22700000186 |       |        |
| 6.4   | Evaporator  | 1.0      | 158M22700000197 |       |        |
| 6.5   | Copper net  | 1.0      | 155M00406000003 |       |        |
| 7     | Water receiver subassembly                                  | 1.0      | 128M22700000009 |       |        |
| 7.1   | Stepper motor   | 1.0      | 110M02010000546 |       |        |
| 8     | Electricity preventing axis                                 | 2.0      | 121M22000000344 |       |        |
| 9     | Upper Volute  | 4.0      | 121M22700000049 |       |        |
| 10    | Motor Boarding  | 2.0      | 122M22300000230 |       |        |
| 11    | Plastic Fan Wheel   | 4.0      | 121M00103000165 |       |        |
| 12    | Motor clamp   | 2.0      | 122M22500000255 |       |        |

|      |   |     |                 |
|------|---|-----|-----------------|
| 13   | Motor clamp                             | 2.0 | 122M22500000253 |
| 14   | Brushless DC Motor                      | 2.0 | 110M02015000344 |
| 15   | Lower Scroll                            | 4.0 | 121M22700000113 |
| 16   | Cover plate (right)                     | 1.0 | 121M22700000087 |
| 17   | Installation Right Hanger               | 2.0 | 122M22700000018 |
| 18   | Guide holder                            | 2.0 | 121M22700000150 |
| 19   | Subassembly of Air Guide Strip          | 1.0 | 121M22700000059 |
| 20   | stepper motor                           | 1.0 | 110M02010000057 |
| 21   | Installation Left Hanger                | 2.0 | 122M22700000016 |
| 22   | Cover plate (left)                      | 1.0 | 121M22700000093 |
| 23   | Remote Controller                       | 1.0 | 173M17000001394 |
| 23.1 | Holder for remote controller            | 1.0 | 121M17000000104 |
| 24   | E-Part Box Cover Subassembly            | 1.0 | 122M22700000058 |
| 25   | E-Parts Box assembly                    | 1.0 | 172M22700000197 |
| 25.1 | Welding Parts of Electrical Control Box | 1.0 | 122M22700000083 |
| 25.2 | Wire joint, 5p                          | 1.0 | 174M00401000094 |
| 25.2 | Wire holder                             | 1.0 | 174M00401000006 |
| 25.3 | Indoor Main Control Board Subassembly   | 1.0 | 171M22700000389 |
| 25.5 | Room Temperature Sensor                 | 1.0 | 112M01007000073 |
| 27   | Connecting pipe clamp                   | 1.0 | 122M22700000054 |
| 28   | Chassis assembly                        | 1.0 | 122M22700000228 |
| 29   | Electrical Control Box Subassembly      | 2.0 | 172M22700000162 |
| 29.1 | Electrical Control Box                  | 1.0 | 122M23000000052 |
| 29.2 | Inverter Module Subassembly (Sticker)   | 1.0 | 171M22000008498 |
| 29.3 | Radiator                                | 1.0 | 112M03803000154 |