

Overhead Concealed Closers

**LEAK-FREE
GUARANTEED**



D200 & D200-SA Series

- Three control valves: Closing speed, latching speed and back check, fully adjustable after installation.
- D200-SA Series - 5-3/4" Short "A" Arm supplied for smaller top rail applications

D300 & D500

- Two control valves: Closing speed and latching speed, fully adjustable after installation.
- D300 Series - Grade 2
- D500 Series - ANSI 156.4 Grade 1

44CI Series Surface Closers - Grade 1

- Non-Sized Adjustable 1 Through 6; Standard with Back Check
- Universal Application for Regular Arm, Top Jamb, or Parallel Arm Mounting



850 & 880 Series Surface Closers

- Standard: 851, 852, 853, 854 and 855
- Back-Check: 883, 884 and 885



**1800 Series Surface Closers
Grade 1 • Fire Rated**

- Standard: 1803, 1804, and 1805
- Back-Check: 1803-BC, 1804-BC, and 1805-BC



5000-TP Series Surface Closers - Grade 1

- Adjustable spring power for a range of sizes. 1-6 adjustable backcheck and delay action, adjustable after installation.

8000-TP Series Surface Closers - Grade 1 • Fire Rated

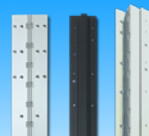
- Model 8051-TP Standard with Sweep, Latching, and Back-Check
- Model 8052-TP Standard with Sweep, Latching, and Delayed Action

9000-TP Series Surface Closers - Grade 1

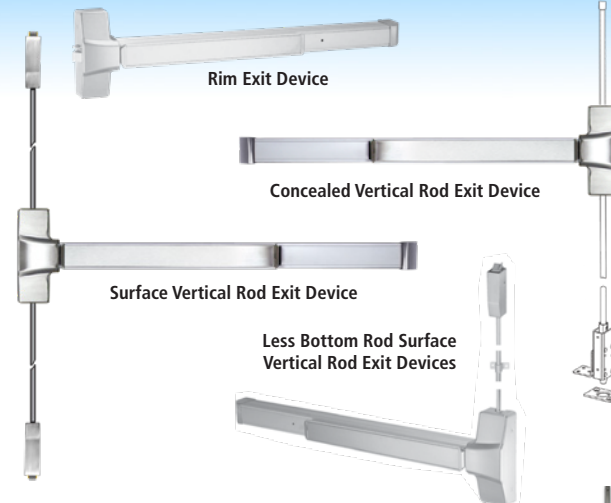
- Model 9001-TP: Adjustable spring power for a range of sizes 1-6 adjustable backcheck and delay action, adjustable after installation.
- Model 9003-TP: ADA (Handicap) multi-sized closer with adjustable Spring Power, 5 lb. opening force (Interior door)

Heavy Duty Aluminum Continuous Geared Hinges

- Concealed/Mortise Leaf Hinges: 117FM & 217FM
- Full Surface: 317FS, 417FS & 517FS
- Half Surface: 617HS



Mechanical Exit Devices



5000 Series Exit Device

- Light-Duty Models - Panic and Fire Rated

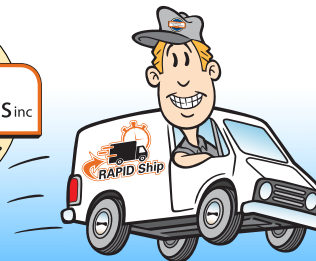
8000 Series Exit Device - Grade 1

- Panic and Fire Rated



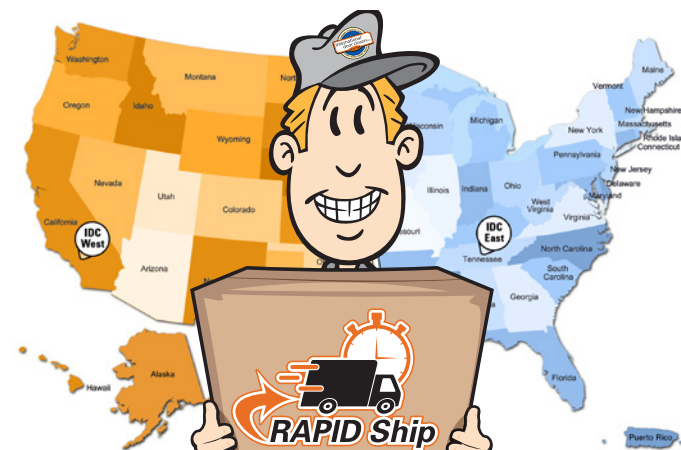
7000 Series Modern Flat Touch Bars

- Series 7100-G1 Grade 1 - Concealed Vertical Rod
- Series 7300-G1 Grade 1 - Rim Panic



RAPID Ship Inventory

**Reduce Transit Time & Shipping
Cost By Location**



West: 800-544-4422 • East: 800-225-6737

west@intldoorclosers.com east@intldoorclosers.com

www.intldoorclosers.com



West: 800-544-4422 • East: 800-225-6737

west@intldoorclosers.com east@intldoorclosers.com

www.intldoorclosers.com





DT-1850 "Long Throw" Deadlock

- Bolt 1-3/8" throw, made of 5 ply laminated steel with a hardened roller pin in a case hardened center ply for maximum security.



DH-1820-H • DH-1820-S

- DH-1820-H "Hook Bolt" Deadlock
- DH-1820-S "Short Throw" Deadlock
- Bolt 1 3/16" throw, made of 5 ply laminated steel with a hardened roller pin in a case hardened center ply for maximum security



DL-4510 Deadlatch Lock

- Field reversible for opposite hand
- Key controlled dogging
- Latch bolt 1/2" throw, Chrome plated with Delrin insert for smooth, quiet latching



For Use With:	Flat	Radius	Radius Weather-Stripping	Left Hand Beveled	Right Hand Beveled
DH-1820-H DH-1820-S	FP-1821	FP-1822	FP-1823	FP-1824	FP-1825
DT-1850	FP-1851	FP-1852	FP-1853	FP-1854	FP-1855
DL-4510	FP-4511	FP-4512	FP-4513	FP-4514	FP-4515

LI-4089 Lock Indicator Set

- For use with DH-1820 and DT-1850 type Deadlock
- Includes adhesive backed HS-4089 Header Sign:

THIS DOOR MUST REMAIN UNLOCKED DURING BUSINESS HOURS



DH-6000

- Heavy Duty Kick Down Holder

DH-6000-Tip

- Heavy Duty Kick Down Holder Tip



Offset Pivot Set Series 2000, 3000, 4000, 5000, 6000, 7000

- 3/4" Offset for use with Aluminum Doors and Frames
- 1/8" Easy vertical adjustment
- For doors up to 125lbs.



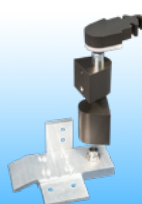
Series 2000



Series 3000



Series 4000



Series 5000



Series 6000



Series 7000



HL-4560 Lever Handle

- For use with DL-4510 type Latch Lock
- Cam Plug field reversible



PH-4520 Paddle Handle (Push or Pull)

- For use with DL-4510 type Latch Lock
- Field reversible for opposite hand with PUSH and PULL Plates include
- Cam Plug, field reversible, include



CP-4560 Cam Plug

- For use with HL-4560 Lever Handle and PH-4520 Paddle Handle
- Non-handed, field reversible

CZ-1001 Mortise Key Cylinders

- 1" Length 5 pin Cylinder 1-5/32" Diameter
- AR MS-Type cam, Core face and Key US 26D
- Cylinder ring 3/16" standard, 5/32" and 7/32" optional



TZ-3001 (Zinc) Mortise Thumbturn Cylinder

- 1" Length Cylinder 1-5/32" diameter
- AR MS-Type cam, Thumbturn US 26D
- Cylinder ring 3/16" standard, 5/32" and 7/32" optional



CG-4043 Cylinder Guard

- Hardened steel security ring
- Free-spinning beveled collar, For use on Aluminum
- For standard face 5 pin Mortise key cylinder



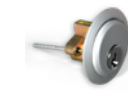
DC-2001 Mortise Dummy Cylinder

- 7/8" Length Cylinder 1-5/32" Diameter
- Cylinder ring 3/16" standard, 5/32" and 7/32" optional



RZ-1003 (Zinc) Rim Cylinder

- 5 pin Cylinder, Core face and Key US 26D
- Low profile Cylinder ring and adapter plate standard
- 1-7/8" Break-away screws and 1-1/4" Break-away
- Spindle standard, Schlage "C" Keyway



PUSH BAR

- PP-1000: Offset Pull & Single Bend Push Bar Set
- PP-2000: Offset Pull & Double Bend Push Bar Set
- PH-4000: Offset Door Pull
- PH-4000-2: Offset Door Pull Set



TB-4015 Threshold Bolt Kit

- For doors with cylinder height tip to 53-1/2", Threaded rod can be cut for cylinder heights lower than 53-1/2"
- CTC 9", 10" and 12
- Mounting Hardware Include



TB-4015

HB-4015-N - Special Header Bolt Set

- Standard for 84" Doors with Cylinder
- Heights of not less than 33"
- ER-4015-N Extension Rod Kit is available for 8'-9" Door Heights



HB-4015-N

HB-4080 Series Header Bolt Set

- HB-4085: For doors 30-1/2" to 50" from centerline of cylinder to top of door
- HB-4086: For doors 55-5/8" to 77-1/2" from centerline of cylinder to top of door
- HB-4087: For doors 67" to 89" from Centerline of cylinder to top of door



FB-1200 Series Flushbolt

- 15/16" x 4-1/4" Radius Face
- Positive "U" joint actuator with 5/8" throw
- 1/8", 3/16" and 1/4" offset with 7/8" backset
- Rod length for 12" Centerline of face installation
- Square Nylon Tip with beveled corners fits in 1/2" square hole



IP-1900 & 2200: Intermediate Pivot Set

- IP-1900 Series: Mortised
- IP-2200 Series: Slotted
- 3/4" Offset for use with Aluminum Doors and Frames
- For doors up to 125lbs.



IP-1900



IP-2200

Center Hung Pivots

- 400-PF: Mounting Holes Drilled & Tapped
- 400-PF1: Mounting Holes Drilled & Countersunk
- 400-PC: Dress Plate For 400-PF1
- 400-PD: Door Portion Top Pivot



400-PF

400-PD

400-PC

