



Please note that Cypress is an Infineon Technologies Company.

The document following this cover page is marked as “Cypress” document as this is the company that originally developed the product. Please note that Infineon will continue to offer the product to new and existing customers as part of the Infineon product portfolio.

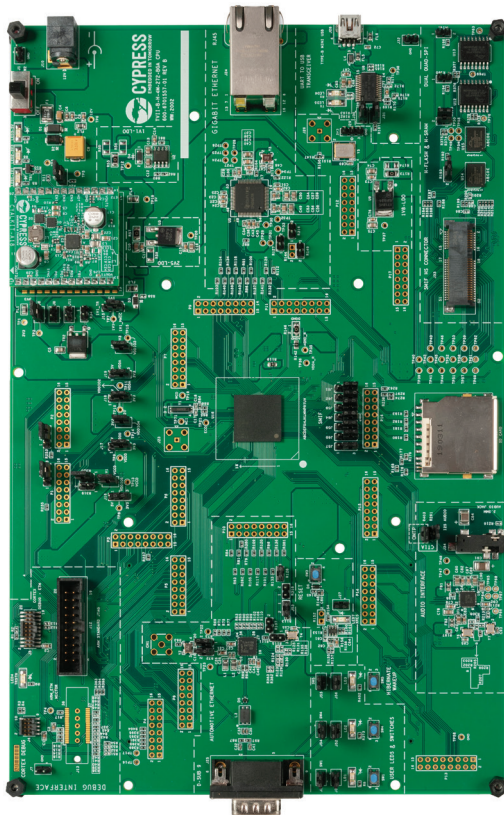
Continuity of document content

The fact that Infineon offers the following product as part of the Infineon product portfolio does not lead to any changes to this document. Future revisions will occur when appropriate, and any changes will be set out on the document history page.

Continuity of ordering part numbers

Infineon continues to support existing part numbers. Please continue to use the ordering part numbers listed in the datasheet for ordering.

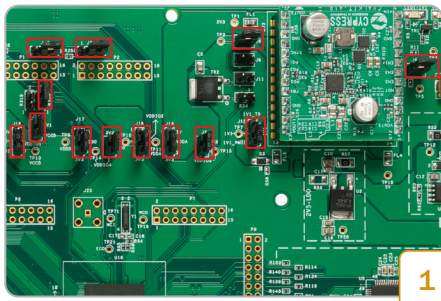
TRAVEO™ II CPU BOARD



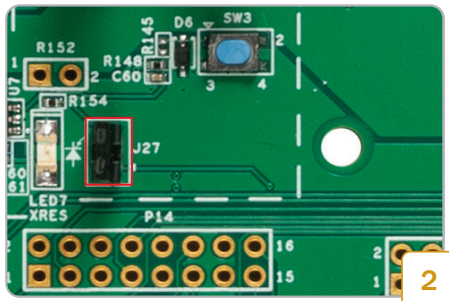
Kit Contents:

1. Traveo II CPU Board (CYT7II-B-H-4M-272-BGA CPU BOARD Rev. B)
2. Type-B Mini USB Cable
3. 1.2V AC-DC Universal Power Adapter
4. Quick Start Guide (this document)
5. Screws and Spacers

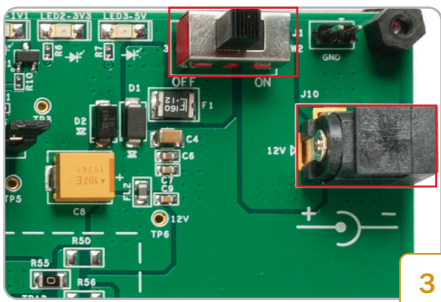
TRAVEO™ II CPU BOARD



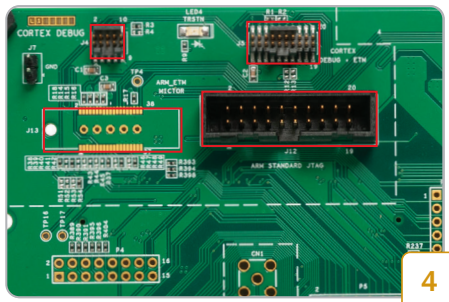
- Ensure that jumpers J14, J20, J21, J6, J9, and R320 are inserted. Jumpers J16, J17, J18, J19, J37, J22, and J15 should be in position 2-3.



- Ensure that the reset jumper (J27) is inserted.



- Connect the 12-V adapter to the J10 connector. Toggle the SW2 switch to ON position to power ON the board.



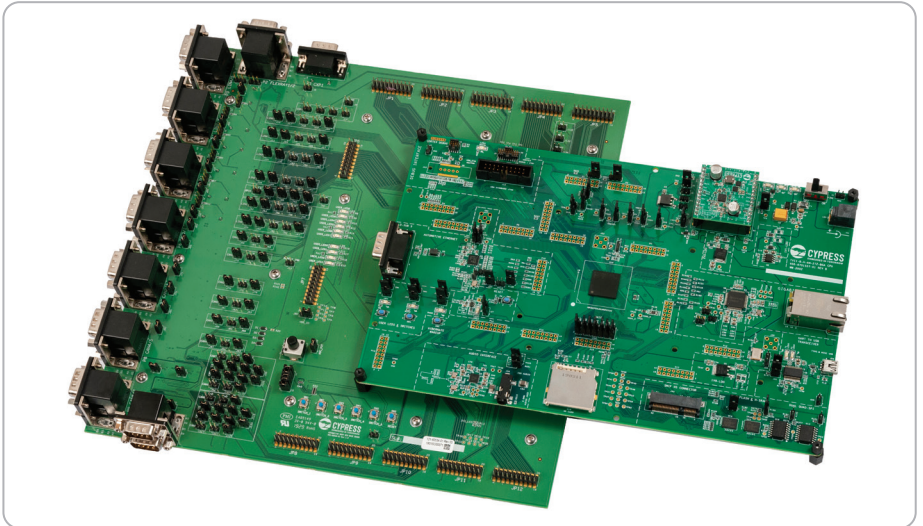
- Connect an appropriate programming tool (IAR/GHS) to one of the debugging interfaces: J4, J5, J12, J13.

Use an appropriate IDE on a PC to load the firmware SREC file into the device flash. The LED Blink Firmware is available in the release package.

TRAVEO™ II CPU BOARD

Instructions:

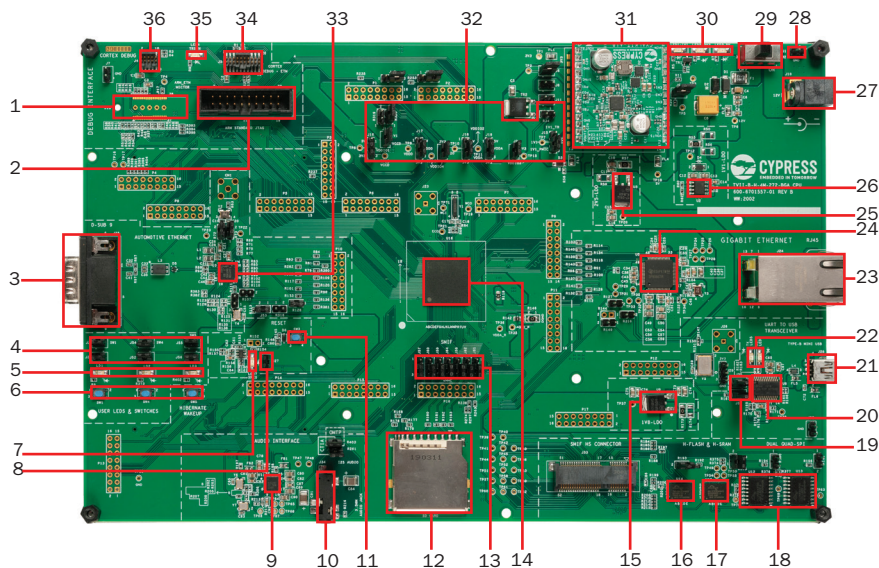
- Use the Traveo II CPU Board standalone to evaluate limited features of the Traveo II MCU.
- Use the board with the Body Controller Base Board to evaluate all the features of the MCU.



Please use the Cypress Customer Support Portal ([cypress.com/support](https://www.cypress.com/support)) to learn about Base Board compatibility and for the following:

- User Guide
- Schematic
- Sample Driver Library (SDL)
- Software Examples

TRAVEO™ II CPU BOARD



- | | |
|---|--|
| 1. J13 – Mictor-38 Arm® ETM Mictor Connector | 19. Rx and Tx Jumpers |
| 2. J12 – 20-Pin IDC – Arm Standard JTAG Connector | 20. U8 – Cypress USB-Serial Controller |
| 3. J25 – D-SUB 9 Automotive Ethernet Connector | 21. J28 – USB Type-B Mini Connector |
| 4. Jumpers for User Switch and LED | 22. UART Rx and Tx LEDs |
| 5. User LEDs | 23. U5 – RJ45 Gigabit Ethernet Connector |
| 6. User Switches | 24. Gigabit Ethernet Controller |
| 7. LED7 – MCU Reset LED | 25. U3 – 2.5V LDO |
| 8. J27 – MCU Reset Jumper | 26. U2 – 1.1V LDO |
| 9. U11 – Audio Codec | 27. J10 – Power Jack (12 V) |
| 10. J34 – Audio Jack | 28. J1 – Jumper for GND Probe |
| 11. SW3 – MCU Reset | 29. SW2 – Power Switch |
| 12. U10 – SD Card Connector | 30. Power LEDs |
| 13. SMIF/SDHC Jumpers | 31. Cypress PMIC |
| 14. U6 – Cypress TVII-B-H-4M MCU | 32. MCU Power Jumpers |
| 15. U9 – 1.8V LDO | 33. U4 – Automotive Ethernet Controller |
| 16. U14 – 64M HyperRAM™ | 34. J5 – MIPI-20-Cortex® Debug + ETM Connector |
| 17. U15 – 512M HyperFlash™ Memory | 35. LED4 – MCU TAP Controller Reset LED |
| 18. U12 & U13 – Quad SPI 256M Flash Memory | 36. J4 – MIPI-10-Cortex Debug Connector |