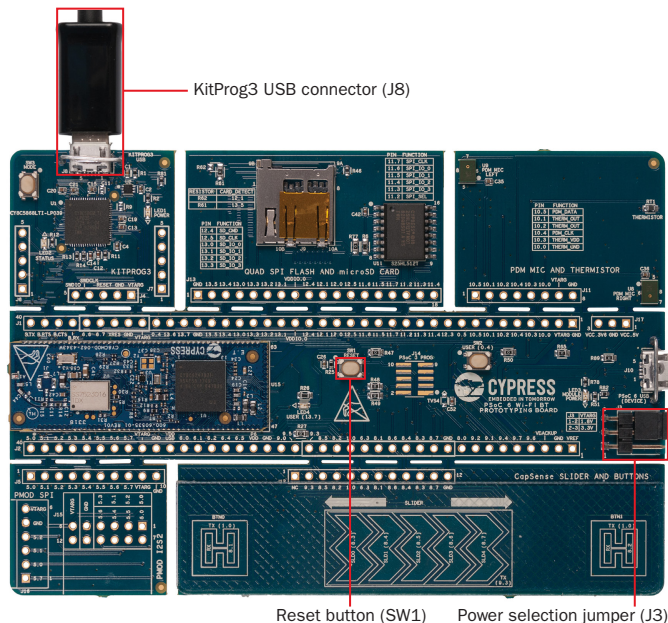


CY8CPROTO-062-4343W PS_oC[®] 6 Wi-Fi BT PROTOTYPING KIT QUICK START GUIDE

Before starting, ensure you have the following.

- PC with USB port and Wi-Fi connectivity
- UART terminal software such as Tera Term or Minicom
- Non-enterprise Wi-Fi network with internet access or a mobile hotspot

- 1) Visit the kit website to download and install the required software.
- 2) Ensure the jumper J3 is at position 2-3 to select 3.3V.
- 3) Connect the KitProg3 USB connector (J8) to your PC.
- 4) Wait for the drivers installation to complete.
- 5) Open the UART terminal software and connect to the KitProg3 USB-UART COM port with the settings – Baud rate: 115200, Data: 8 bit, Parity: None, Stop bit: 1 bit, Flow control: None.
- 6) Press the RESET switch (SW1) on the device.
- 7) Follow the instructions displayed on the UART terminal to use the pre-programmed code example.
Refer to the Kit Guide available at the kit website for details.



For more information, please visit: www.cypress.com/CY8CPROTO-062-4343W



PSoC Rocks!





CY8CPROTO-062-4343W PSoC® 6 Wi-Fi BT PROTOTYPING KIT



Contents under the label