

H4 LED Lighting System  
Gen2

HALO



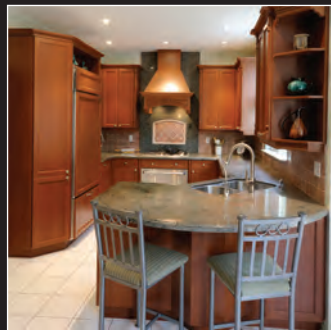
**Cooper Lighting**  
by **EAT•N**

**Innovation** you can rely on™



## **HALO® LED is a Natural Choice.**

The Halo LED H4 Collection offers small aperture 4-inch downlighting with the latest LED technology for accent, task and general lighting applications. The LED downlights deliver light output and distribution comparable to a halogen lamp, while offering significant energy and maintenance savings. The H4 LED series' efficient performance provides excellent cutoff, smooth beam distribution and superior color quality for better visual comfort. The LED downlights are available in multiple color temperature options and offer full dimming capability to satisfy more application needs in residential and commercial settings.



# Halo LED H4 Collection

## 4" LED Downlights



Qualified and compliant. Refer to ENERGY STAR® Qualified Products List and CEC (T24) Appliance Database for listings.

### A LED Housing



- 4" nominal aperture housings designed for H4 LED light engines, incorporating popular Halo customer-friendly installation features
- LED driver integrated in the housing for optimized lumen delivery and superior thermal management

### B LED Light Engine



- Specially designed heat sink conducts heat away from the LED to maintain LED junction temperatures even when installed in insulated ceiling environments.
- Correlated Color Temperature (CCT) options: 2700K, 3000K, 3500K, 4000K
- 90 CRI
- LED is a chip on board design consisting of a multiple LED package with proximity phosphor coating to create one virtual white light source for a productive cone of light
- Designed for interchangeable trim choices

### C LED Trim



- Available in multiple reflector and baffle styles with deep regressed dome lens or regressed Solite® flat lens models
- Selection includes square trims with square baffles
- Precision trim designs and materials provide high-quality fit, form and finish
- Wide selection of 4" LED trim options allow Halo H4 LED to be used in a variety of interior spaces

### Replaces Halogen and CFL lamps

Halo H4 LED downlights provide light output and distribution comparable to and exceeding that of traditional sources used in small aperture downlights, such as 50W MR16 (dichroic), 39W PAR20 Halogen, 39W R20 Halogen lamps, or 13W and 18W compact fluorescent luminaires. H4 LED provides excellent color rendering and superior optical design with smooth beam distribution.



50W MR16 (dichroic) Halogen reflector lamp



39W PAR20 Halogen (50W replacement) reflector lamp



39W R20 Halogen (50W replacement) reflector lamp



13W or 18W Compact Fluorescent Luminaire

# Halo LED H4 Collection Light Engines

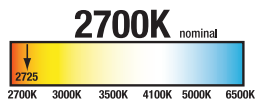
- LED package consists of a chip on board design of multiple LEDs to create one virtual source for a productive cone of light
- Specially designed LED and heat sink integration ensures extended life of the LED package for 70% lumen maintenance (L70 at 50,000 hours projected in accordance with IES TM-21)
- Heat sink features durable die-cast and extruded aluminum construction, which conducts heat away from the LED package and keeps LED junction temperatures at specified level
- LED emits no ultraviolet wave length, minimizing fading of fabrics, paint and artwork as compared to traditional light sources
- Uses 74% less energy, significantly reducing the heat emitted as compared to traditional light sources, which translates to reduced air conditioning costs
- Designed for interchangeable trim choices; select from multiple reflector, baffle and lens trim options



## Light Engine Performance

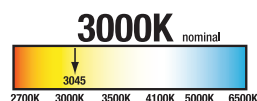
- 450-900 lumens depending upon color temperature and trim selected\*
- Correlated Color Temperature (CCT) options: 2700K, 3000K, 3500K, 4000K
- Less than 13 watts (driver is integral to housing)
- Over 90 CRI
- Lumen maintenance L70 at 50,000 hours projected per IES TM-21
- Up to 70 lumens per watt

\* Trim type and color temperature determines the delivered lumen value. Refer to specification sheets and photometric files at [www.cooperlighting.com](http://www.cooperlighting.com).



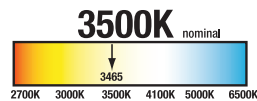
**Model Number**

EL406927



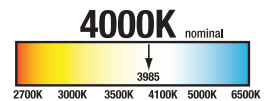
**Model Number**

EL406930



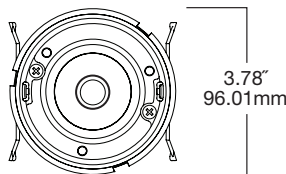
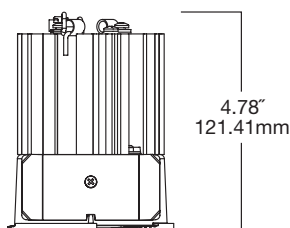
**Model Number**

EL406935



**Model Number**

EL406940



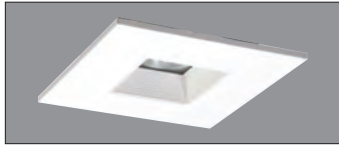
Qualified and compliant. Refer to ENERGY STAR® Qualified Products List and CEC (T24) Appliance Database for listings, (as used with designated Halo H4 LED trims).

# Halo LED H4 Collection

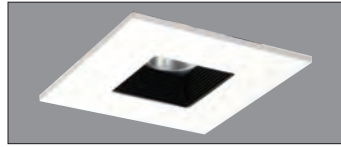
## Trims



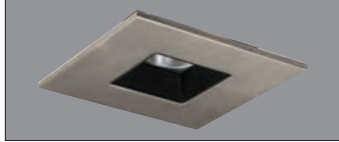
### 4" LED Square Downlight Baffle Trims



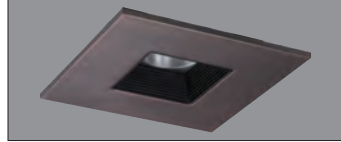
**TLS408WHWB** - Square baffle trim with Solite® regressed lens, white baffle, and white trim ring



**TLS408WHBB** - Square baffle trim with Solite® regressed lens, black baffle, and white trim ring

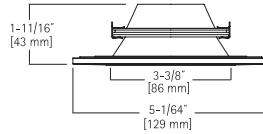


**TLS408SNBB** - Square baffle trim with Solite® regressed lens, black baffle, and satin nickel trim ring

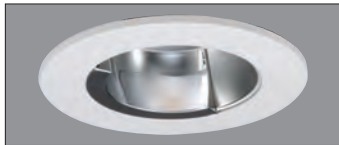


**TLS408TBZBB** - Square baffle trim with Solite® regressed lens, black baffle, and tuscan bronze trim ring

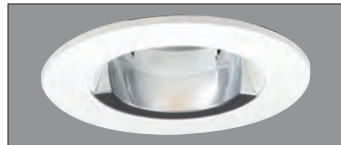
- Compatible with EL4 series (round) downlight light engines
- Consistent O.D. with Halo 4" family
- Square step baffle for controlled aperture brightness
- Regressed Solite® flat glass lens
- Wet Location, shower rated
- Precision-formed aluminum baffles and die-cast trim rings offer high-quality fit and finish
- Trim gasket provides AIR-TITE™ seal, and compliance where local codes require a gasket on wet location, shower-rated trims



### 4" LED Wall Wash Downlight Trims

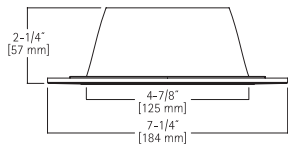


**TL409WW** - Semi-specular reflector with wall wash optic, diffusing lens, and white trim ring

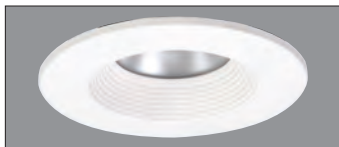


**TL409WHWW** - White reflector with wall wash optic, diffusing lens, and white trim ring

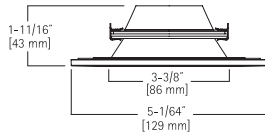
- Wall wash optics with downlight performance
- Two downlight reflector cone finish options: semi-specular clear and white
- Precision-formed aluminum reflectors and die-cast trim rings offer high-quality fit and finish
- High-reflectance vacuum-metalized specular wall wash kick reflector for high-angle vertical illumination
- Polymer diffusing dome lens for smooth distribution
- Compatible with EL4 Series downlight light engines
- Wet location, shower rated



### 4" LED Polymer "Dead Front" Shower Trim

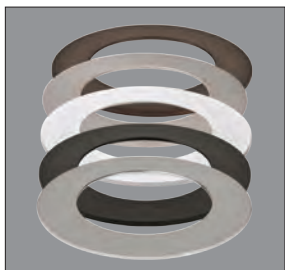


**TL422PS** - White polymer baffle and ring with prismatic clear polymer lens



- White polymer baffle and ring
- Prismatic, clear flat polymer lens
- Non-electrically conductive "dead front"
- Non-corrosive front
- Wet Location, shower rated

### 4" LED Designer Trim Rings



- For use with TL4x round downlight trims only
- Optional accessory
- Die-cast trim ring
- Thin profile provides subtle ceiling appearance (0.120" at OD and 0.180" at ID)

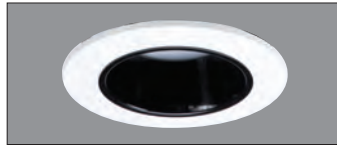
<b>TRM400PC</b>	Polished chrome
<b>TRM400BK</b>	Black
<b>TRM400WH</b>	White
<b>TRM400SN</b>	Satin nickel
<b>TRM400TBZ</b>	Tuscan bronze

## 4" LED Deep Regressed Dome Lens Reflector and Baffle Trims

- Dome lensed trims offer a polymer lens for a diffuse beam with even distribution
- Wet location, shower rated



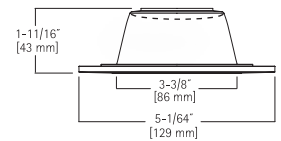
**TL410WH** - White reflector with white trim ring



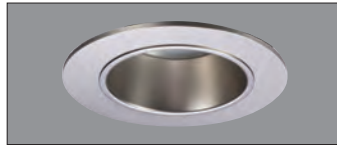
**TL410SBK** - Specular black reflector with white trim ring



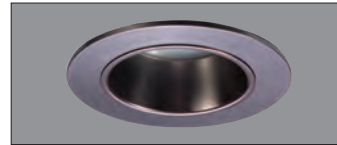
**TL410SC** - Specular clear reflector with white trim ring



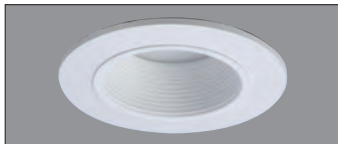
**TL410H** - Haze reflector with white trim ring



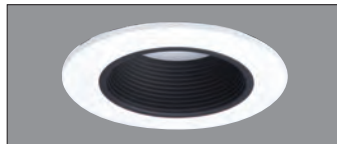
**TL410SN** - Satin nickel reflector and trim ring



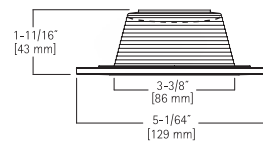
**TL410TBZ** - Tuscan bronze reflector and trim ring



**TL411WB** - White baffle with white trim ring

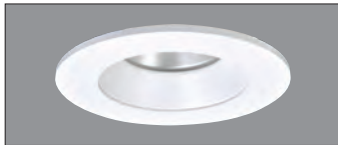


**TL411BB** - Black baffle with white trim ring

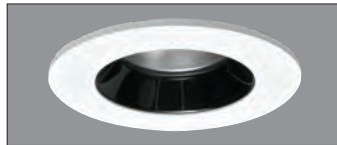


## 4" LED Solite® Regressed Flat Lens Reflector and Baffle Trims

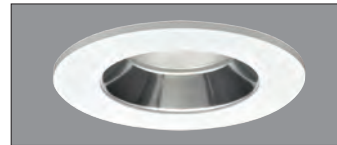
- Solite® lensed trims offer high-clarity glass lenses for high-lumen transmission along with a subtle diffusion of source brightness
- Wet location, shower rated



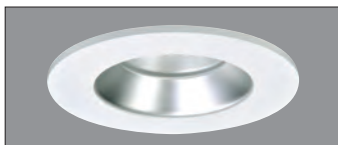
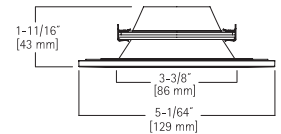
**TL402WHS** - White reflector with Solite® lens, and white trim ring



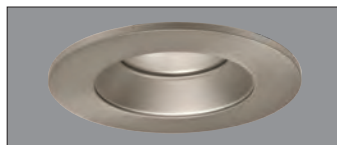
**TL402SBKS** - Specular black reflector with Solite® lens, and white trim ring



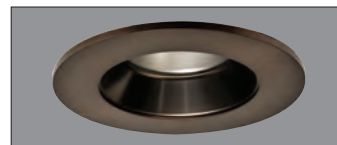
**TL402SCS** - Specular clear reflector with Solite® lens, and white trim ring



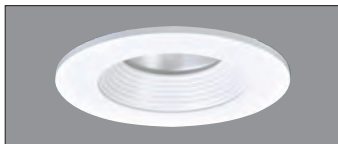
**TL402HS** - Haze reflector with Solite® lens, and white trim ring



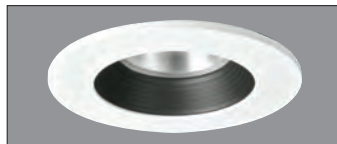
**TL402SNS** - Satin nickel reflector with Solite® lens, and satin nickel trim ring



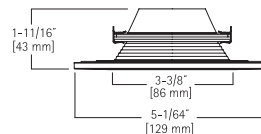
**TL402TBZS** - Tuscan bronze reflector with Solite® lens, and tuscan bronze trim ring



**TL403WBS** - White baffle with Solite® lens, and white trim ring



**TL403BBS** - Black baffle with Solite® lens, and white trim ring



### 4" Reflector and Baffle Trims Summary

- Trim designs and dimensions are consistent with Halo 4" series for a true 4" family
- Precision-formed aluminum reflectors and baffles and die-cast trim rings offer high-quality fit and finish
- Standard trim ring provides clearance for remodeler flange and gasket
- Trim gasket provides AIR-TITE™ seal and compliance where local codes require a gasket on wet location, shower-rated trims
- Accessory die-cast trim rings in designer finishes; mix and match with baffles and reflectors.

# Halo LED H4 Collection

## 4" LED Adjustable Gimbals



Qualified and compliant. Refer to ENERGY STAR® Qualified Products List and CEC (T24) Appliance Database for listings.

### A LED Housing



- 4" nominal aperture housings designed for H4 LED light engines, incorporating popular Halo customer-friendly installation features
- LED driver integrated in the housing for optimized lumen delivery and superior thermal management of the LED package

### B LED Adjustable Gimbal and Light Engine



- 4" round and square adjustable gimbal-style trims
- 4" LED gimbal trim is integrated with the LED light engine
- 35° tilt adjustment
- Correlated Color Temperature (CCT) options: 2700K, 3000K, 3500K, 4000K
- 90 CRI
- 25° beam reflector included with interchangeable 35° and 50° reflectors available
- Gimbal trim finish options: white, satin nickel and tuscan bronze
- Specially designed heat sink conducts heat away from the LED to maintain LED junction temperatures, even when installed in insulated ceiling housings.
- LED is a chip on board design consisting of a multiple LED package with proximity phosphor coating to create one virtual white light source for a productive cone of light





# Adjustable Gimbal and Light Engine

- 4" round and square gimbal style trims combined with LED light engine
- 35° tilt
- Optics are MR16-like with interchangeable reflectors with 25°, 35°, 50° beam
- 25° beam reflector included in all adjustable gimbal trims
- Optional reflector kit with 25°, 35°, 50° reflectors
- Correlated Color Temperatures (CCT) available: 2700K, 3000K, 3500K, 4000K
- Gimbal trim finishes include white, satin nickel and tuscan bronze
- Front-loading, snap-in media and reflector cover
- Front cover holds one lens media



## Optional Gimbal Reflector Kit - TL412RK

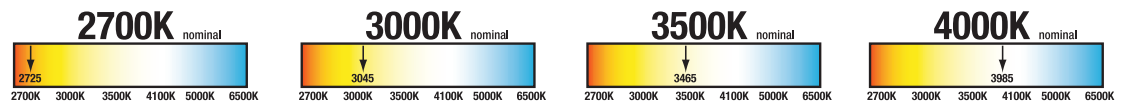
- 25° reflector
- 35° flood reflector
- 50° wide flood reflector



25° Reflector (Included)

35° Flood Reflector

50° Wide Flood Reflector



Style	Trim Finish	Model Number	Model Number	Model Number	Model Number
Round	White	ELG406927WH	ELG406930WH	ELG406935WH	ELG406940WH
	Satin nickel	ELG406927SN	ELG406930SN	ELG406935SN	ELG406940SN
	Tuscan bronze	ELG406927TBZ	ELG406930TBZ	ELG406935TBZ	ELG406940TBZ
Square	White	ELSG406927WH	ELSG406930WH	ELSG406935WH	ELSG406940WH
	Satin nickel	ELSG406927SN	ELSG406930SN	ELSG406935SN	ELSG406940SN
	Tuscan bronze	ELSG406927TBZ	ELSG406930TBZ	ELSG406935TBZ	ELSG406940TBZ

## Optional Lens Media (Order separately)

One lens media may be used in place of clear lens. For round and square gimbals.

### Optical Lenses

- L110 Diffuse sand blasted lens
- L111 Soft focus textured lens
- L113 Prismatic lens
- L115 Linear spread lens

### Dichroic Color Films

- L114 UV filter
- L120 Red
- L121 Amber
- L122 Yellow
- L123 Green
- L124 Daylight
- L125 Blue
- L127 Cosmetic color filters
- L130 Yellow

## Optional Accessory Reflector Kit

(Order separately)

TL412RK includes:

- 25° reflector (included)
- 35° reflector
- 50° reflector

TL412RK is for use with ELGxx and ELSGxx gimbals only.



White



Satin Nickel



Tuscan Bronze



Qualified and compliant. Refer to ENERGY STAR® Qualified Products List and CEC (T24) Appliance Database for listings.

# Halo LED H4 Collection

## Housings

- Available for insulated ceilings\* (ICAT) and non-insulated ceilings (TAT, TCP)
- ICAT and TAT designated housings are AIR-TITE™ in compliance with restricted airflow requirements per ASTM-E283 standard
- Include standard Halo features:
  - Got Nail™ Bar hangers with pre-installed nail and integral T-grid clip
  - Slide-N-Side™ wire traps and quick-connects for tool-less wiring outside the junction box
  - Pass-N-Thru™ bar hanger feature for tool-less shortening of bars without removal from frame
- LED driver integral in the housing for optimized lumen delivery and superior thermal management
- LED driver designed for high efficiency and long life - operating the LED package for over 50,000 hours
- Dimmable
  - ICAT housings are dimmable to 10% in normal operation with most 120V leading edge (LE) and trailing edge (TE) phase control dimmers. May also dim to 5% using dimmers with low-end trim adjustment. (Consult dimmer manufacturer.)
  - Non-IC housings have two dimming options: phase control and 0-10V control. Phase control is dimmable to 10% in normal operation with most 120V leading edge (LE) and trailing edge (TE) phase control dimmers. 0-10V is dimmable to 10% in typical operation with compatible 0-10V DC low voltage dimmers with two low voltage dimming wires. (Consult dimmer manufacturer.)
- Can be operated from a standard wall switch if dimming is not required
- Labels
  - cULus 1598 Listed Luminaire
  - cULus Listed for Damp Location, and wet location with designated trims
- ENERGY STAR® Qualified with designated Halo H4 LED light engines and H4 LED trims\*\*
- May be used to meet State of California Title 24 and International Energy Conservation Code – IECC High Efficacy requirements with designated Halo H4 LED light engines and H4 LED trims\*\*

## Energy Data / ICAT Housings

- Minimum operating temperature:
  - 30°C / -22°F
- EMI/RFI Emissions FCC 47CFR Part 18, Consumer Limits
- Sound rating: Class A standards
- Input voltage: 120V
- Power factor: >0.90
- Input frequency: 50/60Hz
- THD: <20%
- Input power: 13.0 W
- Input current: 121mA (120mA Remodel)
- Dimmable: Leading edge (LE) and trailing edge (TE) phase control dimmers



### H457ICAT1E

#### ICAT Rated / New Construction

- For direct contact with insulation in insulated ceilings.\*  
(May also be used in non-insulated ceilings.)
- AIR-TITE™ meets restricted airflow requirements per ASTM E-283
- Driver: 13W, 120V, 50/60Hz
- EMI/RFI: Rated for FCC Consumer Limits, suitable for residential and commercial applications
- Dimmable with most leading edge (LE) and trailing edge (TE) phase control dimmers to 10% (5% on select dimmers with low-end trim adjustment)
- Dimensions: 6"L x 8-1/2"W x 5-3/8"H (with 1/2" plaster lip) Ceiling cutout: 4-1/2"



### H457RICAT1E

#### ICAT Rated / Remodel

- Designed for installation from below the finished ceiling
- For direct contact with insulation in insulated ceilings.  
(May also be used in non-insulated ceilings.)
- AIR-TITE™ meets restricted airflow requirements per ASTM E-283
- Driver: 13W, 120V, 50/60Hz
- EMI/RFI: Rated for FCC Consumer Limits, suitable for residential and commercial applications
- Dimmable with most leading edge (LE) and trailing edge (TE) phase control dimmers to 10% (5% on select dimmers with low-end trim adjustment)
- Dimensions: 14-3/4"L x 5"W x 5-1/2"H - Ceiling cutout: 4-1/4"

\*ICAT housings are not for direct contact with spray foam insulation. Refer to NEMA LSD 57-2013.

\*\*Refer to ENERGY STAR® Qualified Products List and CEC (T24) Appliance Database for listings.

## Energy Data / Non-IC Housings

---

- Minimum operating temperature: -30°C / -22°F
- EMI/RFI Emissions FCC47CFR Part 18, Consumer Limits
- Sound rating: Class A standards

- Input voltage: universal 120V - 277V
- Power factor: >0.90
- Input frequency: 50/60Hz
- THD: <20%
- Input power: 13.0 W

- Input current: 121mA
- Dimmable:
  - 120V leading edge (LE) and trailing edge (TE) dimmers
  - 0-10V controls



### H457TATE010

#### Non-IC Rated / New Construction

---

- For non-insulated ceilings
- Insulation must be kept 3" from all sides and top of housing
- AIR-TITE™ meets restricted airflow requirements per ASTM E-283
- Driver: 13W, 120V-277V, 50/60Hz commercial / residential
- EMI/RFI: Rated for the more stringent FCC Consumer Limits
- Dimmable with most 120V leading edge (LE) and trailing edge (TE) dimmers to 10% (5% on dimmers with low-end trim adjustment)
- Dimmable to 10% with 0-10V DC dimming controls (two low voltage control wires required)
- Dimensions: 5-1/2"L x 8"W x 5-1/2"H (with 1/2" plaster lip) - Ceiling cutout: 4-1/2"



### H457TCPE010

#### Non-IC Rated / Chicago Plenum New Construction

---

- Non-IC rated, Chicago Plenum New Construction
- Insulation must be kept 3" from all sides and top of housing
- AIR-TITE™ meets restricted airflow requirements per ASTM E-283
- Driver: 13W, 120V-277V, 50/60Hz Commercial / Residential
- EMI/RFI: Rated for the more stringent FCC Consumer Limits
- Dimmable with most 120V leading edge (LE) and trailing edge (TE) dimmers to 10% (5% on dimmers with low-end trim adjustment)
- Dimmable to 10% with 0-10V DC dimming controls (two low voltage control wires required)
- Dimensions: 5-1/2"L x 8"W x 7-1/8"H (with 1/2" plaster lip) - Ceiling cutout: 4-1/2"



### H457RTATE010

#### Non-IC Rated / Remodel

---

- Designed for installation from below the finished ceiling
- For non-insulated ceilings
- Insulation must be kept 3" from all sides and top of housing
- AIR-TITE™ meets restricted airflow requirements per ASTM E-283
- Driver: 13W, 120V-277V, 50/60Hz commercial / residential
- EMI/RFI: Rated for the more stringent FCC Consumer Limits
- Dimmable with most 120V leading edge (LE) and trailing edge (TE) dimmers to 10% (5% on dimmers with low-end trim adjustment)
- Dimmable to 10% with 0-10V DC dimming controls (two low voltage control wires required)
- Dimensions: 14-3/4"L x 5"W x 5-1/2"H - Ceiling cutout: 4-1/4"

# Halo LED H4 Downlight Collection

## Photometry

### Halo H4 LED Downlight Photometry - 2nd Generation

H4 LED Downlight Collection		H4 LED Light Engine EL406927				H4 LED Light Engine EL406930				H4 LED Light Engine EL406935				H4 LED Light Engine EL406940			
Trim Type	Trim Model	LUMENS (1)	ENERGY STAR (2)	California T24 (3)	IECC & WSEC (4)	LUMENS (1)	ENERGY STAR (2)	California T24 (3)	IECC & WSEC (4)	LUMENS (1)	ENERGY STAR (2)	California T24 (3)	IECC & WSEC (4)	LUMENS (1)	ENERGY STAR (2)	California T24 (3)	IECC & WSEC (4)
Specular Reflector, Diffuse Polymer Lens	TL410SC	660	Yes	Yes	Yes	720	Yes	Yes	Yes	730	Yes	Yes	Yes	810	Yes	Yes	Yes
Haze Reflector, Diffuse Polymer Lens	TL410H	650	Yes	Yes	Yes	710	Yes	Yes	Yes	720	Yes	Yes	Yes	800	Yes	Yes	Yes
White Reflector, Diffuse Polymer Lens	TL410WH	630	Yes	Yes	Yes	690	Yes	Yes	Yes	700	Yes	Yes	Yes	770	Yes	Yes	Yes
Specular Black Reflector, Diffuse Polymer Lens	TL410SBK	460	No	No	No	500	No	No	No	510	No	No	No	560	Yes	No	Yes
Satin Nickel Reflector, Diffuse Polymer Lens	TL410SN	560	Yes	No	Yes	610	Yes	Yes	Yes	620	Yes	Yes	Yes	680	Yes	Yes	Yes
Tuscan Bronze Reflector, Diffuse Polymer Lens	TL410TBZ	450	No	No	No	500	No	No	No	510	No	No	No	560	Yes	No	Yes
White Baffle, Diffuse Polymer Lens	TL411WB	647	Yes	Yes	Yes	690	Yes	Yes	Yes	700	Yes	Yes	Yes	770	Yes	Yes	Yes
Black Baffle, Diffuse Polymer Lens	TL411BB	450	No	No	No	490	No	No	No	500	No	No	No	550	No	No	Yes
Solite® Glass Lens Specular Clear Reflector	TL402SCS	710	Yes	Yes	Yes	770	Yes	Yes	Yes	780	Yes	Yes	Yes	860	Yes	Yes	Yes
Solite® Glass Lens Haze Reflector	TL402HS	740	Yes	Yes	Yes	810	Yes	Yes	Yes	820	Yes	Yes	Yes	900	Yes	Yes	Yes
Solite® Glass Lens White Reflector	TL402WHS	710	Yes	Yes	Yes	780	Yes	Yes	Yes	790	Yes	Yes	Yes	870	Yes	Yes	Yes
Solite® Glass Lens White Baffle	TL403WBS	700	Yes	Yes	Yes	760	Yes	Yes	Yes	780	Yes	Yes	Yes	850	Yes	Yes	Yes
Solite® Glass Lens Specular Black Reflector	TL402SBKS	650	Yes	Yes	Yes	710	Yes	Yes	Yes	720	Yes	Yes	Yes	800	Yes	Yes	Yes
Solite® Glass Lens Satin Nickel Reflector	TL402SNS	660	Yes	Yes	Yes	720	Yes	Yes	Yes	730	Yes	Yes	Yes	800	Yes	Yes	Yes
Solite® Glass Lens Tuscan Bronze Reflector	TL402TBZS	630	Yes	Yes	Yes	690	Yes	Yes	Yes	700	Yes	Yes	Yes	770	Yes	Yes	Yes
Solite® Glass Lens Black Baffle	TL403BBS	630	Yes	Yes	Yes	690	Yes	Yes	Yes	700	Yes	Yes	Yes	770	Yes	Yes	Yes
Square Baffle Trim, Solite® Glass Lens, White Ring & White Baffle	TLS408WHWB	680	Yes	Yes	Yes	740	Yes	Yes	Yes	750	Yes	Yes	Yes	830	Yes	Yes	Yes
Square Baffle Trim, Solite® Glass Lens, White Ring & Black Baffle	TLS408WHBB	640	Yes	Yes	Yes	710	Yes	Yes	Yes	720	Yes	Yes	Yes	790	Yes	Yes	Yes
Square Baffle Trim, Solite® Glass Lens, Satin Nickel Ring & Black Baffle	TLS408SNBB	660	Yes	Yes	Yes	720	Yes	Yes	Yes	730	Yes	Yes	Yes	800	Yes	Yes	Yes
Square Baffle Trim, Solite® Glass Lens, Tuscan Bronze Ring & Black Baffle	TLS408TBZBB	630	Yes	Yes	Yes	690	Yes	Yes	Yes	700	Yes	Yes	Yes	770	Yes	Yes	Yes
Wall Wash, Semi-Specular Reflector with Diffuse Polymer Lens & White Ring	TL409WW	640	Yes	Yes	Yes	700	Yes	Yes	Yes	710	Yes	Yes	Yes	780	Yes	Yes	Yes
Wall Wash, White Reflector, with Diffuse Polymer Lens & White Ring	TL409WHWW	640	Yes	Yes	Yes	710	Yes	Yes	Yes	720	Yes	Yes	Yes	790	Yes	Yes	Yes
White Baffle Shower Trim, All Polymer: Lens, Baffle & Ring	TL422PS	680	Yes	Yes	Yes	750	Yes	Yes	Yes	760	Yes	Yes	Yes	840	Yes	Yes	Yes

(1) Trims are tested with designated LED light engines, in accordance with IES LM-79 Photometric Measurement Standards. Field results may vary.

(2) Tested and qualified to ENERGY STAR® standards, consult the ENERGY STAR® Qualified Products List

(3) May be used for California Title 24 compliance, and registered with State of California; consult the CEC Title 20 Appliance Database

(4) May be used for IECC - International Energy Conservation Code and WSEC - Washington State Energy Code

# Halo LED H4 Collection

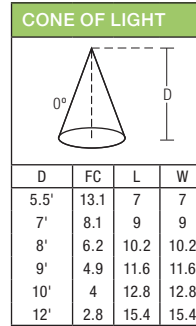
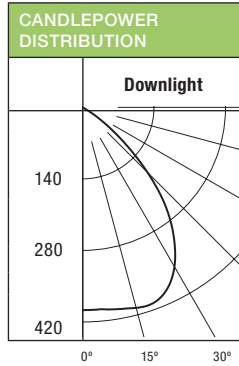
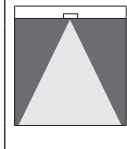
## Photometry

### Halo H4 LED Downlight Photometry - 2nd Generation

Representative photometric test report for 3000°K color temperature, 90CRI. Multipliers may be used to determine relative lumen values with other color temperatures

Correlated Color Temperature (CCT) as tested: 3000°K				
Color Temperature	2700°K	3000°K	3500°K	4000°K
Multiplier	0.913	1.000	1.014	1.118

EL406930-TL410SC	
Test Number	P123670
LED Module	EL406930
Trim	4" Specular Clear Reflector, Polycarbonate Frost Dome Lens, White Ring
Lumens	55.4 Lm/W
SC	1.29 / 1.29 / 1.25



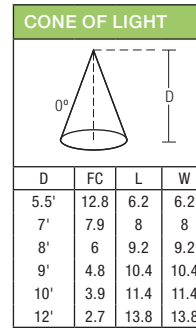
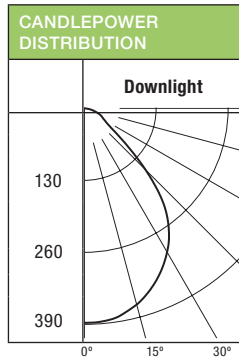
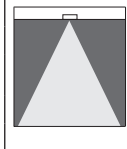
**LUMINANCE DATA**

Angle	0°
45	41329
55	14297
65	1601
75	685
85	0

**ZONAL LUMEN SUMMARY**

Zone	Lumens	%Fixture
0-30	333	46.2
0-40	527	73.2
0-60	714	99.2
0-90	720	100.0
90-180	0	0.0
0-180	720	100.0

EL406930-TL411WB	
Test Number	P123690
LED Module	EL406930
Trim	4" White Baffle, Polycarbonate Frost Dome Lens, White Ring
Lumens	53.1 Lm/W
SC	1.16 / 1.16 / 1.2



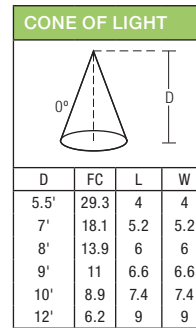
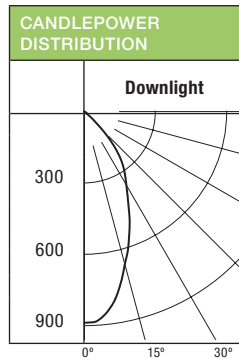
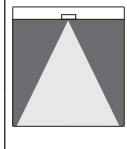
**LUMINANCE DATA**

Angle	0°
45	48625
55	21600
65	18264
75	16267
85	10819

**ZONAL LUMEN SUMMARY**

Zone	Lumens	%Fixture
0-30	290	42.0
0-40	455	66.0
0-60	630	91.3
0-90	690	100.0
90-180	0	0.0
0-180	690	100.0

EL406930-TL402SCS	
Test Number	P123702
LED Module	EL406930
Trim	4" Specular Clear Reflector w/ Solite® Glass Lens, White Ring
Lumens	59.2 Lm/W
SC	0.75 / 0.75 / 0.84



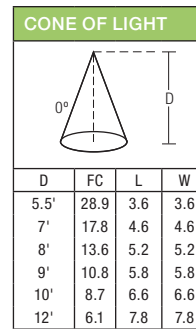
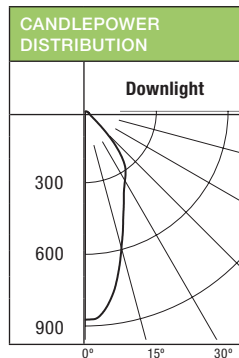
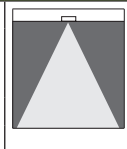
**LUMINANCE DATA**

Angle	0°
45	25791
55	4747
65	3240
75	0
85	0

**ZONAL LUMEN SUMMARY**

Zone	Lumens	%Fixture
0-30	472	61.3
0-40	652	84.7
0-60	760	98.7
0-90	770	100.0
90-180	0	0.0
0-180	770	100.0

EL406930-TL403WBS	
Test Number	P123714
LED Module	EL406930
Trim	4" White Baffle w/ Solite® Glass Lens, White Ring
Lumens	58.5 Lm/W
SC	0.66 / 0.66 / 0.82



**LUMINANCE DATA**

Angle	0°
45	28616
55	8005
65	6824
75	3921
85	2033

**ZONAL LUMEN SUMMARY**

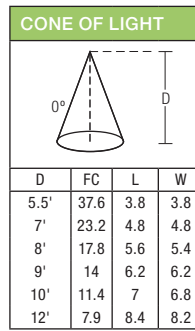
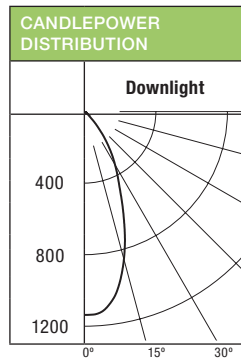
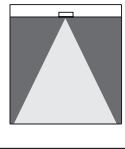
Zone	Lumens	%Fixture
0-30	424	55.8
0-40	606	79.7
0-60	733	96.4
0-90	760	100.0
90-180	0	0.0
0-180	760	100.0

# Halo LED H4 Collection

## Photometry

### Halo H4 LED Downlight Photometry - 2nd Generation

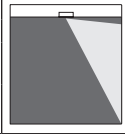
EL406930-TLS408WHWB	
Test Number	P123750
LED Module	EL406930
Trim	4" Square Baffle Trim, Solite Lens, White Ring with White Baffle
Lumens	56.9 Lm/W
SC	0.71 / 0.69 / 0.73



LUMINANCE DATA	
Angle	0°
45	16824
55	9999
65	11645
75	6288
85	4891

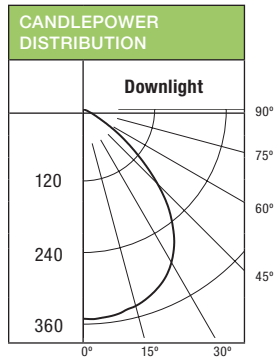
ZONAL LUMEN SUMMARY		
Zone	Lumens	%Fixture
0-30	554	74.9
0-40	676	91.3
0-60	726	98.1
0-90	740	100.0
90-180	0	0.0
0-180	740	100.0

EL406930-TL409WW	
Test Number	P123730
Light Module	EL406930
Trim	4" Wall Wash, Semi-Specular Clear Reflector, White Ring
Lumens	53.8 Lm/W
SC	1.19 / 1.24 / 1.22



SINGLE UNIT FOOTCANDLES							
2.5' FROM WALL (Distance From Fixture Along Wall)							
DD	●	1'	2'	3'	4'	5'	6'
1'	8.1	5.6	2.2	0.7	0.2	0.1	0
2'	14.9	12.3	6.9	3.1	1.3	0.5	0.2
3'	9.7	8.5	5.9	3.8	2	0.9	0.4
4'	6.2	5.7	4.4	3	1.9	1.2	0.6
5'	4	3.8	3.1	2.4	1.6	1.1	0.7
6'	2.7	2.6	2.2	1.8	1.4	1	0.7
7'	1.9	1.8	1.6	1.4	1.1	0.8	0.6
8'	1.3	1.3	1.2	1	0.9	0.7	0.5
9'	1	0.9	0.9	0.8	0.7	0.6	0.5
10'	0.7	0.7	0.7	0.6	0.6	0.5	0.4

MULTIPLE UNIT FOOTCANDLES							
2.5' FROM WALL (Spacing Between Fixtures)							
DD	--3'--				--4'--		
1'	8.9	7.5	8.9	8.4	4.4	8.4	
2'	18	19.5	18	16.1	13.9	16.1	
3'	13.5	14.5	13.5	11.7	11.9	11.7	
4'	9.2	10.1	9.2	8.1	8.8	8.1	
5'	6.4	7	6.4	5.7	6.2	5.7	
6'	4.5	4.8	4.5	4	4.4	4	
7'	3.2	3.4	3.2	2.9	3.2	2.9	
8'	2.4	2.5	2.4	2.2	2.4	2.2	
9'	1.8	1.8	1.8	1.7	1.8	1.7	
10'	1.4	1.4	1.4	1.3	1.4	1.3	



LUMINANCE DATA	
Angle	0°
45	48255
55	51372
65	33851
75	13321
85	3882

ZONAL LUMEN SUMMARY		
Zone	Lumens	%Fixture
0-30	271	38.7
0-40	428	61.1
0-60	645	92.2
0-90	700	100.0
90-180	0	0.0
0-180	700	100.0

# Halo LED H4 Directional Gimbal Collection

## Photometry

### Halo H4 LED Directional Gimbal Photometry - 2nd Generation

H4 LED Adjustable Round & Square Gimbal Collection		H4 LED Gimbal ELG406927 & ELSG406927				H4 LED Gimbal ELG406930 & ELSG406930				H4 LED Gimbal ELG406935 & ELSG406935				H4 LED Gimbal ELG406940 & ELSG406940			
Trim Type	Trim Model	LUMENS (1)	ENERGY STAR (2)	California T24 (3)	IECC & WSEC (4)	LUMENS (1)	ENERGY STAR (2)	California T24 (3)	IECC & WSEC (4)	LUMENS (1)	ENERGY STAR (2)	California T24 (3)	IECC & WSEC (4)	LUMENS (1)	ENERGY STAR (2)	California T24 (3)	IECC & WSEC (4)
4" Adjustable Gimbal Trim / Light Engine, White	ELG4069xxWH	750	Yes	Yes	Yes	840	Yes	Yes	Yes	880	Yes	Yes	Yes	930	Yes	Yes	Yes
4" Adjustable Gimbal Trim / Light Engine, Satin Nickel & Tuscan Bronze	ELG4069xxSN/TBZ	700	Yes	Yes	Yes	790	Yes	Yes	Yes	830	Yes	Yes	Yes	880	Yes	Yes	Yes

- (1) Adjustable gimbal trims are tested with the included 25 degree beam reflector, in accordance with IES LM-79 Photometric Measurement Standards measured at Nadir. Field results may vary.
- (2) Tested and qualified to ENERGY STAR® standards, consult the ENERGY STAR® Qualified Products List
- (3) May be used for California Title 24 compliance, and registered with State of California; consult the CEC Title 20 Appliance Database
- (4) May be used for IECC - International Energy Conservation Code and WSEC - Washington State Energy Code

- Gimbal Finish Codes
- WH = White
  - SN = Satin Nickel
  - TBZ = Tuscan Bronze

# Halo LED H4 Directional Gimbal Collection

## Photometry

### Halo H4 LED Directional Gimbal Photometry - 2nd Generation (2700K)

**ELG406927WH (White) - (25° BEAM - 0° TILT)**

Test Number	P123766
LED Module	ELG406927
Trim	4" Round gimbal / LED light engine
Lumens	57.7 Lm/W
CCT	2700K
SC	0.5 / 0.5 / 0.56

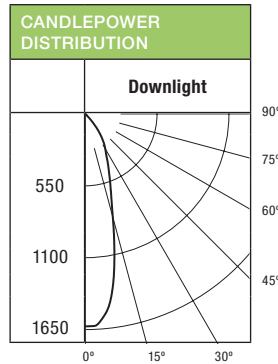


**LUMINANCE DATA**

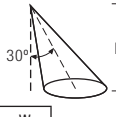
Angle	0°
45	21865
55	7229
65	1742
75	1497
85	4446

**ZONAL LUMEN SUMMARY**

Zone	Lumens	%Fixture
0-30	561	74.8
0-40	696	92.9
0-60	746	99.5
0-90	750	100.0
90-180	0	0.0
0-180	750	100.0

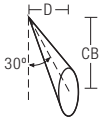


**0° HORIZONTAL PLANE**



D	FC	L	W
5.5'	53.7	2.6	2.6
7'	33.2	3.4	3.4
8'	25.4	4	4
9'	20.1	4.4	4.4
10'	16.3	5	5
12'	11.3	6	6

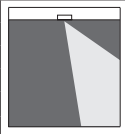
**30° VERTICAL PLANE**



D	FC	L	W	CB
2'	83.7	2.7	1.4	3.5
3'	37.2	4.1	2.2	5.2
4'	20.9	5.6	3	6.9
5'	13.4	7	3.8	8.7
6'	9.3	8.4	4.6	10.4
8'	5.2	11.2	6.2	13.9
10'	3.3	14	7.6	17.3
12'	2.3	16.9	9.2	20.8

**ELG406927WH (White) - (35° BEAM - 0° TILT)**

Test Number	P123790
LED Module	ELG406927
Trim	4" Round gimbal / LED light engine
Lumens	56.2 Lm/W
CCT	2700K
SC	0.64 / 0.64 / 0.62

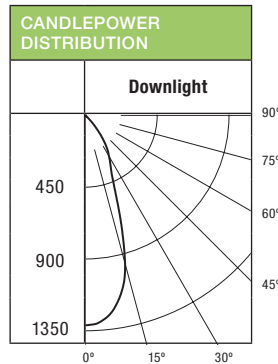


**LUMINANCE DATA**

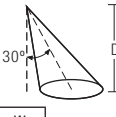
Angle	0°
45	19728
55	3310
65	1742
75	0
85	4446

**ZONAL LUMEN SUMMARY**

Zone	Lumens	%Fixture
0-30	559	76.6
0-40	690	94.5
0-60	728	99.7
0-90	730	100.0
90-180	0	0.0
0-180	730	100.0

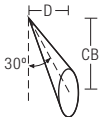


**0° HORIZONTAL PLANE**



D	FC	L	W
5.5'	43.5	3.4	3.4
7'	26.9	4.4	4.4
8'	20.6	5	5
9'	16.3	5.6	5.6
10'	13.2	6.2	6.2
12'	9.1	7.6	7.6

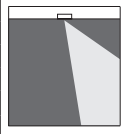
**30° VERTICAL PLANE**



D	FC	L	W	CB
2'	85.1	2.4	1.6	3.5
3'	37.8	3.6	2.6	5.2
4'	21.3	4.8	3.4	6.9
5'	13.6	6	4.2	8.7
6'	9.5	7.2	5.2	10.4
8'	5.3	9.6	7	13.9
10'	3.4	12	8.6	17.3
12'	2.4	14.4	10.4	20.8

**ELG406927WH (White) - (50° BEAM - 0° TILT)**

Test Number	P123814
LED Module	ELG406927
Trim	4" Round gimbal / LED light engine
Lumens	55.4 Lm/W
CCT	2700K
SC	0.88 / 0.89 / 0.82

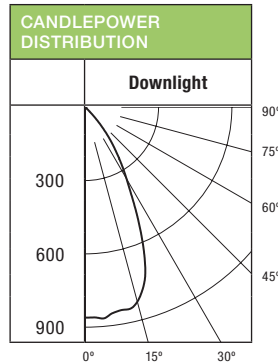


**LUMINANCE DATA**

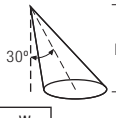
Angle	0°
45	22398
55	2495
65	2218
75	0
85	0

**ZONAL LUMEN SUMMARY**

Zone	Lumens	%Fixture
0-30	545	75.7
0-40	682	94.8
0-60	718	99.7
0-90	720	100.0
90-180	0	0.0
0-180	720	100.0

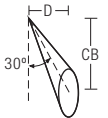


**0° HORIZONTAL PLANE**



D	FC	L	W
5.5'	28.5	4.8	4.8
7'	17.6	6	6.2
8'	13.5	7	7
9'	10.6	7.8	7.8
10'	8.6	8.8	8.8
12'	6	10.6	10.6

**35° VERTICAL PLANE**



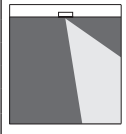
D	FC	L	W	CB
2'	81.1	1.8	2	3.5
3'	36.1	2.8	3	5.2
4'	20.3	3.8	4	6.9
5'	13	4.7	5	8.7
6'	9	5.7	6	10.4
8'	5.1	7.6	8	13.9
10'	3.2	9.6	10	17.3
12'	2.3	11.5	12	20.8

# Halo LED H4 Directional Gimbal Collection

## Photometry

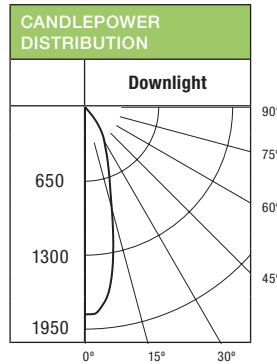
### Halo H4 LED Directional Gimbal Photometry - 2nd Generation (3000K)

ELG406930WH (White) - (25° BEAM - 0° TILT)	
Test Number	P123767
LED Module	ELG406930
Trim	4" Round gimbal / LED light engine
Lumens	64.6 Lm/W
CCT	3000K
SC	0.5 / 0.5 / 0.56



LUMINANCE DATA	
Angle	0°
45	24496
55	8107
65	2017
75	1647
85	4891

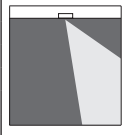
ZONAL LUMEN SUMMARY		
Zone	Lumens	%Fixture
0-30	628	74.8
0-40	780	92.9
0-60	835	99.5
0-90	840	100.0
90-180	0	0.0
0-180	840	100.0



0° HORIZONTAL PLANE				
D	FC	L	W	
5.5'	60.2	2.6	2.6	
7'	37.1	3.4	3.4	
8'	28.4	4	4	
9'	22.5	4.4	4.4	
10'	18.2	5	5	
12'	12.6	6	6	

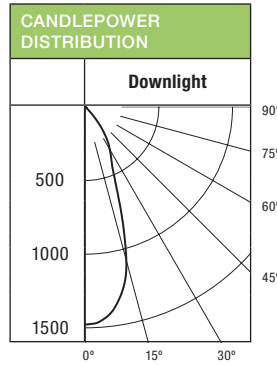
30° VERTICAL PLANE				
D	FC	L	W	CB
2'	93.8	2.7	1.4	3.5
3'	41.7	4.1	2.2	5.2
4'	23.4	5.6	3	6.9
5'	15	7	3.8	8.7
6'	10.4	8.4	4.6	10.4
8'	5.9	11.2	6.2	13.9
10'	3.8	14	7.6	17.3
12'	2.6	16.9	9.2	20.8

ELG406930WH (White) - (35° BEAM - 0° TILT)	
Test Number	P123791
LED Module	ELG406930
Trim	4" Round gimbal / LED light engine
Lumens	63.1 Lm/W
CCT	3000K
SC	0.64 / 0.64 / 0.62



LUMINANCE DATA	
Angle	0°
45	22139
55	3716
65	2017
75	0
85	4891

ZONAL LUMEN SUMMARY		
Zone	Lumens	%Fixture
0-30	628	76.6
0-40	775	94.5
0-60	817	99.7
0-90	820	100.0
90-180	0	0.0
0-180	820	100.0



0° HORIZONTAL PLANE				
D	FC	L	W	
5.5'	48.9	3.4	3.4	
7'	30.2	4.4	4.4	
8'	23.1	5	5	
9'	18.3	5.6	5.6	
10'	14.8	6.2	6.2	
12'	10.3	7.6	7.6	

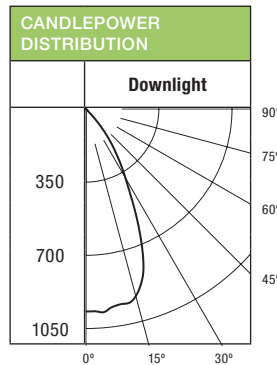
30° VERTICAL PLANE				
D	FC	L	W	CB
2'	95.5	2.4	1.6	3.5
3'	42.5	3.6	2.6	5.2
4'	23.9	4.8	3.4	6.9
5'	15.3	6	4.2	8.7
6'	10.6	7.2	5.2	10.4
8'	6	9.6	7	13.9
10'	3.8	12	8.6	17.3
12'	2.7	14.4	10.4	20.8

ELG406930WH (White) - (50° BEAM - 0° TILT)	
Test Number	P123815
LED Module	ELG406930
Trim	4" Round gimbal / LED light engine
Lumens	62.3 Lm/W
CCT	3000K
SC	0.88 / 0.89 / 0.82



LUMINANCE DATA	
Angle	0°
45	25189
55	2839
65	2568
75	0
85	0

ZONAL LUMEN SUMMARY		
Zone	Lumens	%Fixture
0-30	613	75.7
0-40	768	94.7
0-60	808	99.7
0-90	810	100.0
90-180	0	0.0
0-180	810	100.0



0° HORIZONTAL PLANE				
D	FC	L	W	
5.5'	32	4.8	4.8	
7'	19.8	6	6.2	
8'	15.1	7	7	
9'	12	7.8	7.8	
10'	9.7	8.8	8.8	
12'	6.7	10.6	10.6	

35° VERTICAL PLANE				
D	FC	L	W	CB
2'	91.3	1.8	2	3.5
3'	40.6	2.8	3	5.2
4'	22.8	3.8	4	6.9
5'	14.6	4.7	5	8.7
6'	10.1	5.7	6	10.4
8'	5.7	7.6	8	13.9
10'	3.7	9.6	10	17.3
12'	2.5	11.5	12	20.8



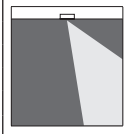
# Halo LED H4 Directional Gimbal Collection

## Photometry

### Halo H4 LED Directional Gimbal Photometry - 2nd Generation (3500K)

**ELG406935WH (White) - (25° BEAM - 0° TILT)**

Test Number P123768  
 LED Module ELG406935  
 Trim 4" Round gimbal / LED light engine  
 Lumens 67.7 Lm/W  
 CCT 3500K  
 SC 0.5 / 0.5 / 0.56

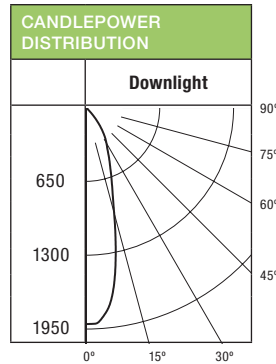


**LUMINANCE DATA**

Angle	0°
45	25702
55	8512
65	2109
75	1647
85	4891

**ZONAL LUMEN SUMMARY**

Zone	Lumens	%Fixture
0-30	658	74.8
0-40	817	92.9
0-60	875	99.5
0-90	880	100.0
90-180	0	0.0
0-180	880	100.0



**0° HORIZONTAL PLANE**

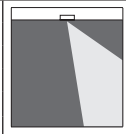
D	FC	L	W
5.5'	63	2.6	2.6
7'	38.9	3.4	3.4
8'	29.8	4	4
9'	23.5	4.4	4.4
10'	19.1	5	5
12'	13.2	6	6

**30° VERTICAL PLANE**

D	FC	L	W	CB
2'	98.2	2.7	1.4	3.5
3'	43.7	4.1	2.2	5.2
4'	24.6	5.6	3	6.9
5'	15.7	7	3.8	8.7
6'	10.9	8.4	4.6	10.4
8'	6.1	11.2	6.2	13.9
10'	3.9	14	7.6	17.3
12'	2.7	16.9	9.2	20.8

**ELG406935WH (White) - (35° BEAM - 0° TILT)**

Test Number P123792  
 LED Module ELG406935  
 Trim 4" Round gimbal / LED light engine  
 Lumens 66.2 Lm/W  
 CCT 3500K  
 SC 0.64 / 0.64 / 0.62

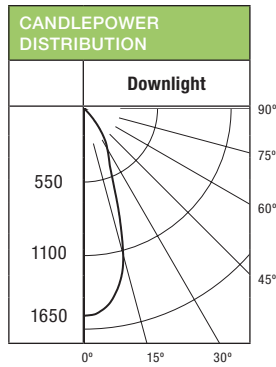


**LUMINANCE DATA**

Angle	0°
45	23235
55	3851
65	2109
75	0
85	4891

**ZONAL LUMEN SUMMARY**

Zone	Lumens	%Fixture
0-30	659	76.6
0-40	813	94.5
0-60	857	99.7
0-90	860	100.0
90-180	0	0.0
0-180	860	100.0



**0° HORIZONTAL PLANE**

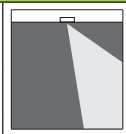
D	FC	L	W
5.5'	51.3	3.4	3.4
7'	31.7	4.4	4.4
8'	24.2	5	5
9'	19.1	5.6	5.6
10'	15.5	6.2	6.2
12'	10.8	7.6	7.6

**30° VERTICAL PLANE**

D	FC	L	W	CB
2'	100.2	2.4	1.6	3.5
3'	44.5	3.6	2.6	5.2
4'	25	4.8	3.4	6.9
5'	16	6	4.2	8.7
6'	11.1	7.2	5.2	10.4
8'	6.3	9.6	7	13.9
10'	4	12	8.6	17.3
12'	2.8	14.4	10.4	20.8

**ELG406935WH (White) - (50° BEAM - 0° TILT)**

Test Number P123816  
 LED Module ELG406935  
 Trim 4" Round gimbal / LED light engine  
 Lumens 65.4 Lm/W  
 CCT 3500K  
 SC 0.88 / 0.89 / 0.82

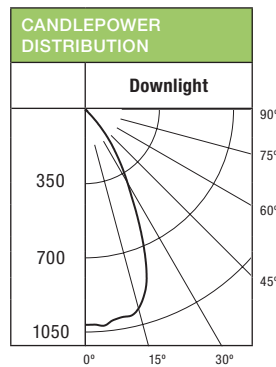


**LUMINANCE DATA**

Angle	0°
45	26375
55	2925
65	2685
75	0
85	0

**ZONAL LUMEN SUMMARY**

Zone	Lumens	%Fixture
0-30	644	75.7
0-40	805	94.8
0-60	848	99.7
0-90	850	100.0
90-180	0	0.0
0-180	850	100.0



**0° HORIZONTAL PLANE**

D	FC	L	W
5.5'	33.6	4.8	4.8
7'	20.8	6	6.2
8'	15.9	7	7
9'	12.6	7.8	7.8
10'	10.2	8.8	8.8
12'	7.1	10.6	10.6

**35° VERTICAL PLANE**

D	FC	L	W	CB
2'	95.8	1.8	2	3.5
3'	42.6	2.8	3	5.2
4'	23.9	3.8	4	6.9
5'	15.3	4.7	5	8.7
6'	10.6	5.7	6	10.4
8'	6	7.6	8	13.9
10'	3.8	9.6	10	17.3
12'	2.7	11.5	12	20.8

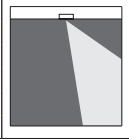
# Halo LED H4 Directional Gimbal Collection

## Photometry

### Halo H4 LED Directional Gimbal Photometry - 2nd Generation (4000K)

**ELG406940WH (White) - (25° BEAM - 0° TILT)**

Test Number P123769  
 LED Module ELG406940  
 Trim 4" Round gimbal / LED light engine  
 Lumens 71.5 Lm/W  
 CCT 4000K  
 SC 0.5 / 0.5 / 0.56

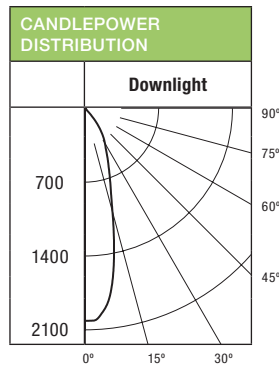


**LUMINANCE DATA**

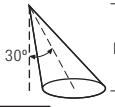
Angle	0°
45	27126
55	8985
65	2201
75	1797
85	5335

**ZONAL LUMEN SUMMARY**

Zone	Lumens	%Fixture
0-30	696	74.8
0-40	864	92.9
0-60	925	99.5
0-90	930	100.0
90-180	0	0.0
0-180	930	100.0

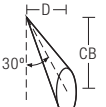


**0° HORIZONTAL PLANE**



D	FC	L	W
5.5'	66.6	2.6	2.6
7'	41.1	3.4	3.4
8'	31.5	4	4
9'	24.9	4.4	4.4
10'	20.2	5	5
12'	14	6	6

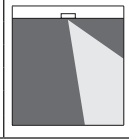
**30° VERTICAL PLANE**



D	FC	L	W	CB
2'	103.8	2.7	1.4	3.5
3'	46.1	4.1	2.2	5.2
4'	26	5.6	3	6.9
5'	16.6	7	3.8	8.7
6'	11.5	8.4	4.6	10.4
8'	6.5	11.2	6.2	13.9
10'	4.2	14	7.6	17.3
12'	2.9	16.9	9.2	20.8

**ELG406940WH (White) - (35° BEAM - 0° TILT)**

Test Number P123793  
 LED Module ELG406940  
 Trim 4" Round gimbal / LED light engine  
 Lumens 70 Lm/W  
 CCT 4000K  
 SC 0.64 / 0.64 / 0.62

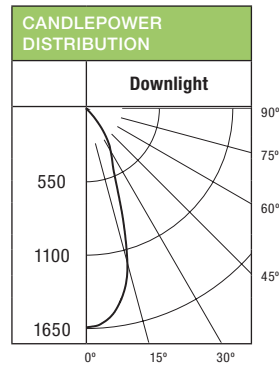


**LUMINANCE DATA**

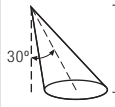
Angle	0°
45	24606
55	4121
65	2201
75	0
85	5335

**ZONAL LUMEN SUMMARY**

Zone	Lumens	%Fixture
0-30	697	76.6
0-40	860	94.5
0-60	907	99.7
0-90	910	100.0
90-180	0	0.0
0-180	910	100.0

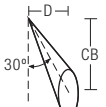


**0° HORIZONTAL PLANE**



D	FC	L	W
5.5'	54.2	3.4	3.4
7'	33.5	4.4	4.4
8'	25.6	5	5
9'	20.3	5.6	5.6
10'	16.4	6.2	6.2
12'	11.4	7.6	7.6

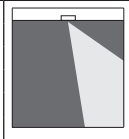
**30° VERTICAL PLANE**



D	FC	L	W	CB
2'	106	2.4	1.6	3.5
3'	47.1	3.6	2.6	5.2
4'	26.5	4.8	3.4	6.9
5'	17	6	4.2	8.7
6'	11.8	7.2	5.2	10.4
8'	6.6	9.6	7	13.9
10'	4.2	12	8.6	17.3
12'	2.9	14.4	10.4	20.8

**ELG406940WH (White) - (50° BEAM - 0° TILT)**

Test Number P123817  
 LED Module ELG406940  
 Trim 4" Round gimbal / LED light engine  
 Lumens 69.2 Lm/W  
 CCT 4000K  
 SC 0.88 / 0.89 / 0.82

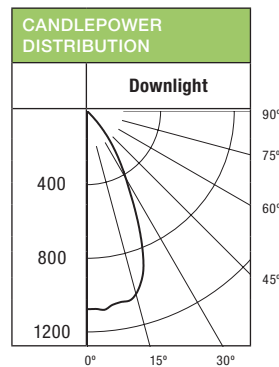


**LUMINANCE DATA**


Angle	0°
45	27980
55	3097
65	2802
75	0
85	0

**ZONAL LUMEN SUMMARY**

Zone	Lumens	%Fixture
0-30	682	75.7
0-40	853	94.8
0-60	898	99.7
0-90	900	100.0
90-180	0	0.0
0-180	900	100.0

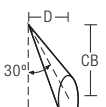


**0° HORIZONTAL PLANE**



D	FC	L	W
5.5'	35.6	4.8	4.8
7'	22	6	6.2
8'	16.8	7	7
9'	13.3	7.8	7.8
10'	10.8	8.8	8.8
12'	7.5	10.6	10.6

**35° VERTICAL PLANE**



D	FC	L	W	CB
2'	101.4	1.8	2	3.5
3'	45.1	2.8	3	5.2
4'	25.4	3.8	4	6.9
5'	16.2	4.7	5	8.7
6'	11.3	5.7	6	10.4
8'	6.3	7.6	8	13.9
10'	4.1	9.6	10	17.3
12'	2.8	11.5	12	20.8

# Complete Lighting Controls Solutions

Eaton's AL Series dimmers offer versatile options to set the mood and reduce energy consumption.

Visit [www.cooperwiringdevices.com/ALSeries](http://www.cooperwiringdevices.com/ALSeries) for more information.



Dimmer Features	ACCELL (AAL06)	DEVINE (DAL06P)	SKYE (SAL06P)	TRACE (TAL06P)
<b>Rapid Start feature</b>	Selectable ON or OFF	Fully adjustable	Fixed ON	Fully adjustable
<b>Adjustable high-end trim</b>	•			
<b>Adjustable low-end trim</b>	•	•	•	•
<b>Wiring configurations</b>	Single-pole or multi-location	Single-pole or three-way	Single-pole or three-way	Single-pole or three-way
<b>Color change kits</b>	•	•		•

**Note:** The Rapid Start feature is used to ensure the right amount of power boost during start-up. When a dimmer with Rapid Start is turned on from a low dimmer setting, the LED lighting may exhibit a momentary flash. Select dimmer models offer an adjustment of the Rapid Start feature. The user may wish to adjust this setting to reduce the boost and resulting momentary flash. If this capability is desired, the user should select dimmer models designated as "fully adjustable" or "selectable ON or OFF".





## Energy Saving



### Save over \$400\* in Energy Costs

Changing one traditional lamp to a Halo H4 LED recessed downlight will save you hundreds of dollars over the life of the fixture. Changing multiple fixtures will significantly lower your electric bill and change how you view lighting.

The Halo H4 LED fixture is more efficient than traditional light sources. For example, the H4 consumes 74% less energy than a 50W MR16 lamp.

## Sustainability



Halo LED offers environmental and sustainable solutions that reduce carbon emissions and hazardous materials to improve the environment.

Halo LED is mercury-free, PCB-free and lead-free and thus does not need special handling for disposal. The Halo LED downlight solution contributes to reduction of carbon emissions and conserves natural resources. Halo provides solutions with LEDs that make it easy to be environmentally responsible.

## Long Life



LEDs are solid state devices that do not have filaments or glass components that could break. The light source is not susceptible to vibration, thus reducing the risk of premature failure. The Halo H4 LED design delivers over 70% of the initial light output long after 50,000 hours of projected operation. The long service life of Halo LED fixtures dramatically reduce maintenance and service costs over traditional sources.

H4 LED Gen 2 Versus 50W MR16 (Dichroic) Halogen Lamp	
<b>Annual Electricity Savings</b>	\$11.91

Add Up Your Lifetime Savings*	
<b>Lifetime Electricity Savings*</b>	\$271.61
<b>Lifetime Lamp Replacement Savings*</b>	\$166.17
<b>Total Savings*</b>	\$437.78

\* Savings based on \$0.115 per Kilowatt Hour and 6 Hours average use per day and comparable 50,000 hours LED of lamp life, 50W lumen equivalent MR16 (dichroic) halogen lamp.



In the kitchen pictured, the downlighting energy load could be reduced 74% with Halo H4 LED luminaire (compared to 50W MR16 lamps). Additionally, LED luminaires dramatically lower the impact on the air conditioning system compared to incandescent and halogen lamps.



### Eaton's Cooper Lighting Business

Headquarters  
1121 Highway 74 South  
Peachtree City, GA 30269  
P: 770-486-4800  
www.cooperlighting.com

#### Canada Sales

5925 McLaughlin Road  
Mississauga, Ontario L5R 1B8  
P: 905-501-3000  
F: 905-501-3172

### Our Lighting Product Brands

Halo  
Halo Commercial  
Portfolio  
IRiS  
RSA  
Metalux  
Corelite  
Neo-Ray  
Fail-Safe  
MWS  
Ametrix  
Shaper  
io  
Lumark  
McGraw-Edison  
Invue  
Lumière  
Streetworks  
AtLite  
Sure-Lites

### Our Controls Product Brands

Greengate  
iLumin  
Zero 88  
Fifth Light Technology  
iLight (International Only)

