

Rack PDUs

Liebert MPX™	2.4	to	2.11
Liebert MPH™	2.12	to	2.17
Knürr DI-STRIP®	2.18	to	2.57
Inline Metering (IMS)	2.58	to	2.64



Safe, efficient and economical: Rack PDUs from Emerson Network Power

A reliable power supply is particularly important in a server rack! Emerson Network Power's "Power Distribution Units" (PDU) provide the highest possible level of **safety, security and availability** with their robust electro-mechanical setup.




The rack PDUs ensure a sound **economical benefit**. The Liebert MPX™'s modularity also enables requirements-oriented and constantly compatible expansion.

The rack PDUs provide the perfect economical solution for every specific requirement and exceptional efficiency with numerous technical features.



Interacting with rack PDUs, rack monitoring systems and cooling systems, Liebert NFORM guarantees the monitoring and controlling of all relevant infrastructure parameters in server rooms and data centers, alarms as required, and even intercepts controlling to prevent damages.

PDU product series overview:

BASIC	 <p>Features:</p> <ul style="list-style-type: none">■ High stability and torsional strength provided with closed sheet steel extrusions and ideal integration into Knürr rack systems.■ Best possible conductivity: continuous brass busbars with many models.■ Double spring contacts for shock hazard-proof and low contact resistance.
MANAGED	 <p>Additional features:</p> <ul style="list-style-type: none">■ Highest possible safety, security and availability with an operating temperature of max. 55°C.■ Extensive measurement functions (power, current, voltage and energy), with higher measurement accuracy of up to $\pm 1\%$.■ Remote-switchable outputs with many models.■ Same communication cards used as with Liebert MPX, which means same software interface as with administration.■ Up to 4 Liebert MPX/MPH can be controlled via one IP.■ External sensors and a display can also be connected.
ADAPTIVE	 <p>Additional features:</p> <ul style="list-style-type: none">■ The Liebert MPX is a modular PDU; input and output modules can be flexibly equipped as required.■ Additional wiring between the module is not required; a fixed databus is integrated on a continuous busbar.■ Highest power density up to max. 3 x 63 A per bar possible.■ Possible failures can be detected early on with additional monitoring (N-conductor, apparent power, crest factor and power factor).■ Depending on the output module, measuring and remote switching is possible up to output level, which allows each server to be monitored.■ The output modules can be changed during running operation; there are no downtimes.

Emerson Network Power Rack PDUs Europe – product series overview

Overview : Emerson Network Power Rack PDUs Europe

	Knürr DI-STRIP Basic Rack PDU®			Liebert MPH™ Managed Rack PDU		Liebert MPX™ Adaptive Rack PDU			
Features	Knürr DI-STRIP	Knürr DI-STRIP M	Knürr DI-STRIP RM	Liebert MPH Branch Monitored	Liebert MPH controlled	Liebert MPX Elementary	Liebert MPX Elementary Phase monitored	Liebert MPX Branch monitored	Liebert MPX Receptacle managed
Power distribution	●	●	●	●	●	●	●	●	●
Modular						●	●	●	●
Display		Fixed	Fixed	Modular	Modular		Modular	Modular	Modular
Remote interface			●	●	●		●	●	●
Measuring at input level		●	●	●	●		●	●	●
Measuring per group				●	●			●	●
Measuring per output									●
Switching per output					●				●
Measurement parameters		A	A	A,V,W,KWh, Hz	A,V,W,KWh, Hz		A,V,W,KWh, Hz	A,V,W,KWh, VA, Hz, power factor	A,V,W,KWh, VA, Hz, power factor, crest factor
Input power	1ph + 3ph max 32A	1ph + 3ph max 32A	1ph + 3ph max 32A	1ph + 3ph max 32A	1ph + 3ph max 32A	1ph + 3ph max 63A	1ph + 3ph max 63A	1ph + 3ph max 63A	1ph + 3ph max 63A
Outputs	IEC C13&C19 Schuko Switzerland France	IEC C13&C19 Schuko Switzerland France	IEC C13&C19 Schuko Switzerland France	IEC C13&C19	IEC C13&C19	IEC C13&C19 Schuko	IEC C13&C19 Schuko	IEC C13&C19 Schuko	IEC C13&C19 Schuko
Connection of different kinds of sensors				●	●		●	●	●

The Liebert MPX™ and Liebert MPH™ accessories are largely identical, which simplifies administration!

INFO

You will find further details and order numbers in our product catalog:

www.EmersonNetworkPower.eu

Emerson Network Power Rack PDUs

Emerson Network Power Rack PDUs

Liebert MPX™	2.4
Products	2.8
Liebert MPH™	2.12
Products	2.14
Knürr DI-STRIP®	2.18
Knürr DI-STRIP®	
DI-STRIP® RM	2.22
DI-STRIP® M	2.23
DI-STRIP HighPower®	2.24
TDI-STRIP® TriplePower®	2.26
DI-STRIP® BladePower®	2.28
DI-STRIP® PizzaPower®	2.29
DI-STRIP® Classic	2.29
DI-STRIP® Compact	2.30
DI-STRIP® Protector	2.31
DI-STRIP® Power Cleaner	2.33
DI-STRIP® Safety Basic	2.34
DI-STRIP® Safety Standard	2.35
DI-STRIP® Master-Slave	2.36
DI-STRIP® Combi	2.37
GST18, 1-phase	2.38
GST18, 3-phase	2.40
Knürr DI-STRIP®	
Euro Plug System	2.42
Knürr DI-STRIP®	
for France	2.45
Knürr DI-STRIP®	
for Switzerland	2.55
Inline Metering System (IMS)	
Knürr DI-STRIP® IMS	2.62
Liebert MPX™ IMS	2.63
Knürr Modular IMS	2.64



INPUT POWER

- Configurable: 20 to 60 A (USA); 16 to 63 A (EU);
- Single-phase and three-phase
- Cable routing from above and below



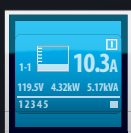
OUTPUT DISTRIBUTOR

- Scalable, combination-compatible and swappable during operation
- Single-phase NEMA 5-20R, IEC-C13, IEC-C19, Schuko
- Load balance



MODULARITY

- Input modules
- Output modules
- External display
- External sensors



MONITORING

- Various levels: Input level, module level, output level
- Temperature and humidity
- Door contacts and floating break input contacts



REMOTE SOCKET CONTROL

- Socket level



LOCAL MONITORING

- Display for user
- Can also be mounted outside the rack



REMOTE MONITORING

- Secure web and SNMP interfaces
- Liebert Nform
- Avocent DSView



OVERLOAD PROTECTION

- Physically and electrically insulated circuit breakers for every socket module



RACK PDU ARRAY™

- One IP for up to 4 rack PDUs
- Liebert MPX™ and Liebert MPH™ in the same private network



FORM FACTOR

- Vertical mounting (0 U)
- Fits into trade standard 23/42 U racks and/or 800 mm wide racks



Liebert MPX™

Adaptive Rack PDU: Respond requirements-oriented to every change!



reddot design award
winner 2011

The Liebert MPX™ modular rack PDU system is particularly impressive with its maximum flexibility, highest possible availability and low operating costs. With the Liebert MPX™ user can quickly and specifically react to new requirements for power supply and rack management. The Liebert MPX™ gives users the ability to dimension their rack PDU system so that all current requirements are met first off. The system can be flexibly adjusted when requirements change later on. The Liebert MPX™ builds on a design that is based on a power supply/communication bus and on input/output modules.



Status display (RPC-BDM)

Can be easily positioned at the optimum spot for the individual rack; also functions outside the rack. This connected display can be mounted just as the user wishes.

■ Highest possible security and availability with:

- Redundant control electronics power supply (with redundant tapping of various phase in the Power Entry Module).
- Fixed databus on the busbar (making cable breaks a thing of the past).
- With complete data tapping on the PEM (without any additional external monitoring devices).
- Additional neutral conductor measurement.
- Crest factor measurement (mains quality evaluation, allowing power supply failures to be identified early on).

■ Maximum flexibility and scalability with:

- Configuration of all modules according to their requirements (patented quick fixing for safe installation).
- One busbar for different networks and power levels – input module can be freely selected.
- All other components are "hot swappable" in running operation.
- Mobile display for reading all MPX™ data on the rack.
- Optical slot space display (easy server slot space identification at the push of a button).

■ Highest possible power levels in all areas with:

- Power illustration up to 28 kVA per bar and 55°C ambient temperature.
- Only one IP address for up to 4 bars with 24 modules.
- Plug&Play for numerous sensors.
- Extensive monitoring with a measuring accuracy of +/- 1% up to output level.
- Module and sensor autodetect function with operating software.
- Lowest possible MPX™ system power loss.

■ Perfect for blade servers and changing environments

Data centers work more and more with blade servers and require more processor power on low rack space; cabling must be simplified; power consumption must be reduced. With the Liebert MPX™ the data center can quickly react to changes, which is why our product is the right choice for you infrastructure's administration.

Liebert MPX™: Four equipment models for different requirements

The Liebert MPX™ modular rack PDU consists of various modules. The foundation stone is a busbar, which is responsible for the power and communication distribution to the individual modules. The input power is routed via the Liebert MPX™ Power Entry Module (Liebert MPX™ PEM) to the Liebert MPX™ system. Different output modules (Liebert MPX™ Branch Receptacle Modules, Liebert MPX™ BRM) are available as required. Four different variants can be set up depending on the busbars' equipping:

1. Liebert MPX™ Elementary

Modular basic power distribution without measurement and control function. An upgrade to another equipment model is no problem!

2. Liebert MPX™ Elementary Phase monitored

Modular power distribution with measurement on the input per output module. An upgrade to the next line up is possible by equipping with the respective output modules.

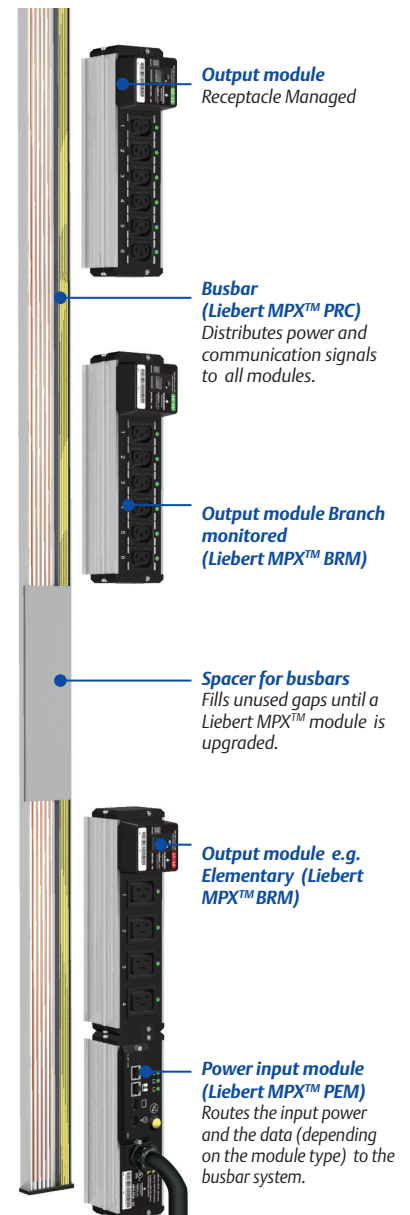
3. Liebert MPX™ Branch monitored

Modular power distribution with measurement on the input per output module. An upgrade or downgrade to another line is possible by equipping with the respective output modules.

4. Liebert MPX™ Receptacle managed

Modular power distribution with measurement on the input per output module and per output. The individual outputs can also be switched on and off remotely. A downgrade to another line is possible by equipping with the respective output modules.

A combination of the "Elementary Phase monitored", "Branch monitored" and "Receptacle managed" lines on a shared busbar is also possible and is one of the exceptional features of the Liebert MPX™. Interfaces for the network communication, the sensors and/or the local display are provided by the Liebert Rack PDU Card (Liebert RPC) in the Liebert MPX™ PEM. The Liebert RPC Card enables connection to an optional RPC Basic Display Module (RPC BDM) to display the local status and alarms.



Liebert MPX™, equipment models in Europe

			Four equipment models			
		Order number	Liebert MPX™ Elementary	Liebert MPX™ Elementary Phase monitored	Liebert MPX™ Branch monitored	Liebert MPX™ Receptacle managed
Busbar	Length 1035	MPXPRC-V1035XXX	x	x	x	x
	Length 1880	MPXPRC-V1880XXX	x	x	x	x
Input modules	1ph 32A fixed*	MPXPPEM-EHAEXQ30	x			
		MPXPPEM-EHAAXQ30		x	x	x
	3ph 16A fixed	MPXPPEM-EHAEXT30	x			
		MPXPPEM-EHAAXT30		x	x	x
	3ph 32A fixed	MPXPPEM-EHAEXR30	x			
		MPXPPEM-EHAAXR30		x	x	x
	3ph 63A fixed	MPXPPEM-EHBEXZ30	x			
		MPXPPEM-EHBAXZ30		x	x	x
Output modules Elementary	IEC-C13 L1	MPXB RM-EEBC7N1N	x	x		
	IEC-C13 L2	MPXB RM-EEBC7N2N	x	x		
	IEC-C13 L3	MPXB RM-EEBC7N3N	x	x		
	IEC-C19 L1	MPXB RM-EEBC4O1N	x	x		
	IEC-C19 L2	MPXB RM-EEBC4O2N	x	x		
	IEC-C19 L3	MPXB RM-EEBC4O3N	x	x		
	Schuko L1	MPXB RM-EEBC3P1N	x	x		
	Schuko L2	MPXB RM-EEBC3P2N	x	x		
Output modules Branch monitored	IEC-C13 L1	MPXB RM-EBBC6N1N			x	
	IEC-C13 L2	MPXB RM-EBBC6N2N			x	
	IEC-C13 L3	MPXB RM-EBBC6N3N			x	
	IEC-C19 L1	MPXB RM-EBBC4O1N			x	
	IEC-C19 L2	MPXB RM-EBBC4O2N			x	
	IEC-C19 L3	MPXB RM-EBBC4O3N			x	
	Schuko L1	MPXB RM-EBBC3P1N			x	
	Schuko L2	MPXB RM-EBBC3P2N			x	
Output modules Receptacle managed	IEC-C13 L1	MPXB RM-ERBC6N1N				x
	IEC-C13 L2	MPXB RM-ERBC6N2N				x
	IEC-C13 L3	MPXB RM-ERBC6N3N				x
	IEC-C19 L1	MPXB RM-ERBC4O1N				x
	IEC-C19 L2	MPXB RM-ERBC4O2N				x
	IEC-C19 L3	MPXB RM-ERBC4O3N				x
	Schuko L1	MPXB RM-ERBC3P1N				x
	Schuko L2	MPXB RM-ERBC3P2N				x
Sensors	1xTemp.	SN-Z01		x	x	x
	3xTemp.	SN-Z02		x	x	x
	3xT. + 1xHum	SN-Z03		x	x	x
	1xTemp. Mod.	SN-T		x	x	x
	Temp/Hum Mod.	SN-TH		x	x	x
	2xDoor Mod.	SN-2D		x	x	x
	3xInput Mod.	SN-3C		x	x	x
Display ext.		RPCBDM-1000		x	x	x

Upgrade possible!

Different combinations possible!

*When using 1ph input modules then only L1 output modules can be equipped.



DOS20153

Liebert MPX™ - Input Module/Power Supply

Elementary and Monitored type:

- The MPX PEM is fixed on the MPX PRC and provides the connection to the power supply.
- Cable is connected fixed, 3 m long
- With IEC60309 plug, 1Ph/N/PE 6h blue, 3Ph/N/PE 6h red

Monitored type:

- The MPX PEM provides the connection to the databus for the data communication.
- Integrated Liebert RPC-1000 communication card enables remote monitoring and maintenance of MPH units.
- Provides the following measured values of the phase inputs: effective power, current, voltage, frequency and consumption.
- Power alarm functions for the individual phases and their operating status are also supported.
- Further important features: Three displays inform the user about the current status of each individual input.
An acoustic alarm is activated with specific overload conditions.
- The communication card centralizes the Liebert MPX's local and remote administration.
- There is administration via web and SNMP for systems connected to the Ethernet.
- Also serves as the connection point for versatile support options and devices, such as the display module (RPC BDM), various sensors and connection to other Liebert MPX or Liebert MPH systems, for example.
- Has RJ-45 ports for all connections and does not require any special cabling.
- Supports 10 and 100 MBit Ethernet and provides on-site firmware upgrade.

Technical data Interfaces:

- RJ-45 LAN port (10/100 MBit) – for connecting to the local network (LAN) via an Ethernet cable.

- Expansion/administration port for local configuration using a computer/laptop, for setting up a link-up of several PDUs (Liebert MPX or MPH).
- Display port for connecting the RPC BDM (display module).
- External sensor port for connecting optional sensors.

Supported technologies:

- Web support, provides Liebert MPX control and management. Authorized users can view status information via their network.
- SNMP support, provides Liebert MPX SNMP management.
- Easy integration in Liebert Nform, Avocent DSView and Nagios.

Material/finish

Housing: Aluminum
Cover: Sheet steel
Power contacts: Silvered
Databus contacts: Gilded (only Monitored type)

Dimensions

Width: 75 mm
Height: 65 mm
Cable: 3 m

Color

Housing: Aluminum/RAL7021 dark gray

Approvals

- CE label in accordance with Low Voltage Directive 2006/95/EC
- EMC Directive 2004/108/EC
- BV GS

Supply schedule

1 MPX PEM power input module
incl. connection cable
incl. RPC-1000 communication card
(only Monitored type)

L	W	H	U	Feed	Load rating	Type	Order no.	UP
220	75	65		Fixed	230VAC, max 32A	Elementary	MPXPPEM-EHAEXQ30	1 unit
220	75	65		Fixed	230/400VAC, max 16A	Elementary	MPXPPEM-EHAEXT30	1 unit
220	75	65		Fixed	230/400VAC, max 32A	Elementary	MPXPPEM-EHAEXR30	1 unit
266	75	65		Fixed	230/400VAC, max 63A	Elementary	MPXPPEM-EHBEXZ30	1 unit
220	75	65		Fixed	230VAC, max 32A	Monitored	MPXPPEM-EHAAXQ30	1 unit
220	75	65		Fixed	230/400VAC, max 16A	Monitored	MPXPPEM-EHAAXT30	1 unit
220	75	65		Fixed	230/400VAC, max 32A	Monitored	MPXPPEM-EHAAXR30	1 unit
266	75	65		Fixed	230/400VAC, max 63A	Monitored	MPXPPEM-EHBAXZ30	1 unit

Dimensions in mm: L = Length, W = Width, S = Switch,
n = Number of sockets, F1 = Standard side, F2 = Design side, 19" = Suitable for 19" installation, Safe = Child-safe, U = Standard height unit, UP = Unit of packaging,

= Express item

Conversion: 1 mm = 0.03937 inch 1 kg = 2.2046 pound

Replace **x** with the number of your color combination:
.1 = RAL 7035, .6 = RAL 7035/RAL 2003



DOS20153

Liebert MPX™ BRM - Output Module

- The MPX BRM takes care of the power distribution to the individual consumers.
- Each module taps a phase; this is color-identified on the module.
- All modules are protected against overload with a 20A circuit breaker.
- Changing the modules during operation enables a user-defined installation, without having to shut down the Liebert MPX.
- Up to 3 BRM output modules can be installed on a 1,035 mm PRC busbar; up to 6 BRM output modules can be installed on a 1,880 mm PRC busbar.
- The MPX BRMs have an LED-ID indicator, which clearly identifies every module with a number.
- The modules are administered in the software
- Provides the following measured values: power, current, voltage, apparent power, kWh, frequency, power factor and crest factor
- Power alarm functions and the operating status are supported
- The individual outputs can be switched on and off remotely

Type E - Elementary:

- Module for power distribution via respective outputs

Type B – Branch monitored:

- Module for power distribution via respective outputs with measuring function on module level
- The MPX BRMs have an LED-ID indicator, which clearly identifies every module with a number.
- The modules are administered in the software
- Provides the following measured values: power, current, voltage, apparent power, kWh and power factor
- Power alarm functions and the operating status are supported

Type R – Receptacle managed:

- Module for power distribution via respective outputs with measuring function on module level and output level

Material/finish

- Housing: Aluminum
- Cover: Sheet steel
- Power contacts: Silvered
- Databus contacts: Gilded (only type B and R)

Dimensions

- Width: 75 mm
- Height: 65 mm

Color

- Housing: Aluminum/RAL7021 dark gray

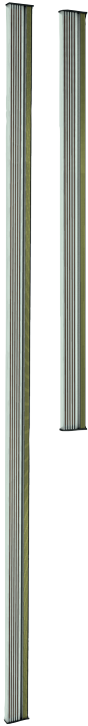
Approvals

- CE label in accordance with Low Voltage Directive 2006/95/EC
- EMC Directive 2004/108/EC
- Innova GS

Supply schedule

- 1 MPX BRM Output Module
- Operating instructions

L	n	Outputs	Load rating per output	Phase tapping	Type	Order no.	UP
266	7	IEC320 C 13	10A	L1	E	MPXBRM-EEBC7N1N	1 unit
266	7	IEC320 C 13	10A	L2	E	MPXBRM-EEBC7N2N	1 unit
266	7	IEC320 C 13	10A	L3	E	MPXBRM-EEBC7N3N	1 unit
266	4	IEC320 C 19	16A	L1	E	MPXBRM-EEBC4O1N	1 unit
266	4	IEC320 C 19	16A	L2	E	MPXBRM-EEBC4O2N	1 unit
266	4	IEC320 C 19	16A	L3	E	MPXBRM-EEBC4O3N	1 unit
266	3	Schuko CEE 7/4	16A	L1	E	MPXBRM-EEBC3P1N	1 unit
266	3	Schuko CEE 7/4	16A	L2	E	MPXBRM-EEBC3P2N	1 unit
266	3	Schuko CEE 7/4	16A	L3	E	MPXBRM-EEBC3P3N	1 unit
266	6	IEC320 C 13	10A	L1	B	MPXBRM-EBBC6N1N	1 unit
266	6	IEC320 C 13	10A	L2	B	MPXBRM-EBBC6N2N	1 unit
266	6	IEC320 C 13	10A	L3	B	MPXBRM-EBBC6N3N	1 unit
266	4	IEC320 C 19	16A	L1	B	MPXBRM-EBBC4O1N	1 unit
266	4	IEC320 C 19	16A	L2	B	MPXBRM-EBBC4O2N	1 unit
266	4	IEC320 C 19	16A	L3	B	MPXBRM-EBBC4O3N	1 unit
266	3	Schuko CEE 7/4	16A	L1	B	MPXBRM-EBBC3P1N	1 unit
266	3	Schuko CEE 7/4	16A	L2	B	MPXBRM-EBBC3P2N	1 unit
266	3	Schuko CEE 7/4	16A	L3	B	MPXBRM-EBBC3P3N	1 unit
266	6	IEC320 C 13	10A	L1	R	MPXBRM-ERBC6N1N	1 unit
266	6	IEC320 C 13	10A	L2	R	MPXBRM-ERBC6N2N	1 unit
266	6	IEC320 C 13	10A	L3	R	MPXBRM-ERBC6N3N	1 unit
266	4	IEC320 C 19	16A	L1	R	MPXBRM-ERBC4O1N	1 unit
266	4	IEC320 C 19	16A	L2	R	MPXBRM-ERBC4O2N	1 unit
266	4	IEC320 C 19	16A	L3	R	MPXBRM-ERBC4O3N	1 unit
266	3	Schuko CEE 7/4	16A	L1	R	MPXBRM-ERBC3P1N	1 unit
266	3	Schuko CEE 7/4	16A	L2	R	MPXBRM-ERBC3P2N	1 unit
266	3	Schuko CEE 7/4	16A	L3	R	MPXBRM-ERBC3P3N	1 unit



DOS20153

Liebert MPX™ PRC - Power Distribution Unit/Communication Bus

- The MPX PRC is the foundation stone of the Liebert MPX PDU.
- Power and data transfer buses are integrated fixed over the entire length of the MPX PRC.
- The MPX BRMs (output modules) and the MPX PEM (Power Entry Module) are fixed on the MPX PRC and depending on the type take care of the modules' power feed, output, monitoring and management.

Material/finish
 Busbars housing: Aluminum
 Busbars: Copper
 Databus: Gilded

Dimensions
 Width: 68 mm
 Height: 24 mm

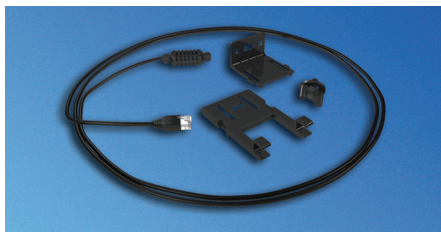
Color
 Housing: Aluminum

Approvals
 - CE label in accordance with Low Voltage Directive 2006/95/EC
 - EMC Directive 2004/108/EC
 - BV GS

Load rating
 Max. current intensity: 3 x 63 A
 Nominal voltage (L-N / L-L): 230 / 400 VAC

Supply schedule
 1 MPX™ PRC - Power Distribution Unit/
 Communication Bus
 1 mounting set

L	W	H	U	Model	Order no.	UP
1035	68	24	23	1 PEM (220 mm) + 3 BRM	MPXPRC-V1035XXX	1 unit
1880	68	24	42	1 PEM (220/266 mm) + 6 BRM	MPXPRC-V1880XXX	1 unit



DOS20153

Liebert MPX™/MPH™ Sensors

- The sensors are designed for tool-less installation in a Knürr Miracel Rack, but they can also be installed in any other rack.
- "Fixed" type sensors are fixed to a cable.
- "Modular" type sensors can be connected with the delivered cable.
- Are affixed to the RPC-1000 communication card
- Several sensors can be connected in rows (max. length: 20m)
- Are automatically displayed in the Liebert MPX/MPH software
- Temperature measuring range: 5-55°C

- Accuracy: +/- 0.5°C
- Humidity measuring range: 10 – 95%
- Accuracy: +/- 3.5%

Note
 The sensors are not required for operating the Liebert MPX or MPH, but they require the Liebert RPC-1000 (communication card)

Supply schedule
 1 sensor with connection cable
 Operating instructions

Cable length	Type	Model	Order no.	UP
3660	Fixed	Single temp. sensor	SN-Z01	1 unit
5180	Fixed	Triple temp. sensor	SN-Z02	1 unit
5180	Fixed	Triple temp. sensor + single humidity	SN-Z03	1 unit
2000	Modular	Single temp. sensor	SN-T	1 unit
2000	Modular	Triple temp. sensor + single humidity	SN-TH	1 unit
2000	Modular	2 x door contact - input module*	SN-2D	1 unit
2000	Modular	3 x digital input	SN-3C	1 unit

* Suitable door contact switch: Order no.: 06.108.115.9



DOS20153

Liebert RPC BDM - 1000 Display Module

- Provides the local display of the monitored data for all connected Liebert MPX and Liebert MPH systems.
- Operated with the aid of a navigation switch.
- Connected via a cable with the Liebert RPC, which provides the user the option of placing the displays where they can be easily read in accordance with the local space conditions.
- An individual display can be used for up to four Liebert MPX or Liebert MPH PDUs, which are connected to a PDU array.

Note
The Display Module is not required for operating the Liebert MPX or MPH, but it itself requires the Liebert RPC-1000 (communication card)

Supply schedule
1 RPCBDM-1000 Display Module
1 connection cable, 2 m
1 mounting set

L	W	H	U	Model	Order no.	UP
					RPCBDM-1000	1 unit



Liebert Power distribution BRM Elementary Safety bracket

- Safety brackets are available for strain relief for network equipment power supply cords.
- Safety brackets are sold in kits of 3 pieces.

Supply schedule
3 safety brackets
Mounting material

How supplied
flat-packed kit

Please note
Suitable for MPXBRM-EEBC7NxN (x=1,2,3)

L	W	H	U	Model	Order no.	UP
					03.910.219.9	1 unit



Liebert Power distribution BRM Cable Restraints kit

- Cable restraints are available for strain relief for network equipment power supply cords.
- Cable restraints support most IEC C13 plug types with grip edge around the plug body (application confirmation required).
- Cable restraints are sold in kits of 18 pieces.

Supply schedule
1 cable restraints kit (18 pieces).

How supplied
Flat-packed kit

Please note
Optimum locking function only with connection cable 04.000.051.9.
Suitable only for MPXBRM-EBBC6NxN and MPXBRM-ERBC6NxN (x=1,2,3).

L	W	H	U	Model	Order no.	UP
					03.910.216.9	1 unit

Liebert MPH™ Managed Rack-PDU Systems monitoring and control

The Liebert MPH™ Managed Rack PDU is a power supply system with monitoring and control functions. The housing consists of a robust sheet steel enclosure, so that the PDU can be easily installed in a Knürr rack, or even into other enclosure systems. The Liebert MPH™ can be installed vertically or horizontally (19"), depending on the type. The PDU is delivered pre-installed with the same communication card (RPC-1000) as the Liebert MPX™. All Liebert MPX™ external modules can therefore be connected (e.g. sensors, display module). Up to four Liebert MPX™/MPH™ can be connected as rack PDU array to consolidate the user's IP connection and the device monitoring.

The Liebert MPH™ is available in two equipment models:

■ 1. Liebert MPH™ Type RM

The Liebert MPH™ Type RM is a monitored PDU that monitors the phase inputs. Measured per phase are: power, current, voltage and consumption. The power is also monitored per group (only 32A model). Different threshold values enable detailed alarm signals.

■ 2. Liebert MPH™ Type C

The Liebert MPH™ Type C can also switch the individual outputs on and off remotely.

■ Highest possible security and availability with:

- Power illustration up to 22 kVA per PDU and 55°C ambient temperature
- N-conductor current display with 3-phase feed, which prevents feed cable overload.
- Overload protection can be extended per group with all 32A models; minimizes danger with cascaded PDU overload.
- Setting alarm threshold values, which means possible failures are detected early on.

■ Flexibility with:

- Connection option for an external display, which is easy to mount and can also be combined with the Liebert MPX™.
- Connection option for external sensors, which means temperatures and humidity can be monitored.
- Doors and alarm contacts can also be monitored and displayed via external input contacts.

- Versatile installation in the rack as 19" or space-saving vertical installation.
- Same, compatible monitoring platform for Liebert MPH™ and Liebert MPX™.

■ Low operating costs with:

- Rack PDU array setup, which means up to 4 MPH/MPX can be controlled with one IP address; installation becomes quicker and easier.
- Extensive energy and current measurement, which provides data required for maximizing the power and cooling infrastructure.
- Special switching technology of the individual sockets, which reduces the rack PDU's power loss.
- Data interface with http and https protocol; no external software required for configuration and monitoring. The PDU can, however, also be integrated via SNMP into other management platforms.



INPUT POWER

- 20 to 30 A (USA);
- 16 to 32 A (EU);
- Single-phase and three-phase



OUTPUT DISTRIBUTOR

- NEMA 5-20R single-phase,
- IEC-C13 and IEC-C19;
- Combination systems



MODULARITY

- Communication card
- External display
- External sensors



MONITORING

- Input level
- Group level depending on type
- Temperature and humidity
- Door contacts and floating break input contacts



REMOTE SOCKET CONTROL

- Socket level



LOCAL MONITORING

- Display for user
- Can also be mounted outside the rack



REMOTE MONITORING

- Secure web and SNMP interfaces
- Liebert Nform
- Avocent DSView



OVERLOAD PROTECTION

- Circuit breakers for every group



RACK PDU ARRAY™

- One IP for up to 4 rack PDUs
- Liebert MPX™ and Liebert MPH™ in the same private network



FORM FACTOR

- Vertical mounting (0 U)
- Rack installation
- Slimline 0 U form factor for positioning two PDUs in just one rack





DOS20153

Liebert MPH™ Rack PDU

- The Liebert MPH® Type RM is a monitored power distribution unit that monitors the phase inputs. Measured per phase are: power, current, voltage and consumption. The power is also monitored per group (only 32A model).
- The Liebert MPH® Type C can also switch the individual outputs on and off remotely.
- Integrated Liebert RPC 1000 communication card enables remote monitoring and maintenance of MPH units.
- The RPC-1000 enables the interconnection of several MPH or MPX units and the connection of Liebert MPH® with the Liebert MPX® units for monitoring and administration.
- The Liebert MPH® can be monitored directly on-site with the RPC BDM-1000, an optional display module that is connected directly with the communication card. The monitoring unit can be flexibly mounted on the rack.

Material/finish

Housing: Sheet steel extrusion

Dimensions

Width: 50 mm (vertical), 178 mm (19")
 Height: 80 mm (vertical), 44 mm (19")
 Cable Length: 3 m

Color

Housing: RAL 7021 dark gray

Approvals

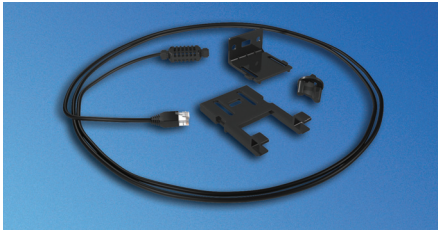
- CE label in accordance with Low Voltage Directive 2006/95/EC
- EMC Directive 2004/108/EC
- GS

Supply schedule

- 1 Liebert MPH® Socket Strip (PDU)
- 1 mounting brackets
- Operating instructions

L	Type	Input values	Input plug	Outputs IEC320	Order no.	UP
438*	RM	230Vac, 16A	IEC320 Sheet I	9xC 13	MPH-EBR09NXXO30	1 unit
438*	RM	230Vac, 32A	IEC60309 1ph/N/PE 6h	9xC 13	MPH-EBR09NXXQ30	1 unit
1730	RM	230Vac, 16A	IEC320 Sheet I	27xC 13	MPH-EBV27NXXO30	1 unit
1730	RM	230Vac, 16A	IEC320 Sheet I	21xC 13/6xC 19	MPH-EBV27NOXO30	1 unit
1730	RM	230Vac, 32A	IEC60309 1ph/N/PE 6h	21xC 13/6xC 19	MPH-EBV27NOXQ30	1 unit
1730	RM	230Vac, 32A	IEC60309 1ph/N/PE 6h	27xC 13	MPH-EBV27NXXQ30	1 unit
1730	RM	230/400Vac, 16A	IEC60309 3ph/N/PE 6h	27xC 13	MPH-EBV27NXXT30	1 unit
1730	RM	230/400Vac, 16A	IEC60309 3ph/N/PE 6h	21xC 13/6xC 19	MPH-EBV27NOXT30	1 unit
1730	RM	230/400Vac, 32A	IEC60309 3ph/N/PE 6h	27xC 13	MPH-EBV27NXXR30	1 unit
1730	RM	230/400Vac, 32A	IEC60309 3ph/N/PE 6h	21xC 13/6xC 19	MPH-EBV27NOXR30	1 unit
438*	C	230Vac, 16A	IEC320 Sheet I	9xC 13	MPH-ECR09NXXO30	1 unit
438*	C	230Vac, 32A	IEC60309 1ph/N/PE 6h	9xC 13	MPH-ECR09NXXQ30	1 unit
1730	C	230Vac, 16A	IEC320 Sheet I	27xC 13	MPH-ECV27NXXO30	1 unit
1730	C	230Vac, 16A	IEC320 Sheet I	21xC 13/6xC 19	MPH-ECV27NOXO30	1 unit
1730	C	230Vac, 32A	IEC60309 1ph/N/PE 6h	21xC 13/6xC 19	MPH-ECV27NOXQ30	1 unit
1730	C	230Vac, 32A	IEC60309 1ph/N/PE 6h	27xC 13	MPH-ECV27NXXQ30	1 unit
1730	C	230/400Vac, 16A	IEC60309 3ph/N/PE 6h	27xC 13	MPH-ECV27NXXT30	1 unit
1730	C	230/400Vac, 16A	IEC60309 3ph/N/PE 6h	21xC 13/ 6xC 19	MPH-ECV27NOXT30	1 unit
1730	C	230/400Vac, 32A	IEC60309 3ph/N/PE 6h	27xC 13	MPH-ECV27NXXR30	1 unit
1730	C	230/400Vac, 32A	IEC60309 3ph/N/PE 6h	21xC 13/ 6xC 19	MPH-ECV27NOXR30	1 unit

*(19")



DOS20153

Liebert MPX™/MPH™ Sensors

- The sensors are designed for tool-less installation in a Knürr Miracel Rack, but they can also be installed in any other rack.
- "Fixed" type sensors are fixed to a cable.
- "Modular" type sensors can be connected with the delivered cable.
- Are affixed to the RPC-1000 communication card.
- Several sensors can be connected in rows (max. length: 20m).
- Are automatically displayed in the Liebert MPX/MPH software.
- Temperature measuring range: 5-55°C
- Accuracy: +/- 0.5°C
- Humidity measuring range: 10 – 95%
- Accuracy: +/- 3.5%

Note

The sensors are not required for operating the Liebert MPX or MPH, but they require the Liebert RPC-1000 (communication card).

Supply schedule

1 sensor with connection cable
Operating instructions

Cable length	Type	Model	Order no.	UP
3660	Fixed	Single temp. sensor	SN-Z01	1 unit
5180	Fixed	Triple temp. sensor	SN-Z02	1 unit
5180	Fixed	Triple temp. sensor + single humidity	SN-Z03	1 unit
2000	Modular	Single temp. sensor	SN-T	1 unit
2000	Modular	Triple temp. sensor + single humidity	SN-TH	1 unit
2000	Modular	2 x door contact - input module*	SN-2D	1 unit
2000	Modular	3 x digital input	SN-3C	1 unit

* Suitable door contact switch: Order no.: 06.108.115.9



DOS20153

Liebert RPC BDM - 1000 Display Module

- Provides the local display of the monitored data for all connected Liebert MPX and Liebert MPH systems.
- Operated with the aid of a navigation switch.
- Connected via a cable with the Liebert RPC, which provides the user the option of placing the displays where they can be easily read in accordance with the local space conditions.
- An individual display can be used for up to four Liebert MPX or Liebert MPH PDUs, which are connected to a PDU array.

Note

The Display Module is not required for operating the Liebert MPX or MPH, but it itself requires the Liebert RPC-1000 (communication card).

Supply schedule

1 RPCBDM-1000 Display Module
1 connection cable, 2 m
1 mounting set

L	W	H	U	Model	Order no.	UP
					RPCBDM-1000	1 unit

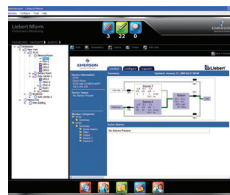
Accessories and software application, Liebert MPX™ and Liebert MPH™

Infrastructure management



Secure web and SNMP interfaces

- User-configured alarm threshold (3 threshold values per measuring point).
- Socket status and delayed switching.
- Electrical measurement: V, A, kW and kW/h, crest factor, Hz, power factor.
- Rack PDU array: Device consolidation.
- PDU Explorer: intuitive hierarchical interface.
- PDU status display according to strip or socket.
- Device Explorer: search according to user-defined device names.
- Environment monitoring: temperature and humidity, floating contacts.



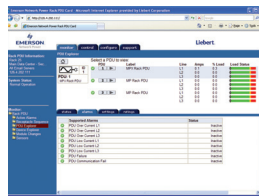
Liebert Nform

- Control technology for Liebert devices in the LAN.
- E-mail alarm and local notifications.
- Scalable software solution for IT environment.



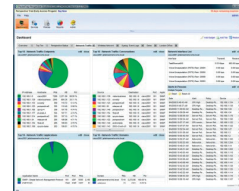
Avocent Rack Power Manager

- Alarm and incident administration of all equipment at the site.
- Control technology in real-time.
- Individually adjustable user interface.
- Trend and alarm reports.



Web-based monitoring

- PDU parameters monitoring via web browser.
- No application-specific software required.
- Simultaneous display of up to 4 PDUs.



Network management system

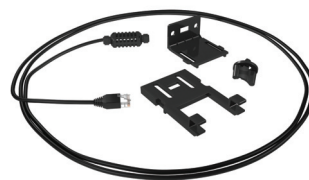
- Open standard solution.
- For all SNMP devices.
- Scalable software solution for all company sizes.

Optional hardware



Local display module – RPC-BDM

- Electrical and ambient parameters.
- 1 RPC BDM for up to 4 PDUs in the array.
- PDU Explorer.
- Device Explorer:

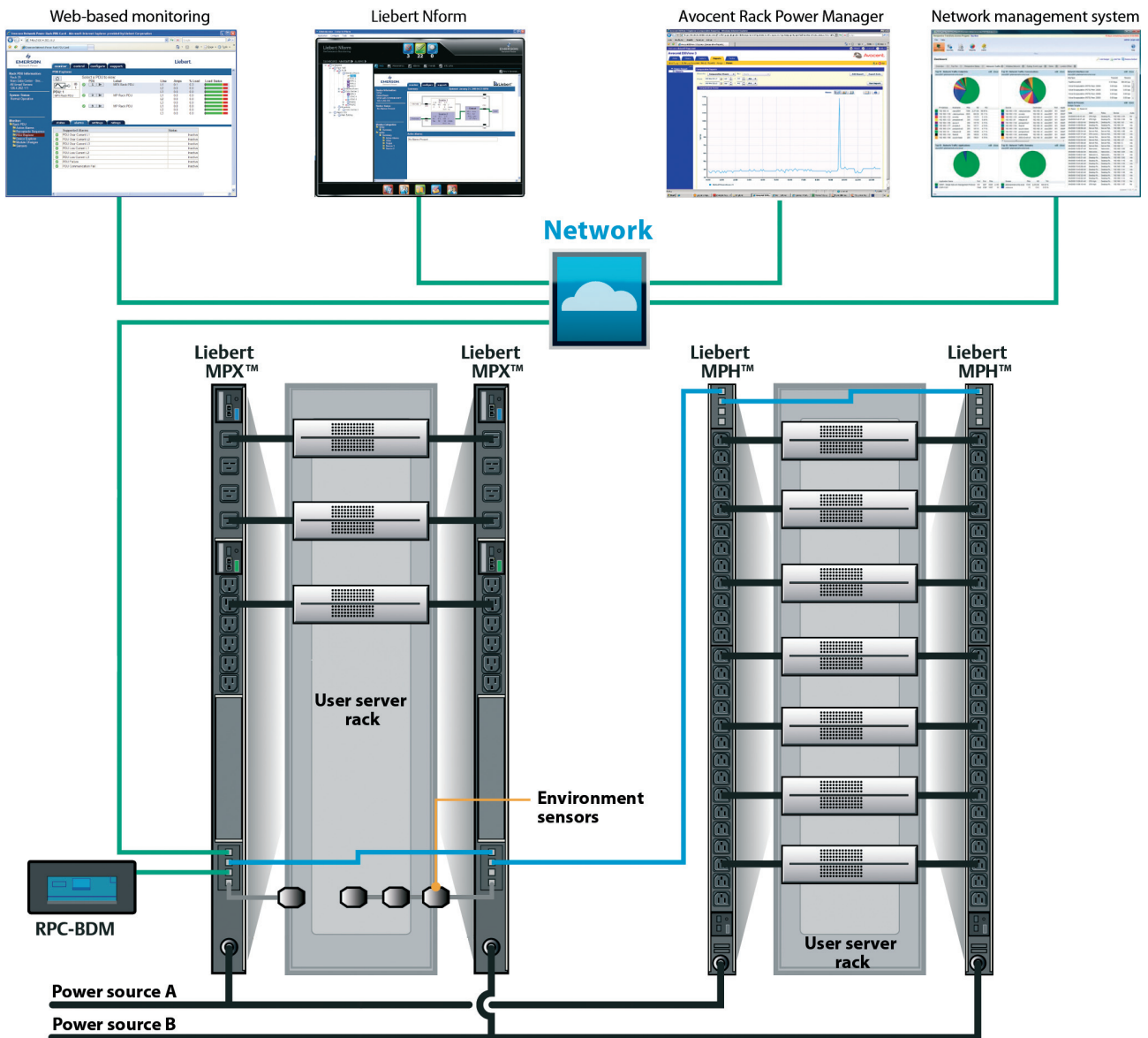


Liebert SN product family: Rack Sensors

- Temperature measurement with single or multiple sensors.
- Temperature and humidity measurement with multiple sensors.
- Door contact sensors and floating input contacts.

Flexible power distribution

Easy integration of the rack PDUs into new or existing management platforms



Rack PDU array (up to four systems)

Emerson Network Power Rack PDUs

Emerson Network Power Rack PDUs

Knürr DI-STRIP®

DI-STRIP® RM	2.22
DI-STRIP® M	2.23
DI-STRIP HighPower®	2.24
TDI-STRIP® TriplePower®	2.26
DI-STRIP® BladePower®	2.28
DI-STRIP® PizzaPower®	2.29

DI-STRIP® Classic	2.29
DI-STRIP® Compact	2.30
DI-STRIP® Protector	2.31
DI-STRIP® Power Cleaner	2.33
DI-STRIP® Safety Basic	2.34
DI-STRIP® Safety Standard	2.35
DI-STRIP® Master-Slave	2.36
DI-STRIP® Combi	2.37
GST18, 1-phase	2.38
GST18, 3-phase	2.40

Knürr DI-STRIP®

Euro Plug System	2.42
------------------	------

Knürr DI-STRIP®

for France	2.45
------------	------

Knürr DI-STRIP®

for Switzerland	2.55
-----------------	------



INPUT POWER

- Single-phase or three-phase
- Up to 22 kVa
- Easy input supply



OUTPUT DISTRIBUTOR

- NEMA 5-20R single-phase, IEC-C13 and C19, combination systems
- Schuko, France, Switzerland



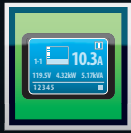
MODULARITY

- More connectivity with expansion unit for Basic Rack PDU GST18-PDUs



FORM FACTOR

- Vertical mounting (0 U)
- Rack installation



LOCAL MONITORING

- Fixed display



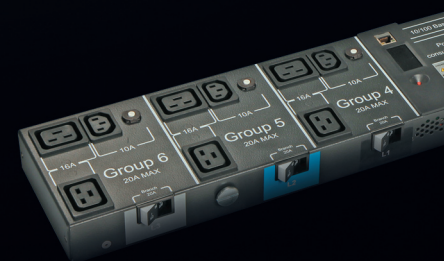
REMOTE MONITORING

- Secure web and SNMP interfaces
- Liebert Nform



OVERLOAD PROTECTION

- Circuit breakers/fuses per branching cable/output as required



Knürr DI-STRIP®

Basic Rack PDU: Robust PDUs with helpful equipment features

Knürr's Basic Rack PDUs are the solution for every data center looking for robust, economical and flexible rack concepts.

For power distribution the Knürr DI-STRIP® product family meets the requirements of numerous IT applications and other areas. Specially configured for the growing number of electronic components in network switching racks of server racks. Available with different accessories, such as circuit breakers, overvoltage (surge) protection, mains filter, master-slave function, emergency off button, fault current circuit breaker, local and remote power measurement, for example.



All DI-STRIP M / RM with display rotation for better reading.

■ Highest possible safety, security and availability with:

- Closed sheet steel extrusion, which means high stability and torsional strength.
- Extensive certification in acc. with international standard.
- Double spring contacts for shock hazard-proof and low contact resistance.
- Unbalanced load monitoring with 3-phase feed prevents feed cable overload (only DI-STRIP versions M and RM).
- Optimum load monitoring with servers' installation (only DI-STRIP versions M and RM).
- Individual outputs backup with DI-STRIP BladePower and Pizza Power.

■ Maximum flexibility with:

- Configurations and options with international compatibility

- 2.5 m or 4 m power cable for more spatial flexibility.
- Rotating display in 90° steps (only DI-STRIP versions M and RM).
- Tool-less installation, which means quick and easy extension in the rack (only DI-STRIP HighPower).

■ Extremely low operating costs with:

- Quick and easy installation on the rack requires minimum space and shorter installation time.
- Automatic background light reduction extends the display's service life and reduces the rack PDU power loss (only DI-STRIP models M and RM).
- Especially flat housing extrusion, providing full accessibility to the 19" level with 600 mm wide server racks.

Knürr DI-STRIP®: Three equipment models for precisely your requirements

Knürr DI-STRIP® Elementary:
Basic Rack PDU, Knürr DI-Strip Elementary® for simple power distribution requirements. The PDUs are available in different structures, depending on the rack installation requirements. Additional functions such as overvoltage (surge), mains filter, master-slave function, emergency off button and fault current circuit breaker are also



All DI-STRIP HighPower are equipped with especially flat housing extrusions and side cable entry. This enables installation without any loss of usable height units and cable entry from above and below. Full accessibility to the 19" level with 600 mm wide server racks is also a given.

Knürr DI-STRIP M® – local metered:
Basic Rack PDU Knürr DI-STRIP M® for simple power distribution requirements and local power measurement for your data center. Available in single and three-phase versions up to 22 kVa, with and without power measurement.

Local power measurement features:

- M = power measurement (local)
- Tried, tested and proven DI-STRIP® PDU with integrated local power measurement module.
- Large transparent LCD display.
- Meets the strictest EMC requirements with radiation and irradiation interference.
- Integrated unbalanced load monitoring with three-phase feed.
- Rotatable displays in 90° steps.
- Automatic background light reduction.
- Optimum load monitoring with servers' installation.

Knürr DI-STRIP RM® – remote metered:
Basic Rack PDU Knürr DI-STRIP RMRM® for simple power distribution requirements and remote power measurement for your data center. Available in single and three-phase versions up to 22 kVa, with local and remote power measurement. Knürr DI-STRIP RM® provides safe and reliable power supply in a robust, extruded enclosure.

Remote power measurement module features:

- RM = power measurement (remote)
- Tried, tested and proven DI-STRIP® PDU with integrated local power measurement module.
- Large transparent LCD display.
- Meets the strictest EMC requirements with radiation and irradiation interference.
- Can be set for up to 3 threshold values and unbalanced load monitoring.
- Rotatable displays in 90° steps.
- Automatic background light reduction.
- Protocols: HTTP, SNMP, Syslog.

Knürr DI-Strip® Equipment models in Europe

Full overview:



Sample model



Sample model



Sample model

			Knürr DI-STRIP® equipment models		
Options	Input power	Outputs	Knürr DI-Strip Elementary®	Knürr DI-Strip M® local metered	Knürr DI-Strip RM® remote metered
1 Euro Plug System IEC 320	1x16A up to 3.68kVA	IEC60320 C13 & C19	x	x	x
1 Classic	1x16A up to 3.68kVA	Schuko, France, Switzerland	x		
1 Compact	1x16A up to 3.68kVA	Schuko, France, Switzerland	x	x	x
1 Protector FI	1x16A up to 3.68kVA	Schuko, France, Switzerland	x		
1 Protector LS	1x16A up to 3.68kVA	Schuko, France, Switzerland	x		
1 Protector FI / LS	1x16A up to 3.68kVA	Schuko, France, Switzerland	x		
1 Protector Emergency STOP	1x16A up to 3.68kVA	Schuko, France	x		
1 Protector Emergency STOP FI/LS	1x16A up to 3.68kVA	Schuko, France	x		
1 Power Cleaner	1x16A up to 3.68kVA	Schuko, France	x		
1 Safety Basic	1x16A up to 3.68kVA	Schuko, France, Switzerland	x		
1 Safety Standard	1x16A up to 3.68kVA	Schuko, France, Switzerland	x		
1 Master Slave	1x16A up to 3.68kVA	Schuko, France	x		
1 Combi	1x16A up to 3.68kVA	Schuko, France	x		
1 GST18 Plug System	1x16A, 3x16A up to 11kVA	Schuko, France, IEC60320	x	x	x
1 TriplePower	3x16A up to 11kVA	IEC60320 C13 & C19 Schuko	x	x	x
2 BladePower	1x32A, 3x32A up to 22kVA	IEC60320 C13 & C19	x		
2 PizzaPower	1x32A, 3x32A up to 22kVA	IEC60320 C13 & C19 Schuko	x	x	x
3 HighPower	1x32A, 3x32A up to 22kVA	IEC60320 C13 & C19	x		x



DOS80002

Knürr DI-STRIP® RM

- Real RMS value display for the alternating current per phase
- LCD display rotation in 90° steps
- Display bright/dark switchover
- Warning display for unbalanced load
- Load changes signaling
- Automatic background light dimming
- Cable: 4 m H05VV-F5 G / 4 mm² (Pizza Power)
- Cable: 2,5 m H05VV-F5 G / 2,5 mm² (Triple Power)
- Cable: 2,5 m H05VV-F36 / 1,5 mm² (others)

Data interface:

- The plug strip can be integrated into the network via an RJ45 plug.
- Access is possible without special software via a remote browser.
- Three variable limit values and a warning for unbalanced loads can be specified.
- The module enables access for up to 5 users or administrators; access is password-protected.
- The software displays the name and place of the PDU; this information can be entered by an administrator.
- The user can specify a static IP address or access using DHCP.
- Firmware updates can be made via a web browser.
- Supported protocols: HTTP, SNMP (Traps, SET, GET), Syslog

Material/finish

- PizzaPower model:
Housing: sheet steel, zinc passivated, powder-coated
- Other models:
Housing: closed sheet steel extrusion, zinc passivated, powder-coated texture
Plastic parts: Vampamid 6 0024 VO (UL94), recyclable

Dimensions

- Width: 84 mm (PizzaPower), 44.4 mm (others)
- Height: 60 mm (PizzaPower), 44.4 mm (others)

Color

- PizzaPower model:
Housing: RAL 9005 black
Other models:
Housing: RAL 7035 light gray
Plastic parts: RAL 7021 dark gray

Approvals

- CE label in accordance with Low Voltage Directive 2006/95/EC
- EMC Directive 2004/108/EC
- GS

Supply schedule

- 1 socket strip (PDU) with remote ampere meter
- 1 mounting bracket
- Operating instructions

L	Type	Input values	Input plug	Outputs IEC60320			Order no.	UP
				C 13	C 19	Schuko		
733	DI-STRIP® Compact RM 8	230Vac, 16A	Schuko CEE 7/4			8	03.307.008.1	1 unit
1183	DI-STRIP® Compact RM 17	230Vac, 16A	Schuko CEE 7/4			17	03.307.017.1	1 unit
633	IEC320 RM9	230Vac, 16A	Schuko CEE 7/4	9			03.607.009.1	1 unit
933	IEC320 RM18	230Vac, 16A	Schuko CEE 7/4	18			03.607.018.1	1 unit
1133	DI-STRIP® TriplePower RM	230/400Vac, 16A	IEC60309 3ph/N/PE 6h	24			03.607.825.1	1 unit
1833	DI-STRIP® TriplePower RM	230/400Vac, 16A	IEC60309 3ph/N/PE 6h	45			03.607.845.1	1 unit
1233	DI-STRIP® TriplePower RM	230/400Vac, 16A	IEC60309 3ph/N/PE 6h	18	6		03.607.824.1	1 unit
1833	DI-STRIP® TriplePower RM	230/400Vac, 16A	IEC60309 3ph/N/PE 6h	36	6		03.607.842.1	1 unit
1111	DI-STRIP® PizzaPower® RM	230Vac, 32A	IEC60309 1ph/N/PE 6h	24			03.637.023.1	1 unit
871	DI-STRIP® PizzaPower® RM	230Vac, 32A	IEC60309 1ph/N/PE 6h	12	4		03.637.016.1	1 unit
1168	DI-STRIP® PizzaPower® RM	230Vac, 32A	IEC60309 1ph/N/PE 6h	21	4		03.637.025.1	1 unit
563	DI-STRIP® PizzaPower® RM	230/400Vac, 32A	IEC60309 3ph/N/PE 6h		6		03.637.006.1	1 unit
995	DI-STRIP® PizzaPower® RM	230/400Vac, 32A	IEC60309 3ph/N/PE 6h	6	12		03.637.018.1	1 unit
1022	DI-STRIP® PizzaPower® RM	230/400Vac, 32A	IEC60309 3ph/N/PE 6h	21			03.637.021.1	1 unit
1157	DI-STRIP® PizzaPower® RM	230/400Vac, 32A	IEC60309 3ph/N/PE 6h	18	6		03.637.024.1	1 unit
1751	DI-STRIP® PizzaPower® RM	230/400Vac, 32A	IEC60309 3ph/N/PE 6h	36	6		03.637.042.1	1 unit



DOS80002

Knürr DI-STRIP® M

- With big transparent LCD display
- Effective value display of alternating currents per phase (1-phase or 3-phase, depending on model)
- LCD display rotation in 90° steps
- Display can be switched bright or dark
- Unbalanced-load warning display with 3-phase model
- Load changes signaling
- Automatic background light reduction
- Cable: 4m H05VV-F 5 G 4mm² (PizzaPower M)
- Cable: 2.5m H05VV-F 5 G 2.5mm² (TriplePower M)
- Cable: 2.5m H05VV-F 3 G 1.5mm² (DI-STRIP Compact M, DI-STRIP IEC320 M)

Material/finish

PizzaPower® model:
Housing: Sheet steel, zinc-passivated, powder-coated
Other models:
Housing: closed sheet steel extrusion, zinc-passivated, powder-coated texture
Plastic parts: Vampamid 6 0024 VO (UL94), recyclable

Approvals/certificates

- CE label in accordance with Low Voltage Directive 2006/95/EC
- EMC Directive 2004/108/EC:
EN61326-1, EN61000-3-2, EN61000-3-3
- FCC Class B
- CSA NRTL (PizzaPower m, TriplePower M, IEC320 M)
- CB-Scheme (TriplePower M, DI-STRIP compact M, IEC320M, ampere meter GST18i)

Color

PizzaPower M model:
Housing: RAL 9005 black
Other models:
Housing: RAL 7035 light gray
Plastic parts: RAL 7021 dark gray

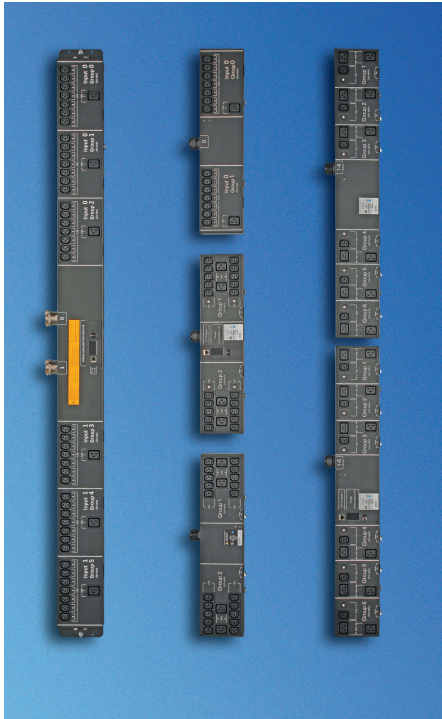
Supply schedule

- 1 socket strip with ampere meter
- 2 mounting brackets
- 2 19" mounting brackets (with 19" installation option)

Note

- Other models (e.g. 19" outputs) on request

L	Type	Input values	Input plug	Outputs IEC60320			Order no.	UP
				C 13	C 19	Schuko		
483	DI-STRIP® PizzaPower® M	230Vac, 32A	IEC60309 1ph/N/PE 6h	7			03.636.007.1	1 unit
933	DI-STRIP® PizzaPower® M	230/400Vac, 32A	IEC60309 3ph/N/PE 6h	21			03.636.021.1	1 unit
1033	DI-STRIP® TriplePower® M	230/400Vac, 16A	IEC60309 3ph/N/PE 6h	21			03.606.821.1	1 unit
1833	DI-STRIP® TriplePower® M	230/400Vac, 16A	IEC60309 3ph/N/PE 6h	45			03.606.845.1	1 unit
1133	DI-STRIP® TriplePower® M	230/400Vac, 16A	IEC60309 3ph/N/PE 6h	18	6		03.606.824.1	1 unit
1733	DI-STRIP® TriplePower® M	230/400Vac, 16A	IEC60309 3ph/N/PE 6h	36	6		03.606.842.1	1 unit
483	DI-STRIP® Compact M	230Vac, 16A	Schuko			6	03.306.006.1	1 unit
483	DI-STRIP® IEC320 M	230Vac, 16A	Schuko	9			03.606.009.1	1 unit
233	DI-STRIP® Ampere Meter	230Vac, 16A	GST18				03.606.200.1	1 unit



Knürr DI-STRIP®

HighPower®

The **Knürr DI-STRIP® HighPower** is a solution for every data center with high power requirements and low space in the rack. The special shape enables space-saving installation in the rack. This means free access to the servers, even with 600 mm wide racks. Maintenance of the servers (e.g. power supply changes) is possible at no further expense.

The Knürr DI-STRIP® product family meets the power distribution requirements of many IT applications and other areas. Specially configured for the growing number of electronic components in network switching racks of server racks. The **DI-STRIP® HighPower** is available with and without remote power measurement (DI-STRIP® HighPower RM).



Knürr DI-STRIP® HighPower Strong points

Flexibility

With or without remote power measurement.
Easy expansion in the rack with tool-less installation.
3 m power cable for more spatial flexibility.

RM model:

Current values can be read via a big transparent LCD display.
Rotating display in 90° steps; the display can always be read the same regardless of the installation direction.
The power measurement module can be integrated into different management programs via different protocols (SNMP, http, Syslog).

High availability

Meets the strictest EMC requirements with radiation and irradiation interference. Robust and stable with a closed sheet steel housing.
Reliable, robust solution.

Extensive certification in acc. with international standard.

RM model:

Different threshold values can be flexibly specified; power values can therefore be monitored and load drops can be signaled.
With 3-phase PDUs the unbalanced load can be monitored, which means the neutral conductor is protected from overloads.

Low operating costs

Especially flat housing extrusion, providing full accessibility to the 19" level with 600 mm wide server racks.
Server power supply changes are very quick and easy.

Quick and easy installation on the rack requires minimum space and shorter installation time.

RM model:

Automatic background light reduction extends the display's service life and reduces power loss.



DOS20153

Knürr DI-STRIP® HighPower

- Flat design provides access to the 19" level, even with 600 mm wide racks.
- Individual backup for outputs (groups with 10 A).
- Outputs divided into groups with max. 20 A per group
- Modular expansion in the rack with tool-less PDU installation.

Additional functions for HighPower RM type (remote metered)

- With big transparent LCD display
- Effective value display of alternating current
- LCD display rotation in 90° steps
- Display can be switched bright or dark
- Load changes signaling
- Automatic background light reduction
- See DI-STRIP RM for technical description for data interface

Material/finish

Housing: Sheet steel, zinc-passivated, powder-coated

Dimensions

Width: 134 mm
Height: 47 mm
Cable: 3 m

Color

Housing: RAL 9005 black

Approvals

- CE label in accordance with Low Voltage Directive 2006/95/EC
- EMC Directive 2004/108/EC
- GS

Supply schedule

- 1 socket strip (PDU)
- 1 integrated remote ampere meter (only HighPower RM)
- 2 mounting bracket
- Operating instructions

L	Type	Input values	Input plug	Outputs IEC60320			Order no.	UP
				C 13	C 19	Schuko		
540	DI-STRIP® HighPower	230Vac, 32A	IEC60309 1ph/N/PE 6h	20	4		03.632.100.8	1 unit
850	DI-STRIP® HighPower	230/400Vac, 32A	IEC60309 3ph/N/PE 6h	6	12		03.632.102.8	1 unit
850	DI-STRIP® HighPower	230/400Vac, 32A	IEC60309 3ph/N/PE 6h	18	6		03.632.103.8	1 unit
540	DI-STRIP® HighPower RM	230Vac, 32A	IEC60309 1ph/N/PE 6h	20	4		03.632.200.8	1 unit
850	DI-STRIP® HighPower RM	230/400Vac, 32A	IEC60309 3ph/N/PE 6h	6	12		03.632.202.8	1 unit
850	DI-STRIP® HighPower RM	230/400Vac, 32A	IEC60309 3ph/N/PE 6h	18	6		03.632.203.8	1 unit

Three Phase Knürr DI-STRIP®

TriplePower®

The **TriplePower®** name represents the performance of our latest development. Die **DI-STRIP® TriplePower®** supplies network racks with three times the normal power. This requirement is generated by the increasingly higher packing densities and constantly rising energy requirements in racks, which are often caused by aptly named "Blade Servers" or 1 U "Pizza Servers", more than 40 of which can be integrated into a Knürr Miracel rack.

The **DI-STRIP® TriplePower®** uses a classic 3-phase feed with 3x16A, which it optimally distributes throughout the whole rack. The 23 U and 41 U standard lengths cover the entire rack height range of the Knürr Smaract2 and Miracel rack families.

In the maximum configuration level, up to 48 users can now be connected to a **DI-STRIP® TriplePower®** (Euro socket strip). With redundant feed, 96A can consequently be provided in a 19" rack with only two **DI-STRIP® TriplePower®**.



DOS20149



DOS20148

Dimensions in mm:
L = Length, S = Switch, n = Number of sockets,
F1 = Standard side, F2 = Design side,
19" = Suitable for 19" installation, Safe = Child-safe

U = Standard height unit, UP = Unit of packaging

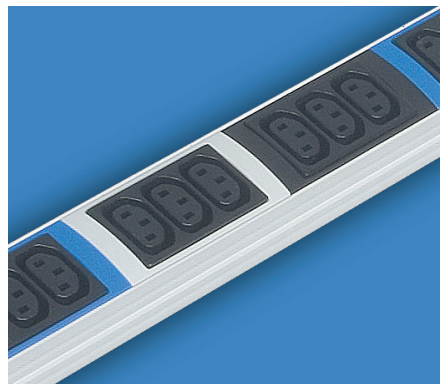
Replace .x with the number of your color combination:
.1 = RAL 7035, .6 = RAL 7035/RAL 2003



1 DOS20131

Knürr DI-STRIP® TriplePower® Strong points

- 1 Cost-conscious**
Quick and easy mounting on the rack extrusion.
Costs reduction with mounting and wiring.
 - 2 Feed**
- 3x16A as standard
- Ideal for implementing redundancy (e.g. 96 A)
 - 3 At a glance**
Phase assignment color coding (L1, L2, L3).
 - 4 Installation**
Optimum distribution over the entire rack height (standard: 23 U and 41 U).
- Technical alternatives**
- For 3-phase GST18 system (see page 2.36).



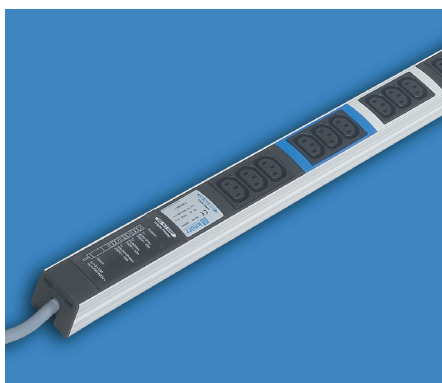
3 DOS20126



2 DOS20147



4 DOS20129



DOS20126

DI-STRIP® TriplePower® Euro Plug-In System, IEC 320 with cable

- Cable: H05VV-F 5 G 2.5 mm²
- Cable: 2.5 m (optional with IEC60309 plug, 3Ph/N/PE 6h)
- Easy mounting on the rack extrusion
- 3x16A feed as standard
- Ideal for implementing redundancy (e.g. 96 A with redundant feed)
- Unmistakable phase assignment color-coding
- Optimum distribution over the entire rack height (23 U and 41 U)
- Alternative for 3-phase GST18 system (see page 170)

- Material/finish**
Housing: closed sheet steel extrusion, zinc-passivated, powder-coated texture
Plastic parts: Vampamid 6 0024 VO (UL94), recyclable

- Dimensions**
Height: 45.5 mm
Housing width: 44.4 mm (= 1 U)

- Approvals/certificates**
- CE label in accordance with Low Voltage Directive 2006/95/EC
- EMC Directive 2004/108/EC
- GS, CSA NRTL/C, CB-scheme

- Color**
Housing: RAL 7035 light gray
Plastic parts: RAL 7021 dark gray

- Load rating**
100-240/173-415 Vac
Input: 3x 16 A
Output: 10 A (C 13)
Output: 16 A (C 19)

- Approval symbols for IEC 320 3-way Euro combinations**
VDE, UR, CSA

- Supply schedule**
1 socket strip
2 mounting bracket

L	S	n	F1	19"	Input values	Input plug	Outputs IEC60320		Order no.	UP
							C 13	C 19		
1033		24	•		230/400Vac, 16A	Open end	24		03.600.024.1	1 unit
1833		48	•		230/400Vac, 16A	Open end	48		03.600.048.1	1 unit
1033		24	•		230/400Vac, 16A	IEC60309 3ph/N/PE 6h	24		03.600.824.1	1 unit
1833		48	•		230/400Vac, 16A	IEC60309 3ph/N/PE 6h	48		03.600.848.1	1 unit
1133		24	•		230/400Vac, 16A	IEC60309 3ph/N/PE 6h	18	6	03.600.524.1	1 unit
1733		42	•		230/400Vac, 16A	IEC60309 3ph/N/PE 6h	36	6	03.600.542.1	1 unit
483		6	•	•	230/400Vac, 16A	IEC60309 3ph/N/PE 6h	6		03.600.506.1	1 unit

Three Phase – Knürr DI-STRIP®

BladePower® PizzaPower®

A new generation of the power distribution units of the DI-STRIP® range now ensures even more power: **BladePower®** and **PizzaPower®** for fail-safe power supply distribution in network racks.

Increasingly higher packing densities and therefore constantly increasing energy requirements in server racks caused by blade servers or 1 U pizza servers will now be handled electrically.

Up to 35 kW dissipated heat can be removed from modern CoolTherm® server racks. But how is the necessary power supplied into the rack, which can cause such power losses?

The PDUs (3x32 A) optimally distribute the required power over the entire rack, with connection of up to 21 consumers possible in the highest configuration level. 192 A can be supplied to the rack with redundant feed.

Knürr DI-STRIP® Strong points

- **Cost-conscious**
Quick and easy installation on the server rack's extrusion.
Costs reduction with mounting and wiring.
- **Feed**
 - Single-phase 32 A and three-phase 32 A.
 - ≤22 kVA
 - Ideal for providing redundancy (e.g. 192 A)
- **Crystal clear assignment**
Unmistakable phase assignment color-coding (L1, L2, L3).
- **Installation**
Optimum distribution of blade center and pizza server supply with easy power distribution unit (PDU) installation.
- **Availability**
Prevention of "Single Point of Failure" with individual fusing.
- **Certification**



DOS20153



DOS20155

Knürr DI-STRIP® BladePower® Technical data

- EC 320 sockets (10 A and 16 A).
- Individually fused via thermal circuit breaker that can be reset in acc. with IEC 60934
- Cable: H05VV-F 5 G 4 mm²
- Cable: 4 m
- With IEC60309 plug, 1Ph/N/PE 6h blue, 3Ph/N/PE 6h red

- **Material/finish**
Housing: sheet steel, zinc passivated, powder-coated
- **Dimensions**
Height: approx. 60 mm
Housing width: 84 mm
- **Color**
Housing: RAL 9005, black

- **Approvals**
 - CE Symbol in accordance with Low Voltage Directive 2006/95/EC
 - EMC Directive 2004/108/EC
 - GS
 - CSA NRTL/C (only without plug)

- **Load rating**
100-240 / 173-415 Vac
Input: 1x32 A or 3x32 A
Output: 10 A / 16 A

- **Supply schedule**
1 socket strip (PDU)
2 mounting bracket
1 19" mounting bracket
(additional with 19" installation option)
Operating instructions

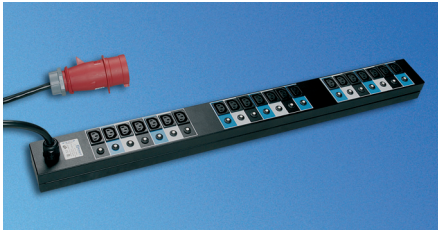
L	S	n	F1	19"	Plug	Model	Order no.	UP
375		5	•	•	•	BladePower® PDU 1x 32 A	03.630.005.1	1 unit
740		15	•		•	BladePower® PDU 3x 32 A	03.630.015.1	1 unit
375		5	•	•		BladePower® PDU 1x 32 A	03.630.805.1	1 unit
740		15	•			BladePower® PDU 3x 32 A	03.630.815.1	1 unit

Dimensions in mm: L = Length, S = Switch, n = Number of sockets, F1 = Standard side, F2 = Design side, 19" = Suitable for 19" installation, Safe = Child-safe, U = Standard height unit, UP = Unit of packaging,

= Express item

Conversion: 1 mm = 0.03937 inch 1 kg = 2.2046 pound

Replace **x** with the number of your color combination:
.1 = RAL 7035, .6 = RAL 7035/RAL 2003



DOS20158



DOS20159

Knürr DI-STRIP® PizzaPower® Technical data

- Individually fused via thermal circuit breaker that can be reset in acc. with IEC 60934
- Cable: H05VV-F 5 G 4 mm²
- Cable: 4 m

Material/finish

Housing: sheet steel, zinc-passivated, powder-coated

Dimensions

Height: approx. 60 mm
Housing width: 84 mm
Height with cable: approx. 176 mm

Color

Housing: RAL 9005, black

Approvals

- CE label in accordance with Low Voltage Directive 2006/95/EC
- EMC Directive 2004/108/EC
- GS
- CSA NRTL/C (only without plug)

Load rating

100-240 / 173-415 Vac
Input: 1x32 A or 3x32 A
Output: 10 A (C 13)
Output: 16 A (C 19)

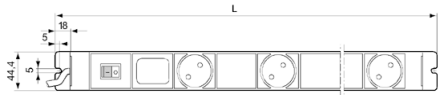
Supply schedule

1 socket strip (PDU)
2 mounting bracket
1 19" mounting bracket
(additional with 19 installation option)
Operating instructions

L	S	n	F1	19"	Input values	Input plug	Outputs IEC60320		Order no.	UP
							C 13	C 19		
400		7	●		230Vac, 32A	IEC60309 1ph/N/PE 6h	7		03.631.007.1	1 unit
400		7	●		230Vac, 32A	Open end	7		03.631.807.1	1 unit
720		16	●		230Vac, 32A	IEC60309 1ph/N/PE 6h	12	4	03.631.124.1	1 unit
960		24	●		230Vac, 32A	IEC60309 1ph/N/PE 6h	24		03.631.240.1	1 unit
1017		25	●		230Vac, 32A	IEC60309 1ph/N/PE 6h	21	4	03.631.214.1	1 unit
933		21	●		230/400Vac, 32A	IEC60309 3ph/N/PE 6h	21		03.631.021.1	1 unit
933		21	●		230/400Vac, 32A	Open end	21		03.631.821.1	1 unit
408		6	●		230/400Vac, 32A	IEC60309 3ph/N/PE 6h	6		03.631.006.1	1 unit
939		21	●		230/400Vac, 32A	IEC60309 3ph/N/PE 6h	9	12	03.631.912.1	1 unit
1362		36	●		230/400Vac, 32A	IEC60309 3ph/N/PE 6h	36		03.631.360.1	1 unit
1002		24	●		230/400Vac, 32A	IEC60309 3ph/N/PE 6h	18	6	03.631.186.1	1 unit

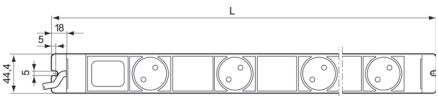


DOS00403



DOS00260

With switch



DOS00261

Without switch

Knürr DI-STRIP® Classic Standard DIN 49 440

- Optionally with lit switch, 2-pole switching
- Socket rotation: 45°
- Cable: H05VV-F 3G 1.5 mm²
- Optionally with Euro plug, IEC320 for UPS application

Material/finish

Housing: closed sheet steel extrusion, zinc-passivated, powder-coated texture
Plastic parts: Vampamid 6 0024 VO (UL94)
Internal conductor: full-length busbar, brass

Dimensions

Socket spacing: 100 mm
Height: 45.5 mm
Housing width: 44.4 mm (= 1 U)
Cable 2.5 m

Approvals/certificates

- CE label in accordance with Low Voltage Directive 2006/95/EC
- EMC Directive 2004/108/EC
- GS
- CB-scheme
- VDE

Color

RAL 7035 light gray

Load rating

100-240 Vac/16 A

Supply schedule

1 socket strip
2 mounting bracket

Dimensions in mm: L = Length, S = Switch, n = Number of sockets,
F1 = Standard side, F2 = Design side, 19" = Suitable for 19" installation,
Safe = Child-safe, U = Standard height unit, UP = Unit of packaging,

= Express item

Conversion: 1 mm = 0.03937 inch 1 kg = 2.2046 pound

Replace x with the number of your color combination:
.1 = RAL 7035, .6 = RAL 7035/RAL 2003

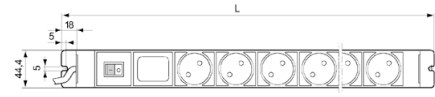
L	S	n	F1	F2	19"	Safe	Model	Order no.	UP
1783		17	●					03.300.067.1	1 unit
1383		13	●					03.300.063.1	1 unit
983		9	●					03.300.059.1	1 unit
583		5	●					03.300.055.1	1 unit
1733	●	16	●				With switch	03.302.066.1	1 unit
1333	●	12	●				With switch	03.302.062.1	1 unit
933	●	8	●				With switch	03.302.058.1	1 unit
533	●	4	●				With switch	03.302.054.1	1 unit

Emerson Network Power Rack PDUs



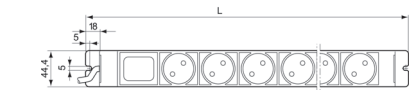
DOS00401

With switch



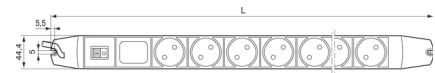
DOS00262

With switch



DOS20020

Without switch



DOS20021

With switch



DOS00263

Without switch

Knürr DI-STRIP® Compact Standard DIN 49 440

- Optionally with lit switch, 2-pole switching
- 19" installation option (with length 483 mm)
- 2 versions: Standard side panel or Design side panel
- Socket rotation: 45°
- Cable: H05VV-F 3G 1.5 mm²
- Molded right angle plug
- Optionally with Euro plug, IEC320 for UPS applications

Material/finish

Housing: closed sheet steel extrusion, zinc-passivated, powder-coated texture
Plastic parts: Vampamid 6 0024 VO (UL94), recyclable
Internal conductor: full-length busbar, brass

Dimensions

Socket spacing: 50 mm
Height: 45.5 mm
Housing width: 44.4 mm (= 1 U)
Cable 2.5 m

Approvals/certificates

- CE label in accordance with Low Voltage Directive 2006/95/EC
- EMC Directive 2004/108/EC
- GS
- CB-scheme
- VDE

Color combination

Final digit of order number .1:
RAL 7035 light gray
Final digit of order number .6:
Housing: RAL 2003 pastel orange
Plastic parts: RAL 7035 light gray

Load rating

100-240 Vac/16 A

Supply schedule

1 socket strip
2 mounting bracket

L	S	n	F1	F2	19"	Safe	Model	Order no.	UP
883		15	•					03.300.015.x	1 unit
732		11		•				03.300.111.x	1 unit
683		11	•					03.300.011.x	1 unit
532		7		•		•		03.301.107.x	1 unit
532		7		•				03.300.107.x	1 unit
483		7	•		•			03.300.007.x	1 unit
483		8	•		•			03.300.008.1	1 unit
382		4		•		•		03.301.104.x	1 unit
382		4		•				03.300.104.x	1 unit
333		4	•					03.300.004.x	1 unit
883	•	14	•				With switch	03.302.014.x	1 unit
732	•	10		•			With switch	03.302.110.x	1 unit
683	•	10	•				With switch	03.302.010.x	1 unit
532	•	6		•		•	With switch	03.303.106.x	1 unit
532	•	6		•			With switch	03.302.106.x	1 unit
483	•	6	•		•		With switch	03.302.006.x	1 unit
483		7	•		•		With switch	03.302.007.1	1 unit
382	•	3		•		•	With switch	03.303.103.x	1 unit
382	•	3		•			With switch	03.302.103.x	1 unit
333	•	3	•				With switch	03.302.003.x	1 unit

Knürr DI-STRIP® Compact UPS Standard DIN 49 440

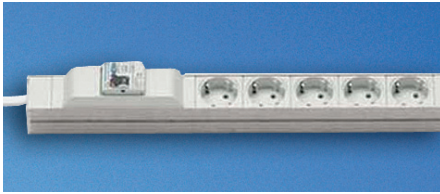
L	S	n	F1	19"	Input values	Input plug	Outputs Schuko CEE7/4	Order no.	UP
483		8	•	•	230Vac, 10A	ICE60320 Sheet E	8	03.300.308.1	1 unit
483		8	•	•	230Vac, 16A	ICE60320 Sheet I	8	03.300.408.1	1 unit

Dimensions in mm: L = Length, S = Switch, n = Number of sockets,
F1 = Standard side, F2 = Design side, 19" = Suitable for 19" installation,
Safe = Child-safe, U = Standard height unit, UP = Unit of packaging,

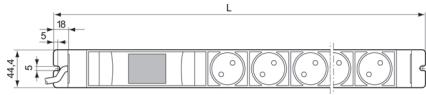
= Express item

Conversion: 1 mm = 0.03937 inch 1 kg = 2.2046 pound

Replace .x with the number of your color combination:
.1 = RAL 7035, .6 = RAL 7035/RAL 2003



DOS20065 With fault current circuit breaker



DOS00264 With fault current circuit breaker

Knürr DI-STRIP® Protector FI Standard DIN 49 440

Protector FI

- RCCB for user protection
- Protection with indirect contact as error protection by switching off with inadmissible high contact voltage through contact with electrical equipment
- Protection with direct contact as back-up protection
- Residual operating current $I_g = 10$ mA for alternating and pulsating direct fault current
- 19" installation option (with length 483 mm)
- Socket rotation: 45°
- Cable: H05VV-F 3G 1.5 mm²
- Molded right angle plug

Material/finish

- Housing: closed sheet steel extrusion, zinc-passivated, powder-coated texture
- Plastic parts: Vampamid 6 0024 VO (UL94), recyclable
- Internal conductor: full-length busbar, brass

Dimensions

- Socket spacing: 50 mm
- Height: 78 mm
- Housing width: 44.4 mm (= 1 U)
- Cable 2.5 m

Approvals/certificates

- CE label in accordance with Low Voltage Directive 2006/95/EC
- EMC Directive 2004/108/EC
- GS
- CB-scheme

Color combination

- Final digit of order number .1:
- RAL 7035 light gray
- Plastic parts: RAL 7035 light gray

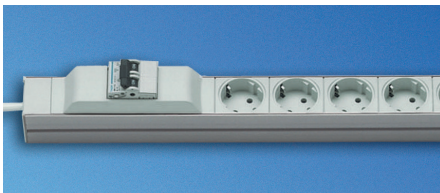
Load rating

- 100-240 Vac/16 A

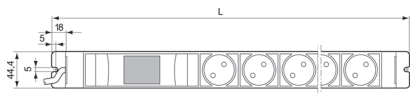
Supply schedule

- 1 socket strip
- 2 mounting bracket

L	S	n	F1	F2	19"	Safe	Model	Order no.	UP
883		13	•					03.304.013.1	1 unit
683		9	•					03.304.009.1	1 unit
483		5	•		•			03.304.005.1	1 unit



DOS00692 With circuit breaker



DOS00264 With circuit breaker

Knürr DI-STRIP® Protector LS Standard DIN 49 440

Protector LS

- Circuit breaker for overload and short circuit
- Protects cables and feeds with rapid switching off with short circuit and defined delayed cutoff with overload
- Circuit breaker: 16 A
- Tripping characteristic, type B, 2-pole
- 19" installation option (with length 483 mm)
- Socket rotation: 45°
- Cable: H05VV-F 3G 1.5 mm²
- Molded right angle plug

Material/finish

- Housing: closed sheet steel extrusion, zinc-passivated, powder-coated texture
- Plastic parts: Vampamid 6 0024 VO (UL94), recyclable
- Internal conductor: full-length busbar, brass

Dimensions

- Socket spacing: 50 mm
- Height: 78 mm
- Housing width: 44.4 mm (= 1 U)
- Cable 2.5 m

Approvals/certificates

- CE Symbol in accordance with Low Voltage Directive 2006/95/EC
- EMC Directive 2004/108/EC
- GS
- CB-scheme
- VDE

Color combination

- Final digit of order number .1:
- RAL 7035 light gray
- Plastic parts: RAL 7035 light gray

Load rating

- 100-240 Vac/16 A

Supply schedule

- 1 socket strip
- 2 mounting bracket

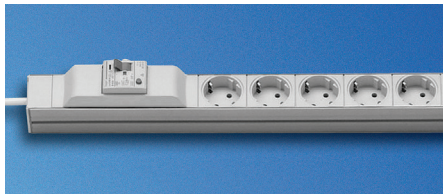
L	S	n	F1	F2	19"	Safe	Model	Order no.	UP
883		13	•					03.308.013.1	1 unit
683		9	•					03.308.009.1	1 unit
483		5	•		•			03.308.005.1	1 unit

Dimensions in mm: L = Length, S = Switch, n = Number of sockets, F1 = Standard side, F2 = Design side, 19" = Suitable for 19" installation, Safe = Child-safe, U = Standard height unit, UP = Unit of packaging,

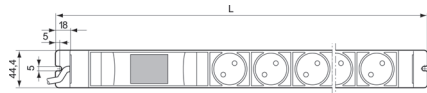
= Express item

Conversion: 1 mm = 0.03937 inch 1 kg = 2.2046 pound

Replace *x* with the number of your color combination:
.1 = RAL 7035, .6 = RAL 7035/RAL 2003



DOS00693



DOS00264

Knürr DI-STRIP® Protector FI / LS Standard DIN 49 440

Protector FI / LS

- RCCB and circuit breaker
- Provides a combination of user, overload and short circuit protection
- Residual operating current $I_g = 30$ mA for alternating and pulsating direct fault current
- Circuit breaker: 16 A
- Tripping characteristic, type B, 2-pole

- 19" installation option (with length 483 mm)
- Socket rotation: 45°
- Cable: H05VV-F 3G 1.5 mm²
- Molded right angle plug

Material/finish

Housing: Closed sheet steel extrusion, zinc-passivated, powder-coated texture
 Plastic parts: Vampamid 6 0024 VO (UL94), recyclable
 Internal conductor: full-length busbar, brass

Dimensions

Socket spacing: 50 mm
 Height: 78 mm
 Housing width: 44.4 mm (= 1 U)
 Cable 2.5 m

Approvals/certificates

- CE label in accordance with Low Voltage Directive 2006/95/EC
- EMC Directive 2004/108/EC
- GS
- CB-scheme

Color combination

Final digit of order number .1:
 RAL 7035 light gray
 Plastic parts: RAL 7035 light gray

Load rating

100-240 Vac/16 A

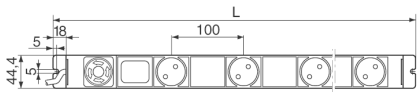
Supply schedule

- 1 socket strip
- 2 mounting bracket

L	S	n	F1	F2	19"	Safe	Model	Order no.	UP
883		13	•					03.310.013.1	1 unit
683		9	•					03.310.009.1	1 unit
483		5	•		•			03.310.005.1	1 unit

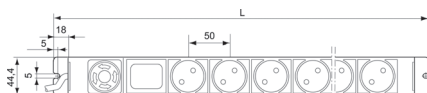


DOS20059



Classic with emergency stop switch

DOS00486



Protector with emergency stop switch

DOS00487

Knürr DI-STRIP® Protector Emergency STOP Standard DIN 49 440

- With 2-pole emergency stop switch for user protection
- For protecting operating personnel
- For manual emergency switching off of the connected consumers
- Phase and neutral conductors are safely separated
- Switch must be specifically unlocked to restart
- 19" installation option (with length 483 mm)
- Socket rotation: 45°
- Cable: H05VV-F 3G 1.5 mm²
- Molded right angle plug

Housing width: 44.4 mm (= 1 U)
 Cable 2.5 m

Approvals/certificates

- CE Symbol in accordance with Low Voltage Directive 2006/95/EC
- EMC Directive 2004/108/EC
- GS
- CB-scheme
- VDE

Color combinations

Final digit of order number .1:
 RAL 7035 light gray
 Plastic parts: RAL 7035 light gray

Load rating

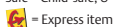
100-240 Vac/16 A

Supply schedule

- 1 socket strip
- 2 mounting bracket

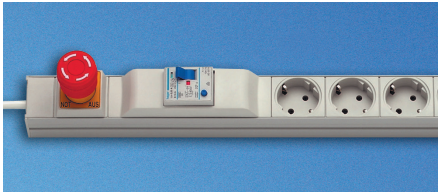
L	S	n	F1	F2	19"	Safe	Model	Order no.	UP
683		10	•				Compact	03.326.010.1	1 unit
483		6	•		•		Compact	03.326.006.1	1 unit
1333		12	•				Classic	03.326.062.1	1 unit
933		8	•				Classic	03.326.058.1	1 unit

Dimensions in mm: L = Length, S = Switch, n = Number of sockets, F1 = Standard side, F2 = Design side, 19" = Suitable for 19" installation, Safe = Child-safe, U = Standard height unit, UP = Unit of packaging,

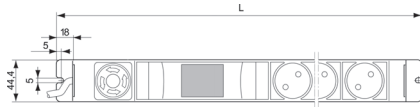


Conversion: 1 mm = 0.03937 inch 1 kg = 2.2046 pound

Replace x with the number of your color combination:
 .1 = RAL 7035, .6 = RAL 7035/RAL 2003



DOS00456



DOS00488

Knürr DI-STRIP® Protector Emergency Stop FI/LS Standard DIN 49 440

- With 2-pole emergency stop switch for user protection
- For protecting operating personnel
- For manual emergency switching off of the connected consumers
- Phase and neutral conductors are safely separated
- Switch must be specifically unlocked to restart
- Socket rotation: 45°
- Cable: H05VV-F 3G 1.5 mm²
- Molded right angle plug

- Material/finish**
 Housing: closed sheet steel extrusion, zinc-passivated, powder-coated texture
 Plastic parts: Vampamid 6 0024 VO (UL94), recyclable
 Internal conductor: full-length busbar, brass

- Dimensions**
 Socket spacing:
 Compact: 50 mm
 Height: 101 mm
 Housing width: 44.4 mm (= 1 U)
 Cable 2.5 m

- Approvals/certificates**
 - CE label in accordance with Low Voltage Directive 2006/95/EC
 - EMC Directive 2004/108/EC
 - GS
 - CB-scheme

- Color combinations**
 Final digit of order number .1:
 RAL 7035 light gray
 Plastic parts: RAL 7035 light gray

- Additionally:**
 With 2-pole fault current switch and circuit breaker
 Provides a combination of user, overload and short circuit protection

- Load rating**
 100-240Vac/16 A

- Supply schedule**
 1 socket strip
 2 mounting bracket

L	S	n	F1	F2	19"	Safe	Model	Order no.	UP
683		8	•					03.328.008.1	1 unit



DOS20061



DOS00266

Knürr DI-STRIP® Power Cleaner Standard DIN 49 440

- High-frequency glitches are generally caused by switching processes in an operation from 100 kHz to 5 MHz. This high-frequency rate overloads the mains frequency and affects adjacent electronic equipment. The mains filter attenuates this high-frequency rate.
- The attenuation behavior is harmonized with the typical interference spectrum.
- The mains filter works in both directions. This means that glitches from the equipment to the socket strip are also filtered from the mains.
- 19" installation option (with length 483 mm)
- Socket rotation: 45°
- Cable: H05VV-F 3G 1.5 mm²
- Molded right angle plug

- Material/finish**
 Housing: closed sheet steel extrusion, zinc-passivated, powder-coated texture
 Plastic parts: Vampamid 6 0024 VO (UL94), recyclable
 Internal conductor: full-length busbar, brass

- Dimensions**
 Socket spacing: 50 mm
 Height: 45.5 mm
 Housing width: 44.4 mm (= 1 U)
 Cable 2.5 m

- Approvals/certificates**
 - CE label in accordance with Low Voltage Directive 2006/95/EC
 - EMC Directive 2004/108/EC
 - GS
 - CB-scheme

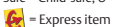
- Color combination**
 Final digit of order number .1:
 RAL 7035 light gray
 Final digit of order number .6:
 Housing: RAL 2003 pastel orange
 Plastic parts: RAL 7035 light gray

- Technical data**
 Nominal voltage: max. 250 Vac, 50 Hz
 Nominal current: max. 16 A
 Filter in acc. with VDE 0565-3 (EN 60939-1)

- Supply schedule**
 1 socket strip
 2 mounting bracket
 2 19" mounting bracket (additional with 19" installation option)

L	S	n	F1	F2	19"	Safe	Model	Order no.	UP
883		13	•					03.312.013.x	1 unit
683		9	•					03.312.009.x	1 unit
483		5	•		•			03.312.005.x	1 unit

Dimensions in mm: L = Length, S = Switch, n = Number of sockets,
 F1 = Standard side, F2 = Design side, 19" = Suitable for 19" installation,
 Safe = Child-safe, U = Standard height unit, UP = Unit of packaging,



Conversion: 1 mm = 0.03937 inch 1 kg = 2.2046 pound

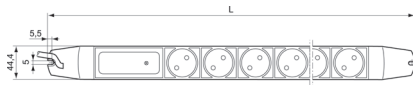
Replace **x** with the number of your color combination:
 .1 = RAL 7035, .6 = RAL 7035/RAL 2003

Emerson Network Power Rack PDUs



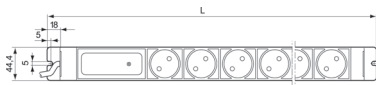
DOS20068

With overvoltage protection



DOS00306

With overvoltage protection



DOS00270

With overvoltage protection

Knürr DI-STRIP® Safety Basic Standard DIN 49 440

- For protecting against transient overvoltages from the mains, which, for example, are caused by switching machines on and off.
- With critical overvoltages the mains is separated.
- Once the safety arrester has been triggered the green function display goes out. The socket strip can then no longer be used.

Send the socket strip to the manufacturer for the safety arrester to be replaced!

The safety effect of the type 3 test category and requirements category "D" is to protect the equipment, i.e. precision protection.

The protection devices of the test and requirements categories 1 and 2 and B and C must be preconnected in the building installation to ensure optimum protection.

- 19" installation option (with length 483 mm)
- Socket rotation: 45°
- Cable: H05VV-F 3G 1.5 mm²
- Molded right angle plug

Material/finish

Housing: closed sheet steel extrusion, zinc-passivated, powder-coated texture
Plastic parts: Vampamid 6 0024 VO (UL94), recyclable
Internal conductor: full-length busbar, brass

Dimensions

Socket spacing: 50 mm
Height: 45.5 mm
Housing width: 44.4 mm (= 1 U)

Approvals/certificates

- CE label in accordance with Low Voltage Directive 2006/95/EC
- EMC Directive 2004/108/EC
- GS
- CB-scheme

Color combination

Final digit of order number .1:
RAL 7035 light gray
Final digit of order number .6:
Housing: RAL 2003 pastel orange
Plastic parts: RAL 7035 light gray

Technical data

Test category: Type 3
- In acc. with DIN EN 61643-11
Requirements class: D
- In acc. with VDE 0675-6
Mains voltage: 230 VAC
Nominal current: max. 16 A
Cut-off discharge current (8/20 μs): 10 kA
Response time: < 25 ns
Protection level
(with 100 A varistor peak current):
- L with respect to N: < 800 V
- L/N with respect to PE: < 1500 V

Supply schedule

1 socket strip
2 mounting bracket

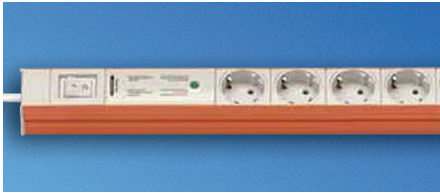
L	S	n	F1	F2	19"	Safe	Model	Order no.	UP
732		10		●				03.316.110.1	1 unit
683		10	●					03.316.010.x	1 unit
532		6		●		●		03.317.106.1	1 unit
532		6		●				03.316.106.1	1 unit
483		6	●		●			03.316.006.x	1 unit
432		4		●		●		03.317.104.1	1 unit
432		4		●				03.316.104.1	1 unit
383		4	●					03.316.004.1	1 unit

Dimensions in mm: L = Length, S = Switch, n = Number of sockets,
F1 = Standard side, F2 = Design side, 19" = Suitable for 19" installation,
Safe = Child-safe, U = Standard height unit, UP = Unit of packaging,

= Express item

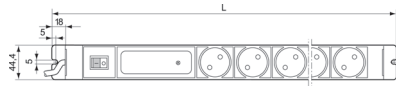
Conversion: 1 mm = 0.03937 inch 1 kg = 2.2046 pound

Replace .x with the number of your color combination:
.1 = RAL 7035, .6 = RAL 7035/RAL 2003



DOS20069

With overvoltage protection and mains filter



DOS00307

With overvoltage protection and mains filter



DOS00271

Knürr DI-STRIP® Safety Standard Standard DIN 49 440

- The "Safety Standard" models consist of a combined overvoltage (surge) protection/mains filter element.
- For protecting against transient overvoltages from the mains, which, for example, are caused by switching machines on and off.
- With critical overvoltages the mains is separated.
- Once the safety arrester has been triggered the green function display goes out. The socket strip can then no longer be used. Send the socket strip to the manufacturer for the safety arrester to be replaced!
- The safety effect of the type 3 test category and requirements category "D" is to protect the equipment, i.e. precision protection. The protection devices of the test and requirements categories 1 and 2 and B and C must be preconnected in the building installation to ensure optimum protection.
- High-frequency glitches are generally caused by switching processes in an operation from 100 kHz to 5 MHz.
- This high-frequency rate overloads the mains frequency and affects adjacent electronic equipment. The mains filter attenuates this high-frequency rate.
- The attenuation behavior is harmonized with the typical interference spectrum.
- 19" installation option (with length 483 mm)
- Socket rotation: 45°
- Cable: HO5VV-F 3G 1.5 mm²
- Molded right angle plug

Material/finish

Housing: closed sheet steel extrusion, zinc-passivated, powder-coated texture
Plastic parts: Vampamid 6 0024 VO (UL94), recyclable
Internal conductor: full-length busbar, brass

Dimensions

Socket spacing: 50 mm
Height: 45.5 mm
Housing width: 44.4 mm (= 1 U)
Cable 2.5 m

Approvals/certificates

- CE label in accordance with Low Voltage Directive 2006/95/EC
- EMC Directive 2004/108/EC
- GS
- CB-scheme

Color combination



Final digit of order number .1:
RAL 7035 light gray
Final digit of order number .6:
Housing: RAL 2003 pastel orange
Plastic parts: RAL 7035 light gray

Technical data


Mains voltage: 230 VAC
Nominal current: max. 16 A
Cut-off discharge current (8/20 μs): 10 kA
Response time: < 25 ns
Protection level
(with 100 A varistor peak current):
- L with respect to N: < 800 V
- L/N with respect to PE: < 1500 V
Overvoltage protection
- Test category: Type 3
in acc. with DIN EN61643-11
- Feature class: D
- In acc. with VDE 0675-6
Mains filter
- In acc. with VDE 0565 (EN 60939)

Supply schedule

1 socket strip
2 mounting bracket

L	S	n	F1	F2	19"	Safe	Model	Order no.	UP
883	•	13	•				With switch	03.318.013.x	1 unit
732	•	9		•		•	With switch	03.319.109.x	1 unit
732	•	9		•			With switch	03.318.109.x	1 unit
683	•	9	•				With switch	03.318.009.x	1 unit 
532	•	5		•		•	With switch	03.319.105.x	1 unit
532	•	5		•			With switch	03.318.105.x	1 unit
483	•	5	•		•		With switch	03.318.005.x	1 unit 

Dimensions in mm: L = Length, S = Switch, n = Number of sockets,
F1 = Standard side, F2 = Design side, 19" = Suitable for 19" installation,
Safe = Child-safe, U = Standard height unit, UP = Unit of packaging,

 = Express item

Conversion: 1 mm = 0.03937 inch 1 kg = 2.2046 pound

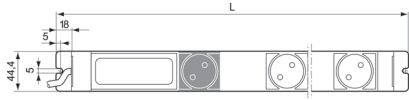
Replace .x with the number of your color combination:
.1 = RAL 7035, .6 = RAL 7035/RAL 2003

Emerson Network Power Rack PDUs



DOS20070

With master-slave module



DOS00268

With master-slave module

Knürr DI-STRIP® Master-Slave Standard DIN 49 440

- If the master equipment is switched, the slave sockets are also switched (together, with a short delay to the master). This means convenient switching on and off of several hard to access devices. Switching thresholds can be set from outside via potentiometer.

- Note:

- The master equipment power consumption must be continuously above the switching-on threshold. When switching off the master consumer, the power consumption must fall below the switch-off threshold.

- 19" installation option (with length 483 mm)
- Socket rotation: 45°
- Cable: H05VV-F 3G 1.5 mm²
- Molded right angle plug

Material/finish

Housing: closed sheet steel extrusion, zinc-passivated, powder-coated texture
 Plastic parts: Vampamid 6 0024 VO (UL94), recyclable
 Internal conductor: full-length busbar, brass

Dimensions

Socket spacing: 50 mm
 Height: 45.5 mm
 Housing width: 44.4 mm (= 1 U)
 Cable 2.5 m

Approvals/certificates

- CE label in accordance with Low Voltage Directive 2006/95/EC
- EMC Directive 2004/108/EC
- GS
- CB-scheme

Color combination

Final digit of order number .1:
 RAL 7035 light gray
 Plastic parts: RAL 7035 light gray

Load rating

Max. 250 Vac/16 A

Technical data


Switching threshold setting range
 On: 20 mA - 200 mA (approx. 55 mA delivery status)
 Off: 16 mA - 160 mA (approx. 44 mA delivery status)
 Switching delay: 550 ms +/- 20 %
 Electronic module: 2-pole switching

Supply schedule

- 1 socket strip
- 2 mounting bracket

L	S	n	F1	F2	19"	Safe	Model	Order no.	UP
683		9	•					03.314.009.1	1 unit
483		5	•		•			03.314.005.1	 1 unit

Dimensions in mm: L = Length, S = Switch, n = Number of sockets,
 F1 = Standard side, F2 = Design side, 19" = Suitable for 19" installation,
 Safe = Child-safe, U = Standard height unit, UP = Unit of packaging,

 = Express item

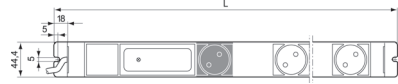
Conversion: 1 mm = 0.03937 inch 1 kg = 2.2046 pound

Replace .x with the number of your color combination:
 .1 = RAL 7035, .6 = RAL 7035/RAL 2003

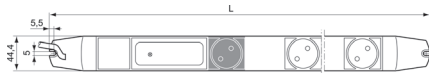


DOS00325

With master-slave
overvoltage protection
and mains filter



DOS00272



DOS00273

With master-slave
overvoltage protection
and mains filter

Knürr DI-STRIP® Combi Standard DIN 49 440

- Master-slave with overvoltage protection and mains filter
- Automatic consumer switching
- Combines Master-Slave (page 7.16) and Safety Standard (page 7.15) functions
- Socket rotation: 45°
- Cable: H05VV-F 3G 1.5 mm²
- Molded right angle plug

Material/finish

Housing: closed sheet steel extrusion, zinc-passivated, powder-coated texture
Plastic parts: Vampamid 6 0024 VO (UL94), recyclable
Internal conductor: full-length busbar, brass

Dimensions

Socket spacing: 50 mm
Height: 45.5 mm
Housing width: 44.4 mm (= 1 U)
Cable 2.5 m

Approvals/certificates

- CE Symbol in accordance with Low Voltage Directive 2006/95/EC
- EMC Directive 2004/108/EC
- GS
- CB-scheme

Color combination


Final digit of order number .1:
RAL 7035 light gray
Plastic parts: RAL 7035 light gray

Technical data


Overvoltage protection and mains filter:
Mains voltage: max. 250 Vac
Nominal current: 16 A
Requirements class: D (precision protection in acc. with VDE 0675)
Protection level (8/20 µs wave):
Max. 10 kA
Protection level (1.5/50 µs wave): < 1500 V (L + N against PE)
Master-slave function:
Switching threshold setting range
On: 20 mA - 200 mA (approx. 55 mA delivery status)
Off: 16 mA - 160 mA (approx. 44 mA delivery status)
Switching delay: 550 ms +/- 20 %
Electronic module: 2-pole switching

Supply schedule

1 socket strip
2 mounting bracket

L	S	n	F1	F2	19"	Safe	Model	Order no.	UP
782		9		•				03.320.109.1	1 unit
733		9	•					03.320.009.1	1 unit
582		5		•		•		03.321.105.1	1 unit
582		5		•				03.320.105.1	1 unit
533		5	•					03.320.005.1	1 unit 

Dimensions in mm: L = Length, S = Switch, n = Number of sockets,
F1 = Standard side, F2 = Design side, 19" = Suitable for 19" installation,
Safe = Child-safe, U = Standard height unit, UP = Unit of packaging,

 = Express item

Conversion: 1 mm = 0.03937 inch 1 kg = 2.2046 pound

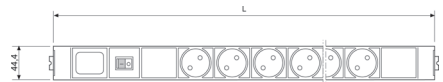
Replace *x* with the number of your color combination:
.1 = RAL 7035, .6 = RAL 7035/RAL 2003



DOS20060

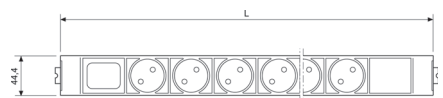


DOS00663



DOS20045

With switch



DOS20046

Without switch

Knürr DI-STRIP® GST18 Plug System (Wieland) Compact Standard DIN 49 440

- Quick and efficient plug connection system
- Plug-in electro-installation in place of conventional wiring
- Speed:
 - With easy pre-configured element plugging together
- Flexibility:
 - With cable (cable length)
- Rational:
 - Easy exchange of socket strips, without extensive cabling
- Safety:
 - Faulty installations are ruled out with plug system
- Space-saving:
 - Use of protection and switching functions can be extended with further cabling without and plug space loss (max. load rating 16 A)

Material/finish

Housing: closed sheet steel extrusion, zinc-passivated, powder-coated texture
 Plastic parts: Vampamid 6 0024 VO (UL94), recyclable
 Internal conductor: full-length busbar, brass

Dimensions

Socket spacing: 50 mm
 Height: 45.5 mm
 Housing width: 44.4 mm (= 1 U)

Approvals/certificates

- CE Symbol in accordance with Low Voltage Directive 2006/95/EC
- EMC Directive 2004/108/EC
- GS
- CB-scheme
- VDE

Color combination

Final digit of order number .1:
 RAL 7035 light gray
 Plastic parts: RAL 7035 light gray

Load rating

100-240 Vac/16 A

Supply schedule

1 socket strip
 2 mounting bracket

L	S	n	F1	F2	19"	Safe	Model	Order no.	UP
583	●	6	●				With switch	03.302.206.1	1 unit
433	●	3	●				With switch	03.302.203.1	1 unit
533		7	●					03.300.207.1	1 unit
383		4	●					03.300.204.1	1 unit



DOS20072

Knürr DI-STRIP® Safety Basic with GST18 plug system

- With overvoltage protection
- Technical description, see page 2.34

L	S	n	F1	F2	19"	Safe	Model	Order no.	UP
433		4						03.316.204.1	1 unit



DOS20073

Knürr DI-STRIP® Safety Standard with GST18 plug system

- With overvoltage (surge) protection, with integrated mains filter and lit switch
- Technical description, see page 2.35

L	S	n	F1	F2	19"	Safe	Model	Order no.	UP
583		5						03.318.205.1	1 unit

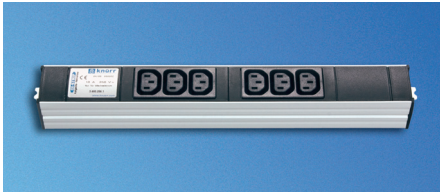


DOS00464

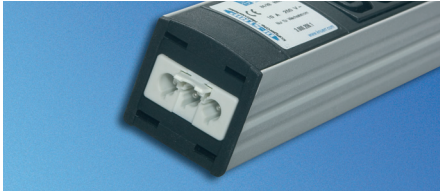
Knürr DI-STRIP® Master Slave with GST18 plug system

- Technical description, see page 2.36

L	S	n	F1	F2	19"	Safe	Model	Order no.	UP
533		5						03.314.205.1	1 unit

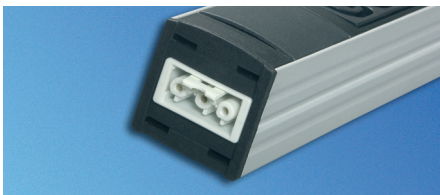


DOS20112



DOS20107

Input



DOS20106

Output for further cabling

Knürr DI-STRIP® Euro Plug System, IEC 320 with GST18 plug system

- With 3-way Euro combinations of IEC 320 sockets
- Without fusing

Material/finish

Housing: closed sheet steel extrusion, zinc-passivated, powder-coated texture
Plastic parts: Vampamid 6 0024 VO (UL94), recyclable

Dimensions

Socket spacing: 24 mm
Height: 45.5 mm
Housing width: 44.4 mm (= 1 U)

Approvals/certificates

- CE Symbol in accordance with Low Voltage Directive 2006/95/EC
- EMC Directive 2004/108/EC
- GS
- CSA NRTL/C
- CB-scheme

Color

Housing: RAL 7035 light gray
Plastic parts: RAL 7021 dark gray

Load rating

100-240 Vac/10 A

Approval symbols for IEC 320 3-way Euro combinations

VDE, UR, CSA

Supply schedule

- 1 socket strip
- 2 mounting bracket

L	S	n	F1	F2	19"	Safe	Model	Order no.	UP
383		6	•					03.600.206.1	1 unit



DOS20110

Knürr DI-STRIP® Safety Basic Euro Socket System IEC 320 with GST18 plug system

- With overvoltage protection
- Technical description, see page 2.34

L	S	n	F1	F2	19"	Safe	Model	Order no.	UP
483		6						03.616.206.1	1 unit



DOS20109

Knürr DI-STRIP® Safety Standard with GST18 Plug System

- With overvoltage (surge) protection with integrated mains filter
- Technical description, see page 2.35

L	S	n	F1	F2	19"	Safe	Model	Order no.	UP
483		6						03.618.206.1	1 unit



DOS20108

Knürr DI-STRIP® Power Cleaner with GST18 plug system

- Technical description, see page 2.33

L	S	n	F1	F2	19"	Safe	Model	Order no.	UP
483		6						03.612.206.1	1 unit

Dimensions in mm: L = Length, S = Switch, n = Number of sockets, F1 = Standard side, F2 = Design side, 19" = Suitable for 19" installation, Safe = Child-safe, U = Standard height unit, UP = Unit of packaging,

= Express item

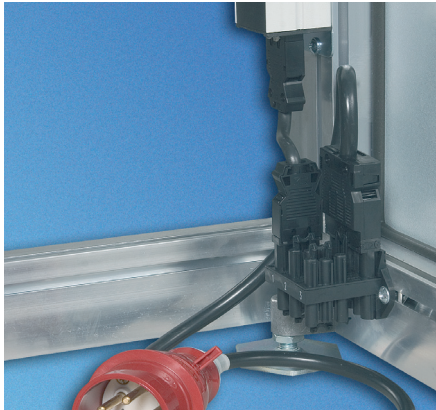
Conversion: 1 mm = 0.03937 inch 1 kg = 2.2046 pound

Replace *x* with the number of your color combination:
.1 = RAL 7035, .6 = RAL 7035/RAL 2003



1 DOS20147

3-phase in rack with GST18 Strong points



2 DOS20132

1 Requirement

Constantly increasing energy requirements in the rack caused by high packing densities (e.g. 1 U Pizza Servers, Blade Servers, etc.)

2 Solution

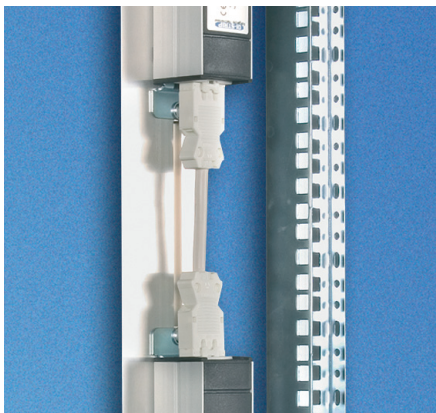
3-phase distributor with GST18 plug system, e.g. 96 A and more with redundant feed

3 Benefits

- Modularity
- Plug-in (no wiring required)
- Expandability
- Cascadability
- Easy provision of redundancies/UPS secured circuits
- Combination of DIN Schuko and IEC320, for example
- Installation position freely selectable
- Good alternative for 3-phase DI-STRIP Triple Power (see page 156)



3 DOS20142



3 DOS20135



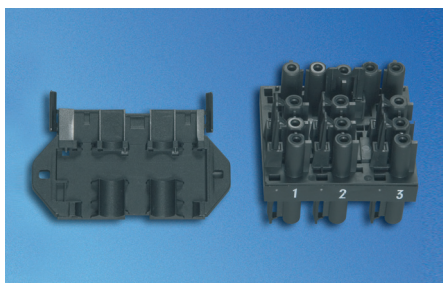
DOS20104

Power Supply Cable, 3-Phase Accessories for GST 18 plug system

- GST 18 socket for connecting GST18i5 distributor block with 3 phases
- 5-pole (L1, L2, L3, N, PE) 250/400 V ~
- Cable: HO5VV-F 5G 2.5 mm²

Color
Black

L	S	n	F1	F2	19"	Safe	Model	Order no.	UP
2000								04.000.048.0	1 unit



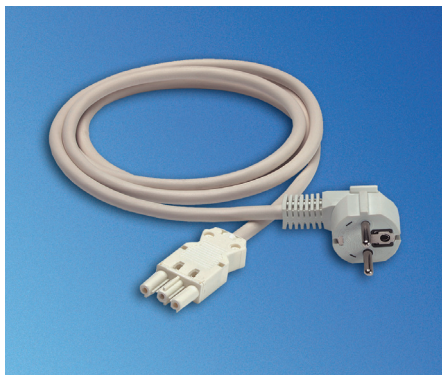
DOS20103

GST18i5 Distributor Block, 3-phase

- For individual connection at the customer
- Modular plug-in connection
- 3 phase distribution on various socket strips
- Including mounting panel

Color
Black

L	S	n	F1	F2	19"	Safe	Model	Order no.	UP
								04.000.038.9	1 unit



DOS00467

Power Supply Cable, 1-Phase Accessories for GST 18 plug system

- Mains plug CEE/VII - GST18 socket (Wieland)
- Cable - H05VV-F3G 1.5 mm²

Color
White

L	S	n	F1	F2	19"	Safe	Model	Order no.	UP
2000								04.000.040.0	1 unit
5000								04.000.041.0	1 unit



DOS00469

Connection Cable Accessories for GST 18 plug system

- GST 18 plug
- GST 18 socket
- Cable - H05VV-F3G 1.5 mm²

Color
For color coding circuits (e.g. UPS)

L	S	n	F1	F2	19"	Safe	Model	Order no.	UP
200							White	04.000.042.0	1 unit
200							Black	04.000.042.9	1 unit
500							White	04.000.037.0	1 unit
500							Black	04.000.037.9	1 unit
1000							White	04.000.044.0	1 unit
1000							Black	04.000.044.9	1 unit
5000							White	04.000.045.0	1 unit



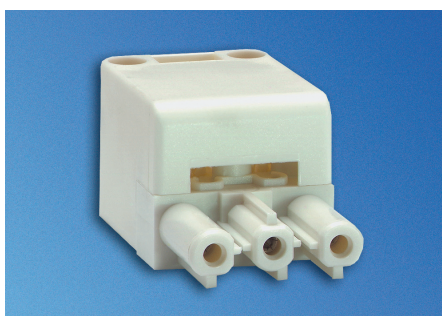
DOS20105

GST18 Socket Part

- With screw terminal for cross-section 1.5-2.5 mm² with cable strain relief
- For individual connection at the customer

Color
White

L	S	n	F1	F2	19"	Safe	Model	Order no.	UP
								04.000.046.0	1 unit



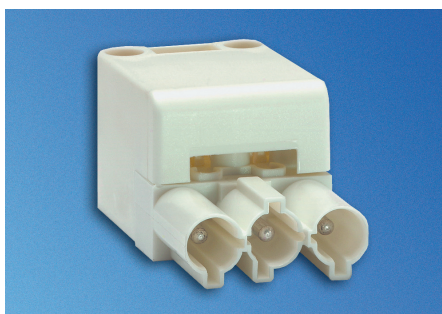
DOS00471

GST18 Plug Part

- With screw terminal for cross-section 1.5-2.5 mm² with cable strain relief
- For individual, further cabling at the customer

Color
White

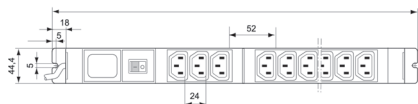
L	S	n	F1	F2	19"	Safe	Model	Order no.	UP
								04.000.047.0	1 unit



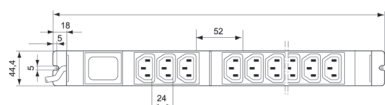
DOS00470



DOS20062



DOS00498



DOS20042

Knürr DI-STRIP® Euro Plug System, IEC 320 mit Winkelstecker

- Optionally with lit switch, 2-pole switching
- 19" installation option
- With Euro combinations of IEC 320 sockets C 13 and C 19
- Cable: H05VV-F 3G 1.5 mm²
- Cable: 2.5 m
- Without fusing

Material/finish

Housing: closed sheet steel extrusion, zinc-passivated, powder-coated texture
Plastic parts: Vampamid 6 0024 VO (UL94), recyclable

Dimensions

Height: 45.5 mm
Housing width: 44.4 mm (= 1 U)

Approvals/certificates

- CE label in accordance with Low Voltage Directive 2006/95/EC
- EMC Directive 2004/108/EC
- GS
- CB-scheme

Color

Housing: RAL 7035 light gray
Plastic parts: RAL 7021 dark gray

Load rating

250 Vac/10 A, C 13
250 Vac/16 A, C 19

Approval symbols for IEC 320 3-way Euro combinations

VDE, UR, CSA

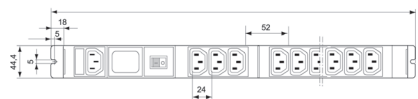
Supply schedule

- 1 socket strip
- 2 mounting bracket

L	S	n	F1	19"	Input values	Input plug	Outputs C 13 C 19	Order no.	UP
333		6	●		230Vac, 16A	Schuko CEE7	6	03.600.006.1	1 unit
483	●	9	●	●	230Vac, 16A	Schuko CEE7	9	03.602.009.1	1 unit
483		12	●	●	230Vac, 10A	IEC60320 Sheet E	12	03.600.312.1	1 unit
783		18	●		230Vac, 16A	IEC60320 Sheet I	15 3	03.600.418.1	1 unit
783		18	●		230Vac, 16A	IEC60309 1ph/N/PE 6h	15 3	03.600.518.1	1 unit



DOS00458



DOS20041

With switch



DOS20040

Without switch

Knürr DI-STRIP® Euro Plug System, IEC 320 Euro input in plug panel

- With fine-wire fuse 10A
- Optionally with lit switch, 2-pole switching
- 19" installation option
- With 3-way Euro combinations of IEC 320sockets

Material/finish

Housing: closed sheet steel extrusion, zinc-passivated, powder-coated texture
Plastic parts: Vampamid 6 0024 VO (UL94), recyclable

Dimensions

Socket spacing: 24 mm
Height: 45.5 mm
Housing width: 44.4 mm (= 1 U)

Approvals/certificates

- CE Symbol in accordance with Low Voltage Directive 2006/95/EC
- EMC Directive 2004/108/EC

- GS
- CSA NRTL/C
- CB-scheme

Color

Housing: RAL 7035 light gray
Plastic parts: RAL 7021 dark gray

Load rating

100-240 Vac
Input: (DC max. 10 A)
Output: (DC max. 10 A)

Approval symbols for IEC 320 3-way Euro combinations

VDE, UR, CSA

Supply schedule

- 1 socket strip
- 2 mounting bracket

L	S	n	F1	F2	19"	Safe	Model	Order no.	UP
383		6	●					03.622.006.1	1 unit
483		9	●		●			03.622.009.1	1 unit
433	●	6	●				With switch	03.624.006.1	1 unit

Dimensions in mm: L = Length, S = Switch, n = Number of sockets, F1 = Standard side, F2 = Design side, 19" = Suitable for 19" installation, Safe = Child-safe, U = Standard height unit, UP = Unit of packaging,

= Express item

Conversion: 1 mm = 0.03937 inch 1 kg = 2.2046 pound

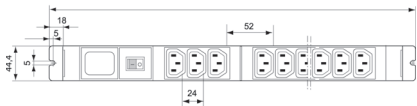
Replace **x** with the number of your color combination:
.1 = RAL 7035, .6 = RAL 7035/RAL 2003



DOS00460

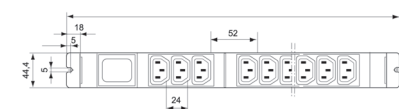


DOS00461



DOS20043

With switch



DOS20044

Without switch



DOS20102

Knürr DI-STRIP® Euro Plug System, IEC 320 Euro input on side panel

- With fine-wire fuse 10A
- Optionally with lit switch, 2-pole switching
- 19" installation option
- With 3-way Euro combinations of IEC 320 sockets

Material/finish

Housing: closed sheet steel extrusion, zinc-passivated, powder-coated texture
Plastic parts: Vampamid 6 0024 VO (UL94), recyclable

Dimensions

Socket spacing: 24 mm
Height: 45.5 mm
Housing width: 44.4 mm (= 1 U)

Approvals/certificates

- CE Symbol in accordance with Low Voltage Directive 2006/95/EC
- EMC Directive 2004/108/EC
- GS
- CSA NRTL/C
- CB-scheme

Color

Housing: RAL 7035 light gray
Plastic parts: RAL 7021 dark gray

Load rating

100-240 Vac
Input: (DC max. 10 A)
Output: (DC max. 10 A)

Approval symbols for IEC 320 3-way Euro combinations

VDE, UR, CSA

Supply schedule

1 socket strip
2 mounting bracket

L	S	n	F1	F2	19"	Safe	Model	Order no.	UP
333		6	•					03.622.706.1	1 unit
433		9	•					03.622.709.1	1 unit
383	•	6	•				With switch	03.624.706.1	1 unit
483	•	9	•				With switch	03.624.709.1	1 unit

Knürr DI-STRIP® Euro Plug System, IEC 320 with cable and right angle plug

- With thermal overload protection, 10 A (can be reset)
- With lit switch, 1-pole switching
- 19" installation option
- With 2 5-way Euro combinations of IEC 320 sockets
- Cable: H05VV-F 3G 2.5 mm²
- Cable: approx. 5 m
- Molded right angle plug, CEE7/VII, optional blue 16 A-6h (2P+PE) CEE17 plug

Material/finish

Housing: closed sheet steel extrusion, zinc-passivated, powder-coated texture
Plastic parts: Vampamid 6 0024 VO (UL94), recyclable

Dimensions

Socket spacing: 24 mm Height: 45.5 mm
Housing width: 44.4 mm (= 1 U)

Approvals/certificates

- CE Symbol in accordance with Low Voltage Directive 2006/95/EC
- EMC Directive 2004/108/EC
- GS
- CB-scheme

Color

Housing: RAL 7035 light gray
Plastic parts: RAL 7021 dark gray

Load rating

250 Vac/10 A

Approval symbols for IEC 320 5-way Euro combinations

UR, CSA, VDE

Supply schedule

1 socket strip
2 mounting bracket

L	S	n	F1	F2	19"	Safe	Model	Order no.	UP
483	•	10	•		•		With switch	03.632.010.1	1 unit

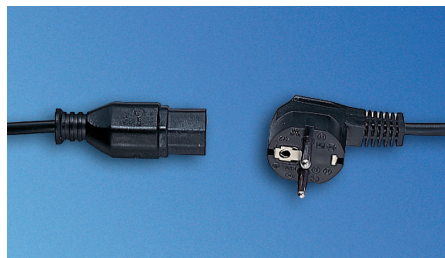
Dimensions in mm: L = Length, S = Switch, n = Number of sockets,
F1 = Standard side, F2 = Design side, 19" = Suitable for 19" installation,
Safe = Child-safe, U = Standard height unit, UP = Unit of packaging,

= Express item

Conversion: 1 mm = 0.03937 inch 1 kg = 2.2046 pound

Replace x with the number of your color combination:
.1 = RAL 7035, .6 = RAL 7035/RAL 2003

Emerson Network Power Rack PDUs



DOS00076

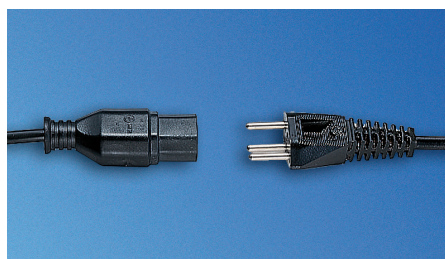
Mains cable for Euro socket strip For DIN 49 440 and French/Belgian standard

- Mains plug CEE/VII - Euro socket IEC 320
- Cable - H05VV-F 3G 1 mm²

Mains voltage
250 VAC

Nominal current
10 A

L	S	n	F1	F2	19"	Safe	Model	Order no.	UP
2000								04.000.054.9	1 unit
6000								04.000.053.9	1 unit



DOS00077

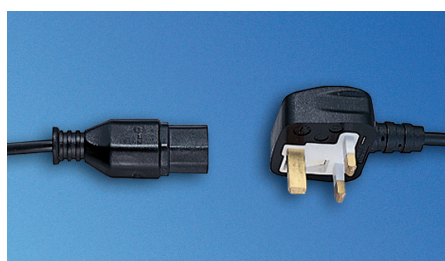
Netzkaabel für Kaltgeräte-Steckdosenleiste für Schweizer Standard

- Mains plug: Type 12 - Euro socket IEC320
- Cable - H05VV-F 3G 1 mm²

Mains voltage
250 VAC

Nominal current
10 A

L	S	n	F1	F2	19"	Safe	Model	Order no.	UP
2000								04.000.055.9	1 unit



DOS00078

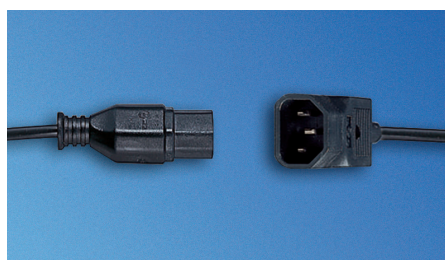
Mains cable for Euro socket strip For British standard

- Mains plug: Type BS 1363 - Euro socket IEC 320
- Cable - H05VV-F 3G 1 mm²

Mains voltage
250 VAC

Nominal current
10 A

L	S	n	F1	F2	19"	Safe	Model	Order no.	UP
2000								04.000.056.9	1 unit



DOS00519

Euro Connection Cable

- Mains plug: IEC 320 - Euro socket IEC320
- Cable - H05VV-F 3G 1 mm²
- USA: SJT AWG18 with USA approval

Mains voltage
250 VAC

Nominal current
10 A

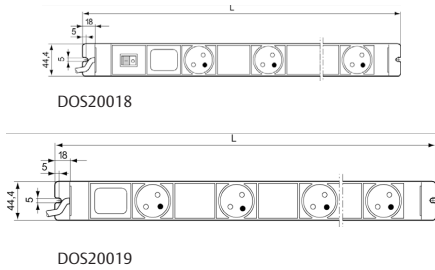
L	S	n	F1	F2	19"	Safe	Model	Order no.	UP
900							EU	04.000.051.9	1 unit
900							USA	04.000.052.9	1 unit

Dimensions in mm: L = Length, S = Switch, n = Number of sockets,
F1 = Standard side, F2 = Design side, 19" = Suitable for 19" installation,
Safe = Child-safe, U = Standard height unit, UP = Unit of packaging,

 = Express item

Conversion: 1 mm = 0.03937 inch 1 kg = 2.2046 pound

Replace **x** with the number of your color combination:
.1 = RAL 7035, .6 = RAL 7035/RAL 2003



Knürr DI-STRIP® Classic Standard CEE 7-V (UTE) / France

- Optionally with lit switch, 2-pole switching
- Socket rotation: 45°
- Cable: H05VV-F 3G 1.5 mm²
- Molded right angle plug

Material/finish

Housing: Closed sheet steel extrusion, zinc-passivated, powder-coated texture
Plastic parts: Vampamid 6 0024 VO (UL94), recyclable
Internal conductor: full-length busbar, brass

Dimensions

Socket spacing: 100 mm
Height: 45.5 mm
Housing width: 44.4 mm (= 1 U)
Cable 2.5 m

Approvals/certificates

- CE label in accordance with Low Voltage Directive 2006/95/EC
- EMC Directive 2004/108/EC
- GS
- CB-scheme

Color combination

Final digit of order number .1:
RAL 7035 light gray
Final digit of order number .6:
Housing: RAL 2003 pastel orange
Plastic parts: RAL 7035 light gray

Load rating


100-240 Vac/16 A

Supply schedule

1 socket strip
2 mounting brackets

L	S	n	F1	F2	19"	Safe	Model	Order no.	UP
1783		17	•			•		03.400.067.x	1 unit
1383		13	•			•		03.400.063.x	1 unit
983		9	•			•		03.400.059.x	1 unit
583		5	•			•		03.400.055.x	1 unit
1733	•	16	•			•	With switch	03.402.066.x	1 unit
1333	•	12	•			•	With switch	03.402.062.x	1 unit
933	•	8	•			•	With switch	03.402.058.x	1 unit
533	•	4	•			•	With switch	03.402.054.x	1 unit

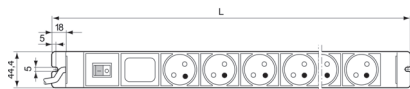
Dimensions in mm: L = Length, S = Switch, n = Number of sockets,
F1 = Standard side, F2 = Design side, 19" = Suitable for 19" installation,
Safe = Child-safe, U = Standard height unit, UP = Unit of packaging,

 = Express item

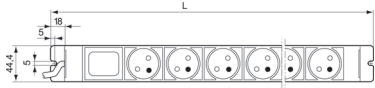
Conversion: 1 mm = 0.03937 inch 1 kg = 2.2046 pound

Replace **x** with the number of your color combination:
.1 = RAL 7035, .6 = RAL 7035/RAL 2003

Emerson Network Power Rack PDUs



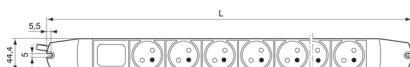
DOS20023 With switch



DOS20022 Without switch



DOS20025 With switch



DOS20024 Without switch

Knürr DI-STRIP® Compact Standard CEE 7-V (UTE) / France

- Optionally with lit switch, 2-pole switching
- 19" installation option (with length 483 mm)
- 2 versions: Standard side panel or Design side panel
- Socket rotation: 45°
- Cable: H05VV-F 3G 1.5 mm²
- Molded right angle plug

Material/finish

Housing: closed sheet steel extrusion, zinc-passivated, powder-coated texture
Plastic parts: Vampamid 6 0024 VO (UL94), recyclable
Internal conductor: full-length busbar, brass

Dimensions

Socket spacing: 50 mm
Height: 45.5 mm
Housing width: 44.4 mm (= 1 U)
Cable 2.5 m

Approvals/certificates

- CE Symbol in accordance with Low Voltage Directive 2006/95/EC
- EMC Directive 2004/108/EC
- GS
- CB-scheme

Color combination

Final digit of order number .1:
RAL 7035 light gray
Final digit of order number .6:
Housing: RAL 2003 pastel orange
Plastic parts: RAL 7035 light gray

Load rating

100-240 Vac/16 A

Supply schedule

1 socket strip
2 mounting brackets

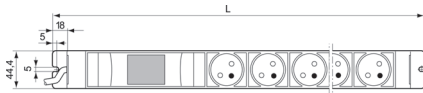
L	S	n	F1	F2	19"	Safe	Model	Order no.	UP
883		15	•			•		03.400.015.x	1 unit
732		11		•		•		03.400.111.x	1 unit
683		11	•			•		03.400.011.x	1 unit
532		7		•		•		03.400.107.x	1 unit
483		7	•		•	•		03.400.007.x	1 unit
382		4		•		•		03.400.104.x	1 unit
333		4	•			•		03.400.004.x	1 unit
883	•	14	•			•	With switch	03.402.014.x	1 unit
732	•	10		•		•	With switch	03.402.110.x	1 unit
683	•	10	•			•	With switch	03.402.010.x	1 unit
532	•	6		•		•	With switch	03.402.106.x	1 unit
483	•	6	•		•	•	With switch	03.402.006.x	1 unit
382	•	3		•		•	With switch	03.402.103.x	1 unit
333	•	3	•			•	With switch	03.402.003.x	1 unit

Dimensions in mm: L = Length, S = Switch, n = Number of sockets,
F1 = Standard side, F2 = Design side, 19" = Suitable for 19" installation,
Safe = Child-safe, U = Standard height unit, UP = Unit of packaging,

= Express item

Conversion: 1 mm = 0.03937 inch 1 kg = 2.2046 pound

Replace .x with the number of your color combination:
.1 = RAL 7035, .6 = RAL 7035/RAL 2003



DOS20026

Knürr DI-STRIP® Protector FI Standard CEE 7-V (UTE) / France

Protector FI

- RCCB for user protection
- Protection with indirect contact as error protection by switching off with inadmissible high contact voltage through contact with electrical equipment
- Protection with direct contact as back-up protection
- Residual operating current $I_g = 10$ mA for alternating and pulsating direct fault current
- 19" installation option (with length 483 mm)
- Socket rotation: 45°
- Cable: H05VV-F 3G 1.5 mm²
- Molded right angle plug

Material/finish

Housing: closed sheet steel extrusion, zinc-passivated, powder-coated texture
Plastic parts: Vampamid 6 0024 VO (UL94), recyclable
Internal conductor: full-length busbar, brass

Dimensions

Socket spacing: 50 mm
Height: 78 mm
Housing width: 44.4 mm (= 1 U)
Cable 2.5 m

Approvals/certificates

- CE Symbol in accordance with Low Voltage Directive 2006/95/EC
- EMC Directive 2004/108/EC
- GS
- CB-scheme

Color combination

Final digit of order number .1:
RAL 7035 light gray
Plastic parts: RAL 7035 light gray

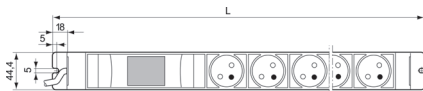
Load rating

100-240 Vac/16 A

Supply schedule

1 socket strip
2 mounting brackets

L	S	n	F1	F2	19"	Safe	Model	Order no.	UP
883		13	•			•		03.404.013.1	1 unit
683		9	•			•		03.404.009.1	1 unit
483		5	•		•	•		03.404.005.1	1 unit



DOS20026

Knürr DI-STRIP® Protector LS Standard CEE 7-V (UTE) / France

Protector LS

- Circuit breaker for overload and short circuit
- Protects cables and feeds with rapid switching off with short circuit and defined delayed cutoff with overload
- Circuit breaker: 16 A
- Tripping characteristic, type B, 2-pole
- 19" installation option (with length 483 mm)
- Socket rotation: 45°
- Cable: H05VV-F 3G 1.5 mm²
- Molded right angle plug

Material/finish

Housing: closed sheet steel extrusion, zinc-passivated, powder-coated texture
Plastic parts: Vampamid 6 0024 VO (UL94), recyclable
Internal conductor: full-length busbar, brass

Dimensions

Socket spacing: 50 mm
Height: 78 mm
Housing width: 44.4 mm (= 1 U)
Cable 2.5 m

Approvals/certificates

- CE Symbol in accordance with Low Voltage Directive 2006/95/EC
- EMC Directive 2004/108/EC
- GS
- CB-scheme

Color combination

Final digit of order number .1:
RAL 7035 light gray
Plastic parts: RAL 7035 light gray

Load rating

100-240 Vac/16 A

Supply schedule

1 socket strip
2 mounting brackets

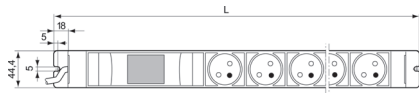
L	S	n	F1	F2	19"	Safe	Model	Order no.	UP
883		13	•			•		03.408.013.1	1 unit
683		9	•			•		03.408.009.1	1 unit
483		5	•		•	•		03.408.005.1	1 unit

Dimensions in mm: L = Length, S = Switch, n = Number of sockets,
F1 = Standard side, F2 = Design side, 19" = Suitable for 19" installation,
Safe = Child-safe, U = Standard height unit, UP = Unit of packaging,

= Express item

Conversion: 1 mm = 0.03937 inch 1 kg = 2.2046 pound

Replace *x* with the number of your color combination:
.1 = RAL 7035, .6 = RAL 7035/RAL 2003



DOS 20026

Knürr DI-STRIP® Protector FI / LS Standard CEE 7-V (UTE) / France

Protector FI / LS

- RCCB and circuit breaker
- Provides a combination of user, overload and short circuit protection
- Residual operating current $I_g = 30$ mA for alternating and pulsating direct fault current
- Circuit breaker: 16 A
- Tripping characteristic, type B, 2-pole
- 19" installation option (with length 483 mm)
- Socket rotation: 45°
- Cable: H05VV-F 3G 1.5 mm²
- Molded right angle plug

Material/finish

Housing: Closed sheet steel extrusion, zinc-passivated, powder-coated texture
Plastic parts: Vampamid 6 0024 VO (UL94), recyclable
Internal conductor: full-length busbar, brass

Dimensions

Socket spacing: 50 mm
Height: 78 mm
Housing width: 44.4 mm (= 1 U)
Cable 2.5 m

Approvals/certificates

- CE Symbol in accordance with Low Voltage Directive 2006/95/EC
- EMC Directive 2004/108/EC
- GS
- CB-scheme

Color combination

Final digit of order number .1:
RAL 7035 light gray
Plastic parts: RAL 7035 light gray

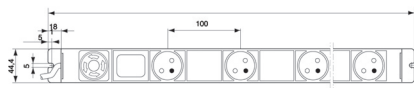
Load rating

100-240 Vac/16 A

Supply schedule

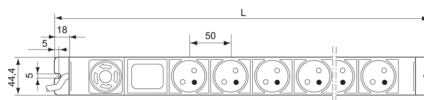
1 socket strip
2 mounting brackets

L	S	n	F1	F2	19"	Safe	Model	Order no.	UP
883		13	•			•		03.410.013.1	1 unit
683		9	•			•		03.410.009.1	1 unit
483		5	•		•	•		03.410.005.1	1 unit



DOS20027

Classic with emergency stop switch



DOS20028

Compact with emergency stop switch

Knürr DI-STRIP® Protector Emergency STOP Standard CEE 7-V (UTE) / France

- With 2-pole emergency stop switch for user protection
- For protecting operating personnel
- For manual emergency switching off of the connected consumers
- Phase and neutral conductors are safely separated
- Switch must be specifically unlocked to restart
- 19" installation option (with length 483 mm)
- Socket rotation: 45°
- Cable: H05VV-F 3G 1.5 mm²
- Molded right angle plug

Material/finish

Housing: closed sheet steel extrusion, zinc-passivated, powder-coated texture
Plastic parts: Vampamid 6 0024 VO (UL94), recyclable
Internal conductor: full-length busbar, brass

Dimensions

Socket spacing: Classic: 100 mm,
Compact: 50 mm

Height: 101 mm
Housing width: 44.4 mm (= 1 U)
Cable 2.5 m

Approvals/certificates

- CE Symbol in accordance with Low Voltage Directive 2006/95/EC
- EMC Directive 2004/108/EC
- GS
- CB-scheme

Color combinations

Final digit of order number .1:
RAL 7035 light gray
Plastic parts: RAL 7035 light gray

Load rating

100-240 Vac/16 A

Supply schedule

1 socket strip
2 mounting brackets
2 19" mounting bracket (additional with 19" installation option)

L	S	n	F1	F2	19"	Safe	Model	Order no.	UP
683		10	•			•	Compact	03.426.010.1	1 unit
483		6	•		•	•	Compact	03.426.006.1	1 unit
1333		12	•			•	Classic	03.426.062.1	1 unit
933		8	•			•	Classic	03.426.058.1	1 unit

Dimensions in mm: L = Length, S = Switch, n = Number of sockets,
F1 = Standard side, F2 = Design side, 19" = Suitable for 19" installation,
Safe = Child-safe, U = Standard height unit, UP = Unit of packaging,



Conversion: 1 mm = 0.03937 inch 1 kg = 2.2046 pound

Replace x with the number of your color combination:
.1 = RAL 7035, .6 = RAL 7035/RAL 2003



DOS20029 With emergency Off switch and FI-/LS circuit breaker

Knürr DI-STRIP® Protector Emergency Stop FI/LS Standard CEE 7-V (UTE) / France

- With 2-pole emergency stop switch for user protection
- For protecting operating personnel
- For manual emergency switching off of the connected consumers
- Phase and neutral conductors are safely separated
- Switch must be specifically unlocked to restart
- Socket rotation: 45°
- Cable: H05VV-F 3G 1.5 mm²
- Molded right angle plug

Material/finish
Housing: closed sheet steel extrusion, zinc-passivated, powder-coated texture
Plastic parts: Vampamid 6 0024 VO (UL94), recyclable
Internal conductor: full-length busbar, brass

Dimensions
Socket spacing:
Compact: 50 mm
Height: 101 mm
Housing width: 44.4 mm (= 1 U)
Cable 2.5 m

Approvals/certificates
- CE label in accordance with Low Voltage Directive 2006/95/EC
- EMC Directive 2004/108/EC
- GS
- CB-scheme

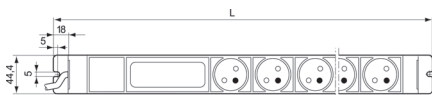
Color combinations
Final digit of order number .1:
RAL 7035 light gray
Plastic parts: RAL 7035 light gray

Additionally:
With 2-pole fault current switch and circuit breaker
Provides a combination of user, overload and short circuit protection

Load rating
100-240Vac/16 A

Supply schedule
1 socket strip
2 mounting brackets

L	S	n	F1	F2	19"	Safe	Model	Order no.	UP
683		8	•			•		03.428.008.1	1 unit



DOS20030 With mains filter

Knürr DI-STRIP® Power Cleaner Standard CEE 7-V (UTE) / France

- High-frequency glitches are generally caused by switching processes in an operation from 100 kHz to 5 MHz. This high-frequency rate overloads the mains frequency and affects adjacent electronic equipment. The mains filter attenuates this high-frequency rate.
- The attenuation behavior is harmonized with the typical interference spectrum.
- The mains filter works in both directions. This means that glitches from the equipment to the socket strip are also filtered from the mains.
- 19" installation option (with length 483 mm)
- Socket rotation: 45°
- Cable: H05VV-F 3G 1.5 mm²
- Molded right angle plug

Material/finish
Housing: closed sheet steel extrusion, zinc-passivated, powder-coated texture
Plastic parts: Vampamid 6 0024 VO (UL94), recyclable
Internal conductor: full-length busbar, brass

Dimensions
Socket spacing: 50 mm
Height: 45.5 mm
Housing width: 44.4 mm (= 1 U)

Approvals/certificates
- CE Symbol in accordance with Low Voltage Directive 2006/95/EC
- EMC Directive 2004/108/EC
- GS
- CB-scheme

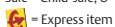
Color combination
Final digit of order number .1:
RAL 7035 light gray
Final digit of order number .6:
Housing: RAL 2003 pastel orange
Plastic parts: RAL 7035 light gray

Load rating
Nominal voltage: max. 250 Vac, 50 Hz
Nominal current: max. 16 A

Supply schedule
1 socket strip
2 mounting brackets

L	S	n	F1	F2	19"	Safe	Model	Order no.	UP
883		13	•			•		03.412.013.x	1 unit
683		9	•			•		03.412.009.x	1 unit
483		5	•		•	•		03.412.005.x	1 unit

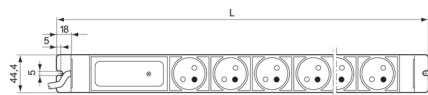
Dimensions in mm: L = Length, S = Switch, n = Number of sockets,
F1 = Standard side, F2 = Design side, 19" = Suitable for 19" installation,
Safe = Child-safe, U = Standard height unit, UP = Unit of packaging,



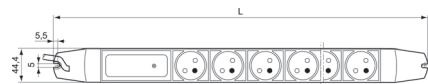
Conversion: 1 mm = 0.03937 inch 1 kg = 2.2046 pound

Replace x with the number of your color combination:
.1 = RAL 7035, .6 = RAL 7035/RAL 2003

Emerson Network Power Rack PDUs



DOS20031



DOS20032

Knürr DI-STRIP® Safety Basic Standard CEE 7-V (UTE) / France

- For protecting against transient overvoltages from the mains, which, for example, are caused by switching machines on and off.
- With critical overvoltages the mains is separated.
- Once the safety arrester has been triggered the green function display goes out. The socket strip can then no longer be used. Send the socket strip to the manufacturer for the safety arrester to be replaced!

The safety effect of the type 3 test category and requirements category "D" is to protect the equipment, i.e. precision protection. The protection devices of the test and requirements categories 1 and 2 and B and C must be pre-connected in the building installation to ensure optimum protection.

- 19" installation option (with length 483 mm)
- Socket rotation: 45°
- Cable: H05VV-F 3G 1.5 mm²
- Molded right angle plug

Material/finish
Housing: closed sheet steel extrusion, zinc-passivated, powder-coated texture
Plastic parts: Vampamid 6 0024 VO (UL94), recyclable
Internal conductor: full-length busbar, brass

Dimensions
Socket spacing: 50 mm
Height: 45.5 mm
Housing width: 44.4 mm (= 1 U)

Approvals/certificates
- CE Symbol in accordance with Low Voltage Directive 2006/95/EC
- EMC Directive 2004/108/EC
- GS
- CB-scheme

Color
Final digit of order number .1:
RAL 7035 light gray

Technical data
Test category: Type 3
- In acc. with DIN EN 61643-11
Requirements class: D
- In acc. with VDE 0675-6
Mains voltage: 230 VAC
Nominal current: max. 16 A
Cut-off discharge current (8/20 μs): 10 kA
Response time: < 25 ns
Protection level
(with 100 A varistor peak current):
- L with respect to N: < 800 V
- L/N with respect to PE: < 1500 V

Supply schedule
1 socket strip
2 mounting brackets

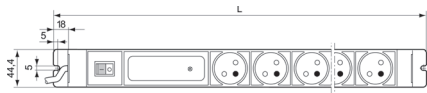
L	S	n	F1	F2	19"	Safe	Model	Order no.	UP
732		10		•		•		03.416.110.1	1 unit
683		10	•			•		03.416.010.1	1 unit
532		6		•		•		03.416.106.1	1 unit
483		6	•		•	•		03.416.006.1	1 unit
432		4		•		•		03.416.104.1	1 unit
383		4	•			•		03.416.004.1	1 unit

Dimensions in mm: L = Length, S = Switch, n = Number of sockets,
F1 = Standard side, F2 = Design side, 19" = Suitable for 19" installation,
Safe = Child-safe, U = Standard height unit, UP = Unit of packaging,

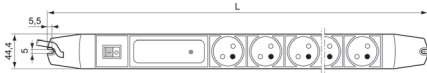


Conversion: 1 mm = 0.03937 inch 1 kg = 2.2046 pound

Replace .x with the number of your color combination:
.1 = RAL 7035, .6 = RAL 7035/RAL 2003



DOS20033 With overvoltage protection and mains filter



DOS20034 With overvoltage protection and mains filter

Knürr DI-STRIP® Safety Standard Standard CEE 7-V (UTE) / France

- The "Safety Standard" models consist of a combined overvoltage protection/mains filter element.
- For protecting against transient overvoltages from the mains, which, for example, are caused by switching machines on and off.
- With critical overvoltages the mains is separated.
- Once the safety arrester has been triggered the green function display goes out. The socket strip can then no longer be used. Send the socket strip to the manufacturer for the safety arrester to be replaced!
- The safety effect of the type 3 test category and requirements category "D" is to protect the equipment, i.e. precision protection. The protection devices of the test and requirements categories 1 and 2 and B and C must be preconnected in the building installation to ensure optimum protection.
- High-frequency glitches are generally caused by switching processes in an operation from 100 kHz to 5 MHz.
- This high-frequency rate overloads the mains frequency and affects adjacent electronic equipment. The mains filter attenuates this high-frequency rate.
- The attenuation behavior is harmonized with the typical interference spectrum.
 - 19" installation option (with length 483 mm)
 - Socket rotation: 45°
 - Cable: HO5VV-F 3G 1.5 mm²
 - Molded right angle plug

Material/finish

Housing: closed sheet steel extrusion, zinc-passivated, powder-coated texture
 Plastic parts: Vampamid 6 0024 VO (UL94), recyclable
 Internal conductor: full-length busbar, brass

Dimensions

Socket spacing: 50 mm
 Height: 45.5 mm
 Housing width: 44.4 mm (= 1 U)
 Cable 2.5 m

Approvals/certificates

- CE Symbol in accordance with Low Voltage Directive 2006/95/EC
- EMC Directive 2004/108/EC
- GS
- CB-scheme

Color combination


Final digit of order number .1:
 RAL 7035 light gray
 Final digit of order number .6:
 Housing: RAL 2003 pastel orange
 Plastic parts: RAL 7035 light gray

Technical data


Mains voltage: 230 VAC
 Nominal current: max. 16 A
 Cut-off discharge current (8/20 µs): 10 kA
 Response time: < 25 ns
 Protection level
 (with 100 A varistor peak current):
 - L with respect to N: < 800 V
 - L/N with respect to PE: < 1500 V
 Overvoltage protection
 Requirements class: D
 - In acc. with VDE 0675-6
 Mains filter
 - In acc. with VDE 0565 (EN 60939)

Supply schedule

1 socket strip
 2 mounting brackets

L	S	n	F1	F2	19"	Safe	Model	Order no.	UP
883	●	13	●			●	With switch	03.418.013.x	1 unit
732	●	9		●		●	With switch	03.418.109.x	1 unit
683	●	9	●			●	With switch	03.418.009.x	1 unit
532	●	5		●		●	With switch	03.418.105.x	1 unit
483	●	5	●		●	●	With switch	03.418.005.x	1 unit 

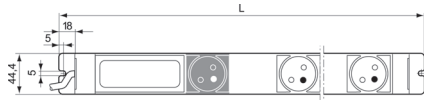
Dimensions in mm: L = Length, S = Switch, n = Number of sockets,
 F1 = Standard side, F2 = Design side, 19" = Suitable for 19" installation,
 Safe = Child-safe, U = Standard height unit, UP = Unit of packaging,

 = Express item

Conversion: 1 mm = 0.03937 inch 1 kg = 2.2046 pound

Replace **x** with the number of your color combination:
 .1 = RAL 7035, .6 = RAL 7035/RAL 2003

Emerson Network Power Rack PDUs



DOS20035 With master-slave module

Knürr DI-STRIP® Master-Slave Standard CEE 7-V (UTE) / France

- If the master equipment is switched, the slave sockets are also switched (together, with a short delay to the master). This means convenient switching on and off of several hard to access devices. Switching thresholds can be set from outside via potentiometer.

- Note:

- The master equipment power consumption must be continuously above the switching-on threshold. When switching off the master consumer, the power consumption must fall below the switch-off threshold.
- 19" installation option (with length 483 mm)
- Socket rotation: 45°
- Cable: H05VV-F 3G 1.5 mm²
- Molded right angle plug

Material/finish

Housing: closed sheet steel extrusion, zinc-passivated, powder-coated texture
Plastic parts: Vampamid 6 0024 VO (UL94), recyclable
Internal conductor: full-length busbar, brass

Dimensions

Socket spacing: 50 mm
Height: 45.5 mm
Housing width: 44.4 mm (= 1 U)
Cable 2.5 m

Approvals/certificates

- CE Symbol in accordance with Low Voltage Directive 2006/95/EC
- EMC Directive 2004/108/EC
- GS
- CB-scheme

Color combination

Final digit of order number .1:
RAL 7035 light gray
Plastic parts: RAL 7035 light gray

Load rating

Max. 250 Vac/16 A

Technical data

Switching threshold setting range
On: 20 mA - 200 mA (approx. 55 mA delivery status)
Off: 16 mA - 160 mA (approx. 44 mA delivery status)
Switching delay: 550 ms +/- 20 %
Electronic module: 2-pole switching

Supply schedule

1 socket strip
2 mounting brackets

L	S	n	F1	F2	19"	Safe	Model	Order no.	UP
683		9	•			•		03.414.009.1	1 unit
483		5	•		•	•		03.414.005.1	1 unit

Dimensions in mm: L = Length, S = Switch, n = Number of sockets,
F1 = Standard side, F2 = Design side, 19" = Suitable for 19" installation,
Safe = Child-safe, U = Standard height unit, UP = Unit of packaging,

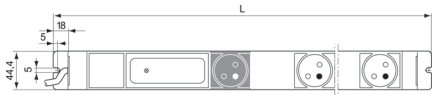
= Express item

Conversion: 1 mm = 0.03937 inch 1 kg = 2.2046 pound

Replace .x with the number of your color combination:
.1 = RAL 7035, .6 = RAL 7035/RAL 2003



DOS20037 Master-slave, overvoltage protection and mains filter



DOS20036 Master-slave, overvoltage protection and mains filter

Knürr DI-STRIP® Combi Standard CEE 7-V (UTE) / France

- Master-slave with overvoltage protection and mains filter
- Automatic consumer switching
- Combines Master-Slave (page 7.32) and Safety Standard (page 7.31) functions
- Socket rotation: 45°
- Cable: H05VV-F 3G 1.5 mm²
- Molded right angle plug

Material/finish

Housing: closed sheet steel extrusion, zinc-passivated, powder-coated texture
Plastic parts: Vampamid 6 0024 VO (UL94), recyclable
Internal conductor: full-length busbar, brass

Dimensions

Socket spacing: 50 mm
Height: 45.5 mm
Housing width: 44.4 mm (= 1 U)
Cable 2.5 m

Approvals/certificates

- CE label in accordance with Low Voltage Directive 2006/95/EC
- EMC Directive 2004/108/EC
- GS
- CB-scheme

Color combination

Final digit of order number . 1:
RAL 7035 light gray
Plastic parts: RAL 7035 light gray

Technical data

Overvoltage protection and mains filter:
Mains voltage: max. 250 Vac
Nominal current: 16 A
Requirements class: D (precision protection in acc. with VDE 0675)
Protection level (8/20 µs wave):
Max. 10 kA
Protection level (1.5/50 µs wave): < 1500 V (L + N against PE)
Master-slave function:
Switching threshold setting range
On: 20 mA - 200 mA (approx. 55 mA delivery status)
Off: 16 mA - 160 mA (approx. 44 mA delivery status)
Switching delay: 550 ms +/- 20 %
Electronic module: 2-pole switching

Supply schedule

1 socket strip
2 mounting brackets

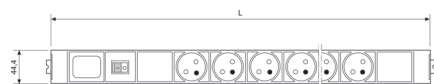
L	S	n	F1	F2	19"	Safe	Model	Order no.	UP
782		9		●		●		03.420.109.1	1 unit
733		9	●			●		03.420.009.1	1 unit
582		5		●		●		03.420.105.1	1 unit
533		5	●			●		03.420.005.1	1 unit

Dimensions in mm: L = Length, S = Switch, n = Number of sockets,
F1 = Standard side, F2 = Design side, 19" = Suitable for 19" installation,
Safe = Child-safe, U = Standard height unit, UP = Unit of packaging,

= Express item

Conversion: 1 mm = 0.03937 inch 1 kg = 2.2046 pound

Replace x with the number of your color combination:
.1 = RAL 7035, .6 = RAL 7035/RAL 2003



DOS20048 GST 18 with switch



DOS20047 GST 18 without switch

Knürr DI-STRIP® Compact GST 18 Plug System (Wieland) Standard CEE 7-V (UTE) / France

- Quick and efficient plug connection system
 - Plug-in electro-installation in place of conventional wiring
 - Speed:
 - With easy pre-configured element plugging together
 - Flexibility:
 - With cable (cable length)
 - Rational:
 - Easy exchange of socket strips, without extensive cabling
 - Safety:
 - Faulty installations are ruled out with plug system
 - Space-saving:
 - Use of protection and switching functions can be extended with further cabling without and plug space loss (max. load rating 16 A)
- Material/finish**
 Housing: closed sheet steel extrusion, zinc-passivated, powder-coated texture
 Plastic parts: Vampamid 6 0024 VO (UL94), recyclable
 Internal conductor: full-length busbar, brass

- Dimensions**
 Socket spacing: 50 mm
 Height: 45.5 mm
 Housing width: 44.4 mm (= 1 U)
- Approvals/certificates**
 - CE Symbol in accordance with Low Voltage Directive 2006/95/EC
 - EMC Directive 2004/108/EC
 - GS
 - CB-scheme
- Color combination**
 Final digit of order number .1:
 RAL 7035 light gray
 Plastic parts: RAL 7035 light gray
- Load rating**
 100-240 Vac/16 A
- Supply schedule**
 1 socket strip
 2 mounting brackets

L	S	n	F1	F2	19"	Safe	Model	Order no.	UP
583	●	6	●			●	With switch	03.402.206.1	1 unit
433	●	3	●			●	With switch	03.402.203.1	1 unit
533		7	●			●		03.400.207.1	1 unit
383		4	●			●		03.400.204.1	1 unit



DOS20051

Knürr DI-STRIP® Safety Basic with GST18 plug system / France

- With overvoltage (surge) protection
- Technical description, see page 2.50

L	S	n	F1	F2	19"	Safe	Model	Order no.	UP
433		4				●		03.416.204.1	1 unit



DOS20052

Knürr DI-STRIP® Safety Standard with GST18 plug system

- With overvoltage protection, with integrated mains filter and lit switch
- Technical description, see page 2.51

L	S	n	F1	F2	19"	Safe	Model	Order no.	UP
583		5				●		03.418.205.1	1 unit



DOS20054

Knürr DI-STRIP® Master Slave with GST18 plug system

- Technical description, see page 2.52

L	S	n	F1	F2	19"	Safe	Model	Order no.	UP
533		5				●		03.414.205.1	1 unit



DOS00717



DOS00664 Classic with switch



DOS00665 Classic without switch

Knürr DI-STRIP® Classic Standard CH SEV 1011

- With/without switch, socket spacing, 100 mm
- Optionally with lit switch, 2-pole switching
- Socket rotation: 45°
- Cable: H05VV-F 3G 1.5 mm²
- Molded plug

Material/finish

Housing: closed sheet steel extrusion, zinc-passivated, powder-coated texture
Plastic parts: Vampamid 6 0024 VO (UL94), recyclable
Internal conductor: full-length busbar, brass

Dimensions

Socket spacing: 100 mm
Height: 45.5 mm
Housing width: 44.4 mm (= 1 U)
Cable 2.5 m

Approvals/certificates

- CE Symbol in accordance with Low Voltage Directive 2006/95/EC
- EMC Directive 2004/108/EC
- GS
- CB-scheme

Color combination

Final digit of order number .1:
RAL 7035 light gray
Final digit of order number .6:
Housing: RAL 2003 pastel orange
Plastic parts: RAL 7035 light gray

Load rating

100-240 Vac/10 A

Supply schedule

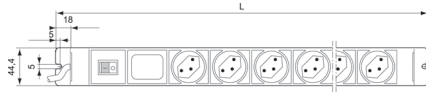
1 socket strip
2 mounting brackets

L	S	n	F1	F2	19"	Safe	Model	Order no.	UP
1783		17	•					03.700.067.x	1 unit
1383		13	•					03.700.063.x	1 unit
983		9	•					03.700.059.x	1 unit
583		5	•					03.700.055.x	1 unit
1733	•	16	•				With switch	03.702.066.x	1 unit
1333	•	12	•				With switch	03.702.062.x	1 unit
933	•	8	•				With switch	03.702.058.x	1 unit
533	•	4	•				With switch	03.702.054.x	1 unit

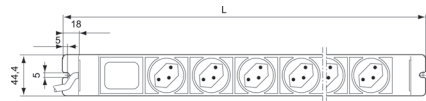
Emerson Network Power Rack PDUs



DOS20074



DOS00666



DOS20038



DOS20039



DOS00667

Knürr DI-STRIP® Compact Standard CH SEV 1011

- Optionally with lit switch, 2-pole switching
- 19" installation option (with length 483 mm)
- 2 models, standard side or design side
- Socket rotation: 45°
- Cable: H05VV-F 3G 1.5 mm²
- Molded plug

Material/finish

Housing: closed sheet steel extrusion, zinc-passivated, powder-coated texture
Plastic parts: Vampamid 6 0024 VO (UL94), recyclable
Internal conductor: full-length busbar, brass

Dimensions

Socket spacing: 50 mm
Height: 45.5 mm
Housing width: 44.4 mm (= 1 U)
Cable 2.5 m

Approvals/certificates

- CE Symbol in accordance with Low Voltage Directive 2006/95/EC
- EMC Directive 2004/108/EC
- GS
- CB-scheme

Color combination


Final digit of order number .1:
RAL 7035 light gray
Plastic parts: RAL 7035 light gray

Load rating


100-240 Vac/10 A

Supply schedule

- 1 socket strip
- 2 mounting brackets

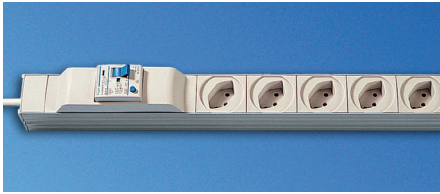
L	S	n	F1	F2	19"	Safe	Model	Order no.	UP
883		15	•					03.700.015.1	1 unit
732		11		•				03.700.111.1	1 unit
683		11	•					03.700.011.1	1 unit
532		7		•				03.700.107.1	1 unit
483		7	•		•			03.700.007.1	1 unit 
382		4		•				03.700.104.1	1 unit
333		4	•					03.700.004.1	1 unit
732	•	10		•			With switch	03.702.110.1	1 unit
683	•	10	•				With switch	03.702.010.1	1 unit
532	•	6		•			With switch	03.702.106.1	1 unit
483	•	6	•		•		With switch	03.702.006.1	1 unit
382	•	3		•			With switch	03.702.103.1	1 unit
333	•	3	•				With switch	03.702.003.1	1 unit

Dimensions in mm: L = Length, S = Switch, n = Number of sockets,
F1 = Standard side, F2 = Design side, 19" = Suitable for 19" installation,
Safe = Child-safe, U = Standard height unit, UP = Unit of packaging,

 = Express item

Conversion: 1 mm = 0.03937 inch 1 kg = 2.2046 pound

Replace .x with the number of your color combination:
.1 = RAL 7035, .6 = RAL 7035/RAL 2003



DOS00719



DOS00668

Knürr DI-STRIP® Protector FI/LS Standard CH SEV 1011

Protector FI / LS

- RCCB and circuit breaker
- Provides a combination of user, overload and short circuit protection
- Residual operating current $I_g = 30$ mA for alternating and pulsating direct fault current
- Circuit breaker: 10 A
- Tripping characteristic, type B, 2-pole
- 19" installation option (with length 483 mm)
- Socket rotation: 45°
- Cable: H05VV-F 3G 1.5 mm²
- Molded right angle plug

Material/finish

Housing: closed sheet steel extrusion, zinc-passivated, powder-coated texture
Plastic parts: Vampamid 6 0024 VO (UL94), recyclable
Internal conductor: full-length busbar, brass

Dimensions

Socket spacing: 50 mm
Height: 78 mm
Housing width: 44.4 mm (= 1 U)
Cable 2.5 m

Approvals/certificates

- CE Symbol in accordance with Low Voltage Directive 2006/95/EC
- EMC Directive 2004/108/EC
- GS
- CB-scheme

Color combination

Final digit of order number .1:
RAL 7035 light gray
Plastic parts: RAL 7035 light gray

Load rating

100-240 Vac/10 A

Supply schedule

1 socket strip
2 mounting brackets

L	S	n	F1	F2	19"	Safe	Model	Order no.	UP
683		9	•					03.710.009.1	1 unit
483		5	•		•			03.710.005.1	1 unit



DOS00720



DOS00669

With overvoltage protection and mains filter

Knürr DI-STRIP® Safety Standard Standard CH SEV 1011

- With overvoltage protection and integrated mains filter
- With lit switch, 2-pole switching
- 19" installation option (with length 483 mm)
- Socket rotation: 45°
- Cable: H05VV-F 3G 1.5 mm²
- Molded plug

Material/finish

Housing: closed sheet steel extrusion, zinc-passivated, powder-coated texture
Plastic parts: Vampamid 6 0024 VO (UL94), recyclable
Internal conductor: full-length busbar, brass

Dimensions

Socket spacing: 50 mm
Height: 45.5 mm
Housing width: 44.4 mm (= 1 U)
Cable 2.5 m

Approvals/certificates

- CE Symbol in accordance with Low Voltage Directive 2006/95/EC
- EMC Directive 2004/108/EC
- GS
- CB-scheme

Color combination

Final digit of order number .1:
RAL 7035 light gray
Plastic parts: RAL 7035 light gray

Description and technical data

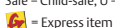
(See page 165)
Nominal current: 10 A

Supply schedule

1 socket strip
2 mounting brackets
2 19" mounting brackets (additional with 19" installation option)

L	S	n	F1	F2	19"	Safe	Model	Order no.	UP
683	•	9	•				With switch	03.718.009.1	1 unit
483	•	5	•		•		With switch	03.718.005.1	1 unit

Dimensions in mm: L = Length, S = Switch, n = Number of sockets,
F1 = Standard side, F2 = Design side, 19" = Suitable for 19" installation,
Safe = Child-safe, U = Standard height unit, UP = Unit of packaging,



Conversion: 1 mm = 0.03937 inch 1 kg = 2.2046 pound

Replace *x* with the number of your color combination:
.1 = RAL 7035, .6 = RAL 7035/RAL 2003

Inline Metering System (IMS) – Optimum upgrade solution for existing installations

Monitoring is already part of the everyday routine in most data centers when it comes to system availability. For this reason you decide with new systems for socket strips/PDUs with integrated monitoring (Managed PDUs or Adaptive PDUs). But what do you do with existing systems in which socket strips/PDUs are usually installed without measuring functions?

Emerson Network Power's solution for this is called IMS (Inline Metering System). These modules allow existing racks with installed basic power distributors to be upgraded accordingly. As almost all server racks are supplied with an A and a B-feed, **later installation is possible without interruption**. The IMS modules can also be installed space-savily inside or outside the rack, e.g. in the shelf. The Inline Metering Systems (IMS) are divided into **three different product groups, with different features**.

Emerson Network Power Inline Metering Systems (IMS) benefits:

- Existing rack PDUs do not have to be swapped out, as the modules
- All consumers (where possible) can be integrated into the monitoring system, as numerous plug systems are provided (1ph – 3ph, max. 63A per phase).
- Flexible installation inside or outside the rack (e.g. in raised floor).

Inline Metering System (IMS)

IMS model series overview:



Knürr DI-STRIP IMS

Features:

- Fast installation and easy data recording with graphic and numerical power consumption overview; can be retrieved via web interface.
- The power value can be read directly on the rack, as a local display is installed in every module.
- An N-conductor overload with 3-phase systems can be prevented, as the phase symmetry is monitored.
- Alarm signal when incidents occur, as the threshold values (phase symmetry, bottom limit, pre-warning and alarm) can be set flexibly.



Liebert MPX IMS

Features:

- Liebert Rack PDUs familiar software interface, as the same communication card as with Liebert MPX/MPH is used.
- Highest possible safety, security and availability with an operating temperature of max. 55°C.
- Extensive measurement functions (power, current, voltage and energy), with higher measurement accuracy of up to +-1%.
- An N-conductor overload with 3-phase systems can be prevented, as the N-conductor current is monitored.
- Easy connection to the network with only 1 IP address of up to 4 Liebert MPX IMS / MPH / MPX .
- External sensors and a display can also be connected.



Knürr MODULAR IMS

Features:

- Extensive measurement functions (power, current, voltage, energy and power factor), with higher measurement accuracy of up to 0.17% referring to the end value.
- Very high input currents can be measured (up to 850A per phase via external transducer).
- The modular setup means the solution can be adjusted customer-specific (e.g. up to 4 in-feeds per module with different input plugs or even fixed).
- Up to 75 modules can be controlled via one IP address.
- Saving in external databases possible without additional software.

Emerson Network Power Rack PDUs



INPUT POWER

- Single-phase or three-phase
- 16A up to max. 63A



OUTPUT DISTRIBUTOR

- Single-phase or three-phase
- 16A up to max. 63A



MODULARITY

- Depending on the type of communication card, external displays or external sensors



MONITORING

- Input level



LOCAL MONITORING

- Display for user (MPX IMS and DI-STRIP IMS)



REMOTE MONITORING

- Secure web and SNMP interface



RACK PDU ARRAY™

- One IP address, up to 4 rack PDUs (MPX IMS)
- Liebert MPX, Liebert MPH and Liebert IMS in the same private network



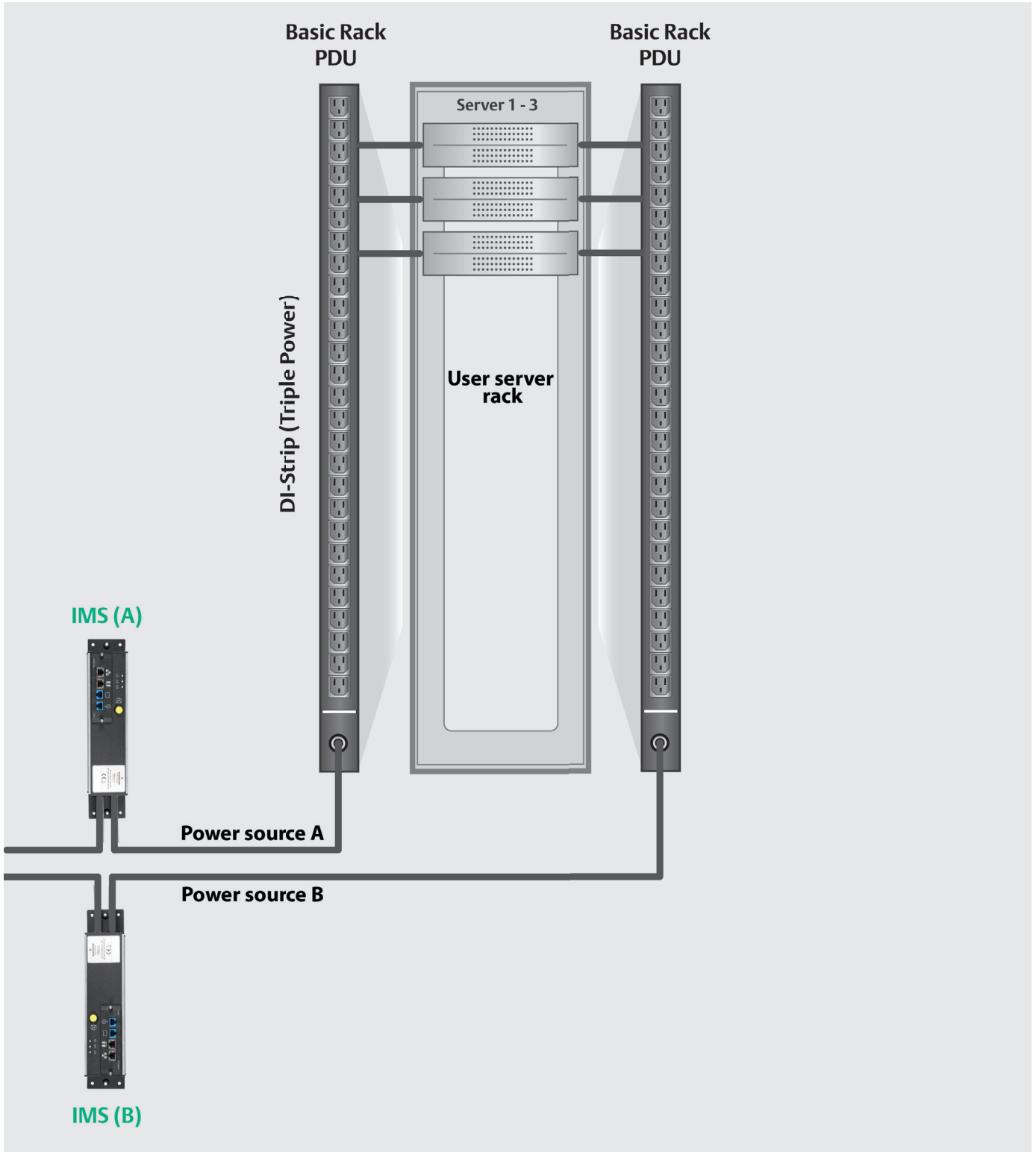
Emerson Network Power IMS – product series

Features	Knürr DI-STRIP® IMS	Liebert MPX™ IMS	Knürr Modular IMS
Measurement module	x	x	x
Modular			x
Display	Fixed	External	
Remote interface	x	x	x
Measuring at input level	x	x	x
Measurement modules per IP address	1	4	75
Max. measurement points per IP address	1	4	300
Visualization at PDU level	x	x	x
Visualization at rack level		x	x
Visualization at room level	Only with additional software Liebert Nform	Only with additional Liebert Nform or Avocent DSView	x
Measurement parameters	A	A,V,W,kWh	A,V,W,VA, Var, kWh, cosphi.
Phase asymmetry analysis	x	x	x
Connection option for external sensors		x	x
Input power	1ph + 3ph, max 32A	1ph + 3ph, max 32A	1ph + 3ph, max 63A (max 4 feeds), max. 3ph 999A (via external transducer)
Connection option	IEC 60309, IEC60320, Schuko	IEC 60309	IEC 60309, GST18, fixed connection
Protocols	HTTP, SNMP, Syslog	HTTP, HTTPS, SNMP, Telnet	HTTP, HTTPS, SNMP v3,
Storage in external database	with additional software Liebert Nform	with additional software Liebert Nform or Avocent DSView	Oracle, MySQL, MSSQL

Order numbers:

Order number 1 ph. 16 A	036072001	MPXIMS-EHBAXS30	030145118
Order number 1 ph. 32 A	036072011	MPXIMS-EHBAXQ30	030145128
Order number 3 ph. 16 A	036072021	MPXIMS-EHBAXT30	030145138
Order number 3 ph. 32 A	036072031	MPXIMS-EHBAXR30	030145148
Control unit	not required	not required	030145108

Easy upgrade from basic power distributor to measurement-enabled power distributor





Knürr DI-STRIP® IMS 16 A, single phase

- Quick and efficient plug connection system
- Plug-in electro-installation in place of conventional wiring
- Speed with easy preconfigured elements plugging together
- Cable flexibility (cable length)
Easy socket strip swap-out, without costly cabling
- Faulty installations are ruled out with plug system
- Space-saving use of protection and switching functions can be extended with further cabling without any plug space loss on additional socket strips (max. load rating 16 A)
- With big transparent LCD display
- Effective value display of alternating current
- LCD display rotation in 90° steps
- Display can be switched bright or dark
- Load changes signaling
- Automatic background light reduction
- Meets the highest EMC requirements (interference Criterion A; radiated emission: Class B)

Data interface

- The plug strip can be integrated into the network via an RJ45 plug.
- The sockets can be accessed directly and remotely with a web browser; extra software is not required.
- The power values are shown graphically and numerically in the software. Three threshold values and an unbalanced load warning can be variably set.
- Up to 5 users or administrators can access the module password-protected.
- The software displays the name and place of the PDU; this information can be entered by an administrator.

- The user can specify a static IP address or access via DHCP. Firmware updates can be made via a web browser.
- Supported protocols: HTTP, SNMP (Traps, SET, GET), Syslog

Material/finish

- Housing: Closed sheet steel extrusion, zinc-passivated, powder-coated fine texture
- Plastic parts: Vampamid 6 0024 V0 (UL94), recyclable, colored, fine textured

Dimensions

- Height: 45.5 mm
- Housing width: 44.4 mm (1 U)
- Length: 333 mm

Approvals/certificates

- CE Symbol in accordance with Low Voltage Directive 2006/95/EC
- EMC Directive 2004/108/EC
- FFC
- GS Certificate
- CB-scheme

Color

- Housing: RAL 7035 light gray
- Plastic parts: RAL 7021 dark gray

Load rating

- Nominal voltage: 230 VAC ± 10%
- Nominal current: 16 A

Supply schedule

- 1 plug adaptor module with ampere meter
- 2 mounting brackets
- Operating instructions

How supplied

- Flat-packed kit

L	Input	Output	Order no.	UP
333	GST18 inst. plug	GST18 inst. socket	03.607.200.1	1 unit

Knürr DI-STRIP® GST plug system Cable set for Knürr DI-STRIP® IMS, single phase

- Set consisting of one input and one output cable
- Cable - H05VV-F3G 1.5 mm²

Dimensions

- Input cable: Length, 2.5 m
- Output cable: Length, 0.5 m

Approvals/certificates

- CE Symbol in accordance with Low Voltage Directive 2006/95/EC
- EMC Directive 2004/108/EC

Supply schedule

- 1 cable set

How supplied

- Flat-packed kit

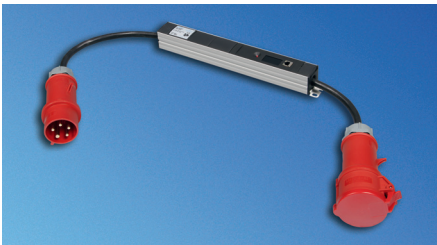
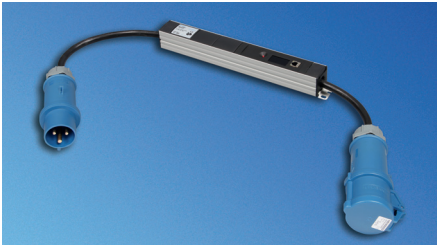
Model	Input	Output	Order no.	UP
I/O Set GST18i / Schuko	Schuko CEE7/4 - GST18i	GST18i - Schuko CEE7/4	03.607.200.2	1 unit
I/O Set GST18i / IEC320 16 A	IEC60320 Sheet I - GST18i	GST18i - IEC60320 C 19	03.607.200.3	1 unit
I/O Set GST18i / IEC320 10 A	IEC60320 Sheet E - GST18i	GST18i - IEC60320 C 13	03.607.200.4	1 unit
I/O Set GST18i / IEC320 16 A	IEC60309 1ph/N/PE 6h - GST18i	GST18i - IEC60309 1ph/N/PE 6h	03.607.200.5	1 unit

Dimensions in mm: L = Length, S = Switch, n = Number of sockets, F1 = Standard side, F2 = Design side, 19" = Suitable for 19" installation, Safe = Child-safe, U = Standard height unit, UP = Unit of packaging,



Conversion: 1 mm = 0.03937 inch 1 kg = 2.2046 pound

Replace **x** with the number of your color combination:
.1 = RAL 7035, .6 = RAL 7035/RAL 2003



Knürr DI-STRIP® IMS 32 A single phase; 16 A and 32 A three phase

- Modules each have an IEC60309 input and IEC60309 output
- With big transparent LCD display
- Effective value display of alternating current
- LCD display rotation in 90° steps
- Display can be switched bright or dark
- Load changes signaling
- Automatic background light reduction
- Meets the highest EMC requirements (interference: Criterion A; radiated emission: Class B)

Data interface

- The plug strip can be integrated into the network via an RJ45 plug.
- The sockets can be accessed directly and remotely with a web browser; extra software is not required.
- The power values are shown graphically and numerically in the software. Three threshold values and an unbalanced load warning can be variably set.
- Up to 5 users or administrators can access the module password-protected.
- The software displays the name and place of the PDU; this information can be entered by an administrator.
- The user can set a static IP address or access via DHCP. Firmware updates can be made via a web browser.
- Supported protocols: HTTP, SNMP (Traps, SET, GET), Syslog

Material/finish

- Housing: closed sheet steel extrusion, zinc-passivated, powder-coated texture
- Plastic parts: Vampamid 6 0024 V0 (UL94), recyclable, colored, fine textured

Dimensions

- Height: 45.5 mm
- Housing width: 44.4 mm (1 U)
- Length: 389 mm
- Input cable length, 2.5 m
- Output cable length, 0.5 m

Approvals/certificates

- CE label in accordance with Low Voltage Directive 2006/95/EC
- EMC Directive 2004/108/EC
- FFC
- GS Certificate
- CB-scheme

Color

- Housing: RAL 7035 light gray
- Plastic parts: RAL 7021 dark gray

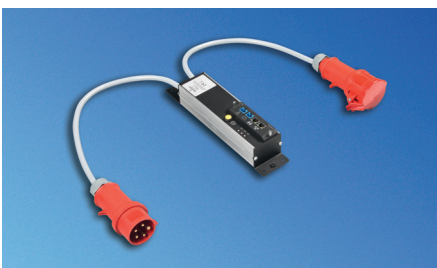
Supply schedule

- 1 plug adaptor module with ampere meter
- 2 mounting brackets
- Operating instructions

How supplied

- Flat-packed kit

Model	L	Input values	Input plug	Output socket	Order no.	UP
DI-STRIP RM Inline 1x32A	389	230Vac; 32A	IEC60309 1ph/N/PE 6h	IEC60309 1ph/N/PE 6h	03.607.201.1	1 unit
DI-STRIP RM Inline 3x16A	389	230/400Vac; 16A	IEC60309 3ph/N/PE 6h	IEC60309 3ph/N/PE 6h	03.607.202.1	1 unit
DI-STRIP RM Inline 3x32A	389	230/400Vac; 32A	IEC60309 3ph/N/PE 6h	IEC60309 3ph/N/PE 6h	03.607.203.1	1 unit



Liebert MPX™ IMS

- Existing rack PDUs do not have to be swapped out, as the modules can be upgraded
- All consumers (where possible) can be integrated into the monitoring system, as numerous plug systems are provided (1ph - 3ph, max. 32 A per phase)
- Flexible installation inside or outside the rack (e.g. in raised floor)
- Liebert Rack PDUs familiar software interface, as the same communication card as with Liebert MPX/MPH is used
- Highest possible safety, security and availability with an operating temperature of max. 55 °C
- Extensive measurement functions (power, current, voltage and energy), with higher measurement accuracy of up to ± 1%
- An N-conductor overload with 3-phase systems can be prevented, as the N-conductor current is monitored
- Easy connection to the network with only 1 IP address of up to 4 Liebert MPX IMS / MPH / MPX
- External sensors and a display can also be connected.

Technical data

Interfaces:

- RJ-45 LAN port (10/100 MBit) – for connecting to the local network (LAN) via an Ethernet cable (not included).
- Expansion/administration port for: - local configuration using a computer/laptop, for setting up a link-up of several PDUs
- Display port for connecting the RPC BDM (display module)
- External sensor port for connecting optional sensors

Supported technologies:

- Web support, provides Liebert MPX network management and control. Authorized users can view status information via their network.
- SNMP support, provides Liebert MPX SNMP management.
- Easy integration into Liebert Nform, Avocent DSView3 and Nagios

Material/finish

- Housing: Aluminum
- Cover: Sheet steel

■ Dimensions

- Height: 81 mm
- Width: 75 mm
- Length: 266 mm
- Input cable length, 3 m
- Output cable length, 0.5 m

■ Approvals

- CE label in accordance with Low Voltage Directive 2006/95/EC
- EMC Directive 2004/108/EC
- BV GS

■ Color

- Housing: Aluminum/RAL 7021 dark gray

■ Supply schedule

- 1 MPXIMS Module / power supply

■ How supplied

- Flat-packed kit

Model	L	Input values	Input plug	Output socket	Order no.	UP
Liebert MPX™ IMS 1x16A	266	230Vac; 16A	IEC60309 1ph/N/PE 6h	IEC60309 1ph/N/PE 6h	MPXIMS-EHBAXS30	1 unit
Liebert MPX™ IMS 1x32A	266	230Vac; 32A	IEC60309 1ph/N/PE 6h	IEC60309 1ph/N/PE 6h	MPXIMS-EHBAXQ30	1 unit
Liebert MPX™ IMS 3x16A	266	230/400Vac; 16A	IEC60309 1ph/N/PE 6h	IEC60309 1ph/N/PE 6h	MPXIMS-EHBAXT30	1 unit
Liebert MPX™ IMS 3x32A	266	230/400Vac; 32A	IEC60309 1ph/N/PE 6h	IEC60309 1ph/N/PE 6h	MPXIMS-EHBAXR30	1 unit



Knürr Modular IMS

- Existing rack PDUs do not have to be swapped out, as the modules can be upgraded
- All consumers (where possible) can be integrated into the monitoring system, as numerous plug systems are provided (1 ph - 3ph, max. 63 A per phase)
- Flexible installation inside or outside the rack (e.g. in raised floor)
- Extensive measurement functions (power, current, voltage, energy and power factor), with higher measurement accuracy of up to 0.17% referring to the end value.
- Very high input currents can be measured (up to 999A per phase via external transducer)
- The modular setup means the solution can be adjusted customer-specific (e.g. up to 4 in-feeds per module with different input plugs or even fixed feed are possible)
- Up to 75 modules can be controlled via one IP address
- Saving in external databases possible without additional software

■ Technical data

- The measurement modules can only be operated with a control unit
- Max. 75 measurement modules can be connected to a control unit
- 2 RJ 45 LAN ports 10/100MBit for connecting to local network (on the control unit)
- Visualization of all connected measurement modules via WEB
- Status information can be viewed via WEB
- Protocols: HTTP, HTTPS, SNMPv3
- Storage in external database possible (Oracle, MySQL, MSSQL)

- Integration into building systems also possible via potential-free contacts
- Temperature sensors can be connected

■ Dimensions

- Length/depth (control unit): 600 mm
- Length/depth (modules): 400 mm
- Width: 483 mm (19")
- Height: 88.8 mm (2 U)
- Power supply cable: Length, 2 m
- Output: Input socket fixed on device

■ Approvals/certificates

- CE Symbol in accordance with Low Voltage Directive 2006/95/EC
- EMC Directive 2004/108/EC
- FFC
- GS Certificate
- CB-scheme

■ Color

- RAL 7021 dark gray

■ Supply schedule

- Measurement modules, control unit

■ How supplied

- Flat-packed kit

Model	L	Input values	Input plug	Output socket	Order no.	UP
Knürr Modular IMS 1x16A		2x 230Vac; 16A	2x IEC60309 1ph/N/PE 6h	2x IEC60309 1ph/N/PE 6h	03.014.511.8	1 unit
Knürr Modular IMS 1x32A		2x 230Vac; 32A	2x IEC60309 1ph/N/PE 6h	2x IEC60309 1ph/N/PE 6h	03.014.512.8	1 unit
Knürr Modular IMS 3x16A		2x 230/400Vac; 16A	2x IEC60309 1ph/N/PE 6h	2x IEC60309 1ph/N/PE 6h	03.014.513.8	1 unit
Knürr Modular IMS 3x32A		2x 230/400Vac; 32A	2x IEC60309 1ph/N/PE 6h	2x IEC60309 1ph/N/PE 6h	03.014.514.8	1 unit
Knürr Modular Control Unit					03.014.510.8	1 unit