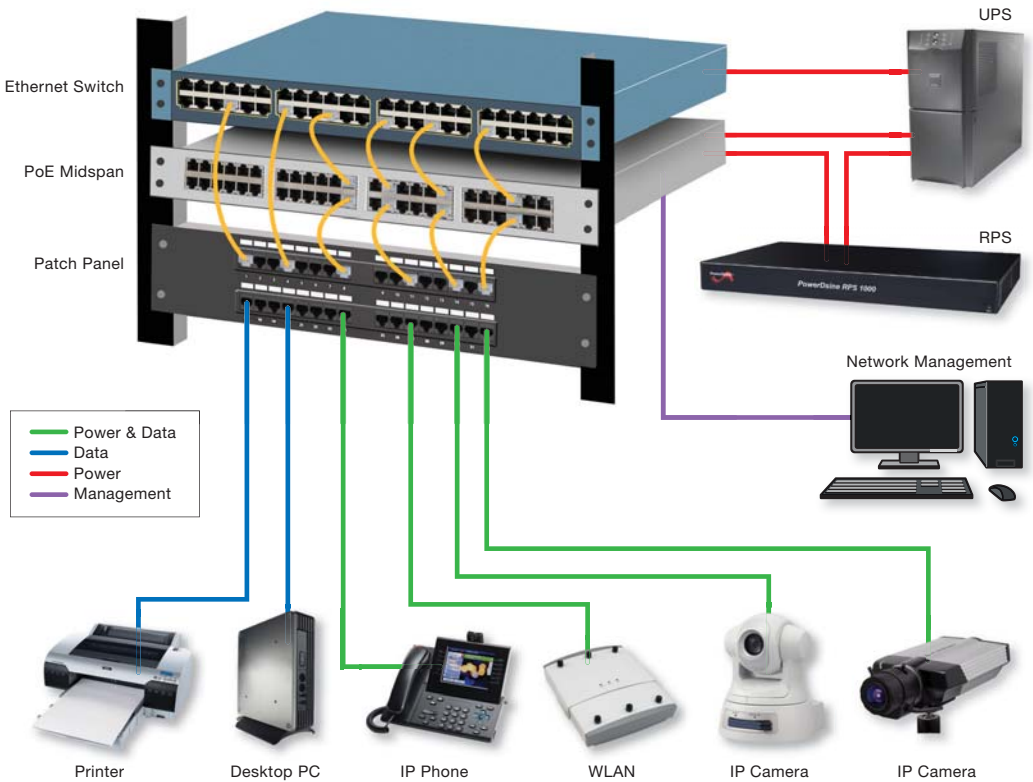


# PowerDsine<sup>®</sup> Product Catalog



# How will you



# power that?

## PowerDsine PoE Midspans

**Providing easy, low-cost power over new and existing Ethernet infrastructure**

PowerDsine® PoE Systems from Microsemi® enable delivery of up to 72 watts of scalable, energy efficient Power over Ethernet (PoE) to IP phones, WLAN access points, IP cameras, thin clients and other Ethernet devices using existing CAT-5 or better cabling. PowerDsine midspans leverage Ethernet infrastructure to deliver PoE technology; eliminating the need to install separate AC power cabling, or replace existing Ethernet switches.

The exclusive PowerView Pro network management system (SNMPv3) allows remote management and reboot of end-terminals. PowerDsine is a major source of the 802.3af and 802.3at and upcoming HDBaseT standards, and the leader in providing high power PoE business communication solutions.

PowerDsine midspans now comply with the Power over HDBaseT (PoH) standard delivering up to 60W per port, while also being backwards compatible with IEEE802.3at type 1 and type 2 compliant products.

The PoH standard includes options to deliver up to 95W per port.

**Power Matters.**

# PowerView Pro Management

Highly secure Web-based/SNMP Remote Network Management System

**Microsemi**

Home View System Configuration Port Configuration

**View - Status**

Midspan Nickname: Room 3 Midspan Number 5 Energy saving: 262.3 kWatt/Year

#	1	2	3	4	5	6	7	8	9	10	11	12	13	14	15	16	17	18	19	20	21	22	23	24
Power (W)	15.04	19.03	15.04	15.04	15.04	15.04	15.04	15.04	15.04	15.04	15.04	15.04	15.04	15.04	15.04	15.04	15.04	15.04	15.04	15.04	15.04	15.04	15.04	15.04
Description																								

Midspan Status	Local	External	Total
Total Power Consumption (Watt)	75	150	225
Maximum available Power (Watt)	200	230	430
System Voltage (Volt)	48.6	-	-
Temperature (F)	53.2	-	-
PD Detection Method	IEEE802.3af IEEE802.3at Legacy	-	-
Midspan Status	Active	-	-

UPS Power Management	
Midspan UPS Powered by	Battery
Midspan UPS Battery Level(%)	68
Midspan UPS Battery Time Left (min)	25

Power Source Status

Internal (950W) Power Source	OK
External (950W) Redundancy Power Source	Fail

- SNMPv3 and web-based management
- Supports both IPv4 and IPv6 addressing
- Comes standard in PD-6500 and PD-9500 families\*
- Optional feature in PD-9000 family\*
- Monitors statistics, usage, and availability
- Monitors battery life in UPS and manages flow to critical and non-critical devices
- Allows devices to be remotely rebooted
- Schedules on/off in periods of non-use as well as reboots to increase network efficiency and uptime

\* Multiport devices only

# Accessories

Family	Product Number	Description
 <p>Redundant Power Supply</p>	PD-RPS-450	450W redundant power supply, 19", 1U, supports the PD-9006G/ACDC/M, PD-9012G/ACDC/M, PD-9024G/ACDC/M, and 9506G/ACDC/M
	PD-RPS-1000	1000W redundant power supply, 19", 1U, supports the PD-9024G/ACDC/M/F, 9512G/ACDC/M and 9524G/ACDC/M
	PD-RPS-Cable	Spare set of cables (DC & communication) for the 9000G and 9500G midspans
 <p>802.3af Active Splitter</p>	PD-AS-601/5	Power conversion from 48V to 5V output, 2 x DC jacks: round 3.4x1.35mm and 5.5x2.5mm
	PD-AS-601/12	Power conversion from 48V to 12V output, 2 x DC jacks: round 3.4x1.35mm and 5.5x2.5mm
 <p>802.3at Active Splitter</p>	PD-AS-701/12	Power conversion from 48V to 12V output, 2 pairs, for use with PD-9000G family
	PD-AS-701/18	Power conversion from 48V to 18V output, 2 pairs, for use with PD-9000G family
	PD-AS-701/24	Power conversion from 48V to 24V output, 2 pairs, for use with PD-9000G family
	PD-AS-951/12-24	Power conversion from 48V to 12V or 24V DC output (user selectable), 4 pairs, for use with PD-9500G family
	PD-AS-951/12-24/C	Power conversion from 48V to 12V or 24V DC output (user selectable), 4 pairs with open DC wires, for use with PD-9500G family
 <p>Passive Splitter/Dongles</p>	PD-PS-401/Cisco	Passive splitter for Cisco low power terminals
	PD-PS-401G	Passive splitter for Cisco 802.1n access point, Gigabit compliant
	PD-DCJ-35135	DC jac adapter for PowerDsine splitters, size 3.5mmx1.35mm
 <p>PoE Extender</p>	PD-PoE Extender	1-port, extends PoE range by additional 100m, 802.af/802.at output power

# Non Rack Mountable Midspan Overview



## PD-3001/3001G Midspan

---

This single port midspan offers a solution for security network and other low port density IP Terminal installations.

- Provides 15.4W
- IEEE802.3af compliant
- 10/100/1000Mbps data transfer rates\*
- PoH type 1



## PD-3504G Midspan

---

This 4 port midspan offers a solution for IP telephones, wireless LAN access points, security network cameras and IP terminals.

- 4 ports
- IEEE802.3af compliant
- Provides 15.4W per port
- 10/100/1000Mbps data transfer rates
- PoH type 1



## PD-9001G Midspan

---

This 30W single port midspan provides a high-power solution for remote powering of current and emerging high power applications including 802.11 access points, pan-tilt-zoom cameras, video-phones and WiMAX access points.

- Provides 30W
- 10/100/1000Mbps data transfer rates
- IEEE802.3at compliant
- PoH type 1, PoE+ including 2-event, PoH type 2



## PD-9501G Midspan

---

This 60W single port, high power midspan enables remote powering of current and emerging high power applications including remote distance wireless IEEE802.11n access points, pan-tilt-zoom cameras, video-phones, access control, thin clients and POS.

- Provides 60W
- 10/100/1000Mbps data transfer rates
- IEEE802.3af compliant
- Energy efficient PoE, dissipates 60% less power when powering 25.5W devices
- PoH type 1, PoE+ including 2-event, PoH type 2

\* Gigabit rates in G models only

# Rack Mountable Midspan Overview



## PD-3500/3500G Midspan

---

This multiport midspan allows IP telephones, wireless LAN access points, security network cameras and IP terminals to receive power over standard Ethernet cables, leaving network infrastructure completely unaltered.

- 6/12/24 ports
- Provides 15.4W per port
- IEEE802.3af compliant
- 10/100/1000Mbps data transfer rates\*
- PoH type 1



## PD-6500/6500G Midspan

---

The remote management enabled 6500 midspans allow IP telephones, wireless LAN access points, IP cameras and many other types of data terminals to receive power, along with data, over standard Ethernet cables, leaving network infrastructure completely unaltered.

- 6/12/24 ports
- Remote power management
- Provides 15.4W per port
- 10/100/1000Mbps data transfer rates\*
- IEEE802.3af compliant
- PoH type 1



## PD-9000G Midspan

---

The high power, remote management enabled 9000G midspans are designed specifically to power IEEE802.11n and 802.3at access points, pan-tilt-zoom and dome network cameras, video-phones, thin clients, POS systems and other end terminals.

- 6/12/24 ports
- Provides 36W per port
- 10/100/1000Mbps data transfer rates
- IEEE802.3at compliant
- Remote power management
- PoH type 1, PoE+ including 2-event, PoH type 2



## PD-9500G Midspan

---

The high power, remote management enabled power IEEE802.11n and 802.3at access points, pan-tilt-zoom and dome network cameras, video-phones, thin clients, POS systems and other end terminals.

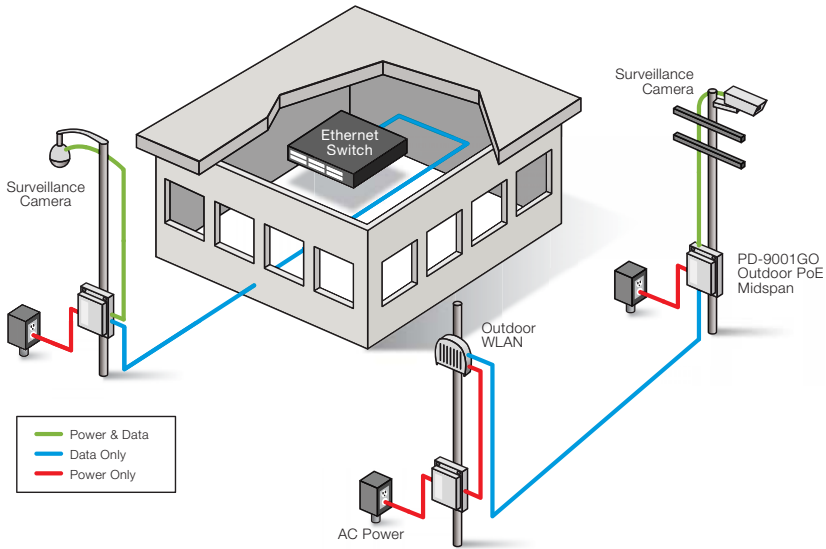
- 6/12 ports
- Provides 60W per port
- 10/100/1000Mbps data transfer rates
- IEEE802.3at compliant
- Remote power management
- High power over 4-pairs
- PoH type 1, PoE+ including 2-event, PoH twin type 2 (4-pairs)

# Typical Power Consumption of Common Applications

Power Consumption	Applications	PowerDsine Solution
3-5W	IP phones	PD-3500 family PD-6500 family
5-12.95W	Wireless access points IP cameras	PD-3001/AC PD-3001G/AC PD-3500 family PD-6500 family
12.95-20W	802.11n Biometric access control Thin clients	PD-9000G family
20-25.5W	RFID readers Video IP phones PTZ IP cameras 802.16 base stations Thin client Industrial sensors	PD-9000G family
25.5-40W	Thin clients Video IP phones Workgroup switches Point of sales Information kiosks	PD-9000G family
40-51W	Ultraportable laptops Thin clients Point of sales Information kiosks	PD-9500G family
51-60W	Notebook laptops Thin clients Point of sales Information kiosks	PD-9500G family



# Midspans for Outdoor Installations



## PD-9001GO

- Outdoor midspan for outdoor devices
- Outdoor rated: IP66
- Extended temperature range -40°C, +65°C
- Fully IEEE802.3at standard compliant
- Supports 10/100/1000Mbps data rate
- Plug 'n Play installation (installer does not have to open unit)
- Supports both 802.3af and 802.3at powered devices
- Includes integral surge protection
- AC power input



## PD-9001G-40/SP

- Indoor midspan for outdoor devices
- Up to 40W of power on 2-pairs
- IEEE 802.3at compliant with 2-event classification
- IEEE 802.3af backward compatible
- Surge protection according to GR 1089
- Safe and reliable power to WLAN access points
- Supports 10/100/1000Base-T applications
- Compact design with 1U height
- Supports 10/100/1000Mbps data rates
- AC power input

**Coming Soon: 60W Outdoor Midspan!**

# How Will You Power That?



## Education

---

An insatiable appetite for reliable communications and data sharing is driving demand for WLAN access points, IP phones and IP cameras. Learn how PowerDsine midspans help increase safety, communication, and data accessibility while keeping costs down by visiting:

[www.microsemi.com/PowerDsine/Solutions/Education/](http://www.microsemi.com/PowerDsine/Solutions/Education/)



## Healthcare

---

Older buildings and a push to move patient records digital has created a challenge for Health Care IT managers. PoE midspans help deliver the highest standard of patient care securely and reliably, while keeping costs down.



## Municipal

---

Municipalities and Transit Authorities look to surveillance devices as well as WLAN access points to improve security and increase revenue. PowerDsine now offers an outdoor midspan to support installation of outdoor municipal surveillance and communications devices.



## Finance

---

Security and accessibility will always be top priorities of any financial institution. PowerDsine's PoE midspans can improve security and access control reliability increasing the effectiveness and efficiency of financial institutions.

# PowerDsine Selection Guide

## Indoor Midspan

Watts per Port	Product Number	Number of Ports	Remotely Managed	Gigabit	Input	Warranty	Other
15.4W	PD-3001/AC	1			AC	1-year	
15.4W	PD-3001G/AC	1		X	AC	1-year	
15.4W	PD-3504G/AC	4		X	AC	1-year	
15.4W	PD-3506/AC	6			AC	1-year	
15.4W	PD-3506G/AC	6		X	AC	1-year	
15.4W	PD-3512AC	12			AC	1-year	
15.4W	PD-3512G/AC	12		X	AC	1-year	
15.4W	PD-3524/AC	24			AC	1-year	200W total power
15.4W	PD-3524G/AC	24		X	AC	1-year	200W total power
15.4W	PD-3524G/AC/F	24		X	AC	1-year	400W total power
15.4W	PD-6506/AC/M	6	X		AC	Limited lifetime	
15.4W	PD-6506G/AC/M	6	X	X	AC	Limited lifetime	
15.4W	PD-6512/AC/M	12	X		AC	Limited lifetime	
15.4W	PD-6512G/AC/M	12	X	X	AC	Limited lifetime	
15.4W	PD-6524/AC/M	24	X		AC	Limited lifetime	200W total power
15.4W	PD-6524G/AC/M	24	X	X	AC	Limited lifetime	200W total power
15.4W	PD-6524/AC/M/F	24	X		AC	Limited lifetime	400W total power
15.4W	PD-6524/G/AC/M/F	24	X	X	AC	Limited lifetime	400W total power
30W	PD-9001G/AC	1		X	AC	1-year	
36W	PD-9006G/ACDC/M	6	X	X	AC & DC	Limited lifetime	
36W	PD-9012G/AC	12		X	AC	Limited lifetime	
36W	PD-9012G/ACDC/M	12	X	X	AC & DC	Limited lifetime	
36W	PD-9024G/AC	24		X	AC	Limited lifetime	450W total power
36W	PD-9024G/ACDC/M	24	X	X	AC & DC	Limited lifetime	450W total power
36W	PD-9024G/DC/M	24	X	X	DC	Limited lifetime	
36W	PD-9024G/AC/F	24		X	AC	Limited lifetime	1000W total power
36W	PD-9024G/ACDC/M/F	24	X	X	AC & DC	Limited lifetime	1000W total power
72W	PD-9501G/AC	1		X	AC	1-year	
72W	PD-9506G/ACDC/M	6	X	X	AC & DC	Limited lifetime	
72W	PD-9512G/ACDC/M	12	X	X	AC & DC	Limited Lifetime	

## Midspans for Outdoor Installations

Watts Per Port	Product Number	Number of Ports	Remotely Managed	Gigabit	Input	Warranty	Other
30W	PD-9001GO/AC	1		X	AC	1-year	Outdoor deployment
40W	PD-9001G-40/SP/AC	1		X	AC	1-year	Indoor deployment

# PowerDsine®

PowerDsine@microsemi.com



Microsemi Corporate Headquarters  
One Enterprise, Aliso Viejo, CA 92656  
Phone: 949.380.6100 Fax: 949.215.4996  
www.microsemi.com

Microsemi Corporation (Nasdaq: MSCC) offers a comprehensive portfolio of semiconductor solutions for: aerospace, defense and security; enterprise and communications; and industrial and alternative energy markets. Products include high-performance, high-reliability analog and RF devices, mixed-signal and RF integrated circuits, customizable SoCs, FPGAs, and complete subsystems. Microsemi is headquartered in Aliso Viejo, Calif.

Learn more at [www.microsemi.com/PowerDsine](http://www.microsemi.com/PowerDsine).

©2011 Microsemi Corporation. All rights reserved. Microsemi and the Microsemi logo are trademarks of Microsemi Corporation. All other trademarks and service marks are the property of their respective owners.

Printed on recycled paper.

PD-PC.0911