



## The new printing paradigm

# HP PageWide Enterprise Color MFP 780, 785 series



Affordable colour printing  
for every office



Minimal interruptions.  
Maximum uptime.



The world's most  
secure printing<sup>1</sup>



# Affordable colour printing for every office



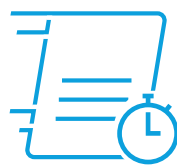
Colour printing is within every business' budget with HP PageWide Technology. Print professional-quality colour for a breakthrough low cost on sizes up to 305 x 457 mm—results you expect from HP for an exceptional value you can rely on.



## Breakthrough low-cost colour

Depend on lasting value. Get the results you expect from HP PageWide Technology that delivers a game-changing low cost per colour page.

Original HP PageWide cartridges provide the consistent printing performance, quality, and affordability businesses demand. Optional high-yield cartridges offer an even better value, so you can print more pages and replace cartridges less often.<sup>3</sup> Quickly access and replace cartridges—simply push twice to insert or remove.



## Fast performance, economical prints

Equip employees to speed through tasks with high-performance, professional-quality printing. Print even faster—and save even more per page—by setting your MFP to General Office mode.<sup>4</sup> Get the quality your business needs while helping to reduce printing costs.

Minimise interruptions in productivity with an HP PageWide Enterprise MFP designed with the fewest parts in its class for the least maintenance.<sup>5</sup>



## Best-in-class energy efficiency<sup>2</sup>

Help keep energy costs down with the most efficient MFP in its class.<sup>2</sup> HP PageWide Technology conserves resources without compromising performance.

This MFP meets rigorous standards for ISO class 5 cleanrooms—perfect for sensitive environments. Keep noise to a minimum with a device designed to be quiet. Place it near people without disrupting work.

Help reduce your environmental impact. Consume up to 50% less paper, with automatic two-sided printing. Easily recycle your Original HP cartridges at no charge through HP Planet Partners.<sup>6</sup>

# Minimal interruptions. Maximum uptime.

Annoying interruptions and complex maintenance can slow down printing and, ultimately, the pace of business. Avoid pauses in productivity with an HP PageWide device designed for maximum uptime—so you can count on reliable results day in and day out.

## Move business forward

Print up to 50% faster than the competition<sup>7</sup>—as fast as 75 pages per minute (ppm) (Flow MFP 785 models).<sup>8</sup> These devices wake up and print fast, so your documents are ready quickly.

Accelerate workflow with single-pass, two-sided scanning up to 120 images per minute (ipm), simplex, and up to 240 ipm, duplex (Flow MFP 785 models).<sup>9</sup>



HP makes mobile printing easy with a variety of options that help users print and help IT keep the network safe. Detect nearby printers from a mobile device and quickly connect to print with Bluetooth<sup>®</sup> Low Energy.<sup>10</sup> Easily access, print, and share resources with Ethernet and Wi-Fi Direct<sup>®</sup>.<sup>11</sup>

## Launch tasks at the device

Preview and edit scans, adjust images, and launch print, scan, copy, and fax jobs<sup>12</sup>—all at the 20.3 cm colour touchscreen. For more information, see Appendix A on page 16.

For easy access USB printing, use the USB port near the control panel.<sup>13</sup>



Turn paper files into digital assets and send your work to more places without using a PC. Scan documents directly to Microsoft<sup>®</sup> Office 365<sup>®</sup> and SharePoint<sup>®</sup>, plus email, USB, and network folders.<sup>14</sup>

## Expand your capacity

Tailor this MFP to the needs of your business with a wide range of paper-handling accessories. Optional trays support media sizes up to 305 x 457 mm, including a 550-sheet paper tray, 550-sheet paper tray and stand, and 3x550-sheet paper tray and stand.<sup>15</sup>

Print up to 4,650 pages without reloading paper, using the optional 4,000-sheet high-capacity input (HCI) tray and stand, with support for A4 size.<sup>15</sup>



Organise, staple, collate, and hole-punch documents with advanced external finishing that helps you ramp up production. Count on robust performance with a maximum output capacity of up to 3,250 sheets, four hole-punch options, and the ability to staple up to 50 pages in professionally attached sets (Flow MFP 785z+ model only).<sup>16</sup>

# The world's most secure printing<sup>1</sup>



Only HP Enterprise printers repair themselves from attacks in real time, with built-in security to help keep your network safe. Automatically monitor threats, detect intrusions, and validate operating software with security offered only by HP.<sup>1</sup>



## Always on guard

Only HP Enterprise printers offer built-in security features that are always on guard.<sup>1</sup>

- With HP Sure Start, each device regularly checks its operating code and repairs itself from attempted hacks.
- Whitelisting checks firmware during startup to help ensure it's authentic, good code—digitally signed by HP.
- Run-time intrusion detection continually monitors activity to detect and stop attacks, then automatically reboots.
- HP Connection Inspector checks your MFP's outgoing network connections to stop suspicious requests and thwart malware.

Thwart potential attacks by receiving instant notification of security issues, so immediate action can be taken. This MFP works with tools like Splunk, McAfee, ArcSight, and SIEMonster.

► [For more information](#)



## Take security to the next level

Help protect this MFP with more than 200 embedded security features.<sup>17</sup> Protect information in transit over the network and stored on the device—keys, passwords, certificates, and more. Store data on the 256-bit encrypted HP High-Performance Secure Hard Disk.

Easily develop, deploy, and integrate HP and third-party solutions with HP Open Extensibility Platform (OXF). Add features such as card readers and more through the Hardware Integration Pocket (HIP).<sup>18</sup> Further safeguard data stored on the device, using the standard HP Trusted Platform Module.<sup>19</sup>



## Centralise control to help build business efficiency

Centralise control of your printing environment with HP Web Jetadmin—and help build business efficiency.<sup>20</sup> Optional HP JetAdvantage Security Manager offers an effective, policy-based approach to help secure HP printing and imaging devices.<sup>21</sup>

HP JetAdvantage Secure Print<sup>22</sup> and HP Access Control (HPAC) help secure documents by requiring authentication to release print jobs. In addition, extend capabilities and easily customise with HPAC—integrate job accounting, manage rights, and establish quotas for things such as colour use.<sup>23</sup> Save IT time and make printing easy for the entire enterprise by using a single driver for all HP devices.<sup>24</sup>

### Fleet management

HP Web Jetadmin visit: [hp.com/go/wja](http://hp.com/go/wja)

Solution brief: <http://h20195.www2.hp.com/V2/GetPDF.aspx/4AA5-2719EEW.pdf>

Video: <http://hp.brightcovegallery.com/solutions/detail/video/4271055504001/>

HP Universal Print Driver visit: [hp.com/go/upd](http://hp.com/go/upd)

Solution brief: <http://h20195.www2.hp.com/V2/GetPDF.aspx/4AA2-4781EEW>

### Security

HP JetAdvantage Security Solutions visit: [hp.com/go/printsecurity](http://hp.com/go/printsecurity)

Solution brief: <http://h20195.www2.hp.com/V2/GetPDF.aspx/4AA3-1295EEW.pdf>

Video: <http://hp.brightcovegallery.com/products/detail/video/4270905124001/>

HP JetAdvantage Security Manager visit: [hp.com/go/securitymanager](http://hp.com/go/securitymanager)

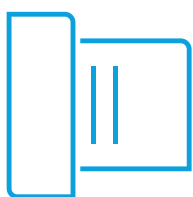
Brochure: <http://h20195.www2.hp.com/V2/GetPDF.aspx/4AA3-9275EEW.pdf>

Video: <http://hp.brightcovegallery.com/products/detail/video/4270837770001/>

# Give workgroups the speed they need



Accelerate workflow, improve accuracy, and easily connect people throughout your organisation. Complete high-volume scan jobs super-fast—up to 240 ipm for Flow models<sup>9</sup>—and avoid extra steps with an MFP designed for maximum productivity.



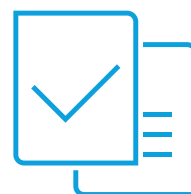
## Easily scan and edit text

Capture text from documents with high accuracy. Easily scan documents, edit text, and save as a Microsoft Word or searchable PDF file with HP Scan and I.R.I.S. Readiris™ Pro OCR Software.



## Fast scanning and input







Turn stacks of paper documents into digital files. Load up to 200 pages into the automatic document feeder (ADF) for fast, unattended scanning.<sup>25,26</sup>  
Enter data more quickly and accurately using the pull-out keyboard, one of the features available on all Flow models.<sup>27</sup>



## Every page, every time

Capture every page easily—with confidence. HP EveryPage gives employees smooth paper-handling capabilities to detect potential errors or missed pages on the spot—for scan jobs of all kinds.  
Help ensure every scanned document is properly oriented, cropped to size, and greyscale-optimised.

### Flow MFP features<sup>27</sup>

 <p>HP EveryPage featuring ultrasonic multi-feed detection</p>	 <p>240 ipm<sup>9</sup></p> <p>Faster scan speeds</p>	 <p>Automatic page orientation, auto-crop, and auto-tone</p>
 <p>Pull-out keyboard<sup>27</sup></p>	 <p>Built-in OCR</p>	 <p>75,000 RMSV<sup>26</sup></p> <p>Extended-life ADF</p>

# Get to know the HP PageWide Enterprise Color MFP 780 series

HP PageWide Enterprise Color MFP 780dns shown



## Series at a glance



MFP 780dn      MFP 780dns      Flow MFP 785f      Flow MFP 785zs      Flow MFP 785z+

	MFP 780dn	MFP 780dns	Flow MFP 785f	Flow MFP 785zs	Flow MFP 785z+
Part number	J7Z09A	J7Z10A	J7Z11A	J7Z12A	Z5G75A
Print speeds, black and colour, A4 and letter <sup>8</sup>	Up to 45/65 ppm, Professional/General Office mode	Up to 45/65 ppm, Professional/General Office mode	Up to 55/75 ppm, Professional/General Office mode	Up to 55/75 ppm, Professional/General Office mode	Up to 55/75 ppm, Professional/General Office mode
Fax capabilities	Optional	Optional	✓	✓	✓
Advanced workflow features including pull-out keyboard, OCR, HP EveryPage, and auto-orientation <sup>27</sup>	Not available	Not available	✓	✓	✓
Wireless networking <sup>28</sup>	Optional wireless direct <sup>29</sup>	Optional wireless direct <sup>29</sup>	Optional wireless direct <sup>29</sup>	Built-in Wi-Fi Direct <sup>11</sup>	Built-in Wi-Fi Direct <sup>11</sup>
Bluetooth Low Energy <sup>10</sup>	Not available	Not available	Not available	✓	✓
350-sheet inner finisher with stapler <sup>30</sup>	Not available	✓	Not available	✓	Not available
3,250-sheet external finisher with stapler <sup>16</sup>	Not available	Not available	Not available	Not available	✓ (Required)
Paper-handling	For information on optional, standard, and required paper-handling capabilities for each model, please see page 9.				

# Get to know the HP PageWide Enterprise Color Flow MFP 785 series

HP PageWide Enterprise Color Flow MFP 785z+ shown





# Paper-handling capabilities

The HP PageWide Enterprise Color MFP 780 and 785 series models come standard with a 100-sheet multipurpose tray that supports media up to 305 x 457 mm and one 550-sheet tray that supports media up to 297 x 432 mm. Other input and finisher accessories are described in the table below.

The Flow MFP 785zs comes standard with the 3x550-sheet paper tray and stand. It does not support any other input accessory.

The Flow MFP 785z+ is required to add one of the following tray/stand accessories: 550-sheet paper tray and stand, 3x550-sheet paper tray and stand, or 4,000-sheet HCI paper tray and stand. Only one tray/stand accessory can be used. It does not support the optional 550-sheet paper tray without stand.

Other optional accessories, such as hole punch accessories, are included in the Ordering information on page 15.

<b>550-sheet Paper Tray (A7W99A)</b>	<b>550-sheet Paper Tray and Stand (W1B50A)</b>	<b>3x550-sheet Paper Tray and Stand (W1B51A)</b>	<b>4,000-sheet HCI Paper Tray and Stand (W1B52A)</b>	<b>350-sheet inner finisher with stapler</b>	<b>3,250-sheet external finisher with stapler (Z4L04A)<sup>16</sup></b>
Supports up to 297 x 432 mm	Supports up to 297 x 432 mm	Supports up to 297 x 432 mm	Two 2,000-sheet trays that support A4	Staples up to 50 sheets per set	Staples up to 50 sheets per set
<b>Required:</b> Flow 785z+ model must add one tray/stand accessory				<b>Standard:</b> 780dns, Flow 785zs	<b>Required:</b> Flow 785z+
<b>Not available:</b> Flow 785zs, Flow 785z+	<b>Not available:</b> Flow 785zs	<b>Standard:</b> Flow 785zs	<b>Not available:</b> Flow 785zs	<b>Not available:</b> 780dn, Flow 785f, Flow 785z+	<b>Not available:</b> 780dn, 780dns, Flow 785f, Flow 785zs
<b>Optional:</b> Add up to one: 780dn, 780dns, Flow 785f	<b>Optional:</b> Add up to one: 780dn, 780dns, Flow 785f	<b>Optional:</b> Add up to one: 780dn, 780dns, Flow 785f	<b>Optional:</b> Add up to one: 780dn, 780dns, Flow 785f		
Maximum device input with accessory: <sup>31</sup>				Maximum output with finisher:	
1,200 sheets	1,200 sheets	2,300 sheets	4,650 sheets	850 sheets	3,250 sheets

Note: Only one input accessory can be added at a time.

# What's new



## HP PageWide Enterprise Color Flow MFP 785z+

Supports paper sizes up to 305 x 457 mm

Up to 4,650 sheets input;<sup>31</sup> up to 3,250 sheets output, with required external finisher

Single-pass, two-sided ADF scanning up to 120 ipm, simplex, up to 240 ipm, duplex;<sup>9</sup> up to 200 sheets input capacity; maximum scan size: 297 x 1000 mm<sup>25</sup>

3,250-sheet external finisher with stapler<sup>16</sup>

Detect nearby printers from a mobile device, quickly connect, and easily print with **Bluetooth Low Energy** connectivity<sup>10</sup>

RMPV:<sup>32</sup> 2,500 pages to as high as 25,000 pages  
RMSV:<sup>26</sup> 2,000 pages to as high as 75,000 pages

Standard HP Trusted Platform Module (TPM)<sup>19</sup>

HP Connection Inspector checks outgoing network connections



## HP PageWide Enterprise Color Flow MFP 586z

Supports paper sizes up to 216 x 356 mm

Up to 2,050 sheets input;<sup>31</sup> up to 300 sheets output

Single-pass, two-sided ADF scanning up to 47 ppm, simplex, up to 74 ipm, duplex;<sup>9</sup> up to 100 sheets input capacity; maximum scan size: 216 x 356 mm

Not available

Bluetooth Low Energy not available

RMPV:<sup>33</sup> 2,000 pages to as high as 7,500 pages  
RMSV:<sup>27</sup> 8,350 pages to as high as 13,900 pages

Optional TPM

Available with a firmware update

# Technical specifications

	HP PageWide Enterprise Color MFP 780dn	HP PageWide Enterprise Color MFP 780dns	HP PageWide Enterprise Color Flow MFP 785f	HP PageWide Enterprise Color Flow MFP 785zs	HP PageWide Enterprise Color Flow MFP 785z+
<b>Product number</b>	J7Z09A	J7Z10A	J7Z11A	J7Z12A	Z5G75A
<b>Control panel/data entry</b>	20.3 cm (8.0-inch) pivoting colour touchscreen; easy-access USB port; <sup>13</sup> Hardware Integration Pocket <sup>18</sup>				
	Plus: pull-out keyboard				
<b>Print speed (A4 and letter, black and colour)<sup>8</sup></b>					
Single-sided	Up to 45/65 ppm, Professional/General Office mode		Up to 55/75 ppm, Professional/General Office mode		
Two-sided	Up to 31/45 ipm, Professional mode/General Office mode		Up to 38/52 ipm, Professional mode/General Office mode		
<b>First page out (A4 and letter, black and colour)</b>	From ready: <sup>33</sup> as fast as 7.0 seconds ( <i>all models</i> )				
	From sleep: <sup>34</sup> as fast as 17.5 seconds ( <i>all models</i> )				
<b>Print resolution</b>	Black: Up to 1200 x 1200 optimised dpi from 600 x 600 input dpi (on Unspecified, Plain, HP Premium Presentation Matte, and HP Brochure Matte); Colour: Up to 2400 x 1200 optimised dpi from 600 x 600 input dpi (on HP Advanced Photo Papers)				
<b>Scanning resolution</b>	Up to 600 dpi ( <i>all models</i> )				
<b>ADF scan speed (A4 and letter)<sup>9</sup></b>					
Single-sided	Up to 90 ipm (black and colour)		Up to 120 ipm (black and colour)		
Two-sided	Up to 180 ipm (black and colour)		Up to 240 ipm (black and colour)		
<b>Features</b>					
Printing	HP PageWide Technology with pigmented inks, HP EasyColor, print preview, automatic two-sided printing, print multiple pages per sheet (2, 4, 6, 9, 16), collation, booklet printing, cover pages, tray selection, scaling, portrait/landscape orientation, high-quality greyscale and black ink only, General Office/Professional/Presentation dpi print modes, control panel shortcuts, store print jobs; print from easy-access USB Microsoft Word and PowerPoint files				
Scanning	Flatbed scanner: 297 x 432 mm (11.7 x 17 in); 200-sheet ADF with single-pass, two-sided scanning up to 297 x 1000 mm (11.7 x 39 in); <sup>25</sup> Advanced features: optimise text/picture, image adjustments, job build, output quality setting, selectable scan resolution 75 to 600 dpi, auto detect colour, edge erase, job notification, blank page suppression, Quick Sets; bit depth: 24-bit (colour); 8-bit (grey); Scan file type supported by software: Bitmap (.bmp), JPEG (.jpg), PDF (.pdf), PNG (.png), Rich Text (.rtf), Searchable PDF (.pdf), Text (.txt), TIFF (.tif); TWAIN version 2.1 <sup>35</sup>				
	Plus: HP EveryPage with ultrasonic multi-feed detection, embedded optical character recognition (OCR), auto-orientation, auto-crop-to-page, auto-tone				
Digital sending	Scan to email with LDAP email address lookup, scan to network folder, scan to USB, send to FTP, send to Internet fax, SMTP over SSL, blank page removal, edge erase, auto colour sense, auto crop to content, compact PDF, scan to Microsoft SharePoint <sup>36</sup>				
	Plus: send to LAN fax; OCR, auto-tone, auto-orientation, multi-pick detect, auto-straighten, auto-crop-to-page				
File formats <sup>35</sup>	Digital send: PDF, JPEG, TIFF, MTIFF, XPS, PDF/A; Scan to easy-access USB: PDF, JPEG, TIFF, MTIFF, XPS, PDF/A; Print from easy-access USB: <sup>13</sup> PDF, PS, print ready files (.prn, .pcl, .cht)				
	Plus (OCR): TEXT, Unicode TEXT, RTF, Searchable PDF, Searchable PDF/A, HTML, CSV; Scan to easy-access USB: TEXT, Unicode TEXT, RTF, Searchable PDF, Searchable PDF/A, HTML, CSV				
Copying (A4 and letter, black and colour) <sup>37</sup>	Auto scale, reduce/enlarge from scanner glass (25 to 400%), collate, auto-colour detection, two-sided copying, job build, image adjustments (darkness, background clean-up, sharpness); Copy resolution: Up to 600 x 600 dpi				
	Copy speed: up to 45 copies per minute (cpm) First copy out: as fast as 9.4 seconds		Copy speed: up to 55 cpm First copy out: as fast as 9.4 seconds		
Faxing	Fax speed: <sup>38</sup> 33.6 kbps/3 seconds per page (A4/letter); fax forwarding, receive fax polling, broadcasting to up to 210 locations, speed dial up to 1,000 numbers, each with 210 destinations, auto-fax reduction, auto-redialling, stored faxes, fax archiving, scale-to-fit, fax address book, LAN/Internet fax, fax number confirmation, holiday fax schedule Fax resolution: Black (standard): 204 x 98 dpi, black (fine): 204 x 196 dpi, black (photo greyscale): 300 x 300 dpi (400 x 400 dpi for received faxes only); Colour: 300 x 300 dpi (400 x 400 dpi for received faxes only)				
<b>Processor</b>	1.2 GHz ( <i>all models</i> )				
<b>Memory</b>	3584 MB (standard/max) <sup>39</sup>		5632 MB (standard/max) <sup>40</sup>		

	HP PageWide Enterprise Color MFP 780dn	HP PageWide Enterprise Color MFP 780dns	HP PageWide Enterprise Color Flow MFP 785f	HP PageWide Enterprise Color Flow MFP 785zs	HP PageWide Enterprise Color Flow MFP 785z+
<b>Storage</b>	High-Performance Secure Hard Disk (AES 256 hardware encryption or greater; Secure erase capabilities: Secure File Erase-Temporary Job Files, Secure Erase-Job Data, Secure ATA Erase-Disk)				
<b>Durability ratings</b>					
RMPV <sup>32</sup>	2,500 pages to as high as 20,000 pages		2,500 pages to as high as 25,000 pages		
RMSV <sup>26</sup>	2,000 pages to as high as 50,000 pages		2,000 pages to as high as 75,000 pages		
Duty cycle <sup>41</sup>	Up to 100,000 pages		Up to 125,000 pages		
<b>Media specifications</b>					
Input capacity	Up to 650 sheets (up to 4,650 sheets maximum <sup>31</sup> ) Tray 1: up to 100 sheets Tray 2: up to 550 sheets	Up to 650 sheets (up to 4,650 sheets maximum <sup>31</sup> ) Tray 1: up to 100 sheets Tray 2: up to 550 sheets	Up to 650 sheets (up to 4,650 sheets maximum <sup>31</sup> ) Tray 1: up to 100 sheets Tray 2: up to 550 sheets	Up to 2,300 sheets (up to 4,650 sheets maximum <sup>31</sup> ) Tray 1: up to 100 sheets Tray 2: up to 550 sheets 3x550-sheet feeder and stand	Up to 650 sheets (up to 4,650 sheets maximum <sup>31</sup> ) Tray 1: up to 100 sheets Tray 2: up to 550 sheets
Output capacity	Up to 500 sheets	Up to 850 sheets; including 350-sheet inner finisher with stapler	Up to 500 sheets	Up to 850 sheets; including 350-sheet inner finisher with stapler	Up to 3,250 sheets; including external finisher with stapler <sup>16</sup>
Two-sided printing	Automatic ( <i>all models</i> )				
Media sizes	Tray 1: RA3, A3, 8K, B4 (JIS), SRA4, RA4, A4, A4-R, 16K, 16K-R, A5, A5-R, B5 (JIS), B5 (JIS)-R, B6 (JIS), A6, Japanese Postcard, Double Japanese Postcard-R; 12 x 18 in, 11 x 17 in, legal, oficio, letter, letter-R, executive, executive-R, 5 x 8 in, 5 x 7 in, 4 x 6 in; Custom media sizes: 99.1 x 127 to 305 x 457 mm (3.9 x 5.83 to 12 x 18 in) Trays 2-5: A3, 8K, B4 (JIS), SRA4, RA4, A4, A4-R, 16K, 16K-R, A5, A5-R, B5 (JIS), B5 (JIS)-R, B6 (JIS), A6, Japanese Postcard, Double Japanese Postcard-R; 11 x 17 in, legal, oficio, letter, letter-R, executive, executive-R, 5 x 8 in, 5 x 7 in, 4 x 6 in; Custom media sizes: 210.1 x 148.1 to 297.2 x 431.8 mm (8.27 x 5.83 to 11.70 x 17 in) HCI Trays 3 and 4: A4 and letter only Duplex: 10 x 15 cm, RA3, A3, A4, 8K (260 x 368 mm), 8K (270 x 390 mm), 8K (273 x 394 mm), B4, SRA4, RA4, 16K (184 x 260 mm), 16K (195 x 270 mm), 16K (197 x 273 mm), A5, A5-R, B5 (JIS), B5 (JIS)-R, B6 (JIS), A6, Postcard (JIS), oficio (216 x 340 mm); 12 x 18 in, 11 x 17 in, legal, oficio (8.5 x 13 in), letter, letter-R, executive, executive-R ADF: A3, ledger, B4-JIS, A4, B5-JIS, A5, B6-JIS, A6; 11.7 x 39 in, legal, 8.5 x 13 in, letter				
Media weights	Tray 1: 60 to 220 g/m <sup>2</sup> (16 to 58 lb), 300 g/m <sup>2</sup> (80 lb) photo paper only Trays 2-5, HCI: 60 to 220 g/m <sup>2</sup> (16 to 58 lb) ADF: 45 to 199 g/m <sup>2</sup> (12 to 53 lb)				
Media types	Paper (plain, inkjet, inkjet brochure/glossy), photo paper, envelopes, labels, cards				
<b>Print languages</b>	HP PCL 6, HP PCL 5c, HP postscript level 3 emulation, PDF 1.7				
<b>Fonts</b>	105 internal TrueType fonts scalable in HP PCL, 92 internal scalable fonts in HP Postscript level 3 emulation (Euro symbol built-in); 1 internal Unicode Font (Andale Mono WorldType); 2 Internal Windows Vista® 8 Fonts (Calibri, Cambria); additional font solutions available via third-party flash memory cards; HP LaserJet Fonts and IPDS Emulation available at <a href="http://hp.com/go/laserjetfonts">hp.com/go/laserjetfonts</a>				
<b>Connectivity</b>	2 Hi-Speed USB 2.0 Host; 1 Hi-Speed USB 2.0 Device; 1 Gigabit Ethernet 10/100/1000T network; 1 RJ-11 modem port/phone line; 1 Hardware Integration Pocket <sup>18</sup>				
	Plus: Fax				
<b>Mobile printing</b>	HP ePrint, <sup>42</sup> Apple AirPrint, <sup>43</sup> Mopria-certified, Google Cloud Print™ 2.0 ( <i>all models</i> )				
	Optional: Wireless direct printing <sup>11</sup> and NFC touch-to-print <sup>44</sup> (with purchase of HP Jetdirect 3000w NFC/Wireless Accessory)			Plus: Wi-Fi Direct <sup>11</sup> and Bluetooth Low Energy <sup>10</sup>	
<b>Network capabilities</b>	Standard: via HP Jetdirect Ethernet embedded print server supports: 10Base-T, 100Base-Tx, 1000Base-T; 802.3az (EEE) support on Fast Ethernet and Gigabit Ethernet; IPsec				
	Optional: 802.11a/b/g/n wireless networking (with purchase of optional HP Jetdirect 2900nw Print Server) <sup>29</sup>			Plus: 802.11b/g/n wireless networking <sup>11</sup>	
<b>Network protocols</b>	IPv4/IPv6: Apple Bonjour Compatible (Mac OS v10.2.4 or higher), SNMPv1/v2c/v3, HTTP, HTTPS, FTP, TFTP, Port 9100, LPD, WS Discovery, IPP, Secure-IPP, IPsec/Firewall; IPv6: DHCPv6, MLDv1, ICMPv6; IPv4: Auto-IP, SLP, Telnet, IGMPv2, BOOTP/DHCP, WINS, IP Direct Mode, WS Print				

	HP PageWide Enterprise Color MFP 780dn	HP PageWide Enterprise Color MFP 780dns	HP PageWide Enterprise Color Flow MFP 785f	HP PageWide Enterprise Color Flow MFP 785zs	HP PageWide Enterprise Color Flow MFP 785z+
<b>Security</b>	<p>Identity Management: Kerberos authentication, LDAP authentication, 1000 user PIN codes, optional HP and third-party advanced authentication solutions (e.g., badge readers)</p> <p>Network: IPsec/firewall with Certificate, Pre-Shared Key, and Kerberos authentication, Supports WJA-10 IPsec configuration Plug in, 802.1X authentication (EAP-PEAP, EAP-TLS), SNMPv3, HTTPS, Certificates, Access Control List, HP Trusted Platform Module (TPM) comes standard</p> <p>Data: Storage Encryption, Encrypted PDF &amp; Email (uses FIPS 140 validated cryptographic libraries from Microsoft), Secure Erase, SSL/TLS (HTTPS), Encrypted Credentials</p> <p>Device: Security lock slot, USB port disablement, Hardware Integration Pocket for security solutions,<sup>19</sup> Intrusion Detection with Red Balloon Security Technology (constant in-device monitoring for attacks), HP Sure Start Secure Boot (BIOS integrity checking with self-healing capability), Whitelisting (loads only known good code (DLLs, EXEs, etc.)), HP Connection Inspector (checks outgoing network connections to stop suspicious requests; may require a firmware update)</p> <p>Security Management: Compatible with HP JetAdvantage Security Manager,<sup>21</sup> Device Security Syslog Messages processed and accessible in ArcSight, Splunk, McAfee, and SIEMonster SIEMs</p> <p>For more security settings go to <a href="http://h10032.www1.hp.com/ctg/Manual/c03602120">http://h10032.www1.hp.com/ctg/Manual/c03602120</a></p>				
<b>Printer management</b>	<p>HP JetAdvantage Security Manager;<sup>21</sup> HP SNMP Proxy Agent; HP Web Jetadmin Software;<sup>20</sup> HP WS Pro Proxy Agent; Printer Administrator Resource Kit for HP Universal Print Driver<sup>24</sup></p>				
<b>Compatible operating systems<sup>45</sup></b>	<p>Windows® OS: Windows 10 all 32- and 64-bit editions (excluding RT OS for Tablets), Windows 7 all 32- and 64-bit editions, Windows 8/8.1 all 32- and 64-bit editions (excluding RT OS for Tablets), Windows Vista all 32-bit editions (Home Basic, Premium, Professional, etc.), Windows XP SP3 32-bit editions (XP Home, XP Pro, etc.)</p> <p>Mac OS: 10.12 Sierra, OS X 10.10 Yosemite, OS X 10.11 El Capitan</p> <p>Mobile OS: Android™</p> <p>Linux Boss (5.0), Linux Debian (7.0, 7.1, 7.2, 7.3, 7.4, 7.5, 7.6, 7.7, 7.8, 7.9, 8.0, 8.1, 8.2, 8.3, 8.4, 8.5, 8.6), Linux Fedora (22, 23, 24), Linux Mint (17, 17.1, 17.2, 17.3, 18), Linux Red Hat Enterprise (6.0, 7.0), Linux SUSE (13.2, 42.1), Linux Ubuntu (12.04, 14.04, 15.10, 16.04, 16.10)</p> <p>Other OS: UNIX®</p>				
<b>Compatible network operating systems</b>	<p>Citrix MetaFrame Presentation Server 3.0, Citrix MetaFrame XP Presentation Server (Feature Release 1, 2, and 3), Citrix on Windows Server® 2003/2003R2, Citrix on Windows Server 2008/2008R2/2008 R2 SP1, Citrix on Windows Server 2012/2012R2, Citrix Presentation Server 4.0/4.5, Citrix XenApp 5.0 (plus Feature Pack 2 &amp; 3) for Windows Server 2008 Terminal Services 32- and 64-bit, Citrix XenApp 6.0/6.5 (for Windows Server 2008 R2 Terminal Services, 32- and 64-bit), Citrix XenApp 6.0/6.5/7.5 (for Windows Server 2008 R2 SP1 Terminal Services, 32- and 64-bit), Citrix XenApp 7.5 (for Windows Server 2012 and 2012 R2 Terminal Services, 64-bit), Citrix XenDesktop 5.6 (for Windows Server 2008 R2 Terminal Services, 32- and 64-bit), Citrix XenDesktop 5.6/7.0/7.5 (for Windows Server 2008 R2 SP1 Terminal Services, 32- and 64-bit), Citrix XenDesktop 7.0/7.5 (for Windows Server 2012 and 2012 R2 Terminal Services, 64-bit)</p> <p>Novell NetWare 6.5/SP8 Novell Clients <a href="http://novell.com/iprint">novell.com/iprint</a>, Novell iPrint Appliance v1.0, Novell Open Enterprise Server 11/SP1, Novell Open Enterprise Server 2 for Linux, Novell Servers <a href="http://novell.com/iprint">novell.com/iprint</a></p> <p>Windows Server 2003/2003 R2 32-/64-bit (SP1/SP2) Standard/Enterprise/Datacenter (+ Cluster &amp; Terminal Services), Windows Server 2003/2003 R2 32-bit (SP1/SP2), Standard/Enterprise (+ Cluster &amp; Terminal Services), Windows Server 2008 32-/64-bit (SP2) Standard/Enterprise (+ Cluster &amp; Terminal Services), Windows Server 2008 R2 64-bit (SP1) Standard/Enterprise (+ Cluster &amp; Terminal Services), Windows Server 2008/2008 R2 32-/64-bit (SP1/SP2) Standard/Enterprise/Datacenter (+ Cluster &amp; Terminal Services), Windows Server 2012/2012 R2 64-bit Standard/Foundation/Essentials/Datacenter (+ Cluster &amp; Terminal Services), Windows Server 2016/ 64-bit Standard/Essential/Datacenter (+ Cluster &amp; Terminal Services)</p>				
<b>System requirements, Windows</b>	<p>A compatible operating system (see above); Internet; 2 GB available hard disk space; OS hardware requirements (see <a href="http://microsoft.com">microsoft.com</a>)</p>				
<b>System requirements, Macintosh</b>	<p>A compatible operating system (see above); Internet; 1.3 GB available hard disk space; OS hardware requirements (see <a href="http://apple.com">apple.com</a>)</p>				
<b>Dimensions (width x depth x height)</b>	<p>Operating: 813 x 591 x 458 mm (32 x 23.25 x 18 in)</p> <p>Maximum:<sup>46</sup> 896 x 591 x 534 mm (35.25 x 23.25 x 21 in)</p>	<p>Operating: 813 x 616 x 791 mm (32 x 24.25 x 31.125 in)</p> <p>Maximum:<sup>46</sup> 896 x 718 x 791 mm (35.25 x 28.25 x 31.125 in)</p>	<p>Operating: 604 x 652 x 682 mm (23.8 x 25.7 x 26.9 in)</p> <p>Maximum:<sup>46</sup> 1530 x 1027 x 995 mm (60.2 x 40.4 x 39.2 in)</p>	<p>Operating: 604 x 652 x 1222 mm (23.8 x 25.7 x 48.1 in)</p> <p>Maximum:<sup>46</sup> 1530 x 1027 x 1535 mm (60.2 x 40.4 x 60.4 in)</p>	<p>Operating: 1245 x 693 x 1222 mm (49 x 27.3 x 48.1 in)</p> <p>Maximum:<sup>46</sup> 2495 x 1175 x 1535 mm (98.2 x 46.3 x 60.4 in)</p>
<b>Weight (with print cartridges)</b>	69 kg (153 lb)	82 kg (181 lb)	69.1 kg (152 lb)	119.7 kg (263.9 lb)	171 kg (376.3 lb)
<b>What's in the box</b>	<p>HP PageWide Enterprise Color Multifunction Printer; HP Setup Black PageWide Cartridge (~10,000 pages);<sup>47</sup> HP Setup Cyan PageWide Cartridge, HP Setup Magenta PageWide Cartridge, HP Setup Yellow PageWide Cartridge (CMY composite ~8,000 pages);<sup>47</sup> Installation guide; Support flyer; documentation on CD-ROM; Power cord</p>				
<b>Warranty</b>	<p>One-year, next-business day, onsite warranty; Warranty and support options vary by product, country, and local legal requirements. Go to <a href="http://hp.com/support">hp.com/support</a> to learn about HP world-class service and support options in your region.</p>				
<b>Software included<sup>35</sup></b>	<p>HP Connected, HP Device Experience (DXP), HP PCL 6 (XPS) Printer Driver, HP Software Installer/Uninstaller, Mac OS Welcome Screen (directs users to <a href="http://123.HP.com">123.HP.com</a> or OS App Source for printer software), online user manuals</p>				

# Environmental and power specifications

	HP PageWide Enterprise Color MFP 780dn	HP PageWide Enterprise Color MFP 780dns	HP PageWide Enterprise Color Flow MFP 785f	HP PageWide Enterprise Color Flow MFP 785zs	HP PageWide Enterprise Color Flow MFP 785z+
<b>Environmental ranges</b>					
Temperatures	Recommended operating: 17 to 25° C (63 to 77° F); Operating: 15 to 30° C (59 to 86° F); Storage before initial setup (Non-Purged): -40 to 60° C (-40 to 140° F); Storage after initial setup (Purged): 0 to 60° C (32 to 140° F) <sup>48</sup>				
Relative Humidity	Recommended operating range: 30 to 70% RH; Operating range: 10 to 80% RH; Non-operating range: 10 to 80% RH				
<b>Acoustic pressure emissions<sup>49</sup></b>	Ready mode: inaudible; Active print: 53 dB(A); Active scan: 56 dB(A) <sup>50</sup>	Ready mode: inaudible; Active print: 53 dB(A); Active scan: 56 dB(A) <sup>50</sup>	Ready mode inaudible; Active print: 54 dB(A); Active scan: 57 dB(A) <sup>51</sup>	Ready mode: inaudible; Active print: 51 dB(A); Active scan: 58 dB(A) <sup>52</sup>	Ready mode: 15 dB(A); Active print: 58 dB(A); Active scan: 58 dB(A) <sup>53</sup>
<b>Acoustic power emissions</b>	Ready mode: inaudible; Active print: 6.7 B(A); Active scan: 7.1 B(A) <sup>50</sup>	Ready mode: inaudible; Active print: 6.7 B(A); Active scan: 7.1 B(A) <sup>50</sup>	Ready mode: inaudible; Active print: 6.8 B(A); Active scan: 7.2 B(A) <sup>51</sup>	Ready mode: inaudible; Active print: 6.6 B(A); Active scan: 7.3 B(A) <sup>52</sup>	Ready mode: inaudible; Active print: 7.3 B(A); <sup>49</sup> Active scan: 7.4 B(A) <sup>53</sup>
<b>Power specifications<sup>54</sup></b>					
Power supply	Built-in; Input voltage: 100 to 240 VAC, 50/60 Hz				
Power consumption	Printing/copying: 650 watts; Ready: 29 watts; Sleep: 1.4 watts; Auto-Off/Manual On: 0.2 watts; Manual Off: 0.2 watts		Printing/copying: 660 watts; Ready: 42 watts; Sleep: 1.6 watts; AutoOff/Manual On: 0.2 watts; Manual Off: 0.2 watts		
Typical Electricity Consumption (TEC)	1.62 kWh/week (Blue Angel); 1.61 kWh/week (ENERGY STAR®)		1.96 kWh/week (BA); 2.01 kWh/week (ES)	1.96 kWh/week (BA); 2.02 kWh/week (ES)	4.009 kWh/week
Energy-saving features	HP Auto-On/Auto-Off Technology <sup>55</sup> ( <i>all models</i> )				
<b>Environmental specifications</b>	Blue Angel compliant; ENERGY STAR® certified; EPEAT® Silver <sup>56</sup> ( <i>all models</i> )				
<b>Safety and regulatory compliance</b>	EN 60950-1:2006 + A11:2009 +A1:2010 +A12:2011 +A2:2013; IEC 60950-1:2005 +A1:2009 +A2:2013; EN 62471:2008/IEC 62471:2010; EN 62479:2010/IEC 62479:2010; China CCC, GS, UL Listed; Other safety approvals as required by individual countries				
<b>Electromagnetic emission standard</b>	CISPR 22:2008 Class A, CISPR 32:2012 Class A, EN 55032:2012 Class A, FCC CFR 47 Part 15 Class A/ICES-003, Issue 6 Class A, EN 61000-3-3:2013, EN 61000-3-2:2014; Other EMC approvals as required by individual countries				
	Plus: EN 301 489-1 v2.1.1, EN 301 489-17 v3.1.1				
<b>Telecom compliance</b>	ES 203 021-1 v2.1.1; ES 203 021-2 v2.1.2; ES 203 021-3 v2.1.2; FCC Rules and Regulations 47 CFR Part 68; Other telecom approvals as required by individual countries				
	Plus: EN 300 328 v2.1.1, EN 300 330-2 v1.6.1, EN 301 893 v2.0.7				

# Ordering information

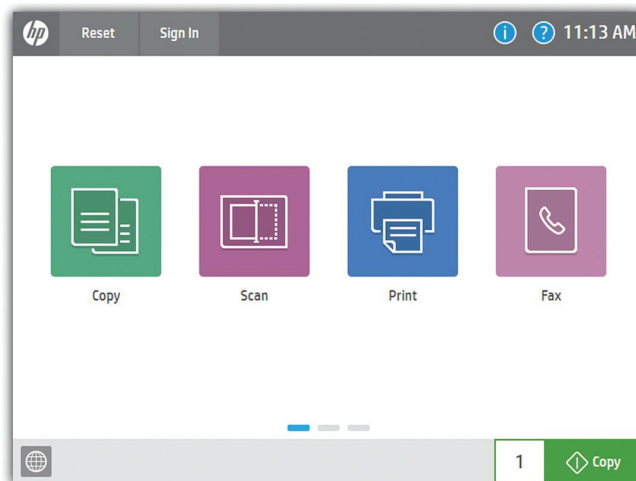
Use accessories and supplies specifically designed for the MFP to help provide efficient performance. To order the accessories and supplies listed here, go to [hp.com](http://hp.com). To contact HP by country, please visit [hp.com/go/contact](http://hp.com/go/contact). If you don't have access to the Internet, contact your qualified HP dealer or call HP (U.S.) at (800) 282-6672.

<b>Product</b>	HP PageWide Enterprise Color MFP 780dn HP PageWide Enterprise Color MFP 780dns HP PageWide Enterprise Color Flow MFP 785f HP PageWide Enterprise Color Flow MFP 785zs HP PageWide Enterprise Color Flow MFP 785z+	J7Z09A J7Z10A J7Z11A J7Z12A Z5G75A
<b>Supplies<sup>47</sup></b>	HP 982A Black Original PageWide Cartridge (~10,000 pages) HP 982X High Yield Black Original PageWide Cartridge (~20,000 pages) HP 982A Cyan Original PageWide Cartridge (~8,000 pages) HP 982X High Yield Cyan Original PageWide Cartridge (~16,000 pages) HP 982A Yellow Original PageWide Cartridge (~8,000 pages) HP 982X High Yield Yellow Original PageWide Cartridge (~16,000 pages) HP 982A Magenta Original PageWide Cartridge (~8,000 pages) HP 982X High Yield Magenta Original PageWide Cartridge (~16,000 pages) HP PageWide Printhead Wiper Kit (~150,000 pages) HP PageWide Service Fluid Container (~150,000 pages) HP PageWide Roller Kit (~150,000 pages) HP PageWide ADF Maintenance Kit (~150,000 pages) HP 110V Heated Pressure Roller (for 785z+ only) HP 220V Heated Pressure Roller (for 785z+ only) HP Staple Cartridge Refill (5,000 staples) (for 785dns and 785zs only) HP LaserJet Stapler/Stacker Finisher Staples (for Z4L04A)	T0B26A T0B30A T0B23A T0B27A T0B25A T0B29A T0B24A T0B28A W1B43A W1B44A W1B45A J8J95A 3MM39A 3MZ76A J8J96A Y1G14A
<b>Accessories</b>	HP PageWide 550-sheet Paper Tray HP PageWide 550-sheet Paper Tray and Stand HP PageWide 3x550-sheet Paper Tray and Stand HP PageWide 4000-sheet HCI Paper Tray and Stand HP PageWide Stapler/Stacker Finisher HP LaserJet Hole Punch 2/3 Accessory (for Z4L04A) HP LaserJet Hole Punch 2/4 Accessory (for Z4L04A) HP LaserJet Hole Punch Swedish Accessory (for Z4L04A) HP 1 GB DDR3 x 32 144-Pin 800 MHz SODIMM HP Foreign Interface Harness HP Jetdirect 2900nw Print Server HP Jetdirect 3000w NFC/Wireless Accessory <sup>44</sup> HP LaserJet MFP Analog Fax Accessory 500 HP Internal USB ports	A7W99A W1B50A W1B51A W1B52A Z4L04A Y1G10A Y1G11A Y1G12A E5K48A B5L31A J8O31A J8O30A CC487A B5L28A
<b>HP Services</b>	<p>Boost performance—it's your choice. HP Care provides options to help you manage imaging and printing—from Care Pack services to customisable and advisory services. With HP Managed Print Services, we oversee everything for you.</p> <p>Make sure your imaging and printing investments are protected with Care Pack, part of HP Care. Pick your package of services to keep your MFP running and your business moving. Now your office can spend less time trouble-shooting and more time getting things done. For a complete listing of HP Care Pack Service offerings, visit <a href="http://hp.com/go/cpc">hp.com/go/cpc</a>.<sup>57</sup></p>	<p>HP 3 yr Next Business Day with Defective Media Retention for PW Ent Color MFP 78x U9RJ6E HP 4 yr Next Business Day with Defective Media Retention for PW Ent Color MFP 78x U9RJ7E HP 5 yr Next Business Day with Defective Media Retention for PW Ent Color MFP 78x U9RJ8E HP 1 yr Post Warranty Next Business Day with Defective Media Retention for PW Ent Color MFP 78x U9RK5PE HP 2 yr Post Warranty Next Business Day with Defective Media Retention for PW Ent Color MFP 78x U9RK6PE</p>
<b>Solutions</b>	<p>HP Web Jetadmin: <a href="http://hp.com/go/wja">hp.com/go/wja</a> HP Universal Print Driver: <a href="http://hp.com/go/upd">hp.com/go/upd</a> HP JetAdvantage Security Manager: <a href="http://hp.com/go/securitymanager">hp.com/go/securitymanager</a> HP JetAdvantage On Demand Cloud Solutions: <a href="http://hp.com/go/jetadvantageondemand">hp.com/go/jetadvantageondemand</a> HP LaserJet Fonts, Barcodes, and IPDS Emulation available at <a href="http://hp.com/go/laserjetfonts">hp.com/go/laserjetfonts</a> To learn more about available infrastructure, management, and workflow solutions, visit <a href="http://hp.com/go/printingsolutions">hp.com/go/printingsolutions</a></p>	

# Appendix A: Control panel features

## Upgrade to a modern interface

The HP PageWide Enterprise Color MFP 780, 785 series is powered by HP FutureSmart 4.0 firmware. Its modern, tablet-like interface keeps things simple and intuitive across your fleet of Enterprise devices. A scalable control panel interface improves future extensibility and allows for customisation, along with a robust set of new apps and usability features. You can even customise with your own wallpaper image and company logo. The new Message Center, with more detailed information and helpful animations, makes it easy to address device events. The simplified home screen displays just four core apps by default (three apps for products without fax). Additional apps are easily accessed by swiping right to left, like with a smartphone or tablet.

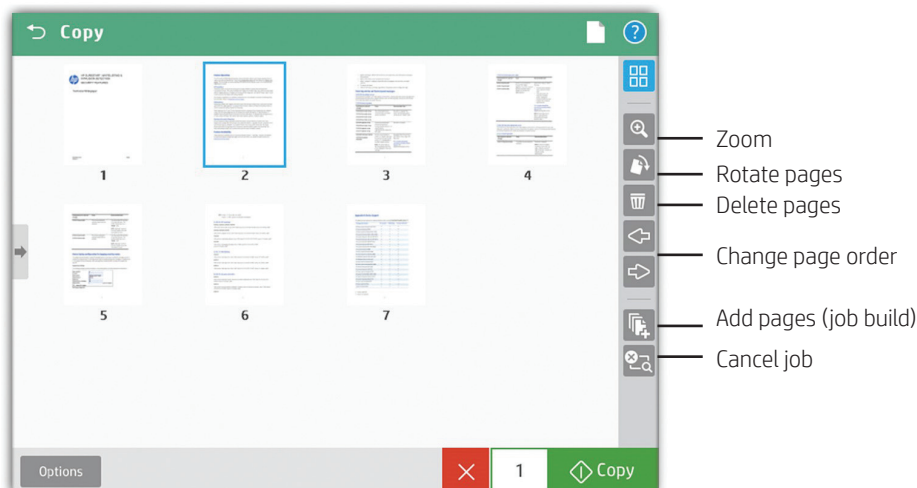


## Edit jobs right at the MFP

The control panel features an enhanced image preview—now for both copies and scans. Right from the device's 20.3 cm colour touchscreen control panel, you can easily preview and edit scans before sending them. You can apply changes (like rotating) to a single page, or to multiple pages at once. Batch separation allows users to create separate PDF or PDF/A files from scanned pages. The Flow MFP 785f and 785zs models can also create PDF OCR and PDF/A OCR files.



The new user interface enables **swipe**, **rotate**, and **drag-and-drop** capabilities



You can start a **preview** prior to committing to the copy job

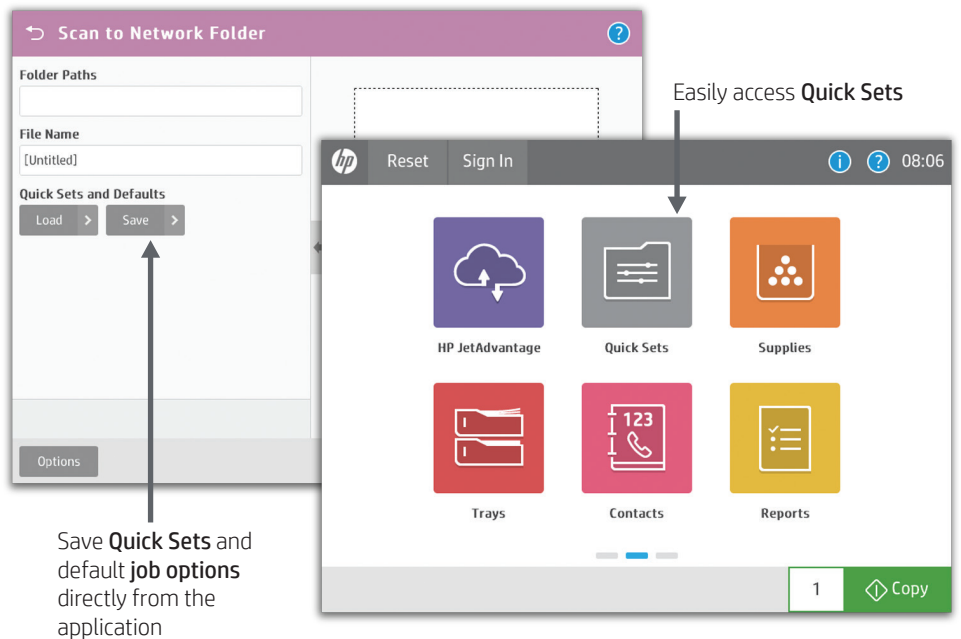


## Use Quick Sets to launch automated workflows

The MFP's digital sending capability allows users to route documents to a variety of destinations like email recipients, network folders, fax, FTP, a USB device, or Microsoft SharePoint.

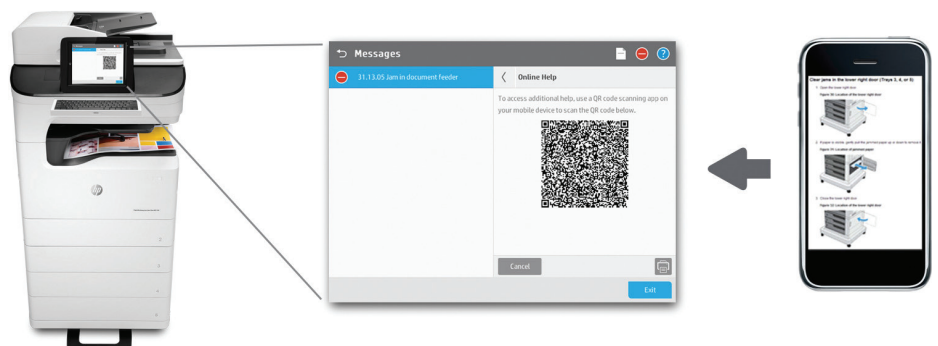
Quick Sets automate all of the steps of a complicated workflow and provide easy access to the configurations you use most, such as page size, resolution, and file format. You can also specify security settings, such as encrypted PDFs to be delivered through encrypted and signed emails.

Help users find what they need by moving individual Quick Sets to any screen or folder using the home screen customisation feature. With Quick Sets, IT can promote or block access to certain device features. Calls to the helpdesk can be reduced when users have everything they need and are restricted from accessing settings they shouldn't tamper with.



## Troubleshoot with ease

The HP PageWide Enterprise Color MFP 780, 785 series can help save your IT department valuable time when it comes to troubleshooting problems. The Remote Control Panel allows users to operate the user interface remotely, so IT can troubleshoot problems without running to the MFP.<sup>58</sup> Users can also quickly troubleshoot technical issues with HP's innovative, cloud-based Online Help services that are relevant and up to date. Easily solve problems from your PC or mobile device. A Quick Response (QR) code on the touchscreen links to Online Help using smart phones and tablets.<sup>59</sup> You can also find these links in the HP Embedded Web Server event log.





- <sup>1</sup> Based on HP review of 2018 published security features of competitive in-class printers. Only HP offers a combination of security features that can monitor to detect and automatically stop an attack then self-validate software integrity in a reboot. For a list of printers, visit: [hp.com/go/PrintersThatProtect](http://hp.com/go/PrintersThatProtect). For more information, visit [hp.com/go/printersecurityclaims](http://hp.com/go/printersecurityclaims).
- <sup>2</sup> Energy claim based on TEC data reported on [energystar.gov](http://energystar.gov) as of February 2018. Data normalised to determine energy efficiency of in-class A3 colour laser printers and MFPs with published speeds of 20 to 80 ppm, excluding other HP PageWide products. Subject to device settings. Actual results may vary.
- <sup>3</sup> High-yield cartridges are not included in printer purchase; purchase separately. Learn more at [hp.com/go/learnaboutsupplies](http://hp.com/go/learnaboutsupplies).
- <sup>4</sup> Comparison based on printing in Professional Mode.
- <sup>5</sup> Fewer service parts claim based on HP analysis of leading in-class A3 colour laser printers and MFPs as of February 2018; calculations use publicly available and/or published manufacturer rated yields for long-life consumables and assume 600,000 pages printed (using a 60% black/40% colour ratio). Learn more at [hp.com/go/pagewideclaims](http://hp.com/go/pagewideclaims).
- <sup>6</sup> Programme availability varies. For more information, visit [hp.com/recycle](http://hp.com/recycle).
- <sup>7</sup> Comparison of HP PageWide A3 devices with the majority of in-class colour ink/laser MFPs (\$3,000-\$10,299 and €2,820-€10,199), and colour ink/laser single function printers (\$1,500-\$4,299 and €1,410-€4,099) as of April 2018, excluding other HP PageWide products; competitive set based on market share data as reported by IDC as of Q4 2017, MSRP data provided by gap intelligence and/or Buyers Lab. HP PageWide speeds based on General Office mode and exclude first page. Learn more at [hp.com/go/printerspeeds](http://hp.com/go/printerspeeds).
- <sup>8</sup> The HP PageWide Enterprise Color MFP 780 series prints up to 45/65 ppm, A4 and letter, simplex (Professional mode/General Office mode). The HP PageWide Enterprise Color Flow MFP 785 series prints up to 55/75 ppm, A4 and letter, simplex (Professional mode/General Office mode). ISO speeds measured using ISO/IEC 24734. Excludes first page or first set of ISO test pages. For details see [hp.com/go/printerclaims](http://hp.com/go/printerclaims).
- <sup>9</sup> Scan speed measured from ADF at default 300 dpi (black-and-white, greyscale, and colour). Actual processing speeds may vary depending on scan resolution, network conditions, computer performance, and application software.
- <sup>10</sup> Bluetooth® Low Energy is standard only on the HP PageWide Enterprise Color Flow MFP 785zs and Flow MFP 785z+ models, and it cannot be added to other models.
- <sup>11</sup> Wi-Fi Direct printing is embedded in the HP PageWide Enterprise Color Flow MFP 785zs and Flow MFP 785z+ models. All other models can add wireless direct by purchasing the optional HP Jetdirect 3000w NFC/Wireless Direct Accessory. Mobile device needs to be connected directly to the signal of a Wi-Fi Direct® supported MFP or printer prior to printing. Depending on mobile device, an app or driver may also be required. For details, see [hp.com/go/mobileprinting](http://hp.com/go/mobileprinting). Wi-Fi Direct is a registered trademark of Wi-Fi Alliance®.
- <sup>12</sup> Fax capability is optional on the HP PageWide Enterprise Color MFP M780 series; it is included on the Flow MFP 785 series models.
- <sup>13</sup> An administrator must enable the easy-access USB port before use.
- <sup>14</sup> Requires an Internet connection to the printer. Services may require registration. App availability varies by country, language, and agreements. For details, see [hpconnected.com](http://hpconnected.com).
- <sup>15</sup> Standard and optional paper-handling accessories vary by model. See Series at a glance table, page 7, for details.
- <sup>16</sup> The 3,250-sheet external finisher with stapler (Z4L04A) is required for the HP PageWide Enterprise Color Flow MFP 785z+ model and must be purchased separately. It can staple up to 50 pages. The lower bin supports output of up to 3,000 sheets and the upper bin supports output of up to 250 sheets. The external finisher is not supported on any other HP PageWide Enterprise Color MFP 780 or 785 series model.
- <sup>17</sup> Some features require additional purchase. A FutureSmart service pack update may be required to activate security features. Learn more at [hp.com/go/printsecurity](http://hp.com/go/printsecurity).
- <sup>18</sup> Solutions deployed through the Hardware Integration Pocket (HIP) may require additional purchase. HP Proximity Card Reader (CZ208A) is available for separate purchase for select HP devices with HIP and touchscreen display.
- <sup>19</sup> Use of the HP Trusted Platform Module accessory may require a firmware upgrade.
- <sup>20</sup> HP Web Jetadmin is available for download at no additional charge at [hp.com/go/wja](http://hp.com/go/wja).
- <sup>21</sup> HP JetAdvantage Security Manager must be purchased separately. For details, see [hp.com/go/securitymanager](http://hp.com/go/securitymanager).
- <sup>22</sup> HP JetAdvantage Secure Print works with any network-connected printer or MFP. On-device authentication is available for many HP LaserJet, PageWide, and OfficeJet Pro devices and selected non-HP devices. Some devices may require a firmware upgrade. Internet connection required for cloud storage and retrieval of print jobs. Print-job release from a mobile device requires a network connection and QR code. For more information and a list of supported printers and MFPs, see [hp.com/go/JetAdvantageSecurePrint](http://hp.com/go/JetAdvantageSecurePrint).
- <sup>23</sup> Colour access control capabilities vary from device to device.
- <sup>24</sup> The HP Universal Print Driver is available for download at no additional charge at [hp.com/go/upd](http://hp.com/go/upd).
- <sup>25</sup> The 200-sheet ADF can scan documents up to 297 x 432 mm, as well as up to 297 x 1000 mm when "long scan size" is selected.
- <sup>26</sup> The HP PageWide Enterprise Color MFP 780 series has a recommended monthly scan volume (RMSV) of 2,000 to 50,000 pages. The HP PageWide Enterprise Color Flow MFP 785 series has an RMSV of 2,000 to 75,000 pages. HP recommends that the number of scanned pages per month be within the stated range for optimum device performance, based on factors including supplies replacement intervals and device life over an extended warranty period.
- <sup>27</sup> The pull-out keyboard and HP EveryPage are only available on the HP PageWide Enterprise Color Flow MFP 785f, 785zs, and 785z+ models.
- <sup>28</sup> Wireless performance is dependent on physical environment and distance from access point. Wireless operations are compatible with 2.4 GHz routers only.
- <sup>29</sup> The HP PageWide Enterprise Color MFP 780 series and Flow MFP 785f models can add wireless networking with the purchase of the optional HP Jetdirect 2900nw Print Server. Wireless performance is dependent on physical environment and distance from access point and may be limited during active VPN connections.
- <sup>30</sup> The 350-sheet inner finisher is supported on the HP PageWide Enterprise Color MFP 780dns and Flow MFP 785zs models only. Those models have a maximum output capacity of 850 sheets. The MFP 780dn and Flow MFP 785f models have a maximum output capacity of 500 sheets. The Flow MFP 785z+ has a maximum output capacity of 3,250 sheets with the required external finisher.
- <sup>31</sup> Purchase of optional paper tray required to reach maximum input capacity.
- <sup>32</sup> Recommended Monthly Page Volume: HP recommends that the number of printed pages per month be within the stated range for optimum device performance, based on factors including supplies replacement intervals and device life over an extended warranty period.
- <sup>33</sup> Measured using ISO/IEC 17629. Exact speed for first page out varies depending on the system configuration, software application, driver, and document complexity. Learn more at [hp.com/go/printerclaims](http://hp.com/go/printerclaims).
- <sup>34</sup> Measured after 15 minutes in sleep. Exact speed varies depending on the system configuration, software application, driver, document complexity, and time in sleep.
- <sup>35</sup> Scan software not included in box. HP Scan and TWAIN driver available for download: [hp.com/support](http://hp.com/support).
- <sup>36</sup> An administrator must enable the Scan to SharePoint feature before use.
- <sup>37</sup> First Copy Out and Copy Speed measured using ISO/IEC 29183, excludes first set of test documents. For more information see [hp.com/go/printerclaims](http://hp.com/go/printerclaims). Exact speed varies depending on the system configuration, software application, driver, and document complexity.
- <sup>38</sup> Based on standard ITU-T test image #1 at standard resolution and MMR encoding, the HP fax device can transmit at 3 sec/page for V.34 and 6 sec/page for V.17.
- <sup>39</sup> Future firmware updates may support 4608 MB by adding DIMM memory module.
- <sup>40</sup> Future firmware updates may support 6656 MB by adding DIMM memory module.
- <sup>41</sup> Duty cycle is defined as the maximum number of pages per month of imaged output. HP recommends that the number of printed pages per month be within the stated range for optimum device performance, based on factors including supplies replacement intervals and device life over an extended warranty period.
- <sup>42</sup> Printer requires ePrint account registration. App or software may be required. Wireless operations are compatible with 2.4 GHz operations only. Learn more at [hp.com/go/mobileprinting](http://hp.com/go/mobileprinting).
- <sup>43</sup> Supports the following devices running iOS 4.2 or later: iPad®, iPad 2, iPhone® (3GS or later), iPod touch® (3rd generation or later). Works with HP's AirPrint®-enabled printers and requires the printer be connected to the same network as your iOS device. Wireless performance is dependent on physical environment and distance from the access point.
- <sup>44</sup> Touch-to-print capability is optional for all models (except the Flow 785zs and 785z+) with the purchase of the optional HP Jetdirect 3000w NFC/Wireless Direct Accessory. Mobile device must support Near Field Communication (NFC)-enabled printing. For more information, see [hp.com/go/businessmobileprinting](http://hp.com/go/businessmobileprinting).
- <sup>45</sup> Full solution software available only for Windows® 7 and newer, UPD software available only for Windows 7 and newer, HP Software for Mac and Windows is no longer included on the CD, but can be downloaded from [123.hp.com](http://123.hp.com). Legacy Windows Operating Systems (XP, Vista, and equivalent servers) get print and scan drivers only with a reduced feature set. Windows RT OS for Tablets (32- and 64-bit) uses a simplified HP print driver built into the RT OS.
- <sup>46</sup> Maximum dimensions of the device are measured with all paper trays folded out and standard accessories installed.
- <sup>47</sup> Average black declared yields based on ISO/IEC 19752 and continuous printing. Average colour composite (C/M/Y) declared yields based on ISO/IEC 19798 and continuous printing. Actual yields and costs vary considerably depending on images printed, number of colour pages printed, and other factors. For details, see [hp.com/go/learnaboutsupplies](http://hp.com/go/learnaboutsupplies).

- 
- <sup>48</sup> If stored below the lowest specified operating temperature, unit must slowly warm up to an approved operating temperature (HP recommends waiting 24 hours at approved operating temperature prior to using the printer).
- <sup>49</sup> Printing mono simplex A4 at 46 ppm (780 series) and 56 ppm (785 series). Acoustic values are subject to change. For current information, see [hp.com/support](http://hp.com/support).
- <sup>50</sup> Scanning at 114 ppm with ADF running.
- <sup>51</sup> Scanning at 126 ppm with ADF running.
- <sup>52</sup> Scanning at 129 ppm with ADF running.
- <sup>53</sup> Scanning at 128 ppm with ADF running.
- <sup>54</sup> Power requirements are based on the country/region where the printer is sold. Do not convert operating voltages. This will damage the printer and void the product warranty. Power consumption values typically based on measurement of 115V device.
- <sup>55</sup> HP Auto-On/Auto-Off Technology capabilities are subject to printer and settings.
- <sup>56</sup> EPEAT® registered where applicable. EPEAT registration varies by country. See [epeat.net](http://epeat.net) for registration status by country.
- <sup>57</sup> Service levels and response times may vary depending on your geographic location. Service starts on date of hardware purchase. Restrictions and limitations apply. For details, visit [hp.com/go/cpc](http://hp.com/go/cpc).
- <sup>58</sup> Availability dependent on firmware or software updates or upgrades.
- <sup>59</sup> Online Help must be enabled on the printer or MFP. Mobile device must have an Internet connection to access online services.

Sign up for updates  
[hp.com/go/getupdated](http://hp.com/go/getupdated)



---

© Copyright 2017-2019 HP Development Company, L.P. The information contained herein is subject to change without notice. The only warranties for HP products and services are set forth in the express warranty statements accompanying such products and services. Nothing herein should be construed as constituting an additional warranty. HP shall not be liable for technical or editorial errors or omissions contained herein.

Apple, AirPrint, iPad, iPhone, and iPod touch are trademarks of Apple Inc. Bluetooth is a trademark owned by its proprietor and used by HP Inc. under license. ENERGY STAR is a registered trademark owned by the U.S. Environmental Protection Agency. Android and Google Cloud Print are trademarks of Google Inc. Microsoft, SharePoint, Office 365, Windows, Windows Vista, and Windows Server are U.S. registered trademarks of the Microsoft group of companies. UNIX is a registered trademark of The Open Group.

