



Humanetics Innovative Solutions, Inc.

Hybrid-III 3 Year-Old Child Dummy

210-0000-H

FMVSS 208, 213, 49CFR Part 572, Subpart P



Brand Harmonized Parts Catalog





For information on Humanetics products, please visit our web site at www.humaneticsatd.com

or contact:

Humanetics Innovative Solutions

23300 Haggerty Road

Farmington Hills, Michigan

48335 USA

Tel: +1 248 778 2000

Fax: +1 248 778 2001

No part of this publication may be reproduced, stored in a retrieval system or transmitted in any form or by any means, electronic, photocopying, recording, mechanical or otherwise, without the express written consent of Humanetics Innovative Solutions.

Copyright © 2015 Humanetics Innovative Solutions, All rights reserved.

The information in this catalog is furnished for informational use only, and is subject to change without notice. Humanetics Innovative Solutions assumes no responsibility or liability for any errors or inaccuracies that may appear in this catalog.

Table of Contents

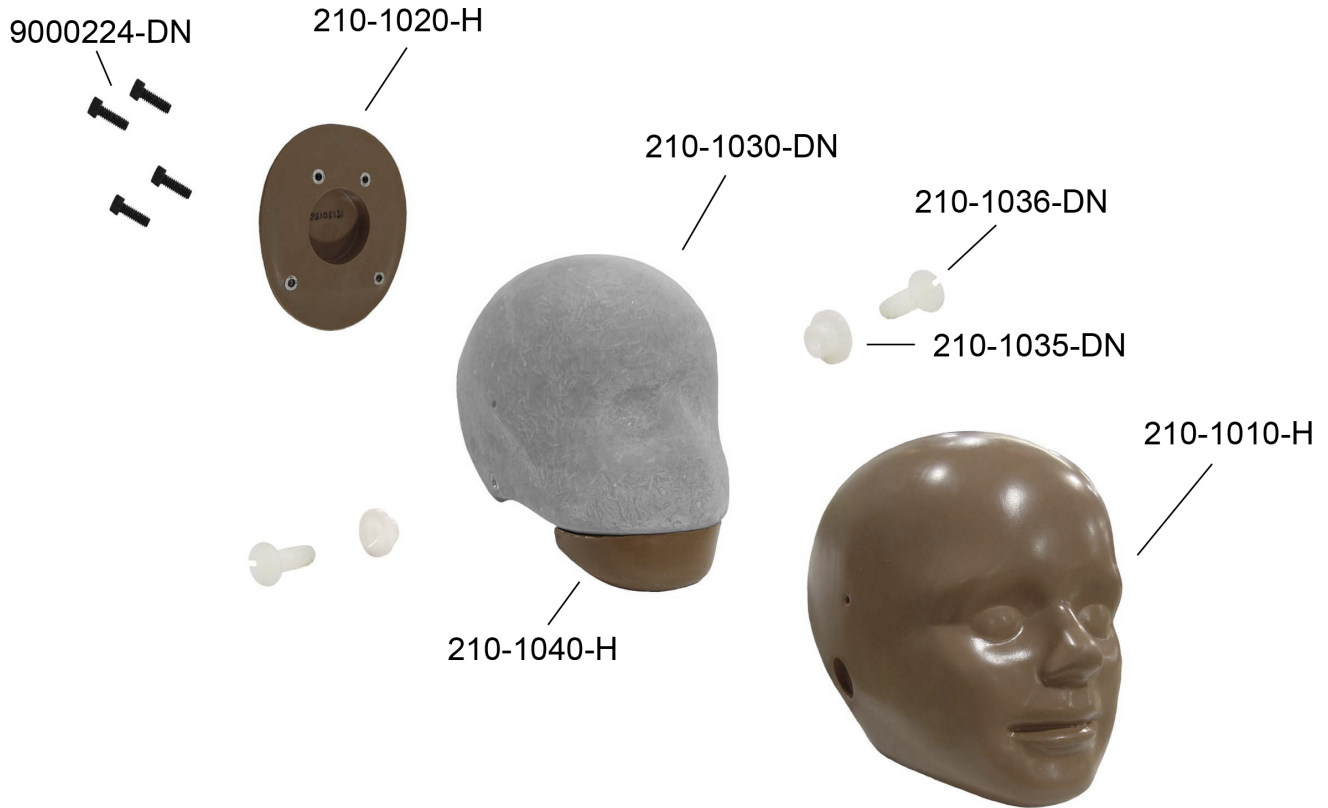
Head Assembly	4
Neck Assembly	5
Torso Assembly	6-11
Arm Assembly Left / Right	12
Leg Assembly Left / Right	13-14
Accelerometer Mount Matrix	15
Clothes / Misc	15

Background

The Hybrid III 3 Year Old Child Crash Test Dummy is developed in cooperation with the SAE Biomechanics Committees and the National Highway Transport Safety Administration (NHTSA). Originally developed in 1992, the dummy went through a complete upgrade in 1997 to enable the dummy to evaluate airbag aggressiveness when a child is close to a deploying airbag. The "Out Of Position" (OOP) test procedures require the dummy to accurately measure neck loading, chest compression and the Viscous Criterion while being durable and repeatable in these severe test conditions.

The dummy can be positioned standing or sitting and can evaluate the safety performance of many types of child restraint systems. The Hybrid III 3 Year Old dummy is dynamically tested and proven to the latest test conditions. The anthropometry of the dummy is derived from University of Michigan Transport Research Institute (UMTRI) studies* and scaled data from the current Hybrid III 50th dummy.

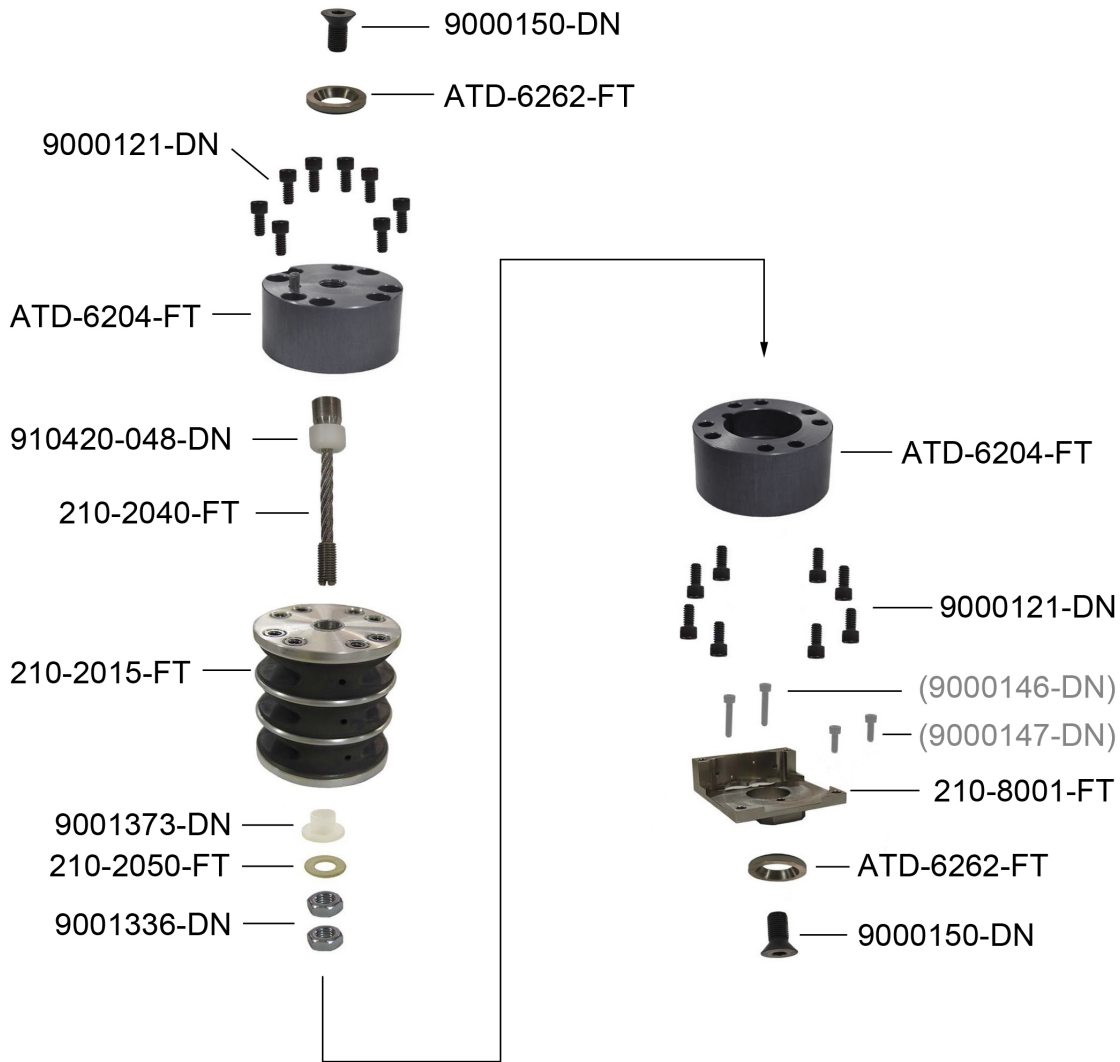
Head Assembly – Harmonized



Part Number	Description	Qty. Req'd Per Dummy
210-1000-H	Head Assembly, Complete, Tested/Certified*	1
210-1010-H	Head Skin, HIII 3YR	1
210-1020-H	Cap Skin, HIII 3YR	1
210-1030-DN	Skull, Molded, HIII 3YR	1
210-1040-H	Chin Insert	1
9000224-DN	Screw, SHCS 10-24 X 5/8	1
210-1035-DN	Bushing, Condyle	1
210-1036-DN	Screw, Nylon FHSL 1/4-20 X 3/4	1

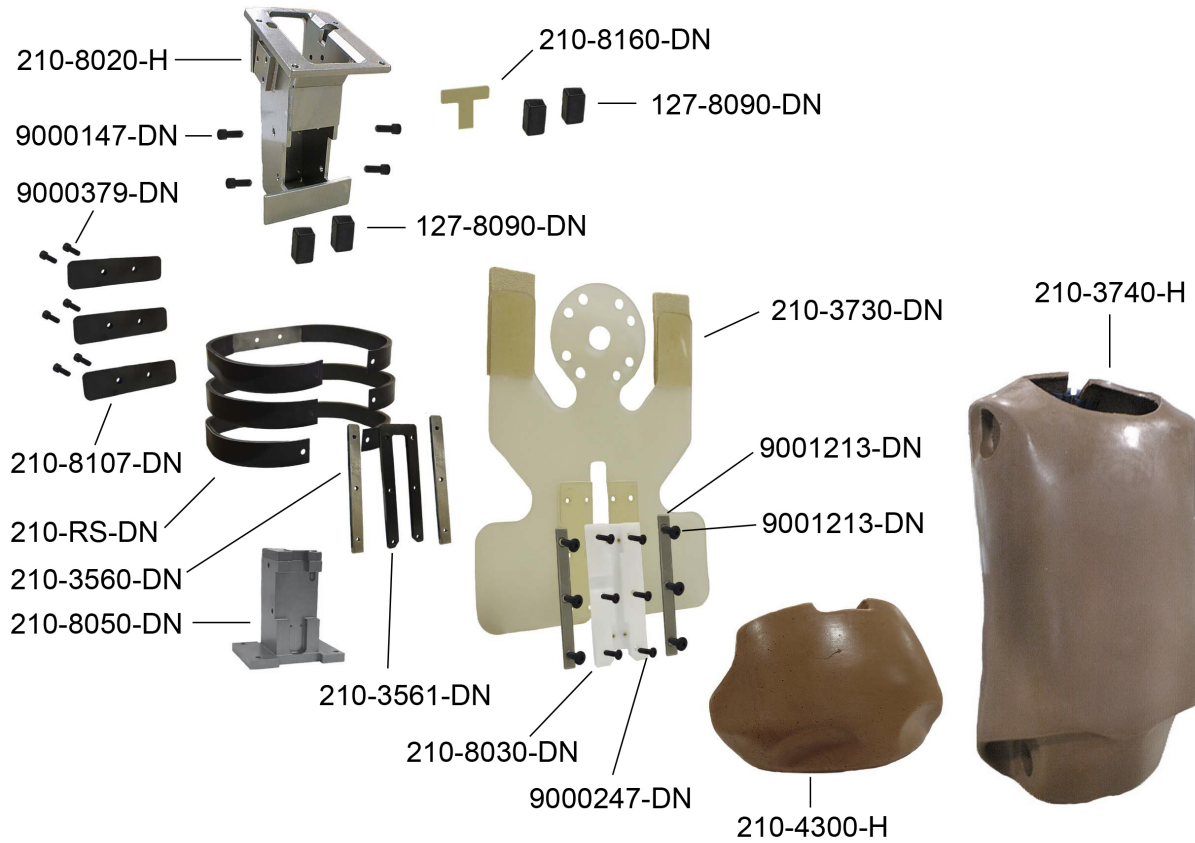
*The Complete Head Assembly is supplied with an accelerometer mount kit free of charge. Please specify the type required when placing order.

Neck Assembly – Harmonized



Part Number	Description	Qty. Req'd Per Dummy
210-2001-H	Neck Assembly, H3 3YO	1
210-2015-FT	Neck Assembly, Molded, T/C	1
210-2040-FT	Cable, Neck	1
210-2050-FT	Washer, Urethane	1
9000121-DN	Screw, SHCS 1/4-20 X 1/2	16
9000150-DN	Screw, FHCS 1/2-20 X 1	2
9001336-DN	Nut, Hex Jam 5/16-24	2
9001373-DN	Bushing Nylon Shoulder for 5/16 x 1/4 Screw	1
910420-048-DN	Mounting Plate Insert	1
ATD-6204-FT	Structural Replacement, Neck LC, 3AB	2
ATD-6262-FT	3YO (Special) Head Mount Washer	1
TE-208-050	Bib Simulator, H3 CRABI	1
210-8001-FT	Load Cell Adaptor, Neck	1

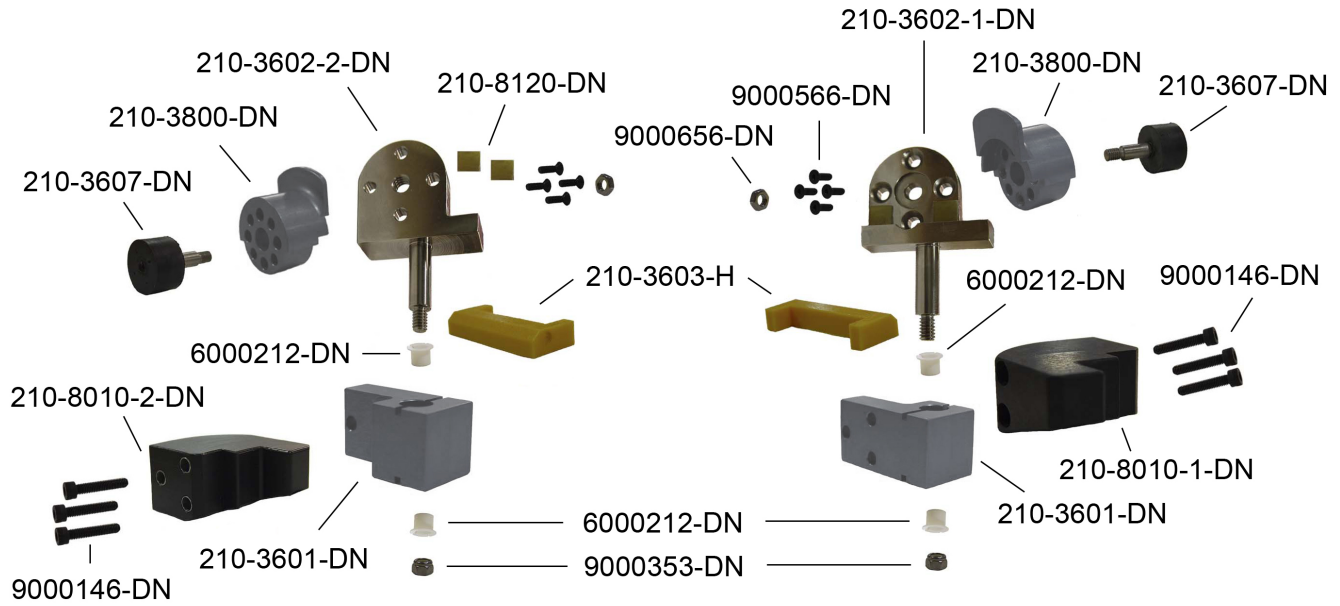
Torso Assembly – Harmonized



Part Number	Description	Qty. Req'd Per Dummy
210-3000-H	Upper/ Lower Torso Assembly, H3-3YO	1
210-8020-H	Spine Box Machined/Weldment	1
210-8160-DN	Front Urethane Pad, Spine	1
127-8090-DN	Stop Sternum	4
9000147-DN	Screw, SHCS 10-32 X 1/2	4
9000379-DN	Screw, SHCS 6-32 X 3/8	6
210-8107-DN	Rib Support, Rear, HIII 3YR	3
210-RS-DN	Rib Set Complete, Tested, HIII 3YR	1
210-8108-DN	Rib Assembly, Rib #1	1
210-8109-DN	Rib Assembly, Rib #2	1
210-8110-DN	Rib Assembly, Rib #3	2
210-3560-DN	Strip, Threaded, Front Rib End	2
210-8050-DN	Thoracic Insert	1
210-3561-DN	Strip, Threaded, Sternum	1
210-3730-DN	Bib Assembly, HIII 3YR	1
210-3550-DN	Plate, Front Rib End Stiffener	2
9001213-DN	Screw, BHCS 6-32 X 3/8	6
210-8030-DN	Slider, Chest Deflection Transducer	1
9000247-DN	Screw, BHCS 6-32 X 1/2	6
210-4300-H	Abdominal Insert Molded	1
210-3740-H	Torso Flesh and Skin Assembly	1

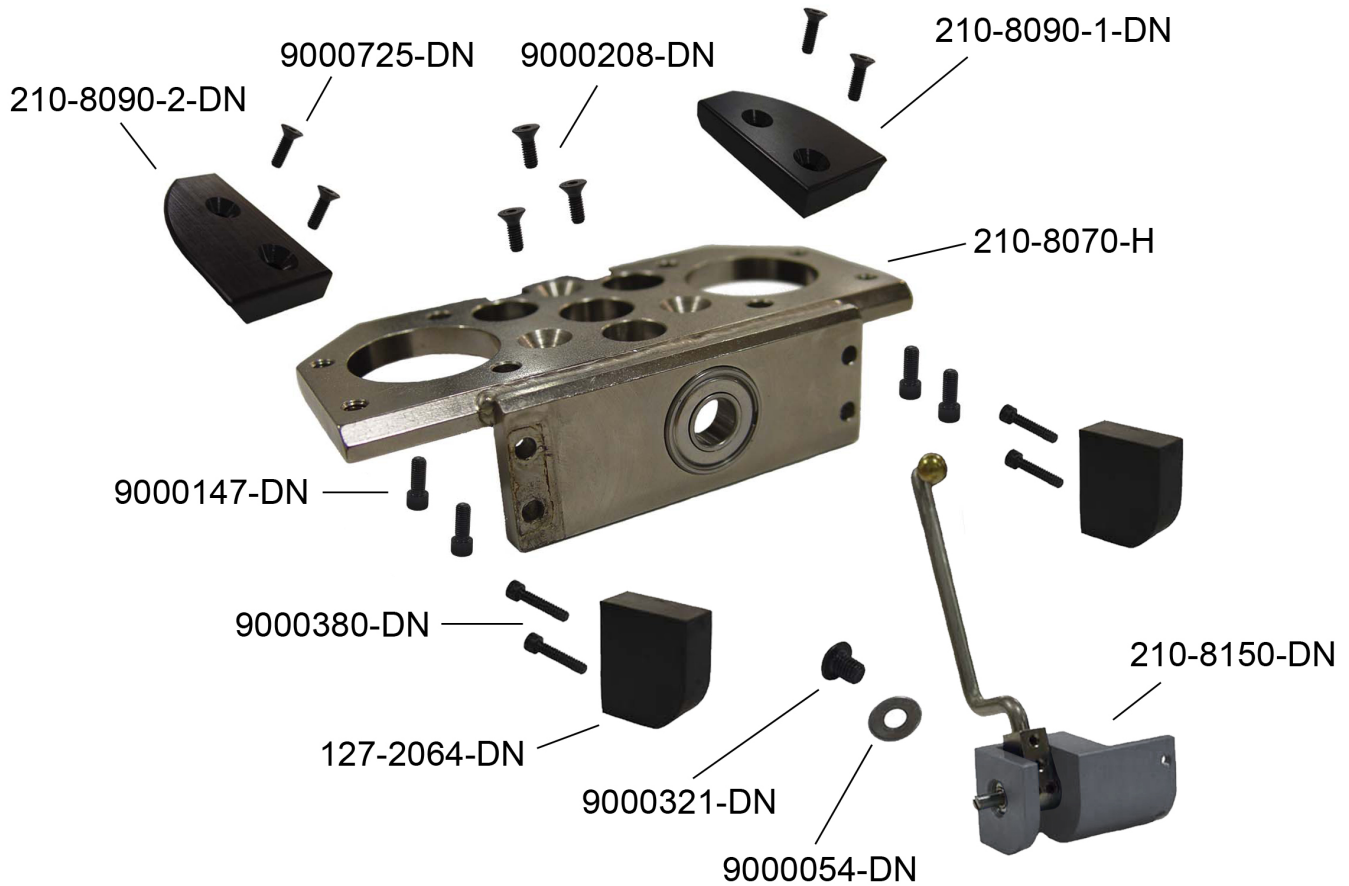
*The Complete Upper Torso Assembly is supplied with an accelerometer mount kit free of charge.

Torso Assembly – Harmonized (Con’t)



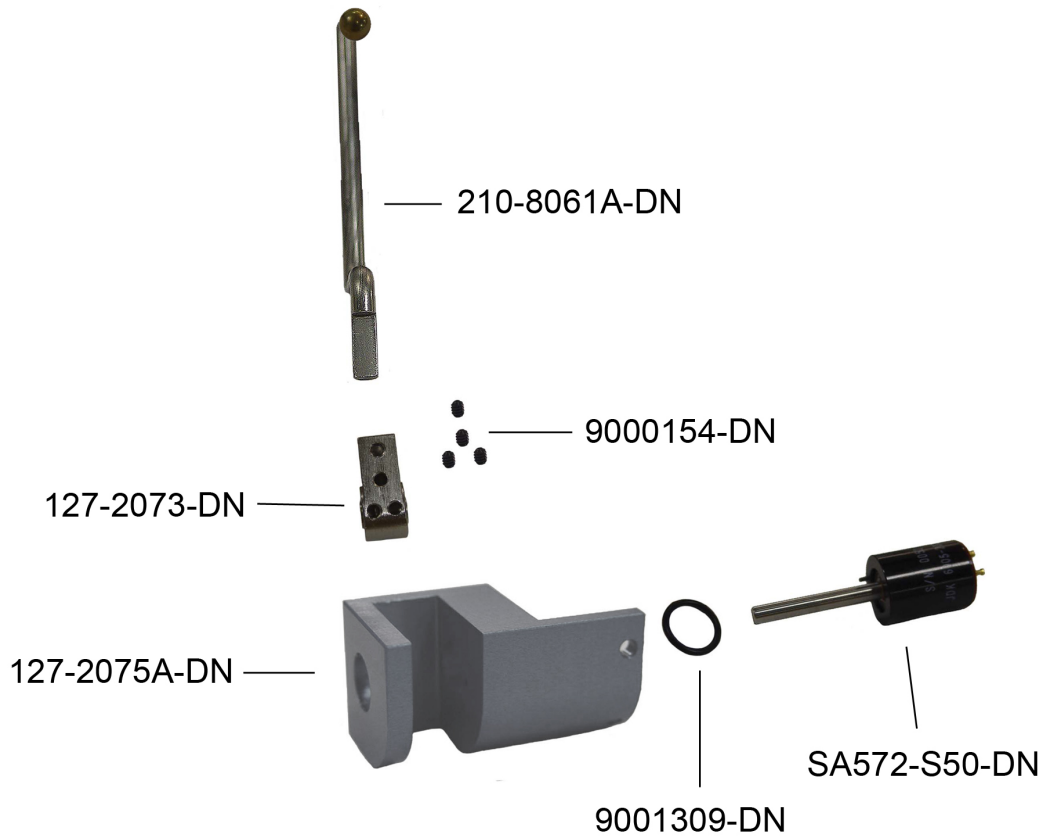
Part Number	Description	Qty. Req'd Per Dummy
210-3000-H	Upper/ Lower Torso Assembly, H3-3YO (Con't)	1
210-3602-2-DN	Bracket, Shoulder Support, Right	1
210-3602-1-DN	Bracket, Shoulder Support, Left	1
210-8120-DN	Shoulder Stop	4
9000566-DN	Screw, FHCS 10-24 X 5/8	8
9000656-DN	Nut, Hex Jam 5/16-18	2
210-3800-DN	Shoulder Load Cell Simulator	2
210-3607-DN	Molded rubber Assy. #2, Shoulder	2
210-3603-H	Clavicle Spring Stop H3-3YR	2
6000212-DN	Bearing, Nyliner	4
9000146-DN	Screw, SHCS 10-32 X 1	6
210-8010-1-DN	Upper Rib Stop Assembly, Left	1
210-8010-2-DN	Upper Rib Stop Assembly, Right	1
210-3601-DN	Housing, Shoulder Support	2
9000353-DN	Nut, Locknut 1/4-20	2

Torso Assembly – Harmonized (Con’t)



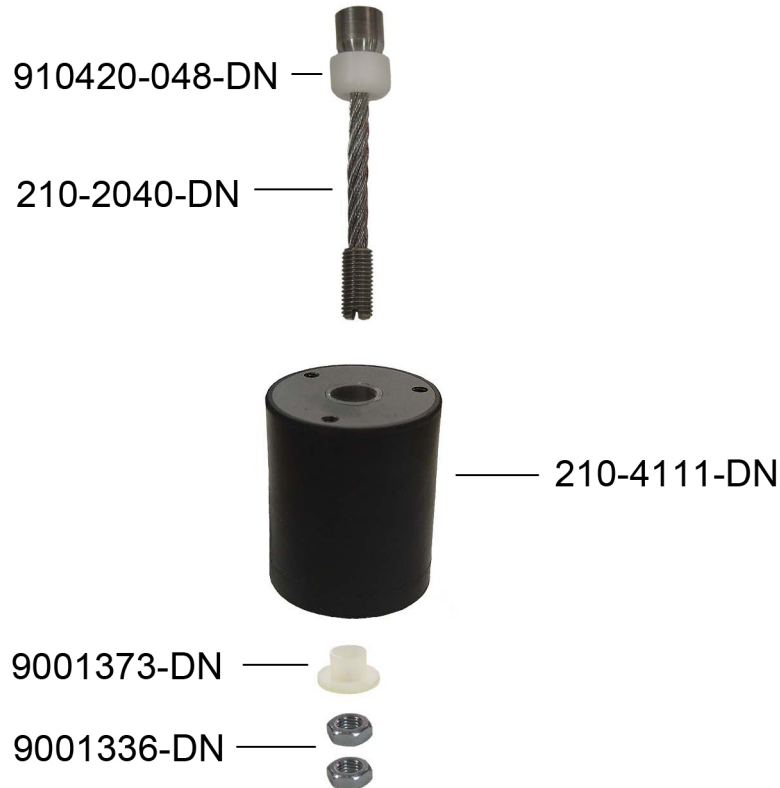
Part Number	Description	Qty. Req'd Per Dummy
210-3000-H	Upper/ Lower Torso Assembly, H3-3YO (Con't)	1
210-8090-1-DN	Lower Stop, Rib, Left	1
210-8090-2-DN	Lower Stop, Rib, Right	1
9000725-DN	Screw, FHCS 10-32 X 5/8	4
9000208-DN	Screw, FHCS 10-32 X 1/2	3
210-8070-H	Transducer Mount Weldment	1
9000147-DN	Screw, SHCS 10-32 X 1/2	4
9000380-DN	Screw, SHCS 6-32 X 5/8	4
127-2064-DN	6YR H3-Thorax Stop-Insert	2
9000321-DN	Screw, BHCS 10-32 X 1/4	1
9000054-DN	Washer, Flat #10 X .500 .049	1
210-8150-DN	Transducer Assembly	1

Torso Assembly – Harmonized (Con’t)



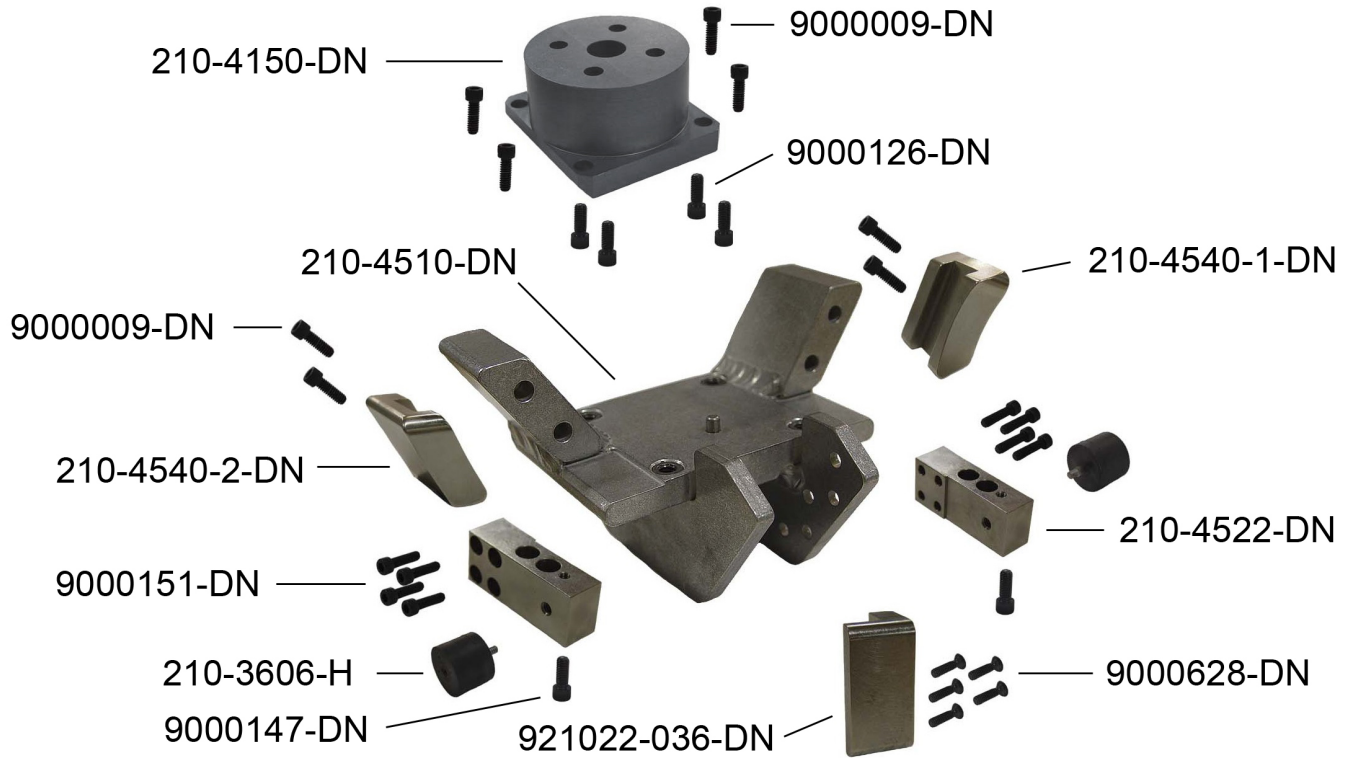
Part Number	Description	Qty. Req'd Per Dummy
210-3000-H	Upper/ Lower Torso Assembly, H3-3YO (Con't)	1
210-8150-DN	Transducer Assembly	1
210-8061A-DN	Transducer Arm Assembly	1
9000154-DN	Screw, SSCP 4-40 X 1/8	4
SA572-S50-DN	Potentiometer, Chest	1
9001309-DN	O-ring 5/8 X 1/2 X 1/16 Rubber	1
127-2075A-DN	Potentiometer Bracket Assembly	1
127-2073-DN	6 YR H3 Arm Connector	1

Torso Assembly – Harmonized (Con’t)



Part Number	Description	Qty. Req'd Per Dummy
210-3000-H	Upper/ Lower Torso Assembly, H3-3YO (Con't)	1
210-4110-DN	Lumbar Assembly	1
210-4111-DN	Lumbar Molded	1
910420-048-DN	Mounting Plate Insert	1
210-2040-DN	Cable Neck / Lumbar	1
9001373-DN	Bushing Nylon Shoulder	1
9001336-DN	Nut, Hex Jam 5/16-24	2

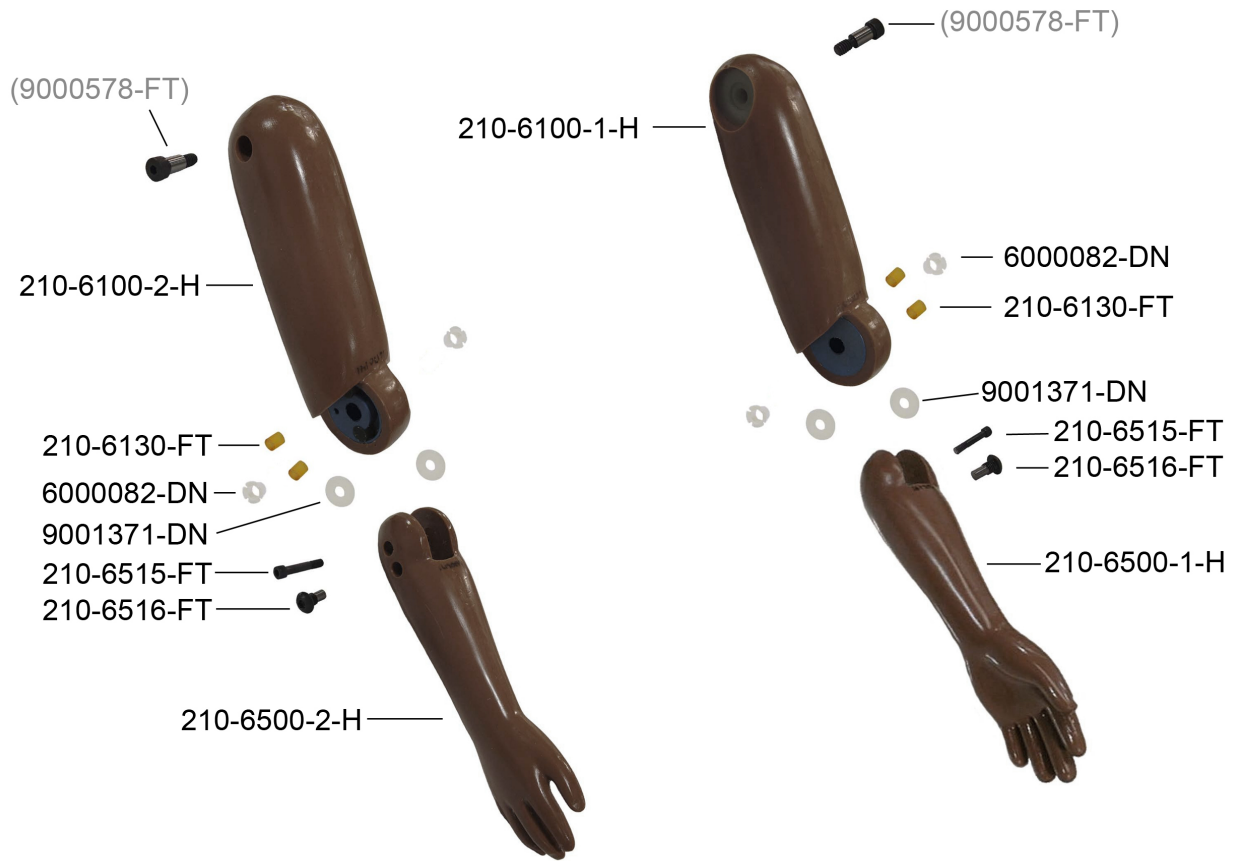
Torso Assembly – Harmonized (Con’t)



Part Number	Description	Qty. Req'd Per Dummy
210-3000-H	Upper/ Lower Torso Assembly, H3-3YO (Con't)	1
210-4150-DN	Lumbar Load Cell Structural Replacement	1
9000009-DN	Screw, SHCS 1/4-20 X 3/4	8
9000126-DN	Screw, SHCS 1/4-28 X 5/8	4
210-4540-1-DN	Load Cell Simulator, A.S.I.S. Left	1
210-4510-DN	Pelvis Bone, HIII 3YR	1
210-4540-2-DN	Load Cell Simulator, A.S.I.S. Right	1
9000151-DN	Screw, SHCS 10-32 X 3/4	8
210-3606-H	Hip Isolation Damper Assy	2
9000147-DN	Screw, SHCS 10-32 X 1/2	2
921022-036-DN	Pubic Transducer Structural Replacement	1
9000628-DN	Screw, FHCS 10-24 x 3/4	5
210-4522-DN	Load Cell Replacement (Acetabulum)	2

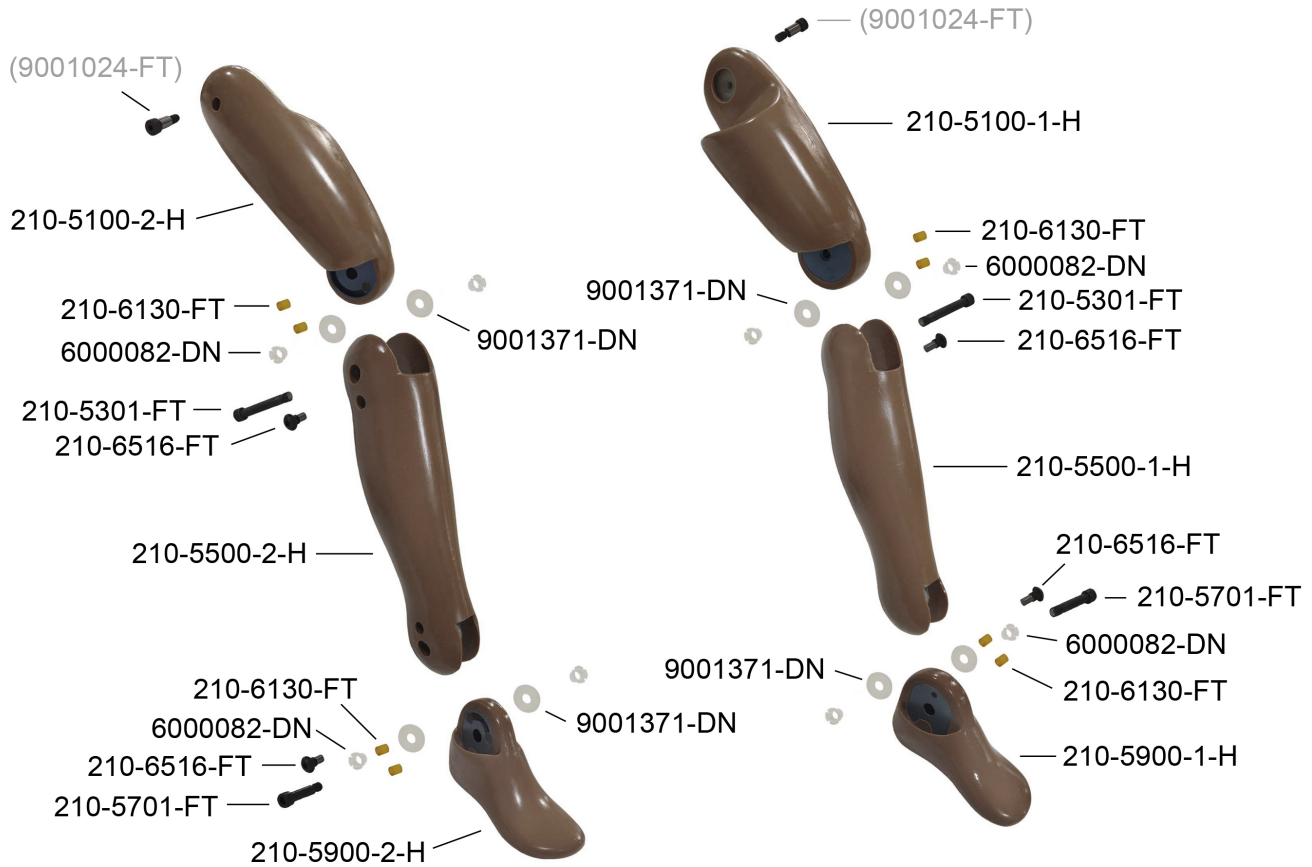
*The Complete Lower Torso Assembly is supplied with an accelerometer mount kit free of charge.

Arm Assembly Left – Harmonized



Part Number	Description	Qty. Req'd Per Dummy
210-6000-1-H	Arm Assembly H-3 YO, Left	1
210-6100-1-H	Upper Arm Molded Assy, Left	1
210-6500-1-H	Lower Arm Hand Molded Assy Left	1
6000082-DN	Bearing Nyliner	2
210-6130-FT	Stop Elbow/Knee/Ankle	2
9001371-DN	Washer, .687 OD X .260 ID X .060 THK	1
210-6515-FT	Screw, Modified Elbow	1
210-6516-FT	Stop Screw	1
210-6000-2-H	Arm Assembly H-3 YO, Right	1
210-6100-2-H	Upper Arm Molded Assy, Right	1
210-6500-2-H	Lower Arm Hand Molded Assy Right	1
6000082-DN	Bearing Nyliner	2
210-6130-FT	Stop Elbow/Knee/Ankle	2
9001371-DN	Washer, .687 OD X .260 ID X .060 THK	1
210-6515-FT	Screw, Modified Elbow	1
210-6516-FT	Stop Screw	1
(9000578-FT)	Screw SHSS 5/16 X 3/4	2

Leg Assembly Left – Harmonized



Part Number	Description	Qty. Req'd Per Dummy
210-5000-1-H	Leg Assembly, Complete, Left	1
210-5100-1-H	Upper Leg Molded Assembly, Left	1
210-6130-FT	Stop Elbow /Knee/ Ankle	4
6000082-DN	Bearing Nyliner	4
210-5301-FT	Knee Bolt	1
210-6516-FT	Stop Screw	2
9001371-DN	Washer, .687 OD X .260 ID X .060 THK	4
210-5500-1-H	Leg, Lower Assembly, Left	1
210-6516-FT	Stop Screw	1
210-5701-FT	Ankle Bolt	1
210-5900-1-H	Foot Molded / Ankle Assembly Left	1
210-5000-2-H	Leg Assembly, Complete, Right	1
210-5100-2-H	Upper Leg Molded Assembly, Left	1
210-6130-FT	Stop Elbow /Knee/ Ankle	4
6000082-DN	Bearing Nyliner	4
210-5301-FT	Knee Bolt	1

210-6516-FT	Stop Screw	2
9001371-DN	Washer, .687 OD X .260 ID X .060 THK	4
210-5500-2-H	Leg, Lower Assembly, Left	1
210-6516-FT	Stop Screw	1
210-5701-FT	Ankle Bolt	1
210-5900-2-H	Foot Molded / Ankle Assembly Left	1
(9001024-FT)	Screw SHSS 5/16 X 1/2	2

Accelerometer Mounts

Accelerometer Type	Complete Dummy (210-0000-H)	Components			
		210-1000-H	210-3000-H	210-3000-H	210-3000-H
	6-Axis	Head	T1 / T2	Thorax	Pelvis
Endevco 7264-2000	210-7264-2000-DN	ATD-6259-ASSY-DN	210-4124-DN	210-8130-DN	210-4517-DN
7264C-2000	210-7264C-2000-DN	ATD-6259-ASSY-DN	210-4124-DN	210-8130-DN	210-4517-DN
Endevco 7264A-2000	210-7264A-2000-DN	210-1024-DN	210-4124-DN	210-8130-DN	210-4517-DN
7264B-2000	210-7264B-2000-DN	210-1024-DN	210-4124-DN	210-8130-DN	210-4517-DN
Endevco 7267A	210-7267A-1500-DN	210-1024A-DN	210-4124-DN	210-8130A-DN	210-4518A-DN
Kyowa ASM-200BA	210-KYOWA-200BA-DN	210-1024-DN	210-4124-DN	210-8130-DN	210-4517-DN

Misc.

Part Number	Description	Qty. Req'd Per Dummy
210-5920-FT	Shoes	1
PADI-H3-3YO	Proc. for Assy, Disassy & Insp, H3-3YO	1