



3 Lockable Isolation 3/2 Way Valves Series MX

Ports 3/4" - 1" NPTF
Innovative modular clamping system
Manual, Solenoid Pilot,
Externally Indirect Air-Piloted Solenoid,
Air-Pilot controls

Manual isolation valves allow for depressurization of the pneumatic system so that system components may be serviced safely. The system is depressurized with the de-activation of the valve.

Electropneumatic isolation valves are ideal where manual access is difficult since they allow maximum positioning flexibility and are designed to pressurize or depressurize pneumatic systems. The built-in manual override guarantees security in case of an emergency.

The Series MX has been realized to offer a multi-sector solution that guarantees saving in terms of installation time, space and costs. A special configurator, available on Camozzi's global website at <http://catalogue.camozzi.com> (sec. Configurators), allows the customer to choose the most suitable solution for his application, selecting single components or by configuring assembled FRLs.



- » Shut-off valves with manual, solenoid or air-pilot operation
- » 8mm (0.315") OD hole for the lock-out feature accommodates most locks and hasps (manual valve version)
- » Electro-pneumatic versions available in 24 V, 110 V or 230 V
- » Quick-exhaust feature via port in base
- » Silencers available on request, 3/4" port in base of valves for silencer assembly

GENERAL DATA

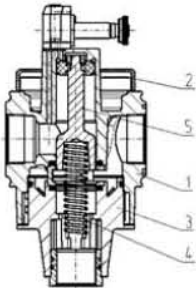
Construction	modular, compact, spool-type
Materials	see TABLE OF MATERIALS
Ports	3/4" - 1" NPTF
Weight	Manual valve = 0,75 kg (1.65 lbs) Electro-pneumatic valve (V16) = 0,8 kg (1.75 lbs) Pneumatic valve (V36) = 0,8 kg (1.75 lbs) Servo-pilot valve (V17) = 0,87 kg (1.9 lbs)
Mounting	in-line wall-mounting (by means of clamps) panel mounting, manual only
Operating temperature	-5°C - 50°C at 16 bar (with the dew point of the fluid), (23 F - 122 F @ 232 psi, up to 140 F MAX at 145 psi) 50°C - 60°C at 10 bar (with the dew point of the fluid)
Operating pressure	2 - 10 bar (in the pneumatic version - 0,8 - 10 bar) , (30 - 145 psi ; 26 in Hg - 145 psi w/ air-piloted versions)
Nominal flow	see FLOW DIAGRAMS
Nominal exhaust flow at 6 bar with $\Delta p = 1$ bar	3/4" - 1" NPTF = 9200 Nl/m, (322 SCFM)
Fluid	compressed air

**CODING EXAMPLE**

MX	3	-	3/4	-	V	01	TF
-----------	----------	----------	------------	----------	----------	-----------	-----------

MX	SERIES
3	SIZE: 3 = 3/4" - 1" NPTF
3/4	PORT: 3/4 = 3/4" 1 = 1"
V	3-WAY/2-POSITION VALVE
01	DESIGN TYPE: 01 = lockable manual control, (lock-out design) 16 = electro-pneumatic control, (solenoid pilot operated) 17 = servo-pilot control, (external air-signal pilot for solenoid with lower than 30 psi pressure supply) 36 = pneumatic control, (air-pilot operated)
TF	TF = NPTF ports blank = BSPP ports

For the assembly of a single component with fixing flanges or wall-mounting, see the section "FRL Series MX Assembled"

Lockable isolation 3/2 way valves Series MX - materials

PARTS	MATERIALS
1 = Body	Aluminium
2 = Covering	Polyamide
3 = Valve holder plug	Polyamide
4 = Lower spring	Stainless steel
5 = Spool	Stainless steel
Seals	NBR



NORTH AMERICAN FRL CATALOG > Release 8.2

3

FLOW DIAGRAM for valves Mod. MX...V01

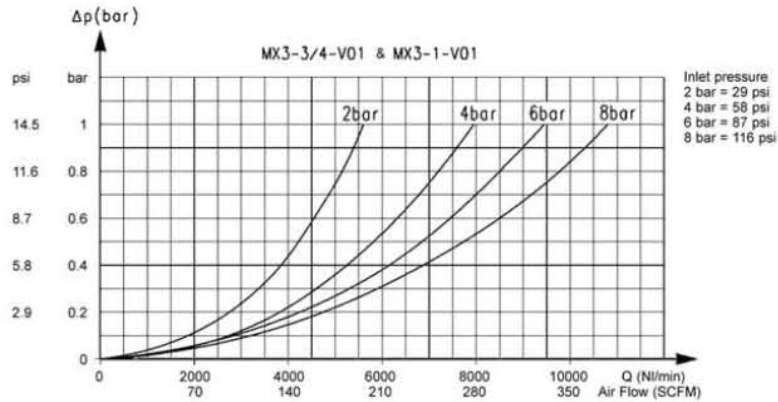
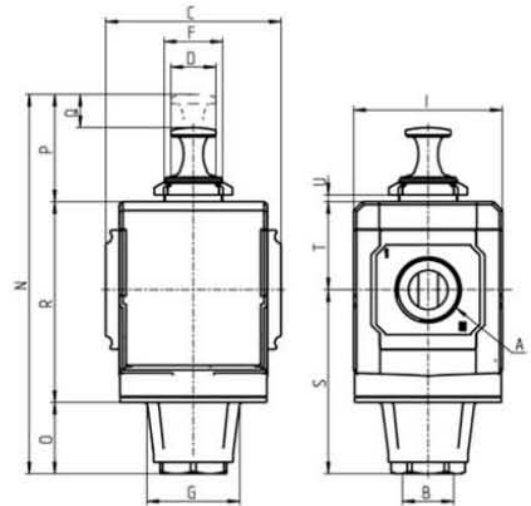


Diagram for lockable manual control valves
ΔP = Pressure drop
Q = Flow

Lockable (Lock-Out), manual valves Series MX - dimensions



DIMENSIONS (in inches)

Mod.	A	B	C	D	F	G	I	N	O	P	Q	R	S	T	U
MX-3/4-V01TF	3/4	3/4	3.524	0.906	M30x1,5	1.969	2.992	8.091	1.437	2.618	1.063	4.035	3.720	1.752	0 - 0.25
MX3-1-V01TF	1	3/4	3.524	0.906	M30x1,5	1.969	2.992	8.091	1.437	2.618	1.063	4.035	3.720	1.752	0 - 0.25

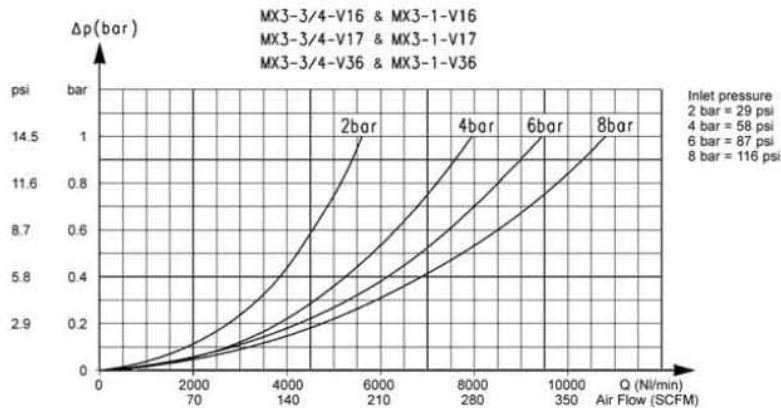
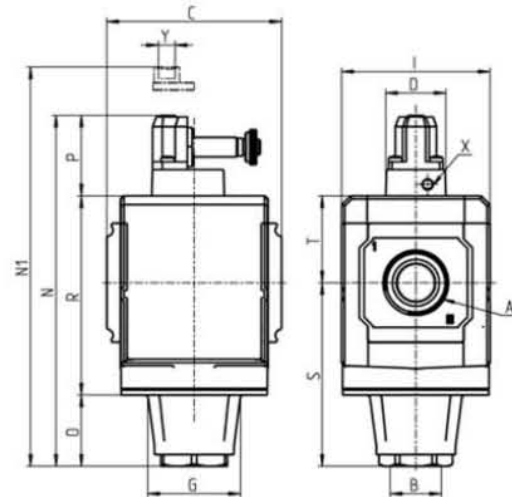

FLOW DIAGRAM for valves Mod. Mod. MX...V16 - MX...V17 - MX...V36


Diagram for electro-pneumatic, servo-pilot or pneumatic control valves
 ΔP = Pressure drop
 Q = Flow

Solenoid Pilot, Externally Piloted Solenoid or Air-Pilot valves - dimensions

DIMENSIONS (in inches)

Mod.	A	B	C	D	G	I	N	N1	O	P	R	S	T	X	Y
MX3-3/4-V16TF	3/4	3/4	3.524	1.220	1.890	2.992	7.106	-	1.457	1.634	4.016	3.720	1.752	-	-
MX3-1-V16TF	1	3/4	3.524	1.220	1.890	2.992	7.106	-	1.457	1.634	4.016	3.720	1.752	-	-
MX3-3/4-V17TF	3/4	3/4	3.524	1.220	1.890	2.992	7.106	-	1.457	1.634	4.016	3.720	1.752	M5	-
MX3-1-V17TF	1	3/4	3.524	1.220	1.890	2.992	7.106	-	1.457	1.634	4.016	3.720	1.752	M5	-
MX3-3/4-V36TF	3/4	3/4	3.524	1.220	1.890	2.992	-	6.457	1.457	1.004	4.016	3.720	1.752	-	1/8
MX3-1-V36TF	1	3/4	3.524	1.220	1.890	2.992	-	6.457	1.457	1.004	4.016	3.720	1.752	-	1/8