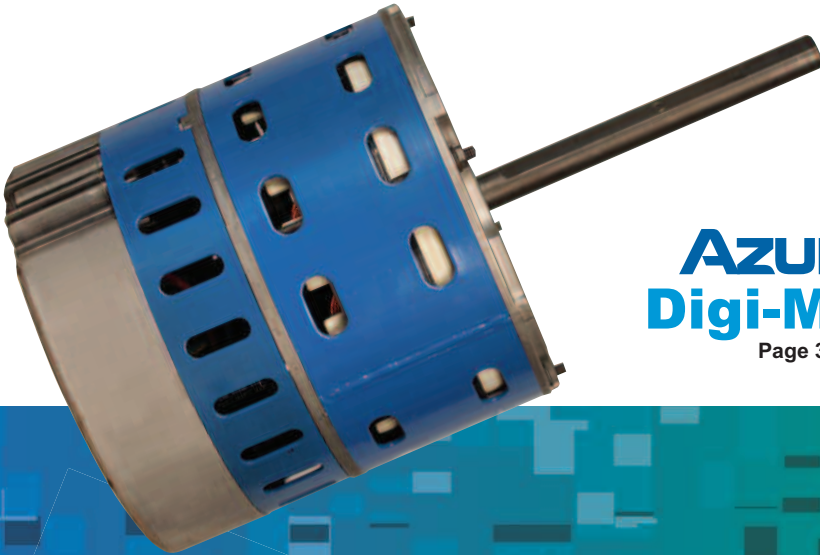




MARS Motors

Replacement
Fractional Horsepower Motors
for the HVAC/R Industry



AZURE[®]
Digi-Motor[®]

Page 3



Arrivals



Condenser Fan Shaft Up
Page 7



Torsion Flex Mount
Page 17



Commercial Refrigeration
ECM Watt Motor
Page 21



SunSlinger MAX 80°
Pages 9, 12

Table of Contents



HVAC Motors:

Azure® Digi-Motor®, Direct Drive.....	3
Azure® Digi-Motor®, Condenser Fan.....	4
*60°C Condenser Fan Motors.....	5-7
70°C Condenser Fan Motors.....	8, 10-11
*80°C Condenser Fan Motors.....	9, 12
Multi-HP 60°C Condenser Fan Motors.....	13, 15
Multi-HP 70°C Condenser Fan Motors.....	14
Direct Drive Blower Motors.....	16, 18
Multi-HP Direct Drive Blower Motors.....	16
*Torsion Flex Mount Motors.....	17
Belted Fan and Blower Motors.....	19
Draft Inducer Blower Motors.....	31
*Mounting Brackets.....	32-33

Commercial Refrigeration Motors:

Azure® Digi-Motor®, 3.3" Commercial Refrigeration.....	20
*Azure® Watt Motor.....	21
Unit Bearing Motors.....	22-23
Super-Fit™ C Frame Replacement Motors.....	24-25
3.3" Commercial Refrigeration Motors.....	26-28
21/29 Frame Commercial Refrigeration Replacement Motors.....	29
One-On-One™ Direct Replacement Motors.....	8, 30, 32
Mounting Brackets.....	32-33

Cross Reference:

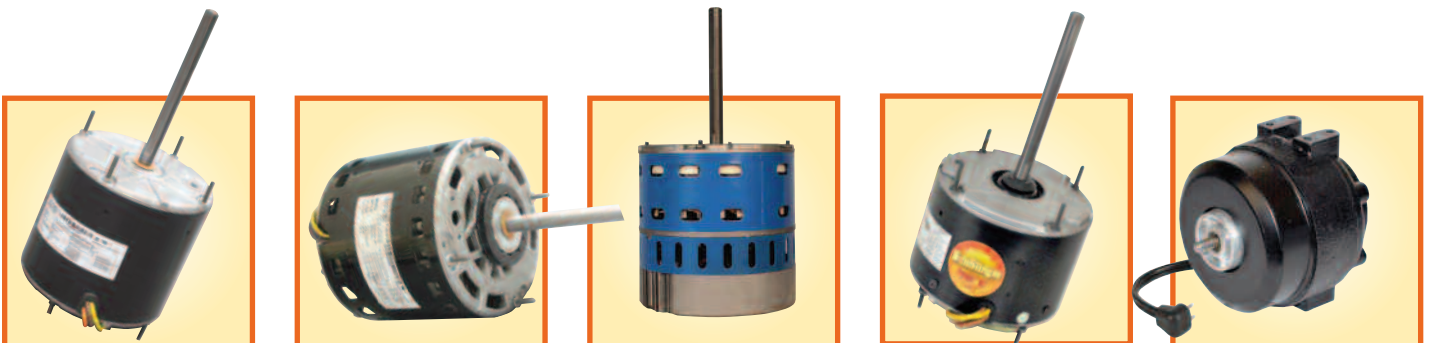
34-39

* New Product

MARS Technical Help Line

800-678-9888

M-F 8 am – 5 pm EST.



© 2016 MOTORS & ARMATURES, Inc.

All rights reserved. This catalog may not be reproduced in whole or in part in any form without written permission from Motors & Armatures, Inc. MARS is a registered trademark of Motors & Armatures, Inc. MARS part numbers are trademarks of Motors & Armatures, Inc.





AZURE[®] Digi-Motor[®] PSC and X-13 Replacement Motor in One

Two Azure[®] models replace virtually all PSC and X-13 ECM 1/5 through 1 hp direct drive motors. Azure[®] is dual voltage (115V or 230V) and CW or CCW.

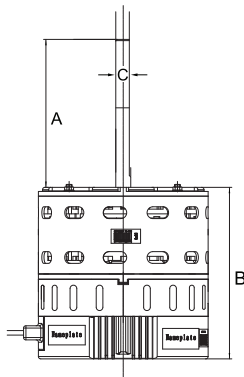
Easy to Install –

- In PSC mode, Azure[®] wires exactly like a PSC motor (no capacitor required).
- In X-13 mode, Azure[®] accepts the factory power harness and wires directly to the thermostat.

Auto-sizing learning mode –

- During initial set-up, Azure[®] measures the external static pressure of the system and programs its speed taps to the correct horsepower for each application.
- If additional customizing is required, an optional hand held programmer (MARS #08502) can be used.

See us on
You Tube



Outboard Surge Protection –

- Unlike other ECM motors, an outboard surge protector is included with the Azure[®] wiring harness. This is a replaceable device (MARS #08593).

Features:

- Outboard replaceable surge protector
- Adjustable speeds (with optional MARS No. 08502)
- 4 speeds plus 625 RPM constant fan mode
- Reversible rotation
- Multi-horsepower
- Dual voltage
- Belly band mount
- Ball bearing
- UL Recognized

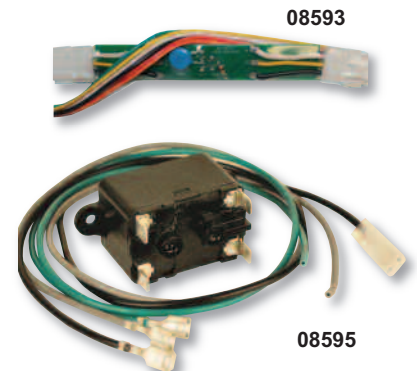
350 RPM to 1400 RPM Operating Range* – Ball Bearing

MARS NO.	HP	VOLTS	RPM	ROTATION	DIMENSIONS		
					A	B	C
10860	1/5-1/2	115/230	1075	Rev	4.93	5.72	1/2
10861	1/2-1	115/230	1075	Rev	4.93	6.66	1/2

* with use of optional hand held programmer MARS No. 08502

Accessories for Azure[®] Digi-Motor[®]

MARS NO.	DESCRIPTION
08502	Hand Held Programmer 10860/10861
08593	Replacement Surge Protector 10860/10861
08595	Constant Fan Kit 10860/10861



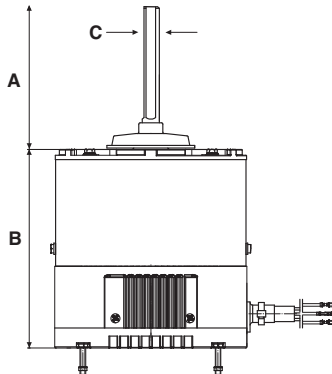


Scan for videos.



**10874
New
Compact
Size**

See us on
YouTube



Ball Bearing

MARS NO.	HP	VOLTS	RPM	ROTATION	ORIENTATION	DIMENSIONS		
						A	B	C
10874	1/8 - 1/3	208-230	825/1075	Rev	Shaft Down Only	6.50	4.33	1/2
10870	1/3 - 1/2	208-230	825/1075	Rev	Shaft Up/Down	6.00	5.95	1/2

Replacement Item for Azure[®] Digi-Motor[®]

MARS NO.	DESCRIPTION
08598	Replacement Surge Protector 10870/10874



AZURE[®] Digi-Motor[®] Condenser Fan Applications

825 & 1075 RPM Motor in One

Two Azure[®] condenser fan motors replace all 208-230V standard PSC condenser fan motors up to 1/2HP.

Easy to Mount –

- The new short shell 1/3 HP (ITEM 10874) fits where larger competitive motors will not

Easy to Configure –

- Simply power the motor to cycle it through 4 possible configurations and lock in the desired mode

1075 RPM CW • 1075 RPM CCW • 825 RPM CW • 825 RPM CCW

Simple 2 Wire Installation –

- Connect the 2 motor leads directly to the definite purpose contactor; there are no capacitor, rotation, or RPM jumper wires

Outboard Surge Protection –

- Unique to Azure[®] is the replaceable outboard surge protector included within the wire harness of each Azure[®] condenser fan motor

Features:

- Multi HP, reversible, 825/1075 RPM
- High efficiency
- Ball bearing
- Water slinger on shaft
- No capacitor required
- Rheem mounting holes (10874)
- 2 year warranty
- UL Recognized

Benefits:

- Reduces truck stock
- Reduces energy consumption
- Provides quiet operation
- Improves reliability

Cross Reference

MARS No.	Replaces
10874	PSC motors 1/8 - 1/3 HP
10870	PSC motors 1/3 - 1/2 HP



Condenser Fan Motors - Single Phase - PSC

5 1/2 inch dia. MARS SERIES 100



Outdoor Condenser Fan Motors

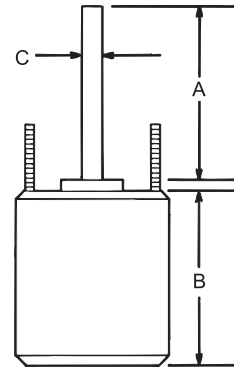
MARS up/down outdoor condenser fan motors are designed for either vertical shaft-up or shaft-down applications. Shell and end shields are enclosed for weather protection. A weep hole is provided in each end shield to allow condensate to drain. All of these motors are suitable for air conditioning or heat pump applications.

Features:

- All angle, sleeve or ball bearing
- Rheem mounting holes w/screws installed
- Water slinger on shaft
- Thru bolt or band mounting
- Capacitor requirement noted on motor label
- Double full flatted shaft

Specifications:

- Class "B" insulation
- Single phase, 60 Hertz
- Thermal overload protected
- Fan duty, continuous, air over
- Totally enclosed non-ventilated
- 26 & 36 inch leads



Cross Reference

MARS No.	GE/ Genteq	Century/ AO Smith	US Motors/ Emerson	Fasco	Marathon	Wagner	Packard	YORK Source 1	Rheem/Ruud Protech	Carrier/Totaline RCD	Nordyne Partner's Choice	ROTOM
10727	3727	FSE1016S	1859	D917	X411	WG840727	43727	S1-FHM3727	W51-16CJA1-01	P257-8727	01-0160	
10728	3728	FSE1026S	1860	D909	X412	WG840728	43728	S1-FHM3728	W51-14CJA1-01	P257-8728	01-0161	
10729	3729	FSE1036S	1861	D908	X413	WG840729	43729	S1-FHM3729	W51-13CJA1-01	P257-8729	01-0162	
10730	3730	FSE1056S	1862	D907	X414	WG840730	43730	S1-FHM3730	W51-12CJA1-01	P257-8730	01-0163	
10731	3731	FSE1076S	1868	D933		WG840731	43731	S1-FHM3731	51-42534-19	P257-8731	01-0164	
10403	3403	FSE1018SF	1873	D798	X465		60825		51-23055-12		0165	
10404	3404	FSE1028SF	1874	D934		WG840204	40825	S1-FHM3204	51-23054-13		0166	R22445
10405	3405	FSE1038SF	1875	D796	X451	WG840205	30825	S1-FHM3205		P257-8026	0167	R22345
10746	3746	FSE1058SF	1870	D713	X452						0168	R22245

Reversible Rotation – Single Speed

MARS NO.	HP	VOLTS	AMPS	CAP REQUIRED	ENCL.	BRG.	DIMENSIONS			LEAD LENGTHS
							A	B	C	

1075 RPM

10727	1/6	208-230	0.90	5/370	TEAO	Sleeve	6.50	4.23	1/2	26"
10728	1/4	208-230	1.8	5/370	TEAO	Sleeve	6.50	4.23	1/2	26"
10729	1/3	208-230	2.4	7.5/370	TEAO	Sleeve	6.50	5.23	1/2	26"
10730	1/2	208-230	3.5	10/370	TEAO	Sleeve	6.50	5.73	1/2	26"
10731	3/4	208-230	5.2	10/370	TEAO	Ball	6.50	6.23	1/2	30.5"

825 RPM

10403	1/6	208-230	1.0	5/370	TEAO	Sleeve	6.50	4.23	1/2	36"
10404	1/4	208-230	2.2	5/370	TEAO	Sleeve	6.50	4.48	1/2	36"
10405	1/3	208-230	1.9	7.5/370	TEAO	Sleeve	6.50	5.23	1/2	36"
10746	1/2	208-230	2.8	12.5/370	TEAO	Sleeve	6.50	5.70	1/2	36"



Condenser Fan Motors – Single Phase – PSC



5 1/2 inch dia. MARS SERIES **100**



Outdoor Condenser Fan Motors Ball Bearing

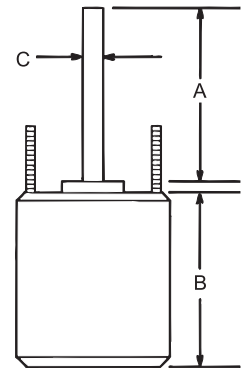
MARS up/down outdoor condenser fan motors are designed for either vertical shaft-up or shaft-down applications. Shell and end shields are enclosed for weather protection. A weep hole is provided in each end shield to allow condensate to drain. All of these motors are suitable for air conditioning or heat pump applications.

Features:

- All angle
- Rheem mounting holes w/screws installed
- Water slinger on shaft
- Thru-bolt or band mounting
- Capacitor requirement noted on motor label
- Extra set of nuts & star washers on mounting studs
- Double full flattened shaft

Specifications:

- Class "B" insulation
- Single phase, 60 hertz
- Thermal overload protected
- Totally enclosed non-ventilated
- 36 inch leads



Cross Reference

MARS No.	GE/Genteq	Fasco	Marathon	Century/AO Smith	US Motors/ Emerson	Packard	York Source 1	RO TOM
10203	3203	D793	X465	FE1018SF, FSE1018SF				CF-816
10204	3204		X450	FE1028SF, FSE1028SF	1874	40825	S1-FHM3204	CF-814
10205	3205		X451	FE1038SF, FSE1038SF	1875	30825	S1-FHM3205	
10732	3726		X427		2246			CF-3726
10733	3732	D7909	X428	F1026S, FE1026SF, FSE1026SV1	1876	51876		CF-3732
10734	3733	D7908	X413	F1036S, FE1036S	1877	51877		CF-3733
10735	3734	D7907	X414	F1056S, FE1056SF	1878	51878		CF-3734
10736	3735		X469	F1076SF, FS1076S	1879	51879		CF-3735
10747	3736		X452	F1058				

Reversible Rotation

MARS NO.	HP	VOLTS	AMPS	RPM	CAP REQUIRED	DIMENSIONS		
						A	B	C

1075 RPM

10732	1/6	208-230	0.90	1075	5/370	6.50	4.13	1/2
10733	1/4	208-230	1.8	1075	5/370	6.50	4.25	1/2
10734	1/3	208-230	2.4	1075	7.5/370	6.50	5.10	1/2
10735	1/2	208-230	3.5	1075	10/370	6.50	5.70	1/2
10736	3/4	208-230	5.2	1075	10/370	6.50	5.11	1/2

825 RPM

10203	1/6	208-230	1.0	825	5/370	5.50	4.10	1/2
10204	1/4	208-230	2.2	825	5/370	5.50	4.40	1/2
10205	1/3	208-230	1.9	825	7.5/370	5.50	5.10	1/2
10747	1/2	208-230	2.8	825	12.5/370	6.50	5.70	1/2





Condenser Fan Motors - Single Phase - PSC

5 1/2 inch dia. MARS SERIES 101



Outdoor Condenser Fan Motors - Shaft Up Only

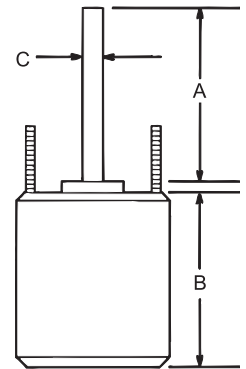
MARS outdoor condenser fan motors are designed for shaft up only used in condenser fan and heat pump units requiring vertical shaft up positioning with "belly band" or extended clamp screw mounting.

Features:

- Rheem mounting holes w/screws installed
- For shaft up application
- Reversible rotation
- Water slinger on shaft
- Full flatted six inch shaft length
- Capacitor requirement noted on motor label

Specifications:

- Class "B" insulation
- Single phase, 60/50 Hertz
- Automatic thermal overload protected
- Fan duty, continuous, air over
- 36 inch leads
- Lead end endshield open construction



Cross Reference

MARS No.	GE/Genteq	Century/AO Smith	US Motors/Emerson	Fasco	Rheem/Ruud Protec
10327	3327		8661	D718	W51-16CJA1-01
10328	3328	FS1026S	3851	D823	W51-14CJA1-01
10329	3329	FS1036S	6880	D748/D749	W51-13CJA1-01
10330	3330	FS1056S	3852	D745/D804	W51-12CJA1-01
10331	3331	FS1076S	3097	D929	

1075 RPM – Shaft-Up – Single Speed – Sleeve Bearings

MARS NO.	HP	VOLTS	AMPS	ROTATION	CAP REQUIRED	DIMENSIONS		
						A	B	C
10327	1/6	208-230	0.9	REV	5/370	6.0	4.15	1/2
10328	1/4	208-230	1.8	REV	5/370	6.0	4.15	1/2
10329	1/3	208-230	2.4	REV	7.5/370	6.0	5.11	1/2
10330	1/2	208-230	3.5	REV	10/370	6.0	5.70	1/2
10331	3/4	208-230	5.2	REV	10/370	6.0	6.09	1/2

MARS Technical Help Line

800-678-9888

M-F 8 am – 5 pm EST.



Condenser Fan Motors – Single Phase – PSC

5½ inch dia. MARS SERIES 118



Outdoor Condenser Fan Motors Ball Bearing - 70°C

MARS 70°C SunSlinger totally enclosed condenser fan motors are designed for either vertical shaft-up or shaft-down applications in a variety of ambient conditions. Shell and end shields are enclosed for weather protection. A weep hole is provided in each end shield to allow condensate to drain. All of these motors are suitable for air conditioning or heat pump applications.

Features:

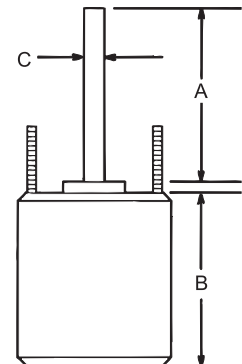
- All angle
- Rheem mounting holes w/screws installed
- Trane 4.33 bolt circle mounting holes with self tapping screws
- Thru bolt or band mounting
- Water slinger on shaft
- Capacitor requirement noted on motor label
- Extra set of nuts on mounting studs

Specifications:

- Class “B” insulation
- Single phase, 60 Hertz
- 70°C/158°F
- Thermal overload protected
- Fan duty, continuous, air over
- Totally enclosed non-ventilated
- 36 inch leads

Cross Reference

MARS No.	US Motors/ Emerson	Century/ AO Smith	Wagner	GE/Genteq	York Source 1
20727	1859H	FE1016SF	WG840727HT	3726HS	
20728	1860H	FE1026SF	WG840728HT	3732HS	S1-FHM3728HT
20729	1861H	FE1036SF	WG840729HT	3733HS	S1-FHM3729HT
20730	1862H	FE1056SF	WG840730HT	3734HS	S1-FHM3730HT
20731	1868H	FE1076SF	WG840731HT	3735HS	
20402	1872H	FE1008SF		3202HS	
20403	1873H	FE1018SF		3203HS	
20404	1874H	FE1028SF	WG840204HT	3204HS	S1-FHM3204HT
20405	1875H	FE1038SF	WG840205HT	3205HS	S1-FHM3205HT
20746	1870H	FE1058SF		3747HS	



Reversible Rotation – Single Speed

MARS NO.	HP	VOLTS	AMPS	CAP REQUIRED	ENCL.	DIMENSIONS		
						A	B	C

1075 RPM

20727	1/6	208-230	0.90	5/370	TEAO	6.50	4.25	1/2
20728	1/4	208-230	1.8	5/370	TEAO	6.50	4.72	1/2
20729	1/3	208-230	2.4	7.5/370	TEAO	6.50	5.24	1/2
20730	1/2	208-230	3.5	10/370	TEAO	6.50	5.91	1/2
20731	3/4	208-230	5.2	10/370	TEAO	6.50	5.90	1/2

825 RPM

20402	1/8	208-230	0.75	5/370	TEAO	6.50	4.30	1/2
20403	1/6	208-230	1.0	5/370	TEAO	6.50	4.52	1/2
20404	1/4	208-230	2.2	5/370	TEAO	6.50	4.92	1/2
20405	1/3	208-230	1.9	7.5/370	TEAO	6.50	5.31	1/2
20746	1/2	208-230	2.8	12.5/370	TEAO	7.00	5.90	1/2





Condenser Fan Motors – Single Phase – PSC

5 1/2 inch dia. MARS SERIES 208



Outdoor Condenser Fan Motors Ball Bearing – 80°C

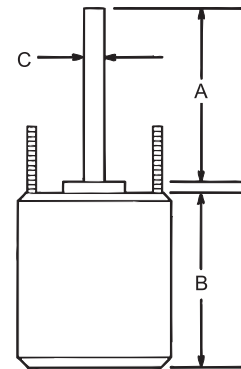
MARS 80°C SunSlinger Max totally enclosed condenser fan replacement motors are designed for all major brands of HVAC equipment applications in a variety of ambient conditions. These 48 frame motors offer the highest performance and available from 1/6HP thru 3/4HP, 1075 RPM and 825 RPM, and 208-230V.

Features:

- All angle
- Rheem mounting holes w/screws installed
- Trane 4.33 bolt circle mounting holes with self tapping screws
- Thru bolt or belly band mounting
- Water slinger on shaft
- Capacitor requirement noted on motor label
- Extra set of nuts on mounting studs

Specifications:

- Class "F" insulation
- Single phase, 60 Hz
- 80°C (176°F) max ambient
- Thermal overload protection
- Fan duty, continuous, air over
- Totally enclosed
- 36 inch leads
- UL Recognized



Cross Reference

MARS No.	Century/AO Smith
20797	
20798	FE1026SU
20799	FE1036SU
20790	FE1056SU
20791	FE1076SU
20492	
20493	FE1028SU
20494	FE1038SU
20495	FE1058SU
20796	

Reversible Rotation

MARS NO.	HP	VOLTS	AMPS	RPM	CAP REQUIRED	ENCL.	DIMENSIONS		
							A	B	C

1075 RPM

20797	1/6	208-230	0.90	1075	5/370	TEAO	6.50	4.25	1/2
20798	1/4	208-230	1.8	1075	5/370	TEAO	6.50	4.72	1/2
20799	1/3	208-230	2.4	1075	7.5/370	TEAO	6.50	5.24	1/2
20790	1/2	208-230	2.6	1075	10/370	TEAO	6.50	5.91	1/2
20791	3/4	208-230	4.5	1075	10/370	TEAO	6.50	6.50	1/2

825 RPM

20492	1/8	208-230	0.75	825	5/370	TEAO	6.50	4.41	1/2
20493	1/6	208-230	0.80	825	5/370	TEAO	6.50	4.53	1/2
20494	1/4	208-230	1.8	825	5/370	TEAO	6.50	4.92	1/2
20495	1/3	208-230	1.9	825	7.5/370	TEAO	6.50	5.31	1/2
20796	1/2	208-230	2.8	825	12.5/370	TEAO	7.00	6.42	1/2



Condenser Fan Motors – Single Phase – PSC

5½ inch dia. MARS SERIES 203



MARS 460V Outdoor Condenser Fan Motors Ball Bearing - 70°C

MARS 70°C SunSlinger totally enclosed outdoor condenser fan motors are designed for all angle air conditioning or heat pump applications. A weep hole is provided in each end shield to allow condensate to drain.

Features:

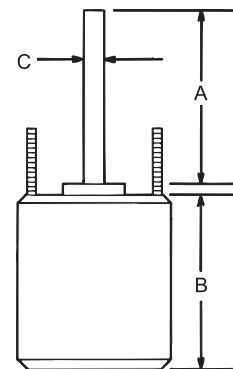
- All angle
- Rheem mounting holes w/screws installed
- Trane 4.33 bolt circle mounting holes and self tapping screws
- Extended thru bolt or band mounting and extra nuts
- Capacitor requirement noted on motor label
- Water slinger on shaft
- End shield drain holes w/plugs

Specifications:

- Single phase, 60 Hz
- 70°C/158°F
- Thermal overload protected
- Totally enclosed non-ventilated
- 48 inch leads, Multi-HP
- 36 inch leads

Cross Reference

MARS No.	Century/AO Smith	US Motors/Emerson	Fasco	GE/Genteq	Rheem/Ruud Protech	Wagner	York Source 1	ROTOM
20859					51-101774-06			R31716
20880	FEH1028S	1880			51-23064-12			R22275
20881		1881	D960		51-100998-26			R32714
20882		1882	D961					
20835								
20836	788A, FEH1026SF	3736H	D980	3736	51-19704-01	WG840736HT	S1-FHM3736HT	R31710
20837	789A, FEH1036SF	3737H	D982	3737	51-23063-11	WG840737HT	S1-FHM3737HT	R31712
20838	790A, FEH1056SF	3738H	D802	3738	51-20929-01	WG840738HT	S1-FHM3738HT	R31718
20842	FEH1076SF	3742H		3739		WG840739HT		
20478	ORM4658BF							
20479	ORM4659BF							
20480		5480H						
20481		5481H						



Reversible Rotation

MARS NO.	HP	VOLTS	AMPS	RPM	CAP REQUIRED	DIMENSIONS		
						A	B	C

1075 RPM – Single Speed

20835	1/6	460	0.48	1075	5/440	6.50	4.32	1/2
20836	1/4	460	0.65	1075	7.5/440	6.50	4.52	1/2
20837	1/3	460	0.90	1075	7.5/440	6.50	5.38	1/2
20838	1/2	460	1.3	1075	10/440	6.50	5.86	1/2
20842	3/4	460	2.0	1075	10/440	6.50	6.29	1/2

825 RPM – Single Speed

20859*	1/6	460	0.53	825	5/440	3.22	4.52	1/2
20880	1/4	460	0.90	825	5/440	6.50	5.00	1/2
20881	1/3	460	1.0	825	7.5/440	6.50	5.62	1/2
20882	1/2	460	1.55	825	10/440	6.50	6.34	1/2

1075 RPM – Multi-HP

20478	1/3 - 1/6	460	1.2	1075	7.5/370	6.50	4.90	1/2
20479	1/2 - 1/5	460	1.5	1075	10/370	6.50	5.60	1/2
20480	1/2 - 1/6	460	1.46	1075	10/440	5.50	5.70	1/2
20481	3/4 - 1/4	460	2.12	1075	15/440	5.50	6.48	1/2

One-On-One™ Replacement Motor for AO Smith ORM4688BF

MARS NO.	HP	ROT	RPM/SPDS	VOLTS	AMPS	CAP REQUIRED	ENCL.	BRG.	DIMENSIONS		
									A	B	C
20884	1/8, 1/6, 1/5, 1/4, 1/3	REV	825/1	460	1.0	7.5/370	TEAO	Ball	6.50	5.3	1/2



Condenser Fan – Single Phase-PSC

5½ inch dia. MARS SERIES 203



MARS 460V Outdoor Condenser Fan Motors – Shaft Up Only Ball Bearing - 70°C

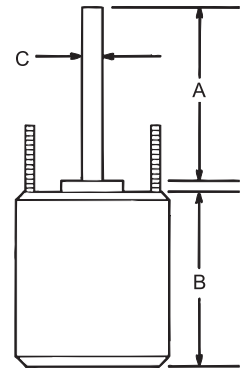
MARS 70°C SunSlinger totally enclosed outdoor condenser fan motors are designed for Shaft Up Only. All of these motors are suitable for air conditioning or heat pump applications. A weep hole is provided in each end shield to allow condensate to drain.

Features:

- Shaft up only, ball bearing
- Rheem mounting holes w/screws installed
- Extended thru bolt or band mounting
- Capacitor requirement noted on motor label

Specifications:

- Single Phase, 60 Hz
- 70°C, 158°F
- Thermal overload protected
- Totally enclosed non-ventilated



Cross Reference

MARS No.	GE/ Genteq	Century/ AO Smith	US Motors/ Emerson	Fasco	Wagner	YORK Source 1	Rheem/Ruud Protech	ROTOM
20846	3736HS	FEH1026S	3736H	D980	WG840736HT	S1-FHM3736HT	51-19704-01	R31710
20847	3737HS	FEH1036S	3737H	D982	WG840737HT	S1-FHM3737HT	51-23063-11	R31712
20848	3738HS	FEH1056S	3738H	D802	WG840738HT	S1-FHM3738HT	51-20929-01	R31718
20849	3739HS	FEH1076S	3739H		WG840739HT			

Reversible Rotation

MARS NO.	HP	VOLTS	AMPS	CAP REQUIRED	A	DIMENSIONS B	C	LEAD LENGTHS
----------	----	-------	------	--------------	---	--------------	---	--------------

1075 RPM - Single Speed

20846	1/4	460	0.65	7.5/440	6.50	4.60	1/2	36"
20847	1/3	460	0.90	7.5/440	6.50	5.50	1/2	36"
20848	1/2	460	1.3	10/440	6.50	5.90	1/2	36"
20849	3/4	460	2.05	10/440	7.00	6.20	1/2	47"



Condenser Fan Motors – Single Phase – PSC



5½ inch dia. MARS SERIES **208**



MARS 460V Outdoor Condenser Fan Motors Ball Bearing – 80°C

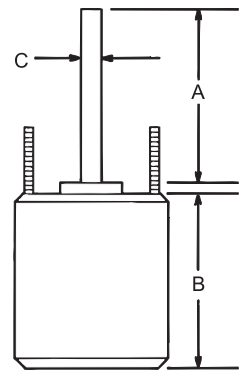
MARS 80°C SunSlinger MAX totally enclosed condenser fan replacement motors are designed for all major brands of HVAC equipment applications in a variety of ambient conditions. These 48 frame motors offer the highest performance and available from 1/6HP thru 3/4HP, 1075 RPM and 825 RPM, and 460V.

Features:

- All angle
- Rheem mounting holes w/screws installed
- Trane 4.33 bolt circle mounting holes with self tapping screws
- Thru bolt or belly band mounting
- Water slinger on shaft
- Capacitor requirement noted on motor label
- Extra set of nuts on mounting studs

Specifications:

- Class “F” insulation
- Single phase, 60 Hz
- 80°C (176°F) max ambient
- Thermal overload protection
- Fan duty, continuous, air over
- Totally enclosed
- 36 inch leads
- UL Recognized



Cross Reference

MARS No.	Century/AO Smith
20895	
20896	FEH1026SU
20897	FEH1036SU
20898	FEH1056SU
20892	
20899	
20890	
20891	

Reversible Rotation

MARS NO.	HP	VOLTS	AMPS	RPM	CAP REQUIRED	DIMENSIONS		
						A	B	C
1075 RPM								
20895	1/6	460	0.48	1075	5/440	6.50	4.41	1/2
20896	1/4	460	0.65	1075	7.5/440	6.50	4.61	1/2
20897	1/3	460	0.90	1075	7.5/440	6.50	5.51	1/2
20898	1/2	460	1.3	1075	10/440	6.50	5.91	1/2
20892	3/4	460	2.0	1075	10/440	6.50	6.30	1/2
825 RPM								
20899	1/6	460	0.53	825	5/440	3.22	4.53	1/2
20890	1/4	460	0.90	825	5/440	6.50	5.12	1/2
20891	1/3	460	1.0	825	7.5/440	6.50	5.71	1/2



Multi-Horsepower Condenser Fan Motors

Ball Bearing

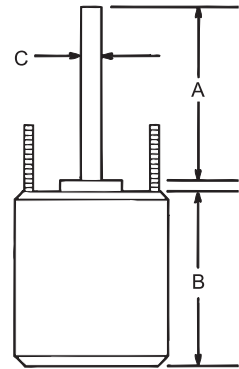
MARS multi-horsepower condenser fan motors are ideal for truck stock. Three 1075 RPM models cover 208-230 volt applications from 1/6 to 1/2 HP.

Features:

- Rheem mounting holes w/screws installed
- Thru bolt or band mounting
- Water slinger on shaft
- Air conditioning or heat pump duty

Specifications:

- Class "B" insulation
- Single phase, 60 Hz
- Thermal overload protected



Cross Reference

MARS No.	GE/ Genteq	Century/ AO Smith	US Motors/ Emerson	Fasco	Marathon	Wagner	YORK Source 1	Rheem/Ruud Protech	Carrier/ Totaline RCD	Nordyne Partners Choice	ROTOM
10458	3458	ORM5458	5458					W51-MHCJA1-01			R22402
10459	3459	ORM5488B	5464								
10465	3465	FE6000	5462	D2827	X072	WG840465	S1-FHM3465	51-23053-21	P257-E5462	01-0695	R22605
10468	3468	FE6002	5465		X076	WG840468	S1-FHM3468		P257-E5465	01-0697	R22602
10469	3469	FE6001	5464	D2826		WG840469	S1-FHM3469	51-20760-11	P257-E5464	01-0696	R22601

MARS NO.	HP	ROT	RPM/SP.	VOLTS	ENCL.	BRG.	DIMENSIONS			LEAD LENGTHS
							A	B	C	
The Wiz 10458	1/6 - 1/3	Rev	1075	208-230	TEAO	Ball	6.50	3.82	1/2	36"
10459	1/8 - 1/3	Rev	825	208-230	TEAO	Ball	6.50	5.48	1/2	36"
10465	1/6 - 1/3	Rev	1075/2	208-230	TEAO	Ball	5.00	4.73	1/2	38"
10468	1/5 - 1/2	Rev	1075/2	208-230	TEAO	Ball	5.00	5.48	1/2	38"
10469	1/6 - 1/3	Rev	825/2	208-230	TEAO	Ball	5.00	5.48	1/2	42"

Multi-Horsepower Motors

5½ inch dia. MARS SERIES 118



Multi-Horsepower Condenser Fan Motors Ball Bearing - 70°C

MARS 70°C multi-horsepower SunSlinger condenser fan motors are ideal for truck stock. They are designed to provide reliable operation in a wide range of ambient temperatures. Three 1075 RPM models cover 208-230 volt applications from 1/6 to 1/2 HP. Two 825 RPM models cover 208-230 volt applications from 1/8 to 1/3 HP.

Features:

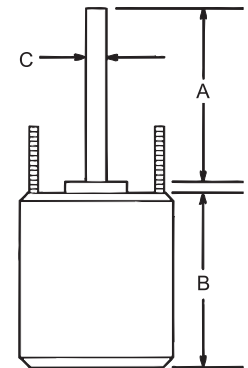
- All angle
- Rheem shell mounting holes with screws installed
- Trane 4.33 bolt circle mounting holes with self tapping screws
- Thru bolt or band mounting
- Water slinger on shaft
- Extra set of nuts on mounting studs

Specifications:

- Class "B" insulation
- Single phase, 60 Hertz
- 70°C/158°F
- 36 inch leads
- Thermal overload protected
- Fan duty, continuous, air over
- Totally enclosed

20458 & 20459:

- Short shell length
- Just ONE capacitor rating per motor
- Quick & Simple 2 wire installation



Cross Reference

MARS No.	US Motors/ Emerson	Century/ AO Smith	GE/Genteq	York Source 1
20458	3323H	ORM5458BF	3458HS	
20459	1874H	ORM5488BF	3459HS	
20465	5462H		3465HS	S1-FHM3465HT
20468	5465H	ORM5459BF	3468HS	
20469	5464H		3469HS	S1-FHM3469HT

Reversible Rotation – Multi-Horsepower

MARS NO.	HP	RPM/ SPDS	VOLTS	AMPS	CAP REQUIRED	ENCL.	BRG.	DIMENSIONS		
								A	B	C
The Wiz 20458	1/6-1/3	1075	208-230	2.8	7.5/370	TEAO	Ball	6.50	5.00	1/2
20459	1/8-1/3	825	208-230	1.9	10/370	TEAO	Ball	6.50	5.71	1/2
20465	1/6-1/3	1075/2	208-230	2.5	5/7.5/370	TEAO	Ball	7.00	5.16	1/2
20468	1/5-1/2	1075/2	208-230	3.6	10/12.5/370	TEAO	Ball	5.00	6.10	1/2
20469	1/6-1/3	825/2	208-230	1.9	10/7.5/370	TEAO	Ball	5.00	6.10	1/2

One-On-One™ Replacement Motor for Emerson 5462H

MARS NO.	HP	ROT	RPM/ SPDS	VOLTS	AMPS	CAP REQUIRED	ENCL.	BRG.	DIMENSIONS		
									A	B	C
20462	1/3, 1/4, 1/5, 1/6	REV	1075/2	208-230	2.0	5/7.5/370	TEAO	Ball	5.00	4.91	1/2

One-On-One™ Replacement Motor for Emerson 5482H

MARS NO.	HP	ROT	RPM/ SPDS	VOLTS	AMPS	CAP REQUIRED	ENCL.	BRG.	DIMENSIONS		
									A	B	C
20471	1/4, 1/3, 1/2, 3/4	REV	1075/2	208-230	4.2/3.6	15/440	TEAO	Ball	5.5	6.5	1/2

One-On-One™ Replacement Motor for AO Smith FE6003F

MARS NO.	HP	ROT	RPM/ SPDS	VOLTS	AMPS	CAP REQUIRED	ENCL.	BRG.	DIMENSIONS		
									A	B	C
20470	1/4, 1/2	REV	825/2	208-230	2.6	10/12.5/440	TEAO	Ball	6.5	6.1	1/2

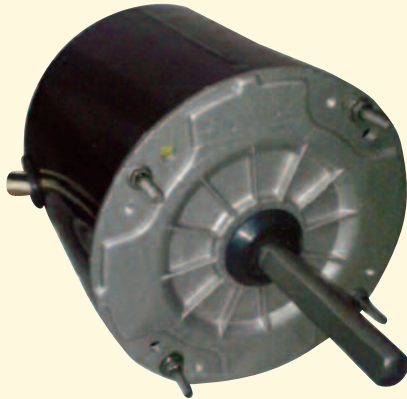
One-On-One™ Replacement Motor for AO Smith ORM5854BF

MARS NO.	HP	ROT	RPM/ SPDS	VOLTS	AMPS	CAP REQUIRED	ENCL.	BRG.	DIMENSIONS		
									A	B	C
20457	1/8, 1/10, 1/12, 1/15	REV	825/1	208-230	0.75	5/440	TEAO	Ball	6.5	4.7	1/2

One-On-One™ Replacement Motor for AO Smith ORM5454BF

MARS NO.	HP	ROT	RPM/ SPDS	VOLTS	AMPS	CAP REQUIRED	ENCL.	BRG.	DIMENSIONS		
									A	B	C
20463	1/8 - 1/15	REV	1075/1	208-230	0.65	5/440	TEAO	Ball	6.5	4.4	1/2





Super-Fit™ Multi-Horsepower Condenser 42 Frame Fan Motors Ball Bearing

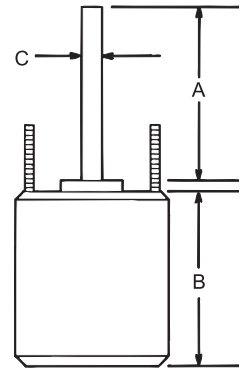
MARS 42 frame Super-Fit™ multi-horsepower condenser fan motors are ideal for truck stock. Two models cover 208-230V applications from 1/12 HP through 1/4 HP replacing many AOS, Westinghouse, Fasco, Emerson and GE motor designs.

Features:

- Super-Fit™ mounting holes for Trane 4.33, 4.42 and 4.62 bolt circle mounting. Includes self threading screws.
- All angle mount, ball bearing
- Reversible rotation
- Multi-HP
- Capacitor requirement noted on motor label
- ½ inch dia. flatted shaft
- Totally enclosed

Specifications:

- Class "B" insulation
- 42 frame
- Single phase, 60 Hz
- Continuous air over
- Thermal overload protected
- Continuous duty
- 36 inch leads



Cross Reference

MARS No.	Century/ AO Smith	US Motors/ Emerson	Fasco	GE/Genteq	Heil Quaker	MARS	York
10722	9722	5440*		5KCP29DCA323S, 5KCP29ECA328S, 5KCP29DCA329S, 5KCP29FCA322S		02243, 02248, 02249, 02251	17416, 17465, 17483, 17484
10723	9723	5441*, 1901	D1071	5KCP29JCA324S, 5KCP29JCA325S, 5KCP29HCA326S, 5KCP29JCA327S, 5KCP29ECA321S	HQ1052662EM	02244, 02245, 02246, 02247, 02250	
10724	9724						

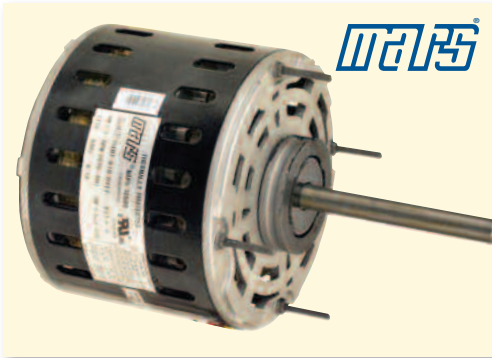
* 70°C Heat Shield

Reversible Rotation – Single Speed

MARS NO.	HP	VOLTS	AMPS	RPM	CAP	ENCL.	BEARING	DIMENSIONS		
								A	B	C
10722	1/8, 1/10, 1/12	208-230	0.75	1075	5/370	TEAO	Ball	3.00	4.13	1/2
10723	1/4, 1/5, 1/6	208-230	1.5	1075	7.5/370	TEAO	Ball	3.00	4.72	1/2
10724	1/4, 1/5, 1/6	208-230	1.35	1625	5/370	TEAO	Ball	3.00	4.60	1/2

Direct Drive Blower Motors

5½ inch dia. MARS SERIES 112 & 113



Direct Drive Furnace Blower Motors

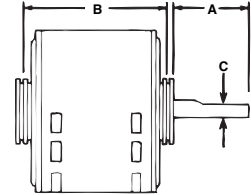
MARS direct drive furnace blower motors are three speed standard efficiency models. All models are electrically reversible and include 2 1/4 inch resilient rings for base mounting. These models have all angle sleeve bearings and have open air over enclosures.

Features:

- Sleeve bearing
- Rheem mounting holes
- 3 speeds
- 1/2 inch extended thru bolts
- 2-1/4 inch resilient rings
- For accessories see page 33

Specifications:

- Class "B" insulation
- Single phase, 60 Hertz
- Thermal overload protected
- Fan duty, continuous, air over
- Open construction



Cross Reference

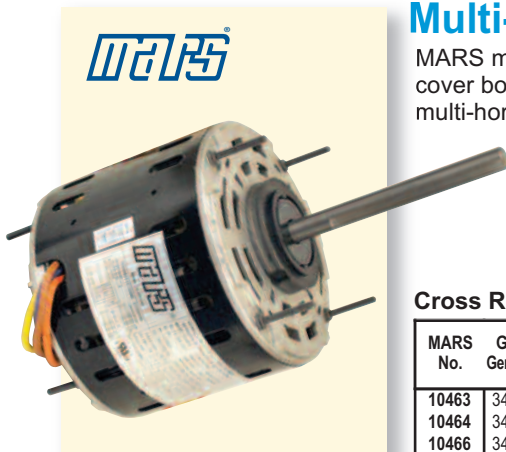
MARS No.	GE/ Genteq	Century/ AO Smith	US Motors/ Emerson	Fasco	Marathon	Wagner	Packard	YORK Source 1	Rheem/Ruud Protech	Carrier/Totaline RCD	Nordyne Partner's Choice	ROTOM
10583	3583	DL1026	1863	D721	X000	WG840583	43583	S1-FHM3583	W51-14BAA3-01	P257-8583	01-0169	DD-3583
10584	3584	D1026	1971	D725	X001	WG840584	43584	S1-FHM3584	W51-14BJA3-01	P257-8584	01-0173	DD-3584
10585	3585	DL1036	1864	D727	X002	WG840585	43585	S1-FHM3585	W51-13BAA3-01	P257-8585	01-0170	DD-3585
10586	3586	D1036	1972	D923	X003	WG840586	43586	S1-FHM3586	W51-13BJA3-01	P257-8586	01-0174	DD-3586
10587	3587	DL1056	1865	D701	X004	WG840587	43587	S1-FHM3587	W51-12BAA3-01	P257-8587	01-0171	DD-3587
10588	3588	D1056	1973	D703	X005	WG840588	43588	S1-FHM3588	W51-12BJA3-01	P257-8588	01-0175	DD-3588
10589	3589	DL1076	8904	D728	X009	WG840589	43589	S1-FHM3589	W51-34BAA3-01	P257-8589	01-0172	DD-3589
10590	3590	D1076	8905	D729	X010	WG840590	43590	S1-FHM3590	W51-34BJA3-01	P257-8590	01-0176	DD-3590
10591	3595	BDL1106	8906	D712		WG840595		S1-FHM3595				R6-R42812
10592	3596	BD1106	8907	D711	X023	WG840596	48907	S1-FHM3596				R6-R42842

1075 RPM – Three Speed – Reversible Rotation

MARS NO.	HP	ROT	VOLTS	AMPS	CAP REQUIRED	ENCL.	BRG.	DIMENSIONS			LEAD LENGTHS
								A	B	C	
10583	1/4	Rev	115	4.2	5/370	OAO	Slv	4.50	4.89	1/2	26"
10584	1/4	Rev	208-230	1.8	5/370	OAO	Slv	4.50	4.89	1/2	26"
10585	1/3	Rev	115	6.1	5/370	OAO	Slv	4.50	5.14	1/2	30"
10586	1/3	Rev	208-230	2.7	5/370	OAO	Slv	4.50	5.14	1/2	26"
10587	1/2	Rev	115	7.5	10/370	OAO	Slv	4.50	5.89	1/2	29.33"
10588	1/2	Rev	208-230	3.2	7.5/370	OAO	Slv	4.50	5.64	1/2	29"
10589	3/4	Rev	115	11.2	15/370	OAO	Slv	4.50	6.14	1/2	30.25"
10590	3/4	Rev	208-230	4.5	10/370	OAO	Slv	4.50	6.14	1/2	30.25"
10591	1	Rev	115	11.8	20/370	OAO	Slv	4.50	5.80	1/2	36"
10592	1	Rev	208-230	5.6	15/370	OAO	Slv	4.50	5.80	1/2	36"

Multi-Horsepower Direct Drive Furnace Blower Motors

MARS multi-horsepower direct drive blower motors are ideal for truck stock. Four models cover both 115 volt and 208-230 volt applications from 1/6 through 3/4 HP. All MARS multi-horsepower motors feature Rheem shell mounting holes.

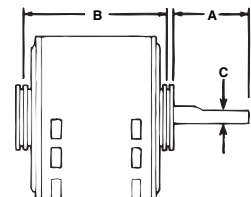


Features:

- Rheem mounting holes
- Reversible rotation
- 2-1/4 inch resilient rings

Specifications:

- Class "B" insulation
- Single phase, 60 Hz
- Thermal overload protected
- 36 & 41 inch leads



Cross Reference

MARS No.	GE/ Genteq	Century/ AO Smith	US Motors/ Emerson	Fasco	Marathon	Wagner	YORK Source 1	Rheem/Ruud Protech	Carrier/Totaline RCD	Nordyne Partner's Choice	ROTOM
10463	3463	FDL6001	5460	D2835	X077	WG840463	S1-FHM3463	51-23012-41	P257-E5460	01-0698	R43600
10464	3464	FD6000	5461	D833	X073	WG840464	S1-FHM3464	51-23022-41	P257-E5461	01-0699	R43601
10466	3466	FDL6002	5470	D2832	X074	WG840466	S1-FHM3466	51-23017-42	P257-E5470	01-0702	R43602
10467	3467	FD6001	5471	D2833	X075	WG840467	S1-FHM3467	51-23022-41	P257-E5471	01-0701	R43603
10479			5469								

Four Speed

MARS NO.	HP	ROT	VOLTS	RPM	ENCL.	BRG.	DIMENSIONS			LEAD LENGTHS
							A	B	C	
10463	1/6 - 1/2	Rev	115	1075	OAO	Slv	5.50	4.73	1/2	41"
10464	1/6 - 1/2	Rev	230	1075	OAO	Slv	5.50	4.73	1/2	41"
10466	1/5 - 3/4	Rev	115	1075	OAO	Ball	5.80	5.73	1/2	41"
10467	1/5 - 3/4	Rev	230	1075	OAO	Ball	5.60	5.23	1/2	41"
10479	1/8 - 1/3	Rev	230	825	OAO	Slv	4.50	5.30	1/2	36"





Direct Drive Blower Motors – PSC

5 1/2 inch dia. MARS SERIES **112**



MARS 48 Frame Torsion Flex Mount Motors

MARS torsion flex mount motors are designed for direct drive furnace blower applications. The unique torsion flex mounting speeds installation while the special steel of the torsion flex bracket absorbs vibration for quieter operations. All models are electrically reversible, 3 speed motors.

Features:

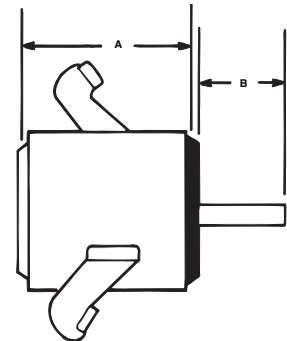
- Sleeve bearing
- Torsion flex mount
- 3 speeds
- 4-1/2 inch long, 1/2 inch diameter shaft
- Torsion mount sleeves and grommets included

Specifications:

- Class “B” insulation
- Single phase, 60 Hertz
- Thermal overload protected
- Fan duty, continuous, air over
- Open construction
- 36 inch leads

Cross Reference

MARS No.	Century/AO Smith	US Motors/ Emerson	Fasco	GE/Genteq
10683	FML1026	3783	D1730	3783
10684	FM1026	3784	D1733	3784
10685	FML1036	3785	D1731	3785
10686	FM1036	3786	D1734	3786
10687	FML1056	3787	D1732	3787
10688	FM1056	3788	D1735	3788
10689	FML1076V1			3789
10690	FM1076			3790



1075 RPM – Three Speed – Reversible Rotation

MARS NO.	HP	ROTATION	VOLTS	AMPS	CAP REQUIRED	ENCL.	BRG.	DIMENSIONS		
								A	B	C
10683	1/4	REV	115	4.2	5/370	OAO	SLV	4.50	4.89	1/2
10684	1/4	REV	208-230	1.8	5/370	OAO	SLV	4.50	4.89	1/2
10685	1/3	REV	115	6.1	5/370	OAO	SLV	4.50	5.14	1/2
10686	1/3	REV	208-230	2.7	5/370	OAO	SLV	4.50	5.14	1/2
10687	1/2	REV	115	7.5	10/370	OAO	SLV	4.50	5.89	1/2
10688	1/2	REV	208-230	3.2	7.5/370	OAO	SLV	4.50	5.64	1/2
10689	3/4	REV	115	11.2	15/370	OAO	SLV	4.50	6.14	1/2
10690	3/4	REV	208-230	4.5	10/370	OAO	SLV	4.50	6.14	1/2

MARS Technical Help Line

800-678-9888

M-F 8 am – 5 pm EST.



Direct Drive Blower Motors

5 1/2 inch dia. MARS SERIES 111



MARS 460V Direct Drive Blower Motors

Ball Bearing

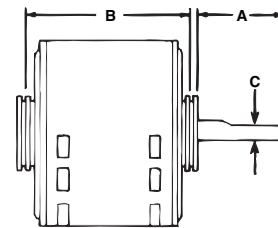
MARS direct drive blower motors are installed in residential and commercial furnaces, air conditioners, exhaust fans, and other air handling equipment.

Features:

- All angle
- 2 speeds
- Extended studs
- 2-1/4 inch resilient rings

Specifications:

- Class "B" insulation
- Single phase, 60 Hz
- Thermal overload protected
- 36 inch leads



Cross Reference

MARS No.	GE/ Genteq	Century/ AO Smith	US Motors/ Emerson	Marathon	ROTOM
20538				X038	
20580	3280	BDH1036			M2-R32712
20581	3290	BDH1076	8947		M2-R32426

Direct Drive

MARS NO.	HP	VOLTS	AMPS	CAP REQUIRED	ENCL.	BRG.	DIMENSIONS		
							A	B	C
1075 RPM – Two Speed – Reversible Rotation									
20538	1/2	460	1.8	10/370	OAO	Ball	6.50	5.25	1/2

Direct Drive Multi-Horsepower

MARS NO.	HP	VOLTS	AMPS	CAP REQUIRED	ENCL.	BRG.	DIMENSIONS		
							A	B	C
1075 RPM - Two Speed - Reversible Rotation									
20580	1/3 - 1/4	460	0.95	7.5/370	OAO	Ball	6.50	4.50	1/2
20581	3/4 - 1/2	460	2.1	15/370	OAO	Ball	4.50	5.80	1/2





Belted Fan & Blower Motors

Ball Bearing

MARS belted blower motors are designed to meet manufacturer's requirements for belted fan or blowers.

Features:

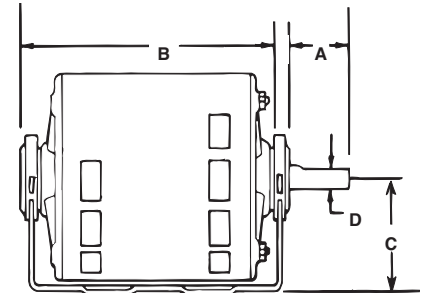
- Resilient base mounted
- Slotted holes in base match 48 or 56 frame bolt patterns
- ½ inch shaft diameter

Specifications:

- Class "B" insulation
- Single phase, 60 Hz
- Thermal overload protected
- Open construction
- Continuous duty

Cross Reference

MARS No.	Century/ AO Smith	US Motors/ Emerson	GE/ Genteq	Magnetek	Marathon	Packard	ROTOM
10401	GF2024, RB2024	2889, 8000	4701	808, 802	B303, B206	45014	BF-4701
10406	GF2034, RB2034	2888, 8100	4706	922, 805	B305, B207	45013	BF-4706
10408	GF2054, BF2054	2887, 8200	4708	F681, 811	B208	45012	BF-4708



1725 RPM – Single Speed – Reversible Rotation

MARS NO.	HP	VOLTS	FLA	SF	DIMENSIONS				NEMA FRAME
					A	B	C	D	
10401	1/4	115	4.3	1.35	1.85	6.25	3.00	1/2	48/56
10406	1/3	115	5.8	1.35	1.85	6.25	3.00	1/2	48/56
10408	1/2	115	7.7	1.25	1.85	6.88	3.00	1/2	48/56



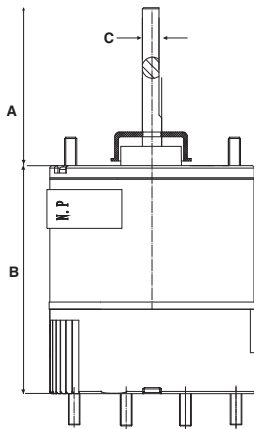
Azure[®] Digi-Motor[®] 3.3" Commercial Refrigeration (Walk-In) Evaporator Fan Motor

Ball Bearing

Azure[®] is an electronically controlled 3.3" motor (ECM) that replaces all 1/15 - 1/25 HP, 115/230V, and 1550/800 RPM commercial refrigeration evaporator fan motors for walk in cooler/freezer applications. For 1550 RPM, this motor connects easily to the fan controller via a standard Lyall plug. For 2-speed applications, the Lyall plug can be removed and the motor can be wired directly to a separate 2-speed control module using the included second speed tap for 800 RPM. Motor rotation is set using a simple jumper wire. Azure[®] is rated for 115V or 230V with nothing to set; plug it in to either voltage and it adapts to the correct voltage.

Specifications:

- Temperature Operating Range:
-40° to 131°F
- Multi horsepower, self adjusting
from 1/15 to 1/25HP
- 1 or 2 speed operation
(1550/800 RPM)
- Reversible rotation
- Auto voltage select (115/230V)
- High efficiency ECM technology
- No capacitor required
- UL Recognized



Cross Reference

MARS No.	Regal Beloit/Morrill	Wellington	US Motors
10850	5100, 5105, 5106, 5101, 5111, 5200, 5201, 5205, 5206, 5211	ECR 85/95	EC5404D, EC5405D

MARS NO.	HP	VOLTS	RPM	ROTATION	DIMENSIONS		
					A	B	C
10850	1/15 - 1/25	115/230	1550/800	Rev	2.5	3.74	5/16



NEW

Azure® Commercial Refrigeration Watt (Reach-In) Motor

Ball Bearing

MARS ECM watt motor is a Drop in replacement for most OEM / ECM / PSC and standard shaded pole commercial refrigeration evaporator and condenser fan motors. Capable of replacing most 1550 RPM case motors 4 - 25W for reach-in cooler/freezer applications. The microprocessor sets power output to match the fan load ensuring correct CFM and maximum efficiency in every installation. Automatically senses and adapts to the system voltage (115/230V). Optional software kit allows the speed to be set anywhere between 600 RPM and 2000 RPM, and the rotation to be reversed making the Azure® motor the most versatile case motor available.

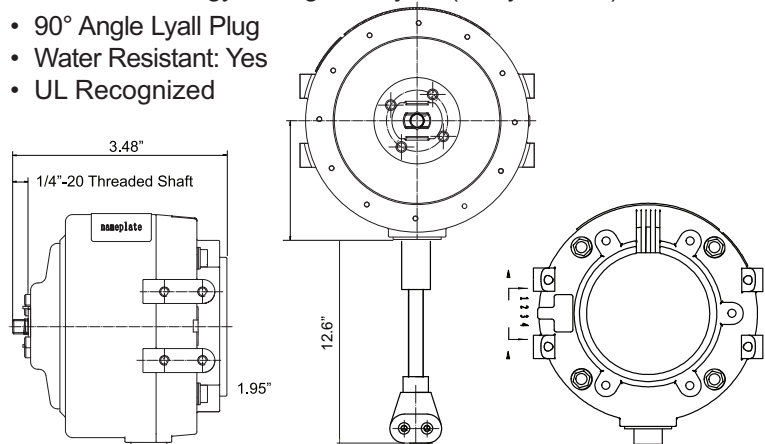
Specifications:

- Operating Range: -40° to 131°F
- Self adjusting from 4 to 25 Watts
- Programmable
- 1550 RPM*
- CWLE* Rotation
- Auto Voltage Select (115/230V)
- High efficiency ECM technology: 68%
- Estimated Energy Savings: \$33/year (\$46/year total)**
- 90° Angle Lyall Plug
- Water Resistant: Yes
- UL Recognized

Power Consumption		
Fan Load	Standard Motor Power Consumption	Azure® Power Consumption
4 W	28 W	6 W
9 W	47 W	14 W
16 W	77 W	30 W

Cross Reference

MARS No.	Replaces
10890	All standard watt motors up to 25W; Morrill SSC ECM and US Motors Rescue ECM (EC5411, EC5421) up to 25W



MARS NO.	WATTS OUTPUT	VOLTS	RPM	ROTATION	LEAD LENGTH
10890	4 - 25	115/230	1550*	CW LE*	13"

Accessories for Azure® Watt Motor

MARS NO.	DESCRIPTION
08504	Software Kit for Adjusting Speed and Rotation

*Rotation is reversible, and speed is adjustable from 600 - 2000 RPM with optional software kit (MARS No. 08504)
 **Estimated energy savings based on replacement of a 9W shaded pole evaporator fan motor with Azure® at \$0.11/kWh. \$33 savings is based solely on the reduction of power consumption. An additional savings of approximately 40% will result from the reduction of the refrigeration load due to Azure®'s lower operating temperature.

Unit Bearing Motors - Shaded Pole

3 1/2 inch dia. MARS SERIES 050

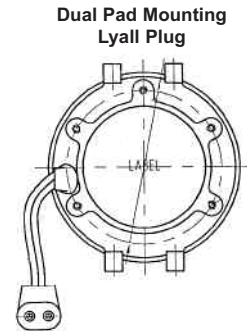
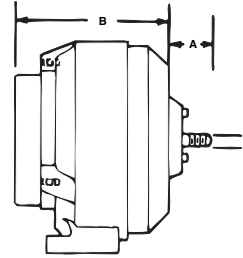


51 Frame Unit Bearing Cast Iron Motors

MARS 51 frame motors are used on refrigerators, freezers, food & beverage coolers, vending machines, display cases, and many other fan duty applications.

Features:

- Cast iron construction
- Packed with vibration dampener, speed nut & screws
- Shaded pole, single phase
- Fan duty, continuous, air over
- Impedance protected
- Accessories on page 33
- Class "B" insulation • 60/50 Hertz



1000 RPM—1/4-20 Threaded Shaft

MARS NO.	WATTS	ROT OSE	VOLTS	AMPS	LEAD LENGTH	DIMENSIONS		
						A	B	C
05111 ⁽¹⁾	2.5	CW	115	0.30	26"	0.66	2.64	1/4

1550 RPM—1/4-20 Threaded Shaft - Dual Pad Mounting - Lyall Plug

MARS NO.	WATTS	ROT OSE	VOLTS	AMPS	LEAD LENGTH	DIMENSIONS		
						A	B	C
05211 ⁽¹⁾	4	CW	115	0.33	24"	0.66	2.64	1/4
05212 ⁽¹⁾	4	CCW	115	0.33	24"	0.66	2.64	1/4
05221 ⁽¹⁾	4	CW	230	0.19	24"	0.66	2.64	1/4
05222 ⁽¹⁾	4	CCW	230	0.19	24"	0.66	2.64	1/4
05311	6	CW	115	0.46	24"	0.66	3.14	1/4
05312	6	CCW	115	0.46	24"	0.66	3.14	1/4
05411	9	CW	115	0.62	24"	0.66	3.14	1/4
05412	9	CCW	115	0.62	24"	0.66	3.14	1/4
05421	9	CW	230	0.33	24"	0.66	3.14	1/4
05422	9	CCW	230	0.33	24"	0.66	3.14	1/4
05811 ⁽²⁾	16	CW	115	0.95	24"	0.66	3.34	1/4
05812 ⁽²⁾	16	CCW	115	0.95	24"	0.66	3.34	1/4
05821 ⁽²⁾	16	CW	230	0.48	24"	0.66	3.34	1/4
05822 ⁽²⁾	16	CCW	230	0.48	24"	0.66	3.34	1/4

1500 RPM—1/4-20 Threaded Shaft

MARS NO.	WATTS	ROT OSE	VOLTS	AMPS	LEAD LENGTH	DIMENSIONS		
						A	B	C
05911 ⁽²⁾	25	CW	115	1.1	22"	0.50	3.50	1/4
05921 ⁽²⁾	25	CW	230	0.60	22"	0.50	3.50	1/4
05711 ⁽²⁾	35	CW	115	1.4	22"	0.50	3.50	1/4
05721 ⁽²⁾	35	CW	230	0.70	22"	0.50	3.50	1/4

1500 RPM—Smooth Shaft

MARS NO.	WATTS	ROT OSE	VOLTS	AMPS	LEAD LENGTH	DIMENSIONS		
						A	B	C
05511 ⁽²⁾	50	CW	115	1.7	22"	1.50	4.50	3/8
05521 ⁽²⁾	50	CW	230	0.85	22"	1.50	4.50	3/8

1550 RPM—1/4-20 Threaded Shaft - Dual Pad Mounting - Lyall Plug

MARS NO.	WATTS	ROT OSE	VOLTS	AMPS	LEAD LENGTH	DIMENSIONS		
						A	B	C
05614	4	CW	115	0.27	26"	0.66	2.64	1/4
05616	6	CW	115	0.40	26"	0.66	3.14	1/4
05619	9	CW	115	0.50	26"	0.66	3.14	1/4
05626	16	CW	115	1.0	24"	0.66	3.34	1/4





MARS Shaded Pole Motors

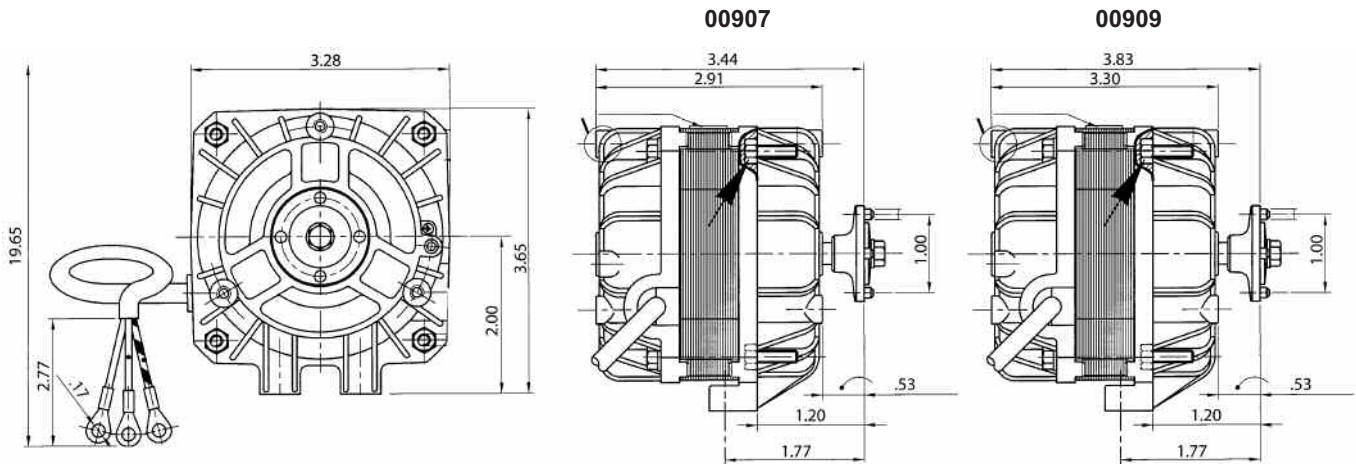
MARS shaded pole motors are widely used in the HVAC & Refrigeration industry. These motors are suitable for all angle operation and have multiple mounting features and are used in industrial and commercial refrigeration for condensing and evaporating units, ventilating units, freezers, walk-in and reach-in coolers, food and beverage coolers and many other fan duty applications.

Features:

- All angle, sleeve bearing
- Single speed
- Output 9 and 16 watts
- Totally enclosed
- Hardware included: screws and nuts
- Continuous air over
- 3 core cable equipped with ring fast-on terminals

Specifications:

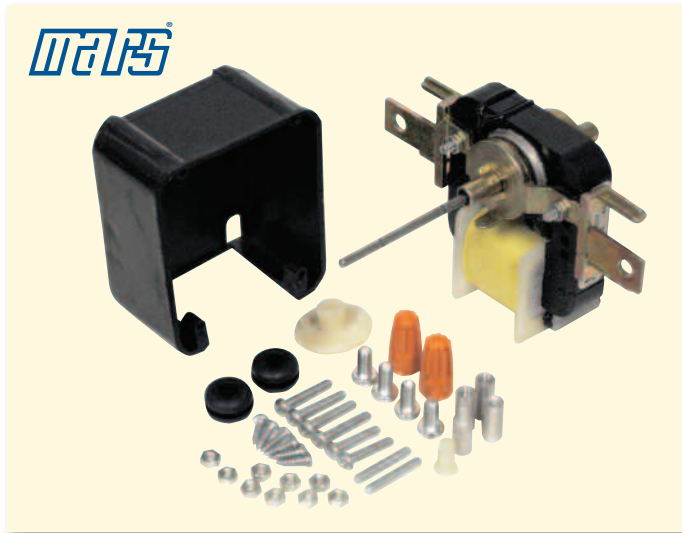
- Class "B" insulation
- 60 Hz
- Thermal overload protected
- UL approved



MARS NO.	WATTS	ROT SE	HP	VOLTS	AMPS	RPM
00907	9	CCW	1/83	115	0.50	1550
00909	16	CCW	1/47	115	0.70	1550

C-Frame - Shaded Pole Motors

MARS SERIES **909**



Super-Fit™ 3000 RPM Replacement Motors*

The MARS 90999 Super-Fit™ replacement fan motor is designed to replace virtually any refrigerator evaporator fan motor.

The MARS 90999 motor incorporates a unique new system which duplicates any OEM mounting quickly and easily. The rotor is reversible in the field for either clockwise or counterclockwise rotation.

In addition the MARS 90999 motor has the power to perform in even the largest refrigerators.

The MARS 90999 Super-Fit™ motor comes complete with mounting accessories and hardware.

*U.S. Patent

Specifications:

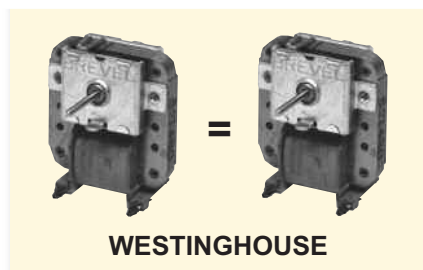
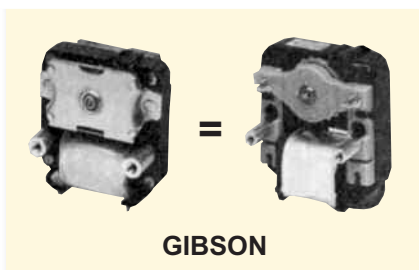
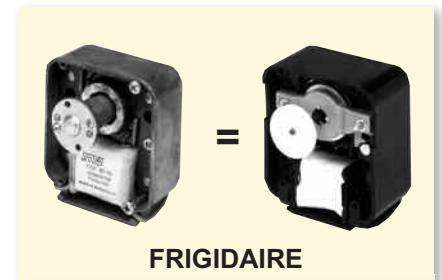
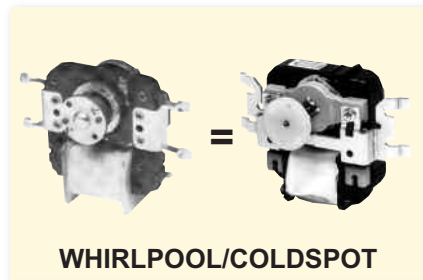
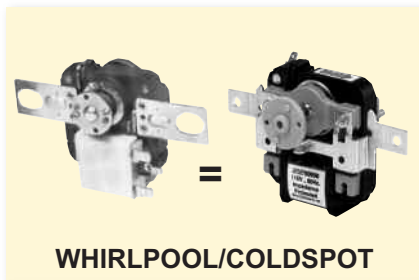
- Electrical rating: 90999, 115V, 50/60 Hertz
90998, 220V, 50/60 Hertz
- Overload protection: impedance protected
- Speed: 3000 RPM
- Shaft: 1/8 inch diameter with adaptors for 3/16 inch and hubless fans

Features:

- Reversible rotation
- Duplicates any OEM motor
- Break-off shaft
- Easy-to-use, fewer parts to assemble than competitive motors
- Stock one motor—save on inventory
- Complete with accessories and instructions

MARS NO.	DESCRIPTION	VOLTS
90999	"Super-Fit" motor with accessories	115V, 50/60 Hz
90998	"Super-Fit" motor with accessories	220V, 50/60 Hz

Replaces these popular motors...and *hundreds more!*





Super-Fit™ 3000 RPM Commercial Replacement Motor*

MARS 90970 Super-Fit™ commercial evaporator fan motor is the most versatile, easy-to-use, heavy-duty replacement evaporator fan motor available.

MARS 90970 is the first motor of this type with a dual voltage coil so you can stock one motor for both 115 volt and 230 volt applications. The unique system of slide locator screws lets you match OEM mountings quickly and easily.

The reversible 90970 features rugged, die cast bearing housings with self-aligning bearings and generous oil reservoir. The break-off shaft has adaptors to fit 1/8, 3/16, 1/4, 5/16 inch bores and hubless fan blades.

*U.S. Patent

Features:

- Dual voltage coil, 110-120/208-240 VAC
- 50/60 Hertz • mechanically reversible

Specifications:

- Electrical: 110-120/208-240 VAC; 50/60 Hertz
- Protection: thermal overload protected
- HP: 1/50 • RPM: 3000

MARS 90970 Replaces:

ACME MIAMI	GEM	UNI-LINE ROBERT SHAW
750	EM675	14011
7502	EM675	14019
780	EM680	
	EM683	

3000 Rpm – Mechanically Reversible

MARS NO.	HP	AMPERAGE	STACK HT. IN.	SHAFT	VOLTS
90970	1/50	1.33	.75	2.174 x .1875	110-120/208-240



Super-Fit™ 3000 RPM Replacement Motor Kit With Fan Blades

The MARS 90971 Super-Fit™ replacement motor kit with fan blades is designed to provide all the material necessary to replace virtually any existing application that requires a 3/8", 1/2", or 5/8" stack motor.

The motor features a specially designed recirculating oil system for long life.

Each kit includes MARS Super-Fit™ hardware plus a 4" diameter fan blade and a 5 1/2" diameter fan blade.

Features:

- Sleeve bearings
- All angle mount
- UL and CSA recognized
- Impedance protection
- Mechanically reversible
- Recirculating oil system

Specifications:

- Class "A" insulation
- 3000 RPM
- 60 Hz

Cross Reference:

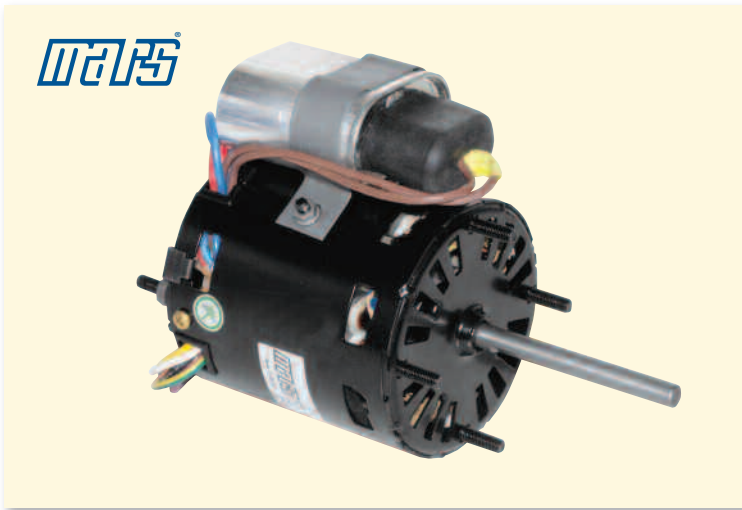
MARS NO.	ACME-MIAMI	GEM	UNI-LINE/ROBERTSHAW	SUPCO
90971	600 700 710 AM-4670	EM670	33-670 (14001)	SM-670

3000 RPM – Mechanically Reversible

MARS NO.	HP	VOLTS	AMPS	SHAFT	STACK
90971	1/130	120	0.41	1.42" x 3/16"	5/8"

Refrigeration Fan Motors – PSC

3.3 inch dia. MARS SERIES **099**



MARS 3.3 Inch Commercial Refrigeration Multi-Horsepower Motors

These motors replace hundreds of OEM shaded pole evaporator fan motors found in Bohn, Nutone, Chandler, Larkin, Kramer, Climate Control, McQuay, Heatcraft and reduce truck stock costs.

These PSC type motors deliver more power and lower amp draw compared to shaded pole.

Features:

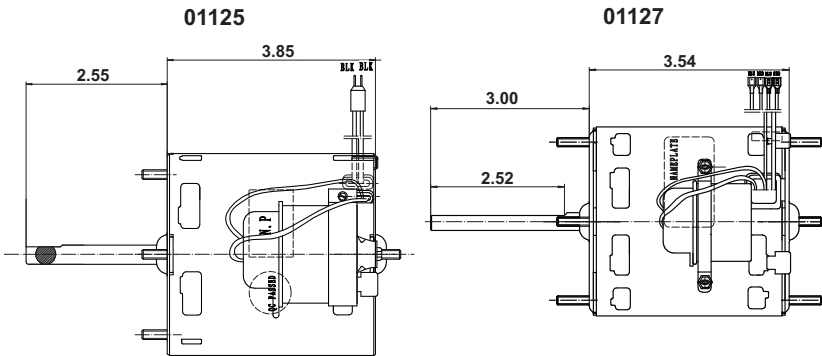
- Sleeve bearing
- Mounting - extended thru-bolt with nuts
- Low temp lubricant
- Capacitor included
- Open ventilation

Specifications:

- Class “B” insulation
- 60 Hz
- Thermal overload protected
- Single speed

Replaces 12 Motor Ratings:

1/12HP	CW or CCW	115V or 230V
1/15HP	CW or CCW	115V or 230V
1/20HP	CW or CCW	115V or 230V



Cross Reference

MARS No.	Century/ AO Smith	US Motors/ Emerson	Fasco	GE/Genteq	OEM	Packard
01125	9720A	9656, 8658, 9664	7190-0442, D1125		253005101, 25309101, 7071061, 55034LS, 5034L, 5008SS and 50085 S58-486, 5008TS, 5008T, 5034MS and 5034M S58-776	41125
01127	9721	9650, 9651, 9652, 9653, 9656, 9662, 9664	D1101, D1103, D1122, D1123, D1124, D1125, D1126, D1127, D1152, D1154, PD1125, PD1127, 7163-2113, 7163-3371 7190-0442, 7190-2084 7190-2255, 7190-2285 7190-2969	5KSM59ES2001 5KSM59JSK143S 5KSM59JS5036S 5KSM59LS2262AS	25308601, 25309101, 2531194, 2531195 7071061	49101

1550 RPM

MARS NO.	HP	VOLTS	ROTATION	AMPS	CAP INCLUDED	SHAFT LENGTH AND DIAMETER
01125	1/12, 1/15, 1/18	208-230	CW LE	0.56/0.50	4 MFD 370V	2.55 x 5/16
01127	1/12, 1/15, 1/20	115/230	REV	1.1/0.60	7.5 MFD 370V	3.00 x 5/16





MARS Super-Fit™ 3.3 Inch Commercial Refrigeration Evaporator Fan And Blower Motors

Application

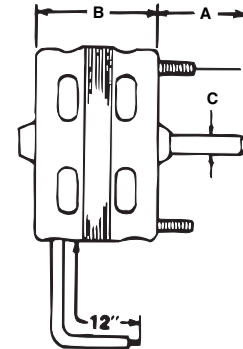
Can be used to replace virtually all popular 3.3" dia. commercial refrigeration evaporator fan motors.

Features:

- Adaptable to front or rear mount
- All angle operation
- Specially selected low temp. oil
- Full flatted black oxide shafts
- U.L. and C.S.A. recognized thermal protection
- Consult airMARS section of the MARS Component Catalog for fan blades & accessories

Specifications:

- Single phase, 60 Hertz
- Thermal overload protected
- 12 inch leads



Cross Reference

MARS No.	Century/AO Smith	Fasco	Magnetek	Packard	RMR
09916	AO126, AO127	D532	28,29		RR-1106
09917	AO132, AO133	D132	572, 574, 30, 31	40132	RR-1107
09927	AO188, AO189	D188	575	40188	RR-4107

1550 RPM

MARS NO.	HP	VOLTS	AMPS	ROT OLE	A	DIMENSIONS B	C
09916	1/30	115	1.2	CW	2.50	2.96	5/16
09917	1/20	115	1.7	CW	2.50	2.96	5/16
09927	1/20	208/230	0.96	CW	2.50	2.96	5/16

Refrigeration Fan Motors - Shaded Pole

3.3 inch dia. MARS SERIES **099**



MARS One-On-One™ 3.3 Inch Commercial Refrigeration Evaporator Fan And Blower Motors

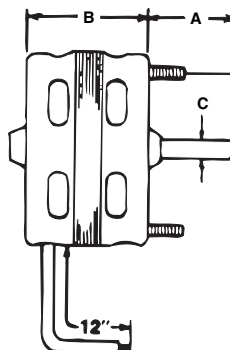
These motors feature original OEM-type plugs, wiring harness and conduit box (where appropriate).

Features:

- Sleeve bearing
- Original OEM-type mounting
- Original OEM-type wiring
- Specially selected low temp oil
- Full flatted black oxide shafts

Specifications:

- Class "B" insulation
- 60 Hz
- Thermal overload protected
- Single phase



Bohn Applications / With Lyall Plug

MARS NO.	HP	RPM	VOLTS	AMPS	ROT OLE	DIMENSIONS		
						A	B	C
09930	1/20	1550	115	1.7	CW	3	3	5/16
09931	1/15	1550	230	1.1	CW	3	3.5	5/16
09938	1/12	1400	230	0.55	CW	2.6	4	5/16

1550 RPM – Larkin Applications / With Lyall Plug

MARS NO.	HP	VOLTS	AMPS	ROT OLE	DIMENSIONS		
					A	B	C
09932	1/20	115	1.7	CCW	2.25	2.75	5/16
09933	1/20	208/230	1.0	CCW	2.25	3	5/16

1550 RPM – McQuay Applications

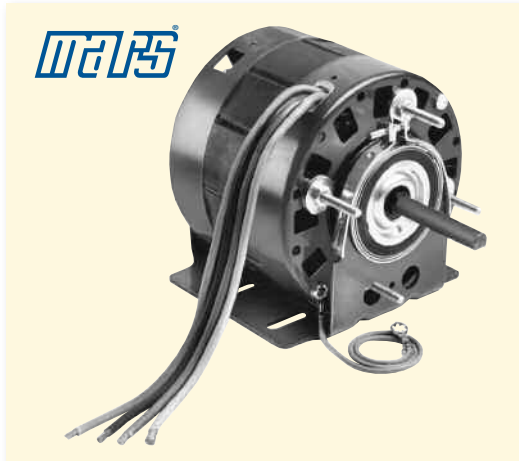
MARS NO.	HP	VOLTS	AMPS	ROT OLE	DIMENSIONS		
					A	B	C
09934	1/15	115/230	2.1/1.1	CW	2.5	3.5	5/16





Refrigeration Fan Motors - Shaded Pole

5 inch dia. MARS SERIES **106**



MARS 21/29 Frame Commercial Refrigeration Replacement Motors

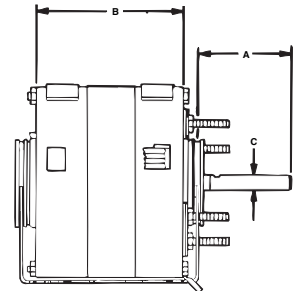
MARS 21/29 frame refrigeration replacement motors have been designed to provide the contractor with tremendous versatility. Dual voltage and mechanical reversibility make these ideal truck stock for today's busy refrigeration contractor.

Features:

- All angle sleeve bearings
- 115/208-230 volt
- Simple mechanical reversibility, lead exit provided at both ends
- Extended studs with double nuts
- Mounting washers included
- 2 1/4 inch resilient rings for base mounting
- CCW (lead end) rotation as factory assembled
- Base and clamps included

Specifications:

- Single phase, 50/60 Hertz
- Thermal overload protected
- 30" color coded leads
- 3/8" shaft diameter with 1/2" adapter included



Functional Equivalent to:		
	10611	10615
GE	2331/2332 2341/2342	2131/2132 2141/2142 2231/2232 2241/2242
Magnetek/ Univ	610/611	614/615 612/613
Fasco	D484/D485	D480/D481 D482/D483
A.O.Smith		326P118/326P119 RF4400/RF4401
Emerson	F1468	F1469 F1470

1550 RPM – Mechanically Reversible

MARS NO.	HP	VOLTS	LE ROT	F.L.A.		DIMENSIONS	
				115/208-230V	A	B	C
10611	1/20	115/230	CCW	3.8/1.9	2.25	4.92	3/8
10615	1/10	115/230	CCW	4.0/2.0	2.25	4.92	3/8

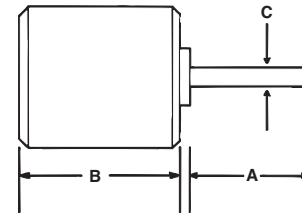
MARS Technical Help Line
800-678-9888
 M-F 8 am – 5 pm EST.



One-On-One™ Direct Replacement Motors



One-On-One™ Direct Replacement Motors



5 1/2 inch diam., totally enclosed, ball bearing, capacitor required 5 MFD @ 370V (MARS No. 12005, 12905), CW OSE

Replaces: Carrier HC33GE233

MARS NO.	HP	VOLTS	RPM/SPEEDS	ROT OSE	AMPS	DIMENSIONS		
						A	B	C
10234	1/10	208/230	1100/1	CW	0.77	1.8	3.8	1/2



5 1/2 inch diam., totally enclosed, ball bearing, capacitor required 5 MFD @ 370V (MARS No. 12005, 12905), CCW OSE

Replaces: Goodman 0131M00019P

MARS NO.	HP	VOLTS	RPM/SPEEDS	ROT OSE	AMPS	DIMENSIONS		
						A	B	C
10230	1/4	208/230	1100/1	CCW	1.26	3	4.1	1/2



5 1/2 inch diam., totally enclosed, ball bearing, capacitor required 5 MFD @ 370V (MARS No. 12005, 12905), CCW OSE

Replaces: Goodman 0131M00060

MARS NO.	HP	VOLTS	RPM/SPEEDS	ROT OSE	AMPS	DIMENSIONS		
						A	B	C
10232	1/6	208/230	810/1	CCW	1.1	3	4.1	1/2



5 1/2 inch diam., totally enclosed, ball bearing, capacitor required 5 MFD @ 370V (MARS No. 12005, 12905), CCW OSE

Replaces: Goodman 0131M00294

MARS NO.	HP	VOLTS	RPM/SPEEDS	ROT OSE	AMPS	DIMENSIONS		
						A	B	C
10233	1/8	208/230	1050/1	CCW	0.70	2.5	4.1	1/2



5 1/2 inch diam., totally enclosed, ball bearing, capacitor required 20 MFD @ 370V (MARS No. 12014, 12914), CW OSE

Replaces: Goodman 0131F00022

MARS NO.	HP	VOLTS	RPM/SPEEDS	ROT OSE	AMPS	DIMENSIONS		
						A	B	C
10594	1/2	115	1130/4	CW	8.1	4	5.1	1/2



5 1/2 inch diam., totally enclosed, ball bearing, capacitor required, 5 MFD @ 440V (MARS No. 12029, 12929, 14029), CCW OSE

Replaces: For use with Coleman and Evcon Equipment

MARS NO.	HP	VOLTS	RPM/SPEEDS	ROT OSE	AMPS	DIMENSIONS		
						A	B	C
10570	1/3	575	850/1	CCW	0.66	2.5	6.6	1/2

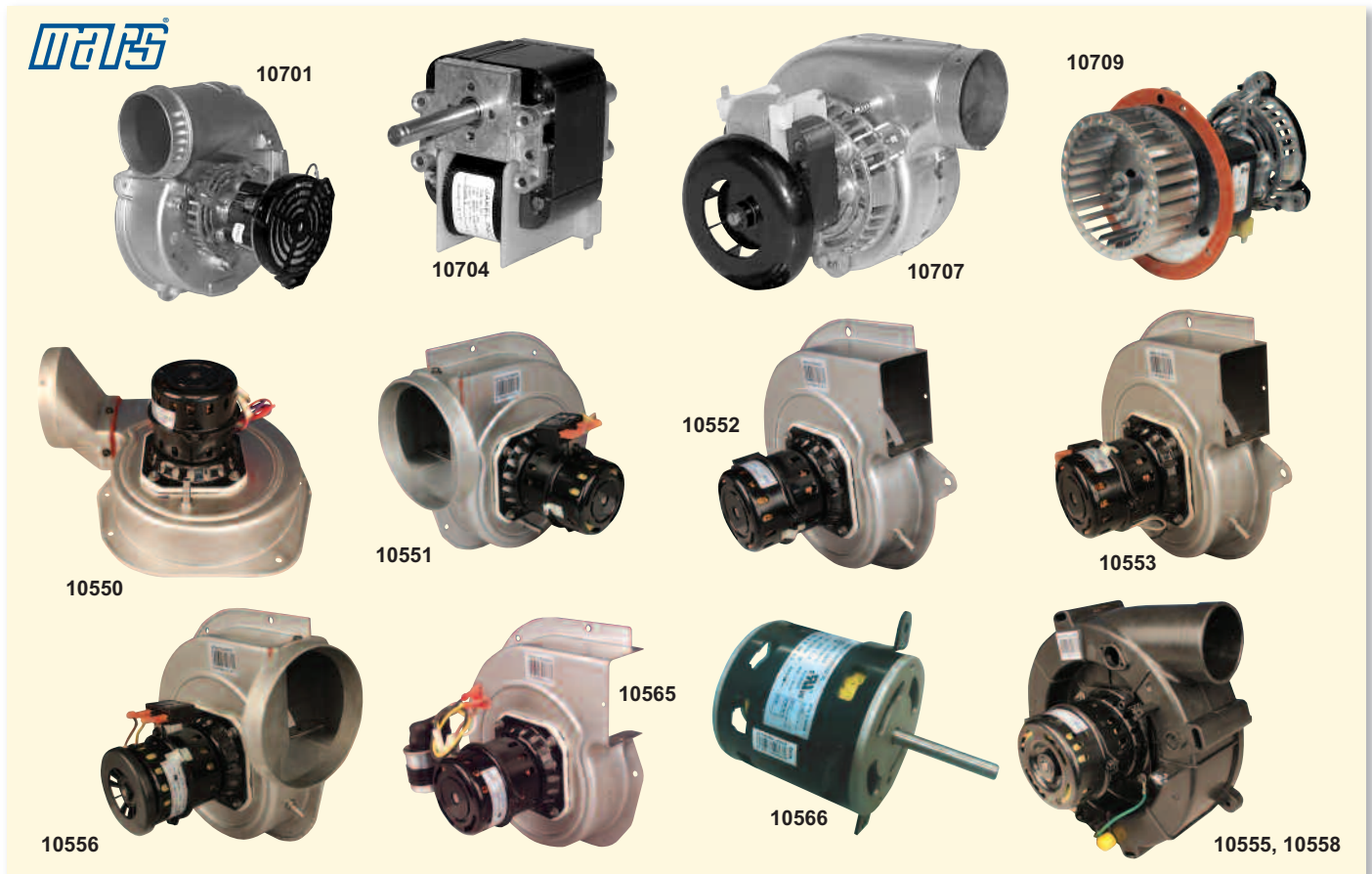


5 1/2 inch diam., totally enclosed, ball bearing, capacitor required, 10 MFD @ 440V (MARS No. 12032, 12932, 14032), CCW OSE

Replaces: For use with Coleman and Evcon Equipment

MARS NO.	HP	VOLTS	RPM/SPEEDS	ROT OSE	AMPS	DIMENSIONS		
						A	B	C
10571	3/4	575	1100/1	CCW	1.35	3.5	5.7	1/2





MARS draft inducer blower assemblies are designed and manufactured to serve as drop-in, exact replacements.

Specifications:

- C-Frame • Single Speed • 60 Hz
- Thermal protected, air over
- Single phase

Draft Inducer Blowers

MARS NO.	OEM	OEM NO.	APPLICATION	HP	VOLTS	AMPS	RPM	BEARING TYPE	CAP INCLUDED
10701	Rheem	70-24157-03	80+ Furnace	1/30	120	1.71	3400	Ball	–
10566	Carrier	HC27Q118	80 + Furnace	1/4	115	0.38	3030	Ball	5MFD/370
10704	Carrier	HC21ZE117	80+ Furnace	1/22	115	1.9	–	Ball	–
10709	Carrier	HC24HE230	80+ Furnace	1/40	208/230	1.0	–	Ball	–
10707	Lennox	88K8401	80+ Furnace	1/60	120	1.3	3000	Ball	–
10556	Nordyne	622567	80+ Furnace	1/33	115	0.43	3000	Ball	4MFD/250V
10558	Nordyne	622302	90+ Furnace	1/31	115	0.46	3300	Ball	6MFD/250V
10550	Goodman	0131G00007	80+ Furnace	1/50	230	0.24	3000	Ball	2MFD/370V
10551	Goodman	0131G00009	80+ Furnace	1/32	230	0.24	3000	Ball	2MFD/370V
10552	Goodman	0131M00121	80+ Furnace	1/50	230	0.22	3000	Ball	2MFD/370V
10553	Goodman	0131M00002P	80+ Furnace	1/50	115	0.40	3000	Ball	6MFD/250V
10555	Goodman	0271F00126	90+ Furnace	1/32	115	0.46	3150/2950	Ball	6MFD/250V
10563	Trane	D965130P01	80+ Furnace	1/39	230	0.22	2800/1500	Ball	2MFD/370V
10564	Trane	D965129P01	80+ Furnace	1/39	230	0.22	2800/1500	Ball	2MFD/370V
10565	Trane	D965128P01	80+ Furnace	1/34	230	0.24	3000	Ball	2MFD/370V

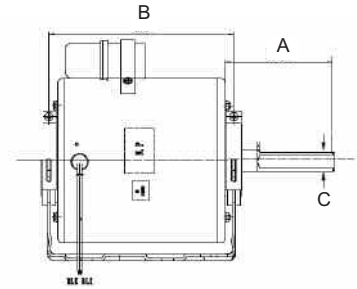


10228

OEM Direct Replacement Motors For Copeland

Specifications:

- Class "B" insulation
- 50/60 Hz
- Single phase
- Single speed
- Thermal overload protected
- Continuous air over

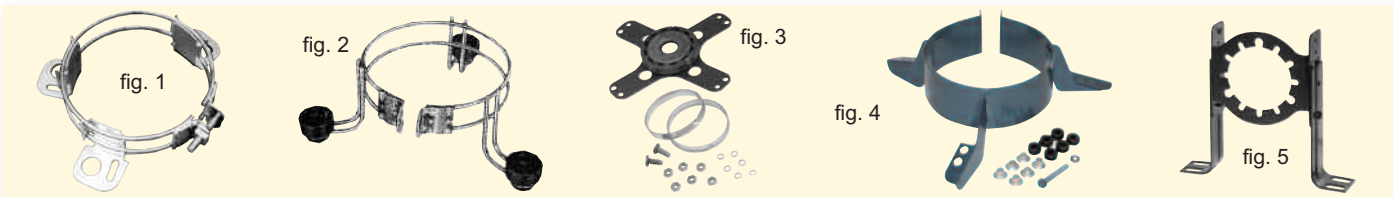


Cross Reference

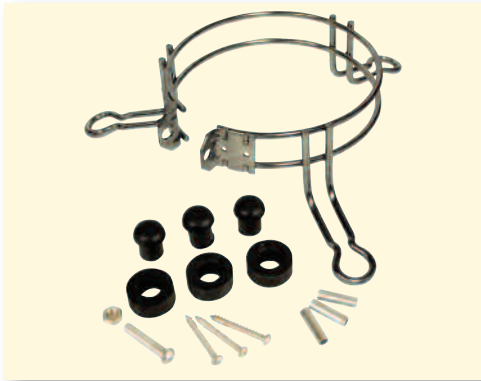
MARS No.	Copeland	GE/Genteq	US Motors/Emerson	Packard
10227	050-0108-00	5KCP32KG2598, 5KCP32KG175 5KCP32KG221	6127, K55HXECE2645	
10228	050-0251-00, 998-0251-00		6128, K55HSJNG-2974	40251
10229	050-0250-00, 950-0250-00	03242, 5KCP39EG755S	6129, K55HXJZJ-3126	40250
10264	050-0238-00	5KCP-39GG357S	6124, K55BZY-1439	
10265	050-0265-00		K55PGP5104	40265

MARS NO.	HP	VOLTS	ROTATION OSE	AMPS	RPM	CAP INCLUDED	ENCLOSURE	DIMENSIONS		
								A	B	C
10227	1/3	230	CW	2.2	1625	4MFD/370V	TEAO	1.75	5.87	1/2
10228	1/6	208-230	CW	1.1	1550	3MFD/370V	OAO	3.07	3.69	1/2
10229	1/4	208-230	CW	1.5	1625	5MFD/370V	OAO	3.07	4.32	1/2
10264	1/4	230	CW	2.1	1550	5MFD/370V	ODP	3.00	4.2	1/2
10265	1/6	208-230	Rev	1.1	1550	3MFD/370V	OAO	3.00	3.73	1/2

Mounting Brackets



MARS NO.	USED ON	DESCRIPTION	FIG. NO.
08020	39 frame and 5½ in. diam. motors	adj. lug mounting bracket fits triangular bolt patterns of 6⅛ in. to 6⅑/16 in. bolt to bolt (¼ in. x 7/8 in. and ¾ in. x 1⅜ in. knockouts)	1
08021	5½ in. fixed motor mtg. bracket with grommets	for mounting blower motor with large wheel opening fits any 5½ in. diameter motor	2
08024	5 in. fixed motor mtg. bracket with grommets	for mounting blower motor with large wheel opening fits any 5 in. diameter motor	2
08095	39 frame and 5½ in. diam. motors	mounting adapter kit for base mounting 5½ in. diameter motors with flat end shields	3
08049	29 and 39 frame motors, 5 in. motors	Torsion-Flex mounting adapter kit for 9 in. and 10 in. blowers	4
08050	48 frame, 5⅝ in. and 5½ in. diam. motors	Torsion-Flex mounting adapter kit for 9 in. and 10 in. blowers	4
08004	51 frame motors	shaft height adjustable 4⅛ in. to 5⅜ in.	5



MARS NO.	DESCRIPTION
08025	10" Bolt Pattern
08026	11" Bolt Pattern

Premium Belly Bands

Applications:

Residential HVAC, Direct Drive Blowers

- Welded 3-ring bracket
- Anodized steel rod construction
- Includes 3 sets of rubber grommets, 3 sheet metal screws, 3 galvanized steel sleeves, 1 bolt, 1 nut

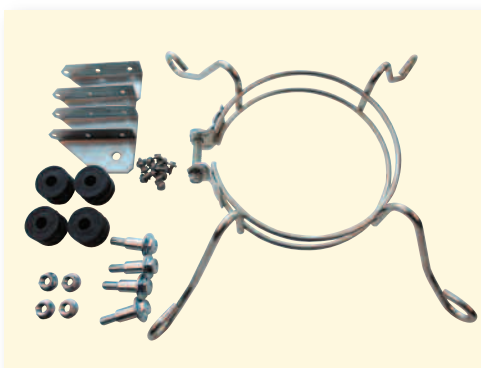


MARS NO.	DESCRIPTION
08027	13" Bolt Pattern

Applications:

Residential HVAC, Direct Drive Blowers

- Welded 4-ring bracket
- Anodized steel rod construction
- Includes 4 sets of rubber grommets, 4 sheet metal screws, 4 galvanized steel sleeves, 1 bolt, 1 nut



MARS NO.	DESCRIPTION
08028	Rheem Adapter

Rheem Adapter Belly Bands

Applications:

Rheem Blower Assemblies

This kit allows the use of standard 5.5" blower motors (without Rheem mounting holes) in Rheem original equipment blower applications.

- Welded 4-ring bracket
- Anodized steel rod construction
- Includes bracket, blower housing tabs, hardware & grommets

Cross Reference



MARS No.	Description	Century / AO Smith	US Motors/ Emerson	Fasco	GE/ Genteq	Marathon	Packard	Nordyne/ Partners Choice	Rheem/Ruud Protec	Carrier/ Totaline RCD	Wagner	York Source 1	ROTOM
Condenser Fan													
10727	1/6 HP, 208-230 V, 1075 RPM	FSE1016S	1859	D917	3727	X411	43727	01-0160	W51-16CJA1-01	P257-8727	WG840727	S1-FHM3727	-
10728	1/4 HP, 208-230 V, 1075 RPM	FSE1026S	1860	D909	3728	X412	43728	01-0161	W51-14CJA1-01	P257-8728	WG840728	S1-FHM3728	-
10729	1/3 HP, 208-230 V, 1075 RPM	FSE1036S	1861	D908	3729	X413	43729	01-0162	W51-13CJA1-01	P257-8729	WG840729	S1-FHM3729	-
10730	1/2 HP, 208-230 V, 1075 RPM	FSE1056S	1862	D907	3730	X414	43730	01-0163	W51-12CJA1-01	P257-8730	WG840730	S1-FHM3730	-
10731	3/4 HP, 208-230 V, 1075 RPM, B/B	FSE1076S	1868	D933	3731	-	43731	01-0164	51-42534-19	P257-8731	WG840731	S1-FHM3731	-
10403	1/6 HP, 208-230 V, 825 RPM	FSE1018SF	1873	D798	3403	X465	60825	0165	51-23055-12	-	-	-	-
10404	1/4 HP, 208-230 V, 825 RPM	FSE1028SF	1874	D934	3404	-	40825	0166	51-23054-13	-	WG840204	S1-FHM3204	R22445
10405	1/3 HP, 208-230 V, 825 RPM	FSE1038SF	1875	D796	3405	X451	30825	0167	-	P257-8026	WG840205	S1-FHM3205	R22345
10746	1/2 HP, 208-230 V, 825 RPM	FSE1058SF	1870	D713	3746	X452	-	0168	-	-	-	-	R22245
10203	1/6 HP, 208-230 V, 825 RPM, B/B	FE1018SF, FSE1018SF	-	D793	3203	X465	3203	-	-	-	-	-	CF-816
10204	1/4 HP, 208-230 V, 825 RPM, B/B	FE1028SF, FSE1028SF	1874	-	3204	X450	40825	-	-	-	-	S1-FHM3204	CF-814
10205	1/3 HP, 208-230 V, 825 RPM, B/B	FE1038SF, FSE1038SF	1875	-	3205	X451	30825	-	-	-	-	S1-FHM3205	-
10747	1/2 HP, 208-230 V, 825 RPM	F1058	-	-	3736	X452	-	-	-	-	-	-	-
10732	1/6 HP, 208-230 V, 1075 RPM, B/B	-	2246	-	3726	X427	-	-	-	-	-	-	CF-3726
10733	1/4 HP, 208-230 V, 1075 RPM, B/B	F1026S, FE1026SF, FSE1026SV1	1876	D7909	3732	X428	51876	-	-	-	-	-	CF-3732
10734	1/3 HP, 208-230 V, 1075 RPM, B/B	F1036S, FE1036S	1877	D7908	3733	X413	51877	-	-	-	-	-	CF-3733
10735	1/2 HP, 208-230 V, 1075 RPM, B/B	F1056S, FE1056SF	1878	D7907	3734	X414	51878	-	-	-	-	-	CF-3734
10736	3/4 HP, 208-230 V, 1075 RPM, B/B	F1076SF, FS1076S	1879	-	3735	-	51879	-	-	-	-	-	CF-3735
10327	1/6 HP, 208-230 V, 1075 RPM	-	8661	D718	3327	-	-	-	W51-16CJA1-01	-	-	-	-
10328	1/4 HP, 208-230 V, 1075 RPM	FS1026S	3851	D823	3328	-	-	-	W51-14CJA1-01	-	-	-	-
10329	1/3 HP, 208-230 V, 1075 RPM	FS1036S	6880	D748/D749	3329	-	-	-	W51-13CJA1-01	-	-	-	-
10330	1/2 HP, 208-230 V, 1075 RPM	FS1056S	3852	D745/D804	3330	-	-	-	W51-12CJA1-01	-	-	-	-
10331	3/4 HP, 208-230 V, 1075 RPM	FS1076S	3097	D929	3331	-	-	-	-	-	-	-	-
Multi-Horsepower Condenser Fan													
10458	1/6, 1/5, 1/4, 1/3, 1075 RPM, 208-230 V, WIZ, B/B	ORM5458	5458	-	3458	-	-	-	W51-MHCJA1-01	-	-	-	R22402
10459	1/8, 1/6, 1/5, 1/4, 1/3, 825RPM, 208-230 V, WIZ, B/B	ORM5488B	5464	-	3459	-	-	-	-	-	-	-	-
10465	1/6, 1/5, 1/4, 1/3, 1075 RPM, 208-230 V, B/B	FE6000	5462	D2827	3465	X072	-	01-0695	51-23053-21	P257-E5462	WG840465	S1-FHM3465	R22605
10468	1/5, 1/4, 1/3, 1/2, 1075 RPM, 208-230 V, B/B	FE6002	5465	-	3468	X076	-	01-0697	-	P257-E5465	WG840468	S1-FHM3468	R22602
10469	1/6, 1/5, 1/4, 1/3, 825 RPM, 208-230 V, B/B	FE6001	5464	D2826	3469	-	-	01-0696	51-20760-11	P257-E5464	WG840469	S1-FHM3469	R22601

Disclaimer: Every effort has been made to insure the accuracy of motor data and cross reference information. Design changes may result in different operating characteristics or dimensional changes from one manufacturer to another. Therefore, MARS cannot accept responsibility for the ultimate selection. For additional information, please contact MARS.

Note: B/B – Ball Bearing
* 2 Speed Motor





Cross Reference

MARS No.	Description	Century / AO Smith	US Motors/ Emerson	Fasco	GE/ Genteq	Marathon	Packard	Nordyne/ Partners Choice	Rheem/Ruud Protech	Carrier/ Totaline RCD	Wagner	York Source 1	ROTM
Direct Drive													
10583	1/4 HP, 115 V, 1075 RPM	DL1026	1863	D721	3583	X000	43583	01-0169	W51-14BAA3-01	P257-8583	WG840583	S1-FHM3583	DD-3583
10584	1/4 HP, 208-230 V, 1075 RPM	D1026	1971	D725	3584	X001	43584	01-0173	W51-14BJA3-01	P257-8584	WG840584	S1-FHM3584	DD-3584
10585	1/3 HP, 115 V, 1075 RPM	DL1036	1864	D727	3585	X002	43585	01-0170	W51-13BAA3-01	P257-8585	WG840585	S1-FHM3585	DD-3585
10586	1/3 HP, 208-230 V, 1075 RPM	D1036	1972	D923	3586	X003	43586	01-0174	W51-13BJA3-01	P257-8586	WG840586	S1-FHM3586	DD-3586
10587	1/2 HP, 115 V, 1075 RPM	DL1056	1865	D701	3587	X004	43587	01-0171	W51-12BAA3-01	P257-8587	WG840587	S1-FHM3587	DD-3587
10588	1/2 HP, 208-230 V, 1075 RPM	D1056	1973	D703	3588	X005	43588	01-0175	W51-12BJA3-01	P257-8588	WG840588	S1-FHM3588	DD-3588
10589	3/4 HP, 115 V, 1075 RPM	DL1076	8904	D728	3589	X009	43589	01-0172	W51-34BAA3-01	P257-8589	WG840589	S1-FHM3589	DD-3589
10590	3/4 HP, 208-230 V, 1075 RPM	D1076	8905	D729	3590	X010	43590	01-0176	W51-34BJA3-01	P257-8590	WG840590	S1-FHM3590	DD-3590
10591	1 HP, 115 V, 1075 RPM	BDL1106	8906	D712	3595	-	-	-	-	-	WG840595	S1-FHM3595	R6-R42812
10592	1 HP, 208-230 V, 1075 RPM	BD1106	8907	D711	3596	X023	48907	-	-	-	WG840596	S1-FHM3596	R6-R42842
10683	1/4 HP, 115 V, 1075 RPM	FML1026	3783	D1730	3783	-	-	-	-	-	-	-	-
10684	1/4 HP, 208-230 V, 1075 RPM	FM1026	3784	D1733	3784	-	-	-	-	-	-	-	-
10685	1/3 HP, 115 V, 1075 RPM	FML1036	3785	D1731	3785	-	-	-	-	-	-	-	-
10686	1/3 HP, 208-230 V, 1075 RPM	FM1036	3786	D1734	3786	-	-	-	-	-	-	-	-
10687	1/2 HP, 115 V, 1075 RPM	FML1056	3787	D1732	3787	-	-	-	-	-	-	-	-
10688	1/2 HP, 208-230 V, 1075 RPM	FM1056	3788	D1735	3788	-	-	-	-	-	-	-	-
10689	3/4 HP, 115 V, 1075 RPM	FML1076V1	-	-	3789	-	-	-	-	-	-	-	-
10690	3/4 HP, 208-230 V, 1075 RPM	FM1076	-	-	3790	-	-	-	-	-	-	-	-
Multi-Horsepower Direct Drive													
10463	1/6, 1/5, 1/4, 1/3, 1/2 HP, 115 V, 1075 RPM	FDL6001	5460	D2835	3463	X077	-	01-0698	51-23012-41	P257-E5460	WG840463	S1-FHM3463	R43600
10464	1/6, 1/5, 1/4, 1/3, 1/2 HP, 208-230 V, 1075 RPM	FD6000	5461	D833	3464	X073	-	01-0699	51-23022-41	P257-E5461	WG840464	S1-FHM3464	R43601
10466	1/5, 1/4, 1/3, 1/2, 3/4 HP, 115 V, 1075 RPM, B/B	FDL6002	5470	D2832	3466	X074	-	01-0702	51-23017-42	P257-E5470	WG840466	S1-FHM3466	R43602
10467	1/5, 1/4, 1/3, 1/2, 3/4 HP, 208-230 V, 1075 RPM, B/B	FD6001	5471	D2833	3467	X075	-	01-0701	51-23022-41	P257-E5471	WG840467	S1-FHM3467	R43603
10479	1/8, 1/4, 1/3 HP, 825 RPM, 208-230 V	-	5469	-	-	-	-	-	-	-	-	-	-
20538	1/2 HP, 460 V, 1075 RPM, B/B	-	-	-	-	X038	-	-	-	-	-	-	-
20580	1/4, 1/3 HP, 460 V, 1075 RPM, B/B	BDH1036*	-	-	3280	-	-	-	-	-	-	-	M2-R32712
20581	3/4, 1/2 HP, 460 V, 1075 RPM, B/B	BDH1076*	8947	-	3290	-	-	-	-	-	-	-	M2-R32426

Disclaimer: Every effort has been made to insure the accuracy of motor data and cross reference information. Design changes may result in different operating characteristics or dimensional changes from one manufacturer to another. Therefore, MARS cannot accept responsibility for the ultimate selection. For additional information, please contact MARS.

Note: B/B – Ball Bearing
* 2 Speed Motor



Cross Reference



MARS No.	Description	Century/AO Smith	US Motors/Emerson	Fasco	GE/Genteq	Rheem/Ruud Protech	Wagner	York Source 1	ROTOM
SunSlinger Condenser Fan 70°C									
20727	1/6 HP Condenser Fan, 208-230 V, 1075 RPM, B/B	FE1016SF	1859H	-	3726HS	-	WG840727HT	-	-
20728	1/4 HP Condenser Fan, 208-230 V, 1075 RPM, B/B	FE1026SF	1860H	-	3732HS	-	WG840728HT	S1-FHM3728HT	-
20729	1/3 HP Condenser Fan, 208-230 V, 1075 RPM, B/B	FE1036SF	1861H	-	3733HS	-	WG840729HT	S1-FHM3729HT	-
20730	1/2 HP Condenser Fan, 208-230 V, 1075 RPM, B/B	FE1056SF	1862H	-	3734HS	-	WG840730HT	S1-FHM3730HT	-
20731	3/4 HP Condenser Fan, 208-230 V, 1075 RPM, B/B	FE1076SF	1868H	-	3735HS	-	WG840731HT	-	-
20402	1/8 HP Condenser Fan, 208-230 V, 825 RPM, B/B	FE1008SF	1872H	-	3202HS	-	-	-	-
20403	1/6 HP Condenser Fan, 208-230 V, 825 RPM, B/B	FE1018SF	1873H	-	3203HS	-	-	-	-
20404	1/4 HP Condenser Fan, 208-230 V, 825 RPM, B/B	FE1028SF	1874H	-	3204HS	-	WG840204HT	S1-FHM3204HT	-
20405	1/3 HP Condenser Fan, 208-230 V, 825 RPM, B/B	FE1038SF	1875H	-	3205HS	-	WG840205HT	S1-FHM3205HT	-
20746	1/2 HP Condenser Fan, 208-230 V, 825 RPM, B/B	FE1058SF	1870H	-	3747HS	-	-	-	-
20846	1/4 HP Condenser Fan, 460 V, 1075 RPM, B/B, Shaft Up	FEH1026S	3736H	D980	3736HS	51-19704-01	WG840736HT	S1-FHM3736HT	R31710
20847	1/3 HP Condenser Fan, 460 V, 1075 RPM, B/B, Shaft Up	FEH1036S	3737H	D982	3737HS	51-23063-11	WG840737HT	S1-FHM3737HT	R31712
20848	1/2 HP Condenser Fan, 460 V, 1075 RPM, B/B, Shaft Up	FEH1056S	3738H	D802	3738HS	51-20929-01	WG840738HT	S1-FHM3738HT	R31718
20849	3/4 HP Condenser Fan, 460 V, 1075 RPM, B/B, Shaft Up	FEH1076S	3739H	-	3739HS	-	WG840739HT	-	-
SunSlinger Multi-Horsepower Condenser Fan 70°C									
20458	1/6, 1/5, 1/4, 1/3 Multi-HP, Condenser Fan, 1075 RPM, 208-230 V, WIZ, B/B	ORM5458BF	3323H	-	3458HS	-	-	-	-
20459	1/8, 1/6, 1/5, 1/4, 1/3 Multi-HP, Condenser Fan, 825RPM, 208-230 V, WIZ B/B	ORM5488BF	1874H	-	3459HS	-	-	-	-
20465	1/6, 1/5, 1/4, 1/3 Multi-HP, Condenser Fan, 1075 RPM, 208-230 V, B/B	-	5462H	-	3465HS	-	-	S1-FHM3465HT	-
20468	1/5, 1/4, 1/3, 1/2 Multi-HP, Condenser Fan, 1075 RPM, 208-230 V, B/B	ORM5459BF	5465H	-	3468HS	-	-	-	-
20469	1/6, 1/5, 1/4, 1/3 Multi-HP, Condenser Fan, 825 RPM, 208-230 V, B/B	-	5464H	-	3469HS	-	-	S1-FHM3469HT	-
SunSlinger 460V Condenser Fan 70°C									
20859	1/6 HP Condenser Fan, 460 V, 825 RPM, B/B	-	-	-	-	51-101774-06	-	-	R31716
20880	1/4 HP Condenser Fan, 460 V, 825 RPM, B/B	FEH1028S	1880	-	-	51-23064-12	-	-	R22275
20881	1/3 HP Condenser Fan, 460 V, 825 RPM, B/B	-	1881	D960	-	51-100998-26	-	-	R32714
20882	1/2 HP Condenser Fan, 460 V, 825 RPM, B/B	-	1882	D961	-	-	-	-	-
20835	1/6 HP Condenser Fan, 460 V, 1075 RPM, B/B	-	-	-	-	-	-	-	-
20836	1/4 HP Condenser Fan, 460 V, 1075 RPM, B/B	788A, FEH1026SF	3736H	D980	3736	51-19704-01	WG840736HT	S1-FHM3736HT	R31710
20837	1/3 HP Condenser Fan, 460 V, 1075 RPM, B/B	789A, FEH1036SF	3737H	D982	3737	51-23063-11	WG840737HT	S1-FHM3737HT	R31712
20838	1/2 HP Condenser Fan, 460 V, 1075 RPM, B/B	790A, FEH1056SF	3738H	D802	3738	51-20929-01	WG840738HT	S1-FHM3738HT	R31718
20842	3/4 HP Condenser Fan, 460 V, 1075 RPM, B/B	FEH1076SF	3742H	-	3739	-	WG840739HT	-	-
SunSlinger 460V Multi-Horsepower Condenser Fan 70°C									
20478	1/5, 1/4, 1/3, 1/2 Multi-HP, Condenser Fan, 1075 RPM, 460 V, B/B	ORM4658BF	-	-	-	-	-	-	-
20479	1/6, 1/5, 1/4, 1/3, Multi-HP, Condenser Fan, 1075 RPM, 460 V, B/B	ORM4659BF	-	-	-	-	-	-	-
20480	1/6, 1/5, 1/4, 1/3, 1/2 Multi-HP, Condenser Fan, 1075 RPM, 460 V, B/B	-	5480H	-	-	-	-	-	-
20481	3/4, 1/2, 1/3, 1/4 Multi-HP, Condenser Fan, 1075 RPM, 460 V, B/B	-	5481H	-	-	-	-	-	-

Disclaimer: Every effort has been made to insure the accuracy of motor data and cross reference information. Design changes may result in different operating characteristics or dimensional changes from one manufacturer to another. Therefore, MARS cannot accept responsibility for the ultimate selection. For additional information, please contact MARS.

Note: B/B – Ball Bearing





Cross Reference

MARS No.	Description	Century/AO Smith
SunSlinger MAX Condenser Fan 80°C		
20797	1/6 HP Condenser Fan, 208-230 V, 1075 RPM, B/B	-
20798	1/4 HP Condenser Fan, 208-230 V, 1075 RPM, B/B	FE1026SU
20799	1/3 HP Condenser Fan, 208-230 V, 1075 RPM, B/B	FE1036SU
20790	1/2 HP Condenser Fan, 208-230 V, 1075 RPM, B/B	FE1056SU
20791	3/4 HP Condenser Fan, 208-230 V, 1075 RPM, B/B	FE1076SU
20492	1/6 HP Condenser Fan, 208-230 V, 825 RPM, B/B	-
20493	1/4 HP Condenser Fan, 208-230 V, 825 RPM, B/B	FE1028SU
20494	1/3 HP Condenser Fan, 208-230 V, 825 RPM, B/B	FE1038SU
20495	1/2 HP Condenser Fan, 208-230 V, 825 RPM, B/B	FE1058SU
20796	3/4 HP Condenser Fan, 208-230 V, 825 RPM, B/B	-
SunSlinger 460V MAX Condenser Fan 80°C		
20895	1/6 HP Condenser Fan, 460 V, 1075 RPM, B/B	-
20896	1/4 HP Condenser Fan, 460 V, 1075 RPM, B/B	FEH1026SU
20897	1/3 HP Condenser Fan, 460 V, 1075 RPM, B/B	FEH1036SU
20898	1/2 HP Condenser Fan, 460 V, 1075 RPM, B/B	FEH1056SU
20892	3/4 HP Condenser Fan, 460 V, 1075 RPM, B/B	-
20899	1/6 HP Condenser Fan, 460 V, 825 RPM, B/B	
20890	1/4 HP Condenser Fan, 460 V, 825 RPM, B/B	
20891	1/3 HP Condenser Fan, 460 V, 825 RPM, B/B	

MARS No.	Description	Azure®	Century/AO Smith	US Motors/Emerson	GE/Genteq
Azure® Digi-Motor® Direct Drive					
10860	1/5-1/2 HP, Direct Drive ECM, 115/230 V, 1075 RPM, B/B	10800	Comfort Select: CS1056, CSL1056	Rescue Ecotech: 5522ET, 5532ET, 5542ET (1/3HP & 1/2HP), 5552ET (1/2HP), 6631RS (1/2-1/3HP), 6630RS (1/2-1/3HP)	6001, 6002, 6005, 6103E, 6203E, 6105E, 6205E
10861	1/2-1 HP, Direct Drive ECM, 115/230 V, 1075 RPM, B/B	10801	Comfort Select: CS1106, CSL1106	Rescue Ecotech: 5552ET, 5542ET (3/4HP), 6651RS (1HP), 6641RS (3/4HP), 6650RS (1HP), 6640RS (3/4HP)	6003, 6004, 6010, 6107E, 6207E, 6110E, 6210E

MARS No.	Description	Replaces
Azure® Digi-Motor® Condenser Fan		
10874	1/8 - 1/3 HP, Condenser Fan ECM, 208-230 V, 825/1075 RPM	PSC motors 1/8 - 1/3 HP
10870	1/3 - 1/2 HP, Condenser Fan ECM, 208-230 V, 825/1075 RPM	PSC motors 1/3 - 1/2 HP

MARS No.	Description	Regal Beloit/Morrill	Wellington	US Motors
Azure® Digi-Motor® 3.3" Commercial Refrigeration				
10850	1/15-1/25 HP, 3.3" Commercial Refrigeration ECM, 115/230 V, 1550/800 RPM	5100, 5105, 5106, 5101, 5111, 5200, 5201, 5205, 5206, 5211	ECR 85/95	EC5404D, EC5405D

MARS No.	Description	Replaces
Azure® Commercial Refrigeration Watt Motor		
10890	4-25 Watts, Commercial Refrigeration ECM, 115/230 V, 1550 RPM	All standard watt motors up to 25W; Morrill SSC ECM and US Motors Rescue ECM (EC5411, EC5421) up to 25W

Disclaimer: Every effort has been made to insure the accuracy of motor data and cross reference information. Design changes may result in different operating characteristics or dimensional changes from one manufacturer to another. Therefore, MARS cannot accept responsibility for the ultimate selection. For additional information, please contact MARS.

Note: B/B – Ball Bearing



Cross Reference



MARS No.	Description	Century/ AO Smith	US Motors/ Emerson	GE/Genteq	Magnetek	Marathon	Packard	ROTOM
Belted Fan & Blower								
10401	1/4 HP, Belted Fan & Blower, 115 V, 1725 RPM	GF2024, RB2024	2889, 8000	4701	808, 802	B303, B206	45014	BF-4701
10406	1/3 HP, Belted Fan & Blower, 115 V, 1725 RPM	GF2034, RB2034	2888, 8100	4706	922, 805	B305, B207	45013	BF-4706
10408	1/2 HP, Belted Fan & Blower, 115 V, 1725 RPM	GF2054, BF2054	2887, 8200	4708	F681, 811	B208	45012	BF-4708

MARS No.	Description	Century/ AO Smith	US Motors/ Emerson	Fasco	GE/Genteq	Magnetek
21/29 Frame Replacement Commercial Refrigeration						
10611	1/20 HP, Commercial z, 115/230 V, 1550 RPM	-	F1468	D484, D485	2331, 2332, 2341, 2342	610, 611
10615	1/10 HP, Commercial , 115/230 V, 1550 RPM	329P118, 326P119, RF4400, RF4401	F1469, F1470	D480, D481, D482, D483	2131, 2132, 2141, 2142, 2231, 2232, 2241, 2242	614, 615, 612, 613

MARS No.	Description	Century/ AO Smith	US Motors/ Emerson	Fasco	GE/Genteq	Heil Quaker	York Source 1
Super-Fit™ Multi-Horsepower Condenser Fan							
10722	1/8, 1/10, 1/12 HP, Multi-HP, Condenser Fan, 208-230 V, 1075 RPM, B/B	9722	5440*	-	5KCP29DCA323S, 5KCP29ECA328S, 5KCP29DCA329S, 5KCP29FCA322S, 02243, 02248, 02249, 02251	-	17416, 17465, 17483, 17484
10723	1/4, 1/5, 1/6 HP, Multi-HP, Condenser Fan, 208-230 V, 1075 RPM, B/B	9723	5441*, 1901	D1071	5KCP29JCA324S, 5KCP29JCA325S, 5KCP29HCA326S, 5KCP29JCA327S, 5KCP29ECA321S, 02244, 02245, 02246, 02247, 02250	HQ1052662EM	-
10724	1/4, 1/5, 1/6 HP, Multi-HP, Condenser Fan, 208-230 V, 1675 RPM, B/B	9724	-	-	-	-	-

*70°C Heat Shield

MARS No.	Description	Century/ AO Smith	US Motors/ Emerson	Fasco	GE/Genteq	Packard
3.3" Multi-Horsepower Commercial Refrigeration						
01125	1/12, 1/15, 1/18 HP, Evap Fan Motor, 208-230 V, 1550 RPM	9720A	9656, 8658, 9664	7190-0442, D1125	-	41125
01127	1/12, 1/15, 1/20 HP, Evap Fan Motor, 115/230 V, 1550 RPM	9721	9650, 9651, 9652, 9653, 9656, 9662, 9664	D1101, D1103, D1122, D1123, D1124, D1125, D1126, D1127, D1152, D1154, PD1125, PD1127, 7163-2113, 7163-3371 7190-0442, 7190-2084, 7190-2255, 7190-2285, 7190-2969	5KSM59ES2001 5KSM59JSK143S 5KSM59JS5036S 5KSM59LS2262AS	49101

MARS No.	Description	Century/ AO Smith	US Motors/ Emerson	Fasco	Magnetek	Packard	RMR
3.3" Commercial Refrigeration							
09916	1/30 HP, Evap Fan Motor, 115 V 1550 RPM	AO126, AO127	-	D532, D181	28, 29	-	RR-1106
09917	1/20 HP, Evap Fan Motor, 115 V 1550 RPM	AO132, AO133	-	D132, D133	572, 574, 30, 31	40132	RR-1107
09927	1/20 HP, Evap Fan Motor, 208-230 V 1550 RPM	AO188, AO189	-	D188, D189	575	40188	RR-4107
09938	1/30 HP, Evap Fan Motor, 115 V 1550 RPM	-	9656	D1125	-	-	-

Disclaimer: Every effort has been made to insure the accuracy of motor data and cross reference information. Design changes may result in different operating characteristics or dimensional changes from one manufacturer to another. Therefore, MARS cannot accept responsibility for the ultimate selection. For additional information, please contact MARS.

Note: B/B – Ball Bearing





One-On-One™ Replacement Motors

MARS No.	Description	Copeland	US Motors/Emerson	GE/Genteq	Packard
One-On-One™ Replacement Motor for Copeland					
10227	1/3 HP, Condenser Fan, 208-230 V, 1625 RPM	050-0108-00	6127, K55HXECE2645	5KCP32KG2598, 5KCP32KG175	-
10228	1/6 HP, Condenser Fan, 208-230 V, 1550 RPM	050-0251-00	6128, K55HSJNG-2974	5KCP32KG221	40251
10229	1/4 HP, Condenser Fan, 208-230 V, 1625 RPM	050-0250-00	6129, K55HXJZJ-3126		40250
10264	1/4 HP, Condenser Fan, 230 V, 1550 RPM	050-0238-00, 050-0107-01	6124, K55BZY-1439	5KCP39GG357S	-
10265	1/6 HP, Condenser Fan, 208-230 V, 1550 RPM	050-0265-00	K55PGP5104		40265

MARS No.	Description	Carrier
10234	1/10 HP, 208-230 V, 1100/1, CW OSE	HC33GE233
5 1/2 inch diam., totally enclosed, ball bearing, capacitor required 5 MFD @ 370V (MARS No. 12005, 12905), CW Shaft End		

MARS No.	Description	Goodman
10230	1/4 HP, 208-230 V, 1100/1, CCW OSE	0131M00019P
5 1/2 inch diam., totally enclosed, ball bearing, capacitor required 5 MFD @ 370V (MARS No. 12005, 12905), CCW Shaft End		
10232	1/6 HP, 208-230 V, 810/1 CCW OSE	0131M00060
5 1/2 inch diam., totally enclosed, ball bearing, capacitor required 5 MFD @ 370V (MARS No. 12005, 12905), CCW Shaft End		
10233	1/8 HP, 208-230 V, 1050/1 CCW OSE	0131M00294
5 1/2 inch diam., totally enclosed, ball bearing, capacitor required 5 MFD @ 370V (MARS No. 12005, 12905), CCW Shaft end		
10594	1/2 HP, 115 V, 1130/4 CW OSE	0131F00022
5 1/2 inch diam., totally enclosed, ball bearing, capacitor required 20 MFD @ 370V (MARS No. 12014, 12914), CW Shaft end		

MARS No.	Description	York Source 1
10570	1/3 HP, 575 V, 850, CCW OSE	S1-02434550003
5 1/2 inch diam., totally enclosed, ball bearing, capacitor required, 5 MFD @ 370V (MARS No. 12005, 12905, 14005), CCW OSE		
10571	3/4 HP, 575 V, 1100, CCW OSE	S1-02434551003
5 1/2 inch diam., totally enclosed, ball bearing, capacitor required, 10 MFD @ 440V (MARS No. 12032, 12932, 14032), CCW OSE		

SunSlinger One-On-One™ Replacement Motor

MARS No.	Description	Century/AO Smith
20884	1/8, 1/6, 1/5, 1/4, 1/3 HP, 460 V, 825/1 Reversible	ORM4688BF
5 1/2 inch diam., totally enclosed, ball bearing, capacitor required 7.5 MFD @ 370V (MARS No. 12007, 12907, 14007), Reversible		

MARS No.	Description	US Motors/ Emerson
SunSlinger One-On-One™ Condenser Fan 70°C		
20462	1/3, 1/4, 1/5, 1/6 Multi-HP, Condenser Fan, 1075 RPM, 208-230 V, B/B	5462H

Disclaimer: Every effort has been made to insure the accuracy of motor data and cross reference information. Design changes may result in different operating characteristics or dimensional changes from one manufacturer to another. Therefore, MARS cannot accept responsibility for the ultimate selection. For additional information, please contact MARS.

Note: B/B – Ball Bearing





- **Available at www.MARSdelivers.com**
- **Extensive Product Training**
- **Reward Points for courses taken**
- **Complete Training Course Library**
- **Available on all mobile devices**



**Technical Helpline:
800.678.9888**



www.marsdelivers.com