

CHARLES SIMONIDS

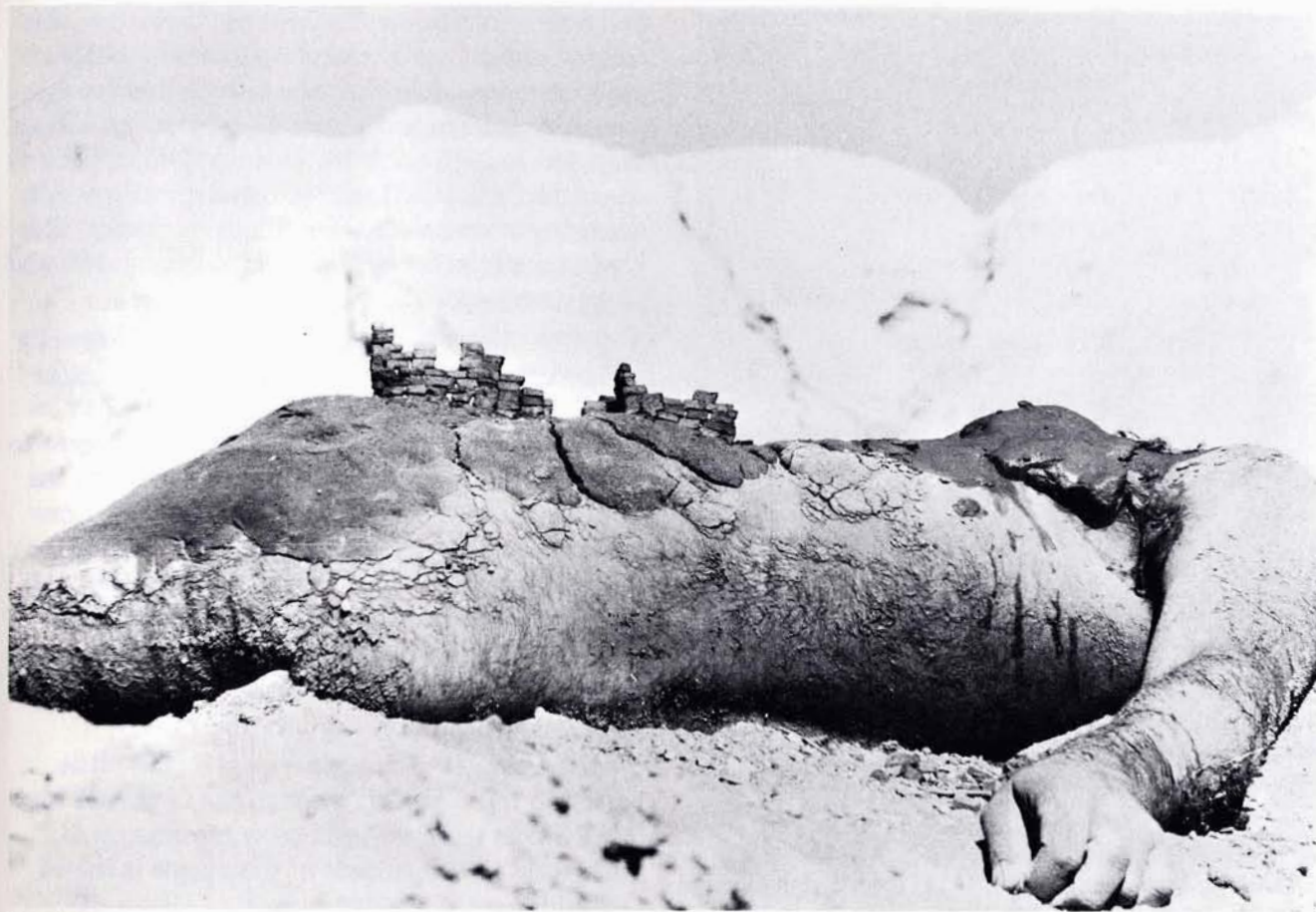


Published in conjunction with
Charles Simonds: Temenos
An exhibition at the
Albright-Knox Art Gallery
June 11 - July 17, 1977

Published by the Buffalo Fine Arts Academy and the
Albright-Knox Art Gallery

© 1977 by the Buffalo Fine Arts Academy
All rights reserved

Library of Congress catalog number 77-81577
ISBN 0-914782-14-2



Landscape ↔ Body ↔ Dwelling, 1971

All dwellings and models are made of clay, ½" bricks and sticks.

CHARLES SIMONDS

Growing out of a very personal examination of himself – his body, his space, his way of life, his imagination, his fantasies – Charles Simonds occupies himself with examining the materials of our civilization and of our lives.

Simonds's early work recreated parts of his body's history. It occupied his personal space. Gradually he began to define 'places' with his work. Realizing the behavior and ritual inherent in making this work, Simonds ultimately evolved an imaginary civilization populated by three distinct groups of 'Little People' – the Linear People, the Circular People, the Spiral People – each a group with identifiable characteristics, behavior, rites, rituals and dwellings. By transferring self to a larger context and personal life-space-civilization concepts to these three peoples Simonds gives us a metaphor for all life and civilization.

The clues and cues to the existence of the Little People are their abandoned dwellings and the places they have built or altered. Each civilization builds in distinct styles and shapes. The material is clay – a few twigs, some sand and occasionally other natural materials such as rocks and bits of bone. The clay is often red – from a New Jersey clay pit where Simonds has made a friend of one of the workers. The tiniest scoop from his 'front-loader' supplies Simonds with free material for a long time. The idea of using free and natural material – the original material for all dwellings – seems consistent with making things that have no owners.

In the early 1970s Simonds began to build outdoors in order to make his work accessible to view. The landscapes of the Little People were literally superimposed over the cityscape of New York. The city offered numerous physical parallels to the lives of these structures. An early group – the Cliff Dwellers build on the window ledges of the steep buildings of lower Manhattan (an area sometimes referred to as the canyons of New York). Then the civilizations began to migrate – mostly in and around New York's Lower East Side. There the rapid changes in the landscape-cityscape parallels the destruction and disintegration of the fragile clay cities. After the dwellings were built and abandoned they were vandalized and decayed as the buildings of that area do. Watching Simonds build the frail dwellings, seeing the preciousness and beauty of the Little People's lives and structures prompted many people who were lacking ownership in their own district to try and protect them. In turn, Simonds, increasingly aware of the moral issues of territoriality, upkeep and ownership, public and private space, became involved in neighborhoods whose projects reactivated certain areas of that community. He sees this involvement as a natural outgrowth of the art he was making. Giving a place another history by reactivating it seemed to encompass both activities.

For several years Simonds has been working on a project for the abandoned housing development at Breezy Point, New York. A group of structures built by the city as a housing project were abandoned 10 years ago after local protests over costs



Picaresque Landscape (detail), 1976. Installation Museum of Modern Art, New York, approximately 16 x 18' A ritual place with growth bricks and spiral city remains. and aesthetics. The concrete innards of the building – some 15 stories high – remained exposed and weathering. Simonds plans hanging gardens – planting begun last year will eventually cover the structures – giving life where there was none and growth where there was decay.

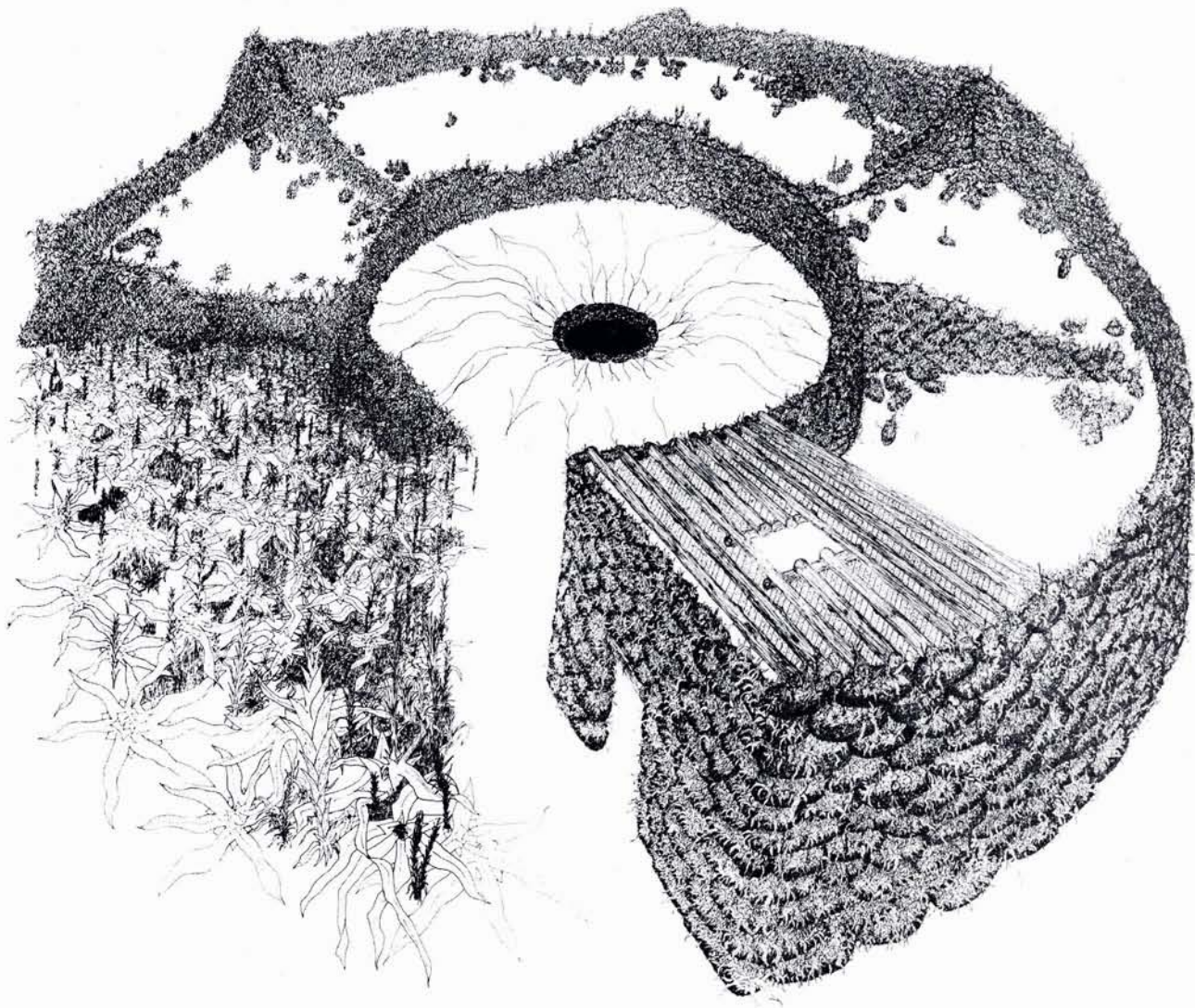
Simonds thinks a great deal about the way we live and the objects we surround ourselves with. He examines those objects and how and where we place them, when and where we move them – how they sift through our lives. This parallels the way the Little People – their traces and remains – sift through our consciousness and our memories. This kind of exploration has heightened his political and social awareness.

Recently, given the opportunity to use a vacant city lot in Cleveland, he contacted the people living in the adjacent apartment building to solicit their involvement. He was surprised to find the degree to which those people had become involved with the empty and unused space. The project became one of using their ideas to activate the area – with their total involvement – in ways not traditionally seen as art. Simonds became the catalyst to use the space – to build a play area, a barbecue pit, a garden (like his *Growth House* at Artpark, 1975) – he sees it as one of his best projects.

Charles Simonds often says he is the only 'little person' – his migration through the Cleveland lot left artifacts there that will grow on their own. Their scale suits the needs of the people involved – the publicness of the experience.

Simonds role changes from work to work – some of his work is much more private – his *Birth* film, for example. *Temenos*, the ritual area, reflects a more personal involvement on the part of both the artist and the viewer. Although ritual and religious ceremonies are usually participated in as a group, the emotions evoked are very private and intimate.

Simonds's work has only recently been shown in the gallery/museum context. When it is, he asks that other areas, outside those spaces, remain open to him to become involved in. For example, part of his inclusion in a recent Whitney Biennial was a dwelling in a window ledge across the street from the museum. In Buffalo he will work from a storefront — making clay dwellings in the area nearby, with the help of interested passersby. The groups of people who make up the audience for Simonds's work are large and varied — as he wishes them to be, and their responses are as diverse as they are.



The Growth House (detail), 1975

ink on paper

25 x 29½"

The Growth House is made up of growth bricks — a building unit of earth with seeds inside — as the seeds sprout growth transforms the built structure. The dwelling is converted from shelter to food and is harvested and eaten. *The Growth House* was constructed at Artpark, 1975.



Temenos (detail) 1977
Installation Albright-Knox Art Gallery, Buffalo
approximately 20 x 18'

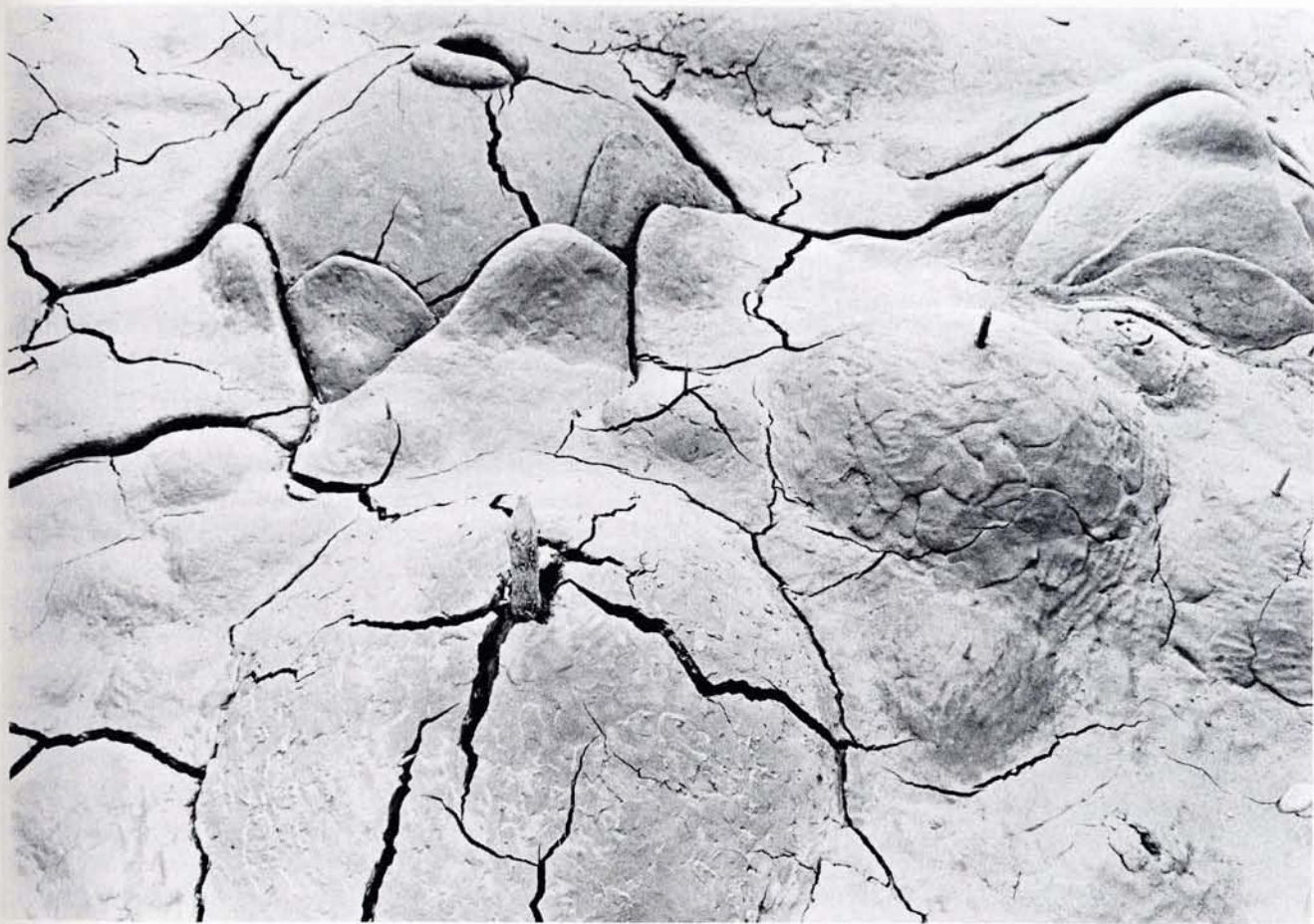


Ritual Cairns, at Artpark, Lewiston, New York, 1974, dimensions variable – highest 8'

By working in the streets – where he is seen as a worker as well as an artist and where he retains his identity as a person – Simonds is assured of this audience. Participation is an important factor in these projects where most people have never met an artist much less watched one work or helped with that work.

The contemplation time of Simonds's work is an interesting factor. Being on the streets means moving, therefore the street dwellings are seen in

passing – they are unexpected – they draw us up short – altering our sense of place and motion. The room installation, *Temenos*, is happened upon more slowly, set as it is where one is moving gradually from place to place, stopping, looking, moving around objects. Covering the floor of a room, it can be observed from the three doorways. The landscape – a series of dome-like hills – is complicated. It is filled with mounds and valleys into which are nestled holes, crevices and secret places. Like primitive architecture – so different from our



Temenos (detail), 1977, Installation Albright-Knox Art Gallery, Buffalo, approximately 20 x 18'

great, simple, sterile, modern shapes – *Temenos* reflects the sensuousness of its materials and the privacy of the shapes – with their obvious references to human contours. In this ritual place the landscape has been examined by the Little People and built to reflect their scale and the forms and

shapes of their life cycles. In Simonds's writings on the three peoples' mythologies we find clues to the ritual behavior of the Little People. The ritual *Cairns* built at Artpark in 1974 reflect certain aspects of the Spiral People's culture which is concerned with building in an upward manner. The

Cairns' slightly pyramidal shapes are mathematically accurate and emotionally optimistic.

Temenos might be more suited to the Circular People who "eschewing all temporary activity, re-enacted original creation in a dizzying celebration of sexual possibility.

The gathering took place in a dome—womb, at the center of the earth—dwelling universe that could be entered only by a ladder through the opening at the top . . . The annuary poles over the entrance to the dome cast shadows on the surrounding walls in complex and changing patterns, marking the passage of time. Inside the dome a chant was maintained without interruptions. Its faint rhythm audibly kept time for those outside. Everyone took their turn. Chanting was meditation, a way of passing into a non-ordinal pulse, unrelated to the particular incidents of life . . . intercourse could take place only within the sacred confines of the dome, and then only on the solstice; that unless protected by the dome—womb no conception was possible. . . ."

However, the ritual places are less specific as to their former inhabitants than, for example, the models, which are concentrated areas – each identifying a different group of people. Rather than conjuring up images of the former inhabitants they suggest a different time – even a different kind of time. *Temenos* activates our imagination by stirring our memories.

Linda L. Cathcart
Curator

* from *Three Peoples* by Charles Simonds, published by Samaneditzioni, Genoa, Italy, 1975.



CHARLES SIMONDS

Interviewed by
DANIEL ABADIE

Dwelling on East Houston St., New York, 1972

ABADIE:
Before the dwellings, what kind of artistic activity did you have?

SIMONDS:
That was a whole four years' work and would be very complicated to explain, but basically it was the following: an elaborate project that transformed my loft into "stations" using clay, my body (hair and fluids), fantasy images, and art historical and architectural image quotations, as a means of creating a fantasy history of a thought. The ingredients were in all different scales; there were fragments of "the colossal dream," small biological specimens, child-like paintings, shadows made with hair, broken and bandaged timbers, tadpoles in various stages of growth, sculptured reliefs of a voyage to Cythera, figures with birdheads, sacrificial columns, fragments of a large stairway covered with plasticene, and all sorts of other things.

ABADIE:
What is the origin of the Little People?

SIMONDS:
In the beginning, I laid down a piece of clay and sprinkled it with sand and it was a place. First there were objects – different ritual places, then slowly the notion of a people developed and the earth was populated. As landscapes, the pieces seemed most natural outdoors, as part of the real landscape. The Little People began migrating through one street. At this time (1970), there were actually two different peoples who were warring with each other. There were cliff dwellers (hunters) who lived on the walls and ledges of buildings; and

there were herdsmen who lived on the plains of the street – in the gutters and against the bases of buildings. The cliff dwellers periodically descended to raid the plains people. Finally the two peoples merged through conquest and assimilation.

Internally the Little People's origin lies somewhere among my childhood visits to the Southwest, running away from my parents while I was there, my upbringing as the son of two psychoanalysts trained in Vienna, having an older brother who worked realistically in clay at home – and my own interest in clay as the most traditional art material, and as a *prima materia* of life.

ABADIE:
Why did you choose to work in the streets?

SIMONDS:
My house was filled up with fantasy places and it seemed so easy just to make them outside, where more people could see them. The street was exciting and adventuresome. The Little People were met with such good will there that they stayed and grew. The architecture of the city is filled with strange crevices, cliffs and ledges that could be endlessly explored. The dwellings have a peculiar way of transforming a man-made space (such as niches of broken bricks in a wall) into a natural landscape, a cliff where a dwelling can be built. It was also fascinating to confront people's proprietary interests in the street. What seemed like open and vacant space was really charged with territorial energies.

I worked in SoHo in the beginning (1970-72), at a time when the area still had many laborers. The Little People made contact with two audiences

there – the art people and the regular workers loading trucks. Generally, the art people's reactions were predictable and also inhibited by social conventions that made them try to attach me to their context – the art world. The workers reacted spontaneously with excitement and comments certainly as profound as the art people's. They picked up on many of the associations I found most interesting.

Thinking of this, I decided I wanted to explore one neighborhood of the city – a coherent geography and sociology with which I could work over a period of time. That way the Little People could establish a history and mythology of their own in relationship to one group of people. I wanted a neighborhood that had an active street life, and the Lower East Side seemed right. Many of the workers in SoHo had been Black or Puerto Rican. Actually it was curiosity that brought me to the Lower East Side – the same kind of curiosity that makes me want to explore reactions to the Little People in foreign countries.

I did the first dwelling on the Lower East Side with some trepidation, feeling like an outsider, not really knowing the structure of the neighborhood. I did it on Avenue C – the Broadway of that area. Many people gathered and it was an ecstatic day for me. Little children climbed all over me; policemen, plumbers, junkies checked me out; a storeowner brought me coffee. I was convinced I should stay, and now I've one or more dwellings on every block in the area – about 200 of them, most of which have been destroyed, either by little kids playing bombardier or people trying to take them home.



People Who Live in a Circle, 1972, 30" diameter
Collection Lucy R. Lippard

There is a pattern of reaction to the destruction. Because people see me spending a long time making the dwellings, and because they were so intricate and fragile and beautiful, they are viewed as very precious. Because their image is so strong, when they are destroyed there is a tremendous sense of loss. The dwelling belongs to everyone on the block as long as it is possessed by no one in particular. As soon as someone wants to possess it or take it away, they destroy it.

Through time, my role has changed. At first I was just a crazy man to the people on the Lower East Side, stripped of identity as a person. I was a phenomenon, an anonymous vagabond who made visionary things. As time passed, I became first a folk hero, then an active member of many community groups, especially the Lower East Side

Coalition for Human Housing, with whom I've worked for several years on *La Placita* (the park playlot) and a number of other projects.

ABADIE:

Do you refuse the usual social channels of art, such as commercial galleries?

SIMONDS:

In some instances I do actually refuse the traditional social channels of art; in other instances I just choose other means of pushing my ideas out that seem more appropriate to their content. Most museum-gallery contexts eliminate the most important aspects of my work, such as direct contact with audience, my role and identity as an active individual in the world at large, allusive qualities of time and space related to the real environment, political activity and beliefs. Museums and the art world are governed by a strong predetermined consciousness. The dwellings in the street are happened upon, as a kind of apparition — a dream hole in reality. Being able to affect someone unexpectedly, someone just walking along in his daily life — that's a powerful tool. Thinking about the ways my thought can enter someone's consciousness is one reason I work in the street.

Certainly my role on the Lower East Side is not so peculiar when you look at the role of artists in other societies. There is a difference between a competitive aggressive context and one that preserves a sense of shared humanity and community in a struggle. Crossing social, economic and ethnic lines has been taboo in the art world. I think the fact that my art has become more meaningful and

effective through just that is tremendously important. It could indicate possibilities for other artists. So much art is the unwitting servant of an elite. This is not necessary to affect people's beliefs and values.

There are also external aspects that force me to avoid some situations — thoughts about an object's consumption. The transforming of my work into

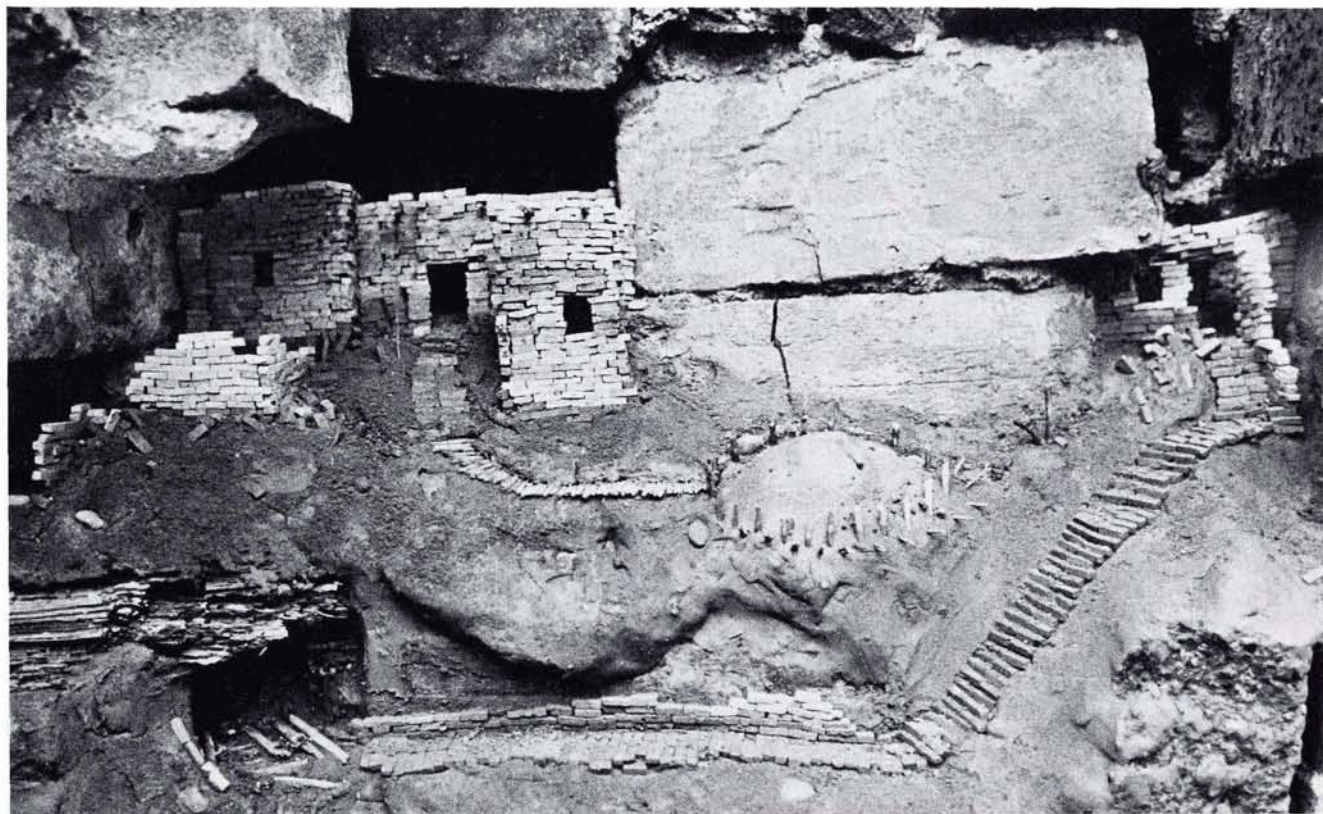


Spiral Dwelling (detail), 1974, 30" diameter.

relics for investment by the rich is less interesting even than the consumption by destruction on the Lower East Side. At least there they are engaged in a stimulating social dialogue so long as they survive. Once I was told by a person on 2nd Street that the first time he saw me working he was on his way to kill someone with a knife and he came upon me and got so cooled out that he stopped and watched, and didn't go on. This means alot to me.

I do feel a commitment to making ideas available to as many people as possible, including art people, even if only as films, photographs, and other "reflections." So I know I'm juggling contradictions (though at least it's not the radical chic of pseudo Marxists and Maoists who spend their time raging in an intellectual teapot). I worry about trading on one situation to nourish another. But I am far more interested in taking what knowledge and understanding I gathered from art out into other contexts than I'm interested in dragging a part of the real world into the art world to make it into "art," as has happened so often in the last decade — like Pop Art, "earthworks," "street-works," etc. The change must lie in a change of audience — not bringing "new goods" to the same old people.

My time is primarily spent on the Lower East Side, working with the youth and community agencies to deal with housing and rehabilitation of open spaces. This cannot be separated from the overall reality there, since it is a prominent part of life in that neighborhood; most of it is falling down and the City refuses to help rebuild it. The art world



Dwelling on East 4th Street, New York, 1974

only seems able to consume ideas in a very limited way. This is especially true when one steps outside of it. In the art context, my activity is interpreted so bizarrely, so differently than it is seen on the Lower East Side, where most people don't even know there is such a thing as an art community — as media or geography. If they knew, I doubt if they would care. But they feel very strongly about what I do anyway; it's part of their lives, and I

have a complete identity there. That gives me great sustenance.

ABADIE:

Do you mind children and people watching you while you're working in the streets?

SIMONDS:

No. Making a dwelling in the streets is like holding hands with your audience. The dwelling becomes

the medium through which we talk. The Little People are suction on people's psyches. They elicit all sorts of comments. This is how *La Placita* started. Someone came along and said why don't we fix up this lot — a thought I'd already had. The dwellings also provoke great flights of fantasy in the audience. Children physically add things to them. I give them bricks and show them how to make more and we stand around working together. Some of the other things I do are very private, intimate, and personal experiences — *Landscape ↔ Body ↔ Dwelling*, for instance. If there are people there when I do it, I position myself so I don't see them. As I begin, they usually recede entirely.

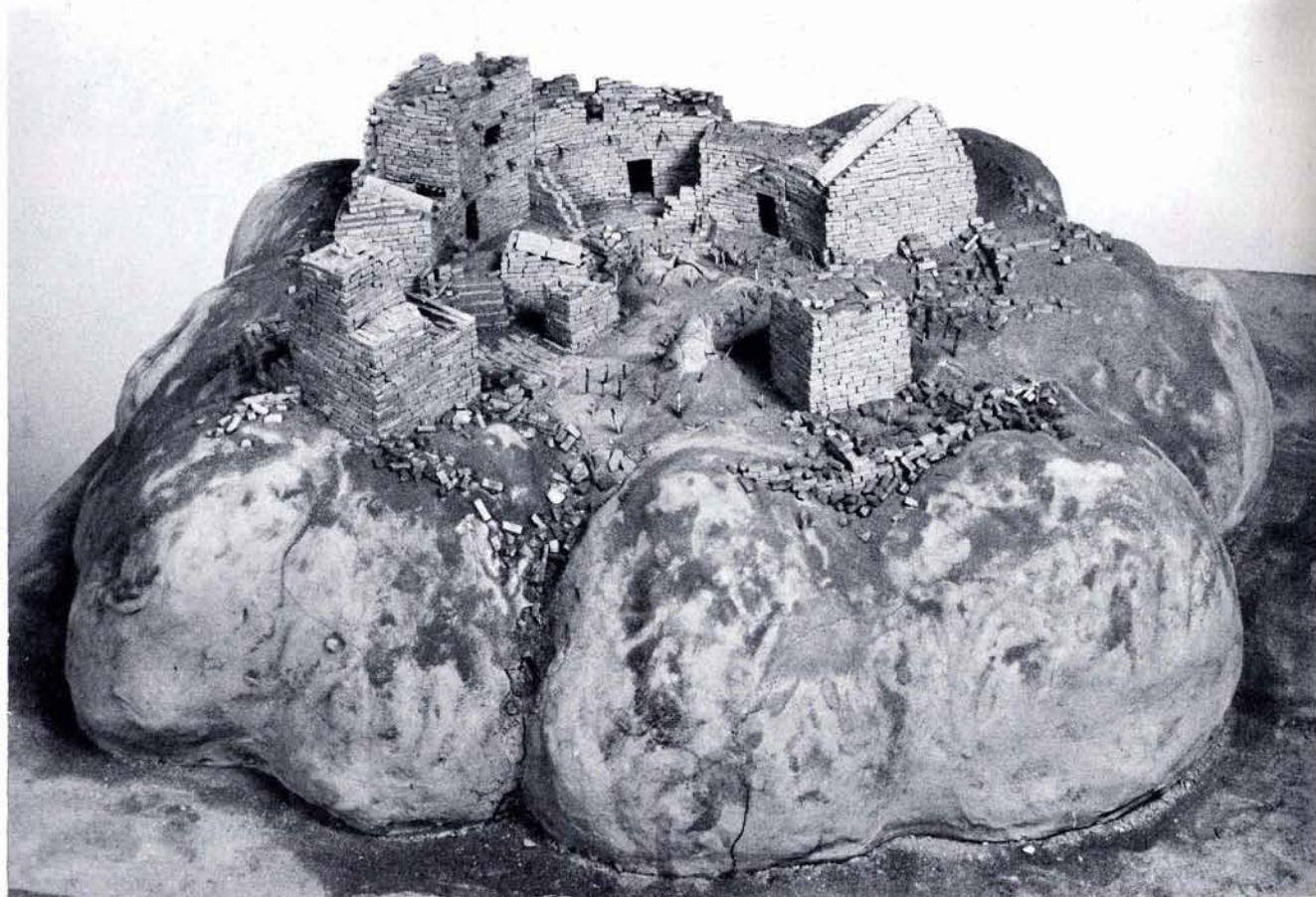
ABADIE:
By the destruction and disintegration of the dwellings in the streets do you intend to assimilate time into the work?

SIMONDS:
"I" seem to "intend" very little as regards the Little People. They intend and I follow. Standing outside the work, after the fact, I would say that time is captured by the Little People as part of their existence. First, they have their own internal history, their migration, which might be elucidated by an archeological excavation of various sites, piecing together the events of their past. Second, they have a history as objects within a given community; on the Lower East Side, one dwelling will call forth memories of others. Third, each dwelling has a peculiar time sense of its own — a dislocation from the moment it is being seen. The image itself is one

of a past moment, a part of America's past, like the Pueblo Indians, and a place that the Little People have left — an abandoned city or house. Each dwelling is a scene, a moment from the Little People's lives; each one goes through a birth, life, death cycle.

ABADIE:
Why did you start making films?

SIMONDS:
Because few of the things I was doing were available to other than the direct audience that experiences them. I was interested in making them available to



Abandoned Observatory, 1975, 30" diameter
Collection Musée national d'art moderne, Centre national d'art et de culture Georges Pompidou

more people as examples of an activity that might affect other artists. The films *Birth, Body ↔ Earth* and *Landscape ↔ Body ↔ Dwelling* are records of rituals from the underlying mythology of the Little People, and I wanted that information out.

ABADIE:
How do you contribute to the realization of the films?

SIMONDS:
Often I edit them; I also work with the filmmaker beforehand to figure out the overall concept and specific shots.

ABADIE:
Does the realization of monumental projects like those at Artpark go against the secret and hidden aspects of your work? Is the miniaturization of your work the constant and *Niagara Gorge*, the *Growth House*, and *La Placita* the contradictions?

SIMONDS:
Somewhere in my mind everything is only one scale – the scale of my vision. I don't think about something being small or large. I'm in a dwelling down there just as I'm in the full scale work. Miniaturization exists in one realm of my thinking as a tool – an economy of means. The small dwellings are most economical in terms of the time and space demanded to make them. They are not hermetic so much as they are intimate and self-contained; they are hidden only in contrast to the street's scale of publicness. But the miniature pieces and the full scale ones share my involvement with habitation – how people live and how their values affect their living places. *Niagara Gorge*, for



Park Model - Fantasy (detail), 1974, clay and photographs, 20 x 30". Collection Lucy R. Lippard



Park Model - Fantasy (detail), 1975, clay and photographs, 20 x 30"

instance, by excavating an architectural fragment rife with history and associations, and inhabiting it, awakened a large chunk of emotional history residing in the landscape and made it available. It shared with the Little People's dwellings the quality of re-inhabiting an architectural fragment.

La Placita is a large project sharing with the dwellings an interest in the political articulation of the earth. A vacant lot in a city is a piece of earth which had been given form by habitation and then was returned to ground level, approaching its primary state. Just as the Little People slide through the reality of the city and transform small pieces of

real estate and consciousness into other attitudes about the earth, so does *La Placita*. The park is primarily an expression of a group's involvement in the part of the earth they inhabit. In this case my role has been merely to focus this involvement and give the people a channel to express their collective values instead of my personal or unconscious ones, as in the Little People.

It would please me greatly to have structures like the Circular People's house made large scale and inhabited by a given community. The *Growth House* was an attempt to make a microcosmic sociology for the town of Lewistown, whereas the

Niagara Gorge dwelling was closer to a Little People's dwelling full scale. I could step into it and enact the Little People's rituals.

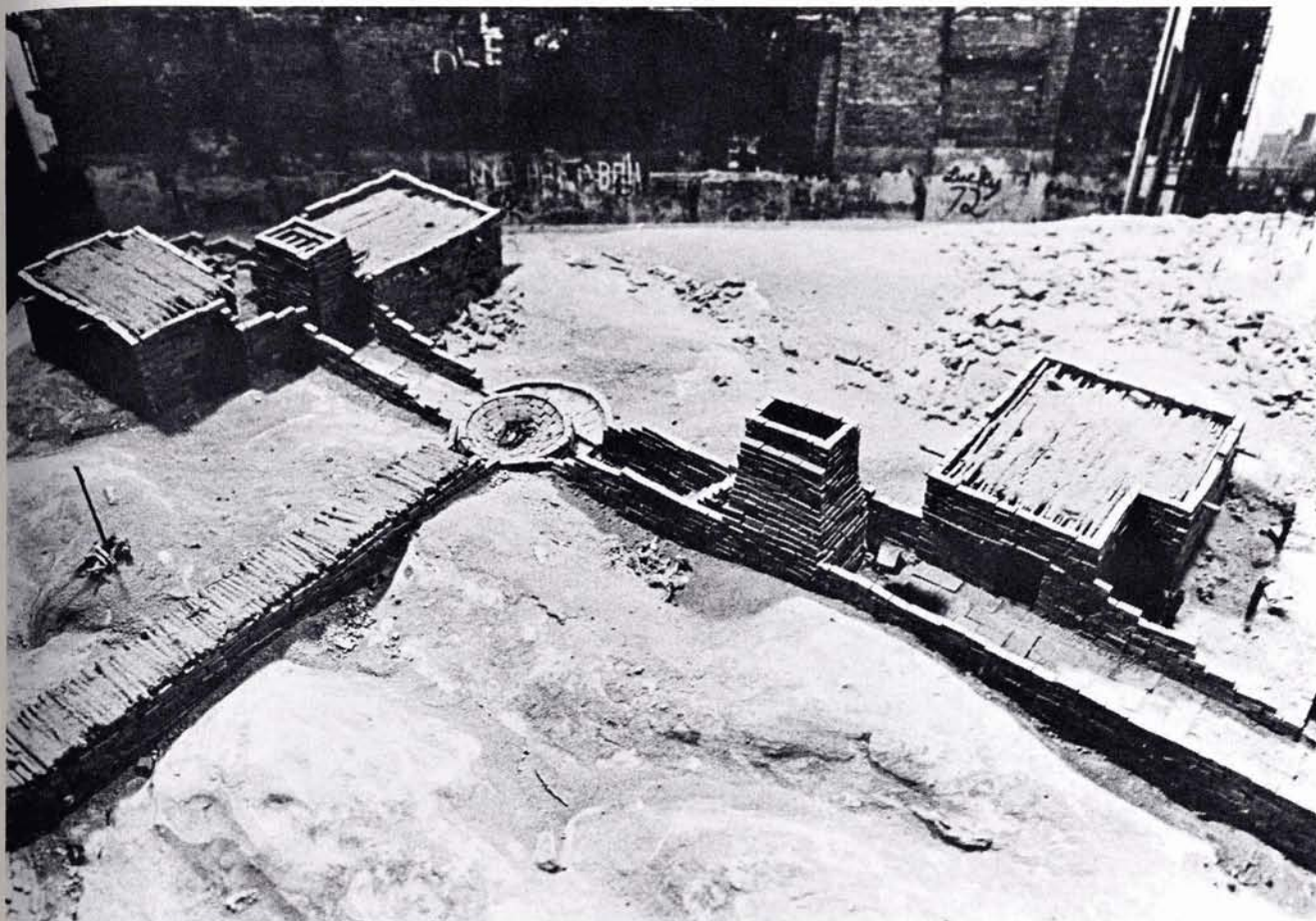
ABADIE:

How does your sculpture belong to your work? What is your aim in using types of symbolic architectures — the labyrinth and mastaba? Don't you think that the specificity of unique works of art goes against the notion of non-ownership of the dwellings left in the streets?

SIMONDS:

Yes of course. If you are considering the "unique works" primarily from the point of view of the specific sociology that consumes them. However, the content and the sources of both the object works and the dwellings begin before the social realities or uses become an issue. The object works are more extravagant in that I spend large amounts of time concentrating on one thought. They attempt to bring to an emblematic state the same thought that forms the dwelling in the street. Thus the Circular, Spiral and Linear Peoples abstract to an object state configurations of philosophical attitudes about time and space in architecture, ways of living. The Linear People are analogous to the migrating, transient Little People; the Spiral People are analogous to the reality of the city in its inevitable self-consumption.

Other object works attempt to bring to that same emblematic state certain biological aspects of life and the body's function. Thus the labyrinth approximates a seduction, and the incinerator — digestion, and the mastaba — death.



Park Model • Fantasy (detail), 1976, clay and photographs, 20 x 30"

The remains of a group of people the geometry of whose architecture was at a 45° angle to the axis of the city. Part of a semaphore village: three models presenting three different periods in its history. The side walls reflect the coordinates of New York and represent a through-the-block lot on East Second Street between Avenues B and C. The dwellings were built along a continuous line of habitation. Signals were sent from house to house by means of a tower, and each family was responsible for the maintenance of its fires. In the first model, (above) the dwellings and towers are functioning. In the second model, (page 11) they are abandoned, and only parts of a ritual place are still used. In the third model, (opposite page) one segment has been reinhabited and the ritual places are fully used.

ABADIE:

Don't you find some sort of regression in the recreation of imaginary sociologies and mythologies?

SIMONDS:

Absolutely. There is an amazing simple joy in the childlike world of the Little People, a peaceful and untrammelled world, almost thoughtless. But the metaphorical aspects of a child's world are also very powerful. The regression allows elements to surface in a way that makes them very clear and malleable for me, and for others entering that world. Most of my thinking takes place on a very simple level. Almost everything I've done in the last five years is an extrapolation of three or four simple thoughts, all of which I had in a few days. These thoughts do have interrelationships that are complex and allusive to me. Taking them and confronting various realities with them also nurtured the complexity.

ABADIE:

Earth is traditionally related to the mother complex. Is there any connection to the sensuality in your work?

SIMONDS:

Clay is a sexual material – symbolically as the earth, and physically in the way it behaves.

ABADIE:

How much do you wish to be related to myths or is it a simple accidental connotation?

SIMONDS:

The development of a personal/universal mythology is a central concern of mine, as is the use of that

mythology as an investigative tool to fracture the present.

ABADIE:

Is your work formal or are you mainly interested in bringing out some scheme of thinking, a set of beliefs?

SIMONDS:

I spend very little time thinking about form. Sometimes in a dwelling's ritual area, forms surface that engage me on that level, but otherwise the general specificity and abstractness of the formal structures I'm working with (such as architectures that follow a circular pattern) are the results of the conceptual aspects which dictate the formal possibilities.

Because I'm anxious to connect my ideas directly with another audience that is unaware of the dialectics of form and content from an art historical point of view, this issue becomes less important to me than those that give the work a look into people's lives. The issue of form is almost inapplicable to *La Placita*, where I was only interested in creating a ground from which a group of people could express their beliefs. The form merely reinstated an image of the earth rising from beneath the city. At first this seemed to require a dramatic landscape of hills, but as it turned out, the land could be politically activated with a much lower profile. A project like this or the *Growth House* really offers an invitation for people to alter or create form through participation and involvement. It points up some of the coordinates of my interests. Certain forms are viable

only when they can be useful, used, as is, by and for other people. Other forms are only viable when they act as vehicles of imagination and transformation for other people's creativity, which might never have surfaced without these forms.

I wish I had more time to indulge my love and knowledge of form-making and eventually, I expect to.



Proposal for Stanley Tankel Memorial Hanging Gardens at Breezy Point (drawing in process), 1976
ink on photostat, 12 x 17 3/4

CHECK LIST OF THE EXHIBITION:

TEMENOS, 1977

clay, stones and sticks
approximately 20 x 18'

*19th Century Railroad Tunnel,
Niagara Gorge*, c. 1920
photograph
19 x 13½"

Courtesy of Niagara Power Authority

Birth, 1971
color photographs
24 pieces, each 8 x 10"

People Who Live in a Circle, 1972
color photograph
16¾ x 25¼"

Dwelling, 1974
color photograph
16¾ x 25¼"

*Excavated and Inhabited 19th Century Railroad
Tunnel Remains and Ritual Cairns*, 1974
color photograph
16¾ x 25¼"

Landscape ↔ Body ↔ Dwelling, 1974
color photograph
16¾ x 25¼"

People Who Live in an Ascending Spiral, 1974
color photograph
16¾ x 25¼"

Ritual Cairns, 1974
color photograph
16¾ x 25¼"

Park Model - Fantasy, 1974
clay and photographs
20 x 30"
Collection of Lucy R. Lippard

Park Model - Fantasy, 1975
clay and photographs
20 x 30"

Park Model - Fantasy, 1976
clay and photographs
20 x 30"

The Growth House, 1975
color photographs
3 pieces, each 8 x 10"

The Growth House, 1975
ink on paper
25 x 29½"

*Proposal for Stanley Tankel Memorial Hanging
Gardens at Breezy Point* (drawing in process), 1976
ink on photostat
12 x 17¾"

All dwellings and models are made of clay, ½" bricks
and sticks.

ONE ARTIST EXHIBITIONS:

- 1975 *Charles Simonds Demeures et Mythologies*,
Centre national d'art contemporain, Paris
Samangallery, Genoa
- 1976 *Projects: Charles Simonds*
Museum of Modern Art, New York
- 1977 Tompkins Square Library, New York

SELECTED GROUP EXHIBITIONS:

- 1971 112 Greene Street, New York
- 1972 Willard Gallery, New York
- 1973 *8^e Biennale de Paris*, Musée d'art moderne
de la Ville de Paris, Paris
- 1974 *Interventions in Landscape*, MIT,
Cambridge, Massachusetts
- 1975 Artists Space, New York
*1975 Biennial Exhibition: Contemporary
American Art*, Whitney Museum of
American Art, New York
Primitive Presence, Vassar College Museum
of Art, Poughkeepsie, New York
Small Scale,
The Art Institute of Chicago, Chicago
Art in Landscape, Independent Curators,
Inc., Washington, D. C.
Not Photography, The Fine Arts Building,
New York
9^e Biennale de Paris, Musée d'art moderne
de la Ville de Paris, Paris
112 Greene Street, New York
- 1976 *Scale*, The Fine Arts Building, New York
Personal Mythologies, The Fine Arts
Building, New York
Subject, Object, Project, Philadelphia
College of Art, Philadelphia

La Biennale di Venezia 1976, Venice

American Museum of Natural History
New York

- 1977 *The City Project*, The New Gallery of
Contemporary Art, Cleveland

1977 Biennial Exhibition: Contemporary
American Art, Whitney Museum of
American Art, New York

The primary focus of Charles Simonds's activities has been working in the streets of New York City from 1970 to the present. A park-playlot-sculpture on East 2nd Street in New York was completed in summer 1975 in cooperation with the Lower East Side Coalition for Human Housing, the Association of Community Service Centers, and the Young New Yorkers.

SELECTED BIBLIOGRAPHY:

- 1974 Simonds, Charles. "Microcosm to Macrocosm/Fantasy World to Real World." *Artforum*, vol. XII (February 1974), 36-39. (taped conversation with Lucy Lippard)
"Vernacular Myth." *Art-Rite*, no. 6 (Summer 1974), 9-11.
- 1975 Abadie, Daniel. *Charles Simonds*. (Art/Cahier 2). Paris, SMI, 1975.
Huser, France. "De New York à Ménilmontant: Demeures et Mythologies de Charles Simonds." *Le Nouvel Observateur*, November 24, 1975.

McConathy, Dale. "Keeping Time: Some notes on Reinhardt, Smithson and Simonds." *Artscanada*, vol. XXXII, no. 198/199, (June 1975) 52-57.

Schneider, Pierre. "Les Lilliputiens de Simonds." *L'Express*, December 8-14, 1975.

Simonds, Charles. *Three Peoples*. Genoa, Samanedizioni, 1975.

Wolfin, Marie-Claude. "Une Mystique Sexuelle." *Info Artitudes*, December 3, 1975.

- 1976 Celant, Germano, "Charles Simonds: Little People." *Casabella*, no. 411 (March 1976), 39-41.

Leenhardt, Jacques. "L'Urbanisme Parallèle de Charles Simonds." *Journal de Genève*, January 31, 1976.

Metken, Günter. "Charles Simonds." *Suddeutsche Zeitung*, January 21, 1976.

Restany, Pierre. "Little People: Omuncoli, Les Demeures de Charles Simonds pour un Peuple Imaginaire." *Domus*, no. 555 (February 1976), 52-53.

Stone, Michelle, and Sky, Allison, eds. *Unbuilt America*. New York, McGraw Hill, 1976.

"Talk of the Town: The Little People." *The New Yorker*, (November 22, 1976), 38-40.

- 1977 Sondheim, Alan. *Individuals: Post-Movement Art in America*. New York, E. P. Dutton & Co., 1977.

CHARLES SIMONDS FILMS: (All films are 16mm)

Birth, color, 1970

Dwellings, filmed and edited by David Troy, black and white, 1972

Landscape ↔ Body ↔ Dwelling, filmed by Rudy Burckhardt, edited by Charles Simonds, color, 1973

Body ↔ Earth, filmed by Rudy Burckhardt, edited by Charles Simonds, color, 1974

Dwellings Winter 1974, filmed and edited by Rudy Burckhardt, color, 1974

Niagara Gorge, filmed by Emil Antonucci, edited by Charles Simonds, color, 1974

ACKNOWLEDGMENTS:

I wish to extend my sincere thanks to all those whose support and contributions made this exhibition possible: Robert T. Buck, Jr., Gallery Director; Norma Bardo, my secretary; Serena Rattazzi, Coordinator of Public Relations; the Library Staff; the Education Department; the Preparation and Installation crew; Lauren Berger and Laura Fleischmann, our student interns; Howardena Pindell of the Museum of Modern Art; HALLWALLS staff – especially Robert Longo, Ron Le Fleur, Linda Neiman and Rick Zucker; Ken Davis, catalogue designer; Daniel Abadie for his generous permission to print his interview with Charles; and most of all Charles Simonds for his involvement with the Buffalo community and his unique contribution, *Temenos*, for the exhibition.

L. L. C.

PHOTO CREDITS:

Rudolph Burckhardt 2, 8, 11

Ken Davis 4 (left), 5, 12, 13

Jacques Faujour 10

Yuri 9

This exhibition and Charles Simonds's residence were made possible by a grant from the National Endowment for the Arts, a federal agency, to the Albright-Knox Art Gallery and HALLWALLS.