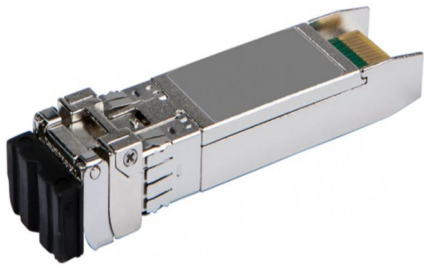


# HPE JL485A Datasheet



Aruba JL485A 25G SFP28 LC eSR 400m MMF XCVR

JL485A

Aruba JL485A 25G SFP28 LC eSR 400m MMF XCVR

Aruba 25G SFP28 LC eSR 400m MMF Transceiver

SKU # JL485A

## Specifications

- Differentiator: 25G SFP28 LC eSR 400m MMF transceiver for use in selected Aruba products.
- Warranty: For your product warranty coverage, please see the Aruba Product Warranty Summary <https://www.arubanetworks.com/assets/support/warranty-coverage-quick-reference.pdf>
- Weight: 0.1 lb
- Weight: 20 gm
- Minimum dimensions ( H x W x D): 0.5 x 0.6 x 2.2 in
- Minimum dimensions ( H x W x D): 1.3 x 1.5 x 5.6 cm

For more information of this HPE Aruba JL485A, please visit HPE website:

<https://buy.hpe.com/us/en/options/transceivers/transceivers/networking-sfp28-form-factor/aruba-25g-sfp28-lc-esr-400m-mmf-transceiver/p/jl485a>

[Buy Now](#)