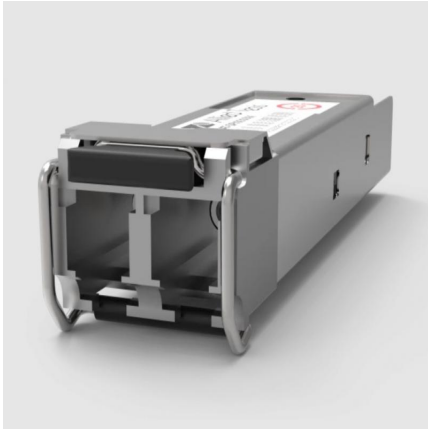


Allied Telesis AT-SPSX-E Datasheet



Allied Telesis AT-SPSX/E 1000SX SFP, LC, MMF, 850 nm, 220-550m, Ext-Temp SFP Transceiver Module

AT-SPSX-E

Allied Telesis AT-SPSX/E 1000SX SFP, LC, MMF, 850 nm, 220-550m, Ext-Temp SFP Transceiver Module

The Allied Telesis SP Series delivers flexible, full-duplex Ethernet connectivity. These hot-swappable fiber and copper interfaces simply plug into the SFP slot on all SFP-compatible devices. Configuration can be optimized to meet a wide variety of distance and service requirements. The SPSX/E offers a short-haul option to extend your network to 220-550 m.

Specifications

- Part Number: AT-SPSX/E
- Fiber Tyep: MMF
- Connector: LC
- Maximum Distance: 220-550 m
- Wavelength: 850nm
- DDM: No
- Transmit: -9 ~ -1 dBm
- Receive Sensitivity: -18dBm
- Power Budget: 9dBm
- Over-load: -3dBm
- Operating Temperature: -40°C to 105°C (-40°F to 221°F)

Fore more information of this Allied Telesis AT-SPSX/E, please visit Allied Telesis website:

<https://www.alliedtelesis.com/us/en/products/transceivers/1G/spsxe>

[Buy Now](#)