

InFocus

LITESHOW 4 DB+

User Guide



Declaration of Conformity

Manufacturer: InFocus Corporation, 13190 SW 68th Parkway, Suite 200, Portland, OR 97223-8368

We declare under our sole responsibility that the LiteShow wireless adapter conforms to the following directives and norms:



European Union: CE Standard



FCC ID : SQ2WGA510P16

U.S.A : FCC Standard

IC : 8510A-LSHOW4DB

Canada : IC Standard



Australia : RCM Standard

AS/NZS 4268 / CISPR 22 Class B / IEC 60950-1

この装置は、クラスB情報技術装置です。この装置は、家庭環境で使用することを目的としていますが、この装置がラジオやテレビジョン受信機に近接して使用されると、受信障害を引き起こすことがあります。

取扱説明書に従って正しい取り扱いをして下さい。

VCCI-B

The Agency/Regulatory Approval for the computer's wireless adapter is solely the responsibility of the adapter manufacturer - not InFocus Corporation.

Trademarks

InFocus, In Focus, INFOCUS (stylized), LiteShow and associated INFOCUS logos and designs, are either trademarks or registered trademarks of InFocus Corporation in the United States and other countries. Apple and Macintosh are trademarks or registered trademarks of Apple Computer, Inc. Microsoft and Windows are trademarks or registered trademarks of Microsoft Corporation. Other trademarks mentioned herein are the property of their respective owners and are referenced for information only. Any reference does not imply affiliation, recommendation or endorsement by or between the respective trademark owners and InFocus Corporation.



NOTE: This product is covered electrical and electronic equipment under the European Union's Waste from Electrical and Electronic Equipment ("WEEE") Directive (2002/96/EC). The WEEE Directive requires that covered equipment be collected and managed separately from typical household waste in all EU member states. Please follow the guidance of your local environmental authority or ask the shop where you purchased the product for collection or recycling options.

Federal Communications Commission (FCC) Statement

This equipment has been tested and found to comply with the limits for a Class B digital device, pursuant to part 15 of the FCC rules. These limits are designed to provide reasonable protection against harmful interference in a residential installation.

This equipment generates, uses and can radiate radio frequency energy and, if not installed and used in accordance with the instructions, may cause harmful interference to radio communications. However, there is no guarantee that interference will not occur in a particular installation. If this equipment does cause harmful interference to radio or television reception, which can be determined by turning the equipment off and on, the user is encouraged to try to correct the interference by one or more of the following measures:

- Reorient or relocate the receiving antenna.
- Increase the separation between the equipment and receiver.
- Connect the equipment into an outlet on a circuit different from that to which the receiver is connected.
- Consult the dealer or an experienced radio/TV technician for help.

You are cautioned that changes or modifications not expressly approved by the part responsible for compliance could void the user's authority to operate the equipment.

FCC RF Radiation Exposure Statement:

1. This Transmitter must not be co-located or operating in conjunction with any other antenna or transmitter.
2. This equipment complies with FCC RF radiation exposure limits set forth for an uncontrolled environment. This equipment should be installed and operated with a minimum distance of 20 centimeters between the radiator and your body.

Operation in the band 5150-5250 MHz is only for indoor use to reduce the potential for harmful interference to co-channel mobile satellite systems. Please note that high-power radars are allocated as primary users (i.e. priority users) of the bands

Canada

This device complies with Industry Canada's licence-exempt RSSs. Operation is subject to the following two conditions:

- (1) This device may not cause interference; and
- (2) This device must accept any interference, including interference that may cause undesired operation of the device.

Le présent appareil est conforme aux CNR d'Industrie Canada applicables aux appareils radio exempts de licence. L'exploitation est autorisée aux deux conditions suivantes: (1) l'appareil ne doit pas produire de brouillage, et (2) l'utilisateur de l'appareil doit accepter tout brouillage radioélectrique subi, même si le brouillage est susceptible d'en compromettre le fonctionnement.

Radiation Exposure Statement:

The product comply with the Canada portable RF exposure limit set forth for an uncontrolled environment and are safe for intended operation as described in this manual. The further RF exposure reduction can be achieved if the product can be kept as far as possible from the user body or set the device to lower output power if such function is available.

Informations concernant l'exposition aux fréquences radio (RF)

Le produit est conforme aux limites d'exposition pour les appareils portables RF pour les Etats-Unis et le Canada établies pour un environnement non contrôlé. Le produit est sûr pour un fonctionnement tel que décrit dans ce manuel. La réduction aux expositions RF peut être augmentée si l'appareil peut être conservé aussi loin que possible du corps de l'utilisateur ou que le dispositif est réglé sur la puissance de sortie la plus faible si une telle fonction est disponible.

The device shall automatically discontinue transmission in cases of absence of information to transmit, or operational failure.

Note that this is not intended to prohibit transmission of control or signalling information or the use of repetitive

codes where required by the technology.

The device for operation in the band 5150–5250 MHz is only for indoor use to reduce the potential for harmful interference to co-channel mobile satellite systems;

This device is restricted to indoor use.

This device and its antenna(s) must not be co-located or operating in conjunction with any other antenna or transmitter.

CAN ICES-3 (B)/NMB-3(B)

The Country Code Selection feature is disabled for products marketed in the US/Canada

Le présent émetteur radio a été approuvé par Industrie Canada pour fonctionner avec les types d'antenne énumérés ci-dessous et ayant un gain admissible maximal et l'impédance requise pour chaque type d'antenne. Les types d'antenne non inclus dans cette liste, ou dont le gain est supérieur au gain maximal indiqué, sont strictement interdits pour l'exploitation de l'émetteur.

No.	Model	Ant. Type	Ant. Connector	Gain (dBi)	Remark
1	AN2450-4828RS	Dipole	SMA Male Reverse	2	2.4GHz / 5GHz
2				2	2.4GHz / 5GHz

Europe

2.4GHz: 802.11b, 802.11g, 802.11n (HT20), 802.11n (HT40)

5GHz: 802.11a

The frequency, mode and the maximum transmitted power in EU are listed below:

2400 MHz – 2483.5 MHz: 21.53 dBm (EIRP)

5150 MHz – 5250 MHz: 18.97 dBm (EIRP)

PLUGGABLE EQUIPMENT, the socket-outlet shall be installed near the equipment and shall be easily

This equipment complies with EU radiation exposure limits set forth for an uncontrolled environment. This equipment should be installed and operated with minimum distance 20cm between the radiator & your body.

5150-5350MHz for Only indoor use

Agency Approvals

FCC, CE, IC, RCM

Other specific Country Approvals may apply, see please product certification label.

InFocus reserves the right to alter product offerings and specifications at any time without notice.

Table of Contents

OVERVIEW.....	9
Features	9
What's in the Box	9
INITIAL SETUP	10
WINDOWS CLIENT UTILITY.....	12
Launch Application.....	12
Application Control Panel.....	13
Projection Mode Tab	13
Video Mode Tab	14
Menu Functions	15
Show Receiver Information	15
Web Admin.....	15
Search Receiver Device.....	15
Launch SidePad	16
Launch WebSlides.....	17
Select Projection Desktop.....	19
Projection Quality.....	20
Projection Mode	20
Resolution Setting	20
Projection Aspect Ratio	21
Enable IWB USB Bridge	21
Advanced Screen Capture.....	21
Send Audio to Display.....	22
Auto Power Management	22
Auto WiFi Connect	22
Make USB PnS token.....	23
Copy Application to Desktop.....	23
Hot Key.....	23
About.....	24
Exit.....	24
MAC CLIENT UTILITY	25
Launch Application.....	25
Application Control Panel.....	26

Projection Mode Tab	26
Video Mode Tab	27
Menu Functions	28
Show Receiver Information	28
Web Admin.....	28
Search Receiver Device.....	28
Launch SidePad	28
Enable WebSlides	30
Select Projection Desktop.....	31
Projection Quality	31
Projection Mode	31
Resolution Setting	32
Projection Aspect Ratio	32
Auto WiFi Connect	32
Send Audio to Display.....	33
Hot Key.....	33
About.....	33
Exit.....	33

WEB MANAGEMENT 34

Home Page.....	34
Download.....	35
System Status.....	36
Conference Control	37
Admin	38
Device Setup	38
Network Setup.....	39
IP Setup.....	40
DHCP Server Setup.....	40
Wireless Setup.....	40
AP Setup.....	41
Gatekeeper	41
SNMP	41
OSD Setup	42
Change Passwords	43
Reset to Default	44
Firmware Upgrade	45
WebSlides Setup	46
Reboot	47
Logout.....	47

Start WebSlides.....	48
APPENDIX A: USING PTG CONVERTER	49
APPENDIX B: LITESHOW PORT MAP.....	50
APPENDIX C: CONFIGURING LITESHOW FOR SPECIFIC ENVIRONMENTS	51

Overview

With the revolutionary Plug-and-Show wireless projection, QuadView, and wireless projection via PDA, LiteShow makes all of your presentations and meetings more efficient and successful.

Features

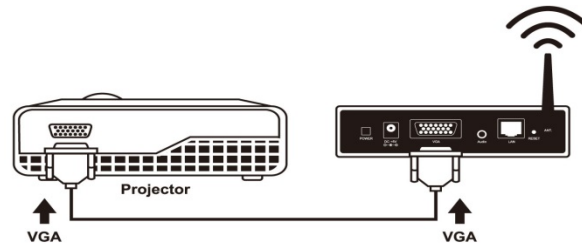
- Compatible with Windows 8, Windows 7, Vista, XP, and Macintosh (Mac) version 10.5 and above
- Plug and Show! Just link your computer to LiteShow (through WLAN or Ethernet); plug the token into a USB port, and in seconds, your screen will be projected wirelessly to your projector!
- QuadView allows up to four computer or PDA screens to be projected on one projector at the same time.
- Web-based conference control
- Session security login, wireless WEP/WPA key and gatekeeper functions protect presentation contents and maintain office network security.
- Media playback feature supports music and video streaming. LiteShow can even handle high-definition video.

What's in the Box

- LiteShow 4 DB+ module
- LiteShow USB token
- Power adapter (DC +5V, 2.5A)
- Antenna (2)
- Mounting hardware
- Quick installation guide with warranty card
- Quick installation guide for mobile applications

Initial Setup

- 1) Connect power to LiteShow module, and connect a VGA cable from the projector to the LiteShow VGA connector. If desired, audio can also be connected to the LiteShow Audio connector.



- 2) Turn on the projector and LiteShow module. Note: When the projector shows the instructions below, LiteShow is ready for use.



- 3) Verify that your computer's wireless connection is enabled and connect to the LiteShow wireless network.
- 4) Open your browser. Although the LiteShow page should display automatically, you can bring up the LiteShow page by entering the IP address displayed on the projector into your web browser.
Note: The default IP address of LiteShow is 192.168.100.10.

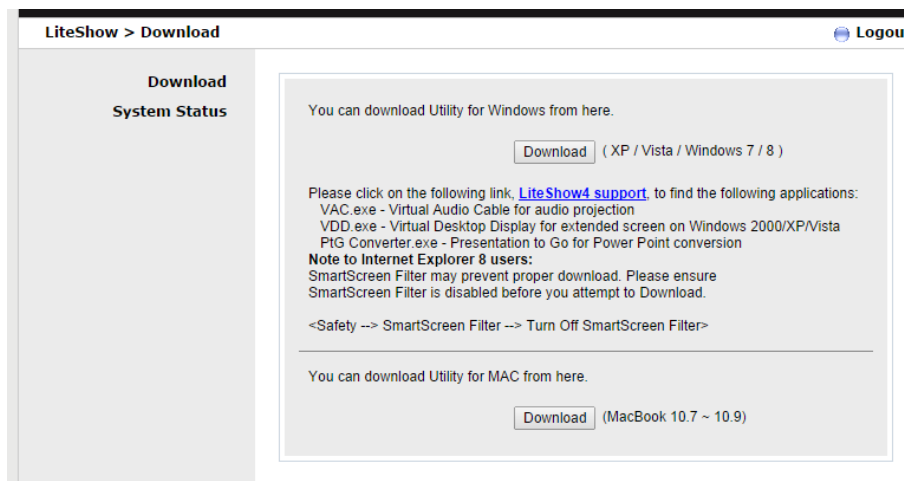
- 5) At the LiteShow login screen, enter one of the following combinations to access the downloadable client software:

Login	Default Password
None	Not applicable – No password required
Basic User	basic
Admin User	admin

Note: If the default password listed above does not work, contact your IT administrator.

- 6) Select the client software that corresponds to your operating system and click **Download** to start the installation program.
- 7) Follow the Installation Wizard instructions.

Note: If a **Windows Security Alert** window displays, click **Unblock** to continue installation.



- 8) Once installation is complete, a LiteShow shortcut will appear on your Desktop.

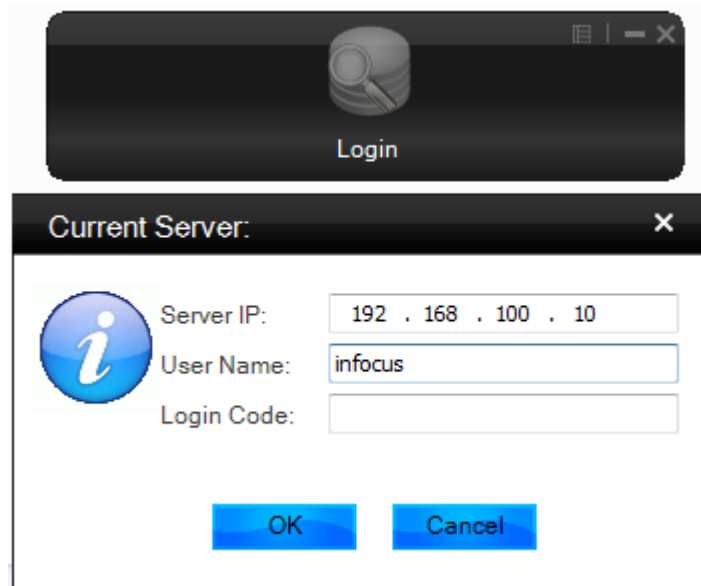
Windows Client Utility

Launch Application

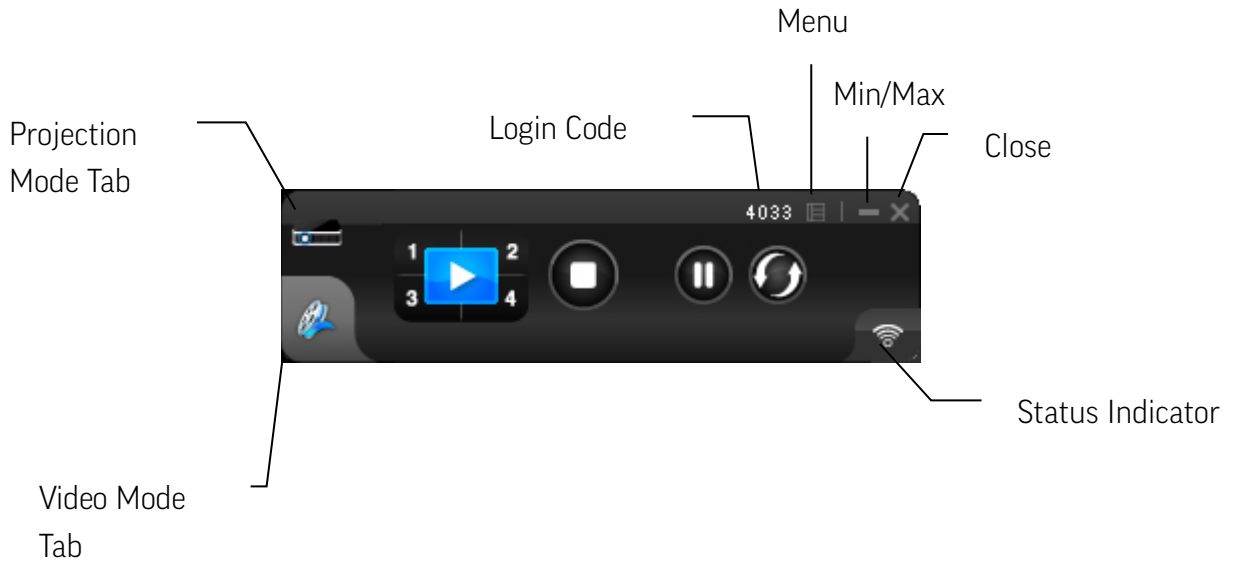
After you successfully download the LiteShow Windows client, follow the steps below to start the program.



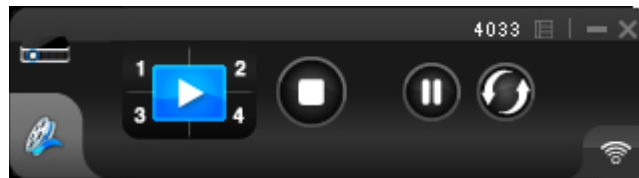
- 1) Click the **LiteShow** shortcut.
- 2) Select the network you want to project over, and then the LiteShow module you wish to use.
- 3) If the LiteShow module is found, a Login Code dialog box displays on your projector.
- 4) Enter the **Login Code** visible on the projector and click **OK**. Your computer screen should begin displaying automatically.
- 5) If the **Login Code** is not visible on the projector, the Login Code has been disabled by your administrator. Click **OK** to proceed.




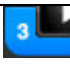






Application Control Panel



Projection Mode Tab

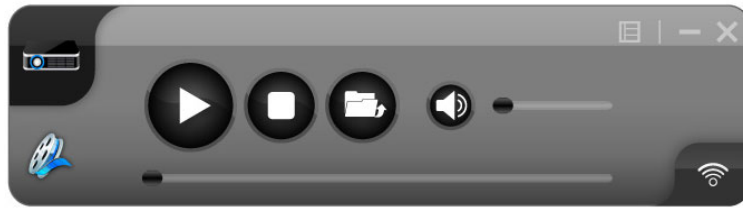






Projection Mode Controls	
	Full Screen projection
	Project to Quadrant #1
	Project to Quadrant #2
	Project to Quadrant #3
	Project to Quadrant #4
	Stop projecting
	Pause projecting
	Refresh projection

Projection Audio Notes:

LiteShow can redirect your computer's audio to the projector using an optional VAC driver. To enable audio projection, you must first install the VAC Setup application (located on the USB token). Once VAC is installed, open the LiteShow application menu, select **Send Audio to Display**, select **Yes**, and restart LiteShow.

Video Mode Tab



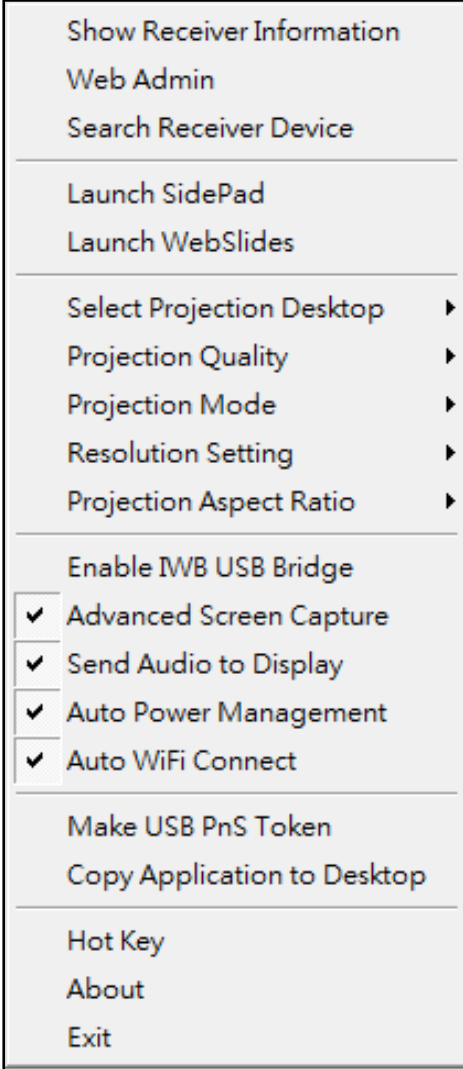
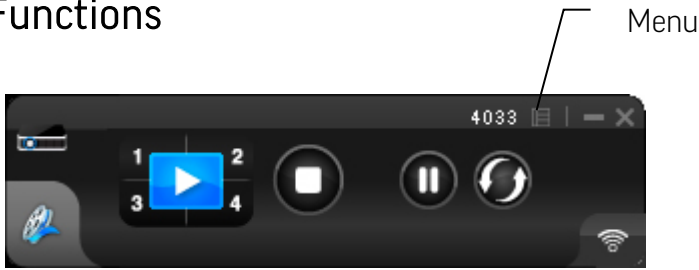
Video Mode Controls	
	Start playing video/music
	Stop playing video/music
	Open video/music file
	Mute
	Volume level
	Progress bar

Video Mode Notes:

Supported formats include: MPEG1/2, DivX(3.4.5), XviD(MPEG4), H.264, WMV9, MP3, WMA.

For higher quality video or music playback, stream the files from your computer to the LiteShow module. Decompression, buffering, and video processing all take place in the LiteShow module reducing the load on your computer and network. Click the **Video Mode** tab to switch to video mode. Choose a video/audio file to begin playback on the screen.

Menu Functions



When you click the **Menu** button shown above, the menu window displayed on the right appears. Click an option to enable/disable a feature or open another submenu.

Show Receiver Information

Displays the receiver information, such as the WiFi name, IP address, and code, in the upper-left corner of the desktop for ten seconds.

Web Admin...

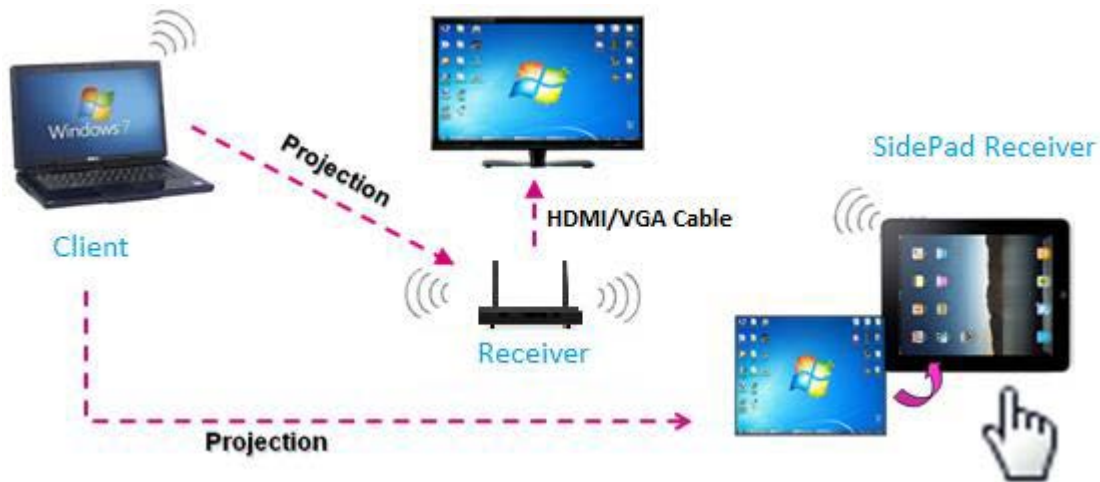
Opens the Web Management login page. See the [Web Management](#) section for more information.

Search Receiver Device

Disconnects the current receiver and searches for the receiver again.

Launch SidePad

SidePad is an application that allows users to connect iPads/Smartphones (Android and iOS), PCs, and displays/projectors via the LiteShow 4 DB+ device. The user can then control the projecting PC via the iPad/Smartphone. See the illustration below.



- 1) Download the software application:
For iOS: Download **SidePad Receiver** from the Apple Store.
For Android: Download **SidePad Receiver** from the Google Play Store.
- 2) Connect your iOS/Android device to the LiteShow 4 DB+ device through WiFi and launch **SidePad Receiver**.



- 3) Click **Launch SidePad** from the menu. In a few seconds, the PC desktop will display on the iOS/Android device. You can now control the PC from your iOS/Android device.



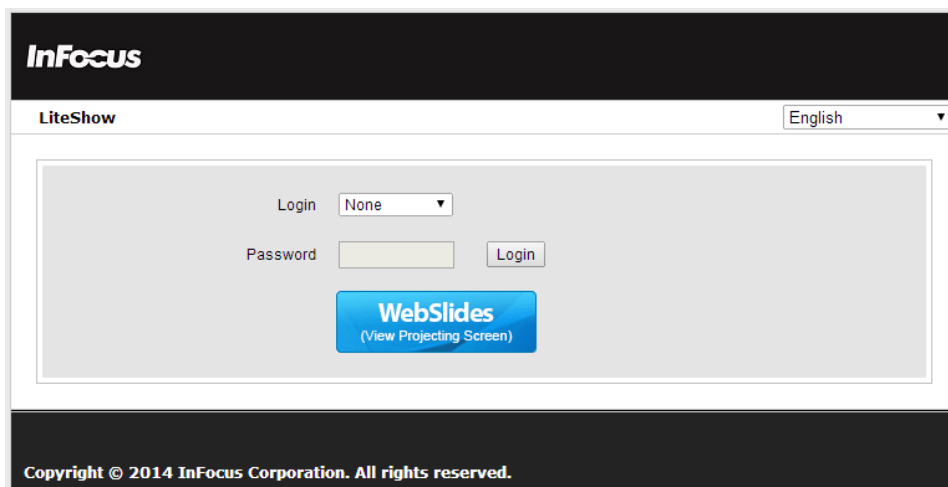
4) If no iPad/Smartphone is detected, the SidePad login screen displays.

Launch WebSlides

WebSlides allows users to broadcast their presentation to up to 64 users simultaneously.

Note: WebSlides is not available when QuadView is in use.

- 1) **Presenter:** Make sure your PC/Mac is connected to LiteShow4 and click **Launch WebSlides**.
- 2) Audience:
 - a. Connect to the LiteShow4 WiFi Network shown on the projector.
 - b. Launch your web browser and enter the LiteShow4 IP address.



- c. Click the **WebSlides** button.

3) The presenter's slides display.



4) Use the toolbar to pause, save, change the aspect ratio, expand, and refresh the presentation window.

Notes:

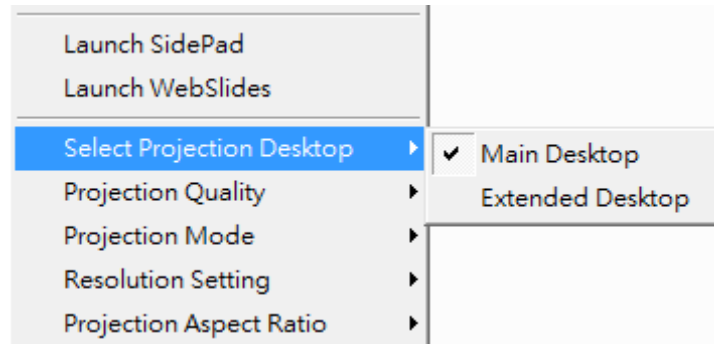
- WebSlides users and users logged into LiteShow4 both consume wireless bandwidth. If more than 10 users are logged into LiteShow4, we recommend connecting LiteShow4 to the company network using Ethernet or a router to ensure best performance.
- We also recommend that Webslides users do not exceed the recommended number specified on the Web Management page.
- Wireless Projection function and Conference Control function can support up to 64 users.

Select Projection Desktop

Allows you to project the main screen or the extended screen.

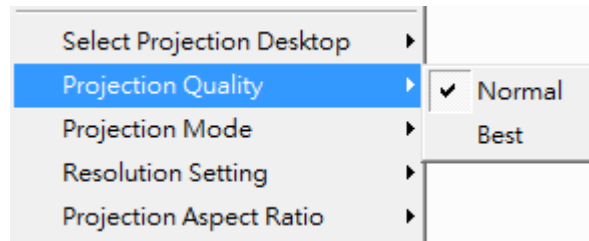
Notes:

- The VDD application (found on the USB token) must be installed on Windows XP computers before the Projection Desktop feature is used.
- Extended display is not supported on computers with Windows 7 and Vista Starter operating systems. In addition, extended display is not supported by all Windows 8 computers, however if the computer can extend its display to an external monitor/device, then it should work with LiteShow4.



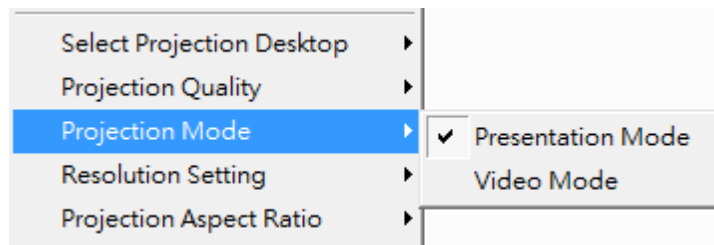
Projection Quality

Allows you to toggle between **Normal** (faster performance and lower image quality) and **Best** (better image quality and slower performance).



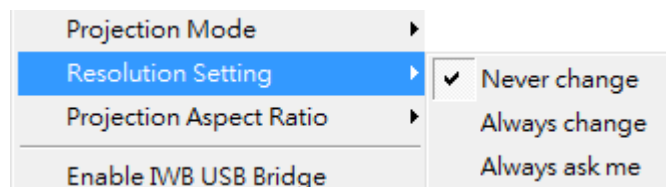
Projection Mode

Allows you to toggle between **Presentation** mode (shortest latency) and **Video** mode (better video performance).



Resolution Setting

Allows you to toggle between **Never Change** (keeps the original desktop resolution), **Always Change** (automatically changes the resolution to match the application's recommended settings), or **Always ask me** (prompts the user to change).



Projection Aspect Ratio

Allows you toggle between **Keep aspect ratio** (keep the original aspect ratio if the desktop resolution is different than the LiteShow4 resolution), and **Fit full screen** (adjusts the image to project full screen).



Enable IWB USB Bridge

This feature enables touch functionality between your LiteShow device and your touch computer/ display.

- 1) Plug in a USB cable from the back port to your touch computer/display.
- 2) Click Enable USB IWB Bridge.
- 3) When the full screen projection is displayed, it will bridge the IWB device to your PC wirelessly.

Notes:

- The UoIP driver (found on the USB token) must be installed first before using this feature.
- The UoIP driver supports standard Win7/8 compatible HID touch devices.
- The front two USB ports do not support UoIP feature.

Advanced Screen Capture

Allows the user to see the layered windows on the connected display. Note: The mouse cursor may blink from time to time when the PC screen is displayed in this mode.

Advanced Screen Capture disabled:



Advanced Screen Capture enabled:



Send Audio to Display

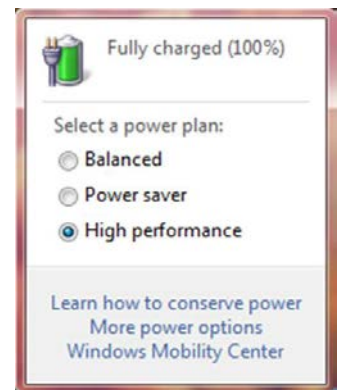
Bridges the audio to your display device, and mutes the local speaker. Audio is restored when the application closes.

Note: For Windows XP only: If you cannot hear the audio, the VAC Setup application (located on the USB token) must be installed on your computer.

Auto Power Management

To optimize projection performance, the LiteShow application will automatically turn the computer's Windows power management settings to **High performance** when the LiteShow Application is enabled.

Note: When the LiteShow application is disabled, the computer's power management settings are unchanged.



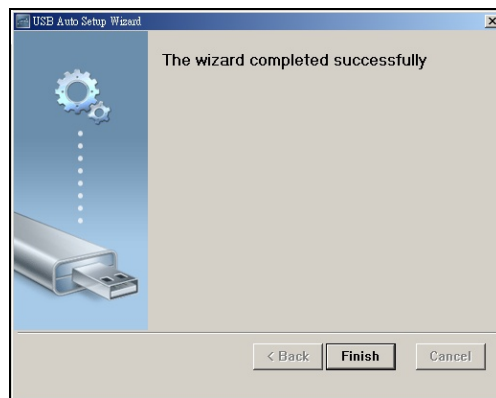
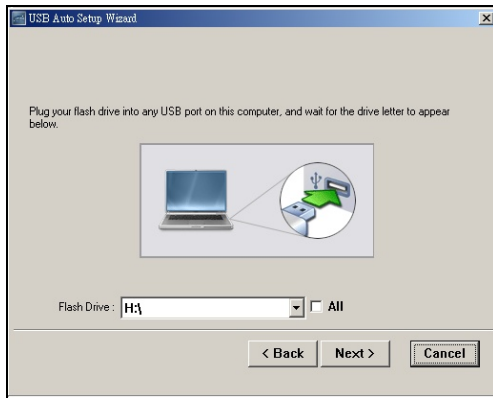
Auto WiFi Connect

When Auto WiFi Connect is enabled, the LiteShow application will search out and list all available wireless networks and automatically switch to the selected network before searching for available LiteShow modules. (Selecting **Skip**, when Auto WiFi is selected, will not modify the computer's existing network connection.)

When Auto WiFi Connect is disabled, the LiteShow application will only search the computer's existing network connection for LiteShow modules.

Make USB PnS token

Creates a duplicate USB LiteShow token. You can insert a USB thumb drive and follow the Setup Wizard to make the token. Users can execute the LiteShow application directly from the token, avoiding the need for guests to install the application.

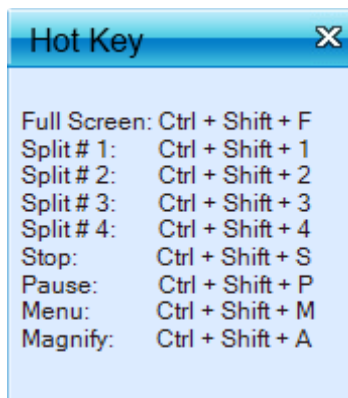


Copy Application to Desktop

Copies the LiteShow application to your desktop. Administrator rights on your computer are not required.

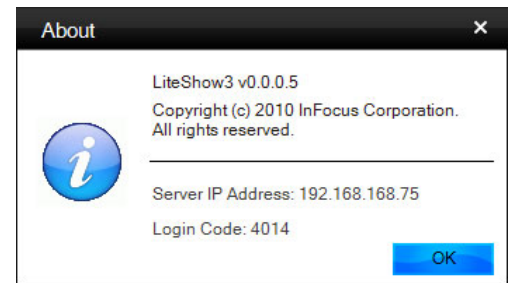
Hot Key

Displays a list of available Hot Keys.



About

Displays system information, including the client version, IP address and login code.



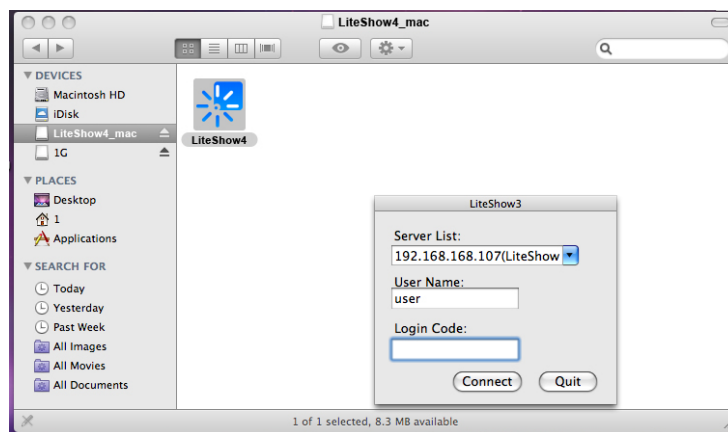
Exit

Closes and exits the LiteShow application. Projection stops immediately.

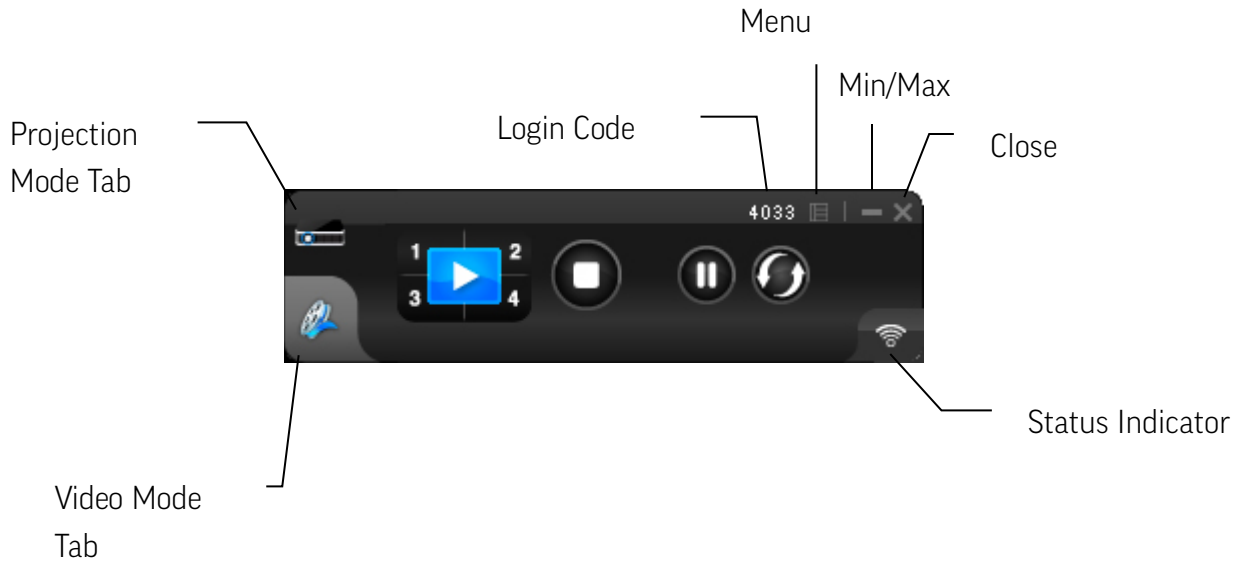
Mac Client Utility

Launch Application

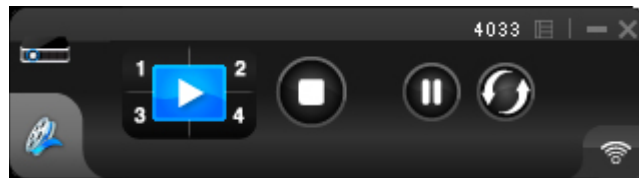
- 1) Click the **LiteShow** shortcut.
- 2) Select the network you want to project over, and then the LiteShow module you wish to use.
- 3) If the LiteShow module is found, a Login Code dialog box is displayed on your projector.
- 4) Enter the **Login Code** visible on the projector and click **Connect**. LiteShow automatically begins displaying your computer screen to the connected projector.






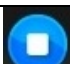




Application Control Panel

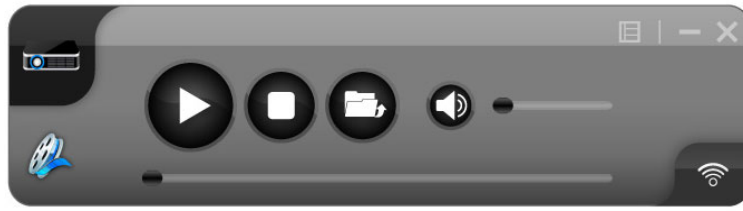



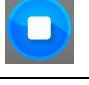
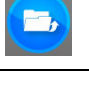



Projection Mode Tab



Projection Mode Controls	
	Full Screen projection
	Project to Quadrant #1
	Project to Quadrant #2
	Project to Quadrant #3
	Project to Quadrant #4
	Stop projecting
	Pause projecting
	Refresh projection

Video Mode Tab



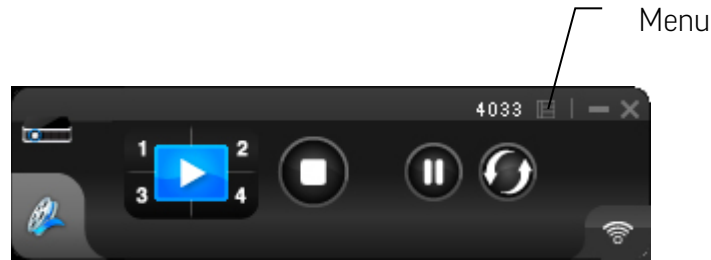
Video Mode Controls	
	Start playing video/music
	Stop playing video/music
	Open video/music file
	Mute
	Volume level
	Progress bar

Video Mode Notes:

Supported formats include: MPEG1/2, DivX(3.4.5), XviD(MPEG4), H.264, WMV9, MP3, WMA.

For higher quality video or music playback, stream the files from your computer to the LiteShow module. Decompression, buffering, and video processing all take place in the LiteShow module reducing the load on your computer and network. Click the **Video Mode** tab to switch to video mode. Choose a video/audio file to begin playback.

Menu Functions



When you click the Menu button shown above, this additional menu window will appear:

Show Receiver Information
Web Admin...
Search Receiver Device
Launch SidePad
Enable WebSlides
Select Projection Desktop ▶
Projection Quality ▶
Projection Mode ▶
Resolution Setting ▶
Projection Aspect Ratio ▶
✓ Auto WiFi Connect
✓ Send Audio to Display
Hot Key
About
Exit

Show Receiver Information

Displays the receiver information, such as the WiFi name, IP address, and code in the upper-left corner of the desktop for 30 seconds.

Web Admin...

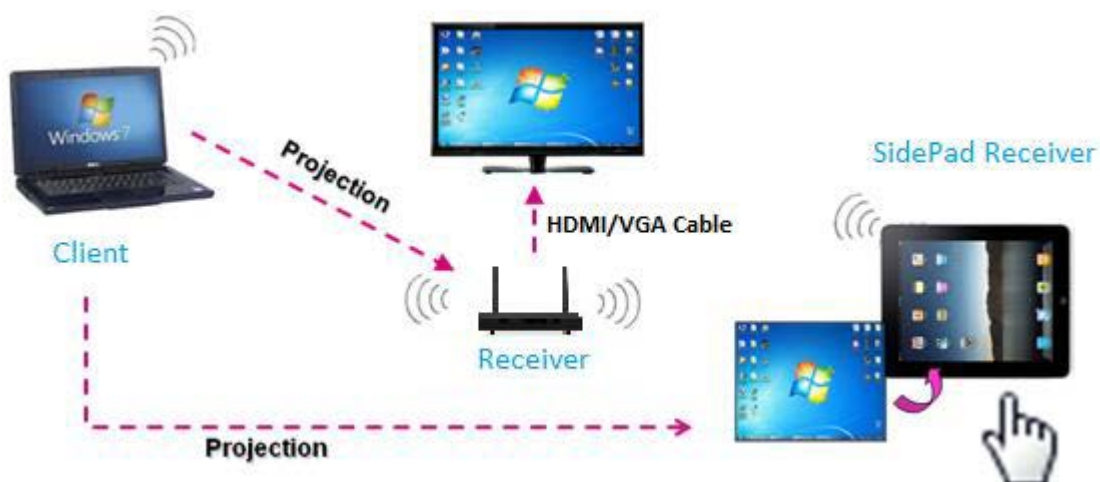
Opens the Web Management login page. See the [Web Management](#) section for more information.

Search Receiver Device

Disconnects the current receiver and searches for the receiver again.

Launch SidePad

SidePad is an application that allows users to connect iPads/Smartphones (Android and iOS), PCs, and displays/projectors via the LiteShow 4 DB+ device. The user can then control the projecting PC via the iPad/Smartphone. See the illustration below.



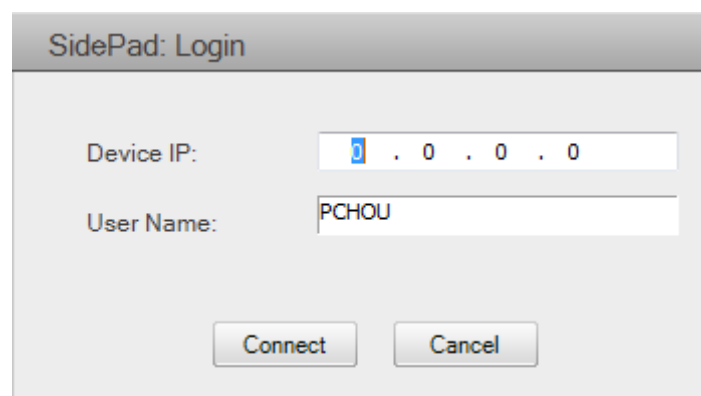
- 1) Download the software application:
For iOS: Download **SidePad Receiver** from the Apple Store.
For Android: Download **SidePad Receiver** from the Google Play Store.
- 2) Connect your iOS/Android device to the LiteShow 4 DB+ device through WiFi and launch **SidePad Receiver**.



- 3) Click **Launch SidePad** from the menu. In a few seconds, the PC desktop will display on the iOS/Android device. You can now control the PC from your iOS/Android device.



- 4) If your device is not detected, the **SidePad Login** window displays:



SidePad: Login

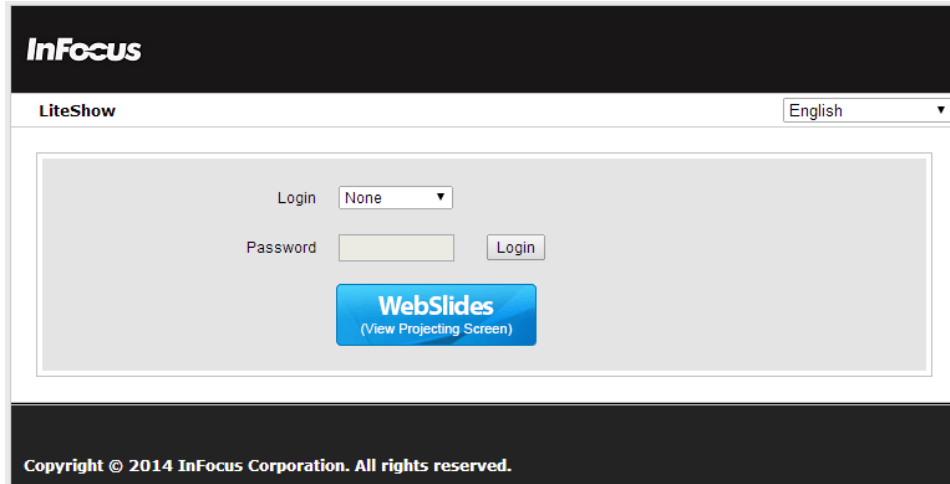
Device IP:

User Name:

Enable WebSlides

WebSlides allows users to broadcast their presentation to up to 64 users simultaneously. Note: WebSlides is not available when QuadView is in use.

- 1) **Presenter:** Make sure your PC/Mac is connected to LiteShow4 and click **Launch WebSlides**.
- 2) Audience:
 - a. Connect to the LiteShow4 WiFi Network shown on the projector.
 - b. Launch your web browser and enter the LiteShow4 IP address.



- c. Click the **WebSlides** button.

- 3) Start to receive the presenter's slides. The below image can be seen on the audience's browser.



4) Use the toolbar to pause, save, change the aspect ratio, expand, and refresh the presentation window.

Notes:

- WebSlides users and users logged into LiteShow4 both consume wireless bandwidth. If more than 10 users are logged into LiteShow4, we recommend connecting LiteShow4 to the company network using Ethernet or a router to ensure best performance.
- We also recommend that Webslides users do not exceed the recommended number specified on the Web Management page.
- Wireless Projection function and Conference Control function can support up to 64 users.

Select Projection Desktop

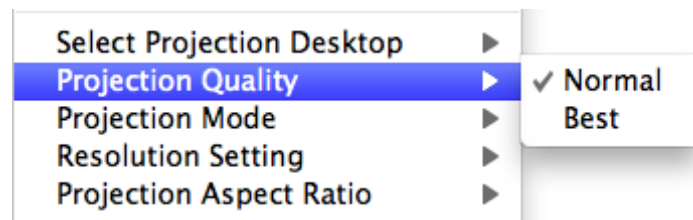
Allows you to project the main screen or the extended screen.

Notes:

- Only Mac 10.7 and above are supported.
- To use the extended screen, install the SVS extended screen driver from the USB token.

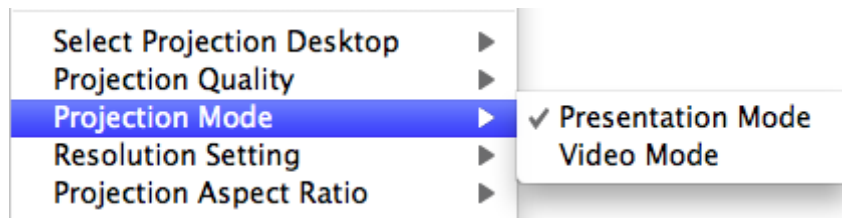
Projection Quality

Allows you to toggle between **Normal** (faster performance and lower image quality) and **Best** (better image quality and slower performance).



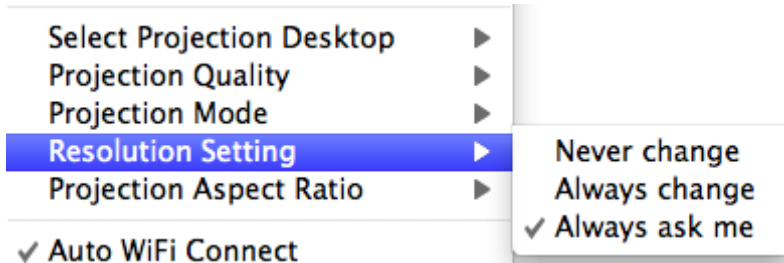
Projection Mode

Allows you to toggle between **Presentation** mode (shortest latency) and **Video** mode (better video performance).



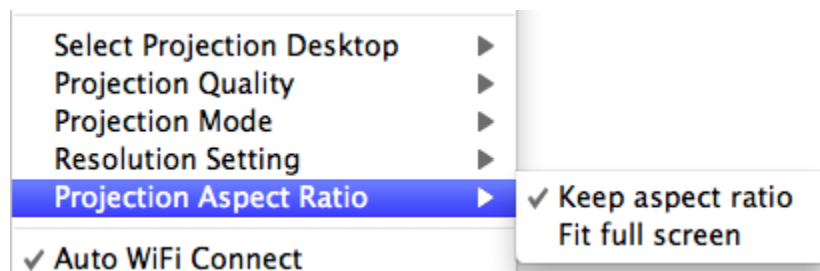
Resolution Setting

Allows you to toggle between **Never Change** (keeps the original desktop resolution), **Always Change** (automatically changes the resolution to match the application's recommended settings), or **Always ask me** (prompts the user to change).



Projection Aspect Ratio

Allows you to toggle between **Keep aspect ratio** (keep the original aspect ratio if the desktop resolution is different than the LiteShow4 resolution), and **Fit full screen** (adjusts the image to project full screen).



Auto WiFi Connect

When Auto WiFi Connect is enabled, the LiteShow application will search out and list all available wireless networks and automatically switch to the selected network before searching for available LiteShow modules. (Selecting **Skip** when Auto WiFi is selected, will not modify the computer's existing network connection.)

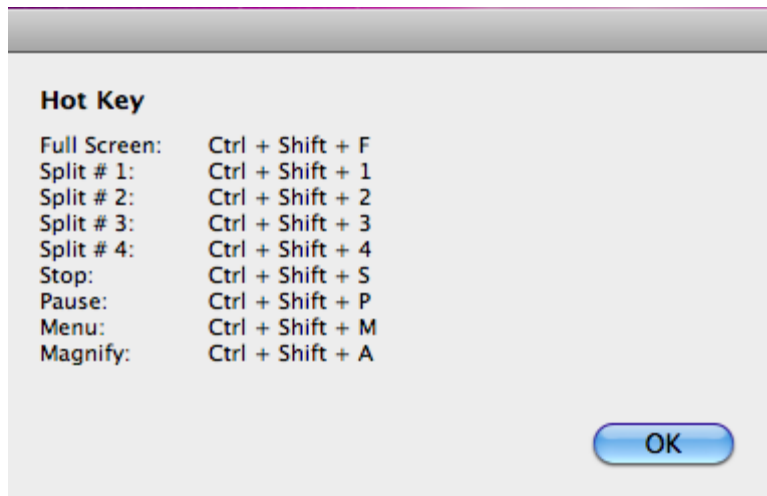
When Auto WiFi Connect is disabled, the LiteShow application will only search the computer's existing network connection for LiteShow modules.

Send Audio to Display

Bridges the audio to your display device, and mutes the local speaker. Audio is restored when the application closes.

Hot Key

Displays a list of available Hot Keys.



About

Displays system information, including the client version, IP address and login code.

Exit

Closes and exits the LiteShow application. Projection stops immediately.

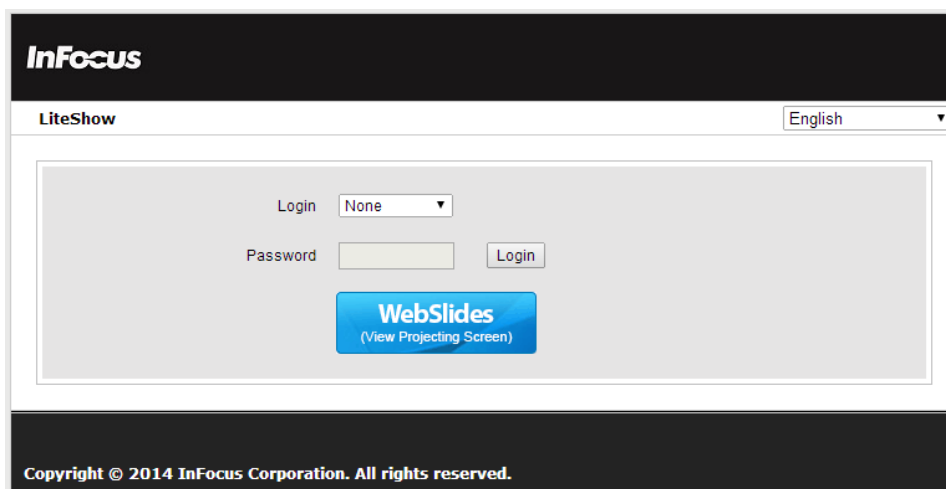
Web Management

Home Page

- 1) Ensure your computer has successfully connected to LiteShow.
- 2) Open your web browser. It should automatically open to the LiteShow home page. If not, enter the IP address shown on the projector screen in your browser window. The default IP is "192.168.100.10."
- 3) At the LiteShow login screen, choose your desired language from the drop-down, and enter one of the following combinations to access associated LiteShow menus:

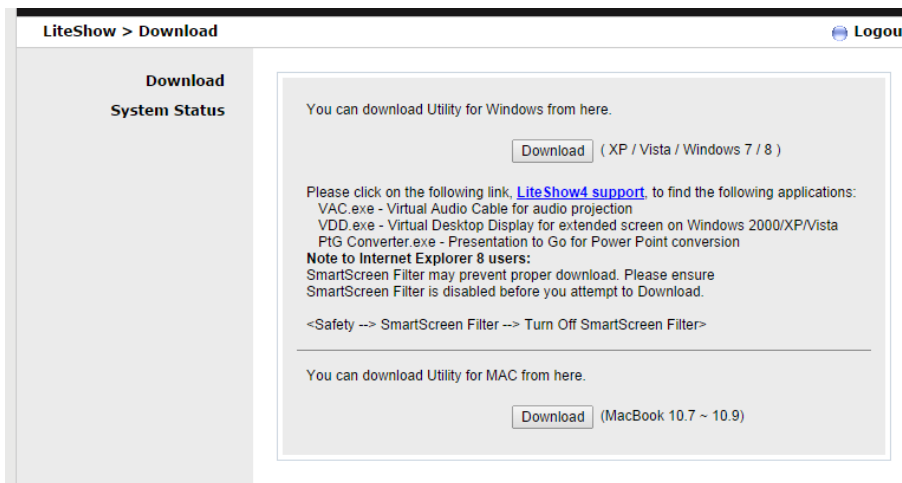
Login	Default Password	Menu Options
None	Not applicable - No password required	Download System Status
Basic User	basic	Download System Status Conference Control
Admin User	admin	Download System Status Conference Control Admin Menu

Note: If the default password listed above does not work, contact your IT administrator.



Download

Available to all users, regardless of which login is used.



- 1) From the **Download** window, select the appropriate client software that corresponds to your operating system, and click **Download** to start the installation program.
- 2) Follow the Installation Wizard instructions.
Note: If a **Windows Security Alert** window displays, click **Unblock** to continue installation.
- 3) Once installation is complete, a LiteShow shortcut will appear on your desktop.

Note to System Administrators: If you save the "LiteShow4.exe" installation file to an accessible folder, you can invoke it in a script as "LiteShow4.exe /VERYSILENT." This causes LiteShow to install without prompts and silently terminate without launching LiteShow at the end of the installation process.

System Status

Available to all users regardless of which login is used. This page displays a variety of network-related information, including the IP address of LiteShow, whether it is currently projecting, and how many users are currently connected to the device.

InFocus

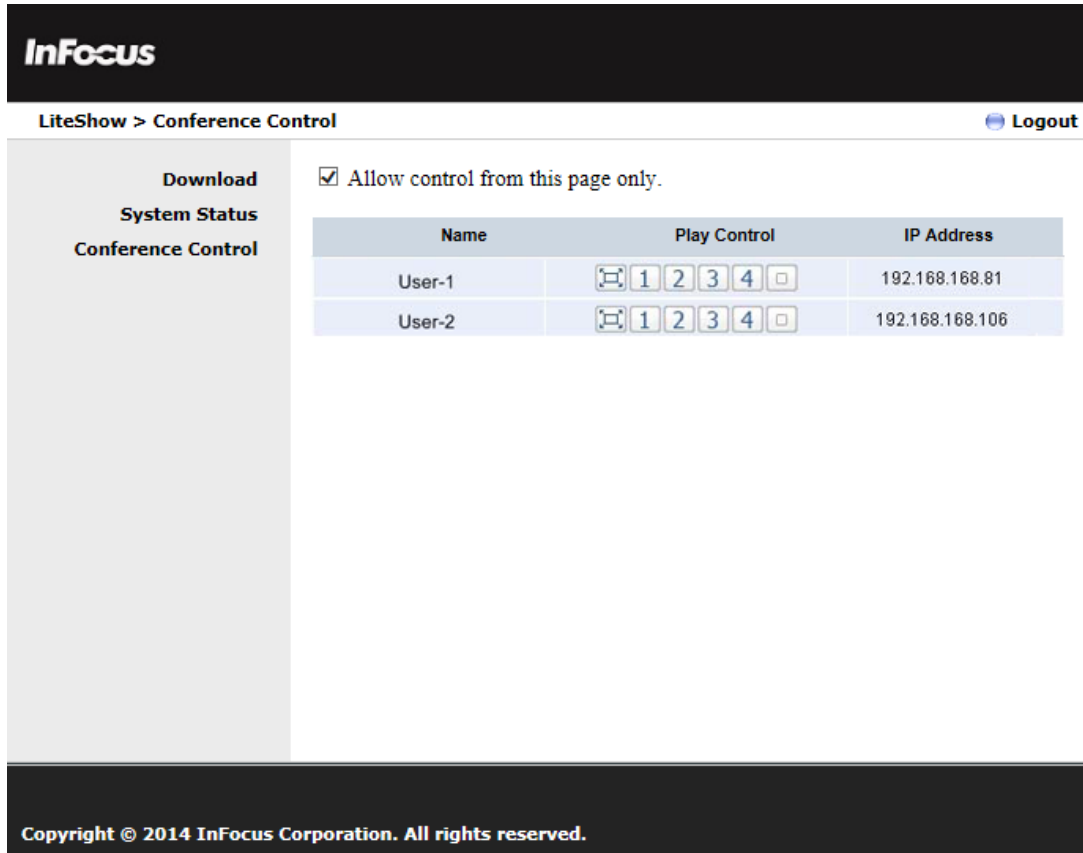
LiteShow > System Status Logout

Download System Status Conference Control Admin	Model Name	LiteShow
	Versions	
	Firmware Version	1.0.0.3
	Network Status	
	IP Address	192.168.100.10
	Subnet Mask	255.255.255.0
	Default Gateway	192.168.100.10
	Wireless MAC Address	00:12:5F:0B:1F:52
	Wire MAC Address	00:12:5F:12:37:89
	Connection Status	
	Projecting Status	Waiting for Projecting
	Total Users	0
	Code	2414

Copyright © 2014 InFocus Corporation. All rights reserved.

Conference Control

Available only to users logged in as either Basic or Admin Users. Conference Control allows you to easily change presenters and to display up to four presentations at one time.



To allow users to project freely: Uncheck the Allow control from this page only box.

To change presenters: Review the available presenters listed under Name and click the Play Control options associated with the desired presenter.

To enable QuadView: Review the available presenters listed under Name and click 1, 2, 3 or 4 in the Play Control options list.

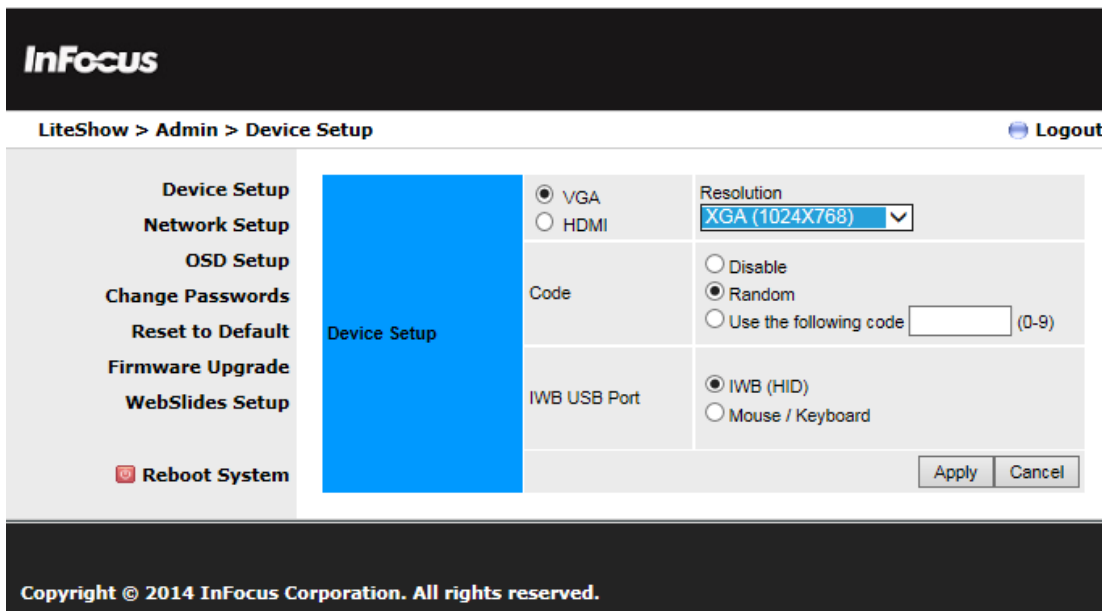
Play Control Options	
	Full-screen presentation
	Displays presentation in Quadrant #1
	Displays presentation in Quadrant #2
	Displays presentation in Quadrant #3
	Displays presentation in Quadrant #4
	Stops presentation

Admin

Available only to users logged in as Admin Users. Clicking on Admin provides additional administrative options.

Device Setup

Allows you to select the input type, the projector's resolution, and IWB USB port, and disable, randomize or apply a static Login Code.



Network Setup

By default, the LiteShow device is a DHCP client. When the LiteShow module is connected to a LAN that already has a DHCP server present, the LiteShow module takes an IP address assigned to it by the server. When the LiteShow module is connected to a LAN that does not have a DHCP server, the LiteShow module becomes the DHCP server in the network.

InFocus

LiteShow > Admin > Network Setup Logout

Device Setup
Network Setup
OSD Setup
Change Passwords
Reset to Default
Firmware Upgrade
WebSlides Setup
Reboot System

IP Setup

Obtain an IP address automatically Use the following IP address

IP Address: 192 . 168 . 100 . 10
Subnet Mask: 255 . 255 . 255 . 0
Default Gateway: 192 . 168 . 100 . 10
DNS Server: 192 . 168 . 100 . 10

DHCP Server Setup

Auto Disable

Start IP: 192 . 168 . 100 . 11
End IP: 192 . 168 . 100 . 254
Subnet Mask: 255 . 255 . 255 . 0
Default Gateway: 192 . 168 . 100 . 10
DNS Server: 192 . 168 . 100 . 10

Wireless Setup

Wireless LAN: Enable Disable
Embedded AP SSID/ NAME: Liteshow4DB
SSID Broadcast: Enable Disable
Band: 2.4 GHz 5 GHz
802.11mode: 2.4G B/G/N mixed
Channel: Auto
Encryption: Disable
Key: Hide characters
Channel Bandwidth: 20MHz Auto

Ap Client

Connect to Existing AP: Enable Disable
Existing AP SSID: InFocus
Scan
Encryption: WPA2 AES
Key: Hide characters

GateKeeper: All Pass All Block Internet Only

SNMP: Enable Disable

Apply Cancel

Copyright © 2014 InFocus Corporation. All rights reserved.

IP Setup

You can select Obtain IP address automatically or Use the following IP address.

IP Address: The default value is 192.168.100.10.

Subnet Mask: The default value is 255.255.255.0

Default Gateway: The default value is 192.168.100.10

DNS Server: Enter the values for your network

DHCP Server Setup

Enable or disable the DHCP server automatically, or disable it altogether.

Start IP: The start IP address of DHCP Server.

End IP: The end IP address of DHCP Server.

Subnet Mask: Enter the values for your network

Default Gateway: Enter the values for your network

DNS Server: Enter the values for your network

Wireless Setup

Wireless LAN: “Enable” or “Disable” the Wireless LAN.

Embedded AP SSID/Name: Type the device name.

SSID Broadcast: SSID string, maximum length is 32 bytes. (No spaces)

Band: Select band on which you want to broadcast. 2.4GHz or 5GHz

802.11 mode: Select wireless protocol. B/G/N mixed, B only, G only, N only, B/G mixed, G/N mixed for 2.4GHz and A/N mix, A only, N only for 5GHz

Channel: You can set fixed channel or choose Auto. After powering on the LiteShow, choosing “Auto” will scan all wireless channels and select one clear channel automatically.

Encryption: Disable or select a wireless encryption preference (WEP/WPA/WPA2 64-bit or 128-bit in ASCII or HEX string).

Key: You can set a fixed channel or choose Auto for 2.4GHz. After powering on the LiteShow, choosing “Auto” will scan all wireless channels and select one clear channel automatically.

Channel Bandwidth: 20MHz or Auto

AP Setup

The AP Setup feature allows LiteShow to connect to the corporate network as a wireless client rather than through the RJ45 wired connection.

Connect to Existing AP: To setup LiteShow as a wireless client, choose “Enable.” Note: Enabling the Wireless Client will disable both the wired RJ45 connection and Gatekeeper (Gatekeeper will be set to “All Pass”). Disabling the Wireless Client will restore the RJ45 wired connection.

Existing AP SSID: the SSID string of the corporate wireless LAN (maximum length 32 bytes; no spaces).

Encryption: the encryption method required to access the corporate wireless LAN (WEP/WPA/WPA2 64-bit or 128-bit in ASCII or HEX string).

Key: the value required to access the corporate wireless LAN. Used only when Encryption is enabled.

Gatekeeper

Designed to ensure enterprise network security.

All Pass: allows Guest Users connected through a wireless connection to access the office network (LAN).

All Block: prevents Guest Users connected through a wireless connection from accessing the office network (LAN).

Internet Only: prevents Guest Users from accessing the office network (LAN), but still allows internet traffic (browser packets i.e. port 80, 443) to pass through.

SNMP

Allows you to enable or disable SNMP services.

OSD Setup

Allows you to customize the LiteShow standby image with a personal image and/or restore the original standby image. In addition, you can control how the device information and screen saver is displayed.

InFocus

LiteShow > Admin > OSD Setup Logout

- Device Setup
- Network Setup
- OSD Setup**
- Change Passwords
- Reset to Default
- Firmware Upgrade
- WebSlides Setup
- Reboot System

Change Standby Image

Image Name: Default

Restore to default

File Name: Browse...

Image File Upload

The image file need to be JPG format and the maximum file size is 5MB.
(Recommended image resolution : 1024X768)

Display Option

Device Information: Show All Hide All

Overlay Device Information: Enable Disable

Screen Saver Settings: Enable Disable

Idle Time (Minutes): 5

Apply Cancel

Copyright © 2014 InFocus Corporation. All rights reserved.

Change Passwords

Allows you to reset the passwords for Basic User and/or Admin User.

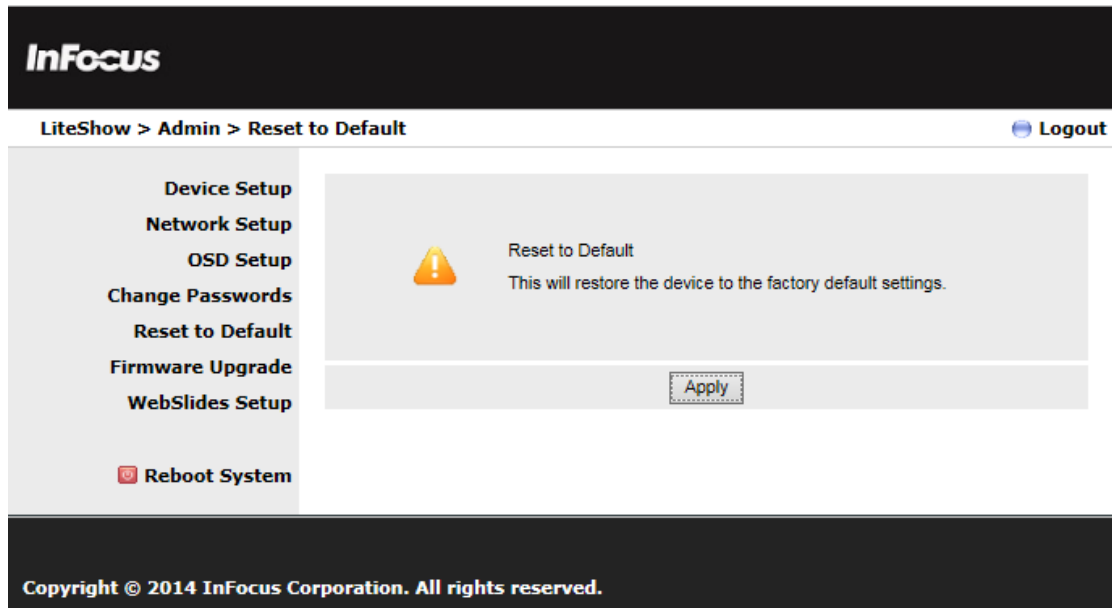
The screenshot shows the InFocus LiteShow Admin interface. At the top left is the InFocus logo. Below it is a breadcrumb trail: LiteShow > Admin > Change Passwords. On the top right is a Logout button. A left-hand navigation menu lists several options: Device Setup, Network Setup, OSD Setup, Change Passwords (which is highlighted), Reset to Default, Firmware Upgrade, WebSlides Setup, and Reboot System. The main content area is divided into two sections: Basic User and Admin User. Each section has two input fields: 'Enter New Password' and 'Confirm New Password', followed by an 'Apply' button. The 'Basic User' section is currently selected and highlighted in blue.

Basic User		
Enter New Password	<input type="text"/>	Apply
Confirm New Password	<input type="text"/>	
Admin User		
Enter New Password	<input type="text"/>	Apply
Confirm New Password	<input type="text"/>	

Copyright © 2014 InFocus Corporation. All rights reserved.

Reset to Default

Restores LiteShow to factory default settings.

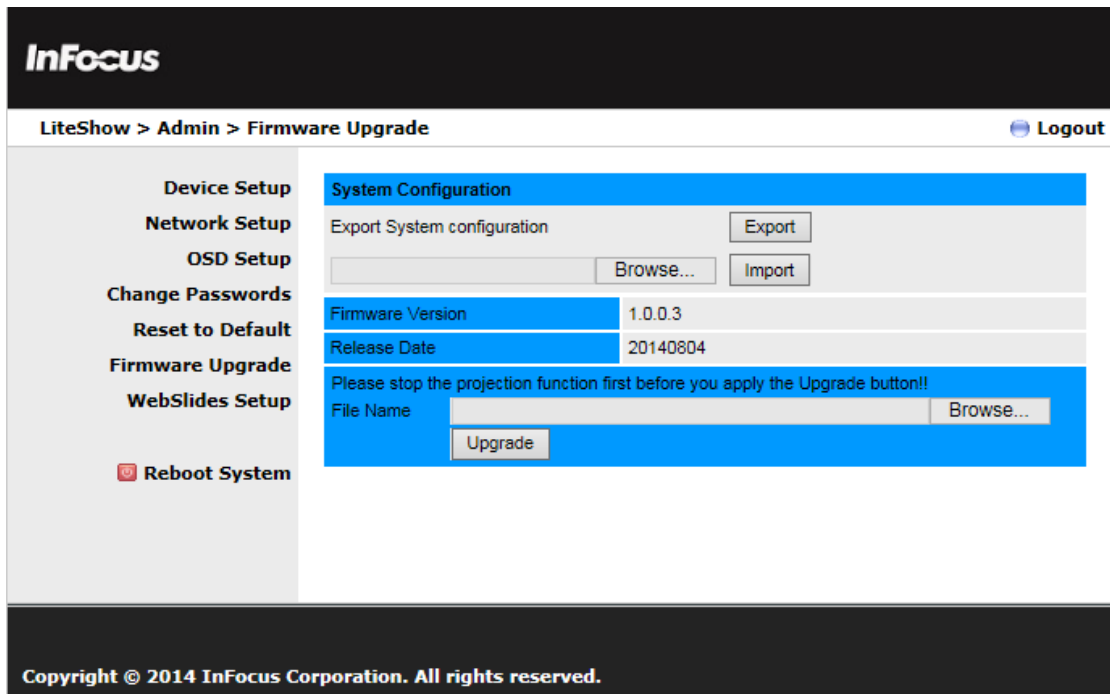


Alternatively, factory default settings can also be restored as follows:

- 1) Turn off the LiteShow module.
- 2) Press and hold the **Reset** button on the bottom of the LiteShow module.
- 3) Turn on the LiteShow module.
- 4) Wait for at least 10 seconds and release the **Reset** button.
- 5) Factory default settings should be restored.

Firmware Upgrade

Used for upgrading the LiteShow firmware and for importing and exporting configuration settings (this is helpful when multiple LiteShow devices are being configured).



To update your LiteShow firmware:

- 1) Connect the LiteShow device to your network RJ45 connector before updating. (Do not update wirelessly.)
- 2) Download the latest firmware image file (*.awd) from the InFocus support site (www.infocus.com/support) to your computer.
- 3) Choose **Firmware Upgrade** from the left-hand menu.
- 4) Click **Browse** and open the firmware image file you previously downloaded to your computer.
- 5) Click **Upgrade**. **Note:** This process will take several minutes.
- 6) After a message appears stating the update has been successful, click **OK** and begin using LiteShow.

WebSlides Setup

Allows you to adjust the Auto Refresh Interval and Access Password Control.

InFocus

LiteShow > Admin > WebSlides Setup Logout

Device Setup
Network Setup
OSD Setup
Change Passwords
Reset to Default
Firmware Upgrade
WebSlides Setup
Reboot System

Auto Refresh Interval (second)

- Manual Refresh
- 10 *recommended maximum concurrent users. (10)
- 20 *recommended maximum concurrent users. (15)
- 30 *recommended maximum concurrent users. (20)
- 45 *recommended maximum concurrent users. (25)
- 60 *recommended maximum concurrent users. (30)
- 90 *recommended maximum concurrent users. (35)

Access Password Control

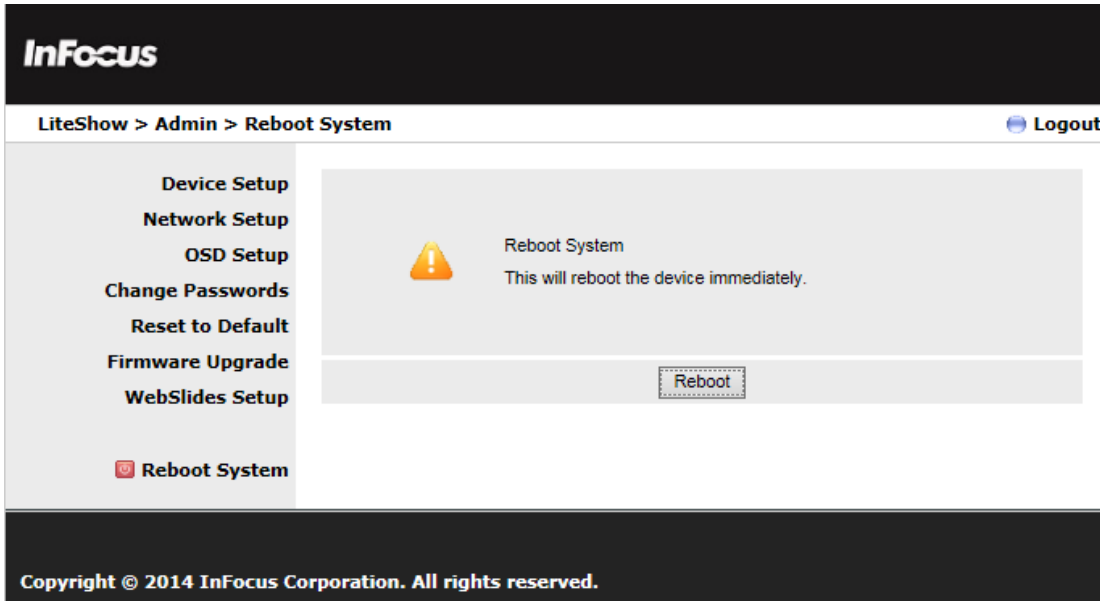
- Disable
- Use the same password as "Code"
- Use the following Code: (0-9)

Note
If there are more than 10 users logged into LiteShow, it is recommended to connect LiteShow to company network through Ethernet or bridge LiteShow to a router due to wireless bandwidth concern. User should connect LiteShow via company network or router in order to secure the projection performance.

Copyright © 2014 InFocus Corporation. All rights reserved.

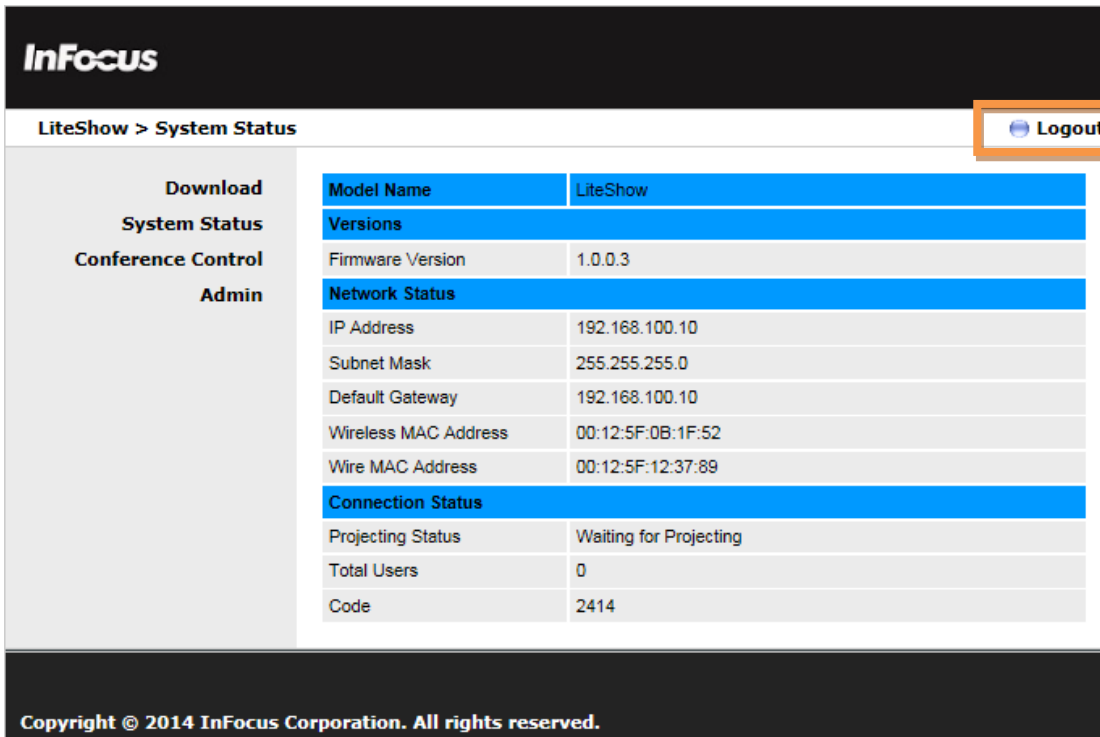
Reboot

Restarts the LiteShow system.



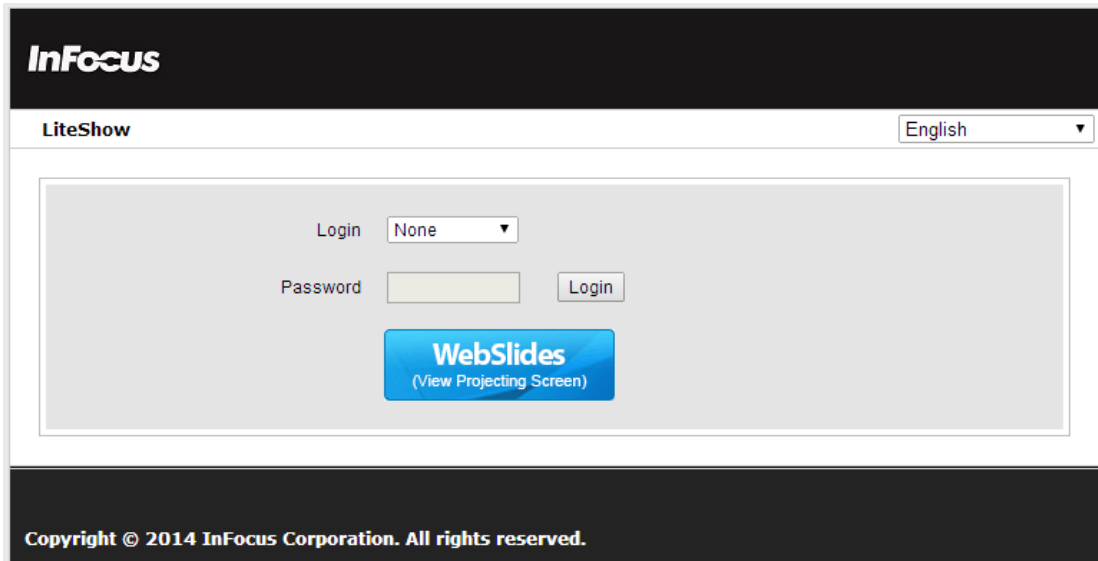
Logout

Exits the LiteShow web page.



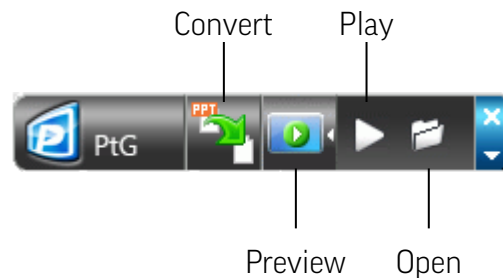
Start WebSlides

Click the **WebSlides** button to start the WebSlides feature. See the [Launch WebSlides](#) section for more information.



Appendix A: Using PtG Converter

- 1) Download the PtG Converter application from the LiteShow USB token or from the InFocus website at: www.infocus.com/support.
- 2) Once installed, the converter will reside in the MobiShow\MobiShow PtG Converter folder within Programs.
- 3) Launch the PtG Converter and the following control panel will display:



- 4) Click **Convert** to select and start conversion of the desired PowerPoint presentation. PtG Converter will convert the PowerPoint file to a PtG format. **Note:** Before clicking **Convert**, turn off all extended monitors. Only the primary monitor should be active to ensure proper PtG conversion.
- 5) After successfully converting the file, you can use any of the following controls:
 - a. **Preview** expands and collapses the preview pane.
 - b. **Play** plays the selected PtG file.
 - c. **Open** allows another PtG file to be opened.

Appendix B: LiteShow Port Map

LiteShow uses the following ports for network traffic. It may be necessary for the network administrator to configure the network to pass broadcast packets on ports 1047, 1048, and 1049 to enable the LiteShow application to correctly discover LiteShow modules on a complex network.

Usage	Port#		
TCP	Command	443	Both
		3268	Both
		389	Both
	Data	8080	Both
		31865	Both
		515	Both
	Audio	1688	Both
	Video	1041	Both
	DLNA	2869	Both
		49152	Both
		49153	Both
	Activation function	8000	Both
UDP	Device Discovery	1047	Inbound
		1048	Inbound
		1049	Inbound
	DLNA	1900	Both
		50000~65000	Both
TCP	VoIP	3240	Both
		6000	Both
	Conference control	19996	Both
UDP	Device Discovery	1047	Inbound
		1048	Inbound
		1049	Inbound
	NetBIOS name service	137	Both
	SNMP	161	Both

Appendix C: Configuring LiteShow for Specific Environments

Profiles and Menu Options allow the user/administrator to customize LiteShow startup behavior for particular situations. Here are some examples:

PC always connects to the same display

Create and save a profile for the display. Turn on Auto Profile Connect. Turn off Auto WiFi Connect, if you will access the display over your normal network connection. Use Auto Change PC Resolution to set a default action and avoid repetitive startup prompts.

PC connect to a limited number of displays

Create and save a profile for each display – use a descriptive name for each profile. Turn off Auto WiFi Connect, if you will access the display over your normal network connection. Use Auto Change PC Resolution to set a default action and avoid repetitive startup prompts.

Running LiteShow on a PC where System Folders are locked down by IT

Run LiteShow from the USB token. From the LiteShow menu, select Copy Application to Desktop. Place the resulting LiteShow4 folder anywhere in your Documents folder structure and put a link to the LiteShow4.exe program somewhere easy to find. Then run LiteShow from that folder and configure it normally – LiteShow will store and use configuration information in the startup folder when it is not installed in the System Program Files structure.

Locking a USB token to a specific Display

When you run LiteShow from a USB token, it will store and use configuration information in the startup folder on the USB token. To create a token locked to a specific display, run LiteShow from the token and follow the same steps as above for “PC always connects to the same display.” Network connect configuration will be stored on the token and applied at startup. Separate tokens can be configured for employees and guests to reflect appropriate connection strategies as defined by the administrator.

Rolling out Custom Configurations to Large Installs

Rollout using a script which invokes “LiteShow4.exe /VERYSILENT” to cause LiteShow to install without prompts and exit after install is complete. Use the same script to distribute custom wps.ini (configuration) and profile.ini (saved profiles) into the <User>\Appdata\LiteShow4 folder. Both .ini files are simple text files. Username in profile.ini, for example, can be customized by the rollout script.