



United States
Department of
Agriculture

Forest
Service

October 2014



Transportation Specialist's Report

Four Forest Restoration Initiative

Coconino and Kaibab National Forest

Coconino County, Arizona

Prepared by: *Isi Dick Fleishman*

Dick Fleishman
Assistant Team Leader
Four Forest Restoration Initiative

TABLE OF CONTENTS

Contents

Background	4
Regulatory Authority.....	4
Laws	4
Regulations.....	5
Other Authorities	5
Changes from Draft to Final EIS	6
Desired Condition	7
Purpose and Need.....	7
Alternative Descriptions	7
Alternative A	8
Alternative B-E	8
Affected Environment.....	9
Environmental Consequences	11
Alternative A	11
Direct and Indirect Effects.....	11
Cumulative Effects.....	11
Alternatives B-E.....	12
Direct and Indirect Effects.....	12
Cumulative Effects	17
Summary of Alternatives by Units of Measure.....	20
Resource Protection Measures.....	21
Data.....	23
Experience.....	23
APPENDIX A. Road Decommission, Unauthorized Route and Temporary Roads Adaptive Management Plan	25
APPENDIX B- Roads to be Decommissioned.....	28
APPENDIX C- Roads that will be used in the Project Area	35
APPENDIX D Road Rights-of-Way.....	62
REFERENCES.....	65

Background

The Coconino and Kaibab National forests have identified the needed road system for public and administrative motorized use through the Travel Management Rule (TMR) process., the Coconino NF conducted seven formal Roads Analysis Processes (RAPs) including the forest-wide RAP for Passenger Car Roads (MLs 3, 4 and 5), the East Clear Creek RAP, the Anderson Mesa RAP, and the Mountaineer RAP, Southeast RAP, Fossil Creek RAP and NW Rap. With the exception of the forest-wide RAP for passenger car roads, the RAPs identified resource risks and access benefits associated with all roads and were used for NEPA project specific road decisions and included all maintenance level of roads (1-5). The forest-wide RAP for Passenger Car Roads (MLs 3, 4 and 5) was used for the Forest-wide TMR process. Resource risks included impacts to soil and water resources and watershed function from roads that are eroding and contributing sediment, as well as wildlife, threatened and endangered species habitat, and impacts to cultural resources. As part of the risk/benefit evaluation process, the RAPs identified roads that should be closed to public travel, decommissioned, or considered for other uses because they were no longer needed to meet resource management objectives (USDA 2010). These data informed a Forest-wide TAP that was completed in January of 2010 (USDA, 2010).

The Kaibab NF completed a Travel Analysis Process (TAP) report on the Tusayan district in 2008 (USDA 2008) and on the Williams district in 2010 (USDA 2010a). Similar to the Coconino process, the TAPs identified resource risks and access benefits associated with roads. National Environmental Policy (NEPA) decisions were completed for each of these units, with the dates of decisions outlined in the table below.

Table 1. Travel Management Decision Documents for the 4FRI Planning Area

NEPA Document	Type of Decision Document	Date of Decision
Coconino National Forest Travel Management Environmental Impact Statement	Record of Decision	9/28/2011
Environmental Assessment (EA) for the Williams Ranger District of the Kaibab National Forest Travel Management Project	Decision Notice/FONSI	7/9/2010
Environmental Assessment (EA) for the Tusayan Ranger District of the Kaibab National Forest Travel Management Project	Decision Notice/FONSI	1/31/2011

Information and recommendations from previous travel analyses as well as Decisions made in the TMR processes on the Coconino and Kaibab NFs are carried forward into the 4FRI project.

Regulatory Authority

Laws

1. National Forest Roads and Trails Act of October 13, 1964, as amended (16 U.S.C. 532-538). Authorizes road and trail systems for the national forests. Authorizes granting of easements across NFS

lands, construction and financing of maximum economy roads (FSM 7705), and imposition of requirements on road users for maintaining and reconstructing roads, including cooperative deposits for that work.

2. Highway Safety Act of 1966 (23 U.S.C. 402). Authorizes state and local governments and participating federal agencies to identify and survey accident locations; to design, construct, and maintain roads in accordance with safety standards; to apply sound traffic control principles and standards; and to promote pedestrian safety.

3. Surface Transportation Assistance Act of 1978, as amended (23 U.S.C. 101a, 201-205). Supersedes the Forest Highway Act of 1958. Authorizes appropriations for forest highways and public lands highways. Establishes criteria for forest highways; defines forest roads, forest development roads and forest development trails (referred to as “NFS roads” and “NFS trails” in Forest Service regulations and directives); and limits the size of projects performed by Forest Service employees on forest roads. Establishes the Federal Lands Highway Program.

4. Organic Administration Act of 1897 (16 U.S.C. 551). This act authorizes the regulation of national forests.

Regulations

1. Travel Management (36 CFR Part 212, Subparts A). Subpart A of these regulations establishes requirements for administration of the forest transportation system, including roads, trails, and airfields, and contains provisions for acquisition of rights-of-way. Subpart A also requires identification of the minimum road system needed for safe and efficient travel and for administration, utilization, and protection of NFS lands and use of a science-based roads analysis at the appropriate scale in determining the minimum road system. 2. Prohibitions (36 CFR Part 261, Subpart A). These regulations establish prohibitions on use of NFS lands, including prohibitions on possession and operation of motor vehicles on NFS roads, on NFS trails, and in areas on NFS lands.

3. Sale and Disposal of National Forest System Timber (36 CFR Part 223). These regulations govern road construction related to Forest Service timber sale appraisals and contracts.

Other Authorities

1. Forest Service Directives. Direction on travel analysis, resides in chapters in FSM 7710, and FSH 7709.55. Direction on management and maintenance of NFS trails resides in FSM 2350 and FSH 2309.18, and direction on management and maintenance of roads resides in FSM 7730 and FSH 7709.59. Direction on law enforcement activities resides in FSM 5300 and FSH 5309.11. This project will not be making any travel management decisions that were decided in the tow Forest’s respective TMR decisions.

3. Memorandum of Understanding Between the Forest Service and the Bureau of Land Management on Rights-of-Way and Road Use. The MOU includes provisions for granting temporary and long-term rights-of-way between the agencies. The MOU provides for a license agreement to be issued to timber and mineral purchasers of one agency using roads under the jurisdiction of another agency (FSM 1531.12f and 5465.1).

Changes from Draft to Final EIS

As a result of extensive collaboration over an 8-month timeframe and additional analysis, the proposed action was modified as allowed by 36 CFR 220.7(b)(2)(iii), which states that “the description of the proposal and alternative(s) may include a brief description of modifications and incremental design criteria developed through the analysis process to develop the range of alternatives considered.”

Minor modifications to the proposed action included incorporating the stakeholder-developed Old Tree Protection Strategy (with some modifications) into alternative C, correcting vegetation, habitat, old growth, and road acreages or miles, finalizing forest plan amendments, and developing the adaptive management and monitoring, and implementation plan.

Since the DEIS, other projects that affect the road system within the 4FRI boundary have been completed or address roads separately. The Kelly Trails project and the Flagstaff Watershed Protection Project reduce the total miles of road decommissioning within the 4FRI project boundary by approximately 45 miles from what was proposed in the draft environmental impact statement. Table 2 below displays the changes.

Table 2. Changes in road decommission miles from the draft EIS to the final EIS (Coc NF)

Change	Rationale	Miles
Open Roads Added to Proposed Decommission List in FEIS		1.8
FS 133A	Correction after Kelly Trails Decision	1.8
Roads Removed from Proposed Decommission List in FEIS		46.7
Decommission in DEIS are now decommissioned in Kelly Trails	Kelly Trails NEPA decision	2.2
Decommissioned in DEIS is now an Open Road in Kelly Trails	Kelly Trails NEPA decision	0.6
Decommissioned in DEIS is now converted to a trail Road in Kelly Trails	Kelly Trails NEPA decision	7.7
Decommission in DEIS, now open road	Errata Correction	8.7
Decommission in DEIS, now removed from the project area	Removal of Flagstaff Watershed Protection Project from analysis area	21.6
Decommissioned in DEIS, now removed because is outside Project Area	Errata Correction	3.7
Decommissioned in DEIS, now removed because is a System Motorized Trail	Errata Correction	2.2
Total Reduction in Road Decommissioning		45.0

Additional mitigation measures have been added in response to comments concerning temporary roads and an additional category for temporary roads has been added to Appendix A for adaptive management on temporary roads. Additional discussion related to existing road right-of-ways was

added to the affected environment section. Additional discussion of alternative A effects that highlight that there still are activities outside of this project occurring, as well as additional cumulative effects for Alternative A have been updated. A table of all the roads that will be used in the analysis area was added as Appendix C.

Desired Condition

The desired condition for roads within the analysis area is to have a system of roads that will provide access the project area, while minimizing impacts to natural and cultural resources. For system and unauthorized routes that have been determined to be not within the respective Travel Management Planning NEPA documents for the Coconino and Kaibab National Forests, the desired condition is to have these roads in a naturalized condition within 10 years (ie decommissioned).

Purpose and Need

There is a need to have adequate access to the project area for implementation of proposed activities. A portion of the open, existing road system that would be used to access the project has resource and human safety concerns. In some parts of the project area, there are no existing roads that could provide adequate access to treatments because they don't exist or are in very poor locations, or the existing roads that are in place are managed as closed. There is a need to upgrade roads (improve drainage, improve site distance, maintain road surface, etc.) which have resource or human safety concerns, construct temporary roads, and temporarily open existing closed roads. Once the project is completed, there is a need to decommission the temporary roads and re-close roads.

In addition to the need for providing access for project implementation, there is a need to decommission and restoring road prisms of unneeded roads (as possible and practical) to a more natural condition. Decommissioning may include restoration of natural drainage patterns and also moves the Forest towards a more cost effective road system.

There is a need to decommission approximately 677 miles¹ of existing system and unauthorized roads on the Coconino National Forest. These roads are not proposed for designation for public motorized use or currently needed for administrative use on the Coconino NF. A review of Kaibab NF data indicates approximately 134 miles of unauthorized roads (often referred to as user-created routes) are recommended for decommissioning.

Alternative Descriptions

The following are descriptions of the alternatives in relation to the transportation system.

¹ The original Proposed Action that was scoped in March of 2011 had a total of 941 miles of road needed for decommissioning on the Coconino and 170 miles of decommissioning on the Kaibab. These mileages were changed to 722 miles needed on the Coconino and 134 miles on the Kaibab. The 722 miles on the Coconino were further reduced by 45 miles from the draft EIS to the final EIS.

Alternative A

Alternative A is the no action Alternative.

Alternative B-E

Alternative B, C, D, and E have the same needed road system, even though there are differences in the acres of mechanical treatment between the Alternatives. Alternatives B and D have the same acres of mechanical treatment (about 385,000 acres). Alternative C has an increased acreage in grassland restoration and a decrease in mechanical acres in research watershed, but proposes the most mechanical treatment acres (about 431,000 acres). Alternative E removes all forest plan amendments which removes savanna treatments (about 403,000 acres of mechanical treatments).

The DEIS as scoped in May of 2013 is listed below. Under this Alternative, the following road related activities are proposed:

- Decommission 941 miles of existing system and unauthorized roads on the Coconino NF
- Decommission 170 miles of unauthorized roads on the Kaibab NF
- Construct 46 miles of temporary roads for haul access and decommission when treatments are finished
- Reconstruct 27 miles of existing open roads for to mitigate negative impacts to natural resources and user safety concerns.
- Open 183 miles of existing closed roads in order to conduct treatments and decommission (rehabilitate) as needed when treatments are finished.

The road miles that are carried forward into Alternatives B-E for the final EIS were refined through additional analysis to the following miles (see Table 2 above for the rationale for the changes the DEIS to the present road miles).

- Decommission a total of about 860 miles of roads and include the following:
 - Decommission 726 miles of existing system and unauthorized roads on the Coconino NF
 - Decommission 134 miles of unauthorized roads on the Kaibab NF
- Construct about 520 miles of temporary roads that include the following:
 - Construct 253 miles of temporary roads and decommission when treatments are finished
 - Construct 268 miles roads that have been previously closed/decommissioned as temporary roads in order to conduct treatments and decommission when treatments are finished.
- Relocate up to 10 miles of existing open roads for natural resource concerns.

The rationales for refining the mileage from the DEIS for Alts B-E are disclosed in the changes from Draft EIS to Final EIS section above.

In addition to the actions stated above, there are about 2,218 miles of Forest Service system roads that are to be used for haul routes and approximately 49 miles of Federal, State and County roads that are within the project boundary and will be used for haul for a total of 2,267². Haul routes are identified as primary (arterial) roads and secondary roads (collector roads). As a general rule, primary haul routes are roads that have an Operational Road Maintenance Level of 3 or greater, however approximately 10% of

² The 2,218 miles of Forest system roads, plus the 49 miles of roads from other jurisdictions, plus the 520 miles of temporary road equal a total of approximately 2,787 miles of road necessary to fully implement this project.

the primary haul routes are level 2 roads. Secondary haul routes generally have a maintenance level of 1 or 2, as well as are temporary roads. Approximately 42 miles of existing system road haul routes are decommissioned after use. The table below displays the route numbers and approximate miles of system roads that are decommissioned after use as a haul route (these miles are a subset of the 677 miles of road to be decommissioned on the Coconino NF that is listed above and are not a “new” or “different” category of decommissioned road).

Table 3. Coconino NF System Haul Roads that are decommissioned after Use

Road Number	Miles	Road Number	Miles	Road Number	Miles
522	2.3	6391	1.7	06077D	0.4
655	0.6	9021	0.3	09001G	1.5
703	1.4	9411	1.3	09002G	1.1
6015	1.9	9474	0.5	09003F	0.2
6028	0.7	9480	0.3	09003S	2.4
6224	0.7	00003P	1.2	09004F	2.0
6227	0.8	00078C	0.7	09004H	1.7
6275	3.2	00132B	1.6	09006E	1.2
6353	2.1	00235J	1.2	09007G	0.6
6354	1.4	06028B	1.1	09009K	2.2
6357	1.9	06077C	0.8	09021A	0.6
SUM	17.1		10.7		13.8
TOTAL					41.6

Affected Environment

Currently, there are approximately 4,278 miles of system roads within the 988,000 acre project area that are managed under Forest Service jurisdiction³ (see Appendix C for a list of the Forest Service Roads within the project area). Of these, approximately 3,334 are open system roads and 944 miles are closed system roads. In addition to the roads that are currently managed by the Forest Service, there is an additional approximately 374 miles of unauthorized roads that have been identified within the analysis area, for a total of approximately 4,652 miles of roads on Forest Service lands within that analysis area. The maps and the table below display the miles of road by operational maintenance Level⁴.

³ Roads under Forest Service jurisdiction are roads that are identified within the Forest Service INFRA database. This mileage does not include US interstate and highways, state, county or private roads that occur within the approximately 989,000 acre project boundary.

⁴ Operational maintenance level is defined as the level of service provided by, and maintenance required for, a specific road, consistent with road management objectives and maintenance criteria. (FSH 7709.58, 12.3)

- Maintenance Level 1.** Assigned to intermittent service roads during the time they are closed to vehicular traffic. The closure period must exceed 1 year. Basic custodial maintenance is performed to keep damage to adjacent resource to an acceptable level and to perpetuate the road to facilitate future management activities. Emphasis is normally given to maintaining drainage facilities and runoff patterns. Planned road deterioration may occur at this level. Roads receiving level 1 maintenance may be of any type, class or

Table 4. Operational Maintenance Level Road System for the 4FRI Planning Area

Type of Road	Miles
1 - BASIC CUSTODIAL CARE (CLOSED)	943.9
2 - HIGH CLEARANCE VEHICLES	2,677.0
3 - SUITABLE FOR PASSENGER CARS	479.6
4 - MODERATE DEGREE OF USER COMFORT	90.6
5 - HIGH DEGREE OF USER COMFORT	86.4
Unauthorized Roads	374.0
Grand Total	4,651.5

Not all of the 4,278 miles of open road within the 988,000 acre analysis area will be needed for removal of forest products. A haul route analysis identified approximately 2,218 miles of existing open Forest Service road necessary for removal of forest products after harvest.

There are an additional 49 miles of roads directly identified within the project area that are of managed by other jurisdictions (6 miles of State Highway and 43 miles of County Roads). An additional 635 miles of other jurisdiction roads are located directly adjacent or bisect the project area and a portion of these roads are likely to be used for haul, depending on where products are hauled to for manufacturing and/or shipping. Of the 635 miles there are 290 miles of Federal Highways, there are 159 miles of State Highways, and multiple County Roads totaling 186 miles. In addition, Coconino County has maintenance agreements on multiple Forest Service roads within the project area. These will be analyzed within the cumulative effects section below. The Slide fire burned through a small portion of the analysis area in May of 2014. The following roads have high severity burn in and around the road: 535A 0.3 miles, 9114E 1.0 miles, 9114F 0.3 miles, 9114G 1.3 miles and 9114J 0.1 miles.

construction standard, and may be managed at any other maintenance level during the time they are open for traffic. However, while being maintained at level 1, they are closed to vehicular traffic, but may be open and suitable for non-motorized uses. (FSH 7709.58, 12.3)

- **Maintenance Level 2.** Assigned to roads open for use by high clearance vehicles. Passenger car traffic is not a consideration. Traffic is normally minor, usually consisting of one or a combination of administrative, permitted, dispersed recreation, or other specialized uses. Log haul may occur at this level. (FSH 7709.58, 12.3)
- **Maintenance Level 3.** Assigned to roads open and maintained for travel by a prudent driver in a standard passenger car. User comfort and convenience are not considered priorities. Roads in this maintenance level are typically low speed, single lane with turnouts and spot surfacing. Some roads may be fully surfaced with either native or processed material. (FSH 7709.58, 12.3)
- **Maintenance Level 4.** Assigned to roads that provide a moderate degree of user comfort and convenience at moderate travel speeds. Most roads are double lane and aggregate surfaced. However, some roads may be single lane. Some roads may be paved and/or dust abated. (FSH 7709.58, 12.3)
- **Maintenance Level 5.** Assigned to roads that provide a high degree of user comfort and convenience. These roads are normally double-lane, paved facilities. Some may be aggregate surfaced and dust abated. (FSH 7709.58, 12.3)

The project contains a total of about 306 miles of roads that contain rights-of-ways (ROW) through private, state or county inholdings (see Appendix D for a list of roads). Of these, about 101 miles are right-of-ways granted to the Forest Service from landowners. The remaining 205 miles are public right-of-ways granted through county or state road easements. The existing ROW is currently sufficient to implement the project. If during implementation additional ROW is identified as needed, additional NEPA will be required.

Environmental Consequences

The analysis will focus on two items related to the purpose and need of the project. First, the analysis will disclose how the needed access to the analysis area by alternative in order to implement the proposed action. The unit of measure will be miles of system road and miles of temporary road. Second, the analysis will disclose how each alternative moves towards a safe and more affordable transportation system that is identified within each Forest's respective TAP documents. The unit of measure will be a measure of the miles of decommissioned roads and miles of open road as set forth in each Forest's respective TMR decisions (this measure will disclose how many miles of the TMR decision will be implemented), and the miles of road maintenance for road safety. The timeframe for the analysis will be the life of the project (about 10-15 years).

Alternative A

Direct and Indirect Effects

Under Alternative A, current road management would continue on the two Forests, including implementing the TMR open road system. There is not a need to implement a transportation system to implement the proposed action, however, the transportation system will be adequate to access the analysis area as defined in each Forest's respective TMR decisions for both the short-term (current to 10 years) and long-term (greater than 10 years from current). Approved NEPA projects will continue under the current Forest Plans, of which there are about 31 miles of temporary roads may be constructed and up to 223 miles of roads are approved for road decommissioning. Additional NEPA analyses is necessary to carry out additional on-the-ground closure activities, therefore this Alternative does not move begin to implement towards a safe and more affordable road system. Road maintenance will continue, primarily on Maintenance Level 3-5 roads, as well as a limited basis on Level 2 roads.

Cumulative Effects

There are about 21 miles of proposed temporary roads and about 33 miles of roads proposed for decommissioning in future and foreseeable projects, that will be added to the about 31 miles of temporary roads may be constructed and up to 223 miles of roads are approved for road decommissioning under current and ongoing projects. This alternative will not add any additional road related activities; hence there are no cumulative effects over and above the actions that have signed NEPA decisions or future and foreseeable decisions that are being proposed outside of this project.

Alternatives B-E

Direct and Indirect Effects

The following describes the effects of road treatments that occur on roads within the analysis area.

Road Treatment Summary

- Reconstruction/maintenance of open, existing roads may include road blading, culvert installation, culvert replacement, spot surfacing and gravelling (surfacing is either imported from off-site or created locally from small road side borrow sources), and removal of vegetation from the road edge for improved site distance on the roads. This activity is expected to occur on approximately 2,218 miles of Forest Service road. This is expected to be completed in association with contracts to remove wood biomass on the mechanical harvest acres that are proposed under this EIS, but can be done with Forest Service personnel as well. The 2,218 miles of haul route reconstruction/maintenance, in combination with the 520 miles of temporary road, does provide for full access to the area to be able to implement the proposed action during the life of the activity. In addition, there is a short-term benefit for a safer transportation system through improved surfacing, improved site distances and signage during the life of the project. If the roads are not on a long-term maintenance schedule, the effect to the safety of the transportation system will decrease as drainages and road surfaces continue to degrade. A long-term maintenance schedule after the life of this project for roads is outside the scope of this analysis. Additional analysis in response to comments of looking at treatment to the low end of the HRV on about 38,260 acres in Alternatives C and E has not changed the need for a transportation system, thus has not changed effects for roads related to this analysis.

An indirect effect of the proposed thinning activities is the removal of vegetation to improve site distance. This effect will decrease over time as vegetation re-established itself, however, the desired condition is for an open stand condition and these effects will be effective for both the short and a portion of the long-term. Routine maintenance activities that occur during the life of this project will also maintain site distances.

Roads can have many negative effects of forest resources. The negative effects of roads on soil and water resources, wildlife and fisheries (please see soil specialist report, the water quality/riparian specialist report, the wildlife specialist report, and the fisheries specialist report for full disclosure of the negative effects of roads) are decreased during this action through the maintenance of drainage structures, but this action does not remove roads, thus there still is harassment to wildlife from the road remaining in place.

The spot surfacing and gravelling component of this activity will require the use of a local rock source (either commercial or rock sources on Forest Service land), but will not deplete all available rock sources

Figure 1. Existing Road System for the 4FRI Planning Area-South Half

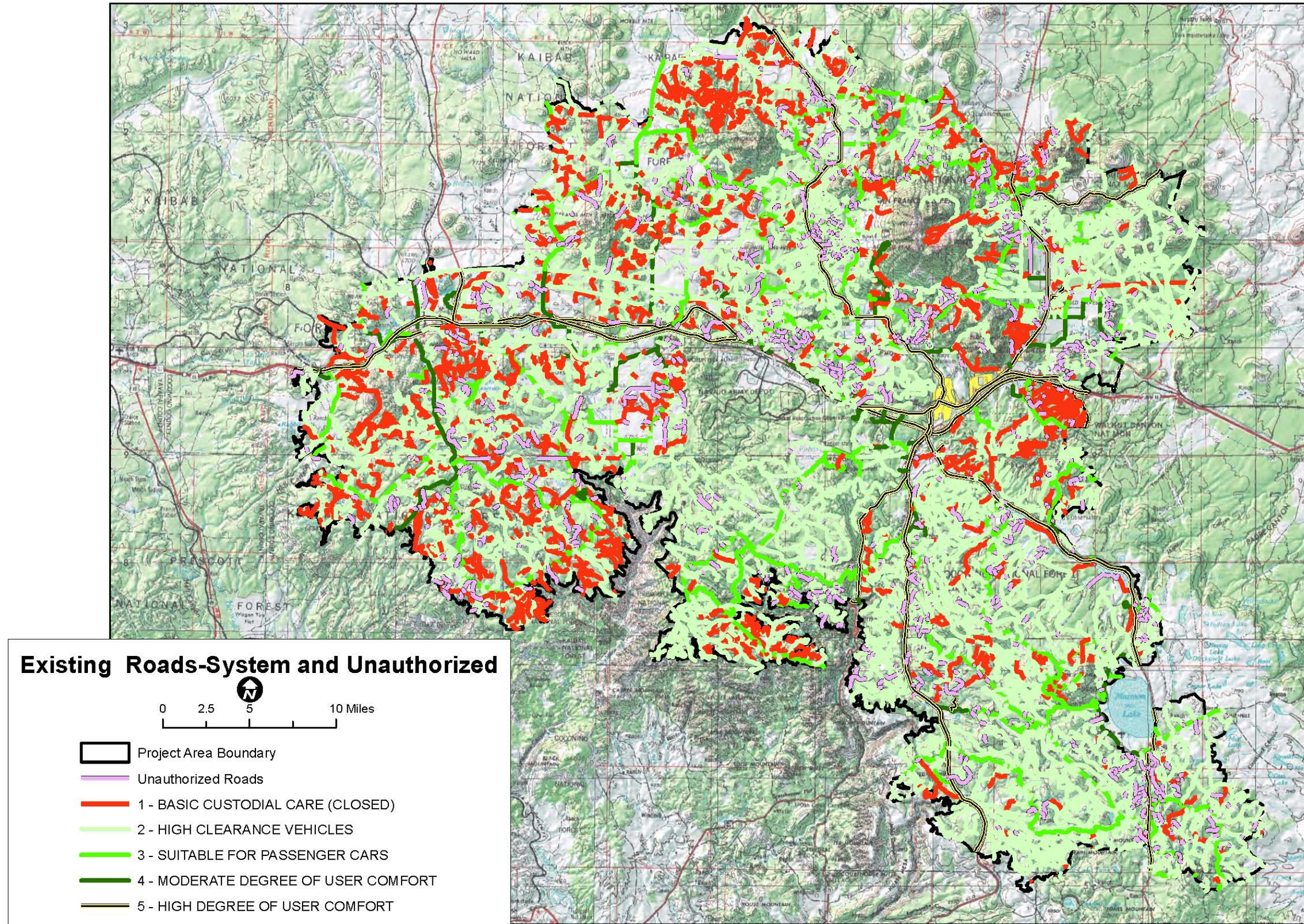
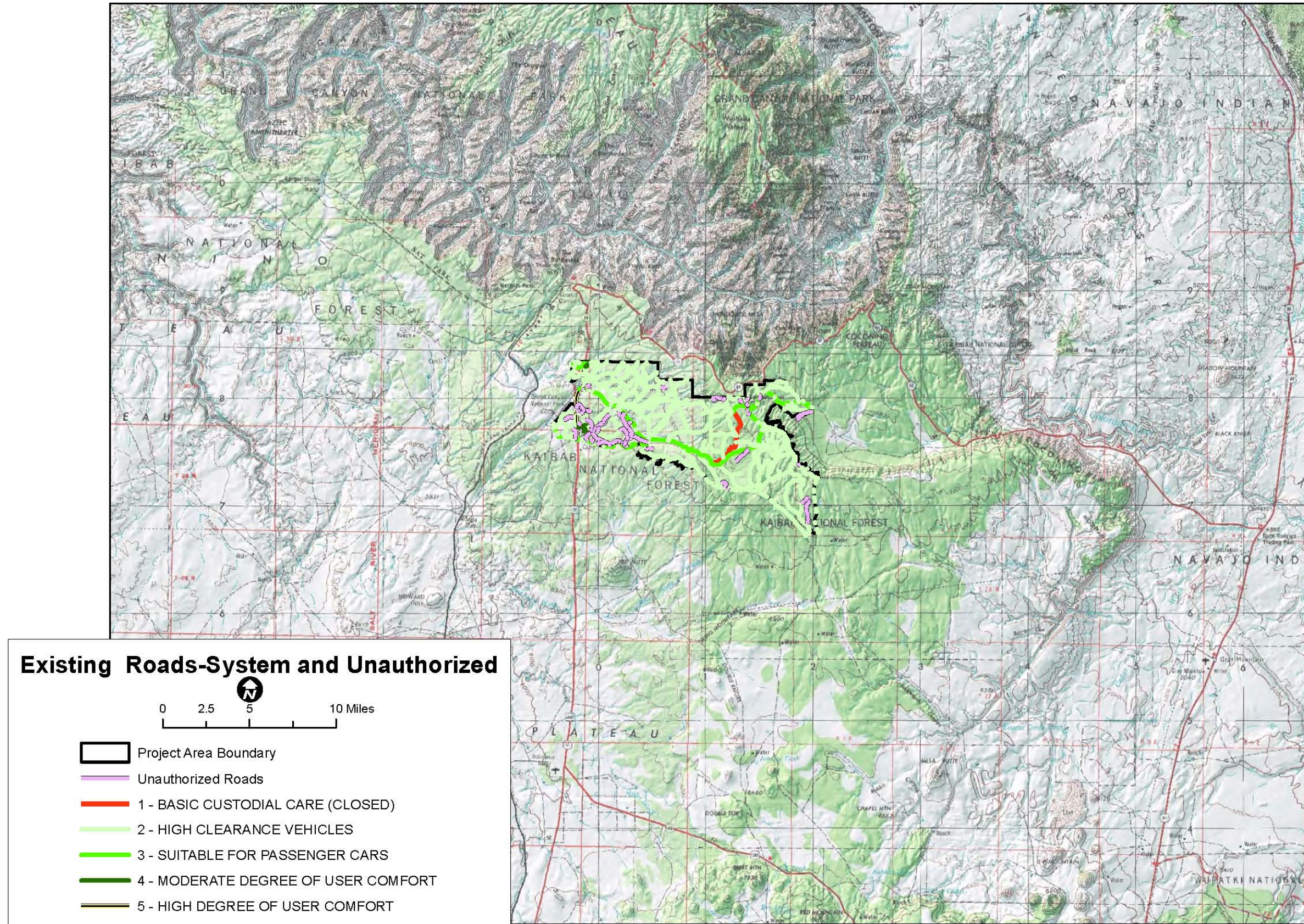


Figure 2. Existing Road System for the 4FRI Planning Area-North Half



in or adjacent to the project area. The total amount of material necessary is not quantifiable at this time but will be identified with specific road packages as projects are implemented. There will be energy use necessary for this activity for equipment to be able to maintain roads and haul trucks to transport material. The amount of energy use will be minimized for haul needs of material by utilizing the closest pit available for the material type needed for the project.

- Road reconstruction/relocation in the vicinity of ephemeral, intermittent, and perennial streams would be designed to lessen the impact on these stream courses. Approximately 10 miles of road within the project area will have road relocation treatment. The desired condition for stream road segments is to have ephemeral, intermittent, and perennial water courses slow the speed of water flow, have access to the flood plain, transport sediment, and maintain longer sustained base flows on the landscape, rather than a flush of peak flows. Floodplains are functioning and lessen the impacts of floods on human safety and health. Relocating steep road pitches and relocating short segments of roads to improve turn radii will decrease maintenance costs and improve site distance on roads. Road reconstruction/relocation may include the road relocation out of drainages, relocating short segments of steep pitched roads to a lower gradient, relocating a short segment of road to improve turn radii, construction of rock rip-rap, the installation of new culverts, and the construction of low water crossings.

As stated above, roads can have many negative effects of forest resources. The negative effects of roads on soil and water resources from a poorly located road in drainages are mitigated with the road activity, but again, this action does not remove roads, thus there still is harassment to wildlife from the road remaining in place.

This activity does have limited effect to the needed transportation system for access because the existing transportation system could be utilized in place, but does provide a related short-term and long-term benefit to soil and water effects that are discussed within the soil and water specialist report. The reconstruction away from streams does have a slight major improvement in the ability to maintain roads, and such, will provide a short-term and long-term benefit to an more affordable and safe road system on approximately 10 miles of road within the analysis area. Reconstruction/relocation by definition will require the use of a local rock source (either commercial or rock sources on Forest Service land), but will not deplete all available rock sources in or adjacent to the project area.

Temporary and closed system roads that are constructed and opened for treatment purposes would be used during project implementation to provide for access to the area to implement the proposed action. This occurs on approximately 520 miles (253 miles of temporary roads and decommission when treatments are finished and 268 miles of existing system roads that have been previously closed/decommissioned as temporary roads that are opened and decommissioned after use) and is primarily a short-term effect that occurs during the first 10-years of the project. A small, unquantifiable portion of this effect is expected to occur after a 10-year timeframe due to implementation timeframes associated with contracts. Effects to soil and water resources, wildlife, as well as recreation resources are expected to occur during this timeframe and are discussed within the respective specialist reports. Temporary roads may have fewer adverse effects than do permanent roads, depending on the extent to

which they are decommissioned (Gucinski et al, 2001:31). Temporary road construction will be governed by contract specifications to minimize the time that the roads are in place (Resource Protection Measure #T10) and resource impacts to soil and water, wildlife and recreation resources and will utilize design features within these specialists' reports to minimize impacts to the respective resources.

Once treatment has occurred, temporary roads would be decommissioned. Unneeded Closed (ML 1) roads would be decommissioned as needed and returned to a more natural state. Decommissioning of system roads and unauthorized routes will use an adaptive management framework that is outlined in the table in Appendix A below, and will also utilize design features outlined in the soil and water specialist report. This occurs on approximately 520 miles of temporary roads within the analysis area, and approximately 42 miles of system roads within the analysis area. The decommissioning of 42 miles of current system roads on the Coconino National Forest begins to move the road system towards a more affordable transportation system. Again, the bulk of this work is expected to occur in the short-term of the first 10 years of the project. The 42 miles of decommissioned system road is a long-term beneficial effect and is moving towards a more affordable transportation system as defined by the minimum open road system.

- Decommissioning does occur on approximately 860 miles of road in these alternatives. This activity occurs after the removal of forest products and does not have an effect on having a transportation system in place to provide access for implementation. This action has a short-term negative effect to wildlife during implementation from the harassment from implementation and to soil and water and aquatic resources from the ground disturbance associated with decommissioning activities. In the long-term decommissioning removes the road bed, decreasing the negative effects of sedimentation, compaction, and hydrologic affects and removes the disturbance to terrestrial wildlife from open roads. This activity removes the long term maintenance need and costs associated with 860 miles of roads, thus moving towards a more sustainable and affordable road system.

There may be a negative effect to access for implementation of prescribed burning in Alternatives B, C and E on approximately 860 miles of roads for both the short term and the long term and an indirect effect to implementation if roads slated for decommission are to be used as firelines/containment lines for prescribed burns (primarily long-term effect on maintenance due to the timeframe for naturalization of decommissioned roads is 10 years). In Alternative D, the acres of prescribed burning is decreased, and the corresponding road mileage that would be used to access prescribe burn sites is decreased to about 225 miles of road that can affect access for implementation. Alternative D also has an indirect effect to implementation if roads slated for decommission are to be used as firelines/containment lines for prescribed burns on about 225 miles of road slated for decommissioning. The decommissioning of about 860 miles of road do have a short term and long term positive effect on creating a safe and more affordable transportation system.

In summary, the effects of increased amount of road maintenance on 2,218 miles of open roads are a short term improvement in access to implement the project, as well as providing for a safe transportation system in the short term. There will still be negative affects to other resources from the

road. The maintenance will minimize sediments from the existing system, but not completely remove the road as a source of sediment. The potential for harassment to wildlife from roads still exists under the road maintenance activity. The reconstruction of 10 miles of roads out of stream channels will have a short-term and long-term improvement in a safe and more affordable transportation system on about 3 miles, and will directly remove roads out of stream channels, thus decreasing sediment production at these sites. The construction, use and decommissioning of about 520 miles of temporary road will be necessary to effectively implement the proposed action and is primarily a short-term benefit from a transportation standpoint, but will be a short-term negative effect to other resources until the road is decommissioned after use. The decommissioning of 860 miles of road does move toward a more economic and efficient road system as defined in each Forest's respective TMR in both the short and long-term through the reduction of miles of system roads, and does decrease the long-term negative effects of roads to soil, water, fisheries and wildlife associated with the 860 miles of road.

Cumulative Effects

The cumulative effects boundary will be the approximately 988,000 acre analysis area. The timeframe of the cumulative effects analysis for past projects will be 10 years. The table below displays the projects within the analysis area and the corresponding roads related decisions within the projects.

Table 5. Past, Present and Future and Foreseeable Roads Projects and 4FRI Proposed Roads Management

PROJECT	YEAR of DECISION	FOREST	ROAD MAINT	ROAD DECOM	MILES TEMP RD	NEW SYSTEM ROADS	ROAD RELOCATE	ESTABLISH BORROW PIT
Elk Park	2007	Coconino			4		0.8	
Hart Prairie	2010	Coconino						1
Jack Smith Schultz	2008	Coconino		66	5			
Mountaineer	2006	Coconino		0	1.3			
Munds Park	2009	Coconino		0	2			
Railroad	2008	Coconino		0	1			
Mormon Lake Basin	2005	Coconino		0	2			
Ft Valley Experimental Forest	2000	Coconino		19				
Kachina Village	2003	Coconino		7.7	5.8			
Woody	2004	Coconino		5				
Mint	1998	Coconino		32.1				
Arboretum	2000	Coconino		1				
Marshall	2011	Coconino		3.4	6			
Wing Mountain	2013	Coconino		8	4			
Dogtown	2004	Kaibab		18				
Community Tank	2009	Kaibab		2.2				
Spring Valley	2002	Kaibab		30.5				
Frenchy	2003	Kaibab		30.2				

PROJECT	YEAR of DECISION	FOREST	ROAD MAINT	ROAD DECOM	MILES TEMP RD	NEW SYSTEM ROADS	ROAD RELOCATE	ESTABLISH BORROW PIT
Flagstaff Watershed Protection Project	future	Coconino		5.4	21		2.1	
Road Pit NEPA	future	both		0				39
Bill Williams	future	Kaibab		28	16	23		
TOTAL				256.5	68.1	23	2.9	40
4FRI EIS		both	2,218 ⁵	860	520	0	9.4	0
CUMULATIVE EFFECTS			2,218	1,165.5	588.1	23.0	12.3	40

The table displays that there are about 257 miles of road decommissioning within previous projects and that 4FRI will add an additional 860 miles of decommissioned roads. The total of about 1,166 miles of decommissioned roads will move the cumulative effects analysis area closer to a safer and more affordable road system.

In addition, the table displays that there are 2.9 miles of road relocation in other projects and that there will be 9.4 miles of additional road relocation from the 4FRI project for a total of 12.3 miles of road relocation. This will have a limited effect on creating a safer and more affordable road system. Thus, there are a total of about 1,178 miles (1,166 miles decommissioned roads and about 12 miles of relocated roads) of action proposed between past, present, and future foreseeable roads projects and the 4FRI project that will create a safer and move towards the open road system that is defined in each Forest's respective TMR decisions, and remove negative impacts to other resources from 1,178 miles of road.

There will be a total of approximately 583 miles of temporary roads that will be opened and subsequently decommissioned. These actions are related to access to 4FRI and adjacent project areas, and as such, meet the need for access. No new roads or borrow sources are added under the 4FRI project, thus, 4FRI is not contributing to borrow sources that are used to maintain a safe and more affordable road system.

The 2,218 miles of road maintenance from project implementation will have a short term improvement for access to the project area, as well as meet the needs of annual road maintenance for the 2 Forests within the cumulative effects project area. The road maintenance also provides a short term improvement in safe and more affordable access during the effective life of the maintenance; hence 4FRI will add an additional approximately 1,718 miles of road maintenance over the current approximately 500 miles of level 3-5 roads that currently occur on the 2 Forests within the 4FRI area.

There are an additional 49 miles of roads directly identified within the project area that are managed by other jurisdictions (6 miles of State Highway and 43 miles of County Roads). An additional 635 miles of other jurisdiction roads are located directly adjacent or bisect the project area and a portion of these roads are likely to be used for haul, depending on where products are hauled to for manufacturing and/or shipping. Of the 635 miles there are 290 miles of Federal Highways, there are 159 miles of State

⁵ The 2,218 miles of road maintenance is road maintenance that will be completed as part of harvest implementation and is not the normal Forest program of work.

Highways, and multiple County Roads totaling 186 miles. In addition, Coconino County has maintenance agreements on multiple Forest Service roads within the project area. The following table lists the other jurisdiction roads that are associated with the 4FRI FEIS, as well as roads Forest Service roads where Coconino County has maintenance responsibilities.

Table 6. Other Road Jurisdictions Associated with the 4FRI EIS and Coconino County maintenance roads

Road	Jurisdiction	Coconino County Maintenance of FS road	Road	Jurisdiction	Coconino County Maintenance of FS road
Interstate 40	Federal	no	100	USFS	yes
Interstate 17	Federal	no	107	USFS	yes
US 180	Federal	no	74	USFS	yes
US 89	Federal	no	141	USFS	yes
AZ 64	State	no	00003E	USFS	yes
AZ 89A	State	no	128	USFS	yes
Coc 3	Coconino County	no	132	USFS	yes
Coc 73	Coconino County	no	136	USFS	yes
Coc-90	Coconino County	no	00136B	USFS	yes
75	USFS	yes	213	USFS	yes
781	USFS	yes	00237A	USFS	yes
62	USFS	yes	240	USFS	yes
124	USFS	yes	00518C	USFS	yes
9196	USFS	yes	556	USFS	yes
140	USFS	yes	557	USFS	yes
102	USFS	yes	649	USFS	yes
16	USFS	yes	667	USFS	yes
09002V	USFS	yes	6010	USFS	yes

There is not a unit of measure related to other jurisdictional roads, however, many of the roads that are currently under county road maintenance will be roads that will be used for haul of wood from the project area and there is an opportunity to coordinate maintenance responsibilities during product removal with Coconino County. There is also a need to provide for safety along the county maintained roads during hauling operation because these roads access private inholdings within each respective National Forest. Resource protection measures T3 and T5 are listed below to coordinate with Coconino County and to provide for safety signage during operations.

Summary of Alternatives by Units of Measure

The table below displays a summary of the Alternatives by the units of measure. The first portion of the table displays the miles of system road and miles of temporary road for each alternative that are needed to access the analysis area by alternative in order to implement the proposed action. The mileage number of open roads is for the entire analysis area of just under 1 million acres and displays road mileage that is outside the area where mechanical treatment are proposed in this analysis area, and thus exceeds the miles of open road that are identified above as haul routes. In Alternative A, there is not a need for temporary roads because no treatments are being proposed. In Alternatives B-E, the miles of existing road system is the same as Alternative A, but there are approximately 520 miles of temporary roads needed to be able to access material that is proposed for treatment.

The second portion of the table displays the summary of units of measure that are related to a more affordable road system that is identified in each Forests respective TMR decisions. Alternative A does not decommission any miles of road and the open road system remains the same as the current condition. Alternatives B-E do decommission about 860 miles of road, of these approximately 501 miles are system roads (a mixture of ML1 and ML 2 roads), thus reducing the miles of open system road to about 2,833 in the project area. Relocating roads does provide for easier maintenance and reduces the fiscal and environmental costs of roads that are located within drainage systems.

Table 7. Summary of 4FRI units of measure by alternative

ACCESS	Alternative A	Alternative B-E
System Road	4,278	4,278
Open	3,334	3,334
Closed	934	944
Temporary Road	0	520
MORE AFFORDABLE ROAD SYSTEM (Implementation of TMR Decision)	Alternative A	Alternative B-E
Total Miles of Decommissioned Road	0	860
Decommissioned System Road	0	501
Decommissioned Unauthorized Road	0	374
Miles of Open System Road	3,334	2,833
Miles of Road Reconstruction	0	9.4
SAFETY	Alternative A	Alternative B-E
Miles of Road Maintenance	500	1,157

The third portion of the table displays road maintenance as a surrogate for safety. A fully maintained road has the proper surfacing, proper signage and proper site distances that are a safer road system than unmaintained roads. This applies to Level 3 and greater roads only (roads suitable for passenger car travel) traveled by passenger car. For safety, Alternative A maintains primarily only level 3 and greater roads at about 500 miles per year. Alternatives B-E maintains all of the level 3 haul route roads

while product removal is occurring, providing for a safe road system through improved drainage, improved site distance and surfacing on 1,157 miles of roads.

Resource Protection Measures

Resource protection measures are outlined below for transportation management. There is a need to coordinate any roads related activities with other resources to minimize impacts on other resources from roads activities.

Table 8. Resource Protection Measures for 4FRI Proposed Roads Management

Mitigation #	Mitigation	Why
T1	Utilize accepted engineering practices and manual direction for maintenance and reconstruction practices.	To maintain a safe and economic road system.
T2	Coordinate any road use in associated with the El Paso and Transwestern High Pressure Natural gas pipelines. Haul can occur at designated crossings with sufficient pad material. No haul is proposed down these gas pipelines on Forest Roads 160, 796, 6796, 09007P, 09008P, 09228D, 09229Y, 09231Q.	To prevent damage to high-pressure gas pipelines.
T3	Coordinate road maintenance activities with Coconino County when there are contracts in place (timber sale, stewardship contracts) that have road maintenance obligations on the following roads that have current maintenance agreements with Coconino County: 75, 781, 62, 124, 9196, 140, 102, 16, 100, 107, 74, 141 on the Kaibab National Forest and 3E, 128, 132, 136, 136B, 213, 237A, 240, 518C, 556, 557, 649, 667, 6010, 09002V on the Coconino National Forest.	To minimize costs to Coconino County for road maintenance on roads that has contractual road maintenance obligations.
T4	On areas to be prescribed burned, if decommissioned roads are to be used as fire lines, return decommissioned roads back to the condition prior to burning. Rehabilitation of the surface should refer to the soil and water Best Management Practices for rehabilitation of fire lines and ground disturbed areas.	To discourage use on previously decommissioned road and to maintain a safe and economic road system.
T5	Utilize road safety signage with any project road activities that are related to project implementation.	To provide for user safety.
T6	Do not blade roads when the road surface is too dry. If the road surface is too dry, a water truck can apply water, or the project can be scheduled for when adequate moisture occurs to complete the project.	To protect the road investment by not detaching sediments.

Mitigation #	Mitigation	Why
T7	Utilize the closest material source that has the specified material type for all road maintenance/reconstruction /relocation to projects.	To minimize energy use for road maintenance/reconstruction/relocation activities.
T8	Road maintenance through the Timber Sale Contract or Stewardship Contract should require pre-haul and post haul maintenance on all roads to be used for haul.	To provide for a safe travel surface and to provide for access to the project area and to ensure drainage is adequate to minimize sediment effects from roads .
T9	Utilize mitigation measures for soil and water, recreation, cultural resources, timber/silviculture, wildlife and botany/noxious weeds in project design.	To minimize resource impacts from the transportation system.
	Additional Mitigation from Response to Comments	Why
T10	As a condition of approval for use of a temporary road within a Timber Sale Contract or Stewardship Contract, temporary roads will be decommissioned by the purchaser/contractor when mechanical treatments are finished using the adaptive management actions listed in Appendix A of the Transportation Specialist Report and BMP's for rehabilitation of ground disturbed sites in the soils design feature section.	To restore to desired conditions and ensure that they do not become de facto new roads.
T11	Do not allow or approve new temporary road construction in filter strips. If feasible, avoid new temporary road locations in severe erosion hazard soils. If necessary to have a temporary road on severe erosion hazard soils, utilize BMP's outlined in the Soil and Water section to avoid affects from severe erosion hazard soils.	To minimize adverse environmental effects on within stream filter strips and on severe erosion hazard soils.
T12	Temporary roads locations should be located in existing openings out of filter strips and avoid removal of trees where feasible. If trees need to be removed, avoid old and large trees and oaks and aspen trees where feasible.	To minimize adverse effects to tree structure, filter strips and minimize road disturbance from temporary roads and

Mitigation #	Mitigation	Why
		need for fills in stump holes.

Data

The roads data used for this analysis is from Forest GIS data layers for the Coconino and Kaibab National Forests, as well as tabular data from the INFRA database. Four sample areas were utilized to ground truth roads data by Bob Rich, Regional Logging Engineer and Kit MacDonald, soil scientist on the Kaibab National Forest in the fall of 2011 (USDA, 2012). The four sampled areas had a total acreage of 58,201 acres, or about 15% of the mechanical harvest acres proposed. The sampled area did not sample other ownership, PACs and areas that were covered under other NEPA. The sample displayed that a portion of the system roads that are in the database were actually closed and/or decommissioned roads and display that the roads data are representative for this analysis.

Experience

My experience includes a Bachelor’s degree in Forest Management, and Master’s degree in Public Administration and 33 years of experience in the US Forest Service. From 2010 to the present, I have been the Assistant team Leader for the Four Forest Restoration Initiative, as well as the acting Team Leader for 4FRI since February 9, 2014. From 1994-2010, I was the soil and water resource specialist on the Mogollon Rim Ranger District (and Blue Ridge and Long Valley Ranger Districts’ prior to the districts being combined) and was the Interdisciplinary Team Leader for the ECC RAP, the Anderson Mesa RAP and the SE Rap. I was also the soil and water specialist for the Flagstaff Ranger District (formerly Peaks and Mormon Lake Ranger Districts) of the Coconino National Forest from 2007 to 2010. Prior to that, I was a Timber Sale Administrator/presale forester from 1985-1994 and a Forester on the Coconino National Forest land management planning team responsible for timber simulations for Forest Plans (Coconino, Kaibab, Prescott, and Apache-Sitgreaves) from 1980 to 1985.

Prepared by: /s/ *Dick Fleishman* Date 10/7/2014

/s/ *Dick Fleishman*

Dick Fleishman

Acting Team Leader and Assistant Team Leader—Four Forest Restoration Initiative

Coconino National Forest

Reviewed by Marjorie Apodaca on 6/23/14 and 9/30/14 and edits made by Dick Fleishman 6/24/14, 9/30/14 and 10/7/14.

APPENDIX A. Road Decommission, Unauthorized Route and Temporary Roads Adaptive Management Plan

Evaluation Criteria	Desired Condition (forest plan, policy, etc.)	Existing Condition (what, where, how much?)	Possible Management Actions	Monitoring Measure	Trigger Indicating Additional Action is Needed (What – When)	Adaptive Options	Effects	Design Features/ Mitigations
Roads and unauthorized routes located in upland (non-meadow) and in meadows	Soils are in satisfactory condition so that the soil can resist erosion, recycle nutrients, and absorb water. Understory species (e.g., grasses, forbs, and shrubs) diversity is consistent with site potential and provides for infiltration of water and reduction of accelerated erosion. The understory has a variety of heights of cool and warm season vegetation.	827miles of road/route. All roads are in unsatisfactory soil condition due to accelerated erosion, lack of effective ground cover, and compaction.	1. Reestablishing former drainage patterns, stabilizing slopes, and restoring vegetation; 2. Blocking the entrance to a road or installing water bars; 3. Removing culverts, reestablishing drainages, removing unstable fills, pulling back road shoulders, and scattering slash on the roadbed;4. Completely eliminating the roadbed by restoring natural contours and slopes; and 5. Other methods designed to meet the specific conditions associated with the unneeded road.	Miles of road treated; Soil condition assessment.	Soil condition is impaired or unsatisfactory as defined in soil condition assessment. Time is 5 years after treatment.	Additional drainage, additional revegetation efforts (including mulching), possibly short-term fencing to protect revegetation, possibly complete removal of roadbed.	Short-term ground disturbance and possible sediment detachment and movement off-site, short-term noise disturbance to wildlife species. Long-term establishment of vegetation, improved soil productivity, soil erosion minimized to natural levels (soil in satisfactory condition), decreased animal disturbance from vehicles. Short and long-term reduction of vehicular access	To be added as BMP's

Evaluation Criteria	Desired Condition (forest plan, policy, etc.)	Existing Condition (what, where, how much?)	Possible Management Actions	Monitoring Measure	Trigger Indicating Additional Action is Needed (What – When)	Adaptive Options	Effects	Design Features/ Mitigations
Roads and unauthorized routes located in filter strips of identified riparian and non-riparian streamcourses.	Soils are in satisfactory condition so that the soil can resist erosion, recycle nutrients, and absorb water. Understory species (e.g., grasses, forbs, and shrubs) diversity is consistent with site potential and provides for infiltration of water and reduction of accelerated erosion. The understory has a variety of heights of cool and warm season vegetation.	33 miles of road/route. All roads are in unsatisfactory soil condition due to accelerated erosion, lack of effective ground cover, and compaction.	1. Reestablishing former drainage patterns, stabilizing slopes, and restoring vegetation; 2. Blocking the entrance to a road or installing water bars; 3. Removing culverts, reestablishing drainages, removing unstable fills, pulling back road shoulders, and scattering slash on the roadbed; 4. Completely eliminating the roadbed by restoring natural contours and slopes; and 5. Other methods designed to meet the specific conditions associated with the unneeded road.	Miles of road treated; Soil condition assessment.	Soil condition is impaired or unsatisfactory as defined in soil condition assessment. Time is 5 years after treatment.	Additional drainage, additional revegetation efforts (including mulching), possibly short-term fencing to protect revegetation.	Short-term ground disturbance and possible sediment detachment and movement off-site into streamcourses, short-term noise disturbance to wildlife species. Long-term establishment of vegetation, improved soil productivity, soil erosion minimized to natural levels (soil in satisfactory condition), decreased animal disturbance from vehicles. Short and long-term reduction of vehicular access	To be added as BMP's.

Evaluation Criteria	Desired Condition (forest plan, policy, etc.)	Existing Condition (what, where, how much?)	Possible Management Actions	Monitoring Measure	Trigger Indicating Additional Action is Needed (What – When)	Adaptive Options	Effects	Design Features/ Mitigations
Temporary Roads	Soils are in satisfactory condition so that the soil can resist erosion, recycle nutrients, and absorb water. Understory species (e.g., grasses, forbs, and shrubs) diversity is consistent with site potential and provides for infiltration of water and reduction of accelerated erosion. The understory has a variety of heights of cool and warm season vegetation.	Potential for up to 520 miles of temporary road, of these there are approximately 253 miles of temporary roads and 268 miles of existing system roads that have been previously closed/decommissioned as temporary roads that could be re-opened.	1. Ripping the entire road bed to remove compaction, reestablishing former drainage patterns, stabilizing slopes, and restoring vegetation 2. Completely eliminating the roadbed by restoring natural contours and slopes and establishing vegetation on the site; 3) Other methods designed to meet the specific conditions associated with the temporary road.	Miles of road treated; Soil condition assessment.; Contract inspection reports	Soil condition is impaired or unsatisfactory as defined in soil condition assessment. Time is 5 years after treatment	Additional drainage, additional revegetation efforts (including mulching), possibly short-term fencing to protect revegetation.	Short-term ground disturbance and possible sediment detachment and movement off-site, short-term noise disturbance to wildlife species. Long-term establishment of vegetation, improved soil productivity, soil erosion minimized to natural levels (soil in satisfactory condition), decreased animal disturbance from vehicles. Short and long-term reduction of vehicular access	To be added as BMP's.

APPENDIX B- Roads to be Decommissioned

The table displays the road numbers of roads that are analyzed for decommissioning within the analysis. These are roads that the TMR decision identified as not needed for the open road system—there are no additional roads ID’ed for decommissioning than the TMR non-open roads. There are roads within the table that are only a portion of the road will be decommissioned. The spatial data for this is stored within the Forest Service GIS network in a geodatabase with at the following address:

T:\FS\NFS\R03\Collaboration\4FRI\GIS\Data\FS_Files\4-FRI\FEIS\FEIS_Data.gdb

The feature class within the geodatabases is titled “Roads. Sub feature class is titled “RoadDecom_FEIS” and the attribute is titled “decom”.

Road Number	Road Number	Road Number	Road Number	Road Number	Road Number
627	09141R	09253N	U677	X-04140	X-12415
649	09141S	09253Q	U678	X-04147	X-12421
655	09141T	09257D	U68	X-04153	X-12437
700	09141V	09257P	U680	X-04209	X-12449
703	09141W	09257U	U681	X-04213	X-12465
860	09141Y	09257Y	U682	X-04216	X-12509
862	09142C	09258B	U684	X-04231	X-12512
865	09142D	09258D	U685	X-04298	X-12516
2121	09142E	09410S	U686	X-04307	X-12517
3155	09142F	09410Y	U688	X-04318	X-12518
3237	09142H	09411K	U69	X-04333	X-12521
3244	09142J	09411L	U690	X-04352	X-12532
6006	09142K	09411P	U691	X-04357	X-12535
6007	09142L	09411S	U692	X-04373	X-12536
6009	09142M	09411U	U693	X-04375	X-12558
6014	09142N	09411V	U694	X-04389	X-12588
6015	09142P	09412B	U695	X-04397	X-12598
6016	09142Q	09412H	U697	X-04398	X-12600
6018	09142R	09413X	U698	X-04405	X-12621
6019	09142S	09414N	U70	X-04432	X-12653
6028	09142T	09415J	U704	X-04450	X-12654
6065	09142U	09415K	U707	X-04455	X-12677
6113	09143A	09415W	U71	X-04458	X-12700
6215	09143D	09419G	U72	X-04579	X-12786
6224	09143F	09419M	U73	X-04586	X-12834
6227	09143H	09419N	U74	X-04587	X-12839
6354	09143J	09419P	U75	X-04590	X-12846
6391	09143K	09419Q	U754	X-04597	X-12849
6434	09143M	09419W	U76	X-04621	X-12878
6435	09144T	09419Y	U760	X-04624	X-12883
6436	09144X	09420A	U77	X-04625	X-12898
6437	09145A	09420D	U78	X-04644	X-12933
6439	09145B	09420J	U90	X-04659	X-12937
6441	09145H	09420L	U91	X-04712	X-12949
6442	09145Q	09420M	U92	X-04730	X-12959
9018	09145S	09420X	U93	X-04735	X-12964
9021	09145T	09420Y	X-00637	X-04736	X-12965
9110	09145U	09421C	X-00639	X-04750	X-12972

Road Number	Road Number	Road Number	Road Number	Road Number	Road Number
9112	09145W	09421D	X-00706	X-04761	X-12975
9137	09145Y	09421E	X-00845	X-04762	X-12992
9143	09146B	09421K	X-00913	X-04775	X-13045
9146	09146C	09421W	X-00919	X-04776	X-13049
9147	09146Y	09421X	X-00929	X-04781	X-13053
9149	09147A	09421Y	X-00956	X-04809	X-13079
9157	09147B	09423C	X-00957	X-04821	X-13090
9159	09147C	09423E	X-00975	X-04841	X-13101
9160	09147D	09423F	X-00977	X-04884	X-13104
9216	09147E	09423U	X-01008	X-04895	X-13105
9217	09147F	09453A	X-01054	X-04900	X-13112
9219	09147G	09453G	X-01061	X-04910	X-13117
9232	09147H	09455A	X-01075	X-04912	X-13145
9234	09147J	09455C	X-01089	X-04922	X-13149
9237	09147K	09456F	X-01111	X-04952	X-13157
9239	09147L	09456N	X-01150	X-04954	X-13175
9247	09147N	09457A	X-01161	X-04974	X-13179
9411	09147P	09457D	X-01206	X-04981	X-13183
9415	09148G	09457E	X-01248	X-04985	X-13185
9420	09148Q	09457F	X-01253	X-04994	X-13192
9458	09148R	09457G	X-01262	X-04998	X-13196
9470	09148V	09457V	X-01266	X-05008	X-13197
9474	09148W	09457Y	X-01276	X-05009	X-13203
9477	09148X	09458D	X-01287	X-05024	X-13220
9482	09148Y	09458H	X-01306	X-05026	X-13222
9491	09149A	09458K	X-01309	X-05041	X-13229
9499	09149B	09458U	X-01311	X-05054	X-13237
00003J	09149C	09458V	X-01316	X-05078	X-13244
00003K	09149R	09458W	X-01356	X-05085	X-13245
00003L	09151F	09458X	X-01388	X-05086	X-13279
00003P	09151G	09458Y	X-01399	X-05095	X-13282
00003R	09151P	09459H	X-01437	X-05096	X-13290
00068B	09151R	09459J	X-01480	X-05099	X-13308
00075A	09151S	09459M	X-01553	X-05100	X-13317
00078B	09151T	09459S	X-01570	X-05108	X-13321
00080B	09151V	09459T	X-01572	X-05109	X-13349
00124B	09151W	09459U	X-01600	X-05111	X-13351
00132B	09152Q	09460B	X-01608	X-05118	X-13367
00132H	09152R	09460C	X-01616	X-05132	X-13368
00132J	09153F	09460D	X-01626	X-05155	X-13372
00133A	09153G	09460F	X-01634	X-05165	X-13379
00151B	09153H	09460G	X-01637	X-05176	X-13394
00231G	09153J	09460H	X-01654	X-05184	X-13396
00237E	09153K	09460K	X-01677	X-05193	X-13397
00244C	09153L	09460V	X-01678	X-05201	X-13399
00253C	09153M	09461E	X-01686	X-05214	X-13402
00253G	09153N	09461F	X-01688	X-05219	X-13410
00296B	09153P	09461G	X-01692	X-05220	X-13412
00390B	09153Q	09461Q	X-01699	X-05222	X-13414
00418X	09153R	09461R	X-01705	X-05224	X-13416
00420A	09153S	09461S	X-01716	X-05225	X-13417
00420B	09153T	09461T	X-01719	X-05229	X-13418
00420C	09156V	09461U	X-01723	X-05230	X-13421

Road Number	Road Number	Road Number	Road Number	Road Number	Road Number
00420L	09156W	09462B	X-01727	X-05231	X-13422
00420M	09158M	09462D	X-01779	X-05234	X-13423
00514A	09158N	09462F	X-01784	X-05240	X-13441
00526C	09158P	09462G	X-01785	X-05246	X-13443
00527F	09158Q	09462H	X-01797	X-05257	X-13444
00530E	09158R	09462K	X-01810	X-05258	X-13451
00536B	09158S	09462M	X-01817	X-05261	X-13457
00536D	09158T	09462P	X-01829	X-05265	X-13463
00538F	09158U	09462Q	X-01842	X-05271	X-13464
00545B	09158V	09462R	X-01856	X-05273	X-13465
00545E	09158X	09462S	X-01863	X-05280	X-13481
00553A	09159A	09462U	X-01865	X-05284	X-13482
00553B	09159F	09462V	X-01869	X-05287	X-13488
00631B	09159G	09462X	X-01872	X-05293	X-13492
00631C	09159H	09463N	X-01876	X-05296	X-13493
00631D	09159J	09463V	X-01878	X-05298	X-13499
00631E	09159K	09463X	X-01889	X-05299	X-13505
00700A	09159L	09465A	X-01892	X-05314	X-13507
00700B	09159N	09465D	X-01893	X-05320	X-13514
00700C	09159P	09465L	X-01906	X-05321	X-13515
00700G	09159Q	09465Q	X-01918	X-05324	X-13516
00700J	09159R	09465V	X-01925	X-05343	X-13523
00700K	09159S	09466M	X-01931	X-05348	X-13526
00700L	09159T	09466W	X-01935	X-05354	X-13535
00700M	09159U	09467L	X-01941	X-05357	X-13538
00707A	09159V	09467M	X-01974	X-05362	X-13551
00707B	09159W	09467U	X-01978	X-05363	X-13552
00707C	09159X	09467Y	X-01980	X-05364	X-13566
00707D	09159Y	09468R	X-01985	X-05366	X-13568
00714A	09160B	09468Y	X-01991	X-05370	X-13570
00714E	09166J	09469Q	X-01998	X-05371	X-13583
00773B	09166L	09469W	X-02000	X-05377	X-13589
00861A	09171F	09470R	X-02004	X-05380	X-13598
06028B	09171G	09471E	X-02007	X-05382	X-13599
06077C	09171H	09471N	X-02011	X-05385	X-13603
06077D	09171L	09471Q	X-02013	X-05388	X-13606
09001F	09173E	09472L	X-02023	X-05390	X-13610
09001G	09180J	09472N	X-02039	X-05391	X-13618
09001M	09180L	09473B	X-02042	X-05399	X-13648
09001S	09180M	09473N	X-02043	X-05400	X-13654
09001T	09180N	09473P	X-02063	X-05402	X-13655
09001U	09180P	09473T	X-02072	X-05403	X-13656
09001W	09180Q	09473U	X-02078	X-05404	X-13661
09002D	09180R	09474D	X-02081	X-05405	X-13671
09002G	09180T	09474G	X-02084	X-05406	X-13685
09002K	09180W	09474S	X-02090	X-05408	X-13691
09002M	09181E	09475U	X-02108	X-05414	X-13694
09002N	09215E	09475W	X-02115	X-05415	X-13697
09002R	09216A	09475Y	X-02116	X-05416	X-13699
09002S	09216B	09477A	X-02120	X-05417	X-13704
09002X	09216C	09477B	X-02125	X-05419	X-13712
09003E	09216D	09478C	X-02126	X-05421	X-13758
09003F	09216E	09478D	X-02128	X-05434	X-13763

Road Number	Road Number	Road Number	Road Number	Road Number	Road Number
09003M	09216F	09478E	X-02129	X-05439	X-13774
09003N	09216G	09478S	X-02137	X-05446	X-13777
09003P	09216H	09478T	X-02139	X-05466	X-13806
09003S	09216K	09479M	X-02142	X-05491	X-13823
09004D	09216L	09480A	X-02143	X-05500	X-13827
09004F	09216Q	09480B	X-02144	X-05501	X-13853
09004G	09216Y	09481K	X-02145	X-05508	X-13855
09004H	09217A	09482K	X-02147	X-05509	X-13872
09004N	09217B	09482U	X-02148	X-05524	X-13922
09004P	09217D	09482W	X-02149	X-05528	X-13931
09004R	09217E	09484P	X-02153	X-05529	X-13943
09004S	09217F	09484W	X-02154	X-05549	X-13984
09005D	09217G	09485K	X-02155	X-05552	X-14047
09005E	09217H	09485W	X-02157	X-05561	X-14068
09005M	09217J	09486R	X-02160	X-05581	X-14070
09005N	09217L	09486W	X-02163	X-05589	X-14107
09005R	09217M	09486X	X-02164	X-05600	X-14131
09005Y	09217P	09487M	X-02173	X-05604	X-14206
09006E	09217Q	09487R	X-02179	X-05605	X-14224
09006F	09217S	09488J	X-02185	X-05609	X-14226
09006G	09217T	09488M	X-02186	X-05620	X-14284
09006L	09217Y	09489C	X-02211	X-05622	X-14289
09006P	09218C	09489D	X-02216	X-05623	X-14312
09006S	09218D	09491A	X-02238	X-05624	X-14323
09007D	09218E	09491B	X-02249	X-05633	X-14371
09007E	09218F	09491L	X-02269	X-05638	X-14378
09007F	09218G	09492D	X-02292	X-05639	X-14385
09007G	09218J	09493M	X-02319	X-05644	X-14389
09007J	09218K	09493N	X-02330	X-05647	X-14399
09007L	09218P	09494G	X-02364	X-05648	X-14403
09007M	09218Q	09495B	X-02382	X-05650	X-14407
09007S	09218R	09495C	X-02390	X-05651	X-14409
09007T	09218S	09495G	X-02391	X-05663	X-14415
09007U	09218T	09496B	X-02401	X-05672	X-14438
09007X	09218U	09496G	X-02412	X-05689	X-14450
09008E	09218V	09497A	X-02427	X-05690	X-14453
09008J	09218X	09498B	X-02448	X-05699	X-14473
09008K	09218Y	09498C	X-02452	X-05703	X-14475
09008M	09219A	09499B	X-02465	X-05710	X-14506
09008U	09219B	09499F	X-02469	X-05714	X-14509
09009G	09219C	09499G	X-02491	X-05718	X-14520
09009K	09219D	12T	X-02504	X-05727	X-14522
09009L	09219E	141GG	X-02506	X-05736	X-14530
09009M	09219F	166A	X-02509	X-05756	X-14544
09009R	09219J	305AA	X-02510	X-05757	X-14551
09009T	09219K	3244A	X-02515	X-05873	X-14555
09011L	09219L	700A	X-02519	X-05889	X-14566
09012F	09219P	701GA	X-02521	X-05911	X-14610
09012G	09219R	785BA	X-02528	X-05969	X-14881
09012H	09219S	9439E	X-02532	X-05970	X-14912
09013G	09219T	U336	X-02537	X-05983	X-14940
09014G	09219U	U337	X-02557	X-05984	X-14963
09014J	09219X	U338	X-02561	X-06009	X-14964

Road Number	Road Number	Road Number	Road Number	Road Number	Road Number
09014R	09219Y	U339	X-02562	X-06029	X-14966
09015J	09220K	U342	X-02574	X-06055	X-14973
09015Y	09220N	U345	X-02602	X-06089	X-14996
09016D	09220P	U346	X-02615	X-06090	X-15013
09016P	09220Q	U347	X-02646	X-06114	X-15015
09017F	09220R	U348	X-02650	X-06178	X-15018
09017G	09220T	U349	X-02661	X-06225	X-15026
09017K	09220U	U35	X-02670	X-06234	X-15036
09017P	09220V	U351	X-02685	X-06258	X-15048
09017X	09220W	U356	X-02692	X-06279	X-15088
09018B	09220X	U357	X-02717	X-06295	X-15140
09018C	09221P	U358	X-02725	X-06298	X-15189
09018D	09222B	U368	X-02734	X-06317	X-15233
09018K	09222D	U371	X-02745	X-06321	X-15289
09018N	09222F	U374	X-02751	X-06331	X-15378
09019C	09222Q	U377	X-02754	X-06342	X-15393
09019E	09222R	U381	X-02762	X-06351	X-15410
09021A	09222S	U384	X-02775	X-06354	X-15411
09021B	09222T	U385	X-02796	X-06356	X-15419
09021F	09222U	U386	X-02822	X-06357	X-15424
09021J	09222V	U387	X-02823	X-06359	X-15431
09021K	09222X	U388	X-02836	X-06367	X-15446
09021L	09224A	U389	X-02838	X-06378	X-15453
09021M	09224F	U392	X-02845	X-06394	X-15454
09021N	09224G	U394	X-02846	X-06399	X-15465
09021P	09226W	U397	X-02847	X-06409	X-15472
09021Q	09226X	U398	X-02850	X-06410	X-15527
09021R	09227B	U408	X-02866	X-06433	X-15553
09021S	09227C	U411	X-02878	X-06487	X-15562
09021T	09227D	U412	X-02887	X-06532	X-15576
09021U	09227E	U418	X-02893	X-06533	X-15598
09022W	09227F	U425	X-02914	X-06555	X-15601
09023A	09227G	U428	X-02922	X-06592	X-15606
09023B	09227H	U430	X-02948	X-06635	X-15613
09023C	09227J	U440	X-02961	X-06693	X-15616
09024A	09227U	U442	X-02965	X-06706	X-15633
09024D	09228E	U446	X-02971	X-06729	X-15638
09025V	09228F	U448	X-02972	X-06750	X-15644
09111A	09228H	U449	X-02975	X-06769	X-15645
09111L	09228J	U450	X-02981	X-06779	X-15650
09111P	09228L	U451	X-02991	X-06795	X-15652
09111R	09228X	U453	X-02992	X-06810	X-15669
09111S	09229C	U455	X-02994	X-06811	X-15676
09111T	09229D	U456	X-03005	X-06829	X-15681
09111V	09229F	U457	X-03013	X-06878	X-15697
09111W	09229G	U459	X-03037	X-06881	X-15734
09111X	09229H	U460	X-03050	X-06882	X-15755
09111Y	09229J	U461	X-03066	X-06904	X-15758
09112B	09229K	U464	X-03067	X-06912	X-15770
09112C	09229M	U465	X-03071	X-06913	X-15771
09112J	09229N	U466	X-03083	X-06955	X-15824
09112K	09229P	U467	X-03099	X-07007	X-15837
09113E	09229Q	U469	X-03105	X-07031	X-15844

Road Number	Road Number	Road Number	Road Number	Road Number	Road Number
09113J	09229R	U471	X-03106	X-07039	X-15863
09113Y	09229S	U472	X-03107	X-07195	X-15904
09114G	09229T	U473	X-03128	X-07514	X-15971
09114H	09229X	U475	X-03147	X-07523	X-16078
09114L	09231L	U477	X-03171	X-07534	X-16118
09114M	09231M	U478	X-03173	X-07621	X-16197
09114R	09231N	U479	X-03181	X-07730	X-16215
09114S	09231P	U480	X-03185	X-07809	X-16254
09114V	09231R	U481	X-03186	X-07848	X-16326
09114W	09231S	U485	X-03193	X-07883	X-16327
09114X	09231X	U486	X-03200	X-07888	X-16338
09114Y	09231Y	U488	X-03209	X-08004	X-16341
09117M	09232B	U490	X-03226	X-08119	X-16362
09121B	09232C	U491	X-03227	X-08153	X-16385
09121C	09232D	U492	X-03235	X-08253	X-16406
09121D	09232E	U494	X-03241	X-08518	X-16426
09121E	09232F	U500	X-03246	X-08679	X-16430
09122B	09232G	U501	X-03247	X-08687	X-16459
09122C	09232H	U502	X-03251	X-08760	X-16495
09122D	09232J	U504	X-03259	X-09080	X-16536
09122E	09232K	U505	X-03265	X-09128	X-16572
09122F	09232L	U506	X-03266	X-09208	X-16623
09122G	09232M	U507	X-03272	X-09220	X-16624
09122K	09233F	U508	X-03277	X-09379	X-16642
09122R	09233G	U510	X-03278	X-09444	X-16643
09123B	09233H	U511	X-03283	X-09613	X-16657
09123C	09233J	U514	X-03295	X-09724	X-16695
09123D	09233K	U516	X-03298	X-10196	X-16765
09123G	09233L	U517	X-03299	X-10549	X-16766
09123L	09233M	U518	X-03301	X-10727	X-16800
09123M	09233N	U522	X-03306	X-10892	X-16811
09123R	09233P	U523	X-03316	X-10914	X-16815
09124D	09233Q	U524	X-03319	X-11028	X-16846
09124E	09233R	U526	X-03324	X-11100	X-16955
09124G	09233S	U527	X-03331	X-11150	X-16978
09124H	09233T	U528	X-03337	X-11221	X-17039
09124J	09233U	U533	X-03338	X-11348	X-17122
09124K	09233V	U534	X-03339	X-11524	X-17145
09124L	09233X	U535	X-03342	X-11643	X-17187
09125C	09233Y	U539	X-03371	X-11674	X-17202
09125E	09234A	U540	X-03378	X-11677	X-17274
09125G	09234B	U546	X-03397	X-11790	X-17288
09126E	09234C	U547	X-03402	X-11804	X-17299
09126G	09234D	U548	X-03412	X-11809	X-17408
09126H	09234E	U550	X-03422	X-11827	X-17415
09126J	09234F	U551	X-03429	X-11837	X-17492
09126K	09234G	U554	X-03430	X-11862	X-17505
09126N	09234H	U557	X-03443	X-11871	X-17513
09127C	09234J	U561	X-03444	X-11875	X-17522
09127D	09234K	U563	X-03446	X-11876	X-17526
09127F	09234L	U564	X-03467	X-11882	X-17536
09128C	09234N	U565	X-03475	X-11936	X-17557
09128E	09234P	U568	X-03491	X-11957	X-17582

Road Number	Road Number	Road Number	Road Number	Road Number	Road Number
09128N	09234Q	U572	X-03505	X-11992	X-17584
09129C	09234T	U574	X-03506	X-12015	X-17656
09129E	09234U	U575	X-03507	X-12047	X-17658
09131T	09234V	U582	X-03538	X-12063	X-17668
09131Y	09234W	U586	X-03564	X-12076	X-17718
09132A	09234X	U588	X-03588	X-12087	X-17722
09132D	09234Y	U589	X-03624	X-12097	X-17785
09132E	09236B	U594	X-03638	X-12100	X-17818
09132M	09237A	U598	X-03642	X-12126	X-17915
09132R	09237B	U600	X-03671	X-12188	X-17917
09132V	09237D	U603	X-03702	X-12194	X-17926
09133C	09237E	U617	X-03708	X-12205	X-17961
09133D	09237M	U624	X-03749	X-12206	X-18033
09133E	09237N	U63	X-03761	X-12215	X-18117
09134B	09237P	U635	X-03798	X-12258	X-18137
09134C	09237Q	U64	X-03810	X-12305	X-18237
09137A	09237S	U642	X-03925	X-12311	X-18252
09137B	09237T	U643	X-03954	X-12317	X-18260
09137D	09237U	U644	X-03992	X-12325	X-18290
09140F	09237V	U645	X-03994	X-12360	X-18293
09140J	09237W	U646	X-04003	X-12390	X-18318
09140N	09237X	U650	X-04008	X-12394	X-18348
09140Q	09237Y	U651	X-04011	X-12403	
09140S	09238A	U66	X-04102	X-12410	
09141Q	09238R	U67	X-04107		

**APPENDIX C- Roads
that will be used in
the Project Area**

Kaibab Roads

ROAD NUMBER	MILES
4	1.7
11	4.1
12	5.0
13	3.6
14	3.0
15	0.0
16	2.9
18	1.9
24	5.0
25	3.4
38	1.2
40	0.0
41	6.5
42	3.4
44	0.7
45	5.3
47	2.0
48	3.7
49	1.8
51	2.0
54	0.4
56	3.9
57	3.2
58	1.8
59	2.0
62	7.3
63	1.3
64	1.1
65	4.1
67	3.5
71	5.5
72	2.9
74	7.5
75	3.8
76	9.1
81	2.8
86	1.5
88	1.0
90	7.1
91	3.6
97	2.4
100	6.6
101	4.6
102	5.4
103	0.2
104	1.3
105	8.3
106	1.8

ROAD NUMBER	MILES
107	6.4
108	17.3
109	7.3
110	14.7
111	7.0
115	1.9
119	2.7
121	0.4
122	8.4
124	3.1
125	1.7
126	3.5
127	3.1
128	3.9
129	3.8
130	2.3
131	1.3
132	1.3
133	0.4
134	3.4
135	3.2
136	2.3
137	0.6
138	7.0
139	7.3
140	6.6
141	38.7
144	5.3
145	1.4
147	5.1
149	0.9
150	1.7
151	1.3
152	2.6
154	0.8
156	4.0
159	4.0
160	17.8
161	3.6
163	1.6
165	11.2
166	2.5
167	6.0
171	8.4
186	2.8
190	3.4
194	4.1
195	1.4
301	6.1
302	14.4
303	7.1
304	1.3
306	1.3
307	5.2

ROAD NUMBER	MILES
310	7.2
311	0.4
317	3.3
321	2.5
322	2.3
328	0.9
339	5.0
343	1.3
354	9.3
527	1.0
605	0.2
606	0.0
684	0.0
688	2.1
700	0.4
701	1.7
703	1.3
704	1.5
705	1.4
708	0.0
712	4.0
713	1.8
714	1.4
716	2.1
717	3.2
720	2.9
728	3.3
730	8.6
735	0.3
736	4.6
744	0.5
746	4.9
747	4.4
749	2.7
765	0.6
779	1.6
781	4.4
782	1.3
786	3.0
787	2.1
791	0.3
792	0.7
793	5.5
796	16.4
798	3.8
799	2.2
804	0.3
805	2.0
812	1.4
900	1.4
902	0.0
1417	0.4
1742	2.2
2007	0.8

ROAD NUMBER	MILES
2009	0.5
2010	1.0
2012	0.2
2014	0.5
2033	0.9
2034	1.1
2037	0.5
2042	1.0
2051	1.3
2054	1.5
2056	0.8
2058	2.8
2059	0.0
2060	1.6
2066	1.1
2067	1.2
2069	0.2
2071	0.8
2072	1.7
2078	1.0
2079	1.0
2080	1.0
2081	0.6
2082	1.1
2084	4.1
2086	2.7
2087	1.3
2091	1.1
2095	1.9
2096	1.8
2099	0.2
2100	0.6
2102	0.9
2103	1.5
2107	0.1
2108	0.4
2109	0.7
2110	0.4
2111	1.2
2117	3.1
2120	0.5
2121	2.4
2122	0.3
2129	0.3
2130	1.5
2131	0.8
2132	2.2
2139	0.6
2141	0.4
2142	1.8
2143	0.4
2151	1.6
2161	3.7
2163	1.3

ROAD NUMBER	MILES
2164	1.4
2165	0.4
2166	0.2
2167	0.7
2168	0.7
2170	0.8
2178	1.5
2179	1.6
2183	0.9
2184	0.6
2185	1.9
2188	0.7
2191	0.8
2193	0.4
2194	0.1
2198	1.8
2202	0.3
2204	0.4
2205	2.7
2206	0.2
2208	0.1
2209	0.9
2210	0.5
2213	0.3
2214	0.3
2215	0.5
2217	0.6
2218	0.3
2220	3.0
2222	0.4
2223	0.3
2224	0.4
2229	0.7
2234	1.7
2235	0.5
2238	1.2
2239	0.5
2240	0.3
2241	1.6
2242	1.2
2243	0.5
2245	1.5
2247	0.9
2248	0.5
2249	0.7
2250	0.1
2253	1.0
2254	0.2
2256	1.0
2261	1.2
2286	0.4
2400	1.1
2401	1.8
2402	0.6

ROAD NUMBER	MILES
2403	0.3
2404	0.2
2406	1.2
2407	1.9
2412	0.5
2413	1.0
2414	0.8
2415	0.3
2416	0.2
2417	0.4
2418	0.3
2419	0.4
2420	0.4
2421	0.2
2422	0.4
2423	1.1
2424	0.6
2427	1.3
2433	0.6
2437	0.8
2445	0.6
2446	0.5
2447	0.8
2449	0.8
2450	0.6
2451	0.3
2452	0.3
2453	1.0
2454	0.3
2455	0.4
2456	0.3
2460	0.5
2461	0.7
2463	1.2
2465	0.6
2467	0.3
2470	0.3
2471	0.6
2472	0.2
2473	2.3
2475	0.5
2476	0.5
2477	0.2
2478	2.4
2480	1.5
2487	1.6
2546	0.2
2553	0.4
2616	0.4
2619	3.6
2703	0.0
2708	0.8
2709	3.3
2710	2.6

ROAD NUMBER	MILES
2713	3.7
2714	1.3
2715	0.3
2717	2.7
2718	1.4
2719	5.9
2722	3.7
2725	0.1
2732	0.9
2733	0.0
2734	1.6
2756	3.5
2757	1.3
2759	1.3
2761	1.6
2769	0.5
2801	1.0
2803	2.5
2804	0.1
3012	0.4
3014	0.7
3018	2.1
3099	0.8
3102	2.8
3104	0.5
3105	1.2
3106	1.7
3107	2.4
3108	1.5
3109	1.4
3110	1.3
3111	0.4
3112	0.4
3115	0.5
3116	0.4
3117	2.0
3123	0.7
3153	0.3
3154	1.0
3155	0.7
3156	0.9
3160	0.2
3162	0.6
3164	0.7
3165	0.3
3166	1.0
3200	0.4
3202	1.3
3204	2.3
3205	0.4
3209	5.2
3215	1.3
3221	0.9
3225	1.3

ROAD NUMBER	MILES
3230	2.3
3232	1.1
3234	0.4
3235	1.5
3236	1.6
3237	0.5
3244	1.6
3251	0.5
3253	1.2
3254	0.4
3255	0.7
3256	1.1
3258	2.2
3259	1.0
3261	1.3
3262	0.7
3265	1.8
3267	1.3
3268	2.5
3270	1.9
3271	1.3
3273	2.0
3275	0.5
3276	1.2
3277	0.6
3278	0.7
3279	0.6
3281	1.4
3282	0.2
3283	0.4
3287	0.6
3292	0.6
3294	0.2
3296	0.8
3297	0.4
3306	1.6
4358	0.2
4359	0.5
4360	0.4
4361	0.3
4371	0.3
7280	1.1
7377	0.5
8047	0.2
8048	0.2
8523	0.3
8850	0.3
9113	0.8
9183	0.6
9194	1.5
9196	3.6
9204	0.0
9209	1.0
9221	1.1

ROAD NUMBER	MILES
9223	1.5
9227	1.2
9228	0.6
9232	0.2
9236	0.3
9247	1.3
9252	0.9
9531	0.6
9532	0.1
9533	2.9
9534	1.3
9752	1.6
4090366	0.6
100A	2.3
100B	0.2
100D	0.0
101F	0.2
101FF	0.4
101G	0.6
101GA	0.2
101HA	1.3
102A	0.6
102C	1.8
102D	1.2
102G	0.2
102GA	0.2
102J	0.8
102K	0.1
102M	0.4
103A	0.1
103B	0.2
104A	0.3
104B	0.6
105A	0.5
105B	0.4
105C	0.5
105D	0.1
105E	0.2
105FA	0.3
105FB	0.2
105JA	0.0
105R	0.6
105RA	0.1
105RB	0.1
105T	0.2
105U	0.1
105V	0.9
106D	1.1
107B	0.1
107G	0.5
107H	0.3
107J	0.4
107L	0.5
108A	0.5

ROAD NUMBER	MILES
108AA	0.2
108B	1.1
108BB	0.2
108C	0.2
108D	0.5
108DD	0.6
108E	0.1
108EE	0.6
108F	0.5
108FF	0.6
108G	0.1
108JJ	0.7
108K	0.1
109A	0.2
109B	0.2
109C	0.2
109E	0.1
109F	0.1
110A	0.7
110AA	0.3
110AB	0.3
110B	0.1
110C	0.9
110D	0.3
110E	1.0
110EA	0.7
110F	0.4
110G	1.5
111B	3.1
111D	1.6
116A	2.7
116B	0.6
119A	0.2
119AA	0.3
119AB	0.3
119B	1.7
119BA	0.2
119BB	0.2
119BC	0.2
119BD	0.2
11A	1.1
11C	5.1
11D	0.5
11E	0.7
11G	1.1
11H	1.2
11K	0.8
11M	0.4
11N	0.3
11P	0.2
1225E	1.2
122A	0.1
122AA	0.6
122AB	0.1

ROAD NUMBER	MILES
122AC	0.4
122AD	0.1
122B	0.3
122BA	0.3
122C	0.7
122CA	0.1
122D	0.7
122DA	0.2
122DB	0.1
122DC	0.2
122DD	0.2
122DE	0.1
122E	1.3
122EA	0.4
122EB	0.5
122F	1.1
122G	0.4
122H	2.4
122HA	0.2
122K	0.3
122L	0.3
122M	0.3
122N	0.3
122NA	0.2
122NB	0.4
122P	0.2
122R	0.4
122S	2.0
122SA	0.4
122SB	0.4
122SC	0.2
122T	0.9
122TA	0.3
122TB	0.1
122TC	0.5
122TD	0.6
122U	0.5
122V	0.5
122VA	0.9
122VB	0.3
122W	0.5
122X	0.8
1242C	0.5
124Y	1.2
124YA	0.4
124YB	0.1
124YC	0.1
124YE	0.1
125C	0.1
125D	1.3
126A	0.1
126D	0.7
126DA	0.4
126E	0.3

ROAD NUMBER	MILES
126G	0.1
127A	0.3
127AA	0.2
127B	0.3
127BA	0.4
127BB	0.6
127BC	0.7
127BD	0.0
127BK	0.3
127C	2.1
127CA	0.1
127CB	0.1
127CE	0.4
127CF	0.0
127CG	0.1
127CP	0.1
127EE	0.7
127GG	0.4
127HH	0.3
127JJ	0.6
127L	0.2
127LL	0.1
127M	0.4
127N	0.4
127R	0.4
127T	0.2
127U	0.2
127V	0.4
127W	0.2
127WA	0.3
1287RA	0.2
128A	0.8
128B	0.5
128C	2.5
128CB	0.2
128CC	0.3
128CD	0.2
128CE	0.3
128CG	0.2
128D	0.3
128DA	0.3
128DB	0.1
128E	0.4
128EA	0.2
128F	0.5
128FA	0.2
128FB	0.2
128G	1.4
128H	1.1
128J	1.8
128JA	0.5
128JB	0.2
128JC	0.7
128JD	0.3

ROAD NUMBER	MILES
128JE	0.1
128K	0.9
128M	0.2
128N	0.4
128P	0.2
128Q	0.2
128R	0.1
129D	0.3
12A	2.2
12AA	0.3
12AB	1.5
12B	0.9
12BA	0.5
12C	0.8
12CC	0.8
12D	1.0
12E	3.0
12F	1.0
12FA	0.2
12G	1.7
12H	1.0
12J	2.2
12M	0.8
12P	0.3
12Q	1.5
12R	0.3
12T	0.2
12U	0.2
131B	0.2
131C	0.1
132-A	0.5
132-B	0.5
132C	0.3
132D	0.1
132F	0.2
132G	0.6
136AA	0.1
138A	0.7
138B	0.1
138C	0.1
139A	0.8
139B	2.2
139BA	0.3
139C	0.4
139E	1.6
139N	0.7
139R	1.3
139S	0.7
13B	0.1
140A	5.8
140B	0.8
140C	0.6
140D	0.3
140E	0.1

ROAD NUMBER	MILES
140F	0.4
140G	1.6
140GB	0.5
140H	0.4
140HA	0.0
140J	0.0
140JA	0.1
140K	0.1
140L	0.1
140S	0.2
141A	0.1
141AA	1.5
141B	0.2
141C	0.7
141CC	0.6
141D	0.3
141DD	0.4
141E	1.9
141EA	0.2
141F	0.3
141G	1.0
141GG	0.5
141HH	0.4
141JJ	0.1
141KK	0.1
141L	1.1
141NN	0.8
141SS	0.4
141V	0.3
141VV	0.1
143A	0.6
144A	0.3
144B	0.2
144C	0.1
144D	0.1
145C	0.4
145D	0.4
145F	0.8
145G	0.7
145H	0.2
145V	0.2
146A	0.5
146AA	0.1
146P	1.8
146S	0.7
146T	0.8
146V	0.8
146W	0.5
147A	2.5
147AA	0.5
147AB	0.2
147C	0.6
147D	0.3
14A	0.5

ROAD NUMBER	MILES
14AA	0.1
14AB	0.3
14B	0.5
14C	0.9
14D	0.5
151A	3.6
151B	1.2
152A	0.8
154CA	0.0
154D	0.5
154G	0.3
154H	0.2
159A	0.2
159C	0.2
15A	1.7
15B	0.6
160A	0.5
160AA	0.6
160AB	0.2
160B	0.4
160HA	0.6
160HB	0.7
160HC	0.7
160HD	0.3
160J	0.2
160K	0.3
161AA	0.1
165A	0.9
166A	0.9
166B	0.2
167A	0.5
16A	0.2
16C	0.0
171A	1.4
171AA	0.4
171AB	0.7
171BB	0.1
171C	1.3
171D	0.3
171DD	0.6
171E	0.4
171F	0.4
171FF	0.3
173A	0.3
173AA	0.2
173AB	0.9
173B	0.4
173C	0.1
173D	0.2
1742A	0.2
18A	0.0
18B	0.1
18C	0.1
190A	0.1

ROAD NUMBER	MILES
190B	0.1
190C	0.7
190D	0.1
191A	1.8
191BA	0.2
191BB	0.2
194A	0.1
2010A	0.4
2014A	0.4
2014B	0.5
2014C	0.1
2029C	0.0
2053A	0.6
2054B	0.1
2056A	0.3
2058A	1.0
2060A	0.5
2072A	0.0
2072B	0.4
2084A	1.7
2084B	0.4
2084C	0.1
2084D	0.1
2084E	0.4
2084F	0.2
2084FA	0.0
2084H	0.4
2084J	0.2
2086D	0.0
2087A	0.5
2091A	0.5
2091B	1.1
2091C	0.1
2096A	0.2
2107A	0.1
2109A	0.2
2109B	0.1
2113A	0.6
2122A	0.4
214R	0.1
2185A	0.8
2185B	0.2
2185C	0.3
2185D	0.2
2210A	0.3
2220A	0.7
2220B	0.5
2234A	0.2
2235A	0.8
2235B	0.7
2235C	0.3
2235D	1.0
2241A	0.2
2242A	0.4

ROAD NUMBER	MILES
2400A	0.3
2400B	0.3
2414A	0.5
24A	0.8
24B	0.6
24C	0.3
25C	1.0
25D	0.2
2616A	0.5
2704A	3.6
2709A	0.0
2709B	1.2
2709C	0.0
2709D	0.2
2709E	0.0
2709F	0.0
2710AA	0.5
2710B	0.7
2710D	0.3
2713B	0.2
2713BA	0.0
2713BB	0.7
2713BD	0.2
2713BF	0.3
2717B	0.3
2719A	0.1
2722A	2.0
2732A	0.0
2756A	0.2
2801A	0.8
2803A	1.4
2806B	1.5
3018A	0.0
3018B	0.3
301A	3.0
301B	0.1
301K	0.0
301L	0.0
302A	0.1
302B	0.1
302D	0.2
302-DEC	4.0
302E	0.1
302F	0.1
302G	0.6
302H	0.0
302U	0.8
302V	0.3
302W	0.2
303A	0.5
303AA	0.5
303B	0.0
303C	0.3
303D	1.4

ROAD NUMBER	MILES
303DA	0.5
303DB	0.5
303DC	0.4
303E	1.3
303EA	0.9
303F	0.0
303G	2.1
303GA	0.7
303H	2.4
303J	0.1
303K	0.1
303KA	0.0
303MA	1.0
303N	0.0
303P	0.0
303Q	0.0
305A	0.3
305AA	0.0
305AH	0.0
306J	0.2
306K	0.0
306M	0.1
306N	0.1
306P	0.6
306Q	0.1
306R	0.1
306S	0.7
306T	0.0
306U	0.0
306V	0.0
307A	0.0
307D	0.0
307M	0.0
307N	0.2
307NA	0.7
3102A	0.6
3102B	0.5
3102BA	0.4
3104B	0.1
3105A	0.5
3106A	1.2
3107A	0.1
3107B	0.6
3108A	0.3
3108B	0.2
3108C	0.2
3108D	0.3
310A	0.1
310AH	0.6
310B	0.1
310C	0.0
310CB	1.2
310E	0.0
310F	0.0

ROAD NUMBER	MILES
310G	0.1
310JL	0.3
310ZA	0.3
3110A	0.2
3114A	0.3
3116A	0.6
3117A	0.4
3117B	0.7
3117C	0.2
311A	0.0
311C	0.0
311D	0.0
3123A	0.5
3166A	0.1
317A	0.1
317B	0.0
317C	0.0
3202A	0.5
3206A	0.5
3209C	1.5
320AA	0.1
321A	0.9
321B	0.4
321C	0.5
321D	0.3
3221A	0.2
3227S	0.6
3234A	0.2
3236A	0.6
3244A	1.2
3244B	0.7
3244C	1.9
3255A	0.4
3258A	0.1
3265A	0.4
3265B	1.6
3268A	0.7
3268B	1.7
3269C	0.7
3273A	0.1
3273B	0.6
3287A	0.3
3287AA	0.1
339FA	3.2
343F	0.3
343G	0.1
343H	3.5
343HF	0.3
343K	0.0
3536B	0.9
354C	0.1
354D	0.1
354K	0.1
377A	1.2

ROAD NUMBER	MILES
38E	0.3
41A	0.1
41B	1.3
41BB	0.8
41BC	0.3
41C	1.4
41CA	0.2
41D	0.1
41DA	0.1
41E	0.2
41F	0.1
41FA	0.1
41G	0.4
41GA	0.2
41H	0.0
42A	1.1
42AB	0.6
44B	0.1
44BA	0.0
44BC	0.1
45A	0.5
45C	0.4
45D	0.2
45E	0.4
47B	0.5
48A	1.2
48B	1.0
48C	1.8
48D	0.0
49A	0.3
49B	0.2
4H	0.9
51A	1.6
51B	0.5
51C	0.5
56A	0.1
56B	0.3
56C	0.5
56D	0.5
57A	4.2
57AA	0.1
57AB	1.0
57AC	0.4
57AD	0.1
57AE	0.0
57BA	0.4
57C	1.0
57D	1.4
57DB	0.3
57DD	0.2
57E	0.5
57F	0.2
57G	1.2
57H	0.1

ROAD NUMBER	MILES
58A	0.6
58E	0.6
58F	0.2
58G	1.4
58H	0.4
59A	0.1
59B	0.8
605A	0.0
605B	0.4
605F	0.2
605FA	0.0
605M	0.3
605MA	0.0
605MB	0.1
62A	0.1
63A	0.5
64AA	0.7
64AB	0.2
64AC	1.6
64C	2.4
64E	1.8
64EA	2.4
65A	0.9
65AA	0.7
65B	0.4
684A	0.0
688A	0.0
688C	0.1
688F	0.1
688G	0.1
688Q	0.0
700A	0.5
700C	0.1
701B	0.6
701BA	0.7
701D	0.3
701E	0.3
701G	1.3
701GA	0.6
701H	0.4
701J	0.2
712A	0.3
712B	0.1
713A	0.5
714C	0.7
716A	0.4
716B	0.2
716C	0.6
716D	0.2
716E	0.4
716F	0.2
716J	0.6
716K	0.6
716L	0.2

ROAD NUMBER	MILES
717B	0.5
717C	0.6
717CA	0.2
717D	0.2
71A	0.1
71B	0.6
720A	0.2
728A	0.2
728B	2.4
728E	0.4
730A	0.3
730B	0.1
730C	0.2
730F	0.6
735A	0.4
735B	0.3
735C	0.1
735D	0.1
735E	0.3
735F	0.1
735G	0.1
735H	0.2
735K	0.1
735M	0.1
735N	0.1
735P	0.7
736A	1.3
736B	0.5
736BA	0.3
736BC	1.1
736F	0.5
736FA	1.0
736FB	0.1
7377B	0.2
7377C	0.2
744B	0.1
746A	0.3
746AA	0.3
746AJ	0.5
746C	0.8
746E	0.3
746F	0.2
746G	0.5
746GA	0.2
746H	0.1
746K	0.7
747A	0.6
749A	1.9
749B	1.0
749C	0.2
749E	0.1
74A	3.4
74AA	0.4
74AB	0.7

ROAD NUMBER	MILES
74AC	0.6
74AD	0.1
74AE	0.3
74AF	1.6
74AG	0.1
74B	1.3
74BA	0.2
74C	0.2
74F	1.8
74G	0.4
74L	0.8
74LA	0.1
75A	0.4
75B	0.1
75C	1.3
75D	0.2
75E	1.7
75EA	0.4
75L	0.7
76A	0.1
76AA	0.4
76BB	0.4
76CC	0.6
76DD	0.3
76F	0.4
76FF	0.4
76G	0.7
76GG	0.3
76H	0.3
76S	0.4
76T	0.4
779B	0.4
781C	0.5
781J	0.7
781K	0.2
782A	0.8
785A	0.4
785B	1.5
785BA	0.7
787A	0.5
787B	0.7
787C	0.4
793C	0.5
793D	0.9
796AD	0.3
797B	0.4
79BB	0.2
804A	0.1
812A	0.9
812B	0.2
81A	1.0
81AA	0.2
81AB	0.1
81B	0.9

ROAD NUMBER	MILES
900A	0.2
900B	0.3
9012A	0.4
9059D	0.4
905E	1.4
90A	1.1
90B	1.8
90BC	0.3
90BD	0.0
90BF	0.6
90BG	0.3
90BH	0.2
90BJ	0.2
90BK	0.2
90BL	0.4
90BM	0.1
90BN	0.6
90BR	0.1
90FA	0.1
90G	0.4
90J	0.2
90JA	0.2
90M	0.7
90MA	0.6
90MB	0.0
90MC	0.0
90N	0.1
90P	0.5
90PA	0.3
90RA	0.4
90RB	0.2
90S	0.4
90U	0.6
9112A	1.2
9121E	0.5
9121F	2.0
9121G	1.9
9121GA	1.0
9122E	1.3
9122F	2.3
9123E	1.2
9123L	0.4
9124K	1.0
9128D	0.7
9128E	0.7
9136E	0.4
9138E	1.2
9138R	0.0
9141L	0.9
9153V	0.7
9183CB	0.5
9183W	0.4
9183X	0.0
9187E	2.6

ROAD NUMBER	MILES
9191F	1.4
9191J	0.5
9191R	0.6
9191T	0.7
9192C	0.1
9192D	0.6
9192R	0.7
9193B	0.4
9194B	0.8
9194D	2.2
9194E	0.3
9194J	0.3
9194L	0.3
9194M	0.0
9194MA	0.0
9194R	2.4
9194S	0.4
9194U	0.2
9194W	0.1
9196C	1.0
9196M	0.8
9196MA	0.3
9197B	0.9
9197F	1.0
9197J	0.5
9197M	2.2
9197MA	0.6
9197MB	0.1
9197N	1.7
9197Y	0.3
9198B	0.8
9198BA	0.1
9198U	0.7
9198UA	0.8
9198UB	0.1
9199G	0.0
9199J	0.2
9199K	0.1
9199M	1.2
9199MA	0.5
9199MB	0.2
9201A	1.1
9201BA	0.3
9201BB	0.1
9201BC	0.8
9201G	0.7
9201J	1.0
9201K	1.9
9202B	0.4
9202D	0.2
9202E	1.6
9202EA	0.4
9202F	0.7
9202J	0.7

ROAD NUMBER	MILES
9202K	1.7
9202R	0.8
9203B	0.7
9203C	0.3
9203H	2.5
9203K	2.1
9203KA	0.3
9204C	2.6
9204D	0.2
9204K	1.0
9205A	2.7
9205C	2.0
9205H	1.4
9206B	0.2
9206G	0.1
9206J	2.0
9206JA	0.1
9206L	0.2
9206N	0.7
9207J	0.3
9207K	0.6
9208C	2.6
9208I	2.4
9208J	1.0
9209B	0.0
9209F	0.1
9209G	0.6
9209J	0.9
9209K	1.7
9209KA	0.8
9209KB	0.3
9211E	1.1
9211F	0.5
9212F	0.3
9212K	1.8
9212KA	0.9
9212KB	0.4
9213F	0.2
9216E	0.8
9216EA	0.1
9216F	0.3
9216J	0.6
9216K	1.6
9217E	1.6
9217EA	0.2
9217EB	0.3
9217EC	0.1
9217J	1.3
9218B	1.1
9218E	0.3
9218F	3.5
9218FA	0.2
9218G	2.3
9219E	1.2

ROAD NUMBER	MILES
9219G	2.1
9219GA	0.1
9219H	0.3
9219J	0.4
9221A	2.1
9221AA	0.1
9221AB	1.1
9221AC	0.2
9221AD	1.0
9221K	0.9
9221KA	0.6
9222B	0.6
9222Q	0.4
9222R	1.4
9222T	0.2
9222X	0.3
9223A	0.1
9223B	0.7
9223BA	0.2
9223BB	0.2
9223C	0.2
9223G	0.6
9223JA	0.7
9223N	0.5
9223U	2.1
9223W	0.7
9223WA	0.5
9224G	0.8
9224J	0.8
9224P	0.5
9224W	1.6
9225EB	0.2
9225N	0.9
9225S	0.1
9225U	0.6
9225W	0.5
9226A	0.3
9226AB	0.4
9226C	0.5
9226D	0.9
9226M	0.6
9226Q	1.6
9226S	0.8
9226Y	0.2
9227D	0.6
9227J	3.5
9227K	0.2
9228B	0.2
9228C	1.2
9228E	1.2
9228F	1.5
9228FA	0.1
9228G	0.6
9228H	0.2

ROAD NUMBER	MILES
9228P	1.3
9228PA	0.7
9228S	0.6
9228V	1.5
9228W	1.3
9228WA	0.5
9228X	1.6
9229A	0.6
9229M	0.0
9229V	0.3
9229X	1.1
9232C	0.1
9232W	1.7
9233C	1.6
9234B	1.0
9234D	0.6
9235E	1.5
9236B	0.4
9236D	0.5
9236E	0.2
9236F	1.4
9236FA	0.3
9237C	0.4
9237CA	0.1
9239C	1.1
9245B	1.1
9247A	0.6
9247B	0.4
9255E	0.4
9255EB	0.0
9255EC	0.2
9421Z	0.6
9424K	0.2
9424R	1.1
9431M	0.4
9432F	0.8
9432Q	1.0
9432S	0.2
9432U	0.5
9432V	0.3
9432W	1.0
9432X	0.2
9439E	0.1
9441G	0.2
9441J	0.3
9441M	2.6
9441U	1.1
9521B	0.9
9521K	0.5
9521L	1.4
9521M	0.3
9521N	0.6
9521P	0.3
9521Z	0.6

ROAD NUMBER	MILES
9531A	0.8
9531D	1.1
9531E	0.5
9531F	0.4
9531G	0.5
9531H	0.6
9531I	1.7
9531IA	0.1
9531IB	0.6
9531IC	0.3
9531J	1.6
9531JA	0.3
9531JB	0.2
9531K	1.4
9531KA	0.3
9531L	2.0
9531LA	0.1
9531LB	0.2
9531R	0.2
9531T	1.1
9531U	0.5
9531UA	0.1
9531UB	0.4
9531UC	0.2
9532A	0.5
9532B	0.6
9532C	0.5
9532F	1.8
9532FA	0.1
9532H	1.0
9532J	0.9
9532K	0.3
9532KA	0.1
9532L	0.6
9532M	0.6
9532MA	0.5
9532N	0.4
9532R	1.4
9534A	0.6
9534AA	0.5
9534E	0.6
9534G	0.3
9534J	0.2
9536A	0.4
9536K	1.2
9536M	0.7
9536N	0.4
9541B	0.9
9541D	0.8
9541F	0.1
9541H	1.2
9541R	0.7
9586J	0.6
9636V	0.0

ROAD NUMBER	MILES
9731Q	0.0
9731R	1.2
9731X	0.5
97A	0.1
97LL	0.5
97MM	0.1
9822C	1.8
9Q	0.3

Coconino Roads

ROAD NUMBER	MILES
68	3.2
75	5.3
78	1.6
80	5.1
82	0.8
91	9.5
92	4.6
104	4.3
124	6.9
125	4.3
127	10.7
128	6.8
129	0.4
132	19.1
133	4.5
135	0.8
146	13.9
151	9.9
153	3.6
156	2.0
160	4.5
171	10.1
191	3.5
193	3.4
219	3.3
222	6.4
226	9.5
228	3.1
231	27.4
235	9.1
236	4.5
237	4.9
239	5.4
240	11.6
244	11.7
245	3.1
247	0.7
253	8.5
296	4.7
301	5.4
303	4.7
390	2.8
414	3.1
416	0.0
418	11.1
419	1.1
420	13.6
498	10.1
506	6.1
511	5.6
514	7.1
515	4.6
516	7.8

ROAD NUMBER	MILES
518	8.4
519	1.4
522	5.7
523	4.2
526	6.4
527	10.2
530	10.3
532	2.2
533	5.0
535	10.3
536	3.6
538	12.1
539	6.8
546	4.4
549	3.1
550	2.9
552	5.3
553	3.7
556	4.7
557	6.8
622	1.2
627	2.9
631	3.1
648	3.1
649	7.7
651	1.4
655	2.7
657	1.9
665	0.1
667	0.6
683	2.2
695	1.2
700	15.7
703	1.4
707	1.8
714	2.2
716	1.4
720	2.7
725	2.3
741	2.3
742	0.9
743	15.2
753	0.2
760	9.0
762	5.1
765	1.7
766	0.5
767	1.9
768	0.3
770	2.2
772	2.6
773	4.1
776	5.9
777	6.2

ROAD NUMBER	MILES
778	1.8
779	0.1
781	0.0
783	0.5
789	2.4
790	3.8
791	0.7
792	3.6
794	2.8
801	1.5
812	0.2
859	0.8
860	1.5
861	2.7
862	1.4
863	3.4
864	0.1
865	3.7
866	2.1
867	2.8
870	0.0
871	2.5
930	2.5
933	0.1
934	0.0
935	0.3
6001	1.2
6005	0.5
6006	0.6
6007	0.7
6009	0.7
6010	2.2
6012	2.0
6013	0.8
6014	0.2
6015	1.9
6016	0.3
6017	0.7
6018	0.5
6019	0.7
6028	0.7
6037	0.4
6042	2.7
6043	0.8
6045	0.4
6048	0.8
6050	0.9
6051	1.2
6052	0.5
6064	1.1
6065	0.8
6077	4.4
6078	2.4
6113	0.9

ROAD NUMBER	MILES
6114	1.8
6115	1.2
6116	0.6
6142	0.7
6146	0.3
6149	2.3
6211	1.6
6213	1.5
6214	0.4
6215	0.6
6216	1.1
6218	1.6
6219	0.3
6220	0.9
6221	0.2
6222	0.7
6223	0.8
6224	0.7
6225	0.4
6226	0.8
6227	4.2
6231	0.6
6232	1.0
6233	0.5
6234	0.3
6235	0.3
6236	0.6
6237	0.3
6238	0.2
6239	0.4
6240	1.1
6242	0.5
6244	0.3
6245	1.0
6246	0.3
6247	0.3
6248	0.6
6249	1.2
6250	0.5
6251	1.6
6252	1.5
6253	0.5
6254	0.3
6255	0.7
6256	0.3
6257	0.2
6258	0.6
6259	1.3
6261	0.2
6262	0.7
6263	0.6
6264	0.4
6265	0.5
6266	0.5

ROAD NUMBER	MILES
6267	0.2
6268	0.4
6269	0.2
6270	0.3
6271	0.5
6272	0.3
6273	1.5
6274	0.4
6275	4.1
6276	0.8
6277	1.4
6302	0.7
6330	2.5
6337	0.3
6338	0.3
6340	0.5
6345	0.4
6347	0.3
6348	0.1
6349	0.1
6350	0.2
6351	0.4
6352	1.7
6353	2.1
6354	1.4
6355	0.3
6356	0.5
6357	1.9
6360	0.4
6361	0.2
6391	1.7
6392	0.4
6394	2.5
6398	0.6
6399	2.1
6400	1.3
6401	0.9
6402	1.5
6403	0.5
6404	0.9
6405	1.7
6406	1.0
6407	0.9
6408	0.7
6411	1.1
6413	1.5
6416	0.4
6432	0.5
6434	0.5
6435	0.7
6436	0.6
6437	1.0
6439	0.5
6440	0.6

ROAD NUMBER	MILES
6441	0.9
6442	0.5
6796	1.6
9002	1.9
9005	1.0
9011	0.4
9012	0.3
9013	0.4
9014	0.4
9015	0.6
9017	1.2
9018	0.6
9019	0.2
9020	1.7
9021	0.3
9024	3.0
9026	0.3
9110	0.3
9111	0.5
9112	0.4
9113	0.5
9130	0.1
9132	0.6
9133	0.2
9136	0.3
9137	0.1
9139	2.9
9141	1.2
9142	1.2
9143	0.2
9144	0.3
9145	1.4
9146	0.1
9147	0.2
9148	0.3
9149	0.3
9157	0.2
9159	0.7
9160	1.5
9172	0.2
9173	0.2
9180	3.6
9181	0.7
9214	0.5
9216	0.9
9217	0.1
9218	0.2
9219	0.4
9224	0.2
9227	0.3
9228	0.3
9229	1.0
9230	0.3
9231	0.1

ROAD NUMBER	MILES
9232	0.5
9233	0.2
9234	0.3
9237	0.9
9239	0.6
9258	0.6
9359	0.0
9377	1.1
9410	0.5
9411	1.3
9412	1.6
9414	2.1
9415	0.5
9419	0.3
9420	2.3
9423	0.6
9455	0.4
9456	0.6
9457	0.8
9458	1.3
9459	2.2
9460	1.0
9462	1.1
9463	0.1
9464	1.6
9465	0.3
9466	2.9
9467	0.5
9468	0.5
9469	0.2
9470	0.1
9471	0.3
9472	2.5
9473	1.5
9474	0.5
9477	0.6
9478	0.2
9480	0.3
9482	0.4
9491	0.5
9495	0.9
9497	1.2
9498	2.5
9499	1.7
9715	0.4
9716	0.1
9720	2.4
9723	0.0
9725	0.9
00003A	0.5
00003B	0.4
00003C	0.7
00003E	4.1
00003F	0.2

ROAD NUMBER	MILES
00003G	1.1
00003H	1.0
00003J	1.0
00003K	0.4
00003L	0.3
00003M	0.5
00003N	1.5
00003P	1.2
00003Q	0.0
00003R	0.3
00003S	0.3
00003T	0.8
00068A	0.3
00068B	0.1
00075A	0.9
00075B	1.7
00078A	7.3
00078B	2.3
00078C	0.7
00080A	3.2
00080B	1.5
00080C	0.4
00082B	3.3
00082E	2.1
00089A	0.1
00090A	0.9
00090B	0.5
00090C	0.8
00090D	0.4
00090E	2.0
00090F	0.4
00090G	0.2
00090H	4.9
00090J	0.9
00090K	0.2
00090L	0.5
00090M	0.8
00090N	1.5
00091A	4.0
00091B	1.4
00091C	3.0
00091H	0.6
00092A	1.6
00092C	1.2
00092D	0.9
00124B	0.9
00124C	3.5
00124D	2.3
00124E	0.5
00124F	0.5
00124H	5.1
00124J	2.5
00124K	1.1
00124L	0.3

ROAD NUMBER	MILES
00124M	0.4
00127A	2.6
00127B	2.2
00127C	1.8
00127D	0.8
00127E	1.0
00128B	5.4
00128C	2.6
00128D	1.2
00129A	0.4
00131A	0.6
00132A	4.1
00132B	5.8
00132D	12.4
00132G	1.1
00132H	1.2
00132J	0.9
00132K	1.2
00132L	1.3
00132M	1.0
00132P	0.8
00132Q	3.4
00133A	1.8
00135B	0.0
00135C	1.6
00135E	0.0
00135G	0.4
00135J	0.9
00135L	0.5
00151A	1.0
00151B	0.6
00151E	3.9
00153A	0.7
00153B	0.4
00153E	0.9
00164A	0.3
00164B	3.5
00164C	2.5
00164D	0.1
00164E	0.2
00164F	0.1
00164G	0.1
00164H	3.7
00171B	0.5
00171C	3.6
00171E	1.8
00180A	0.1
00180B	0.1
00191A	1.3
00191C	3.4
00219A	2.1
00219B	2.1
00222A	3.6
00222B	1.3

ROAD NUMBER	MILES
00226A	0.2
00226B	0.7
00226C	2.7
00226D	0.1
00226E	2.7
00226F	1.6
00226H	0.3
00228A	1.2
00228B	0.7
00228C	0.8
00231A	3.2
00231B	3.7
00231C	2.0
00231D	2.9
00231E	2.2
00231F	0.1
00231G	0.2
00231H	1.4
00231J	2.5
00231K	1.0
00231L	3.0
00231M	0.7
00231N	1.2
00235A	2.4
00235B	4.0
00235C	1.7
00235D	0.2
00235F	0.9
00235G	0.9
00235H	0.5
00235J	3.4
00235K	1.2
00236A	5.1
00236B	1.0
00236C	1.7
00237A	3.0
00237E	1.1
00239A	1.0
00240A	1.0
00240B	1.3
00240C	0.6
00240D	1.1
00244A	2.1
00244B	2.9
00244C	1.2
00253A	2.4
00253B	5.8
00253C	0.1
00253D	1.4
00253E	1.0
00253F	1.6
00253G	0.9
00253H	0.5
00253J	0.1

ROAD NUMBER	MILES
00296A	2.0
00296B	1.0
00301A	1.8
00301B	1.2
00301D	3.5
00301F	1.9
00390A	0.6
00390B	0.7
00418A	0.5
00418B	0.7
00418X	1.6
00420A	1.7
00420B	1.1
00420C	0.8
00420D	1.2
00420E	0.7
00420F	1.2
00420G	0.9
00420H	0.7
00420K	0.5
00420L	0.3
00420M	0.1
00420P	0.4
00420Q	0.0
00506A	0.8
00510A	2.3
00510B	4.8
00510C	0.2
00510D	1.7
00510E	2.2
00510F	0.5
00510G	1.3
00510M	0.1
00510N	1.1
00511A	1.2
00514A	1.7
00514B	1.0
00515A	2.2
00515B	1.3
00515C	2.8
00515D	1.0
00515E	1.3
00515H	0.8
00517B	0.6
00517C	1.3
00517D	0.4
00518B	1.5
00518C	2.9
00519C	2.2
00526A	4.0
00526B	1.2
00526C	0.6
00526D	2.0
00526E	0.8

ROAD NUMBER	MILES
00527A	3.8
00527B	3.1
00527C	1.1
00527D	0.8
00527E	2.4
00527F	0.7
00530A	5.9
00530B	1.4
00530C	1.1
00530D	2.0
00530E	0.6
00533A	0.2
00533B	1.8
00533C	0.6
00533E	1.1
00533F	1.7
00535A	4.2
00535B	4.4
00535C	2.0
00535D	3.3
00535E	0.4
00535F	1.5
00536A	5.5
00536B	0.5
00536C	1.7
00536D	0.8
00538A	2.1
00538B	2.9
00538C	0.7
00538D	1.0
00538E	1.8
00538F	1.3
00538G	1.5
00538H	0.6
00538J	1.8
00538K	1.3
00538L	0.4
00539A	1.9
00539B	1.3
00539C	0.8
00545A	5.2
00545B	3.5
00545D	0.2
00545E	0.7
00545F	0.7
00549C	1.9
00549D	0.3
00550A	3.0
00552A	0.5
00552B	1.4
00552C	2.0
00552D	1.0
00552E	1.4
00552F	0.1

ROAD NUMBER	MILES
00552G	0.1
00552H	0.5
00553A	2.5
00553B	1.1
00553C	0.6
00556A	0.3
00556B	0.6
00557A	0.7
00557B	0.3
00631B	0.2
00631C	0.2
00631D	0.2
00631E	0.4
00651A	0.1
00651B	0.1
00655B	0.8
00657A	1.3
00665B	0.1
00668D	1.9
00683B	0.3
00683C	1.2
00700A	0.4
00700B	0.8
00700C	0.5
00700E	0.5
00700F	0.9
00700G	0.8
00700H	0.6
00700J	0.4
00700K	0.2
00700L	0.9
00700M	0.2
00707A	1.1
00707B	0.7
00707C	0.5
00707D	1.0
00714A	0.3
00714C	1.1
00714D	1.1
00714E	0.6
00716A	1.4
00716B	0.8
00721B	0.9
00741A	1.0
00741B	0.7
00741C	0.1
00753A	0.2
00760A	0.7
00762B	0.7
00762D	0.5
00762E	1.0
00762L	1.0
00762M	1.1
00766A	0.6

ROAD NUMBER	MILES
00773A	0.0
00773B	0.7
00778A	1.2
00790A	0.6
00791A	1.2
00861A	0.3
00866A	1.1
00867A	1.5
00867C	0.7
00867D	1.1
00930A	0.9
00933A	0.8
00933B	1.5
00989C	0.2
00989D	0.2
06015A	0.8
06028B	1.1
06043N	1.3
06064A	0.8
06064B	0.6
06064C	0.6
06064D	3.4
06064E	0.5
06064F	0.5
06077A	0.7
06077B	0.6
06077C	0.8
06077D	0.4
06078A	1.7
06352A	1.7
06352B	0.4
06416A	0.7
09001D	0.3
09001E	4.2
09001F	0.2
09001G	1.7
09001H	1.0
09001K	0.3
09001L	1.9
09001M	0.8
09001N	2.1
09001P	1.8
09001R	0.7
09001S	0.5
09001T	0.2
09001U	1.2
09001W	0.9
09001X	0.3
09002D	2.8
09002F	5.4
09002G	1.2
09002H	1.4
09002K	2.0
09002L	1.2

ROAD NUMBER	MILES
09002M	1.9
09002N	0.4
09002P	1.1
09002R	2.0
09002S	1.5
09002T	0.7
09002V	3.6
09002W	1.2
09002X	0.9
09003D	0.8
09003E	2.1
09003F	0.2
09003G	3.2
09003H	0.3
09003K	2.0
09003L	0.4
09003M	0.1
09003N	1.6
09003P	0.5
09003R	1.5
09003S	2.4
09003T	0.1
09003W	4.3
09003X	0.7
09003Y	0.7
09004D	0.2
09004E	0.2
09004F	2.0
09004G	0.4
09004H	1.8
09004K	3.7
09004L	1.5
09004M	4.9
09004N	1.4
09004P	2.6
09004R	1.1
09004S	0.8
09004T	1.0
09004U	1.3
09004X	0.4
09005A	0.1
09005D	1.4
09005E	0.2
09005F	0.8
09005G	3.5
09005L	1.6
09005M	0.9
09005N	1.8
09005P	0.6
09005R	1.5
09005U	1.1
09005V	0.5
09005X	0.4
09005Y	1.2

ROAD NUMBER	MILES
09006D	1.7
09006E	1.2
09006F	0.6
09006G	0.6
09006H	0.2
09006L	1.1
09006M	0.8
09006P	1.4
09006R	2.3
09006S	1.4
09006T	0.4
09006Y	0.7
09007D	1.9
09007E	0.7
09007F	1.7
09007G	0.6
09007H	0.6
09007J	1.9
09007K	1.2
09007L	0.6
09007M	0.5
09007N	2.9
09007P	3.0
09007R	1.0
09007S	1.0
09007T	1.9
09007U	0.2
09007X	0.4
09007Y	0.2
09008D	0.2
09008E	0.7
09008F	0.7
09008G	2.2
09008H	0.2
09008J	1.7
09008K	0.6
09008L	3.2
09008M	0.4
09008N	1.0
09008P	1.4
09008S	1.0
09008U	2.0
09008Y	1.1
09009D	1.9
09009E	0.5
09009F	0.2
09009G	0.8
09009H	0.5
09009K	2.2
09009L	1.1
09009M	1.8
09009N	1.0
09009R	0.4
09009S	0.8

ROAD NUMBER	MILES
09009T	0.5
09009V	0.4
09009Y	0.3
09010N	0.9
09010P	0.3
09010Q	0.7
09010R	0.9
09010S	0.1
09010T	0.4
09010U	0.2
09010V	0.5
09010W	0.3
09010X	0.2
09010Y	0.5
09011A	0.4
09011B	0.4
09011C	0.2
09011E	1.5
09011F	0.8
09011G	1.7
09011J	0.2
09011K	1.0
09011L	0.5
09011P	0.5
09011Q	0.4
09011R	0.5
09011S	0.6
09011T	0.2
09011U	0.3
09011V	0.2
09011W	0.4
09011X	0.5
09011Y	0.2
09012A	0.3
09012B	0.2
09012C	0.1
09012D	0.4
09012E	0.1
09012F	0.2
09012G	0.3
09012H	0.7
09012J	0.9
09012K	0.2
09012L	3.7
09012Q	0.3
09012R	0.3
09012S	0.3
09012T	0.3
09012U	0.4
09012V	0.4
09012W	0.2
09012X	0.4
09012Y	0.4
09013A	0.8

ROAD NUMBER	MILES
09013B	0.3
09013C	0.4
09013D	0.4
09013E	0.1
09013F	0.2
09013G	0.3
09013H	1.1
09013J	0.6
09013K	0.3
09013M	1.5
09013P	0.5
09013Q	0.1
09013R	0.5
09013S	0.5
09013T	0.3
09013U	0.3
09013V	0.3
09013W	0.2
09013Y	0.2
09014A	0.2
09014B	0.7
09014D	0.2
09014E	0.4
09014F	0.9
09014G	0.1
09014H	1.5
09014J	0.4
09014K	1.8
09014L	2.4
09014M	0.2
09014N	0.5
09014P	1.3
09014Q	0.3
09014R	0.5
09015A	0.2
09015B	0.3
09015C	0.4
09015D	0.1
09015E	0.3
09015F	0.2
09015H	1.3
09015J	0.3
09015L	1.8
09015P	0.3
09015Q	1.2
09015R	0.7
09015S	0.2
09015T	0.5
09015U	0.2
09015X	0.1
09015Y	0.2
09016D	0.4
09016F	0.9
09016H	0.3

ROAD NUMBER	MILES
09016J	0.2
09016M	0.4
09016N	1.7
09016P	1.4
09016R	0.1
09016S	0.3
09016T	0.7
09016U	0.5
09017A	0.9
09017D	0.4
09017E	1.0
09017F	0.8
09017G	0.5
09017K	0.3
09017P	2.3
09017X	0.3
09018A	0.1
09018B	0.3
09018C	0.3
09018D	0.3
09018F	0.7
09018G	1.9
09018H	2.7
09018J	1.0
09018K	0.1
09018M	1.4
09018N	1.7
09018P	0.5
09018R	0.1
09018S	0.5
09018T	0.1
09019B	6.9
09019C	0.1
09019E	0.3
09019F	0.2
09019G	1.5
09019H	0.4
09019J	0.6
09019K	0.3
09019M	1.0
09019P	0.2
09019Q	0.1
09019X	0.6
09020A	2.5
09021A	0.6
09021B	0.2
09021C	0.6
09021D	0.5
09021E	0.2
09021F	0.3
09021G	0.4
09021H	0.3
09021J	0.3
09021K	0.2

ROAD NUMBER	MILES
09021L	0.8
09021M	1.0
09021N	0.4
09021P	0.3
09021Q	0.3
09021R	0.3
09021S	0.2
09021T	0.2
09021U	0.7
09022W	0.4
09023A	0.8
09023B	0.2
09023C	0.8
09024A	1.3
09024C	0.5
09024D	0.3
09025R	1.3
09025S	1.1
09025T	1.0
09025V	0.1
09026A	0.4
09026B	0.9
09026C	0.7
09111A	0.4
09111B	0.2
09111C	0.2
09111D	1.4
09111F	0.3
09111G	0.2
09111H	0.9
09111J	0.3
09111L	0.9
09111M	0.6
09111N	1.0
09111P	1.0
09111Q	0.3
09111R	0.4
09111S	0.4
09111T	0.6
09111U	0.2
09111V	1.1
09111W	0.4
09111X	0.6
09111Y	0.6
09112A	0.1
09112B	1.3
09112C	1.5
09112F	0.1
09112G	0.1
09112H	0.1
09112J	1.1
09112K	0.1
09112L	0.4
09112M	1.2

ROAD NUMBER	MILES
09112N	0.5
09112P	0.5
09112Q	0.7
09112R	0.3
09112S	0.5
09112T	0.4
09112U	0.3
09112V	0.4
09112W	0.3
09112X	0.2
09112Y	1.5
09113A	0.1
09113B	1.7
09113C	0.8
09113D	0.6
09113E	0.1
09113F	1.6
09113G	0.3
09113H	0.6
09113J	0.9
09113P	0.2
09113Q	1.3
09113R	0.8
09113S	0.4
09113Y	0.1
09114C	0.7
09114D	0.5
09114E	1.1
09114F	0.8
09114G	1.7
09114H	0.8
09114J	0.8
09114L	0.1
09114M	0.2
09114R	0.2
09114S	1.4
09114T	0.2
09114U	0.2
09114V	0.9
09114W	0.2
09114X	0.2
09114Y	0.1
09117G	0.9
09117J	2.0
09117K	0.6
09117L	1.2
09117M	1.3
09117P	0.3
09117Q	0.7
09117R	0.5
09117V	0.8
09117W	1.8
09121B	1.2
09121C	0.9

ROAD NUMBER	MILES
09121D	1.0
09121E	0.5
09121G	1.3
09121K	1.6
09121N	0.1
09121Q	3.5
09121R	0.7
09122B	2.2
09122C	0.4
09122D	0.3
09122E	0.9
09122F	0.2
09122G	0.3
09122H	0.5
09122J	1.3
09122K	0.1
09122L	0.2
09122N	2.1
09122P	3.4
09122R	0.9
09122S	0.5
09123B	0.5
09123C	0.6
09123D	0.7
09123E	1.1
09123G	0.3
09123J	0.7
09123K	0.5
09123L	1.1
09123M	1.1
09123N	0.8
09123Q	2.7
09123R	0.9
09124C	2.0
09124D	0.3
09124E	0.9
09124G	0.4
09124H	0.1
09124J	0.1
09124K	0.2
09124L	0.7
09124N	1.7
09124Q	1.5
09124R	1.9
09125B	1.2
09125C	1.3
09125D	0.5
09125E	1.8
09125F	1.3
09125G	2.5
09125H	0.2
09125M	1.4
09125Q	0.9
09125R	0.9

ROAD NUMBER	MILES
09125U	1.6
09126D	2.0
09126E	2.3
09126G	1.7
09126H	0.4
09126J	0.2
09126K	0.1
09126M	0.7
09126N	1.0
09126R	0.2
09127C	0.6
09127D	0.8
09127E	0.3
09127F	0.3
09127G	0.1
09128C	1.0
09128D	0.7
09128E	0.7
09128F	6.6
09128G	2.1
09128H	0.3
09128J	1.1
09128L	0.0
09128M	1.3
09128N	0.2
09128P	0.7
09128R	0.9
09128Y	0.9
09129C	0.4
09129D	1.7
09129E	1.0
09129N	4.6
09129Y	0.7
09130A	0.3
09130B	0.1
09130F	0.1
09130G	0.8
09130J	0.1
09130L	0.4
09130M	0.1
09130N	0.1
09130P	0.2
09130Q	0.6
09130W	0.4
09131A	0.4
09131B	1.0
09131C	0.1
09131D	1.5
09131E	0.5
09131H	0.5
09131L	0.1
09131T	0.4
09131U	0.2
09131V	0.2

ROAD NUMBER	MILES
09131W	0.1
09131X	0.8
09131Y	0.5
09132A	1.1
09132D	0.7
09132E	0.4
09132F	0.1
09132M	0.2
09132N	0.2
09132P	0.4
09132Q	0.2
09132R	0.1
09132T	1.2
09132U	0.2
09132V	0.1
09132W	0.1
09133A	0.8
09133B	0.4
09133C	2.6
09133D	0.9
09133E	0.3
09134A	0.6
09134B	1.7
09134C	0.6
09135A	0.2
09135B	2.2
09135C	0.7
09135D	1.6
09135F	0.6
09135G	0.3
09135H	0.5
09136C	0.5
09136D	0.3
09137A	0.6
09137B	0.5
09137C	1.4
09137D	0.6
09137E	0.7
09139A	0.6
09140E	1.4
09140F	0.3
09140G	1.0
09140H	0.5
09140J	0.1
09140K	0.6
09140L	0.7
09140M	0.1
09140N	0.3
09140Q	0.3
09140R	1.0
09140S	1.6
09140T	0.1
09140U	0.1
09140V	0.2

ROAD NUMBER	MILES
09140W	1.8
09140X	1.3
09140Y	0.3
09141A	1.9
09141B	1.1
09141C	0.7
09141D	1.0
09141E	1.8
09141F	1.2
09141G	0.1
09141H	0.2
09141J	0.4
09141K	0.1
09141L	0.4
09141M	0.5
09141N	1.2
09141P	0.9
09141Q	0.5
09141R	0.2
09141S	0.3
09141T	1.5
09141U	1.7
09141V	0.4
09141W	0.5
09141X	0.9
09141Y	0.6
09142A	0.1
09142B	0.6
09142C	0.8
09142D	1.6
09142E	0.4
09142F	0.6
09142H	0.1
09142J	0.1
09142K	0.4
09142L	1.0
09142M	0.3
09142N	0.1
09142P	0.4
09142Q	0.2
09142R	0.1
09142S	0.4
09142T	0.2
09142U	0.4
09142V	0.9
09142W	0.1
09142X	0.2
09142Y	0.4
09143A	1.0
09143B	0.4
09143C	0.8
09143D	0.4
09143E	3.1
09143F	0.5

ROAD NUMBER	MILES
09143H	0.6
09143J	0.2
09143K	0.2
09143M	0.2
09143N	0.5
09143P	0.5
09143Q	0.2
09143R	0.3
09143S	0.2
09143T	3.7
09143U	0.7
09143V	0.2
09143W	0.3
09143X	0.5
09143Y	0.2
09144A	0.1
09144B	0.2
09144C	0.4
09144D	2.6
09144E	0.5
09144F	0.4
09144G	1.4
09144H	0.2
09144J	0.2
09144K	0.9
09144L	0.1
09144M	0.6
09144N	0.3
09144P	0.7
09144Q	0.7
09144R	0.9
09144S	1.4
09144T	0.3
09144U	0.6
09144V	1.5
09144W	0.3
09144X	1.6
09144Y	1.8
09145A	1.0
09145B	1.5
09145C	0.6
09145D	0.7
09145E	1.4
09145F	0.6
09145G	0.7
09145H	0.6
09145M	2.0
09145P	0.1
09145Q	0.1
09145R	0.3
09145S	1.3
09145T	0.9
09145U	0.5
09145V	0.8

ROAD NUMBER	MILES
09145W	2.4
09145X	0.8
09145Y	0.5
09146A	0.3
09146B	1.4
09146C	0.8
09146D	0.6
09146K	0.0
09146L	0.0
09146P	5.4
09146U	0.8
09146V	0.2
09146W	0.3
09146X	0.1
09146Y	0.4
09147A	0.6
09147B	0.2
09147C	0.2
09147D	0.4
09147E	0.4
09147F	0.5
09147G	0.1
09147H	1.4
09147J	0.3
09147K	0.2
09147L	0.3
09147M	1.2
09147N	1.0
09147P	0.7
09147Q	0.4
09147R	1.1
09147S	0.8
09147T	1.0
09147U	0.2
09147V	1.0
09147W	1.0
09147X	0.7
09147Y	1.0
09148A	1.9
09148B	0.5
09148C	0.3
09148D	0.3
09148E	2.2
09148F	0.6
09148G	0.3
09148H	0.3
09148J	0.4
09148K	0.9
09148L	0.9
09148M	0.4
09148N	0.6
09148P	0.7
09148Q	0.5
09148R	1.9

ROAD NUMBER	MILES
09148S	0.4
09148T	0.8
09148U	0.4
09148V	0.8
09148W	0.5
09148X	0.3
09148Y	0.6
09149A	0.3
09149B	0.5
09149C	0.7
09149D	1.0
09149P	0.2
09149Q	0.2
09149R	0.3
09149S	1.3
09149T	0.9
09149U	0.9
09149V	0.4
09149X	0.4
09151E	0.2
09151F	1.7
09151G	1.4
09151J	0.7
09151K	0.3
09151L	0.1
09151M	1.3
09151N	2.1
09151P	0.2
09151Q	2.9
09151R	0.2
09151S	1.5
09151T	0.5
09151U	1.2
09151V	0.1
09151W	0.3
09152Q	0.1
09152R	0.1
09153F	0.7
09153G	0.2
09153H	0.3
09153J	0.3
09153K	0.1
09153L	0.2
09153M	0.1
09153N	0.3
09153P	1.1
09153Q	0.5
09153R	0.2
09153S	0.3
09153T	0.2
09156V	0.2
09156W	1.2
09158M	0.0
09158N	0.4

ROAD NUMBER	MILES
09158P	0.1
09158Q	1.5
09158R	1.0
09158S	0.5
09158T	0.8
09158U	0.2
09158V	3.0
09158W	0.6
09158X	0.9
09159A	0.0
09159F	0.6
09159G	0.2
09159H	0.1
09159J	0.0
09159K	0.8
09159L	0.3
09159N	0.3
09159P	0.4
09159Q	0.0
09159R	0.2
09159S	0.4
09159T	0.6
09159U	0.6
09159V	0.4
09159W	0.2
09159X	0.3
09159Y	0.3
09160B	2.0
09166G	0.7
09166J	0.4
09166K	0.8
09166L	2.8
09166M	0.2
09166N	3.5
09170L	1.4
09171E	0.2
09171F	0.6
09171G	0.7
09171H	0.4
09171J	0.1
09171L	0.3
09171M	0.2
09171N	0.8
09171P	0.2
09171Q	0.9
09171R	0.8
09171S	0.3
09171T	0.7
09171U	0.1
09171V	1.9
09171W	1.7
09171X	0.7
09171Y	0.8
09172B	1.0

ROAD NUMBER	MILES
09172C	0.6
09172D	0.3
09172E	1.1
09172F	1.0
09172G	1.0
09172H	0.7
09172J	0.4
09172K	0.2
09172L	0.2
09172M	0.2
09172N	1.0
09172S	0.5
09172T	0.1
09172U	0.2
09173A	0.5
09173B	1.0
09173D	0.3
09173E	0.3
09173F	0.5
09173G	0.7
09173P	0.5
09173Q	1.0
09173S	0.8
09173T	0.7
09173U	0.7
09173V	0.7
09173W	0.7
09173X	0.6
09173Y	0.2
09180A	0.2
09180B	0.3
09180C	0.3
09180D	1.2
09180E	0.7
09180F	0.2
09180G	0.2
09180H	0.7
09180J	0.2
09180K	0.3
09180L	0.4
09180M	0.3
09180N	0.2
09180P	0.1
09180Q	0.1
09180R	0.2
09180S	1.2
09180T	0.2
09180U	0.3
09180V	0.4
09180W	0.1
09180X	3.1
09180Y	0.7
09180Z	1.4
09181A	1.1

ROAD NUMBER	MILES
09181B	0.9
09181C	0.5
09181D	0.4
09181E	0.1
09181F	0.3
09181G	0.7
09214A	0.6
09215A	0.2
09215B	1.0
09215C	1.2
09215D	0.3
09215E	0.5
09215F	1.8
09215G	0.3
09215H	0.3
09215J	0.8
09215K	0.4
09215L	0.8
09215M	0.7
09215N	0.2
09215P	0.2
09215Q	0.3
09215R	0.3
09215S	1.7
09215T	0.3
09215U	0.4
09215V	0.1
09215W	1.2
09215X	0.4
09216A	0.5
09216B	0.3
09216C	0.2
09216D	0.6
09216E	0.5
09216F	0.5
09216G	1.0
09216H	0.3
09216K	0.3
09216L	0.1
09216M	0.6
09216P	0.2
09216Q	0.6
09216R	1.0
09216S	1.2
09216T	0.2
09216U	0.5
09216V	1.8
09216W	0.4
09216X	0.3
09216Y	0.5
09217A	0.3
09217B	0.4
09217D	0.8
09217E	0.8

ROAD NUMBER	MILES
09217F	0.8
09217G	1.0
09217H	0.4
09217J	0.4
09217L	0.8
09217M	0.2
09217N	2.2
09217P	0.8
09217Q	0.6
09217R	0.6
09217S	0.6
09217T	1.2
09217U	0.2
09217V	0.6
09217W	1.3
09217X	0.4
09217Y	1.1
09218A	0.3
09218B	0.3
09218C	0.7
09218D	0.9
09218E	1.0
09218F	1.1
09218G	0.7
09218J	0.2
09218K	0.4
09218L	0.2
09218M	0.5
09218N	0.9
09218P	0.6
09218Q	0.3
09218R	0.6
09218S	0.4
09218T	0.5
09218U	0.4
09218V	0.6
09218X	0.2
09218Y	0.2
09219A	0.9
09219B	0.2
09219C	0.3
09219D	0.9
09219E	0.4
09219F	0.4
09219J	2.0
09219K	0.3
09219L	1.2
09219M	0.9
09219N	0.7
09219P	0.9
09219R	0.4
09219S	0.3
09219T	0.3
09219U	1.0

ROAD NUMBER	MILES
09219V	1.1
09219X	0.7
09219Y	0.3
09220H	0.2
09220K	0.2
09220N	0.5
09220P	1.3
09220Q	0.5
09220R	0.2
09220T	0.2
09220U	0.4
09220V	0.1
09220W	1.0
09220X	1.9
09220Y	2.5
09221M	0.1
09221N	0.3
09221P	0.5
09222B	0.3
09222C	0.1
09222D	1.1
09222F	0.3
09222L	1.7
09222Q	0.2
09222R	0.2
09222S	0.1
09222T	0.3
09222U	0.5
09222V	0.5
09222W	0.0
09222X	0.5
09223A	0.1
09223C	0.7
09223L	0.1
09223Q	0.2
09223R	0.2
09223S	0.1
09223U	0.2
09223V	0.3
09224A	0.2
09224B	0.1
09224C	0.2
09224D	0.2
09224E	1.0
09224F	0.4
09224G	0.4
09224H	0.8
09224J	0.5
09224K	0.1
09224L	0.3
09224M	0.3
09224N	0.4
09224P	0.1
09224Q	0.1

ROAD NUMBER	MILES
09224R	0.6
09224S	0.2
09224T	0.6
09224U	0.4
09224V	0.6
09224W	0.3
09224X	0.6
09225K	0.4
09225V	0.6
09225W	0.4
09226B	0.5
09226C	1.2
09226D	0.3
09226E	0.1
09226F	0.0
09226T	0.1
09226U	1.1
09226V	0.2
09226W	0.7
09226X	0.4
09226Y	0.5
09227A	0.3
09227B	0.1
09227C	0.2
09227D	0.4
09227E	0.2
09227F	0.4
09227G	0.2
09227H	0.3
09227J	1.1
09227K	0.2
09227L	1.4
09227M	0.6
09227N	0.4
09227P	0.5
09227Q	0.2
09227R	0.3
09227S	0.3
09227T	0.2
09227U	0.2
09227V	0.7
09227W	0.2
09227X	0.4
09227Y	0.2
09228A	0.8
09228B	0.2
09228C	0.3
09228D	0.2
09228E	0.5
09228F	1.7
09228G	0.8
09228H	0.4
09228J	0.6
09228K	0.1

ROAD NUMBER	MILES
09228L	0.5
09228M	0.4
09228N	0.1
09228P	0.1
09228Q	0.5
09228R	0.8
09228S	0.2
09228T	0.8
09228U	0.2
09228V	0.5
09228W	0.4
09228X	0.3
09228Y	0.2
09229A	1.0
09229B	0.3
09229C	1.5
09229D	0.4
09229E	0.7
09229F	0.2
09229G	0.1
09229H	0.1
09229J	0.2
09229K	0.6
09229L	0.8
09229M	0.3
09229N	0.2
09229P	0.2
09229Q	0.3
09229R	0.2
09229S	0.3
09229T	1.6
09229U	0.3
09229V	0.3
09229W	0.1
09229X	0.3
09229Y	0.1
09230A	0.2
09230B	0.3
09230C	0.7
09230D	0.5
09230E	0.2
09230F	0.7
09230G	0.1
09230H	0.1
09230J	0.2
09230K	0.2
09230L	0.3
09230M	0.2
09230N	0.7
09230P	0.7
09230Q	0.3
09230R	1.3
09230S	0.3
09230T	0.7

ROAD NUMBER	MILES
09230U	0.2
09230V	0.1
09230W	0.6
09230X	0.7
09230Y	0.1
09231A	0.4
09231B	0.8
09231C	0.5
09231D	0.2
09231E	0.1
09231F	0.3
09231G	0.2
09231H	0.7
09231J	0.3
09231K	0.1
09231L	0.2
09231M	0.3
09231N	0.4
09231P	0.6
09231Q	3.1
09231R	0.9
09231S	0.5
09231T	0.2
09231U	0.4
09231V	0.6
09231W	0.2
09231X	0.3
09231Y	0.1
09232B	0.5
09232C	0.2
09232D	0.3
09232E	0.2
09232F	0.2
09232G	0.1
09232H	0.1
09232J	0.6
09232K	0.5
09232L	0.2
09232M	0.1
09232N	0.5
09232P	0.3
09232Q	0.4
09232R	1.8
09232S	0.3
09232T	0.7
09232U	0.5
09232V	0.3
09232W	0.5
09232X	0.2
09232Y	0.2
09233A	1.0
09233B	0.7
09233C	0.4
09233D	0.9

ROAD NUMBER	MILES
09233E	0.2
09233F	0.4
09233G	0.2
09233H	0.2
09233J	0.2
09233K	0.6
09233L	0.1
09233M	0.7
09233N	0.2
09233P	0.5
09233Q	2.0
09233R	1.1
09233S	1.3
09233T	1.1
09233U	0.3
09233V	0.2
09233X	0.3
09233Y	0.2
09234A	0.6
09234B	0.6
09234C	0.2
09234D	0.3
09234E	0.1
09234F	0.1
09234G	0.4
09234H	0.2
09234J	0.6
09234K	0.4
09234L	0.5
09234M	0.5
09234N	1.5
09234P	1.9
09234Q	0.3
09234R	0.8
09234S	2.7
09234T	0.5
09234U	0.4
09234V	0.3
09234W	0.9
09234X	0.5
09234Y	0.6
09236A	0.2
09236B	0.5
09237A	0.6
09237B	0.2
09237C	0.5
09237D	0.4
09237E	0.3
09237F	0.2
09237G	0.3
09237H	0.3
09237J	0.3
09237K	0.2
09237L	0.4

ROAD NUMBER	MILES
09237M	1.1
09237N	1.0
09237P	0.6
09237Q	0.3
09237R	0.5
09237S	1.0
09237T	0.6
09237U	0.4
09237V	0.7
09237W	0.3
09237X	0.6
09237Y	0.3
09238A	0.4
09238R	0.2
09238W	0.2
09240C	0.0
09240H	0.1
09253N	0.1
09253Q	0.3
09255S	0.4
09256E	0.8
09257D	0.4
09257P	0.1
09257R	0.5
09257U	1.2
09257X	0.1
09257Y	0.1
09258B	0.3
09258C	0.5
09258D	0.4
09258E	0.2
09258F	0.3
09351L	0.3
09354M	1.1
09359F	1.5
09361B	2.5
09362E	0.3
09362R	0.2
09363B	0.9
09364Y	0.0
09410B	0.9
09410C	1.1
09410D	0.5
09410E	0.2
09410F	0.2
09410G	0.4
09410H	0.1
09410J	0.3
09410K	0.4
09410L	1.1
09410M	0.3
09410N	0.1
09410P	0.7
09410Q	0.7

ROAD NUMBER	MILES
09410R	0.5
09410S	0.4
09410T	0.3
09410U	1.5
09410V	0.7
09410W	1.1
09410X	1.8
09410Y	0.2
09411A	0.3
09411B	0.5
09411C	0.1
09411D	0.8
09411E	0.1
09411F	0.3
09411G	0.4
09411H	0.9
09411J	0.3
09411K	0.3
09411L	0.3
09411M	0.4
09411N	0.5
09411P	0.7
09411Q	0.7
09411R	0.6
09411S	1.2
09411T	0.7
09411U	0.6
09411V	0.4
09411W	0.5
09411X	0.3
09411Y	0.7
09412A	0.3
09412B	0.3
09412C	0.3
09412D	1.8
09412E	0.4
09412F	0.6
09412G	0.9
09412H	0.6
09412J	0.7
09413L	0.2
09413T	0.1
09413U	0.2
09413X	0.8
09414N	0.3
09414S	0.3
09414W	0.2
09415A	0.1
09415B	0.2
09415J	1.6
09415K	0.1
09415V	0.7
09415W	0.5
09416Q	0.2

ROAD NUMBER	MILES
09416S	0.2
09417N	0.2
09417P	0.2
09419B	0.1
09419C	0.6
09419E	0.3
09419F	1.5
09419G	0.2
09419M	1.3
09419N	0.6
09419P	0.8
09419Q	0.2
09419R	0.9
09419S	0.8
09419T	0.5
09419U	2.1
09419V	0.7
09419W	0.5
09419X	0.9
09419Y	0.3
09420A	1.3
09420B	0.1
09420C	0.1
09420D	0.3
09420E	1.6
09420F	1.2
09420G	0.3
09420J	0.4
09420L	0.3
09420M	0.2
09420N	1.3
09420P	0.9
09420Q	0.2
09420R	0.3
09420T	0.5
09420U	0.2
09420V	0.3
09420W	1.2
09420X	0.6
09420Y	0.9
09421B	0.3
09421C	1.2
09421D	0.7
09421E	0.3
09421F	0.2
09421G	0.0
09421K	0.4
09421L	0.9
09421M	0.7
09421N	0.6
09421P	0.2
09421Q	0.1
09421T	0.1
09421U	3.0

ROAD NUMBER	MILES
09421V	0.8
09421W	0.7
09421X	0.5
09421Y	0.4
09423A	0.3
09423B	0.5
09423C	0.6
09423E	0.2
09423F	0.6
09423G	0.4
09423T	0.9
09423U	0.2
09423V	1.2
09423W	0.1
09426G	0.3
09453A	0.6
09453G	1.0
09455A	0.5
09455B	1.0
09455C	0.1
09455E	1.5
09456A	0.3
09456E	0.5
09456F	1.6
09456G	0.1
09456N	1.1
09456P	0.8
09456Q	0.2
09456R	0.1
09456S	0.5
09456V	1.5
09456W	0.3
09456X	1.1
09456Y	0.3
09457A	0.4
09457B	0.7
09457C	0.2
09457D	0.2
09457E	0.1
09457F	0.6
09457G	0.3
09457H	0.1
09457J	0.0
09457K	0.2
09457S	1.0
09457V	0.7
09457X	0.6
09457Y	0.3
09458B	1.0
09458C	0.2
09458D	0.3
09458E	0.2
09458F	0.2
09458H	1.0

ROAD NUMBER	MILES
09458K	0.2
09458L	2.4
09458M	1.4
09458P	0.3
09458Q	0.7
09458S	0.5
09458U	0.5
09458V	0.6
09458W	0.2
09458X	0.2
09458Y	0.1
09459A	0.3
09459C	0.8
09459D	0.2
09459E	0.9
09459F	1.2
09459G	1.3
09459H	0.4
09459J	0.6
09459L	0.3
09459M	1.7
09459P	1.0
09459Q	0.2
09459S	1.1
09459T	0.3
09459U	0.3
09459Y	0.3
09460A	0.4
09460B	1.4
09460C	0.5
09460E	0.5
09460F	0.8
09460G	2.2
09460H	0.4
09460J	2.8
09460K	0.3
09460L	0.1
09460M	1.1
09460N	0.1
09460P	0.2
09460Q	0.4
09460R	0.2
09460S	1.0
09460T	0.9
09460V	0.2
09460X	0.2
09461B	0.7
09461D	1.4
09461E	0.2
09461F	0.3
09461G	0.1
09461H	0.3
09461J	0.6
09461K	0.4

ROAD NUMBER	MILES
09461L	0.8
09461M	0.4
09461N	1.9
09461P	0.5
09461Q	0.4
09461R	0.5
09461S	0.6
09461T	0.3
09461U	0.2
09461W	0.2
09462A	0.6
09462D	0.3
09462E	1.2
09462G	1.4
09462H	0.2
09462K	0.9
09462L	1.8
09462M	1.0
09462P	1.0
09462Q	0.1
09462R	0.2
09462S	0.6
09462U	0.8
09462V	1.5
09462X	1.3
09463A	0.3
09463B	0.3
09463C	0.3
09463E	0.8
09463F	1.6
09463G	0.5
09463J	0.2
09463L	0.1
09463M	0.4
09463N	0.8
09463P	0.1
09463Q	0.6
09463R	1.2
09463S	0.2
09463T	0.2
09463U	0.3
09463V	0.3
09463W	0.3
09463X	1.6
09463Y	1.7
09464A	0.5
09464B	0.2
09464C	0.6
09464D	1.4
09464E	0.3
09464F	0.2
09464G	0.4
09464H	0.6
09464J	1.8

ROAD NUMBER	MILES
09464K	0.2
09464L	0.9
09464M	0.4
09464N	0.4
09464P	0.3
09464Q	0.2
09464R	0.5
09464S	0.7
09464T	0.3
09464U	0.2
09464V	0.4
09464W	0.1
09464Y	1.2
09465A	0.3
09465B	0.2
09465C	0.3
09465D	0.2
09465E	0.3
09465F	1.0
09465G	0.6
09465H	1.4
09465J	0.2
09465K	0.2
09465L	0.0
09465M	0.7
09465N	1.4
09465P	0.4
09465Q	0.4
09465R	0.1
09465T	1.3
09465U	0.9
09465V	0.2
09465W	0.2
09465X	0.3
09465Y	0.4
09466A	0.4
09466B	0.2
09466C	0.8
09466D	0.4
09466E	0.2
09466F	0.2
09466G	0.2
09466H	0.4
09466K	0.1
09466L	0.7
09466M	0.4
09466N	0.4
09466P	0.3
09466Q	0.1
09466S	1.9
09466W	0.2
09466X	3.7
09466Y	0.3
09467A	0.4

ROAD NUMBER	MILES
09467B	0.3
09467C	1.1
09467D	0.2
09467E	0.4
09467F	0.4
09467G	0.1
09467H	0.5
09467J	0.2
09467K	0.9
09467L	0.2
09467M	1.2
09467N	0.4
09467P	0.7
09467Q	0.4
09467R	0.7
09467S	0.3
09467T	0.9
09467U	0.4
09467V	1.4
09467W	0.2
09467X	0.7
09467Y	1.5
09468A	0.2
09468C	0.1
09468E	0.2
09468F	0.5
09468G	3.8
09468K	0.6
09468L	0.3
09468M	0.1
09468N	0.4
09468P	0.2
09468Q	0.6
09468R	0.5
09468S	1.8
09468T	0.3
09468U	0.2
09468X	0.2
09468Y	0.7
09469A	0.2
09469B	1.9
09469C	0.1
09469D	1.0
09469E	0.2
09469F	0.4
09469H	0.2
09469J	0.1
09469K	0.8
09469L	0.7
09469M	0.6
09469N	0.9
09469P	0.4
09469Q	0.3
09469R	1.4

ROAD NUMBER	MILES
09469S	1.1
09469U	2.0
09469V	0.9
09469W	0.8
09469X	0.3
09469Y	0.5
09470A	0.1
09470B	0.2
09470C	0.3
09470D	0.2
09470E	0.1
09470G	2.2
09470L	0.5
09470M	1.4
09470N	1.1
09470P	0.2
09470Q	0.6
09470R	0.5
09470S	0.5
09470T	0.4
09470U	1.0
09470V	0.3
09470W	0.3
09470X	0.4
09470Y	1.0
09471A	0.4
09471B	0.3
09471C	0.3
09471D	0.3
09471E	1.4
09471F	0.3
09471M	0.8
09471N	0.5
09471P	1.5
09471Q	0.2
09471T	0.3
09471U	0.2
09471V	1.2
09471W	0.4
09471X	0.4
09471Y	0.2
09472A	0.2
09472B	0.8
09472C	0.1
09472D	0.5
09472E	0.3
09472F	0.6
09472G	2.2
09472H	1.0
09472J	0.3
09472K	0.6
09472L	0.5
09472M	0.1
09472N	1.2

ROAD NUMBER	MILES
09472Q	0.4
09472R	1.3
09472S	0.9
09472T	0.3
09472U	0.7
09472V	0.7
09472X	0.7
09472Y	1.0
09473B	1.0
09473C	1.7
09473D	0.6
09473E	0.4
09473F	0.2
09473G	0.3
09473H	0.5
09473J	0.6
09473K	0.6
09473L	1.0
09473N	1.5
09473P	0.2
09473T	0.3
09473U	0.4
09473X	1.0
09473Y	0.5
09474A	0.1
09474B	0.2
09474C	1.1
09474D	0.4
09474E	0.3
09474F	0.2
09474G	0.3
09474H	0.3
09474R	0.2
09474S	0.4
09474T	1.0
09474U	0.7
09474V	0.3
09474W	1.0
09474X	0.1
09474Y	0.8
09475P	0.4
09475U	0.2
09475V	0.2
09475W	0.2
09475X	0.6
09475Y	1.1
09476E	0.1
09477A	0.6
09477B	0.5
09477C	0.1
09477E	1.1
09477F	0.7
09477G	1.5
09477H	1.0

ROAD NUMBER	MILES
09478A	0.6
09478B	0.6
09478C	1.0
09478D	0.3
09478E	0.9
09478F	1.2
09478G	0.3
09478H	0.4
09478J	0.5
09478K	1.6
09478L	0.2
09478M	0.7
09478N	0.1
09478P	0.3
09478Q	0.8
09478R	0.1
09478S	0.4
09478T	0.7
09478U	0.2
09478V	2.1
09478W	0.7
09478X	0.3
09478Y	0.9
09479B	0.3
09479K	0.0
09479L	0.1
09479M	0.7
09479N	0.5
09479P	0.3
09479Q	0.2
09479S	0.6
09479T	2.3
09479U	0.7
09479W	0.4
09479X	0.2
09479Y	0.3
09480A	0.3
09480B	0.1
09481D	0.5
09481K	1.0
09481L	2.8
09481M	1.4
09481N	0.6
09481P	0.5
09481Q	1.8
09481R	0.5
09482E	1.5
09482F	0.4
09482K	0.1
09482L	1.1
09482Q	1.2
09482U	0.4
09482V	1.0
09482W	0.1

ROAD NUMBER	MILES
09483F	1.1
09483J	2.4
09483L	1.3
09483P	1.2
09483W	0.7
09484H	3.2
09484J	1.1
09484P	0.5
09484T	0.6
09484W	0.5
09485C	0.9
09485H	0.3
09485J	0.6
09485K	0.7
09485L	2.7
09485M	1.5
09485P	0.6
09485W	0.4
09486C	1.4
09486H	1.3
09486J	1.9
09486L	1.8
09486M	2.7
09486Q	1.4
09486R	0.6
09486W	1.1
09486X	1.2
09487B	0.2
09487K	1.0
09487M	0.2
09487P	1.3
09487Q	0.4
09487R	0.4
09487T	0.2
09487U	0.1
09487W	1.2
09487X	1.8
09487Y	1.3
09488C	1.8
09488E	0.5
09488H	0.1
09488J	0.1
09488K	1.3
09488L	1.4
09488M	0.7
09488P	1.3
09488W	1.7
09488X	2.3
09488Y	3.1
09489C	0.2
09489D	0.2
09489E	0.1
09489J	0.8
09489K	1.6

ROAD NUMBER	MILES
09489N	0.3
09489P	3.1
09489Q	0.5
09489U	0.9
09489W	3.3
09489X	1.3
09491A	0.6
09491B	0.2
09491D	2.4
09491J	0.4
09491L	0.6
09492A	0.3
09492C	1.5
09492D	2.3
09492H	1.1
09493A	0.5
09493B	0.8
09493C	1.5
09493M	0.8
09493N	0.6
09494F	0.6
09494G	0.2
09494H	0.7
09495A	1.4
09495B	0.6
09495C	1.0
09495D	1.5
09495G	2.0
09495H	1.4
09496B	1.3
09496G	0.8
09496H	0.3
09497A	0.5
09497B	1.2
09497H	0.4
09497J	2.0
09498A	2.0
09498B	0.4
09498C	1.0
09498F	0.2
09499A	1.0
09499B	0.3
09499C	2.4
09499D	1.3
09499E	0.8
09499F	0.9
09499G	0.1
09715A	0.3
09716A	0.7
09716B	1.2
09716C	0.1
09717X	0.4
09717Y	1.1
09723A	0.5

ROAD NUMBER	MILES
09724A	1.6
09725A	1.4
09725H	0.6
09728A	1.1

APPENDIX D Road Rights-of-Way

Road Number	R-O-W Grantee	Miles	Forest
128	Coconino County	6.8	Coconino
132	Coconino County	19.1	Coconino
240	Coconino County	11.6	Coconino
556	Coconino County	4.7	Coconino
557	Coconino County	6.8	Coconino
649	Coconino County	7.7	Coconino
667	Coconino County	0.6	Coconino
6010	Coconino County	3.0	Coconino
00003E	Coconino County	4.1	Coconino
00237A	Coconino County	3.0	Coconino
00518C	Coconino County	2.9	Coconino
09002V	Coconino County	3.6	Coconino
COC-3	Coconino County	29.1	Coconino
COC-90	Coconino County	5.5	Coconino
16	Coconino County	2.9	Kaibab
62	Coconino County	7.3	Kaibab
74	Coconino County	7.5	Kaibab
75	Coconino County	3.8	Kaibab
100	Coconino County	6.6	Kaibab
102	Coconino County	5.4	Kaibab
107	Coconino County	6.4	Kaibab
124	Coconino County	3.1	Kaibab
140	Coconino County	6.6	Kaibab
141	Coconino County	38.7	Kaibab
781	Coconino County	4.4	Kaibab
9196	Coconino County	3.6	Kaibab
68	State AZ	1.8	Coconino
75	State AZ	2.6	Coconino
231	Cecil Miller, et al	0.8	Coconino
231	Frances McAllister	0.2	Coconino
231	Private	0.0	Coconino
231	State Az	6.7	Coconino
240	Coconino County	1.9	Coconino
301	State AZ	2.1	Coconino
303	Az State Land	0.3	Coconino
303	State Az	0.6	Coconino
420	City of Flagstaff	0.4	Coconino
420	Purcell	0.1	Coconino
420	Stilley	0.0	Coconino
420	USA	0.2	Coconino
506	State Az	1.2	Coconino
506	USA	0.3	Coconino
515	State Az	2.0	Coconino
516	State AZ	0.2	Coconino
526	State AZ	1.2	Coconino
527	State AZ	3.3	Coconino
530	State AZ	4.0	Coconino
532	LEX with Transamerica Title Ins Co	1.9	Coconino
533	State AZ	2.5	Coconino
535	State AZ	2.5	Coconino
538	State AZ	1.4	Coconino
557	City of Flagstaff	0.1	Coconino

Road Number	R-O-W Grantee	Miles	Forest
557	Levitan	0.1	Coconino
557	Mccullough	0.0	Coconino
557	Gordon, Lewis, Linton, Parfitt, Dosch, Tomitz	0.4	Coconino
557	Shattuck	0.1	Coconino
557	USA (Thru BLM)	0.4	Coconino
557	Wilson	0.1	Coconino
791	State Az	0.4	Coconino
861	State Az	1.0	Coconino
871	State Az	1.3	Coconino
6330	State Az	0.7	Coconino
9024	State Az	1.3	Coconino
00075A	State Az	0.3	Coconino
00075B	State Az	0.3	Coconino
00231D	State Az	1.8	Coconino
00231H	State Az	0.6	Coconino
00231K	State AZ	0.2	Coconino
00231L	State AZ	0.9	Coconino
00301A	TransAmerica Title Insurance Co	1.6	Coconino
00301B	State Az	0.6	Coconino
00301D	State Az	1.2	Coconino
00301F	TransAmerica Title Insurance Co	0.7	Coconino
00301F	State Az	0.7	Coconino
00510F	Az Title	0.2	Coconino
00510F	State Az	1.1	Coconino
00510G	State Az	0.2	Coconino
00515A	State Az	1.8	Coconino
00515C	State Az	0.8	Coconino
00526B	State Az	1.2	Coconino
00526D	State Az	1.9	Coconino
00527A	State Az	0.0	Coconino
00530A	State Az	2.1	Coconino
00530C	State Az	0.1	Coconino
00533B	State Az	1.4	Coconino
00535B	State Az	0.6	Coconino
00535C	State Az	1.1	Coconino
00535D	State Az	1.3	Coconino
00538F	State Az	0.1	Coconino
00538J	State Az	0.2	Coconino
00538L	State Az	0.4	Coconino
09133C	State Az	1.2	Coconino
09225K	State Az	0.6	Coconino
09420W	State Az	0.6	Coconino
105	USA	0.4	Kaibab
106	USA	0.2	Kaibab
107	USA	0.1	Kaibab
108	USA	0.0	Kaibab
110	USA	0.1	Kaibab
124		0.1	Kaibab
124	City of Williams	1.5	Kaibab
127	USA	0.5	Kaibab
140	USA	0.8	Kaibab
141	ADOT	0.1	Kaibab
141	Coconino County	1.1	Kaibab
141	Mason	0.2	Kaibab

Road Number	R-O-W Grantee	Miles	Forest
141	USA	0.4	Kaibab
144		0.5	Kaibab
302	USA	0.5	Kaibab
527	Coconino County	1.0	Kaibab
744	USA	0.0	Kaibab
793	USA	0.6	Kaibab
796	El Paso Gass Line	16.4	Kaibab
798	USA	0.2	Kaibab
812	USA	0.1	Kaibab
999	Co Bar Livestock-Babbit Ranch-NAU	0.3	Kaibab
1742	USA	0.1	Kaibab
4TH STREET	City Ordiance	0.6	Kaibab
COC-73	AT and SF RR/Public	0.5	Kaibab
COC-73	Benham	0.4	Kaibab
COC-73	Shelly	1.2	Kaibab
PRIV-78	USA	0.2	Kaibab

REFERENCES

- Gucinski, Hermann; Furniss, Michael J.; Ziemer, Robert R.; Brookes, Martha H. 2000. Forest roads: a synthesis of scientific information. Gen. Tech. Rep. PNWGTR-509. Portland, OR: U.S. Department of Agriculture, Forest Service, Pacific Northwest Research Station. 103 p.
- USDA Forest Service. 2012. Field Review of 4FRI Temporary Roads and Road Systems-4FRI First EIS Area. 9p. unpublished, internal document.
- _____. 2010. Travel Analysis Process Report Coconino National Forest. Southwestern Region. 20p available online at: <http://www.redrockcountry.org/about-us/tmr/tmr-documents/tap-cnf-2009-03-12.pdf>
- _____. 2010a. Travel Analysis Process Report, Kaibab National Forest Williams RD. Southwestern Region 68p
- _____. 2008. Travel Analysis Report for the Tusayan Ranger District, Kaibab National Forest. Southwestern Region. 136p.
- _____. 2011. Decision Notice (DN) and Finding of No Significant Impact (FONSI) for the Tusayan Ranger District Travel Management Project. Kaibab National Forest. 22p.
- _____. 2010b. Decision Notice (DN) and Finding of No Significant Impact (FONSI) for the Williams Ranger District Travel Management Project. Kaibab National Forest. 21p.
- _____. 2011a. Record of Decision Travel Management Plan Coconino National Forest. 76p.
- _____. 1995. Chapter 10 FSH 7709.58 - TRANSPORTATION SYSTEM MAINTENANCE HANDBOOK Amendment No. 7709.58-95-1 Effective July 28, 1995 19p