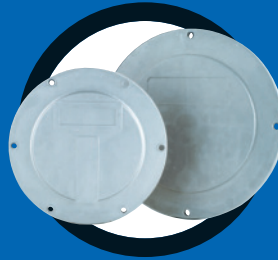


FILTRATION

PRESSURE FILTERS.....521
 RETURN FILTERS.....525
 TANK TOP RETURN FILTERS527
 SUCTION FILTERS.....529
 SUCTION STRAINERS530
 DIFFUSERS531
 FILLER BREATHERS531

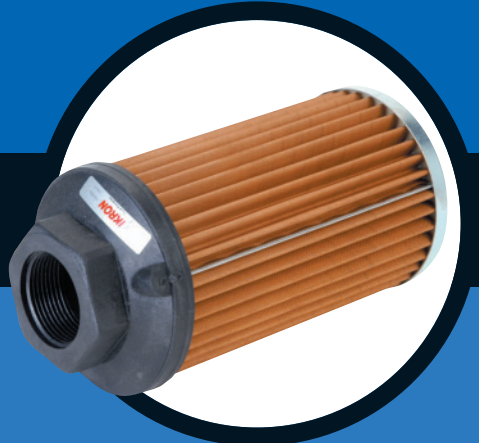
LEVEL INDICATORS535
 ELECTRIC LEVEL INDICATORS536
 ELECTRIC FLOATING LEVEL GAUGES.....536
 OIL LEVEL GAUGES539
 FILTREC SIMPLEX AND DUPLEX INDUSTRIAL FILTERS.....540
 SIGHT GLASSES, PLUGS AND BREATHERS.....541





PUSH IN FILLER BREATHER.....534
 SPIN-ON AIR BREATHER.....534
 AIR BREATHERS.....534
 PLASTIC HYDRAULIC THREADED AIR BREATHERS.....534
 STEEL HYDRAULIC THREADED AIR BREATHERS.....534
 LEVEL INDICATORS.....535

ELECTRIC TYPE LEVEL INDICATORS.....535
 ELECTRIC LEVEL INDICATORS.....535
 SIMPLEX AND DUPLEX INDUSTRIAL FILTERS.....540
 SIGHT GLASSES.....541
 PLUGS.....541
 BREATHERS.....541



PRESSURE FILTERS



UP TO
25
BAR

IN LINE LOW PRESSURE FILTER HF625 SERIES

These filters are designed to be connected to any low pressure line up to 25bar of any hydraulic circuit.

ALUMINIUM HEAD • STEEL BOWL • BUNA SEALS • C/W VISUAL INDICATOR • FLOW RATING UP TO 85 L/MIN
MAX WORKING PRESSURE 25 BAR • TESTING PRESSURE 50 BAR • BURST PRESSURE 75 BAR
OPERATING TEMPERATURE WITH BUNA SEALS -30 +90(C) WITH VITON SEALS -20 +110(C)

	ORDER CODE	PORTS	FLOW	PRICE	ELEMENT	PRICE
10 MICRON FIBREGLASS						
HF625.20.135-AS-FG010-B17-GE-B-XA-FP-D	HHE46540	3/4"	40	£179.70	HHC02800	£124.97
HF625-20.180-AS-FG010-B17-GE-B-XA-FP-D	HHE46655	3/4"	50	£203.98	HHC02905	£152.47
10 MICRON CELLULOSE						
HF625-20.135-AS-SP010-B17-GE-B-XA-FP-D	HHE46455	3/4"	50	£111.75	HHC02875	£48.94
HF625-20.180-AS-SP010-B17-GE-B-XA-FP-D	HHE46575	3/4"	60	£115.18	HHC02980	£60.21
25 MICRON FIBREGLASS						
HF625.20.135-AS-FG025-B17-GE-B-XA-FP-D	HHE46553	3/4"	40	£168.42	HHC02815	£112.07
HF625-20.180-AS-FG025-B17-GE-B-XA-FP-D	HHE46675	3/4"	50	£190.77	HHC02920	£137.48
25 MICRON CELLULOSE						
HF625.20.135-AS-SP025-B17-GE-B-XA-FP-D	HHE46475	3/4"	60	£111.75	HHC02890	£56.94
HF625-20.180-AS-SP025-B17-GE-B-XA-FP-D	HHE46595	3/4"	70	£114.58	HHC02995	£61.52



UP TO
35
BAR

INDICATORS NOT
AVAILABLE AS
SPARES

IN LINE MEDIUM PRESSURE FILTER HF650 SERIES

The filter HF650 is suitable for working pressure up to 35 bar.

ALUMINIUM HEAD • STEEL BOWL • BUNA SEALS • C/W VISUAL INDICATOR • FLOW RATING UP TO 140 L/MIN
MAX WORKING PRESSURE 35 BAR • TESTING PRESSURE 70 BAR • BURST PRESSURE 105 BAR
OPERATING TEMPERATURE WITH BUNA SEALS -30 +90(C) WITH VITON SEALS -20 +110(C)

	ORDER CODE	PORTS	FLOW	PRICE	ELEMENT	PRICE
3 MICRON FIBREGLASS						
HF650-20.140-AS-FG003-B17-GE-B-XA-F	HHE73005	3/4"	50	£280.47	HHC02701	£120.80
HF650-20.140-AS-FG003-B17-GF-B-XA-F	HHE73010	1"	70	£280.47	HHC02701	£120.80
HF650-20.180-AS-FG003-B17-GE-B-XA-F	HHE70190	3/4"	85	£316.89	HHC02725	£160.60
HF650-20.180-AS-FG003-B17-GF-B-XA-F	HHE70195	1"	95	£316.89	HHC02725	£160.95
HF650-20.230-AS-FG003-B17-GE-B-XA-F	HHE78490	3/4"	100	£308.75	HHC02751	£169.20
HF650-20.230-AS-FG003-B17-GF-B-XA-F	HHE78500	1"	110	£334.66	HHC02751	£169.20
6 MICRON FIBREGLASS						
HF650-20.140-AS-FG006-B17-GE-B-XA-F	HHE72300	3/4"	60	£280.47	HHC02702	£120.80
HF650-20.140-AS-FG006-B17-GF-B-XA-F	HHE72320	1"	80	£280.47	HHC02702	£120.80
HF650-20.180-AS-FG006-B17-GE-B-XA-F	HHE70800	3/4"	95	£316.89	HHC02730	£160.60
HF650-20.180-AS-FG006-B17-GF-B-XA-F	HHE70815	1"	105	£316.89	HHC02730	£160.60
HF650-20.230-AS-FG006-B17-GE-B-XA-F	HHE79080	3/4"	110	£310.37	HHC02752	£157.79
HF650-20.230-AS-FG006-B17-GF-B-XA-F	HHE79100	1"	120	£324.77	HHC02752	£157.79
10 MICRON FIBREGLASS						
HF650-20.140-AS-FG010-B17-GE-B-XA-F	HHE72409	3/4"	70	£258.92	HHC02703	£97.42
HF650-20.140-AS-FG010-B17-GF-B-XA-F	HHE72560	1"	90	£258.92	HHC02703	£97.42
HF650-20.180-AS-FG010-B17-GE-B-XA-F	HHE75802	3/4"	100	£292.76	HHC02727	£134.33
HF650-20.180-AS-FG010-B17-GF-B-XA-F	HHE70303	1"	110	£292.76	HHC02727	£134.33
HF650-20.230-AS-FG010-B17-GE-B-XA-F	HHE82010	3/4"	120	£299.34	HHC02753	£145.01
HF650-20.230-AS-FG010-B17-GF-B-XA-F	HHE79820	1"	130	£299.34	HHC02753	£145.01
16 MICRON FIBREGLASS						
HF650-20.140-AS-FG016-B17-GE-B-XA-F	HHE73035	3/4"	75	£256.62	HHC02704	£94.92
HF650-20.140-AS-FG016-B17-GF-B-XA-F	HHE73036	1"	95	£256.62	HHC02704	£94.92
HF650-20.180-AS-FG016-B17-GE-B-XA-F	HHE76650	3/4"	105	£262.12	HHC02728	£100.91
HF650-20.180-AS-FG016-B17-GF-B-XA-F	HHE76620	1"	115	£262.12	HHC02728	£100.91
HF650-20.230-AS-FG016-B17-GE-B-XA-F	HHE80010	3/4"	125	£296.70	HHC02754	£141.97
HF650-20.230-AS-FG016-B17-GF-B-XA-F	HHE80020	1"	135	£296.70	HHC02754	£141.97
25 MICRON FIBREGLASS						
HF650-20.140-AS-FG025-B17-GE-B-XA-F	HHE73045	3/4"	80	£251.14	HHC02705	£88.96
HF650-20.140-AS-FG025-B17-GF-B-XA-F	HHE73050	1"	100	£251.14	HHC02705	£88.96
HF650-20.180-AS-FG025-B17-GE-B-XA-F	HHE76650	3/4"	110	£279.33	HHC02729	£119.62
HF650-20.180-AS-FG025-B17-GF-B-XA-F	HHE76755	1"	120	£279.33	HHC02729	£119.62
HF650-20.230-AS-FG025-B17-GE-B-XA-F	HHE80250	3/4"	130	£308.22	HHC02755	£138.61
HF650-20.230-AS-FG025-B17-GF-B-XA-F	HHE81250	1"	140	£308.22	HHC02755	£138.61
10 MICRON REINFORCED CELLULOSE						
HF650-20.140-AS-RP010-B17-GE-B-XA-F	HHE70360	3/4"	65	£225.47	HHC02706	£60.97
HF650-20.140-AS-RP010-B17-GF-B-XA-F	HHE70495	1"	85	£225.47	HHC02706	£60.97
HF650-20.180-AS-RP010-B17-GE-B-XA-F	HHE77341	3/4"	100	£244.51	HHC02731	£81.70
HF650-20.180-AS-RP010-B17-GF-B-XA-F	HHE77345	1"	105	£363.23	HHC02731	£81.70
HF650-20.230-AS-RP010-B17-GE-B-XA-F	HHE81390	3/4"	105	£272.59	HHC02756	£114.17
HF650-20.230-AS-RP010-B17-GF-B-XA-F	HHE81405	1"	110	£272.59	HHC02756	£113.76
25 MICRON REINFORCED CELLULOSE						
HF650-20.140-AS-RP025-B17-GE-B-XA-F	HHE74200	3/4"	80	£225.47	HHC02707	£60.97
HF650-20.140-AS-RP025-B17-GF-B-XA-F	HHE74220	1"	100	£225.47	HHC02707	£60.97
HF650-20.180-AS-RP025-B17-GE-B-XA-F	HHE81551	3/4"	110	£244.51	HHC02732	£81.70

CONTINUED ON NEXT PAGE



IN LINE MEDIUM PRESSURE FILTER HF650 SERIES

	ORDER CODE	PORTS	FLOW	PRICE	ELEMENT	PRICE
25 MICRON REINFORCED CELLULOSE						
HF650-20.180-AS-RP025-B17-GF-B-XA-F	HHE81559	1"	120	£244.51	HHC02732	£81.70
HF650-20.230-AS-RP025-B17-GE-B-XA-F	HHE81490	3/4"	130	£272.59	HHC02757	£114.17
HF650-20.230-AS-RP025-B17-GF-B-XA-F	HHE81500	1"	140	£272.59	HHC02757	£114.17



IN LINE MEDIUM PRESSURE FILTER HF690 SERIES

These in line medium pressure filters are specifically designed to be connected on the pressure line of the hydraulic circuit and provide versatility to safeguard the circuit components from contaminating particles.

ALUMINIUM HEAD • ALUMINIUM BOWL • BUNA SEALS • FLOW RANGE 10-80L/MIN • MAX WORKING PRESSURE 110 BAR
 TESTING PRESSURE 160 BAR • BURST PRESSURE 330 BAR • OPERATING TEMPERATURE WITH BUNA SEALS -20 +80(°C)
 WITH VITON SEALS -20 +110(°C) • WITH FLUID (HH-HL-HM-HR-HV-HG) AND WATER EMULSION (HFAE-HFAS) USE BUNA SEALS, WITH SYNTHETIC FLUID (HS-HFDR-HFDU-HFDS) USE VITON SEALS



UP TO 110 BAR

HHI03070
 H125-116-B50-TF-B-SI
 J' VISUAL DIFFERENTIAL INDICATOR
 £90.10

HHI03075
 H125-117-B50-TF-B-SI
 T' VISUAL ELECTRICAL INDICATOR
 £97.17

	ORDER CODE	PORTS	FLOW	PRICE	ELEMENT	PRICE
3 MICRON FIBREGLASS						
HF690-10.086-AS-FG003-B60-GD-B-XA-J	HHP20025	1/2"	10	£246.05	HHC46010	£57.46
HF690-10.180-AS-FG003-B60-GD-B-XA-J	HHP20520	1/2"	30	£265.27	HHC46050	£68.97
6 MICRON FIBREGLASS						
HF690-10.086-AS-FG006-B60-GD-B-XA-J	HHP20035	1/2"	15	£245.67	HHC46011	£54.98
HF690-10.180-AS-FG006-B60-GD-B-XA-J	HHP20535	1/2"	45	£262.57	HHC46051	£65.97
10 MICRON FIBREGLASS						
HF690-10.086-AS-FG010-B60-GD-B-XA-J	HHP20065	1/2"	25	£236.86	HHC46012	£47.49
HF690-10.180-AS-FG010-B60-GD-B-XA-J	HHP20565	1/2"	60	£254.29	HHC46052	£56.98
10 MICRON REINFORCED CELLULOSE						
HF690-10.086-AS-RP010-B60-GD-B-XA-J	HHP20155	1/2"	30	£216.81	HHC46015	£40.52
HF690-10.180-AS-RP010-B60-GD-B-XA-J	HHP20655	1/2"	65	£233.53	HHC46055	£38.40
25 MICRON FIBREGLASS						
HF690-10.086-AS-FG025-B60-GD-B-XA-J	HHP20099	1/2"	40	£230.00	HHC46013	£39.99
HF690-10.180-AS-FG025-B60-GD-B-XA-J	HHP20599	1/2"	75	£247.38	HHC46053	£47.53
25 MICRON REINFORCED CELLULOSE						
HF690-10.086-AS-RP025-B60-GD-B-XA-J	HHP20185	1/2"	40	£243.76	HHC46016	£54.98
HF690-10.180-AS-RP025-B60-GD-B-XA-J	HHP20685	1/2"	75	£262.57	HHC46056	£65.97
60 MICRON STAINLESS STEEL						
HF690-10.086-AS-MI060-B60-GD-B-XA-J	HHP20200	1/2"	45	£238.00	HHC46014	£48.72
HF690-10.180-AS-MI060-B60-GD-B-XA-J	HHP20621	1/2"	80	£255.69	HHC46054	£58.48



IN LINE MEDIUM PRESSURE FILTER HF745 SERIES

The filter HF745 is suitable for working pressure up to 280 bar.

CAST IRON HEAD • STEEL BOWL • BUNA SEALS • C/W VISUAL INDICATOR • FLOW RATING UP TO 90 L/MIN
 MAX WORKING PRESSURE 280 BAR • TESTING PRESSURE 420 BAR • BURST PRESSURE 560 BAR
 OPERATING TEMPERATURE WITH BUNA SEALS -30 +90(°C) WITH VITON SEALS -20 +110(°C)



UP TO 280 BAR

HHI02030
 H125-111-B50-GD-B-SS
 H' VISUAL DIFFERENTIAL INDICATOR
 £107.76

HHI02050
 H125-112-B50-GD-B-SS
 VISUAL ELECTRICAL DIFFERENTIAL INDICATOR
 £150.17

HHI02065
 H125-113-B50-GD-B-SS
 U' VISUAL DIFFERENTIAL INDICATOR
 £166.07

	ORDER CODE	PORTS	FLOW	PRICE	ELEMENT	PRICE
3 MICRON FIBREGLASS						
HF745-20.080-AS-FG003-LC-B60-GD-B-XA-H-F2	HHP50105	1/2"	25	£332.39	HHC01900	£71.42
HF745-20.106-AS-FG003-LC-B60-GD-B-XA-H-F2	HHP51175	1/2"	30	£353.81	HHC01904	£81.30
HF745-20.203-AS-FG003-LC-B60-GD-B-XA-H-F2	HHP52190	1/2"	50	£422.80	HHC00121	£23.10
HF745-20.080-AS-FG003-LC-B60-GE-B-XA-H-F2	HHP50160	3/4"	25	£332.39	HHC01900	£71.42
HF745-20.106-AS-FG003-LC-B60-GE-B-XA-H-F2	HHP51442	3/4"	30	£348.53	HHC01904	£81.21
HF745-20.203-AS-FG003-LC-B60-GE-B-XA-H-F2	HHP52205	3/4"	55	£422.80	HHC00121	£131.10
6 MICRON FIBREGLASS						
HF745-20.080-AS-FG006-LC-B60-GD-B-XA-H-F2	HHP50225	1/2"	30	£332.39	HHC01901	£71.32
HF745-20.106-AS-FG006-LC-B60-GD-B-XA-H-F2	HHP51215	1/2"	40	£353.81	HHC01905	£80.60
HF745-20.203-AS-FG006-LC-B60-GD-B-XA-H-F2	HHP52270	1/2"	55	£422.48	HHC00122	£131.10
HF745-20.080-AS-FG006-LC-B60-GE-B-XA-H-F2	HHP50672	3/4"	35	£332.39	HHC01901	£71.32
HF745-20.106-AS-FG006-LC-B60-GE-B-XA-H-F2	HHP51390	3/4"	40	£353.81	HHC01905	£80.59
HF745-20.203-AS-FG006-LC-B60-GE-B-XA-H-F2	HHP52283	3/4"	60	£422.80	HHC00122	£131.10
10 MICRON FIBREGLASS						
HF745-20.080-AS-FG010-LC-B60-GD-B-XA-H-F2	HHP50425	1/2"	35	£309.93	HHC01902	£42.25
HF745-20.106-AS-FG010-LC-B60-GD-B-XA-H-F2	HHP51412	1/2"	45	£330.97	HHC01906	£47.09
HF745-20.203-AS-FG010-LC-B60-GD-B-XA-H-F2	HHP52423	1/2"	60	£386.05	HHC01910	£70.28
HF745-20.080-AS-FG010-LC-B60-GE-B-XA-H-F2	HHP50500	3/4"	40	£309.93	HHC01902	£42.25
HF745-20.106-AS-FG010-LC-B60-GE-B-XA-H-F2	HHP51455	3/4"	50	£330.97	HHC01906	£47.09
HF745-20.203-AS-FG010-LC-B60-GE-B-XA-H-F2	HHP52472	3/4"	70	£386.05	HHC01910	£70.05
25 MICRON FIBREGLASS						
HF745-20.080-AS-FG025-LC-B60-GD-B-XA-H-F2	HHP50625	1/2"	45	£336.23	HHC01903	£36.07
HF745-20.106-AS-FG025-LC-B60-GD-B-XA-H-F2	HHP51625	1/2"	60	£320.54	HHC01907	£39.11
HF745-20.203-AS-FG025-LC-B60-GD-B-XA-H-F2	HHP51624	1/2"	80	£368.64	HHC01911	£57.27
HF745-20.080-AS-FG025-LC-B60-GE-B-XA-H-F2	HHP50674	3/4"	50	£336.23	HHC01903	£36.12
HF745-20.106-AS-FG025-LC-B60-GE-B-XA-H-F2	HHP51623	3/4"	70	£320.54	HHC01907	£39.11
HF745-20.203-AS-FG025-LC-B60-GE-B-XA-H-F2	HHP52674	3/4"	90	£368.64	HHC01911	£57.27



IN LINE HIGH PRESSURE MANIFOLD MOUNTED FILTER HF735 SERIES

The filter HF735 is suitable for working pressure up to 320 bar.

CAST IRON HEAD • STEEL BOWL • BUNA SEALS • C/W VISUAL INDICATOR • FLOW RATING UP TO 180 L/MIN
 MAX WORKING PRESSURE 320 BAR • TESTING PRESSURE 480 BAR • BURST PRESSURE 640 BAR
 OPERATING TEMPERATURE WITH BUNA SEALS -30 +90(°C) WITH VITON SEALS -20 +110(°C)



UP TO
320
BAR

HHI02030
 HI25-111-B50-GD-B-SS
 H' VISUAL DIFFERENTIAL
 INDICATOR
 £107.82

HHI02050
 HI25-112-B50-GD-B-SS
 VISUAL ELECTRICAL
 DIFFERENTIAL INDICATOR
 £150.24

HHI02065
 HI25-113-B50-GD-B-SS
 U' VISUAL DIFFERENTIAL
 INDICATOR
 £166.16

	ORDER CODE	FLOW	PRICE	ELEMENT	PRICE
3 MICRON FIBREGLASS					
HF735-20.080-AS-FG003-LC-B60-B-XA-H	HHP40105	25	£320.32	HHC01900	£75.71
HF735-20.106-AS-FG003-LC-B60-B-XA-H	HHP41001	30	£346.98	HHC01904	£86.18
HF735-20.203-AS-FG003-LC-B60-B-XA-H	HHP41805	50	£404.69	HHC01908	£126.60
HF735-30.115-AS-FG003-LC-B60-B-XA-H	HHP45005	50	£487.15	HHC01912	£106.58
HF735-30.223-AS-FG003-LC-B60-B-XA-H	HHP45701	100	£527.34	HHC01916	£146.09
6 MICRON FIBREGLASS					
HF735-20.080-AS-FG006-LC-B60-B-XA-H	HHP40146	30	£320.32	HHC01901	£75.60
HF735-20.106-AS-FG006-LC-B60-B-XA-H	HHP41015	40	£346.98	HHC01905	£85.44
HF735-20.203-AS-FG006-LC-B60-B-XA-H	HHP41825	55	£404.69	HHC01909	£125.95
HF735-30.115-AS-FG006-LC-B60-B-XA-H	HHP45025	60	£483.54	HHC01913	£106.02
HF735-30.223-AS-FG006-LC-B60-B-XA-H	HHP45711	110	£522.65	HHC01917	£145.74
10 MICRON FIBREGLASS					
HF735-20.080-AS-FG010-LC-B60-B-XA-H	HHP40213	35	£297.97	HHC01902	£42.25
HF735-20.106-AS-FG010-LC-B60-B-XA-H	HHP42600	45	£321.49	HHC01906	£47.11
HF735-20.203-AS-FG010-LC-B60-B-XA-H	HHP41881	60	£367.94	HHC01910	£70.05
HF735-30.115-AS-FG010-LC-B60-B-XA-H	HHP45045	80	£472.04	HHC01914	£58.97
HF735-30.223-AS-FG010-LC-B60-B-XA-H	HHP45719	140	£507.03	HHC01918	£81.26
25 MICRON FIBREGLASS					
HF735-20.080-AS-FG025-LC-B60-B-XA-H	HHP40273	45	£291.44	HHC01903	£38.28
HF735-20.106-AS-FG025-LC-B60-B-XA-H	HHP41113	60	£313.68	HHC01907	£41.46
HF735-20.203-AS-FG025-LC-B60-B-XA-H	HHP41879	80	£350.53	HHC01911	£60.71
HF735-30.115-AS-FG025-LC-B60-B-XA-H	HHP45065	100	£461.40	HHC01915	£71.35
HF735-30.223-AS-FG025-LC-B60-B-XA-H	HHP46007	180	£493.99	HHC01919	£72.50



IN LINE HIGH PRESSURE CETOP 3 MOUNTED FILTER HF725 SERIES

The high pressure filter HF725 series are characterised by a direct and Cetop 3 connections, Modular Assembly, Compact Design and Low Weight.

CAST IRON HEAD • STEEL C45 BOWL • BUNA SEALS • C/W VISUAL INDICATOR • FLOW RATING UP TO 40 L/MIN
 MAX WORKING PRESSURE 350 BAR • TESTING PRESSURE 475 BAR • BURST PRESSURE 600 BAR
 OPERATING TEMPERATURE WITH BUNA SEALS -30 +90(°C) WITH VITON SEALS -20 +110(°C)



UP TO
350
BAR

	ORDER CODE	FLOW	PRICE	ELEMENT	PRICE
3 MICRON FIBREGLASS					
HF725-10.100-FG003-HC-B00-B-XD-H-A	HHP39410	15	£553.74	HHC46026	£179.15
6 MICRON FIBREGLASS					
HF725-10.100-FG006-HC-B00-B-XD-H-A	HHP39454	20	£553.74	HHC46028	£179.15
10 MICRON FIBREGLASS					
HF725-10.100-FG010-HC-B00-B-XD-H-A	HHP39500	30	£532.34	HHC46030	£155.79
25 MICRON FIBREGLASS					
HF725-10.100-FG025-HC-B00-B-XD-H-A	HHP39554	40	£507.20	HHC46032	£128.38



IN LINE MINI HIGH PRESSURE FILTER HF705 SERIES

The in line high pressure filter HF705 series are specifically designed to be connected on the pressure line of the hydraulic circuit and provide versatility to safeguard the circuit components from contaminating particles.

ALUMINIUM GALVANISED BODY • SINTERED BRONZE FILTER MEDIA • BUNA SEALS • FLOW RANGE 10-50L/MIN
 MAX WORKING PRESSURE 350 BAR • TESTING PRESSURE 500 BAR • BURST PRESSURE 800 BAR
 OPERATING TEMPERATURE WITH BUNA SEALS -30 +90(°C) WITH VITON SEALS -20 +110(°C)



UP TO
350
BAR

	ORDER CODE	PORTS	FLOW	PRICE	ELEMENT	PRICE
10 MICRON SINTERED BRONZE						
HF705-10.040-T-SB010-GB-B	HHQ00023	1/4"	15	£88.86	HHC03050	£39.60
HF705-10.040-T-SB010-GC-B	HHQ00020	3/8"	20	£88.86	HHC03050	£39.60
HF705-10.040-T-SB010-GD-B	HHQ00046	1/2"	25	£88.86	HHC03050	£39.60
25 MICRON SINTERED BRONZE						
HF705-10.040-T-SB025-GB-B	HHQ00031	1/4"	25	£88.86	HHC03051	£39.60
HF705-10.040-T-SB025-GC-B	HHQ00035	3/8"	30	£88.86	HHC03051	£39.60
HF705-10.040-T-SB025-GD-B	HHQ00039	1/2"	35	£88.86	HHC03051	£39.60
40 MICRON SINTERED BRONZE						
HF705-10.040-T-SB040-GB-B	HHQ00032	1/4"	30	£88.86	HHC03052	£39.60
HF705-10.040-T-SB040-GC-B	HHQ00036	3/8"	40	£88.86	HHC03052	£39.60
HF705-10.040-T-SB040-GD-B	HHQ00040	1/2"	45	£88.86	HHC03052	£39.60
60 MICRON SINTERED BRONZE						
HF705-10.040-T-SB060-GB-B	HHQ00033	1/4"	35	£88.86	HHC03053	£39.60
HF705-10.040-T-SB060-GC-B	HHQ00037	3/8"	45	£88.86	HHC03053	£39.60
HF705-10.040-T-SB060-GD-B	HHQ00041	1/2"	50	£88.86	HHC03053	£39.60



HIGH-PRESSURE FILTERS HF760 SERIES

Inline High Pressure filters series 760 are designed to be connected on the pressure line of the hydraulic circuit.

CAST IRON BODY GS 450-10 UNI 1801083 • BOWL: EXTRUDED STEEL • SEALS: BUNA
 FLOW RANGE: 30-450 L/MIN • MAX WORKING PRESSURE: 420 BAR • OPERATING TEMPERATURE -30 +90°C
 C/W BYPASS SET AT 6 BAR • C/W VISUAL DIFFERENTIAL INDICATOR



**UP TO
420
BAR**

OPTIONS AVAILABLE UPON REQUEST

- 3 MICRON GLASSFIBRE
- 6 MICRON GLASSFIBRE
- 210 BAR ELEMENT COLLAPSE PRESSURE RATING
- METRIC/NPT PORTS
- VITON SEALS
- ELECTRICAL DIFFERENTIAL INDICATOR
- VISUAL ELECTRICAL DIFFERENTIAL INDICATOR
- ELECTRICAL INDICATOR WITH THERMOSTAT
- VISUAL ELECTRICAL DIFFERENTIAL INDICATOR WITH THERMOSTAT

	HHI02030 HI25-111-B50-GD-B-SS H' VISUAL DIFFERENTIAL INDICATOR £107.82
	HHI02050 HI25-112-B50-GD-B-SS VISUAL ELECTRICAL DIFFERENTIAL INDICATOR £150.24
	HHI02065 HI25-113-B50-GD-B-SS U' VISUAL DIFFERENTIAL INDICATOR £166.16

	ORDER CODE	PORTS	MAX PRESS. BAR	FLOW	PRICE	ELEMENT	PRICE
3 MICRON FIBREGLASS							
HF760-20.080-AS-FG003-LC-B60-GD-B-XA-H	HHP02012	1/2"	420	25	£369.53	HHC01900	£75.71
HF760-20.080-AS-FG003-LC-B60-GE-B-XA-H	HHP02019	3/4"	420	25	£369.53	HHC01900	£75.71
HF760-20.106-AS-FG003-LC-B60-GD-B-XA-H	HHP02070	1/2"	420	30	£386.24	HHC01904	£86.18
HF760-20.106-AS-FG003-LC-B60-GE-B-XA-H	HHP02061	3/4"	420	30	£384.00	HHC01904	£126.48
HF760-20.203-AS-FG003-LC-B60-GD-B-XA-H	HHP03106	1/2"	420	50	£427.29	HHC01908	£126.48
HF760-20.203-AS-FG003-LC-B60-GE-B-XA-H	HHP03119	3/4"	420	55	£427.29	HHC01908	£106.58
HF760-30.115-AS-FG003-LC-B60-GE-B-XA-H	HHP03116	3/4"	420	55	£397.09	HHC01912	£106.58
HF760-30.115-AS-FG003-LC-B60-GF-B-XA-H	HHP03169	1"	420	60	£514.90	HHC01912	£146.09
HF760-30.223-AS-FG003-LC-B60-GE-B-XA-H	HHP03236	3/4"	420	90	£556.77	HHC01916	£146.09
HF760-30.223-AS-FG003-LC-B60-GF-B-XA-H	HHP03131	1"	420	100	£559.08	HHC01916	£151.99
HF760-40.102-AS-FG003-LC-B60-GF-B-XA-H	HHP03525	1"	280	105	£690.36	HHC01940	£151.99
HF760-40.102-AS-FG003-LC-B60-GG-B-XA-H	HHP03545	1 1/4"	280	105	£690.36	HHC01940	£151.99
HF760-40.102-AS-FG003-LC-B60-GH-B-XA-H	HHP03565	1 1/2"	280	110	£690.36	HHC01940	£151.99
HF760-40.132-AS-FG003-LC-B60-GF-B-XA-H	HHP03805	1"	280	125	£704.24	HHC01928	£168.47
HF760-40.132-AS-FG003-LC-B60-GG-B-XA-H	HHP03943	1 1/4"	280	140	£704.24	HHC01928	£168.47
HF760-40.132-AS-FG003-LC-B60-GH-B-XA-H	HHP03845	1 1/2"	280	140	£704.24	HHC01928	£168.47
HF760-40.227-AS-FG003-LC-B60-GF-B-XA-H	HHP04118	1"	280	200	£832.74	HHC01920	£252.45
HF760-40.227-AS-FG003-LC-B60-GG-B-XA-H	HHP04121	1 1/4"	280	210	£821.77	HHC01920	£252.45
HF760-40.227-AS-FG003-LC-B60-GH-B-XA-H	HHP04103	1 1/2"	280	225	£757.01	HHC01920	£252.45
HF760-40.372-AS-FG003-LC-B60-GF-B-XA-H	HHP04211	1"	280	250	£975.20	HHC01924	£375.05
HF760-40.372-AS-FG003-LC-B60-GH-B-XA-H	HHP04221	1 1/4"	280	260	£975.20	HHC01924	£375.05
HF760-40.372-AS-FG003-LC-B60-GH-B-XA-H	HHP04264	1 1/2"	280	270	£975.20	HHC01924	£375.05
6 MICRON FIBREGLASS							
HF760-20.080-AS-FG006-LC-B60-GD-B-XA-H	HHP02022	1/2"	420	30	£364.91	HHC01901	£75.60
HF760-20.080-AS-FG006-LC-B60-GE-B-XA-H	HHP02026	3/4"	420	35	£364.87	HHC01901	£75.60
HF760-20.106-AS-FG006-LC-B60-GD-B-XA-H	HHP02056	1/2"	420	40	£380.85	HHC01905	£85.44
HF760-20.106-AS-FG006-LC-B60-GE-B-XA-H	HHP02085	3/4"	420	40	£380.77	HHC01905	£85.44
HF760-20.203-AS-FG006-LC-B60-GD-B-XA-H	HHP03201	1/2"	420	55	£423.16	HHC01909	£125.95
HF760-20.203-AS-FG006-LC-B60-GE-B-XA-H	HHP02970	3/4"	420	60	£423.16	HHC01909	£125.95
HF760-30.115-AS-FG006-LC-B60-GE-B-XA-H	HHP03137	3/4"	420	60	£513.46	HHC01913	£106.02
HF760-30.115-AS-FG006-LC-B60-GF-B-XA-H	HHP03171	1"	420	65	£511.22	HHC01913	£106.02
HF760-30.223-AS-FG006-LC-B60-GE-B-XA-H	HHP03242	3/4"	420	100	£552.10	HHC01917	£145.74
HF760-30.223-AS-FG006-LC-B60-GF-B-XA-H	HHP03140	1"	420	110	£460.39	HHC01917	£145.74
HF760-40.102-AS-FG006-LC-B60-GF-B-XA-H	HHP03582	1"	280	120	£688.30	HHC01941	£155.72
HF760-40.102-AS-FG006-LC-B60-GG-B-XA-H	HHP03605	1 1/4"	280	120	£688.30	HHC01941	£155.72
HF760-40.102-AS-FG006-LC-B60-GH-B-XA-H	HHP03625	1 1/2"	280	125	£688.30	HHC01941	£155.72
HF760-40.132-AS-FG006-LC-B60-GF-B-XA-H	HHP03865	1"	280	140	£702.58	HHC01929	£172.55
HF760-40.132-AS-FG006-LC-B60-GG-B-XA-H	HHP04071	1 1/4"	280	160	£702.58	HHC01929	£172.55
HF760-40.132-AS-FG006-LC-B60-GH-B-XA-H	HHP03905	1 1/2"	280	160	£702.58	HHC01929	£172.55
HF760-40.227-AS-FG006-LC-B60-GF-B-XA-H	HHP04131	1"	280	210	£828.55	HHC01920	£257.56
HF760-40.227-AS-FG006-LC-B60-GG-B-XA-H	HHP04141	1 1/4"	280	225	£828.55	HHC01920	£257.56
HF760-40.227-AS-FG006-LC-B60-GH-B-XA-H	HHP04109	1 1/2"	280	250	£788.03	HHC01920	£257.56
HF760-40.372-AS-FG006-LC-B60-GF-B-XA-H	HHP04231	1"	280	260	£969.70	HHC01925	£383.95
HF760-40.372-AS-FG006-LC-B60-GG-B-XA-H	HHP04241	1 1/4"	280	275	£969.70	HHC01925	£383.95
HF760-40.372-AS-FG006-LC-B60-GH-B-XA-H	HHP04203	1 1/2"	280	290	£969.70	HHC01925	£383.95
10 MICRON FIBREGLASS							
HF760-20.080-AS-FG010-LC-B60-GD-B-XA-H	HHP02037	1/2"	420	35	£338.86	HHC01902	£44.79
HF760-20.080-AS-FG010-LC-B60-GE-B-XA-H	HHP02033	3/4"	420	40	£338.86	HHC01902	£44.79
HF760-20.106-AS-FG010-LC-B60-GD-B-XA-H	HHP02050	1/2"	420	45	£352.32	HHC01906	£49.94
HF760-20.106-AS-FG010-LC-B60-GE-B-XA-H	HHP02103	3/4"	420	50	£352.32	HHC01906	£49.94
HF760-20.203-AS-FG010-LC-B60-GD-B-XA-H	HHP03117	1/2"	420	60	£388.74	HHC01910	£74.25
HF760-20.203-AS-FG010-LC-B60-GE-B-XA-H	HHP03121	3/4"	420	70	£388.74	HHC01910	£74.25
HF760-30.115-AS-FG010-LC-B60-GE-B-XA-H	HHP03141	3/4"	420	70	£474.49	HHC01914	£62.51
HF760-30.115-AS-FG010-LC-B60-GF-B-XA-H	HHP03138	1"	420	75	£474.49	HHC01914	£62.51
HF760-30.223-AS-FG010-LC-B60-GE-B-XA-H	HHP03251	3/4"	420	120	£509.31	HHC01918	£85.56
HF760-30.223-AS-FG010-LC-B60-GF-B-XA-H	HHP03139	1"	420	130	£507.96	HHC01918	£85.56
HF760-40.102-AS-FG010-LC-B60-GF-B-XA-H	HHP03641	1"	280	140	£641.98	HHC01942	£94.42
HF760-40.102-AS-FG010-LC-B60-GG-B-XA-H	HHP03662	1 1/4"	280	150	£639.73	HHC01942	£94.42
HF760-40.102-AS-FG010-LC-B60-GH-B-XA-H	HHP03682	1 1/2"	280	150	£641.98	HHC01942	£94.42
HF760-40.132-AS-FG010-LC-B60-GF-B-XA-H	HHP03918	1"	280	170	£654.16	HHC01930	£104.75
HF760-40.132-AS-FG010-LC-B60-GG-B-XA-H	HHP03941	1 1/4"	280	190	£652.01	HHC01930	£104.75
HF760-40.132-AS-FG010-LC-B60-GH-B-XA-H	HHP03959	1 1/2"	280	200	£652.01	HHC01930	£104.75
HF760-40.227-AS-FG010-LC-B60-GF-B-XA-H	HHP04151	1"	280	240	£754.79	HHC01922	£151.63
HF760-40.227-AS-FG010-LC-B60-GG-B-XA-H	HHP04161	1 1/4"	280	260	£752.61	HHC01922	£151.63
HF760-40.227-AS-FG010-LC-B60-GH-B-XA-H	HHP04098	1 1/2"	280	280	£752.61	HHC01922	£151.63
HF760-40.372-AS-FG010-LC-B60-GF-B-XA-H	HHP04252	1"	280	280	£872.93	HHC01926	£227.01
HF760-40.372-AS-FG010-LC-B60-GG-B-XA-H	HHP04267	1 1/4"	280	310	£872.93	HHC01926	£227.01
HF760-40.372-AS-FG010-LC-B60-GH-B-XA-H	HHP04263	1 1/2"	280	320	£872.93	HHC01926	£227.01
HF760-40.517-AS-FG010-LC-B60-GH-B-XA-H	HHP05850	1 1/2"	280	375	£1254.62	HHC01964	£294.81
25 MICRON FIBREGLASS - PLEASE SEE NEXT PAGE							

HIGH-PRESSURE FILTERS HF760 SERIES



UP TO
420
BAR

	ORDER CODE	PORTS	MAX PRESS. BAR	FLOW	PRICE	ELEMENT	PRICE
25 MICRON FIBREGLASS							
HF760-20.080-AS-FG025-LC-B60-GD-B-XA-H	HHP02041	1/2"	420	45	£332.90	HHC01903	£33.95
HF760-20.080-AS-FG025-LC-B60-GE-B-XA-H	HHP02032	3/4"	420	50	£335.04	HHC01903	£33.95
HF760-20.106-AS-FG025-LC-B60-GD-B-XA-H	HHP02075	1/2"	420	60	£344.65	HHC01907	£41.46
HF760-20.106-AS-FG025-LC-B60-GE-B-XA-H	HHP02198	3/4"	420	70	£344.65	HHC01907	£41.46
HF760-20.203-AS-FG025-LC-B60-GD-B-XA-H	HHP03114	1/2"	420	80	£376.38	HHC01911	£60.71
HF760-20.203-AS-FG025-LC-B60-GE-B-XA-H	HHP03118	3/4"	420	90	£376.38	HHC01911	£60.71
HF760-30.115-AS-FG025-LC-B60-GE-B-XA-H	HHP03147	3/4"	420	90	£463.36	HHC01915	£51.33
HF760-30.115-AS-FG025-LC-B60-GF-B-XA-H	HHP03144	1"	420	100	£463.36	HHC01915	£51.33
HF760-30.223-AS-FG025-LC-B60-GE-B-XA-H	HHP03262	3/4"	420	130	£495.88	HHC01919	£72.50
HF760-30.223-AS-FG025-LC-B60-GF-B-XA-H	HHP03167	1"	420	150	£495.88	HHC01919	£72.50
HF760-40.102-AS-FG025-LC-B60-GF-B-XA-H	HHP03701	1"	280	170	£629.29	HHC01943	£82.91
HF760-40.102-AS-FG025-LC-B60-GG-B-XA-H	HHP03721	1 1/4"	280	190	£629.29	HHC01943	£82.91
HF760-40.102-AS-FG025-LC-B60-GH-B-XA-H	HHP03742	1 1/2"	280	200	£629.29	HHC01943	£82.91
HF760-40.132-AS-FG025-LC-B60-GF-B-XA-H	HHP03981	1"	280	210	£640.27	HHC01931	£91.96
HF760-40.132-AS-FG025-LC-B60-GG-B-XA-H	HHP04005	1 1/4"	280	225	£640.27	HHC01931	£91.96
HF760-40.132-AS-FG025-LC-B60-GH-B-XA-H	HHP04022	1 1/2"	280	240	£640.27	HHC01931	£91.96
HF760-40.227-AS-FG025-LC-B60-GF-B-XA-H	HHP04172	1"	280	250	£740.16	HHC01923	£130.17
HF760-40.227-AS-FG025-LC-B60-GG-B-XA-H	HHP04181	1 1/4"	280	280	£740.16	HHC01923	£130.17
HF760-40.227-AS-FG025-LC-B60-GH-B-XA-H	HHP04108	1 1/2"	280	300	£742.41	HHC01923	£130.17
HF760-40.372-AS-FG025-LC-B60-GF-B-XA-H	HHP04272	1"	280	300	£847.72	HHC01927	£190.09
HF760-40.372-AS-FG025-LC-B60-GH-B-XA-H	HHP04282	1 1/4"	280	330	£847.72	HHC01927	£190.09
HF760-40.372-AS-FG025-LC-B60-GH-B-XA-H	HHP04207	1 1/2"	280	350	£847.72	HHC01927	£190.09
HF760-40.517-AS-FG025-LC-B60-GH-B-XA-H	HHP05950	1 1/2"	280	450	£1221.46	HHC01965	£247.68

RETURN FILTERS



IN-LINE RETURN FILTERS HF620

These filters are designed specifically to be connected on the return line of any hydraulic circuit to provide safeguard from contaminating particles.

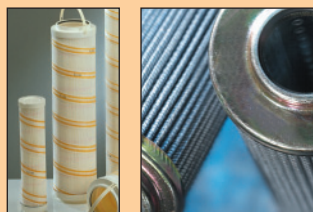
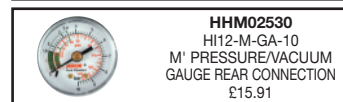
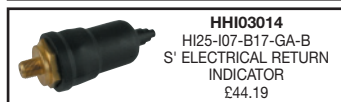
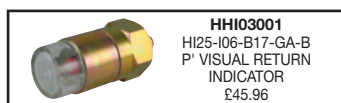
ALUMINIUM HEAD • STEEL BOWL • BUNA-VITON SEALS • C/W VISUAL INDICATOR (HF620-20)
C/W VISUAL INDICATOR (HF620-40) • FLOW RANGE 20-400 L/MIN • MAX WORKING PRESSURE 7 BAR
TESTING PRESSURE 10 BAR • BURST PRESSURE 15BM • 3 AND 6 MICRON AVAILABLE
OPERATING TEMPERATURE -30 +90 (c) BUNA SEALS -20 +1101 (c) VITON SEALS • BYPASS VALVE



UP TO
7
BAR

	ORDER CODE	PORTS	FLOW	PRICE	ELEMENT	PRICE
10 MICRON CELLULOSE						
HF620-20.135-AS-SP010-B17-GE-B-XA-PP-D	HHE13576	3/4"	50	£58.76	HHC01838	£18.92
HF620-20.180-AS-SP010-B17-GE-B-XA-PP-D	HHE18201	3/4"	60	£75.69	HHC01836	£36.78
HF620-30.155-AS-SP010-B17-GG-B-XA-PP-D	HHE20032	1 1/4"	140	£86.47	HHC01834	£28.42
HF620-30.210-AS-SP010-B17-GG-B-XA-GA-M	HHE24123	1 1/4"	160	£86.47	HHC01832	£48.96
HF620-40.155-AS-SP010-B17-GH-B-XC-GA-M	HHE30205	1 1/2"	300	£171.86	HHC01834*	£27.70
HF620-40.210-AS-SP010-B17-GH-B-XC-GA-M	HHE35195	1 1/2"	320	£209.56	HHC01832*	£48.96
25 MICRON CELLULOSE						
HF620-20.135-AS-SP025-B17-GE-B-XA-PP-D	HHE13174	3/4"	60	£56.55	HHC01841	£18.92
HF620-20.180-AS-SP025-B17-GE-B-XA-PP-D	HHE18214	3/4"	70	£65.18	HHC01806	£36.07
HF620-30.155-AS-SP025-B17-GG-B-XA-PP-D	HHE20028	1 1/4"	180	£81.58	HHC01843	£27.70
HF620-30.210-AS-SP025-B17-GG-B-XA-GA-M	HHE25214	1 1/4"	190	£81.58	HHC01816	£48.96
HF620-40.155-AS-SP025-B17-GH-B-XC-GA-M	HHE30190	1 1/2"	340	£162.13	HHC01843*	£28.42
HF620-40.210-AS-SP025-B17-GH-B-XC-GA-M	HHE35131	1 1/2"	360	£197.70	HHC01816*	£48.96

* 2 OFF REQUIRED



ASK FOR A COPY OF OUR FILTREC REPLACEMENT ELEMENTS CATALOGUE.





RETURN LINE FILTERS HF595

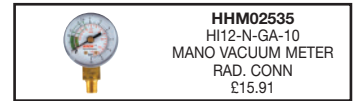
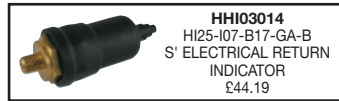
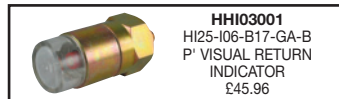
Suction or return line filters to be mounted with filter housing completely inside the oil tank. These can be directly connected to the pump inlet or manifold tank return line.

ANODISED ALUMINIUM CONSTRUCTION • BUNA-VITON SEALS • COMPLETE WITH VISUAL INDICATOR AND BYPASS FLOW RANGE 20-220 L/MIN • MAX WORKING PRESSURE 40BAR (ASK FOR DETAILS)
OPERATING TEMPERATURE -30 +90(°C) BUNA SEALS • OPERATING TEMPERATURE -20 +110(°C) VITON SEALS



UP TO
40
BAR

	ORDER CODE	PORTS	FLOW	PRICE	ELEMENT	PRICE
10 MICRON FIBREGLASS						
HF595-10.060-AS-FG010-B17-GD-B-Z-GA-N	HHL01433	1/2"	10	£125.49	IKR595E1	£53.81
HF595-20.077-AS-FG010-B17-GE-B-Z-GA-N	HHL01534	3/4"	35	£161.52	HHC01107	£55.65
HF595-20.122-AS-FG010-B17-GF-B-Z-GA-N	HHL01636	1"	60	£179.03	HHC01113	£69.60
HF595-30.195-AS-FG010-B17-GG-B-Z-GA-N	HHL01735	1 1/4"	100	£241.01	HHC01119	£139.06
10 MICRON CELLULOSE						
HF595-10.060-AS-SP010-B17-GD-B-Z-GA-N	HHL01410	1/2"	20	£81.65	HHC01098	£21.66
HF595-20.077-AS-SP010-B17-GE-B-Z-GA-N	HHL01510	3/4"	50	£110.44	HHC01104	£25.56
HF595-20.122-AS-SP010-B17-GF-B-Z-GA-N	HHL01610	1"	90	£119.39	HHC01109	£29.25
HF595-30.195-AS-SP010-B17-GG-B-Z-GA-N	HHL01710	1 1/4"	160	£179.96	HHC01115	£45.65
20 MICRON FIBREGLASS						
HF595-10.060-AS-FG020-B17-GD-B-Z-GA-N	HHL01449	1/2"	15	£123.27	HHC01103	£43.05
HF595-20.077-AS-FG020-B17-GE-B-Z-GA-N	HHL01550	3/4"	45	£127.90	HHC01108	£51.82
HF595-20.122-AS-FG020-B17-GF-B-Z-GA-N	HHL01650	1"	75	£142.68	HHC01114	£64.53
HF595-30.195-AS-FG020-B17-GG-B-Z-GA-N	HHL01750	1 1/4"	120	£237.01	HHC01120	£132.89
25 MICRON CELLULOSE						
HF595-10.060-AS-SP025-B17-GD-B-Z-GA-N	HHL01420	1/2"	25	£81.65	HHC01099	£21.66
HF595-20.077-AS-SP025-B17-GE-B-Z-GA-N	HHL01520	3/4"	60	£110.44	HHC01130	£25.56
HF595-20.122-AS-SP025-B17-GF-B-Z-GA-N	HHL01620	1"	120	£119.39	HHC01110	£29.25
HF595-30.195-AS-SP025-B17-GG-B-Z-GA-N	HHL01720	1 1/4"	190	£179.96	HHC01116	£45.65
60 MICRON WIREMESH						
HF595-10.060-AS-MI060-B17-GD-B-Z-GA-N	HHL01460	1/2"	35	£88.47	HHC01100	£31.23
HF595-20.077-AS-MI060-B17-GE-B-Z-GA-N	HHL01560	3/4"	130	£120.36	HHC01105	£39.97
HF595-20.122-AS-MI060-B17-GF-B-Z-GA-N	HHL01660	1"	160	£135.89	HHC01111	£51.70
HF595-30.195-AS-MI060-B17-GG-B-Z-GA-N	HHL01760	1 1/4"	220	£223.67	HHC01117	£111.89



Filtrtec S.r.l. offers a complete range of hydraulic filtration elements. The range also offers a complete product portfolio with Pressure and Return line filter, Spin-on elements, Suction strainers, Filler breathers for hydraulic, lubrication oil, fuel and air.

Moreover Filtrtec replacement elements fit in filter housings made by any other manufacturers, i.e. they fit geometrically as well as in terms of their filter performance.

Not only do Filtrtec offer a wide variety of filter housings but are also experts in designing and manufacturing filter elements. The original Filtrtec elements are ready for mounting in existent filter systems. With this complete range you can choose more than 50 000 different types of filter elements.

Our massive inventory allows you to order any part on short notice without having to provide your own warehousing.

We will gladly take your special requests and provide you with the items you need. All the Filtrtec products are designed and engineered for quality professional performance and long term reliability.

TANK TOP RETURN FILTERS



TANK-TOP RETURN FILTER HF502

These filters are designed specifically to be directly connected on the hydraulic return line on top of the hydraulic reservoir to provide safeguard from contaminating particles.

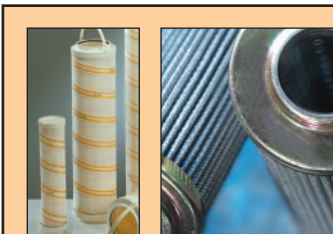
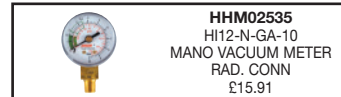
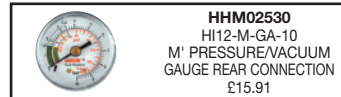
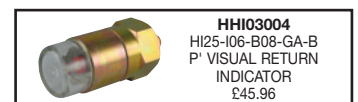
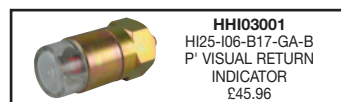
ALUMINIUM COVER AND HOUSING • STEEL BOWL • BUNA SEALS • C/W VISUAL INDICATOR • FLOW RANGE UP TO 600 L/MIN
 ADJUSTABLE BYPASS VALVE • MAX WORKING PRESSURE 8 BAR • TESTING PRESSURE 12 BAR
 BURST PRESSURE 16 BAR • OPERATING TEMPERATURE -30 +80 (°C), VITON SEALS -20 +110 (°C)



UP TO
8
BAR



	ORDER CODE	PORTS	FLOW	PRICE	ELEMENT	PRICE
10 MICRON CELLULOSE						
HF502-10.060-AS-SP010-B17-GC-B-H-Z-XD-GA-N	HHR00512	3/8"	15	£51.39	HHC03423	£14.56
HF502-10.060-AS-SP010-B17-GD-B-H-Z-XD-GA-N	HHR00670	1/2"	20	£51.39	HHC03423	£14.56
HF502-10.060-AS-SP010-B17-GE-B-H-Z-XD-GA-N	HHR01070	3/4"	25	£51.39	HHC03423	£14.56
HF502-20.077-AS-SP010-B17-GD-B-H-Z-XD-GA-N	HHR04570	1/2"	35	£59.84	HHC03554	£17.18
HF502-20.077-AS-SP010-B17-GE-B-H-Z-XD-GA-N	HHR04053	3/4"	40	£59.84	HHC03554	£17.18
HF502-20.122-AS-RP010-B17-GE-B-H-Z-XD-GA-N	HHR10200	3/4"	55	£62.67	HHC03577	£19.74
HF502-20.122-AS-RP010-B17-GF-B-H-Z-XD-GA-N	HHR10530	1"	65	£62.67	HHC03577	£19.74
HF502-20.201-AS-RP010-B17-GE-B-H-Z-XD-GA-N	HHR15555	3/4"	90	£76.00	HHC03612	£24.24
HF502-20.201-AS-RP010-B17-GF-B-H-Z-XD-GA-N	HHR16055	1"	100	£76.00	HHC03612	£24.24
HF502-30.162-AS-RP010-B17-GF-B-H-Z-XD-GA-N	HHR20070	1"	85	£104.42	HHC10149	£29.07
HF502-30.162-AS-RP010-B17-GG-B-H-Z-XD-GA-N	HHR20165	1 1/4"	95	£104.42	HHC10149	£29.07
HF502-30.195-AS-RP010-B17-GF-B-H-Z-XD-GA-N	HHR20370	1"	100	£104.42	HHC10192	£30.71
HF502-30.195-AS-RP010-B17-GG-B-H-Z-XD-GA-N	HHR20466	1 1/4"	120	£104.42	HHC10192	£30.71
HF502-30.239-AS-RP010-B17-GG-B-H-Z-XD-GA-N	HHR43201	1 1/4"	130	£124.47	HHC10501	£34.88
HF502-40.122-AS-RP010-B17-GH-B-H-Z-XD-GA-N	HHR45590	1 1/2"	140	£167.20	HHC45977	£29.75
HF502-40.162-AS-RP010-B17-GL-B-H-Z-XD-GA-N	HHR45706	2"	220	£167.20	HHC01303	£34.88
HF502-40.194-AS-RP010-B17-GL-B-H-Z-XD-GA-N	HHR46751	2"	300	£188.00	HHC00024	£37.90
HF502-40.195-AS-RP010-B17-GH-B-H-Z-XD-GA-N	HHR47415	1 1/2"	205	£188.00	HHC11131	£40.36
HF502-40.195-AS-RP010-B17-GL-B-H-Z-XD-GA-N	HHR48677	2"	305	£188.00	HHC11131	£40.36
HF502-40.239-AS-RP010-B17-GL-B-H-Z-XD-GA-N	HHR52404	2"	400	£301.86	HHC00028	£52.82
25 MICRON CELLULOSE						
HF502-10.060-AS-SP025-B17-GC-B-H-Z-XD-GA-N	HHR00272	3/8"	20	£51.39	HHC03430	£14.56
HF502-10.060-AS-SP025-B17-GD-B-H-Z-XD-GA-N	HHR00756	1/2"	25	£51.39	HHC03430	£14.56
HF502-10.060-AS-SP025-B17-GE-B-H-Z-XD-GA-N	HHR00764	3/4"	30	£51.39	HHC03430	£14.56
HF502-20.077-AS-SP025-B17-GD-B-H-Z-XD-GA-N	HHR04446	1/2"	40	£59.84	HHC03561	£17.18
HF502-20.077-AS-SP025-B17-GE-B-H-Z-XD-GA-N	HHR04062	3/4"	45	£59.84	HHC03561	£17.18
HF502-20.122-AS-RP025-B17-GF-B-H-Z-XD-GA-N	HHR10313	3/4"	60	£62.67	HHC03584	£19.74
HF502-20.122-AS-RP025-B17-GF-B-H-Z-XD-GA-N	HHR10414	1"	70	£62.67	HHC03584	£19.74
HF502-20.201-AS-RP025-B17-GE-B-H-Z-XD-GA-N	HHR16048	3/4"	100	£76.00	HHC03619	£24.24
HF502-20.201-AS-RP025-B17-GF-B-H-Z-XD-GA-N	HHR16421	1"	110	£76.00	HHC03619	£24.24
HF502-30.162-AS-RP025-B17-GF-B-H-Z-XD-GA-N	HHR20086	1"	95	£104.42	HHC10152	£29.07
HF502-30.162-AS-RP025-B17-GG-B-H-Z-XD-GA-N	HHR20187	1 1/4"	105	£104.42	HHC10152	£29.07
HF502-30.195-AS-RP025-B17-GF-B-H-Z-XD-GA-N	HHR20387	1"	120	£104.42	HHC10191	£30.71
HF502-30.195-AS-RP025-B17-GG-B-H-Z-XD-GA-N	HHR20493	1 1/4"	130	£104.42	HHC10191	£30.71
HF502-30.239-AS-RP025-B17-GG-B-H-Z-XD-GA-N	HHR43220	1 1/4"	140	£124.47	HHC10500	£34.88
HF502-40.122-AS-RP025-B17-GH-B-H-Z-XD-GA-N	HHR45701	1 1/2"	150	£193.65	HHC45980	£29.75
HF502-40.162-AS-RP025-B17-GL-B-H-Z-XD-GA-N	HHR45707	2"	240	£167.28	HHC00022	£34.88
HF502-40.194-AS-RP025-B17-GL-B-H-Z-XD-GA-N	HHR45714	2"	320	£188.00	HHC10950	£37.90
HF502-40.195-AS-RP025-B17-GH-B-H-Z-XD-GA-N	HHR47418	1 1/2"	225	£188.00	HHC01205	£40.36
HF502-40.195-AS-RP025-B17-GL-B-H-Z-XD-GA-N	HHR47970	2"	325	£188.00	HHC01205	£40.36
HF502-40.239-AS-RP025-B17-GL-B-H-Z-XD-GA-N	HHR52510	2"	500	£301.86	HHC00029	£52.82



ASK FOR A COPY OF OUR FILTREC REPLACEMENT ELEMENTS CATALOGUE.





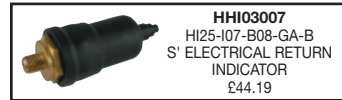
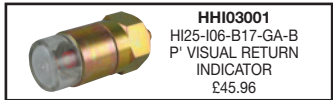
TANK-TOP RETURN FILTER HF550/HF554

REINFORCED NYLON PLASTIC COVER • ALUMINIUM HOUSING • REINFORCED NYLON BOWL • BUNA SEALS
 FLOW RANGE 20-600 L/MIN • ADJUSTABLE BYPASS VALVE • MAX WORKING PRESSURE 8 BAR • TESTING PRESSURE 12 BAR
 BURST PRESSURE 16 BAR • OPERATING TEMPERATURE -30 +80°C (BUNA), -20 +110°C (VITON)



UP TO
8
BAR

	ORDER CODE	PORTS	FLOW	PRICE	ELEMENT	PRICE
10 MICRON						
FITTED WITH 10 MICRON AIR BREATHER						
HF554-10.060-AS-SP010-B17-GC-B-S-Z-XA-GA-M-YN	HHD01050	3/8"	15	£75.53	HHC03423	£14.56
HF554-10.060-AS-SP010-B17-GD-B-S-Z-XA-GA-M-YN	HHD01350	1/2"	25	£75.53	HHC03423	£14.56
HF554-20.077-AS-SP010-B17-GE-B-S-Z-XA-GA-M-YN	HHD04310	3/4"	40	£101.94	HHC03554	£17.18
HF554-20.122-AS-RP010-B17-GF-B-S-Z-XA-GA-M-YN	HHD11050	1"	65	£111.01	HHC03577	£19.74
HF554-20.201-AS-RP010-B17-GG-B-S-Z-XA-GA-M-YN	HHD16810	1 1/4"	110	£127.76	HHC03612	£24.24
FITTED COMPLETE WITH FILLER BREATHER						
HF550-30.195-AS-RP010-B17-GG-B-L-Z-XA-GA-M-YN	HHA30150	1 1/4"	120	£131.37	HHC10192	£30.71
HF550-40.195-AS-RP010-B17-GH-B-L-Z-XA-GA-M-YN	HHA46150	1 1/2"	205	£181.04	HHC11131	£40.38
HF550-40.239-FS-RP010-B17-GL-B-L-Z-XA-GA-M-YN	HHA52150	2"	400	£213.06	HHC00028	£84.62
25 MICRON						
FITTED WITH 10 MICRON AIR BREATHER						
HF554-10.060-AS-SP025-B17-GC-B-S-Z-XA-GA-M-YN	HHD01080	3/8"	20	£75.53	HHC03430	£14.56
HF554-10.060-AS-SP025-B17-GD-B-S-Z-XA-GA-M-YN	HHD01380	1/2"	30	£75.53	HHC03430	£14.56
HF554-20.077-AS-SP025-B17-GE-B-S-Z-XA-GA-M-YN	HHD04360	3/4"	45	£101.95	HHC03561	£17.18
HF554-20.122-AS-RP025-B17-GF-B-S-Z-XA-GA-M-YN	HHD11100	1"	70	£124.23	HHC03584	£19.74
HF554-20.201-AS-RP025-B17-GG-B-S-Z-XA-GA-M-YN	HHD16870	1 1/4"	120	£127.76	HHC03619	£24.24
FITTED COMPLETE WITH FILLER BREATHER						
HF550-30.195-AS-RP025-B17-GG-B-L-Z-XA-GA-M-YN	HHA30160	1 1/4"	130	£157.52	HHC10191	£30.71
HF550-40.195-AS-RP025-B17-GH-B-L-Z-XA-GA-M-YN	HHA46165	1 1/2"	225	£206.04	HHC01205	£40.38
HF550-40.239-FS-RP025-B17-GL-B-L-Z-XA-GA-M-YN	HHA52156	2"	500	£236.69	HHC00029	£52.82



TANK TOP MOUNTED RETURN LINE FILTERS HF570

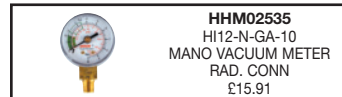
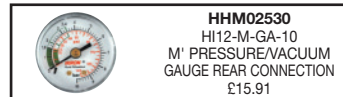
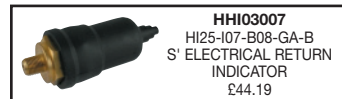
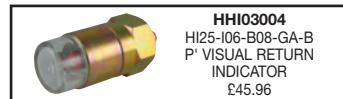
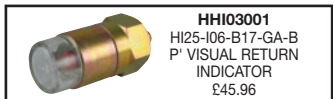
Retrofit all top name brands. Ask for details.

ALUMINIUM COVER AND HOUSING • STEEL BOWL AND DIFFUSER • BUNA SEALS
 FLOW RANGE 40 - 500 L/MIN • MAX WORKING PRESSURE 8 BAR • TESTING PRESSURE 12 BAR • BURST PRESSURE 16 BAR
 OPERATING TEMPERATURE -30 +80 (°C) BUNA SEALS, -20 +110 (°C) VITON SEALS
 SECONDARY RETURN PORT AS STANDARD • FILLER CAP FITTED AS STANDARD* • DIFFUSER FITTED AS STANDARD
 FULL FLOW MAGNETIC PRE FILTRATION ON THE HYDRAULIC RETURN LINE AS STANDARD



UP TO
8
BAR

	ORDER CODE	PORTS	FLOW	PRICE	ELEMENT	PRICE
10 MICRON						
HF570-20.105-AS-FG010-B08-GD-B-H-R-XA-GA-M-YN-D	HHF06815	1/2"	30	£233.84	HHC01760	£49.67
HF570-20.150-AS-FG010-B08-GE-B-H-R-XA-GA-M-YN-D	HHF14810	3/4"	50	£246.99	HHC01660	£56.37
HF570-20.300-AS-FG010-B08-GF-B-H-R-XA-GA-M-YN-D	HHF20060	1"	90	£460.56	HHC01700	£90.98
HF570-30.190-AS-FG010-B08-GG-B-L-R-XA-GA-M-YN-D	HHF26020	1 1/4"	120	£571.58	HHC01730	£95.34
HF570-30.465-AS-FG010-B08-GH-B-L-R-XA-GA-M-YN-D	HHF36050	1 1/2"	200	£571.58	HHC01480	£164.89
HF570-40.210-AS-FG010-GH-B-L-R-XA-M-YN-D	HHF40113	1 1/2"	200	£728.10	HHC01610	£130.89
HF570-40.290-AS-FG010-GH-B-L-R-XA-M-YN-D	HHF42115	1 1/2"	300	£774.57	HHC01540	£165.05
HF570-40.390-AS-FG010-GL-B-L-R-XA-M-YN-D	HHF44118	2"	340	£998.81	HHC01560	£149.27
HF570-40.480-AS-FG010-GL-B-L-R-XA-M-YN-D	HHF46118	2"	400	£874.22	HHC01580	£238.05
25 MICRON						
HF570-20.105-AS-FG025-B08-GD-B-H-R-XA-GA-M-YN-D	HHF06865	1/2"	40	£237.52	HHC01770	£47.15
HF570-20.150-AS-FG025-B08-GE-B-H-R-XA-GA-M-YN-D	HHF14860	3/4"	60	£248.14	HHC01670	£52.43
HF570-20.300-AS-FG025-B08-GF-B-H-R-XA-GA-M-YN-D	HHF20090	1"	100	£288.32	HHC01710	£85.00
HF570-30.190-AS-FG025-B08-GG-B-L-R-XA-GA-M-YN-D	HHF26030	1 1/4"	130	£460.82	HHC01740	£88.02
HF570-30.465-AS-FG025-B08-GH-B-L-R-XA-GA-M-YN-D	HHF36090	1 1/2"	220	£571.91	HHC01500	£153.35
HF570-40.210-AS-FG025-GH-B-L-R-XA-M-YN-D	HHF40025	1 1/2"	220	£717.92	HHC01620	£121.74
HF570-40.290-AS-FG025-GH-B-L-R-XA-M-YN-D	HHF42125	1 1/2"	320	£761.61	HHC01550	£152.86
HF570-40.390-AS-FG025-GL-B-L-R-XA-M-YN-D	HHF44025	2"	360	£813.73	HHC01570	£195.95
HF570-40.480-AS-FG025-GL-B-L-R-XA-M-YN-D	HHF46125	2"	420	£855.59	HHC01590	£221.42



SUCTION FILTERS



IN-LINE SUCTION FILTERS HF620

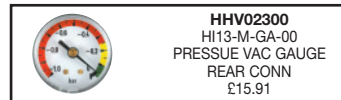
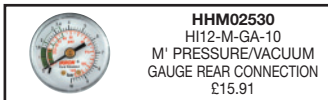
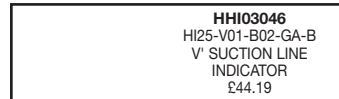
These filters are designed specifically to be connected on the suction line of any hydraulic circuit to provide safeguard from contaminating particles.

ALUMINIUM HEAD • STEEL BOWL • BUNA-VITON SEALS • C/W VISUAL INDICATOR (HF620-20)
C/W VISUAL INDICATOR (HF620-40) • FLOW RANGE 30-240 L/MIN • MAX WORKING PRESSURE 7 BAR
TESTING PRESSURE 10 BAR • BURST PRESSURE 15BM • OPERATING TEMPERATURE -30 +90 (°C) BUNA SEALS
-20 +1101 (°C) VITON SEALS • BYPASS VALVE



UP TO
7
BAR

	ORDER CODE	PORTS	FLOW L/MIN	PRICE	ELEMENT	PRICE
60 MICRON STEEL WIREMESH						
HF620-20.135-AS-MS060-B02-GE-B-XA-GA-M	HHE13054	3/4"	30	£124.13	HHC01822	£54.82
HF620-30.155-AS-MS060-B02-GG-B-XA-GA-M	HHE20532	1 1/4"	110	£172.76	HHC01824	£91.28
HF620-40.155-AS-MS060-B02-GH-B-XC-GA-M	HHE30152	1 1/2"	220	£233.66	HHC01824*	£91.28
125 MICRON STEEL WIREMESH						
HF620-20.135-AS-MS125-B02-GE-B-XA-GA-M	HHE13062	3/4"	40	£124.13	HHC01871	£54.82
HF620-30.155-AS-MS125-B02-GG-B-XA-GA-M	HHE20548	1 1/4"	120	£172.76	HHC01809	£91.28
HF620-40.155-AS-MS125-B02-GH-B-XC-GA-M	HHE30172	1 1/2"	240	£233.66	HHC01809*	£91.28



SUCTION LINE FILTERS HF595

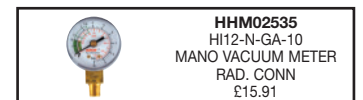
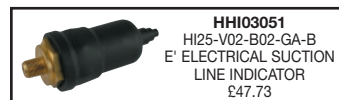
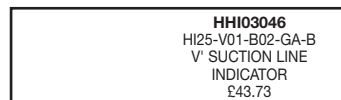
Suction line filters to be mounted with filter housing completely inside the oil tank. These can be directly connected to the pump inlet or manifold tank return line.

ANODISED ALUMINIUM CONSTRUCTION • BUNA-VITON SEALS • COMPLETE WITH VISUAL INDICATOR AND BYPASS
FLOW RANGE 0-35 L/MIN • MAX WORKING PRESSURE 40BAR (ASK FOR DETAILS)
OPERATING TEMPERATURE -30 +90(°C) BUNA SEALS • OPERATING TEMPERATURE -20 +110(°C) VITON SEALS



UP TO
40
BAR

	ORDER CODE	PORTS	MICRON	FLOW	PRICE	ELEMENT	PRICE
125 MICRON BRASS WIREMESH							
HF595-20.077-AS-MB125-B02-GE-B-Z-GA-N	HHL01514	1 1/4"	125	35	£177.32	HHC01131	£41.21
HF595-30.195-AS-MB125-B02-GG-B-Z-GA-N	HHL01717	1 1/4"	125	25	£177.32	HHC01145	£92.72



SUCTION STRAINERS

FLOWFIT



FLOWFIT SUCTION STRAINERS – 125 MICRON WIREMESH

Tank submerged suction strainers are fitted directly on the pump intake and provide filtration of contamination particles to the hydraulic pump system.

CARBON STEEL END CAPS • ALLUMINIUM HEAD • STAINLESS STEEL • MEDIA: 125 MICRON
FLOW RANGE 15-180 L/MIN • OPERATING TEMP +90°C • SEALS BUNA

	FLOW RATE	A(THREAD)	B(LENGTH)	C(O/D)	PRICE
FSP001	5 L/MIN	3/8"	44	24	£9.86
FSP002	10 L/MIN	3/8"	90	24	£11.51
FSP003	15 L/MIN	1/2"	105	30	£11.99
FSP005	25 L/MIN	3/4"	109	35	£14.99
FSP010	50 L/MIN	1"	139	46	£15.57
FSP012	80 L/MIN	1 1/4"	139	51	£20.14
FSP015	95 L/MIN	1 1/2"	168	60	£20.47
FSP030	130 L/MIN	1 1/2"	200	60	£33.07
FSP040	180 L/MIN	2"	235	70	£34.47
FSP050	330 L/MIN	2 1/2"	211	90	£58.51
FSP060	500 L/MIN	3"	272	100	£71.16

IKRON

IKRON SUCTION STRAINERS – 125 MICRON WIREMESH

MAX FLOW RATE 300 L/MIN • COLLAPSE PRESSURE 1 BAR • WORKING TEMP -30°C TO 110°C

HEAD NYLON • ENDCAP CARBON STEEL • WIREMESH 125 MICRON

AVAILABLE UPON REQUEST: 60,90 AND 250 MICRONS



IKRON	FLOW RATE	A(THREAD)	B(LENGTH)	C(O/D)	PRICE
N/A	12 L/MIN	3/8 BSP	90	46	£21.65
N/A	15 L/MIN	1/2 BSP	105	46	£24.45
N/A	30 L/MIN	3/4 BSP	109	64	£28.50
N/A	35 L/MIN	1 BSP	139	64	£30.07
N/A	40 L/MIN	1 BSP	139	86	£34.94
N/A	45 L/MIN	1 1/4 BSP	139	86	£39.96
N/A	50 L/MIN	1 1/2 BSP	139	86	£36.16
N/A	90 L/MIN	1 1/2 BSP	200	86	£48.15
N/A	120 L/MIN	2 BSP	260	86	£54.69
N/A	95 L/MIN	1 1/2 BSP	151	150	£66.21
N/A	100 L/MIN	2 BSP	151	150	£66.21
N/A	180 L/MIN	2 1/2 BSP	211	150	£105.83
N/A	300 L/MIN	3 BSP	272	150	£123.10
HHB00010	15 L/MIN	3/8 BSP	83	52	£26.00
HHB00013	20 L/MIN	1/2 BSP	83	52	£26.00
HHB04002	20 L/MIN	1/2 BSP	104	70	£30.17
HHB10005	25 L/MIN	1/2 BSP	149	70	£35.12
HHB04005	30 L/MIN	3/4 BSP	104	70	£30.17
HHB04153	45 L/MIN	1 BSP	104	70	£27.34
HHB10060	55 L/MIN	1 1/4 BSP	104	70	£40.80
HHB10002	40 L/MIN	3/4 BSP	149	70	£35.12
HHB10059	55 L/MIN	1 BSP	149	70	£35.12
HHB10459	60 L/MIN	1 1/4 BSP	149	70	£35.12
HHB20002	60 L/MIN	1 BSP	155	99	£45.13
HHB20019	80 L/MIN	1 1/4 BSP	155	99	£45.13
HHB20026	90 L/MIN	1 1/2 BSP	155	99	£45.13
HHB20026	100 L/MIN	2 BSP	155	99	£45.13
HHB24020	60 L/MIN	1 BSP	195	99	£57.61
HHB24002	90 L/MIN	1 1/4 BSP	195	99	£57.61
HHB24080	120 L/MIN	1 1/2 BSP	195	99	£57.61
HHB24075	130 L/MIN	2 BSP	195	99	£57.61
HHB29002	65 L/MIN	1 BSP	228	99	£64.37
HHB30005	110 L/MIN	1 1/4 BSP	228	99	£64.37
HHB30002	130 L/MIN	1 1/2 BSP	228	99	£64.37
HHB30030	140 L/MIN	2 BSP	228	99	£64.37
HHB18021	25 L/MIN	1 BSP	109	99	£64.51
HHB18120	40 L/MIN	1 1/4 BSP	109	99	£64.51
	55 L/MIN	1 1/2 BSP	109	99	£64.51
HHB18253	60 L/MIN	2 BSP	109	99	£64.51
HHB42028	200 L/MIN	3 BSP	202	130	£81.94
HHB42002	140 L/MIN	2 BSP	202	130	£81.94
HHB42023	160 L/MIN	2 1/2 BSP	202	130	£81.94
HHB41006	190 L/MIN	3 BSP	162	130	£46.62
HHB40999	130 L/MIN	2 BSP	162	130	£107.51
HHB41002	150 L/MIN	2 1/2 BSP	162	130	£107.51
HHB46034	240 L/MIN	3 BSP	235	130	£80.73
HHB46002	200 L/MIN	2 BSP	235	130	£80.88
HHB46032	220 L/MIN	2 1/2 BSP	235	130	£80.88
HHB52013	300 L/MIN	3 BSP	279	130	£113.07
HHB52002	250 L/MIN	2 BSP	279	130	£113.07
HHB52016	270 L/MIN	2 1/2 BSP	279	130	£113.07

DIFFUSERS



FLOWFIT DIFFUSERS (LIMITED STOCKS LEFT)

Diffusers reduce aeration, foaming and reservoir noise in any hydraulic fluid application. Designed to help extend all types of pump life by reducing cavitation to pump inlet.

FLows ranging from 220 L/MIN – 500 L/MIN • PORT SIZES 2 1/2" – 3" • MADE OF STEEL AND NYLON END CAPS
OTHER SIZES OF DIFFUSERS AVAILABLE UPON REQUEST • FLOW RATE L/MIN WITH AP=0.1 BAR.

ORDER CODE	FLOW RATE L/MIN	THREAD	LENGTH (mm)	O/D (mm)	PRICE
D212	300	2 1/2"	211	150	£96.31
D300	500	3"	272	150	£137.91



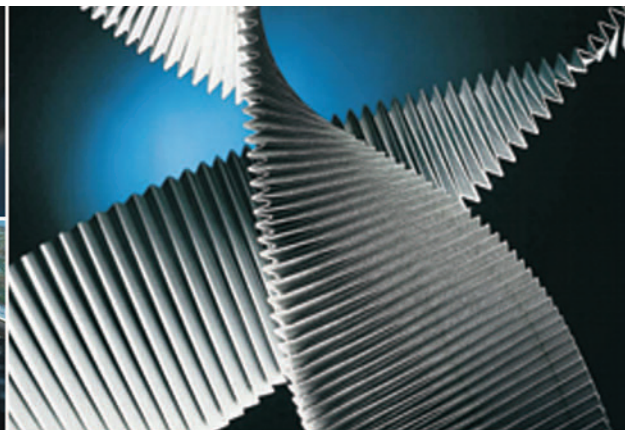
FILLER BREATHERS



FLOWFIT FILLER BREATHERS

CARBON STEEL • BASKET: PLASTIC AND 500 MICRON • FILTER: AIR INNER ELEMENT 40 MICRON
GASKETS: RUBBERISED CORK • SCREWS: SELF TAPPING

ORDER CODE	OUTER DIAMETER	TOTAL LENGTH	WIDTH OF BASKET	MOUNTING	PRICE
HHT02379	76.2mm	148mm	49.2mm	6 HOLE P.C.D. 70/73mm	£15.29
FBA5	45mm	109mm	28mm	3 HOLE P.C.D. 41.3mm	£15.29
WITH LOCKING LUG C/W PADLOCK					
FT8C 40/10L	76.2	148mm	49.2mm	6 HOLE P.C.D. 70/73mm	£9.93



**THE WORLDS LEADING HYDRAULIC
FILTER MANUFACTURER**



NON PRESSURISED BREATHER

CARBON STEEL AND PROTECTED WITH SPECIAL TREATMENT FOR PROTECTION AGAINST ATMOSPHERIC ELEMENTS
 BASKET: STEEL • FILTER: AIR ELEMENT 10 MICRON OR 40 MICRON • GASKETS: RUBBERISED CORK
 SCREWS: M5 • NON PRESSURISED



DESCRIPTION	ORDER CODE	OUTER DIAMETER	TOTAL LENGTH	BASKET LENGTH	MOUNTING	AIR RATING INNER ELEMENT	PRICE
STANDARD							
HB50-A-8-L-1-05-H-1-R	HHT02100	47mm	27.5mm	64mm	3 HOLE P.C.D 41mm	10	£16.89
HB50-B-8-L-1-05-H-1-R	HHT02120	47mm	27.5mm	64mm	3 HOLE P.C.D 41mm	40	£23.38
WITH CHAIN							
HB50-A-8-L-2-05-H-2-R	HHT02111	47mm	27.5mm	64mm	3 HOLE P.C.D 41mm	10	£25.85
HB50-B-8-L-2-05-H-2-R	HHT02110	47mm	27.5mm	64mm	3 HOLE P.C.D 41mm	40	£16.89
STANDARD							
HB70-A-8-L-1-05-H-1-R	HHT02140	70mm	36mm	97mm	6 HOLE P.C.D 72.5mm	10	£35.27
HB70-B-8-L-1-05-H-1-R	HHT02280	70mm	36mm	97mm	6 HOLE P.C.D 72.5mm	40	£32.49
WITH CHAIN							
HB70-A-8-L-2-05-H-2-R	HHT02370	70mm	36mm	97mm	6 HOLE P.C.D 72.5mm	10	£34.98
HB70-B-8-L-2-05-H-2-R	HHT02380	70mm	36mm	97mm	6 HOLE P.C.D 72.5mm	40	£24.61
WITH SAFETY LOCKING							
HB70-A-8-L-3-05-H-3-R	HHT02409	70mm	36mm	97mm	6 HOLE P.C.D 72.5mm	10	£39.64
HB70-B-8-L-3-05-H-3-R	HHT02400	70mm	36mm	97mm	6 HOLE P.C.D 72.5mm	40	£40.48



PRESSURISED BREATHER

CARBON STEEL AND PROTECTED WITH SPECIAL TREATMENT FOR PROTECTION AGAINST ATMOSPHERIC ELEMENTS
 BASKET: STEEL • FILTER: AIR ELEMENT 10 MICRON OR 40 MICRON
 GASKETS: RUBBERISED CORK • SCREWS: M5



DESCRIPTION	ORDER CODE	OUTER DIAMETER	TOTAL LENGTH	BASKET LENGTH	MOUNTING	AIR RATING INNER ELEMENT	PRICE
PRESSURISED STANDARD							
HB70-A-9-L-1-05-H-1-R	HHT02200	70mm	146mm	97mm	6 HOLE P.C.D 72.5mm	10	£40.87
HB70-B-9-L-1-05-H-1-R	HHT02340	70mm	146mm	97mm	6 HOLE P.C.D 72.5mm	40	£46.36
PRESSURISED WELD ON							
HB70-A-9-L-1-10-H-1-R	HHT02220	70mm	146mm	97mm	6 HOLE P.C.D 72.5mm	10	£40.41
HB70-B-9-L-1-10-H-1-R	HHT02160	70mm	146mm	97mm	6 HOLE P.C.D 72.5mm	40	£37.52
PRESSURISED WITH CHAIN							
HB70-A-9-L-2-05-H-2-R	HHT02259	70mm	146mm	97mm	6 HOLE P.C.D 72.5mm	10	£43.23
HB70-B-9-L-2-05-H-2-R	HHT02361	70mm	146mm	97mm	6 HOLE P.C.D 72.5mm	40	£40.21



FILLER BREATHER AND AIR FILTER

The filler breather and air filter are built in glass-filled nylon, a light material, strong and non-corrosive by exposure to atmospheric agents. Prevents oil splash during vehicle movement.

MAX AIRFLOW 1600 L/MIN • OPERATING TEMPERATURE -30 +90°C • FLUID COMPATABILITY: MINERAL OILS AND SYNTHETIC FLUID • CORK RUBBER SEALS • WEIGHT .02KG



ORDER CODE	DESCRIPTION	TOTAL LENGTH	BASKET WIDTH	BASKET LENGTH	O/D OF FILLER CAP	MOUNTING	PRICE
HHS02306	HB120-SP005-XN-G	174mm	47.5mm	97mm	118mm	6 Hole P.C.D 73mm	£50.37
HHS02300	HB120-SP010-XN-G	174mm	47.5mm	97mm	118mm	6 Hole P.C.D 73mm	£50.37





FILTREC

Technical Filtration

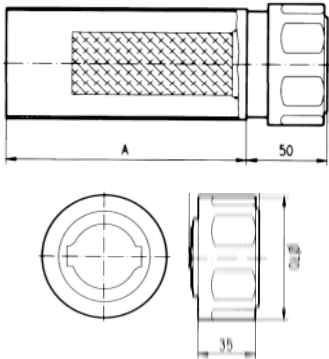


ASK FOR A COPY OF OUR FILTREC REPLACEMENT ELEMENTS CATALOGUE.



WELD ON FILLER BREATHER

40mm, 65mm, 80mm and 135mm extensions available.



DESCRIPTION	ORDER CODE	OUTER DIAMETER	WELD EXTENSION	BASKET LENGTH	MOUNTING	AIR RATING INNER ELEMENT	PRICE
STANDARD WITH INDICATOR							
HB70-B-8-L-1-10-H-1-R	HHT02300	70mm	-	97mm	6 HOLE P.C.D 72.5mm	40	£24.42
WELD ON MOUNTING 40mm EXTENSION							
HB70-A-8-L-1-15-H-1-R	HHT02148	70mm	40mm	97mm	6 HOLE P.C.D 72.5mm	10	£36.97
HB70-B-8-L-1-15-H-1-R	HHT02305	70mm	40mm	97mm	6 HOLE P.C.D 72.5mm	40	£36.97
WELD ON MOUNTING 65mm EXTENSION							
HB70-A-8-L-1-20-H-1-R	HHT02239	70mm	65mm	97mm	6 HOLE P.C.D 72.5mm	10	£37.28
HB70-B-8-L-1-20-H-1-R	HHT02328	70mm	65mm	97mm	6 HOLE P.C.D 72.5mm	40	£37.28
WELD ON MOUNTING 80mm EXTENSION							
HB70-A-8-L-1-25-H-1-R	HHT02238	70mm	80mm	97mm	6 HOLE P.C.D 72.5mm	10	£37.64
HB70-B-8-L-1-25-H-1-R	HHT02329	70mm	80mm	97mm	6 HOLE P.C.D 72.5mm	40	£37.64
WELD ON MOUNTING 135mm EXTENSION							
HB70-A-8-L-1-30-H-1-R	HHT02240	70mm	135mm	97mm	6 HOLE P.C.D 72.5mm	10	£38.37
HB70-B-8-L-1-30-H-1-R	HHT02320	70mm	135mm	97mm	6 HOLE P.C.D 72.5mm	40	£38.37
WELD ON MOUNTING EXTENSION & CHAIN							
HB70-A-8-L-2-10-H-2-R	HHT02440	70mm	-	97mm	6 HOLE P.C.D 72.5mm	10	£27.04
HB70-B-8-L-2-10-H-2-R	HHT02390	70mm	-	97mm	6 HOLE P.C.D 72.5mm	40	£27.04
WELD ON MOUNTING 40mm EXTENSION & CHAIN							
HB70-A-8-L-2-15-H-2-R	HHT02372	70mm	40mm	97mm	6 HOLE P.C.D 72.5mm	10	£38.72
HB70-B-8-L-2-15-H-2-R	HHT02306	70mm	40mm	97mm	6 HOLE P.C.D 72.5mm	40	£38.72
WELD ON MOUNTING 65mm EXTENSION & CHAIN							
HB70-A-8-L-2-20-H-2-R	HHT02442	70mm	65mm	97mm	6 HOLE P.C.D 72.5mm	10	£39.01
HB70-B-8-L-2-20-H-2-R	HHT02398	70mm	65mm	97mm	6 HOLE P.C.D 72.5mm	40	£39.01
WELD ON MOUNTING 80mm EXTENSION & CHAIN							
HB70-A-8-L-2-25-H-2-R	HHT02443	70mm	80mm	97mm	6 HOLE P.C.D 72.5mm	10	£39.36
HB70-B-8-L-2-25-H-2-R	HHT02394	70mm	80mm	97mm	6 HOLE P.C.D 72.5mm	40	£39.36
WELD ON MOUNTING 135mm EXTENSION & CHAIN							
HB70-A-8-L-2-30-H-2-R	HHT02441	70mm	135mm	97mm	6 HOLE P.C.D 72.5mm	10	£40.09
HB70-B-8-L-2-30-H-2-R	HHT02399	70mm	135mm	97mm	6 HOLE P.C.D 72.5mm	40	£40.09



LOCKABLE FILLER BREATHER



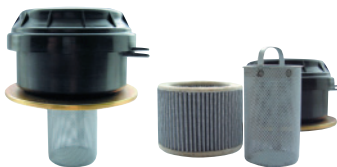
Specially suitable for filtering and cleaning the air exchanged between the tank and the outside atmosphere when the volume of fluid in the tank varies. They optimise filling of the tank with hydraulic fluid, retaining impurities and foreign bodies. They come complete with the accessories required for assembly (screws, seals etc.)
The recommended flow rate corresponds to the maximum air flow with a pressure drop of 0.015 bar.

NEW LOCKABLE FILLER BREATHER • PROTECT YOUR OIL AND FUEL • ADD SECURITY NOW TO YOUR SYSTEMS
STOP VANDALISM AND THEFT • STOP UNWANTED CONTAMINATION • CHROME PLATED STEEL WITH BAYONET CLOSURE AND KEY LOCK

ORDER CODE	AIR RATING INNER ELEMENT	AIR FLOW L/MIN	O/D	LENGTH OF BASKET	WIDTH OF BASKET	MOUNTING	PRICE
LFB2	40	700	75	80	50	6 HOLE PCD 73MM	£92.33
LFB3	40	700	75	150	50	6 HOLE PCD 73MM	£97.62

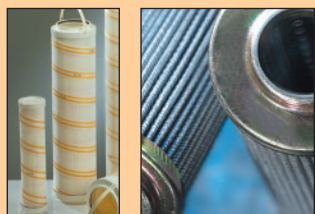


LOCKABLE CLEANABLE FILLER BREATHER



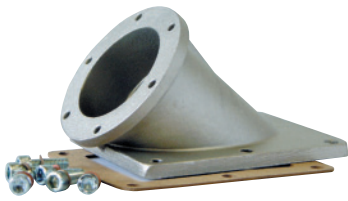
JUST ONE HOLE (65MM±10) IN THE TANK COVER IS NEEDED TO FIX IT
THE 5µm. FILTER ELEMENT CAN BE REMOVED FOR CLEANING OR REPLACEMENT • LOCKABLE BASKET CAN BE REMOVED

ORDER CODE	PRICE	ELEMENTS	PRICE
FBLC	£39.29	FBLCE	£24.72



ASK FOR A COPY OF OUR FILTRAC REPLACEMENT ELEMENTS CATALOGUE.





ANGLED FILLER BREATHER

Angled filler breather designed for installation on vertical or inclined sides. Complete with washers and screws.
 Angled filler breather plate only – for filler breathers that can be FIXED TO THIS ANGLED FILLER BREATHER SEE P104
 FBA25, FBA25L, FT8C101, FT8C102, FT8C401, FT8C402, HHT02380, HHT02340, HHT02550, LFB2 AND LFB3 ARE ALL SUITABLE JUST ONE HOLE (65MM±10) IN THE TANK COVER IS NEEDED TO FIX IT • THE 5µm. FILTER ELEMENT CAN BE REMOVED FOR CLEANING OR REPLACEMENT • LOCKABLE • BASKET CAN BE REMOVED

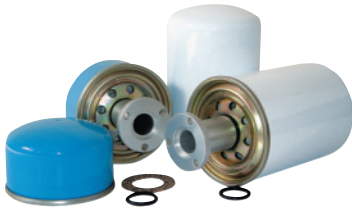
ORDER CODE	PRICE
AFB1	£54.41



PUSH IN FILLER BREATHER

Filler breather for tank top installation with breather and strainer and complete with safety chains.
 Just drill a hole and push in. Now no need to drill fixing holes, just cut a hole in the top of the reservoir with a diameter of 55mm min and 55.3mm max. Wall thickness must not exceed 8mm and not less than 2mm.
 Assembly contains 3 parts. To install the inside locking ring has to be removed to insert the main body into a pre-drilled hole. Once inserted the inside locking ring has to be installed and then the external locking ring has to be tightened. MAX OPERATING TEMPERATURE 70-80°C

ORDER CODE	ØF	ØD	Ød	h1	h2	h3	h4	S	PRICE
CTR/C	55	88	38	55	80	88	21	2-8	£55.43



SPIN-ON AIR BREATHER

High capacity air filters 700 L/MIN and 1500 L/MIN displacement designed to remove airborne dirt in any hydraulic system.
 Please note when fitting a pressurised breather the reservoir must be capable of withstanding pressurisation.

MOUNTED TO TOP OF HYDRAULIC TANK • 3 HOLE FIXING FLANGE
 REMOVABLE MAINTENANCE FRIENDLY 5 MICRON SPIN ON CANISTER

ORDER CODE	RATED AIR FLOW	AIR RATING INNER ELEMENT	O/D	LENGTH (B)	WEIGHT KG	PRICE	ELEMENT	PRICE
AIRF1	0.7m3MIN	5 MICRON	96MM	114MM	0.7	£95.99	RF1	£68.21
AIRF2	1.5m3MIN	5 MICRON	96MM	196MM	0.7	£100.24	RF2	£71.45



AIR BREATHERS

The air filters AF105 series are built in steel and are protected with a special treatment to protect them against atmospheric corrosion.

UPON REQUEST M12, M18, M22 x 1.5 THREADS

ORDER CODE	THREAD	LENGTH	O/D	MICRON	AIRFLOW	WEIGHT	PRICE
HHS02100	1/4"	54mm	48mm	5 Micron	200(f/min)	0.11	£18.42
HHS02106	3/8"	54mm	48mm	5 Micron	200(f/min)	0.13	£18.29
HHS02131	1/2"	74mm	67mm	5 Micron	500 (f/min)	0.27	£23.06
HHS02109	1/4"	54mm	48mm	10 Micron	200(f/min)	0.11	£14.85
HHS02101	3/8"	54mm	48mm	10 Micron	200(f/min)	0.13	£14.85
HHS02134	1/2"	74mm	67mm	10 Micron	500 (f/min)	0.27	£18.77



PLASTIC HYDRAULIC THREADED AIR BREATHERS

PLASTIC THREADED HYDRAULIC BREATHERS WITH 40 MICRON FILTRATION

ORDER CODE	THREAD	LENGTH	O/D	PRICE
PH8	3/8"	32mm	34.5mm	£13.15
PH10	1/2"	38mm	40mm	£13.15
PH12	3/4"	38.5mm	45mm	£18.40
PH13	1"	47mm	50mm	£19.13
PHB	1"	68mm	84mm	£19.15



STEEL HYDRAULIC THREADED AIR BREATHERS

STEEL THREADED HYDRAULIC BREATHERS WITH 40 MICRON FILTRATION

ORDER CODE	THREAD	LENGTH	O/D	PRICE
BH6	1/4"	63mm	45mm	£13.15
BH8	3/8"	63mm	45mm	£13.15
BH10	1/2"	63mm	45mm	£19.75
BH12	3/4"	75mm	77mm	£21.05
BH13	1"	75mm	77mm	£21.75
BHB	1"	100mm	80mm	£21.75

LEVEL INDICATORS

Level indicators are mounted on hydraulic reservoirs containing oil based fluids to allow the monitoring of the oil level. We also offer options with thermometer to monitor the temperature.

FILTREC LEVEL INDICATORS

OPERATING TEMPERATURE -30 +80 (°c) • THERMOMETER DOUBLE SCALE 0-100 (°c) / 30-210°F
ANODIZED ALUMINIUM FRAME WITH NYLON FACE • HEADS: NYLON • SCREWS: ZINC STEEL • SEAL: BUNA-N



ORDER CODE	HOLE CENTRES	BOLT THREAD SIZE	LENGTH	WIDTH	PRICE
FL1M10	76mm	M10x1.5	106mm	36mm	£13.85
FL1M12	76mm	M12x1.75	106mm	36mm	£13.85
FL1TM10*	76mm	M10x1.5	106mm	36mm	£15.91
FL1TM12*	76mm	M12x1.75	106mm	36mm	£15.91
FL2M10	127mm	M10x1.5	157mm	36mm	£17.63
FL2M12	127mm	M12x1.75	157mm	36mm	£17.63
FL2TM10*	127mm	M10x1.5	157mm	36mm	£20.94
FL2TM12*	127mm	M12x1.75	157mm	36mm	£20.94
FL3M10	254mm	M10x1.5	284mm	36mm	£37.86
FL3M12	254mm	M12x1.75	284mm	36mm	£37.86
FL3TM10*	254mm	M10x1.5	284mm	36mm	£40.42
FL3TM12*	254mm	M12x1.75	284mm	36mm	£40.42

* C/W THERMOMETER DOUBLE SCALE 0-100°C / 30-210°F

ELECTRIC TYPE LEVEL INDICATORS

FLUID LEVEL OBSERVED AT 150° ANGLE • O RING SEALS ON EVERY CONNECTION POINT GUARANTEEING LEAKAGE PROOF FIXATION • THERMOMETER SCALE 0-100°C MIN/MAX OPERATING TEMPERATURE -20 +80°C MAX GAUGE PRESSURE 0.5BAR • SEALS 70° SHORE • IP65 ELECTRIC PROTECTION • MAXIMUM CONTACT LOAD • ALTERNATIVELY CURRENT UP TO 220V (0.5A) • DIRECT CURRENT UP TO 125V (0.3A)

- Gauge manufactured with oil proof plastic
- Suitable for use on all ac up to 220 A/AC
- DC up to 125v/dc.
- Electric features include normally open (n.a) electric contact in non alarm position



PART NUMBER	HOLE CENTRES	BOLT THREAD SIZE	PRICE
LIE2	127MM	M12 X 1.75	£119.21
LIE 3	254MM	M12 X 1.75	£160.74

FILTREC Technical Filtration

Filtrtec S.r.l. offers a complete range of hydraulic filtration elements. The range also offers a complete product portfolio with Pressure and Return line filter, Spin-on elements, Suction strainers, Filler breathers for hydraulic, lubrication oil, fuel and air.

Moreover Filtrtec replacement elements fit in filter housings made by any other manufacturers, i.e. they fit geometrically as well as in terms of their filter performance.

Not only do Filtrtec offer a wide variety of filter housings but are also experts in designing and manufacturing filter elements. The original Filtrtec elements are ready for mounting in existent filter systems. With this complete range you can choose more than 50 000 different types of filter elements.

Our massive inventory allows you to order any part on short notice without having to provide your own warehousing.

We will gladly take your special requests and provide you with the items you need. All the Filtrtec products are designed and engineered for quality professional performance and long term reliability.



ELECTRIC LEVEL INDICATORS



FLOATING LEVEL GAUGE BSP AND 3 HOLE MOUNT

Tank-top mounted they give an electrical signal when the minimum fluid level is reached. They are always supplied with open contacts.

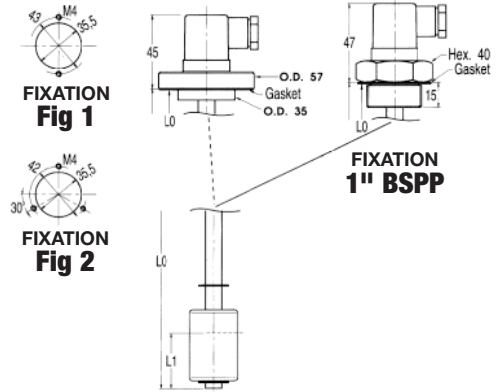
With just one contact you have both possible electric connections normally open or normally closed.

- Min or min/max level monitoring
- Compatible with mineral oils, oil-water emulsions, diesel and water
- Unsinkable floater
- Electric contact hermetically sealed inside the floater rod
- Flanged or nut type fixation to tank cover

PART NUMBER	LENGTH (LO)	PRICE
FLG100	100mm	£111.58
FLG150	150mm	£114.83
FLG200	200mm	£117.34
FLG250	250mm	£119.63
FLG300	300mm	£122.89
FLG350	350mm	£122.89
FLG400	400mm	£128.22
FLG450	450mm	£128.22
FLG550	500mm	£135.14

VOLTAGE All voltages DC/AC up to 240V	TEMPERATURE RANGE -10 to +80°C	Electric connections
MAX CURRENT 220V, 60W, 60VA, A1	MAX PRESSURE 12 Bar	

ORDER JUST THE ONE AND YOU HAVE ALL THREE FIXING POINTS IN ONE LEVEL GAUGE

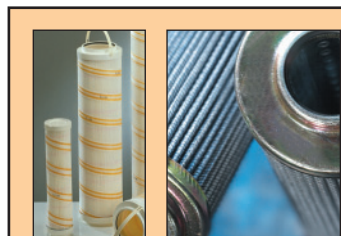
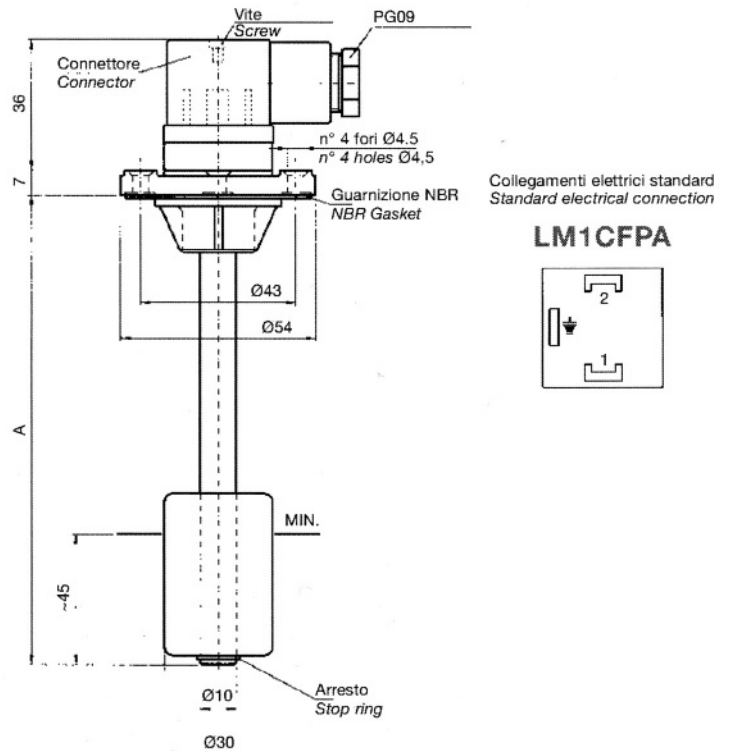


ELECTRIC FLOAT LEVEL SWITCHES 2 HOLE MOUNT

Material: Flange in thermoplastic, brass stem, stop rings in bronze, NBR float.
NB: Customized lengths can be supplied on request. Max length 1500mm
Executions also available in accordance with the Directive ATEX 94//9/EC on intrinsic safety equipment with marking II 1/2 G Ex ia IIB T6.

PART NUMBER	LENGTH (A)	PRICE
LM1CFPA150	150	£114.82
LM1CFPA200	200	£117.51
LM1CFPA250	250	£119.63
LM1CFPA300	300	£122.89
LM1CFPA350	350	£122.89
LM1CFPA400	400	£128.22
LM1CFPA450	450	£128.22
LM1CFPA500	500	£135.14

LM1CFPA... LM2CFPA...

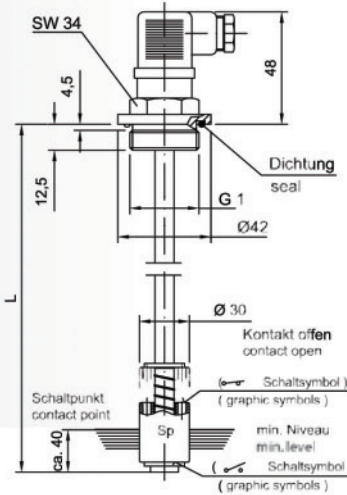


ASK FOR A COPY OF OUR FILTREC REPLACEMENT ELEMENTS CATALOGUE.

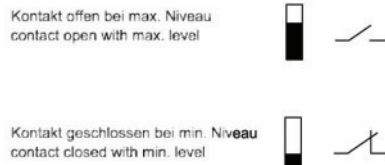


SERIE NS 1

MIT 1 SCHALKKONTAKT
WITH 1 SWITCH CONTACT



ART.-NR. PART NO.	TYP TYPE	L	£ LIST
FLG1420	NS 1-NO/100	100	£95.83
FLG1422	NS 1-NO/150	150	£96.76
FLG1424	NS 1-NO/200	200	£97.68
FLG1426	NS 1-NO/250	250	£99.97
FLG1428	NS 1-NO/300	300	£102.26
FLG1430	NS 1-NO/350	350	£103.18
FLG1432	NS 1-NO/400	400	£107.30
FLG1434	NS 1-NO/500	500	£111.88



Durch Drehen des Schwimmers wird der Kontakt geändert auf:
Max. Niveau = Kontakt geschlossen
Min. Niveau = Kontakt offen

By turning the float the contact is changed to:
max. level = contact closed
min. level = contact open

PRODUKTBESCHREIBUNG

- Elektrische Niveauüberwachung
- Geeignet für Mineralöle, Diesel und Benzin
- 1 Schaltkontakt
- Elektrische Schaltung für Niveau, min./max.
- Standardausführung Niveau max = Kontakt offen

DESCRIPTION

- Electrical level supervision
- Appropriate for mineral oil, diesel and benzine
- 1 switch contact
- Electrical circuit for level, min/max
- Standard version level max = contact open

TECHNISCHE DATEN

TECHNICAL DATA

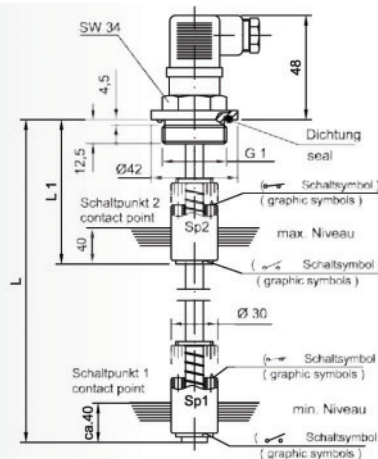
- **Kontaktrohr / Stem:** Messing / Brass
- **Schwimmer / Float:** Nylon
- **Max. Temp:** 80° C
- **Schutzart / Protection:** IP 65
- **Hysteresis / Hysteresis:** 2-3 mm
- **Max. Volt / Max voltage:** 250 VAC
- **Max. Schaltstrom / Max switch current:** Niveau 1,3 A / Level 1.3 A
- **Power AC/DC Niveau/Level:** 80 W/VA

NIVEAU-SCHWIMMSCHALTER

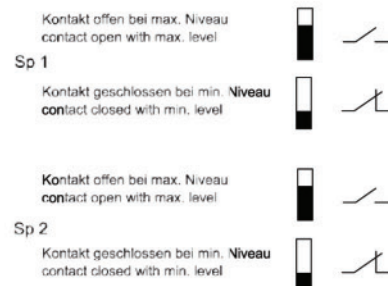
LEVEL SWITCHES

SERIE NS 2

MIT 2 SCHALKKONTAKTEN
WITH 2 SWITCH CONTACTS



ART.-NR. PART NO.	TYP TYPE	L	L ₁	£ LIST
FLG 1457	NS 2-NO/250/105	250	105	£272.40
FLG 1459	NS 2-NO/300/105	300	105	£272.40
FLG 1461	NS 2-NO/350/115	350	115	£272.40
FLG 1463	NS 2-NO/400/115	400	115	£282.92
FLG 1465	NS 2-NO/500/125	500	125	£282.92



Durch Drehen des Schwimmers wird der Kontakt geändert auf:
Max. Niveau = Kontakt geschlossen
Min. Niveau = Kontakt offen

By turning the float the contact is changed to:
max. level = contact closed
min. level = contact open

PRODUKTBESCHREIBUNG

- Elektrische Niveauüberwachung
- Geeignet für Mineralöle, Diesel und Benzin
- 2 Schaltkontakte
- Elektrische Schaltung für Niveau, min./max.
- Standardausführung Niveau max = Kontakt offen

DESCRIPTION

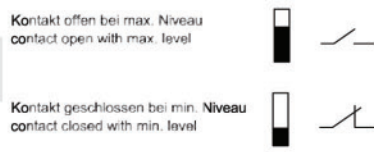
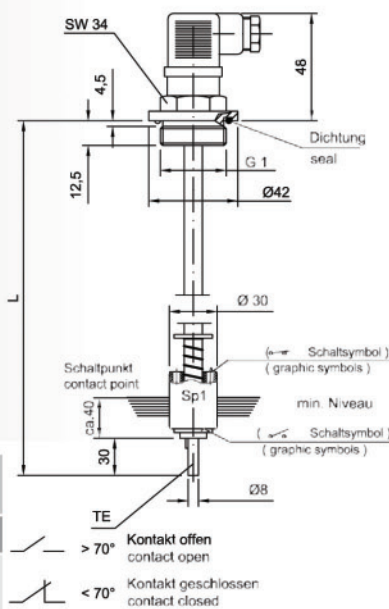
- Electrical level supervision
- Appropriate for mineral oil, diesel and benzine
- 2 switch contacts
- Electrical circuit for level, min/max
- Standard version level max = contact open

TECHNISCHE DATEN

TECHNICAL DATA

- **Kontaktrohr / Stem:** Messing / Brass
- **Schwimmer / Float:** Nylon
- **Max. Temp:** 80° C
- **Schutzart / Protection:** IP 65
- **Hysteresis / Hysteresis:** 2-3 mm
- **Max. Volt / Max voltage:** 250 VAC
- **Max. Schaltstrom / Max switch current:** Niveau 1,3 A / Level 1.3 A
- **Power AC/DC Niveau/Level:** 80 W/VA

SERIE NS 1-TE
MIT TEMPERATURSCHALTER
WITH TEMPERATURE SWITCH



PRODUKTBESCHREIBUNG

- Elektrische Niveau- und Temperaturüberwachung
- Geeignet für Mineralöle, Diesel und Benzin
- 1 Schaltkontakt Niveau / 1 Schaltkontakt Temperatur
- Elektrische Schaltung für Niveau, min./max.
- Standardausführung Niveau max = Kontakt offen
- Elektrische Schaltung für Temperatur < 70° Kontakt geschlossen

DESCRIPTION

- Electrical level supervision
- Appropriate for mineral oil, diesel and benzine
- 1 switch contact
- Electrical circuit for level, min / max
- Standard version level max = contact open

TECHNISCHE DATEN
TECHNICAL DATA

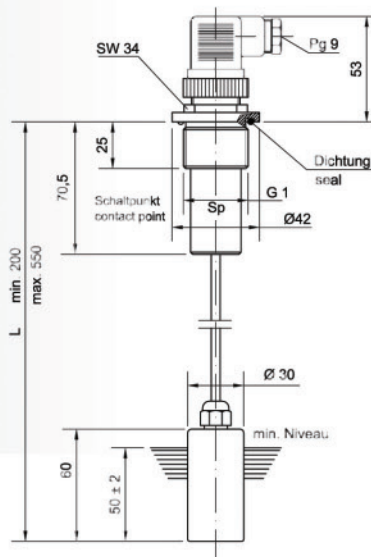
- **Kontaktrohr / Stem:** Messing / Brass
- **Schwimmer / Float:** Nylon
- **Max. Temp:** 80° C
- **Schutzart / Protection:** IP 65
- **Hysterese / Hysteresis:** 2-3 mm
- **Max. Volt / Max voltage:** 250 VAC
- **Max. Schaltstrom / Max switch current:** Niveau 1,3 A Temperatur 0,5 A
- **Power AC/DC Niveau/Level:** 80W/VA
- **Power AC/DC Temperatur:** 10W/VA

ART.-NR. PART NO.	TYP TYPE	L	TEMP.	£ LIST
FLG1502	NS 1-NO / 150 TE 70° NC	150	70°	£191.21
FLG1504	NS 1-NO / 200 TE 70° NC	200		£191.21
FLG1505	NS 1-NO / 240 TE 70° NC	240		£191.21
FLG1506	NS 1-NO / 250 TE 70° NC	250		£191.21
FLG1508	NS 1-NO / 300 TE 70° NC	300		£191.21
FLG1510	NS 1-NO / 350 TE 70° NC	350		£191.21
FLG1512	NS 1-NO / 400 TE 70° NC	400		£204.97
FLG1513	NS 1-NO / 450 TE 70° NC	450		£204.97
FLG1514	NS 1-NO / 500 TE 70° NC	500		£204.97

Durch Drehen des Schwimmers wird der Kontakt geändert auf:
 Max. Niveau = Kontakt geschlossen
 Min. Niveau = Kontakt offen

By turning the float the contact is changed to:
 max. level = contact closed
 min. level = contact open

SERIE NS 1-VR
MIT VARIABLEN SCHALTAKT
WITH VARIABLE SWITCH CONTACT



PRODUKTBESCHREIBUNG

- Elektrische Niveauüberwachung
- Geeignet für Mineralöle, Diesel und Benzin
- Variabel einstellbar von 200-500 mm durch Justierung / Kürzung des Kontaktrohres auf die gewünschte Länge

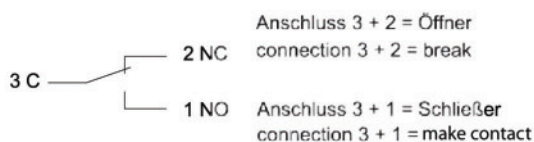
DESCRIPTION

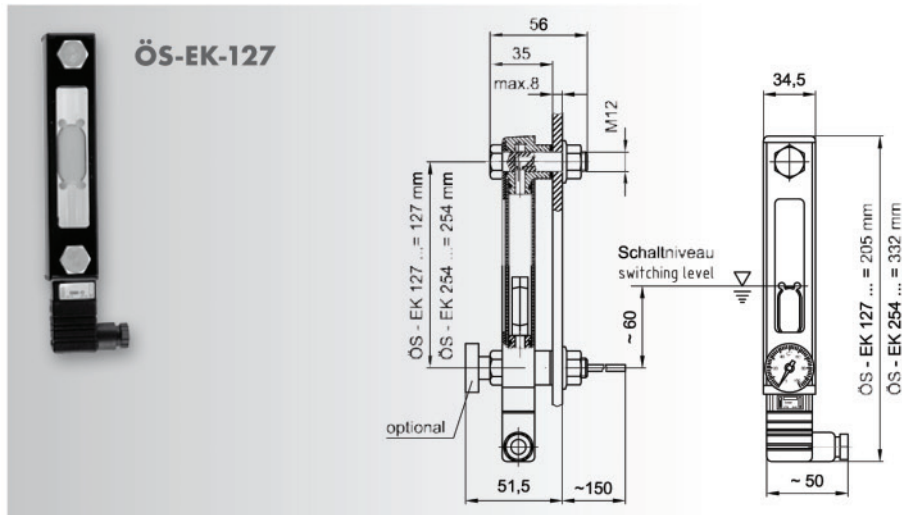
- Electrical level supervision
- Appropriate for mineral oil, diesel and benzine
- The indication level can be adjusted between 200-500 mm by cutting the stem of the length required

TECHNISCHE DATEN
TECHNICAL DATA

- **Kontaktrohr / Stem:** Indox aisi 304
- **Schwimmer / Float:** NBR
- **Max. Temp:** - 15... + 80° C
- **Hysterese / Hysteresis:** 2-3 mm
- **Kontaktart / Type of contact:** Reed
- **Max. Volt / Max voltage:** 230 VAC
- **Max. Schaltstrom / Max. switch current:** Niveau 1,0 A / Level 1.0 A
- **Schutzart / Protection:** IP 65
- **Power AC/DC Niveau / Power AC/DC Level:** 50 W/VA

ART.-NR. PART NO.	TYP TYPE	£ LIST
FLG1410	NS 1-VR (200-550 mm)	£201.32





PRODUKTBESCHREIBUNG

- Geeignet für Hydrauliköle HL und HLP
- Optionaler Einsatz mit Fühlerthermometer
- Wahlweise als Öffner oder Schließer erhältlich
- Leistungsdose gemäß DIN EN 175301-803-B/ISO6952

DESCRIPTION

- Suitable for hydraulic oils HL and HLP
- Optional use with probe therm
- Alternatively available as brake contact or make contact
- Contact box acc. to DIN EN 175301-803-B / ISO6952

ART.-NR. PART NO.	TYP TYPE	£ LIST
FLG2366	ÖS-EK-127-FPM-C/M12 R/L	£176.10
FLG2367	ÖS-EK-127-FPM-O/M12 R/L	£176.10
FLG2377	ÖS-EK-127-FPM-CT/M12 R/L	£233.31
FLG2378	ÖS-EK-127-FPM-OT/M12 R/L	£233.31
FLG2387	ÖS-EK-254-FPM-C/M12 R/L	£219.20
FLG2382	ÖS-EK-254-FPM-O/M12 R/L	£219.20
FLG2383	ÖS-EK-254-FPM-CT/M12 R/L	£294.85
FLG2386	ÖS-EK-254-FPM-OT/M12 R/L	£294.85

WERKSTOFFE

- Gehäuse: AL (pulverbeschichtet)
- Stopfen, Schauglas: PA
- Schwimmer: PA

TECHNISCHE DATEN

- Druckmitteltemperaturbereich: -20°C ... +80°C
- Anzeigebereich Fühlerthermometer: 0°C bis +100°C
- Behältervorspanndruck: max. 1 bar
- Dichtungen: Viton
- Schraubenanzugsmoment: 8 Nm max.

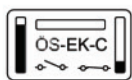
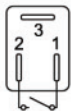
MATERIALS

- Case: AL (power coated)
- Plug, inspection glass: PA
- Swimmer: PA

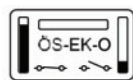
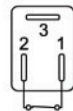
TECHNICAL DATA

- Temperature range of medium: -20°C ... +80°C
- Indication range probe therm: 0°C up +100°C
- Tank pressure: max. 1 bar
- Gaskets: viton
- Screw starting torque: 8 Nm max.

Typ C



Typ O



ELEKTRISCHE ANSCHLÜSSE / FUNKTION

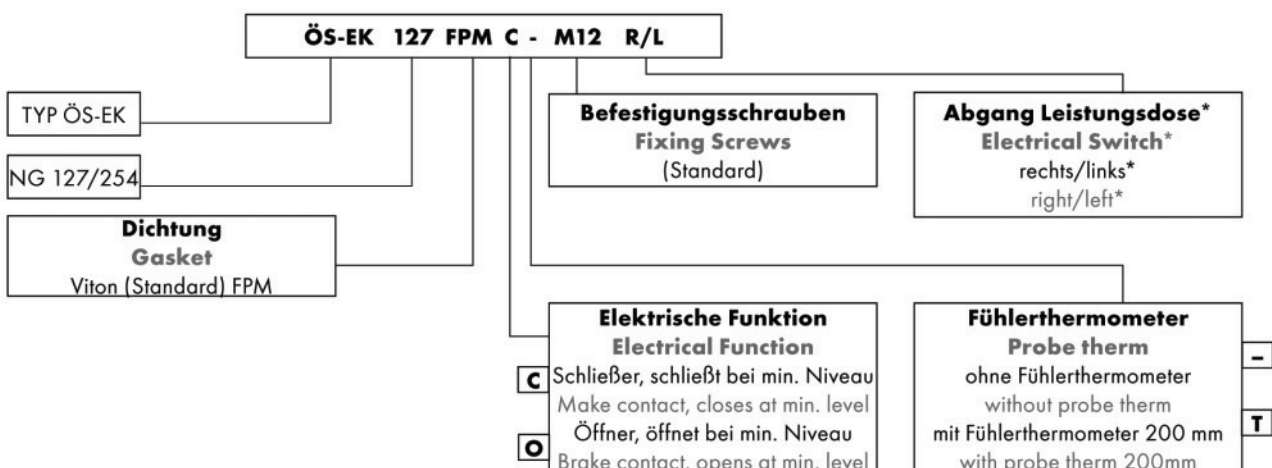
- Kontaktbelastung: max. 10 W (Typ C) max. 5 W (Typ O)
- Schaltspannung: 50 VAC / DC
- Schaltstrom: 0.25 A
- Leistungsdose mit PG9: Schutzart IP 65 Anschluss 3 nicht belegt

ELECTRICAL CONNECTIONS / FUNCTION

- Contact load: max. 10 W (Type C) max. 5 W (Type O)
- Turn-on voltage : 50 VAC/DC
- Switching current: 0.25 A
- Electrical switch PG9: connection 3 not engaged
- System of protection IP 65 connection 3 not engaged

BESTELLSCHLÜSSEL

ORDERING CODE



* Beim Anschluss der elektrischen Kontakte kann die Abgangsrichtung der Leitungsdose (rechts/links) der Typen C und O selber bestimmt werden.

* Regarding the connection of the electrical contacts the direction of the contact box (right or left) for the types C and O can be determined by the user.




FILTREC

Technical Filtration

FILTREC SIMPLEX AND DUPLEX INDUSTRIAL FILTERS


Filtrec industrial filters meet the most sophisticated requirements of modern equipment and plant applications. High efficiency, high dirt-holding capacity and reduced differential pressure are obtained with Filtrec elements.

INLINE SIMPLEX FILTERS




OUTSIDE TO INSIDE FLOW DIRECTION

IFS—RHR RANGE
 MAX FLOW: 4500 L/MIN
 MAX WORKING PRESSURE: 25 BAR




INLINE SIMPLEX FILTERS




OUTSIDE TO INSIDE FLOW DIRECTION

IFS—R4 RANGE
 MAX FLOW: 4500 L/MIN
 MAX WORKING PRESSURE: 25 BAR




INLINE SIMPLEX FILTERS

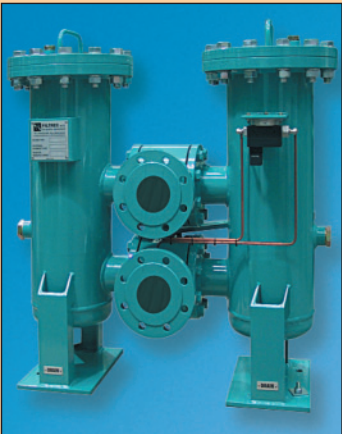


INSIDE TO OUTSIDE FLOW DIRECTION

IFS—R9 RANGE
 MAX FLOW: 4500 L/MIN
 MAX WORKING PRESSURE: 25 BAR




INLINE DUPLEX FILTERS




OUTSIDE TO INSIDE FLOW DIRECTION

IFD—RHR RANGE
 MAX FLOW: 4500 L/MIN
 MAX WORKING PRESSURE: 25 BAR




INLINE DUPLEX FILTERS

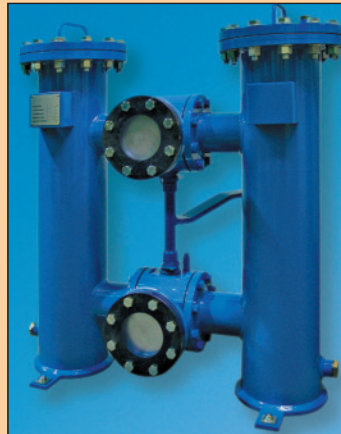


OUTSIDE TO INSIDE FLOW DIRECTION

IFD—R4 RANGE
 MAX FLOW: 4500 L/MIN
 MAX WORKING PRESSURE: 25 BAR




INLINE DUPLEX FILTERS



INSIDE TO OUTSIDE FLOW DIRECTION

IFD—R9 RANGE
 MAX FLOW: 4500 L/MIN
 MAX WORKING PRESSURE: 25 BAR



ASK FOR INFORMATION ON THE ABOVE WHICH CAN BE EMAILED, FAXED, SENT IN THE POST OR DOWNLOADED FROM www.flowfitonline.com





ASK FOR A COPY OF OUR FILTREC REPLACEMENT ELEMENTS CATALOGUE.



