

NEMO® NM Mini Metering Pumps

High-Precision Metering

quality

dependability

global leader

innovation

solutions



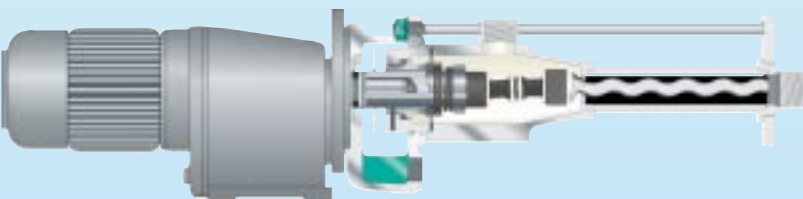
NETZSCH - The Heart of Your Process

NETZSCH

Small in Size, Big in Versatility and Flexibility

The smallest amounts of highly concentrated and viscous products require metering to an exact degree in the chemical, pharmaceutical and food industries. Likewise, the same applies for wastewater plants, pulp and paper industries and laboratory applications. For these precise dosing requirements, NETZSCH NEMO® offers an **NM Mini Metering Pump**. Optimized for metering low and high-viscosity materials, this low cost low maintenance pump offers accurate and repeatable flow capabilities easily adaptable to different capacities.

Providing consistent quality and performance that our satisfied customers have grown to expect, every **NM Mini Metering Pump** provides many value-added benefits:



Accurate, Repeatable Flow

NEMO® recognizes the importance of a precise, repeatable flow typically required in chemical processing and wastewater facilities. The Mini Metering design offers:

- Low shear rate ensuring less damage to sensitive products like chemicals, polymers and other treatment additives.
- Pulsation-free delivery resulting in product consistency and uniform metered flow.
- Flow rate that is proportional to the pump's operating speed, ensuring consistent and reliable output.

Optimum Adaptability

The capacity of NEMO's® modular designed Mini Metering Pump is directly dependent on the rotor speed. Four rotor and stator sizes are available for different products and capacities in a single modular pump package. With identical installation dimensions, these stators and rotors can be interchanged with minimal downtime and without altering the overall pump dimension. This feature provides the flexibility of capacity flow changes. Combining two or more NM Mini Metering Pumps allows precise conveying and mixing of several components with different viscosities and ratios of mixture.

Cost Efficient

The Mini Metering modular design is low in cost and compact in design, meeting all facility space restraints. Like all NEMO® Pumps, this metering pump's high volumetric, electrical and mechanical efficiencies promises power consumption savings.



- **Accurate Metering**
- **Optimum Adaptability**
- **Cost Efficient**
- **130 Years of Manufacturing Excellence Worldwide**

NM Mini Metering Pumps are available as bare shaft or complete with constant or variable speed drives. **Standard Mini Pumps** are manufactured with 316 stainless steel wetted components and single mechanical seal, with various stator elastomers available. A variety of pump materials are also available to suit application requirements.

All Mini Metering Pumps offers output capacities up to 160 GPH and pressure capacities of at least 180 PSI.

NEMO® Mini Metering Pumps are manufactured in accordance to different national and international standards, and can also be customized to suit specific applications by selecting from a variety of manufacturing materials. Sanitary designs are also available for food or pharmaceutical applications.

NEMO®'s NM Mini Metering Pumps can be used in a number of different industries including: chemical, pharmaceutical, cosmetic, food, wastewater, and pulp and paper.



Chemical Industry

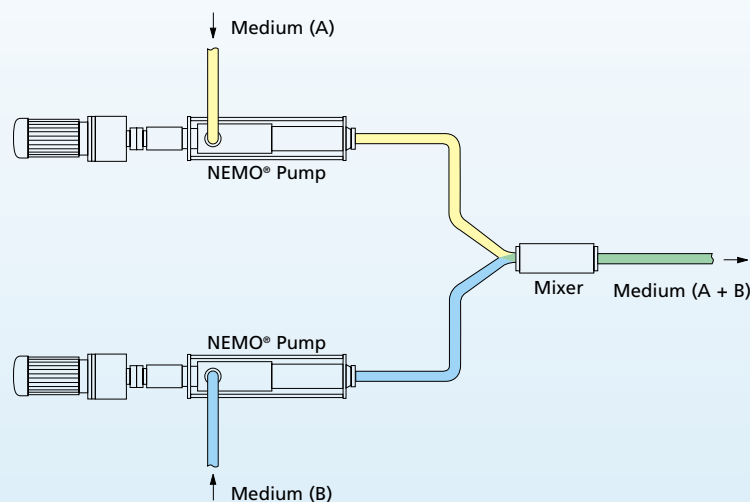


Water Treatment

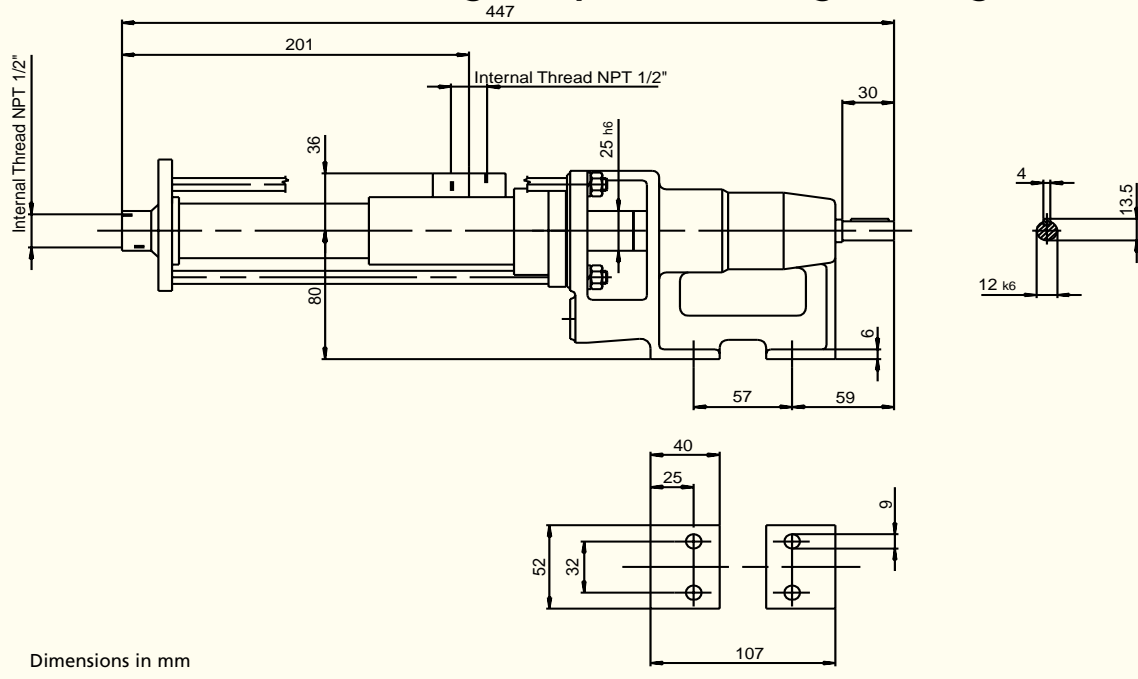


Pulp & Paper Industry

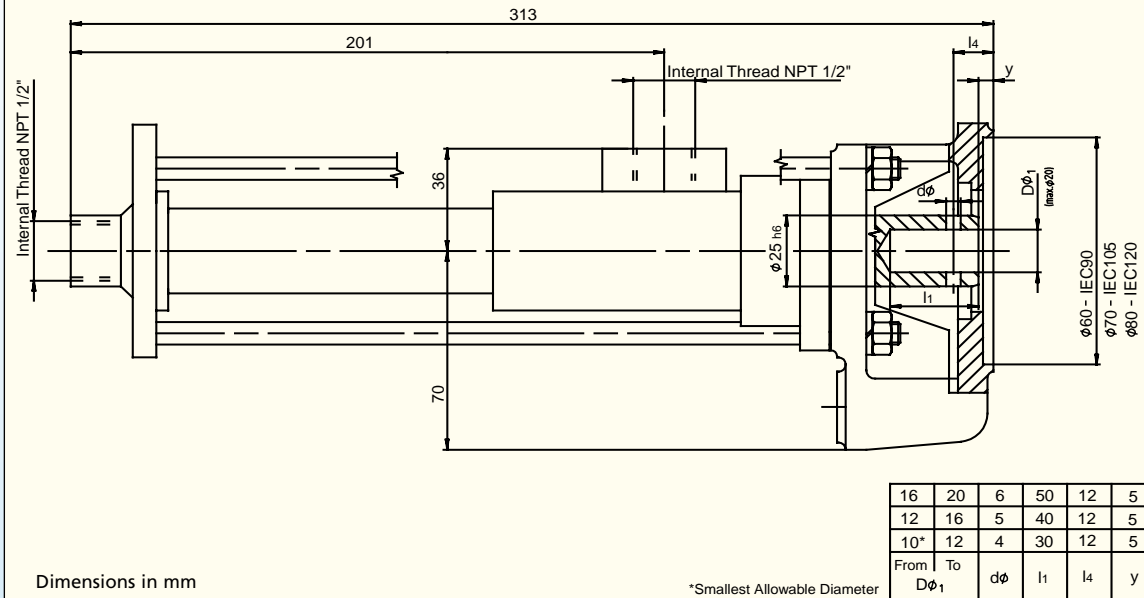
Combination of Two NEMO® Mini Metering Pumps



NM Mini Metering Pump with Bearing Housing



NM Mini Metering Pump (Block Design)



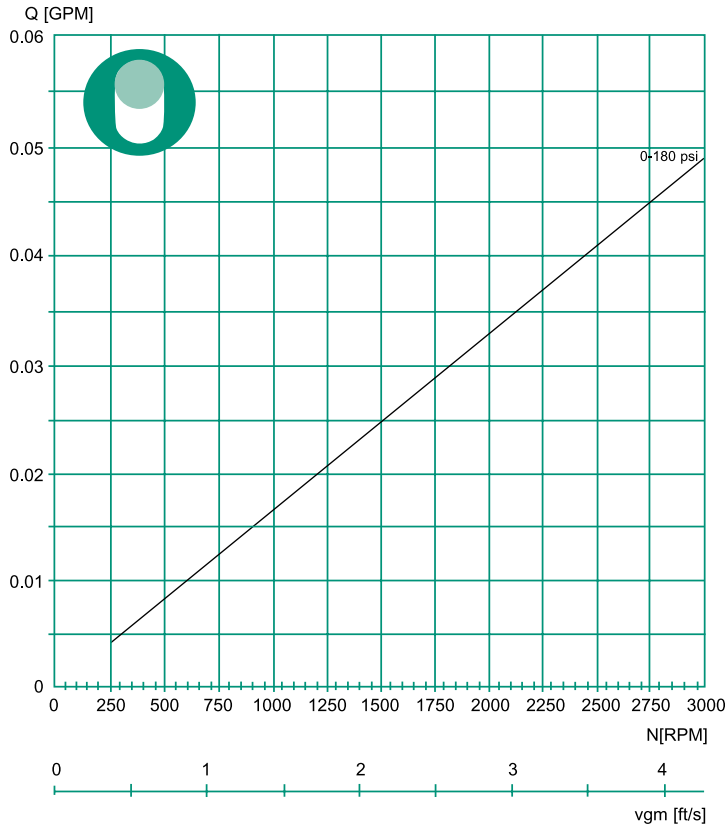
The **NM Mini Metering Pump** is a rotating positive displacement pump. The rotor has a single helix shape and is normally made of a metallic material. The stator is formed as a double-helix with twice the pitch of the rotor and is normally an elastomer.

The interference (compression) fit between the rotor and stator creates a series of sealed chambers called cavities. When the rotor turns inside the stator, the medium moves continuously from the inlet to the outlet of the cavities.

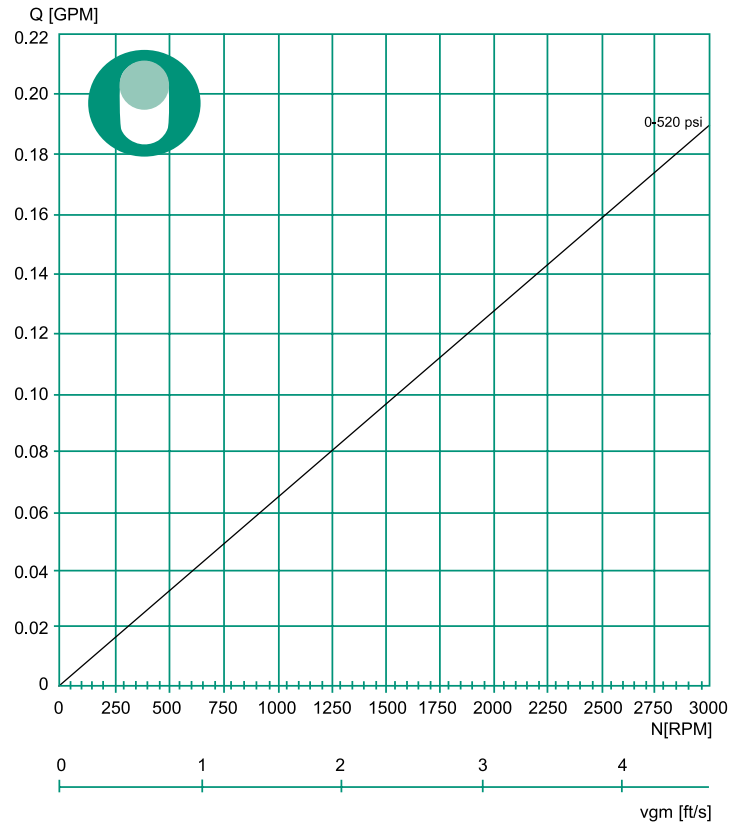
NETZSCH

Performance Curves for NM Mini Metering Pumps

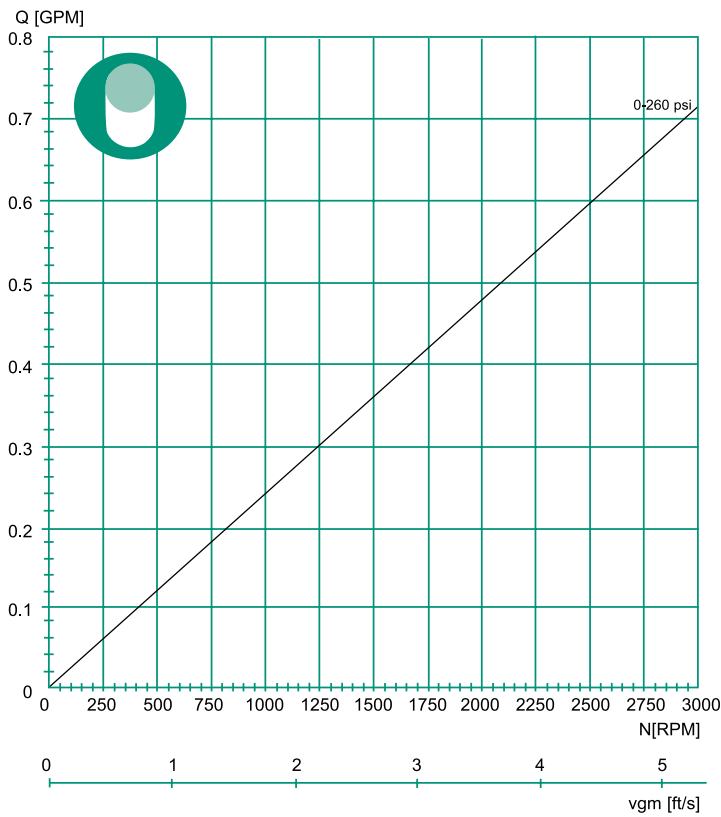
NM 003*11S



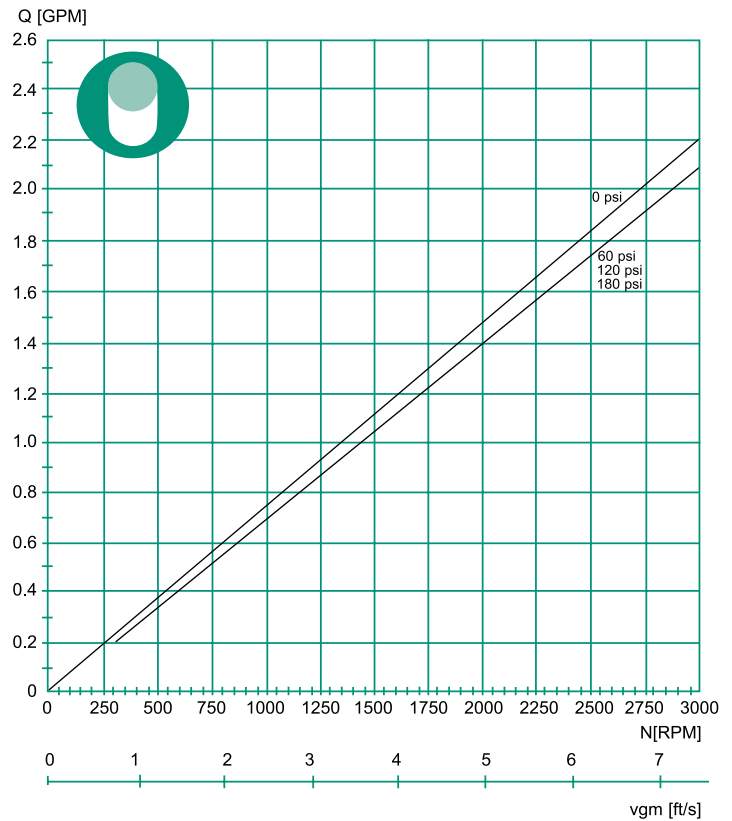
NM 005*6S



NM 008*3S



NM 011*2S



Data is based on water at 65°F. Use 0.5 HP as a minimum.

NETZSCH Incorporated and Worldwide Offices

NETZSCH Incorporated is the North American subsidiary of the globally operating group of NETZSCH companies and is one of the world's leading manufacturers of wet and dry grinding and dispersion equipment, progressing cavity pumps and filtration systems. The NETZSCH Group of companies has multinational manufacturing and sales facilities in more than 20 countries.

With access to comprehensive global resources in engineering and research and development, NETZSCH brings our customers the optimal benefits of our continually advancing technology. NETZSCH subscribes to recognized worldwide standards in quality certification and process control. Our full capabilities in the functional areas of

design, development, production, sales and service meet the highest demands established by the ISO 9001 International Quality Guidelines. Our customers rely on this commitment to deliver products of absolute reliability and exceptional quality.

Located in Exton, Pennsylvania, a western suburb of Philadelphia, our seven acre campus contains over 85,000 square feet with manufacturing, engineering, testing laboratories, marketing and corporate offices.

Our employees assist and service the far reaching requirements of our customers throughout North America.



NETZSCH Argentina S. A.
ARGENTINA



Gebrüder NETZSCH Maschinenfabrik
GmbH & Co. KG
NETZSCH Gerätebau GmbH
AUSTRIA



NETZSCH Feinmahltechnik
BELARUS



NETZSCH do Brazil
NETZSCH Service Nordeate Ltda
NETZSCH-AKW A&V
BRAZIL



NETZSCH LANZHOU PUMPS Co. Ltd.
NETZSCH Machinery & Instruments Co. Ltd.
CHINA



NETZSCH de Colombia
COLOMBIA



NETZSCH Frères S.a.r.l.
NETZSCH Feinmahltechnik GmbH
NETZSCH Gerätebau GmbH
NETZSCH Filtrationstechnik GmbH
FRANCE



Erich NETZSCH GmbH & Co. Holding KG
NETZSCH-CONDUX Mahltechnik GmbH
NETZSCH Elastomertechnik GmbH
NETZSCH Feinmahltechnik GmbH
NETZSCH Filtrationstechnik GmbH
NETZSCH Gerätebau GmbH
NETZSCH Mogendorf GmbH
NETZSCH Mohnopumpen GmbH
NETZSCH Oilfield Products GmbH
NETZSCH Werbe-und Service-GmbH
GERMANY



NETZSCH Mastermix Ltd.
NETZSCH NEMO® Pumps Ltd.
GREAT BRITAIN



NETZSCH India Private Ltd.
INDIA



NETZSCH Milantecnica S.r.l.
ITALY



HEISHIN-NETZSCH Co. Ltd.
JAPAN



NETZSCH Korea Co. Ltd.
KOREA



NETZSCH Biroul Tehnic
ROMANIA



Erich NETZSCH GmbH & Co. Holding KG
NETZSCH Gerätebau GmbH
ZAO GRP-Service
RUSSIA



NETZSCH ASIA PACIFIC PTE. Ltd.
SINGAPORE



JOCHMAN-NETZSCH
SPIS'SKÁ NOVÁ VES



NETZSCH España S.A.
SPAIN



NETZSCH S.A.
SWITZERLAND



NETZSCH (Thailand) Ltd.
THAILAND



NETZSCH Incorporated
U.S.A.



NETZSCH Representative
VIETNAM

NETZSCH Incorporated
119 Pickering Way Exton, PA 19341
Phone: 610.363.8010 Fax: 610.363.0971
nemopump@netzschusa.com
www.netzschusa.com
NIL 02 - 01 4/02 5M

NETZSCH

Incorporated