

TABLE OF CONTENTS



BENDING

OFFSET BENDERS	5
MECHANICAL BENDERS.....	6, 7
77 SERIES ELECTRIC BENDER.....	8, 9
77 SHOE GROUP ASSEMBLIES.....	10, 11
ELECTRIC PVC HEATERS.....	12, 13
PVC HEATING BLANKETS.....	14
PVC PLUGS AND ACCESSORIES	15
BENDING TABLES	16, 17
ELECTRIC PUMP.....	18

SAWING

BAND SAW.....	19
---------------	----

HOLEMAKING

MANUAL KNOCKOUT SETS.....	20
RATCHET KNOCKOUT SET	21
STRAIGHT AND 90° PUNCH DRIVER SETS.....	22, 23
PIECE MAKER™ KNOCKOUT SETS	24, 25
HEAVY DUTY PIECE MAKER™ SS KNOCKOUT SETS	26, 27
STANDARD KNOCKOUT SETS.....	28, 29
PUNCH AND DIE SET – 2 1/2" TO 4".....	30, 31
5" AND 6" PUNCH AND DIE.....	32
HAND PUMP AND HYDRAULIC HOSE for Knockout Sets.....	33
KNOCKOUT RAM.....	33
STUD PUNCH.....	34
KNOCKOUT PUNCH ACTUAL HOLE SIZE CHART	35



TABLE OF CONTENTS

CABLE PULLING

HIGH SPEED CABLE PULLER AND ACCESSORIES 36, 37

CABLE PULLER..... 38

MANTIS™ CABLE PULLING PACKAGES AND CARTS 39, 40, 41, 42

CABLE PULLER PACKAGE COMPONENT LISTING..... 43

MOBILE CABLE PULLER CART..... 44

CABLE PULLING PACKAGE ACCESSORIES 45

DOUBLE BRAIDED COMPOSITE ROPE 46

CABLE PULLING EXTRAS 47

REEL STANDS AND REEL ROLLERS

SCREW TYPE REEL STANDS..... 48

RATCHET TYPE REEL STAND 48

REEL STAND SPINDLES 49

REEL ROLLERS..... 50

LARGE CABLE REEL ROLLER 51

SHEAVES AND CABLE ROLLERS

HOOK TYPE SHEAVES..... 52

RIGHT ANGLE TWIN YOKE SHEAVE..... 53

TRAY TYPE SHEAVES 53

TRIANGLE SHEAVE CABLE GUIDE..... 54

CABLE FEEDING SHEAVES..... 54

RADIUS SHEAVES 55

MANHOLE SHEAVES..... 55

STRAIGHT CABLE ROLLERS..... 56

RADIUS CABLE ROLLERS..... 56

RIGHT ANGLE ROLLERS..... 57

FOUR-SIDED ROLLER 57



TABLE OF CONTENTS



WIRE CARTS

DOLLY CART	58
TURTLE CART	58
WIRE TREE	59
REEL DOLLY	59
ARMORED CABLE DISPENSER	60

CONDUIT STORAGE AND TRANSPORT

CONDUIT BUNDLER	61
CONDUIT RACK	61
PIPE/CONDUIT TRANSPORTER	62

CRIMPING TOOLS

DIE-TYPE CRIMPERS	63
REMOTE COMPRESSION HEADS	64, 65
REMOTE COMPRESSION HEAD PUMP	65

PULLING ACCESSORIES

LINE SWIVELS	66
WIRE GRIP SWIVELS	66
BREAKAWAY SWIVELS	67
BREAKAWAY PIN KITS	67
CAN-LINK CONNECTOR	68
ROPE TO SWIVEL CONNECTOR	68
PULLING HARNESES & KITS	69
INDIVIDUAL HARNESES	69
CLEVIS	69
PULLING GRIPS	70-75
LUBE SPREADERS	75
CONDUIT CHECKERS	76
SPIRAL CONDUIT BRUSHES	76



TABLE OF CONTENTS

STORAGE

STORAGE BOXES 77, 78
 CASTER SET 78

OTHER GOOD STUFF

CHAIN VISE STAND 79
 THREADER STANDS 80
 GENERAL PURPOSE POLY ROPE 81

REFERENCE

BEND RADIUS CHART 9
 ACTUAL HOLE SIZE CHART 35
 GRIP SELECTION CHART 70
 COMPARISON REFERENCE 82-96

*Please check with your local distributor for product updates as product specifications, materials, prices, availability, and terms of purchase are subject to change without notice. **Thank you***





Offset Benders

- Quick offset bends on EMT conduit
- Ideal for making consistent offset bends for wall mounted boxes
- Two models available for 1/2" EMT or 3/4" EMT conduit



Catalog Number	Description	Weight
705	1/2" EMT Offset Bender	5.0 lbs.
706	3/4" EMT Offset Bender	5.0 lbs.



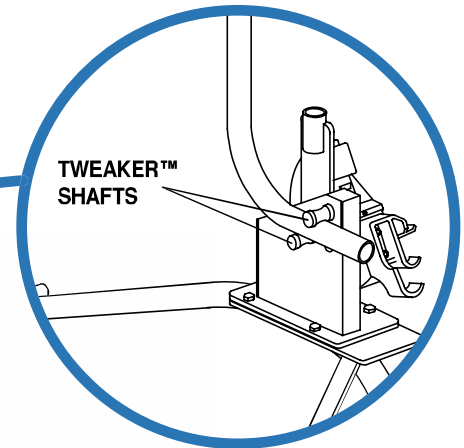
BENDING

Mechanical Bender

- Bends 1/2" to 1" RIGID/IMC conduit
- Heavy Duty, all metal construction for durability
- Ratchet action for ease in bending
- Model 750 has TWEAKER™ feature to correct overbends of 3° or less



with **TWEAKER™**



The TWEAKER™ feature allows the operator to correct overbends of 3° or less



Catalog Number	Description	Weight
750	1/2" to 1" Mechanical Bender for RIGID/IMC conduit	91 lbs.



Current Tools
FOR THE PROFESSIONAL ELECTRICIAN

www.currenttools.com

P.O. Box 17026 • Greenville, SC 29606 • 864.244.1201 • fax 864.244.5860 • 800.230.5421



Mechanical Bender

- Bends 1 1/4" and 1 1/2" RIGID/IMC conduit
- Heavy Duty, all metal construction for durability
- Ratchet action for ease in bending



Catalog Number	Description	Weight
751	1 1/4" and 1 1/2" Mechanical Bender for RIGID/IMC conduit	105 lbs.



BENDING

77 Series Electric Bender

- Powerful motor will make 180° bends on up to 2" rigid conduit
- Rugged and dependable electrical system
- Easy to maintain
- Handle pivots to allow for dogleg bends
- Shoes and roller support assemblies will fit Greenlee's® 555® electric bender*
- Two year warranty

To bend 1/2" thru 2" EMT, IMC, Rigid and 40 mil PVC coated conduit



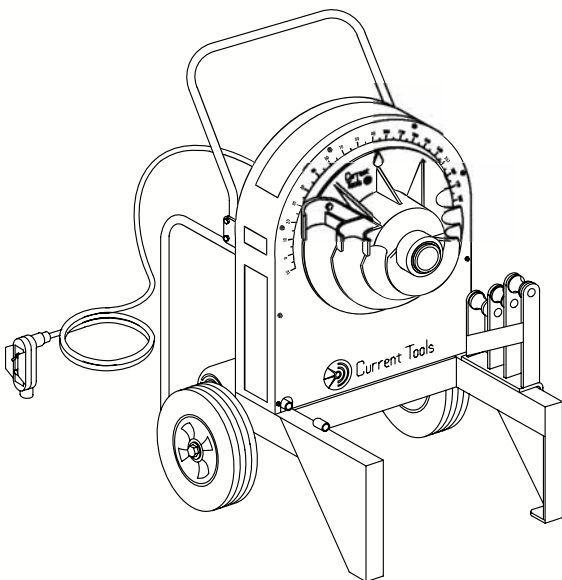
* Greenlee® and 555® are registered trademarks of Greenlee/Textron.





Catalog Number	Description	Weight
77	Electric Bender Power Source only (no shoes)	270
77RIG	Electric Bender with No. 700R Rigid shoes & accessories	365
77EMT	Electric Bender with No. 700E EMT shoes & accessories	430
77IMC	Electric Bender with No. 700I IMC shoes & accessories	410
77PVC	Electric Bender with No. 700P 40 mil PVC coated conduit bending shoes & accessories	365
77COM	Electric Bender with No. 700E, No. 700I, & 700R shoes & accessories (EMT, IMC & Rigid)	660

See pages 10 & 11 for shoe groups.



Bend Radius Chart

Size	EMT	IMC	Rigid
1/2"	4-1/4	4-3/8	4-3/8
3/4"	5-3/8	4-1/2	4-1/2
1"	6-3/4	5-3/4	5-3/4
1 1/4"	8-3/4	7-1/4	7-1/4
1 1/2"	8-9/32	8-9/32	8-1/4
2"	9-3/16	9-3/16	9-1/2

SPECIFICATIONS

Power Source

120 vac; 20 amp
GFCI protected
receptacle
required

Capacity

77RIG 1/2" to 2" Rigid conduit and
1/2" to 1 1/4" IMC conduit
77EMT 1/2" to 2" EMT conduit
77IMC 1 1/2" to 2" IMC conduit
77PVC 1/2" to 2" 40 mil PVC coated
conduit

Dimensions

Height: 42"
Width: 29.5"
Depth: 24.5"

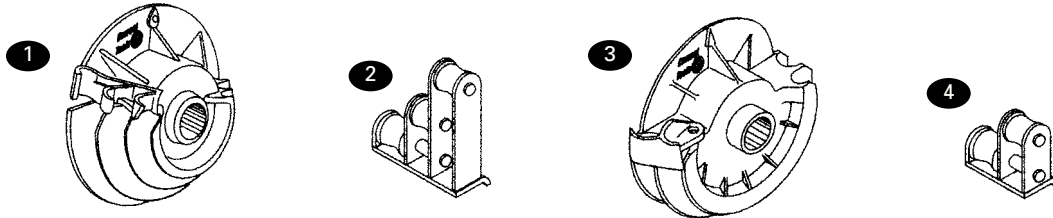




BENDING

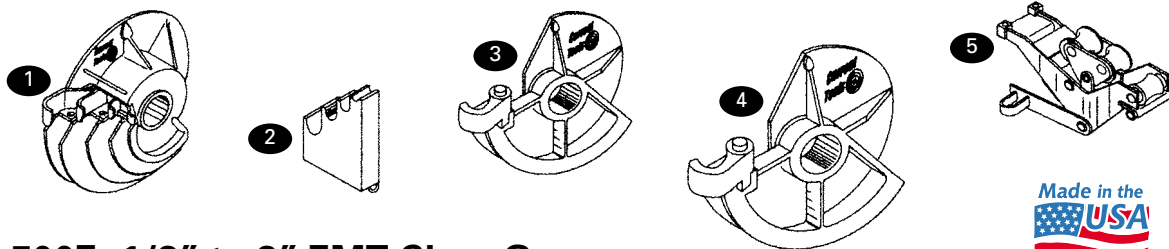
77 Shoe Group Assemblies

All shoes and roller supports will fit Greenlee® 555® Electric Bender*



700R 1/2" - 2" Rigid Shoe Group

Item Number	Catalog Number	Description	Weight
1	2-1301	1/2" - 1-1/4" Rigid and IMC bending shoe	23 lbs.
2	2-1001	1/2" - 1-1/4" Rigid and IMC support roller	8 lbs.
3	2-1401	1-1/2" and 2" Rigid bending shoe	37 lbs.
4	2-1002	1-1/2" and 2" Rigid support roller	6 lbs.



700E 1/2" to 2" EMT Shoe Group



Item Number	Catalog Number	Description	Weight
1	2-1501	1/2" - 1-1/4" EMT bending shoe	24 lbs.
2	2-1003	1/2" - 1-1/4" EMT support unit	6 lbs.
3	2-1601	1-1/2" EMT bending shoe	23 lbs.
4	2-1701	2" EMT bending shoe	31 lbs.
5	2-1100	1-1/2" - 2" EMT support roller unit	40 lbs.
not shown	8-0501	Metal storage box (see page 77.)	36 lbs.

700ES 1 1/2" to 2" EMT Shoe Group

Item Number	Catalog Number	Description	Weight
3	2-1601	1-1/2" EMT bending shoe	23 lbs.
4	2-1701	2" EMT bending shoe	31 lbs.
5	2-1100	1-1/2" - 2" EMT support roller unit	40 lbs.

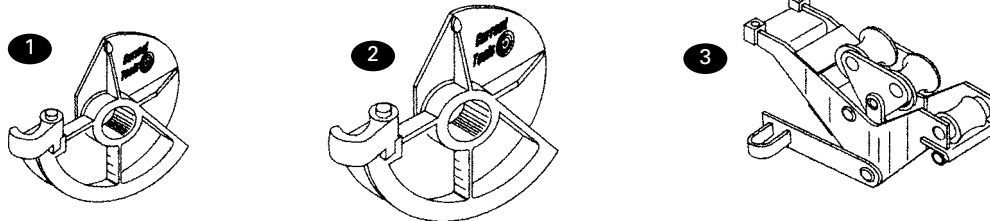
*Greenlee® and 555® are registered trademarks of Greenlee/Textron.





77 Shoe Group Assemblies

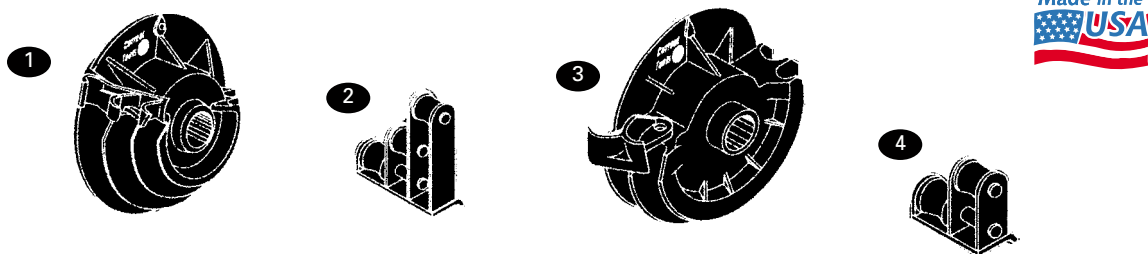
All shoes and roller supports will fit Greenlee® 555® Electric Bender*



700I 1 1/2" to 2" IMC Shoe Group

Item Number	Catalog Number	Description	Weight
1	2-1801	1-1/2" IMC bending shoe	22 lbs.
2	2-1901	2" IMC bending shoe	29 lbs.
3	2-1200	1-1/2" and 2" IMC support roller unit	40 lbs.
not shown	8-0501	Metal storage box (see page 77.)	36 lbs.

1/2" thru 1-1/4" IMC can be bent using small rigid shoe & roller support



700P 1/2" - 2" 40mil PVC Coated Rigid Shoe Group

Item Number	Catalog Number	Description	Weight
1	2-2001	1/2"- 1-1/4" PVC coated rigid bending shoe	23 lbs.
2	2-1004	1/2"- 1-1/4" PVC coated rigid support roller	8 lbs.
3	2-2101	1-1/2" and 2" PVC coated rigid bending shoe	37 lbs.
4	2-1005	1-1/2" and 2" PVC coated rigid support roller	6 lbs.
not shown	8-0501	Metal storage box (see page 77.)	36 lbs.

*Greenlee® and 555® are registered trademarks of Greenlee/Textron.



BENDING

450 PVC Heater for 1/2" – 2"

- Full length door allows easy loading and removal of PVC conduit
- Manual operation
- 115 vac-1700 watts - 15 amps
- Lighted ON/OFF switch
- Highly reflective interior for even heating
- Includes convenient carrying handle



Catalog Number	Description	Weight
450	Electric Heater for 1/2" - 2" PVC conduit Dimensions – 6 3/4" width x 9 1/4" height x 26 3/8" length	22 lbs.

451 PVC Heater for 1/2" – 4"

- Durable wheels for maximum mobility
- Full length door allows easy loading and removal of PVC conduit
- Manual operation
- 120 vac - 2300 watts - 20 amps
- Lighted ON/OFF switch
- Highly reflective interior for even heating.



Catalog Number	Description	Weight
451	Electric Heater for 1/2" - 4" PVC conduit Dimensions – 9" width x 12 3/4" height x 56 7/8" length	52 lbs.





452 PVC Heater for 1/2" – 6"

- Durable wheels for maximum mobility
- Double doors allow heating of shorter lengths of PVC conduit with one door open
- Manual Operation
- 230 vac - 6400 watts - 28 amps
- Power indicator light
- Stainless steel doors



Catalog Number	Description	Weight
452	Manual Electric Heater for 1/2" - 6" PVC conduit Dimensions – 12" width x 16 1/4" height x 79 1/4" length	77 lbs.

453 PVC Heater for 1/2" – 6" Auto Rotate

- Includes drive to automatically rotate the conduit for even heating
- Durable wheels for maximum mobility
- Double doors allow heating of shorter lengths of PVC conduit with one door open
- 230 vac - 6400 watts - 28 amps
- Power indicator light
- Stainless steel doors



Catalog Number	Description	Weight
453	Auto Rotate Electric Heater for 1/2" - 6" PVC conduit Dimensions – 12" width x 16 1/4" height x 79 1/4" length	87 lbs.



BENDING

PVC Heating Blankets

- Fast, economical way to heat PVC Conduit for bending
- Contains built-in stiffeners to hold blanket tightly against conduit surfaces
- Straps hold blanket in place while heating
- All models are 120 vac



Catalog Number	Description	Watts	Amps	Weight
441	PVC Heating Blanket for 1/2" to 1 1/2" Dimensions – 7 1/2" x 18"	300	2.50	1.5 lbs.
442	PVC Heating Blanket for 2" to 3" Dimensions – 11 1/4" x 25"	690	5.75	2 lbs.
443	PVC Heating Blanket for 3 1/2" to 4" Dimensions – 14 3/8" x 36"	1120	9.33	4 lbs.



Current Tools
FOR THE PROFESSIONAL ELECTRICIAN

www.currenttools.com

P.O. Box 17026 • Greenville, SC 29606 • 864.244.1201 • fax 864.244.5860 • 800.230.5421



PVC Plugs

- Plugs reduce heating time by trapping hot air inside PVC conduit
- Plugs help prevent conduit from collapsing while making the bend



PVC Plug Kits

Catalog Number	Description	Weight
460	2"-4" Plug Kit - Each size consists of 2 each plugs for 2" , 2 1/2" , 3" and 3 1/2" , 4"	4 lbs.
461	2"-6" Plug Kit - Each size consists of 2 each plugs for 2" , 2 1/2" , 3" and 3 1/2" , 4" , 5" , 6"	5 lbs.

Priced Individually

Catalog Number	Size	Weight
46-2	2"	.5 lb.
46-2.5	2 1/2"	.5 lb.
46-3	3" - 3-1/2"	.5 lb.
46-4	4"	1 lb.
46-5	5"	1 lb.
46-6	6"	1 lb.

PVC Heater Support Stand

- Supports PVC conduit while heating when using 452 or 453 PVC Heaters
- Height adjustment range 7 1/4" - 10"



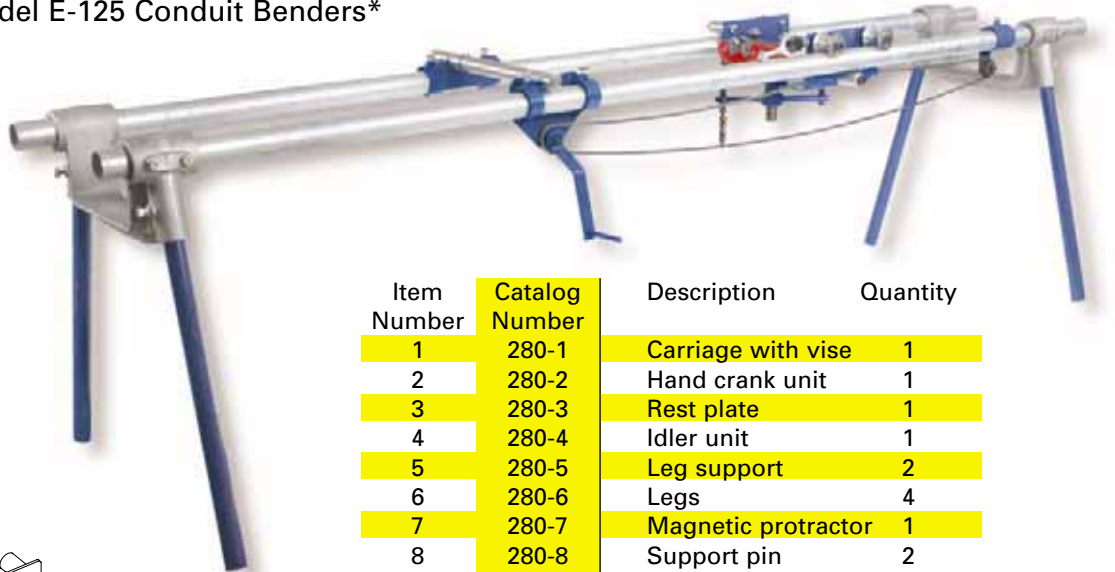
Catalog Number	Description	Weight
454	PVC Heater Support Stand	2 lbs.



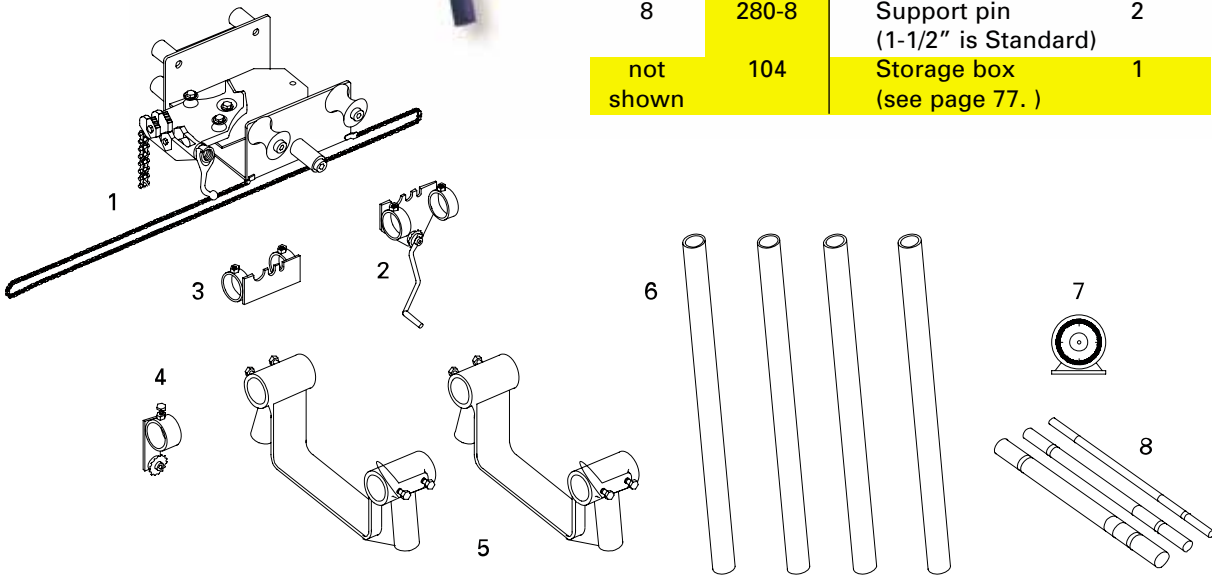
BENDING

280 Bending Table

- Keeps bender off of the floor and at a comfortable working height
- Fast, easy set-up
- Reduces operator fatigue
- For use with Greenlee® Models 885, 884, 883, 880, 777 and Ensley® Model E-125 Conduit Benders*



Item Number	Catalog Number	Description	Quantity
1	280-1	Carriage with vise	1
2	280-2	Hand crank unit	1
3	280-3	Rest plate	1
4	280-4	Idler unit	1
5	280-5	Leg support	2
6	280-6	Legs	4
7	280-7	Magnetic protractor	1
8	280-8	Support pin (1-1/2" is Standard)	2
not shown	104	Storage box (see page 77.)	1



Catalog Number	Description	Weight
280	280 Bending Table For use with Greenlee® No. 885, 884, 883, 880, 777 and Ensley® No. E-125 conduit benders	183 lbs.

* Greenlee® is a registered trademark of Greenlee/Textron. Ensley® is a registered trademark of Rothenberger Group.

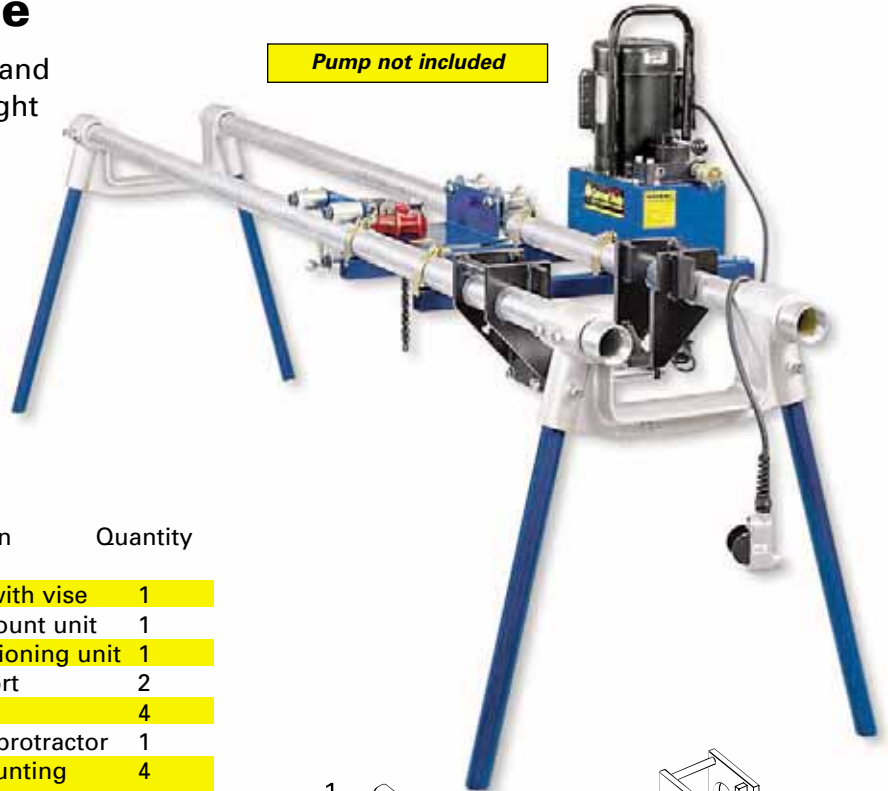


BENDING

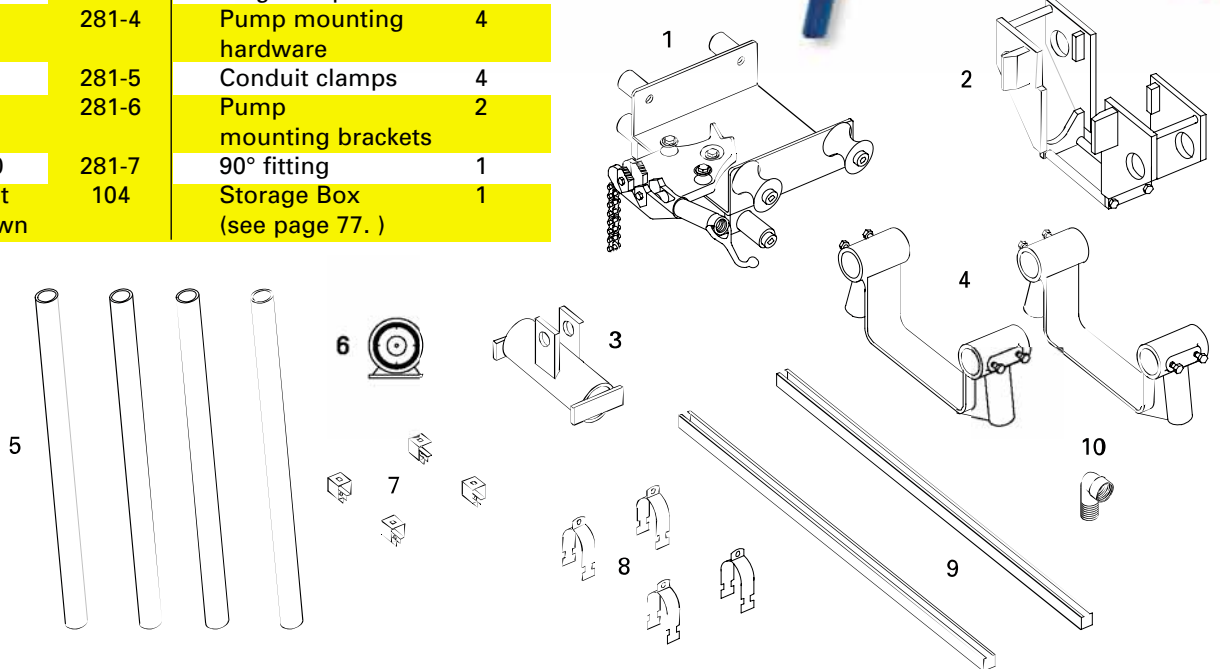


281 Bending Table

- Keeps bender off of the floor and at a comfortable working height
- Fast, easy set-up
- Reduces operator fatigue
- For use with Greenlee® Models 881 and 881 CamTrack® Benders*



Item Number	Catalog Number	Description	Quantity
1	281-1	Carriage with vise	1
2	281-2	Bender mount unit	1
3	281-3	Ram positioning unit	1
4	280-5	Leg support	2
5	280-6	Legs	4
6	280-7	Magnetic protractor	1
7	281-4	Pump mounting hardware	4
8	281-5	Conduit clamps	4
9	281-6	Pump mounting brackets	2
10	281-7	90° fitting	1
not shown	104	Storage Box (see page 77.)	1



Catalog Number	Description	Weight
281	281 Bending Table For use with Greenlee® No. 881 and 881 Cam Track® Benders	188 lbs.

* Greenlee® and Cam Track® are registered trademarks of Greenlee/Textron.

www.currenttools.com

P.O. Box 17026 • Greenville, SC 29606 • 864.244.1201 • fax 864.244.5860 • 800.230.5421

Current Tools
FOR THE PROFESSIONAL ELECTRICIAN





BENDING

Electric Pump

- Heavy duty design for long life
- Convenient pendant control for remote operation
- 2 speeds for fast ram advance
- For use with hydraulic benders



SPECIFICATIONS

- Power Requirement — 120 vac
 Capacity — 10,000 psi
 Oil Capacity — 2.5 gallons
 Volume — 500 cubic inches per min. (fast advance)
 — 46 cubic inches per min. (full pressure)



Catalog Number	Description	Weight
290	Heavy duty 1 1/2 HP electric/hydraulic pump	75 lbs.
291	optional – high pressure hose (not shown) 3/8" x 6' with 2 each 3/8" male couplers	2 lbs.





Band Saw

- Convertible (Horizontal/Vertical)
- Mobile Transfer System including:
Pull-out handle that automatically locks saw head assembly in "down" position plus a foot-actuated jacking lever to position wheels for easy mobility
- Vertical Work Table
- Stock Stop Assembly
- Ball Bearing Blade Guides
- Three-speed V-Belt Drive
- Blade Brush
- Under Voltage and Overload Protection
- Power Interruption Breaker Switch
- Precision Ground Bed
- Quick Acting Vice
- Adjustable Pressure Gravity Feed
- Auto Shutoff at Cut Completion
- Blade Guards



Catalog Number	Description	Weight
BSD95	Heavy Duty Band Saw	350 lbs.

SPECIFICATIONS

Capacity

Round	9 1/2"
Flat	11"
Rectangular	9 1/2" H x 11" W
45° angle.....	5.5" H x 5.5" W

Vertical Capacity

Throat Height	9.5"
Throat Depth.....	6.25"
Work Table.....	8" x 10"
Blade Size	1/2" x .025" x 7'9"
Blade speeds.....	76 -141 - 268 FPM
Blade Guides.....	Ball Bearing
Blade Tension	Manual Take-up
Motor, Blade Drive	1/2 HP, 115/60/1



HOLEMAKING

Manual Knockout Sets

158PM — 1/2" to 1 1/4"

159PM — 1 1/2" to 2"

- Features Piece Maker™ punches
- High strength steel punches and dies for long life
- Convenient storage case
- Designed to punch a maximum of 10 gauge (.134") mild steel
- Compare with Greenlee® Slug-Buster® Models 7235BB and 7237BB*



All items including punches & dies will fit Greenlee® Knockout Sets!



158PM

159PM

Catalog Number	Description	Weight
158PM	Manual Knockout Set – 1/2" to 1 1/4"	3 lbs.
159PM	Manual Knockout Set – 1 1/2" to 2"	5 lbs.

Catalog Number	Description	158PM	159PM
1524	1/2" Piece Maker™ Punch	1	–
1525	1/2" Die	1	–
1526	3/4" Piece Maker™ Punch	1	–
1527	3/4" Die	1	–
1528	1" Piece Maker™ Punch	1	–
1529	1" Die	1	–
1530	1 1/4" Piece Maker™ Punch	1	–
1531	1 1/4" Die	1	–
1532	1 1/2" Piece Maker™ Punch	–	1
1533	1 1/2" Die	–	1
1534	2" Piece Maker™ Punch	–	1
1535	2" Die	–	1
1557	Draw Bolt – 3/8" x 1 5/8"	1	–
1558	Draw Bolt – 3/4" x 2 15/16"	–	1
1559	Draw Bolt – 3/4" x 2 1/8"	1	–
1502	Case – 1/2" to 1 1/4" Set	1	–
1503	Case – 1 1/2" to 2" Set	–	1



Piece Maker™ Punches are designed to split the slug in two pieces for easy removal from die after punch completion

* Greenlee® and Slug-Buster® are registered trademarks of Greenlee/Extron.



Current Tools
FOR THE PROFESSIONAL ELECTRICIAN

www.currenttools.com

P.O. Box 17026 • Greenville, SC 29606 • 864.244.1201 • fax 864.244.5860 • 800.230.5421

HOLEMAKING



157PM Ratchet Knockout Set

- Features Piece Maker™ punches
- 1" hex ratchet wrench fits both 3/8" and 3/4" draw bolts
- Heavy duty plastic carrying case
- Designed to punch a maximum of 10 gauge (.134") mild steel
- Compare with Greenlee® Slug-Buster® Model 7238SB*



Piece Maker™ Punches are designed to split the slug in two pieces for easy removal from die after punch completion

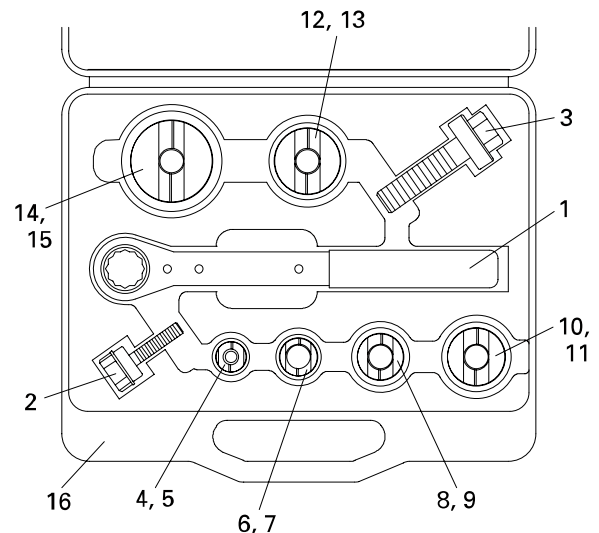


All items including punches & dies will fit Greenlee® Knockout Sets!



Catalog Number	Description	Weight
157PM	Ratchet Knockout Set 1/2" – 2"	9 lbs.

Item Number	Catalog Number	Qty	Description
1	1556	1	1" Ratchet Wrench
2	1557	1	Draw Bolt – 3/8" x 1 5/8"
3	1558	1	Draw Bolt – 3/4" x 2 15/16"
4	1524	1	1/2" Piece Maker™ Punch
5	1525	1	1/2" Die
6	1526	1	3/4" Piece Maker™ Punch
7	1527	1	3/4" Die
8	1528	1	1" Piece Maker™ Punch
9	1529	1	1" Die
10	1530	1	1 1/4" Piece Maker™ Punch
11	1531	1	1 1/4" Die
12	1532	1	1 1/2" Piece Maker™ Punch
13	1533	1	1 1/2" Die
14	1534	1	2" Piece Maker™ Punch
15	1535	1	2" Die
16	157-PC	1	Plastic Case



* Greenlee® and Slug-Buster® are registered trademarks of Greenlee/Textron.

www.currenttools.com

P.O. Box 17026 • Greenville, SC 29606 • 864.244.1201 • fax 864.244.5860 • 800.230.5421

Current Tools 
FOR THE PROFESSIONAL ELECTRICIAN



HOLEMAKING

Hydraulic Punch Driver Sets — Straight and 90°

- Designed to punch a maximum of 10 gauge (.134") mild steel up to 2" and 10 gauge (.134") stainless steel up to 1 1/4"
- Designed to split the slug into two pieces for easy removal
- High strength steel punches and dies for long life
- Requires less force than conventional punches
- 90° punch driver incorporates rotating head for numerous operating positions
- Compare with Greenlee® Quick Draw® Models 7806SB and 7906SB*



Piecemaker™ Punches are designed to split the slug into two pieces for easy removal from die after punch completion



All items including punches & dies will fit Greenlee® Knockout Sets!

NEW



Model 170PM
Straight Punch Driver Set

NEW



Model 179PM
90° Punch Driver Set

Catalog Number	Description	Weight
170PM	1/2" to 2" Straight Hydraulic Punch Driver Set	16 lbs.
179PM	1/2" to 2" 90° Hydraulic Punch Driver Set	17 lbs.

* Greenlee® and Quick Draw® are registered trademarks of Greenlee/Extron.



Current Tools
FOR THE PROFESSIONAL ELECTRICIAN

www.currenttools.com

P.O. Box 17026 • Greenville, SC 29606 • 864.244.1201 • fax 864.244.5860 • 800.230.5421



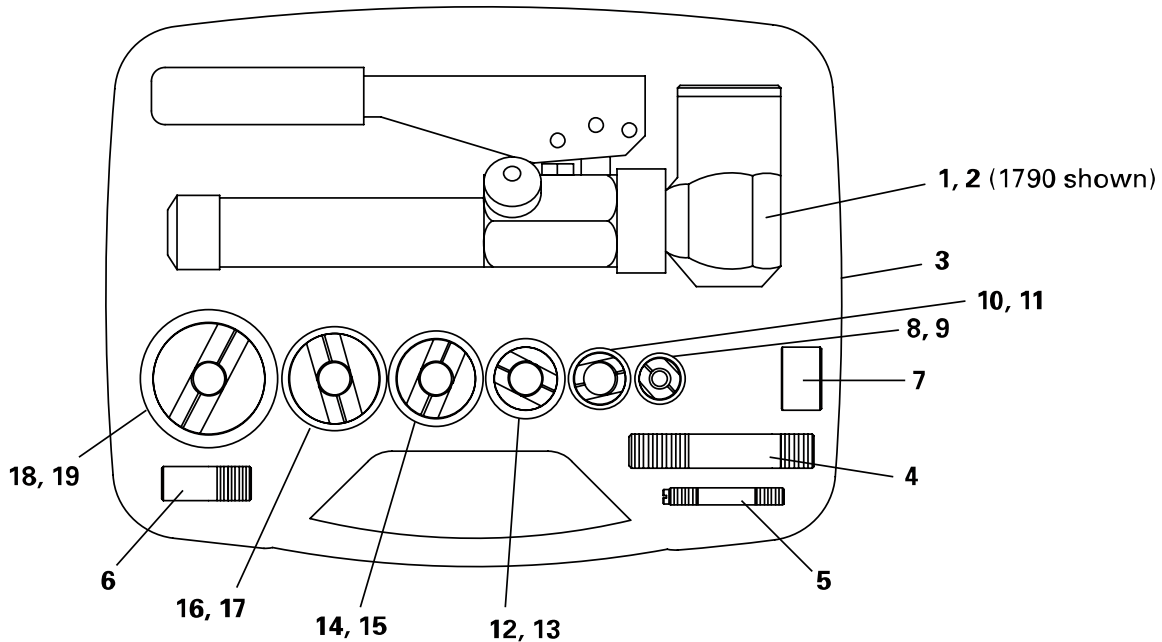
Hydraulic Punch Driver Sets — Straight and 90°

NEW

Item Number	Catalog Number	Description	#170	#170PM	#179	#179PM
1	1700	Punch Driver – Straight	1	1		
2	1790	Punch Driver – 90°			1	1
3	1701	Plastic Case	1	1	1	1
4	1702	3/4" x 4 1/8" Draw Stud	1	1	1	1
5	1550	3/8" Draw Stud	1	1	1	1
6	1703	Adapter Stud	1	1	1	1
7	1553	Short Spacer – S	1	1	1	1
8	1524	1/2" Piece Maker™ Punch		1		1
9	1525	1/2" Die		1		1
10	1526	3/4" Piece Maker™ Punch		1		1
11	1527	3/4" Die		1		1
12	1528	1" Piece Maker™ Punch		1		1
13	1529	1" Die		1		1
14	1530	1 1/4" Piece Maker™ Punch		1		1
15	1531	1 1/4" Die		1		1
16	1532	1 1/2" Piece Maker™ Punch		1		1
17	1533	1 1/2" Die		1		1
18	1534	2" Piece Maker™ Punch		1		1
19	1535	2" Die		1		1



Piece Maker™ Punches are designed to split the slug into two pieces for easy removal from die after punch completion





HOLEMAKING

Piece Maker™ Knockout Sets

- Designed to split the slug in two pieces for easy removal
- Requires less force than conventional punches
- Fast set-up
- High-strength steel punches and dies for long life
- Reduces punch time versus manual or ratchet methods
- Unique hand pump design with heavy duty ram
- Designed to punch a maximum of 10 gauge (.134") mild steel
- Compare with Greenlee® Slug-Buster® Models 7306SB and 7310SB*

All items including punches & dies will fit Greenlee® Knockout Sets!



Piece Maker™ Punches are designed to split the slug in two pieces for easy removal from die after punch completion



Model 152PM

Catalog Number	Description	Weight
152PM	1/2" – 2" Piece Maker™ Hydraulic Knockout Set	29 lbs.
154PM	1/2" – 4" Piece Maker™ Hydraulic Knockout Set	54 lbs.

* Greenlee® and Slug-Buster® are registered trademarks of Greenlee/Textron.



Current Tools
FOR THE PROFESSIONAL ELECTRICIAN

www.currenttools.com

P.O. Box 17026 • Greenville, SC 29606 • 864.244.1201 • fax 864.244.5860 • 800.230.5421

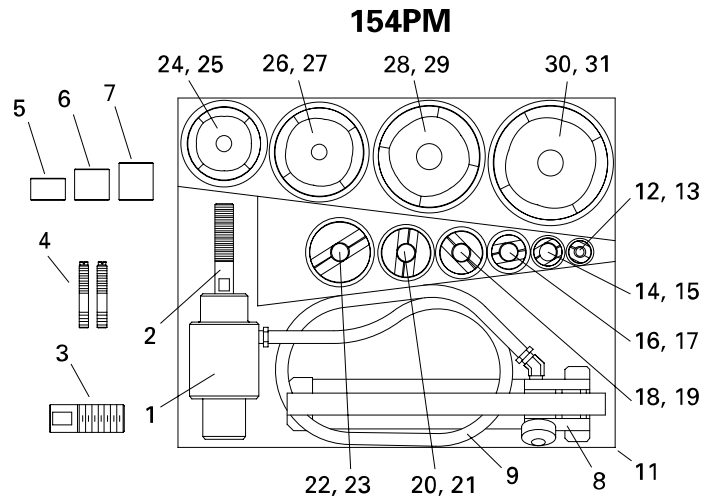
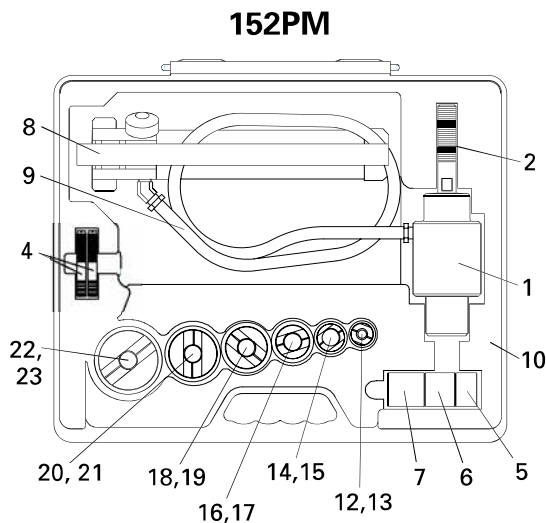


Piece Maker™ Knockout Sets

Item Number	Catalog Number	Description	#152PM 1/2" to 2"	#154PM 1/2" to 4"
1	1522	Ram (Includes #2)	1	1
2	1551	3/4" Draw Stud	1	1
3	1552	1 1/8" Adapter Sleeve		1
4	1550	3/8" Draw Stud	2	2
5	1553	Short Spacer - S	1	1
6	1554	Medium Spacer - M	1	1
7	1555	Long Spacer - L	1	1
8	1521	Hydraulic Hand Pump	1	1
9	1523	1/4" x 3' Hydraulic Hose	1	1
10	1500-PC	Plastic Carrying Case -1/2" to 2" Set	1	
11	1501	Metal Carrying Case -1/2" to 4" Set		1
12	1524	1/2" Piece Maker™ Punch	1	1
13	1525	1/2" Die	1	1
14	1526	3/4" Piece Maker™ Punch	1	1
15	1527	3/4" Die	1	1
16	1528	1" Piece Maker™ Punch	1	1
17	1529	1" Die	1	1
18	1530	1 1/4" Piece Maker™ Punch	1	1
19	1531	1 1/4" Die	1	1
20	1532	1 1/2" Piece Maker™ Punch	1	1
21	1533	1 1/2" Die	1	1
22	1534	2" Piece Maker™ Punch	1	1
23	1535	2" Die	1	1
24	1566	2 1/2" Punch		1
25	1567	2 1/2" Die		1
26	1568	3" Punch		1
27	1569	3" Die		1
28	1570	3 1/2" Punch		1
29	1571	3 1/2" Die		1
30	1572	4" Punch		1
31	1573	4" Die		1
—	155-SET	Spacer Set S-M-L		



Piece Maker™ Punches are designed to split the slug in two pieces for easy removal from die after punch completion





HOLEMAKING

Heavy Duty Piece Maker™ SS Knockout Sets for Stainless Steel

- Punch holes in 16 gauge to 10 gauge stainless steel
- Designed to split the slug into two pieces for easy removal
- Punches are manufactured from tool steel for high strength and long life
- Requires less force than conventional punches
- Compare with Greenlee® Slug-Splitter® Models 7307 and 7506*



Piece Maker™ SS Punches are designed to split the slug into two pieces for easy removal from die after punch completion



All items including punches & dies will fit Greenlee® SLUG-SPLITTER®!



Model 160SS



Model 161SS

Catalog Number	Description	Weight
160SS	1/2" to 2" Heavy Duty Piece Maker™ SS Knockout Set for Stainless Steel	11 lbs.
161SS	1/2" to 2" Heavy Duty Piece Maker™ SS Hydraulic Knockout Set for Stainless Steel	33 lbs.

* Greenlee® and Slug-Splitter® are registered trademarks of Greenlee/Textron.



Current Tools
FOR THE PROFESSIONAL ELECTRICIAN

www.currenttools.com

P.O. Box 17026 • Greenville, SC 29606 • 864.244.1201 • fax 864.244.5860 • 800.230.5421

HOLEMAKING

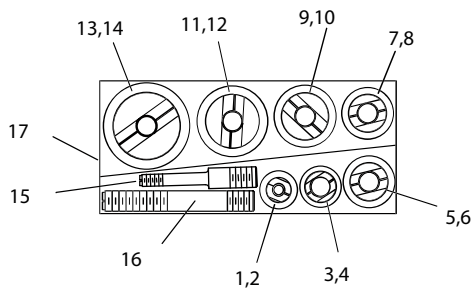


Heavy Duty Piece Maker™ SS Knockout Sets

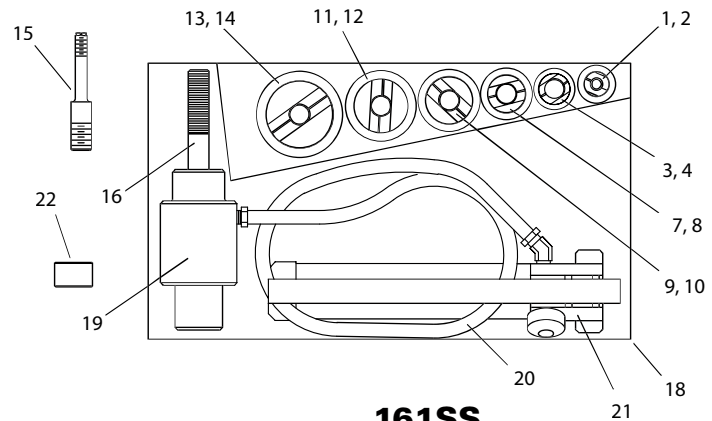
Item Number	Catalog Number	Description	#160SS	#161SS
1	1536	1/2" SS Punch	1	1
2	1537	1/2" SS Die	1	1
3	1538	3/4" SS Punch	1	1
4	1539	3/4" SS Die	1	1
5	1540	1 7/32" SS Punch	1	
6	1541	1 7/32" SS Die	1	
7	1542	1" SS Punch	1	1
8	1543	1" SS Die	1	1
9	1544	1 1/4" SS Punch	1	1
10	1545	1 1/4" SS Die	1	1
11	1546	1 1/2" SS Punch	1	1
12	1547	1 1/2" SS Die	1	1
13	1548	2" SS Punch	1	1
14	1549	2" SS Die	1	1
15	1574	3/4" - 7/16" x 4 1/4" SS Draw Stud	1	1
16	1575	3/4" x 5 1/2" SS Draw Stud	1	1
17	1600	Metal Case - 160SS	1	
18	1500	Metal Case - 161SS		1
19	1522	Ram		1
20	1523	1/4" x 3' Hydraulic Hose		1
21	1521	Hydraulic Hand Pump		1
22	1553	Spacer - S		1



Piece Maker™ SS Punches are designed to split the slug into two pieces for easy removal from die after punch completion



160SS



161SS



HOLEMAKING

Standard Knockout Sets

- 4 point punch design for easy slug removal
- Fast set-up
- High strength steel punches and dies for long life
- Reduces punch time versus manual or ratchet methods
- Unique hand pump design with heavy duty ram
- Designed to punch a maximum of 10 gauge (.134") mild steel
- Compare with Greenlee® Models 7306 and 7310*



All items including punches & dies will fit Greenlee® Knockout Sets!



Model 154

Catalog Number	Description	Weight
152	1/2" – 2" Standard Hydraulic Knockout Set	29 lbs.
154	1/2" – 4" Standard Hydraulic Knockout Set	54 lbs.

* Greenlee® is a registered trademark of Greenlee/Textron.



Current Tools
FOR THE PROFESSIONAL ELECTRICIAN

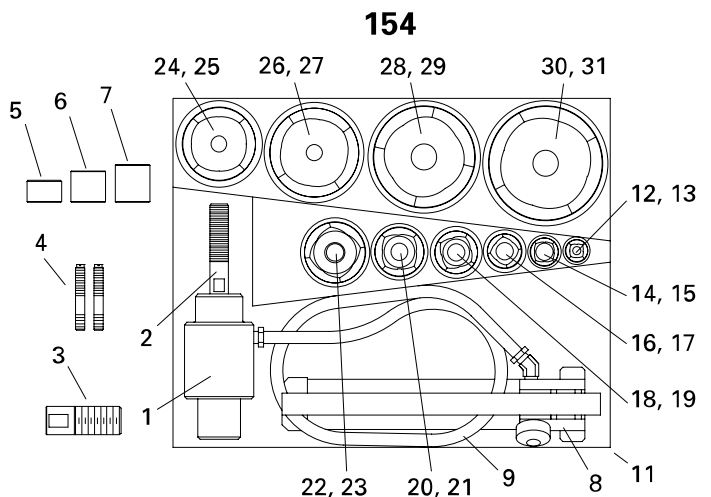
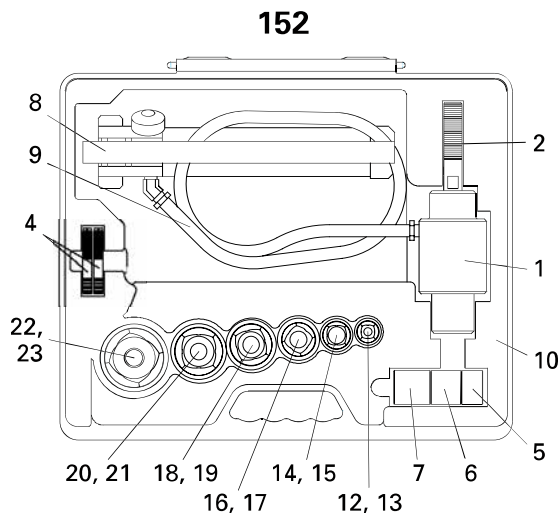
www.currenttools.com

P.O. Box 17026 • Greenville, SC 29606 • 864.244.1201 • fax 864.244.5860 • 800.230.5421



Standard Knockout Sets

Item Number	Catalog Number	Description	#152 1/2" to 2"	#154 1/2" to 4"
1	1522	Ram (Includes #2)	1	1
2	1551	3/4" Draw Stud	1	1
3	1552	1 1/8" Adapter		1
4	1550	3/8" Draw Stud	2	2
5	1553	Short Spacer - S	1	1
6	1554	Medium Spacer - M	1	1
7	1555	Long Spacer - L	1	1
8	1521	Hydraulic Hand Pump	1	1
9	1523	1/4" x 3' Hydraulic Hose	1	1
10	1500-PC	Plastic Carrying Case -1/2" to 2" Set	1	
11	1501	Metal Carrying Case -1/2" to 4" Set		1
12	1560	1/2" Standard Punch	1	1
13	1525	1/2" Die	1	1
14	1561	3/4" Standard Punch	1	1
15	1527	3/4" Die	1	1
16	1562	1" Standard Punch	1	1
17	1529	1" Die	1	1
18	1563	1 1/4" Standard Punch	1	1
19	1531	1 1/4" Die	1	1
20	1564	1 1/2" Standard Punch	1	1
21	1533	1 1/2" Die	1	1
22	1565	2" Standard Punch	1	1
23	1535	2" Die	1	1
24	1566	2 1/2" Punch		1
25	1567	2 1/2" Die		1
26	1568	3" Punch		1
27	1569	3" Die		1
28	1570	3 1/2" Punch		1
29	1571	3 1/2" Die		1
30	1572	4" Punch		1
31	1573	4" Die		1
—	155-SET	Spacer Set S-M-L		





HOLEMAKING

Knockout Punch and Die Set

156 — 2 1/2" to 4"

- 4 point punch design for easy slug removal
- fast set-up
- high strength steel punches and dies for long life
- reduces punch time versus manual or ratchet method
- designed to punch a maximum of 10 gauge (.134") mild steel
- Compare with Greenlee® Model 7304

All items including punches & dies will fit Greenlee® Knockout Sets!



Catalog Number	Description	Weight
156	2 1/2" – 4" Knockout Punch and Die Set	25 lbs.

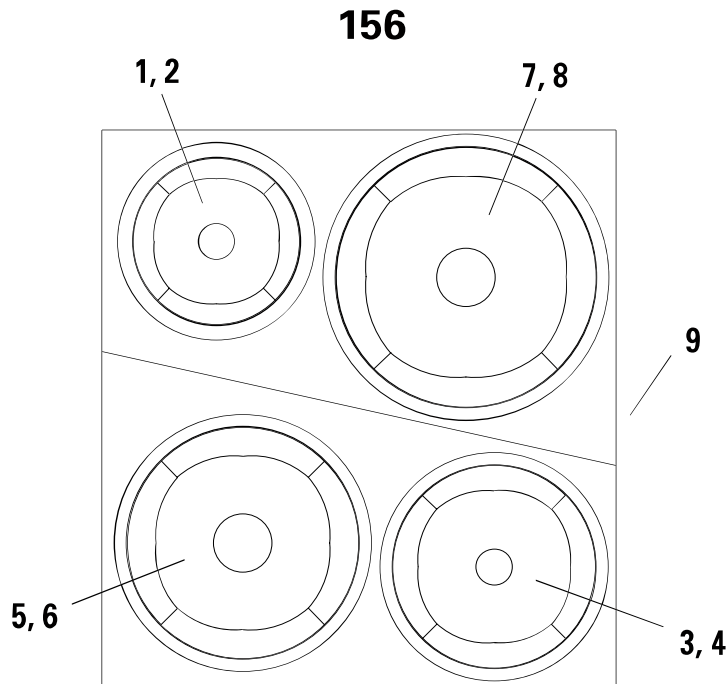
* Greenlee® is a registered trademark of Greenlee/Textron.





Knockout Punch and Die Set 156 — 2 1/2" to 4"

Item Number	Catalog Number	Qty	Description
1	1566	1	2 1/2" Punch
2	1567	1	2 1/2" Die
3	1568	1	3" Punch
4	1569	1	3" Die
5	1570	1	3 1/2" Punch
6	1571	1	3 1/2" Die
7	1572	1	4" Punch
8	1573	1	4" Die
9	1504	1	Metal Storage Box





HOLEMAKING

5" and 6" Punch and Die

- 4 point punch design for easy slug removal
- Designed to punch a maximum of 10 gauge (.134) mild steel
- High strength steel punches and dies for long life
- For use with hand pump



All items including punches & dies will fit Greenlee® Knockout Sets!

NEW



Catalog Number	Description	Weight
1576	5" Punch	6 lbs.
1577	5" Die	6.5 lbs.
1578	6" Punch	9 lbs.
1579	6" Die	10.5 lbs.
1580	Draw Stud – 3/4" x 1 1/8" x 5 3/4" long	0.5 lb.



Current Tools
FOR THE PROFESSIONAL ELECTRICIAN

www.currenttools.com

P.O. Box 17026 • Greenville, SC 29606 • 864.244.1201 • fax 864.244.5860 • 800.230.5421



Hand Pump and Hydraulic Hose for Knockout Sets

- Unique stainless steel and aluminum construction for light weight and rugged use
- Operates in any position
- 6,500 PSI (max) pressure
- For use ONLY with Hydraulic Knockout Sets & Cable Cutters



SPECIFICATIONS

- Oil Capacity — 16 cu. in.
- Oil Volume — .069 cu. in. per stroke

Knockout Ram

- Will fit Greenlee® punches and dies*
- Proven heavy duty design
- For use only with 6,500 PSI maximum hand pumps



Catalog Number	Description	Weight
1521	6,500 PSI (max) hydraulic hand pump Dimensions – 2 7/8" width x 3 7/8" height x 12 3/4" length	4.7 lbs.
1522	Hydraulic Knockout Ram Dimensions – 5 3/4" length x 2 7/8" diameter	6 lbs.
1523	1/4" x 3' Hydraulic Hose — 1/4" NPT male fittings both ends, one end swivels	1 lb.

* Greenlee® is a registered trademark of Greenlee/Textron.



HOLEMAKING

Stud Punch

- Punches steel studs up to 20 gauge
- Self-clearing mechanism to help avoid punch hang-up
- Handle designed to allow for tight clearances
- Self-centering on standard width studs
- Lightweight aluminum body



Catalog Number	Description	Weight
140	Stud Punch – 7/8" hole Capacity – Minimum stud width 1 5/8" – Up to 20 gauge steel studs	6.5 lbs.
141	Stud Punch – 1 11/32" hole Capacity – Minimum stud width 2 1/2" – Up to 20 gauge steel studs	7.0 lbs.

* Greenlee® is a registered trademark of Greenlee/Extron.



Current Tools
FOR THE PROFESSIONAL ELECTRICIAN

www.currenttools.com

P.O. Box 17026 • Greenville, SC 29606 • 864.244.1201 • fax 864.244.5860 • 800.230.5421



Knockout Punches Actual Hole Size Chart

Catalog Number		Punch and Conduit Size	Actual Punched Hole Diameter (in.)
Standard	Piece Maker™		
1560	1524	1/2"	.885
1561	1526	3/4"	1.115
1562	1528	1"	1.362
1563	1530	1 1/4"	1.701
1564	1532	1 1/2"	1.948
1565	1534	2"	2.415
1566	-	2 1/2"	2.910
1568	-	3"	3.545
1570	-	3 1/2"	4.048
1572	-	4"	4.550
1576	-	5"	5.660
1578	-	6"	6.750

Notes



CABLE PULLING

High Speed Cable Puller

- Rolling base for easy mobility around jobsite
- Folds for compact transport and storage
- Quick release conduit couplings
- Integral heavy duty two speed motor
- Permanently lubricated vent free gearbox
- Integral foot switch
- Lightweight – Less than 70 lbs.
- 3,000 lb. pulling force
- Complete system – no extra parts to purchase
- Compare to Greenlee® Model #UT2



NEW



Catalog Number	Description	Weight
33	High Speed Cable Puller – 3000 lb. Capacity	70 lbs.

* Greenlee® and Ultra tigger® are registered trademarks of Greenlee/Extron.



Current Tools
FOR THE PROFESSIONAL ELECTRICIAN

www.currenttools.com

P.O. Box 17026 • Greenville, SC 29606 • 864.244.1201 • fax 864.244.5860 • 800.230.5421

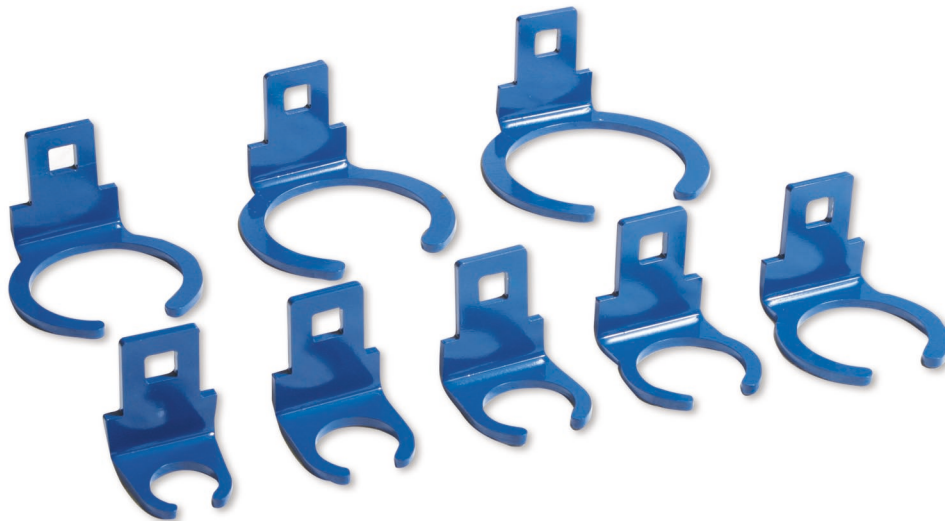


High Speed Cable Puller Accessories

Catalog Number	Description	Weight
33-56	1" Conduit coupling	.3 lbs.
33-57	1 1/4" Conduit coupling	.4 lbs.
33-58	1 1/2" Conduit coupling	.5 lbs.
33-59	2" Conduit coupling	.6 lbs.
33-60	2 1/2" Conduit coupling	.8 lbs.
33-61	3" Conduit coupling	.9 lbs.
33-62	3 1/2" Conduit coupling	1.0 lbs.
33-63	4" Conduit coupling	1.1 lbs.



NEW





CABLE PULLING

Cable Puller

- Heavy duty unitized construction
- Built in force gauge
- No tools required for set-up
- Right angle roller for operator safety
- Circuit breaker to protect puller motor
- Tapered capstan for rope alignment and to help avoid rope overlap



See Page 43 For Complete Package Component Listing.



Cable Puller – 8,000 lb. Maximum Pulling Force

Catalog Number	Description	Weight
88	Cable Puller with chains	101 lbs.
8845	Cable Puller with chains and floor mount	125 lbs.



Current Tools
FOR THE PROFESSIONAL ELECTRICIAN

www.currenttools.com

P.O. Box 17026 • Greenville, SC 29606 • 864.244.1201 • fax 864.244.5860 • 800.230.5421



Mantis™ Mobile Cable Pulling Package

- Excellent Mobility
- Easy set-up
- Transport without complete disassembly
- Pulls up to 20' extra cable
- 8,000# capacity
- Fits through 32" doorway
- Will fit Greenlee® Model 6001 Super Tugger® and 640 Tugger®



See Page 43 For Complete Package Component Listing.



Catalog Number	Description	Weight
8890A	Mantis™ Mobile Cable Pulling Package w/Model 88 Cable Puller	745 lbs.

* Greenlee®, Super Tugger®, and Tugger® are registered trademarks of Greenlee/Textron.

www.currenttools.com

P.O. Box 17026 • Greenville, SC 29606 • 864.244.1201 • fax 864.244.5860 • 800.230.5421

Current Tools 
FOR THE PROFESSIONAL ELECTRICIAN



CABLE PULLING

Mantis™ Mobile Cable Pulling Cart

- Excellent Mobility
- Easy set-up
- Transport without complete disassembly
- Pulls up to 20' extra cable
- 8,000# capacity
- Fits through 32" doorway
- Will fit Greenlee® Model 6001 Super Tugger® and 640 Tugger®



See Page 43 For Complete Package Component Listing.



Catalog Number	Description	Weight
8090	Mantis™ Mobile Cable Pulling Carriage w/two Boom sections	355 lbs.

* Greenlee®, Super Tugger®, and Tugger® are registered trademarks of Greenlee/Extron.



Current Tools
FOR THE PROFESSIONAL ELECTRICIAN

www.currenttools.com

P.O. Box 17026 • Greenville, SC 29606 • 864.244.1201 • fax 864.244.5860 • 800.230.5421



Mantis™ Mobile Cable Pulling Package - Basic

- Excellent Mobility
- Easy set-up
- Transport without complete disassembly
- Pulls up to 10' extra cable
- 8,000# capacity
- Fits through 32" doorway
- Will fit Greenlee® Model 6001 Super Tugger® and 640 Tugger®



See Page 43 For Complete Package Component Listing.



Catalog Number	Description	Weight
8885	Mantis™ Cable Puller Package — Basic	346 lbs.

* Greenlee®, Super Tugger®, and Tugger® are registered trademarks of Greenlee/Textron.

www.currenttools.com

P.O. Box 17026 • Greenville, SC 29606 • 864.244.1201 • fax 864.244.5860 • 800.230.5421

Current Tools
FOR THE PROFESSIONAL ELECTRICIAN





CABLE PULLING

Mantis™ Mobile Cable Pulling Cart - Basic

- Excellent Mobility
- Easy set-up
- Transport without complete disassembly
- 8,000# capacity
- Fits through 32" doorway
- Will fit Greenlee® Model 6001 Super Tugger® and 640 Tugger®
- Compare to Greenlee® Model # 11147 Mobile Cart



See Page 43 For Complete Package Component Listing.

Catalog Number	Description	Weight
8085	Mantis™ Mobile Cable Pulling Carriage w/one Boom section	280 lbs.

* Greenlee®, Super Tugger®, and Tugger® are registered trademarks of Greenlee/Extron.

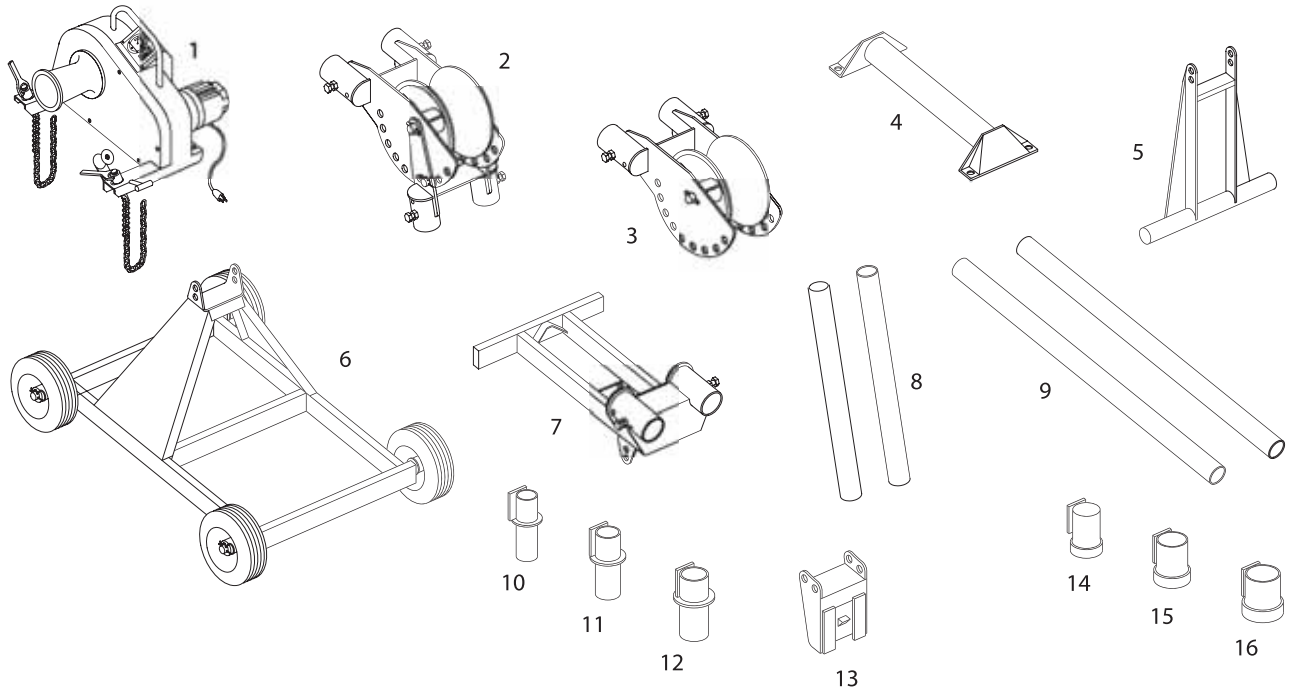


Current Tools
FOR THE PROFESSIONAL ELECTRICIAN

www.currenttools.com
P.O. Box 17026 • Greenville, SC 29606 • 864.244.1201 • fax 864.244.5860 • 800.230.5421



Component Listings – Mantis™ Cable Puller Packages



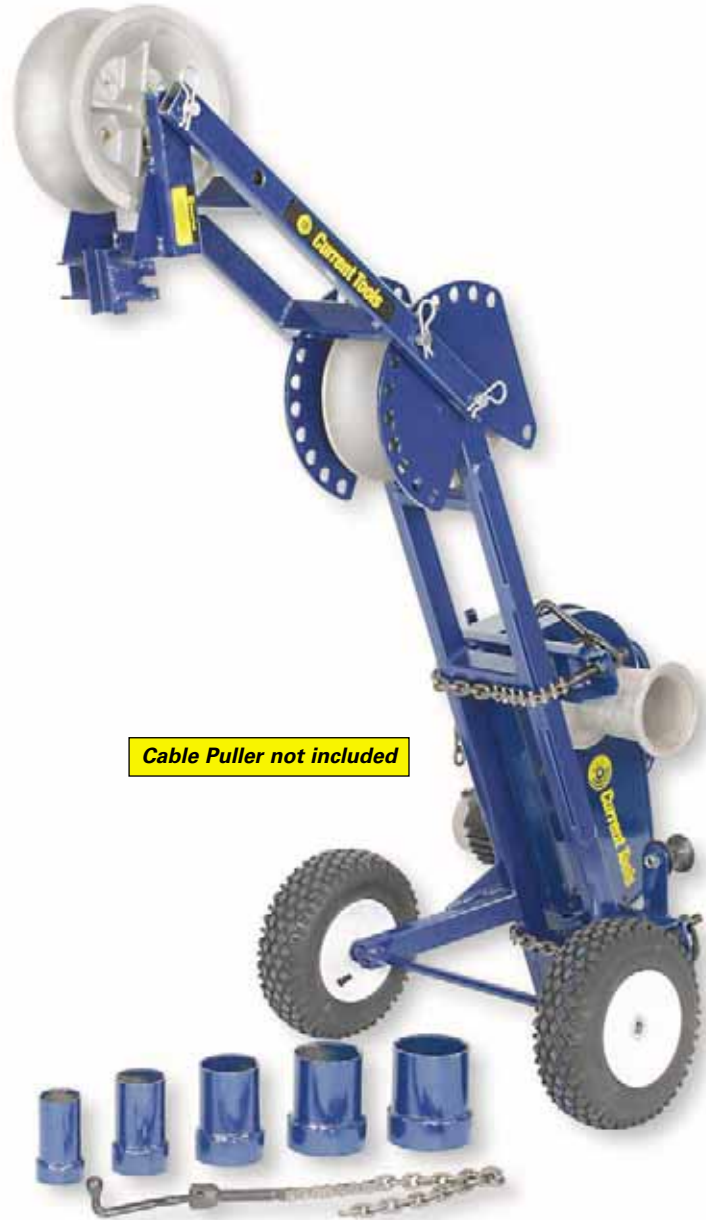
Item Number	Catalog Number	Description	88	8845	8890A	8890AS	8090	8085 BASIC	8885 BASIC	8885S BASIC	Weight
			PACKAGE			CARRIAGE	CARRIAGE	PACKAGE	PACKAGE		
1	88	Cable Puller w/chains	1	1	1	1			1	1	101 lbs.
2	8093	Elbow Unit			1	1	1				53 lbs.
3	8094	Nose Unit			1	1	1	1	1	1	38 lbs.
4	8045	Floor Mount		1	1	1			1	1	20 lbs.
5	8100	T - Stand			1	1					12 lbs.
6	8091	Mobile Carriage			1	1	1	1	1	1	85 lbs.
7	8092	Puller Mount			1	1	1	1	1	1	39 lbs.
8	8095	3' Boom Tubes			2	2	2				11 lbs.
9	8096	4' Boom Tubes			2	2	2	2	2	2	15 lbs.
not shown	8097-2.5	Slip-In Coupling – 2 1/2"			(optional)	(optional)	(optional)	1	1	1	4.5 lbs.
10	8097-3	Slip-In Coupling – 3"			1	1	1	1	1	1	5.5 lbs.
11	8097-3.5	Slip-In Coupling – 3 1/2"			1	1	1	(optional)	1	1	6.5 lbs.
12	8097-4	Slip-In Coupling – 4"			1	1	1	1	1	1	8 lbs.
not shown	8097-5	Slip-In Coupling – 5"			(optional)	(optional)	(optional)	(optional)	(optional)	(optional)	9 lbs.
13	8099	Coupling Adapter			1	1	1	1	1	1	8 lbs.
not shown	8098-2	Screw-On Coupling – 2"			(optional)	(optional)	(optional)	1	(optional)	(optional)	4 lbs.
not shown	8098-2.5	Screw-On Coupling – 2 1/2"			(optional)	(optional)	(optional)	(optional)	1	1	4.5 lbs.
14	8098-3	Screw-On Coupling – 3"			1	1	1	1	1	1	5 lbs.
15	8098-3.5	Screw-On Coupling – 3 1/2"			1	1	1	(optional)	1	1	6 lbs.
16	8098-4	Screw-On Coupling – 4"			1	1	1	1	1	1	6.5 lbs.
see page 77	101	Storage Box				1				1	177 lbs.
see page 78	506	Caster Set - 6" (2 swivel, 2 fixed)				1				1	20 lbs.



CABLE PULLING

8080 Mobile Cable Puller Cart for Model 88 Cable Puller

- Easy mobility
- Quick set-up
- Fits thru 32" doorway
- Heavy duty construction for years of job site use
- Includes 2", 2 1/2", 3", 3 1/2", and 4" Screw-on couplings
- Will fit Greenlee® Model 6001 Super Tugger® and 640 Tugger®



Cable Puller not included

Catalog Number	Description	Weight
8080	Mobile Cable Puller Cart	117 lbs.

* Greenlee®, Super Tugger®, and Tugger® are registered trademarks of Greenlee/Extron.



Current Tools
FOR THE PROFESSIONAL ELECTRICIAN

www.currenttools.com

P.O. Box 17026 • Greenville, SC 29606 • 864.244.1201 • fax 864.244.5860 • 800.230.5421



Cable Pulling Package Accessories

Rope Stands

- For organizing and rewinding rope
- Strong welded frame with washer and spring clip to contain rope reel



Catalog Number	Description	Weight
8051	Pulling Rope Stand for 3/4" dia. x 300' or 7/8" dia. x 300' Rope	15 lbs.
8052	Pulling Rope Stand for 3/4" dia. x 600' or 7/8" dia. x 600' Rope	25 lbs.

Cable Puller Floor Mount for 88 Puller

- Use to mount model 88 cable puller to concrete floor. Minimum 3000 psi concrete required
- Supplied with 5/8" x 6" wedge anchors for attachment to concrete floor



Catalog Number	Description	Weight
8045	88 Cable Puller Floor Mount	16 lbs.
8045-3	5/8" x 6" Wedge Anchor for Floor Mount	3 lbs.

Couplings (Screw-on and Slip-In) for Mantis™ Cable Pulling Packages

- Attaches nose unit on Mantis™ Packages to the conduit
- Couplings for Mantis™ Package must be attached to coupling adapter #8099 for use



Catalog Number	Description	Weight
8097-2.5	Slip-in coupling for Mantis™ Package - 2 1/2" conduit	4.5 lbs.
8097-3	Slip-in coupling for Mantis™ Package - 3" conduit	5.5 lbs.
8097-3.5	Slip-in coupling for Mantis™ Package - 3 1/2" conduit	6.5 lbs.
8097-4	Slip-in coupling for Mantis™ Package - 4" conduit	8 lbs.
8097-5	Slip-in coupling for Mantis™ Package - 5" conduit	9 lbs.
8098-2	Screw-on coupling for Mantis™ Package - 2" conduit	4 lbs.
8098-2.5	Screw-on coupling for Mantis™ Package - 2 1/2" conduit	4.5 lbs.
8098-3	Screw-on coupling for Mantis™ Package - 3" conduit	5 lbs.
8098-3.5	Screw-on coupling for Mantis™ Package - 3 1/2" conduit	6 lbs.
8098-4	Screw-on coupling for Mantis™ Package - 4" conduit	6.5 lbs.
8099	Coupling Adapter for Mantis™ Package	8 lbs.



CABLE PULLING

Double Braided Composite Rope

- Composite rope gives strength with low stretch
- Pulling eye on each end
- Double braided jacket and inner core



Larger sizes and lengths available upon request

Please contact us with your special order needs.

Rope Diameter	Catalog Number	Length	Avg. Breaking Strength	Weight
9/16" <i>for up to 4,000 lb. cable pullers</i>	916300 PR	300'	16,000 lbs.	31 lbs.
	916600 PR	600'	16,000 lbs.	63 lbs.
	9161200 PR	1200'	16,000 lbs.	129 lbs.
3/4" <i>for up to 8,000 lb. cable pullers</i>	34300 PR	300'	26,000 lbs.	59 lbs.
	34600 PR	600'	26,000 lbs.	115 lbs.
	341200 PR	1200'	26,000 lbs.	232 lbs.
7/8" <i>for up to 8,000 lb. cable pullers</i>	78300 PR	300'	32,000 lbs.	91 lbs.
	78600 PR	600'	32,000 lbs.	175 lbs.
	781200 PR	1200'	32,000 lbs.	360 lbs.



Current Tools
FOR THE PROFESSIONAL ELECTRICIAN

www.currenttools.com

P.O. Box 17026 • Greenville, SC 29606 • 864.244.1201 • fax 864.244.5860 • 800.230.5421



Cable Pulling Extras

Polyester Measuring / Pulling Tape

- Large printed footage markings
- Use in many applications with various tensile strengths



Catalog Number	Description	Weight
ST1250	Polyester Measuring / Pulling Tape -1,250 lb. Breaking Strength 3000'	42 lbs.
ST1800	Polyester Measuring / Pulling Tape -1,800 lb. Breaking Strength 3000'	44 lbs.
ST2500	Polyester Measuring / Pulling Tape -2,500 lb. Breaking Strength 3000'	46 lbs.

Conduit Measuring Tape

- Easy to read measurements from 0' to 3000'
- Use to fish and measure conduit in one step
- Dispenser available to pay out and cut tape



Catalog Number	Description	Weight
CMT30	Conduit Measuring Tape - 3/16" x 3000'	4 lbs.
CMT30D	Dispenser for Conduit Measuring Tape	2 lbs.

Spiral Wrap Poly Line (Rat Line)

- Dispenses directly from the container
- Virtually tangle free when dispensing
- Pre-punched hole in lid ready for use
- Reusable plastic dispenser
- For pulling rope through conduit



Catalog Number	Description	Weight
SPL65	Spiral Wrap Poly Line - 6500'	11 lbs.

Conduit Pistons (Rats)

- Flexible foam body provides air tight seal
- For use with blower or vacuum fishing systems
- Steel center rod for strength with loops on both sides
- Sizes available for up to 6" conduit



Catalog Number	Description	Weight
R05	Conduit Piston for 1/2" conduit	.04 lbs.
R75	Conduit Piston for 3/4" conduit	.04 lbs.
R10	Conduit Piston for 1" conduit	.1 lbs.
R12	Conduit Piston for 1 1/4" conduit	.12 lbs.
R15	Conduit Piston for 1 1/2" conduit	.15 lbs.
R20	Conduit Piston for 2" conduit	.2 lbs.
R25	Conduit Piston for 2 1/2" conduit	.2 lbs.
R30	Conduit Piston for 3" conduit	.4 lbs.
R35	Conduit Piston for 3 1/2" conduit	.5 lbs.
R40	Conduit Piston for 4" conduit	.6 lbs.
R50	Conduit Piston for 5" conduit	.7 lbs.
R60	Conduit Piston for 6" conduit	.8 lbs.



REEL STANDS & REEL ROLLERS

Screw Type Reel Stands

- All steel construction
- Rugged design for job site use
- Wide base for added stability
- Adjustment pins wired to stands
- Roller heads have self-lubricating bearings



Catalog Number	Description	Weight
660	Small Screw Type Reel Stand Capacity – 2,500 lb. each, 28”-56” Reel Diameter Height – 13” min. to 27” max.	27 lbs.
670	Medium Screw Type Reel Stand Capacity – 2,500 lb. each, 46”-96” Reel Diameter Height – 21” min. to 54” max.	46 lbs.

Ratchet Type Reel Stand

- Heavy duty stands for large reel projects
- All steel construction
- Ratchet mechanism to raise and lower the height
- Wide base for added stability
- Roller heads have self-lubricating bearings



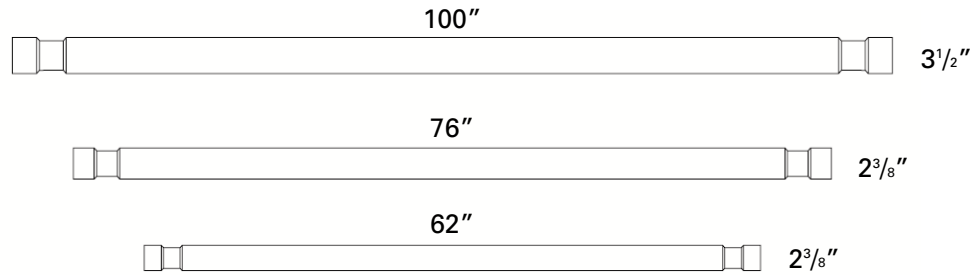
Catalog Number	Description	Weight
680	Large Ratchet Type Reel Stand Capacity – 3,750 lb. each, 58”-90” Reel Diameter Height – 28” min. to 45” max.	99 lbs.





Reel Stand Spindles

- For use with reel stands
- Groove on each end keeps spindle in place on reel stands



Catalog Number	Diameter	Length	Capacity lbs.	use w/ reel stand no.	Weight
661	2-3/8"	62"	5,000	660/670	39 lbs.
671	2-3/8"	76"	5,000	660/670	47 lbs.
681	3-1/2"	100"	7,500	680	119 lbs.



670 Reel Stands with 671 Spindle



REEL STANDS & REEL ROLLERS

610 Reel Roller

- Easy set-up for ground level cable reel pay out
- Integral ramp for reel loading
- Roller lock for reel removal
- 5-position roll adjustment for various reel diameters
- Heavy duty permanently lubricated ball bearing rollers



Catalog Number	Description	Weight
610	Reel Roller Capacity – 2000 lbs. per pair, 42" maximum reel width Dimensions – 11 1/4" x 31 3/4" ea.	40 lbs. each

613 Reel Roller

- Easy set-up for ground level cable reel pay out
- Integral ramp for reel loading
- Roller lock for reel removal
- 5-position roll adjustment for various reel diameters
- Heavy duty permanently lubricated ball bearing rollers



Catalog Number	Description	Weight
613	Cable Reel Roller Capacity – 2500 lbs., 30" maximum reel width Dimensions – 31 3/4" x 37"	75 lbs.





615 Cable Reel Roller

- Heavy duty all welded construction
- Handles up to 15 ton cable reels
- One roller adjusts for various reel sizes
- Speed control adjustment
- Foot control for remote operation
- Heavy duty 10 amp. motor for long service life
- Convenient fork pockets on sides



Catalog Number	Description	Weight
615	15 ton Cable Reel Roller Capacity – 15 ton, 96" wide, and 12' diameter reels (max.) Dimensions – 122" wide x 19" height x 60 3/4" length	2500 lbs.



SHEAVES & CABLE ROLLERS

Hook Type Sheaves – 4,000 lb. Capacity

- 4,000 lb. capacity
- Forged steel hooks with 1" opening
- Welded steel frames
- 5" wide aluminum sheaves with self-lubricating bearings



Catalog Number	Description	Weight
406	6" Diameter hook sheave	11.5 lbs
412	12" Diameter hook sheave	18.5 lbs
418	18" Diameter hook sheave	28.0 lbs
424	24" Diameter hook sheave	38.0 lbs

Replacement Parts

Catalog Number	Sheave	Sheave Pin	Spring Clip	Yoke Frame
406	406-4	406-2	406-3	406-1
412	412-4	406-2	406-3	412-1
418	418-4	406-2	406-3	418-1
424	424-4	406-2	406-3	424-1

Hook Type Sheaves – 8,000 lb. Capacity

- 8,000 lb. capacity
- Forged steel hooks with 1 3/8" opening
- Heavy duty welded steel frame
- Self lubricating bearings
- 3 sizes available: 12"– 5" wide
18"– 6" wide
24"– 6 1/2" wide



Catalog Number	Description	Weight
812	12" Diameter HD hook sheave	24 lbs.
818	18" Diameter HD hook sheave	46 lbs.
824	24" Diameter HD hook sheave	69 lbs.



Current Tools
FOR THE PROFESSIONAL ELECTRICIAN

www.currenttools.com

P.O. Box 17026 • Greenville, SC 29606 • 864.244.1201 • fax 864.244.5860 • 800.230.5421



Right Angle Twin Yoke Sheave

- 4,000 lbs. Capacity
- Forged steel hooks with 1" opening
- Yokes rotate independently for various setups
- Welded steel yoke frames
- 5" wide aluminum sheave with self lubricating bearings



Catalog Number	Description	Weight
4424	Right Angle Twin Yoke Sheave	50 lbs.

Tray Type Sheaves

- Attaches to cable tray up to 2" thick
- 5" aluminum sheave with self lubricating bearings
- Makes tray pulls easier by helping guide and roll cable
- Channel bracket and mounting hardware included



Catalog Number	Description/Size	Weight
951TR	Small Tray-Type Sheave/12" long	11 lbs.
952TR	Large Tray-Type Sheave/22" long	17 lbs.



SHEAVES & CABLE ROLLERS

Triangle Sheave Cable Guide

- 6,500 lbs. Capacity
- Adjustable center sheave to vary pulling radius from 19 1/2" to 36"
- Pinned steel yoke for easy removal
- Aluminum frame for light weight



Catalog Number	Description	Weight
333	Triangle sheave Cable Guide	26 lbs.

Cable Feeding Sheaves

- Tube designed to fit into standard sizes of all types of conduit
- Tube is split for easy removal of cable after installation
- 5" wide aluminum sheaves with self-lubricating bearings
- For feeding of cable into conduit



Catalog Number	Description	Weight
520FS	Feeding sheave for 2" conduit	8 lbs.
525FS	Feeding sheave for 2-1/2" conduit	11 lbs.
530FS	Feeding sheave for 3" conduit	14 lbs.
535FS	Feeding sheave for 3-1/2" conduit	17 lbs.
540FS	Feeding sheave for 4" conduit	19 lbs.
550FS	Feeding sheave for 5" conduit	26 lbs.
560FS	Feeding sheave for 6" conduit	30 lbs.





Radius Sheaves

- 4,000 lbs. Capacity
- Heavy duty design with aluminum sheaves and frame for light weight
- Sheaves spaced to prevent cable damage
- Aluminum sheaves 5" wide with self-lubricating bearings



Catalog Number	Description	Weight
12024	24" Radius Sheaves with 6 Sheaves	53 lbs.
12036	36" Radius Sheaves with 9 Sheaves	72 lbs.
12048	48" Radius Sheaves with 12 Sheaves	115 lbs.

Manhole Sheaves

- 4,000 lb. Capacity
- Easy set-up for manhole pulls
- Aluminum alloy frame for extra strength and light weight
- Adjustable sheave positions
- 8' unit has 12" sheaves, 10' and 12' units have 18" sheaves



Catalog Number	Description	Weight
308	8' Manhole Sheave	81 lbs.
310	10' Manhole Sheave	102 lbs.
312	12' Manhole Sheave	140 lbs.



SHEAVES & CABLE ROLLERS

Cable Rollers

- Installs through bottom of tray for easy removal after installation
- Welded steel frames
- Length adjustment slots
- Long life steel ball bearing rollers
- Each roller supplied with 2 each J-hooks and hardware

*Two styles –
Straight and Radius*



Straight Cable Rollers

Catalog Number	Description	Weight
9518SR	Straight Cable Roller for 12"-18" Tray	7.5 lbs.
9524SR	Straight Cable Roller for 20"-24" Tray	9 lbs.
9530SR	Straight Cable Roller for 24"-30" Tray	12.5 lbs.
9536SR	Straight Cable Roller for 30"-36" Tray	14.5 lbs.



Radius Cable Rollers

Catalog Number	Description	Weight
9518RR	Radius Cable Roller for 12"-18" Tray	10 lbs.
9524RR	Radius Cable Roller for 20"-24" Tray	10.5 lbs.
9530RR	Radius Cable Roller for 24"-30" Tray	12 lbs.
9536RR	Radius Cable Roller for 30"-36" Tray	13 lbs.





Right Angle Rollers

- Welded steel frames
- Long life steel ball bearing rollers
- Easy set-up



Catalog Number	Description/Size	Weight
95024RA	90° Right Angle Rollers - 24" Radius	41 lbs.
95036RA	90° Right Angle Rollers - 36" Radius	53 lbs.

Four-Sided Roller with Clamp

- Designed for multi-directional pulling
- Easily clamps to most styles of cable tray
- Low friction rollers for ease of pulling
- Quick release pin for fast loading/unloading of cable
- 6" opening



Catalog Number	Description	Weight
9546	Four Side Roller – 6" Capacity – 100 lbs.	9.5 lbs.



WIRE CARTS

501 Dolly Cart

- Heavy duty dolly type cart can be used vertically or horizontally
- Rods to hold wire reels have spring clips on each end for easy loading/unloading
- Large 8" wheels for easy mobility
- Wire guide on handle for horizontal dispensing
- Will fit through 28" door



Catalog Number	Description	Weight
501	Dolly Cart Capacity – Will hold 6 - 2,500' spools up to 16" diameter or 15 - 500' spools	62 lbs.

502 Turtle Cart

- Heavy duty frame
- Wire guide permanently mounted to front of cart
- Spindle designed to reduce backlash
- Will fit thru 30" door
- Large wheels for easy mobility
 - front swivel/brake caster
 - semi pneumatic rear wheels



**Better than the rest!
Designed with solid
through-bar construction**



Catalog Number	Description	Weight
502	Turtle Cart Capacity – will hold 6 - 2,500' spools up to 18" diameter	86 lbs.



WIRE CARTS



503 Wire Tree

- Heavy duty tree type wire dispenser
- Spindles designed to reduce backlash
- Wire guide permanently mounted on front of cart - swivels 360° for up or down pulls
- T-handle for ease of transporting
- Will fit through 32" door
- Large 8" wheels for easy mobility - front wheels swivel and brake



**Better than the rest!
Designed with solid
through-bar construction**



Catalog Number	Description	Weight
503	Wire Tree Capacity – holds up to 10 – 2,500 ft. spools of wire up to 18" in diameter	175 lbs.

504 Reel Dolly

- Designed to easily move and dispense reels of wire around the job site
- Heavy duty design for years of service
- Folding handles to save space
- 8" Diameter molded-on rubber wheels



Catalog Number	Description	Weight
504	Reel Dolly Capacity – Maximum 300 lbs. Holds reel of cable up to 20" wide and 40" in diameter	114 lbs.



WIRE CARTS

509 Armored Cable Dispenser

- Sturdy steel construction for rugged use
- Includes cable guide to prevent tangles
- Adjustable spring to prevent overfeeding



Catalog Number	Description	Weight
509	Armored Cable Dispenser Dispensing Capacity – 1 coil, 250' 14/2, 14/3, 12/2, 12/3 Armored cable or unboxed Romex	25 lbs.

509M Mobile Armored Cable Dispenser

- Can transport up to 3 coils weighing up to 250 lbs. total
- Sturdy steel construction for rugged use
- Convenient T-handle and durable wheels for easy mobility
- Fits through standard doorway
- Includes cable guide to prevent tangles
- Adjustable spring to prevent overfeeding



Catalog Number	Description	Weight
509M	Mobile Armored Cable Dispenser Transport Capacity – up to 3 coils armored cable weighing up to 250 lbs. Dispensing Capacity – 1 coil 250' 14/2, 14/3, 12/2 or 12/3 Armored cable or unboxed Romex	48 lbs.





507 Conduit Bundler

- Designed for easy movement of large bundles of conduit on the job site
- Welded construction for years of job site use
- Provided with large 6" casters; 2 swivel and 2 fixed



Catalog Number	Description	Weight
507	Conduit Bundler with casters Capacity – 1,000 lbs.	112 lbs.

505 Conduit Rack

- For organizing conduit or pipe
- 7 spaces for sorting
- Arms fold down to save space
- Provided with large 6" casters; 2 swivel and 2 fixed



Catalog Number	Description	Weight
505	Conduit Rack Capacity – 1000 lbs.	111 lbs.



CONDUIT STORAGE & TRANSPORT

508 Pipe/Conduit Transporter

- Transports up to 20' lengths of pipe
- 1000 lb. capacity
- Large pneumatic tires move load with ease
- Ergonomically designed handle
- Heavy duty construction



Catalog Number	Description	Weight
508	Pipe/Conduit Transporter Capacity – 1000 lbs.	92 lbs.



Current Tools
FOR THE PROFESSIONAL ELECTRICIAN

www.currenttools.com

P.O. Box 17026 • Greenville, SC 29606 • 864.244.1201 • fax 864.244.5860 • 800.230.5421



Die-Type Crimpers 12 MC

- Rapid ram advance
- 12 tons of force
- C-shaped head with 180° rotation for ease of accessibility
- Capacity for all U or shell-type dies
- Trigger Release handle
- High-pressure safety relief valve
- Push-button system for ease of die insertion and removal



Compare to Burndy®
Y-35 and T&B® JB-12B

Technical Data

Crimping Force:	13.1 US tons	11.9 Metric tons
Operation Pressure:	10,000 PSI	70,000 kPA (70 BAR)
Jaw Opening:	0.950 inch	2.413 cm
Crimping Capacity:	See chart below	
Overall Length:	22.63 inches	5747 cm
Depth:	2.75 inches	6.98 cm
Head Width:	4.75 inches	12.07 cm
Tool Weight:	13.6 pounds	6.16 kg

Crimping Capacity

Copper

- No. 8 stranded through 500 MCM grounding terminals and splices
- No. 8 stranded through 250 MCM grounding taps and 3/4" ground rod
- No. 8 stranded through 750 MCM insulated and uninsulated terminals

Aluminum

- No. 8 stranded through 750 MCM terminals
- No. 8 stranded through 350 MCM splices

ACSR

- No. 6 stranded through 556.5 26/7 stranding

Catalog Number	Description	Weight
12MC	12-Ton Hand Hydraulic Crimping Tool	14 lbs.

Die-Type Crimpers 14 MC

- 1 1/2 inch jaw opening
- Two-speed pumping system for rapid ram advance
- Capacity for all U or shell-type dies
- Twist-handle release
- Push-button system for ease of die insertion and removal



Compare to Burndy®
Y-750 12-Ton and T&B® TBM-14M

Technical Data

Crimping Force:	14.0 US tons	12.9 Metric tons
Operation Pressure:	10,000 PSI	70,000 kPA (70 BAR)
Crimping Capacity:	1.5 inches	3.81 cm
Overall Length:	See chart below	
Depth:	25 inches	63.5 cm
Head Width:	4.69 inches	11.91 cm
Tool Width:	16 pounds	7.26 kg

Crimping Capacity

Copper:	750 MCM
Aluminum:	750 MCM

Catalog Number	Description	Weight
14MC	14-Ton Hand Hydraulic Crimping Tool	16 lbs.

Burndy® is a registered trademark of Framatome Connectors International
T&B® is a registered trademark of Thomas & Betts Corporation



CRIMPING TOOLS

Remote Compression Heads

12 RH

- Compact, lightweight design for reaching tight places
- 12 tons of force
- Capacity for all U or shell-type dies
- Push-button system for ease of die insertion and removal



Compare to Burndy®
Y-35BH or T&B®

Technical Data

<i>Crimping Force:</i>	13.1 US tons	11.9 Metric tons
<i>Operation Pressure:</i>	10,000 PSI	70,000 kPA (70 BAR)
<i>Crimping Capacity:</i>	See chart below	
<i>Overall Length:</i>	10.5 inches	26.67 cm
<i>Depth:</i>	2.75 inches	6.98 cm
<i>Head Width:</i>	5.0 inches	12.7 cm
<i>Tool Width:</i>	8.2 pounds	3.72 kg

Crimping Capacity

Copper

- No. 8 stranded through 500 MCM grounding terminals and splices
- No. 8 stranded through 250 MCM grounding taps and 3/4" ground rod
- No. 8 stranded through 750 MCM insulated and uninsulated terminals

Aluminum

- No. 8 stranded through 750 MCM terminals
- No. 8 stranded through 350 MCM splices

ASCR

- No. 6 stranded through 556.5 26/7 stranding

Catalog Number	Description	Weight
12RH	12-Ton Remote Hydraulic Crimping Tool	8.2 lbs.

Remote Compression Heads

14 RH

- 1 1/2 inch jaw opening
- Compact, light-weight design for reaching tight places
- 14 tons of force
- Capacity for all U or shell-type dies
- Push-button system for ease of die insertion and removal



Compare to Burndy®
Y-750BH 12Ton or T&B® 13100A

Technical Data

<i>Crimping Force:</i>	14.5 US tons	13.2 Metric tons
<i>Operation Pressure:</i>	10,000 PSI	70,000 kPA (70 BAR)
<i>Crimping Capacity:</i>	See chart below	
<i>Overall Length:</i>	12.19 inches	30.96 cm
<i>Depth:</i>	2.88 inches	7.3 cm
<i>Head Width:</i>	4.69 inches	11.91 cm
<i>Tool Width:</i>	12.5 pounds	5.67 kg

Crimping Capacity

<i>Copper:</i>	750 MCM
<i>Aluminum:</i>	750 MCM

Catalog Number	Description	Weight
14RH	14-Ton Remote Hydraulic Crimping Tool	12.5 lbs.

Burndy® is a registered trademark of Framatome Connectors International
T&B® is a registered trademark of Thomas & Betts Corporation



Current Tools
FOR THE PROFESSIONAL ELECTRICIAN

www.currenttools.com

P.O. Box 17026 • Greenville, SC 29606 • 864.244.1201 • fax 864.244.5860 • 800.230.5421



Remote Compression Heads

15 RH

- Comes standard with Y46 die adapters to accommodate Y46 dies
- Optional Y35, PH2, PH14, TBM15 die adapters eliminate the need for multiple tools
- Die holder assemblies designed for easy use of different dies in the field
- Streamlined C head for maneuverability
- More than 15 tons of force at 10,000 PSI



Technical Data

<i>Crimping Force:</i>	15.7 US tons	14.3 Metric tons
<i>Operation Pressure:</i>	10,000 PSI	70,000 kPa (70 BAR)
<i>Crimping Capacity:</i>	See chart below	
<i>Overall Length:</i>	14.75 inches	37.47 cm
<i>Depth:</i>	3.00 inches	7.62 cm
<i>Head Width:</i>	4.39 inches	11.15 cm
<i>Tool Width:</i>	14.5 pounds	6.58 kg

Crimping Capacity

<i>Tool with 12-ton "Shell" Die Holder Assemblies</i>	<i>Tool with PH2 Die Holder Assemblies and PH14 Dies</i>	<i>Tool with TBM15 Die Holder Assemblies</i>	<i>Tools with Y46 Die Holder Assemblies</i>
Copper 500 MCM splices, 750 MCM terminals	Copper 1033 MCM str. fittings	Copper 100 MCM fittings	Copper 1250 MCM fittings
Aluminum 350 MCM splices, 750 MCM terminals	Aluminum 1033 MCM str. fittings	Aluminum 1000 MCM fittings	Aluminum 1250 MCM fittings
ACSR —	ACSR 1027 MCM 48/7 fittings	ACSR —	ACSR —



Compare to Burndy®
Y-45 and T&B® TBM-15PF

Catalog Number	Description	Weight
15RH	15-Ton Universal Remote Hydraulic Crimping Tool	15 lbs.

Remote Compression Head Pump

1 ACP

- 5/8 HP universal electric motor (50/60 cycle)
- Two-stage pump for rapid ram advance
- Operational under low-line voltage conditions
- 10,000 PSI high-pressure pump
- Optional operating pressure available; call for details
- Designed for use with spring-returned remote tools
- High-pressure safety relief valve
- Remote hand control with 12-foot cord
- Carrying handle

Technical Data

<i>Electric Motor:</i>	5/8 HP, 0.47 kw, 3,300 RPM	115V or 130V AC	11 amp
<i>Electrical Control:</i>	Remote control with 12-foot cord		
<i>Oil Delivery:</i>	160 cubic inches at 100 PSI		
<i>per minute:</i>	2.620liters at 700 kPa (7.0 BAR)		
	30 cubic inches at 10,000 PSI		
	0.491 liter at 70,000 kPa (700 BAR)		
<i>Oil Reservoir:</i>	1.61 quarts	1.51 liters	
<i>Usable Oil:</i>	0.75 quart	0.71 liter	
<i>Overall Width:</i>	6.5 inches	16.51 cm	
<i>Length:</i>	8.25 inches	20.95 cm	
<i>Height:</i>	14.38 inches	36.51 cm	
<i>Pump Weight with Oil:</i>	28 pounds	12.7 kg	



Compare to Burndy®
EPP-10 and Compare to T&B® 13600

Catalog Number	Description	Weight
1ACP	Hydraulic Power Pump	28 lbs.



Burndy® is a registered trademark of Framatome Connectors International
T&B® is a registered trademark of Thomas & Betts Corporation

www.currenttools.com

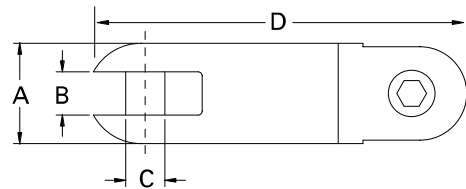
PULLING ACCESSORIES

Line Swivels — 00505 Series

- Current Tools line swivels are constructed with a thrust bearing for tensile load and a radial bearing for bending load. They combine a high safe working load with a compact design.
- All sizes incorporate an oil seal and are manufactured from high strength stainless steel.
- Sizes 00505-020 and larger are supplied with a grease point for lubrication.
- Sizes 00505-025 and larger are supplied with hexagon Clevis Pins.



CAUTION
Line swivels are not designed to run around sheaves.



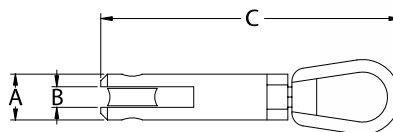
Catalog Number	*Underground Safe Working Load	**Overhead Safe Working Load	A	B	C	D	Standard Clevis Pins	Weight
00505-005	750 lb.	450 lbs.	5/8"	9/32"	3/16"	2-1/2"	00005-SLT	.13 lb.
00505-010	2,250 lb.	1,350 bs.	7/8"	3/8"	5/16"	3-3/8"	00010-SLT	.34 lb.
00505-015	3,500 lb.	2,100 lbs.	1"	13/32"	3/8"	3-7/8"	00015-SLT	.50 lb.
00505-020	5,000 lb.	3,000 lbs.	1-1/4"	17/32"	13/32"	4-3/4"	00020-SLT	1.00 lb.
00505-025	7,000 lb.	4,200 lbs.	1-3/8"	9/16"	1/2"	5-1/8"	00025-HEX	1.40 lbs.
00505-027	9,000 lb.	5,400 lbs.	1-1/2"	19/32"	1/2"	5-5/8"	00025-HEX	1.70 lbs.
00505-030	10,000 lb.	6,000 lbs.	1-5/8"	11/16"	5/8"	6"	00030-HEX	2.10 lbs.
00505-035	15,000 lb.	9,000 lbs.	2"	25/32"	11/16"	7"	00035-HEX	3.80 lbs.
00505-040	30,000 lb.	18,000 lbs.	2-3/8"	1-1/32"	7/8"	10"	00040-HEX	7.60 lbs.
00505-045	50,000 lb.	30,000 lbs.	3"	1-3/16"	1-1/8"	13"	00045-HEX	17.00 lbs.

*Safety Factor of 3:1 — horizontal pull only

**Safety Factor of 5:1

Wire Grip Swivels — 00501 Series

These swivels may be used in conjunction with any non-rotary head wire mesh grip. They will allow the wire being installed to "unwind" as it is being pulled in, but like the Rotary Heads, these swivels will not rotate under load.



Catalog Number	Min. Breaking Strength	A	B	C	Weight
00501-010	10,000 lbs.	1 1/4"	9/16"	7"	1.5 lbs.
00501-025	25,000 lbs.	1 5/8"	9/16"	8 5/8"	3.3 lbs.



Current Tools
FOR THE PROFESSIONAL ELECTRICIAN

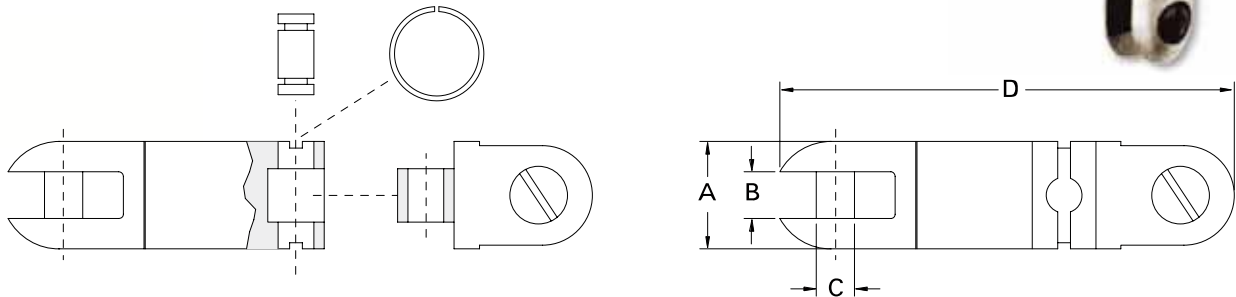
www.currenttools.com

P.O. Box 17026 • Greenville, SC 29606 • 864.244.1201 • fax 864.244.5860 • 800.230.5421



Breakaway Swivel — 00550 Series

- The purpose of this product is to protect the cable being installed from overload as well as providing the function of a regular Line Swivel. Typically, they are used during the installation of Fiber Optic cable where the swivel can be pre-set to breakaway at a pre-determined load, thus protecting the fibers or the conduit.
- Breakaway pin kits are ordered separately from breakaway swivels.
- Breakaway pin load ratings are within +/-10%.
- The Swivel is constructed of stainless steel and the breakaway pins are color coded for easy identification.



Note: Breakaway pin kits not included with breakaway swivels and must be ordered from chart below.

Catalog Number	A	B	C	D	Use Breakaway Pin Kits in:	Weight
00550-005	5/8"	9/32"	3/16"	3-1/4"	GROUP A	0.17 lb.
00550-010	7/8"	3/8"	5/16"	4-1/16"	GROUP B	0.42 lb.
00550-020	1-1/4"	17/32"	13/32"	5-9/16"	GROUP C	1.20 lbs.

Breakaway Pin Kits

Catalog Number	Breaking Point	Color Code		Qty per Pack
00555-002	200 lbs.	WHITE	Group A use with 000550-005	10
00555-0034	340 lbs.	RED		
00555-004	400 lbs.	YELLOW		
00555-0045	450 lbs.	BLUE		
00555-006	600 lbs.	ORANGE		
00555-007	675 lbs.	BLACK		
00535-002	200 lbs.	WHITE		
00535-004	400 lbs.	YELLOW		
00535-006	600 lbs.	ORANGE		
00535-008	800 lbs.	GREY		
00535-010	1000 lbs.	RED		
00555-018	1,800 lbs.	GREEN	Group C use with 00550-020	5
00555-020	2,000 lbs.	BLUE		

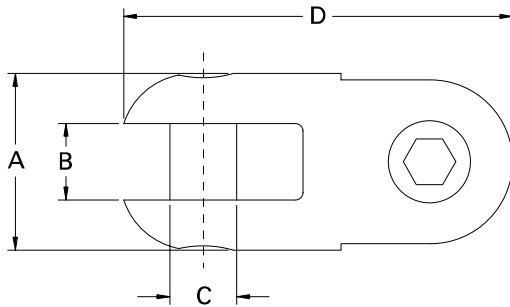
Various break points available up to 4000 lbs. upon request



PULLING ACCESSORIES

Can-Link Connector — 00520 Series

- The 00520 Connector is used to connect two items with lugs or wire loop fittings. A common use is to connect a wire mesh grip to the pulling wire. The connectors are manufactured from high strength Stainless Steel with hardened Clevis Pins. The two smaller sizes have slotted Clevis Pins while the larger ones have hexagon Clevis Pins.



Catalog Number	*Safe Working Load	A	B	C	D	Weight
00520-010	2500 lbs.	7/8"	3/8"	5/16"	2 1/8"	0.19 lbs.
00520-020	5000 lbs.	1 1/4"	17/32"	13/32"	2 7/8"	0.50 lbs.
00520-027	9000 lbs.	1 1/2"	19/32"	1/2"	3 3/8"	0.80 lbs.
00520-035	15000 lbs.	2"	25/32"	11/16"	4 9/16"	2.00 lbs.

*Safety Factor of 3:1

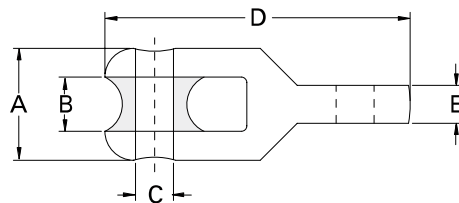
Rope to Swivel Connector — 00522 Series

- This product is used to connect a swivel to pulling rope. The entire product, including sheave, is manufactured from stainless steel.



Line Swivel Selection

Connector #	Use with these Line Swivels
00522-025:	00505-020 00505-025 00505-027
00522-035:	00505-030 00505-035



Catalog Number	*Safe Working Load	Maximum Rope Diameter	A	B	C	D	E	Weight
00522-025	7,000 lb.	7/8"	2"	15/16"	11/16"	5 5/16"	1/2"	2.10 lbs.
00522-035	15,000 lb.	7/8"	2"	15/16"	11/16"	5 3/8"	21/32"	2.30 lbs.

*Safety Factor of 3:1



Current Tools
FOR THE PROFESSIONAL ELECTRICIAN

www.currenttools.com

P.O. Box 17026 • Greenville, SC 29606 • 864.244.1201 • fax 864.244.5860 • 800.230.5421



Pulling Harnesses

- Designed to pull in 2" and larger conduit
- Harness legs are 1/4" galvanized aircraft cable
- Staggered grips on each double leg harness to avoid interference with each other
- Harnesses available in long and short lengths
- Grips have 5/8" diameter opening and are supplied with 2 jam screws
- See maximum capacities listing below



Pulling Harness Kits

Catalog Number	Description	Weight
2500	Includes 1 each of the following: 2502 – Clevis 2500-1 – Double Leg Pulling Harness – long 2500-2 – Double Leg Pulling Harness – short 2500-3 – Allen Wrench 3/8" 2500-4 – Allen Wrench 1/4"	5 lbs.
2501	Includes 1 each of the following: 2500-1 – Double Leg Pulling Harness – long 2500-2 – Double Leg Pulling Harness – short 2500-3 – Allen Wrench 3/8"	2 lbs.

Individual Harnesses

Catalog Number	Description	Weight
2500-1	Double Leg Pulling Harness – long	2 lbs.
2500-2	Double Leg Pulling Harness – short	2 lbs.

Clevis

Catalog Number	Description	Weight
2502	Clevis Max. Rated Capacity – 6,500 lbs.	1.2 lbs.

Maximum Capacities

The following are MAXIMUM pulling capacities:

- 1,750 lbs. maximum when using 1 grip of a double leg pulling harness
- 3,250 lbs. maximum per double leg pulling harness when using both grips of a double leg pulling harness
- 6,500 lbs. maximum when using both (Model 2500-1 and Model 2500-2) double leg pulling harnesses
- Clevis maximum capacity is 6,500 lbs.



PULLING ACCESSORIES

Pulling Grips

Current Tools cable grips are hand-woven by experienced trades people and this guarantees a consistent level of high quality. **Current Tools** grips are reverse woven, creating a loop at the end of the grip instead of being soldered or crimped together.

The looped pulling head is actually a separate wire rope eye which is placed inside the swage sleeve along with the wire mesh strands. The swage sleeve is then crimped forming an extremely effective anchor point for both the looped head and the wire mesh. Testing proves this is never the weakest link of the product. The flexible eye allows cable to be pulled more easily through smaller conduit.

The **Current Tools** cable grips enclose the cable firmly over the entire length of the mesh. They are made of high tensile steel strands. Depending on the type of grip, the strand comprises 7, 12 or 19 wires. By selecting the most suitable strand, the tension distribution characteristics can be adjusted to suit the requirements.

All **Current Tools** grips meet the highest standards in terms of material and workmanship and we are pleased to offer a wide range of grips with different designs and eye arrangements for onsite, underground or overhead installations.

In addition to the grips listed in this catalog, **Current Tools** can also supply special products for particular fields of application. Information on these will be supplied upon request.

Some of the grips offered in this catalog have Rotating Heads which allow the grip to rotate while not under load.



Current Tools also offers the 00501 Series swivel, designed specifically for use with flexible eye grips, it is easily interchangeable but it will also not rotate under load.

All capacities indicated are Approximate Breaking Strength. Each user must decide what safety factor they require for each specific operation before selecting which grip to use. Due to metal fatigue and possible in-use damage, quoted values only apply to new grips.

Please refer to the following pages for information on **Current Tools** pulling grips. Line Swivels, Breakaway Swivels and Connectors suitable for use with the grips may also be found in this catalog.

Grip Selection Chart — For cables of equal diameter in one grip.

2 Cables Dia. Range ea Cable (in)	3 Cables Dia. Range ea Cable (in)	4 Cables Dia. Range ea Cable (in)	5 Cables Dia. Range ea Cable (in)	6&7 Cables Dia. Range ea Cable (in)	8 Cables Dia. Range ea Cable (in)	9 Cables Dia. Range ea Cable (in)	Required Grip Diameter Range
.30-.38	.25-.31	.22-.27	.19-.24	.17-.22	.15-.19	.14-.18	.50-.61
.38-.44	.31-.36	.27-.31	.24-.29	.22-.26	.19-.23	.18-.21	.62-.74
.44-.59	.36-.49	.31-.42	.29-.38	.26-.34	.23-.31	.21-.28	.75-.99
.59-.75	.49-.63	.42-.54	.38-.48	.34-.43	.31-.39	.28-.35	1.00-1.24
.75-.90	.63-.76	.54-.65	.48-.58	.43-.52	.39-.46	.35-.42	1.25-1.49
.90-1.07	.76-.89	.65-.77	.58-.67	.52-.60	.46-.54	.42-.49	1.50-1.74
1.07-1.22	.89-1.02	.77-.88	.67-.77	.60-.69	.54-.62	.49-.56	1.75-1.99
1.22-1.53	1.02-1.28	.88-1.10	.77-.96	.69-.86	.62-.77	.56-.71	2.00-2.49
1.53-1.83	1.28-1.53	1.10-1.32	.96-1.16	.86-1.03	.77-.93	.71-.85	2.50-2.99
1.83-2.14	1.53-1.79	1.32-1.54	1.16-1.35	1.03-1.20	.93-1.08	.85-.99	3.00-3.49
2.14-2.44	1.79-2.05	1.54-1.76	1.35-1.54	1.20-1.37	1.08-1.24	.99-1.13	3.50-3.99
2.44-2.75	2.05-2.30	1.76-1.98	1.54-1.74	1.37-1.55	1.24-1.39	1.13-1.27	4.00-4.49
2.75-3.06	2.30-2.56	1.98-2.20	1.74-1.93	1.55-1.72	1.39-1.55	1.27-1.41	4.50-4.99



Current Tools
FOR THE PROFESSIONAL ELECTRICIAN

www.currenttools.com

P.O. Box 17026 • Greenville, SC 29606 • 864.244.1201 • fax 864.244.5860 • 800.230.5421

PULLING ACCESSORIES



Pulling Grips — 00661 Series

SINGLE WEAVE – GALVANIZED WIRE – SINGLE EYE – LIGHT DUTY
 These grips offer a Flexible Eye with Single Weave galvanized wire construction for light duty applications.

Catalog Number	Size Range	Mesh Length	Approx. Breaking Strength	Weight
00661-004	0.15" to 0.24"	6 1/2"	400 lbs.	0.1 lb.
00661-006	0.25" to 0.37"	6 1/2"	460 lbs.	0.2 lb.
00661-010	0.38" to 0.49"	7 1/2"	860 lb.	0.3 lb.
00661-013	0.50" to 0.62"	9"	1,250 lbs.	0.4 lb.
00661-016	0.63" to 0.74"	12"	1,790 lbs.	0.8 lb.
00661-019	0.75" to 0.99"	12"	2,580 lbs.	1.2 lbs.
00661-025	1.00" to 1.24"	12"	4,090 lbs.	2.1 lbs.



Pulling Grips — 00662 & 00664 Series

NON CONDUCTIVE – SINGLE/DOUBLE WEAVE – SINGLE EYE
 These grips are non-conductive and may be used to install fiber optic cable. Smaller sizes are Single Weave and larger sizes are Double Weave.

Catalog Number	Size Range	Weave	Approx. Breaking Strength	Weight
00662-010	0.38" to 0.74"	Single	2,500 lbs.	0.2 lb.
00662-020	0.75" to 1.12"	Single	3,700 lbs.	0.2 lb.
00664-030	1.13" to 1.49"	Double	9,800 lbs.	0.3 lb.
00664-040	1.50" to 1.99"	Double	11,800 lbs.	0.4 lb.



Pulling Grips — 00670 & 00671 Series

DOUBLE WEAVE – GALVANIZED WIRE – SINGLE EYE
 These grips offer a Flexible Eye and Double Weave galvanized wire construction for regular load pulls.

Catalog Number	Size Range	Mesh Length	Approx. Breaking Strength	Weight
00670-025	0.24" to 0.37"	18"	4,250 lbs.	0.3 lb.
00670-038	0.38" to 0.74"	18"	5,000 lbs.	0.3 lb.
00670-050	0.75" to 1.12"	18"	6,600 lbs.	0.4 lb.
00670-100	1.13" to 1.49"	21"	10,000 lbs.	0.6 lb.
00670-125	1.50" to 1.99"	23"	13,800 lbs.	1.3 lbs.
00670-200	2.00" to 2.49"	24"	14,200 lbs.	1.4 lbs.
00670-250	2.50" to 2.99"	28"	17,500 lbs.	1.7 lbs.
00671-080	3.00" to 3.74"	30"	18,000 lbs.	1.9 lbs.
00671-095	3.75" to 4.24"	32"	26,500 lbs.	2.3 lbs.



Always read Breaking Strength, safety and technical data information.



PULLING ACCESSORIES

Pulling Grips — 00674 & 00675 Series

DOUBLE WEAVE – SINGLE EYE – SLACK GRIP – CLOSED MESH

These grips offer a Flexible Eye and Double Weave galvanized wire construction for those times when a side loaded pulling rope is easier. If the cable end is available, then the Closed Mesh is preferred.



Catalog Number	Size Range	Mesh Length	Approx. Breaking Strength	Weight
00674-010	0.38" to 0.74"	14"	2,500 lbs.	0.44 lb.
00674-020	0.75" to 1.12"	17"	3,000 lbs.	0.48 lb.
00674-030	1.13" to 1.49"	18"	5,000 lbs.	0.84 lb.
00674-040	1.50" to 1.99"	20"	10,000 lbs.	1.41 lbs.
00675-050	2.00" to 2.49"	21"	11,000 lbs.	2.56 lbs.
00675-065	2.50" to 2.99"	22"	12,000 lbs.	2.64 lbs.
00675-080	3.00" to 3.74"	23"	15,000 lbs.	2.95 lbs.
00675-095	3.75" to 4.24"	24"	15,000 lbs.	4.63 lbs.

Pulling Grips — 00678 & 00679 Series

DOUBLE WEAVE – SINGLE EYE – SLACK GRIP – SPLIT MESH (Lace-Up)

These grips offer a Flexible Eye and Double Weave galvanized wire construction for those times when a side loaded pulling rope is easier. If the cable end is not available, then the Split Mesh is preferred.



Catalog Number	Size Range	Mesh Length	Approx. Breaking Strength	Weight
00678-010	0.38" to 0.74"	14"	4,100 lbs.	0.44 lb.
00678-020	0.75" to 1.12"	17"	4,970 lbs.	0.55 lb.
00678-030	1.13" to 1.49"	18"	8,150 lbs.	0.82 lb.
00678-040	1.50" to 1.99"	20"	12,100 lbs.	1.39 lbs.
00679-050	2.00" to 2.49"	21"	16,140 lbs.	1.92 lbs.
00679-065	2.50" to 2.99"	22"	16,140 lbs.	2.00 lbs.
00679-080	3.00" to 3.74"	23"	20,170 lbs.	2.20 lbs.
00679-095	3.75" to 4.24"	24"	23,400 lbs.	3.09 lbs.

Always read Breaking Strength, safety and technical data information.



Current Tools
FOR THE PROFESSIONAL ELECTRICIAN

www.currenttools.com

P.O. Box 17026 • Greenville, SC 29606 • 864.244.1201 • fax 864.244.5860 • 800.230.5421



Pulling Grips — 00680 Series

DOUBLE WEAVE – SINGLE EYE – SHOULDERS

These grips offer a FLEXible Eye with Shoulders and Double Weave galvanized wire construction. The shoulders offer added protection to the cable being pulled in as well as protecting the leading wire strands.



Catalog Number	Size Range	Mesh Length	Approx. Breaking Strength	Weight
00680-025	0.25" to 0.49"	18"	4,800 lbs.	0.4 lb.
00680-038	0.50" to 0.74"	24"	5,800 lbs.	0.4 lb.
00680-050	0.75" to 1.12"	24"	6,700 lbs.	0.5 lb.
00680-100	1.13" to 1.49"	24"	10,000 lbs.	0.6 lb.
00680-125	1.50" to 1.99"	24"	16,400 lbs.	1.3 lbs.
00680-200	2.00" to 2.49"	24"	18,500 lbs.	1.5 lbs.
00680-250	2.50" to 2.99"	36"	24,500 lbs.	2.5 lbs.
00680-300	3.00" to 3.74"	36"	24,500 lbs.	2.7 lbs.
00680-350	3.75" to 4.24"	42"	31,000 lbs.	4.2 lbs.
00680-400	4.25" to 4.99"	48"	31,000 lbs.	4.9 lbs.

Pulling Grips — 00681 Series

TRIPLE WEAVE – SINGLE EYE – SHOULDERS

These grips offer a Flexible Eye with Shoulders and Triple Weave galvanized wire construction. The shoulders help to protect the leading edge of the cable and this type should be used for heavy duty applications.



Catalog Number	Size Range	Mesh Length	Approx. Breaking Strength	Weight
00681-006	0.25" to 0.49"	28"	6,500 lb.	0.5 lb.
00681-012	0.50" to 0.74"	33"	10,400 lb.	0.9 lb.
00681-019	0.75" to 0.99"	41"	16,000 lb.	1.8 lbs.
00681-025	1.00" to 1.24"	51"	25,400 lb.	3.1 lbs.
00681-032	1.25" to 1.49"	60"	31,700 lb.	4.0 lbs.
00681-038	1.50" to 1.99"	70"	32,000 lb.	4.5 lbs.
00681-048	2.00" to 2.49"	75"	44,600 lb.	4.7 lbs.

Always read Breaking Strength, safety and technical data information.



PULLING ACCESSORIES

Pulling Grips — 00682 Series

TRIPLE WEAVE – ROTARY HEAD – SHOULDERS

These grips offer a Stainless Steel Rotary Head with Shoulders and Triple Weave galvanized wire construction. The shoulders help to protect the leading edge of the cable and this type should be used for heavy duty applications.



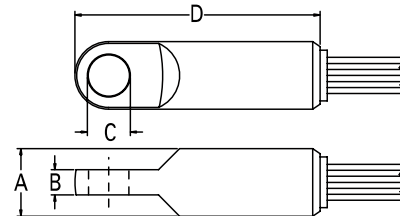
Note: The Rotating Head does not replace the use of a Line Swivel, Series 00505. There are no bearings to allow rotation under load and severe damage may occur to the cable being installed if this product is used without the correct swivel.

Catalog Number	Size Range	Mesh Length	A	B	C	D	Approx. Breaking Strength	Weight
00682-006	0.25" to 0.49"	28"	7/8"	5/16"	1/2"	2 3/4"	6,500 lbs.	1.5 lbs.
00682-012	0.50" to 0.74"	33"	1"	1/2"	9/16"	3 7/8"	10,400 lbs.	1.9 lbs.
00682-019	0.75" to 0.99"	41"	1"	1/2"	9/16"	3 7/8"	16,000 lbs.	3.2 lbs.
00682-025	1.00" to 1.24"	51"	1 3/8"	1/2"	11/16"	5 3/8"	25,400 lbs.	5.1 lbs.
00682-032	1.25" to 1.49"	60"	1 5/8"	9/16"	7/8"	6 1/8"	31,700 lbs.	6.0 lbs.
00682-038	1.50" to 1.99"	70"	1 7/8"	11/16"	1"	7 1/4"	32,000 lbs.	6.5 lbs.
00682-048	2.00" to 2.49"	75"	1 7/8"	11/16"	1"	7 1/4"	44,600 lbs.	6.7 lbs.

Pulling Grips — 00690 Series

DOUBLE WEAVE – ROTARY HEAD – SHOULDERS

These grips offer a Rotating Eye with Shoulders and Double Weave galvanized wire construction. The shoulders help to protect the leading edge of the cable and this type should be used for heavy duty applications.



Note: The Rotating Head does not replace the use of a Line Swivel. There are no bearings to allow rotation under load and severe damage may occur to the cable being installed if this product is used without the correct swivel.

Catalog Number	Size Range	Mesh Length	A	B	C	D	Approx. Breaking Strength	Weight
00690-038	0.50" to 0.74"	16"	7/8"	5/16"	1/2"	2 3/4"	5,800 lbs.	1.5 lbs.
00690-050	0.75" to 1.12"	24"	7/8"	5/16"	1/2"	2 3/4"	6,700 lbs.	1.6 lbs.
00690-100	1.13" to 1.49"	33"	1 3/8"	1/2"	11/16"	5 3/8"	13,000 lbs.	1.9 lbs.
00690-125	1.50" to 1.99"	36"	1 3/8"	1/2"	11/16"	5 3/8"	16,500 lbs.	2.3 lbs.
00690-200	2.00" to 2.49"	36"	1 5/8"	9/16"	7/8"	6 1/8"	27,000 lbs.	3.8 lbs.
00690-250	2.50" to 2.99"	38"	1 7/8"	11/16"	1"	7 1/4"	33,000 lbs.	5.0 lbs.
00690-300	3.00" to 3.74"	39"	1 7/8"	11/16"	1"	7 1/4"	41,000 lbs.	5.2 lbs.
00690-350	3.75" to 4.24"	42"	1-7/8"	11/16"	1"	7 1/4"	48,000 lbs.	9.2 lbs.
00690-400	4.25" to 4.99"	58"	1-7/8"	11/16"	1"	7 1/4"	48,000 lbs.	9.9 lbs.

Always read Breaking Strength, safety and technical data information.



Current Tools
FOR THE PROFESSIONAL ELECTRICIAN

www.currenttools.com

P.O. Box 17026 • Greenville, SC 29606 • 864.244.1201 • fax 864.244.5860 • 800.230.5421



Pulling Grips — 00695 Series

DUAL WIRE – DOUBLE WEAVE – HIGH STRENGTH – SHOULDERS

These extra high strength grips feature a dual wire, double woven construction. This type of grip should be used for heavy duty applications such as overhead transmission wire. The grips are particularly suited to bare conductor and synthetic rope applications.



Catalog Number	Conductor Size Range	Rope Size Range	Mesh Length	Head Length	Approx. Breaking Strength	Weight
00695-019	0.19" to 0.37"	0.25" to 0.65"	24"	10"	6,800 lb.	1.0 lb.
00695-038	0.38" to 0.62"	0.50" to 0.90"	36"	12"	14,500 lb.	1.5 lbs.
00695-063	0.63" to 0.87"	0.75" to 1.10"	48"	13"	21,500 lb.	3.0 lbs.
00695-088	0.88" to 1.12"	1.00" to 1.50"	60"	15"	32,000 lb.	6.0 lbs.
00695-113	1.13" to 1.37"	1.25" to 1.70"	76"	18"	48,000 lb.	13.5 lbs.
00695-138	1.38" to 1.90"	1.50" to 2.10"	89"	24"	68,000 lb.	21.0 lbs.

Always read Breaking Strength, safety and technical data information.

Lube Spreader — 00510 Series

This product is designed to spread the lubricant around the walls and along the length of the conduit, while also acting as a connector.

The body is constructed out of Stainless Steel and the polyurethane disc has angular grooves which allow better distribution of lubricant.



Table A: Spreader Disc

Spreader Disc Catalog Number	Conduit Size	Disc Diameter	Connector Body	Weight
00515-200	2"	1 7/8"	00510-025	0.045 lb.
00515-250	2 1/2"	2 3/16"	00510-025	0.066 lb.
00515-300	3"	2 13/16"	00510-025	0.110 lb.
00515-350	3 1/2"	3 1/4"	00510-035	0.170 lb.
00515-400	4"	3 3/4"	00510-035	0.240 lb.
00515-500	5"	4 11/16"	00510-035	0.450 lb.
00515-640	6"	5 13/16"	00510-035	0.670 lb.

How to Order:

1. Select disc from table (A) to fit the internal diameter of conduit to be lubricated.
2. Select connector assembly from table (B) to match selected disc from table (A).

Table B: Connector Body

Connector Catalog Number	*Safe Working Load	Body Diameter	Overall Length	Clevis Pin	Weight
00510-025	4,000 lbs.	1 3/8"	4 5/8"	00025-HEX	0.70 lb.
00510-035	7,200 lbs.	2"	6 1/4"	00035-HEX	2.50 lbs.

*Safety Factor of 3:1



PULLING ACCESSORIES

Conduit Checker — 08500 Series

Following initial installation of the conduit it is often found that debris or partial collapse of the conduit will impede installation of the cable.

These products are designed to ensure the conduit is clear before installing the cable.

The discs are manufactured from high density polyurethane giving them the toughness to clear the conduit without scraping or scratching the interior walls. The discs are spaced with gaps to allow passage through tight bends. The wire rope running through the mandrel is high quality, galvanized wire.



Catalog Number	Conduit Size	Disc Diameter	*Safe Working Load	Weight
08500-200	2"	1 7/8"	2,300 lbs.	0.92 lb.
08500-250	2 1/2"	2 3/16"	2,300 lbs.	1.10 lbs.
08500-300	3"	2 13/16"	2,300 lbs.	1.60 lbs.
08500-350	3 1/2"	3 1/4"	4,800 lbs.	2.70 lbs.
08500-400	4"	3 3/4"	4,800 lbs.	3.60 lbs.
08500-500	5"	4 11/16"	4,800 lbs.	4.80 lbs.
08500-640	6"	5 13/16"	4,800 lbs.	7.30 lbs.

*Safety Factor is 3:1 (horizontal pulls only)

Spiral Conduit Brush — 08000 Series

Flat steel bristles spiraled onto heavy duty wire spindle with a Pulling Eye on one end only. This product will quickly remove grit or light dirt within the conduit before installing your cable.

Catalog Number	Nominal Conduit Size	Weight
08000-200	2"	0.38 lb.
08000-250	2 1/2"	0.42 lb.
08000-300	3"	0.48 lb.
08000-350	3 1/2"	0.50 lb.
08000-400	4"	0.53 lb.
08000-500	5"	0.62 lb.
08000-600	6"	0.68 lb.





Storage Boxes

- Secure storage for job site tools
- Heavy duty hinges for durability
- Side handles for easy lifting
- Oven-cured paint
- Heavy duty - 16 gauge construction
- Model 101 has pre-drilled holes for caster mounting
- Large bottom runners for easy lifting



Model 104

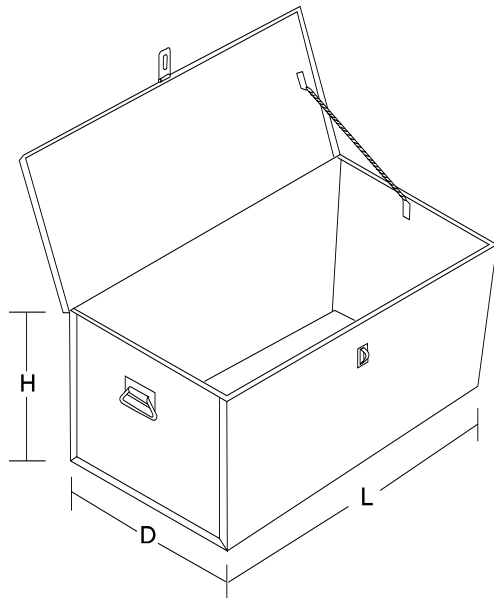


Model 101

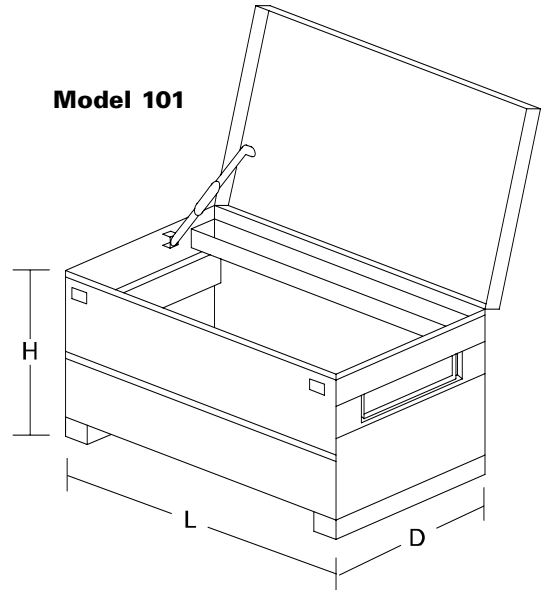
Catalog Number	Description	L	H	D	Weight
101	Storage Box —	48" length	30" height	33" depth	177 lbs.
104	Storage Box —	31" length	15" height	18" depth	51 lbs.
8-0501	Storage Box —	30" length	14" height	18" depth	36 lbs.



STORAGE



Model 101



**Model 104 and
Model 8-0501**

Caster Set

- Heavy duty design to move storage boxes around the job site
- Each set has 2 swivel and 2 fixed casters
- Mounting bolts are provided with each caster set



Catalog Number	Description	Weight
506	6" wheel set; 2 swivel and 2 fixed	20 lbs.



Current Tools
FOR THE PROFESSIONAL ELECTRICIAN

www.currenttools.com

P.O. Box 17026 • Greenville, SC 29606 • 864.244.1201 • fax 864.244.5860 • 800.230.5421



Chain Vise Stand

- Safely holds conduit or pipe for threading, etc.
- Leg support has tray for tools
- Conduit support on top for anchoring stand during threading
- Easily collapsible and transportable

Larger Capacity – to 6" conduit



Catalog Number	Description/Capacity	Weight
9900	Chain Vise Stand for 1/8" to 6" conduit and pipe	45 lbs.



OTHER GOOD STUFF

Threader Stands

- All metal construction
- Will fit RIDGID®*
535 and 1224 threaders
- Large 15" Heavy Duty solid tires on all models
- Available with tray or lockable storage box
- Rear roller arm to help prevent tip-over while rolling



Model 524



Model 526

Catalog Number	Description	Will fit RIDGID®* Model #	Weight
524	Rolling Stand with tray	535 <i>Prior to 2001</i>	100 lbs.
524W	Rolling Stand with tray	1224 535 <i>2001 and Newer</i>	102 lbs.
526	Rolling Stand with storage box	535 <i>Prior to 2001</i>	127 lbs.
526W	Rolling Stand with storage box	1224 535 <i>2001 and Newer</i>	129 lbs.
528	Adapter set – for 524 or 526 stand	pre-1996 535	12 lbs.

* RIDGID® is a registered trademark of Ridge Tool Company.



Current Tools
FOR THE PROFESSIONAL ELECTRICIAN

www.currenttools.com

P.O. Box 17026 • Greenville, SC 29606 • 864.244.1201 • fax 864.244.5860 • 800.230.5421



General Purpose Poly Rope

- High visibility yellow
- Great for roping off areas within construction sites
- Resistant to weather, rot and mildew
- For general purpose use

- **NOT FOR CABLE PULLING.**

See page 46 for ropes used with cable pullers.

NEW



NOT FOR CABLE PULLING.

Rope Diameter	Catalog Number	Length	Avg. Breaking Strength	Weight
1/4"	GPR143	300'	1,250 lbs.	5 lbs.
	GPR146	600'	1,250 lbs.	9 lbs.
	GPR1412	1200'	1,250 lbs.	13 lbs.
3/8"	GPR383	300'	2,700 lbs.	11 lbs.
	GPR386	600'	2,700 lbs.	19 lbs.



COMPARISON REFERENCE

Description	Greenlee® Item #	Current Tools Item #	Page #
BENDING			
OFFSET BENDERS			
1/2" EMT Offset Bender	1810	705	5
3/4" EMT Offset Bender	1811	706	5
MECHANICAL BENDERS			
1/2" to 1" Mechanical Bender – for RIGID/IMC conduit	1800	750	6
1 1/4" and 1 1/2" Mechanical Bender – for RIGID/IMC conduit	1801	751	7
ELECTRIC BENDERS			
Electric Bender Power source only (no shoes)	555®	77 Bender	8, 9
Electric Bender w/ 700E EMT shoes & accessories	555E®	77EMT	9
Electric Bender w/ 700I IMC shoes & accessories	555I®	77IMC	9
Electric Bender w/ 700R Rigid shoes & accessories	555R®	77RIG	9
Electric Bender w/ 700P 40 mil PVC Coated shoes & access.		77PVC	9
Electric Bender w/ 700E, 700I & 700R shoes & access.		77COM	9
77 SHOE GROUP ASSEMBLIES			
700E 1/2" to 2" EMT shoe group	23802	700E	10
1/2" to 1 1/4" EMT bending shoe	17944	2-1501	10
1/2" to 1 1/4" EMT support unit	17986	2-1003	10
1 1/2" EMT bending shoe	23499	2-1601	10
2" EMT bending shoe	23505	2-1701	10
1 1/2" to 2" EMT support roller unit	23541	2-1100	10
Metal storage box	23818	8-0501	10,11
700ES 1 1/2" to 2" EMT shoe group	23816	700ES	10
700I 1 1/2" to 2" IMC shoe group	26330	700I	11
1 1/2" IMC bending shoe	25263	2-1801	11
2" IMC bending shoe	25268	2-1901	11
1 1/2" and 2" IMC support roller unit	25273	2-1200	11
700R 1/2" to 2" Rigid shoe group	28007	700R	10

Greenlee® is a registered trademark of Greenlee/Textron.



Current Tools
FOR THE PROFESSIONAL ELECTRICIAN

www.currenttools.com

P.O. Box 17026 • Greenville, SC 29606 • 864.244.1201 • fax 864.244.5860 • 800.230.5421

COMPARISON REFERENCE



Description	Greenlee® Item #	Current Tools Item #	Page #
1/2" to 1 1/4" Rigid and IMC bending shoe	00571	2-1301	10
1/2" to 1 1/4" Rigid support roller	17979	2-1001	10
1 1/2" and 2" Rigid bending shoe	17937	2-1401	10
1 1/2" and 2" Rigid support roller	17984	2-1002	10
700P 1/2" to 2" PVC coated shoe group	37279	700P	11
1/2" to 1 1/4" PVC coated rigid bending shoe	00573	2-2001	11
1/2" to 1 1/4" PVC coated rigid roller support	00946	2-1004	11
1 1/2" and 2" PVC coated rigid bending shoe	37281	2-2101	11
1 1/2" and 2" PVC coated rigid support roller	37282	2-1005	11
PVC HEATING			
Electric Heater for 1/2" to 2" PVC conduit	849	450	12
Electric Heater for 1/2" to 4" PVC conduit	851	451	12
Manual Electric Heater for 1/2" to 6" PVC conduit	847	452	13
Auto Rotate Electric Heater for 1/2" to 6" PVC Conduit	848	453	13
PVC Heating Blanket for 1/2" to 1 1/2"	860-1 1/2	441	14
PVC Heating Blanket for 2" to 3"	860-3	442	14
PVC Heating Blanket for 3 1/2" to 4"	860-4	443	14
PVC Plug Kit 2" to 4"	859-4	460	15
PVC Plug Kit 2" to 6"		461	15
PVC Plug 2"	30976	46-2	15
PVC Plug 2 1/2"	30977	46-2.5	15
PVC Plug 3" and 3 1/2"	30978	46-3	15
PVC Plug 4"	30979	46-4	15
PVC Plug 5"	30980	46-5	15
PVC Plug 6"	30981	46-6	15
PVC Heater Support Stand	857	454	15

Greenlee® is a registered trademark of Greenlee/Extron.

www.currenttools.com

P.O. Box 17026 • Greenville, SC 29606 • 864.244.1201 • fax 864.244.5860 • 800.230.5421

Current Tools 
FOR THE PROFESSIONAL ELECTRICIAN



COMPARISON REFERENCE

Description	Greenlee® Item #	Current Tools Item #	Page #
BENDING TABLES			
280 Bending Table	1802	280	16
Carriage with vise	21544	280-1	16
Hand crank unit	21543	280-2	16
Rest plate	21545	280-3	16
Idler unit	21542	280-4	16
Leg support	21541	280-5	16
Legs	21346	280-6	16
Magnetic protractor	1895	280-7	16
Support pin (1 1/2" is standard)	21360	280-8	16
Storage box	1531	104	16, 17
281 Bending Table			
281 Bending Table	1813	281	17
Carriage with vise	28900	281-1	17
Bender mount unit	28885	281-2	17
Ram positioning unit	29022	281-3	17
Pump mounting hardware	53824 + 51185	281-4	17
Conduit clamps	53014	281-5	17
Pump mounting brackets	29004	281-6	17
90° fitting	29014	281-7	17
PUMPS			
1 1/2 HP Electric/Hydraulic Pump	960/980	290	18
High pressure hose 3/8" x 6'	11289	291	18
SAWING			
Heavy Duty Band Saw	1399	BSD95	19
HOLEMAKING			
KNOCKOUT SETS			
1/2" to 1 1/4" Piece Maker™ Manual Knockout Set	7235BB	158PM	20
1 1/2" to 2" Piece Maker™ Manual Knockout Set	7237BB	159PM	20
1/2" to 2" Piece Maker™ Ratchet Knockout Set	7238SB	157PM	21

Greenlee® is a registered trademark of Greenlee/Textron.



Current Tools
FOR THE PROFESSIONAL ELECTRICIAN

www.currenttools.com

P.O. Box 17026 • Greenville, SC 29606 • 864.244.1201 • fax 864.244.5860 • 800.230.5421

COMPARISON REFERENCE



Description	Greenlee® Item #	Current Tools Item #	Page #
1/2" to 2" Piece Maker™ Straight Hydraulic Punch Driver Set	7806SB	170PM	22
1/2" to 2" Piece Maker™ 90° Hydraulic Punch Driver Set	7906SB	179PM	22
1/2" to 2" Straight Hydraulic Punch Driver Set	7804SB	170	23
1/2" to 2" 90° Hydraulic Punch Driver Set	7904SB	179	23
1/2" to 2" Piece Maker™ Hydraulic Knockout Set	7306SB	152PM	24, 25
1/2" to 4" Piece Maker™ Hydraulic Knockout Set	7310SB	154PM	24, 25
1/2" to 2" Piece Maker™ SS — K.O. Set for stainless steel	7307	160SS	26, 27
1/2" to 2" Piece Maker™ SS — Hyd. K.O. Set for stainless steel	7506	161SS	26, 27
1/2" to 2" Standard Hydraulic Knockout Set	7306	152	28, 29
1/2" to 4" Standard Hydraulic Knockout Set	7310	154	28, 29
2 1/2" to 4" Knockout Punch and Die Set	7304	156	30, 31
KNOCKOUT SET Parts			
Stud Punch - 7/8"	709	140	34
Stud Punch - 1 11/32"	710	141	34
1/2" Piece Maker™ Punch	721-1/2	1524	20,21,23,25
1/2" Die	14722	1525	20,21,23,25
3/4" Piece Maker™ Punch	721-3/4	1526	20,21,23,25
3/4" Die	124AV	1527	20,21,23,25
1" Piece Maker™ Punch	721-1	1528	20,21,23,25
1" Die	126AV	1529	20,21,23,25
1 1/4" Piece Maker™ Punch	721-1 1/4	1530	20,21,23,25
1 1/4" Die	128AV	1531	20,21,23,25
1 1/2" Piece Maker™ Punch	721-1 1/2	1532	20,21,23,25
1 1/2" Die	440AV	1533	20,21,23,25
2" Piece Maker™ Punch	721-2	1534	20,21,23,25
2" Die	442AV	1535	20,21,23,25
1/2" Standard Punch	121AV	1560	29
3/4" Standard Punch	123AV	1561	29
1" Standard Punch	125AV	1562	29
1 1/4" Standard Punch	127AV	1563	29
1 1/2" Standard Punch	439AV	1564	29

Greenlee® is a registered trademark of Greenlee/Textron.

www.currenttools.com

P.O. Box 17026 • Greenville, SC 29606 • 864.244.1201 • fax 864.244.5860 • 800.230.5421





COMPARISON REFERENCE

Description	Greenlee® Item #	Current Tools Item #	Page #
2" Standard Punch	441AV	1565	29
2 1/2" Punch	1429AV	1566	25,29,31
2 1/2" Die	1430AV	1567	25,29,31
3" Punch	1431AV	1568	25,29,31
3" Die	1432AV	1569	25,29,31
3 1/2" Punch	2982AV	1570	25,29,31
3 1/2" Die	2981AV	1571	25,29,31
4" Punch	2984AV	1572	25,29,31
4" Die	2983AV	1573	25,29,31
1/2" SS Punch	28154	1536	27
1/2" SS Die	28155	1537	27
3/4" SS Punch	28156	1538	27
3/4" SS Die	28157	1539	27
1 7/32" SS Punch	36490	1540	27
1 7/32" SS Die	36489	1541	27
1" SS Punch	28158	1542	27
1" SS Die	28159	1543	27
1 1/4" SS Punch	28160	1544	27
1 1/4" SS Die	28161	1545	27
1 1/2" SS Punch	28162	1546	27
1 1/2" SS Die	28163	1547	27
2" SS Punch	28165	1548	27
2" SS Die	28166	1549	27
3/4" - 7/16" x 4 1/4" SS Draw Stud	29451	1574	27
3/4" x 5 1/2" SS Draw Stud	29452	1575	27
Metal Case - 160 SS	29529	1600	27
Metal Case - 161 SS	31068	1500	27
Short Spacer - S	1924AA	1553	23,25,27,29
Medium Spacer - M	1925AA	1554	25,29
Large Spacer - L	1926AA	1555	25,29

Greenlee® is a registered trademark of Greenlee/Extron.



Current Tools
FOR THE PROFESSIONAL ELECTRICIAN

www.currenttools.com

P.O. Box 17026 • Greenville, SC 29606 • 864.244.1201 • fax 864.244.5860 • 800.230.5421

COMPARISON REFERENCE



Description	Greenlee® Item #	Current Tools Item #	Page #
Spacer Set S – M – L	15908	155-SET	25,29
3/8" Draw Stud	1614SS	1550	23,25,29
3/4" Draw Stud	2113AA	1551	25,29
1 1/8" Adapter Sleeve	1557AA	1552	25,29
3/8" draw bolt	00042	1557	20,21
3/4" draw bolt – short	249AVBB	1559	20
3/4" draw bolt	304AVBB	1558	20,21
1" Ratchet wrench	34941	1556	21
Ram	746	1522	25,27,29,33
Hydraulic Hand Pump	767	1521	25,27,29,33
1/4" x 3' Hydraulic Hose	6302	1523	25,27,29,33
Punch Driver - Straight	34288	1700	23
Punch Driver - 90°	33786	1790	23
3/4" x 4 1/8" Draw Stud	31872	1702	23
Adapter Stud	33967	1703	23
CARRYING CASES			
Carrying Case for 158PM	31880	1502	20
Carrying Case for 159PM	32012	1503	20
Carrying Case for 157PM	34758	157-PC	21
Plastic Carrying Case for 152 and 152PM	30206	1500-PC	25,29
Metal Carrying Case for 154 and 154PM	18402	1501	25,29
CABLE PULLING			
3,000 lb. High Speed Cable Puller	UT2	33	36
8,000 lb. Cable Puller w/chains	6801 / 6801	88	38
8,000 lb. Cable Puller w/floor mount	6800	8845	38
Mantis™ Mobile Cable Pulling Pkg. w/88 puller	6805A	8890A	39
Mantis™ Mobile Cable Pulling Carriage w/two boom sections		8090	40
Mantis™ Mobile Cable Pulling Carriage w/one boom section	11147	8085	42

Greenlee® is a registered trademark of Greenlee/Textron.

www.currenttools.com

P.O. Box 17026 • Greenville, SC 29606 • 864.244.1201 • fax 864.244.5860 • 800.230.5421

Current Tools 
FOR THE PROFESSIONAL ELECTRICIAN



COMPARISON REFERENCE

Description	Greenlee® Item #	Current Tools Item #	Page #
Mantis™ Mobile Cable Pulling Pkg. - Basic		8885	41
Storage box	3048	101	77
Casters – 6" (2 swivel, 2 fixed)	695	506	78
Floor Mount	6037	8045	45
300' Rope Stand	644	8051	45
600' Rope Stand	654	8052	45
Mobile Cable Puller Cart		8080	44
Polyester Measuring / Pulling Tape - 1,250 lb.	4435	ST1250	47
Polyester Measuring / Pulling Tape - 1,800 lb.	4436	ST1800	47
Polyester Measuring / Pulling Tape - 2,500 lb.	4437	ST2500	47
Conduit Measuring Tape - 3000'	435	CMT30	47
Conduit Measuring Tape Dispenser	434	CMT30D	47
Spiral Wrap Poly Line - 6,500'	430	SPL65	47
PULLING ROPE			
Double Braided Rope 9/16" x 300'	35283	916300PR	46
Double Braided Rope 9/16" x 600'	35284	916600PR	46
Double Braided Rope 9/16" x 1200'	35285	9161200PR	46
Double Braided Rope 3/4" x 300'	35098	34300PR	46
Double Braided Rope 3/4" x 600'	35100	34600PR	46
Double Braided Rope 3/4" x 1200'	35101	341200PR	46
Double Braided Rope 7/8" x 300'	34136	78300PR	46
Double Braided Rope 7/8" x 600'	34137	78600PR	46
Double Braided Rope 7/8" x 1200'	34138	781200PR	46
REEL STANDS & REEL ROLLERS			
Small Screw Type Reel Stand	687	660	48
Medium Screw Type Reel Stand	683	670	48
Large Ratchet Type Reel Stand	656	680	48

Greenlee® is a registered trademark of Greenlee/Textron.



Current Tools
FOR THE PROFESSIONAL ELECTRICIAN

www.currenttools.com

P.O. Box 17026 • Greenville, SC 29606 • 864.244.1201 • fax 864.244.5860 • 800.230.5421

COMPARISON REFERENCE



Description	Greenlee® Item #	Current Tools Item #	Page #
Reel Stand Spindles – 62"	647	661	49
Reel Stand Spindles – 76"	684	671	49
Reel Stand Spindles – 100"	657	681	49
Reel Roller Set	39666	610	50
Cable Reel Roller	39660	613	50
15 Ton Cable Reel Roller		615	51
SHEAVES & CABLE ROLLERS			
6" Diameter hook sheave – 4,000 lb. Capacity	650	406	52
12" Diameter hook sheave – 4,000 lb. Capacity	651	412	52
18" Diameter hook sheave – 4,000 lb. Capacity	652	418	52
24" Diameter hook sheave – 4,000 lb. Capacity	653	424	52
12" Diameter HD hook sheave – 8,000 lb. Capacity	8012	812	52
18" Diameter HD hook sheave – 8,000 lb. Capacity	8018	818	52
24" Diameter HD hook sheave – 8,000 lb. Capacity	8024	824	52
Right Angle Twin Yoke Sheave	639	4424	53
Small Tray-Type Sheave — 12" long	658	951TR	53
Large Tray-Type Sheave — 22" long	659	952TR	53
Triangle Sheave Cable Guide	6036	333	54
Feeding Sheave for 2" conduit	441-2	520FS	54
Feeding Sheave for 2 1/2" conduit	441-2 1/2	525FS	54
Feeding Sheave for 3" conduit	441-3	530FS	54
Feeding Sheave for 3 1/2" conduit	441-3 1/2	535FS	54
Feeding Sheave for 4" conduit	441-4	540FS	54
Feeding Sheave for 5" conduit	441-5	550FS	54
Feeding Sheave for 6" conduit		560FS	54
24" Radius Sheaves with 6 sheaves	637	12024	55
36" Radius Sheaves with 9 sheaves	638	12036	55
48" Radius Sheaves with 12 sheaves	631	12048	55
8' Manhole Sheave		308	55
10' Manhole Sheave	671	310	55
12' Manhole Sheave	6072	312	55
Straight Cable Roller for 12" – 18" tray	2018S	9518SR	56

Greenlee® is a registered trademark of Greenlee/Extron.

www.currenttools.com

P.O. Box 17026 • Greenville, SC 29606 • 864.244.1201 • fax 864.244.5860 • 800.230.5421

Current Tools 
FOR THE PROFESSIONAL ELECTRICIAN



COMPARISON REFERENCE

Description	Greenlee® Item #	Current Tools Item #	Page #
Straight Cable Roller for 20" – 24" tray	2024S	9524SR	56
Straight Cable Roller for 24" – 30" tray	2030S	9530SR	56
Straight Cable Roller for 30" – 36" tray	2036S	9536SR	56
Radius Cable Roller for 12" – 18" tray	2018R	9518RR	56
Radius Cable Roller for 20" – 24" tray	2024R	9524RR	56
Radius Cable Roller for 24" – 30" tray	2030R	9530RR	56
Radius Cable Roller for 30" – 36" tray	2036R	9536RR	56
90° Right Angle Rollers – 24" radius	20249R	95024RA	57
90° Right Angle Rollers – 36" radius	20369R	95036RA	57
Four-Sided Roller 6"		9546	57

WIRE CARTS

Dolly Cart	911	501	58
Turtle Cart	909	502	58
Wire Tree	910	503	59
Reel Dolly	916	504	59
Armored Cable Dispenser	37218	509	60
Mobile Armored Cable Dispenser	37202	509M	60

CONDUIT STORAGE & TRANSPORT

Conduit Bundler with casters		507	61
Conduit Rack	668	505	61
Pipe/Conduit Transporter	36745	508	62

Description	T&B® Item #	Burndy® Item #	Current Tools Item #	Page #
CRIMPING TOOLS				
12-Ton Hand Hydraulic Crimping Tool	JB-12B	Y-35	12MC	63
14-Ton Hand Hydraulic Crimping Tool	TBM-14M	Y-750 12-Ton	14MC	63
12-Ton Remote Hydraulic Crimping Tool	TBM-12	Y-35BH	12RH	64
14-Ton Univ. Remote Hyd. Crimping Tool	TBM-13100A	Y-750BH 12-Ton	14RH	64
15-Ton Univ. Remote Hyd. Crimping Tool	TBM-15PF	Y-45	15RH	65
Hydraulic Power Pump	13600	EPP-10	1ACP	65

Burndy® is a registered trademark of Framatome Connectors International.

T&B® is a registered trademark of Thomas & Betts Corporation.

Greenlee® is a registered trademark of Greenlee/Extron.



Current Tools
FOR THE PROFESSIONAL ELECTRICIAN

www.currenttools.com

P.O. Box 17026 • Greenville, SC 29606 • 864.244.1201 • fax 864.244.5860 • 800.230.5421

COMPARISON REFERENCE



Description	Greenlee® Item #	Current Tools Item #	Page #
PULLING ACCESSORIES			
Line Swivel – 750 lbs.		00505-005	66
Line Swivel – 2,250 lbs.	39106	00505-010	66
Line Swivel – 3,500 lbs.		00505-015	66
Line Swivel – 5,000 lbs.	39107	00505-020	66
Line Swivel – 7,000 lbs.	39108	00505-025	66
Line Swivel – 9,000 lbs.		00505-027	66
Line Swivel – 10,000 lbs.	39109	00505-030	66
Line Swivel – 15,000 lbs.	39110	00505-035	66
Line Swivel – 30,000 lbs.	39111	00505-040	66
Line Swivel – 50,000 lbs.		00505-045	66
Wire Grip Swivel – 10,000 lbs.		00501-010	66
Wire Grip Swivel – 25,000 lbs.		00501-025	66
Breakaway Swivel	39290	00550-005	67
Breakaway Swivel	39298	00550-010	67
Breakaway Swivel		00550-020	67
Breakaway Pin Kits – 200 lbs.	39294	00555-002	67
Breakaway Pin Kits – 340 lbs.		00555-034	67
Breakaway Pin Kits – 400 lbs.	39295	00555-004	67
Breakaway Pin Kits – 450 lbs.		00555-0045	67
Breakaway Pin Kits – 600 lbs.	39296	00555-006	67
Breakaway Pin Kits – 675 lbs.	39297	00555-007	67
Breakaway Pin Kits – 200 lbs.	39302	00535-002	67
Breakaway Pin Kits – 400 lbs.	39303	00535-004	67
Breakaway Pin Kits – 600 lbs.	39304	00535-006	67
Breakaway Pin Kits – 800 lbs.	39306	00535-008	67
Breakaway Pin Kits – 1,000 lbs.	39308	00535-010	67
Breakaway Pin Kits – 1,800 lbs.		00555-018	67
Breakaway Pin Kits – 2,000 lbs.		00555-020	67
Can-Link Connector – 2,500 lbs.		00520-010	68
Can-Link Connector – 5,000 lbs.		00520-020	68



COMPARISON REFERENCE

Description	Greenlee® Item #	Current Tools Item #	Page #
Can-Link Connector – 9,000 lbs.		00520-027	68
Can-Link Connector – 15,000 lbs.		00520-035	68
Rope to Swivel Connector – 7,000 lbs.		00522-025	68
Rope to Swivel Connector – 15,000 lbs.		00522-035	68
Pulling Harness Kit	629	2500	69
Pulling Harness Kit	624	2501	69
Double Leg – short	624S	2500-2	69
Double Leg – long	624L	2500-1	69
Clevis	678	2502	69
Pulling Grips – 400 lbs. single weave, single eye	30596	00661-004	71
Pulling Grips – 460 lbs. single weave, single eye	30584	00661-006	71
Pulling Grips – 860 lbs. single weave, single eye	30586	00661-010	71
Pulling Grips – 1,250 lbs. single weave, single eye	30588	00661-013	71
Pulling Grips – 1,790 lbs. single weave, single eye	30590	00661-016	71
Pulling Grips – 2,580 lbs. single weave, single eye	30592	00661-019	71
Pulling Grips – 4,090 lbs. single weave, single eye	30594	00661-025	71
Pulling Grips – 2,500 lbs. non-conductive, sgl weave/sgl eye		00662-010	71
Pulling Grips – 3,700 lbs. non-conductive, sgl weave/sgl eye		00662-020	71
Pulling Grips – 9,800 lbs. non-conductive, dbl weave/sgl eye		00664-030	71
Pulling Grips – 11,800 lbs. non-conductive, dbl weave/sgl eye		00664-040	71
Pulling Grips – 4,250 lbs. double weave, single eye		00670-025	71
Pulling Grips – 5,000 lbs. double weave, single eye	30536	00670-038	71
Pulling Grips – 6,600 lbs. double weave, single eye	30540	00670-050	71
Pulling Grips – 10,000 lbs. double weave, single eye	30542	00670-100	71
Pulling Grips – 13,800 lbs. double weave, single eye	30546	00670-125	71
Pulling Grips – 14,200 lbs. double weave, single eye	30548	00670-200	71
Pulling Grips – 17,500 lbs. double weave, single eye	30550	00670-250	71
Pulling Grips – 18,000 lbs. double weave, single eye	30552	00671-080	71
Pulling Grips – 25,000 lbs. double weave, single eye	30554	00671-095	71
Pulling Grips – 2,500 lbs. dbl weave, sgl eye, closed mesh		00674-010	72
Pulling Grips – 3,000 lbs. dbl weave, sgl eye, closed mesh		00674-020	72
Pulling Grips – 5,000 lbs. dbl weave, sgl eye, closed mesh		00674-030	72

Greenlee® is a registered trademark of Greenlee/Textron.



Current Tools
FOR THE PROFESSIONAL ELECTRICIAN

www.currenttools.com

P.O. Box 17026 • Greenville, SC 29606 • 864.244.1201 • fax 864.244.5860 • 800.230.5421

COMPARISON REFERENCE



Description	Greenlee® Item #	Current Tools Item #	Page #
Pulling Grips – 10,000 lbs. dbl weave, sgl eye, closed mesh		00674-040	72
Pulling Grips – 11,000 lbs. dbl weave, sgl eye, closed mesh		00675-050	72
Pulling Grips – 12,000 lbs. dbl weave, sgl eye, closed mesh		00675-065	72
Pulling Grips – 15,000 lbs. dbl weave, sgl eye, closed mesh		00675-080	72
Pulling Grips – 15,000 lbs. dbl weave, sgl eye, closed mesh		00675-095	72
Pulling Grips – 4,100 lbs. dbl weave, sgl eye, split mesh		00678-010	72
Pulling Grips – 4,970 lbs. dbl weave, sgl eye, split mesh		00678-020	72
Pulling Grips – 8,150 lbs. dbl weave, sgl eye, split mesh		00678-030	72
Pulling Grips – 12,100 lbs. dbl weave, sgl eye, split mesh		00678-040	72
Pulling Grips – 16,140 lbs. dbl weave, sgl eye, split mesh		00679-050	72
Pulling Grips – 16,140 lbs. dbl weave, sgl eye, split mesh		00679-065	72
Pulling Grips – 20,170 lbs. dbl weave, sgl eye, split mesh		00679-080	72
Pulling Grips – 23,400 lbs. dbl weave, sgl eye, split mesh		00679-095	72
Pulling Grips – 4,800 lbs. dbl weave, sgl eye, shoulders		00680-025	73
Pulling Grips – 5,800 lbs. dbl weave, sgl eye, shoulders	30558 + 30560	00680-038	73
Pulling Grips – 6,700 lbs. dbl weave, sgl eye, shoulders	30562	00680-050	73
Pulling Grips – 10,000 lbs. dbl weave, sgl eye, shoulders	30564	00680-100	73
Pulling Grips – 16,400 lbs. dbl weave, sgl eye, shoulders	30566	00680-125	73
Pulling Grips – 18,500 lbs. dbl weave, sgl eye, shoulders	30568	00680-200	73
Pulling Grips – 24,500 lbs. dbl weave, sgl eye, shoulders	30570	00680-250	73
Pulling Grips – 24,500 lbs. dbl weave, sgl eye, shoulders	30572	00680-300	73
Pulling Grips – 31,000 lbs. dbl weave, sgl eye, shoulders	30574	00680-350	73
Pulling Grips – 31,000 lbs. dbl weave, sgl eye, shoulders		00680-400	73
Pulling Grips – 6,500 lbs. triple weave, single eye, shoulders		00681-006	73
Pulling Grips – 10,400 lbs. triple weave, single eye, shoulders		00681-012	73
Pulling Grips – 16,000 lbs. triple weave, single eye, shoulders		00681-019	73
Pulling Grips – 25,400 lbs. triple weave, single eye, shoulders		00681-025	73
Pulling Grips – 31,700 lbs. triple weave, single eye, shoulders		00681-032	73
Pulling Grips – 32,000 lbs. triple weave, single eye, shoulders		00681-038	73
Pulling Grips – 44,600 lbs. triple weave, single eye, shoulders		00681-048	73
Pulling Grips – 6,500 lbs. triple weave, rotary head, shoulders	30474	00682-006	74
Pulling Grips – 10,400 lbs. triple weave, rotary head, shoulders	30476	00682-012	74

Greenlee® is a registered trademark of Greenlee/Extron.

www.currenttools.com

P.O. Box 17026 • Greenville, SC 29606 • 864.244.1201 • fax 864.244.5860 • 800.230.5421

Current Tools 
FOR THE PROFESSIONAL ELECTRICIAN



COMPARISON REFERENCE

Description	Greenlee® Item #	Current Tools Item #	Page #
Pulling Grips – 16,000 lbs. triple weave, rotary head, shoulders	30478	00682-019	74
Pulling Grips – 25,400 lbs. triple weave, rotary head, shoulders	30480	00682-025	74
Pulling Grips – 31,700 lbs. triple weave, rotary head, shoulders	30482	00682-032	74
Pulling Grips – 32,000 lbs. triple weave, rotary head, shoulders	30484	00682-038	74
Pulling Grips – 44,600 lbs. triple weave, rotary head, shoulders	30486 + 30502	00682-048	74
Pulling Grips – 5,800 lbs. double weave, rotary head, shoulders	30442 + 30998	00690-038	74
Pulling Grips – 6,700 lbs. double weave, rotary head, shoulders	30460	00690-050	74
Pulling Grips – 13,000 lbs. double weave, rotary head, shoulders	31000	00690-100	74
Pulling Grips – 16,500 lbs. double weave, rotary head, shoulders	30462	00690-125	74
Pulling Grips – 27,000 lbs. double weave, rotary head, shoulders	31002	00690-200	74
Pulling Grips – 33,000 lbs. double weave, rotary head, shoulders	30464	00690-250	74
Pulling Grips – 41,000 lbs. double weave, rotary head, shoulders	31004	00690-300	74
Pulling Grips – 48,000 lbs. double weave, rotary head, shoulders	30466	00690-350	74
Pulling Grips – 48,000 lbs. double weave, rotary head, shoulders	31006 + 30468	00690-400	74
Pulling Grips – 6,800 lbs. double weave, dual wire, shoulders		00695-019	75
Pulling Grips – 14,500 lbs. double weave, dual wire, shoulders		00695-038	75
Pulling Grips – 21,500 lbs. double weave, dual wire, shoulders		00695-063	75
Pulling Grips – 32,000 lbs. double weave, dual wire, shoulders		00695-088	75
Pulling Grips – 48,000 lbs. double weave, dual wire, shoulders		00695-113	75
Pulling Grips – 68,000 lbs. double weave, dual wire, shoulders		00695-138	75
LUBE SPREADER			
Lube Spreader Disc – 2"		00515-200	75
Lube Spreader Disc – 2 1/2"		00515-250	75
Lube Spreader Disc – 3"		00515-300	75
Lube Spreader Disc – 3 1/2"		00515-350	75
Lube Spreader Disc – 4"		00515-400	75
Lube Spreader Disc – 5"		00515-500	75
Lube Spreader Disc – 6"		00515-640	75
Lube Spreader Connector Body – 4,000 lbs.		00510-025	75
Lube Spreader Connector Body – 7,200 lbs.		00510-035	75

Greenlee® is a registered trademark of Greenlee/Extron.



Current Tools
FOR THE PROFESSIONAL ELECTRICIAN

www.currenttools.com

P.O. Box 17026 • Greenville, SC 29606 • 864.244.1201 • fax 864.244.5860 • 800.230.5421

COMPARISON REFERENCE



Description	Greenlee® Item #	Current Tools Item #	Page #
CONDUIT CHECKER			
Conduit Checker – 2"	39265	08500-200	76
Conduit Checker – 2 1/2"	39263	08500-250	76
Conduit Checker – 3"	39261	08500-300	76
Conduit Checker – 3 1/2"	39259	08500-350	76
Conduit Checker – 4"	39257	08500-400	76
Conduit Checker – 5"	39255	08500-500	76
Conduit Checker – 6"	39288	08500-640	76
SPIRAL CONDUIT BRUSHES			
Spiral Conduit Brush – 2"	39274	08000-200	76
Spiral Conduit Brush – 2 1/2"	39276	08000-250	76
Spiral Conduit Brush – 3"	39278	08000-300	76
Spiral Conduit Brush – 3 1/2"	39280	08000-350	76
Spiral Conduit Brush – 4"	39282	08000-400	76
Spiral Conduit Brush – 5"	39284	08000-500	76
Spiral Conduit Brush – 6"	39286	08000-600	76
STORAGE BOXES			
Storage box 48"L x 30"H x 30"D	3048	101	77,78
Storage box 31"L x 15"H x 18"D	1531	104	77,78
Storage box 23"L x 17"H x 20"D	23818	8-0501	77,78
Casters – 6" (2 swivel, 2 fixed)	695	506	78

Greenlee® is a registered trademark of Greenlee/Textron.

www.currenttools.com

P.O. Box 17026 • Greenville, SC 29606 • 864.244.1201 • fax 864.244.5860 • 800.230.5421

Current Tools 
FOR THE PROFESSIONAL ELECTRICIAN



COMPARISON REFERENCE

Description	Greenlee® Item #	Current Tools Item #	Page #
OTHER GOOD STUFF			
Chain Vise Stand		9900	79
General Purpose Poly Rope - 1/4" x 300'	412	GPR143	81
General Purpose Poly Rope - 1/4" x 600'	413	GPR146	81
General Purpose Poly Rope - 1/4" x 1,200'	414	GPR1412	81
General Purpose Poly Rope - 3/8" x 300'	417	GPR383	81
General Purpose Poly Rope - 3/8" x 600'	418	GPR386	81
Description	RIDGID® Item #	Current Tools Item #	Page #
THREADER STANDS			
Rolling Stand with tray	150A	524	80
Rolling Stand with tray	150A	524W	80
Rolling Stand with storage box	200A	526	80
Rolling Stand with storage box	200A	526W	80
Adapter Set — for 524 or 526 Rolling Stand	58007	528	80

Greenlee® is a registered trademark of Greenlee/Textron.
 RIDGID® is a registered trademark of Ridge Tool Co.



Current Tools
 FOR THE PROFESSIONAL ELECTRICIAN

www.currenttools.com

P.O. Box 17026 • Greenville, SC 29606 • 864.244.1201 • fax 864.244.5860 • 800.230.5421