

# Server, Storage & Integrated Systems Family Guide

Your fast lane to PRIMERGY / PRIMEQUEST servers, ETERNUS storage and PRIMEFLEX Integrated Systems

The Fujitsu logo is positioned in the top right corner of the image. It consists of the word "FUJITSU" in a bold, red, sans-serif font, with a red infinity symbol above the letter "J".

FUJITSU



shaping tomorrow with you



Be flexible.  
With the right  
foundation.

FUJITSU Server Systems



Rely on  
Quality



Rely on  
Efficiency



Rely on  
Agility



Rely on  
Integration



# FUJITSU Server Products

## Servers for the data-driven world

FUJITSU Server systems provide the most powerful and flexible data center solutions for companies of all sizes, across all industries and for any type of workload. This includes expandable PRIMERGY tower servers for remote and branch offices, versatile rack-mount servers, as well as density-optimized scale-out servers. They convince by business proven quality with a wide range of innovations, highest efficiency cutting operational cost and complexity, and provide more agility in daily operations in order to turn IT faster into a business advantage.

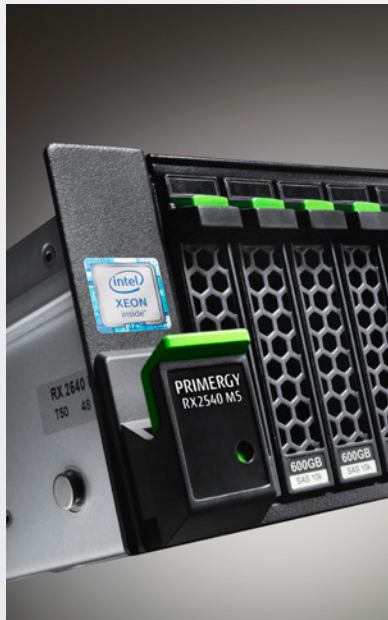
### Optimized x86 server portfolio to power any workload and business demand

Perfect for SMB's, branches and office environments



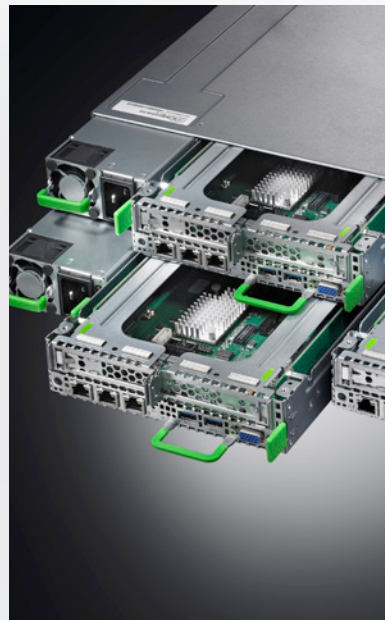
Robust and cost-efficient servers characterized by simple and quiet operations

Core Business and Data Demanding Applications



Versatile rack servers with leading efficiency and performance

HPC, Cloud, Technical Computing and Deep Learning



Modular and density-optimized servers to scale efficiently

Business and Mission-critical environments



Business continuity for permanent data access and use cases such as in-memory computing

Operation and Management



Efficient operation and management of IT infrastructures and equipment



# FUJITSU Server PRIMERGY Tower and Rack Systems

## The efficient, flexible foundation for business growth

Quickly changing business requirements need an IT infrastructure that guarantees maximum productivity, cost efficiency, agility and are easy to integrate in any existing environment. Be it a department server or a large data center solution, FUJITSU Server PRIMERGY systems and solutions can meet these requirements for companies of all sizes and provide a cost-effective and adaptable range of services.

### PRIMERGY TX Server



Type	Specifications	Products	Processor	Memory	Storage	
Mono	Essential Workloads Compact	4 PCI slots / up to 4 x HDDs 1x standard power supply	<b>TX1310 M3</b>	Intel® Xeon® E3v6, Core i3®, Pentium®, Celeron®	4 – 64 GB 4 DIMM DDR4	4 x 3.5" SATA
	Standard Workloads Ultra-compact	4 PCI slots / up to 8 x HDDs/SSDs Hot-plug power supply	<b>TX1320 M4</b>	Intel® Xeon® E-2200/ E-2100, Core i3®, Pentium®, Celeron®	4 – 128 GB 4 DIMM DDR4	2 x 3.5" SATA or 8 x 2.5" SATA/SAS
	Redundancy	4 PCI slots / up to 24 x HDDs/SSDs Redundant fans/ Hot-plug PSU	<b>TX1330 M4</b>	Intel® Xeon® E-2200/ E-2100, Core i3®, Pentium®	4 – 128 GB 4 DIMM DDR4	12 x 3.5" SATA/SAS or 24 x 2.5" SATA/SAS
Dual	High Workload Versatility Performance + Scalability	8 PCI slots / up to 32 x HDDs/SSDs Redundant fans/ Hot-plug PSU	<b>TX2550 M5</b>	1-2 x Intel® Xeon® Scalable Family	8 GB– 768 GB /1.5TB 12 DIMM DDR4/DCPMM	12 x 3.5" SATA/SAS or 32 x 2.5" SATA/SAS

### PRIMERGY RX Server



Type	Specifications	Products	Processor	Memory	Storage	
Mono	1U (3 x PCI slots, 10 x HDDs)	<b>RX1330 M4</b>	Intel® Xeon® E-2200/ E-2100, Core i3®, Pentium®	4 – 128 GB 4 DIMM DDR4	4 x 3.5" SATA/SAS or 10 x 2.5" SATA/SAS	
Dual	Essential performance Height units / scalability	2U / high 6 x PCI slots, up to 24 x HDDs/SSDs	<b>RX2520 M5</b>	1-2 x Intel® Xeon® Scalable Family	4 – 768 GB 12 DIMM DDR4	12 x 3.5" SATA/SAS or 24 x 2.5" SATA/SAS
	Max. performance Height units / scalability	1U / high 4 x PCI slots, 10 x HDDs/SSDs	<b>RX2530 M5</b>	1-2 x Intel® Xeon® Scalable Family	8 GB– 3 TB/7.5TB 24 DIMM DDR4/DCPMM	4 x 3.5" SATA/SAS or 8x/10x 2.5" SATA/SAS/PCIe
	Max. performance Height units / scalability	2U / very high (8 x PCI slots, up to 28 x HDDs/SSDs)	<b>RX2540 M5</b>	1-2 x Intel® Xeon® Scalable Family	8 GB– 3 TB/7.5TB 24 DIMM DDR4/DCPMM	12x 3.5" SATA/SAS or 28 x 2.5" SATA/SAS/PCIe
Quad	Max. memory expansion 2U/ 8 x PCI slots, up to 16x HDDs/SSDs	<b>RX4770 M5</b>	2-4 Intel® Xeon® Scalable Family	16 GB – 6 TB/15TB 48 DIMM DDR4/DCPMM	16 x 2.5" hot-plug SAS/SATA/PCIe	

# FUJITSU Server PRIMERGY Scale-out Systems

## Platform for cloud, HPC, and large scale-out computing

FUJITSU Server PRIMERGY CX scale-out systems are built for cloud computing scenarios, high performance computing, service providers and large server farms. They focus on providing large datacenters with massive scale-out x86 server power while at the same time delivering best economics for server density, energy consumption, heat optimization and lower overall operational costs.

### Workload-specific power in a compact and modular form factor

The PRIMERGY CX400 M4 is a modular enclosure for the Fujitsu scale-out ecosystem that combines the density and efficiency of blade-like servers with the simplicity and cost benefits of rack-based systems.

#### PRIMERGY CX Servers



Use Cases	Specifications	Products	Processor	Memory	Details	
<ul style="list-style-type: none"> <li>■ VDI</li> <li>■ Virtualization</li> <li>■ Cloud</li> <li>■ Web Services</li> <li>■ HPC</li> <li>■ Technical Computing</li> <li>■ AI</li> <li>■ Deep Learning</li> </ul>	Chassis	2U / up to 24 x 2.5" storage drives Redundant, hot-plug components	<b>CX400 M4</b>	-	4 bays for nodes Shared infrastructure	
	Server Nodes	Cloud/HPC optimized server node	<b>CX2550 M5</b>	1-2 x Intel® Xeon® Scalable Family	8 - 2048 GB 16 DIMM DDR4/DCPMM	Cost-optimized Air- or liquid cooling
		All-round server node	<b>CX2560 M5</b>	1-2 x Intel® Xeon® Scalable Family	8 - 2048 GB 16 DIMM DDR4/DCPMM	6x 2.5" storage drives DynamicLoM + 2x PCIe, air-cooled
		HPC/VDI optimized server node	<b>CX2570 M5</b>	1-2 x Intel® Xeon® Scalable Family	8 - 2048 GB 16 DIMM DDR4/DCPMM	Up to 4x GPU's Air- or liquid cooling

### Traditional Values. Innovative Success.

#### QUALITY

Business-proven quality ensures continuous operation with almost no unplanned downtimes



#### EFFICIENCY

Highest efficiency cuts cost, accelerates IT workloads to shorten time-to-business results



#### AGILITY

More agility in daily operations helps to turn IT faster into a business advantage



#### INTEGRATION

Seamless integration in heterogeneous environments cut operational cost and complexity



# FUJITSU Server PRIMEQUEST Systems

## Scalable platform for business-critical and mission-critical applications

Fujitsu Server PRIMEQUEST systems offers unprecedented x86 performance and memory expandability for resource-intensive applications. By uniting the x86 industry standards with mission-critical features, PRIMEQUEST systems delivers availability levels similar to those of UNIX systems – but with the cost advantages of an x86-based architecture.

### Superior performance and reliability for business-critical workloads with optimized economics

Featuring the latest Intel® Xeon® Processor Scalable Family with up to 28 cores per processor and fastest available DDR4 memory modules with memory capacity of up to 24TB (DDR4 only) or 36TB with Intel® Optane™ DC Persistent Memory, the PRIMEQUEST 3800B2 significantly improves performance for in-memory databases such as SAP HANA® and real-time data analytics, thereby making it the right choice for the most complex business-critical workloads in big data processing environments.

### PRIMEQUEST 3800B2



Type	Use Cases	Products	Processor	Memory	Storage / PCI	RAS Features
Octo	<ul style="list-style-type: none"> <li>Business-critical applications</li> <li>Transaction demanding workloads</li> <li>In-memory databases</li> <li>Real-time data analytics</li> <li>High-density, high-capability virtualization</li> </ul>	PRIMEQUEST 3800B2	Up to 8 x Intel® Xeon® Scalable Family Processor	16 GB - 24 TB / 36 TB 96 DIMM DDR4 / DCPMMM	8 x 2.5" / 16 PCIe slots	SDDC+1, ECC, redundant fans and power supply Intra-socket memory mirroring, MCA, ADDDC-MR

### Redefining mission-critical server architecture

Featuring the latest Intel® Xeon® Platinum processors with up to 28 cores per processor and fastest available DDR4 memory modules with memory capacity of up to 24TB (DDR4 only) or 36TB with Intel® Optane™ DC Persistent Memory, the PRIMEQUEST 3800E2 improves performance for in-memory databases such as SAP HANA® and Microsoft SQL Server 2017, thereby making it the right choice for the most complex mission-critical workloads in big data processing environments.

### PRIMEQUEST 3800E2



Type	Use Cases	Products	Processor	Memory	Storage / PCI	RAS Features
Octo	<ul style="list-style-type: none"> <li>Mission-critical applications</li> <li>Big data applications</li> <li>Unix migration</li> <li>High-volume, high-value workloads such as online transaction processing (OLTP), batch processing, and database applications</li> <li>In-memory databases</li> <li>Real-time data analytics</li> </ul>	PRIMEQUEST 3800E2	Up to 8 x Intel® Xeon® Scalable Family Processor	16 GB - 24 TB / 36 TB 96 DIMM DDR4 / DCPMMM	24 x 2.5" / 16 PCIe slots	Standard - SDDC+1, ECC, redundant fans and power supply Advanced - Intra-socket memory mirroring, MCA, ADDDC-MR Mission Critical - Physical Partition, Extended Partition, Reserved Systemboard, flex IO, Dynamic Reconfiguration, redundant MMB, hot-plug PCIe



# Your Fast Track to Data Center Infrastructures

FUJITSU Integrated System PRIMEFLEX

Watch now!





# FUJITSU Integrated System PRIMEFLEX

## Your Fast Track to Data Center Infrastructures

FUJITSU Integrated System PRIMEFLEX is a pre-integrated and pre-tested combination of servers, storage, network connectivity and software. PRIMEFLEX includes both 'ready to run' systems which are pre-installed at the factory, and customizable reference architectures. This reduces complexity, project time, risk and cost, while increasing operational efficiency. Flexible services options such as consulting, design, on-site deployment, integration into existing environments, migration services and overall support delivered by Fujitsu or its partners enable worry-free operation. Pay-as-you go financing options are also available. FUJITSU Integrated System PRIMEFLEX addresses business-critical use cases, such as virtualization, cloud and SAP environments. All PRIMEFLEX systems are Hybrid IT Enabled.

### Virtualization and Cloud

#### PRIMEFLEX for VMware vSphere

Converged system for deploying VMware vSphere based infrastructure with external all flash or hybrid storage from FUJITSU. It includes multiple configurations varying in size, scales from 2 up to 64 servers and can support 4000+ VMs.

**Compute:** PRIMERGY RX  
**Storage:** ETERNUS DX / AF  
**Network:** Extreme Networks  
**Optional:** Broadcom FC Switches  
**Software:** VMware vSphere  
**Optional:** VMware Horizon  
**Management:** Fujitsu ISM

#### PRIMEFLEX for VMware vSAN

Hyper-converged system based on VMware software-defined server and storage technology delivered by the VMware HCI software stack. The system is available in various vSAN Ready Nodes configurations with pre-installed software scaling from 2 to 64 server nodes.

**Compute / Storage:** PRIMERGY RX / CX  
**Software:** VMware vSphere, vSAN  
**Optional:** VMware Horizon  
**Management:** Fujitsu ISM (optional)

#### PRIMEFLEX for VMware Cloud Foundation

Hyper-converged system for deploying a VMware-based software-defined data center infrastructure. The system is available in various configurations from 4 to 240 server nodes.

**Compute / Storage:** PRIMERGY RX  
**Network:** Extreme Networks  
**Software:** VMware Cloud Foundation  
**Optional:** VMware Horizon, vRealize  
**Management:** Fujitsu ISM (optional)

#### PRIMEFLEX for Microsoft Azure Stack HCI

Hyper-converged system based on Microsoft software-defined server and storage technology integrated in Windows Server 2019. The system is available in various validated and certified configurations scaling from 2 to 16 server nodes.

**Compute / Storage:** PRIMERGY RX  
**Software:** Windows Server 2019 Datacenter Edition (Hyper-V and Storage Spaces Direct)  
**Optional:** Microsoft SystemCenter



# FUJITSU Integrated System PRIMEFLEX

## Your Fast Track to Data Center Infrastructures



### Virtualization and Cloud

#### PRIMEFLEX for Microsoft Azure Stack Hub

PRIMEFLEX for Microsoft Azure Stack Hub is an integrated system that brings the agility and fast-paced innovation of Microsoft's Azure cloud to your on-premises data center.

**Compute:** PRIMERGY RX  
**Network:** Fujitsu PSWITCH  
**Software:** Microsoft Azure Stack Hub  
**Optional:** Microsoft Azure Services  
**Management:** Fujitsu ISM

#### Nutanix Enterprise Cloud on PRIMERGY

A multi-hypervisor infrastructure, Nutanix Enterprise Cloud on PRIMERGY helps customers to reduce complexity and risk in deploying a hyper-converged infrastructure based on the Nutanix Enterprise Cloud software stack.

**Compute:** PRIMERGY  
**Hypervisor:** Choice of AHV or ESXi  
**Operating system:** Acropolis  
**Management:** Prism

### SAP

#### PRIMEFLEX for SAP HANA

SAP-validated infrastructure solution for the SAP HANA® software. It is based on Fujitsu PRIMERGY and PRIMEQUEST servers optimized for in-memory technology. The complementary on-site services ensure a fast and non-disruptive implementation and operation at the customer site.

**Compute:** PRIMERGY / PRIMEQUEST  
**Storage:** ETERNUS / NetApp / TDI support (opt. for single-node)  
**Network:** Broadcom, Cisco (multi-node only)  
**Software:** SUSE or Red Hat Linux / Optional: VMware vSphere

#### PRIMEFLEX for SAP Landscapes

Powered by FlexFrame Orchestrator management software, the set-up of infrastructures optimized for SAP applications and databases is simplified and a more effective operation enabled. The pre-defined, pre-integrated and pre-tested combination of servers, storage, network connectivity and software ensure highest quality and fast time to value.

**Compute:** PRIMERGY / PRIMEQUEST  
**Storage:** NetApp for shared image; ETERNUS / NetApp for database  
**Network:** Cisco  
**Software:** FUJITSU FlexFrame Orchestrator, SUSE Linux  
**Optional:** VMware vSphere, extension packs (e.g. from LNW Soft)



# Storage unchained

FUJITSU ETERNUS Storage



Storage  
Unchained

Watch now!



Transform  
with Flash

Watch now!





# FUJITSU Storage Products

## ETERNUS: Business-Centric Storage

In the storage area you can rely on a well synchronized portfolio – Business-Centric storage at its best from a single provider with more than 50 years experience in storage. Fujitsu provides ETERNUS AF all-flash and ETERNUS DX hybrid storage systems, ETERNUS LT tape libraries and ETERNUS CS data protection appliances, which allow customers to flexibly manage their increasing data volumes at less costs of growth, to benefit from a very reliable architecture as well from radically simplified operation.

### FUJITSU Storage

#### All-flash and Hybrid Storage Systems

Combining leading performance architecture with automated quality of service management the ETERNUS AF and ETERNUS DX systems provide powerful features for digital growth, efficiency and continuity.

#### Data Protection Appliances

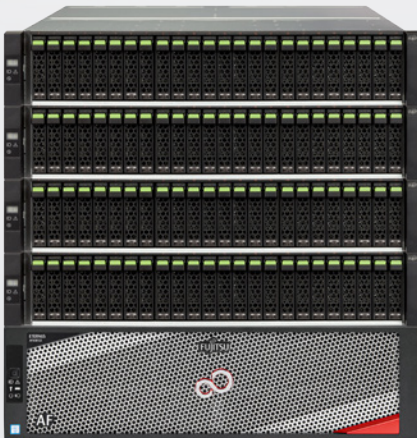
Data protection appliances from Fujitsu simplify your backup and archive infrastructure and transform your IT landscape into a genuine enabler for digital business growth, efficiency and continuity.

#### Tape Storage Systems

The affordable ETERNUS LT tape systems offer impressive scalability and reliability. They meet SMB requirements and are certified for market-leading backup and archiving software.

### FUJITSU Storage ETERNUS

#### ETERNUS AF/DX Family



Leading performance increases system utilization and consolidation resulting in a faster ROI

#### ETERNUS CS Family



ETERNUS CS data protection appliances radically simplify backup and archive infrastructures by aligning storage resources with business priorities.

#### ETERNUS LT Family



Highly automated, simple and remote operation without any demand for local expert skills

# FUJITSU ETERNUS Storage

## Online storage made easy

### ETERNUS AF All-flash arrays



Specifications	Product	Host interfaces	Functions	
Number of Drives	max. 24, 92 TB raw	AF150	8x FC 16G / 8x iSCSI 10G	ETERNUS SF Express
	max. 264, 8,110 TB raw 40,550 TB effective *	AF250	8 x FC 32G / 16 x FC 16G / 8 x iSCSI 10G	All-in FlashPack (Configuration, Management and Administration, Local and Remote Copy, Automated Quality of Service, Deduplication and/or Compression)
	max. 1056, 32,440 TB raw 162,200 TB effective *	AF650	32 x FC 32G / 32 x FC 16G / 16 x iSCSI 10G	

### ETERNUS DX hybrid storage systems



Specifications	Product	Host interfaces	Functions	
Connectivity / Scalability	max. 4 host ports/ 96 drives (672 TB)	DX60	8 / 16 Gbps FC, 1 / 10 Gbps iSCSI, 6 / 12 Gbps SAS	RAID Protection and Redundancy; ETERNUS SF Management Software offers Local Advanced Copy, Thin Provisioning
	None			
Connectivity / Scalability	max. 16 host ports/ 144 drives (4424 TB SSD 2016 TB HDD)	DX100	8 / 16 / 32 Gbps FC, 1 / 10 Gbps iSCSI, 12 Gbps SAS, 1 / 10 Gbps Ethernet	RAID Protection, Encryption and Redundancy; ETERNUS SF Management Software offering Local Advanced Copy, Transparent Failover, Automated Storage Tiering, Automated Quality-of-Service, Thin Provisioning, Deduplication and/or compression on volume base
	max. 16 host ports/ 264 drives (8110 TB SSD 3696 TB HDD)	DX200	8 / 16 / 32 Gbps FC, 1 / 10 Gbps iSCSI, 12 Gbps SAS, 1 / 10 Gbps Ethernet	
	max. 16 host ports/ 576 drives (17695TB SSD 7786TB HDD)	DX500	8 / 16 / 32 Gbps FC, 1 / 10 Gbps iSCSI, 1 / 10 Gbps Ethernet	
	max. 32 host ports/ 1056 drives (32440 TB SSD 14506 TB HDD)	DX600	8 / 16 / 32 Gbps FC, 1 / 10 Gbps iSCSI, 1 / 10 Gbps Ethernet	
	max. 64 host ports / 2304 (70779 TB SSD 31699 TB HDD)	DX900	8/ 16/ 32 Gbps FC, 1/10 Gbps iSCSI	
	max. 384 host ports/ 6912 drives (141558 TB SSD 93312 TB HDD)	DX8900	8 / 16 / 32 Gbps FC, 1 / 10 Gbps iSCSI	
Remote				
Required				

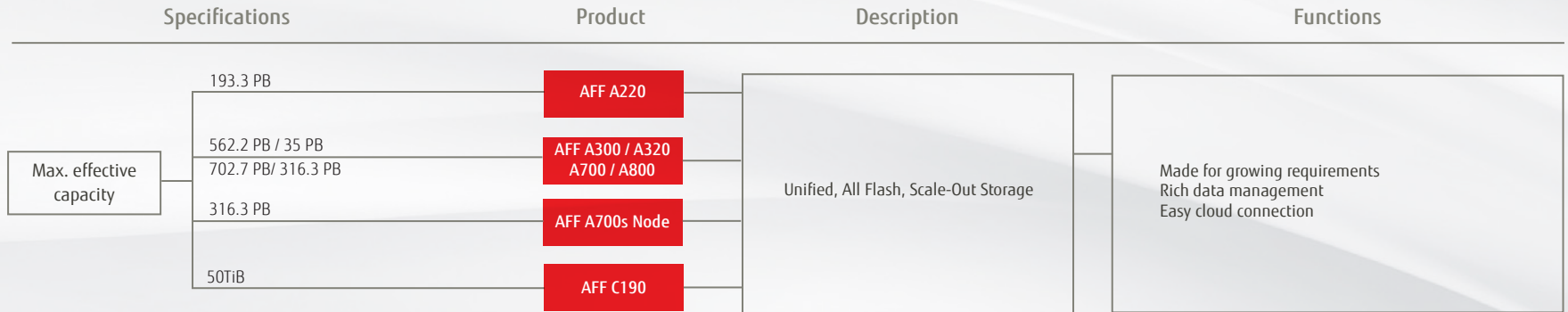
\* Calculation based on deduplication/compression factor of five



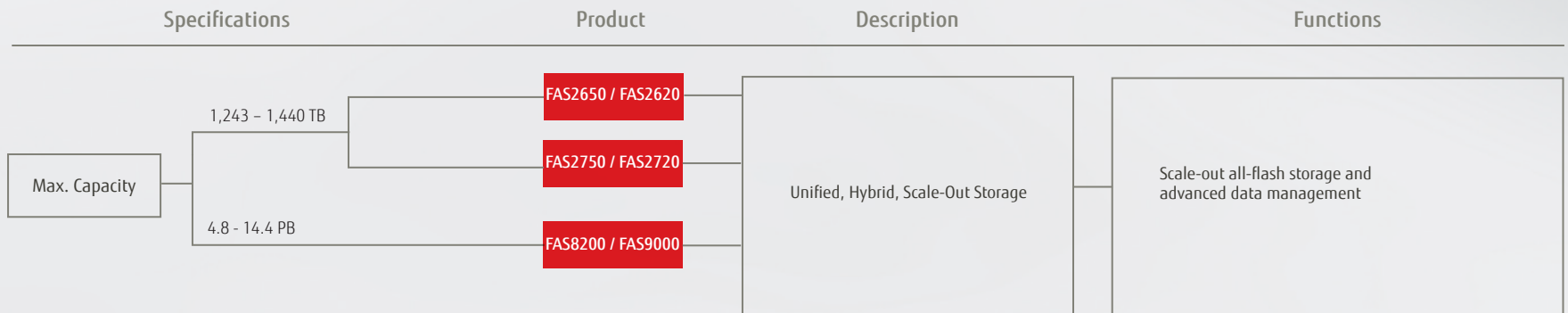
# High Performance Partnership

## Fujitsu & NetApp

### NetApp All-Flash



### NetApp FAS Hybrid storage



# FUJITSU ETERNUS Storage

## Online storage made easy

### Description

### ETERNUS SF at a glance

<p><b>ETERNUS SF - Flexible Data Management</b></p>	<p>The ETERNUS SF storage management software is the uniform management solution for the entire ETERNUS AF and ETERNUS DX series. All essential operations for storage resource management, monitoring, reporting, tiered storage, performance management, disaster resilience and business continuity are integrated. The uniform management for the entire storage infrastructure covers all ETERNUS AF all-flash and ETERNUS DX hybrid storage systems from entry-level through the enterprise as well as virtualized server infrastructures.</p>	<ul style="list-style-type: none"> <li>■ Management of all infrastructure devices based on a unified view</li> <li>■ Visualization of the relations between storage, network and physical servers or virtual servers</li> <li>■ Early detection and elimination of performance issues through performance monitoring</li> <li>■ Reduced initial system infrastructure through thin provisioning</li> <li>■ Support for incident management Hardware investment optimization through automated storage tiering</li> <li>■ Reduced storage system power consumption</li> <li>■ Central management for local and remote replication</li> <li>■ Enhanced business continuity with transparent failover</li> <li>■ Automated Quality-of-Service management</li> </ul>
---	--	--

### Description

### At a glance

### Host Connectivity Options

### Software Version

### Hardware Architecture

### Basic Configuration

<p><b>ETERNUS CD10000 Hyper-scale storage appliance</b></p>	<p>The FUJITSU Storage ETERNUS CD10000 enables you to take care of extreme data growth yourself – and with ease. This hyperscale, software-defined architecture is designed for all environments with huge online data volumes and offers almost unlimited scalability at consistently high levels of performance.</p>	<ul style="list-style-type: none"> <li>■ Nearly unlimited and flexible scalability of capacity and performance</li> <li>■ Fault tolerance and self-healing by design</li> <li>■ Based on Ceph Open Source storage software</li> <li>■ Supports object, file and block storage</li> <li>■ High performance through high parallelism of read and write operations</li> </ul>	<p>Unified: Block, File and Object</p>	<p>Based on Open Source Ceph storage software</p>	<p>Standard PRIMERGY server and network components</p>	<p>4x Basic node +1x Management node</p>
---	--	--	--	---	--	--



# FUJITSU ETERNUS Storage

## Data Protection made easy

### ETERNUS CS800 backup appliance



Specifications	Product	Key Feature	Data Protection Functions	Usability
Usable capacity after data reduction	11-23 TB	CS800 Entry/Scale	Deduplication	Disk-based backup and recovery, replication, path-to-tape, multiprotocol support (NAS, VTL, OST), backup target in the cloud
	27-315 TB			
	102-1020 TB	CS800 Enterprise		Easy setup in just a few steps, automated operation, simple user interface for maintenance and analytics

### ETERNUS CS8000 Central storage for backup, archive, second-tier and object data



Specifications	Product	Backup	Archive	
Architecture	Branch-office backup	CS8050	VTL, VTL with Dedup 14 TB (up to 1 back-end tape library)	NAS protocol for CS8050 only with dedicated CS8050 NAS model (see archive appliance)
	Scale-up backup Scale-up archive	CS8200	VTL, VTL with Dedup 19 TB - 6 PB (up to 10 back-end tape libraries)	NAS (NFS / CIFS), Object 19 TB - 6 PB
	Scale-out backup and/or archive	CS8400 / CS8800	single-site split-site	VTL, VTL with Dedup, NAS (NFS / CIFS), Object 19 TB - 96 PB (up to 10 back-end tape libraries)

### ETERNUS CS8050 NAS archive appliance



Specifications	Product	Description	Data Protection Functions	
Usable capacity	28, 42, 56, 70 TB	CS8050 NAS	Reliable, cost-efficient storage appliance for archiving and second-tier file storage	Archiving; integrated, snapshot-based backup; recovery; replication; SoftWORM

### ETERNUS LT tape storage systems



Specifications	Product	Interface	Max. drives	Description	
No of slots / max. capacity (native)	8 slots / up to 96 TB	LT20 S2	SAS or FC	1	LTO 6/ LTO 7/ LTO 8 drive with 20 TB (LTO-6) or 48 TB (LTO-7) or 96 TB (LTO 8) capacity native
	20 - 280 slots/ up to 3360 TB	LT140	SAS or FC	21	LTO 6/ LTO 7/ LTO 8 drive with 700 TB (LTO-6) or 1680 TB (LTO-7) or 3360 TB (LTO 8) capacity native
	80 - 560 slots / up to 6720 TB	LT260	SAS or FC	42	LTO 6/ LTO 7/ LTO 8 with 1400 TB (LTO-6) or 3360 TB (LTO-7) or 6720 TB (LTO 8) capacity native

# FUJITSU Eco-system with partners

## Data Protection made easy

### Fujitsu Reference Architecture



	Specifications	Product	Description	Data Protection Functions
Usable capacity	Up to 288 TB	Reference Architecture for Commvault HyperScale™ Software	Fully-tested, easy-to-set-up data protection solution for backing up and archiving data in physical, virtual or cloud-based data centers	Backup & recovery, deduplication, compression, encryption, archiving, application support, snapshot, replication, tape and cloud backup

### Commvault Appliance



	Specifications	Product	Description	Data Protection Functions
Usable capacity	4.5, 14.5 TB	RO1100	Integrated backup appliance for Remote / Branch Offices	Backup & recovery, deduplication, compression, encryption, archiving, application support, snapshot, replication, tape and cloud backup
	29, 43, 58, 87 TB	HS1300	All-in-one backup appliance provides mid-sized to large environments with a customizable, self-contained solution for professional backup	
	174, 262 TB	HS3300		

### Veritas NetBackup Appliance



	Specifications	Product	Description	Data Protection Functions
Usable capacity	2 TB	NBU Virtual Appliance	Integrated backup appliance for Remote / Branch Offices	Backup & recovery, deduplication, compression, encryption, archiving, application support, snapshot, replication, tape and cloud backup
	4 – 27, 53 – 297 TB	NBU 5240	All-in-one backup appliance provides mid-sized to large environments with a customizable, self-contained solution for professional backup	
	120 – 1920 TB	NBU 5340		

#### Commvault Data Platform

Simplifies an IT organizations ability to manage data across its lifecycle with integrated modules for Backup & Recovery, Archive, Replication, Analytics and more. Commvault HyperScale™ Software is a powerful, cloud-ready solution bringing scale-out infrastructure to the Commvault Data Platform.

#### Veritas NetBackup

Simplifies the protection of your information-driven enterprise by automating advanced technologies and standardizing operations across applications, platforms and virtual environments.

#### Veritas EnterpriseVault

The industry's most widely-deployed archiving solution, is a platform that bridges the gap between legal and IT by adding intelligence to the way organizations store, manage and discover information.



How Fujitsu  
helps you to  
keep everything  
run smoothly



# FUJITSU Software Infrastructure Manager (ISM)

## Enables the path to a software defined data center

FUJITSU Software Infrastructure Manager (ISM) enables organizations to drive towards the path of achieving software defined infrastructure, by automating and simplifying infrastructure operations across compute, storage and networking.

### FUJITSU Software Infrastructure Manager

Product highlights include:

1. Converged management: Simplified IT operations and consistent management across server, storage and networking
2. Increased agility: Intuitive software providing actionable insights leading to reduced customer response time
3. Accelerate growth and innovation: Streamlined delivery of IT services to speed the transition to hybrid cloud

Designed the way people work, ISM provides an integrated view and centralized control over heterogeneous environment.

#### Control IT – Centralized, easy, efficient

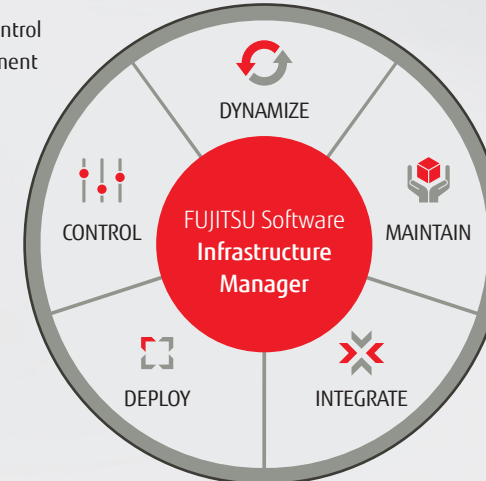
- Node Management
- Health status Monitoring and Control
- Capacity / Threshold Management
- Power Management

#### Dynamize IT – Simple, sophisticated, efficient

- Converged Management
- Auto Discovery
- Virtual-IO Management
- Network topology Management

#### Maintain IT – in any state, at any place

- Remote Management
- Update Management
- Logging and Auditing



#### Deploy IT – Fast, easy, reliable

- Automate device configuration
- Mass OS installation

#### Integrate IT – Seamless, manage, uniformly

- in Enterprise Management
- in vendor specific Management
- Monitor 3<sup>rd</sup> party platforms

### ISM offers flexible options to meet different business needs

#### ISM Advanced

- Fully featured advanced version that provides infrastructure management across multiple data center
- Also monitors 3<sup>rd</sup> party vendor devices in addition to integrating into VMware, Microsoft System Center, and Ansible environments.

#### ISM Essential

- Provides a quick start to efficient infrastructure management with converged monitoring and management capabilities free-of-charge
- Provides an easy upgrade path to ISM Advanced license



# FUJITSU Software Infrastructure Manager (ISM)

## Enables the path to a software defined data center

Servers - Storage - Networking

### ISM Advanced

#### DEPLOY

- Automate device configuration
- Mass OS installation

#### CONTROL

- Node management
- Health status
- Event management
- Capacity/Threshold mgmt
- Group power capping
- Power consumption
- Inventory management

#### MAINTAIN

- Update management
- Firmware baseline
- Logging and Auditing
- Performance management
- Archive management

#### DYNAMIZE

- Dashboard
- Auto discovery
- Virtual-I/O management
- Network topology management

#### INTEGRATE

- In Enterprise mgmt
- In vendor specific management
- 3rd party platforms (monitoring only)

ISM Essential is a standard version of ISM, providing essential monitoring and update capabilities

### ISM Essential

#### CONTROL

- Node management
- Health status
- Event management
- Capacity/ Threshold mgmt
- Power consumption
- Inventory management

#### MAINTAIN

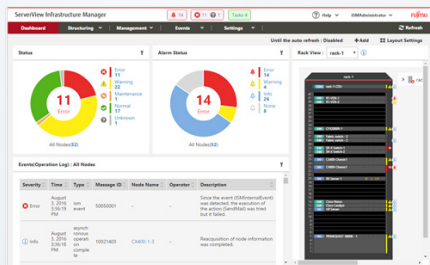
- Update management
- Logging and auditing
- Performance management

#### DYNAMIZE

- Dashboard
- Auto discovery



Get started with ISM Essential:  
 >> Download for free



More information on ISM: <http://www.fujitsu.com/infrastructuremanagement>

Upgrade option available

Published by

## **Fujitsu Technology Solutions GmbH**

Mies-van-der-Rohe-Str. 8, D-80807 Munich  
Copyright 2019 FUJITSU LIMITED  
Printed in Germany  
Contact: [ts.fujitsu.com/contact](https://ts.fujitsu.com/contact)

All rights reserved, including intellectual property rights. Technical data subject to modifications and delivery subject to availability. Any liability that the data and illustrations are complete, actual or correct is excluded. Designations may be trademarks and/or copyrights of the respective manufacturer, the use of which by third parties for their own purposes may infringe the rights of such owner. Intel, the Intel logo, the Intel Inside logo and Xeon are trademarks of Intel Corporation in the U.S. and/or other countries.

