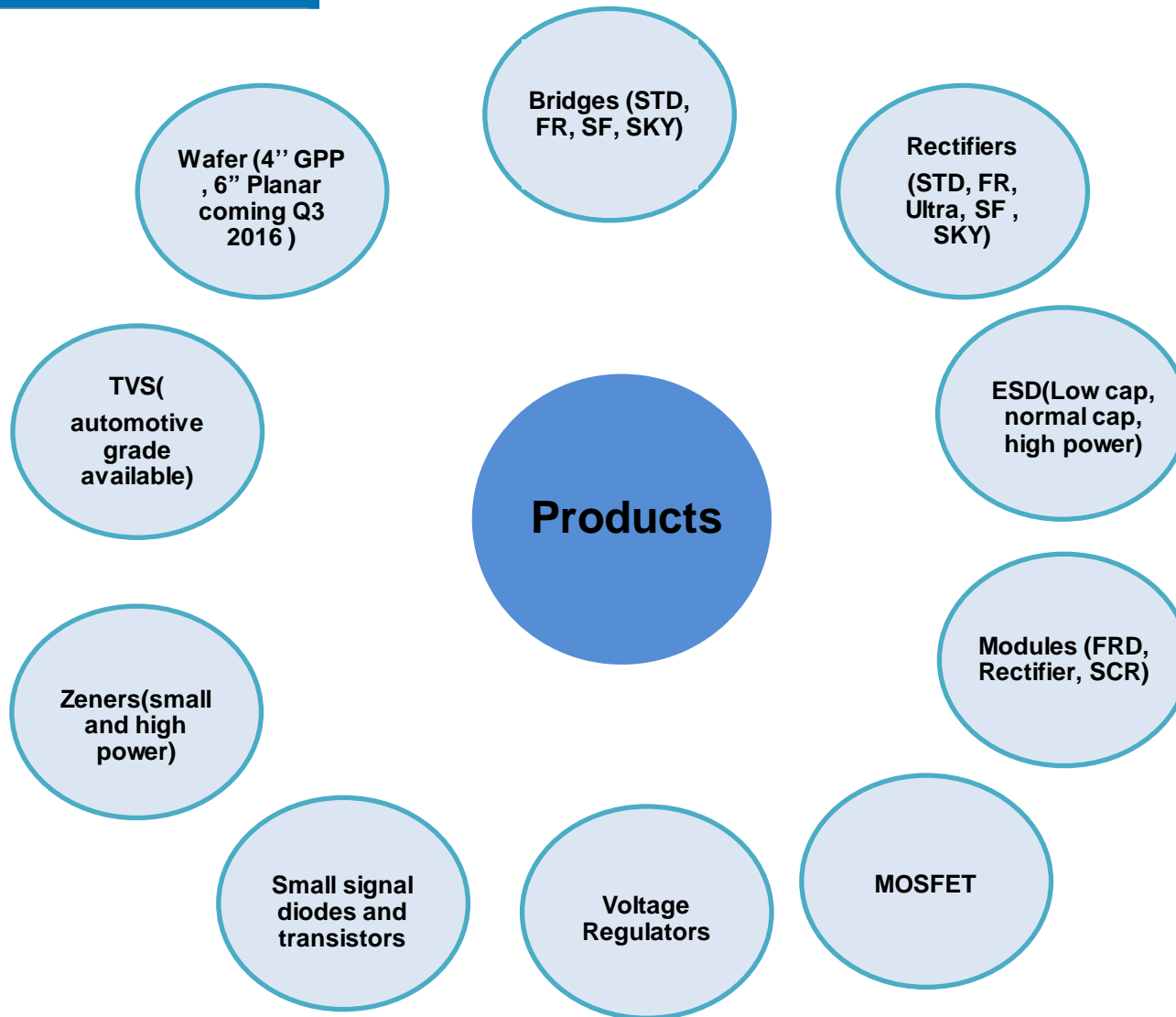




**COMPLETE DISCRETE SEMICONDUCTOR
SOLUTIONS POWERED BY SERVICE**

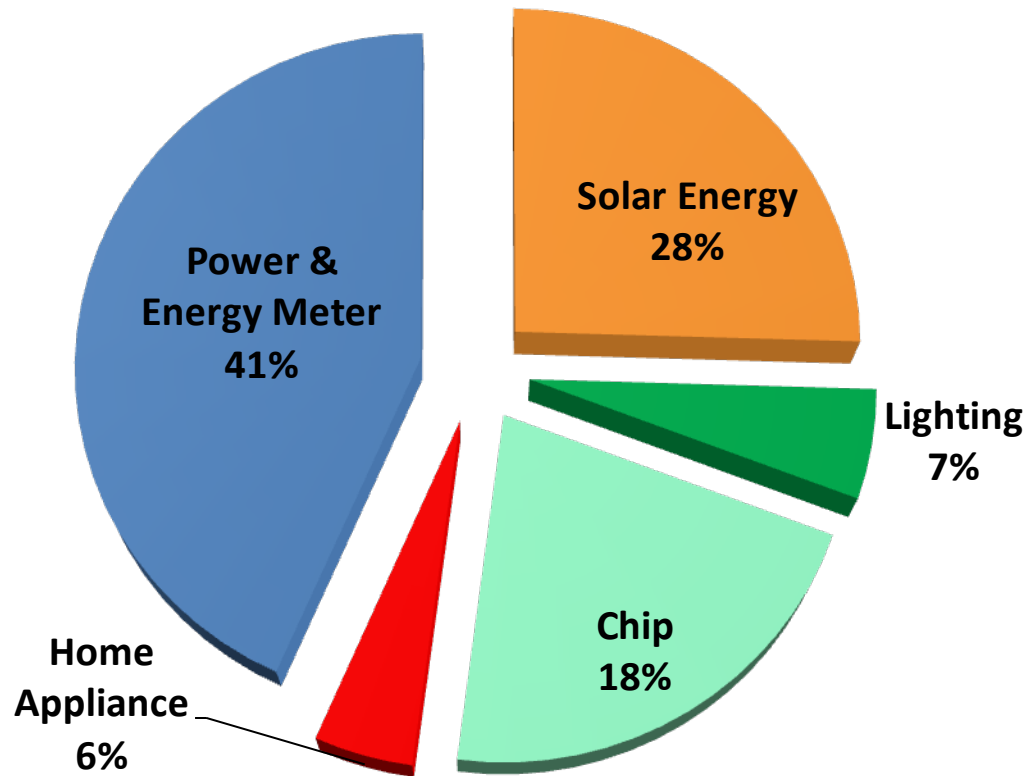


YJ products and applications introduction





Application Fields Summary





Typical Applications

1. Lighting

Main Parts:

(Bridge Rectifiers, Power MOSFET, TVS, Sky, Transistor, Super & Ultrafast)

MB10S, LMB10S, TBS20M, TBS22M, UD3KB100, UD4KB10, GBU4M, GBU8M, GBU10M, GBJ2510, P6KE440CA, GS1M-L, P6KE200A, 1N4148X, MMSZ52XX, SS14E, SS110E, SMD1150PL, SK34, SK54, SK3200, SK4200L, SK5200L, SR5200, UFM14PL, SFM18PL, US1M, ER3D, MURS3D, MURS4D, MUR460G, SD05C, BAW56, MMBTA05, MMBTA55, MCD04N60, MCD04N65, S12302, TL431



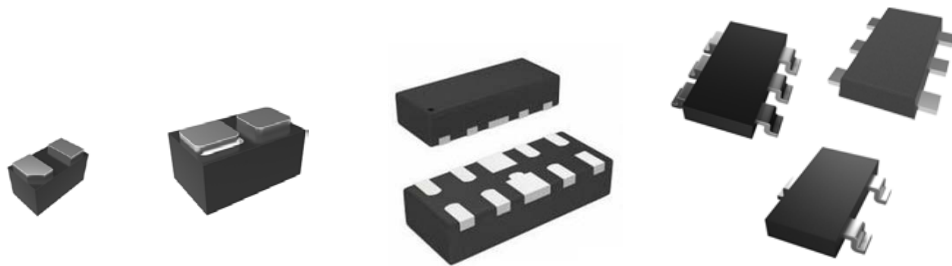


2. Interface protection:

Main Parts

(USB2.0/3.0, Audio, Video,
HDMI,Antenna,Ethernet,eSATA,MicroSD,MDDI,MHL,RS485)

ESD5V0P6,ESD7V0P6,ESD3V3D9,
ESDSL5V0LB,ESDLC0524DFN10,ESDLC5V0L6,
SRV05-4,SM712,ESDSL3V3D3B,ESDSL5V0D3B,SD05C,
LC03-3.3, ESD5V0P6,ESD7V0P6,ESD3V3D9,



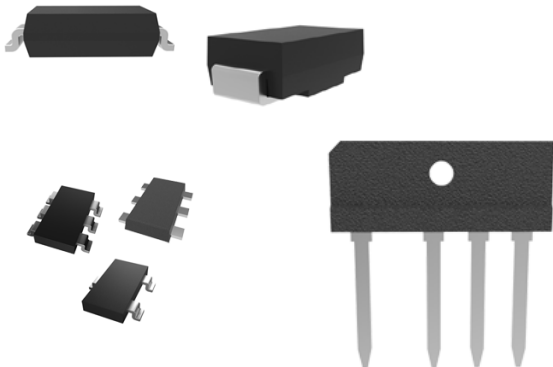


扬杰科技
YANGJIE TECHNOLOGY

3. Home appliance:

Main Parts: (Bridge, ultrafast, TVS, Zener, Sky)

GBU6J, GBU10M, GBJ1510, GBJ2006, GBJ2506, 1N4936, GS1M-L, US1M, P6KE200A, P6KE350CA, P6KE510A, 1N4148W, MMBT2907A, BC817-40, 1N4742AP, SK310, TL431, ES1J-L, MUR460G, RL207, MBR10150FCT, MBR20200CT, 3EZ5.1D5, SM5819PL, TIP127, MC7805CT, RB751S-40, SR306, MMBT2222A, MMBT4401, MMBT4403, GS1M-L, SMBJ26A, BZT52B5V1,

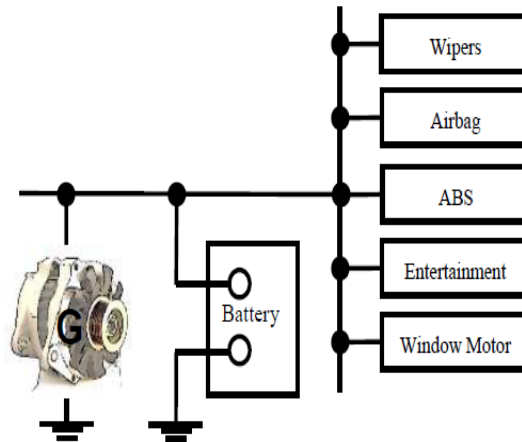
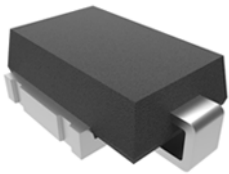




4. Car Audio:

Main Parts:
(TVS, Sky, diode, ESD)

SM5S22A, SM5S33A, SM5S36A, SM8S22A, SM8S33A, SM8S36A, SK34A-L, SM5818PL,
ESDLC0524DFN10, GS1J-L, BAW56,MMBT2222A





扬杰科技
YANGJIE TECHNOLOGY

5. Base Station:

**Main Parts:
(TVS)**

AK3-076C,AK3-380C,AK3-430C,AK6-380C,AK6-430C, AK10-380C,AK10-430C,





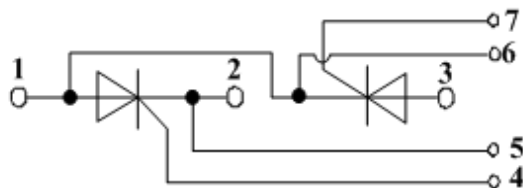
6. Grid

(Reactive Power Compensation)

Keywords:

(SCR Power Modules,)

MT25C16T1, MT40C16T1, MC60C16T1, MC90C16T1, MT25CB16T1,
MT40CB16T1, MT60CB16T1, MT90CB16T1, MT110CB16T1, MT130C16T2,
MT200C16T2, MT300CB16T2, MT160CB16T2, MT200CB16T1





7. Wearable Device:

Main Parts: (ESD, Sky,)

ESDSL5V0LB(0.26pf)----DFN1006

ESDD5V0AE1(3pf)----0201

ESDBV5V0AE1(10pf)---0201

RB520S-30DP----0201

RB521S-30DP----0201

RB751S-40DP----0201





8. Industrial

(Inverter ,Motor , UPS , Welding, Smart Meter)

Main Parts:

(ESD, Power Module, FRED, TVS)

SM712,ESDSL5V0D3B,MF200DU06FJ, MF150C06F2~MF300U12F2,
MF200K04F3~MF400K06F3,MF200K04F4~MF200K06F4,GBJ1510, GBJ2510, GBJ3510,
MT3516, MT5016,MD36A/C/K16D1~MD120A/C/K16D1,
MD165A/C/K16D2~MD240C16D2,MD75S16M2~MD100SM2,
MD100S16M3~MD200S16M3,MD75S16M4~MD100S16M4,MD100S16M5~MD250S16M5,



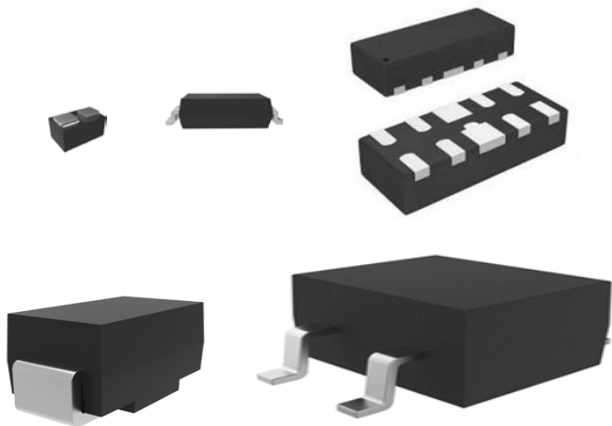


9. Security

Keywords:

(ESD, TVS, Bridge, Ultrafast, Sky)

SM712,ESDSL5V0D3B,ESDLC0524DFN10, ESDSL5V0LPB,LC03-3.3, SRV05-4L,
SMAJ58CA,SMBJ33A,MB6S, MB110S, UFM15PL, SM5817PL,SMBJP6KE6.8CA,



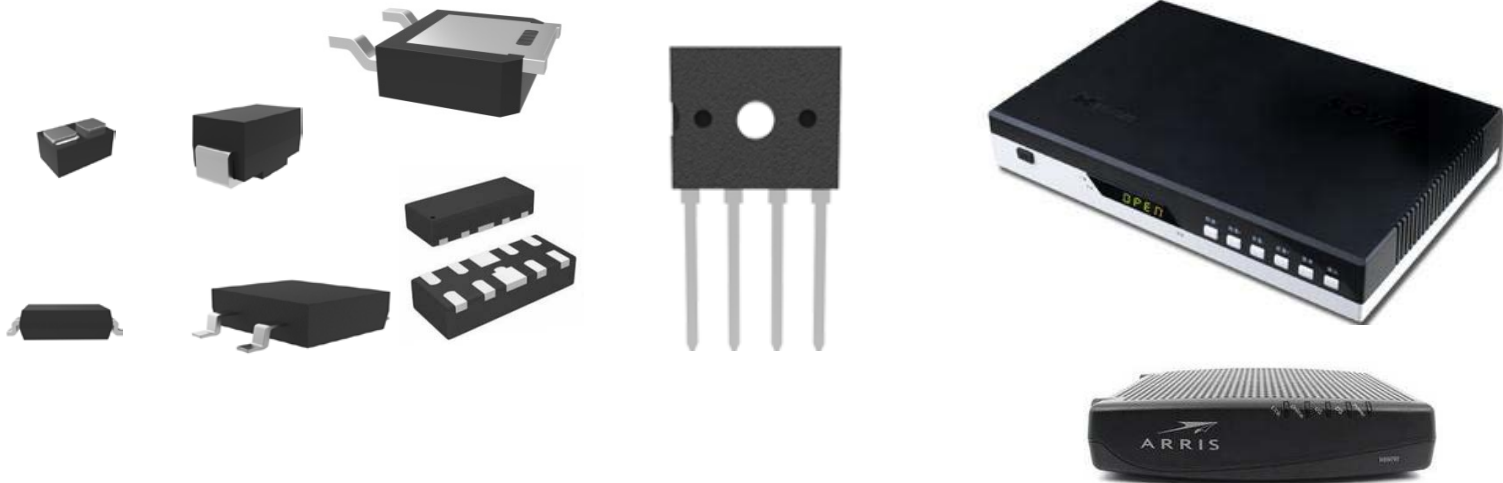


10. Set-Top Box/Cable Modem

Main parts:

(ESD, TVS, Bridge, Ultrafast, Sky)

ESDLC0524DFN10, SRV05-4L, ESDSLC5V0LB, SMAJ85A, SMBJ20A, KBP210G, UD2KB100, SDB207, ES1D-L, GS1M-L, SM4007PL, ES1J-L, MBR5020, SMBJ170A, US1K, 1N4148W, SK34A-L, MBRD6100CT, SD05C,





11. Wafer:

YJ Glass Passivation Process (GPP) for rectifier silicon occurs in the wafer form after the Wafer Diffusion Process. After the Diffusion Process, the wafer is masked with a photo resist film and the dice are pattern etched through the junction plane. This process is called mesa etching. The exposed p-n junction surface is then passivated in a two-layer process. First, an oxygen doped, Semi-Insulating Poly Crystalline Silicon (SIPOS) layer is deposited onto the silicon junction surface by Low Pressure Chemical Vapor Deposition (LPCVD) to stabilize the region. Then high temperature glass is deposited over the SIPOS layer and protects the junction from ambient contamination and mechanical damage.

Voltage : Up to 2000V

Trr: 15ns min.

Low Vf Type for standard rectifier available: 0.86V typical

