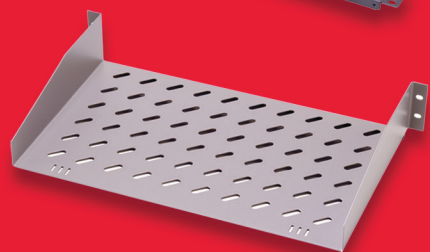
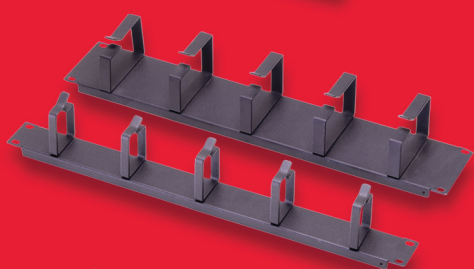


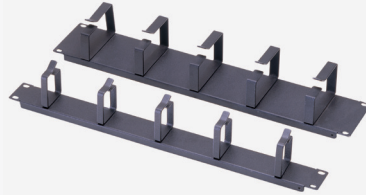
## ACCESSORIES free standing - wall mounting



Etap has a wide range of accessories:

Fixed shelves, heavy duty fixed shelves, sliding shelves, fans, cooling units, vertical cable managements, cable rings, organisers, trays, plinth and so on...

# ACCESSORIES wall mounting



## Cable management panels - Horizontal

For correctly managed installations, Estap offers a full range of cable management accessories to complement cabinet range and patch panel. The range is suitable for all 19" applications. Sheet steel, easy to install and mount. Rings: 5ea. cable hook				PROline			EUROline		ECOline		SOHoline		SOHO Slimline
				W=600 mm D=450 mm	W=600 mm D=560 mm	W=600 mm D=450+160 mm	W=600 mm D=450 mm	W=600 mm D=600 mm	W=600 mm D=450 mm	W=600 mm D=600 mm	W=292 mm D=300 mm 10"	W=520 mm D=300 mm 19"	W=520 mm D=400 mm 19"
Part Number	Product Definition	WxDxH (mm)	COMPATIBILITY										
E44 ORG1U	1U 19" cable management panels with 5 metal rings	483x80x44	X	X	X	X	X	X	X	X	X	X	X
E44 ORG1U PLST	1U 19" cable management panels with 4 plastic rings	483x80x44	X	X	X	X	X	X	X	X	X	X	X
E44 ORG1U N	1U 19" cable management panel, channel type and with removable cover	483x80x44	X	X	X	X	X	X	X	X	X	X	X
E44 ORG2F	1U 19" cable management panels with front patch cord access holes	483x124x44	X	X	X	X	X	X	X	X	X	X	X
E44 ORG2U	2U 19" cable management panels with 5 rings	483x80x88	X	X	X	X	X	X	X	X	X	X	X
E44 ORG1F	1/2U 19" cable management panels with front patch cord access holes	483x100x22	X	X	X	X	X	X	X	X	X	X	X
E44 ORG2F-BN	1U 19" cable management panels with front patch cord access holes, basic blank panel shaped	483x10x44	X	X	X	X	X	X	X	X	X	X	X

## 10" Accessories

10" applications Sheet steel Colour: RAL 7035 light grey or RAL 9005 black				PROline			EUROline		ECOline		SOHoline		SOHO Slimline
				W=600 mm D=450 mm	W=600 mm D=560 mm	W=600 mm D=450+160 mm	W=600 mm D=450 mm	W=600 mm D=600 mm	W=600 mm D=450 mm	W=600 mm D=600 mm	W=292 mm D=300 mm 10"	W=520 mm D=300 mm 19"	W=520 mm D=400 mm 19"
Part Number	Product Definition	WxDxH (mm)	COMPATIBILITY										
SOHSR10	1U 10" Shelf	254x152x44									X		
SOHORG10	1/2U 10" Cable management panel with patchcord access hole.	254x12x22									X		
SOHORG10 KNC	1U 10" cable management panel with 3ring	254x80x44									X		
SOHPP8P	1U patch panel unloaded RJ45 compatible	254x12x44									X		
SOHTGP3P	1U 10" 3way power strip c/w cable and on/off switch	254x100x44									X		

## WALL MOUNTING



### Fixed and Sliding Shelves

<p>4 fixing points fit at the sides of rear and front 19" mounting angles. Estap wall mounting cabinets are delivered with 2 pcs. of 19" mounting angles in standard delivery. Suitable with Estap 19" profiles Vented, material sheet steel Load carrying capacity: 50 kg for fixed shelves / 25 kg for sliding shelves Colour: RAL 7035 light grey or RAL 9005 black</p>	PROline			EUROline		ECOline		SOHOline		SOHO Slimline	
	W=600 mm D=450 mm	W=600 mm D=560 mm	W=600 mm D=450+160 mm	W=600 mm D=450 mm	W=600 mm D=600 mm	W=600 mm D=450 mm	W=600 mm D=600 mm	W=292 mm D=300 mm 10"	W=520 mm D=300 mm 19"	W=520 mm D=400 mm 19"	W=475 mm D=500 mm H=140 mm 19"

Part Number	Product Definition	WxDxH (mm)	COMPATIBILITY													
M44SBR60	Fixed shelf, vented, enclosure depth=600 mm( If cabinet is equipped with 4 pcs. 19" rails/ If needed please see 19" profiles angles)	465x345x30		X				X		X						
M44HRK60	Sliding Shelf vented enclosure depth=600 mm( If cabinet is equipped with 4 pcs. 19" rails/ If needed please see 19" profiles angles)	465x345x30		X				X		X						

### 1U-2U 19" Rack Mount Shelves

<p>19", rack mounted Vented, material sheet steel Load carrying capacity: 50 kg Colour: RAL 7035 light grey or RAL 9005 black</p>	PROline			EUROline		ECOline		SOHOline		SOHO Slimline	
	W=600 mm D=450 mm	W=600 mm D=560 mm	W=600 mm D=450+160 mm	W=600 mm D=450 mm	W=600 mm D=600 mm	W=600 mm D=450 mm	W=600 mm D=600 mm	W=292 mm D=300 mm 10"	W=520 mm D=300 mm 19"	W=520 mm D=400 mm 19"	W=475 mm D=500 mm H=140 mm 19"

Part Number	Product Definition	WxDxH (mm)	COMPATIBILITY													
E44RAK20	19" 1U Rack Mount Shelf depth=200 mm	483x200x44	X	X	X	X	X	X	X	X	X	X				
E44RAK25	19" 1U Rack Mount Shelf depth=250 mm	483x250x44	X	X	X	X	X	X	X	X	X	X				
E44RAK30	19" 1U Rack Mount Shelf depth=300 mm	483x300x44	X	X	X	X	X	X	X	X	X	X				
E44RAK35	19" 2U Rack Mount Shelf depth=350 mm	483x370x88	X	X	X	X	X	X	X	X	X	X				
E44RAK40	19" 1U Rack Mount Shelf depth=400 mm	483x400x44		X				X		X						

# ACCESSORIES wall mounting



## Castor - Levelling Feet

Rotational type, heavy duty 2 ea. front are lockable Load capacity per castor: 250 kg Levelling feet: Possible to adjust height of the feet from the floor Load capacity per levelling feet: 250 kg	PROline			EUROline		ECOline		SOHOline		SOHO Slimline	
	W=600 mm D=450 mm	W=600 mm D=560 mm	W=600 mm D=450+160 mm	W=600 mm D=450 mm	W=600 mm D=600 mm	W=600 mm D=450 mm	W=600 mm D=600 mm	W=292 mm D=300 mm 10"	W=520 mm D=300 mm 19"	W=520 mm D=400 mm 19"	W=475 mm D=500 mm H=140 mm 19"

Part Number	Product Definition	WxDxH (mm)	COMPATIBILITY											
M22 DRTGR	Castor group, 2ea. Front: lockable, rotatable, 2ea.rear: rotatable Castor Group, 1 point fixing, 1 set=4ea Load capacity=25kg./castor	50x80x80	X	X	X	X	X	X	X	X	X	X	X	X
M11 PNY02	Levelling feet, PVC (1set=4ea), adjustable	45xh (minh=30 maxh=45)	X	X	X	X	X	X	X	X	X	X	X	X
M11 PNY35	Heavy duty type levelling feet, metal, inner filled with rubber (1set=4ea), height=35 mm, adjustable	45xh (minh=35 maxh=50)	X	X	X	X	X	X	X	X	X	X	X	X
M11 PNY99	Heavy duty type levelling feet, metal, inner filled with rubber (1set=4ea), height=90 mm, adjustable	45xh (minh=35 maxh=90)	X	X	X	X	X	X	X	X	X	X	X	X

## Fixings

Steel M6x15 mm screw M6 caged nut M6 washer	PROline			EUROline		ECOline		SOHOline		SOHO Slimline	
	W=600 mm D=450 mm	W=600 mm D=560 mm	W=600 mm D=450+160 mm	W=600 mm D=450 mm	W=600 mm D=600 mm	W=600 mm D=450 mm	W=600 mm D=600 mm	W=292 mm D=300 mm 10"	W=520 mm D=300 mm 19"	W=520 mm D=400 mm 19"	W=475 mm D=500 mm H=140 mm 19"

Part Number	Product Definition	WxDxH (mm)	COMPATIBILITY											
KFS 6X15	M6 caged nut, screw, washer (1set=20ea)	9.5x9.5	X	X	X	X	X	X	X	X	X	X	X	X
KFS 6X16 50	M6 caged nut, screw, washer (1set=50ea)	9.5x9.6	X	X	X	X	X	X	X	X	X	X	X	X

## WALL MOUNTING



### Lighting Fixture

19", 1U ON/OFF switch controlled or automatic door switch controlled 220 Vac	PROline			EUROline		ECOline		SOHOline		SOHO Slimline	
	W=600 mm D=450 mm	W=600 mm D=560 mm	W=600 mm D=450+160 mm	W=600 mm D=450 mm	W=600 mm D=600 mm	W=600 mm D=450 mm	W=600 mm D=600 mm	W=292 mm D=300 mm 10"	W=520 mm D=300 mm 19"	W=520 mm D=400 mm 19"	W=475 mm D=500 mm H=140 mm 19"

Part Number	Product Definition	WxDxH (mm)	COMPATIBILITY										
MAYDNL01	Lighting fixture 1U 19", with on/off switch - manually by hand	483x35x44	X	X	X	X	X	X	X	X	X	X	X

### Grounding Kit

6ea. Copper cable - earthing leads Potential equalization busbar for earth continuity system	PROline			EUROline		ECOline		SOHOline		SOHO Slimline	
	W=600 mm D=450 mm	W=600 mm D=560 mm	W=600 mm D=450+160 mm	W=600 mm D=450 mm	W=600 mm D=600 mm	W=600 mm D=450 mm	W=600 mm D=600 mm	W=292 mm D=300 mm 10"	W=520 mm D=300 mm 19"	W=520 mm D=400 mm 19"	W=475 mm D=500 mm H=140 mm 19"

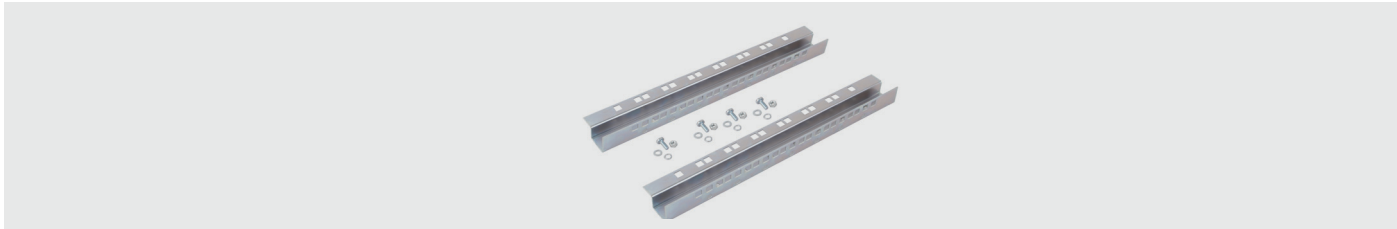
Part Number	Product Definition	WxDxH (mm)	COMPATIBILITY										
M44 PEB01	Grounding kit 6ea.earthing leads+copper busbar	*	X	X	X	X	X	X	X	X	X	X	X

### Keyboard Drawer 1U 19" - lockable

1U, lockable drawer for keyboards up to 410 mm width 19" rack mount, adjustable depth. Estap wall mounting cabinets are delivered with 2 pcs. of 19" mounting angles in standard delivery. Material: sheet steel Load carrying capacity: 25 kg Colour: RAL 7035 light grey or RAL 9005 black	PROline			EUROline		ECOline		SOHOline		SOHO Slimline	
	W=600 mm D=450 mm	W=600 mm D=560 mm	W=600 mm D=450+160 mm	W=600 mm D=450 mm	W=600 mm D=600 mm	W=600 mm D=450 mm	W=600 mm D=600 mm	W=292 mm D=300 mm 10"	W=520 mm D=300 mm 19"	W=520 mm D=400 mm 19"	W=475 mm D=500 mm H=140 mm 19"

Part Number	Product Definition	WxDxH (mm)	COMPATIBILITY										
E44DRW 1U	1U 19" Keyboard drawer( If cabinet is equipped with 4 pcs. 19" rails/ If needed please see 19" profiles angles)	483x400x44		X			X		X				

# ACCESSORIES wall mounting



## 19" Mounting Angles - Profiles

<p>All Estap wall mounting cabinets are delivered with 2 pcs. of 19" mounting angles in standard delivery. If any usage and need extra profiles then you can order as followed. Cover: Galvanised steel</p>	PROline			EUROline		ECOline		SOHoline			SOHO Slimline
	W=600 mm D=450 mm	W=600 mm D=560 mm	W=600 mm D=450+160 mm	W=600 mm D=450 mm	W=600 mm D=600 mm	W=600 mm D=450 mm	W=600 mm D=600 mm	W=292 mm D=300 mm 10"	W=520 mm D=300 mm 19"	W=520 mm D=400 mm 19"	W=475 mm D=500 mm H=140 mm 19"

Part Number	Product Definition	WxDxH (mm)	COMPATIBILITY												
			PROline	EUROline	ECOline	SOHoline	SOHO Slimline	PROline	EUROline	ECOline	SOHoline	SOHO Slimline			
CMD 7U PROLINE	7U 19" mounting angles 1set=2ea. (left+right)	31x54x396	X	X	X			X	X						
CMD 9U PROLINE	9U 19" mounting angles 1set=2ea. (left+right)	31x54x485	X	X	X			X	X						
CMD 12U PROLINE	12U 19" mounting angles 1set=2ea. (left+right)	31x54x618	X	X	X			X	X						
CMD 16U PROLINE	16U 19" mounting angles 1set=2ea. (left+right)	31x54x796	X	X	X			X	X						
CMD 20U PROLINE	20U 19" mounting angles 1set=2ea. (left+right)	31x54x973	X	X	X			X	X						
CMD 7U EU	7U 19" mounting angles 1set=2ea. (left+right)	31x54x396				X	X								
CMD 9U EU	9U 19" mounting angles 1set=2ea. (left+right)	31x54x485				X	X								
CMD 12U EU	12U 19" mounting angles 1set=2ea. (left+right)	31x54x618				X	X								
CMD 16U EU	16U 19" mounting angles 1set=2ea. (left+right)	31x54x796				X	X								

## WALL MOUNTING



### Basic PDU

Estap has a wide range of PDU offer. Please contact with sales departments for the other PDU needs.	PROline		EUROline		ECOline		SOHOline		SOHO Slimline	
	W=600 mm D=450 mm	W=600 mm D=560 mm	W=600 mm D=450+160 mm	W=600 mm D=450 mm	W=600 mm D=600 mm	W=600 mm D=450 mm	W=600 mm D=600 mm	W=292 mm D=300 mm 10"	W=520 mm D=300 mm 19"	W=520 mm D=400 mm 19"

Part Number	Product Definition	WxDxH (mm)	COMPATIBILITY										
M443ALE-ES	3xDIN49440 Socket Schuko PDU, 19" 1U, aluminium profile frame, 1x16A MCB, 4000 Watt, 250V AC, 3x1.5 mm <sup>2</sup> , 3m cord with DIN 49441 plug, CE mark	482.6(19")x44.4x44.4 (mm)	X	X	X	X	X	X	X	X	X	X	X
M446ALE-ES	6xDIN49440 Socket Schuko PDU, 19" 1U, aluminium profile frame, 1x16A MCB, 4000 Watt, 250V AC, 3x1.5 mm <sup>2</sup> , 3m cord with DIN 49441 plug, CE mark	482.6(19")x44.4x44.4 (mm)	X	X	X	X	X	X	X	X	X	X	X
M446STD-ES	6xDIN49440 Socket Schuko PDU, 19" 1U, aluminium profile frame, 16A On/Off Lighted Switch, 4000 Watt, 250V AC, 3x1.5 mm <sup>2</sup> , 3m cord with DIN 49441 plug, CE mark	482.6(19")x44.4x44.4 (mm)	X	X	X	X	X	X	X	X	X	X	X
M449ALC-ES	9xDIN49440 Socket Schuko PDU, 19" 2U, aluminium profile frame, 1x16A MCB, 4000 Watt, 250V AC, 3x1.5 mm <sup>2</sup> , 3m cord with DIN 49441 plug, CE mark	482.6(19")x44.4x88.8 (mm)	X	X	X	X	X	X	X	X	X	X	X
M446AL UK-ES	6xBS1363 UK Socket PDU, 19" 1U, aluminium profile frame, 16A On/Off Lighted Switch, 4000 Watt, 250V AC, 3x1.5 mm <sup>2</sup> , 3m cord with 13A BS1363 plug, CE mark	482.6(19")x44.4x44.4 (mm)	X	X	X	X	X	X	X	X	X	X	X
M446ALD-ES	6xDIN49440 Socket Schuko PDU, -double circuit (3+3) 19" with aluminium profile frame, 2x16A MCB, 4000 Watt, 250V AC, 3x1.5 mm <sup>2</sup> , 2,5m cord with DIN 49441 plug	482.6(19")x42x60 (mm)	X	X	X	X	X	X	X	X	X	X	X
M44 6AL IEC-ES	6xIEC 320 C13 Socket PDU, 19" aluminium profile frame, 1x16A MCB, 4000 Watt, 250V AC, IEC 320 C14 plug	482.6(19")x42x60 (mm)	X	X	X	X	X	X	X	X	X	X	X

# ACCESSORIES wall mounting



## Blank panels

Blank/Blind panels are used to close empty positions in the cabinet Sheet steel 19" Colour: RAL 7035 light grey or RAL 9005 black	PROline			EUROline		ECOline		SOHoline		SOHO Slimline
	W=600 mm D=450 mm	W=600 mm D=560 mm	W=600 mm D=450+160 mm	W=600 mm D=450 mm	W=600 mm D=600 mm	W=600 mm D=450 mm	W=600 mm D=600 mm	W=292 mm D=300 mm 10»	W=520 mm D=300 mm 19»	W=520 mm D=400 mm 19»

Part Number	Product Definition	WxDxH (mm)	COMPATIBILITY										
E44 BPN01	1U 19" Blank panel	483x12x44	X	X	X	X	X	X	X	X	X	X	X
E44 BPN02	2U 19" Blank panel	483x12x88	X	X	X	X	X	X	X	X	X	X	X
E44 BPN03	3U 19" Blank panel	483x12x133	X	X	X	X	X	X	X	X	X	X	X
E44 BPN04	4U 19" Blank panel	483x12x177	X	X	X	X	X	X	X	X	X	X	X
E44 BPN05	5U 19" Blank panel	483x12x222	X	X	X	X	X	X	X	X	X	X	X
E44 BPN06	6U 19" Blank panel	483x12x266	X	X	X	X	X	X	X	X	X	X	X
E44 PPN01	1U 19" Blank panel vented	483x12x44	X	X	X	X	X	X	X	X	X	X	X
E44 PPN02	2U 19" Blank panel vented	483x12x88	X	X	X	X	X	X	X	X	X	X	X

## Air Removals / Cooling Units - Control: ON/OFF switch

ON/OFF switch controlled Complete with inner wiring Noise:47 db ( lower noise is optional) A fan provides 2,33 / min. Air removal, CFM:80 Colour: RAL 7035light grey or RAL 9005 black	PROline			EUROline		ECOline		SOHoline		SOHO Slimline
	W=600 mm D=450 mm	W=600 mm D=560 mm	W=600 mm D=450+160 mm	W=600 mm D=450 mm	W=600 mm D=600 mm	W=600 mm D=450 mm	W=600 mm D=600 mm	W=292 mm D=300 mm 10»	W=520 mm D=300 mm 19»	W=520 mm D=400 mm 19»

Part Number	Product Definition	WxDxH (mm)	COMPATIBILITY										
TH630 C1	Thermostat Unit		X	X	X	X	X	X	X	X	X	X	
M11 1F1F	Fan 220vac, with 2m Cable	120x120x37	X	X	X	X	X	X	X		X	X	
M11 HV1F W	Cooling unit with 1 fan + on/off switch controlled, suitable for wall mounting cabinets	350x190x44	X	X	X	X	X	X	X		X	X	
M11 HV2F W	Cooling unit with 2 fan + on/off switch controlled, suitable for wall mounting cabinets	350x190x44	X	X	X	X	X	X	X		X	X	
E44 HV2F	19" 1U rack mount cooling unit with 2 fans + on/off switch controlled	483x150x44	X	X	X	X	X	X	X		X	X	
E44 HV4F	19" 1U rack mount cooling unit with 4 fans + on/off switch controlled	483x300x44	X	X	X	X	X	X	X				



## WALL MOUNTING



### Air Removals / Cooling Units - Thermostat controlled

Thermostat-air temperature controller Range: 0-35 degree, below set point fans does not activated  
Above set point fan units start ventilation.  
Complete with inner wiring.  
Noise: 47 db ( lower noise is optional)  
A fan provides 2,33 / min. Air removal, CFM: 80  
Colour: RAL 7035 light grey or RAL 9005 black

			PROline			EUROline		ECOline		SOHoline		SOHO Slimline
W=600 mm D=450 mm	W=600 mm D=560 mm	W=600 mm D=450+160 mm	W=600 mm D=450 mm	W=600 mm D=600 mm	W=600 mm D=450 mm	W=600 mm D=600 mm	W=600 mm D=450 mm	W=600 mm D=600 mm	W=292 mm D=300 mm 10»	W=520 mm D=300 mm 19»	W=520 mm D=400 mm 19»	W=475 mm D=500 mm H=140 mm 19"

Part Number	Product Definition	WxDxH (mm)	COMPATIBILITY										
M11 HV1F W T	Cooling unit with 1 fan + thermostat controlled, suitable for wall mounting cabinets	350x190x44	X	X	X	X	X	X	X	X	X	X	
M11 HV2F W T	Cooling unit with 2 fan + thermostat controlled, suitable for wall mounting cabinets	350x190x44	X	X	X	X	X	X	X	X	X	X	
E44 HV2F T	19" 1U rack mount cooling unit with 2 fans + thermostat controlled	483x150x44	X	X	X	X	X	X	X	X	X	X	
E44 HV4F T	19" 1U rack mount cooling unit with 4 fans + thermostat controlled	483x300x44	X	X	X	X	X	X	X	X	X	X	

### Air Removals / Cooling Units - Digital Thermostat controlled

Digital thermostat control unit: 1U, 19", possible to mount any location in the cabinet as rack mount  
Range 0-35 degree, below set point, fans does not activated. Above set point fan unit start ventilation.  
Complete with inner wiring.  
Noise: 47 db ( lower noise is optional)  
A fan provides 2,33 / min. Air removal, CFM:80  
Colour: RAL 7035 light grey or RAL 9005 black

			PROline			EUROline		ECOline		SOHoline		SOHO Slimline
W=600 mm D=450 mm	W=600 mm D=560 mm	W=600 mm D=450+160 mm	W=600 mm D=450 mm	W=600 mm D=600 mm	W=600 mm D=450 mm	W=600 mm D=600 mm	W=600 mm D=450 mm	W=600 mm D=600 mm	W=292 mm D=300 mm 10"	W=520 mm D=300 mm 19"	W=520 mm D=400 mm 19"	W=475 mm D=500 mm H=140 mm 19"

Part Number	Product Definition	WxDxH (mm)	COMPATIBILITY										
M11 HV1F W DT	Cooling unit with 1 fan + DIGITAL thermostat controlled, suitable for wall mounting cabinets	350x190x44 +1U 19"	X	X	X	X	X	X	X	X	X	X	
M11 HV2F W DT	Cooling unit with 2 fan + DIGITAL thermostat controlled, suitable for wall mounting cabinets	350x190x44 +1U 19"	X	X	X	X	X	X	X	X	X	X	
E44 HV2F DT	19" 1U rack mount cooling unit with 2 fans + DIGITAL thermostat controlled	483x150x44 +1U 19"	X	X	X	X	X	X	X	X	X	X	
E44 HV4F DT	19" 1U rack mount cooling unit with 4 fans + DIGITAL thermostat controlled	483x300x44 +1U 19"	X	X	X	X	X	X	X	X	X	X	

# ACCESSORIES free standing



Vertical Cable Management Panels with Cover																		
<p>It is designed to manage large patch cable bundles in front of the cabinet. It is installed through the cabinet height and each U dimension. There are holes to pass horizontal patch cables on vertical axis. Colour: RAL 7035 light grey or RAL 9005 black</p>	ServerMAX			Universal Line						EUROline								
	W=600 mm D=1000 mm	W=800 mm D=1000 mm	W=600 mm D=600 mm	W=600 mm D=800 mm	W=600 mm D=1000 mm	W=800 mm D=600 mm	W=800 mm D=800 mm	W=800 mm D=1000 mm	W=600 mm D=600 mm	W=600 mm D=800 mm	W=600 mm D=1000 mm	W=800 mm D=800 mm	W=800 mm D=1000 mm					
	COMPATIBILITY																	
Part Number	Product Definition	WxDxH (mm)																
M44 ORG32	32U Vertical cable management panel left/right= 1 set	94x94x1450							X	X	X							
M44 ORG36	36U Vertical cable management panel left/right= 1 set	94x94x1620							X	X	X							
M44 ORG39	39U Vertical cable management panel left/right= 1 set	94x94x1760							X	X	X							
M44 ORG42	42U Vertical cable management panel left/right= 1 set	94x94x1893							X	X	X							
M44 ORG44	44U Vertical cable management panel left/right= 1 set	94x94x1982							X	X	X							
M44 ORG47	47U Vertical cable management panel left/right= 1 set	94x94x2116							X	X	X							
M44 ORG42 SRV	42U Vertical cable management panel left/right= 1 set	94x94x1893		X														
M44 ORG47 SRV	47U Vertical cable management panel left/right= 1 set	94x94x2116		X														
M44ORG32MFX	32U Vertical cable management panel left/right= 1 set	95X90X1574															X	X
M44ORG36MFX	36U Vertical cable management panel left/right= 1 set	95X95X1755															X	X
M44ORG42MFX	42U Vertical cable management panel left/right= 1 set	95X95X1890															X	X
M44 ORG42 ECO	42U Vertical cable management panel left/right= 1 set	94x94x1893																

# FREE STANDING

ECOline				RELYrack		
W=600 mm D=600 mm	W=600 mm D=800 mm	W=600 mm D=1000 mm	W=800 mm D=800 mm	Single frame D=600 mm	Double frame D=800 mm	Double frame D=1000 mm
COMPATIBILITY						
			X			



# ACCESSORIES free standing



## Horizontal Cable Management Panels

For correctly managed installations, Estap offers a full range of cable management accessories to complement cabinet range and patch panel. The range is suitable for all 19" applications. Sheet steel, easy to install and mount. Rings: ea. cable hook Colour: RAL 7035 light grey or RAL 9005 black			<b>ServerMAX</b>		<b>Universal Line</b>						<b>EUROline</b>				
			W=600 mm D=1000 mm	W=800 mm D=1000 mm	W=600 mm D=600 mm	W=600 mm D=800 mm	W=600 mm D=1000 mm	W=800 mm D=600 mm	W=800 mm D=800 mm	W=800 mm D=1000 mm	W=600 mm D=600 mm	W=600 mm D=800 mm	W=600 mm D=1000 mm	W=800 mm D=800 mm	W=800 mm D=1000 mm
Part Number	Product Definition	WxDxH (mm)	COMPATIBILITY												
E44 ORG1U	1U 19" cable management panels with 5 metal rings	483x80x44	X	X	X	X	X	X	X	X	X	X	X	X	X
E44 ORG2U	2U 19" cable management panels with 5 rings	483x80x88	X	X	X	X	X	X	X	X	X	X	X	X	X
E44 ORG1U PLST	1U 19" cable management panels with 4 plastic rings	483x80x44	X	X	X	X	X	X	X	X	X	X	X	X	X
E44 ORG1U N	1U 19" cable management panel, channel type and with removable cover	483x80x44	X	X	X	X	X	X	X	X	X	X	X	X	X
E44 ORG1F	1/2U 19" cable management panels with front patch cord access holes	483x100x22	X	X	X	X	X	X	X	X	X	X	X	X	X
E44 ORG2F	1U 19" cable management panels with front patch cord access holes, L shaped, rear tray for cable support	483x124x44	X	X	X	X	X	X	X	X	X	X	X	X	X
E44 ORG2F-BN	1U 19" cable management panels with front patch cord access holes, basic blank panel shaped	483x10x44	X	X	X	X	X	X	X	X	X	X	X	X	X

## Cable Management Rings

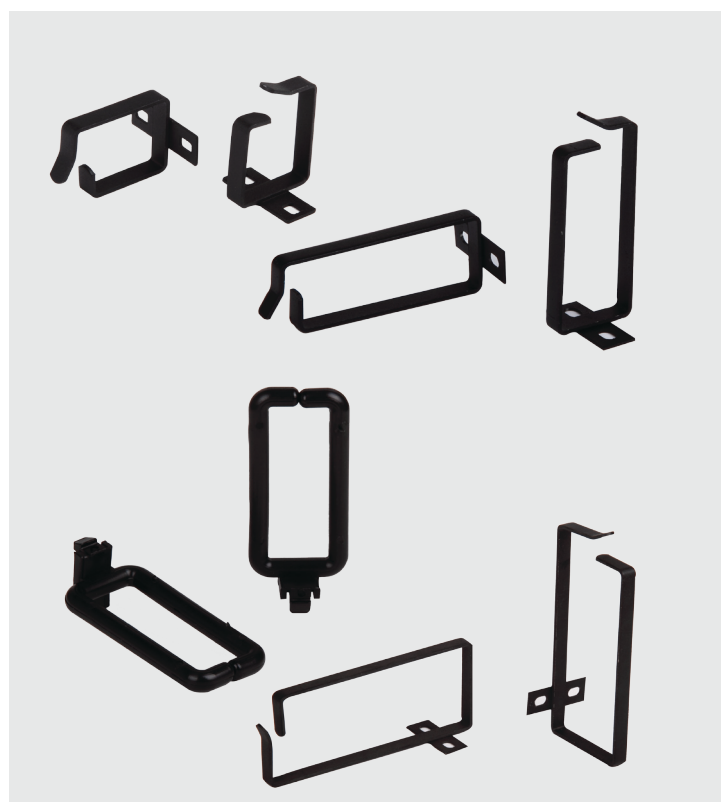
For correctly managed installations, Estap offers a full range of cable management accessories to complement cabinet range and patch panel. The range is suitable for all 19" applications. Colour: RAL 7035 light grey or RAL 9005 black			<b>ServerMAX</b>		<b>Universal Line</b>						<b>EUROline</b>				
			W=600 mm D=1000 mm	W=800 mm D=1000 mm	W=600 mm D=600 mm	W=600 mm D=800 mm	W=600 mm D=1000 mm	W=800 mm D=600 mm	W=800 mm D=800 mm	W=800 mm D=1000 mm	W=600 mm D=600 mm	W=600 mm D=800 mm	W=600 mm D=1000 mm	W=800 mm D=800 mm	W=800 mm D=1000 mm
Part Number	Product Definition	WxDxH (mm)	COMPATIBILITY												
K44 RING 01	Ring for cable management Material: Sheet Steel 44x30 mm 1set=5 ea.	44X30	X	X	X	X	X	X	X	X	X	X	X	X	X
K44 RING 02 1U	Ring for cable management Material: Sheet Steel 44x60 mm 1set=5 ea.	44X60	X	X	X	X	X	X	X	X	X	X	X	X	X
K44 RING 02 2U	Ring for cable management Material: Sheet Steel 87x60 mm 1set=5 ea.	87X60	X	X	X	X	X	X	X	X	X	X	X	X	X
K44 RING 03	Ring for cable management Material: Sheet Steel 44x110 mm 1set=5 ea.	44X110	X	X	X	X	X	X	X	X	X	X	X	X	X
K44 RING 04	Ring for cable management Material: Sheet Steel 70x160 mm 1set=5 ea.	70X160	X	X	X	X	X	X	X	X	X	X	X	X	X
K44 RING 05	Ring for cable management Material: PVC 45x100 mm Plastic 1set=5 ea.	45X110	X	X	X	X	X	X	X	X	X	X	X	X	X
K44 RING 06	Ring for cable management Material: PVC 60x100 mm Plastic 1set=5 ea.	60x100	X	X	X	X	X	X	X	X	X	X	X	X	X

FREE STANDING

ECOline				RELAYrack		
W=600 mm D=600 mm	W=600 mm D=800 mm	W=600 mm D=1000 mm	W=800 mm D=800 mm	Single frame D=600 mm	Double frame D=800 mm	Double frame D=1000 mm
<b>COMPATIBILITY</b>						
X	X	X	X	X	X	X
X	X	X	X	X	X	X
X	X	X	X	X	X	X
X	X	X	X	X	X	X
X	X	X	X	X	X	X
X	X	X	X	X	X	X
X	X	X	X	X	X	X



ECOline				RELAYrack		
W=600 mm D=600 mm	W=600 mm D=800 mm	W=600 mm D=1000 mm	W=800 mm D=800 mm	Single frame D=600 mm	Double frame D=800 mm	Double frame D=1000 mm
<b>COMPATIBILITY</b>						
X	X	X	X	X	X	X
X	X	X	X	X	X	X
X	X	X	X	X	X	X
X	X	X	X	X	X	X
X	X	X	X	X	X	X
X	X	X	X	X	X	X
X	X	X	X	X	X	X



# ACCESSORIES free standing

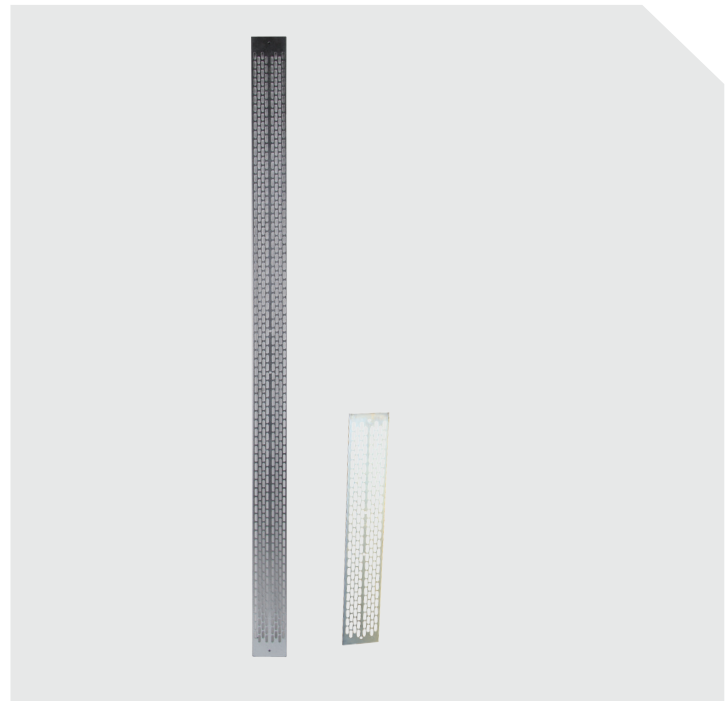


Cable Trays - Vertical														
Along with cabinet height Sheet steel Vented, for cable fixing and carrying Cover: Galvanized			ServerMAX		Universal Line						EUROline			
			W=600 mm D=1000 mm	W=800 mm D=1000 mm	W=600 mm D=600 mm	W=600 mm D=800 mm	W=600 mm D=1000 mm	W=800 mm D=600 mm	W=800 mm D=800 mm	W=800 mm D=1000 mm	W=600 mm D=600 mm	W=600 mm D=800 mm	W=600 mm D=1000 mm	W=800 mm D=800 mm
Part Number	Product Definition	WxDxH (mm)	COMPATIBILITY											
E44 KNL16	16U Cable tray	10x103x662			X	X								
E44 KNL20	20U Cable tray	10x103x840			X	X								
E44 KNL22	22U Cable tray	10x103x929			X	X					X	X		
E44 KNL26	26U Cable tray	10x103x1107	X		X	X	X				X	X	X	
E44 KNL32	32U Cable tray	10x103x1373			X	X		X	X		X	X		X
E44 KNL36	36U Cable tray	10x103x1551	X		X	X	X	X	X		X	X	X	X
E44 KNL39	39U Cable tray	10x103x1684			X	X		X	X					
E44 KNL42	42U Cable tray	10x103x1813	X	X	X	X	X	X	X	X	X	X	X	X
E44 KNL44	44U Cable tray	10x103x1907			X	X		X	X					
E44 KNL47	47U Cable tray	10x103x2000	X	X	X	X	X	X	X	X				

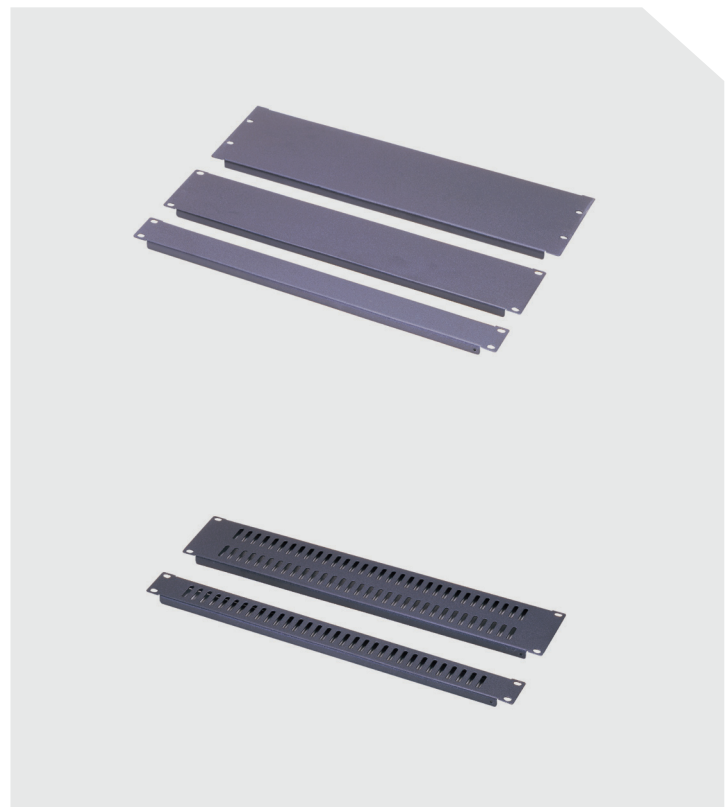
Blank Panels														
Blank/Blind panels are used to close empty positions in the cabinet Sheet steel 19" Colour: RAL 7035 light grey or RAL 9005 black			ServerMAX		Universal Line						EUROline			
			W=600 mm D=1000 mm	W=800 mm D=1000 mm	W=600 mm D=600 mm	W=600 mm D=800 mm	W=600 mm D=1000 mm	W=800 mm D=600 mm	W=800 mm D=800 mm	W=800 mm D=1000 mm	W=600 mm D=600 mm	W=600 mm D=800 mm	W=600 mm D=1000 mm	W=800 mm D=800 mm
Part Number	Product Definition	WxDxH (mm)	COMPATIBILITY											
E44 BPN01	1U 19" Blank panel	483x12x44	X	X	X	X	X	X	X	X	X	X	X	X
E44 BPN02	2U 19" Blank panel	483x12x88	X	X	X	X	X	X	X	X	X	X	X	X
E44 BPN03	3U 19" Blank panel	483x12x133	X	X	X	X	X	X	X	X	X	X	X	X
E44 BPN04	4U 19" Blank panel	483x12x177	X	X	X	X	X	X	X	X	X	X	X	X
E44 BPN05	5U 19" Blank panel	483x12x222	X	X	X	X	X	X	X	X	X	X	X	X
E44 BPN06	6U 19" Blank panel	483x12x266	X	X	X	X	X	X	X	X	X	X	X	X
E44 PPN01	1U 19" Blank panel vented	483x12x44	X	X	X	X	X	X	X	X	X	X	X	X
E44 PPN02	2U 19" Blank panel vented	483x12x88	X	X	X	X	X	X	X	X	X	X	X	X

## FREE STANDING

ECOnline				RELAYrack		
W=600 mm D=600 mm	W=600 mm D=800 mm	W=600 mm D=1000 mm	W=800 mm D=800 mm	Single frame D=600 mm	Double frame D=800 mm	Double frame D=1000 mm
<b>COMPATIBILITY</b>						
X	X					
X	X					
		X				
X	X					
		X				
X	X	X	X			



ECOnline				RELAYrack		
W=600 mm D=600 mm	W=600 mm D=800 mm	W=600 mm D=1000 mm	W=800 mm D=800 mm	Single frame D=600 mm	Double frame D=800 mm	Double frame D=1000 mm
<b>COMPATIBILITY</b>						
X	X	X	X	X	X	X
X	X	X	X	X	X	X
X	X	X	X	X	X	X
X	X	X	X	X	X	X
X	X	X	X	X	X	X
X	X	X	X	X	X	X
X	X	X	X	X	X	X
X	X	X	X	X	X	X
X	X	X	X	X	X	X



# ACCESSORIES free standing



## Air Removals / Cooling Units - Control: ON/OFF switch

ON/OFF switch controlled Complete with inner wiring Noise:47 db ( lower noise is optional) A fan provides 2,33 / min.Air removal, CFM:80 Colour: RAL 7035light grey or RAL 9005 black			ServerMAX		Universal Line						EUROline							
			W=600 mm D=1000 mm	W=800 mm D=1000 mm	W=600 mm D=600 mm	W=600 mm D=800 mm	W=600 mm D=1000 mm	W=800 mm D=600 mm	W=800 mm D=800 mm	W=800 mm D=1000 mm	W=600 mm D=600 mm	W=600 mm D=800 mm	W=600 mm D=1000 mm	W=800 mm D=800 mm	W=800 mm D=1000 mm			
Part Number	Product Definition	WxDxH (mm)	COMPATIBILITY															
TH630 C1	Thermostat Unit		X	X	X	X	X	X	X	X	X	X	X	X	X	X	X	X
M11 1F1F	Fan 220vac, with 2m Cable	120x120x37	X	X	X	X	X	X	X	X	X	X	X	X	X	X	X	X
M44 HV1F	Cooling unit with 1 fan + on/off switch controlled, suitable for Universal Line cabinets	440x400x65			X	X	X	X	X	X								
M44 HV2F	Cooling unit with 2 fan + on/off switch controlled, suitable for Universal Line cabinets	440x400x65			X	X	X	X	X	X								
M44 HV4F	Cooling unit with 4 fan + on/off switch controlled, suitable for Universal Line cabinets	440x400x65			X	X	X	X	X	X								
M55 HV4F S	Cooling unit with 4 fan + on/off switch controlled, suitable for ServerMAX cabinets	380x520x45	X	X														
M55 HV6F S	Cooling unit with 6 fan + on/off switch controlled, suitable for ServerMAX cabinets	380x520x45	X	X														
M35HV2F	Cooling unit with 2 fan + on/off switch controlled, suitable for Euroline and Ecoline cabinets	350x191x45										X	X	X	X	X		
M35HV4F	Cooling unit with 4 fan + on/off switch controlled, suitable for Euroline and Ecoline cabinets	340x412x45										X	X	X	X	X		
E44 HV2F	19" 1U rack mount cooling unit with 2 fans + on/off switch controlled	483x150x44	X	X	X	X	X	X	X	X	X	X	X	X	X	X	X	X
E44 HV4F	19" 1U rack mount cooling unit with 4 fans + on/off switch controlled	483x300x44	X	X	X	X	X	X	X	X	X	X	X	X	X	X	X	X



FREE STANDING

ECOline				RELAYrack		
W=600 mm D=600 mm	W=600 mm D=800 mm	W=600 mm D=1000 mm	W=800 mm D=800 mm	Single frame D=600 mm	Double frame D=800 mm	Double frame D=1000 mm
COMPATIBILITY						
X	X	X	X			
X	X	X	X			
X	X	X	X			
X	X	X	X			
X	X	X	X			
X	X	X	X			



# ACCESSORIES free standing



## Air Removals / Cooling Units - Thermostat controlled

Thermostat-air temperature controller Range: 0-35 degree, below set point fans does not activated  
Above set point fan units start ventilation. Complete with inner wiring.  
Noise:47 db ( lower noise is optional)  
A fan provides 2,33 / min.Air removal, CFM:80  
Colour: RAL 7035 light grey or RAL 9005 black

ServerMAX		Universal Line						EUROline					
W=600 mm D=1000 mm	W=800 mm D=1000 mm	W=600 mm D=600 mm	W=600 mm D=800 mm	W=600 mm D=1000 mm	W=800 mm D=600 mm	W=800 mm D=800 mm	W=800 mm D=1000 mm	W=600 mm D=600 mm	W=600 mm D=800 mm	W=600 mm D=1000 mm	W=800 mm D=600 mm	W=800 mm D=800 mm	W=800 mm D=1000 mm

Part Number	Product Definition	WxDxH (mm)	COMPATIBILITY																						
M44 HV1F T	Cooling unit with 1 fan + thermostat controlled, suitable for Universal Line cabinets	440x400x65						X	X	X	X	X	X												
M44 HV2F T	Cooling unit with 2 fan + thermostat controlled, suitable for Universal Line cabinets	440x400x65						X	X	X	X	X	X												
M44 HV4F T	Cooling unit with 4 fan + thermostat controlled, suitable for Universal Line cabinets	440x400x65						X	X	X	X	X	X												
M55 HV4F S T	Cooling unit with 4 fan + thermostat controlled, suitable for ServerMAX cabinets	380x520x45	X	X																					
M55HV6F S T	Cooling unit with 6 fan + thermostat controlled, suitable for ServerMAX cabinets	380x520x45	X	X																					
M35HV2F T	Cooling unit with 2 fan + thermostat controlled, suitable for Euroline and Ecoline cabinets	350x191x45																X	X	X	X	X			
M35HV4F T	Cooling unit with 4 fan + thermostat controlled, suitable for Euroline and Ecoline cabinets	340x412x45																X	X	X	X	X			
E44 HV2F T	19" 1U rack mount cooling unit with 2 fans + thermostat controlled	483x150x44	X	X	X	X	X	X	X	X	X	X	X	X	X	X	X	X	X	X	X	X	X	X	X
E44 HV4F T	19" 1U rack mount cooling unit with 4 fans + thermostat controlled	483x300x44	X	X	X	X	X	X	X	X	X	X	X	X	X	X	X	X	X	X	X	X	X	X	X

FREE STANDING

ECOline				RELAYrack		
W=600 mm D=600 mm	W=600 mm D=800 mm	W=600 mm D=1000 mm	W=800 mm D=800 mm	Single frame D=600 mm	Double frame D=800 mm	Double frame D=1000 mm
COMPATIBILITY						
X	X	X	X			
X	X	X	X			
X	X	X	X			
X	X	X	X			



# ACCESSORIES free standing



## Air Removals / Cooling Units - Digital Thermostat controlled

Digital thermostat control unit : 1U, 19", possible to mount any location in the cabinet as rack mount  
 Range 0-35 degree, below set point, fans does not activated. Above set point fan unit start ventilation.  
 Complete with inner wiring.  
 Noise:47 db ( lower noise is optional)  
 A fan provides 2,33 / min. Air removal, CFM:80  
 Colour: RAL 7035 light grey or RAL 9005 black

ServerMAX		Universal Line						EUROline					
W=600 mm D=1000 mm	W=800 mm D=1000 mm	W=600 mm D=600 mm	W=600 mm D=800 mm	W=600 mm D=1000 mm	W=800 mm D=600 mm	W=800 mm D=800 mm	W=800 mm D=1000 mm	W=600 mm D=600 mm	W=600 mm D=800 mm	W=600 mm D=1000 mm	W=800 mm D=800 mm	W=800 mm D=1000 mm	

Part Number	Product Definition	WxDxH (mm)	COMPATIBILITY														
			ServerMAX W=600 D=1000	ServerMAX W=800 D=1000	Universal W=600 D=600	Universal W=600 D=800	Universal W=600 D=1000	Universal W=800 D=600	Universal W=800 D=800	Universal W=800 D=1000	EURO W=600 D=600	EURO W=600 D=800	EURO W=600 D=1000	EURO W=800 D=800	EURO W=800 D=1000		
M35 HV4F W DT	Cooling unit with 4 fan + DIGITAL thermostat controlled, suitable for ecoline and euroline cabinets	340x410x44 + 1U 19"											X	X	X	X	X
M44 HV1F DT	Cooling unit with 1 fan + DIGITAL thermostat controlled, suitable for Universal Line cabinets	440x400x65 + 1U 19"			X	X	X	X	X	X							
M44 HV2F DT	Cooling unit with 2 fan + DIGITAL thermostat controlled, suitable for Universal Line cabinets	440x400x65 + 1U 19"			X	X	X	X	X	X							
M44 HV4F DT	Cooling unit with 4 fan + DIGITAL thermostat controlled, suitable for Universal Line cabinets	440x400x65 + 1U 19"			X	X	X	X	X	X							
M55 HV4F S DT	Cooling unit with 4 fan + DIGITAL thermostat controlled, suitable for ServerMAX cabinets	380x520x45 + 1U 19"	X	X													
M55 HV6F S DT	Cooling unit with 6 fan + DIGITAL thermostat controlled, suitable for ServerMAX cabinets	380x520x45 + 1U 19"	X	X													
E44 HV2F DT	19" 1U rack mount cooling unit with 2 fans + DIGITAL thermostat controlled	483x150x44 + 1U 19"	X	X	X	X	X	X	X	X	X	X	X	X	X	X	X
E44 HV4F DT	19" 1U rack mount cooling unit with 4 fans + DIGITAL thermostat controlled	483x300x44 + 1U 19"	X	X	X	X	X	X	X	X	X	X	X	X	X	X	X

FREE STANDING

ECOline				RELAYrack		
W=600 mm D=600 mm	W=600 mm D=800 mm	W=600 mm D=1000 mm	W=800 mm D=800 mm	Single frame D=600 mm	Double frame D=800 mm	Double frame D=1000 mm

COMPATIBILITY

X	X	X	X			
X	X	X	X			
X	X	X	X			



# ACCESSORIES free standing



## Fixed and Sliding Shelves

4 fixing points fit at the sides of rear and front 19" mounting angles Suitable with Estap 19" profiles Vented, material sheet steel Load carrying capacity: 50 kg for fixed shelves / 25 kg for sliding shelves Colour: RAL 7035 light grey or RAL 9005 black			<b>ServerMAX</b>		<b>Universal Line</b>						<b>EUROline</b>			
			W=600 mm D=1000 mm	W=800 mm D=1000 mm	W=600 mm D=600 mm	W=600 mm D=800 mm	W=600 mm D=1000 mm	W=800 mm D=600 mm	W=800 mm D=800 mm	W=800 mm D=1000 mm	W=600 mm D=600 mm	W=600 mm D=800 mm	W=600 mm D=1000 mm	W=800 mm D=800 mm
Part Number	Product Definition	WxDxH (mm)	COMPATIBILITY											
M44SBR60	Fixed shelf, vented, enclosure depth=600 mm	465x345x30			X				X			X		
M44SBR80	Fixed shelf, vented, enclosure depth=800 mm	465x525x30				X			X			X		X
M44SBR100	Fixed shelf, vented, enclosure depth=1000 mm	485x745x60	X	X			X			X			X	X
M44HRK60	Sliding Shelf vented enclosure depth=600 mm	465x345x30			X				X			X		
M44HRK80	Sliding Shelf vented enclosure depth=800 mm	465x525x30				X			X			X		X

## 1U-2U 19" Rack Mount Shelves

19", rack mounted Vented, material sheet steel Load carrying capacity: 50 kg Colour: RAL 7035 light grey or RAL 9005 black			<b>ServerMAX</b>		<b>Universal Line</b>						<b>EUROline</b>			
			W=600 mm D=1000 mm	W=800 mm D=1000 mm	W=600 mm D=600 mm	W=600 mm D=800 mm	W=600 mm D=1000 mm	W=800 mm D=600 mm	W=800 mm D=800 mm	W=800 mm D=1000 mm	W=600 mm D=600 mm	W=600 mm D=800 mm	W=600 mm D=1000 mm	W=800 mm D=800 mm
Part Number	Product Definition	WxDxH (mm)	COMPATIBILITY											
E44RAK20	19" 1U Rack Mount Shelf depth=200 mm	483x200x44	X	X	X	X	X	X	X	X	X	X	X	X
E44RAK25	19" 1U Rack Mount Shelf depth=250 mm	483x250x44	X	X	X	X	X	X	X	X	X	X	X	X
E44RAK30	19" 1U Rack Mount Shelf depth=300 mm	483x300x44	X	X	X	X	X	X	X	X	X	X	X	X
E44RAK35	19" 2U Rack Mount Shelf depth=350 mm	483x370x88	X	X	X	X	X	X	X	X	X	X	X	X
E44RAK40	19" 1U Rack Mount Shelf depth=400 mm	483x400x44	X	X	X	X	X	X	X	X	X	X	X	X
E44RAK55	19" 2U Rack Mount Shelf depth=550 mm	483x550x88	X	X		X	X		X	X		X	X	X

## FREE STANDING

ECOline				RELAYrack		
W=600 mm D=600 mm	W=600 mm D=800 mm	W=600 mm D=1000 mm	W=800 mm D=800 mm	Single frame D=600 mm	Double frame D=800 mm	Double frame D=1000 mm
<b>COMPATIBILITY</b>						
X						
	X		X		X	
		X				X
X						
	X		X		X	



ECOline				RELAYrack		
W=600 mm D=600 mm	W=600 mm D=800 mm	W=600 mm D=1000 mm	W=800 mm D=800 mm	Single frame D=600 mm	Double frame D=800 mm	Double frame D=1000 mm
<b>COMPATIBILITY</b>						
X	X	X	X	X	X	X
X	X	X	X	X	X	X
X	X	X	X	X	X	X
X	X	X	X	X	X	X
X	X	X	X	X	X	X
X	X	X	X	X	X	X



# ACCESSORIES free standing



## 4 point 19" Rack Mount Shelves - 2pt. Front - 2pt. Rear

4 point , 19" rack mounting, 2 point from the front 19" mounting angles 2 pt. from the rear 19" mounting angles, from front 1U or 2U, from rear 1U Vented, material sheet steel Adjustable depth Load carrying capacity: 50 kg Colour: RAL 7035 light grey or RAL 9005 black		ServerMAX		Universal Line						EUROline							
		W=600 mm D=1000 mm	W=800 mm D=1000 mm	W=600 mm D=600 mm	W=600 mm D=800 mm	W=600 mm D=1000 mm	W=800 mm D=600 mm	W=800 mm D=800 mm	W=800 mm D=1000 mm	W=600 mm D=600 mm	W=600 mm D=800 mm	W=600 mm D=1000 mm	W=800 mm D=800 mm	W=800 mm D=1000 mm			
Part Number	Product Definition	WxDxH (mm)	COMPATIBILITY														
E44RM45 11	19" Rack mount shelf 1U front, 1U rear connection on 19" profile depth=450 mm Adjustable on depth	483x450x44					X					X			X		X
E44RM45 21	19" Rack Mount shelf 2U front, 1U rear connection on 19" profile depth=450 mm Adjustable on depth	483x450x88					X					X			X		X
E44RM55 21	19" Rack Mount shelf 2U front, 1U rear connection on 19" profile depth=550 mm Adjustable on depth	483x550x88					X	X				X	X		X	X	X

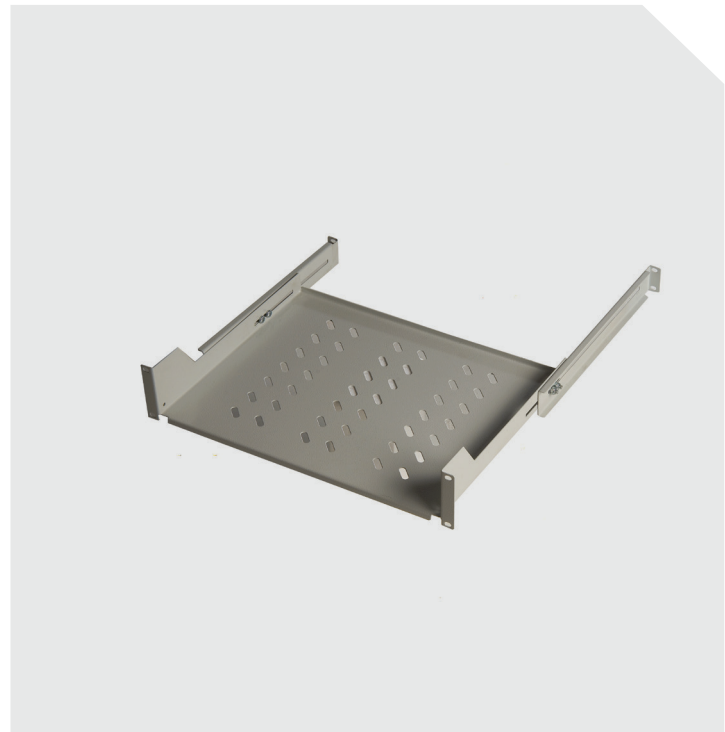
## Fixed and Sliding Shelf - Heavy Duty Type Rack Mount (19" front - 19" rear)

4 point , fixing directly to 19" mounting angles Vented, material sheet steel Adjustable depth Load carrying capacity: 100 kg for fixed shelves / 65 kg for sliding shelves Colour: RAL 7035 light grey or RAL 9005 black		ServerMAX		Universal Line						EUROline						
		W=600 mm D=1000 mm	W=800 mm D=1000 mm	W=600 mm D=600 mm	W=600 mm D=800 mm	W=600 mm D=1000 mm	W=800 mm D=600 mm	W=800 mm D=800 mm	W=800 mm D=1000 mm	W=600 mm D=600 mm	W=600 mm D=800 mm	W=600 mm D=1000 mm	W=800 mm D=800 mm	W=800 mm D=1000 mm		
Part Number	Product Definition	WxDxH (mm)	COMPATIBILITY													
M55 SR720	19" Heavy Duty type fixed shelf adjustable in depth	483x720x50	X	X			X				X			X		X
M55 HR720	19" Sliding shelf, vented, heavy duty type, complete with rear cable management system, enclosure depth=1000 mm	483x720x50	X	X			X				X			X		X

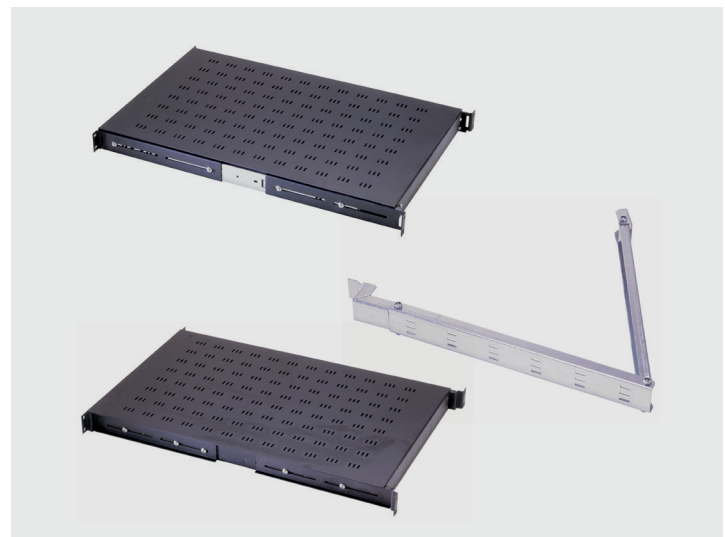


## FREE STANDING

ECOline				RELAYrack		
W=600 mm D=600 mm	W=600 mm D=800 mm	W=600 mm D=1000 mm	W=800 mm D=800 mm	Single frame D=600 mm	Double frame D=800 mm	Double frame D=1000 mm
<b>COMPATIBILITY</b>						
	X		X		X	
	X		X		X	
	X	X	X		X	X



ECOline				RELAYrack		
W=600 mm D=600 mm	W=600 mm D=800 mm	W=600 mm D=1000 mm	W=800 mm D=800 mm	Single frame D=600 mm	Double frame D=800 mm	Double frame D=1000 mm
<b>COMPATIBILITY</b>						
		X				X
		X				X



# ACCESSORIES free standing



Slide Rails															
Side rails are designed to support heavy 19" devices by mounting to the 19" mounting angles at the sides Load carrying capacity: 100 kg Cover: Galvanised			ServerMAX		Universal Line						EUROline				
			W=600 mm D=1000 mm	W=800 mm D=1000 mm	W=600 mm D=600 mm	W=600 mm D=800 mm	W=600 mm D=1000 mm	W=800 mm D=600 mm	W=800 mm D=800 mm	W=800 mm D=1000 mm	W=600 mm D=600 mm	W=600 mm D=800 mm	W=600 mm D=1000 mm	W=800 mm D=800 mm	W=800 mm D=1000 mm
Part Number	Product Definition	WxDxH (mm)	COMPATIBILITY												
M44RLD60	L type support slide rail, enclosure depth=600 mm (1 set=2 pcs.)	330x60x44			X				X				X		
M44RLD80	L type support slide rail, enclosure depth=800 mm (1 set=2 pcs.)	490x60x44				X				X			X	X	
M44RLD100	L type support slide rail, enclosure depth=1000 mm (1 set=2 pcs.)	730x65x44	X	X			X				X		X	X	

Keyboard Drawer 1U 19" - lockable															
1U, lockable drawer for keyboards up to 410 mm width 19" rack mount, adjustable depth Material: sheet steel Load carrying capacity: 25 kg Colour: RAL 7035 light grey or RAL 9005 black			ServerMAX		Universal Line						EUROline				
			W=600 mm D=1000 mm	W=800 mm D=1000 mm	W=600 mm D=600 mm	W=600 mm D=800 mm	W=600 mm D=1000 mm	W=800 mm D=600 mm	W=800 mm D=800 mm	W=800 mm D=1000 mm	W=600 mm D=600 mm	W=600 mm D=800 mm	W=600 mm D=1000 mm	W=800 mm D=800 mm	W=800 mm D=1000 mm
Part Number	Product Definition	WxDxH (mm)	COMPATIBILITY												
E44DRW 1U	1U 19" Keyboard drawer up to depth=800 mm cabinets, for D=1000 mm cabinet usage extra brackets available in package	483x400x44	X	X	X	X	X	X	X	X	X	X	X	X	

FREE STANDING

FREE STANDING						
ECOline				RELAYrack		
W=600 mm D=600 mm	W=600 mm D=800 mm	W=600 mm D=1000 mm	W=800 mm D=800 mm	Single frame D=600 mm	Double frame D=800 mm	Double frame D=1000 mm
COMPATIBILITY						
X						
	X		X		X	
		X				



FREE STANDING						
ECOline				RELAYrack		
W=600 mm D=600 mm	W=600 mm D=800 mm	W=600 mm D=1000 mm	W=800 mm D=800 mm	Single frame D=600 mm	Double frame D=800 mm	Double frame D=1000 mm
COMPATIBILITY						
X	X	X	X		X	X



# ACCESSORIES free standing



Drawer 19" - lockable																	
1U, lockable storage for notebook, files, CD, programming documents and so on. 19" rack mount, adjustable depth Material: sheet steel Load carrying capacity: 25 kg Colour: RAL 7035 light grey or RAL 9005 black			ServerMAX			Universal Line						EUROline					
			W=600 mm D=1000 mm	W=800 mm D=1000 mm	W=600 mm D=600 mm	W=600 mm D=800 mm	W=600 mm D=1000 mm	W=800 mm D=600 mm	W=800 mm D=800 mm	W=800 mm D=1000 mm	W=600 mm D=600 mm	W=600 mm D=800 mm	W=600 mm D=1000 mm	W=800 mm D=600 mm	W=800 mm D=800 mm	W=800 mm D=1000 mm	
Part Number	Product Definition	WxDxH (mm)	COMPATIBILITY														
M44CEK2U	2U 19" drawer, lockable suitable up to depth=800 mm Cabinets, for D=1000 mm cabinet usage extra brackets available in package	483x400x88	X	X	X	X	X	X	X	X	X	X	X	X	X		
M44CEK3U	3U 19" drawer, lockable suitable up to depth=800 mm Cabinets, for D=1000 mm cabinet usage extra brackets available in package	483x400x133	X	X	X	X	X	X	X	X	X	X	X	X	X		

Castor - Levelling Feet																	
Rotational type, heavy duty 2 ea. front are lockable Load capacity per castor: 250 kg Levelling feet: Possible to adjust height of the feet from the floor Load capacity per levelling feet: 250 kg			ServerMAX			Universal Line						EUROline					
			W=600 mm D=1000 mm	W=800 mm D=1000 mm	W=600 mm D=600 mm	W=600 mm D=800 mm	W=600 mm D=1000 mm	W=800 mm D=600 mm	W=800 mm D=800 mm	W=800 mm D=1000 mm	W=600 mm D=600 mm	W=600 mm D=800 mm	W=600 mm D=1000 mm	W=800 mm D=600 mm	W=800 mm D=800 mm	W=800 mm D=1000 mm	
Part Number	Product Definition	WxDxH (mm)	COMPATIBILITY														
M22 TKGR1	Castor group, 2ea. Front: lockable, rotatable, 2ea.rear: rotatable Castor Group, 4point fixing, 1set=4ea.	70x80x80	X	X	X	X	X	X	X	X	X						
M22 DRTGR1 EU	Castor group, 2ea. Front: lockable, rotatable, 2ea.rear: rotatable Castor Group, 4point fixing, 1set=4ea.	70x80x80										X	X	X	X		
M22 DRTGR	Castor group, 2ea. Front: lockable, rotatable, 2ea.rear: rotatable Castor Group, 1point fixing, 1set=4ea Load capacity=25kg./castor	50x80x80															
M11 PNY02	Levelling feet, PVC (1set=4ea), adjustable	45xh (minh=30 maxh=45)	X	X	X	X	X	X	X	X	X	X	X	X	X		
M11 PNY35	Heavy duty type levelling feet, metal, inner filled with rubber (1set=4ea), height=35 mm, adjustable	45xh (minh=35 maxh=50)	X	X	X	X	X	X	X	X	X	X	X	X	X		
M11 PNY99	Heavy duty type levelling feet, metal, inner filled with rubber (1set=4ea), height=90 mm, adjustable	45xh (minh=35 maxh=90)	X	X	X	X	X	X	X	X	X	X	X	X	X		

FREE STANDING

ECOline				RELAYrack		
W=600 mm D=600 mm	W=600 mm D=800 mm	W=600 mm D=1000 mm	W=800 mm D=800 mm	Single frame D=600 mm	Double frame D=800 mm	Double frame D=1000 mm
COMPATIBILITY						
X	X	X	X			
X	X	X	X			



ECOline				RELAYrack		
W=600 mm D=600 mm	W=600 mm D=800 mm	W=600 mm D=1000 mm	W=800 mm D=800 mm	Single frame D=600 mm	Double frame D=800 mm	Double frame D=1000 mm
COMPATIBILITY						
X	X	X	X			
				X	X	X
X	X	X	X	X	X	X
X	X	X	X	X	X	X
X	X	X	X	X	X	X



# ACCESSORIES free standing



## Cover Plate for Bottom for EUROline

8 screws only for fixing Complete with sliding type standard Estap cable entry mechanism			ServerMAX		Universal Line						EUROline							
			W=600 mm D=1000 mm	W=800 mm D=1000 mm	W=600 mm D=600 mm	W=600 mm D=800 mm	W=600 mm D=1000 mm	W=800 mm D=600 mm	W=800 mm D=800 mm	W=800 mm D=1000 mm	W=600 mm D=600 mm	W=600 mm D=800 mm	W=600 mm D=1000 mm	W=800 mm D=800 mm	W=800 mm D=1000 mm			
Part Number	Product Definition	WxDxH (mm)	COMPATIBILITY															
EU BP66	Width=600 Depth=600 cover plate	600x600												X				
EU BP68	Width=600 Depth=800 cover plate	600x800													X			
EU BP88	Width=800 Depth=800 cover plate	800x800															X	
EU BP610	Width=600 Depth=1000 cover plate	600x1000														X		
EU BP810	Width=800 Depth=1000 cover plate	800x1000																X

## Floor fixing kit

Floor fixing kit is used to fix the cabinet on floor. It protects the cabinet against to tilt. Material: Sheet steel Colour: RAL 7035 light grey or RAL 9005 black			ServerMAX		Universal Line						EUROline							
			W=600 mm D=1000 mm	W=800 mm D=1000 mm	W=600 mm D=600 mm	W=600 mm D=800 mm	W=600 mm D=1000 mm	W=800 mm D=600 mm	W=800 mm D=800 mm	W=800 mm D=1000 mm	W=600 mm D=600 mm	W=600 mm D=800 mm	W=600 mm D=1000 mm	W=800 mm D=800 mm	W=800 mm D=1000 mm			
Part Number	Product Definition	WxDxH (mm)	COMPATIBILITY															
M44DPR01 X	Floor fixing kit width=600 mm	W=600			X	X	X											
M44DPR02 X	Floor fixing kit width=800 mm	W=800							X	X	X							
M44DPR03 X	Floor fixing kit width=600 mm	W=600	X															
M44DPR04 X	Floor fixing kit width=800 mm	W=800		X														

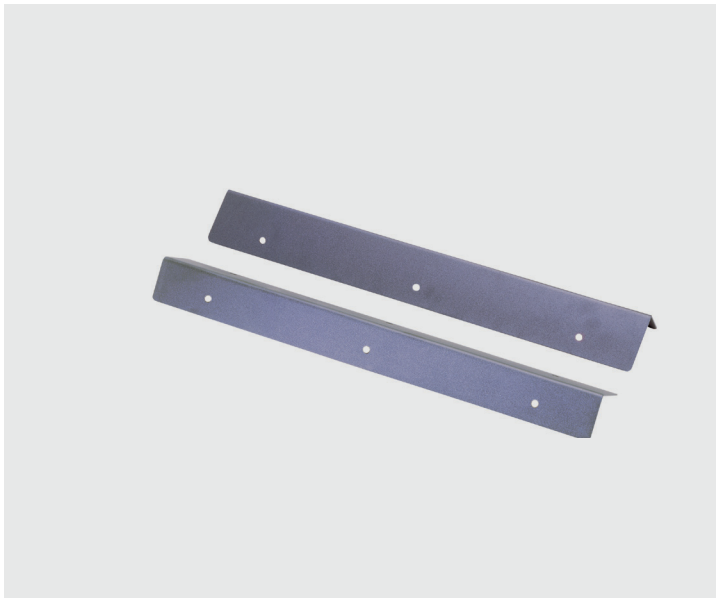
- X = A - Usage with plinth
- B - Usage with castor group
- C - Usage with levelling feet

FREE STANDING

ECOline				RELYrack		
W=600 mm D=600 mm	W=600 mm D=800 mm	W=600 mm D=1000 mm	W=800 mm D=800 mm	Single frame D=600 mm	Double frame D=800 mm	Double frame D=1000 mm
COMPATIBILITY						



ECOline				RELYrack		
W=600 mm D=600 mm	W=600 mm D=800 mm	W=600 mm D=1000 mm	W=800 mm D=800 mm	Single frame D=600 mm	Double frame D=800 mm	Double frame D=1000 mm
COMPATIBILITY						



# ACCESSORIES free standing



Plinth													
Plinth is designed to higher the cabinet 100 mm up from the floor. Inside is used for cable management and storage for cable bundles. It has 4 side removable covers, at rear side there is a brushed cable entry. Material: Sheet steel Height: 100 mm Colour: RAL 7035 light grey or RAL 9005 black	ServerMAX		Universal Line						EUROline				
	W=600 mm D=1000 mm	W=800 mm D=1000 mm	W=600 mm D=600 mm	W=600 mm D=800 mm	W=600 mm D=1000 mm	W=800 mm D=600 mm	W=800 mm D=800 mm	W=800 mm D=1000 mm	W=600 mm D=600 mm	W=600 mm D=800 mm	W=600 mm D=1000 mm	W=800 mm D=800 mm	W=800 mm D=1000 mm
Part Number	Product Definition	WxDxH (mm)	COMPATIBILITY										
M11 PNT66	Plinth width=600 mm depth=600 mm	600x600x100			X								
M11 PNT68	Plinth width=600 mm depth=800 mm	600x780x100				X							
M11 PNT86	Plinth width=800 mm depth=600 mm	780x600x100						X					
M11 PNT88	Plinth width=800 mm depth=800 mm	780x780x100							X				
M11 PNT61	Plinth width=600 mm depth=1000 mm	600x1000x100					X						
M11 PNT81	Plinth width=800 mm depth=1000 mm	780x1000x100								X			
M11 PNT610 SRV	Plinth width=600 mm depth=1000 mm with balancing bars	600x1000x100	X										
M11 PNT810 SRV	Plinth width=800 mm depth=1000 mm with balancing bars	780x1000x100		X									
M11 PNT66 EU	Plinth width=600 mm depth=600 mm	600x600x100								X			
M11 PNT68 EU	Plinth width=600 mm depth=800 mm	600x780x100									X		
M11 PNT88 EU	Plinth width=800 mm depth=800 mm	780x780x100										X	
M11 PNT610 EU	Plinth width=600 mm depth=1000 mm	600x1000x100										X	
M11 PNT810 EU	Plinth width=800 mm depth=1000 mm	780x1000x100											X
M11 PNT66 ECO	Plinth width=600 mm depth=600 mm	600x600x100											
M11 PNT68 ECO	Plinth width=600 mm depth=800 mm	600x800x100											
M11 PNT88 ECO	Plinth width=600 mm depth=800 mm	800x800x100											



FREE STANDING

ECOline				RELAYrack		
W=600 mm D=600 mm	W=600 mm D=800 mm	W=600 mm D=1000 mm	W=800 mm D=800 mm	Single frame D=600 mm	Double frame D=800 mm	Double frame D=1000 mm

COMPATIBILITY						
X						
	X					
			X			



# ACCESSORIES free standing



Baying kit																
It is used for buying of cabinets. The vertical uprights can be connected to each other by using buying kit Material: Sheet steel Cover: Galvanised			ServerMAX			Universal Line						EUROline				
			W=600 mm D=1000 mm	W=800 mm D=1000 mm	W=600 mm D=600 mm	W=600 mm D=800 mm	W=600 mm D=1000 mm	W=800 mm D=600 mm	W=800 mm D=800 mm	W=800 mm D=1000 mm	W=600 mm D=600 mm	W=600 mm D=800 mm	W=600 mm D=1000 mm	W=800 mm D=800 mm	W=800 mm D=1000 mm	
Part Number	Product Definition	WxDxH (mm)	COMPATIBILITY													
M44 BLG01	Baying kit	46x130x23	X	X	X	X	X	X	X	X	X					
M44 BLG02	Baying kit	58x48x55														
M44 BLG03	Baying kit	58x48x56										X	X	X		

Fixings																
Steel M6x15 mm screw M6 caged nut M6 washer			ServerMAX			Universal Line						EUROline				
			W=600 mm D=1000 mm	W=800 mm D=1000 mm	W=600 mm D=600 mm	W=600 mm D=800 mm	W=600 mm D=1000 mm	W=800 mm D=600 mm	W=800 mm D=800 mm	W=800 mm D=1000 mm	W=600 mm D=600 mm	W=600 mm D=800 mm	W=600 mm D=1000 mm	W=800 mm D=800 mm	W=800 mm D=1000 mm	
Part Number	Product Definition	WxDxH (mm)	COMPATIBILITY													
KFS 6X15	M6 caged nut, screw, washer (1set=20ea)	9.5x9.5	X	X	X	X	X	X	X	X	X	X	X	X		
KFS 6X16 50	M6 caged nut, screw, washer (1set=50ea)	9.5x9.6	X	X	X	X	X	X	X	X	X	X	X	X		

Grounding Kit																
6ea. Copper cable-earthing leads Potential equalization busbar for earth continuity system			ServerMAX			Universal Line						EUROline				
			W=600 mm D=1000 mm	W=800 mm D=1000 mm	W=600 mm D=600 mm	W=600 mm D=800 mm	W=600 mm D=1000 mm	W=800 mm D=600 mm	W=800 mm D=800 mm	W=800 mm D=1000 mm	W=600 mm D=600 mm	W=600 mm D=800 mm	W=600 mm D=1000 mm	W=800 mm D=800 mm	W=800 mm D=1000 mm	
Part Number	Product Definition	WxDxH (mm)	COMPATIBILITY													
M44PEB01	Grounding kit 6ea.earthing leads+copper busbar	-	X	X	X	X	X	X	X	X	X	X	X	X		
M44PEB04	Earthing lead set for free standing cabinets	-	X	X	X	X	X	X	X	X	X	X	X	X		

## FREE STANDING

ECOnline				RELAYrack		
W=600 mm D=600 mm	W=600 mm D=800 mm	W=600 mm D=1000 mm	W=800 mm D=800 mm	Single frame D=600 mm	Double frame D=800 mm	Double frame D=1000 mm
COMPATIBILITY						
				X	X	X



ECOnline				RELAYrack		
W=600 mm D=600 mm	W=600 mm D=800 mm	W=600 mm D=1000 mm	W=800 mm D=800 mm	Single frame D=600 mm	Double frame D=800 mm	Double frame D=1000 mm
COMPATIBILITY						
X	X	X	X	X	X	X
X	X	X	X	X	X	X



ECOnline				RELAYrack		
W=600 mm D=600 mm	W=600 mm D=800 mm	W=600 mm D=1000 mm	W=800 mm D=800 mm	Single frame D=600 mm	Double frame D=800 mm	Double frame D=1000 mm
COMPATIBILITY						
X	X	X	X	X	X	X
X	X	X	X	X	X	X



# ACCESSORIES free standing



## Lighting Fixture

19", 1U ON/OFF switch controlled or automatic door switch controlled 220 Vac	ServerMAX		Universal Line						EUROline					
	W=600 mm D=1000 mm	W=800 mm D=1000 mm	W=600 mm D=600 mm	W=600 mm D=800 mm	W=600 mm D=1000 mm	W=800 mm D=600 mm	W=800 mm D=800 mm	W=800 mm D=1000 mm	W=600 mm D=600 mm	W=600 mm D=800 mm	W=600 mm D=1000 mm	W=800 mm D=800 mm	W=800 mm D=1000 mm	

Part Number	Product Definition	WxDxH (mm)	COMPATIBILITY											
MAYDNL01	Lighting fixture 1U 19", with on/off switch - manually by hand	483x35x44	X	X	X	X	X	X	X	X	X	X	X	X
MAYDNL02	Lighting fixture 1U 19", with door switch - when the door opened, activated automatically	483x35x44	X	X	X	X	X	X	X	X	X	X	X	X

## 19" Mounting Angles - Profiles

All Estap cabinets have delivered with 19" mounting angles. If any usage and need extra profiles then you can order as followed. Cover: Galvanised steel	ServerMAX		Universal Line						EUROline					
	W=600 mm D=1000 mm	W=800 mm D=1000 mm	W=600 mm D=600 mm	W=600 mm D=800 mm	W=600 mm D=1000 mm	W=800 mm D=600 mm	W=800 mm D=800 mm	W=800 mm D=1000 mm	W=600 mm D=600 mm	W=600 mm D=800 mm	W=600 mm D=1000 mm	W=800 mm D=800 mm	W=800 mm D=1000 mm	

Part Number	Product Definition	WxDxH (mm)	COMPATIBILITY											
CMD 26U SRV	26U 19" mounting angles 1 set=2ea. (left+right)	31x43x1159	X				X							
CMD 36U SRV	36U 19" mounting angles 1 set=2ea. (left+right)	31x43x1603	X				X							
CMD 42U SRV	42U 19" mounting angles 1 set=2ea. (left+right)	31x43x1870	X	X			X			X				
CMD 47U SRV	47U 19" mounting angles 1 set=2ea. (left+right)	31x43x2092	X	X			X			X				
CMD 16U UNV	16U 19" mounting angles 1 set=2ea. (left+right)	31x54x714			X	X								
CMD 20U UNV	20U 19" mounting angles 1 set=2ea. (left+right)	31x54x892			X	X								
CMD 22U UNV	22U 19" mounting angles 1 set=2ea. (left+right)	31x54x981			X	X								
CMD 26U UNV	26U 19" mounting angles 1 set=2ea. (left+right)	31x54x1159			X	X								
CMD 32U UNV	32U 19" mounting angles 1 set=2ea. (left+right)	31x54x1425			X	X	X	X						
CMD 36U UNV	36U 19" mounting angles 1 set=2ea. (left+right)	31x54x1603			X	X	X	X						
CMD 39U UNV	39U 19" mounting angles 1 set=2ea. (left+right)	31x54x1736			X	X	X	X						
CMD 42U UNV	42U 19" mounting angles 1 set=2ea. (left+right)	31x54x1870			X	X	X	X						
CMD 44U UNV	44U 19" mounting angles 1 set=2ea. (left+right)	31x54x1959			X	X	X	X						
CMD 47U UNV	47U 19" mounting angles 1 set=2ea. (left+right)	31x54x2092			X	X	X	X						

FREE STANDING

FREE STANDING						
ECOline				RELAYrack		
W=600 mm D=600 mm	W=600 mm D=800 mm	W=600 mm D=1000 mm	W=800 mm D=800 mm	Single frame D=600 mm	Double frame D=800 mm	Double frame D=1000 mm
COMPATIBILITY						
X	X	X	X	X	X	X
X	X	X	X	X	X	X



FREE STANDING						
ECOline				RELAYrack		
W=600 mm D=600 mm	W=600 mm D=800 mm	W=600 mm D=1000 mm	W=800 mm D=800 mm	Single frame D=600 mm	Double frame D=800 mm	Double frame D=1000 mm
COMPATIBILITY						
		X				
		X				
		X				
X	X					
X	X					
X	X					
X	X		X			



# ACCESSORIES free standing



## Basic PDU

Estap has a wide range of PDU offer. Please contact with sales departments for the other PDU needs.

### ServerMAX

### Universal Line

### EUROline

W=600 mm D=1000 mm	W=800 mm D=1000 mm	W=600 mm D=600 mm	W=600 mm D=800 mm	W=600 mm D=1000 mm	W=800 mm D=600 mm	W=800 mm D=800 mm	W=800 mm D=1000 mm	W=600 mm D=600 mm	W=600 mm D=800 mm	W=600 mm D=1000 mm	W=800 mm D=800 mm	W=800 mm D=1000 mm
-----------------------	-----------------------	----------------------	----------------------	-----------------------	----------------------	----------------------	-----------------------	----------------------	----------------------	-----------------------	----------------------	-----------------------

Part Number	Product Definition	WxDxH (mm)	COMPATIBILITY												
M443AL-ES	3xDIN49440 Socket Schuko PDU, 19" 1U, aluminium profile frame, 1x16A MCB, 4000 Watt, 250V AC, 3x1.5 mm <sup>2</sup> , 3m cord with DIN 49441 plug, CE mark	482.6 (19") x 44.4x44.4	X	X	X	X	X	X	X	X	X	X	X	X	X
M446AL-ES	6xDIN49440 Socket Schuko PDU, 19" 1U, aluminium profile frame, 1x16A MCB, 4000 Watt, 250V AC, 3x1.5 mm <sup>2</sup> , 3m cord with DIN 49441 plug, CE mark	482.6 (19") x 44.4x44.4	X	X	X	X	X	X	X	X	X	X	X	X	X
M446STD-ES	6xDIN49440 Socket Schuko PDU, 19" 1U, aluminium profile frame, 16A On/Off Lighted Switch, 4000 Watt, 250V AC, 3x1.5 mm <sup>2</sup> , 3m cord with DIN 49441 plug, CE mark	482.6 (19") x 44.4x44.4	X	X	X	X	X	X	X	X	X	X	X	X	X
M449ALC-ES	9xDIN49440 Socket Schuko PDU, 19" 2U, aluminium profile frame, 1x16A MCB, 4000 Watt, 250V AC, 3x1.5 mm <sup>2</sup> , 3m cord with DIN 49441 plug, CE mark	482.6 (19") x 44.4x88.8	X	X	X	X	X	X	X	X	X	X	X	X	X
M446AL UK-ES	6xBS1363 UK Socket PDU, 19" 1U, aluminium profile frame, 16A On/Off Lighted Switch, 4000 Watt, 250V AC, 3x1.5 mm <sup>2</sup> , 3m cord with 13A BS1363 plug, CE mark	482.6 (19") x 44.4x44.4	X	X	X	X	X	X	X	X	X	X	X	X	X
M441842ALD-ES	18xDIN49440 Socket Schuko PDU – double circuit (9+9) ZeroU, aluminium profile frame, 2x16A MCB, 250vac, suitable for 42U rack mounting, without cord	1890x42x60	42U X	42U X	42U X	42U X	42U X	42U X	42U X	42U X	42U X				
M446ALD-ES	6xDIN49440 Socket Schuko PDU, -double circuit (3+3) 19" with aluminium profile frame, 2x16A MCB, 4000 Watt, 250V AC, 3x1.5 mm <sup>2</sup> , 2.5m cord with DIN 49441 plug	482.6 (19") x 42x60	X	X	X	X	X	X	X	X	X	X	X	X	X
M44 6AL IEC-ES	6xIEC 320 C13 Socket PDU, 19" aluminium profile frame, 1x16A MCB, 4000 Watt, 250V AC, IEC 320 C14 plug	482.6 (19")x 42x60	X	X	X	X	X	X	X	X	X	X	X	X	X

FREE STANDING

FREE STANDING						
ECOline				RELAYrack		
W=600 mm D=600 mm	W=600 mm D=800 mm	W=600 mm D=1000 mm	W=800 mm D=800 mm	Single frame D=600 mm	Double frame D=800 mm	Double frame D=1000 mm
COMPATIBILITY						
X	X	X	X	X	X	X
X	X	X	X	X	X	X
X	X	X	X	X	X	X
X	X	X	X	X	X	X
X	X	X	X	X	X	X
X	X	X	X	X	X	X
X	X	X	X	X	X	X



# ACCESSORIES free standing



Metered PDU																
Estep has metered PDU range. Please contact with sales departments for the other PDU needs.			ServerMAX			Universal Line						EUROline				
			W=600 mm D=1000 mm	W=800 mm D=1000 mm	W=600 mm D=600 mm	W=600 mm D=800 mm	W=600 mm D=1000 mm	W=800 mm D=600 mm	W=800 mm D=800 mm	W=800 mm D=1000 mm	W=600 mm D=600 mm	W=600 mm D=800 mm	W=600 mm D=1000 mm	W=800 mm D=800 mm	W=800 mm D=1000 mm	
Part Number	Product Definition	WxDxH (mm)	COMPATIBILITY													
M446AL IEC AMP	6xIEC 320 C13 Socket PDU with Ampermeter Display, 19" 1U, aluminium profile frame, 1x16A MCB, 4000 Watt, 250V AC, 3x2.5 mm <sup>2</sup> , 3m cord with IEC60309 plug (16A 2P+E), CE mark	482.6 (19") x 44.4 x 44.4	X	X	X	X	X	X	X	X	X	X	X	X		
M44 24AL IEC AMP MCB	24xIEC 320 (20xC13 + 4xC19) Socket PDU with Ampermeter Display, ZeroU, aluminium profile frame, 2x16A MCB, 8000 Watt, 250V AC, 3x6.0 mm <sup>2</sup> , 3m cord with IEC60309 plug (32A 2P+E), CE mark	1648 x 44.4 x 62	42U 47U x	42U 47U x	42U 47U x	42U 47U x	42U 47U x	42U 47U x	42U 47U x	42U 47U x						

Monitored & Managed IP PDU																
Please contact with sales departments for the other PDU needs.			ServerMAX			Universal Line						EUROline				
			W=600 mm D=1000 mm	W=800 mm D=1000 mm	W=600 mm D=600 mm	W=600 mm D=800 mm	W=600 mm D=1000 mm	W=800 mm D=600 mm	W=800 mm D=800 mm	W=800 mm D=1000 mm	W=600 mm D=600 mm	W=600 mm D=800 mm	W=600 mm D=1000 mm	W=800 mm D=800 mm	W=800 mm D=1000 mm	
Part Number	Product Definition	WxDxH (mm)	COMPATIBILITY													
M44 20AL IEC MONITOR	20xIEC 320 (16xC13 + 4xC19) Socket MONITORED IP PDU with Ampermeter Display, ZeroU, aluminium profile frame, 2x16A MCB, 8000 Watt, 250V AC, 3x6.0 mm <sup>2</sup> , 3m cord with IEC60309 plug (32A 2P+E), CE mark, daisy-chain function upto 10 units, Remote Monitoring por	1744 x 88.8 x 44.4	42U 47U x	42U 47U x	42U 47U x	42U 47U x	42U 47U x	42U 47U x	42U 47U x	42U 47U x						
M44 20AL IEC MANAGED	20xIEC 320 (16xC13 + 4xC19) Socket, Socket Based MANAGED IP PDU with Ampermeter Display, ZeroU, aluminium profile frame, 2x16A MCB, 8000 Watt, 250V AC, 3x6.0 mm <sup>2</sup> , 3m cord with IEC60309 plug (32A 2P+E), CE mark, daisy-chain function upto 10 units, Remote Mo	1744 x 88.8 x 44.4	42U 47U x	42U 47U x	42U 47U x	42U 47U x	42U 47U x	42U 47U x	42U 47U x	42U 47U x						



FREE STANDING

ECOline				RELAYrack		
W=600 mm D=600 mm	W=600 mm D=800 mm	W=600 mm D=1000 mm	W=800 mm D=800 mm	Single frame D=600 mm	Double frame D=800 mm	Double frame D=1000 mm
COMPATIBILITY						
X	X	X	X	X	X	X



ECOline				RELAYrack		
W=600 mm D=600 mm	W=600 mm D=800 mm	W=600 mm D=1000 mm	W=800 mm D=800 mm	Single frame D=600 mm	Double frame D=800 mm	Double frame D=1000 mm
COMPATIBILITY						

