



Sharp NEC Display Solutions

Product Overview



Product Overview

Contents	Page
Desktop Displays	6
Large Format Displays	10
Protective and Mirror Glass Displays	17
Interactive Displays	19
Large Format Display Options	22
Open Modular Intelligence	24
Direct View LED	28
Projectors	35
Digital Cinema Projectors	39
Software	40
Service Plus	43

Sharp NEC Display Solutions brings together and integrates technology and expertise to create the ICT-enabled society of tomorrow.



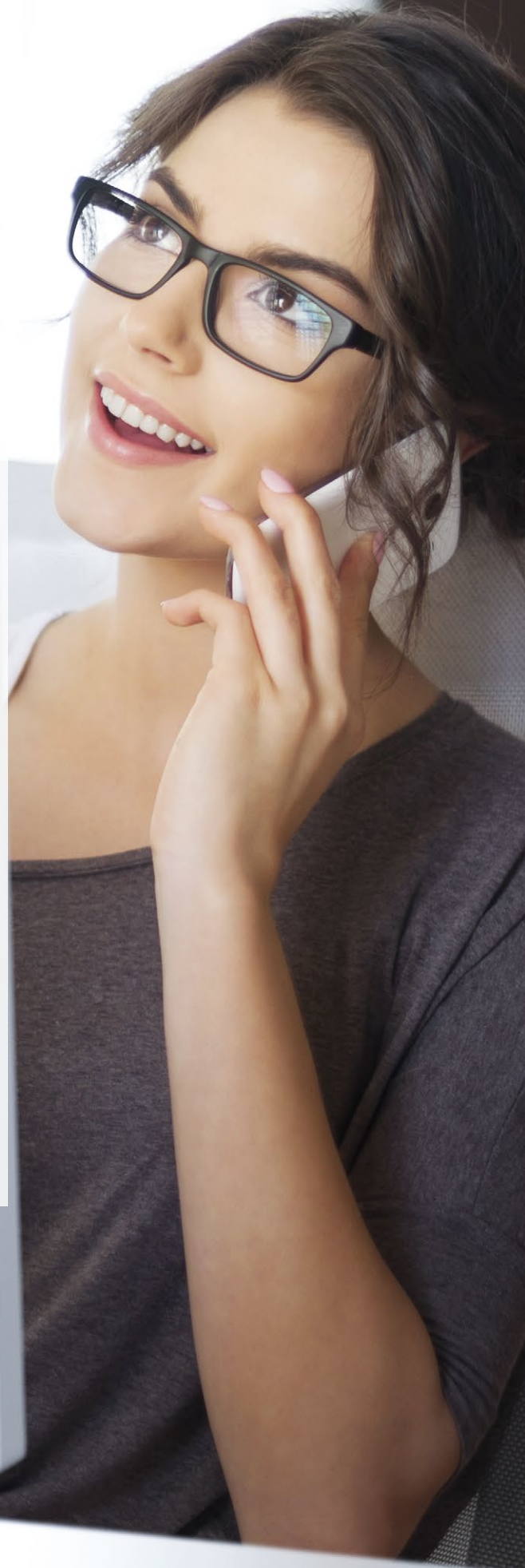
The Display Solutions Brand to Trust

Discover a world of bright choices, orchestrated from the widest display portfolio and fine tuned with decades of expertise leading innovation in the display industry. Whether it's informing visitors, increasing sales, improving collaboration and communication, performing critical tasks or simply delighting an audience, we make your business visible, with best choices, best care and best competence. Sharp/NEC offers the widest display portfolio available today, supported by a world-leading partner network and a reputation built on decades of trusted operation in demanding applications.

We help you create sustainable and reliable installations that improve business efficiency and lower operating costs. Desktop, meeting room, in-store, theatre-wide or across entire buildings, we provide state of the art digital surfaces that take the visual identity of your organisation to the next level. What's more, with our comprehensive range of display technologies and software solutions, we are not tied to any particular technology so we can focus on delivering the most appropriate technology for any individual need.

Sharp/NEC stands for future ready innovation and highest standards for the entire product lifecycle, meeting our customer's requirements in terms of performance and consistency, however critical the application. Expect more in terms of excellence and satisfaction, with lower failure rates and overall lower operating costs.

Visual performance starts here.



The Sharp/NEC Difference



From award-winning image quality,
to world-leading reliability:

The Sharp/NEC Difference.

Find out why partnering with us
puts you in safe hands.

1

A Name to Trust

An industry leading reputation for quality and reliability, providing mission critical performance to the world's leading names.

- 228 airports use NEC Displays
- 2.9M Large Format Displays shipped worldwide
- 5M+ Projectors delivered
- 30% of European cinemas use NEC DCI Projectors

2

Innovation is in our DNA

Pioneering technology developments which address genuine customer needs.

- First EMC Class B certified LED installation
- Filter-free, sealed engine projection for zero maintenance
- Open Modular Intelligence (OMi) computing
- Award-winning super-silent projection



3

Unrivalled Quality

Longer lifecycles and lower operational costs.

- Innovative Japanese design, with professional components, ready for the most challenging applications
- Safe for use in public spaces with metal chassis for increased thermal protection and product longevity
- Superior award-winning image quality, increased contrast, uniformity and colour accuracy
- Choosing poor quality can lead to greater downtime, loss of revenue and damage to your brand

4 World's Widest Display Portfolio

We deliver perfect-fit solutions from the widest portfolio.

- Indoor and outdoor LCD and dvLED
- Engaging interactive and collaborative solutions
- Versatile Projection solutions
- Productivity-focused Desktop Displays
- Modular Computing / Software options



5 Unique Service

An unrivalled Service Partner network and support infrastructure.



- NEC serviceplus, guaranteed performance for the entire lifecycle
- 41 country, pan-European service infrastructure
- Global, European or local, tailored service level options
- Transparent, expandable warranties and value-added services

6 ONEGLOBAL Program

Supporting our international clients, a dedicated customer support program with a single point of contact.

- Centralised purchasing, global pricing and commercial terms
- Joint product strategy development
- Global standards for common aesthetics and user experience
- Pan-global network of peers and partners



7 Application Specialist

With specialist expertise in all sectors, we understand your unique needs and how people engage with you.

- Digital signage across corporate, education, retail, transport and hospitality sectors
- Meeting room, classroom, conferencing and personal workspace productivity
- Large venue presentation in corporate, education and leisure environments
- Control room, surveillance and monitoring

8 Partnerships & Alliances

NEC nurtures industry alliances to deliver the best customer offering, maintaining choice and flexibility.

- Cisco Meeting Room compatibility
- Crestron compatibility for AVoIP
- Quicklaunch™ integration for one-touch meetings



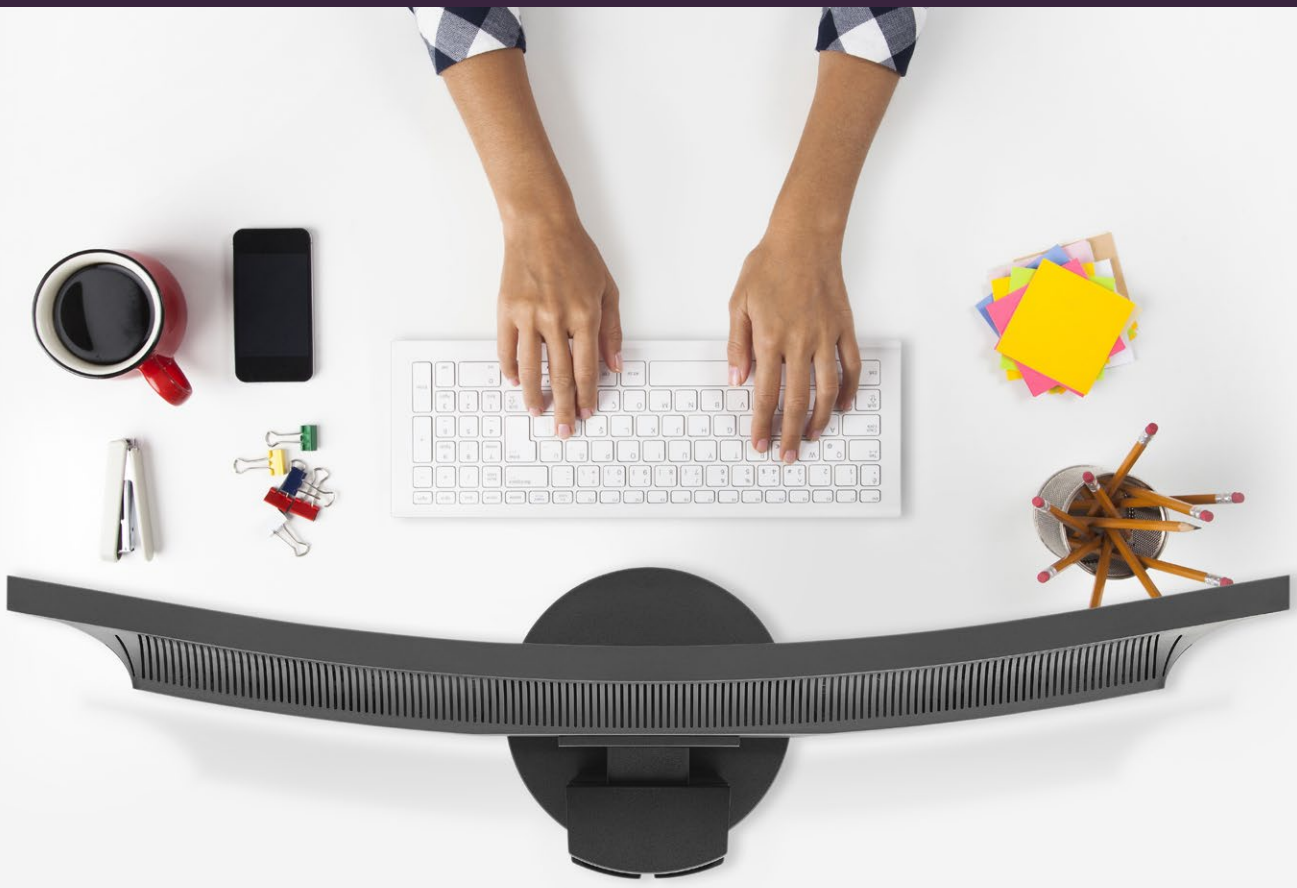
9 The Smallest things that Matter the Most

Committed to supporting a climate-neutral future.



- Improved use of recycled materials including 97.4% recycled parts for Large Format Displays
- Longer lifecycles and lower energy use
- Lower harmful emissions
- Packaging that is entirely recyclable

Desktop Displays



With a comprehensive range of Display Solutions, Sharp/NEC offers a desktop display for almost any requirement. From cost-conscious to mission-critical, Sharp/NEC's performance-oriented displays combine attractive lifestyle designs with health conscious ergonomics for corporate office, finance, control-room, small signage, creative and publishing applications.

Commercial Enterprise

- | | |
|-----------|--|
| E Series | Future proof displays for the performance-oriented workplace |
| EA Series | For the advanced ergonomic and high performance-oriented workplace |
| EX Series | Speciality displays for demanding workplaces in dedicated environments |

Professional

- | | |
|-----------|--|
| PA Series | Reference displays for colour precision applications |
|-----------|--|

3
YEARS
WARRANTY

UP TO
5
YEARS
OPTIONAL
WARRANTY


ECO
INNOVATION

E | EA Series | Commercial Enterprise

Performance-oriented displays with an attractive lifestyle design ideal for corporate users. High image quality and improved connectivity with advanced ergonomics to protect the well-being of the user; these displays, with their modern ultra-thin bezel design, have all the credentials today that will be demanded tomorrow.

17" to 27" 19" to 27"

E Series

EA Series



EX Series | Commercial Speciality

The 'Extra' Series of desktop displays offers extraordinary functionality to meet the speciality needs of niche usage scenarios. Curved displays for ultimate immersive ergonomic viewing and ultra-narrow bezel designs for efficient multi-display setups in trading or dispatching applications as well as for small and creative digital signage installations.

24" and 34"

EX Series

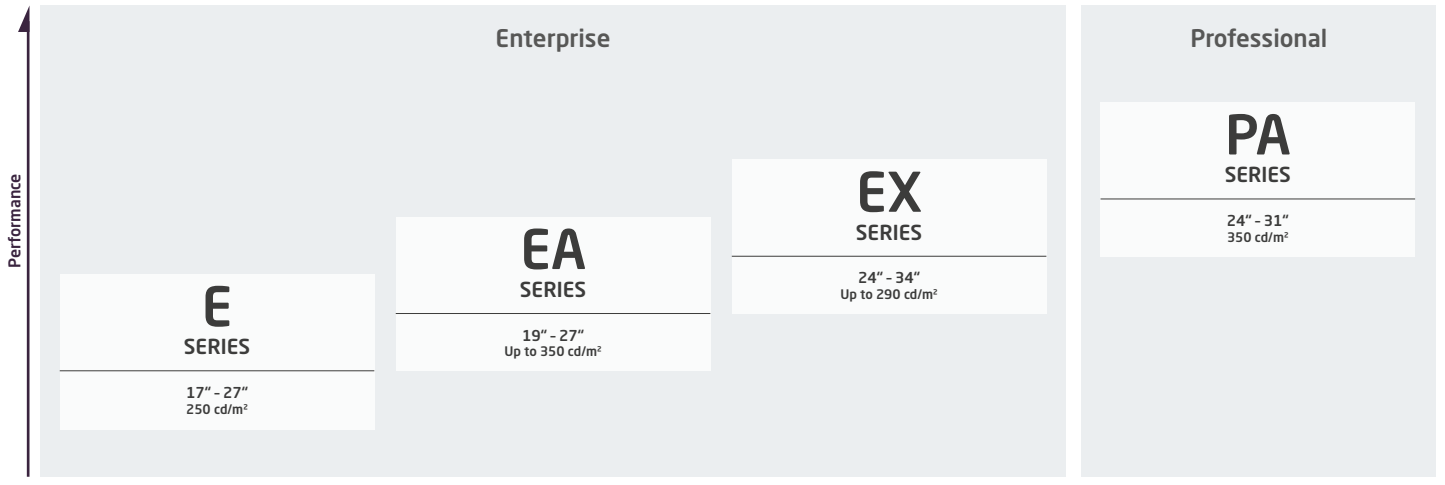


PA Series | Professional

For demanding precision applications used by creative professionals, photographers, video editors, CAD-CAM designers and engineers. Delivering superb performance, uncompromising image quality and outstanding colour reproduction, as well as class-leading ergonomics, this is the display for anyone who cares about their visual work.

24" to 31"

PA Series



E Series | Commercial Enterprise

MultiSync® Model	E172M	E221N	E223W	E233WMI	E241N	E242N	E243F
Order Code	60003582 (BK) 60003581 (WH)	60004224 (BK) 60004223 (WH)	60003334 (BK) 60003335 (WH)	60004376 (BK) 60004377 (WH)	60004222 (BK) 60004221 (WH)	60004990 (BK) 60004856 (WH)	60005203 (BK) 60005204 (WH)
Panel Technology	TN / W-LED	IPS / W-LED	TN / W-LED	IPS TFT W-LED	IPS / W-LED	IPS / W-LED	IPS / W-LED
Screen Size [inch / cm]	17 / 43	22 / 55	22 / 56	23 / 58	24 / 60	24 / 60	24 / 60
Aspect Ratio	5:4	16:9	16:10	16:9	16:9	16:9	16:9
Brightness (typ.) [cd/m²]	250	250	250	250	250	250	250
Contrast (typ.)	1000:1	1000:1	1000:1	1000:1	1000:1	1000:1	1000:1
Viewing Angle Hor / Vert [°]	170 / 160	178 / 178	170 / 160	170 / 160	178 / 178	178 / 178	178 / 178
Response Time (typ. G to G) [ms]	5	6	5	6	6	6	6
Colours [Mio.]	16.77	16.77	16.77	16.77	16.77	16.77	16.77
Resolution at 60 Hz	1280 x 1024	1920 x 1080	1680 x 1050	1920 x 1080	1920 x 1080	1920 x 1080	1920 x 1080
Connectivity	VGA, DP, HDMI	DP, HDMI, VGA	DP, DVI-D, VGA	DP, DVI-D, VGA	DP, HDMI, VGA	DP, HDMI, USB 3.1 (3 down, 1 up), VGA	USB Type C, DP, HDMI, USB 3.1 (3 down, 1 up), VGA
Power ON (factory setting) [W]	10	15	12	16	16	16	15
Power Saving Mode [W]	0.4	0.29	0.35	0.35	0.29	0.29	0.4
Internal Power Supply	●	●	●	●	●	●	●
Height Adjustable Stand [mm]	50	110	110	110	110	110	130
Other Ergonomics	tilt	tilt, swivel, rotate, low blue light, flicker free	tilt, swivel, rotate	tilt, swivel, rotate	tilt, swivel, rotate, low blue light, flicker free	tilt, swivel, rotate, low blue light, flicker free	tilt, swivel, rotate, low blue light, flicker free
Bezel Width T - B / L - R [mm]	17.5 / 14.2	1*	15.8 / 13.9	16.8 / 16.4	1*	1*	1*
Dimensions with stand (W x H x D) [mm]	368 x 359-409 x 230	488 x 360-470 x 214	504 x 383 x 214	544 x 375-485 x 214	539 x 374-484 x 214	539 x 374 -484x 214	538 x 333-463- x 190
Weight with stand [kg]	4.2	5.0	4.9	5.7	5.5	5.5	5.5
NaViSet Administrator 2	●	●	●	●	●	●	●

E Series | Commercial Enterprise

EA Series | Commercial Enterprise

MultiSync® Model	E245WMI	E271N	EA193MI	EA223WM	EA224WMI	EA231WU	EA234WMI
Order Code	60004113 (BK) 60004148 (WH)	60004496 (BK) 60004633 (WH)	60003586 (BK) 60003585 (WH)	60003294 (BK) 60003293 (WH)	60003336 (BK) 60003337 (WH)	60004781 (BK) 60004782 (WH)	60003588 (BK) 60003587 (WH)
Panel Technology	PLS TFT / W-LED	IPS TFT / W-LED	IPS / W-LED	TN / W-LED	IPS / W-LED	LED IPS TFT / W-LED	IPS / W-LED
Screen Size [inch / cm]	24 / 61	27 / 69	19 / 48	22 / 56	22 / 55	23 / 57	23 / 58
Aspect Ratio	16:10	16:9	5:4	16:10	16:9	16:10	16:9
Brightness (typ.) [cd/m²]	250	250	250	250	250	250	250
Contrast (typ.)	1000:1	1000:1	1000:1	1000:1	1000:1	1000:1	1000:1
Viewing Angle Hor / Vert [°]	178 / 178	178 / 178	178 / 178	170 / 160	178 / 178	178 / 178	178 / 178
Response Time (typ. G to G) [ms]	6	6	6	5	6	6	6
Colours [Mio.]	16.77	16.77	16.77	16.77	16.77	16.77	16.77
Resolution at 60 Hz	1920 x 1200	1920 x 1080	1280 x 1024	1680 x 1050	1920 x 1080	1920 x 1200	1920 x 1080
Connectivity	DP, DVI-D, VGA	DP,HDMI, VGA	DP, DVI-D, VGA	DP, DVI-D, USB 2.0 (4 down, 1 up), VGA	DP, DVI-D, HDMI, USB 2.0 (1 down, 4 up), VGA	DP, DVI-D, HDMI, USB 3.1 (3 down, 1 up), VGA	DVI-D, HDMI, USB 2.0 (4 down, 1 up), DP, VGA
Power ON (factory setting) [W]	21	16	16	13	15	15	22
Power Saving Mode [W]	0.26	0.26	0.35	0.5	0.43	0.31	0.5
Internal Power Supply	●	●	●	●	●	●	●
Height Adjustable Stand [mm]	110	130	110	130	130	150	130
Other Ergonomics	tilt, swivel, rotate, low blue light, flicker free	tilt, swivel, rotate	tilt, swivel, rotate	tilt, swivel, rotate	tilt,swivel, rotate	tilt, swivel, rotate, low blue light, flicker free	tilt, swivel, rotate
Bezel Width T - B / L - R [mm]	17.8 / 17.9	1*	16.5 / 14.9	15.8 / 13.9	15.8 / 14.7	0.8*	16.4 / 16.0
Dimensions with stand (W x H x D) [mm]	556 x 394 x 214	610 x 377-507 x 282	408 x 386-496 x 214	504 x 384 x 218	507 x 370 x 218	499 x 337-487 x 250	544 x 380-510 x 218
Weight with stand [kg]	5.9	8.1	5.9	5.6	5.6	5.9	6.4
NaViSet Administrator 2	●	●	●	●	●	●	●

* T / L - R

EA Series | Commercial Enterprise

MultiSync® Model	EA241WU	EA241F	EA245WMI-2	EA242F	EA271F	EA272F	EA271Q	EA271U
Order Code	60004676 (BK), 60004677 (WH)	60004786 (BK) 60004787 (WH)	60004486 (BK) 60004488 (WH)	60005032 (BK) 60005246 (WH)	60004304 (BK) 60004634 (WH)	60005033 (BK) 60005247 (WH)	60004303 (BK) 60004650 (WH)	60004302 (BK) 60004691 (WH)
Panel Technology	LED IPS TFT / W-LED	LED IPS TFT / W-LED	IPS / W-LED	LED IPS TFT / W-LED	AH-IPS / W - LED	AH-IPS / W - LED	PLS / W-LED	IPS / W-LED
Screen Size [inch / cm]	24 / 61	24 / 61	24 / 61	24 / 61	27 / 69	27 / 69	27 / 68	27 / 68
Aspect Ratio	16:10	16:9	16:10	16:9	16:9	16:9	16:9	16:9
Brightness (typ.) [cd/m²]	300	250	300	250	250	250	350	350
Contrast (typ.)	1000:1	1000:1	1000:1	1000:1	1000:1	1000:1	1000:1	1300:1
Viewing Angle Hor / Vert [°]	178 / 178	178 / 178	178 / 178	178 / 178	178 / 178	178 / 178	178 / 178	178 / 178
Response Time (typ. G to G) [ms]	5	5	6	5	6	6	6	5
Colours [Mio.]	16.77	16.77	16.77	16.77	16.77	16.77	16.77	16.77
Resolution at 60 Hz	1920 x 1200	1920 x 1080	1920 x 1200	1920 x 1080	1920 x 1080	1920 x 1080	2560 x 1440	3840 x 2160
Connectivity	DVI-D, DP, HDMI, VGA, USB 3.1 (3 down, 1 up)	DVI-D, DP, HDMI, VGA, USB 3.1 (3 down, 1 up)	DVI-D, DP, HDMI, D-Sub, USB 3.0 (3 down, 1 up,.)	USB Type C, DP, DP out, HDMI, USB 3.1 (3 down, 2 up), D-Sub 15 pin	DVI-D, HDMI, USB 3.1 (3 down, 1 up), VGA	USB Type C, DP, DP out, HDMI, USB 3.1 (3 down, 2 up), VGA	USB Type C, DVI-D, DP, HDMI, USB 3.1 (3 down, 1 up)	USB Type C, DP, HDMI, USB 3.1 (3 down, 1 up)
Power ON (factory setting) [W]	20	15	22	19	17	19	37	38
Power Saving Mode [W]	0.3	0.31	0.5	0.3	0.5	0.3	0.35	0.33
Internal Power Supply	●	●	●	●	●	●	●	●
Height Adjustable Stand [mm]	150	150	150	150	150	150	150	150
Other Ergonomics	tilt, swivel, rotate, low blue light, flicker free	tilt, swivel, rotate, low blue light, flicker free	tilt, swivel, rotate, low blue light, flicker free	tilt, swivel, rotate, low blue light, flicker free	tilt, swivel, rotate, low blue light, flicker free	tilt, swivel, rotate, low blue light, flicker free	tilt, swivel, rotate, low blue light, flicker free	tilt, swivel, rotate, low blue light, flicker free
Bezel Width T - B / L - R [mm]	0.8*	0.8*	0.8*	0.8*	1*	0.8*	1*	1*
Dimensions with stand (W x H x D) [mm]	532 x 365-515 x 250	538 x 337-487 x 250	532 x 365-515 x 250	538 x 337-487 x 250	610 x 377-527 x 250	610 x 377-527 x 250	612 x 378-528 x 250	612 x 378-528 x 250
Weight with stand [kg]	6.7	6.1	6.7	7	7.6	9.2	9.1	9.1
NaViSet Administrator 2	●	●	●	●	●	●	●	●

EX Series | Speciality

PA Series | Professional

MultiSync® Model	EX241UN	EX341R	PA243W	PA271Q	PA311D
Order Code	60004064(BK) 60004065 (WH)	60004231 (BK) 60004499 (WH)	60003860 (BK) 60004430 (WH)	60004305	60004941
Panel Technology	IPS / W-LED	VA / W-LED curved	AH-IPS / GB-R LED	AH-IPS / GB-R LED	IPS / W-LED
Screen Size [inch / cm]	24 / 60	34 / 86	24 / 61	27 / 69	31 / 80
Aspect Ratio	16:9	21:9	16:10	16:9	16:10
Colour Gamut AdobeRGB/sRGB Coverage [%]	-	-	107.3 / 112.4	107.3 / 112.4	107.3 / 112.4
Brightness (typ.) [cd/m²]	250	290	350	350	350
Contrast (typ.)	1000:1	3000:1	1000:1	1500:1	1500:1
Viewing Angle Hor / Vert [°]	178 / 178	178 / 178	178 / 178	178 / 178	178 / 178
Response Time (typ. G to G) [ms]	6	4	8	8	8
Colours [Mio.]	16.77	16.77	1074	1074	1074
Resolution at 60 Hz	1920 x 1080	3440 x 1440	1920 x 1200	2560 x 1440	4096 x 2160
Connectivity	DVI-D, DP, D-Sub, HDMI, USB 3.0 (3 down, 1 up)	2 DP, 2 HDMI, DP out, USB 3.0 (4 down, 2 up)	DP, Mini DP, HDMI, DVI-D, USB 2.0 (3 down, 2 up)	DP, DP out, Mini DP, HDMI, USB 3.1 (3 down, 2 up)	USB Type C, DP, 2 HDMI 2.0; USB 3.1 (3 down, 3 up)
Power ON (factory setting) [W]	19	62	27	50	84
Power Saving Mode [W]	0.3	1.0	0.3	0.3	0.5
Internal Power Supply	●	●	●	●	●
Height Adjustable Stand [mm]	100	130	150	150	150
Other Ergonomics	tilt, swivel, rotate, low blue light, flicker free		tilt, swivel, rotate	tilt, swivel, rotate	tilt, swivel, rotate
Bezel Width T - B / L - R [mm]	0.8*	1.55*	17.9 / 17.9	20 / 20.3	22.1 / 19.3
Dimensions with stand (W x H x D) [mm]	538 x 370 x 204	808 x 419 x 230	556 x 379 x 233	640 x 396 - 546 x 233	738 x 433 - 583 x 302
Weight with stand [kg]	5.6	10.5	8	9.7	14.9
NaViSet Administrator 2	●	●	●	●	●
MultiProfiler Software	-	-	●	●	●
SpectraView II	-	-	●	●	●

Large Format Displays



Large Format Displays (LFD) are an indispensable part of digital signage, as well as for presentations and interactive meeting room applications. Sharp/NEC stands for a safe investment secured by high quality components and design, plus high operational safety. With a broad choice of LFD ranges and numerous customisation options, Sharp/NEC delivers tailor-made display solutions.

3 YEARS WARRANTY
UP TO 5 YEARS OPTIONAL WARRANTY



Essential Displays

E Series Cost-efficient signage for essential demands at a low TCO

Midrange Displays

ME Series Essential professional features for entry level usage
 C Series Seamless integration with the slimmest NEC large format displays
 V Series Price performance champion for flexible and reliable signage
 M Series Enhanced performance for demanding mainstream applications
 MA Series Advanced performance for high-end or mission-critical environments

Professional Displays

P Series The definition of digital signage, supporting the highest demands

Signage Solutions

BrightSign Bundles V Series display with Brightsign OPS digital signage media player
 NEC MediaPlayer Bundles Modular SoC MediaPlayer for intuitive plug-and-play digital signage

Video Wall Displays

UN Series Modular and flexible vast screen surfaces
 UX Series Highest reliability and redundancy for mission-critical operation

High Brightness Displays

HB Series Highest reliability and redundancy for mission-critical operation

Stretched Signage Displays

BT Series Designed to meet the demands of the most space conscious digital signage applications

E Series | Essential Displays

Enter the world of digital signage with NEC's prosumer displays. Designed to bring NEC's heritage of performance and quality to cost-conscious yet demanding customers, the E Series perfectly suits basic signage applications. Operating standalone via an integrated Media Player, signage starts automatically with the embedded auto-start function.

32" to 65"

E Series



ME Series | Midrange Displays

With commercial-grade components, professional feature-set and Sharp/NEC reliability, the low-cost ME Series means no one need be tempted to employ domestic TVs which are not fit for purpose. Primed with an integrated USB MediaPlayer, you're out-of-the-box ready for impactful content playback.

43" to 65"

ME Series

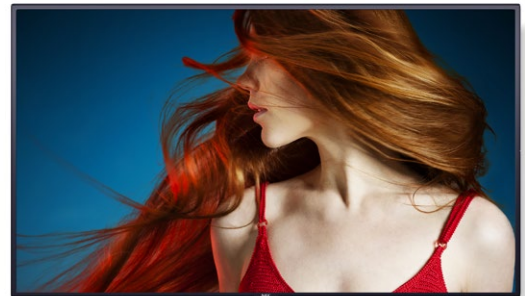


C & V Series | Midrange Displays

Present impactful advertising, entertainment and information with Sharp/NEC's reliable display solutions, achieving the lowest operational investment. The slim design with small bezel styling perfectly complements modern surroundings whilst multiple display inputs and the smart connection of computing sources, power impressive signage applications.

32" to 98"

C Series
V Series

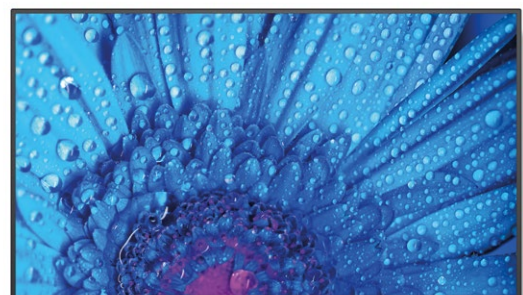


M Series | Midrange Displays

Featuring scalable computing power, the M Series is customisable to meet your needs today and tomorrow for exceptional visual experiences in the meeting room or for delivering real-time media playback in demanding signage applications. The high haze panel means no distracting reflections.

43" to 65"

M Series



MA Series | Midrange Displays

When true-to-life colour rendition is essential, the MA Series' advanced feature set delivers calibrated precision, without compromise. For specialist applications the wide colour gamut panel, SpectraView engine technology, and 8K signal processing positions the MA series at the high end of professional content delivery.

43" to 55"

MA Series



P Series | Professional Displays

Setting the standard for professional digital signage and information distribution applications, the P Series meets the highest demands for colour reproduction with operational safety and durability appropriate even for mission critical applications. The modular and scalable platform secures a futureproof investment - Digital Signage has never been so persuasive.

40" to 75"

P Series



On selected models only



BrightSign Bundles | Digital Signage Solutions

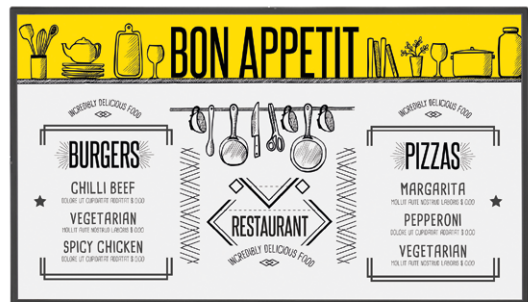
In collaboration with industry-leader BrightSign, our digital signage bundles include an OPS digital signage media player, fully integrated into the full range of NEC V Series large format displays providing 500cd/m2 brightness and anti-glare surface for a neat and seamless all-in-one solution.

40" to 98"

V Series-BS



On selected models only



NEC MediaPlayer Bundles | Digital Signage Solutions

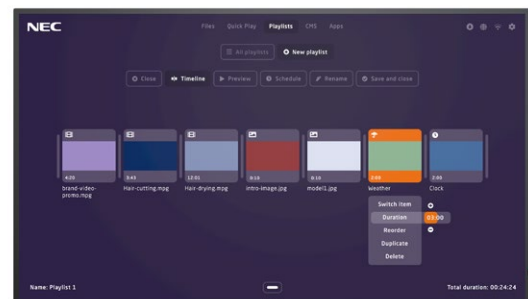
Pre-installed FOC on the NEC RaspberryPi Compute module, the NEC MediaPlayer offers a future-proof customisable solution. Seamlessly embedded into the majority of NEC's large format displays, this digital signage bundle is primed and ready for intuitive professional content playback.

40" to 65"

ME, M, MA, P Series-MPi4
V Series-MPi3



On selected models only



UN Series | Video Wall

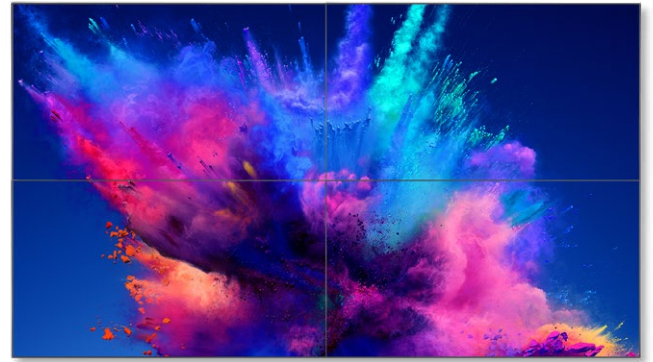
Adaptable, scalable and modular, Sharp/NEC video wall solutions offer unlimited creativity in delivering a seamless viewing experience. Responding to all high quality demands such as 24/7 operation, centralised control, colour accuracy and uniformity; the Sharp/NEC offering also includes pre-configuration and mounting solutions, content management and after sales support.

46" to 55"

UN Series



1080P
FULLHD IMAGE



UX Series | Video Wall

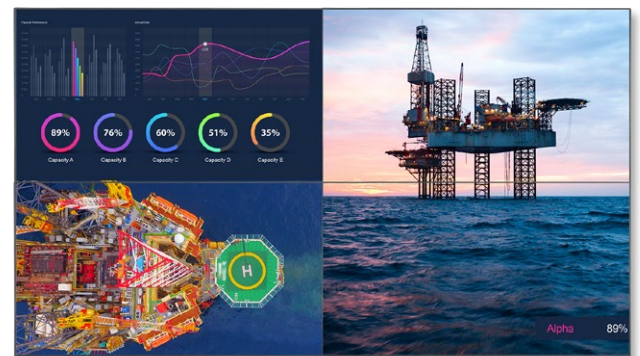
The NEC UX Series video wall displays offer scalability and an open modular design for flexible installation. Designed to provide best and highest reliability for mission-critical applications, the UX Series supports the connection of an additional power supply unit providing a high degree of redundancy, especially for control rooms where seamless 24/7 operation is essential.

55"

UX Series



1080P
FULLHD IMAGE



HB Series | High Brightness

Stunning visibility is guaranteed with NEC's High Bright displays. For any heavy duty digital signage application in store front windows or light drenched atrium spaces, the HB displays maintain high reliability and stable image quality with auto-adjust brightness levels to ensure constant readability in any lighting conditions whilst minimising power consumption.

55" to 75"

HB Series



1080P
FULLHD IMAGE



	16/7	18/7	24/7						
Performance ↑	Essential	Midrange		High End		Special		X HB SERIES HIGH BRIGHTNESS 55" - 75" Up to 2700 cd/m ²	
	E SERIES ESSENTIAL 32" - 65" 350 cd/m ²	ME SERIES MESSAGE ESSENTIAL 43" - 65" 400 cd/m ²	M SERIES MESSAGE 43" - 65" 500 cd/m ² V323-3 32" 450 cd/m ²	MA SERIES MESSAGE ADVANCED 43" - 55" 500 cd/m ²	P SERIES PROFESSIONAL 43" - 55" 700 cd/m ²	C/V/P SERIES LARGE SIZES 75", 86", 98" 350 - 700 cd/m ²	UN SERIES VIDEOWALL 46" - 55" 500 - 700 cd/m ²		BT SERIES STRETCHED 42" 700 cd/m ²
	Price →								

E Series | Essential Displays

MultiSync® Model	E328	E438	E498	E558	E658
Order Code	60005270	60005045	60005052	60005054	60005059
Panel Technology	IPS / Direct LED	IPS / Direct LED	IPS / Direct LED	IPS / Direct LED	IPS / Direct LED
Screen Size [inch / cm]	32 / 80	43 / 108	49 / 123	55 / 139	65 / 164
Brightness (max.) [cd/m ²]	350	350	350	350	350
Contrast (typ.)	1200:1	1200:1	1200:1	1200:1	1200:1
Viewing Angle horizontal / vertical [°]	178 / 178	178 / 178	178 / 178	178 / 178	178 / 178
Response Time (typ. G to G) [ms]	8	8	8	8	8
Haze Level (%)	Standard (1)	Standard (1)	Standard (1)	Standard (1)	Standard (1)
Supported orientation	Landscape	Landscape	Landscape	Landscape	Landscape
Native Resolution	1920 x 1080	3840 x 2160	3840 x 2160	3840 x 2160	3840 x 2160
Connectivity	3 HDMI, VGA	3 HDMI, VGA	3 HDMI, VGA	3 HDMI, VGA	3 HDMI, VGA
Power Consumption shipping [W]	33	72	109	105	144
Power Savings Mode [W]	<0.5	<0.5	<0.5	<0.5	<0.5
Dimensions (W x H x D) [mm]	727 x 422 x 67	970 x 560 x 71	1103 x 608 x 72	1238.6 x 718 x 72	1458 x 834 x 73
Weight [kg]	5.3	8.9	12.4	16.8	23.8
Bezel Width [mm]	12.5 (left, right, top); 13.9 (bottom)		12.5 (left, right, top); 13.9 (bottom)		13 (left, right, top); 14.4 (bottom)
Integrated Speakers	2x 5 W	2x 10 W	2x 10 W	2x 10 W	2x 10 W
NaViSet Administrator 2	•	•	•	•	•

ME Series | Midrange Displays

C Series | Midrange Displays

MultiSync® Model	ME431	ME501	ME551	ME651	C751Q	C861Q	C981Q
Order Code	60005048	60005053	60005052	60005062	60004315	60004031	60004516
Order Code with MPI4	60005372	60005373	60005052	60005375	-	-	-
Panel Technology	IPS / Direct LED	VA / Direct LED	IPS / Direct LED	IPS / Direct LED	IPS / Edge LED	IPS / Edge LED	IPS / Direct LED
Screen Size [inch / cm]	43 / 108	50 / 126	55 / 139	65 / 164	75 / 190	86 / 217	98 / 249
Brightness (max.) [cd/m ²]	400	400	400	400	350	350	350
Contrast (typ.)	≥ 8000:1	≥ 8000:1	≥ 8000:1	≥ 8000:1	1200:1	1200:1	1300:1
Viewing Angle horizontal / vertical [°]	178 / 178	178 / 178	178 / 178	178 / 178	178 / 178	178 / 178	178 / 178
Response Time (typ. G to G) [ms]	8	8	8	8	8	8	8
Haze Level (%)	Standard (1)	Standard (1)	Standard (1)	Standard (1)	Pro (28)	Pro (28)	Pro (28)
Supported orientation	Landscape, Portrait	Landscape, Portrait	Landscape, Portrait	Landscape, Portrait	Landscape, Portrait	Landscape, Portrait	Landscape, Portrait
Native Resolution	3840 x 2160	3840 x 2160	3840 x 2160	3840 x 2160	3840 x 2160	3840 x 2160	3840 x 2160
Connectivity	2 HDMI, DP	2 HDMI, DP	2 HDMI, DP	2 HDMI, DP	3 HDMI, DP: 2 In, 1 Out	3 HDMI, DP: 2 In, 1 Out	3 HDMI, DP: 2 In, 1 Out
Slot-In Option	Intel® SDM; RPi Compute Module 4			Intel® SDM; RPi Compute Module 4		OPS, Compute Module Slot	
Power Consumption shipping [W]	80	85	120	165	195	230	240
Power Savings Mode [W]	<0.5	<0.5	<0.5	<0.5	<0.5	<0.5	<0.5
Dimensions (W x H x D) [mm]	973 x 561 x 63	1128 x 649 x 63	1242 x 713 x 63	1462 x 837 x 68	1681 x 960 x 71	1928 x 1099 x 74	2194 x 1249 x 93
Weight [kg]	13.9	17.3	19.8	29.4	53.0	57.8	90
Bezel Width [mm]	13.9	14.9	13.9	14.9	14.8	15.3	15.9
Integrated Speakers	2x 10 W	2x 10 W	2x 10 W	2x 10 W	2 x 10 W	2 x 10 W	2 x 10 W
NaViSet Administrator 2	•	•	•	•	•	•	•

V Series | Midrange Displays

MultiSync® Model	V323-3	V404	V484	V754Q	V864Q	V984Q
Order Code	60004529	60004033	60004034	60004317	60004037	60004318
Order Code with MPI3	-	60005004	60005005	-	-	-
Order code with BrightSign Player	-	40001471	40001472	40001493	40001492	40001494
Panel Technology	S-IPS / Edge LED	S-PVA / Edge LED	S-PVA / Edge LED	IPS / Edge LED	IPS / Edge LED	IPS / Direct LED
Screen Size [inch / cm]	32 / 80	40 / 102	48 / 121	75 / 190	86 / 217	98 / 249
Brightness (max.) [cd/m²]	450	500	500	500	500	500
Contrast (typ.)	1300:1	4000:1	4000:1	1200:1	1200:1	1300:1
Viewing Angle Hor / Ver [°]	178 / 178	178 / 178	178 / 178	178 / 178	178 / 178	178 / 178
Response Time (typ. G to G) [ms]	8	8	8	8	8	8
Haze Level (%)	Standard (3)	Pro (25)	Pro (25)	Pro (28)	Pro (28)	Pro (28)
Supported orientation	Landscape, Portrait	Landscape, Portrait, Face Up, Face Down	Landscape, Portrait, Face Up, Face Down	Landscape, Portrait, Face Up	Landscape, Portrait, Face Up	
Native Resolution	1920 x 1080	1920 x 1080	1920 x 1080	3840 x 2160	3840 x 2160	3840 x 2160
Connectivity	HDMI, DP, DVI-D In/Out, VGA	2 HDMI, DP: 2 In, 1 Out, DVI-D, VGA	2 HDMI, DP: 2 In, 1 Out, DVI-D, VGA	3 HDMI, DP: 2 In, 1 Out	3 HDMI, DP: 2 In, 1 Out	3 HDMI, DP: 2 In, 1 Out
Slot-In Option	OPS	OPS, Compute Module Slot	OPS, Compute Module Slot	OPS, Compute Module Slot	OPS, Compute Module Slot	
Power Consumption shipping [W]	49	75	85	155	230	380
Power Savings Mode [W]	<0.5	<0.5	<0.5	<0.5	<0.5	<0.5
Dimensions (W x H x D) [mm]	750 x 444 x 60	918 x 531 x 55	1087 x 625 x 55	1681 x 960 x 71	1928 x 1099 x 74	2194 x 1249 x 93
Weight [kg]	9	14.5	17.6	53.0	57.8	90
Bezel Width [mm]	24.0	13.2	13.2	14.8	15.3	15.9
Integrated Speakers	1 x 8 W	2 x 10 W	2 x 10 W	2 x 10 W	2 x 10 W	2 x 10 W
NaViSet Administrator 2	•	•	•	•	•	•
SpectraView Engine	-	•	•	•	•	•

M Series | Midrange Displays

MA Series | Midrange Displays

MultiSync® Model	M431	M491	M551	M651	MA431	MA491	MA551
Order Code	60005047	60005051	60005055	60005061	60005046	60005050	60005056
Order Code with MPI4	60005380	60005381	60005382	60005383	60005384	60005370	60005371
Panel Technology	IPS / Direct LED	IPS / Direct LED	IPS / Direct LED	IPS / Direct LED	IPS / Direct LED	IPS / Direct LED	IPS / Direct LED
Screen Size [inch / cm]	43 / 108	49 / 123	55 / 139	65 / 164	43 / 108	49 / 124	55 / 139
Brightness (max.) [cd/m²]	500	500	500	500	500	500	500
Contrast (typ.)	≥ 8000:1	≥ 8000:1	≥ 8000:1	≥ 8000:1	≥ 8000:1	≥ 8000:1	≥ 8000:1
Viewing Angle Hor / Ver [°]	178 / 178	178 / 178	178 / 178	178 / 178	178 / 178	178 / 178	178 / 178
Response Time (typ. G to G) [ms]	8	8	8	8	8	8	8
Haze Level (%)	Pro (28)	Pro (28)	Pro (28)	Pro (28)	Pro (28)	Pro (28)	Pro (28)
Supported orientation	Landscape, Portrait	Landscape, Portrait	Landscape, Portrait	Landscape, Portrait	Landscape, Portrait, Face up		
Native Resolution	3840 x 2160	3840 x 2160	3840 x 2160	3840 x 2160	3840 x 2160	3840 x 2160	3840 x 2160
Connectivity	2 HDMI, DP	2 HDMI, DP	2 HDMI, DP	2 HDMI, DP	HDMI: 2 In, 1 Out; DP: 2 In, 1 Out		
Slot-In Option	Intel® SDM; RPi Compute Module 4				Intel® SDM; RPi Compute Module 4		
Power Consumption shipping [W]	80	80	110	120	70	85	90
Power Savings Mode [W]	<0.5	<0.5	<0.5	<0.5	<0.5	<0.5	<0.5
Dimensions (W x H x D) [mm]	968 x 561 x 67	1103 x 636 x 61	1240 x 713 x 61	1458 x 836 x 63	968 x 561 x 67	1103 x 636 x 61	1240 x 713 x 61
Weight [kg]	17.8	21.8	26.4	37.1	18.5	22.9	27.6
Bezel Width [mm]	11 (left, right, top); 15.6 (bottom)	12 (top); 12.5 (left, right); 15.6 (bottom)	12 (top); 12.5 (left, right); 15.6 (bottom)	12 (top); 12.5 (left, right); 15.6 (bottom)	11 (left, right, top); 15.6 (bottom)	12 (top); 12.5 (left, right); 15.6 (bottom)	12 (top); 12.5 (left, right); 15.6 (bottom)
Integrated Speakers	2 x 10 W	2 x 10 W	2 x 10 W	2 x 10 W	-	-	-
NaViSet Administrator 2	•	•	•	•	•	•	•
SpectraView Engine	-	-	-	-	•	•	•

MultiSync® Model	P435	P495	P555	P754Q	X554HB	X754HB	BT421
Order Code	60005141	60005049	60005058	60004316	60003912	60003913	60004365
Order Code with MPI4	60005376	60005377	60005378	-	-	-	-
Panel Technology	IPS / Edge LED	IPS / Edge LED	IPS / Edge LED	IPS / Edge LED	S-PVA / Direct LED	S-PVA / Direct LED	VA / Direct LED
Screen Size [inch / cm]	43 / 108	49 / 125	55 / 139	75 / 190	55 / 140	75 / 191	42 / 107
Brightness (max.) [cd/m ²]	700	700	700	650	2700	2500	700
Contrast (typ.)	≥ 8000:1	≥ 8000:1	≥ 8000:1	1200:1	5000:1	5000:1	4000:1
Viewing Angle Hor / Ver [°]	178 / 178	178 / 178	178 / 178	178 / 178	178 / 178	178 / 178	178 / 178
Response Time (typ. G to G) [ms]	8	8	8	8	6	6	8
Haze Level (%)	Pro (28)	Pro (28)	Pro (28)	Pro (28)	Standard (1)	Standard (1)	Pro (44)
Supported Orientation	Landscape, Portrait, Face Up, Face Down			Landscape, Portrait, Face Up	Landscape, Portrait		Landscape, Portrait
Native Resolution	3840 x 2160	3840 x 2160	3840 x 2160	3840 x 2160	1920 x 1080	1920 x 1080	1920 x 480
Connectivity	HDMI: 2 In, 1 Out; DP 2 In, 1 Out			3 HDMI, DP: 2 In, 1 Out	DP In/Out, HDMI, DVI-D, VGA		DVI: 2 In, 1 Out, LAN
Slot-In Option	Intel® SDM; RPi Compute Module 4			OPS, Compute Module Slot	OPS, Interface Extension Slot		-
Power Consumption shipping [W]	90	105	110	195	310	540	50
Power Savings Mode [W]	<0.5	<0.5	<0.5	<0.5	<0.5	<0.5	< 0.5
Dimensions (W x H x D) [mm]	968 x 561 x 67	1103 x 636 x 61	1240 x 713 x 61	1681 x 960 x 71	1253 x 724 x 137	1694 x 972 x 146	1060 x 289 x 65
Weight [kg]	18.5	22.9	27.6	53.0	32.6	58	9.3
Bezel Width [mm]**	11 (left, right, top); 15.6 (bottom)	12 (top); 12.5 (left, right); 15.6 (bottom)	12 (top); 12.5 (left, right); 15.6 (bottom)	14.8	19.5	19.5	7.9 L+R / 9.8 T / 14.7 B
Integrated Speakers	-	-	-	2 x 10 W	2 x 10 W	2 x 10 W	-
NaViSet Administrator 2	•	•	•	•	•	•	•
SpectraView Engine	•	•	•	•	-	-	-

UN | UX Series | Video Wall

MultiSync® Model	UN462A	UN462VA	UN552A	UN552	UN552V	UN552S	UN552VS	UX552
Order Code	60004517	60004518	60004525	60004884	60004882	60004523	60004524	60004526
Panel Technology	VA / Direct LED	VA / Direct LED	VA / Direct LED	IPS / Direct LED	IPS / Direct LED	IPS / Direct LED	IPS / Direct LED	VA / Direct LED
Screen Size [inch / cm]	46 / 117	46 / 117	55 / 140	55 / 140	55 / 140	55 / 140	55 / 140	55 / 140
Brightness (Max.) [cd/m ²]	700	500	700	700	500	700	500	700
Contrast (typ.)	3500:1	3500:1	4000:1	1200:1	1200:1	1100:1	1100:1	4000:1
Viewing Angle Hor / Vert [°]	178 / 178	178 / 178	178 / 178	178 / 178	178 / 178	178 / 178	178 / 178	178 / 178
Response Time (typ. G to G) [ms]	8	8	8	8	8	8	8	8
Haze Level (%)	Pro (25)	Pro (25)	Pro (28)	Pro (28)	Pro (28)	Pro (28)	Pro (28)	Pro (25)
Supported Orientation	Landscape, Portrait		Landscape, Portrait		Landscape, Portrait		Landscape, Portrait	
Native Resolution	1920 x 1080	1920 x 1080	1920 x 1080	1920 x 1080	1920 x 1080	1920 x 1080	1920 x 1080	1920 x 1080
Connectivity	DP In/Out, HDMI In/Out, DVI-D, VGA				DP In/Out, HDMI In/Out, DVI-D, VGA			
Slot-In Option	OPS, Compute Module Slot				OPS, Compute Module Slot			
Power Consumption shipping [W]	125	90	195	150	110	165	160	195
Power Savings Mode [W]	<0.5	<0.5	<0.5	<0.5	<0.5	<0.5	<0.5	<0.5
Dimensions (W x H x D) [mm]	1022 x 577 x 101	1022 x 576 x 101	1214 x 684 x 100	1213 x 684 x 104	1213 x 684 x 104	1211 x 682 x 99	1211 x 682 x 99	1214 x 684 x 100
Weight [kg]	21.8	21.8	28.5	25.5	25.5	25.8	25.8	29.3
Bezel Width T - L / B - R [mm]*	2.3 / 1.2	2.3 / 1.2	2.3 / 1.2	2.3 / 1.2	2.3 / 1.2	0.44 / 0.44	0.44 / 0.44	2.3 / 1.2
NaViSet Administrator 2	•	•	•	•	•	•	•	•
SpectraView Engine	•	•	•	•	•	•	•	•
NEC Display Wall Calibrator	•	•	•	•	•	•	•	•

Protective & Mirror Glass | Colour Options



32" to 98"

Protective Glass

43" to 55"

Mirror Glass

32" to 98"

Colour Options



Protective Glass Displays

Ensuring operational safety even under the toughest conditions, NEC Protective Glass screens deliver superb readability and image clarity whilst protecting your investment. An upgrade path available on many NEC display series, Protective Glass is advisable for signage applications in public spaces protecting against vandalism and accidental damage.

Mirror Glass Displays

Generating a captivating interplay between a real mirror and a signage screen, this exciting two-in-one display enhances the customer experience. By blending the benefits of a digital signage display with the visual clarity of a fitting room mirror, the Mirror Glass Display appeals to retailers seeking to engage their customers whilst affecting sales uplift.

Customisable Bezel Colour

Colour match the display frame to complement your interior aesthetic. To draw attention or to conceal, or to reflect your corporate identify; choose any colour from the RAL chart. Using professional spray-painting techniques, your display is ready to install out of the box, with all the NEC quality you expect.

Available for V, M, MA and P Series.



Protective Glass Displays

MultiSync® Model	ME431 PG	ME551 PG	ME651 PG	V323-3 PG	V404 PG	V484 PG
Order Code	60005100	60005107	60005111	60004993	60004337	60004338
Base Model	ME431	ME551	ME651	V323-2	V404	V484
All specs same as base model except for those listed below						
Dimensions (W x H x D) [mm]	973 x 561.2 x 62.6	1241.8 x 712.6 x 62.6	1462.3 x 837.3 x 68.1	750 x 445 x 67	925 x 538 x 63	1094 x 632 x 63
Weight [kg]	13.9	19.8	29.4	12.2	21	26
Bezel Width T-B / L-R [mm]	13.9	13.9	14.9	24.0 / 24.0	16.7 / 16.9	16.7 / 16.9
Glass Type	Conturan® glass by Schott					
Glass Thickness [mm]	4	4	4	4	4	4
Coating	Security Glass with anti-reflexion coating					
Light Transmission [%]	97	97	97	97	97	97
Reflection Rate [%]	<1	<1	<1	<1	<1	<1

Protective Glass Displays

MultiSync® Model	V754Q PG	V864Q PG	V984Q PG	M431 PG	M491 PG	M551 PG
Order Code	60004584	60004585	60004780	60005099	60005103	60005251
Base Model	V754Q	V864Q	V984Q	M431	M491	M551
All specs same as base model except for those listed below						
Dimensions (W x H x D) [mm]	1694 x 972 x 93	1940 x 1111 x 86	2205 x 1259 x 104	968.2 x 561 x 67.1	1103.4 x 636.2 x 61.1	1239.6 x 713 x 61.1
Weight [kg]	73	89.4	130	17.8	21.8	26.4
Bezel Width T-B / L-R [mm]	15.8 / 15.8	16.3 / 16.3	17.15 / 17.15	11 (left, right and top); 15.6 (bottom)	12 (top); 12.5 (left and right); 15.6 (bottom)	12 (top); 12.5 (left and right); 15.6 (bottom)
Glass Type	Conturan® glass by Schott					
Glass Thickness [mm]	5	6	6	4	4	4
Coating	Security Glass with anti-reflexion coating					
Light Transmission [%]	96	96	96	97	97	97
Reflection Rate [%]	<1	<1	<1	<1	<1	<1

Protective Glass Displays

MultiSync® Model	M651 PG	MA431 PG	MA491 PG	MA551 PG	P435 PG	P495 PG
Order Code	60005110	60005098	60005102	60005106	60005421	60005101
Base Model	M651	MA431	MA491	MA551	P435	P495
All specs same as base model except for those listed below						
Dimensions (W x H x D) [mm]	1458.4 x 836.2 x 62.6	968.2 x 561 x 67.1	1103.4 x 636.2 x 61.1	1239.6 x 713 x 61.1	968.2 x 561 x 67.1	1103.4 x 636.2 x 61.1
Weight [kg]	37.1	18.5	22.9	27.6	18.5	22.9
Bezel Width T-B / L-R [mm]	12 (top); 12.5 (left and right); 15.6 (bottom)	11 (left, right and top); 15.6 (bottom)	12 (top); 12.5 (left and right); 15.6 (bottom)	12 (top); 12.5 (left and right); 15.6 (bottom)	11 (left, right and top); 15.6 (bottom)	12 (top and bottom); 12.5 (left and right); 15.6 (bottom)
Glass Type	Conturan® glass by Schott					
Glass Thickness [mm]	5	4	4	4	4	4
Coating	Security Glass with anti-reflexion coating					
Light Transmission [%]	97	97	97	97	97	97
Reflection Rate [%]	<1	<1	<1	<1	<1	<1

Protective Glass Displays

Mirror Glass Displays

MultiSync® Model	P555 PG	P754Q PG	P435 MG	P495 MG	P555 MG
Order Code	60005108	60004582	TBD	TBD	60005449
Base Model	P555	P754Q	P435	P495	P555
All specs same as base model except for those listed below					
Dimensions (W x H x D) [mm]	1239.6 x 713 x 61.1	1694 x 972 x 93	968.2 x 561 x 67.1	1103.4 x 636.2 x 61.1	1239.6 x 713 x 61.1
Weight [kg]	27.6	73	18.5	22.9	27.6
Bezel Width T-B / L-R [mm]	12 (top); 12.5 (left and right); 15.6 (bottom)	15.8 / 15.8	11 (left, right and top); 15.6 (bottom)	12 (top and bottom); 12.5 (left and right); 15.6 (bottom)	12 (top); 12.5 (left and right); 15.6 (bottom)
Glass Type	Conturan® glass by Schott		Semi-transparent mirrored glass Mirona® by Schott		
Glass Thickness [mm]	4	5	4	4	4
Coating	Security Glass with anti-reflexion coating		Float glass coated on both sides with high reflective coating		
Light Transmission [%]	97	96	97	97	97
Reflection Rate [%]	<1	<1	-	-	-

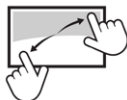
Interactive Displays



Intuitive touch engagement attracts and stimulates for a pleasing and more satisfying user experience. Collaboration in meeting rooms, interactive video walls and signage, wayfinding and POS/POI - Sharp/NEC's comprehensive range of interactive large format displays offer the technology appropriate for varied applications ensuring the best fit touch solution for your needs.

3
YEARS
WARRANTY

UP TO
5
YEARS
OPTIONAL
WARRANTY



Infrared Touch Displays

ME Series IR Reliable touch performance for budget-driven usage

PCAP Touch Displays

M Series PCAP Superior touch performance for demanding environments

ShadowSense™ Touch Displays

C Series SST Price performance champion for interactive presentation and whiteboarding

InGlass™ Touch Displays

V Series IGB Natural writing experience including native Windows Ink support

Entry Collaboration Displays

CB Series Collaboration display for interactive whiteboarding and screen sharing

Windows Collaboration Displays

WD Series BYOM collaboration display with built-in camera, speaker and microphone

All-in-one Collaboration Solution

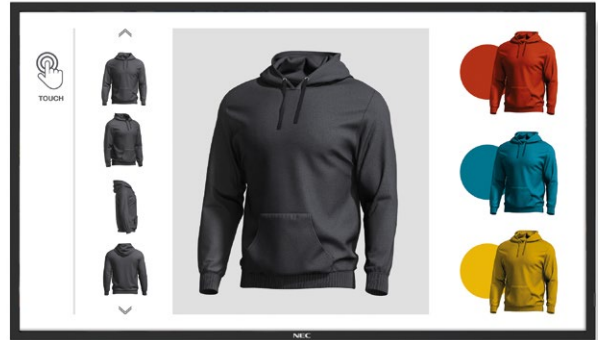
InfinityBoard Series Best-in-class collaboration solution featuring Huddly IQ camera

ME Series IR | Infrared Touch Displays

Offering a professional feature set and Sharp/NEC reliability, yet at a very attractive price point, the ME series with infrared touch delivers a satisfying user experience with a fast and precise touch response. Lower budget business operators benefit from upgradable interactive digital signage without requiring specialist expertise.

43" to 55"

ME Series IR

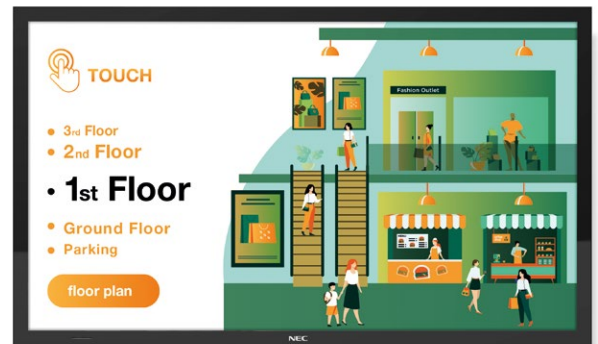


M Series PCAP | PCAP Touch Displays

Great first impressions can make all the difference; presenting your business in the best possible way will boost your brand. With a modern, bezel-free styling, 24/7 operation and reduced reflections when ambient light is high, the M series PCAP touch engages audiences and facilitates collaboration.

43" to 65"

M Series PCAP

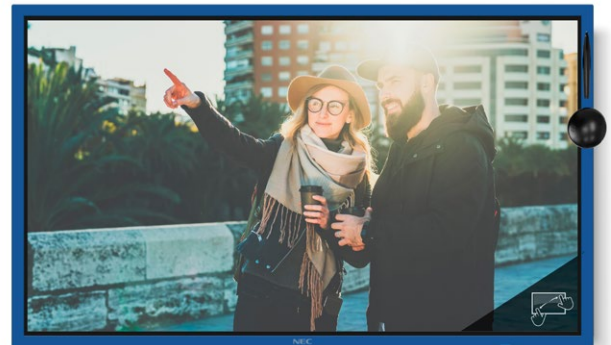


C Series SST | ShadowSense™ Touch Displays

Bringing intuitive interactivity to the meeting room, even in direct sunlight the high performance touch functions perfectly without ghost touches. Benefit from Windows Ink supported in MS Office applications. Customise the colour of the bezel in any RAL colour to perfectly fit your interior design.

75" to 98"

C Series SST

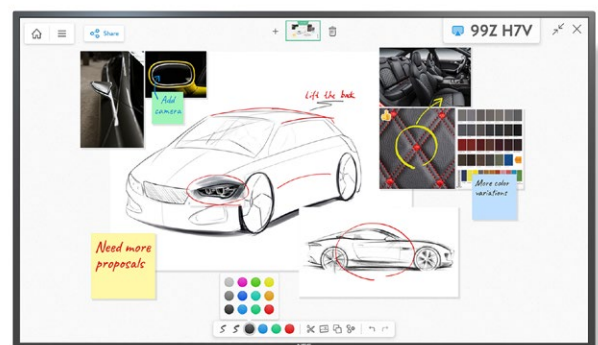


V Series IGB | InGlass™ Touch Displays

The InGlass™ touch displays with responsive passive pen bring superior paper-like writing with minimal latency. High brightness levels ensure excellent readability and image reproduction even in today's typically bright meeting spaces where maintaining a motivational environment is paramount.

75" & 86"

V Series IGB



CB Series | Entry Collaboration Displays

Featuring embedded computing, business and educational sessions start-up instantly with whiteboard and wireless screen sharing functionality. Annotate over any content shown on the screen. Simple operation with easy front access to USB ports and 'always on top' on-screen controls for major functionalities.

65" to 86"

CB Series



WD Series | Windows Collaboration Displays

For frictionless meeting experiences, with instant access whether in-room or remote, NEC's WD551 is an all-in-one smart solution for modern meeting spaces. Users simply connect their own device via the secure USB-C cable to immediately share content and start video meetings using already familiar tools.

55"

WD Series

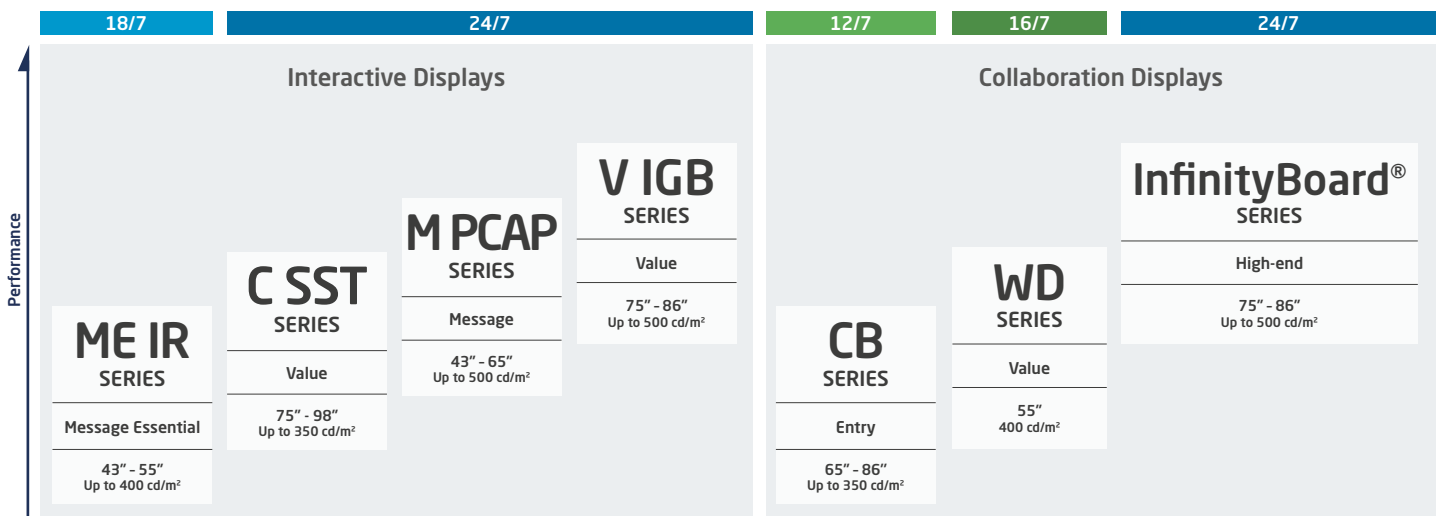


InfinityBoard® Series | All-in-One Collaboration Solution

Combining ultra-high definition InGlass™ touch display, Corei7 OPS PC, Huddly IQ camera, side-mounted speakers and software tools in one device. Open for any platform and software integration, the InfinityBoard supports video conferencing, creative brainstorming, presenting, reviewing and collaboration to boost group work efficiency.

75" to 86"

InfinityBoard Series



Price →

MultiSync® Model	ME431 IR	ME501 IR	ME551 IR	C751Q SST	C861Q SST	C981Q SST
Order Code	60005077	60005081	60005084	60004575	60004576	60004577
Base Model	ME431	ME501	ME551	C751Q	C861Q	C981Q
All specs same as base model except for those listed below						
Brightness (max.) [cd/m ²]	400	400	400	350	350	350
Haze Level (%)	4	4	4	Pro (28)	Pro (28)	Pro (28)
Supported Orientation	Landscape, Portrait			Face Up, Landscape, Portrait		
Slot-in Option	Intel SDM; RPi Compute Module 4			Intel SDM; RPi Compute Module 4		
Power Consumption [W]	80	85	120	207	242	252
Dimensions (W x H x D) [mm]	988 x 574 x 86	1143 x 662 x 80	1257 x 725 x 80	1746 x 1025 x 88	2001 x 1170 x 92	2257 x 1310 x 111
Weight [kg]	21.9	27.8	31.8	77.5	90	135
Bezel Width T-B / L-R [mm]	23.4 / 22.25	20 / 18.95	23.9 / 22.75	33 / 35.2	34.1 / 35.5	35 / 35
Touch Technology	Infrared Touch	Infrared Touch	Infrared Touch	ShadowSense™	ShadowSense™	ShadowSense™
Touch Points	20	20	20	10	10	12
Input Method	Finger, Stylus, Glove	Finger, Stylus, Glove	Finger, Stylus, Glove	Finger, Stylus, Glove	Finger, Stylus, Glove	Finger, Stylus, Glove
Glass Thickness [mm]	3	3	3	5	5	5
Coating	Anti-glare coating	Anti-glare coating	Anti-glare coating	Anti-glare coating	Anti-glare coating	Anti-glare coating
Light Transmission [%]	92	92	92	92	92	92
Shipping Content	UHD Touch Display			UHD Touch Display, SST Pen & Eraser Kit		
NaViSet Administrator 2	●	●	●	●	●	●
SpectraView Engine	-	-	-	●	●	●

M Series PCAP | PCAP Touch Displays

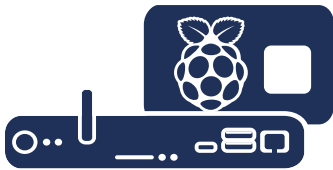
MultiSync® Model	M431 PCAP	M491 PCAP	M551 PCAP	M651 PCAP
Order Code	60005076	60005080	60005082	60005341
Base Model	M431	M491	M551	M651
All specs same as base model except for those listed below				
Brightness (max.) [cd/m ²]	500	500	500	500
Haze Level (%)	5 ~ 10	5 ~ 10	5 ~ 10	5 ~ 10
Supported Orientation	Face Up, Landscape, Portrait		Face Up, Landscape, Portrait	
Slot-in Option	Intel® SDM; RPi Compute Module 4		Intel® SDM; RPi Compute Module 4	
Power Consumption [W]	80	80	110	120
Dimensions (W x H x D) [mm]	1003 x 595 x 74	1140 x 670 x 65	1276 x 747 x 68	1493 x 871 x 69
Weight [kg]	24.8	30.3	36.4	51.1
Bezel Width T-B / L-R [mm]	Edge-to-edge flush design (no bezel)		Edge-to-edge flush design (no bezel)	
Touch Technology	PCAP	PCAP	PCAP	PCAP
Touch Points	20	20	20	20
Input Method	Conductive Passive Stylus, Finger, Thin Gloves		Conductive Passive Stylus, Finger, Thin Gloves	
Glass Thickness [mm]	3.6	4.45	3.5	3.5
Coating	Anti-glare coating	Anti-glare coating	Anti-glare coating	Anti-glare coating
Light Transmission [%]	85	85	85	85
Shipping Content	UHD Touch Display	UHD Touch Display	UHD Touch Display	UHD Touch Display
NaViSet Administrator 2	●	●	●	●
SpectraView Engine	-	-	-	-

MultiSync® Model	V754Q IGB	V864Q IGB	CB651Q-2	CB751Q	CB861Q
Order Code	60004679	60004680	60005410	60004824	60004825
Panel Technology	IPS	IPS	IPS	IPS	IPS
Screen Size [inch / cm]	75 / 189	86 / 217	65 / 164	75 / 189	86 / 217
Brightness (max.) [cd/m²]	500 (shipped at 350)	500 (shipped at 350)	350	350	350
Contrast (typ.)	1200:1	1200:1	1200:1	1200:1	1200:1
Viewing Angle Hor / Ver [°]	178 / 178 (at contrast ratio > 10:1)		178 / 178	178 / 178	178 / 178
Response Time (typ. G to G) [ms]	8 (grey-to-grey)	8 (grey-to-grey)	8	8	8
Haze Level (%)	Pro (28)	Pro (28)	3	3	3
Supported Orientation	Face Up, Landscape, Portrait	Face Up, Landscape, Portrait	Landscape		
Native Resolution	3840 x 2160	3840 x 2160	3840 x 2160	3840 x 2160	3840 x 2160
Connectivity	3 HDMI, DP:2 In, 1 Out		3 HDMI, 1x VGA		
Embedded Computing	Android based compute with built-in annotation tools & wireless presentation capabilities				
Slot-in Option	OPS, Compute Module Slot		OPS		
Power Consumption [W]	167	242	165	205	365
Power Savings Mode [W]	<0.5	<0.5	0.5	0.5	0.5
Dimensions (W x H x D) [mm]	1725 x 1003 x 81	1972 x 1142 x 85	1488 x 897 x 85	1709 x 1020 x 86	1957 x 1160 x 86
Weight [kg]	73	84	39.2	52.6	67.3
Bezel Width T-L-R / B [mm]	18.8	19.8 T B / 20.3 L R	17.7 / 45.7	17.7 / 45.7	17.7 / 45.7
Touch Technology / Touch Points	InGlass™ Touch / Real multi-touch up to 20 touches		Infrared / 20		
Input Method	Finger, Gloves, Stylus (≥ 2 mm)		Finger, Stylus, Glove		
Glass Thickness [mm]	3	3	4		
Coating	Anti-glare coating	Anti-glare coating	Anti-glare coating		
Light Transmission [%]	88 (+/- 1 %)	88 (+/- 1 %)	88		
Integrated Speakers	2 x 10 W	2 x 10 W	2 x 12 W	2 x 12 W	2 x 12 W
Included Software	FlatFrog Board (NEC Pro Bundle)		Mosaic Canvas, Mosaic Connect		
Shipping Content	UHD Touch Display, 2x Passive Pens		UHD Touch Display, 3x Passive Pens, Wall Mount		
NaviSet Administrator 2	●	●	●	●	●
SpectraView Engine	●	●	-	-	-

MultiSync® Model	WD551
Order Code	60005140
Panel Technology	IPS
Screen Size [inch/cm]	55 / 139
Brightness [cd/m²]	400, (shipped at 350)
Contrast Ratio (default)	1200:1
Viewing Angle Hor / Vert [°]	178 / 178
Response Time (typ.) [ms]	8
Haze Level [%]	4-10
Supported Orientation	Landscape
Native Resolution	3840 x 2160
Connectivity	1x HDMI; 2x USB-C; 1x USB 2.0 (Type-A); 2x USB 3.0 (Type-A); 1 USB 3.0 (Type-B)
Power Consumption [W]	371 (shipped at 155 Eco)
Power Savings Mode [W]	<0.5
Dimensions (W x H x D) [mm]	1,266 x 857 x 85
Weight [kg]	31.2
Bezel Width [mm]	Edge-to-edge flush design (no bezel)
Touch Technology	PCAP
Touch Points	10
Input Method	Active Stylus; Conductive Passive Stylus (≥ 8 mm); Finger
Thickness [mm]	3
Coating	Anti-glare coating
Light Transmission [%]	≥ 88
Video Conference Camera	HD 3840p 30fps; 120° viewing angle
Integrated Speakers	12 W + 12 W; (built-in Subwoofer: 15 W)
Microphone	Built-in 6 array; 180°
Shipping Content	1.8 m USB-C Cable; 2x Active Stylus; Display; Pen Charger; Remote Control;
Special Characteristics	Microsoft Teams Certified

MultiSync® Model	75" InfinityBoard 2.1 / 2.1QL	86" InfinityBoard 2.1 / 2.1QL
Order Code	40001303 / 40001444	40001305 / 40001445
Base Model	V754Q	V864Q
All specs same as base model except for those listed below		
Brightness (max.) [cd/m²]	500	500
Haze Level (%)	Pro (28)	Pro (28)
Supported Orientation	Landscape, Portrait, Face-up	
Slot-in Option	OPS, Compute Module Slot	
Power Consumption [W]	167	242
Dimensions (W x H x D) [mm]	1945 x 1003 x 86	2192 x 1142 x 86
Weight [kg]	80.3	91.7
Bezel Width T-B / L-R [mm]	18.8 / 18.8	19.8 / 20.3
Touch Technology	InGlass™	
Touch Points	20	20
Input Method	Finger, Stylus (≥ 2 mm), Glove	
Glass Thickness [mm]	3	3
Coating	Premium toughened glass, anti-glare coating	
Light Transmission [%]	88	88
Video Conference Camera	Huddly IQ camera, 150° viewing angle, 1080p 30fps, auto framing	
Conference Speaker	40 W, 70 Hz to 15 kHz, 82.1 dB	
Microphone	No microphone included	
OPS Slot-in PC	7th gen. Intel® Core i7 -7820EQ 4 x 3.0GHz, 8GB RAM, 128GB SDD, Windows 10 Pro, Wi-Fi, TPM	
Included Software	2.1 models: Windows 10 Professional, FlatFrog Board (NEC Pro Bundle), Mosaic Connect, Hoyalu (single-user license), Huddly Camera App 2.1 QL models: Windows 10 Professional, QuickLaunch Ultimate Edition, FlatFrog Board (NEC Pro Bundle), Mosaic Connect, Hoyalu (single-user license), Huddly Camera App	
Shipping Content	UHD Touch Display, OPS Slot-in PC, Side-mounted Speaker, Huddly IQ, 2x Passive Pen	
NaviSet Administrator 2	●	●
SpectraView Engine	●	●

OMi - Open Modular Intelligence



NEC's Open Modular Intelligence (OMi) platform provides a smart and seamless connection between source and display to deliver powerful, tailored and future proof digital signage and presentations. Simplifying device installation, usage, maintenance and upgrade, the integrated slot-in options feature a customizable selection of computing power and signal distribution.

Intel® Smart Display Module (Intel®SDM)

A natural evolution from the previously used OPS (Open Pluggable Specification) interface, Sharp/NEC has adopted the new, fully future-proof Intel® Smart Display Module. Delivering the same level of intelligence and interoperability, but in a smaller form factor and with no housing, the small and large size Intel®SDM modules seamlessly integrate into the latest generation of NEC Large Format Displays. Supporting higher resolutions and higher bandwidth, the Intel®SDM architecture supports even greater performance levels and superb reality-like content playback.

Slot-in Computing Solutions

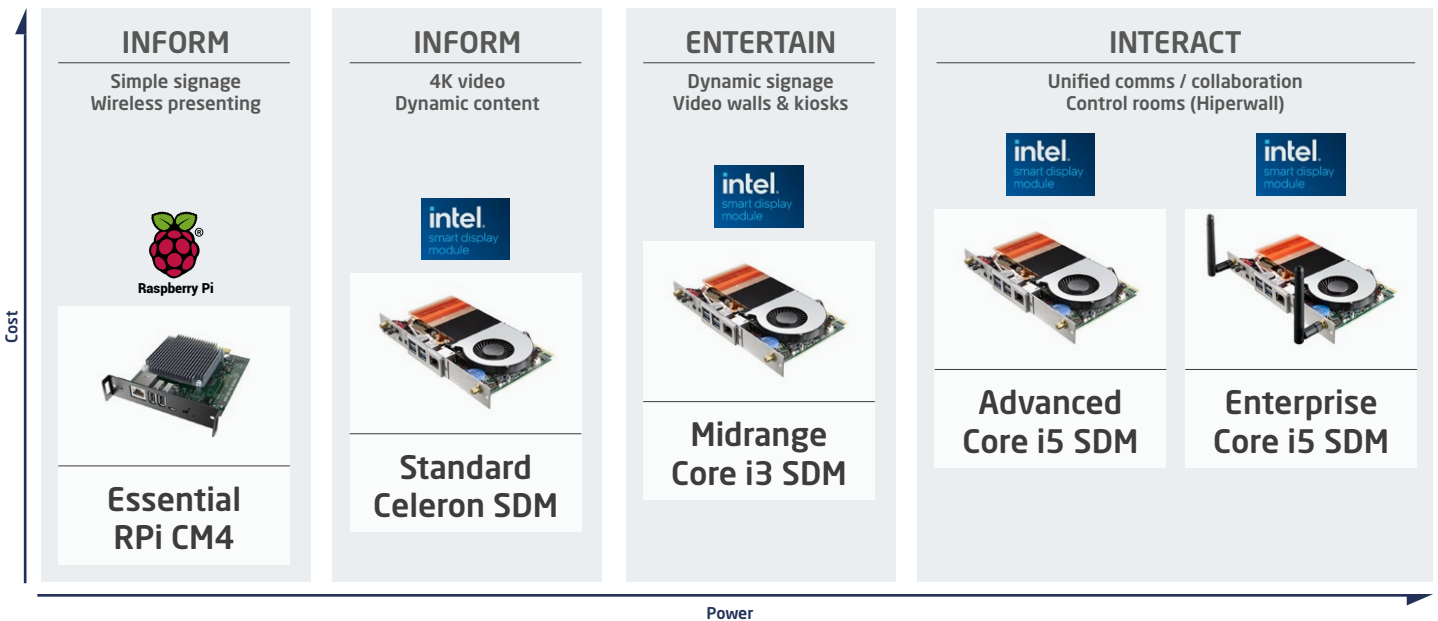
Upgrade the power of your displays at any time with a wide selection of slot-in computing solutions. Pre-installed on the Raspberry Pi Compute Module 4, with the modular MPI4 NEC MediaPlayer Kit, it has never been easier to create intuitive signage content straight out of the box. For more demanding applications, select your perfect match CPU performance level from our range of Intel®SDM computing devices.

Fully embedded media players make digital signage simpler and more flexible without the need for additional cables or devices, whilst external players limit use to just one source for all displays on a network.

Slot-in Interfaces


Open modular slot-in options from Sharp/NEC offer an interchangeable selection of solutions including computing technology, media playback and signal distribution (eg AVoverIP) for unlimited versatility. Application usage can be extended through the integration of connectivity standards such as HDBaseT or SDI, widening the performance level of the display. The embedded solution enables the displays to be enhanced to a custom-made solution which matches the specific demands of any application. Should future demands change, the integrated module can be upgraded or re-configured accordingly without having to replace the display.


Typical Processor requirements for differing performance levels.





Slot-In Options | Compatibility


Sharp NEC Display Solutions offers the following certified compute options:

- 

The **MPI4 NEC MediaPlayer Kit** offers a cost-effective solution for signage displays in retail environments, passenger information and quick service menu boards, with access to one of our many CMS partners for more complex playlists.
- 

The **Standard Intel®SDM Slot-in PC** offers a low-cost solution for digital signage in retail or corporate applications, passenger information and menu boards.
- 

The **Midrange Intel®SDM slot-in PC** Core i3 delivers crisp 4K UHD playback for flight and passenger information, retail and corporate signage as well as interactive and kiosk applications.
- 

The **Advanced Intel®SDM slot-in PC** Core i5 supports the most demanding high resolution or resource hungry interactive signage applications, video walls and more complex intelligent signage installations.
- 

The **Enterprise Intel®SDM Slot-in PC** Core i5 meets all requirements for demanding corporate meeting room applications such as video conferencing, interactive whiteboards and collaborative use cases.

Slot-in Options | Compatibility

Model	RPi CM3 SoC	RPi CM4 SoC (MPI4 NEC MediaPlayer Kit)	OPS Computing Modules (Intel Core CPU configurations)	OPS Interface Boards (HDBaseT, 3G SDI)	SDM Computing Modules	SDM Interface Boards (HDBT, 12G SDI)
Large Format Displays						
ME431	-	●	-	-	●*	●
ME501	-	●	-	-	●	●
ME551	-	●	-	-	●	●
ME651	-	●	-	-	●	●
C751Q	●	-	●	-	-	-
C861Q	●	-	●	-	-	-
C981Q	●	-	●	-	-	-
V323-3	-	-	●	-	-	-
V404	●	-	●	●	-	-
V484	●	-	●	●	-	-
V754Q	●	-	●	●	-	-
V864Q	●	-	●	●	-	-
V984Q	●	-	●	●	-	-
M431	-	●	-	-	●*	●
M491	-	●	-	-	●	●
M551	-	●	-	-	●	●
M651	-	●	-	-	●	●
MA431	-	●	-	-	●	●
MA491	-	●	-	-	●	●
MA551	-	●	-	-	●	●
P404	●	-	●	-	-	-
P435	-	●	-	-	●	●
P484	●	-	●	-	-	-
P495	-	●	-	-	●	●
P555	-	●	-	-	●	●
X554HB	-	-	●	-	-	-
X754HB	-	-	●	-	-	-
UN462A	●	-	●	●	-	-
UN462VA	●	-	●	●	-	-
UN552	●	-	●	●	-	-
UN552A	●	-	●	●	-	-
UN552S	●	-	●	●	-	-
Projectors						
PX803UL	-	-	●	●	-	-
PX1004UL	-	-	●	●	-	-
PX1005QL	-	-	●	●	-	-
PH3501QL	-	-	●	●	-	-

* supporting SDM modules up to 44W i.e. Standard Celeron and below configurations.

Display Model	Built-in speakers	External Speaker Order Code	Soundbars						High-End-Speakers				
			General			Collaborative			side-mount		rear-mount		
			100013520	100015582	100015583	100015453	100015078	100015454	100015302	100014632	100015001	100014985	100015517
E328	✓	SP-1F1	-	●	-	●	-	●	-	●	-	●	-
E438	✓	SP-AS2	-	●	-	●	-	●	-	●	-	●	-
E498	✓	SP-PS2	-	●	-	●	-	●	-	●	-	●	-
E558	✓	SP-ASCM2	-	●	-	●	-	●	-	●	-	●	-
E658	✓	SP-PSCM	-	●	-	●	-	●	-	●	-	●	-
ME431 (PG, IR)	✓	SP-ASCM-IQ2	-	●	-	●	-	●	-	●	-	●	●
ME501 (IR)	✓	SP-PSCM-IQ	-	●	-	●	-	●	-	●	-	●	●
ME551 (PG, IR)	✓	SP-484SM	-	●	-	●	-	●	-	●	-	●	●
ME651 (PG)	✓	SP-754QSM	-	●	-	●	-	●	-	●	-	●	●
C751Q (SST)*	✓	SP-864QSM	●	-	●	-	●	-	●	-	●	-	●
C861Q (SST)*	✓	SP-RM3	●	-	●	-	●	-	●	-	●	-	●
C981Q (SST)*	✓	SP-RM3a	●	-	●	-	●	-	●	-	●	-	●
V323-3 (PG)*	✓		-	-	●	-	●	-	●	-	●	-	●
V404 (PG)*	✓		●	-	●	-	●	-	●	-	●	-	●
V484 (PG)*	✓		●	-	●	-	●	-	●	-	●	-	●
V754Q (PG)*	✓		●	-	●	-	●	-	●	-	●	-	●
V864Q (PG)*	✓		●	-	●	-	●	-	●	-	●	-	●
V984Q (PG)*	✓		●	-	●	-	●	-	●	-	●	-	●
M431 (PG, PCAP)	✓		-	●	-	●	-	●	-	●	-	●	●
M491 (PG, PCAP)	✓		-	●	-	●	-	●	-	●	-	●	●
M551 (PG, PCAP)	✓		-	●	-	●	-	●	-	●	-	●	●
M651 (PG, PCAP)	✓		-	●	-	●	-	●	-	●	-	●	●
MA431 (PG)	-		●	-	●	-	●	-	●	-	●	-	●
MA491 (PG)	-		●	-	●	-	●	-	●	-	●	-	●
MA551 (PG)	-		●	-	●	-	●	-	●	-	●	-	●
P435 (PG, MG)*	-		●	-	●	-	●	-	●	-	●	-	●
P495 (PG, MG)*	-		●	-	●	-	●	-	●	-	●	-	●
P555 (PG, MG)*	-		●	-	●	-	●	-	●	-	●	-	●
P754Q (PG)	✓		●	-	●	-	●	-	●	-	●	-	●
UN462A / UN462VA	-		●	-	●	-	●	-	●	-	●	-	●
UN552 / UN552V	-		●	-	●	-	●	-	●	-	●	-	●
UN552S / UN552VS	-		●	-	●	-	●	-	●	-	●	-	●
UN552A	-		●	-	●	-	●	-	●	-	●	-	●
UX552	-		●	-	●	-	●	-	●	-	●	-	●
X554HB	✓		●	-	●	-	●	-	●	-	●	-	●
X754HB	✓		●	-	●	-	●	-	●	-	●	-	●
CB651Q-2	✓		-	●	-	●	-	●	-	●	-	●	●
CB751Q	✓		-	●	-	●	-	●	-	●	-	●	●
CB861Q	✓		-	●	-	●	-	●	-	●	-	●	●

Display Model	Stands	Stands							
		Order Code	100013034	100014488	100015324	100012828	100013328	100013911	100014601
		ST-322	ST-43M	ST-551	ST-65M	ST-801	ST-32E2	ST-55E	
E328		-	-	-	-	-	●	-	
E438		-	-	-	-	-	●	-	
E498		-	-	-	-	-	●	-	
E558		-	-	-	-	-	●	-	
E658		-	-	-	-	-	●	-	
ME431		-	●	-	-	-	-	-	
ME501		-	●	-	-	-	-	-	
ME551		-	●	-	-	-	-	-	
ME651		-	-	-	●	-	-	-	
M431		-	●	-	-	-	-	-	
M491		-	●	-	-	-	-	-	
M551		-	●	-	-	-	-	-	
M651		-	-	-	●	-	-	-	
MA431		-	●	-	-	-	-	-	
MA491		-	●	-	-	-	-	-	
MA551		-	●	-	-	-	-	-	
C751Q (SST)		-	-	-	-	●	-	-	
C861Q (SST)		-	-	-	-	●	-	-	
C981Q (SST)		-	-	-	-	●	-	-	
V323-3 (PG)		●	-	-	-	-	-	-	
V404 (PG)		-	●	-	-	-	-	-	
V484 (PG)		-	●	-	-	-	-	-	
V754Q (PG)		-	-	-	-	●	-	-	
V864Q (PG)		-	-	-	-	●	-	-	
V984Q (PG)		-	-	-	-	●	-	-	
P435 (PG, MG)*		-	●	-	-	-	-	-	
P495 (PG, MG)*		-	●	-	-	-	-	-	
P555 (PG, MG)*		-	●	-	-	-	-	-	
P754Q (PG)		-	-	-	-	●	-	-	
UN462A / UN462VA		●	-	-	-	-	-	-	
UN552 / UN552V		-	-	●	-	-	-	-	
UN552S / UN552VS		-	-	●	-	-	-	-	
UN552A		-	-	●	-	-	-	-	
UX552		-	-	●	-	-	-	-	
X554HB		-	-	-	-	-	-	-	
X754HB		-	-	-	-	●	-	-	

* High-end Speakers (SP-xxSM) are not compatible with Protective Glass (PG), Mirror Glass (MG), ShadowSense Touch (SST) and 3M™ PCAP Touch PCAP Displays.

- Perfect Compatibility
- Compatible - speakers might bulge from the back surface. It might also require an additional mounting bracket - Please refer to the respective Product Datasheet for more details
- not Compatible

Direct view LED



Indoor and outdoor LED modules scale up to create attention grabbing walls of intensely vivid images for the brightest environments, available in a range of pixel pitches for up-close or long-distance viewing.

High quality precision engineered components configure to create a single homogenous digital canvas, purpose-designed for easy maintenance and long-life performance.

Indoor LED

0.9mm to 3.9mm

Outdoor LED

2.8mm to 4.8mm

UP TO*
5
YEARS
OPTIONAL
WARRANTY

dvLED

E Series Bundles	Entry level visualisation in ready-to-go size and pixel options
FE-E Series	Mainstream scalable visualisation with cost and eco savings
FE Series	Flexible visualisation at the perfect price performance level
FE Series Bundles	Standard resolution bundles for signage and conferencing
FA Series	High class components and full redundancy for mission critical applications
FA Series Bundles	Fully redundant standard resolution bundles for mission critical applications
Q Series	Square modules for indoor and outdoor signage applications
B Series	Modules with EMC Class B certification for sizes of up 40m ²
A Series	Plug & play solution for signage applications

* On selected models

E Series Bundles | Indoor FinePitch LED Bundles

For budget sensitive deployments, the E Series brings all the advantages of fine-pitch LED yet in an all-in-one bundle in three size and pixel pitch options. The slim, elegant design plus the robustness and safety of the metal chassis make it the perfect choice for corporate meeting room scenarios as well as most signage applications in public spaces.

108" to 132"

E Series Bundles

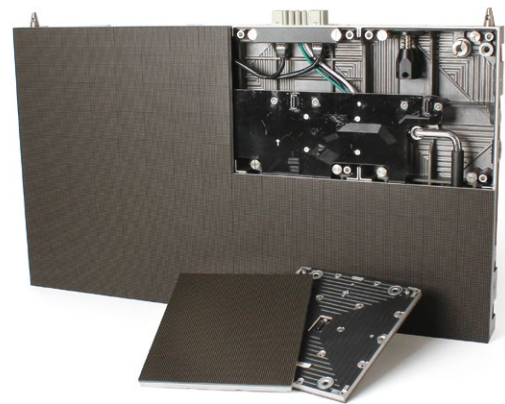


FE-E Series | Indoor FinePitch LED Modules

Where installations demand a cost efficient solution without compromising on functionality and quality, the FE-E Series pixel card options offer great value for the money. Three pixel pitch options provide ample flexibility to achieve scalable large surface digitisation for signage and presentation applications.

1.2mm to 1.9mm

FE-E Series

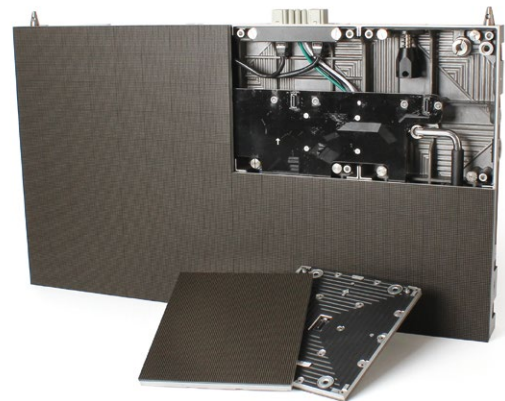


FE Series | Indoor FinePitch LED Modules

Scalable, fine-pitch visualisation for indoor bezel-free large surfaces, the FE Series offers 0.9mm to 3.8mm pixel pitch options to suit usage and budget parameters. Excellent viewing angles, consistent reality-like colours, superb brightness and long lasting performance for conferencing and signage applications.

0.95mm to 3.8mm

FE Series Bundles



FE Series Bundles | Indoor FinePitch LED Bundles

Either free standing or for seamless integration into interiors, the FE Series bundles provide an off-the-shelf, all-in-one solution for large digital surfaces from 110" to 220". Easy to maintain and upgrade with front serviceable pixel cards; everything's included for straight forward deployment and fuss-free operation.

110" to 220"

FE Series

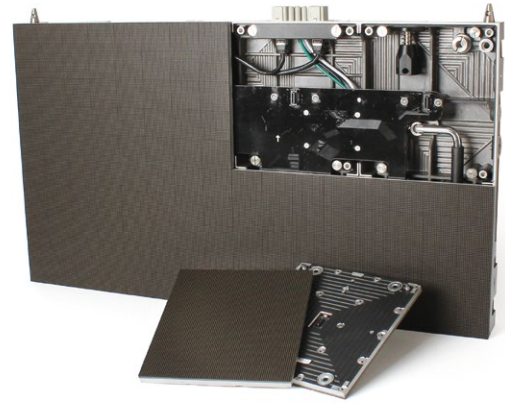


FA Series | Indoor FinePitch LED Modules

All Sharp/NEC LED products are meticulously designed and built for reliable long lasting performance; the FA Series features additional fail-safe qualities with redundant power supply and receiver card ensuring mission-critical performance standards. Select your pixel pitch according to room size and viewing distance parameters.

0.95mm to 3.8mm

FA Series

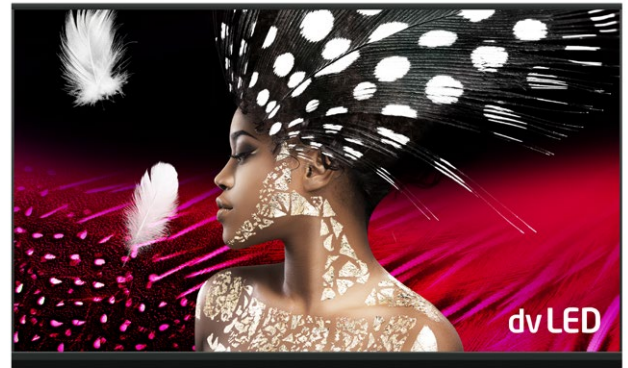


FA Series Bundles | Indoor FinePitch LED Bundles

An off-the-shelf solution for large surface visualisation in control rooms and passenger terminals; anywhere where fail-safe performance is critical. Available in four standard sized bundles up to 220", the 16:9 modules configure to deliver superb viewing experiences and unmatched longevity and reliability.

110" to 220"

FA Series Bundles



Q Series | Indoor and Outdoor Signage

Versatile and customisable, the light weight, slim profile, 1:1 aspect ratio modules configure to maximise the given space and generate extraordinary visual experiences. High brightness levels, along with wide viewing angles and unrivalled contrast ratios up to make the Q Series shine out even in the brightest environments.

Indoor: 3.9mm Outdoor: 2.8mm to 4.8mm

Q Series



B Series | Indoor EMC Class B LED Modules

For busy public spaces especially airport terminals it is vital to limit electromagnetic interference which can compromise WiFi connections and even air traffic control operations. The NEC B Series is fully compliant to EMC Class B, causing no interference up to 40m2. The versatile 1:1 modules deliver 1000cd/m2 brightness.

3.9mm

B Series

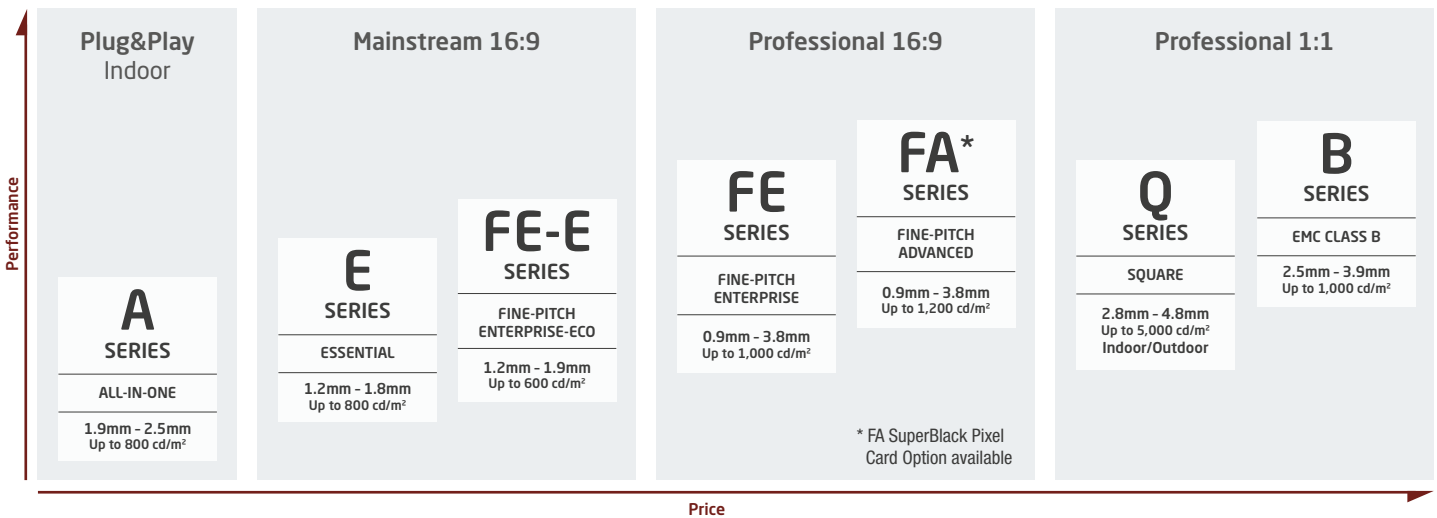


A Series | Indoor LED Poster

A format ideal to replace traditional roll-up banners, this digital poster can be positioned anywhere its needed for promotional or wayfinding information that's instantly updatable. Free-standing or for integration into a housing, the A Series is robust for use in public spaces with a cleanable protective screen.

1.9mm and 2.5mm

A Series



E Series Bundles | Indoor FinePitch LED Bundles

	E012i-108	E015i-135	E018i-162
Order Code	81000231	81000232	81000233
Resolution	1920 x 1080	1920 x 1080	1920 x 1080
Module Configuration	4x4	5x5	6x6
Pixel Configuration	3-in-1 SMD (Black)	3-in-1 SMD (Black)	3-in-1 SMD (Black)
LED Type	SMD (1010)	SMD (1212)	SMD (1415)
Pixel Pitch [mm]	1,25	1,563	1,875
Brightness (max.) [cd/m ²]	600	600	800
Lifetime	100000	100000	100000
Contrast Ratio (typ.)	5000:1	4000:1	5000:1
Viewing Angle [°]	170 horizontal /160 vertical	140 horizontal /140 vertical	140 horizontal /140 vertical
Colour Processing	16 bit	16 bit	14 bit
LED Driving Method	1/45 dynamic scan	1/54 dynamic scan	1/60 dynamic scan
Refresh Rate [Hz]	3840	3840	3840
Colour Temperature [K]	3000-9500	3000-9500	3000-9500
Power Typical [W]	944	1000	1944
Dimensions (W x H x D) [mm]	2412 x 1456 x 47	3012 x 1793,5 x 47	3612 x 2131 x 47
Weight [kg]	89,2	134,5	189,2
Connectivity via Controller	3G SDI; DVI-D; HDMI; GenLock; LAN		
Serviceability	Front	Front	Front
IP Level (Front/Rear)	IP20	IP20	IP20
Certifications	CE, ETL, FCC Class A, RoHS	CE, ETL, FCC Class A, RoHS	CE, ETL, FCC Class A, RoHS
Shipping Content	1x LED Controller, 4x4x LED Modules, 1x Overframe Kit, 1x Power Bar, 1x Wall Mount, 1x Spare Parts Kit	1x LED Controller, 5x5x LED Modules, 1x Overframe Kit, 1x Power Bar, 1x Wall Mount, 1x Spare Parts Kit	1x LED Controller, 6x6x LED Modules, 1x Overframe Kit, 1x Power Bar, 1x Wall Mount, 1x Spare Parts Kit
Warranty	2 years (options to extend)		

FE-E Series | Indoor FinePitch LED Modules

	FE012i2-E	FE015i2-E	FE019i2-E
Order Code	81000224	81000225	81000226
LED Type	SMD (1010)	SMD (1010)	SMD (1010)
Number of Pixel per module [dot]	129600	82944	57600
Number of Pixel per card [dot]	16200	10368	7200
Pixel Pitch [mm]	1.267	1.583	1.9
Brightness (max.) [cd/m ²]	600	600	600
Lifetime	100000	100000	100000
Contrast Ratio (typ.)	4000:1	4000:1	4000:1
Viewing Angle [°]	160 horizontal /160 vertical	160 horizontal /160 vertical	160 horizontal /160 vertical
Colour Processing	16 bit	16 bit	16 bit
LED Driving Method	1/27 dynamic scan	1/27 dynamic scan	1/27 dynamic scan
Refresh Rate [Hz]	3840	3840	3840
Colour Temperature [K]	3000-9500	3000-9500	3000-9500
Power Typical [W] m ²	315	275	275
Power Maximum [W] m ²	600	600	600
Dimensions (W x H x D) [mm]	608 x 342 x 49	608 x 342 x 49	608 x 342 x 49
Weight [kg] Module	8,8	8,8	8,8
Serviceability	Front	Front	Front
IP Level (Front/Rear)	IP20	IP20	IP20
Certifications	CE, ETL, FCC Class A, RoHS	CE, ETL, FCC Class A, RoHS	CE, ETL, FCC Class A, RoHS
Warranty	2 years (options to extend)		

FE Series | Indoor FinePitch LED Modules

	FE009i2	FE012i2	FE015i2	FE019i2	FE025i2	FE031i2	FE038i2
Order Code	80000351	80000145	80000146	80000147	80000148	80000149	80000150
Pixel Configuration	4-in-1-IMD (Black)	3-in-1 SMD (Black)	3-in-1 SMD (Black)	3-in-1 SMD (Black)	3-in-1 SMD (Black)	3-in-1 SMD (Black)	3-in-1 SMD (Black)
LED type	IMD (1616)	SMD (1010)	SMD (1010)	SMD (1010)	SMD (1415)	SMD (1415)	SMD (1415)
Resolution per m ²	1108033	623269	398892	277008	155817	99723	69252
Number of Pixel per module [dot]	230400	129600	82944	57600	32400	20736	14400
Number of Pixel per card [dot]	28800	16200	10368	7200	8100	2592	1800
Pixel Pitch [mm]	0.95	1.266	1.583	1.9	2.375	2.714	3.8
Brightness (max.) [cd/m ²]	600	700	700	700	1000	1000	1000
Lifetime	100000 hours (50% brightness)				100000 hours (50% brightness)		
Contrast Ratio (typ.)	5000:1	5000:1	5000:1	5000:1	5000:1	5000:1	5000:1
Viewing Angle [°]	140 horizontal / 140 vertical	170 horizontal / 170 vertical	160 horizontal / 160 vertical	170 horizontal / 170 vertical	160 horizontal / 160 vertical		
Dimming Capability	256 levels	256 levels	256 levels	256 levels	256 levels	256 levels	256 levels
Colour Processing	16 bit	16 bit	16 bit	16 bit	16 bit	16 bit	16 bit
LED Driving Method	1/46 dynamic scan	1/27 dynamic scan	1/27 dynamic scan	1/30 dynamic scan	1/27 dynamic scan	1/27 dynamic scan	1/15 dynamic scan
Refresh Rate [Hz]	≤ 3840	≤ 3840	≤ 3840	≤ 3840	≤ 3840	≤ 3840	≤ 3840
Colour Temperature [K]	3000 - 9500 adjustable / 6500 default				3000 - 9500 adjustable / 6500 default		
Power Typical [W] m ²	380	300	275	275	225	225	225
Power Maximum [W] m ²	720	600	600	600	575	575	575
Dimensions (W x H x D) [mm]	608 x 342 x 49	608 x 342 x 49	608 x 342 x 49	608 x 342 x 49	608 x 342 x 49	608 x 342 x 49	608 x 342 x 49
Weight [kg] Module	8.8	8.8	8.8	8.8	8.8	8.8	8.8
Serviceability	Front				Front		
IP Level (Front/Rear)	IP20	IP20	IP20	IP20	IP20	IP20	IP20
Certifications	CE, ETL, FCC Class A, RoHS				CE, ETL, FCC Class A, RoHS		
Warranty	3 years (options to extend)				3 years (options to extend)		
Available Standard Resolution Sizes	165" UHD	110" FHD, 220" UHD	137" FHD	110" HD, 165" FHD	220" FHD	-	-

FE Series Bundles | Indoor FinePitch LED Bundles

	FE009i2-165	FE012i2-110	FE012i2-220	FE015i2-137	FE019i2-110	FE019i2-165	FE025i2-220
Order Code	81000112	81000028	81000050	81000020	81000027	81000029	81000030
Screen Size [inch/cm]	165 / 419	110 / 279	220 / 559	137 / 348	110 / 279	165 / 419	220 / 559
Resolution	3840 x 2160	1920 x 1080	3840 x 2160	1920 x 1080	1280 x 720	1920 x 1080	1920 x 1080
Module Configuration	6 x 6	4 x 4	8 x 8	5 x 5	4 x 4	6 x 6	8 x 8
Pixel Configuration	4-in-1 IMD (Black)	3-in-1 SMD (Black)	3-in-1 SMD (Black)	3-in-1 SMD (Black)	3-in-1 SMD (Black)	3-in-1 SMD (Black)	3-in-1 SMD (Black)
LED type	IMD (1616)	SMD (1010)	SMD (1010)	SMD (1010)	SMD (1010)	SMD (1010)	SMD (1415)
Pixel Pitch [mm]	0.95	1.266	1.266	1.583	1.9	1.9	2.533
Brightness (max.) [cd/m ²]	600	700	700	700	700	700	1000
Lifetime	100000 hrs (50% brightness)				100000 hrs (50% brightness)		
Contrast Ratio (typ.)	5000:1	5000:1	5000:1	5000:1	5000:1	5000:1	5000:1
Viewing Angle [°]	140 horizontal / 140 vertical	170 horizontal / 170 vertical			160 horizontal / 140 vertical		
Colour Processing	16 bit	16 bit	16 bit	16 bit	16 bit	16 bit	16 bit
LED Driving Method	1/46 dynamic scan	1/27 dynamic scan	1/27 dynamic scan	1/27 dynamic scan	1/30 dynamic scan	1/30 dynamic scan	1/27 dynamic scan
Refresh Rate [Hz]	≤ 3840	≤ 3840	≤ 3840	≤ 3840	≤ 3840	≤ 3840	≤ 3840
Colour Temperature [K]	3000 - 9500 adjustable / 6500 default				3000 - 9500 adjustable / 6500 default		
Power Typical [W]	380	912	3648	1425	912	2052	3008
Dimensions (W x H x D) [mm]	3688 x 2173,5 x 81	2472 x 1498,5 x 81	4904 x 2875,5 x 81	3080 x 1831,5 x 81	2472 x 1498,5 x 81	3688 x 2173,5 x 81	2472 x 1498,5 x 81
Weight [kg]	390	251	987	372	251	494	987
Bezel Width T-L-R / B [mm]	20-20-20 / 100	20-20-20 / 100	20-20-20 / 100	20-20-20 / 100	20-20-20 / 100	20-20-20 / 100	20-20-20 / 100
Connectivity via Controller	HDMI, DVI-D, 3G-SDI, LAN, GenLock				HDMI, DVI-D, 3G-SDI, LAN, GenLock		
Serviceability	Front	Front	Front	Front	Front	Front	Front
IP Level (Front/Rear)	IP20	IP20	IP20	IP20	IP20	IP20	IP20
Certifications	CE, ETL, FCC Class A, RoHS				CE, ETL, FCC Class A, RoHS		
Shipping Content	LED Modules, 1x LED Controller, 1x Wall Mount, 1x Power Bar, Overframe Kit, Spare Parts Kit, Pixel Card Removal Tool						
Warranty	3 years (options to extend)				3 years (options to extend)		

* FE-E pixel card additionally available

FA Series | Indoor FinePitch LED Modules

	FA009i2	FA012i2	FA015i2	FA019i2	FA025i2	FA031i2	FA038i2
Order Code	80000290	80000017	80000018	80000019	80000020	80000021	80000022
Pixel Configuration	4-in-1 IMD (Black)	3-in-1 SMD (Black)	3-in-1 SMD (Black)	3-in-1 SMD (Black)	3-in-1 SMD (Black)	3-in-1 SMD (Black)	3-in-1 SMD (Black)
LED type	IMD (1616)	SMD (1010)	SMD (1010)	SMD (1010)	SMD (1515)	SMD (1515)	SMD (1515)
Resolution per m ²	1108033	623269	398892	277008	155817	99723	69252
Number of Pixel per module [dot]	230400	129600	82944	57600	32400	20736	14400
Number of Pixel per card [dot]	28800	16200	10368	7200	8100	2592	1800
Pixel Pitch [mm]	0.95	1.266	1.583	1.9	2.533	3.167	3.8
Brightness (max.) [cd/m ²]	600	800	800	800	1200	1200	1200
Lifetime	100000 hours (50% brightness)				100000 hours (50% brightness)		
Contrast Ratio (typ.)	5000:1	5000:1	5000:1	5000:1	7000:1	7000:1	7000:1
Viewing Angle [°]	140 horizontal / 140 vertical	170 horizontal / 170 vertical			160 horizontal / 160 vertical		
Colour Processing	16 bit	16 bit	16 bit	16 bit	16 bit	16 bit	16 bit
LED Driving Method	1/46 dynamic scan	1/27 dynamic scan	1/27 dynamic scan	1/30 dynamic scan	1/30 dynamic scan	1/27 dynamic scan	1/15 dynamic scan
Refresh Rate [Hz]	≤ 3840	≤ 3840	≤ 3840	≤ 3840	≤ 3840	≤ 3840	≤ 3840
Colour Temperature [K]	3000 - 9500 adjustable / 6500 default				3000 - 9500 adjustable / 6500 default		
Power Typical [W] m ²	380	315	275	275	225	225	225
Power Maximum [W] m ²	720	600	600	600	575	575	575
Dimensions (W x H x D) [mm]	608 x 342 x 49	608 x 342 x 49	608 x 342 x 49	608 x 342 x 49	608 x 342 x 49	608 x 342 x 49	608 x 342 x 49
Weight [kg] Module	8.8	8.8	8.8	8.8	8.8	8.8	8.8
Serviceability	Front	Front	Front	Front	Front	Front	Front
IP Level (Front/Rear)	IP20	IP20	IP20	IP20	IP20	IP20	IP20
Certifications	CE, FCC Class A, RoHS				CE, FCC Class A, RoHS		
Warranty	3 years (options to extend)				3 years (options to extend)		
Available Standard Resolution Sizes	165" UHD	110" FHD, 220" UHD	137" FHD	110" HD, 165" FHD	220" FHD	-	-

FA Series Bundles | Indoor FinePitch LED Bundles

	FA009i2-165	FA012i2-110	FA012i2-220	FA015i2-137	FA019i2-110	FA019i2-165	FA025i2-220
Order Code	81000101	81000002	81000021	81000004	81000003	81000005	81000006
Screen Size [inch/cm]	165 / 419	110 / 279	220 / 559	137 / 348	110 / 279	165 / 419	220 / 559
Resolution	3840 x 2160	1920 x 1080	3840 x 2160	1920 x 1080	1280 x 720	1920 x 1080	1920 x 1080
Module Configuration	6 x 6	4 x 4	8 x 8	5 x 5	4 x 4	6 x 6	8 x 8
Pixel Configuration	4-in-1 IMD (Black)	3-in-1 SMD (Black)	3-in-1 SMD (Black)	3-in-1 SMD (Black)	3-in-1 SMD (Black)	3-in-1 SMD (Black)	3-in-1 SMD (Black)
LED type	IMD (1616)	SMD (1010)	SMD (1010)	SMD (1010)	SMD (1010)	SMD (1010)	SMD (1515)
Pixel Pitch [mm]	0.95	1.266	1.266	1.583	1.9	1.9	2.533
Brightness (max.) [cd/m ²]	600	800	800	800	800	800	1200
Lifetime	100000 hours (50% brightness)				100000 hours (50% brightness)		
Contrast Ratio (typ.)	5000:1	5000:1	5000:1	5000:1	5000:1	5000:1	7000:1
Viewing Angle [°]	140 horizontal / 140 vertical	170 horizontal / 170 vertical			160 horizontal / 160 vertical		
Colour Processing	16 bit	16 bit	16 bit	16 bit	16 bit	16 bit	16 bit
LED Driving Method	1/46 dynamic scan	1/27 dynamic scan	1/27 dynamic scan	1/27 dynamic scan	1/30 dynamic scan	1/30 dynamic scan	1/27 dynamic scan
Refresh Rate [Hz]	≤ 3840	≤ 3840	≤ 3840	≤ 3840	≤ 3840	≤ 3840	≤ 3840
Colour Temperature [K]	3000 - 9500 adjustable / 6500 default				3000 - 9500 adjustable / 6500 default		
Power Typical [W]	2880	912	3648	1425	912	2050	3008
Dimensions (W x H x D) [mm]	3688 x 2173,5 x 81	2472 x 1498,5 x 81	4904 x 2875,5 x 81	3080 x 1831,5 x 81	2472 x 1498,5 x 81	3688 x 2173,5 x 81	2472 x 1498,5 x 81
Weight [kg]	390	251	660	372	251	494	987
Bezel Width T-L-R / B [mm]	20-20-20 / 100	20-20-20 / 100	20-20-20 / 100	20-20-20 / 100	20-20-20 / 100	20-20-20 / 100	20-20-20 / 100
Connectivity (via Controller)	HDMI, DVI-D, 3G-SDI, LAN, GenLock				HDMI, DVI-D, 3G-SDI, LAN, GenLock		
Redundancy	LED Controllers, Power Supplies, Receiving Cards				LED Controllers, Power Supplies, Receiving Cards		
Serviceability	Front	Front	Front	Front	Front	Front	Front
IP Level (Front/Rear)	IP20	IP20	IP20	IP20	IP20	IP20	IP20
Certifications	CE, FCC Class A, RoHS, ETL	CE, FCC Class A, RoHS,	CE, FCC Class A, RoHS, ETL	CE, FCC Class A, RoHS			
Shipping Content	LED Modules, 2x LED Controller, 1x Wall Mount, 1x Power Bar, Overframe Kit, Spare Parts Kit, Pixel Card Removal Tool						
Warranty	3 years (options to extend)				3 years (options to extend)		

FA Series | Indoor FinePitch Super Black LED Modules **Q Series | Indoor and Outdoor Signage**

	FA012i2-SB	FA015i2-SB
Order Code	81000120	81000122
LED Type	SMD (1010)	SMD (1010)
Number of Pixel per module [dot]	129600	82944
Number of Pixel per card [dot]	16200	10368
Pixel Pitch [mm]	1267	1583
Brightness (max.) [cd/m ²]	400	400
Lifetime	100000	100000
Contrast Ratio (typ.)	5000:1	5000:1
Viewing Angle [°]	140 horizontal / 140 vertical	140 horizontal / 140 vertical
Colour Processing	16 bit	16 bit
LED Driving Method	1/27 dynamic scan	1/27 dynamic scan
Refresh Rate [Hz]	3840	3840
Colour Temperature [K]	3000-9500	3000-9500
Power Typical [W] m ²	315	275
Power Maximum [W] m ²	600	600
Dimensions (W x H x D) [mm]	608 x 342 x 49	608 x 342 x 49
Weight [kg] Module	8.8	8.8
Serviceability	Front	Front
IP Level (Front/Rear)	IP20	IP20
Certifications	CE, ETL, FCC Class A, RoHS	CE, ETL, FCC Class A, RoHS
Warranty	2 years (options to extend)	

	Q028i2	Q039i2
Ordercode	80000023	80000024
Pixel Configuration	3-in-1 SMD (Black)	3-in-1 SMD (Black)
LED type	SMD (2121)	SMD (2121)
Resolution per m ²	123904	65536
Number of Pixel per module [dot]	176 x 176	128 x 128
Pixel Pitch [mm]	2.841	3.91
Brightness (max.) [cd/m ²]	1200	1200
Lifetime	100000 hours (50% brightness)	
Contrast Ratio (typ.)	7.000:1	7.000:1
Viewing Angle [°]	160 horizontal / 140 vertical	140 horizontal / 140 vertical
Dimming Capability	256 levels	256 levels
Colour Processing	16 bit	16 bit
LED Driving Method	1/22 dynamic scan	1/16 dynamic scan
Refresh Rate [Hz]	< 3840	< 3840
Colour Temperature [K]	3200 - 9300	3200 - 9300
Power Typical [W] m ²	200	200
Power Maximum [W] m ²	480	480
Dimensions (W x H x D) [mm]	500 x 500 x 70	500 x 500 x 70
Weight [kg]	8.3	8.3
Dimension Pixelcard (W x H) [mm]	250 x 250	250 x 250
Serviceability	Front; Rear Service	
IP Level (Front/Rear)	IP30	IP30
Certifications	CE, ETL, FCC Class A, RoHS	
Warranty	2 years (options to extend)	

Q Series | Indoor and Outdoor Signage

B Series

A Series | Indoor LED Poster

	Q028e2	Q039e2	Q048e2	B039i	A019i	A025i
Ordercode	80000027	80000028	80000029	80000026	80000009	80000010
Pixel Configuration	3-in-1 SMD (Black)	3-in-1 SMD (Black)	3-in-1 SMD (Black)	3-in-1 SMD (Black)	3-in-1 SMD (Black)	3-in-1 SMD (Black)
LED type	SMD (1415)	SMD (1921)	SMD (1921)	SMD (2121)	SMD (1010)	SMD (2121)
Resolution per m ²	123904	65536	43264	65536	257307	155655
Number of Pixel per module [dot]	176 x 176	128 x 128	104 x 104	4096	279936	169344
Pixel Pitch [mm]	2.84	3.91	4.8	3.91	1.944	2.5
Brightness (max.) [cd/m ²]	4000	5500	5500	1000	1000	1000
Lifetime	100000 hours (50% brightness)			100000 hours (50% brightness)	100000 hours (50% brightness)	
Contrast Ratio (typ.)	7.000:1	6000:1	6000:1	3000:1	4500:1	4500:1
Viewing Angle [°]	140 horizontal / 140 vertical	140 horizontal / 120 vertical	140 horizontal / 140 vertical	160 hor / 160 ver	150 horizontal / 140 vertical	
Colour Processing	256 levels	256 levels	256 levels	16 bit	13 bit	13 bit
Colours	16 bit	16 bit	16 bit	281 trillion	549 billion	549 billion
LED Driving Method	1/22 dynamic scan	1/8 dynamic scan	1/13 dynamic scan	1/16 dynamic scan	1/27 dynamic scan	1/28 dynamic scan
Refresh Rate [Hz]	< 3840	< 3840	< 3840	2400	2880	2880
Colour Temperature [K]	3200 - 9300	3200 - 9300	3200 - 9300	3200 - 9300 adjustable	3200 - 9300 adjustable	
Power Typical [W] m ²	270	240	240	136	250	200
Power Maximum [W] m ²	720	640	640	400	750	600
Dimensions (W x H x D) [mm]	500 x 500 x 70	500 x 500 x 70	500 x 500 x 70	500 x 500 x 78	572 x 1,902 x 35	572 x 1,902 x 35
Weight [kg]	8.5	8.5	8.5	9	32	32
Dimension Pixelcard (W x H) [mm]	250 x 250	250 x 250	250 x 250	250 x 250	-	-
Serviceability	Front; Rear Service			Standard Rear, Front Optional	Front	Front
IP Level (Front/Rear)	IP65	IP65	IP65	IP30	IP20	IP20
LED Protection	-	-	-	-	Clear Protection Layer	
Certifications	CE, ETL, FCC Class A, RoHS			CE, EMC Class B, RoHS, CCC	CE, FCC Class A, RoHS, CCC	
Warranty	2 years (options to extend)			2 years (options to extend)	2 years (options to extend)	

Projectors



With scalable bezel-free image sizing, projection is the most flexible of display solutions providing creative opportunities to inform, present and impress. Offering many advantages where flat screen displays are unsuitable, Sharp/NEC offers a wide range of technologies and brightness levels to perfectly meet the needs of numerous and varied applications.

Desktop Projectors

ME Series Light-weight yet powerfully bright portable projection

Professional Projectors

PE-P Series Professional installation balancing price with impressive performance

Installation Projectors

PA Series Ready for large venue installations requiring great visual performance

PX Series Maximum flexibility and extraordinary brightness for large venues

PH Series For demanding large venue setups and uncompromising visualisation

3
YEARS
WARRANTY

UP TO
5
YEARS
OPTIONAL
WARRANTY

Desktop Projectors

Adaptable, professional projectors for mobile or mounted usage, Sharp/NEC's desktop projection range delivers good brightness capacities and long lamp and filter life to ensure a compellingly low total cost of ownership (TCO). Let your presentation shine bright and vivid with the confidence that your investment is secure.

3800 to 4000 Lumen*

ME Series



Professional Projectors

With high brightness levels and professional features, this series delivers affordable large-screen projection performance. Enjoy peace of mind with future proof connectivity and a low total cost of ownership (TCO). Deliver impressive high impact presentations, further enhanced by our super-silent laser models for no noise disturbance during meetings.

4500 to 6000 Lumen*

PE Series

P Series



Installation Projectors

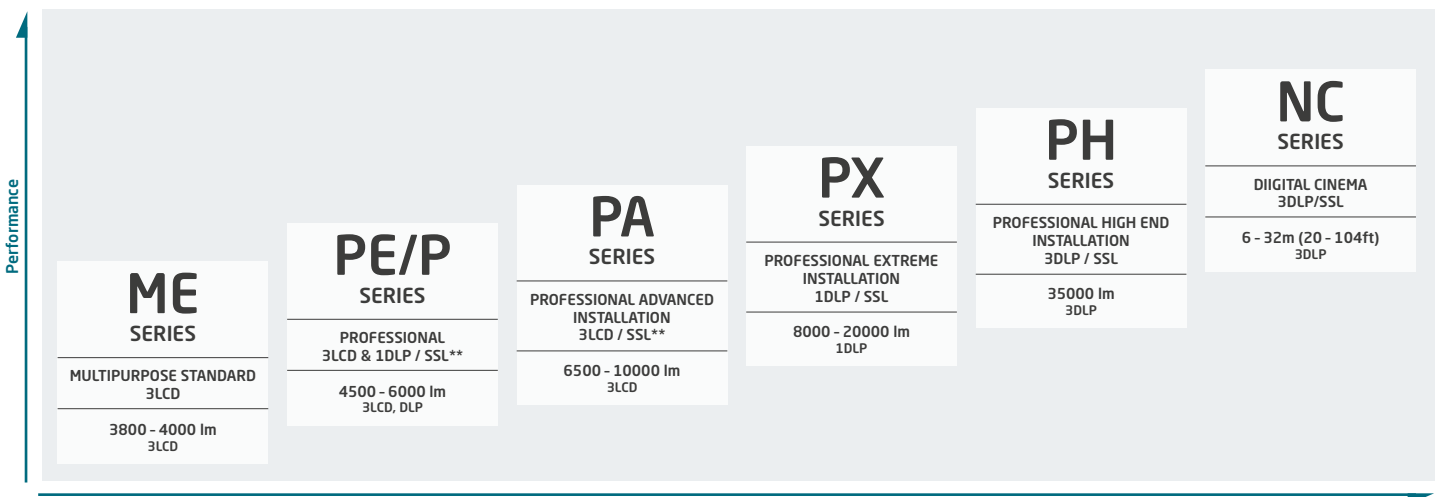
For demanding professional setups, Sharp/NEC's installation projector ranges provide 24/7 operation, low TCOs driven by low maintenance filter-free design and long-lasting 20,000 h laser light technology, latest interface technologies and highest installation flexibility. With premium class picture quality these projection solutions offer a compelling proposition.

6500 to 40000 Lumen*

PA Series

PX Series

PH Series



Price

ME Series | Desktop

PE Series | Professional

	ME383W	ME403U
Order Code	60005220	60005221
Projection Technology	3LCD	3LCD
Aspect Ratio	16:10	16:10
Native Resolution	1280 x 800 (WXGA)	1920 x 1200 (WUXGA)
Brightness [Lumen]	3800	4000
Contrast Ratio	16000:1	16000:1
Projection Factor	1.2 – 2.1 : 1	1.2 – 2.1 : 1
Projection Distance [m]	0.94 – 11.59	0.75 – 12.88
Projection Angle [°]	6.6 - 11.1	6.6 - 11.1
Screen Size (cm / inch)	min. 76 / 30 max. 762 / 300	min. 76 / 30 max. 762 / 300
Zoom / Focus	x1.7 / Manual	x1.6 / Manual
Connectivity	2 HDMI, RGB: in/Out, Video, LAN, PC Control, USB B, Audio: 2 In, 1 Out	2 HDMI, RGB: in/Out, Video, LAN, PC Control, USB B, Audio: 2 In, 1 Out
Power [W AC] Hi-Bright / Normal / ECO / Power-Saving	288 / 196 / 0.5	295 / 207 / 0.5
Lamp Life Normal / ECO [hrs.]	10000 / 20000	10000 / 20000
Dimensions (W x H x D) [mm]	345 x 104.6 x 261	345 x 104.6 x 261
Weight [kg]	3.2	3.5
Speakers (mono) [W]	1 x 16	1 x 16
NaViSet Administrator 2	•	•

	PE455WL	PE455UL
Ordercode	60004913	60004912
Projection Technology	3LCD	3LCD
Aspect Ratio	16:10	16:10
Native Resolution	1280 x 800 (WXGA)	1920 x 1200 (WUXGA)
Brightness [Lumen]	4500	4500
Contrast Ratio	500000:1	500000:1
Projection Factor	15:9	15:9
Projection Distance [m]	0.8 - 13.5	0.8 - 13.5
Projection Angle [°]	-	-
Screen Size (cm / inch)	min.: 76.2 / 30 max.: 762 / 300	min.: 76.2 / 30 max.: 762 / 300
Zoom / Focus	Digital / Manual	Digital / Manual
Connectivity	2 HDMI, D-Sub 15-pin, PC Control, USB A, USB B (for Service), LAN, optional WLAN, Audio: 1 In, 1 Out, MultiPresenter functionality	
Power [W AC] Hi-Bright / Normal / ECO / Power-Saving	- / 308 / 222 / 0.3	- / 308 / 222 / 0.3
Lamp Power: [W / UHP AC]	Laser Phosphor	Laser Phosphor
Lamp Life Normal / ECO [hrs.]	20000	20000
Dimensions (W x H x D) [mm]	480 x 122 x 407	480 x 122 x 407
Weight [kg]	9.7	9.7
Speakers [W]	1 x 20	1 x 20
Education Warranty Available	-	-
NaViSet Administrator 2	•	•

P Series | Professional

	P554W	P554U	P603X	P506QL	P525WL	P525UL	P605UL
Order Code	60004330	60004329	60004331	60004812	60004328	60004708	60004811
Projection Technology	3LCD	3LCD	3LCD	1-chip DLP™	3LCD	3LCD	3LCD
Aspect Ratio	16:10	16:10	4:3	16:9	16:10	16:10	16:10
Resolution	1280 x 800 (WXGA)	1920 x 1200 (WUXGA)	1024 x 768 (XGA)	3840 x 2160 (4K UHD)	1280 x 800 (WXGA)	1920 x 1200 (WUXGA)	1920 x 1200 (WUXGA)
Brightness [Lumen]	5500	5300	6000	5000	5000	5000	6000
Brightness in ECO Mode [approx. %]	80	80	80	80	80	80	80
Contrast Ratio	20000:1	20000:1	20000:1	500000:1	500000:1	500000:1	500000:1
Lens [mm]	F= 1.7 - 2.2 f= 17.4 - 29.0	F= 1.5 - 2.08 f= 17.2 - 27.7	F= 1.7 - 2.2 f= 17.4 - 29.0	F= 1.8-2.43, f= 12.1-18.1	F= 1.5 - 2.1 f= 17.2 - 27.6	F= 1.5 - 2.1 f= 17.2 - 27.6	F= 1.5 - 2.1 f= 17.2 - 27.6
Projection Factor (std. option)	1.2 - 2.1:1	1.2 - 2.0:1	1.3 - 2.2:1	1.13 - 1.7:1	1.23 - 2:1	1.23 - 2:1	1.23 - 2:1
Projection Distance [m]	0.8 - 13.5	0.8 - 12.9	0.8 - 13.8	1.6 - 8	0.8 - 13.5	0.8 - 13.5	0.8 - 13.5
Screen Size (cm / inch)	min.: 76 / 30 max.: 762 / 300	min.: 76 / 30 max.: 762 / 300	min.: 76 / 30 max.: 762 / 300	min.: 127 / 50 max.: 787 / 310	min.: 76 / 30 max.: 762 / 300	min.: 76 / 30 max.: 762 / 300	min.: 76 / 30 max.: 762 / 300
Lens Adjustment	Manual	Manual	Manual	Manual	Manual	Manual	Manual
Connectivity	2 HDMI, HDBaseT, Video, USB A, USB B (for Service), PC Control, D-Sub 15-pin, LAN, Audio: 2 In, 1 Out		2 HDMI, Video, USB A, USB B (for Service), PC Control, D-Sub 15-pin, LAN, Audio: 2 In, 1 Out	2 HDMI, HDBaseT, D-Sub 15-pin, PC Control, USB A, USB B (for Service), LAN, optional WLAN, Audio: 1 In, 1 Out, 3D Sync	2 HDMI, HDBaseT, D-Sub 15-pin, PC Control, USB A, USB B (for Service), LAN, optional WLAN, Audio: 1 In, 1 Out, MultiPresenter functionality		
Power [W AC] Standard / ECO / Power-Saving	422 / 267 / 0.2	431 / 277 / 0.17	414 / 258 / 0.2	580 / 330 / 0.5	320 / 238 / 0.3	320 / 238 / 0.3	320 / 238 / 0.3
Lamp Power: [W / UHP AC]	330	330	330	Laser Phosphor	Laser Phosphor	Laser Phosphor	Laser Phosphor
Lamp Life: Normal / ECO [hrs.]	4000 / 8000	4000 / 8000	4000 / 8000	20000	20000	20000	20000
Dimensions (W x H x D) [mm]	420 x 133 x 322	420 x 133 x 322	420 x 133 x 322	480 x 158 x 400	480 x 122 x 407	480 x 122 x 407	480 x 122 x 407
Weight [kg]	4.7	4.8	4.7	11.5	9.7	9.7	9.7
Speakers (mono) [W]	1 x 20	1 x 20	1 x 20	1 x 10	1 x 20	1 x 20	1 x 20
Education Warranty Available	•	•	•	-	-	-	-
NaViSet Administrator 2	•	•	•	•	•	•	•

PA Series | Professional Advanced

	PA653U	PA703W	PA803U	PA853W	PA903X	PA703UL	PA804UL	PA1004UL
Order Code	60004120	60004080	60004121	60004119	60004118	60004921	60005161 (BK) 60005035 (WH)	60005160 (BK) 60004512 (WH)
Projection Technology	3LCD	3LCD	3LCD	3LCD	3LCD	3LCD	3LCD	3LCD
Aspect Ratio	16:10	16:10	16:10	16:10	4:3	16:10	16:10	16:10
Native Resolution	1920 x 1200 (WUXGA)	1280 x 800 (WXGA)	1920 x 1200 (WUXGA)	1280 x 800 (WXGA)	1024 x 768 (XGA)	1920 x 1200 (WUXGA)	1920 x 1200 (WUXGA)	1920 x 1200 (WUXGA)
Brightness [Lumen]	6500	7000	8000	8500	9000	7000	8200	10000
Brightness in ECO Mode [approx. %]	80	80	80	80	80	80	80	80
Contrast Ratio	8000:1	8000:1	10000:1	10000:1	10000:1	2500000:1	3000000:1	3000000:1
Lens [mm]	optional	optional	optional	optional	optional	optional	optional	optional
Lens: optional bayonet lenses	9	9	9	9	9	4	9	9
Projection Factor (std. option)	1.3-3.02:1 (NP41ZL)	1.3-3.02:1 (NP41ZL)	1.3-3.02:1 (NP41ZL)	1.3-3.02:1 (NP41ZL)	1.3-3.02:1 (NP41ZL)	1.3-3.02:1 (NP41ZL)	1.3-3.02:1 (NP41ZL)	1.3-3.02:1 (NP41ZL)
Projection Distance [m]	0.7 - 50.9	0.7 - 50.9	0.7 - 50.9	0.7 - 50.9	0.7 - 50.9	0.7 - 50.9	0.7 - 50.9	0.7 - 50.9
Screen Size (cm / inch)	1270 / 500	1270 / 500	1270 / 500	1270 / 500	1270 / 500	1270 / 500	1270 / 500	1270 / 500
Lens Adjustment	Manual / Motorised	Manual / Motorised	Manual / Motorised	Manual / Motorised	Manual / Motorised	Motorised	Manual / Motorised	Manual / Motorised
Connectivity	HDMI: 2 In, DP, D-Sub 15-pin, LAN, USB A, HDBaseT In/ Out, Audio: 1 In, 1 Out, 3D Sync, Remote In				HDMI: 2 In, DP, D-Sub 15-pin, LAN, USB A, HDBaseT In/ Out, Audio: 1 In, 1 Out, 3D Sync, Remote In			
Power [W AC] Standard / ECO / Power-Saving	482 / 376 / 0.26	482 / 376 / 0.26	542 / 376 / 0.26	542 / 376 / 0.26	542 / 376 / 0.26	613 / 556 / 0.16	615 / 350 / 0.28	725 / 395 / 0.28
Lamp Power: Normal / ECO [W / UHP AC]	370 / 280	370 / 280	420 / 280	420 / 280	420 / 280	Laser Phosphor	Laser Phosphor	Laser Phosphor
Lamp Life: Hi Br / Normal / ECO [hrs.]	- / 4000 / 5000	- / 4000 / 5000	- / 3000 / 5000	- / 3000 / 5000	- / 3000 / 5000	20000	20000	20000
Dimensions (W x H x D) [mm]	499 x 163.7 x 406	499 x 163.7 x 406	499 x 163.7 x 406	499 x 163.7 x 406	499 x 163.7 x 406	580 x 208 x 494	599 x 208 x 490	599 x 208 x 490
Weight [kg]	10.2	10.2	10.2	10.2	10.2	18.2	24.1	24.4
NaViSet Administrator 2	•	•	•	•	•	•	•	•
ProAssist	-	-	-	-	-	•	•	•

PX Series | Professional Extreme

PH Series | High-End

	PX803UL	PX1004UL	PX1005QL	PX2000UL	PH3501QL
Order Code	60004009 (BK), 60004010 (WH)	60004235 (BK), 60004077 (WH)	60004489 (BK), 60004490 (WH)	60004511	60004622
Projection Technology	1-chip DLP™	1-chip DLP™	1-chip DLP™	1-chip DLP™	3-chip DLP™
Aspect Ratio	16:10	16:10	16:9	16:10	17:9
Native Resolution	1920 x 1200 (WUXGA)	1920 x 1200 (WUXGA)	3840 x 2160 (4KUHD)	1920 x 1200 (WUXGA)	4096 x 2160 (4K)
Brightness [Lumen]	8000	10000	10000	18000	35000
Brightness in ECO Mode [approx. %]	80	80	80	80	80
Contrast Ratio (DB™ = with DynamicBlack™)	10000:1	10000:1	10000:1	10000:1	30000:1
Lens [mm]	optional	optional	optional	optional	optional
Lens: optional bayonet lenses (LM = with lens memory)	8 (6 with LM)	8 (6 with LM)	8 (6 with LM)	5	7
Projection Factor (std. option)	depending on lens selection	depending on lens selection	depending on lens selection	depending on lens selection	depending on lens selection
Projection Distance [m]	0.86 - 118	0.86 - 118	0.86 - 118	0.81 - 84	2.0 - 50.0
Screen Size (cm / inch)	Min: 100 / 40 Max: 1270 / 500	Min: 100 / 40 Max: 1270 / 500	Min: 100 / 40 Max: 1270 / 500	Min: 100 / 40 Max: 1270 / 500	min.: 254 / 100 max.: 2540 / 1000
Lens Adjustment	Motorised	Motorised	Motorised	Motorised	Motorised
Connectivity	HD-BaseT, HDMI In/Out, DP, RGB In, 5BNC (incl. Video / S-Video), LAN, optional WLAN, USB A, PC Control, 3D Sync Out, Remote In, OPS slot		HDBaseT, 2 DP, 2 HDMI In, LAN, USB Typ A, PC Control, 3D Sync, 4x 3G-SDI, Remote-In, OPS slot	HDBaseT, DP, 2 HDMI, DVI, 3G-SDI, S-Sub9, 5BNC, Mini D-sub 15 pin, RJ45	HDBaseT, 2 DP, 2 HDMI In, LAN, USB Typ A, PC Control, 3D Sync, 4 x 3G-SDI, Remote-In, OPS slot
Power [W AC] Standard / ECO	850 / 446	1165 / 605	1222 / 977	1900 / -	4705
Lamp Power: Normal / ECO [W / UHP AC]	Laser Phosphor	Laser Phosphor	Laser Phosphor	RB Laser	RB Laser
Lamp Life: Hi Br / Normal / ECO [hrs.]	20000	20000	20000	20000	20000
Dimensions (W x H x D) [mm]	500 / 211 / 577	500 / 211 / 577	500 / 211 / 577	745 / 248 / 530	697 x 455 x 1180
Weight [kg]	28	28	28	54	169
NaViSet Administrator 2	•	•	•	•	•
ProAssist*	•	•	○	-	-

Digital Cinema Projectors

Deliver a blockbuster experience satisfying the highest expectations of today's cinema-goers. A leading name in Digital Cinema projection, Sharp/NEC's modular customizable solutions can be configured to suit whatever size and format of venue to maximize revenue generation. Breath-taking, pin sharp images with precise colour reproduction plus easy operation makes Sharp/NEC the ideal solution for theatres and art houses.



For more detailed information please visit: www.digital-cinema-nec.com

NC Series | Digital Cinema

	NC1000C	NC2000C	NC3240S	NC1201L	NC1402L	NC1700L	NC2041L
Order Code	60004093	60002815	60003070	60003926	60005041	60004088	60004090
DMD	DC Chip DLP Technology	DC Chip DLP Technology	DC Chip DLP Technology	DC Chip DLP Technology	DC Chip DLP Technology	DC Chip DLP Technology	DC Chip DLP Technology
Screen Sizes (m)	up to 10.6	up to 20	up to 32	up to 12	up to 14	up to 17	up to 20
Light Source	400 W x 2 NSH Lamps	max 4.0KW	max. 7.0KW	Laser Phosphor	Laser Phosphor	RB Laser	RB Laser
Contrast Ratio (full on/off)	> 1600:1	> 2200:1	> 2200:1	> 1650:1	> 1600:1	> 1750:1	> 2000:1
DMD Specifications	2K, 0.69" DC2K	2K, 0.98" DC2K	4K, 1.38" DC2K	2K, 0.69" DC2K	2K, 0.69" DC2K	2K, 0.69" DC2K	4K, 1.38" DC4K
Primary Lenses	1.2 to 1.72:1 zoom; 1.33 to 2.1:1 zoom; 1.62 to 2.7:1 zoom; 2.09 to 3.9:1 zoom; 4.07 to 6.34:1 zoom	1.2 to 1.8:1 zoom; 1.3 to 1.75:1 zoom; 1.4 to 2.05:1 zoom; 1.59 to 2.53:1 zoom; 1.9 to 3.25:1 zoom; 2.4 to 3.9:1 zoom; 3.9 to 6.52:1 zoom	1.13 to 1.66:1 zoom; 1.30 to 1.85:1 zoom; 1.44 to 2.16:1 zoom; 1.63 to 2.71:1 zoom; 1.95 to 3.26:1 zoom; 2.71 to 3.89:1 zoom	1.2 to 1.72:1 zoom; 1.33 to 2.1:1 zoom; 1.62 to 2.7:1 zoom; 2.09 to 3.9:1 zoom; 4.07 to 6.34:1 zoom	1.2 to 1.72:1 zoom; 1.33 to 2.1:1 zoom; 1.62 to 2.7:1 zoom; 2.09 to 3.9:1 zoom; 4.07 to 6.34:1 zoom	1.2 to 1.72:1 zoom; 1.33 to 2.1:1 zoom; 1.62 to 2.7:1 zoom; 2.09 to 3.9:1 zoom; 4.07 to 6.34:1 zoom	1.13 to 1.66:1 zoom; 1.3 to 1.85:1 zoom; 1.45 to 2.17:1 zoom; 1.63 to 2.71:1 zoom; 1.95 to 3.26:1 zoom; 2.71 to 3.89:1 zoom
Dimension (W x H x D) [mm]	621 x 314 x 798	700 x 503 x 990	700 x 503 x 1124	680 x 333 x 860	700 x 288 x 812	700 x 326 x 930	697 x 455 x 1180
Cooling Method	No Air Duct	Liquid Cooling system with dust-preventing electrostatic filter.	Liquid Cooling inside, aircooling with dust-preventing electrostatic filter	No Air Duct	Liquid: Air and liquid cooling inside	Circulating air cooling system, external chiller	Liquid Cooling inside

	NC1802ML	NC2002ML	NC2402ML	NC2443ML	NC3541L	NC3540LS
Order Code	40001312	40001313	40001314	40001392	60004089	60004087
Components	Projector Head NP-02HD Laser Light Source NP-18LU01	Projector Head NP-02HD Laser Light Source NP-20LU01	Projector Head NP-02HD Laser Light Source NP-24LU01	Projector Head NP-42HD Laser Light Source NP-24LU03	-	-
DMD	DC Chip DLP Technology	DC Chip DLP Technology	DC Chip DLP Technology	DC Chip DLP Technology	DC Chip DLP Technology	DC Chip DLP Technology
Screen Sizes (m)	up to 19	up to 20	up to 22	up to 22	up to 32	up to 28
Light Source	Laser Phosphor	RB Laser	RB Laser	RB Laser	RB Laser	RGB Laser
Contrast Ratio (full on/off)	> 2000:1	> 2000:1	> 2000:1	> 2000:1	> 2000:1	> 2000:1
DMD Specifications	Chip: 0.98" DC2K	Chip: 0.98" DC2K	Chip: 0.98" DC2K	Chip: 0.98" TRP 4K DLP	4K, 1.38" DC4K	4K, 1.38" DC4K
Primary Lenses	1.2 to 1.81:1 zoom; 1.4 to 2.05:1 zoom; 1.59 to 2.53: 1 zoom; 1.9 to 3.25: 1 zoom; 2.4 to 3.9: 1 zoom; 3.9 to 6.52: 1 zoom	1.2 to 1.81:1 zoom; 1.4 to 2.05:1 zoom; 1.59 to 2.53: 1 zoom; 1.9 to 3.25: 1 zoom; 2.4 to 3.9: 1 zoom; 3.9 to 6.52: 1 zoom	1.2 to 1.81:1 zoom; 1.4 to 2.05:1 zoom; 1.59 to 2.53: 1 zoom; 1.9 to 3.25: 1 zoom; 2.4 to 3.9: 1 zoom; 3.9 to 6.52: 1 zoom	1.2 to 1.81:1 zoom; 1.4 to 2.05:1 zoom; 1.59 to 2.53:1 zoom; 1.9 to 3.25:1 zoom; 2.4 to 3.9:1 zoom; 3.9 to 6.52:1 zoom	1.13 to 1.66:1 zoom; 1.3 to 1.85:1 zoom; 1.45 to 2.17:1 zoom; 1.63 to 2.71:1 zoom; 1.95 to 3.26:1 zoom; 2.71 to 3.89:1 zoom	1.13 to 1.66:1 zoom; 1.3 to 1.85:1 zoom; 1.44 to 2.16:1 zoom; 1.63 to 2.71:1 zoom; 1.95 to 3.26:1 zoom; 2.71 to 3.89:1 zoom
Dimension (W x H x D) [mm]	697 x 510 x 1337	697 x 510 x 1337	697 x 510 x 1337	697 x 510 x 1,095	697 x 455 x 1180	666 x 364 x 737
Cooling Method	Circulating air cooling system Liquid Cooling inside	Circulating air cooling system Liquid Cooling inside	Circulating air cooling system Liquid Cooling inside	Circulating air cooling system; Liquid Cooling inside	Liquid Cooling inside, air cooling with dust-preventing electrostatic filter	Liquid Cooling inside, air cooling with dust-preventing electrostatic filter, external chiller

Software



NaViSet Administrator 2

An essential tool for large estates, the all-in-one NaViSet Administrator 2 software enables IT administrators to remotely manage their network of NEC display devices and Windows PCs. In multi-device environments, this system simplifies the handling and control of devices helping to keep maintenance costs low, minimise downtime and ensure the efficient use of resources.



ProAssist

Where projected images appear side-by-side or overlap, even imperceptible misalignments in colour and brightness become jarringly apparent. Making manual adjustments to individual projectors is difficult, yet with ProAssist, each projector is fine-tuned via the network to produce a single homogeneous result.

ProAssist manages the settings for colour uniformity, colour gamma, lens control as well as edge blending in one single application.



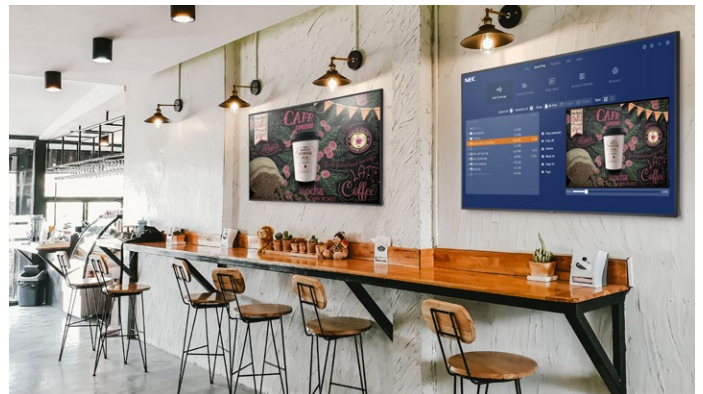
Hiperwall

The IP based video wall content and source management software is the preferred choice for mission critical applications such as control rooms to visualise vast amounts of information from multiple data sources via video walls, projection, large format displays and LED walls. Highest flexibility allows the operator to manipulate and visualise crucial real-time content.



NEC MediaPlayer

Straight out of the box, this modular SoC MediaPlayer powered by Raspberry Pi provides an intuitive plug & play digital signage solution. Creating and scheduling content for visual experiences in retail, leisure, transport, QSR or for corporate information has never been so simple to manage. Embedded within NEC's OMP signage displays, it drives content to a single display or to multiple displays across a network. Direct access to additional apps such as streaming, HTML5 browser, network storage or other content management systems completes this powerful offering.



SpectraView® II

The Calibration and Profiling applications provide a highly accurate, reliable and repeatable hardware colour management set. Designed for creative professionals using colour-accurate applications, SpectraView II and SpectraView Profiler software is designed for NEC PA Series desktops as well as the NEC large format UHD monitors.



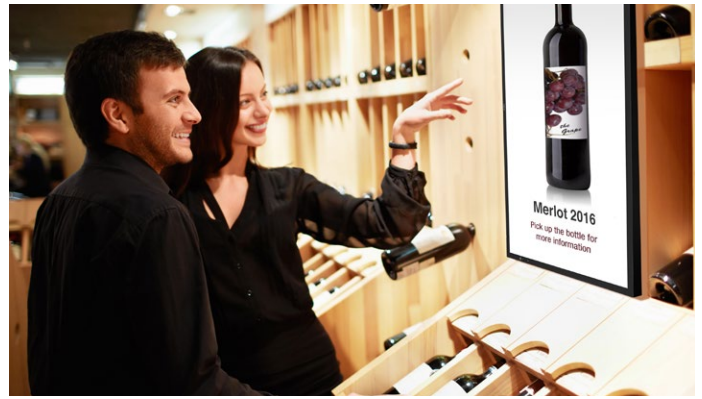
NEC Display Wall Calibrator

Ensuring multiple display configurations deliver impactful viewing experiences, the NEC Display Wall Calibrator software adjusts colours and brightness of a whole video wall. The NEC colorimeter measures all relevant colour characteristics to achieve a perfectly matched result across all screens to ensure uniformity and the impression of one single digital canvas.



Leafengine

Context-aware signage enhances engagement and boosts buying rates and sales success through smarter, more tailored advertising and customer interaction. This IoT middleware is the interface facilitating the integration of a variety of sensors into a signage system, making signage more intelligent and personalised, thus maintaining customer focus and attention.



Mosaic Connect

A wireless presentation tool that is simple, smart and secure. With Mosaic Connect multiple presenters can wirelessly share content from any device to the NEC InfinityBoard. It works securely with any network configuration, including corporate Wi-Fi, guest Wi-Fi, mobile data, a hotspot or any combination. In addition every Mosaic Connect meeting is protected by a unique ID, 4-digit PIN and is encrypted end to end.



Quicklaunch™ Ultimate Edition

Quicklaunch™ is a simple and secure meeting room interface that provides multi-platform integration to transform your NEC InfinityBoard into a one-click meeting space. Easily launch and control any meeting - just "One Touch" to join meetings, collaborating, share devices and more. Features like room reset and lockdown mode make it a secure solution for IT and end users. The customisable user interface includes the possibility of changing logos, colours, action tiles.



FlatFrog Board

Free NEC Pro Bundle of FlatFrog Board available for all NEC InGlass™ touch displays. FlatFrog Board is a new collaborative whiteboard that turns ordinary meetings into productive collaboration sessions. FlatFrog Board 3-in-1 meeting solution is equipped with a digital WHITEBOARD, SCREENSHARE capabilities and remote COLLABORATION*.



* Remote collaboration functionality is only available with FlatFrog Board Business edition.

Service Plus



A commitment to quality

Sharp NEC Display Solutions has built a world-renowned reputation developing Display Solutions that offer the ultimate in quality, performance and longevity. We have become recognised for professional performance and our product philosophy has enabled Sharp/NEC to become a leading name in the Finance, Transportation, Colour, Corporate, Healthcare, Retail, Education and Cinema sectors.

Sharp/NEC Service Plus takes that philosophy further for the entire sales cycle from pre-sales through to the replacement phase. We take the guessing out of installing and managing a Display Solution inventory over a standard or extended lifecycle. Our customers can concentrate on their business activities, confident that their IT infrastructure is underwritten by the serviceplus promise.

For more detailed information please visit:

www.sharpnecdisplays.eu

The Service Plus Offering *

- 5 years warranty extension
- Ad hoc warranty extension
- 24/7 for selected displays and projectors
- De-/Re-install service



* These services can be purchased with the main unit



POPPYS
LADIESWEAR

POPPYS

POPPYS



This document is © Copyright 2021 Sharp NEC Display Solutions Europe GmbH. All rights are reserved in favour of their respective owners. The document, or parts thereof, should not be copied, adapted, redistributed, or otherwise used without the prior written permission of Sharp NEC Display Solutions Europe GmbH. This document is provided "as is" without warranty of any kind whatsoever, either express or implied. Errors and omissions are excepted.

Sharp NEC Display Solutions Europe GmbH may make changes, revisions or improvements in, or discontinue the supply of any product described or referenced in this document at any time without notice.

www.sharpeddisplays.eu

Distributed by:

Document Name: Sharp/NEC Product Overview
Document Revision: Edition 32, 2021
Document Date: 06/21

SHARP / NEC