

# ERASER

*Always Moving Forward®*



## Quality Industrial Solutions in Wire, Cable and Tube Processing

Wire & Cable Strippers  
Wire, Cable & Tubing Cutters  
Wire Twisters  
Infrared Heating Equipment  
Reelers, Dereelers & Winders  
Measuring Tools  
FybRglass® Erasers



info@eraser.com | (315) 454-3237 | www.eraser.com



Eraser Executive Board: **Renate BeVard** (Chairman), **Marcus BeVard** (President/CEO), **Courtney BeVard** (Operations Analyst)

## Our History

The Eraser Company, Inc. was founded in 1911, when Joseph Rush patented the innovative FybRglass® Eraser, which remains today as one of the many products manufactured and sold to customers around the world. Over time, uses for this versatile tool evolved to include the wire stripping preparation of magnet wire and electrical components, which opened a new field of opportunities for The Eraser Company, forever changing the Company's past and its future.

The Eraser Company built a solid reputation as a global leader in the field of reliable and high-quality wire processing by developing and/or acquiring the following brands and product lines: Wybar® Electronics Division (electronic component lead forming); Glo-Ring® & Luxtherm® Divisions (infrared heat shrinking/curing tools); Power Brush® wire wheels (magnet wire stripping); RemarCable® series (coaxial/semi-rigid cable stripping); the AB and WC series cutting machines (automatic wire and tube cut-to-length machines).

Adding to this esteemed collection of offerings is its newest and most versatile product series to date: The patented M700 Modular series. This platform provides complete scalability and flexibility in material processing by allowing the user to easily interchange units in and out of the system.

The company has simultaneously built on its reputation as a globally recognized innovator and manufacturer of the highest quality industrial products as well as its excellence in customer service. As a validation of these strengths, The Eraser Company became an ISO9001 registered manufacturer in 1996, a designation which has been maintained to the present day.

## Our Future

Today, Eraser continues to provide superior industrial processing solutions to a broad customer base around the world. We are eager for the many new and exciting opportunities on the horizon. In the coming years we will continue to introduce state-of-the-art equipment to the market.

## President's Message

The Eraser Company has a profound and meaningful history and a bright, exciting future. For over 110 years, we've fostered a culture of learning, discovery, and personal growth, which has enabled us to develop the expertise and tools vital to the success of our customers.

Our pursuit of excellence enables our customers to continue to experience the same superior service and quality products they have come to expect from The Eraser Company. As an Eraser customer you are a partner in shaping our future. As we look toward the future together, keep an eye out for more new and exciting innovations from Eraser that meet the needs of a modern wire, cable, and tube processing environment.

Thank you for your business,

A handwritten signature in black ink, appearing to read 'M. BeVard'.



*Always Moving Forward®*

Thank you for your interest in The Eraser Company!  
Find our most popular categories here:

<b>M700 Modular Series Wire and Tubing Cutters.....</b>	<b>3 - 4</b>
<b>Cleaning and Burnishing Brushes .....</b>	<b>5</b>
<b>Wire, Cable &amp; Tubing Cutters .....</b>	<b>6 - 10</b>
Parts for Wire, Cable & Tubing Cutters.....	10
<b>Reelers, Dereelers, Winders &amp; Measuring Meters.....</b>	<b>11 - 14</b>
<b>Wire &amp; Cable Strippers .....</b>	<b>15 - 29</b>
Coaxial Wire & Cable Strippers .....	15
Extruded Wire & Cable Strippers.....	16 - 18
Magnet/Enamel Wire Strippers .....	19 - 24
Parts Specified for Wire & Cable Strippers .....	25 - 29
<b>Infrared Heating Equipment .....</b>	<b>30 - 31</b>
<b>Wire Twisters .....</b>	<b>32 - 33</b>
<i>Cutter Head Assignment Form (for Coaxial Cable Cutters).....</i>	<i>34</i>
<i>Eraser Certification Program (E.C.P.) Form.....</i>	<i>35</i>





## M700 Modular Series

The M700 Modular Series is a convenient concept in wire and tube processing. With the modular design, you can quickly switch between wire, small tube and large tube processing.

The M700 Modular Series is a compact table top system designed to cut various wire and tubing material to repeatable accurate lengths by using a choice of multiple style cutting modules that can be used with or without the feeder module.



### M700C - Modular Series Controller



#### Specifications

Max. material size .....	1-1/8" OD (28.6 mmø)
Max. cut length .....	99,999" (99,999cm)
Min. cut length .....	0.1" (.254cm)
Tolerance (w/ M700F) .....	+/- .005" (0.13mm)
Dependent on material and dereeling system	
Dimensions .....	16"L x 9.5"W x 8"H
	(406.4mm x 241.3mm x 203.2mm)
Weight .....	14.5 lbs. (6.6kg)

#### Ordering Information

AR3300 (M700C) .....	100V - 240VAC @ 50/60Hz
Optional Foot Switch .....	IR3323
Optional Job Manager Software Application .....	IR3325
Optional Feeder .....	M700F (AR3400) Feeder

### M700F - Modular Series Feeder



#### Specifications

Max. material size .....	1-1/8" OD (28.6 mmø)
Max. programmable Qty .....	99,999
Tolerance .....	+/- .005" (0.13mm)
Dependent on material and dereeling system	
Module Dimensions .....	16"L x 7.25"W x 8"H
	(406.4mm x 184.2mm x 203.2mm)
Weight .....	21.25 lbs. (9.7kg)

#### Ordering Information

AR3400 (M700F) .....	<b>Requires M700C Controller</b>
<b>Required Bushings for M700F</b> .....	IR3447
Replacement Feed Belt .....	PR1029
Optional Material Length Stop .....	IR3324









### LFTC1 Large Flexible Tubing Cutter



Designed to cut material such as tygon, radiator hose, flexible PVC, polyurethane, silicone, nylon PTFE, FEP and PFA to length, this cutter is the perfect tool for large flexible tube cutting.

#### Specifications

Material size ..... 2 1/8" to 1/2"  
(54mm - 12.7mm)  
Max. cut length ..... unlimited  
Min. cut length ..... 2.00" (50.8mm)

#### Ordering information

AR1431 (LFTC1) ..... 120V, 60Hz  
IR1817 ..... Bushing Set  
IR1819 ..... Cutting Blade  
PR1026 ..... Flat Belt

### RTC1 Rigid Tubing Cutter



Designed to cut material such as copper, aluminum and mild steel, this cutter is the perfect tool for rigid tube cutting.

#### Specifications

Max. Material size ..... 7/16" OD (11.1mm)  
Min. Material size ..... 1/8" ID (3.18mm)

Max. cut length ..... unlimited  
Min. cut length ..... 2.00" (50.8mm)

#### Ordering information

AR1411 (RTC1) ..... 120V, 60Hz  
IR1832 Cutting Discs ..... 2 Required per Machine  
IR1809 ..... Bushing Set  
PR1026 ..... Replacement Drive Belt

### FTC1 Flexible Tubing Cutter



Designed to cut material such as tygon, radiator hose, flexible PVC, polyurethane, silicone, nylon PTFE, FEP and PFA to length, this cutter is the perfect tool for flexible tube cutting.

#### Specifications

Material size ..... 1 1/8" to 1/4"  
(28.6mm - 6.4mm)  
Max. cut length ..... unlimited  
Min. cut length ..... 2.00" (50.8mm)

#### Ordering information

AR1421 (FTC1) ..... 120V, 60Hz  
IR1807 ..... Bushing Set  
IR1296 ..... Cutting Blade  
PR1026 ..... Flat Belt





### WC302 Auto Wire & Tube Cutter



Fully programmable, fully electric benchtop wire & tube cutter. With programmable batching and nine variable feed rates, the WC302 is the perfect production tool for complete automation.

#### Specifications

Max. material size ..... Tubing: 0.281" OD (9/32) (.713cm)  
 Wire: 12 AWG (.233cm) (stranded) or 14AWG (.162cm) solid  
 Max. cut length ..... 99,999" (or 99,999cm)  
 Min. cut length ..... 0.050" (.127cm)  
 Tolerance ..... At cut lengths under 2" on most materials, the tolerance is  $\pm 0.01"$  (.025cm). All other cut length tolerances are 1% or better dependent on material and feed.  
 Programmable length compensation of  $\pm 99%$  is built into the unit to accommodate unusual materials.  
 Batching ..... Up to 99 programmable

#### Ordering information

AR7211 (WC302) ..... Wire & Tube Cutter 120V, 60HZ

### CS800 Automatic Cutter & Stripper



Fully programmable, fully electric benchtop wire cut & strip. With programmable batching and ten variable feed rates, the CS800 is the perfect production tool for complete automation.

#### Specifications

Max. material size ..... 10AWG (2.58mm)  
 Min. material size ..... 30AWG (.25mm)  
 Max. cut length ..... 65,530 inches, 99,999cm  
 Min. cut length ..... 0.1" (2.54mm)  
 Max. strip length Up to 4.0 inches (10.2cm)-wire dependent  
 Min. cut length ..... 0.01" (2.54mm)  
 Tolerance ..... Up to 1% - wire dependent  
 Batching ..... 67 batches

#### Ordering information

AR7201 (CS800) ..... Wire Cut & Strip 120V  
 IR1791 ..... .035 ID bushings  
 IR1792 ..... .047 ID bushings  
 IR1797 ..... .057 ID bushings  
 IR1793 ..... .098 ID bushings  
 IR1794 ..... .116 ID bushings  
 IR1798 ..... .151 ID bushings  
 IR1799 ..... .203 ID bushings  
 IR1795 ..... .250 ID bushings

### MMC71 Multi-Material Cutter



A versatile cutter for flat material up to 3.3" wide, tubing up to 3/16" OD, and wire up to 14 AWG stranded or 16 AWG solid.

#### Specifications

Max. material size ..... 0.1875" (4.76mm) thick  
 3.3" (84mm) wide, 14 AWG (1.63mm) stranded,  
 16 AWG (1.29mm) solid  
 Max. cut length ..... 99,999" (99,999cm)  
 Min. cut length ..... 0.100" (.25cm)  
 Tolerance ..... +/- 0.005" (0.13mm) to 5% of total length  
 dep. on material and dereeling system  
 Batching ..... up to 99 programmable batches  
 Kits ..... up to 10 kits (depending available memory)

#### Ordering information

AR0071 (MMC71) ..... 120V 60Hz



**WC302 Auto Wire & Tube Cutter**

*Optional accessories:*

- IR5171 .....Optional Urethane Drive Roller
- TR5169 .....Optional Knurled Drive Roller

**CS800 Automatic Cutter & Stripper**

*Optional accessories:*

- IR1787 ..... Carbide V Blades
- AR3950 ..... WS1 Wire Straightener for material up to 3/8" (9.5mm)

**RTC1 Rigid Tubing Cutter**

*Optional accessories:*

- TR0176 .....length stop rod

**FTC1 Flexible Tubing Cutter**

*Optional accessories:*

- TR0176 .....length stop rod

**LFTC1 Flexible Tubing Cutter**

*Optional accessories:*

- TR0176 .....length stop rod

**WC601A Wire & Tubing Cutter**

*Bushing sets:*

- IR0755 ..... for up to 1/8" OD (3.17mmø) material [actual size is 0.156" (3.96mm)]
- IR0756 ..... for up to 1/4" OD (6.35mmø) material [actual size is 0.281" (7.14mm)]
- IR0757 .....for up to 3/8" OD (9.5mmø) material [actual size is .406" (10.3mm)]
- IR0763 .....for 1/8" - 3/8" (3.175mmø - 9.525mmø), send material for sizing
- IR0764 .....for 1/16" - 1/8" (1.60mmø-3.175mmø), send material for sizing
- IR0765 ..... for 1/32"-1/16" (0.793mmø-3.175mmø), send material for sizing

Eraser offers reelers, dereelers, winders and measuring tools for a broad range of wire and cable handling needs. Manual, motorized or compensating reelers and dereelers and measuring tools work with Eraser cable processing units to provide complete combinations of material handling equipment.

### CW10 Small Reeler and Dereeler



A collapsible reeler with friction clutch for a variety of wire and cable also dereels hanks or coils of material by reversing the reeling operation.

#### Specifications

Coil Dimension:  
Inside Diameter Variable 5" (127mmø) to 12" (305mmø)  
Unit may be set and locked for a specific diameter  
Capacity:  
Length Up to 1000' (305M) of 1/8" (3.18mmø) diameter wire or equivalent.  
Weight of Coil 55 lbs. (25 Kg) maximum

#### Ordering information

AR6001 (CW10) ..... Small Reeler and Dereeler  
*Optional Parts*  
IR0491 (Bench Stand)..... For use with reelers, dereelers and measuring meters  
IR0492 (Floor Stand) ..... For use with reelers, dereelers and measuring meters

### CW20 Medium Reeler and Dereeler



The unit has a friction clutch, making it ideal for dereeling, measuring, cutting and reeling operations by production kitters, jobbers, and electrical contractors.

#### Specifications

Coil Dimension:  
Inside Diameter Fixed at 12" (305mmø)  
Outside Diameter Variable up to 21" (419mmø)  
Width of Coil:  
At Inside Diameter Up to 3 1/2" (89mm)  
At Maximum Outside Diameter Up to 7 1/2" (191mm)  
Capacity:  
Length Up to 1200' (366M) of 1/4" (6.35mmø) diameter wire or equivalent.  
Weight of Coil 60 lbs. (27.3 Kg) maximum

#### Ordering information

AR7001 (CW20) ..... Medium Reeler and Dereeler  
*Optional Parts*  
IR0491 (Bench Stand)..... For use with reelers, dereelers and measuring meters  
IR0492 (Floor Stand) ..... For use with reelers, dereelers and measuring meters



### Measuring Meters



Designed to measure long lengths of wire, cable, flat cable and other flexible material, a digital counter records the amount of measured material.

#### Specifications

Measure rates ..... up to 1,000 feet (305M) per minute  
 Material size ..... Flexible material from 1/64" (0.40mm) to 2" (50.8mm) dia. or width  
 Readout ..... feet and inches to 9,999'11" or meters and 1/10 meters to 9,999.9M  
 Accuracy ..... ±.5% depending on material and feed

#### Ordering information

AR0610 (WMI) ..... Measuring meter (feet/inches) steel rollers  
 AR0630 (WMIU) ..... Measuring meter (feet/inches) urethane rollers

#### Optional Parts

IR0491 ..... bench stand  
 IR0492 ..... adjustable floor stand

### DE700 Compensating Dereeler



By providing fine adjustment control on the reel payout tension, this compensating dereeler prevents material overruns when used with wire cutters or cut and strip machines.

#### Specifications

Max. reel diameter ..... 16-1/2" OD (419mmø)  
 Max. reel weight ..... 100 lbs. (45Kg)  
 Reel hub diameter ..... 5/8" to 1-7/8" (16mm to 48mmø)  
 Max. reel width ..... 10-1/4" (260mm)

#### Ordering information

AR0170 (DE700) ..... Compensating dereeler

### DE600 & DE600M Dereeler & Winder



When motorized, the reeler easily reels wire or cable without operator fatigue, or dereels large amounts of wire or cable with no pulling. A handle enables manual reeling and dereeling.

#### Specifications

Max. reel width ..... 15" (381mm)  
 Max. reel dia ..... 29" OD (737mmø)  
 Reel arbor diameter ..... 3/4" to 2-1/8" (19mmø to 54mmø)

#### Ordering Information

AR5600 (DE600) ..... Manual dereeler and winder  
 AR5701 (DE600M) ..... Motorized dereeler and winder, 120V 60Hz

### DE400 Bench Mounted Dereeler



Bench mounted, this unit adjusts for reel hub diameter for various sizes up to 50lb.

#### Specifications

Max. Reel dia ..... 19" (483mmø)  
 Max. Reel width ..... 6" (152mm)  
 Min. Reel hub dia ..... 11/16" (17.5mmø)  
 Max. Reel hub dia ..... 6" (152mmø)  
 Max. reel weight ..... 50 lbs. (23 Kg)  
 Overall Size ..... 13" x 10" x 6"  
 (330mm x 254mm x 152mm)  
 Weight ..... 10 lbs. (4.5 kg)

#### Ordering information

AR3801 (DE400) ..... Reeler and dereeler  
 Optional Parts  
 IR0491 ..... Bench stand  
 IR0492 ..... Floor stand  
 TR4400 ..... Extension Kit  
 Extends Reel width from 6"(152mm) to 10"(254mm)

### DE100 Turntable Dereeler



The single station turntable will accommodate a reel up to 100 lbs. (45 Kg).

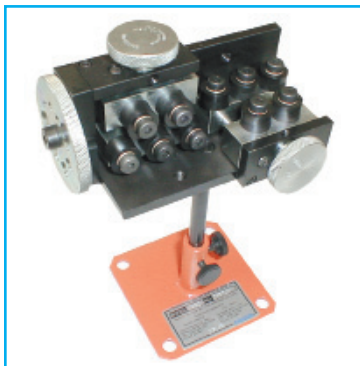
#### Specifications

Turntable Diameter ..... 8" (203mm $\phi$ )  
 Overall Size ..... 9" x 10-1/2" (229mm x 267mm)  
 Max. reel weight ..... 100 lbs. (45 Kg)

#### Ordering information

AR0010 (DE100) ..... Single Station Dereeler

### Wire Straightener



This unit is for use with all wire cutters, or it can be used separately. The maximum opening between rollers is 3/8" (9.5mm)

#### Specifications

Wire Sizes...  
 Maximum opening between the straightening rollers is 3/8" (9.5mm). Wire size is dependent on flexibility and degree of straightness.  
 Minimum opening between the straightening rollers is zero  
 Size ..... 5-3/8" x 3-3/8" x 2-3/4" (136mm x 85mm x 70mm)  
 Weight ..... 3 1/4 pounds

#### Ordering information

AR3950 (WS1) ..... Wire Straightener



## Extruded Wire & Cable Strippers

### CS800 Automatic Cutter & Stripper



Fully programable, fully electric benchtop wire cut & strip. With programmable batching and ten variable feed rates, the CS800 is the perfect production tool for complete automation.

#### Specifications

Max. material size ..... 10AWG (2.58mm)  
 Min. material size ..... 30AWG (.25mm)  
 Max. cut length ..... 65,530 inches, 99,999cm  
 Min. cut length ..... 0.1" (2.54mm)  
 Max. strip length Up to 4.0 inches (10.2cm)-wire dependent  
 Min. cut length ..... .01"(2.54mm)  
 Tolerance ..... Up to 1% - wire dependent  
 Batching ..... 67 batches

#### Ordering information

AR7201 (CS800) ..... Wire Cut & Strip 120V  
 IR1791 ..... .035 ID bushings  
 IR1792 ..... .047 ID bushings  
 IR1797 ..... .057 ID bushings  
 IR1793 ..... .098 ID bushings  
 IR1794 ..... .116 ID bushings  
 IR1798 ..... .151 ID bushings  
 IR1799 ..... .203 ID bushings  
 IR1795 ..... .250 ID bushings

### C100S Rotary Wire Stripper



This unit features convenient adjustment knobs for strip length and blade depth adjustments that are easily made while this wire stripper and twister is running.

#### Specifications

Max. wire size over insulation ..... 0.228" OD (5.79mmø)  
 Min. wire size over insulation ..... 0.031" OD (0.079mmø)  
 Max. strip length ..... 1-1/2" (38mm)  
 Min. strip length with standard strip length stop ..... varies from 3/16" (4.7mm) on a 28 AWG (0.33mmø) wire to 5/16" (7.9mm) on a 14 AWG (1.63mmø) wire

#### Ordering information

AR2171 (C100S) ..... 120V 60Hz  
 See page 26 for wire guide selection and optional parts.

### C200 & C300 Wire Strippers



Strips most insulation from solid and stranded wires, Teflon, P.T.F.E., PVC, nylon, rubber, KEL-F, miniature coax, coaxial cables, shielded wires and cables.



#### Specifications

Max. wire size over insulation ..... 0.265" OD (6.73mmø)  
 Min. wire size over insulation ..... 0.028" OD (0.071mmø)  
 dep. on wire rigidity  
 Max. conductor dia ..... 0.219" OD (5.5mmø)  
 Max. strip length (w. strip stop) ..... 2-1/2" (63.5mm)  
 Max. strip length (w/o strip stop) ..... dep. on wire or cable  
 Min. strip length. 1/32" (.79mm), dep. on insulation thickness

#### Ordering information

AR4901 (C200) ..... single head stripper, 120V 60Hz  
 AR9501 (C300) ..... triple head stripper, 120V 60Hz

See page 26 for wire guide selection and optional parts.



## LS10 & LSR10 Cable Strippers



Hand operated with blades that are quickly changed and adjusted, these strippers provide a clean strip in one simple motion.

### Specifications

Max. diameter of conductor (all)..... 1.120" OD (30.5mmø)  
 Max. diameter of jacket (LS10) ..... 1.25" OD (31.8mmø)  
 Max. diameter of jacket (LSR10) ..... 1.06" OD (26.9mmø)  
 Max. strip length\*(all)..... 3 3/8" (86.4mm)

### Ordering information

AR0240 (LS10) .....standard cable clamps  
 AR0260 (LSR10) .....rubber covered cable clamps  
 to prevent marking the cable  
 See page 25 for die blade selection.

*\*Strip length maximum is for one cycle of the machine. Dependent on cable type and size, strip length may be increased by cycling the machine more than once.*

## LSA20 & LSAR20 Cable Stripper



These air-operated units are for precise wire and cable stripping, with blade options available to cover most applications.

### Specifications

Max. diameter of conductor ..... 1.20" OD (30.5mmø)  
 Max. diameter of jacket..... 1.25" OD (31.8mmø)  
 Max. strip length\* ..... 3 3/8" (86.4mm)  
 Operation ..... air operated, 90 P.S.I.

### Ordering information

AR6800 (LSA20)..... standard serrated cable clamps  
 AR6700 (LSAR20)..... with rubber covered cable clamps  
 to prevent marking the cable

### Optional Parts

PR0003 ..... air filter, regulator and lubricator  
 PR3623 ..... six-foot air hose with quick disconnect  
 See page 25 for die blade selection.

*\*Strip length maximum is for one cycle of the machine. Dependent on cable type and size, strip length may be increased by cycling the machine more than once.*

### BTS1 Thermal Wire Stripper



With a variable temperature setting, this stripper is ideal for use on solid and stranded wires, and small cables.

#### Specifications

Wire size ..... up to 1/2" OD (12.7mmø)  
 Min. wire size..... 36 AWG (0.13mmø)  
 Max. strip length ..... 1-1/2" (38mm),  
 or unlimited with optional 90° element adapters

#### Ordering information

AR0111 (BTS1) ..... 120V 60Hz

#### Optional Parts

IR1479 ...right angle adaptor kit for unlimited strip lengths  
 IR1473 ..... one pair of replacement elements  
 IR1474 ..... small die element set (.050", .080", .102" dia.)  
 IR1475 ..... large die element set (.120", .140", .160" dia.)  
 IR1491 ..... foot switch  
 AA0020 ..... Coarse Eraser Brush to clean elements

### HTS1 Thermal Wire Stripper



Lightweight, hand-held tools are cradle activated with low cost replaceable elements.

#### Specifications

Wire size (HTS1) ..... 5/16" to 43AWG (7.9 - 0.056mmø)  
 Strip length ..... up to 1" (25.4mm)

#### Ordering information

AR0131 (HTS1C) ..... Cradle activated, 120V 50/60Hz

All units have IR5023 un-notched elements installed  
 See page 25 for elements and optional parts.

**Magnet/Enamel Wire Strippers**

**L2AS Bench Wire Stripper**



For fast, clean removal of most film insulation from round wire, including enamel, Formvar, ML, armored polythermaleze, and epoxy.

**Specifications**

Wire size ..... 8 to 4 AWG (3.25mm to 5.18mmø)  
Max. strip length ..... 1-1/2" (38mm),  
1-5/16" (33.3mm) with strip length stop

**Ordering information**

AR2071 (L2AS) ..... 120V 60Hz

See page 27 for insert selection.

**L2S Bench Wire Stripper**



In addition to removing film insulation, the L2S can deflash wires and clean pins on transformers and coils.

**Specifications**

Wire size ..... 29 to 8 AWG (0.28mm to 3.25mmø)  
Max. strip length ..... 3-1/2" (89mm),  
1-5/16" (33.3mm) with strip length stop  
Component lead diameter ..... 0.0112" to 0.114" OD  
(0.28mm to 2.90mmø)  
Max. cleaning length ..... 2-1/2" (63.5mm)  
Close-up cleaning ..... flush with component body or  
length stop permits precise cleaning of only part of lead

**Ordering information**

AR2051 (L2S) ..... 120V 60Hz

See page 27 for insert selection.

### RT2S Magnet Wire Stripper



In addition to insulation stripping, the RT2S can clean and remove oxidation from leads as small as 0.001" in diameter.

#### Specifications

Max. wire size ..... 28 AWG (0.33mm $\phi$ )  
 Min. wire size ..... 48 AWG (0.03mm $\phi$ )  
 Strip length ..... unlimited  
 Close-up stripping ..... within 1/8" to 3/16"  
 (3.2mm to 4.76mm) dep. on size of coil body  
 Component lead diameter ..... 0.0012" to 0.013" OD  
 (0.03 to 0.33mm)  
 Component lengths ..... infinite, will clean to within  
 1/8" (3.2mm) of component body

#### Ordering information

AR0221 (RT2S) ..... 120V 60Hz  
 See page 28 & 29 for wheel selection.

### DCF Multi-voltage Wire Strippers



These variable-speed units are ideal for production and repair stripping of armatures, coils, chokes, transformers, relays, and solenoids.

#### Specifications for DCF1, DCF2/3, DCF4

Model ..... Wire size  
 DCF1 ..... 35 to 15 AWG (0.14mm to 1.45mm $\phi$ )  
 DCF2/3 ..... 32 to 12 AWG (0.20mm to 2.06mm $\phi$ )  
 DCF4 ..... 29 to 9 AWG (0.28mm to 2.90mm $\phi$ )  
 Strip length  
 without strip length stop ..... 0 to 2-1/2" (64mm)  
 with strip length stop ..... 3/32" to 1-9/16"  
 (2.38 to 39.69mm)  
 with motor armature drilled ..... infinite  
 max. wire size 13 AWG (1.83mm $\phi$ )  
 Power source ..... multi-voltage 120/220/240V 50/60Hz

#### Ordering information for DCF1

AR4500 (DCF1) ..... stripper, drilled multi-volt power unit  
 AR4501 (DCF1) ..... stripper, multi-voltage power unit  
 AR4300 (DCF2/3) ..... stripper, drilled, multi-volt power unit  
 AR4301 (DCF2/3) ..... stripper, multi-voltage power unit  
 AR4400 (DCF4) ..... stripper, drilled multi-volt power unit  
 AR4401 (DCF4) ..... stripper, multi-voltage power unit

IR7000 ..... multi-voltage power unit and bench holder only

### DCFR Stripper for Magnet Wire



Uses a rotating carbide rasp head to strip square, rectangular, flat magnet or enamel wire insulation.

#### DCFR Specifications

DCFR Single Voltage Units ..... Wire sizes  
 Wire size ..... Strip to max. square section 3/4" (19mm)  
 Strip length ..... unlimited  
 DCFR Power source ..... multi-voltage 120/220/240V  
 50/60Hz

#### Ordering information for DCFR

AR4801 (DCFR) ..... stripper, with multi-voltage power supply unit

**DSP2 STRIPPING POTS**



The temperature control feedback offers precise settings for critical stripping applications and repeatability.

**Optional Parts for DSP2**

- \* BR1301 ..... Dip Strip, 2 lb. bag (908g)
- \* BR1302 ..... Dip Strip, 1 lb. bag (454g)
- BR1440 ..... Dip Clean 2, 1 pint
- BR1441 ..... Dip Clean 2, 1 gallon
- PR1403 ..... Dip Strip Neutralizer Kit
- TR1409 ..... Replacement Neutralizer for Kit 1 lb. bag (454g)

*\*Items are considered hazardous materials and must be shipped separately from other product orders.*

**Specifications**

- Stripping pot
  - Temperature range (model dependent) ..... 100° to 800°F (37.8° to 426.6°C) internal
  - Int. dimensions ..... 3" dia. (76.2mmØ) x 2-1/2" (57.1mm) deep
  - Overall size (vessel only) ..... 6" (152.4mm) high x 6-3/16" dia. (157.1mmØ)
- Dip strip
  - Melting temperature..... 500°F (260°C)
  - Normal use temperature..... 700° to 750°F (371° to 399°C)
  - Max. operating temperature..... 820°F (438°C)

**Ordering information**

- AR1221 (DSP2) 120V 50/60Hz, feedback temp. control
- AR1222 (DSP2) ..... 220/240V 50/60Hz, w/ feedback temp. control





## K8A Rotary Blade Stripper



The air-operated K8A uses a four-blade head to strip either extruded wires, or magnet and enamel wires.

### Specifications

Extruded wires and built-up insulation

Wire size ..... 38 to 8 AWG (0.10mm to 3.25mmØ)  
or up to 3/8" OD (9.5mmØ)

Strip length ..... up to 1-3/8" (34mm)

Film insulated and magnet wires

Wire size ..... 28 to 11 AWG (0.33mm to 2.31mmØ)

Strip length ..... up to 1-3/8" (34mm),  
infinite strip lengths possible if length stop is removed

### Ordering information

AR1641 (K8A)..... 120V 60Hz, 90 PSI

See page 26 for blade selection.

### L4 Portable Insert Wire Stripper



Removes most types of film insulation, these portable units allow close-up stripping flush to a coil body or bobbin.

#### L4 Specifications

Wire size (dependent on insert selected)  
 L4 ..... 29 to 8 AWG (0.28mm to 3.25mm)  
 Max. strip length ..... 3" (76.2mm)  
 no strip length stop available  
 Power ..... air operated

#### Ordering information

AR0180 (L4) ..... rotary stripper, 90 P.S.I.  
 PR3623 ..... Six-foot Air Hose with quick disconnect  
 See page 27 for insert selection.

### PD9 Portable Air-Operated Stripper



This compact, lightweight tool quickly strips film type insulation from round and rectangular wires.

#### Specifications

Wire size ..... 32 to 4 AWG (0.20 to 5.18mm)  
 Square & rectangular wire ..... up to 1/4" x 3/4"  
 (6.35mm x 19.05mm)  
 Strip length ..... unlimited  
 Hose ..... 6' (1.8M) of 3/8" OD (9.5mm) air hose  
 Power ..... 15,000 RPM, air motor  
 requiring up to 90 PSI at 32 CFM

#### Ordering information

AR4000 (PD9) ..... air operated stripper

#### Optional Parts

PR0003 ..... air filter, regulator and lubricator  
 See page 28 & 29 for wheel selection.

## Model 824

### Cutter head (one required)

RI3040	for use on single level semi-rigid
RI3041	for use on two level semi-rigid
RI3042	for use on single level coax
RI3043	for use on two level coax
RI3044	for use on two level coax (braid exposed)
RI3045	for use on three level coax
RI2047	for strip length of 0.070" (1.78mm) or less between blades
RI2056	for UV or V size hole

### Optional Parts

RI5000	additional standard battery w/o charger
RI2040	additional standard battery w/110V trickle charger
RI0056	AC to DC power supply 120V 60Hz
RI0057	AC to DC power supply 220/230V 50Hz, European plug
RP5710	trickle charger, 110V 60Hz
RP2036	trickle charger, European plug
RI0091	rapid charger, 110V 60Hz
RI6711	replacement blade
RI3339	replacement blade
RI6713	Set of 3 replacement blades

## Model 1256

### Cutter head (one required)

RI4040	for use on single level semi-rigid
RI4041	for use on two level semi-rigid
RI4042	for use on single level coax
RI4043	for use on two level coax
RI4044	for use on two level coax (braid exposed)
RI4045	for use on three level coax
RI2057	for strip length of 0.070" (1.78mm) or less between blades
RI2053	for UV or V size hole
RI1040	quick release coupling

### Optional Parts

RI6711	replacement blade
RI3339	replacement blade
RI6713	Set of 3 replacement blades

## HTS1 & HTS2 Thermal Wire Strippers

### Optional Parts

IR5023	replacement set un-notched elements
IR1399	small die element set (22, 24, 26, 28, 30AWG)
IR1405	large die element set (14, 16, 18, 20AWG)
AA0020	Coarse Eraser brush to clean elements

## LS10, LSR10, LSA20 & LSAR20

### Die blade selection (one required)

	<i>Diameter of die</i>
IR1702	parallel blades
IR1707	0.063-0.074" OD ( 1.60-1.88mmø)
IR1708	0.075-0.102" OD (1.91-2.59mmø)
IR1709	0.103-0.123" OD (2.62-3.12mmø)
IR1710	0.124-0.142" OD (3.15-3.61mmø)
IR1711	0.143-0.183" OD (3.63-4.65mmø)
IR1712	0.184-0.208" OD (4.67-5.28mmø)
IR1713	0.209-0.237" OD (5.31-6.02mmø)
IR1714	0.238-0.285" OD (6.05-7.24mmø)
IR1715	0.286-0.327" OD (7.26-8.31mmø)
IR1716	0.328-0.370" OD (8.33-9.40mmø)
IR1717	0.371-0.416" OD (9.42-10.57mmø)
IR1718	0.417-0.448" OD (10.59-11.38mmø)
IR1719	0.449-0.495" OD (11.40-12.57mmø)
IR1720	0.496-0.558" OD (12.60-14.17mmø)
IR1721	0.559-0.620" OD (14.20-15.75mmø)
IR1722	0.621-0.714" OD (15.77-18.14mmø)
IR1723	0.715-0.792" OD (18.16-20.12mmø)
IR1724	0.793-0.870" OD (20.14-22.10mmø)
IR1728	custom blade set

### Optional Parts

IR0658	table and clamp assembly
IR1507	length stop

## C100S

### Wire guide selection (one required)

	<i>Outside diameter of wire</i>
IR8701	0.233-0.216" (5.92-5.49mm)
IR8702	0.215-0.208" (5.46-5.28mm)
IR8704	0.203-0.201" (5.16-5.11mm)
IR8705	0.200-0.196" (5.08-4.98mm)
IR8706	0.195-0.191" (4.95-4.85mm)
IR8707	0.190-0.186" (4.83-4.72mm)
IR8708	0.185-0.181" (4.69-4.59mm)
IR8709	0.180-0.175" (4.57-4.45mm)
IR8710	0.174-0.168" (4.42-4.27mm)
IR8711	0.167-0.164" (4.24-4.17mm)
IR8712	0.163-0.156" (4.14-3.96mm)
IR8713	0.155-0.151" (3.94-3.84mm)
IR8714	0.150-0.144" (3.81-3.66mm)
IR8715	0.143-0.139" (3.63-3.53mm)
IR8716	0.138-0.135" (3.51-3.43mm)
IR8717	0.134-0.131" (3.40-3.33mm)
IR8718	0.130-0.120" (3.30-3.05mm)
IR8719	0.119-0.115" (3.02-2.92mm)
IR8720	0.114-0.111" (2.90-2.82mm)
IR8721	0.110-0.106" (2.79-2.69mm)
IR8722	0.105-0.101" (2.67-2.57mm)
IR8723	0.100-0.096" (2.54-2.44mm)
IR8724	0.095-0.091" (2.41-2.31mm)
IR8725	0.090-0.084" (2.29-2.13mm)
IR8726	0.083-0.077" (2.11-1.96mm)
IR8727	0.076-0.073" (1.93-1.85mm)
IR8728	0.072-0.068" (1.83-1.73mm)
IR8729	0.067-0.062" (1.70-1.57mm)
IR8730	0.061-0.057" (1.55-1.45mm)
IR8731	0.056-0.050" (1.42-1.27mm)
IR8732	0.049-0.041" (1.24-1.04mm)
IR8733	0.040-0.037" (1.02-0.94mm)
IR8734	0.036-0.034" (0.91-0.86mm)
IR8735	0.033-0.030" (0.84-0.76mm)
IR8736	0.029-0.026" (0.74-0.66mm)
IR8737	0.025-0.020" (0.64-0.51mm)

### Optional parts

IR8190	complete set of 37 wire guides in plastic box
IR4655	standard 50° blade with pivot pin
IR4660	blade for thin or film insulation
IR7978	special short blade for very fine fragile wires

## K8A

### Blade selection (one required)

IR0318	strips wire 38-8 AWG (0.10-3.25mmØ) for hard or thin insulation
IR0319	strips wire 11-15 AWG (2.31-1.45mmØ)
IR0321	strips wire 16-20 AWG (1.30-0.81mmØ)
IR0323	strips wire 25-28 AWG (0.46-0.33mmØ)
IR0324	... custom stripping blades, send material for sizing

### Optional Parts

PR0003	air filter, regulator and lubricator
--------	--------------------------------------

## C200 & C300

### Wire guide selection

	<i>Outside diameter of wire</i>
IR2301	0.022-0.020" OD (0.56-0.51mmØ)
IR2302	0.029-0.023" OD (0.74-0.58mmØ)
IR2303	0.036-0.030" OD (0.91-0.76mmØ)
IR2304	0.046-0.037" OD (1.17-0.94mmØ)
IR2305	0.056-0.047" OD (1.42-1.19mmØ)
IR2306	0.064-0.057" OD (1.63-1.45mmØ)
IR2307	0.072-0.065" OD (1.83-1.65mmØ)
IR2308	0.083-0.073" OD (2.11-1.85mmØ)
IR2309	0.095-0.984" OD (2.41-2.13mmØ)
IR2310	0.105-0.096" OD (2.67-2.44mmØ)
IR2311	0.119-0.106" OD (3.02-2.69mmØ)
IR2312	0.130-0.120" OD (3.30-3.05mmØ)
IR2313	0.143-0.131" OD (3.63-3.33mmØ)
IR2314	0.155-0.144" OD (3.94-3.66mmØ)
IR2315	0.167-0.156" OD (4.24-3.96mmØ)
IR2316	0.185-0.168" OD (4.70-4.27mmØ)
IR2317	0.199-0.186" OD (5.05-4.72mmØ)
IR2318	0.215-0.200" OD (5.46-5.08mmØ)
IR2319	0.228-0.216" OD (5.79-5.49mmØ)
IR2320	0.240-0.229" OD (6.10-5.82mmØ)
IR2321	0.251-0.241" OD (6.38-6.12mmØ)
IR2322	0.260-0.252" OD (6.60-6.40mmØ)

### Optional Parts

IR0085	Set of all 22 wire guides
IR8631	set of two replacement carbide blades
IR8632	set of six replacement carbide blades
IR0703	complete faceplate assembly
TR0705	replacement alignment tool for C200 and C300



## L2S, L2AS, L4 Insert Selection (one required per machine)

WIRE SIZE	HEAVY DUTY GRADE INSERTS			MACHINE USED ON
	Concave Face	Flat Face	Bullet Nose	
29-24 AWG (0.28-0.51mmø)	IR1951 (L30HC)	IR1961 (L30HF)	IR1981 (L30HB)	L2S, L4, IR0104
24-20 AWG (0.51-0.81mmø)	IR1952 (L35HC)	IR1962 (L35HF)	IR1982 (L35HB)	
20-16 AWG (0.81-1.30mmø)	IR1953 (L31HC)	IR1963 (L31HF)	IR1983 (L31HB)	
15-13 AWG (1.45-1.83mmø)	IR1954 (L33HC)	IR1964 (L33HF)	IR1984 (L33HB)	
13-11 AWG (1.83-2.31mmø)	IR1955 (L38HC)	IR1965 (L38HF)	IR1985 (L38HB)	
11-9 AWG (2.31-2.90mmø)	IR1956 (L34HC)	N/A	IR1986 (L34HB)	
9-8 AWG (2.90-3.25mmø)	IR1957 (L37HC)	N/A	N/A	
8-6 AWG (3.25-4.11mmø)	IR1958 (L39HC)	N/A	N/A	L2AS, IR0106
5-4 AWG (4.62-5.18mmø)	IR1959 (L40HC)	N/A	N/A	

WIRE SIZE	CARBIDE TIPPED INSERTS		MACHINE USED ON
	Concave Face	Flat Face	
24-20 AWG (0.51-0.81mmø)	IR9017 (L35CC)	IR9018 (L35CF)	L2S, L4, IR0104
20-16 AWG (0.81-1.30mmø)	IR9027 (L31CC)	N/A	
15-13 AWG (1.45-1.83mmø)	IR9037 (L33CC)	N/A	
13-11 AWG (1.83-2.31mmø)	IR9047 (L38CC)	N/A	

## FybRglass® Wheels (Sold in Pairs)

Part #	Material Grade	Size (Inches)			Size (mm)			Machine
		OD	W	AH	OD	W	AH	
AE0278	640	5/8	1	3/16	16	1	4.76	R1S
AE0279	201	Contact Eraser for cone wheel dimensions						RT2S
AE0280	553							
AE0281	640							
AE0006	553	1 1/4	3/4	25/64	32	19	9.90	PD9
AE0353	141	1 1/4	1	.335	32	25	8.51	D1, DV1, & D9
AE0254	201	1 1/4	1	.335	32	25	8.51	
AE0255	553	1 1/4	1	.335	32	25	8.51	
AE0256	640	1 1/4	1	.335	32	25	8.51	
AE0274	553	Contact Eraser for wobble wheel dimensions		.335	Contact Eraser for wobble wheel dimensions		8.51	
AE0058	553	1 1/4	1	3/8	32	25	9.52	Custom

## Wheel Dressers

- AR2701..... Wheel dresser and handle for twin wheel strippers with wheels over 1" (25mm) wide
- AR2702..... Packet of 10 wheel dresser refills for use with wheel dresser for wheels over 1" (25mm) wide
- AR2901..... Wheel dresser and handle for twin wheel strippers with wheels under 1" (25mm) wide
- AR3020..... Packet of 10 wheel dresser refills for use with wheel dresser for wheels under 1" (25mm) wide

## Wire Wheels

Part #	Size (Inches)				Size (mm)				Machine
	OD	W	AH	WS	OD	W	AH	WS	
AC1229	1 1/4	3/16	25/64	.008	32	5	9.92	.20	PD9
AC1308	1 3/8	3/4	.24	.008	35	20	6	.20	PD2S
AC1223	1 1/4	1	.335	.005	32	25	8.51	.12	D1, DV1, & D9
AC1230	1 1/4	1	.335	.008	32	25	8.51	.20	
AC2042	2	2	1/2	.008	50.8	50.8	12.7	.20	E200

## Wire Wheel Brush Fill Size Guide

.005 .....Fine wire stripping and braid combing  
 .008 ..... General purpose

From our patented Glo-Ring® infrared heating technology, Eraser offers a benchtop model and a handheld/benchtop capable unit. Both provide effective heating performance that is quick and quiet. The Glo-Ring® is perfect for heat shrinking, plastic tube bending, soldering, adhesive curing, solder preforms, and butt welding.

### Single Element Bench Glo-Ring®



This unit is ideal for smaller production applications that require the stability and convenience of a bench machine. Perfect for clean room use.

#### Specifications

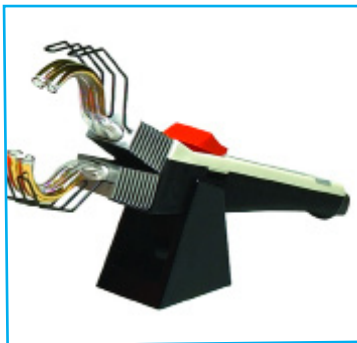
Heat source ..... quartz encapsulated heating elements  
Temperature range ..... adjustable to 1,500°F (815°C)  
Heating elements ..... open and close around material using hand switch or foot pedal  
(see "Continuous Elements" section for size options)

#### Ordering information

AH2401 (Single Element Glo-Ring®)..... 120V 60Hz

*Elements and guards are sold separately from unit.*

### Hand-Held Glo-Ring®



This portable tool can be taken to the production site for added convenience.

#### Specifications

Heat source ..... quartz encapsulated heating elements  
Temperature range ..... adjustable to 1,500°F (815°C)  
Heating elements ..... open and close around material using hand switch  
(see "Intermittent Elements" section for size options)

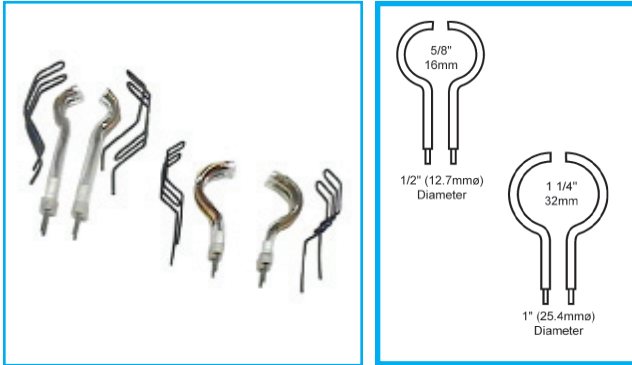
#### Ordering information

AH2001 (Hand-Held Glo-Ring®)..... 120V 50/60Hz, with temp. control

*Elements and guards are sold separately from unit.*

Available in various intermittent and continuous configurations, all Glo-Ring® elements are designed for long-life and optimum performance.

**Elements & Wire Guards (1/2" & 1")**



**Ordering information**

*Round, continuous, one pair*

- IH6515 ..... 1/2" (12.7mm), 120V 50/60Hz
- IH5511 ..... 1" (25.4mm), 120V 50/60Hz

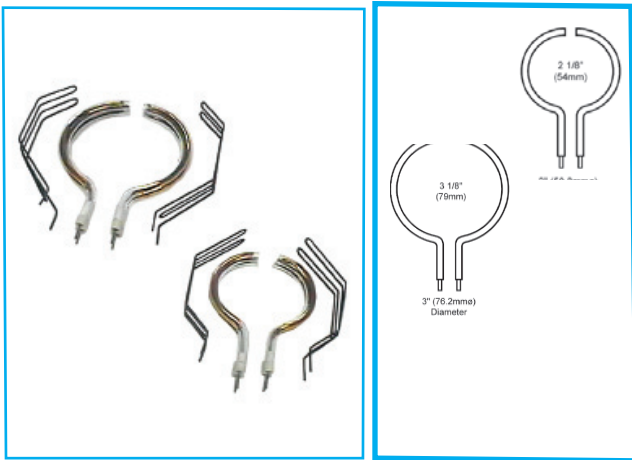
*Round, intermittent, one pair*

- IH3511 ..... 1/2" (12.7mm), 120V 50/60Hz
- IH4511 ..... 1" (25.4mm), 120V 50/60Hz
- IH4521 ..... 1" (25.4mm), 230V 50/60Hz

*Round, wire guards, one pair*

- IH6517 ..... for use with 1/2" element
- IH3551 ..... for use with 1" element

**Elements & Wire Guards (2" & 3")**



**Ordering information**

*Round, continuous, one pair*

- IH5512 ..... 2" (50.8mm), 120V 50/60Hz
- IH5513 ..... 3" (76.2mm), 120V 50/60Hz

*Round, intermittent, one pair*

- IH4512 ..... 2" (50.8mm), 120V 50/60Hz
- IH4513 ..... 3" (76.2mm), 120V 50/60Hz

*Round, wire guards, one pair*

- IH3552 ..... for use with 2" element
- IH3553 ..... for use with 3" element

Designed to work with a wide range of wire types and sizes, Eraser’s line of twisters offers the highest quality and durability available. Whether used for an intensive industrial application or in a lighter production environment, our machines deliver consistent, quality twists each time.

### G10S Wire Twister



This bench unit is for twisting pre-stripped stranded wires, strands of two or more wires, or wrapped shields on coaxial cables.

#### Specifications

Wire size ..... 26 to 12 AWG (0.41mm to 2.06mmø)  
 based on twisting insert (see below)  
 Max. twist length..... 1" (25.4mm) dep. on spacers used  
 Twisted pairs..... not to exceed two 18 AWG (1.02mmø) wires  
*G10S comes with one set of three twist length spacers and one wire guide.*

#### Ordering information

AR2161 (G10S)..... 120V 60Hz

#### Optional Parts

Twisting Inserts  
 IR8227 ..... for wire 26 to 22 AWG (0.41 to 0.64mmø)  
 IR8228 ..... for wire 24 to 18 AWG (0.51mm to 1.02mmø)  
 IR8229 ..... for wire 18 to 12 AWG (1.02 to 2.06mmø)  
 TR8223 ..... replacement spacer 1/2" (12.7mm) thick  
 IR8224 ..... replacement spacer 1/4" (6.35mm) thick  
 TR8225 ..... replacement spacer 1/8" (3.18mm) thick  
 IR8220 ..... replacement wire guide

### DCFT & DCFH Wire Twister



A lightweight, quick and easy to use hand held wire twister for twisting pairs or strands of wires.

#### Specifications

DCFT ..... Twist two wires 12 AWG (2.06mmø)  
 DCFT Twist length..... 2-1/2" (0.64mmø)  
 DCFH ..... Twist two wires 20 AWG (0.81mmø)  
 DCFH Twist length ..... unlimited  
 Hook length ..... 3/8" x 1/4" (10mm x 6.35mm)  
 Power source ..... multi-voltage 120/220/240V 50/60Hz

#### Ordering information

AR4601 (DCFT) ..... Twister, multi-voltage power unit  
 AR4701 (DCFH)..... Twister, multi-voltage power unit  
 IR7000 ..... multi-voltage power unit and bench holder only



### WT200 Automatic Wire Twister



Comes with three sizes of wire entry guides and flexible tubes for wire clamping. The tubing ensures that no metal contacts either stripped conductors or insulation.

#### Specifications

Max. dia. of all wires ..... not to exceed equiv. of two 16 AWG (1.3mm) wires  
 Max. twist length ..... 20' (6.096M)  
 Max. twist quantity ..... 9,999 twists per cycle  
 Twist speed ..... variable up to 26 turns per second  
 Twist direction ..... reversible

#### Ordering information

AR0200 (WT200) ..... 120V 50/60Hz

#### Replacement Parts

Twisting Inserts  
 IR5180 ..... 1/8" (3.2 mm) ID clamping tube (use w/ TR8176)  
 TR8176 ..... 1/8" (3.2 mm) ID wire entry guide (use w/ IR5180)  
 IR5200 ..... 3/16" (4.7 mm) ID clamping tube (use w/ TR8177)  
 TR8177 ..... 3/16" (4.7 mm) ID wire entry guide (use w/ IR5200)  
 IR5190 ..... 1/4" (6.3 mm) ID clamping tube (use w/ TR8178)  
 TR8178 ..... 1/4" (6.3 mm) ID wire entry guide (use w/ IR5190)

### WT300 Automatic Wire Twister



The internal steel clamp jaws enable magnet wire, very fine or slippery wire to be twisted easily.

#### Specifications

Max. dia. of all wires ..... not to exceed equiv. of two bare (uninsulated) 16 AWG (1.3mm) wires  
 Max. twist length ..... 20' (6.096M)  
 Max. twist quantity ..... 9,999 twists per cycle  
 Twist speed ..... variable up to 26 turns per second  
 Twist direction ..... reversible

#### Ordering information

AR0300 (WT300) ..... 120V 50/60Hz

#### Replacement Parts

Twisting Inserts  
 TR0566 ..... 1/8" (3.2 mm) ID wire entry guide

### WT40 Automatic Wire Twister



Using holders that are custom made for each application, the WT40 can twist together several large wires, or pre-terminated wires.

#### Specifications

Max. dia. of all wires ..... not to exceed equiv. of three 14 AWG (1.63mmØ) wires  
 Max. twist length ..... 20' (6.096M)  
 Max. twist quantity ..... 9,999 twists per cycle  
 Twist speed ..... variable up to 26 turns per second

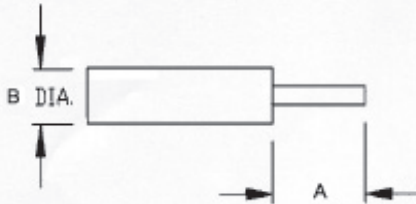
#### Ordering information

AR4240 (WT40) ..... 120V 50/60Hz

# CUTTER HEAD ASSIGNMENT FORM

To Process your stripping head order accurately please provide the following:

- The actual strip dimensions, the outside diameter (O.D.) of your cable and any tolerance requirements
- Use the appropriate diagram based on the number of strip levels required
- Specify inch or metric
- Please fill out your company's name, signature and date

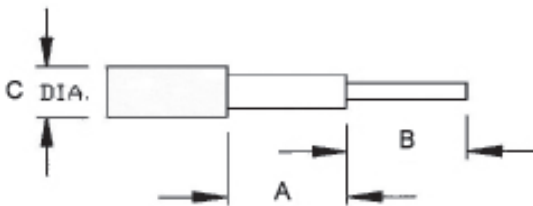


\*A = \_\_\_\_\_

B = \_\_\_\_\_ Dia.

**ONE LEVEL  
COAX OR  
SEMI-RIGID**

\*Strip Dimensions



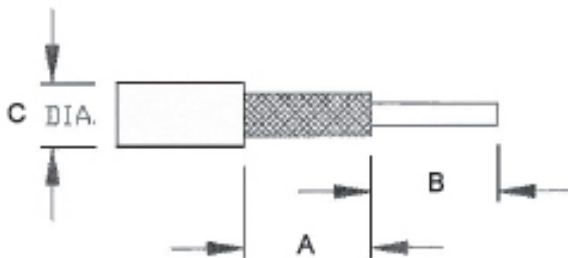
\*A = \_\_\_\_\_

\*B = \_\_\_\_\_

C = \_\_\_\_\_ Dia.

**TWO LEVEL  
(DIELECTRIC EXPOSED)  
COAX OR SEMI-RIGID**

\*Strip Dimensions



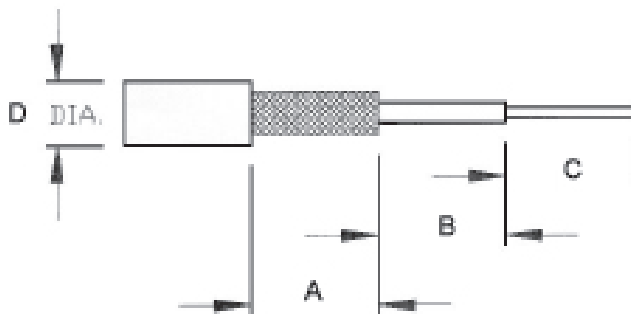
\*A = \_\_\_\_\_

\*B = \_\_\_\_\_

C = \_\_\_\_\_ Dia.

**TWO LEVEL  
(BRAID EXPOSED)  
COAX**

\*Strip Dimensions



\*A = \_\_\_\_\_

\*B = \_\_\_\_\_

\*C = \_\_\_\_\_

D = \_\_\_\_\_ Dia.

**THREE LEVEL  
COAX OR JACKETED  
SEMI-RIGID**

\*Strip Dimensions

Bench:  Hand:

Tolerance Required = +/- . \_\_\_\_\_ /Inch or Metric (Circle One)

Company Name: \_\_\_\_\_

Customer Signature: \_\_\_\_\_ Date: \_\_\_\_\_

**The Eraser Company, Inc.**  
 123 Oliva Drive  
 Syracuse, NY 13221, USA  
 Phone: (315) 454-3237  
 Fax: (315) 454-3090  
 Website: www.eraser.com  
 E-mail: info@eraser.com





## Eraser Customer Service

The Eraser Company takes great pride in serving you with quality products for all of your wire, cable and tube processing needs. As an ISO 9001:2015 Certified Company, we are committed to your ultimate satisfaction with the highest quality products, and superior service.

- **Take Advantage of the Industry-Leading Eraser Certification Program (E.C.P.)**

This program will test and validate your wire, cable or tubing material specific to your business and is designed to provide you with industry-leading equipment to solve your specific production and processing needs.

- **Tune-up & Repair: Be proactive, not reactive!**

Let our trained professionals ensure that your Eraser brand equipment is performing at its optimum level during its entire life cycle. Our preventative maintenance will extend the life of your equipment and optimize its performance.

- **Technical Information Center**

Available on Eraser's website, our Technical Information Center provides a wealth of information including Tips and Facts and Frequently Asked Questions about our wire, cable and tube processing equipment.

For more information about Eraser's products and services, please visit our website at [www.eraser.com](http://www.eraser.com).





# The Eraser Company, Inc.

MAILING ADDRESS

PO Box 4961  
Syracuse, NY 13221

SHIPPING ADDRESS

123 Oliva Drive  
Syracuse, NY 13211

PHONE NUMBER

315-454-3237



MADE IN SYRACUSE, NY. USED AROUND THE WORLD.