



Front End and Wafer Handling Products Catalog



About Us



Established in 1999 by a team of semiconductor industry veterans, ePAK is a full-service designer, manufacturer and supplier of precision engineered products and solutions for the automated transport and handling of semiconductor and electronic devices. Our product areas include front-end wafer handling, back-end IC transport, and end-system sub-assembly handling. Our products are sold globally to top tier global customers including semiconductor companies, system OEMs, and IC assembly and test operations. Our large-scale manufacturing and design center in Shenzhen, China is centrally located to the semiconductor industry's back-end activities and supports a global network of JIT distribution centers. ePAK's corporate headquarters is located in Austin, Texas and we maintain nine sales and applications engineering offices worldwide.

Device protection and contamination control begins at the wafer fab and extends to the assembly site. ePAK never forgets that the most valuable product in the semiconductor and electronics industry is also the most fragile and susceptible to mishandling and contamination. Not all wafers are created equal...with back-grinding, unique material sets, and exotic semiconductor processes, one product does not fit all wafers.



From ePAK's most advanced eLX wafer canisters to cost efficient wafer jars, ePAK tailor fits their products to meet your requirements.

- Expanding constantly to meet increasing demand
- Semiconductor & electronics packaging market focused
- Customer driven product development
- Over 130 injection molding lines
- Full range of materials available
- 12 cleaning lines for wafer products
- 4 class 100 clean rooms (over 4500 sq. meters)



TABLE OF CONTENTS



Products

1" / 1.5" / 2" / 2.5" / 3" / 3.25" / 3.54"

	<i>Pages</i>
* Single Wafer Shippers	33
* 25 Wafer Shipping Boxes	13, 14
* Process Boats	20, 24, 25
* Storage Boxes	20
* Envelopes	30
* OverPAKs™	34 59,

4" (100mm)

* Single Wafer Shippers	31
* 25 Wafer Shipping Boxes	13, 14, 15
* Wafer Jars	6
* Process Boats	20, 24, 25
* Storage Boxes	20
* Envelopes	30
* OverPAKs	34, 59-60,

5" (125mm)

* Single Wafer Shippers	33
* 25 Wafer Shipping Boxes	15
* Wafer Canisters	5
* Wafer Jars	6
* Process Boats	21, 25
* Storage Boxes	21, 28
* Envelopes	30
* OverPAKs™	59-60,

Products

6" (150mm)

	<i>Pages</i>
* Single Wafer Shippers	33, 35, 37
* 25 Wafer Shipping Boxes	13, 14-15
* Wafer Canisters	4-5
* Wafer Jars	6
* Process Boats	22, 24, 26
* Storage Boxes	22, 28
* OverPAKs™	35, 59-60
* Envelopes	30

8" (200mm)

* Single Wafer Shippers	35, 36, 37
* 25 Wafer Shipping Boxes	15
* Wafer Canisters	4-5
* Wafer Jars	6
* Process Boats	23, 24 26
* Storage Boxes	23, 29
* OverPAKs™	59-60
* Envelopes	30

12" (300mm)

* Single Wafer Shippers	35, 37
* Wafer Canisters	4-5
* Wafer Jars	6
* eFOSB-300-A™	16-17
* eFOUP-300-A™	18-19
* OverPAKs™	57-59

18" (450mm)

* Single Wafer Shippers	35
-------------------------	--------------------

Products

Internal Canister/Jar Cushioning

	<i>Pages</i>
* Separators/Interleaf	7
* Ring Separators	8
* Foam Disks	9
* Foam Liners for Wafer Jars	10
* ePAD™ Wafer Protection System	11-12

Film / Flex Frames

* Film / Flex Frames	39, 40
* Film Frame OverPAKs™	60
* Film Frame Single Shippers	41
* Film Frame Multi-Shippers	42
* Film Frame Canisters	43
* Film Frame Canister Accessories	44-45

Grip / Hoop Rings

* Grip / Hoop Rings	46-47
* Shippers	48

Chip Trays

* Chip Trays & Accessories	50-56
----------------------------	-----------------------

Bags

* Clean Room	62, 63,
* Moisture Barrier	64-65

Handles

* Handles for Process Boats	32
-----------------------------	--------------------

Glass Substrate Shippers

	49
--	--------------------

Laser Marking

	57
--	--------------------

Badge Holders & Clips

	31
--	--------------------



eLX™ WAFER CANISTERS*

- Enhanced protection of wafer surfaces
- Minimizes lateral movement without applying compression to delicate wafer edges
- Advanced design minimizes particle generation
- Secure 4 latch system (with 2 latch option)
- Impact resistant design
- Large label areas
- Interfaces with industry robotic handling equipment
- Drop-in replacement for old industry designs
- Protective shipping OverPAKs available...[see products](#)



Wafer canister part numbers and ordering information:

Wafer Size	ePAK Order Code	ePAK Description	Internal Diameter	Internal Height	Corner Latches #	Outside Base Size	Std Pack Quantity
6"	eWB0086-2-x	eCT-LX6/150-2-44-R.1-x	151 mm	44 mm (1.73")	2	174.5mm x 174.5mm	10/carton
6"	eWB0086-4-x	eCT-LX6/150-4-44-R.1-x	151 mm	44 mm (1.73")	4	174.5mm x 174.5mm	10/carton
6"	eWB0019-2-x	eCT-LX6/150-2-44-x	151 mm	44 mm (1.73")	2	225mm x 225mm	10/carton
6"	eWB0019-4-x	eCT-LX6/150-4-44-x	151 mm	44 mm (1.73")	4	225mm x 225mm	10/carton
6" **	eWB0435-4-x	eCT-LX-6/150-4-66-x	150.8 mm	66 mm (2.6")	4	174.5mm x 174.5mm	10/carton
8"	eWB0018-2-x	eCT-LX8/200-2-44-x	201 mm	44 mm (1.73")	2	225mm x 225mm	10/carton
8"	eWB0018-4-x	eCT-LX8/200-4-44-x	201 mm	44 mm (1.73")	4	225mm x 225mm	10/carton
8"	eWB0383-4-x	eCT-LX-8/200-4-69-x	200.8 mm	69 mm (2.72")	4	225mm x 225mm	10/carton
8" **	eWB0516-4-x	eCT-LX-8/200-4-69-R.3-x	200.8 mm	69 mm (2.72")	4	225mm x 225mm	10/carton
8" ** (note 2)	eWB0582-4-x	eCT-LX-8/200-4-69-R.4-x	200.8 mm	69 mm (2.72")	4	225mm x 225mm	10/carton
12"	eWB0026-4-x	eCT-LX12/300-4-44-x	301.5 mm	44 mm (1.73")	4	326mm x 326mm	12/carton
12" **	eWB0371-4-x	eCT-LX12/300-4-71-x	301.2 mm	71 mm (2.79")	4	326mm x 326mm	8/carton

** FHRS & Standard Ring separator compatible canisters ([Pg. 8](#))

Note 2: Latches are outside enclosure

(PATENTS: US #6988620, PRC #ZL 03 2 07820 X, Singapore #106157, Taiwan # 1299315, Japan #4383808)

eFORM™ – Clean Adjustable Platform option to minimize vertical movement (–x in P/N):

Wafer Size	ePAK Order Code	ePAK Description	Diameter	Adjustable Height	Std Pack Quantity
6"	eOP0042-x	eAP6-150-16-x	150 mm	16 mm	10/pack
8"	eOP0041-x	eAP8-200-16-x	200 mm	16 mm	10/pack
12"	eOP0045-x	eAP12-300-16-x	300 mm	16 mm	10/pack



Material code options: (–x in P/N):

Material	Code	SR
Conductive PP	eM-01-BLK	10e4-10e5

-A wide range of cushion disks and wafer separators are available-

[RETURN TO TABLE OF CONTENTS](#)



STANDARD WAFER CANISTERS

- | For high-security transit of wafers
- | Designed for stacking
- | Quick release snap-lock design for lid removal
- | Recessed slots for easy loading and unloading
- | Wafer loader machine compatible with most industry equipment
- | Protective shipping OverPAKs available...[see products](#)



Wafer canister part numbers and ordering information:

Wafer Size	ePAK Order Code	ePAK Description	Internal Diameter	Internal Height	Corner Latches #	Std Pack Quantity
5" **	eWB0055-2-x	eLC-TI5/125-2-x	127 mm	28 mm (1.1")	2	20/carton
5" **	eWB0055-4-x	eLC-TI5/125-4-x	127 mm	28 mm (1.1")	4	20/carton
6" **	eWB0102-2-x	eLC-TI6/150-2-x	152 mm	28 mm (1.1")	2	20/carton
6"	eWB0007-x	eCT-152-26-x	152 mm	26 mm (1.1")	2	30/carton
8" **	eWB0075-2-x	eLC-TI8/200-2-x	202 mm	28 mm (1.1")	2	20/carton
8" **	eWB0075-4-x	eLC-TI8/200-4-x	202 mm	28 mm (1.1")	4	20/carton
8"	eWB0004-x	eCT-202-30-x	202 mm	30 mm (1.2")	2	20/carton
8"	eWB0234-2-x	eCT8/200-38-2-x	202 mm	38 mm (1.5")	2	20/carton
8"	eWB0234-4-x	eCT8/200-38-4-x	202 mm	38 mm (1.5")	4	20/carton
8"	eWB0585-x	eCT8/200-13.6-x	202 mm	8 mm (0.3")	4	20/carton
12" **	eWB0009-x	eCT-303-21-x	303 mm	21 mm (0.9")	4	10/carton

(** Patented "Double Ring" design)

Material code options: (-x in P/N):

Material	Code	SR
Conductive PP	eM-01-BLK	10e4-10e5
Natural PP	eM-08-NAT	n/a

- A wide range of cushion disks and wafer separators are available

[RETURN TO TABLE OF CONTENTS](#)



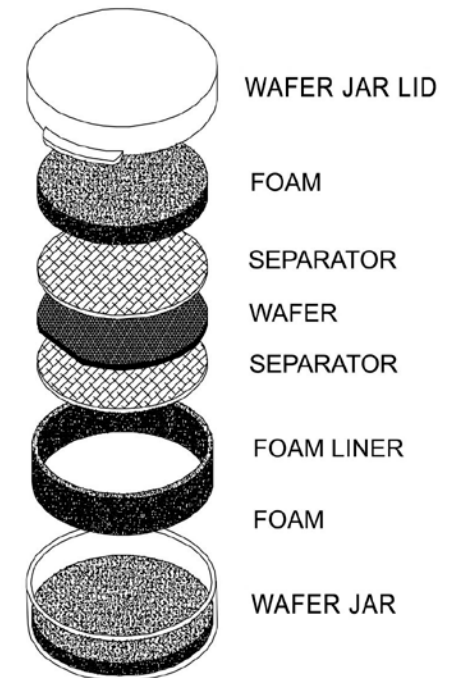


- Easy loading/unloading in automated or manual applications
- Impact resistant containers feature a snap-on lid for secure packing
- Available in both conductive PP and natural (non-conductive) PP materials
- A wide range of cushion disks, jar liners and wafer separators are available
- Overpaks available...[see products](#)

WAFER JARS

Wafer Jar part numbers and ordering information:

Wafer Size	ePAK Order Code	ePAK Description	Internal Diameter	Internal Height	Std Pack Quantity
4"	eWB0040-x	eJR4-100-23-x	111 mm	23 mm (0.9")	200/carton
4"	eWB0044-x	eJR4-100-32-x	111 mm	32 mm (1.3")	200/carton
4"	eWB0038-x	eJR4-100-49-x	117 mm	49 mm (1.9")	100/carton
4"	eWB0041-x	eJR4-100-60.5-x	111 mm	60.5 mm (2.4")	100/carton
5"	eWB0072-x	eJR5-125-38-x	142 mm	38 mm (1.5")	100/carton
5"	eWB0128-x	eJR5-125-49-x	142 mm	49 mm (1.9")	100/carton
5"(Note #1)					
5"(Note #2)		-			
5" (Note #3)		-			
6"	eWB0033-x	eJR6-150-20-x	167 mm	20 mm (0.8")	100/carton
6"	eWB0001-x	eJR-170-38-x	167 mm	38 mm (1.5")	100/carton
6"	eWB0150-x	eJR6-150-49-x	167 mm	49 mm (1.9")	100/carton
6"	eWB0008-x	eJR-167-76-x	167 mm	76 mm (3")	60/carton
6" (eLX style, see Note 5)	eWB0586-x	eJR6-150-38-x	151 mm	38 mm (1.5")	100/carton
8"	eWB0035-x	eJR8-200-23-x	235 mm	23 mm (0.9")	40/carton
8"	eWB0010-x	eJR-235-51-x	235 mm	51 mm (2")	20/carton
8" (eLX style, see Note 5)	eWB0579-x	eJR8-200-51-x	235 mm	51 mm (2")	20/carton
12"(Note #4)	eWB0054-x	eJR12-300-23-x	303 mm	23 mm (0.9")	10/carton



Note #1: Additional 5"x 20mm option for wafers utilize the 6" (eJR-150-20-X) Jar, 6" (eFL6-518-19-6-eM-04-H-PNK) Liner, and the 5" (eFL5-474-19-13-eM-04-H-PNK) Liner

Note #2: Additional 5"x 38mm option for wafers utilize the 6" (eJR-170-38-X) Jar, 6" (eFL6-518-37-6-eM-04-H-PNK) Liner, and the 5" (eFL5-474-37-13-eM-04-H-PNK) Liner

Note #3: Additional 5"x 76mm option for wafers utilize the 6" (eJR-167-76-X) Jar, 6" (eFL6-518-75-6-eM-04-H-PNK) Liner, and the 5" (eFL5-474-75-13-eM-04-H-PNK) Liner

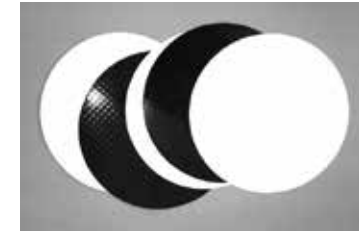
Note #4: Patented "Double Ring" design does not require a foam liner

Note #5: Patented "eLX" style internal features reduce lateral movement and do not require a foam liner

Material code options: (-x in P/N):

Material	Code	SR
Conductive PP	eM-01-BLK	10e4-10e5
Natural PP	eM-08-NAT	n/a

[RETURN TO TABLE OF CONTENTS](#)



Wafer Separators – (Interleaf) for use between individual wafers

Anti-static spun PO (Tyvek®):

Wafer Size	ePAK Order Code	ePAK Description	Interleaf Diameter	Separator Thickness	Std Pack Quantity
4"	eIL0010-eM-03-A-WHT	eIL4-100-0.16-eM-03-A-WHT	100 mm	0.16 mm (.006")	250/pack
5"	eIL0007-eM-03-A-WHT	eIL5-125-0.16-eM-03-A-WHT	125 mm	0.16 mm (.006")	250/pack
6"	eIL0005-eM-03-A-WHT	eIL6-150-0.16-eM-03-A-WHT	150 mm	0.16 mm (.006")	250/pack
8"	eIL0004-eM-03-A-WHT	eIL8-200-0.16-eM-03-A-WHT	200 mm	0.16 mm (.006")	250/pack
12"	eIL0006-eM-03-A-WHT	eIL12-300-0.16-eM-03-A-WHT	300 mm	0.16 mm (.006")	250/pack

Carbon Separator (Conductive PS):

Wafer Size	ePAK Order Code	ePAK Description	Interleaf Diameter	Separator Thickness	Std Pack Quantity
4"	eIL0023-eM-20-BLK	eIL4-100-0.07-eM-20-BLK	100 mm	0.07 mm (.003")	200/pack
4"	eIL0009-eM-20-BLK	eIL4-100-0.13-eM-20-BLK	100 mm	0.13 mm (.005")	200/pack
5"	eIL0024-eM-20-BLK	eIL5-125-0.07-eM-20-BLK	125 mm	0.07 mm (.003")	200/pack
5"	eIL0008-eM-20-BLK	eIL5-125-0.13-eM-20-BLK	125 mm	0.13 mm (.005")	200/pack
6"	eIL0016-eM-20-BLK	eIL6-150-0.07-eM-20-BLK	150 mm	0.07 mm (.003")	200/pack
6"	eIL0002-eM-20-BLK	eIL6-150-0.13-eM-20-BLK	150 mm	0.13 mm (.005")	200/pack
8"	eIL0022-eM-20-BLK	eIL8-200-0.07-eM-20-BLK	200 mm	0.07 mm (.003")	200/pack
8"	eIL0001-eM-20-BLK	eIL8-200-0.13-eM-20-BLK	200 mm	0.13 mm (.005")	200/pack
12"	eIL0003-eM-20-BLK	eIL12-300-0.16-eM-20-BLK	300 mm	0.16 mm (.006")	150/pack

Material code info:

Material	Code	SR
Anti-static spun PO (Tyvek®)	eM-03-A-WHT	10e6-10e11
Proprietary conductive PS	eM-20-BLK	10e4-10e11

[RETURN TO TABLE OF CONTENTS](#)



RING SEPARATORS

- Ring Separators are used when a surface contact is not preferred. Outer raised edge of the ring contacts only the wafer outer circumference on its active surface.
- Ring separators are only for use in "eLX" style canisters as they require lateral movement to be minimized.
- The eLX canisters, eWB0383 & (200mm) and eWB0516mWB0371 (300mm) are designed for 25 wafers when using Ring Separators.
- "Fixed Height Ring Separators" (FHRS) are designed to self-stack. They always have same # of rings per canister & the stacking feature removes weight of wafer stack from individual wafers.

Wafer Size	ePAK Order Code	ePAK Description	Separator Diameter	Separator Thickness	Std Pack Quantity
STANDARD RING SEPARATORS (uses wafers thickness to establish separation)					
6" (150mm)	eRS0003-eM-01-BLK	150MM COIN STACK RING SEPARATOR-eM-01-BLK	150 mm	1.75 mm	1200/box
8" (200mm)	eRS0001-eM-01-BLK	200MM COIN STACK RING SEPARATOR-eM-01-BLK	200 mm	1.75 mm	600/box
8" (200mm)	eRS00013-eM-01-BLK	200MM COIN STACK RING SEPARATOR R.5-eM-01-BLK	200 mm	2.80 mm	600/box
8" (200mm)	eRS00016-eM-01-BLK	200MM COIN STACK RING SEPARATOR R.6-eM-01-BLK	200 mm	2.90 mm	600/box
12" (300mm)	eRS0002-eM-01-BLK	300MM COIN STACK RING SEPARATOR-eM-01-BLK	300 mm	1.75 mm	200/box
FHRS (Fixed Height Ring Separators)** -Uses outside stacking supports to provide separation and minimize stack pressure on wafers					
*6" (150mm)	eRS0023-eM-01-BLK	eFHRS-150-R.2-eM-01-BLK (*See Note #1 below)	150mm	2.28 mm	52/carton
*8" (200mm)	eRS0024-eM-01-BLK	eFHRS-200-eM-01-BLK (*See Note #2 below)	200 mm	3.40 mm	52/carton
8" (200mm)	eRS0026-eM-01-BLK	eFHRS-200-R.1-eM-01-BLK (for <1.20mm thickness wafers)	200 mm	3.32 mm	52/carton
8" (200mm)	eRS0028-eM-01-BLK	eFHRS-200-R.2-eM-01-BLK (for <0.90mm thickness wafers)	200 mm	3.47 mm	52/carton
*12" (300mm)	eRS0015-eM-01-BLK	eFHRS-300-eM-01-BLK (*See Note #3 below)	300 mm	3.75 mm	26/carton
*Note #1- Fixed Height Ring Separator design. Only designed for use with eWB0435-4-x wafer canister.					
*Note #2- Fixed Height Ring Separator design. Only designed for use with eWB0516-4-x wafer canister.					
*Note #3- Fixed Height Ring Separator design. Only designed for use with eWB0371-4-x wafer canister.					

Material code:

Material	Code	SR
Conductive PP	eM-01-BLK	10e4-10e5

**PATENT PENDING

STANDARD RING SEPARATOR



FIXED HEIGHT RING SEPARATOR



[RETURN TO TABLE OF CONTENTS](#)

FOAM PACKING MATERIALS

-FOAM CUSHION DISKS-

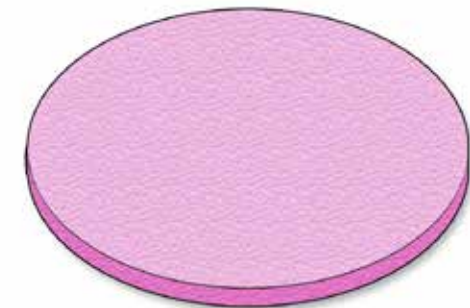
Top/Bottom Cushion Disks – ESD sensitive cushioning material for use with Canisters and Jars

Wafer Size	ePAK Order Code	ePAK Description	Foam Diameter	Foam Thickness	Std Pack Quantity
4"	eFD0010-eM-04-H-PNK	eFD4-100-3-eM-04-H-PNK	100mm	3 mm	100/pack
4"	eFD0011-eM-04-H-PNK	eFD4-100-6-eM-04-H-PNK	100mm	6 mm	50/pack
5"	eFD0008-eM-04-H-PNK	eFD5-125-3-eM-04-H-PNK	125mm	3 mm	100/pack
5"	eFD0004-eM-04-H-PNK	eFD5-125-6-eM-04-H-PNK	125mm	6 mm	50/pack
6"	eFD0007-eM-04-H-PNK	eFD6-150-3-eM-04-H-PNK	150mm	3 mm	100/pack
6"	eFD0002-eM-04-H-PNK	eFD6-150-6-eM-04-H-PNK	150 mm	6 mm	50/pack
8"	eFD0006-eM-04-H-PNK	eFD8-200-3-eM-04-H-PNK	200 mm	3 mm	100/pack
8"	eFD0001-eM-04-H-PNK	eFD8-200-6-eM-04-H-PNK	200 mm	6 mm	50/pack
***8"	eFD0013-eM-04-H-PNK	eFD8-205-3-eM-04-H-PNK	205 mm	3 mm	100/pack
***8"	eFD0012-eM-04-H-PNK	eFD8-205-6-eM-04-H-PNK	205 mm	6 mm	50/pack
12"	eFD0009-eM-04-H-PNK	eFD12-300-3-eM-04-H-PNK	300 mm	3 mm	100/pack
12"	eFD0003-eM-04-H-PNK	eFD12-300-6-eM-04-H-PNK	300 mm	6 mm	50/pack

***FOR USE WITH WAFER JAR ONLY

Material code options:

Material	Code	SR
Closed-cell polyethylene	eM-04-H-PNK	10e5-10e11



[RETURN TO TABLE OF CONTENTS](#)



FOAM PACKING MATERIALS

- JAR LINERS -

Jar Liner – ESD sensitive cushioning material for use with Wafer Jars only

Wafer Size	ePAK Order Code	ePAK Description	Foam Length	Foam Width	Foam Thickness	Std Pack Quantity
4"	eFL0022-eM-04-H-PNK	eFL4-345-22-3-eM-04-H-PNK	345 mm	22 mm	3 mm	25/pack
4"	eFL0028-eM-04-H-PNK	eFL4-345-31-3-eM-04-H-PNK	345 mm	31 mm	3 mm	25/pack
4"	eFL0023-eM-04-H-PNK	eFL4-362-48-6-eM-04-H-PNK	362 mm	48 mm	6 mm	25/pack
4"	eFL0029-eM-04-H-PNK	eFL4-345-59.5-3-eM-04-H-PNK	345 mm	59.5 mm	3 mm	25/pack
5"	eFL0039-eM-04-H-PNK	eFL5-435-37-6-eM-04-H-PNK	435 mm	37 mm	6 mm	25/pack
5"	eFL0056-eM-04-H-PNK	eFL5-435-48-6-eM-04-H-PNK	435 mm	48 mm	6 mm	25/pack
5" (see Note#1)	eFL0030-eM-04-H-PNK	eFL5-474-19-13-eM-04-H-PNK	474 mm	19 mm	13 mm	25/pack
5" (see Note#2)	eFL0007-eM-04-H-PNK	eFL5-474-37-13-eM-04-H-PNK	474 mm	37 mm	13 mm	25/pack
5" (see Note#3)	eFL0008-eM-04-H-PNK	eFL5-474-75-13-eM-04-H-PNK	474 mm	75 mm	13 mm	25/pack
6"	eFL0012-eM-04-H-PNK	eFL6-518-19-6-eM-04-H-PNK	518 mm	19 mm	6 mm	50/pack
6"	eFL0002-eM-04-H-PNK	eFL6-518-37-6-eM-04-H-PNK	518 mm	37 mm	6 mm	50/pack
6"	eFL0062-eM-04-H-PNK	eFL6-518-48-6-EM-04-H-PNK	518 mm	48 mm	6 mm	50/pack
6"	eFL0003-eM-04-H-PNK	eFL6-518-75-6-eM-04-H-PNK	518 mm	75 mm	6 mm	50/pack
8"	eFL0013-eM-04-H-PNK	eFL8-712-22-13-eM-04-H-PNK	712 mm	22 mm	13 mm	25/pack
8"	eFL0001-eM-04-H-PNK	eFL8-712-50-13-eM-04-H-PNK	712 mm	50 mm	13 mm	25/pack

Notes#1 This 5" wafer configuration utilizes the 6" (eJR-167-20-X) Jar, 6" (eFL6-518-19-6-eM-04-H-PNK) Liner, and this 5" (eFL5-474-19-13-eM-04-H-PNK) Liner

Notes#2 This 5" wafer configuration utilizes the 6" (eJR-167-38-X) Jar, 6" (eFL6-518-37-6-eM-04-H-PNK) Liner, and this 5" (eFL5-474-37-13-eM-04-H-PNK) Liner

Notes#3 This 5" wafer configuration utilizes the 6" (eJR-167-76-X) Jar, 6" (eFL6-518-75-6-eM-04-H-PNK) Liner, and this 5" (eFL5-474-75-13-eM-04-H-PNK) Liner



Material code options:

Material	Code	SR
Closed-cell polyethylene	eM-04-H-PNK	10e5-10e11

[RETURN TO TABLE OF CONTENTS](#)

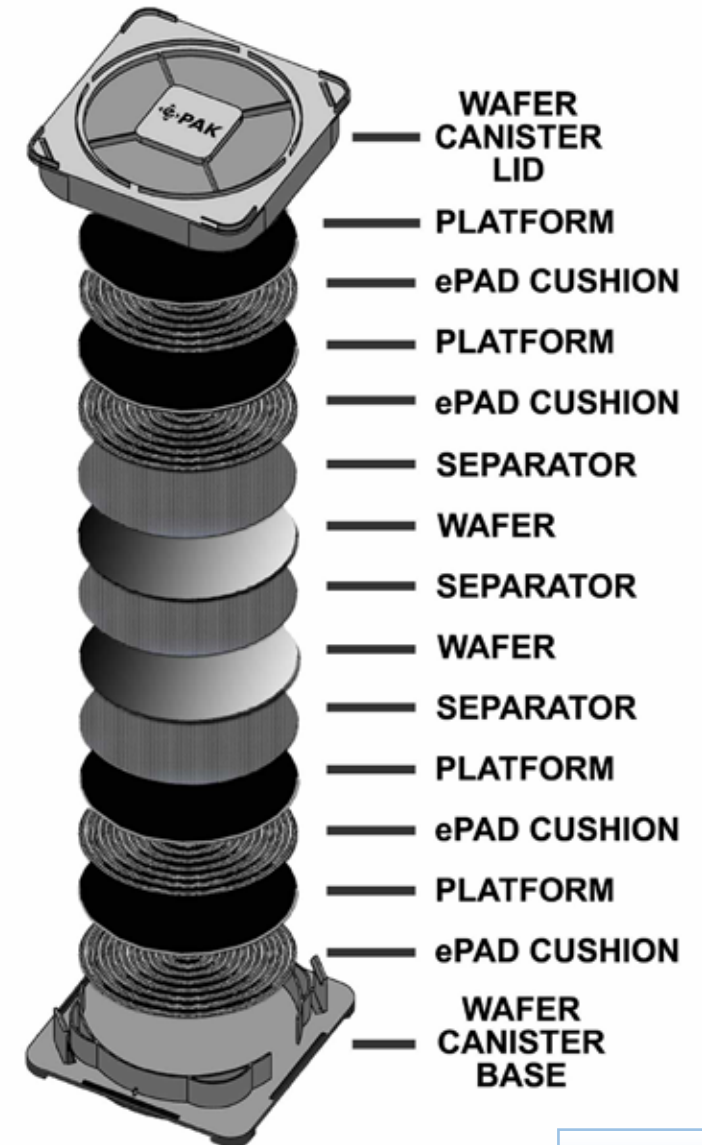




ePAD™* WAFER PROTECTION SYSTEM

High performance alternative to foam-based solutions

- Made from proprietary, low-ionic, flexible, conductive polystyrene
- Ideal for both Cu and Al metallized wafers
- Best choice for both long and short term storage needs
- Available for 6", 8" and 12" wafer sizes



(PATENTS: US #7425362, Singapore #105587, Japan #4205540, Taiwan #I297662, PRC#ZL 03 2 07819.6)



[RETURN TO TABLE OF CONTENTS](#)

ePAD™ Thermal Formed Wafer Cushion – Particle free, vacuum formed, cushioning material for wafer stack

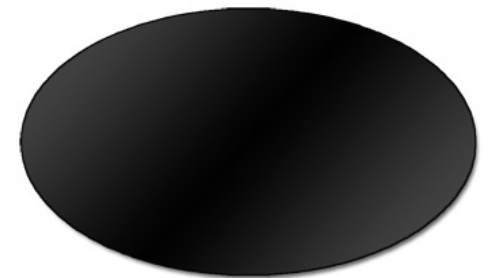
Wafer Size	ePAK Order Code	ePAK Description	Diameter	Thickness	Std Pack Quantity
6"	eVT0208-x	eWP6-150-3-x	150 mm	3 mm	50/box
6"	eVT0048-x	eWP6-150-5-x	150 mm	5 mm	50/box
8"	eVT0209-x	eWP8-200-3-x	200 mm	3 mm	50/box
8"	eVT0030-x	eWP8-200-5-x	200 mm	5 mm	50/box
12"	eVT0210-x	eWP12-300-5-x	300 mm	5 mm	50/box

ePAD™ Wafer Platform – Provides the flat surface required for the proper function of the ePAD system

Wafer Size	ePAK Order Code	ePAK Description	Diameter	Thickness	Std Pack Quantity
6"	eVT0049-x	eFP6-150-0.8-x	150 mm	0.8 mm	50/box
8"	eVT0050-x	eFP8-200-0.8-x	200 mm	0.8 mm	50/box
12"	eVT0211-x	eFP12-300-0.8-x	300 mm	0.8 mm	50/box

Material code options for all ePAD™ Thermal Formed Wafer packing materials: (-x in P/N):

Material	Code	SR
Proprietary conductive PS	eM-20-BLK	10e4-10e11



(PATENTS: US #7425362, Singapore #105587, Japan #4205540, Taiwan #I297662, PRC#ZL 03 2 07819.6)

[RETURN TO TABLE OF CONTENTS](#)



VACUUM-FORMED WAFER SHIPPING BOXES

- Designed to hold 25 wafers by the edge
- Economical solution for small wafers
- 2 piece design includes Lid and Base



Product info:

Wafer Size	ePAK Order Code	ePAK Description	Internal Diameter	Material Options
1"	eVT0404-ASSY-1	eV8-1/25-25-Base/Lid-0.8-ASSY-1	25 mm	eM-21
2"	eVT0241-ASSY-#	eV8-2/50-25-Base/Lid-0.8-ASSY-#	50 mm	eM-20, eM-21
2" SQ	eVT1199-ASSY-2	eV10-2/50.8-25-1.0-ASSY-2	2" Square	eM-21
2.5"	eVT0406-ASSY-#	eV10-2.5/63.5-25-Base/Lid-0.8-ASSY-#	63.5 mm	eM-20, eM-21
3"	eVT0242-ASSY-1	eV10-3/76-25-Base/Lid-1.3-ASSY-1	76 mm	eM-21
3"	eVT0294-ASSY-1	eV10-3/76-25-Base/Lid-0.8-ASSY-1	76 mm	eM-21
4"	eVT0293-ASSY-1	eV12-4/100-25-Base/Lid-0.7-ASSY-1	100 mm	eM-21
4"	eVT0405-ASSY-1	eV12-4/103-25-Base/Lid-1.3-ASSY-1	103 mm	eM-21
6"	eVT0736-ASSY-1	eV15-6/150-13-Base/Lid-1.5-ASSY-1	150 mm	eM-21

Material code options: (-x in P/N)

Material	Code	SR
Clear PS	eM-21-CLR	n/a
Proprietary conductive PS	eM-20-BLK	10e4-10e11

[RETURN TO TABLE OF CONTENTS](#)

WAFER SHIPPING BOXES



- Designed to hold multiple wafers by the edge
- 3 piece design includes Top, Cassette, and Base
- Designed to interface with automated equipment
- Clean Room plastic shipping bags available

Product info:

Wafer Size	ePAK Order Code	ePAK Description	Internal Diameter	Number of Wafers Held
1"	eWB0302-ASSY-#	eMS-1/25.4-25-R.1-ASSY-#	25.4 mm	25
2"	eWB0028-ASSY-#	eMS-2/50-25-ASSY-#	50 mm	25
** 2"	eWB0340-ASSY-#	eMS-2/50-25-R.2-ASSY-#	50 mm	25
2.5"	eWB0105-ASSY-#	eMS-2.5/61.75-25-ASSY-#	61.75 mm	25
3"	eWB0029-ASSY-#	eMS-3/76-25-ASSY-#	76 mm	25
** 3"	eWB0297-ASSY-#	eMS-3/76-25-R.3-ASSY-#	76 mm	25
4"	eWB0258-ASSY-#	eMS-4/100-10-ASSY-#	100 mm	10
4"	eWB0259-ASSY-#	eMS-4/100-25-ASSY-#	100 mm	25
6"	eWB0286-ASSY-#	eMS-6/150-10-ASSY-#	150 mm	10
6"	eWB0347-ASSY-#	eMS-6/150-10-R.1-ASSY-#	150 mm	10



**notes: eWB0340 & eWB0297 are for thinned wafers (<0.4mm)

Material code options:

Material	Code	SR
Conductive PP	eM-01-BLK	10e4-10e5
Natural PP	eM-08-NAT	n/a

[RETURN TO TABLE OF CONTENTS](#)

ePRO™ * WAFER SHIPPING BOXES

- Designed to hold 25 wafers by the edge
- Made from ultra-clean PP material
- 3 piece design includes Lid, Cassette, and Base
- Protective shipping OverPAKs available...[see products](#)

Product info:

Wafer Size	ePAK Description	Internal Diameter
4"	ePRO-4/100-25-ASSY-#	100 mm
4"	ePRO II-4/100-25-ASSY-#	100 mm
4"	ePRO III-4/100-25-ASSY-#	100 mm
**4"	ePRO-THIN-4/100-25-ASSY-#	100 mm
5"	ePRO-5/125-25-ASSY-#	125 mm
5"	ePRO II-5/125-25-ASSY-#	125 mm
5"	ePRO III-5/125-25-ASSY-#	125 mm
6"	ePRO-6/150-25-ASSY-#	150 mm
6"	ePRO II-6/150-25-ASSY-#	150 mm
6"	ePRO III-6/150-25-ASSY-#	150 mm
8"	ePRO-8/200-25-ASSY-#	200 mm
8"	ePRO II-8/200-25-ASSY-#	200 mm
8"	ePRO III-8/200-25-ASSY-#	200 mm

**notes: ePRO-THIN are for thinned wafers (<0.3mm)

Material code options:

Material	Code	SR
Natural PP	eM-08-NAT	n/a
PC	eM-12, eM-175	n/a



Please contact ePAK or your local agent to discuss the many ePRO™ options available to fit your requirements.

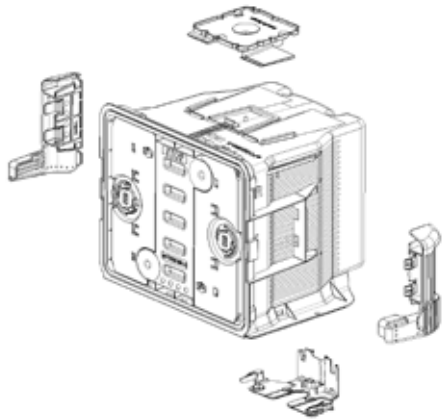
(PATENTS: US 7967146, US D639154, Taiwan M356220, Singapore 150443)

[RETURN TO TABLE OF CONTENTS](#)

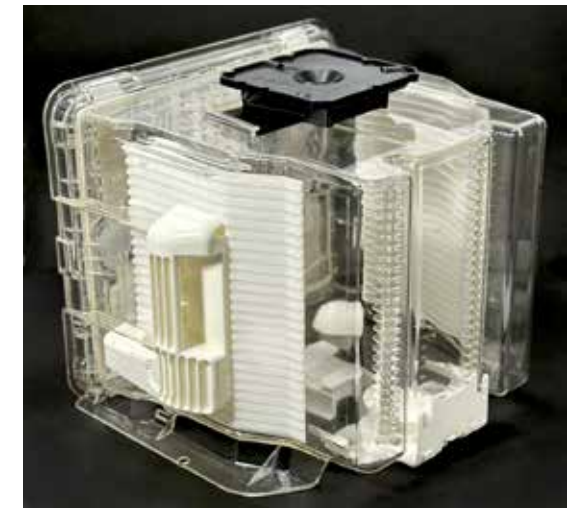


eFOSB300-A

(Front Opening Shipping Box - 300mm wafers)



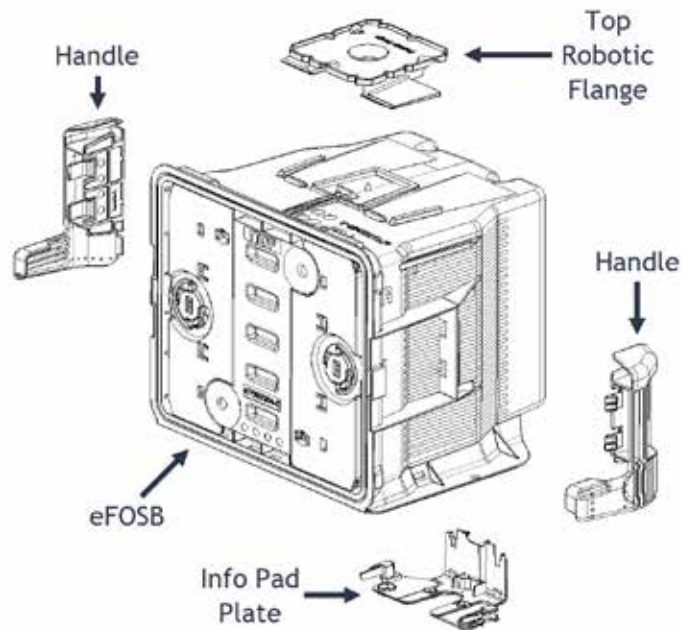
- SEMI/FIMS compliant
- Automated operation minimizes potential contamination from human interaction
- Manual opening and closing
- Ultrapure, low outgassing materials protect wafers
- Robust wafer retention ensures reduced particle generation
- Cleanable without requiring disassembly of door



[RETURN TO TABLE OF CONTENTS](#)

eFOSB300-A

(Front Opening Shipping Box - 300mm wafers)



Component
eFOSB
Handle (optional)
Robotic flange (optional)
Info tag plate (optional)
Info pads AB (optional)
Info pads CD (optional)

Option Combinations	Ordering Information		Component information				
	Order code	Description	Standard ASSY (eFOSB)	Manual Handle (H)	Top Robotic Flange (F)	Info-Pad Plate (I)	Empty weight
eFOSB, Handle, Robotic Flange, Info Tag Plate, Washed	eWB0531-ASSY-5-HFI-W	eFOSB-HFI	eWB0531-ASSY-5	eWB0526-HL/HR-X	eWB0522-X	eWB0527-X	4.9 kg
eFOSB, Handle, Robotic Flange, Info Tag Plate, As Molded	eWB0531-ASSY-5-HFI-AM	eFOSB-HFI	eWB0531-ASSY-5	eWB0526-HL/HR-X	eWB0522-X	eWB0527-X	4.9 kg

There are very many option variations and combinations that can be configured to meet your specific requirements. Please contact ePAK or your local agent for more information.

[RETURN TO TABLE OF CONTENTS](#)



- SEMI/FIMS compliant
- Automated operation minimizes potential contamination from human interaction
- Manual opening and closing
- Ultrapure, low outgassing, *ESD* materials protect wafers during processing
- Robust wafer retention ensures reduced particle generation
- Cleanable without requiring disassembly of door
- Diffuser Purge options

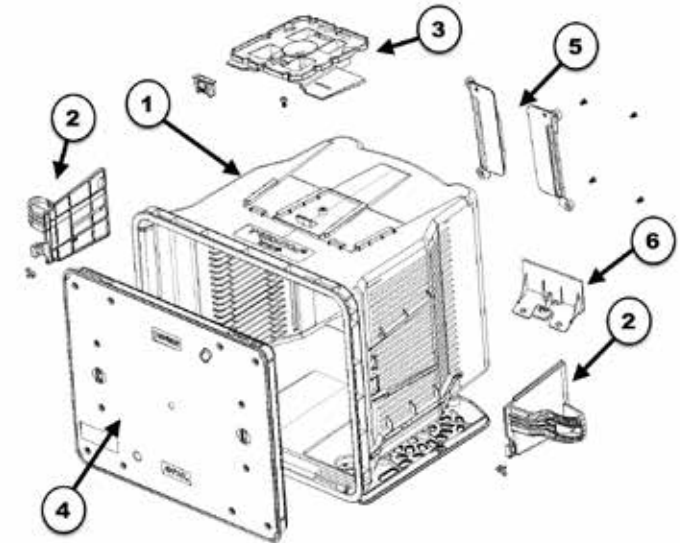


eFOUP300-A

(Front Opening Unified Pod - 300mm wafers)



Item	Component
1	Shell
2	Handles (optional)
3	Robotic flange (optional)
4	Cover
5	Card Holders (optional)
6	Info /RFID plate (optional)



Option Combinations	Ordering Information		Component information						
	Order code	Description	Standard ASSY (eFOUP)	Standard Cover/Door	Handles	Top Robotic Flange	Card Holder	Info/RFI D Plate	Empty weight
eFOUP, White Handle, Flange, Card Holder, RFID	eWB0685-ASSY-1-W	eFOUP300-A-ASSY-1-W	eWB0685-ASSY-1 (ORANGE TINT SHELL)	eWB0621-ASSY-1	eWB0635-HL/HR-eM-12-WHT	eWB0644-X	eWB0637-HL/HR-X	eWB0639/eWB0640	4.4 kg
eFOUP, White Handle, Flange, Card Holder, RFID	eWB0685-ASSY-1-AM	eFOUP300-A-ASSY-1-AM	eWB0685-ASSY-1 (ORANGE TINT SHELL)	eWB0621-ASSY-1	eWB0635-HL/HR-eM-12-WHT	eWB0644-X	eWB0637-HL/HR-X	eWB0639/eWB0640	4.7 kg
eFOUP, White Handle, Flange, Card Holder, RFID	eWB0685-ASSY-12-W	eFOUP300-A-ASSY-12-W	eWB0685-ASSY-6 (CLEAR SHELL)	eWB0621-ASSY-1	eWB0635-HL/HR-eM-12-WHT	eWB0644-X	eWB0637-HL/HR-X	eWB0639/eWB0640	4.4 kg
eFOUP, White Handle, Flange, Card Holder, RFID	eWB0685-ASSY-12-AM	eFOUP300-A-ASSY-12-AM	eWB0685-ASSY-6 (CLEAR SHELL)	eWB0621-ASSY-1	eWB0635-HL/HR-eM-12-WHT	eWB0644-X	eWB0637-HL/HR-X	eWB0639/eWB0640	4.7 kg

There are very many option variations and combinations that can be configured to meet your specific FOUP requirements. Please contact ePAK or your local agent for more information.

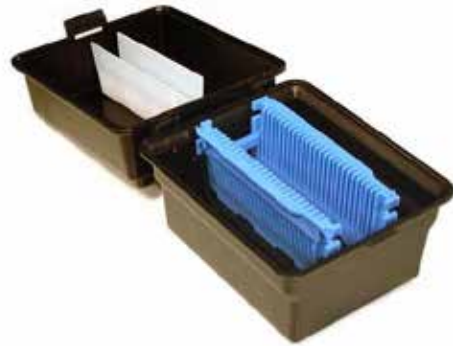
[RETURN TO TABLE OF CONTENTS](#)





2", 3" & 4" PROCESS BOATS &

(For Process Boat ordering information, see product details on Page 23)



ePB-2/50-25-x-y
inside
ePBX-2-ASSY-#



ePB-3/76-25-x-y
inside
ePBX-3-ASSY-#



ePB-4/100-25-x-y
inside
ePBX-4-ASSY-#

2", 3" & 4" Storage Box Product info:

Wafer Size	ePAK Order code	ePAK Description	Notes
2"	eWB0095-ASSY-#	ePBX-2-ASSY-#	Requires shelf to hold cassette, cushion available
3"	eWB0123-ASSY-#	ePBX-3-ASSY-#	Optional shelf for R.2, R.3 and R.6 cassettes, cushion available
3"	eWB0260-ASSY-#	ePBX-3-R.1-ASSY-#	Low height lid, no cushion available
3"	eWB0433-ASSY-#	ePBX-3-R.2-ASSY-#	3" Small body box, cushion available
4"	eWB0124-ASSY-#	ePBX-4-ASSY-#	Cushion available
4" (2 cassettes)	eWB0097-ASSY-#	ePBX-5/125-2-ASSY-#	5" x 2 cassette box with special shelf holds 2 x 4" cassettes

Material code info:

Material	Code	SR
Conductive Polypropylene (Black only)	eM-01-BLK	10e4-10e5
Polypropylene (Multiple Color Options à)	eM-08-(color code)	n/a

Color code info

BLU = Blue
GRN = Green
RED = Red
YLW = Yellow

[RETURN TO TABLE OF CONTENTS](#)



5" PROCESS BOATS & BOXES

(For ordering information, see product details on Pages 23-26)



ePB-5/125-25-x-y



ePB-5/125-25-R.1-eM-61-BRW



ePB-5/125-25-R.2-x-y



ePB-5/125-25-R.4-eM-47-BLK



ePB-5/125-25-R.5-x-y



ePBX-5/125-ASSY-#



ePBX-5/125-R.1-ASSY-#



ePBX-5/125-2-ASSY-#



[RETURN TO TABLE OF CONTENTS](#)

6" PROCESS BOATS & BOXES

(For ordering information, see product details on Pages 24-26)



ePB-6/150-25-x-y



ePB-6/150-25-R.1-x-y



ePB-6/150-25-R.2-eM-47-BLK



ePB-6/150-25-R.4-eM-56



ePB-6/150-25-R.6-x-y



ePB-6/150-25-R.9-x-y



ePB-6/150-12-x-y



ePB-6/150-15-x-y



ePB-6/150-18-x-y



ePB-6/150-18-R.1-eM-47-BLK



ePBX-6/150-ASSY-#



ePBX-6/150-R.1-ASSY-#



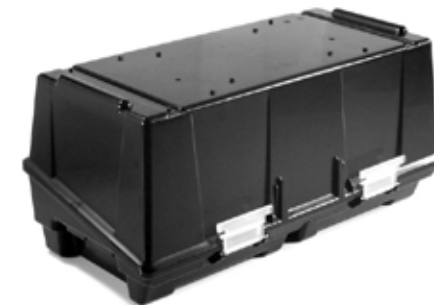
ePBX-6/150-R.3-ASSY-#



ePBX-6/150-R.5-ASSY-#



ePBX-6/150-R.10-ASSY-#



ePBX-6/150-2-ASSY-#



[RETURN TO TABLE OF CONTENTS](#)

8" PROCESS BOATS & BOXES

(For ordering information, see product details on Pages 25 - 27)



ePB-8/200-25-eM-45-BLK



ePB-8/200-25-R.2-x-



ePB-8/200-13-x-y



ePB-8/200-25-R.9-eM-47



ePBX-8/200-ASSY-#



ePBX-8/200-R.1-ASSY-#



ePBX-8/200-R.3-ASSY-#



ePBX-8/200-R.6-ASSY-#



[RETURN TO TABLE OF CONTENTS](#)

PFA PROCESS CASSETTES



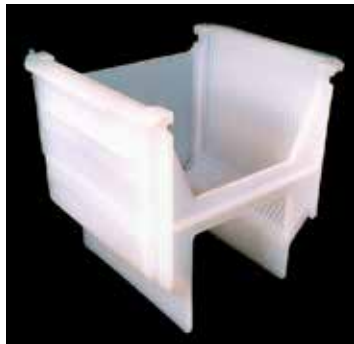
ePB-2/50-25-R.1-eM-39-NAT



ePB-3/76-25-R.6-eM-39-NAT



ePB-4/100-25-R.9-eM-39-NAT



ePB-6/150-25-R.8-eM-39-NAT



ePB-6/150-25-R.10-eM-39-NAT



ePB-8/200-25-R.6-eM-39-NAT



ePB-8/200-25-R.10-eM-39-NAT



ePB-6/150-18-R.2-eM-39-NAT



ePB-6/150-25-R.11-eM-39-NAT



[RETURN TO TABLE OF CONTENTS](#)



PROCESS BOATS

Wafer Size	ePAK Order Code	ePAK P/N Description	Materials available	Notes	Internal Diameter	Slots
2"	eWB0031-x-y	ePB-2/50-25-x-y	eM-01-BLK, eM-08-y, eM-56-NAT	-	50 mm	25
2"	eWB0316-eM-39-NAT	ePB-2/50-25-R.1-eM-39-NAT	eM-39-NAT	-	50 mm	25
2.5"	eWB0405-eM-39-NAT	ePB-2.5/63.5-25-eM-39-NAT	eM-39-NAT	-	63.5mm	25
3"	eWB0032-x-y	ePB-3/76-25-x-y	eM-01-BLK, eM-08-y, eM-56-NAT	-	76 mm	25
3"	eWB0092-x-y	ePB-3/76-25-R.2-x-y	eM-01-BLK, eM-08-y, eM-56-NAT	-	76 mm	25
3"	eWB0096-x-y	ePB-3/76-25-R.3-x-y	eM-01-BLK, eM-08-y, eM-56-NAT	-	76 mm	25
3"	eWB0276-x-y	ePB-3/76-25-R.4-x-y	eM-01-BLK, eM-08-y, eM-56-NAT	-	76 mm	25
3"	eWB0280-eM-56-NAT	ePB-3/76-25-R.5-eM-56	eM-56-NAT	(note: 3" boat in a 5" Outline)	76 mm	25
3"	eWB0306-eM-39-NAT	ePB-3/76-25-R.6-eM-39-NAT	eM-39-NAT	-	76 mm	25
4"	eWB0049-x-y	ePB-4/100-25-x-y	eM-01-BLK, eM-08-y, eM-56-NAT	-	100 mm	25
4"	eWB0125-eM-56-NAT	ePB-4/100-25-R.2-x-y	eM-56-NAT	(note: 4" boat in a 5" Outline)	100 mm	25
4"	eWB0277-x-y	ePB-4/100-25-R.6-x-y	eM-01-BLK, eM-08-y, eM-56-NAT	-	100 mm	25
4"	eWB0308-x-y	ePB-4/100-25-R.8-x-y	eM-01-BLK, eM-08-y, eM-56-NAT	-	100 mm	25
4"	eWB0309-eM-39-NAT	ePB-4/100-25-R.9-eM-39-NAT	eM-39-NAT	"-W" Window Option available	100 mm	25
4"	eWB0604-eM-39-NAT	ePB-4/100-20-eM-39-NAT	eM-39-NAT	-	100 mm	20
5"	eWB0088-x-y	ePB-5/125-25-x-y	eM-01-BLK, eM-08-y, eM-56-NAT	Window is Standard	125 mm	25
5"	eWB0098-eM-61-BRW	ePB-5/125-25-R.1-eM-61-BRW	eM-61-BRW	"-N-" Notch Option available	125 mm	25
5"	eWB0114-x-y	ePB-5/125-25-R.2-x-y	eM-01-BLK, eM-08-y, eM-56-NAT	-	125 mm	25
5"	eWB0229-eM-47-BLK	ePB-5/125-25-R.4-eM-47-BLK	eM-47-BLK	"-N-" Notch Option available	125 mm	25
5"	eWB0300-x-y	ePB-5/125-25-R.5-x-y	eM-01-BLK, eM-08-y, eM-56-NAT	-	125 mm	25
5"	eWB0536-eM-39	ePB-5/125-25-R.6-eM-39	eM-39	5" boat in a 6" outline	125mm	25

Material code info ("x" in P/N):

Material	Code	SR
Conductive Polypropylene (Black color only)	eM-01-BLK	10e4-10e5
Polypropylene (Multiple Color Options à)	eM-08-y	n/a
PFA (No color option)	eM-39-NAT	n/a
PP+PTFE+ CF (Dark Grey color only)	eM-45-BLK	10e4-10e10
PEEK + CF (No color option)	eM-47-BLK	≤10e9
Polyvinylidene Difluoride (PVDF, Natural color only)	eM-56-NAT	n/a

Color code info (-y in P/N)

NAT = Natural(no color added)
 BLU = Blue
 GRN = Green
 RED = Red
 YLW = Yellow

[RETURN TO TABLE OF CONTENTS](#)



6" Process Boats:

Wafer Size	ePAK Order Code	ePAK P/N Description	Materials Available	Notes and/or Alternative ePAK P/N (-N) =with Notch Option (-W) =with Window Option (-H) =with Handle Option	Internal Diameter	Slots
6"	eWB0051-x-y	ePB-6/150-25-x-y	eM-01-BLK, eM-08-y, eM-56-NAT	ePB-6/150-25-N-x-y	150 mm	25
6"	eWB0052-x-y	ePB-6/150-25-R.1-x-y	eM-01-BLK, eM-08-y, eM-56-NAT	ePB-6/150-25-R.1-N-x-y	150 mm	25
6"	eWB0101-N-eM-47-BLK	ePB-6/150-25-R.2-N-eM-47-BLK	eM-47-BLK	Notch is Standard	150 mm	25
6"	eWB0153-eM-56	ePB-6/150-25-R.4-eM-56	eM-56-NAT	ePB-6/150-25-R.4-N-eM-56	150 mm	25
6"	eWB0188-x-y	ePB-6/150-25-R.6-x-y	eM-01-BLK, eM-08-y, eM-56-NAT	ePB-6/150-25-R.6-N-x-y	150 mm	25
6"	eWB0304-eM-39-NAT	ePB-6/150-25-R.8-eM-39-NAT	eM-39-NAT	ePB-6/150-25-R.8-W-eM-39-NAT	150 mm	25
6"	eWB0307-x-y	ePB-6/150-25-R.9-x-y	eM-01-BLK, eM-08-y, eM-56-NAT	ePB-6/150-25-R.9-W-x-y	150 mm	25
6"	eWB0318-eM-39-NAT	ePB-6/150-25-R.10-eM-39-NAT	eM-39-NAT	Low Profile	150 mm	25
6"	eWB0327-eM-39-NAT	ePB-6/150-25-R.11-eM-39-NAT	eM-39-NAT	n/a	150 mm	25
6"	eWB0342-eM-39-NAT	ePB-6/150-25-R.12-eM-39-NAT	eM-39-NAT	Low Profile, No H-bar	150mm	25
6"	eWB0135-x-y	ePB-6/150-12-x-y	eM-01-BLK, eM-08-y, eM-56-NAT	ePB-6/150-12-N-x-y	150 mm	12
6"	eWB0359-x-y	ePB-6/150-15-x-y	eM-01-BLK, eM-08-y	Short length cassette, standard slots	150mm	15
6"	eWB0416-x	ePB-6/150-18-x-y	eM-01-BLK, eM-08-y	ePB-6/150-18-N-x-y	150mm	18
6"	eWB0417-eM-47-BLK	ePB-6/150-18-R.1-eM-47-BLK	eM-47-BLK	ePB-6/150-18-R.1-N-eM-47-BLK	150mm	18
6"	eWB0372-eM-39-NAT	ePB-6/150-20-R.1-eM-39-NAT	eM-39-NAT	n/a	150mm	20
6"	eWB0495-eM-47-BLK	ePB-6/150-25-R.16-eM-47-BLK	eM-47-BLK	ePB-6/150-25-R.16-N-eM-47-BLK	150mm	25
6"	eWB0537-eM-157-x	ePB-6/150-25-R.21-eM-157-x	eM-157-x	Square top corner	150mm	25
6"	eWB0554-eM-157-x	ePB-6/150-25-R.23-eM-157-x	eM-157-x	Chamfered top corners	150mm	25
6"		ePB-6/150-25-R.27-eM-39-NAT	eM-39-NAT	n/a	150mm	25
159 mm	eWB0207-eM-47-BLK	ePB-6/159-25-eM-47-BLK	eM-47-BLK	ePB-6/159-25-N-eM-47-BLK	159 mm	25
159 mm	eWB0208-eM-39-NAT	ePB-6/159-25-R.1-eM-39-NAT	eM-39-NAT	ePB-6/159-25-R.1-N-eM-39-NAT	159 mm	25
159 mm	eWB0575-eM-22-BLK	ePB-6/159-12-R.6-eM-22-BLK	eM-22-BLK	ePB-6/159-12-R.6-N-eM-22-BLK	159 mm	12

Material code info ("x" in P/N):

Material	Code	SR	Material	Code	SR
Conductive Polypropylene (Black color only)	eM-01-BLK	10e4-10e5	PEEK + CF (No color option)	eM-47-BLK	≤10e9
Polypropylene ("-y" Multiple Color Options)	eM-08-y	n/a	PVDF (Natural color only)	eM-56-NAT	n/a
PFA (No color option)	eM-39-NAT	n/a	Polycarbonate +CF	eM-157-x	10e4-10e7
PP+PTFE+ CF (Dark Grey color only)	eM-45-BLK	10e4-10e10			

[RETURN TO TABLE OF CONTENTS](#)





PROCESS BOATS (continued)

8" Process Boats:

Wafer Size	ePAK Order Code	ePAK P/N Description	Materials Available	Notes and/or Alternative ePAK P/N (-N) =with Notch Option (-W) =with Window Option (-H) =with Handle Option	Internal Diameter	Slots
8"	eWB0045-eM-45-BLK	ePB-8/200-25-eM-45-BLK	eM-45-BLK	n/a	200 mm	25
8"	eWB0090-x-y	ePB-8/200-25-R.2-x-y	eM-01-BLK, eM-08-y, eM-56-NAT	n/a	200 mm	25
8"	eWB0182-x-y	ePB-8/200-13-x	eM-01-BLK, eM-08-y, eM-56-NAT	n/a	200 mm	13
8"	eWB0220-eM-39-NAT	ePB-8/200-25-R.6-eM-39-NAT	eM-39-NAT	n/a	200 mm	25
8"	eWB0382-eM-47-BLK	ePB-8/200-25-R.9-eM-47-BLK	eM-47-BLK	ePB-8/200-25-R.9-H-eM-47-BLK	200 mm	25
8"	eWB0385-eM-39-NAT	ePB-8/200-25-R.10-eM-39-NAT	eM-39-NAT	Low Profile	200 mm	25
8"	eWB0456-eM-157-x	ePB-8/200-25-R.12-eM-157-x	eM-157-x	RFID option	200mm	25
8"	eWB0533-eM-47-BLK	ePB-8/200-25-R.13-eM-47	eM-47-BLK	eWB0382 but without H-Bar flanges	200mm	25
8"	eWB0559-eM-170-BLK	ePB-8/200-25-R.14-eM-170	eM-170-BLK	ePB-8/200-25-R.14-H-eM-170-BLK	200mm	25
8"	eWB0548-eM-157-x	ePB-8/203-13-eM-157-x	eM-157-x	RFID option	203mm	13



12" Process Boats:

12"	eWB0519-ASSY-X	ePB-12/300-25-ASSY-X	eM-175-CLR/eM-123-NAT	RFID option	300mm	25
-----	----------------	----------------------	-----------------------	-------------	-------	----

Material code info: ("x" in P/N):

Material	Code	SR	Material	Code	SR
Conductive Polypropylene (Black color only)	eM-01-BLK	10e4-10e5	PEEK + CF (No color option)	eM-47-BLK	≤10e9
Polypropylene ("-y" Multiple Color Options)	eM-08-y	n/a	PVDF (Natural color only)	eM-56-NAT	n/a
PFA (No color option)	eM-39-NAT	n/a	Polycarbonate	eM-175-CLR	n/a
PP+PTFE+ CF (Dark Grey color only)	eM-45-BLK	10e4-10e10	Polycarbonate +CF	eM-157-x	10e4-10e7

[RETURN TO TABLE OF CONTENTS](#)



PROCESS BOAT STORAGE BOXES



- I Storage Boxes are Stackable
 - I Available in many material options:
 - eM-01-BLK is equivalent to Entegris® Stat-Pro® 100 (PP + CP) material*
 - eM-08-NAT is natural PP material with many color options
 - eM-46-BLK is equivalent to Entegris® Stat-Pro® 175 (PP + CF) material*
- * (PP = Polypropylene, CF=Carbon Fiber, CP=Carbon Powder, PTFE= Polytetrafluoroethylen)

Product info:

Wafer Size	ePAK Order Code	ePAK P/N Description	Compatible with ePAK Process Cassettes
5"	eWB0078-ASSY-#	ePBX-5/125-ASSY-#	eWB0088-x-y, eWB0114-x-y
5"	eWB0127-ASSY-#	ePBX-5/125-R.1-ASSY-#	eWB0088-x-y, eWB0114-x-y
5"	eWB0097-ASSY-#	ePBX-5/125-2-ASSY-#	eWB0088-x-y, eWB0114-x-y eWB00300-x-y (BOX HOLDS 2 BOATS)
6"	eWB0070-ASSY-#	ePBX-6/150-ASSY-#	eWB0051-x-y, eWB0052-x-y, eWB0135-x-y
6"	eWB0073-ASSY-#	ePBX-6/150-R.1-ASSY-#	eWB0051-x-y, eWB0052-x-y, eWB0135-x-y
6"	eWB0111-ASSY-#	ePBX-6/150-2-ASSY-#	eWB0051-x-y, eWB0052-x-y, eWB0135-x-y (BOX HOLDS 2 BOATS)
6"	eWB0099-ASSY-#	ePBX-6/150-R.3-ASSY-#	eWB0051-x-y, eWB0052-x-y, eWB0135-x-y
6"	eWB0159-ASSY-#	ePBX-6/150-R.5-ASSY-#	eWB0051-x-y, eWB0052-x-y, eWB0135-x-y
6"	eWB0336-ASSY-#	ePBX-6/150-R.10-ASSY-#	eWB0051-x-y, eWB0052-x-y, eWB0135-x-y
6"	eWB0358-ASSY-#	ePBX-6/150-R.11-ASSY-#	eWB0359-x-y
6"	eWB0480-ASSY-#	ePBX-6/150-2-R.4-ASSY-#	
159 mm	eWB0213-ASSY-#	ePBX-6/159-ASSY-#	eWB0207-eM-47-BLK, eWB0208-eM-39-NAT

***Please use Storage Box ePBX-8/200-R.1-eM-46 for Process Cassette PN: eWB0182-x-y (ePB-8/200-13-x) Please confirm with your sales person.*

Material code info:

Material	Code	SR
Conductive Polypropylene (Black only)	eM-01-BLK	10e4-10e5
Polypropylene (Multiple Color Options à)	eM-08-NAT	n/a
PP+CF (Black only)	eM-46-BLK	10e4-10e10
PC+CF	eM-157-BLK	10e4-10e7

Color code info

NAT = Natural
 BLU = Blue
 GRN = Green
 RED = Red
 YLW = Yellow

[RETURN TO TABLE OF CONTENTS](#)

PROCESS BOAT STORAGE BOXES

(CONTINUED.)



- I Storage Boxes are Stackable
- I Available in many material options:
 - eM-01-BLK is equivalent to Entegris® Stat-Pro® 100 (PP + CP) material*
 - eM-08-NAT is natural PP material with many color options
 - eM-46-BLK is equivalent to Entegris® Stat-Pro® 175 (PP + CF) material*
 - *(PP = Polypropylene, CF=Carbon Fiber, CP=Carbon Powder, PTFE= Polytetrafluoroethylene)

Product info:

Wafer Size	ePAK Order Code	ePAK P/N Description	Compatible with ePAK Process Cassettes
8"	eWB0094-ASSY-#	ePBX-8/200-ASSY-#	eWB0045-x-y, eWB0090-x-y
8"	eWB0100-ASSY-#	ePBX-8/200-R.1-ASSY-# **	eWB0045-x-y, eWB0090-x-y, eWB0182-x-y** Option eWB0534SH (shelf) to load 6" PB (eWB0051, eWB0052, eWB0135 & eWB0537)
8"	eWB0221-ASSY-#	ePBX-8/200-R.3-ASSY-#	eWB0045-x-y, eWB0090-x-y,
8"	eWB0338-ASSY-#	ePBX-8/200-R.6-ASSY-#	eWB0045-x-y, eWB0090-x-y,
8"	eWB0367-ASSY-#	ePBX-8/200-R.7-ASSY-#	eWB0045-x-y, eWB0090-x-y, Option eWB0534SH (shelf) to load 6" PB (eWB0051, eWB0052, eWB0135 & eWB0537)
8"	eWB0451-ASSY-#	ePBX-8/200-R.10-ASSY-#	Option eWB0534SH (shelf) to load 6" PB (eWB0051, eWB0052, eWB0135 & eWB0537)
8"	eWB0481-ASSY-#	ePBX-8/200-R.12-ASSY-#	

Material code info:

Material	Code	SR
Conductive Polypropylene (Black only)	eM-01-BLK	10e4-10e5
Polypropylene (Multiple Color Options à)	eM-08-NAT	n/a
PP+CF (Black only)	eM-46-BLK	10e4-10e10
PC+CF	eM-157-BLK	10e4-10e7

Color code info

NAT = Natural
 BLU = Blue
 GRN = Green
 RED = Red
 YLW = Yellow

[RETURN TO TABLE OF CONTENTS](#)

ENVELOPES FOR STORAGE BOXES

- Envelopes are manufactured using clear PVC
- Snaps are manufactured using white Nylon (eM-64)



Envelopes info:

ePAK Order code	Description	Anti-Static	Fits Boxes:
eOP0167-ASSY-1	2"/3"/4" Envelope-ASSY-1	YES	eWB0095, eWB0123, eWB0124, eWB0260/Competitor
eOP0167-ASSY-2	2"/3"/4" Envelope-ASSY-2	NO	eWB0095, eWB0123, eWB0124, eWB0260/Competitor
eOP0168-ASSY-1	5" Envelope-ASSY-1	YES	eWB0078, eWB0127/Competitor
eOP0168-ASSY-2	5" Envelope-ASSY-2	NO	eWB0078, eWB0127/Competitor
eOP0169-ASSY-1	6" Envelope-ASSY-1	YES	eWB0073, eWB0099, eWB0159, eWB0185/Competitor
eOP0169-ASSY-2	6" Envelope-ASSY-2	NO	eWB0073, eWB0099, eWB0159, eWB0185/Competitor
eOP0197-ASSY-1	6" Envelope R.1-ASSY-1	YES	eWB0073, eWB0099, eWB0159, eWB0185/Competitor
eOP0197-ASSY-2	6" Envelope R.1-ASSY-2	NO	eWB0073, eWB0099, eWB0159, eWB0185/Competitor
eOP0256-ASSY-1	6" Envelope R.2-ASSY-1	YES	eWB0073, eWB0099, eWB0159, eWB0185/Competitor
eOP0256-ASSY-2	6" Envelope R.2-ASSY-2	NO	eWB0073, eWB0099, eWB0159, eWB0185/Competitor
eOP0185-ASSY-1	8" Envelope-ASSY-1	NO	eWB0094, eWB0221/Competitor

Material code options:

Material	Code	SR
White Nylon (Snaps)	eM-64	n/a
Clear PVC	eM-68	n/a
Anti-Static Clear PVC	eM-66	<10e11

[RETURN TO TABLE OF CONTENTS](#)

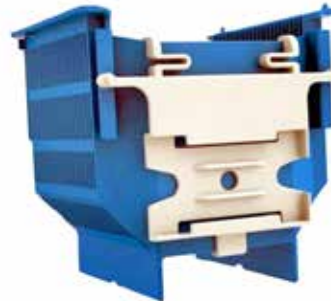
BADGE HOLDERS & CLIPS



BADGE HOLDER
Welded to Storage box



CARD HOLDER
Attached to
mWB0070



eCH6-A
Attached to Process Boat



ePB-4/100-Holder-x
& **eV8-78x25-Carrier-x**
Attached to 4" Process Boat



CARD HOLDER-R.1
Welded to
Process Boat



mOP0162 Assembly
(Attached to Box Lid)



mOP0370
(Attached to Box Lid)

Order Code	Product Description	Application
eOP0162(P)-eM-34-BLK or eM-08-y	Storage Box Clip (Pedestal)-eM-34	Storage Box
eOP0162(S)-eM-34-BLK or eM-08-y	Storage Box Clip (Spring)-eM-34	Storage Box
eOP0163-eM-08-y	BADGE HOLDER	Multiple Application
eOP0184-eM-01-BLK	CARD HOLDER	mWB0070
eOP0392-eM-01-BLK/eM-46-BLK	CARD HOLDER-R.1	Multiple Application
eOP0206-(eM-01-BLK or eM-08-y)	eCH6-A	6" Process Cassettes (except PFA)
eOP0370-eM-73	Storage Box Clip	mWB0078
eOP0718-x	6" Paper Holder-x	mWB0073
eOP0813-x & eVT1898-x	ePB-4/100-Holder-x & eV8-78x25-Carrier-x	4" Process Cassette

Color code
(-y in P/N)

NAT = Natural
BLU = Blue
GRN = Green
RED = Red
YLW = Yellow

[RETURN TO TABLE
OF CONTENTS](#)

HANDLES FOR PROCESS BOATS



eOP0171



eOP0243



eOP0179



eOP0202-8-ASSY-2



eOP0202-8-ASSY-3

For Boat sizes	ePAK Order code	Description	Handle Style	Compatible Process Boats
2"	eOP0171-2-ASSY-1	2" HANDLE ASSY-1	Squeeze with lock bar	eWB0031, eWB0316
2.5"	eOP0171-2.5-ASSY-1	2.5" HANDLE ASSY-1	Squeeze with lock bar	eWB0405
3"	eOP0171-3-ASSY-1	3" HANDLE ASSY-1	Squeeze with lock bar	eWB0092, eWB0096, eWB0306
4"	eOP0171-4-ASSY-1	4" HANDLE ASSY-1	Squeeze with lock bar	eWB0049, eWB0277, eWB0308, eWB0309
5"	eOP0171-5-ASSY-1	5" HANDLE ASSY-1	Squeeze with lock bar	eWB0088, eWB0114, eWB00229, eWB00300
5"	eOP0179-5-ASSY-1	5" HANDLE R.1 ASSY-1	Slingshot	eWB0088, eWB0114, eWB00229, eWB00300
6"	eOP0171-6-ASSY-1	6" HANDLE ASSY-1	Squeeze with lock bar	eWB0051, eWB0052, eWB0101, eWB0135, eWB0153, eWB0188, eWB0304, eWB0307, eWB0327,
6"	eOP0179-6-ASSY-1	6" HANDLE R.1 ASSY-1	Slingshot	eWB0051, eWB0052, eWB0101, eWB0135, eWB0153, eWB0188, eWB0304, eWB0307, eWB0327,
6"	eOP0243-eM-39-NAT	6" HANDLE-R.3-eM-39-NAT	Squeeze with support bar	eWB0051, eWB0052, eWB0101, eWB0135, eWB0153, eWB0188, eWB0304, eWB0307, eWB0318, eWB0327
159mm	eOP0171-159-ASSY-1	159 HANDLE ASSY-1	Squeeze with lock bar	eWB0207, eWB0208
8"	eOP0202-8-ASSY-2	8" HANDLE ASSY-2	Squeeze with lock bar	eWB0045, eWB0090, eWB0182, eWB0220, eWB0380, eWB0382,
8"	eOP0202-8-ASSY-3	8" HANDLE ASSY-3	Squeeze with lock bar	eWB0385

Material codes		
Material	Code	SR
PFA	eM-39-NAT	n/a

[RETURN TO TABLE OF CONTENTS](#)

"COIN STYLE" SINGLE WAFER SHIPPERS*

Wafer Size	ePAK Order Code	ePAK Description	Internal Diameter	Std Pack Quantity
1" (25mm)	eWB0091-ASSY-#	eCT1-25-ASSY-#	25.4 mm	100 /carton
1.5" (38mm)	eWB0325-ASSY-#	eCT1.5-38-ASSY-#	39.6 mm	100 /carton
2" (50mm)	eWB0021-ASSY-#	eCT2-50-ASSY-#	52 mm	100 /carton
2.5" (63mm)	eWB0328-ASSY-#	eCT2.5-63-ASSY-#	65.5 mm	100 /carton
3" (76mm)	eWB0022-ASSY-#	eCT3-76-ASSY-#	78.6 mm	100 /carton
3" (76mm) (3)	eWB0509-ASSY-#	eCT3-76-R.1-ASSY-#	76.7mm	100 /carton
3" (76mm)	eWB0572-ASSY-#	eCT3-76-R.3-ASSY-#	78.6 mm	100 /carton
3.25" (82mm)	eWB0329-ASSY-#	eCT3.25-82-ASSY-#	85 mm	100 /carton
3.54" (90mm)	eWB0330-ASSY-#	eCT3.54-90-ASSY-#	92 mm	100 /carton
4" (100mm)	eWB0024-ASSY-#	eCT4-100-ASSY-#	104 mm	100 /carton
4" (100mm) (1)	eWB0192-ASSY-#	eCT4-100-R.2-ASSY-#	104 mm	100 /carton
4" (100mm) (3)	eWB0404-ASSY-#	eCT4-100-R.3-ASSY-#	100.6 mm	100 /carton
4" (100mm)	eWB0573-ASSY-#	eCT4-100-R.4-ASSY-#	104 mm	100 /carton
5" (125mm)	eWB0060-ASSY-#	eCT5-125-ASSY-#	127 mm	100 /carton
6" (150mm)	eWB0025-ASSY-#	eCT6-150-ASSY-#	152 mm	100 /carton
6" (150mm) (1)	eWB0281-ASSY-#	eCT6-150-R.1-ASSY-#	152 mm	100 /carton
6" (150mm) (2)	eWB0320-ASSY-#	eCT6-150-R.2-ASSY-#	152 mm	100 /carton
6" (150mm)	eWB0574-ASSY-#	eCT6-150-R.4-ASSY-#	152 mm	100 /carton



Notes:

- (1) Positive Locking Lid
- (2) Positive Locking Lid, Larger Label Area
- (3) Designed for Thin / Fragile wafers

Material code options:

Material	Code	SR
Natural PP	eM-08-NAT	n/a
LDPE (spring option only)	eM-11-NAT	n/a
Conductive PP	eM-01-BLK	10e4-10e5

(*PATENT PENDING)

[RETURN TO TABLE OF CONTENTS](#)



External packaging solution for our popular 2, 3, 4, and 6 inch Coin Style Single Wafer Shippers

Product Information:

- For the 2" Coin Style Shippers: 5 pcs per layer/15 pcs per box
- For the 3" Coin Style Shippers: 3 pcs per layer/ 9 pcs per box
- For the 4" Coin Style Shippers: 2 pcs per layer/ 6 pcs per box
- For the 6" Coin Style Shippers: 3 pcs per layer/ 9 pcs per box

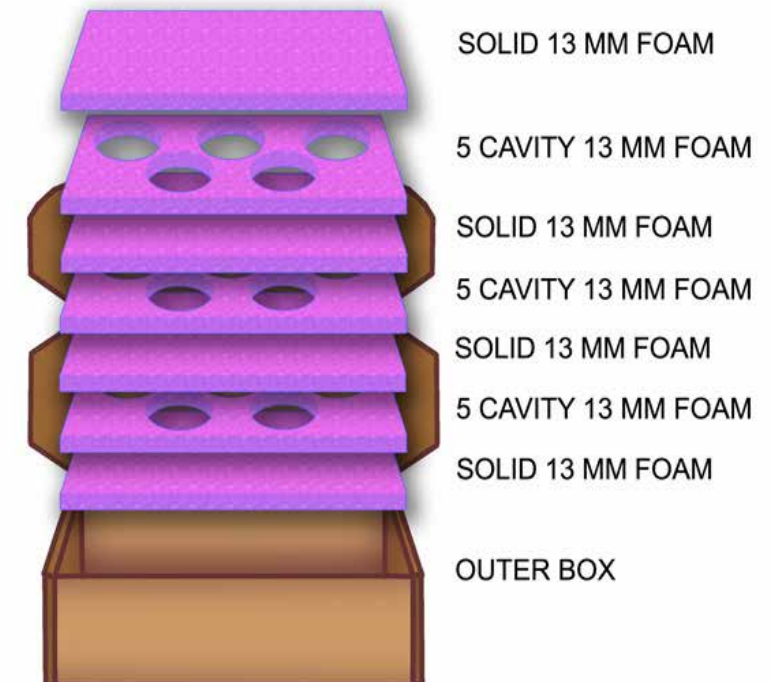
Each MASTERPAK™ contains:

- 1 pcs - cardboard outer box
- 3 pcs - Antistatic PE foam with cavities for shippers
- 4 pcs - Antistatic PE foam cushion layer-Solid

Ordering Information:

Wafer Size	ePAK Order Code	ePAK Description	Shippers per box	Foam Thickness
2"	eMP0001	MASTERPAK-2	15	13 mm
3"	eMP0002	MASTERPAK-3	9	13 mm
4"	eMP0003	MASTERPAK-4	6	13 mm
6"	eMP0010	MASTERPAK-6	9	13 mm

SHOWING: MASTERPAK-2



Minimum Order Quantity:

20 Masterpaks™

Copyright © 2003 ePAK International, Inc.

[RETURN TO TABLE OF CONTENTS](#)



SINGLE WAFER SHIPPERS

(INJECTION MOLDED)



Clamshell Style Shippers - Hinged Single wafer shippers

Wafer Size	ePAK Order Code	ePAK Description	Internal Diameter	Internal Height	Std Pack Quantity
6" (150mm)	eWB0017-ASSY-#	eCT6-150-0.7-ASSY-#	150 mm	0.7 mm	15/carton
8" (200mm)	eWB0016-ASSY-#	eCT8-200-0.7-ASSY-#	200 mm	0.7 mm	10/carton

Material code options:

Material	Code	SR
Clear PC	eM-12-TRA	n/a
Conductive PC	eM-22-BLK	10e2-10e6



[RETURN TO TABLE OF CONTENTS](#)

SINGLE WAFER SHIPPERS

(INJECTION MOLDED)



300mm



450mm

Coinstack Style Shippers – Single wafer shippers (Base with separate cover)

Wafer Size	ePAK Order Code	ePAK Description	Internal Diameter	Internal Height	Std Pack Quantity
12" (300mm)	eWB0053-ASSY-#	eCT12-300-0.8-ASSY-#	300 mm	0.8 mm	10/carton
18" (450mm)	eWB0210-ASSY-#	eCT-450-0.7-ASSY-#	450 mm	0.7 mm	10/carton

Material code options:

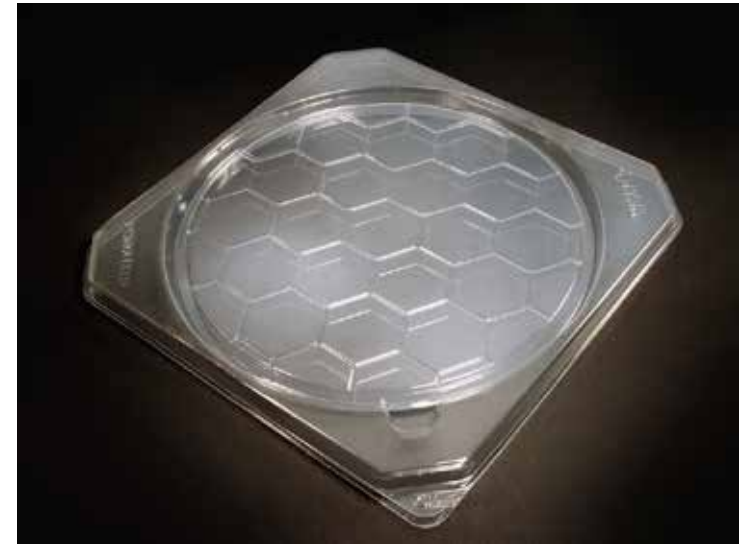
Material	Code	SR
Natural PP	eM-08-NAT	n/a
Conductive PP	eM-01-BLK	10e4-10e5



[RETURN TO TABLE OF CONTENTS](#)

SINGLE WAFER SHIPPERS

(VACUUM-FORMED)



Vacuum Formed Shippers – Single wafer shippers

Wafer Size	ePAK Order Code	ePAK Description	Internal Diameter	Std Pack Quantity
8" (200mm)	eVT1605-x	eV10-8/200-ASSY-#	200 mm	40/carton
12" (300mm)	eVT1415-x	eV9-12/300-X	300 mm	20/carton

Material code options: (-x in P/N):

Material	Code	SR
Proprietary conductive PS	eM-20-BLK	10e4-10e11
Clear PS material	eM-21-CLR	N/A
Anti-Static coated PS	eM-23	10e8-10e12
Clear, A/S coated, APET	eM-25	10e7-10e11

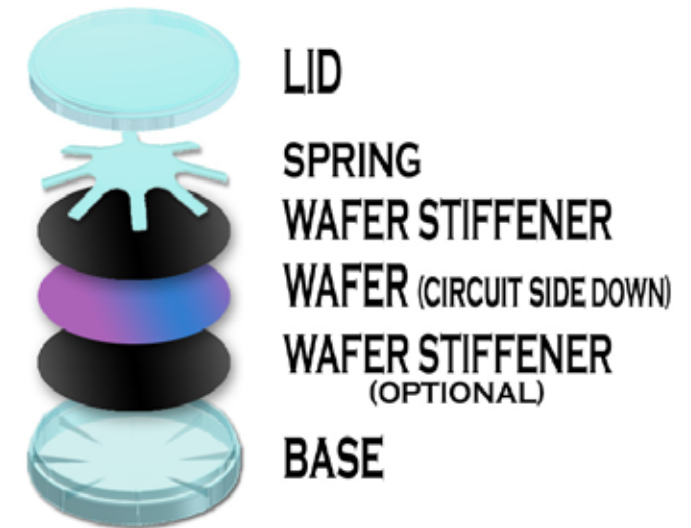
[RETURN TO TABLE OF CONTENTS](#)



Wafer Stiffener – Support system for ultra-thin, brittle wafers

- Proprietary, ultra-pure material
- Adds rigidity to sensitive ultra-thin wafers

Wafer Size	ePAK Order Code	ePAK Description	Stiffener Diameter	Stiffener Thickness	Std Pack Quantity
1"	eVT1128-x	eWV1-25-0.25-x	25 mm	0.25 mm	100/pack
1"	eVT1505-x	eWV1-25-0.4-x	25 mm	0.40 mm	100/pack
2"	eVT0171-x	eWV2-50-0.25-x	50 mm	0.25 mm	100/pack
2"	eVT0190-x	eWV2-50-0.4-x	50 mm	0.40 mm	100/pack
3"	eVT0191-x	eWV3-76-0.25-x	76 mm	0.25 mm	100/pack
3"	eVT0192-x	eWV3-76-0.4-x	76 mm	0.40 mm	100/pack
3"	eVT0193-x	eWV3-76-0.5-x	76 mm	0.50 mm	100/pack
4"	eVT0194-x	eWV4-100-0.4-x	100 mm	0.40 mm	50/pack
4"	eVT0195-x	eWV4-100-0.6-x	100 mm	0.60 mm	50/pack
6"	eVT0196-x	eWV6-150-0.4-x	150 mm	0.40 mm	50/pack
6"	eVT0197-x	eWV6-150-0.6-x	150 mm	0.60 mm	50/pack
6"	eVT0206-x	eWV6-150-0.8-x	150 mm	0.80 mm	50/pack
8"	eVT0198-x	eWV8-200-0.6-x	200 mm	0.60 mm	50/pack
8"	eVT0207-x	eWV8-200-0.8-x	200 mm <td 0.80 mm	50/pack	
12"	eVT0199-x	eWV12-300-0.8-x	300 mm	0.80 mm	50/pack



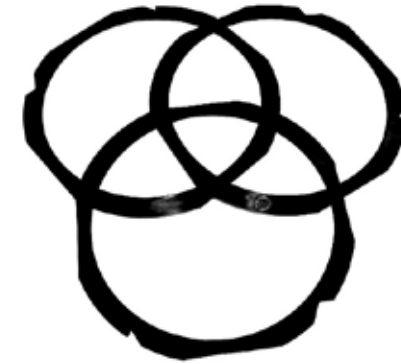
Material code info (–x in P/N):

Material	Code	SR
Proprietary conductive PS	eM-20-BLK	10e4-10e11

(*PATENT PENDING)

[RETURN TO TABLE OF CONTENTS](#)

PLASTIC FLEX FRAMES



- Designed for 100, 125, 150, 200 and 300 mm wafers
- § Low cost alternative to metal flex frames
- § Designed to be used one time and then discarded
- § Of special interest to those who ship wafers to customers on flex frames
 - No need to bear freight cost to return heavy metal frame
 - No need for cleaning metal frame before reuse
- Call for further details

Plastic Flex Frames – For shipping wafers mounted on tape

ePAK Order Code	ePAK Description	Flat to Flat	Internal Diameter	Internal Height	Std Pack Quantity	Available	Fits Into Flex Frame Shipper
eOP0863-eM-72	eFF5-125-1.8-eM-72	184mm	160mm	1.80mm	200/carton	now	
eOP0043-eM-59	eFF6-150-2.5-eM-59	217mm	194 mm	2.50 mm	200 /carton	NOW	eVT0415-x
eOP0067-eM-59	eFF6-150-2.5-R.1-eM-59	217mm	194 mm	2.50 mm	200 /carton	NOW	eVT0415-x
eOP0209-eM-89	eFF6-150-2.2-R.3-eM-89	215.9mm	185 mm	2.2 mm	200 /carton	NOW	eVT0415-x
eOP0304-eM-59	eFF6-150-2-R.6-eM-59	195mm	174 mm	2.0 mm	200 /carton	NOW	eVT1479-x
eOP0319-eM-59	eFF6-150-2.0-R.7-eM-59	212mm	194 mm	2.0 mm	200 /carton	NOW	eVT0302 & eVT1395
eOP0437-eM-59	eFF6-150-2.2-R.8-eM-59	216mm	185 mm	2.2 mm	200 /carton	NOW	eVT0415-x
eOP0091-eM-59	eFF-200-2.0-R.2-eM-59	276mm	250 mm	2.0 mm	200 /carton	NOW	eVT0320-x
eOP0064-eM-59	eFF8-200-2.4-eM-59	275mm	250 mm	2.40 mm	200 /carton	NOW	eVT0320-x
eOP0132-eM-59	eFF8-200-2.6-eM-59	276mm	250 mm	2.60 mm	200 /carton	NOW	eVT0320-x
eOP0494-eM-59	eFF8-200-2.6-R.3-eM-59	266mm	242 mm	2.60 mm	200 /carton	NOW	eVT0377-x
eOP0793-eM-59	eFF8-200-2.6-R.6-eM-59	276mm	250mm	2.60mm	200 /carton	NOW	eVT0320-x
eOP0137-eM-59	eFF12-300-3.5-eM-59	380mm	350 mm	3.5 mm	200 /carton	NOW	eVT0287-x

Material code info:

Material	Code	SR
PPS Glass Reinforced	eM-59-BLK	n/a
SAN	eM-89	n/a

[RETURN TO TABLE OF CONTENTS](#)



METAL FLEX FRAMES

- 410 SS / 420 SS
- 6 Inch and 8 Inch packed in carton quantities of 50
- 12 Inch packed in carton quantity of 25
- Other surface finishes available upon request
- Custom sizes and shapes available upon request



Metal Flex Frames – For shipping wafers mounted on tape

ePAK Order Code	ePAK Description	Flat to Flat	Internal Diameter	Internal Height	Std Pack Quantity
eOP0309	eMF-DTF-2-6-1	212 mm	194 mm	1.22 mm	50 /carton
eOP0310	eMF-350-103	215.9 mm	192.5 mm	1.22 mm	50 /carton
eOP0312	eMF-350-104	266.7 mm	242.32 mm	1.22 mm	50 /carton
eOP0311	eMF-DTF-2-8-1	276 mm	250 mm	1.22 mm	50 /carton
eOP0313	eMF-DTF-2-12	380 mm	350 mm	1.52 mm	25 /carton
eOP0574	eMF-450	556 mm	506 mm	2.0 mm	25/carton



[RETURN TO TABLE OF CONTENTS](#)

SINGLE FLEX FRAME SHIPPERS

- Designed for 100, 125, 150, 200 & 300mm wafers
- Available in uncoated, anti-static coated or conductive PS materials
- Call for further details.

Plastic Flex Frame Shippers: For shipping flex frames with mounted wafers

ePAK Order Code	ePAK Description	Std Pack Quantity	Frame dims Flat to Flat	Shipper Style	Frame Style
eVT0302-x	eFS6-150-R.1-x	50 /carton	212 mm	C	DISCO DTF 2-6-1
eVT0303-x	eFS6-150-R.2-x	50 /carton	195 mm	C	DISCO DTF 2-6
eVT0415-x	eFS6-150-R.3-x	50 /carton	216 mm	C	K&S 350-103
eVT1384-x	eFS6-150-R.5-x	50 /carton	216 mm	C	K&S 350-103
eVT1395-ASSY-#	eFS6-150-R.6-ASSY-#	50 /carton	212 mm	T	DISCO DTF 2-6-1
eVT1479-x	eFS6-150-R.9-x	50 /carton	195 mm	C	DISCO DTF 2-6
eVT2253-x	eFS6-150-R.12-x	50 /carton	212 mm	C	DISCO DTF 2-6-1
eVT0304-x	eFS8-200-R.1-x	25 /carton	Round Frame	C	Round Frame
eVT0320-x	eFS8-200-R.2-x	20 /carton	276 mm	C	DISCO DTF 2-8-1
eVT0377-x	eFS8-200-R.3-x	15 /carton	266 mm	C	K&S 350-104
eVT0380-x	eFS8-200-R.4-x	50 /carton	266 mm	C	K&S 350-104
eVT0972-x	eFS8-200-R.5-x	25 /carton	276 mm	C	DISCO DTF 2-8-1
eVT1650-ASSY-#	eFS8-200-R.8-ASSY-#	20 /carton	276 mm	T	DISCO DTF 2-8-1
eVT0287-x	eFS12-300-A-x	10 /carton	380 mm	C	SEMI G74 & G87
eVT0305-ASSY-#	eFS12-300-R.1-ASSY-#	10 /carton	380 mm	T	SEMI G74 & G87
eVT1607-X	eFS12-300-R.2-X	10 /carton	380 mm	C	SEMI G74 & G87
eVT1663-x	eFS12-300-R.3-x	10 /carton	380 mm	C	SEMI G74 & G87
eVT1723-x	eFS18-450-x	10 /carton	556 mm	T	



**Clamshell
("C" Style)**



**Stacked Trays
("T" Style)**

Material code options: (-x in P/N):

Material	Code	SR
Proprietary conductive PS	eM-20-BLK	10e4-10e11
Clear PS material	eM-21-CLR	N/A
Anti-Static coated PS	eM-23	10e9-10e11

[RETURN TO TABLE OF CONTENTS](#)



FLEX FRAME MULTI-SHIPPER

Plastic Flex Frame Multi-Shippers – For the vertical shipping of multiple Flex Frames with mounted wafers

Wafer Size	Frames Held	ePAK Order Code	ePAK Description	Flex Frame Height (Manuf.)
6 Inch	25 pcs	mWB0214-ASSY-1 (Conductive PP)	eFS6-150-25-R.1-ASSY-1	212 mm (DISCO outline)
	25 pcs	mWB0214-ASSY-3 (Natural PP)	eFS6-150-25-R.1-ASSY-3	212 mm (DISCO outline)
	25 pcs	mWB0214-ASSY-2 (Conductive PP)	eFS6-150-25-R.1-ASSY-2	216 mm (K&S outline)
	25 pcs	mWB0214-ASSY-4 (Natural PP)	eFS6-150-25-R.1-ASSY-4	216 mm (K&S outline)
8 Inch	25 pcs	eWB0152-ASSY-1 (Natural PP)	eFS8-200-25-R.1-ASSY-1	276 mm (DISCO outline)
	25 pcs	eWB0152-ASSY-3 (A/S impregnated Clear PP)	eFS8-200-25-R.1-ASSY-3	276 mm (DISCO outline)
	25 pcs	eWB0152-ASSY-2 (Natural PP)	eFS8-200-25-R.1-ASSY-2	266 mm (K&S outline)
	25 pcs	eWB0152-ASSY-4 (A/S impregnated Clear PP)	eFS8-200-25-R.1-ASSY-4	266 mm (K&S outline)
	25 pcs	eWB0152-ASSY-5 (Conductive PP)	eFS8-200-25-R.1-ASSY-5	276 mm (DISCO outline)
	25 pcs	eWB0152-ASSY-6 (Conductive PP)	eFS8-200-25-R.1-ASSY-6	266 mm (K&S outline)
	25 pcs	eWB0152-ASSY-7 (Cond. PP w/ eM-50 Spring)	eFS8-200-25-R.1-ASSY-7	276 mm (DISCO outline)
	25 pcs	eWB0152-ASSY-8 (Cond. PP w/ eM-50 Spring)	eFS8-200-25-R.1-ASSY-8	266 mm (K&S outline)
	25 pcs	eWB0591-ASSY-1 (Conductive PP)	eFS8-200-25-R.3-ASSY-1	276 mm (DISCO outline)
	25 pcs	eWB0591-ASSY-2 (Conductive PP)	eFS8-200-25-R.3-ASSY-2	276 mm (DISCO outline)
	25 pcs	eWB0591-ASSY-3 (Conductive PP)	eFS8-200-25-R.3-ASSY-3	266 mm (K&S outline)
	12 Inch	13 pcs	eWB0195-ASSY-1 (Natural PP w/ 1.5 Spring)	eFS12-300-13-ASSY-1
13 pcs		eWB0195-ASSY-2 (Natural PP w/ 3.5 Spring)	eFS12-300-13-ASSY-2	380 mm (SEMI G87) Plastic
13 pcs		eWB0195-ASSY-3 (Conductive PP w/ 1.5 Spring)	eFS12-300-13-ASSY-3	380 mm (SEMI G74) Metal
13 pcs		eWB0195-ASSY-4 (Conductive PP w/ 3.5 Spring)	eFS12-300-13-ASSY-4	380 mm (SEMI G87) Plastic



150mm



200mm



300mm

Material code options:

Material	Code	SR
Conductive PP	eM-01-BLK	10e4-10e5
Natural PP	eM-50-NAT	N/A

Protective shipping OverPAKS™ available...[see products](#)

[RETURN TO TABLE OF CONTENTS](#)



FLEX FRAME CANISTERS



Canister for 212mm & 216mm frames
(150mm)



Canisters for 266mm & 276mm frames
(200mm)



Canister for 380mm frames
(300mm)

Plastic Flex Frame Canisters – For horizontal/coinstack shipping of multiple Flex Frames with mounted wafers

Wafer Size	Internal Height	ePAK Order Code	ePAK Description	Flex Frame Dim (Flat to Flat) (Manuf.)
6" (150mm)	40mm	eWB0323-ASSY-1	eFSC6-150-40-ASSY-1	212mm (DISCO outline)
6" (150mm)	40mm	eWB0323-ASSY-2	eFSC6-150-40-ASSY-2	216mm (K&S outline)
8" (200mm)	81mm	eWB0394-ASSY-1	eFSC8-200-81-266-R.1-ASSY-1	266mm (K&S outline)
8" (200mm)	81mm	eWB0387-ASSY-1	eFSC8-200-81-276-R.1-ASSY-1	276mm (DISCO outline)
8" (200mm)*	48 mm	eWB0587-ASSY-1	FSC8-200-48-ASSY-1	276mm (DISCO outline)
12" (300mm)	109mm	eWB0448-ASSY-2	eFSC12-300-109-R.2-ASSY-2	380mm
12" (300mm)	67mm	eWB0590-ASSY-2	eFSC12-300-67-ASSY-1	380mm (coming 4Q 2022)

* "eLX" Style with reduced movement features.

Material code options:

Material	Code	SR
Conductive PP	eM-01-BLK	10e4-10e5

§ A range of cushion disks and separators are available. Please see next page.

§ Protective shipping OverPAKS™ available...[see products](#)

[RETURN TO TABLE OF CONTENTS](#)





FLEX FRAME CANISTER ACCESSORIES



Cushion Disks – ESD sensitive Cushioning material for use with Canisters and Jars

Wafer Size	FITS CANISTER PN:	ePAK Order Code	ePAK Description	Foam Dim (Flat to Flat)	Foam Thickness	Std Pack Quantity
6"	eWB0323 (ALL ASSY)	eFD0052-eM-04-H-PNK	eFD-225-6-eM-04-H-PNK	225mm	6 mm	50/pack
8"	eWB0394	eFD0083-eM-04-H-PNK	eFD8-265/265-3-eM-04-H-PNK	266mm	3 mm	100/pack
8"	eWB0394	eFD0084-eM-04-H-PNK	eFD8-265/265-6-eM-04-H-PNK	266mm	6 mm	50/pack
8"	eWB0387	eFD0058-eM-04-H-PNK	eFD8-275/275-3-eM-04-H-PNK	276mm	3 mm	100/pack
8"	eWB0387	eFD0059-eM-04-H-PNK	eFD8-275/275-6-eM-04-H-PNK	276mm	6 mm	50/pack
12"	eWB0448	eFD0081-eM-04-H-PNK	eFD12-378/378-R.1-3-eM-04-H-PNK	378mm	3 mm	50/pack
12"	eWB0448	eFD0080-eM-04-H-PNK	eFD12-378/378-R.1-6-eM-04-H-PNK	378mm	6 mm	50/pack

Material code options:

Material	Code	SR
Closed-cell polyethylene	eM-04-H-PNK	10e5-10e11

[RETURN TO TABLE OF CONTENTS](#)





FLEX FRAME CANISTER ACCESSORIES

Separators: For use between wafers on frames

Wafer Size	FITS CANISTER PN:	ePAK Order Code	ePAK Description	Interleaf Dim (Flat to Flat)	Separator Thickness	Std Pack Quantity
Anti-static spun PO (Tyvek®)						
6"	eWB0323	eIL0096-eM-03-A-WHT	eIL-225-0.16-eM-03-A-WHT	225 mm	0.16 mm	250/pack
8"	eWB0394	eIL0151-eM-03-A-WHT	eIL8-265/265-0.16-eM-03-A-WHT	265 mm	0.16 mm	250/pack
8"	eWB0387	eIL0102-eM-03-A-WHT	eIL8-275/275-0.16-eM-03-A-WHT	275 mm	0.16 mm	250/pack
12"	eWB0448	eIL0097-eM-03-A-WHT	eIL12-398-0.16-eM-03-A-WHT	378mm	0.16 mm	250/pack
Separators- ESD PS (Smooth eM-20-BLK)						
8"	eWB0394	eIL0149-eM-20-BLK	eIL8-265/265-0.13-eM-20-BLK	265 mm	0.13 mm	250/pack
8"	eWB0387	eIL0146-eM-20-BLK	eIL8-275/275-0.13-eM-20-BLK	276 mm	0.13 mm	250/pack
12"	eWB0448	eIL0147-eM-20-BLK	eIL12-378/378-0.16-eM-20-BLK	378mm	0.16 mm	250/pack
Separators- ESD PS (Embossed eM-20-BLK)						
6"	eWB0323	eIL0091-eM-20-BLK	eIL-225-0.07-eM-20-BLK	225 mm	0.07 mm	250/pack
8"	eWB0387	eIL0157-eM-20-BLK	eIL8-275/275-0.13-EMBOSSSED-eM-20-BLK	275 mm	0.13 mm	250/pack

Material code info:

Material	Code	SR
Anti-static spun PO (Tyvek®)	eM-03-A-WHT	10e6-10e11
Proprietary conductive PS	eM-20-BLK	10e4-10e11

Moisture Barrier Bags:

Wafer Size	FITS CANISTER PN:	ePAK Order Code	ePAK Description	Width (mm)	Length (mm)	Material Thickness	Std Pack Quantity
6"	eWB0323	eOP0078-19-eM-41	eBAG-330X380X0.08-eM-41	330	380	0.08 mm	500/carton
8"	eWB0394 & eWB0387	eOP0690-eM-41	eBAG-483X585X0.08-eM-41	483	585	0.08 mm	500/carton

Material code info:

Material	Code	SR
Metalized PET+PET+CPE	eM-41	10e6-10e11

[RETURN TO TABLE OF CONTENTS](#)





Hoop Rings: (X) is material code, (Y) is color code

ePAK Order Code	ePAK Description	Diameter	Ring Height	Locator Notch	Standard Color	Std Pack Quantity
eOP0062-x-y	eHR-122/134-6-IN-X-Y	ID=122 mm	6 mm	No	Grey	200 /carton
eOP0063-x-y	eHR-122/134-6-OUT-X-Y	OD=134 mm	6 mm	No	Blue	200 /carton
eOP0051-x-y	eHR-140/152-6-IN-X-Y	ID=140 mm	6 mm	No	Grey	200 /carton
eOP0050-x-y	eHR-140/152-6-OUT-X-Y	OD=152 mm	6 mm	No	Blue	200 /carton
eOP0790-x-y	eHR-140/152-6-IN-R.1-X-Y	ID=140 mm	6 mm	No	Grey	200 /carton
eOP0791-x-y	eHR-140/152-6-OUT-R.1-X-Y	OD=152 mm	6 mm	No	Blue	200 /carton
eOP0842-x-y	eHR-140/152-6-IN-R.2-X-Y	ID=140 mm	6 mm	No	Black	200 /carton
eOP0841-x-y	eHR-140/152-6-OUT-R.2-X-Y	OD=152 mm	6 mm	No	Black	200 /carton
For 6 Inch/150mm:						
eOP0049-x-y	eHR-170/186-6-IN-X-Y	ID=170 mm	6 mm	Yes	Grey	200 /carton
eOP0048-x-y	eHR-170/186-6-OUT-X-Y	OD=186 mm	6 mm	Yes	Blue	200 /carton
eOP0340-x-y	eHR-170/186-6-IN-R.2-X-Y	ID=170 mm	6 mm	Yes	Yellow	200 /carton
eOP0339-x-y	eHR-170/186-6-OUT-R.2-X-Y	OD=186 mm	6 mm	Yes	Red	200 /carton
eOP0066-x-y	eHR-195/210-6-IN-X-Y	ID=195 mm	6 mm	No	Black	200 /carton
eOP0065-x-y	eHR-195/210-6-OUT-X-Y	OD=210 mm	6 mm	No	Green	200 /carton
eOP0755-x-y	eHR-195/210-6-OUT-R.2-X-Y	OD=210 mm	6 mm	Yes	Green	200 /carton
eOP0236-x-y	eHR-195/210-6-IN-R.1-X-Y	ID=195 mm	6 mm	No	Green	200 /carton
eOP0235-x-y	eHR-195/210-6-OUT-R.1-X-Y	OD=210 mm	6 mm	No	Black	200 /carton
eOP1230-x-y	eHR-195/210-6-IN-R.3-X-Y(R)	ID=195 mm	6 mm	No	Green	200 /carton
eOP1229-x-y	eHR-195/210-6-OUT-R.3-X-Y(R)	OD=210 mm	6 mm	No	Black	200 /carton

NOTE: The word "UP" printed is ePAK Standard style. For printing the word "RADIUS" please add "-R" to end of the ePAK Order Code

Material code info: (-X in P/N):

Material	Code	SR
MPC	eM-16-Y	N/A

Color code info: (-Y in P/N)

Colors:	B = Blue
	G = Green
	GY = Grey
	Y = Yellow

[RETURN TO TABLE OF CONTENTS](#)



Hoop Rings: (X) is material code, (Y) is color code

ePAK Order Code	ePAK Description	Diameter	Ring Height	Locator Notch	Standard Color	Std Pack Quantity
For 8 Inch/200mm:						
eOP0183-x-y	eHR-225/241-6-IN-X-Y	ID=225 mm	6 mm	No	Yellow	200 /carton
eOP0182-x-y	eHR-225/241-6-OUT-X-Y	OD=241 mm	6 mm	No	Red	200 /carton
eOP0342-x-y	eHR-228/248-7-IN-X-Y	ID=227.7mm	7mm	No	Yellow	100/carton
eOP0341-x-y	eHR-228/248-7-OUT-X-Y	OD=248mm	7mm	No	Red	100/carton
eOP1247-x-y	eHR-240.5/257-6-IN-X-Y(R)	ID=240.5mm	6mm	No	Black	100/carton
eOP1246-x-y	eHR-240.5/257-6-OUT-X-Y(R)	OD=257mm	6mm	No	White	100/carton
For 12 Inch/300mm:						
eOP0327-x-y	eHR-330/347-6-IN-X-Y	ID=330 mm	6mm	No	Black	50 /carton
eOP0326-x-y	eHR-330/347-6-OUT-X-Y	OD=347 mm	6mm	No	Yellow	50 /carton

NOTE: The word "UP" printed is ePAK Standard style. For printing the word "RADIUS" please add "-R" to end of the ePAK Order Code

Material code info: (-X in P/N):

Material	Code	SR
MPC	eM-16-Y	N/A

Color code info: (-Y in P/N)

Colors:	B = Blue
	G = Green
	GY = Grey
	Y = Yellow



[RETURN TO TABLE OF CONTENTS](#)

Single Hoop Ring Shippers – Designed to hold single Hoop Ring assembly with wafer and tape

ePAK Order Code	ePAK Description	ID/OD of ring set(s) held	Std Pack Quantity	Materials Options
eVT0289-x	eV11-HRS-195/210.170/186-x	195/210 & 170/186	50 /carton	eM-20-BLK, eM-21-CLR, eM-23
eVT0336-x	eV11-HRS-140/152-x	140mm/152mm and 115mm/126.75mm	100 /carton	eM-20-BLK, eM-21-CLR, eM-23
eVT0680-x	eV11-HRS-140/152-R.1-x	140mm/152mm and 115mm/126.75mm	100 /carton	eM-20-BLK, eM-21-CLR, eM-23
eVT1726-x	eV8-HRS-140/152-R.2-x	140mm/152mm	100 /carton	eM-20-BLK, eM-21-CLR, eM-23
eVT0244-x	eV10-HRS-170/186-x	170mm/186mm	50 /carton	eM-20-BLK, eM-21-CLR, eM-23
eWB0217-195/210-x	eHS-195/210-x	195mm/210mm	20 /carton	eM-12, eM-22
eVT0939-x	eV12-HRS-225/241-x	225mm/241mm	30 /carton	eM-20-BLK, eM-21-CLR, eM-23
eVT2206-x	eV12-HRS-228/248-x	228mm/248mm	30 /carton	eM-20-BLK, eM-21-CLR, eM-23
eVT1465-x	eV20-HRS-330/347-x	330mm/347mm	20 /carton	eM-20-BLK, eM-21-CLR, eM-23

Note: eVT0336 fits loosely around rings, eVT0680 fits snug to outer hoop rings

Material code info: (-x in P/N):

Material	Code	SR
Proprietary conductive PS	eM-20-BLK	10e4-10e11
Clear PS material	eM-21-CLR	N/A
Anti-Static coated Clear PS	eM-23-CLR	10e8-10e11
Clear PC	eM-12-TRA	n/a
Conductive PC	eM-22-BLK	10e2-10e6

Hoop Ring Shippers – Designed to hold multiple Hoop Ring assemblies with wafer and tape

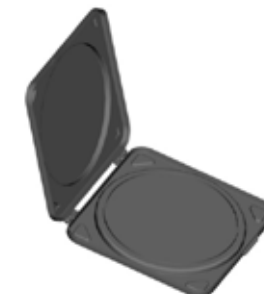
ePAK Order Code	ePAK Description	OD of ring set(s) held	Materials Options
eWB0256-x	eJR-210-65-X	210mm	eM-01-BLK, eM-08-NAT



eV11-HRS-195/210.170/186-x



eV10-HRS-170/186-x



eHS-195/210-x



eJR-210-65-x

[RETURN TO TABLE OF CONTENTS](#)

GLASS SUBSTRATE SHIPPERS

Round Glass:

Substrate Size	ePAK Order Code	ePAK Description	Max Substrates per Shipper
170x1.5	eWB0162-x	eGBX-170x1.5-X	1
160x1.65	eWB0163-x	eGBX-160X1.65-20-X	20
180x1.65	eWB0165-x	eGBX-180X1.65-20-X	20



Material Code info for adapter plates ONLY:(-x in P/N):

Material	Code	SR
PS	eP-28	n/a
ABS	eM-73	n/a

Rectangular Glass:

Substrate Size	ePAK Order Code	Cassette Description	Max Substrates per Cassette
180x230	eWB0178-x	ePB-180X230-25-X	25

Substrate Size	ePAK Order Code	Box Description	Compatible with Cassette:
180x230	eWB0179-ASSY-#	ePBX-180X230-ASSY-#	ePB-180X230-25-X

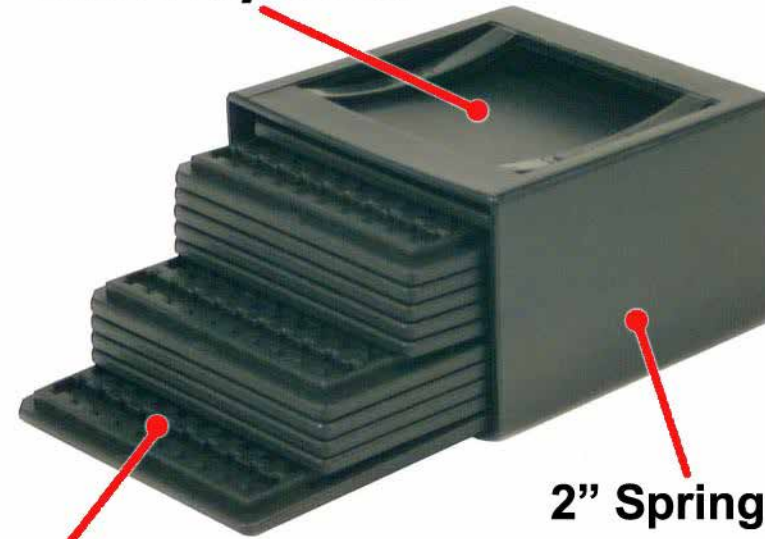
Material Code info: (-x in P/N):

Material	Code	SR
Conductive PP	eM-01-BLK	10e4-10e5
Natural PP (Multi Shipper only)	eM-50-NAT	N/A
**Polyvinylidene Difluoride (PVDF)	eM-56-NAT	n/a

** PVDF Material option is for Cassette only.



2" Dice Tray Cover



2" Spring Box

2" Dice Tray

- Flexible packing system
- Fast tooling cycle time
- Standardized outline and full set of accessories including caps, clips and cover tray
- Convenient carrier for sample die, finished IC or other small components
- Contact ePAK today to discuss your custom chip tray solution





CHIP TRAY SYSTEM

Chip Tray Open Tooling: 2" X 2" TRAYS



Tray size	Chip Size	Thick	Matrix	Order Code	Chip Tray Description	Material Options (-x)	Std Pack Quantity
2" x 2"	0.84X1.3	0.3	16X22	eDT0036-X	eD2-0.84X1.3X0.3-1622-X	eM-22-BLK	2000 /carton
2" x 2"	0.89X0.89	0.38	20X20	eDT0178-X	eD2 0.89X0.89X0.38 2020 X	eM-22-BLK	2000 /carton
2" x 2"	0.89X0.89	0.38	20X20	eDT0199-X	eD2 0.89X0.89X0.38 2020 R.1 X	eM-22-BLK	2000 /carton
2" x 2"	0.9X1.05	0.35	16X16	eDT0209-X	eD2 0.90X1.05X0.35 1616 X	eM-22-BLK	2000 /carton
2" x 2"	0.98X1.15	0.35	16X16	eDT0214-X	eD2 0.98X1.15X0.35 1616 X	eM-22-BLK	2000 /carton
2" x 2"	1.02X1.02	0.61	20X20	eDT0202-X	eD2 1.02X1.02X0.61 2020 X	eM-22-BLK	2000 /carton
2" x 2"	1.07x1.55	0.33	20x16	eDT0238-X	eD2 1.07X1.55X0.33 2016 X	eM-22-BLK	2000 /carton
2" x 2"	1.07X1.55	0.51	10X10	eDT0198-X	eD2 1.07X1.55X0.51 1010 X	eM-22-BLK	2000 /carton
2" x 2"	1.10X1.30	0.60	16X16	eDT0203-X	eD2 1.10X1.30X0.60 1616 X	eM-22-BLK	2000 /carton
2" x 2"	1.1X1.3	0.35	10X10	eDT0218-X	eD2 1.10X1.30X0.35 1010 X	eM-22-BLK	2000 /carton
2" x 2"	1.10X1.47	0.8	14X16	eDT0067-X	eD2-1.10X1.47X0.80-1416-X	eM-22-BLK	2000 /carton
2" x 2"	1.21X1.15	0.85	16X16	eDT0161-X	eD2 1.21X1.15X0.85 1616 X	eM-22-BLK	2000 /carton
2" x 2"	1.21X1.15	0.65	16X16	eDT0168-X	eD2 1.21X1.15X0.65 1616 X	eM-22-BLK	2000 /carton
2" x 2"	1.22x2.10	0.62	10x10	eDT0226-X	eD2 1.22X2.10X0.62 1010 X	eM-153-BLK	2000 /carton
2" x 2"	1.23X0.83	0.7	15X16	eDT0187-X	eD2 1.23X0.83X0.70 1516 X	eM-22-BLK	2000 /carton
2" x 2"	1.27X1.25	0.35	20X20	eDT0213-X	eD2 1.27X1.25X0.35 2020 X	eM-22-BLK	2000 /carton
2" x 2"	1.27X1.55	0.35	10X10	eDT0212-X	eD2 1.27X1.55X0.35 1010 X	eM-22-BLK	2000 /carton
2" x 2"	1.38x1.88	0.33	11x10	eDT0234-X	eD2 1.38X1.88X0.33 1110 X	eM-153-BLK	2000 /carton
2" x 2"	1.40X0.89	0.51	24X19	eDT0064-X	eD2-1.40X0.89X0.51-2419-X	eM-22-BLK	2000 /carton
2" x 2"	1.43X1.0	0.8	15X18	eDT0103-X	eD2-1.43X1.0X0.8-1518-X	eM-22-BLK	2000 /carton
2" x 2"	1.4X1.4	0.34	12x12	eDT0224-X	eD2 1.40X1.40X0.34 1212 X	eM-153-BLK	2000 /carton
2" x 2"	1.4X1.4	0.61	20X20	eDT0179-X	eD2 1.40X1.40X0.61 2020 X	eM-22-BLK	2000 /carton

Material code options: (-x in P/N):

Material	Code	SR	Material	Code	SR
Conductive PP	eM-01-BLK	10e4-10e5	ABS	eM-24	n/a
Conductive PP	eM-09-BLK	<10e6	Conductive PP	eM-37-BLK	10e4-10e6
Conductive PS	eP-16-BLK	10e4-10e7	Conductive PC	eM-153-BLK	10e5-10e9
Conductive PC	eM-22-BLK	10e4-10e5			

[RETURN TO TABLE OF CONTENTS](#)





CHIP TRAY SYSTEM (CONTINUED)

2" X 2" TRAYS (continued)



Tray size	Chip Size	Thick	Matrix	Order Code	Chip Tray Description	Material Options (-x)	Std Pack Quantity
2" x 2"	1.50x1.00	0.62	10x10	eDT0232-X	eD2 1.50X1.00X0.62 1010 X	eM-22-BLK	2000 /carton
2" x 2"	1.52X1.52	0.3	20X20	eDT0157-X	eD2 1.52X1.52X0.30 2020 X	eM-22-BLK	2000 /carton
2" x 2"	1.55X1.0	0.35	10X10	eDT0216-X	eD2 1.55X1.00X0.35 1010 X	eM-22-BLK	2000 /carton
2" x 2"	1.55X2.60	1.1	13X10	eDT0086-X	eD2-1.55X2.60X1.10-1310-X	eM-22-BLK	2000 /carton
2" x 2"	1.58X0.98	1.05	10X10	eDT0180-X	eD2 1.58X0.98X1.05 1010 X	eM-22-BLK	2000 /carton
2" x 2"	1.65X1.65	0.61	10X10	eDT0061-X	eD2-1.65X1.65X0.61-1010-X	eM-22-BLK	2000 /carton
2" x 2"	1.7X1.1	0.35	10X10	eDT0220-X	eD2 1.70X1.10X0.35 1010 X	eM-22-BLK	2000 /carton
2" x 2"	1.73X2.13	0.75	11X10	eDT0169-X	eD2 1.73X2.13X0.75 1110 X	eM-22-BLK	2000 /carton
2" x 2"	1.8X1.9	0.35	10X10	eDT0217-X	eD2 1.80X1.90X0.35 1010 X	eM-22-BLK	2000 /carton
2" x 2"	1.83X2.29	0.46	12X16	eDT0063-X	eD2-1.83X2.29X0.46-1216-X	eM-22-BLK	2000 /carton
2" x 2"	1.84X1.35	0.74	15X20	eDT0208-X	eD2 1.84X1.35X0.74 1520 X	eM-22-BLK	2000 /carton
2" x 2"	1.91X1.91	0.61	18X18	eDT0204-X	eD2 1.91X1.91X0.61 1818 X	eM-22-BLK	2000 /carton
2" x 2"	2.03X2.03	0.61	13X13	eDT0207-X	eD2 2.03X2.03X0.61 1313 X	eM-22-BLK	2000 /carton
2" x 2"	2.25X2.47	1.12	10X11	eDT0072-X	eD2-2.25X2.47X1.12-1011-X	eM-22-BLK	2000 /carton
2" x 2"	2.29X2.29	0.61	10X10	eDT0051-X	eD2-2.29X2.29X0.61-1010-X	eM-22-BLK	2000 /carton
2" x 2"	2.29X2.29	0.61	10X10	eDT0182-X	eD2 2.29x2.29x0.61 1010 R.1 X	eM-22-BLK	2000 /carton
2" x 2"	2.30X1.90	0.8	11X12	eDT0101-X	eD2-2.30X1.90X0.80-1112-X	eM-22-BLK, eM-24	2000 /carton
2" x 2"	2.30X3.80	1.1	8X10	eDT0093-X	eD2-2.30X3.80X1.10-0810-X	eM-22-BLK	2000 /carton
2" x 2"	2.34X2.83	1.1	11X10	eDT0073-X	eD2-2.34X2.83X1.10-1110-X	eM-22-BLK	2000 /carton
2" x 2"	2.36X3.75	1.1	8X11	eDT0085-X	eD2-2.36X3.75X1.10-0811-X	eM-22-BLK	2000 /carton
2" x 2"	2.74X1.37	1.1	9X14	eDT0047-X	eD2-2.74X1.37X1.10-0914-X	eM-22-BLK	2000 /carton
2" x 2"	2.74X3.18	1.1	9X9	eDT0044-X	eD2-2.74X3.18X1.1-0909-X	eM-22-BLK	2000 /carton

Material code options: (-x in P/N):

Material	Code	SR	Material	Code	SR
Conductive PP	eM-01-BLK	10e4-10e5	ABS	eM-24	n/a
Conductive PP	eM-09-BLK	<10e6	Conductive PP	eM-37-BLK	10e4-10e6
Conductive PS	eP-16-BLK	10e4-10e7	Conductive PC	eM-153-BLK	10e5-10e9
Conductive PC	eM-22-BLK	10e4-10e5			

[RETURN TO TABLE OF CONTENTS](#)



2" X 2" TRAYS (continued)



Tray size	Chip Size	Thick	Matrix	Order Code	Chip Tray Description	Material Options (-x)	Std Pack Quantity
2" x 2"	2.79X1.98	0.51	11X14	eDT0185-X	eD2 2.79X1.98X0.51 1114 X	eM-22-BLK	2000 /carton
2" x 2"	2.8X2.8	0.9	10X10	eDT0015-X	eD2-2.8-2.8X0.9-1010-X	eM-22-BLK	2000 /carton
2" x 2"	2.80X3.40	0.8	10X9	eDT0094-X	eD2-2.80X3.40X0.80-1009-X	eM-22-BLK, eM-24	2000 /carton
2" x 2"	2.8X4.07	1.1	9X8	eDT0046-X	eD2-2.8X4.07X1.1-0908-X	eM-22-BLK	2000 /carton
2" x 2"	2.92X1.82	0.9	10X13	eDT0129-X	eD2 2.92X1.82X0.90 1013 X	eM-22-BLK	2000 /carton
2" x 2"	2.96X1.35	0.9	9X14	eDT0117-X	eD2 2.96X1.35X0.90 0914 X	eM-22-BLK	2000 /carton
2" x 2"	3.05X8.55	0.49	10X4	eDT0125-X	eD2 3.05X8.55X0.49 1004 X	eM-22-BLK	2000 /carton
2" x 2"	3.14X3.69	0.75	8X7	eDT0170-X	eD2 3.14X3.69X0.75 0807 X	eM-22-BLK	2000 /carton
2" x 2"	3.2X3.2	1.1	10X10	eDT0126-X	eD2 3.2X3.2X1.1 1010 X	eM-22-BLK	2000 /carton
2" x 2"	3.28X3.08	1.1	9X9	eDT0045-X	eD2-3.28X3.08X1.1-0909-X	eM-22-BLK	2000 /carton
2" x 2"	3.3X3.3	0.9	10X10	eDT0016-X	eD2-3.3X3.3X0.9-1010-X	eM-01-BLK	2000 /carton
2" x 2"	3.48X2.38	0.8	7X9	eDT0173-X	eD2 3.48X2.38X0.80 0709 X	eM-22-BLK	2000 /carton
2" x 2"	3.7X1.65	0.35	8X14	eDT0211-X	eD2 3.70X1.65X0.35 0814 X	eM-22-BLK	2000 /carton
2" x 2"	3.71X4.07	0.7	7x7	eDT0221-X	eD2 3.71X4.07X0.70 0707 X	eM-153-BLK	2000 /carton
2" x 2"	3.76X1.8	0.25	9X15	eDT0206-X	eD2 3.76X1.80X0.25 0915 X	eM-22-BLK	2000 /carton
2" x 2"	3.8X2.2	0.7	10X10	eDT0017-X	eD2-3.8X2.2X0.7-1010-X	eM-01-BLK	2000 /carton
2" x 2"	3.89X1.85	0.79	17X9	eDT0030-X	eD2-3.89X1.85X0.79-1709	eP16,eM-22-BLK	2000 /carton
2" x 2"	4.08x6.52	0.58	7x5	eDT0231-X	eD2 4.08X6.52X0.58 0705 X	eM-153-BLK	2000 /carton
2" x 2"	4.1x5.63	0.58	7x5	eDT0229-X	eD2 4.10X5.63X0.58 0705 X	eM-153-BLK	2000 /carton
2" x 2"	4.11X2.90	0.8	7X9	eDT0172-X	eD2 4.11X2.90X0.80 0709 X	eM-22-BLK	2000 /carton
2" x 2"	4.3X2.3	0.35	7X10	eDT0219-X	eD2 4.30X2.30X0.35 0710 X	eM-22-BLK	2000 /carton
2" x 2"	4.46X2.55	0.66	8X14	eDT0177-X	eD2 4.46X2.55X0.66 0814 X	eM-22-BLK	2000 /carton

Material code options: (-x in P/N):

Material	Code	SR	Material	Code	SR
Conductive PP	eM-01-BLK	10e4-10e5	ABS	eM-24	n/a
Conductive PP	eM-09-BLK	<10e6	Conductive PP	eM-37-BLK	10e4-10e6
Conductive PS	eP-16-BLK	10e4-10e7	Conductive PC	eM-153-BLK	10e5-10e9
Conductive PC	eM-22-BLK	10e4-10e5			

[RETURN TO TABLE OF CONTENTS](#)



CHIP TRAY SYSTEM (CONTINUED)

2" X 2" TRAYS (continued)



Tray size	Chip Size	Thick	Matrix	Order Code	Chip Tray Description	Material Options (-x)	Std Pack Quantity
2" x 2"	4.46X2.55	0.66	8X14	eDT0200-X	eD2 4.46X2.55X0.66 0814 R.1 X	eM-22-BLK	2000 /carton
2" x 2"	4.50x3.10	0.75	6x7	eDT0225-X	eD2 4.50X3.10X0.75 0607 X	eM-22-BLK	2000 /carton
2" x 2"	4.52X4.12	0.58	7x7	eDT0223-X	eD2 4.52X4.12X0.58 0707 X	eM-153-BLK	2000 /carton
2" x 2"	4.53X4.53	0.75	6X6	eDT0186-X	eD2 4.53X4.53X0.75 0606 X	eM-22-BLK	2000 /carton
2" x 2"	4.59X5.91	0.85	7X5	eDT0048-X	eD2 4.59X5.91X0.85 0705 X	eM-22-BLK	2000 /carton
2" x 2"	4.74X2.35	1.1	7X10	eDT0082-X	eD2 4.74X2.35X1.10 0710 X	eM-22-BLK	2000 /carton
2" x 2"	5.08X13.46	0.76	3X7	eDT0062-X	eD2 5.08X13.46X0.76 0307 X	eM-22-BLK	2000 /carton
2" x 2"	5.15X1.15	1.8	10X6	eDT0007-X	eD2-5.115X1.15X1.8-1006-X	eM-09-BLK	2000 /carton
2" x 2"	5.15X11.5	1.8	5x3	eDT0113-X	eD2 5.15X11.50X1.80 0503 X	eM-22-BLK	2000 /carton
2" x 2"	5.30X5.30	0.9	6X6	eDT0049-X	eD2 5.30X5.30X0.9 0606 X	eM-22-BLK	2000 /carton
2" x 2"	5.75X2.36	1.1	5X11	eDT0081-X	eD2 5.75X2.36X1.10 0511 X	eM-22-BLK	2000 /carton
2" x 2"	6.35X6.35	0.61	6X6	eDT0060-X	eD2 6.35X6.35X0.61 0606 X	eM-22-BLK	2000 /carton
2" x 2"	6.80X2.30	1.1	5X10	eDT0098-X	eD2 6.80X2.30X1.10 0510 X	eM-22-BLK	2000 /carton
2" x 2"	6.87X2.92	0.48	5X9	eDT0188-X	eD2 6.87X2.92X0.48 0509 X	eM-22-BLK	2000 /carton
2" x 2"	8.55X2.95	0.49	4X10	eDT0119-X	eD2 8.55X2.95X0.49 0410 X	eM-22-BLK	2000 /carton
2" x 2"	9.8X2.8	0.55	11X4	eDT0022-X	eD2-9.8X2.8X0.55-1104-X	eM-24	2000 /carton
2" x 2"	12.8X2.39	0.9	14X3	eDT0002-X	eD2-12.8X2.39X0.9-1403-X	eM-01-BLK	2000 /carton
2" x 2"	13X11	0.8	2X3	eDT0010-X	eD2-13X11X0.8-203-X	eM-01-BLK, eM-09	2000 /carton
2" x 2"	40X40	1.76	1X1	eDT0043-X	eD2-40X40X1.1-X	eM-22-BLK	2000 /carton

Material code options: (-x in P/N):

Material	Code	SR	Material	Code	SR
Conductive PP	eM-01-BLK	10e4-10e5	ABS	eM-24	n/a
Conductive PP	eM-09-BLK	<10e6	Conductive PP	eM-37-BLK	10e4-10e6
Conductive PS	eP-16-BLK	10e4-10e7	Conductive PC	eM-153-BLK	10e5-10e9
Conductive PC	eM-22-BLK	10e4-10e5			

[RETURN TO TABLE OF CONTENTS](#)



3" X 3" TRAYS

Tray size	Chip Size	Thick	Matrix	Order Code	Chip Tray Description	Material Options (-x)	Std Pack Quantity
3" x 3"	8.41X1.91	0.03	20X6	eDT0069-X	eD3-8.41X1.91X0.30-2006-X	eM-22-BLK	2000 /carton

4" X 4" TRAYS

Tray size	Chip Size	Thick	Matrix	Order Code	Chip Tray Description	Material Options (-x)	Std Pack Quantity
4" x 4"	1.25X1.15	0.3	20X20	eDT0028-X	eD4-1.25X1.15X0.3-2020-X	eM-22-BLK	2000 /carton
4" x 4"	2.55X2.55	1.85	20X20	eDT0121-X	eD4 2.55X2.55X1.85 2020-X	eM-22-BLK	2000 /carton
4" x 4"	2.70X2.20	1.00	21X24	eDT0123-X	eD4 2.70X2.20X1.00 2124 X	eM-22-BLK	2000 /carton
4" x 4"	3.41X3.16	1.21	10X10	eDT0079-X	eD4 3.41X3.16X1.21 1010 X	eM-22-BLK	2000 /carton
4" x 4"	4.21X4.21	0.75	15X15	eDT0144-X	eD4 4.21X4.21X0.75 1515 X	eM-22-BLK	2000 /carton
4" x 4"	4.95x2.08	0.50	12x24	eDT0253-X	eD4 4.95X2.08X0.50 1224 X	eM-22-BLK	2000 /carton
4" x 4"	6.5X6.5	0.7	11X11	eDT0122-X	eD4 6.5X6.5X0.7 1111 X	eM-22-BLK	2000 /carton
4" x 4"	6.66X4.16	1.55	15X5	eDT0095-X	eD4 6.66X4.16X1.55 1505-X	eM-22-BLK	2000 /carton
4" x 4"	8.15X5.65	1.62	13X05	eDT0124-X	eD4 8.15X5.65X1.62 1305-X	eM-22-BLK	2000 /carton
4" x 4"	13X13	2	6X6	eDT0083-X	eD4 13X13X2.0 0606-X	eM-22-BLK	2000 /carton

Material code options: (-x in P/N):

Material	Code	SR	Material	Code	SR
Conductive PP	eM-01-BLK	10e4-10e5	ABS	eM-24	n/a
Conductive PP	eM-09-BLK	<10e6	Conductive PP	eM-37-BLK	10e4-10e6
Conductive PS	eP-16-BLK	10e4-10e7			
Conductive PC	eM-22-BLK	10e4-10e5			

[RETURN TO TABLE OF CONTENTS](#)





CHIP TRAY SYSTEM (CONTINUED)



1 Piece Clip



2 Piece Clip



Spring Box

Material code options: (-x in P/N):

Material	Code	SR
Conductive PP	eM-01-BLK	10e4-10e5
ABS	eM-24	N/A
CFPP	eM-46-BLK	10e4-10e10
Anti-static spun PO(Tyvek®)	eM-03-A-WHT	10e6-10e11

Chip Tray Covers:

Tray Size & Function	Thick	Matrix	Order Code	Chip Tray Description	Std Pack Quantity
2" Cover	n/a	n/a	eDT0001-eM-01-BLK	eD2-COVER(1)-eM-01-BLK	2000 / carton
2" Cover	n/a	n/a	eDT0026-eM-37	eD2-COVER(1)-eM-37	2000 / carton
2" Cover	n/a	n/a	eDT0027-eM-22-BLK	eD2-COVER(1)-eM-22-BLK	2000 / carton
2" Cover	n/a	n/a	eDT0025-eM-01-BLK	eD2-COVER(3)-eM-01-BLK	2000 / carton
3" Cover	n/a	n/a	eDT0070-x	eD3-Cover-X	2000 / carton
4" Cover	n/a	n/a	eDT0080-x	eD4-Cover(3)-X	2000 / carton

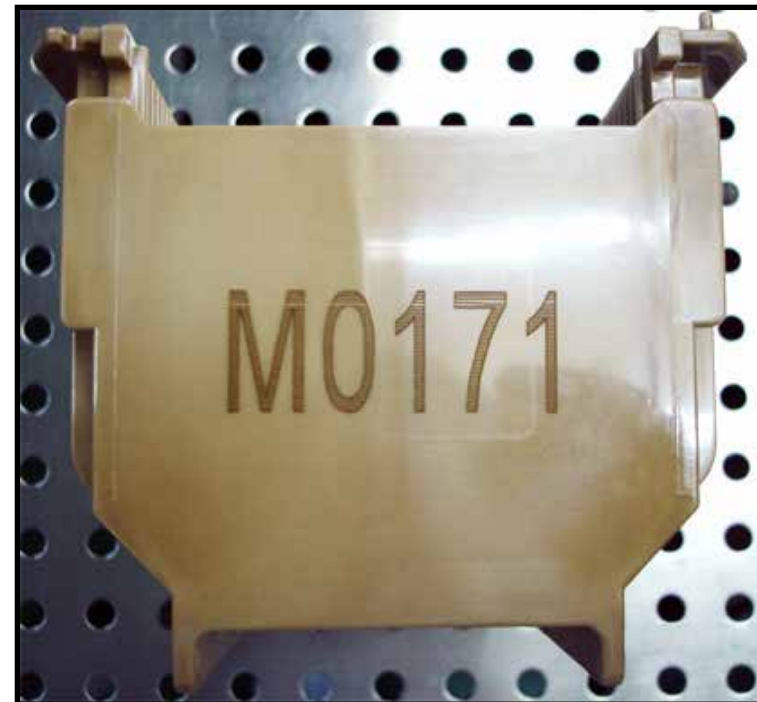
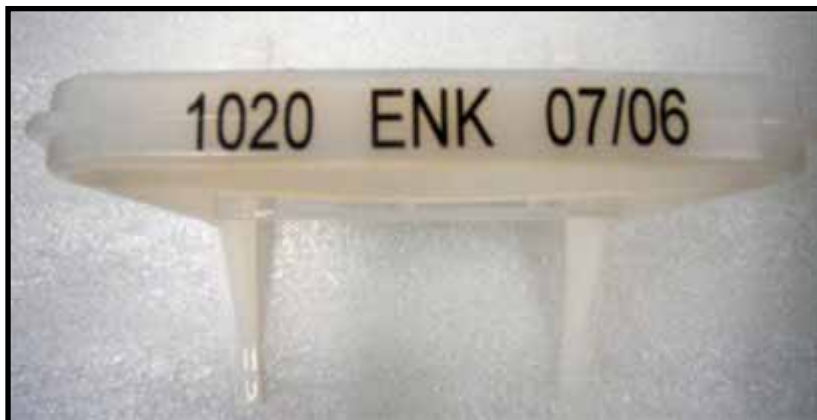
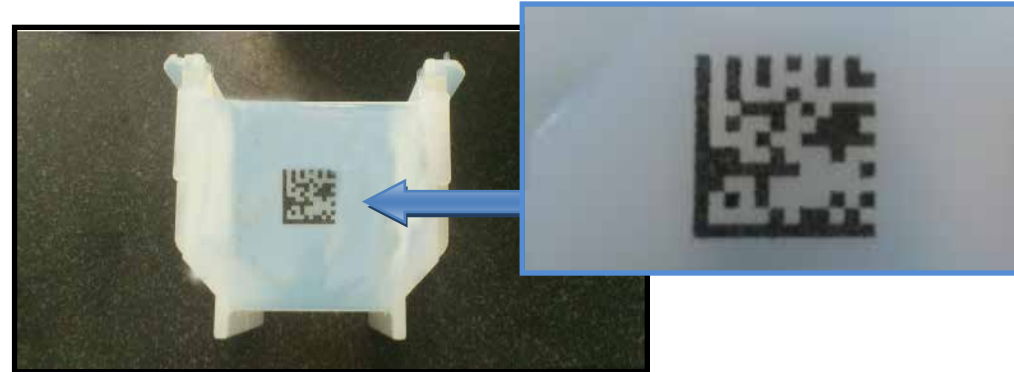
Chip Tray Accessories:

Tray Size & Function	STYLE	Capacity	Order Code	Description	Std Pack Quantity
CLIPS:					
2" Clip	1 Piece Clip	2	eEC0013-eM-01-BLK	eD2-CLIP2-R.1-eM-01-BLK	2500 / carton
2" Clip	1 Piece Clip	2	eEC0026-eM-24	eD2-CLIP2-R.1-eM-24	2500 / carton
2" Clip	1 Piece Clip	2	eEC0013-eM-46-BLK	eD2-CLIP2-R.1-eM-46-BLK	2500 / carton
2" Clip	2 Piece Clip	2	eEC0011-eM-01-BLK	eD2-CLIP2-eM-01-BLK	2000 / carton
2" Clip	2 Piece Clip	6	eEC0010-eM-01-BLK	eD2-CLIP6-eM-01-BLK	2000 / carton
2" Clip	2 Piece Clip	11	eEC0009-eM-01-BLK	eD2-CLIP11-eM-01-BLK	2000 / carton
3" Clip	2 Piece Clip	6	eEC0021-eM-01-BLK	eD3-CLIP6-eM-01-BLK	2000 / carton
4" Clip	1 Piece Clip	2	eEC0024-eM-01-BLK	eD4-CLIP2-eM-01-BLK	2500 / carton
4" Clip	2 Piece Clip	6	eEC0023-eM-01-BLK	eD4-CLIP6-eM-01-BLK	2000 / carton
2" Spring Box	Spring Box	6	eEC0033-eM-01-BLK	eD2-EC06-R.1-eM-01-BLK	2000 / carton
2" Spring Box	Spring Box	11	eEC0012-eM-01-BLK	eD2-EC11-eM-01-BLK	2000 / carton
INTERLEAF:					
2" Interleaf	Interleaf	n/a	eIL0012-eM-03-A-WHT	eIL2-44.5x44.5-0.16-eM-03-A-WHT	10K /carton
2" Interleaf	Interleaf	n/a	eIL0020-eM-03-A-WHT	eIL2-45.72x45.72-0.16-eM-03-A-WHT	10K /carton
4" Interleaf	Interleaf	n/a	eIL0088-eM-03-A-WHT	eIL4-90.8x90.8-0.16-eM-03-A-WHT	10K /carton
4" Interleaf	Interleaf	n/a	eIL0103-eM-20-BLK	eIL4-90.8x90.8-0.07-eM-20-BLK	10K /carton

[RETURN TO TABLE OF CONTENTS](#)

Custom Laser Markings now available on most ePAK Wafer Products.

- | Serialized Alpha Numeric Codes
- | Part numbers
- | Serial numbers
- | QR codes



[RETURN TO TABLE OF CONTENTS](#)

RETICLE BOX



- Front snap lock mechanism for easy box closure
- Integrated hinge set for easy operator opening

Reticle Box:

ePAK Order Code	ePAK Description	Std Pack Quantity
eWB0005-eM-12	ePM-126-3-eM-12	20 /carton
eWB0034-eM-34	ePM-126-2-eM-34	20 /carton

Material code info: (-x in P/N):

Material	Code	SR
Clear PC	eM-12-TRA	n/a
ESD PP	eM-34-BLK	10e6-10e10



[RETURN TO TABLE OF CONTENTS](#)

Vacuum formed, cushioning material for protection during shipping (fits inside a carton).

For Wafer Canisters:

Wafer Canister Size	ePAK Order Code	ePAK Overpak Description	Material offered	# of Canisters protected per set	Std Pack Quantity
6" eLX style R.1 (small body)	eVT0734-x	eV15-6-4-x	eM-21-CLR	4 pcs	10/Box
6" eLX style R.1 (small body)	eVT02441-x	eV15-eWB0086-4-R.1-x	eM-26-CLR	4 pcs	10/Box
6" Tall eLX style (eWB0435)	mVT2351-x	eV20-eWB0435-4-x	eM-26-NAT	4 pcs	10/Box
6" & 8" eLX style	eVT0334-x	eV15-6/8-4-x	eM-31/eM-21-CLR	4 pcs	10/Box
8" Standard Canister (eWB0075)	eVT1639-x	eV15-TI8/200-4-x	eM-26-NAT	4 pcs	10/Box
8" Tall eLX style (eWB0383)	eVT1787-x	eV18-eWB0383-2-x	eM-26-NAT	2 pcs	10/Box
8" Tall eLX styles (eWB0383) & (eWB0516)	eVT1785-x	eV18-eWB0383-4-x	eM-26-NAT	4 pcs	10/Box
eCT-152-26-x	eVT0700-x	eV12-eCT-152-4-x	eM-21-CLR	4 pcs	20/Box
***12" eLX style	eVT0285-x	eV15-12-1-x	eM-21-CLR	1 pcs	2/Box
12" Tall eLX style (eWB0371)	eVT1843-x	eV18-eCT-LX12/300-71-R.2-x	eM-26-NAT	1 pcs	2/Box
12" Tall eLX style (eWB0371)	eVT1973-x	eV18-eCT-LX12/300-71-R.3-x	eM-26-NAT	2 pcs	20/Box
450mm	eVT1553-x	eV18-eCT-450-0.7-x	eM-26-NAT	1 pcs	2/Box



For Wafer Jars:

Wafer Jar Size	ePAK Order Code	ePAK Overpak Description	Material offered	# of Jars protected per set	Std Pack Quantity
4"x0.9"	eVT0418-x	eV12-4x0.9-6-x	eM-20-BLK/eM-21-CLR	6 pcs	50/Box
4"x1.2"	eVT0419-x	eV12-4x1.2-6-x	eM-20-BLK/eM-21-CLR	6 pcs	20/box
4"x2.4"	eVT0554-x	eV12-4x2.4-1-x	eM-20-BLK/eM-21-CLR	1 pcs	20/box
4"x2.4"	eVT0433-x	eV12-4x2.4-4-x	eM-20-BLK/eM-21-CLR	4 pcs	20/box
5"x1.5"	eVT0807-x	eV12-5x1.5-4-x	eM-21-CLR	4 pcs	50/box
6"x0.8"	eVT1389-x	eV12-6x0.8-5-x	eM-20-BLK/eM-21-CLR	5 pcs	100/box
6"x1.5"	eVT0265-x	eV12-6x1.5-2-x	eM-21-CLR	2 pcs	50/box
6"x1.5"	eVT0266-x	eV12-6x1.5-4-x	eM-21-CLR	4 pcs	20/box
8"x2"	eVT0300-x	eV12-8x2-4-x	eM-21-CLR	4 pcs	20/box



Material code options: (-x in P/N):

Material	Code	SR
Proprietary conductive PS	eM-20-BLK	10e4-10e11
Clear PS	eM-21-CLR	n/a
PP	eM-26-NAT	n/a
HIPS	eM-31-BLK or -WHT	n/a

[RETURN TO TABLE OF CONTENTS](#)



For Wafer Shipping Boxes:

Designed For Product	ePAK Order Code	ePAK Overpak Description	Material offered	Protected per set	Std Pack Quantity
eMS-2/50-25-x	eVT0487-x	eV12-2/50-25-x	eM-20-BLK/eM-21-CLR	8 pcs	50/Box
100mm (4") ePRO I	eVT0571-x	eV18-4/100-OVERPAK-1-x	eM-20/eM-21/eM-26/eM-31	6 pcs	20/Box
100mm (4") ePRO II/III	eVT1612-eM-26-NAT	eV18-4 ePRO II and ePRO III-6-eM-26-NAT	eM-26-NAT	6 pcs	20/Box
125mm (5") ePRO II	eVT1092-eM-26-NAT	eV18-ePROII-5/125-OVERPAK-6-eM-26-NAT	eM-26-NAT	6 pcs	20/Box
150mm (6") ePRO I	eVT0575-x	eV18-6/150-OVERPAK-1-x	eM-20/eM-21/eM-26/eM-31	4 pcs	20/Box
150mm (6") ePRO II/III	eVT1653-eM-26-NAT	eV18-6" ePROII and ePROIII-2-eM-26-NAT	eM-26-NAT	2 pcs	25/Box
150mm (6") ePRO II/III	eVT1413-eM-26-NAT	eV18-6" ePROII and ePROIII-4-eM-26-NAT	eM-26-NAT	4 pcs	25/Box
150mm (6") ePRO II	eVT1348-eM-26-NAT	eV18-ePROII-6/150-OVERPAK-6-eM-26-NAT	eM-26-NAT	6 pcs	20/Box
200mm (8") ePRO I only	eVT0616-x	eV18-8/200-OVERPAK-1-x	ALL	2 pcs	20/Box
200mm (8") ePRO I only	eVT0691-x	eV18-8/200-OVERPAK-R.1-x	eM-20/eM-21/eM-26/eM-31	2 pcs	20/Box
200mm (8") ePRO II/III	eVT1535-x	eV18-8" ePROII and ePROIII-2-X	eM-26-NAT	2 pcs	20/Box
200mm ULTRAPAK* & ePRO III	eVT0703-x	eV15-ULTRAPAKS-x	eM-25-CLR/eM-26-NAT	2 pcs	50/Box
200mm ULTRAPAK* & ePRO III	eVT2273-x	eV18-8" ePRO II and ePRO III-1-X	eM-26-NAT	1 pcs	20/Box

*Ultrapak® is a registered trademark of EMPAK, Inc.

Material code options: (-x in P/N):

Material	Code	SR
Proprietary conductive PS	eM-20-BLK	10e4-10e11
Clear PS	eM-21-CLR	n/a
Clear A/S coated APET	eM-25-CLR	10e7-10e11
PP	eM-26-NAT	n/a
HIPS	eM-31-BLK or -WHT	n/a



[RETURN TO TABLE OF CONTENTS](#)





For FOSB:

Wafer size	ePAK Order Code	ePAK Overpak Description	Material offered	Shippers protected per set	Std Pack Quantity
300mm	eVT0654-x	eV18-12-FOSB-COVER-x	eM21-CLR/eM-26-NAT	1 Pcs	25/Box
	eVT0655-x	eV18-12-FOSB-BASE-x	eM21-CLR/eM-26-NAT	1 Pcs	25/Box
300mm	eVT1588-x	eV18-12-FOSB-BASE-R.1-x	eM21-CLR/eM-26-NAT	1 Pcs	25/Box
300mm	eVT1822-x	eV18-MW-971-R.2-X	eM21-CLR/eM-26-NAT	1 Pcs	25/Box
	eVT1823-x	eV18-MW-972-R.2-X	eM21-CLR/eM-26-NAT	1 Pcs	25/Box

For Flex Frame Shipping Box:

Designed For Product	ePAK Order Code	ePAK Overpak Description	Material offered	Canisters protected per set	Std Pack Quantity
150mm (6") Flex Frame Shipper	eVT1295-x	eV18-eFS6-150-25-R.1-OVERPAK-1-x	eM-20-BLK/eM-21-CLR eM-26-NAT/eM-31	1 Pcs	20/Box
150mm (6") Flex Frame Shipper	eVT1662-x	eV18-eFS6-150-25-R.1-OVERPAK-R.2-x	eM-26-NAT	1 Pcs	20/Box
200mm (8") Flex Frame Shipper	eVT1664-x	eV18-eFS8-200-25-R.1-OVERPAK-x	eM-26-NAT	1 Pcs	20/Box
200mm(8") Flex Frame shipper	eVT2397-x	eV18-eWB0152-2-X	eM-26-NAT	2 pcs	20/box
200mm (8") Flex Frame Shipper	eVT2386-x	eV18-eWB0591-1-X	eM-26-NAT	1 Pcs	20/Box

For Flex Frame Canisters:

Designed For Product	ePAK Order Code	ePAK Overpak Description	Material offered	Canisters protected per set	Std Pack Quantity
150mm(6")Flex Frame Canister(eWB0323)	eVT1981-x	eV15-eFSC6-150-40-R.1-Overpak-X	eM-26-NAT	1 Pcs	20/Box
200mm (8") Flex Frame Canister	eVT1697-x	eV15-10.8-1-x	eM-26-NAT	1 Pcs	20/Box
200mm(8")Flex Frame Canister(eWB0587)	eVT2387-x	eV15-eWB0587-1-X	eM-26-NAT	1 Pcs	20/Box
300mm (12") Flex Frame Shipper	eVT1661-x	eV18-eFS12-300-13-OVERPAK-x	eM-26-NAT	1 Pcs	20/Box
300mm (12") Flex Frame canister	eVT1935-x	eV18-12"FFC-OVERPACK-x	eM-26-NAT	1 Pcs	20/Box

Material code options: (-x in P/N):

Material	Code	SR
Proprietary conductive PS	eM-20-BLK	10e4-10e11
Clear PS	eM-21-CLR	n/a
PP	eM-26-NAT	n/a
HIPS	eM-31-BLK or -WHT	n/a

[RETURN TO TABLE OF CONTENTS](#)



Plastic Clean Room Bags – (Clear LDPE bags- open on one side)

Order Code	Bag Description	For ePAK Products:	Std Pack Quantity
eM-35 (LDPE) Material:			
eOP0095-1-eM-35	eBAG-140x280x0.06-eM-35		500pcs / carton
eOP0095-2-eM-35	eBAG-200x360x0.10-eM-35		500pcs / carton
eOP0095-3-eM-35	eBAG-200x360x0.15-eM-35		500pcs / carton
eOP0095-4-eM-35	eBAG-205x330x0.06-eM-35		500pcs / carton
eOP0095-5-eM-35	eBAG-230x270x0.06-eM-35	eJR-170-38-X, eCT-152-26-x, eCT6-150-0.7-x, eJR6-150-20-Base-X	500pcs / carton
eOP0095-6-eM-35	eBAG-230x360x0.06-eM-35		500pcs / carton
eOP0095-7-eM-35	eBAG-230x420x0.06-eM-35	eCT5-125-X	500pcs / carton
eOP0095-8-eM-35	eBAG-255x155x0.06-eM-35		500pcs / carton
eOP0095-9-eM-35	eBAG-280x310x0.06-eM-35	eCT8-200-0.7-X, eCT6-150-X, eJR-167-76-X, eJR-167-76-X	500pcs / carton
eOP0095-10-eM-35	eBAG-280x580x0.08-eM-35	eMS-3/76-25-x	500pcs / carton
eOP0095-11-eM-35	eBAG-280x650x0.08-eM-35	eMS-4/100-10-x	500pcs / carton
eOP0095-12-eM-35	eBAG-280x650x0.06-eM-35		500pcs / carton
eOP0095-13-eM-35	eBAG-300x360x0.06-eM-35	eJR-235-51-X, eJR8-200-23-Base-X	500pcs / carton
eOP0095-14-eM-35	eBAG-310x780x0.08-eM-35	eMS-4/100-25-x	500pcs / carton
eOP0095-15-eM-35	eBAG-330x360x0.06-eM-35	eCT-LX8/200-4-44-X, eCT-LX6/150-4-44-X	500pcs / carton
eOP0095-16-eM-35	eBAG-360x550x0.10-eM-35	For 8" clam shell	500pcs / carton
eOP0095-17-eM-35	eBAG-360x650x0.06-eM-35		500pcs / carton
eOP0095-18-eM-35	eBAG-368x863x0.08-eM-35		500pcs / carton
eOP0095-19-eM-35	eBAG-370x400x0.06-eM-35	eMS-2/50-25-x, eMS-3/76-25-x, ePB-2/50-25-x, ePB-3/76-25-x	500pcs / carton
eOP0095-20-eM-35	eBAG-406x508x0.06-eM-35		500pcs / carton
eOP0095-21-eM-35	eBAG-406x508x0.08-eM-35		500pcs / carton
eOP0095-22-eM-35	eBAG-410x460x0.06-eM-35		500pcs / carton
eOP0095-23-eM-35	eBAG-410x510x0.06-eM-35	eCT2-50-x, eCT-LX12/300-4-44-x.	500pcs / carton
eOP0095-24-eM-35	eBAG-445x876x0.06-eM-35		500pcs / carton
eOP0095-25-eM-35	eBAG-450x510x0.06-eM-35		500pcs / carton
eOP0095-26-eM-35	eBAG-495x533x0.06-eM-35		500pcs / carton
eOP0095-27-eM-35	eBAG-495x615x0.06-eM-35	For 8" ePRO inside bag	500pcs / carton
eOP0095-28-eM-35	eBAG-635x502x0.08-eM-35		500pcs / carton

*Please confirm Description and Order Code information with your ePAK Representatives

Material code info:

Material	Code	SR
Plastic Clean Room Bag (LDPE)	eM-35	n/a

Bag Part Number Description:



[RETURN TO TABLE OF CONTENTS](#)

Plastic Clean Room Bags – (Clear HDPE bags- open on one side)

Order Code	Bag Description	For ePAK Products:	Std Pack Quantity
eM-52 (HDPE) Material:			
eOP0129-1-eM-52	eBAG-230x500x0.08-eM-52	For 2" cassette	500pcs / carton
eOP0129-2-eM-52	eBAG-280x580x0.08-eM-52	For 2.5"/3" cassette	500pcs / carton
eOP0129-3-eM-52	eBAG-305x356x0.08-eM-52	ePRO-4/100-25-x	500pcs / carton
eOP0129-4-eM-52	eBAG-320x406x0.08-eM-52	ePRO-5/125-25-x	500pcs / carton
eOP0129-5-eM-52	eBAG-380x430x0.08-eM-52	ePRO-6/150-25-x	500pcs / carton
eOP0129-6-eM-52	eBAG-485x585x0.08-eM-52	ePRO-8/200-25-x	500pcs / carton
eOP0129-7-eM-52	eBAG-381x483x0.08-eM-52	6" Coinstyle Single Shippers	500pcs / carton
eOP0129-8-eM-52	eBAG-600x620x0.08-eM-52	450mm Single Shipper	100pcs / carton

**Please confirm Description and Order Code information with your ePAK Representatives*

Material code info:

Material	Code	SR
Plastic Clean Room Bag (HDPE)	eM-52	n/a

Bag Part Number Description:



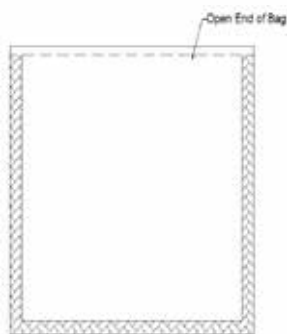
[RETURN TO TABLE OF CONTENTS](#)



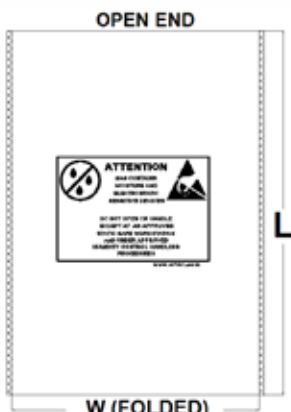
PACKING BAGS

-FOR VACUUM PACKING APPLICATIONS-

ESD/Moisture Barrier Bag - (Metalized PET+PET+CPE material)



eOP0116-eM-41



eOP0078-eM-41

eM-41 Material:			
Order Code	Bag Description	For ePAK Products:	Std Pack Quantity
eOP0116-eM-41	eBAG-141x138x0.08-eM-41		500pcs / carton
eOP0116-2-eM-41	eBAG-171x168x0.08-eM-41		500pcs / carton
eOP0106-eM-41	eBAG-159x159x0.08-eM-41		500pcs / carton
eOP0078-1-eM-41	eBAG-160x200x0.08-eM-41	eJR4-100-20-x, eJR4-100-30-x	500pcs / carton
eOP0078-2-eM-41	eBAG-160X220X0.08-eM-41	eWB0040 and eWB0044	500pcs / carton
eOP0078-3-eM-41	eBAG-166x192x0.08-eM-41	eJR4-100-23-x, eJR4-100-32-x	500pcs / carton
eOP0078-4-eM-41	eBAG-180x230x0.08-eM-41	eJR4-100-49-x	500pcs / carton
eOP0078-5-eM-41	eBAG-195x230x0.08-eM-41	eJR4-100-49-X, eJR4-100-60.5-X	500pcs / carton
eOP0078-6-eM-41	eBAG-200x260x0.08-eM-41		500pcs / carton
eOP0078-7-eM-41	eBAG-200X300X0.08-eM-41		500pcs / carton
eOP0078-8-eM-41	eBAG-230x280x0.08-eM-41	eJR6-170-38-x	500pcs / carton
eOP0078-9-eM-41	eBAG-260X310X0.08-eM-41	eWB0086	500pcs / carton
eOP0078-10-eM-41	eBAG-280x330x0.08-eM-41	eCT-152-26-x	500pcs / carton
eOP0078-11-eM-41	eBAG-280X580X0.08-eM-41	eWB0029	500pcs / carton
eOP0078-12-eM-41	eBAG-280X650X0.08-eM-41	eWB0258	500pcs / carton
eOP0078-13-eM-41	eBAG-305x356x0.08-eM-41	ePRO-4/100-25-x	500pcs / carton
eOP0078-14-eM-41	eBAG-305x406x0.08-eM-41		500pcs / carton
eOP0078-15-eM-41	eBAG-310-360x0.08-eM-41	eCT-202-30-x, eJR-235-51-x	500pcs / carton
eOP0078-16-eM-41	eBAG-310X780X0.08-eM-41	For eWB0259	500pcs / carton
eOP0078-17-eM-41	eBAG-320x360x0.08-eM-41		500pcs / carton
eOP0078-18-eM-41	eBAG-320x406x0.08-eM-41	ePRO-5/125-25-x	500pcs / carton
eOP0078-19-eM-41	eBAG-330x380x0.08-eM-41	eCT-LX6/150-4-44-x, eCT-LX8/200-4-44-x, eWB0323	500pcs / carton
eOP0078-20-eM-41	eBAG-365X550X0.10-eM-41	8" clamshell	500pcs / carton
eOP0078-21-eM-41	eBAG-380x430x0.08-eM-41		500pcs / carton
eOP0078-22-eM-41	eBAG-390x460x0.08-eM-41	ePRO-6/150-25-x	500pcs / carton
eOP0078-23-eM-41	eBAG-420x500x0.08-eM-41	eCT-LX12/300-4-44-x,	500pcs / carton
eOP0078-24-eM-41	eBAG-460x520x0.08-eM-41		500pcs / carton
eOP0078-26-eM-41	eBAG-500X600X0.08-eM-41		500pcs / carton
eOP0078-27-eM-41	eBAG-508x635x0.08-eM-41		500pcs / carton
eOP0078-28-eM-41	eBAG-546x610x0.08-eM-41		500pcs / carton
eOP0078-29-eM-41	eBAG-813x813x0.08-eM-41		500pcs / carton
eOP0078-26-eM-41	eBAG-500X600X0.08-eM-41		500pcs / carton
eOP0078-26-eM-41	eBAG-500X600X0.08-eM-41		500pcs / carton

*Please confirm Description and Order Code information with your ePAK Representatives

Material code info:

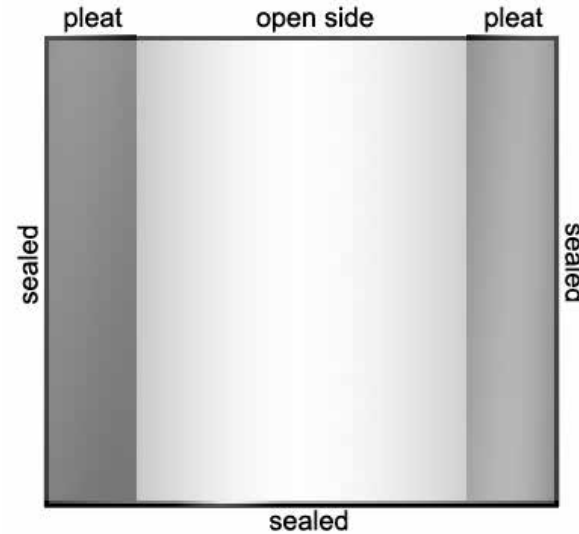
Material	Code	SR
ESD/Moisture Barrier Bag (Metalized PET+PET+CPE)	eM-41	10e6 -10e11

[RETURN TO TABLE OF CONTENTS](#)



PLEATED PACKING BAGS

-FOR VACUUM PACKING APPLICATIONS-



Pleated Bags: Pleated on 2 sides

Order Code	Bag Description	Std Pack Quantity	For ePAK Products:
eOP0113-eM-35	eBAG-155x255x0.06-eM-35	500pcs/ carton	
eOP0113-eM-35	eBAG-152.4x228.6x0.06-eM-35	500pcs/ carton	
eOP0113-eM-52	eBAG-960x830x0.08-eM-52	500pcs/ carton	For FOSB

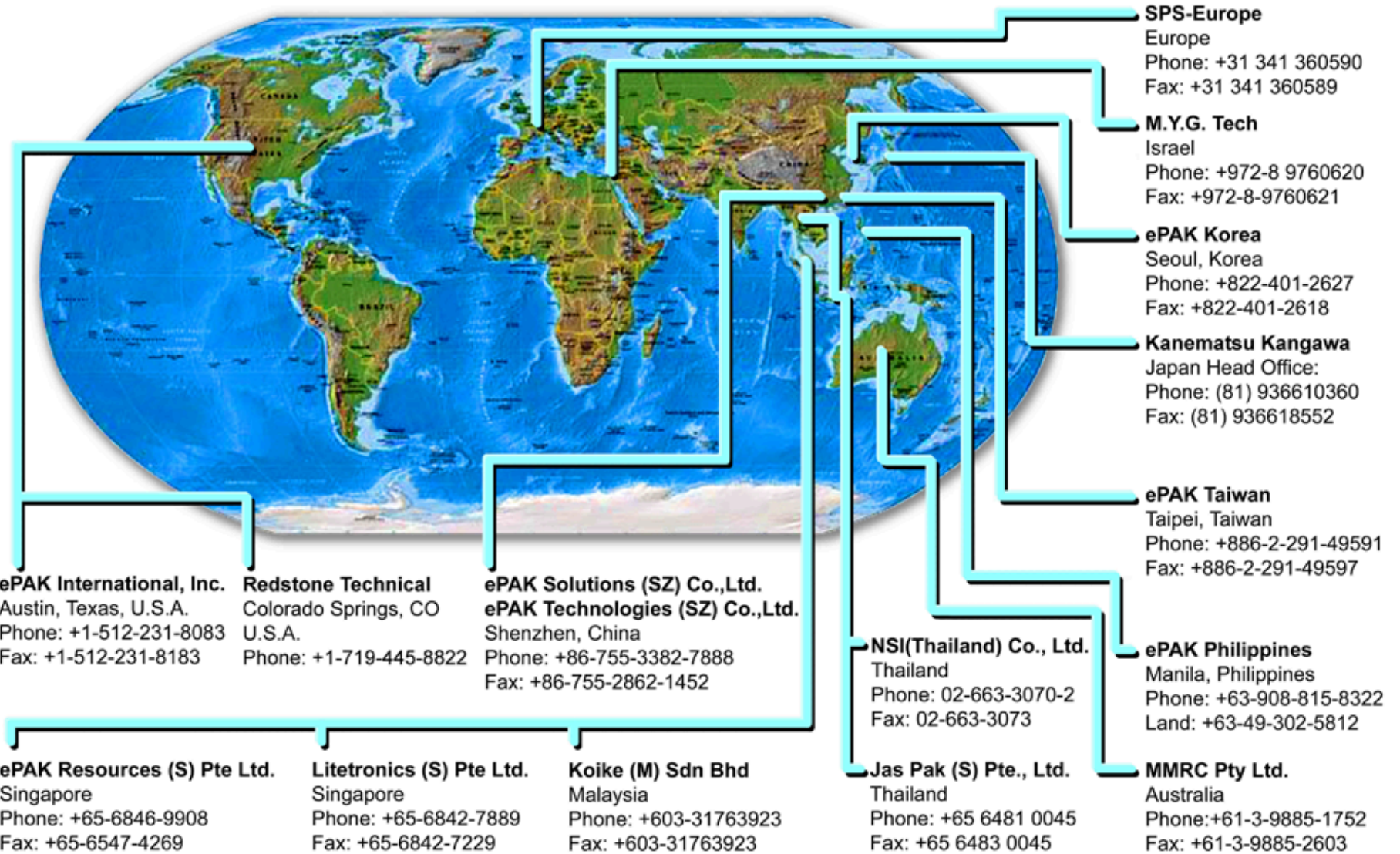
**Please confirm Description and Order Code information with your ePAK Representatives*

Material code options: (-x in P/N):

Material	Code	SR
Plastic Clean Room Bag (LDPE)	eM-35	n/a
Plastic Clean Room Bag (HDPE)	eM-52	n/a

[RETURN TO TABLE OF CONTENTS](#)

WORLDWIDE LOCATIONS



[RETURN TO TABLE OF CONTENTS](#)